

Configuring a Cisco 6400 UAC Multipoint Interface Configured With PPPoE to Support a Remote Cisco 827 Router

Document ID: 12890

Introduction

Before You Begin

- Conventions

- Prerequisites

- Components Used

Configure

- Network Diagram

- Configurations

Verify

Troubleshoot

[NetPro Discussion Forums – Featured Conversations](#)

Related Information

Introduction

This sample configuration shows you how to support a Point-to-Point Protocol over Ethernet (PPPoE) client when it is connected to the Ethernet interface of a Cisco 827 Digital Subscriber Line (DSL) Router.

The Cisco 827 is configured with RFC1483 bridging and terminates on a Cisco 6400 Universal Access Concentrator (UAC) that has been configured to support PPPoE using a multipoint ATM subinterface.

The PPPoE feature allows you to initiate a PPP session on a simple bridging Ethernet connected client. The session is transported over the asynchronous transfer mode (ATM) link via encapsulated Ethernet-bridged frames. The session can be terminated at either a local exchange carrier central office or an Internet service provider (ISP) point of presence.

PPPoE is a client-initiated connection. On the customer premises equipment (CPE) side, a PC with an Ethernet network interface card (NIC) and the PPPoE client code are established. This PC and other PCs are connected to the 827 Ethernet segment.

The 827 ATM interface is connected to a Cisco 6130 Digital Subscriber Line Access Multiplexer (DSLAM) and terminates on a Cisco 6400 UAC.

Before You Begin

Conventions

For more information on document conventions, see the [Cisco Technical Tips Conventions](#).

Prerequisites

There are no specific prerequisites for this document.

Components Used

The information in this document is based on the software and hardware versions below.

- Cisco 827-4V CPE IOS® Software Release 12.1(1)XB
- Cisco 6400 UAC-NRP IOS Software Release 12.0(7)DC
- Cisco 6400 UAC-NSP IOS Software Release 12.0(4)DB
- Cisco 6130 DSLAM-NI2 IOS Software Release 12.1(1)DA

The information presented in this document was created from devices in a specific lab environment. All of the devices used in this document started with a cleared (default) configuration. If you are working in a live network, ensure that you understand the potential impact of any command before using it.

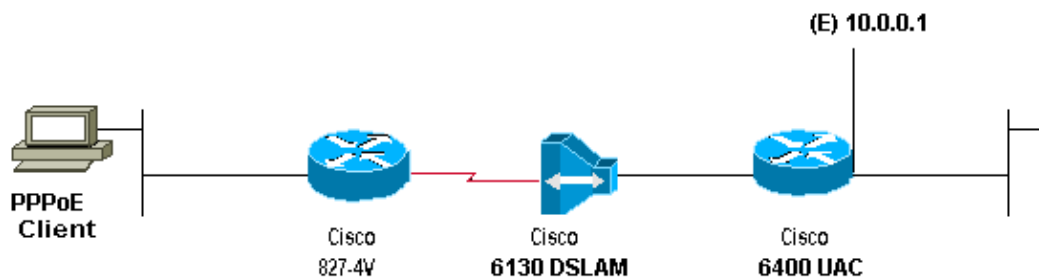
Configure

In this section, you are presented with the information to configure the features described in this document.

Note: To find additional information on the commands used in this document, use the Command Lookup Tool (registered customers only) .

Network Diagram

This document uses the network setup shown in the diagram below.



Configurations

This document uses the configurations shown below.

Note: In the Cisco 6400 NRP configuration, you set the size of the maximum transmission unit (MTU). For information about changing the MTU, see Troubleshooting MTU Size in PPPoE Dialin Connectivity.

- Cisco 827
- Cisco 6400 NRP

Cisco 827
Current configuration: ! version 12.0 no service pad service timestamps debug datetime msec service timestamps log datetime msec no service password-encryption

```

!
hostname R1
!
ip subnet-zero
no ip routing
!
interface Ethernet0
no ip address
no ip directed-broadcast
bridge-group 1
!
interface ATM0
no ip address
no ip directed-broadcast
no ip mroute-cache
no atm ilmi-keepalive
pvc 3/100
encapsulation aal5snap
!
bundle-enable
bridge-group 1
hold-queue 224 in
!
ip classless
no ip http server
!
bridge 1 protocol ieee
!
voice-port 1
timing hookflash-in 0
!
voice-port 2
timing hookflash-in 0
!
voice-port 3
timing hookflash-in 0
!
voice-port 4
timing hookflash-in 0
!
!
line con 0
end

```

Cisco 6400 NRP

```

Current configuration:
!
version 12.0
service timestamps debug uptime
service timestamps log uptime
no service password-encryption
!
hostname NRPl
!
username username password password

!--- Username and password must match
!--- client username and password.

!
redundancy
main-cpu
auto-sync standard
no secondary console enable

```

```
ip subnet-zero
ip cef
!
vpdn enable
!
vpdn-group 1
accept-dialin
protocol pppoe
virtual-template 1
pppoe limit per-mac 101
pppoe limit per-vc 102
!
interface ATM0/0/0
no ip address
no ip directed-broadcast
no ip mroute-cache
no atm ilmi-keepalive
!
interface ATM0/0/0.1 multipoint
no ip directed-broadcast
pvc 3/100
encapsulation aal5snap
protocol pppoe
!
interface Ethernet0/0/1
ip address 10.0.0.1 255.0.0.0
no ip directed-broadcast
!
interface Ethernet0/0/0
no ip address
no ip directed-broadcast
shutdown
!
interface FastEthernet0/0/0
no ip address
no ip directed-broadcast
half-duplex
!
interface Virtual-Template1

!--- Do not use a static IP assignment within a
!--- virtual template; routing problems can occur.

ip mtu 1492
ip unnumbered Ethernet0/0/1

!--- Always use the ip unnumbered command when
!--- configuring a virtual template.

no ip directed-broadcast
ip mroute-cache
peer default ip address pool pool name
ppp authentication chap
!
ip local pool pool name 10.0.0.2 10.0.0.12
ip classless
no ip http server
!
line con 0
!
end
```

Verify

There is currently no verification procedure available for this configuration.

Troubleshoot

There is currently no specific troubleshooting information available for this configuration.

NetPro Discussion Forums – Featured Conversations

Networking Professionals Connection is a forum for networking professionals to share questions, suggestions, and information about networking solutions, products, and technologies. The featured links are some of the most recent conversations available in this technology.

NetPro Discussion Forums – Featured Conversations for DSL
Network Infrastructure: Remote Access
Service Providers: VPN Service Architectures

Related Information

- [Cisco 6400 Software Setup Guide](#)
- [Cisco 6400 Feature Guide](#)
- [Cisco 6400 Command Reference](#)
- [PPPoE on ATM](#)
- [DSL Technical Support](#)
- [Cisco Product Support](#)
- [Technical Support – Cisco Systems](#)

[Contacts & Feedback](#) | [Help](#) | [Site Map](#)

© 2008 – 2009 Cisco Systems, Inc. All rights reserved. [Terms & Conditions](#) | [Privacy Statement](#) | [Cookie Policy](#) | [Trademarks of Cisco Systems, Inc.](#)

Updated: Nov 23, 2007

Document ID: 12890
