

Configuring a Cisco 827 Router With RFC1483 Routing Using AAL5SNAP Protocol IP

Document ID: 12895

Introduction

Before You Begin

Conventions

Prerequisites

Components Used

Configure

Network Diagram

Configurations

Verify

Troubleshoot

NetPro Discussion Forums – Featured Conversations

Related Information

Introduction

This sample configuration shows a Cisco 827 Digital Subscriber Line (DSL) Router that has been configured with AAL5SNAP and routes IP to a Cisco 6400 Universal Access Concentrator (UAC).

Before You Begin

Conventions

For more information on document conventions, see the Cisco Technical Tips Conventions.

Prerequisites

There are no specific prerequisites for this document.

Components Used

The information in this document is based on the software and hardware versions below.

- Cisco 827-4V Customer Premises Equipment (CPE) IOS® Software Release 12.1(1)XB
- Cisco 6400 UAC-NRP IOS Software Release 12.0(7)DC
- Cisco 6400 UAC-NSP IOS Software Release 12.0(4)DB
- Cisco 6130 DSLAM-NI2 IOS Software Release 12.1(1)DA

The information presented in this document was created from devices in a specific lab environment. All of the devices used in this document started with a cleared (default) configuration. If you are working in a live network, ensure that you understand the potential impact of any command before using it.

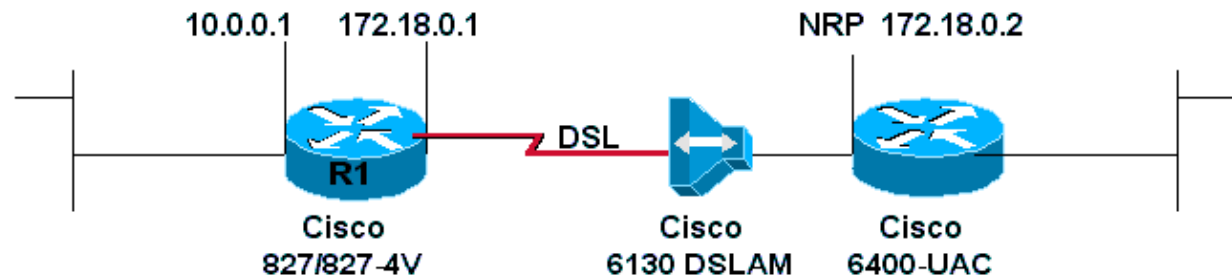
Configure

In this section, you are presented with the information to configure the features described in this document.

Note: To find additional information on the commands used in this document, use the Command Lookup Tool (registered customers only) .

Network Diagram

This document uses the network setup shown in the diagram below.



Configurations

This document uses the configurations shown below.

- Cisco 827
- Cisco 6400–NRP

Cisco 827
<pre>Current configuration: ! version 12.1 no service pad service timestamps debug datetime msec service timestamps log datetime msec ! hostname R1 ! ip subnet-zero ! interface Ethernet0 ip address 10.0.0.1 255.0.0.0 no ip directed-broadcast no ip mroute-cache ! interface ATM0 ip address 172.18.0.1 255.255.0.0 no ip directed-broadcast no ip mroute-cache no atm ilmi-keepalive pvc 4/100 protocol ip 172.18.0.2 encapsulation aal5snap ! bundle-enable hold-queue 224 in ! ip classless ip route 0.0.0.0 0.0.0.0 172.18.0.2 no ip http server ! !</pre>

```
voice-port 1
  timing hookflash-in 0
!
voice-port 2
  timing hookflash-in 0
!
voice-port 3
  timing hookflash-in 0
!
voice-port 4
  timing hookflash-in 0
!
end
```

Cisco 6400-NRP

```
Current configuration:
!
version 12.0
no service pad
service timestamps debug datetime msec
service timestamps log datetime msec
hostname NRP
!
redundancy
  main-cpu
    no auto-sync standard
    no secondary console enable
ip subnet-zero
interface ATM0/0/0
  no ip address
  no ip directed-broadcast
  no ip mroute-cache
  no ATM ilmi-keepalive
!
interface ATM0/0/0.4 point-to-point
  ip address 172.18.0.2 255.255.0.0
  no ip directed-broadcast
  no ip mroute-cache
  PVC 4/100
    protocol ip 172.18.0.1
    encapsulation aal5snap
!
interface Ethernet0/0/1
  no ip address
  no ip directed-broadcast
!
interface Ethernet0/0/0
  no ip directed-broadcast
!
interface FastEthernet0/0/0
  no ip address
  no ip directed-broadcast
  full-duplex
!
ip classless
ip route 10.0.0.1 255.255.255.255 172.18.0.1
!
end
```

Verify

There is currently no verification procedure available for this configuration.

Troubleshoot

There is currently no specific troubleshooting information available for this configuration.

NetPro Discussion Forums – Featured Conversations

Networking Professionals Connection is a forum for networking professionals to share questions, suggestions, and information about networking solutions, products, and technologies. The featured links are some of the most recent conversations available in this technology.

NetPro Discussion Forums – Featured Conversations for DSL
Network Infrastructure: Remote Access
Service Providers: VPN Service Architectures

Related Information

- [Configuring the Cisco 827 Router](#)
- [Cisco 6400 Software Setup Guide](#)
- [DSL Support Page](#)
- [Cisco Product Support](#)
- [Technical Support – Cisco Systems](#)

[Contacts & Feedback](#) | [Help](#) | [Site Map](#)

© 2008 – 2009 Cisco Systems, Inc. All rights reserved. [Terms & Conditions](#) | [Privacy Statement](#) | [Cookie Policy](#) | [Trademarks of Cisco Systems, Inc.](#)

Updated: Nov 23, 2007

Document ID: 12895
