

Cisco CallManager 4.0-PBX Interoperability: Avaya Definity G3r to a Cisco 3745 Gateway with MFT T1/E1 Digital Voice Network Module with VIC2 Analog Interfaces

Introduction

This application note contains the test results of PBX interoperability testing from a PBX via analog interfaces under test to a Cisco voice router via IP communications high-density digital voice/fax network module (NM-HDV2) with 2-port voice interface card (VIC2) Analog interfaces installed in Cisco Voice Gateways.

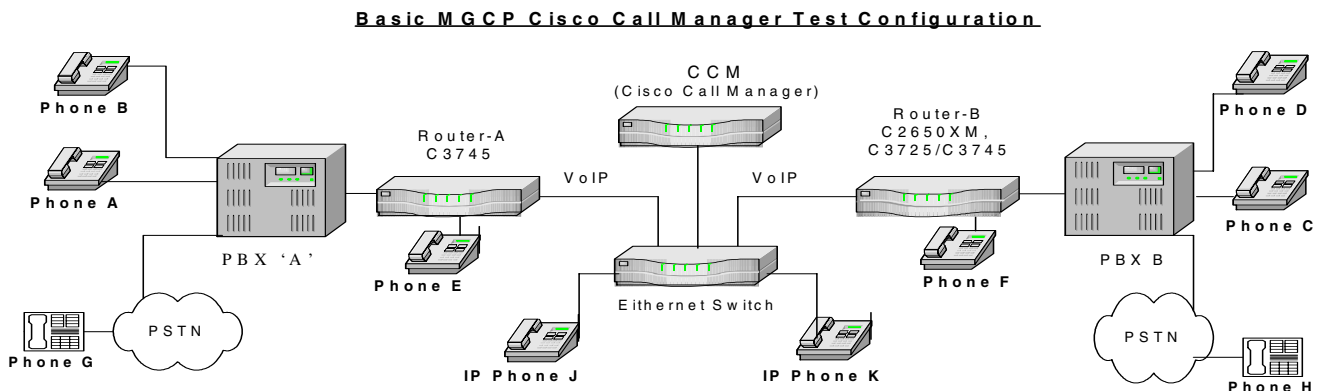
This application note is directed toward testing interoperability of the Soprano T1/E1 Voice Interface Module with an Avaya Definity G3r PBX.

The application note is for Connectivity/Interoperability testing of the selected PBX connected via Soprano T1/E1 and analog interfaces to a Cisco Multiservice IP-to-IP Gateway (C3745). The PBX/ Router under test are connected via Ethernet to an Ethernet switch which also has a Cisco CallManager and IP Phones in the Network Topology.

Figure 1 shows the test set-up for a Cisco Voice Gateway connected through an Ethernet switch and being controlled via MGCP by the Cisco CallManager.

Network Topology

Figure 1. Network Topology or Test Setup



The above diagram is representative of the various configurations used for testing. As shown in the diagram above, a PBX is connected via an interface to a Cisco router, which in turn, is connected to an Ethernet switch which also has the CCM (cisco call manager) IP Phones and a second Cisco router. The second Cisco router is connected to a second PBX. The interoperability testing involved signaling and audio path confirmation on the voice interfaces under test between each Cisco router and it's associated PBX.



Limitations

When the Meridian phone is disconnected from a call, it returns to dial-tone.

Due to the CO Trunk connection to the PBX, the incoming calls are directed to a digital phone and Blind Transferred to the PSTN Phone.

When an incoming call is answered and the Blind Transferred to the PSTN phone, the Meridian does not drop the PSTN call, though the CO Trunk call has disconnected.

System Components

Hardware Requirements

Cisco Hardware

Cisco C3745

PBX Hardware including Interface Card

Avaya Definity G3r

Special Cards, Blades, or Cables Required

NM-HDV2-2T1/E1 (2-port T1/E1 IP communications high-density digital voice/fax network module)

PVDM2-8 (8-channel packet fax/voice digital signal processor module)

PVDM2-16 (16-channel packet fax/voice digital signal processor module)

PVDM2-32 (32-channel packet fax/voice digital signal processor module)

PVDM2-48 (48-channel packet fax/voice digital signal processor module)

PVDM2-64 (64-channel packet fax/voice digital signal processor module)

VIC2-2 FXS (two-port voice interface card – Foreign Exchange Station)

VIC2-4 FXS (four-port voice interface card – Foreign Exchange Station)

Software Requirements

Cisco CallManager Release

Release 4.0

PBX software release

Avaya Definity G3r - V6

Cisco IOS Release or Cisco CatOS Release (for the gateway)

Cisco IOS Software, 3700 Software (C3745-ADVENTERPRISEK9-M), Version 12.3(7)T, RELEASE SOFTWARE (fc1)



Configuration

Configuration Sequence and Tasks

List the configuration sequence for software or hardware.

Configuration Menus and Commands

Show configuration menus, configuration commands or screen captures.

Configuring the Avaya Definity G3r

```
display trunk-group 7                                     Page 1 of 11
TRUNK GROUP
Group Number: 7          Group Type: co          CDR Reports: y
Group Name: CO TRUNK - SLOT 7      COR: 1      TN: 1      TAC: 607
Direction: two-way      Outgoing Display? y
Dial Access? y          Busy Threshold: 99      Night Service:
Queue Length: 0          Country: 1          Incoming Destination: 4004
Comm Type: voice        Auth Code? n      Digit Absorption List:
Prefix-1? n             Trunk Flash? n   Toll Restricted? n

TRUNK PARAMETERS
Trunk Type: ground-start
Outgoing Dial Type: tone          Cut-Through? y
Trunk Termination: 600ohm        Disconnect Timing(nsec): 500

Auto Guard? n      Call Still Held? n      Sig Bit Inversion: none
Terminal Balanced? n      RA Trunk Loss: 0db

Trunk Gain: high

Disconnect Supervision - In? y Out? y
Answer Supervision Timeout: 10      Receive Answer Supervision? n

CANCEL  REFRESH  [ ]  [ ]  HELP  GO TO  NEXT  PREU
        PAGE     PAGE     PAGE
```



```
display trunk-group 7 Page 2 of 11
TRUNK FEATURES
  ACA Assignment? n           Measured: none
                               Maintenance Tests? y
  Data Restriction? n

  Abandoned Call Search? n
  Suppress # Outpulsing? n

  Charge Conversion: 1
    Decimal Point: none
    Currency Symbol:
    Charge Type: units



---


CANCEL  REFRESH  [ ]  [ ]  HELP  GO TO  NEXT  PREV
        PAGE    PAGE    PAGE
```

```
display trunk-group 7 Page 3 of 11
TRUNK GROUP
ADMINISTRABLE TIMERS
  Incoming Disconnect(msec): 500      Outgoing Disconnect(msec): 500
  Incoming Glare Guard(msec): 1500    Outgoing Dial Guard(msec): 1600
                                       Outgoing Glare Guard(msec): 1500

  Ringing Monitor(msec): 5200         Incoming Seizure(msec): 500
  Outgoing End of Dial(sec): 10       Outgoing Seizure Response(sec): 5
  Programmed Dial Pause(msec): 1500   Disconnect Signal Error(sec): 240
  Flash Length(msec): 540

END TO END SIGNALING
  Tone(msec): 350      Pause(msec): 150

OUTPULSING INFORMATION
  PPS: 10  Make(msec): 40  Break(msec): 60  PPM? n



---


CANCEL  REFRESH  [ ]  [ ]  HELP  GO TO  NEXT  PREV
        PAGE    PAGE    PAGE
```



```
display trunk-group 7 Page 4 of 11
ATMS THRESHOLDS
TTL Type: 105-w-r1      Far End Test No:
TTL Vendor:             TTL Contact:
Trunk Vendor:           Trunk Contact:
Trunk Length:

MARGINAL                UNACCEPTABLE
  Min  Max              Min  Max
1004 Hz Loss: -2    21   -2    21

-Dev  +Dev              -Dev  +Dev
 404 Hz Loss:  9     9     9     9
2804 Hz Loss:  9     9     9     9

Maximum C Message Noise:  55          55
Maximum C Notched Noise:  74          74
Minimum SRL-HI:           0            0
Minimum SRL-LO:           0            0
Minimum ERL:              0            0

Allow ATMS Busyout, Error Logging and Alarming? n

CANCEL  REFRESH  [ ]  [ ]  HELP  GO TO PAGE  NEXT PAGE  PREV PAGE
```

```
display trunk-group 7 Page 5 of 11
TRUNK GROUP
Administered Members (min/max):  1/1
Total Administered Members:      1

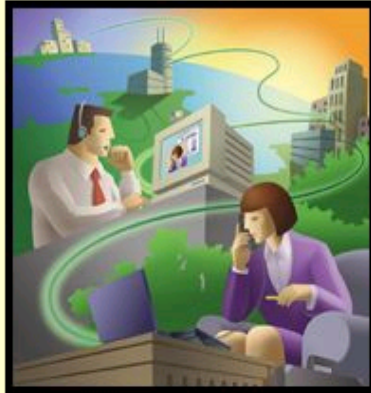
GROUP MEMBER ASSIGNMENTS

Port  Code Sfx Name      Night      Mode      Type      Ans Delay
1: 01A0701 TN747 B
2:
3:
4:
5:
6:
7:
8:
9:
10:
11:
12:
13:
14:
15:

CANCEL  REFRESH  [ ]  [ ]  HELP  GO TO PAGE  NEXT PAGE  PREV PAGE
```



Configuring Cisco CallManager



Cisco CallManager 4.0 Administration

Details

Copyright © 1999 - 2003 Cisco Systems, Inc.
All rights reserved.

This product contains cryptographic features and is subject to United States and local country laws governing import, export, transfer and use. Delivery of Cisco cryptographic products does not imply third-party authority to import, export, distribute or use encryption. Importers, exporters, distributors and users are responsible for compliance with U.S. and local country laws. By using this product you agree to comply with applicable laws and regulations. If you are unable to comply with U.S. and local laws, return this product immediately.

A summary of U.S. laws governing Cisco cryptographic products may be found at:

<http://www.cisco.com/www/export/crypto/tool/stqrg.html>.

If you require further assistance please contact us by sending email to export@cisco.com.





Cisco CallManager Component Versions

[Latest Installed Version](#)
[Out Of Sync](#)

Servers

172.20.43.253

Component Versions for all servers:

Page

Component	Version	Installation ID
ace.dll	5.2.5.0	CCM4.0(1)
aced.dll	5.2.5.0	CCM4.0(1)
Apache Tomcat	4.1	CCM4.0(1)
ASTIsapi.dll	3.3.2.0	CCM4.0(1)
AudioTranslator.exe	4.0.0.1	CCM4.0(1)
Aupair.exe	4.0.0.37	CCM4.0(1)
AupairChangeNotify.dll	4.0.0.37	CCM4.0(1)
Aupairps.dll	3.4.0.33	CCM4.0(1)
AuthFilt.dll	4.0.0.0	CCM4.0(1)
AVVIDCustomerDirectoryConfigurationPlugin.exe	4.0.0.31(0)	CCM4.0(1)
bootp.exe	2.0.2.2	CCM4.0(1)
ccm.exe	4.0.0.0	CCM4.0(1)
CcmPerfMon.dll	4.0.0.0	CCM4.0(1)
CCNTEST.EXE	4.0.0.0	CCM4.0(1)
cdpintf.dll	4.0.0.0	CCM4.0(1)
Cisco CallManager	4.0(1)	CCM4.0(1)
Cisco CallManager Administration	4.0(0.333)	CCM4.0(1)
Cisco CallManager Serviceability	4.0(0.1)	CCM4.0(1)



Find and List Phones

[Add a New Phone](#)





2 matching record(s) for Device Name begins with ""

Find phones where begins with

and show items per page. Allow wildcards.

To list all items, click Find without entering any search text, or use "Device Name is not empty" as the search.

Real-time Information Service returned information for 2 of 2 devices listed below.

<input type="checkbox"/>	Device Name	Description	Device Pool	Status	IP Address	Copy
<input type="checkbox"/>	 SEP000A8A2C8601	Auto 5001	Default	172.20.43.253	172.20.43.100	
<input type="checkbox"/>	 SEP000A8A48FA59	Auto 5000	Default	172.20.43.253	172.20.43.101	

First Previous Next Last

Page of 1



Gateway Configuration

[Back to Find/List Gateways](#)

Product: Cisco 3745

Gateway : A-3745

Status: Ready

Domain Name*

Description

Cisco CallManager Group*

Installed Voice Interface Cards

Endpoint Identifiers

Mainboard Slot

Module in Slot 1

Module in Slot 2

Module in Slot 3

Module in Slot 4

Subunit 0	<input type="text" value="VIC2-2FXS"/>	Begin	(4/0/0)	(4/0/1)
		Port	0	1
Subunit 1	<input type="text" value="VIC2-2MFT-E1"/>	Begin	(4/0/0)	(4/1/1)
		Port	0	1

Product Specific Configuration



Global ISDN Switch Type

Switchback Timing*

Switchback uptime-delay (min)

Switchback schedule (hh:mm)

* indicates required item



Gateway Configuration

[Back to main Gateway Configuration](#)
[Back to Find/List Gateways](#)
[Dependency Records](#)

Slot 4/ Sub-Unit 0

	4/0/0	5400
	4/0/1	5401

Slot 4

	4/0
	4/1

Product : Cisco 3745

Gateway : AALN/S4/SU0/0@A-3745

Registration: Registered with Cisco CallManager 172.20.43.253

IP Address: [172.20.43.151](#)

Status: Ready

Gateway Information

Description	<input type="text" value="AALN/S4/SU0/0@172.20.43.151"/>
Device Pool*	<input type="text" value="Default"/>
Calling Search Space	<input type="text" value="< None >"/>
AAR Calling Search Space	<input type="text" value="< None >"/>
Media Resource Group List	<input type="text" value="< None >"/>
Network Hold Audio Source	<input type="text" value="< None >"/>
Location	<input type="text" value="< None >"/>
AAR Group	<input type="text" value="< None >"/>
Network Locale	<input type="text" value="United States"/>

Multilevel Precedence and Preemption (MLPP) Information

MLPP Domain	<input type="text" value=""/> (e.g., "0000FF")
MLPP Indication	Not available on this device
MLPP Preemption	Not available on this device

Port Information

Prefix DN	<input type="text" value=""/>
Num Digits*	<input type="text" value="4"/>
Expected Digits*	<input type="text" value="0"/>
SMDI Port Number(0-4096)*	<input type="text" value="0"/>



Directory Number Configuration [Configure Device \(AALN/S4/SU0/0@A-3745\)](#) [Dependency Records](#)

Associated With

FXS AALN/S4/SU0/0@A-
MGCP 3745 (Port 1)

Directory Number: 5400

Status: Ready

Note: Any update to this Directory Number automatically resets the associated devices

Directory Number

Directory Number*

Partition

Directory Number Settings

Voice Mail Profile
(Choose <None> to use default)

Calling Search Space

AAR Group

Network Hold Audio Source

Auto Answer Not available on this device.

Call Forward and Pickup Settings

	Voice Mail Destination	Calling Search Space
Forward All <input type="checkbox"/>	<input type="text"/>	<input type="text" value=" < None >"/>
Forward Busy <input type="checkbox"/>	<input type="text"/>	<input type="text" value=" < None >"/>
Forward No Answer <input type="checkbox"/>	<input type="text"/>	<input type="text" value=" < None >"/>
No Answer Ring Duration <input type="text"/>	(seconds)	
Call Pickup Group <input type="text"/>	<input type="text" value=" < None >"/>	

MLPP Alternate Party Settings

Target (Destination)

Calling Search Space

No Answer Ring Duration (seconds)

Line Settings for this Device

Display (Internal Caller ID)

Line Text Label Not available on this device.

External Phone Number Mask

Message Waiting Lamp Policy Not available on this device.

Ring Setting (Phone Idle) Not available on this device.

Ring Setting (Phone Active)** Not available on this device.



Multiple Call / Call Waiting Settings

Maximum Number of Calls* (1 - 2)

Busy Trigger* (<= Max. Calls)

Forwarded Call Information Display

Caller Name

Caller Number

Redirected Number

Dialed Number

* indicates required item; changes to Line or Directory Number settings require restart.

Note:

If you are using a language other than English for Display (Internal Caller ID) or Line Text Label text, make sure the correct character set (shown below) is selected. Text displays incorrectly if the wrong character set is selected. (English characters are included in all character sets.)

Character Set



Gateway Configuration

[Back to Find/List Gateways](#)

Product: Cisco 26XX
Gateway : B-2611XM

Status: Ready

Domain Name*

Description

Cisco CallManager Group*

Installed Voice Interface Cards

Endpoint Identifiers

Module in slot 0

Module in slot 1

Subunit	Card	Begin Port	Endpoint Identifiers
Subunit 0	<input type="text" value="VIC-4FXS"/>	Begin Port <input type="text" value="0"/>	<div style="display: flex; justify-content: space-around;"> <div style="text-align: center;">(1/0/0) POTS </div> <div style="text-align: center;">(1/0/1) POTS </div> <div style="text-align: center;">(1/0/2) POTS </div> </div> <div style="text-align: center; margin-top: 5px;">(1/0/3) POTS </div>
Subunit 1	<input type="text" value="VVIC-2MFT-E1"/>	Begin Port <input type="text" value="0"/>	<div style="display: flex; justify-content: space-around;"> <div style="text-align: center;">(1/0) </div> <div style="text-align: center;">(1/1) </div> </div>

Product Specific Configuration



Switchback Timing*

Switchback uptime-delay (min)

Switchback schedule (hh:mm)

* indicates required item

[Back to Find/List Gateways](#)



Gateway Configuration

[Back to main Gateway Configuration](#)

[Back to Find/List Gateways](#)

[Dependency Records](#)

Slot 1/ Sub-Unit 0

	1/0/0	5100
	1/0/1	5101
	1/0/2	5102
	1/0/3	5104

Product : Cisco 26XX

Gateway : AALN/S1/SU0/0@B-2611XM

Registration: Registered with Cisco CallManager 172.20.43.253

IP Address: [172.20.43.155](#)

Status: Ready

Slot 1

	1/0
	1/1

Gateway Information

Description	<input type="text" value="AALN/S1/SU0/0@B-2611XM"/>
Device Pool*	<input type="text" value="Default"/>
Calling Search Space	<input type="text" value="< None >"/>
AAR Calling Search Space	<input type="text" value="< None >"/>
Media Resource Group List	<input type="text" value="< None >"/>
Network Hold Audio Source	<input type="text" value="< None >"/>
Location	<input type="text" value="< None >"/>
AAR Group	<input type="text" value="< None >"/>
Network Locale	<input type="text" value="< None >"/>

Multilevel Precedence and Preemption (MLPP) Information

MLPP Domain	<input type="text" value=""/> (e.g., "0000FF")
MLPP Indication	Not available on this device
MLPP Preemption	Not available on this device

Port Information

Prefix DN	<input type="text"/>
Num Digits*	<input type="text" value="0"/>
Expected Digits*	<input type="text" value="0"/>
SMDI Port Number(0-4096)*	<input type="text" value="0"/>



Directory Number Configuration

[Configure Device \(AALN/S1/SU0/0@B-2611XM\)](#)
[Dependency Records](#)

Associated With

AALN/S1/SU0/0@B-2... (Port 1)

Directory Number: 5100

Status: Ready

Note: Any update to this Directory Number automatically resets the associated devices

Directory Number

Directory Number*

Partition

Directory Number Settings

Voice Mail Profile
(Choose <None> to use default)

Calling Search Space

AAR Group

Network Hold Audio Source

Auto Answer Not available on this device.

Call Forward and Pickup Settings

	Voice Mail Destination	Calling Search Space
Forward All	<input type="checkbox"/> <input style="border: none;" type="text"/>	<input style="border: none;" type="text" value=" < None > "/>
Forward Busy	<input type="checkbox"/> <input style="border: none;" type="text"/>	<input style="border: none;" type="text" value=" < None > "/>
Forward No Answer	<input type="checkbox"/> <input style="border: none;" type="text"/>	<input style="border: none;" type="text" value=" < None > "/>
No Answer Ring Duration	<input style="border: none;" type="text"/> (seconds)	
Call Pickup Group	<input style="border: none;" type="text" value=" < None > "/>	

MLPP Alternate Party Settings

Target (Destination)

Calling Search Space

No Answer Ring Duration (seconds)



Line Settings for this Device	
Display (Internal Caller ID)	<input type="text" value="2600-fxs1/0/0"/>
Line Text Label	Not available on this device.
External Phone Number Mask	<input type="text"/>
Message Waiting Lamp Policy	Not available on this device.
Ring Setting (Phone Idle)	Not available on this device.
Ring Setting (Phone Active)**	Not available on this device.
Multiple Call / Call Waiting Settings	
Maximum Number of Calls*	<input type="text" value="2"/> (1 - 2)
Busy Trigger*	<input type="text" value="1"/> (<= Max. Calls)
Forwarded Call Information Display	
<input checked="" type="checkbox"/> Caller Name	<input checked="" type="checkbox"/> Caller Number
<input checked="" type="checkbox"/> Redirected Number	<input checked="" type="checkbox"/> Dialed Number
<small>* indicates required item; changes to Line or Directory Number settings require restart.</small>	
Note: If you are using a language other than English for Display (Internal Caller ID) or Line Text Label text, make sure the correct character set (shown below) is selected. Text displays incorrectly if the wrong characterset is selected. (English characters are included in all character sets.)	
Character Set	<input type="text" value="Western European (Latin 1)"/>

Configuring the Cisco C3745

A-3745#sho running

Building configuration...

Current configuration : 1833 bytes

```
!  
version 12.3  
service timestamps debug datetime msec  
service timestamps log datetime msec  
no service password-encryption  
!  
hostname A-3745  
!  
boot-start-marker  
boot-end-marker  
!
```



```
no network-clock-participate slot 1
no network-clock-participate slot 2
no network-clock-participate slot 3
no network-clock-participate slot 4
no network-clock-participate wic 0
no network-clock-participate wic 1
no network-clock-participate wic 2
no network-clock-participate aim 0
no network-clock-participate aim 1
no aaa new-model
ip subnet-zero
ip cef
!
ip host B9 172.20.43.253
ip audit po max-events 100
no ftp-server write-enable
voice-card 4
    no dspfarm
!
ccm-manager mgcp
ccm-manager music-on-hold
ccm-manager config server 172.20.43.253
ccm-manager config
!
no crypto isakmp enable
!
interface FastEthernet0/0
    ip address 172.20.43.151 255.255.255.0
    duplex auto
    speed auto
!
interface FastEthernet0/1
```



```
no ip address
shutdown
duplex auto
speed auto
!
ip classless
ip route 0.0.0.0 0.0.0.0 FastEthernet0/0
!
ip http server
no ip http secure-server
!
control-plane
!
voice-port 4/0/0
!
voice-port 4/0/1
!
mgcp
mgcp call-agent 172.20.43.253 2427 service-type mgcp version 0.1
mgcp dtmf-relay voip codec all mode out-of-band
mgcp rtp unreachable timeout 1000 action notify
mgcp modem passthrough voip mode nse
mgcp package-capability rtp-package
no mgcp package-capability res-package
mgcp package-capability sst-package
no mgcp package-capability fxr-package
no mgcp timer receive-rtcp
mgcp sdp simple
mgcp fax t38 inhibit
mgcp rtp payload-type g726r16 static
!
mgcp profile default
```



```
!  
dial-peer voice 999400 pots  
  application mgcpapp  
  port 4/0/0  
!  
dial-peer voice 999401 pots  
  application mgcpapp  
  port 4/0/1  
!  
line con 0  
line aux 0  
line vty 0 4  
  login  
!  
end
```

Samples of Paragraph Styles

This is Subhead1

This is Body.

This is Subhead2

This is Body.

This is Subhead3.

This is Body.

This is Subhead4.

This is Body.

This is Subhead5.

This is Body.



- This is Bullet. This is Bullet. This is Bullet. This is Bullet. This is Bullet. This is Bullet. This is Bullet. This is Bullet. This is Bullet. This is Bullet.
- This is Bullet2. This is Bullet2. This is Bullet2. This is Bullet2. This is Bullet2. This is Bullet2. This is Bullet2. This is Bullet2. This is Bullet2. This is Bullet2. This is Bullet2. This is Bullet2.

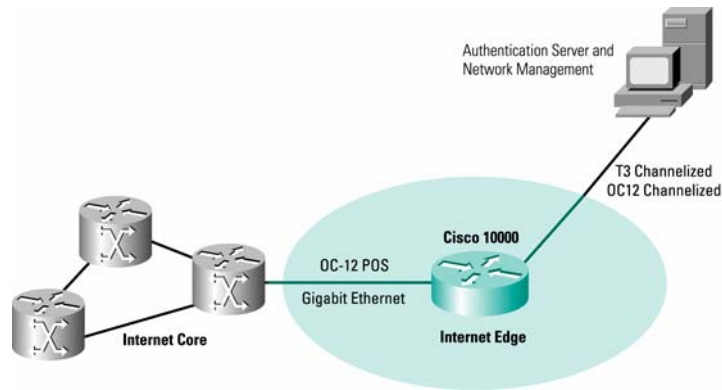
This is Example.

This is Example.

This is Example.

Use the Caption_head Style Sheet for Caption Head

Use the Caption Style Sheet for caption body text. This is a caption for photos, diagrams and charts. This is a caption for photos, diagrams and charts.



Use the Caption_head Style Sheet for Caption Head

Use the Caption Style Sheet for caption body text. This is a caption for photos, diagrams and charts. This is a caption for photos, diagrams and charts.

Chart_head Style Sheet Text	Chart_head Style Sheet Text	Chart_head Style Sheet Text
Chart_subhead Style Sheet	Chart_subhead Style Sheet	Chart_subhead Style Sheet
Chart_body Style Sheet	Chart_body Style Sheet	Chart_body Style Sheet
Chart_body Style Sheet	Chart_body Style Sheet	Chart_body Style Sheet

Acronyms

Acronym	Definitions



Important Information

THE SPECIFICATIONS AND INFORMATION REGARDING THE PRODUCTS IN THIS MANUAL ARE SUBJECT TO CHANGE WITHOUT NOTICE. ALL STATEMENTS, INFORMATION, AND RECOMMENDATIONS IN THIS MANUAL ARE BELIEVED TO BE ACCURATE BUT ARE PRESENTED WITHOUT WARRANTY OF ANY KIND, EXPRESS OR IMPLIED. USERS MUST TAKE FULL RESPONSIBILITY FOR THEIR APPLICATION OF ANY PRODUCTS.

IN NO EVENT SHALL CISCO OR ITS SUPPLIERS BE LIABLE FOR ANY INDIRECT, SPECIAL, CONSEQUENTIAL, OR INCIDENTAL DAMAGES, INCLUDING, WITHOUT LIMITATION, LOST PROFITS OR LOSS OR DAMAGE TO DATA ARISING OUT OF THE USE OR INABILITY TO USE THIS MANUAL, EVEN IF CISCO OR ITS SUPPLIERS HAVE BEEN ADVISED OF THE POSSIBILITY OF SUCH DAMAGES.



Corporate Headquarters

Cisco Systems, Inc.
170 West Tasman Drive
San Jose, CA 95134-1706
USA
www.cisco.com
Tel: 408 526-4000
800 553-NETS (6387)
Fax: 408 526-4100

European Headquarters

Cisco Systems International
BV
Haarlerbergpark
Haarlerbergweg 13-19
1101 CH Amsterdam
The Netherlands
www-europe.cisco.com
Tel: 31 0 20 357 1000
Fax: 31 0 20 357 1100

Americas Headquarters

Cisco Systems, Inc.
170 West Tasman Drive
San Jose, CA 95134-1706
USA
www.cisco.com
Tel: 408 526-7660
Fax: 408 527-0883

Asia Pacific Headquarters

Cisco Systems, Inc.
Capital Tower
168 Robinson Road
#22-01 to #29-01
Singapore 068912
www.cisco.com
Tel: +65 317 7777
Fax: +65 317 7799

Cisco Systems has more than 200 offices in the following countries and regions. Addresses, phone numbers, and fax numbers are listed on the Cisco Web site at www.cisco.com/go/offices.

Argentina • Australia • Austria • Belgium • Brazil • Bulgaria • Canada • Chile • China PRC • Colombia • Costa Rica • Croatia • Czech Republic • Denmark • Dubai, UAE • Finland • France • Germany • Greece • Hong Kong SAR • Hungary • India • Indonesia • Ireland • Israel • Italy • Japan • Korea • Luxembourg • Malaysia • Mexico • The Netherlands • New Zealand • Norway • Peru • Philippines • Poland • Portugal • Puerto Rico • Romania • Russia • Saudi Arabia • Scotland • Singapore • Slovakia • Slovenia • South Africa • Spain • Sweden • Switzerland • Taiwan • Thailand • Turkey • Ukraine • United Kingdom • United States • Venezuela • Vietnam • Zimbabwe

Copyright 2003 Cisco Systems, Inc. All rights reserved. Cisco, Cisco Systems, and the Cisco Systems logo are registered trademarks or trademarks of Cisco Systems, Inc. and/or its affiliates in the U.S. and certain other countries. All other trademarks mentioned in this document or Web site are the property of their respective owners. The use of the word partner does not imply a partnership relationship between Cisco and any other company. (0301R)