



Clientless SSL VPN Troubleshooting

- [Recover from Hosts File Errors When Using Application Access, on page 1](#)
- [WebVPN Conditional Debugging, on page 4](#)
- [Send an Administrator's Alert to Clientless SSL VPN Users, on page 5](#)
- [Protect Clientless SSL VPN Session Cookies, on page 5](#)

Recover from Hosts File Errors When Using Application Access

To prevent hosts file errors that can interfere with Application Access, close the Application Access window properly when you finish using Application Access. To do so, click the close icon.

When Application Access terminates abnormally, the `hosts` file remains in a Clientless SSL VPN-customized state. Clientless SSL VPN checks the state the next time you start Application Access by searching for a `hosts.webvpn` file. If it finds one, a `Backup HOSTS File Found` error message appears, and Application Access is temporarily switched off.

If Application Access is stopped improperly, you leave the remote access client/server applications in limbo. If you try to start these applications without using Clientless SSL VPN, they may malfunction. You may find that hosts that you normally connect to are unavailable. This situation could commonly occur if you run applications remotely from home, fail to quit the Application Access window before shutting down the computer, then try to run the applications later from the office.

The following errors can occur if you do not close the Application Access window properly:

- The next time you try to start Application Access, it may be switched off; you receive a `Backup HOSTS File Found` error message.
- The applications themselves may be switched off or malfunction, even when you are running them locally.

These errors can result from terminating the Application Access window in any improper way. For example:

- Your browser crashes while you are using Application Access.
- A power outage or system shutdown occurs while you are using Application Access.
- You minimize the Application Access window while you are working, then shut down your computer with the window active (but minimized).

Understanding the Hosts File

The hosts file on your local system maps IP addresses to hostnames. When you start Application Access, Clientless SSL VPN modifies the hosts file, adding Clientless SSL VPN-specific entries. Stopping Application Access by properly closing the Application Access window returns the file to its original state.

Before invoking Application Access...	hosts file is in original state.
When Application Access starts...	<ul style="list-style-type: none"> • Clientless SSL VPN copies the hosts file to hosts.webvpn, thus creating a backup. • Clientless SSL VPN then edits the hosts file, inserting Clientless SSL VPN-specific information.
When Application Access stops...	<ul style="list-style-type: none"> • Clientless SSL VPN copies the backup file to the <code>hosts</code> file, thus restoring the hosts file to its original state. • Clientless SSL VPN deletes hosts.webvpn.
After finishing Application Access...	hosts file is in original state.



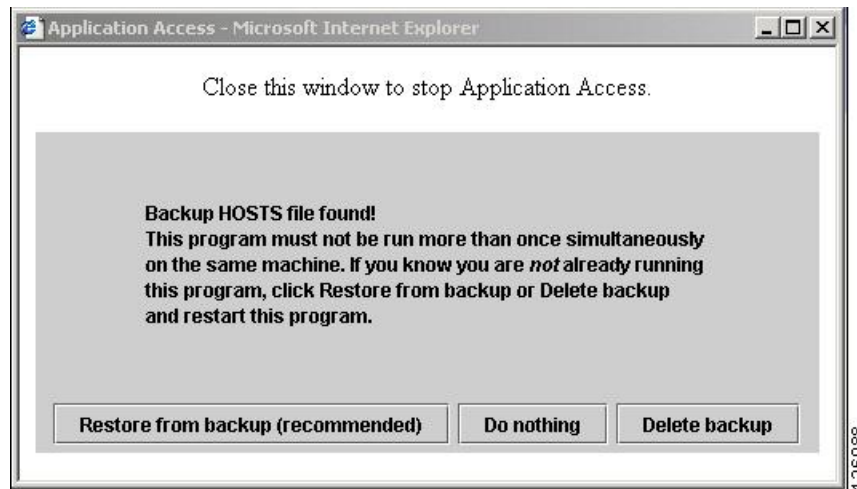
Note Microsoft anti-spyware software blocks changes that the port forwarding Java applet makes to the hosts file. See www.microsoft.com for information on how to allow hosts file changes when using anti-spyware software.

Reconfigure a Host's File Automatically Using Clientless SSL VPN

If you are able to connect to your remote access server, follow these steps to reconfigure the host's file and re-enable both Application Access and the applications.

Procedure

- Step 1** Start Clientless SSL VPN and log in.
Click the **Applications Access** link.



Step 2 Choose one of the following options:

- **Restore from backup**—Clientless SSL VPN forces a proper shutdown. It copies the `hosts.webvpn` backup file to the `hosts` file, restoring it to its original state, then deletes `hosts.webvpn`. You then have to restart Application Access.
- **Do nothing**—Application Access does not start. The remote access home page reappears.
- **Delete backup**—Clientless SSL VPN deletes the `hosts.webvpn` file, leaving the `hosts` file in its Clientless SSL VPN-customized state. The original `hosts` file settings are lost. Application Access then starts, using the Clientless SSL VPN-customized `hosts` file as the new original. Choose this option only if you are unconcerned about losing `hosts` file settings. If you or a program you use may have edited the `hosts` file after Application Access has shut down improperly, choose one of the other options, or edit the `hosts` file manually.

Reconfigure Hosts File Manually

If you are not able to connect to your remote access server from your current location, or if you have customized the `hosts` file and do not want to lose your edits, follow these steps to reconfigure the `hosts` file and reenable both Application Access and the applications.

Procedure

- Step 1** Locate and edit your `hosts` file. The most common location is `c:\windows\system32\drivers\etc\hosts`.
- Step 2** Check to see if any lines contain the string: `# added by WebVpnPortForward`. If any lines contain this string, your `hosts` file is Clientless SSL VPN-customized. If your `hosts` file is Clientless SSL VPN-customized, it looks similar to the following example:

```
server1 # added by WebVpnPortForward
server1.example.com invalid.cisco.com # added by WebVpnPortForward
server2 # added by WebVpnPortForward
server2.example.com invalid.cisco.com # added by WebVpnPortForward
```

```

server3 # added by WebVpnPortForward
server3.example.com invalid.cisco.com # added by WebVpnPortForward

# Copyright (c) 1993-1999 Microsoft Corp.
#
# This is a sample HOSTS file used by Microsoft TCP/IP for Windows.
#
# This file contains the mappings of IP addresses to hostnames. Each
# entry should be kept on an individual line. The IP address should
# be placed in the first column followed by the corresponding hostname.
# The IP address and the hostname should be separated by at least one
# space.
#
# Additionally, comments (such as these) may be inserted on individual
# lines or following the machine name denoted by a '#' symbol.
#
# For example:
#
#       102.54.94.97       cisco.example.com       # source server
#       38.25.63.10      x.example.com           # x client host

123.0.0.1      localhost

```

- Step 3** Delete the lines that contain the string: # added by WebVpnPortForward
- Step 4** Save and close the file.
- Step 5** Start Clientless SSL VPN and log in.
- Step 6** Click the **Application Access** link.

WebVPN Conditional Debugging

With multiple sessions running on a remote access VPN, troubleshooting can be difficult given the size of the logs. You can use the **debug webvpn condition** command to set up filters to target your debug process more precisely.

```
debug webvpn condition {group name | p-ipaddress ip_address [{subnet subnet_mask | prefix length}] | reset | user name}
```

Where:

- **group name** filters on a group policy (not a tunnel group or connection profile).
- **p-ipaddress ip_address** [{*subnet subnet_mask* | **prefix length**}] filters on the public IP address of the client. The subnet mask (for IPv4) or prefix (for IPv6) is optional.
- **reset** resets all filters. You can use the **no debug webvpn condition** command to turn off a specific filter.
- **user name** filters by username.

If you configure more than one condition, the conditions are conjoined (ANDed), so that debugs are shown only if all conditions are met.

After setting up the condition filter, use the base **debug webvpn** command to turn on the debug. Simply setting the conditions does not enable the debug. Use the **show debug** and **show webvpn debug-condition** commands to view the current state of debugging.

The following shows an example of enabling a conditional debug on the user jdoe.

```
asa3(config)# debug webvpn condition user jdoe

asa3(config)# show webvpn debug-condition
INFO: Webvpn conditional debug is turned ON
INFO: User name filters:
INFO: jdoe

asa3(config)# debug webvpn
INFO: debug webvpn enabled at level 1.

asa3(config)# show debug
debug webvpn enabled at level 1
INFO: Webvpn conditional debug is turned ON
INFO: User name filters:
INFO: jdoe
```

Send an Administrator's Alert to Clientless SSL VPN Users

Procedure

-
- | | |
|---------------|---|
| Step 1 | In the main ASDM application window, choose Tools > Administrator's Alert Message to Clientless SSL VPN Users . |
| Step 2 | Enter the new or edited alert content to send, and then click Post Alert . |
| Step 3 | To remove current alert content and enter new alert content, click Cancel Alert . |
-

Protect Clientless SSL VPN Session Cookies

Embedded objects such as Flash applications and Java applets, as well as external applications, usually rely on an existing session cookie to work with the server. They get it from a browser using some Javascript on initialization. Adding the httponly flag to the Clientless SSL VPN session cookie makes the session cookie only visible to the browser, not the client-side scripts, and it makes session sharing impossible.

Before you begin

- Change the VPN session cookie setting only when there are no active Clientless SSL VPN sessions.
- Use the **show vpn-sessiondb webvpn** command to check the status of Clientless SSL VPN sessions.
- Use the **vpn-sessiondb logoff webvpn** command to log out of all Clientless SSL VPN sessions.
- The following Clientless SSL VPN features will not work when the **http-only-cookie** command is enabled:
 - Java plug-ins
 - Java rewriter
 - Port forwarding

- File browser
- Sharepoint features that require desktop applications (for example, MS Office applications)
- AnyConnect Web launch
- Citrix Receiver, XenDesktop, and Xenon
- Other non-browser-based and browser plugin-based applications

To prevent a Clientless SSL VPN session cookie from being accessed by a third party through a client-side script such as Javascript, perform the following steps:

Procedure

Step 1 Choose **Configuration > Remote Access VPN > Clientless SSL VPN Access > Advanced > HTTP Cookie**.

Step 2 Check the **Enable HTTP-only VPN cookies** check box.

Note Use this setting only if Cisco TAC advises you to do so. Enabling this command presents a security risk because the Clientless SSL VPN features listed under the Guidelines section will not work without any warning.

Step 3 Click **Apply** to save your changes.
