

# CISCO ACE APPLICATION CONTROL ENGINE INTEGRATION WITH ORACLE E-BUSINESS SUITE 12



170 West Tasman Drive  
San Jose, CA 95134  
Telephone: +1.408.526.4000  
[www.cisco.com](http://www.cisco.com)  
[www.cisco.com/go/oracle](http://www.cisco.com/go/oracle)

*Integration Optimizes Application Deployment, Enabling High Availability, Performance, and Security, and Lower Cost of Ownership for Oracle E-Business Suite 12*

## Company Overview

Cisco (NASDAQ: CSCO) is the worldwide leader in networking, transforming how people connect, communicate, and collaborate. Information about Cisco can be found at [www.cisco.com](http://www.cisco.com)

## Integration Overview

The Cisco ACE Application Control Engine is an intelligent, network-based load-balancing and content-switching solution with leading acceleration and security capabilities.

To address challenges of today's mission-critical enterprise application deployments, Cisco offers the validated solution of Cisco ACE for Oracle E-Business Suite 12. The solution optimizes application availability, performance, and security, and lowers application ownership costs.

Features offered by this integration include

- **Advanced server load balancing with session persistence:** Increases availability through routing end-user and Web services requests to the best available server without losing transaction state
- **Application health monitoring and server management:** Increases availability through continuously and intelligently monitoring application, database, and server availability, and rerouting traffic in the event of application-level failure
- **SSL termination and acceleration:** Increases security and performance through encrypting and decrypting SSL-enabled traffic, which reduces server CPU usage, centralizes certificate management, and facilitates the use of intrusion detection and prevention
- **Network platform health monitoring:** Increases availability through ensuring the continuity of business operations by mirroring end-user transactions across a pair of ACE solutions and rerouting traffic in the event of an ACE failure
- **Virtualization / roll-based access control:** Lowers total cost of ownership by partitioning a single physical ACE solution into many logical ACE contexts, accelerating and scaling application deployments, reducing power and cooling costs, and delegating management by roles



Through the Oracle PartnerNetwork Application Integration Architecture for Partners Initiative, partners with validated integrations are able to provide customers with standards-based product integrations, tested and validated by Oracle. Customers benefit from improved risk management and smoother upgrade capability, leading to a lower total cost of ownership and greater overall satisfaction.

## Availability

Available immediately. For more information, contact [solutionsfororacle@cisco.com](mailto:solutionsfororacle@cisco.com)

## Support

Supported through Cisco's technical support services.

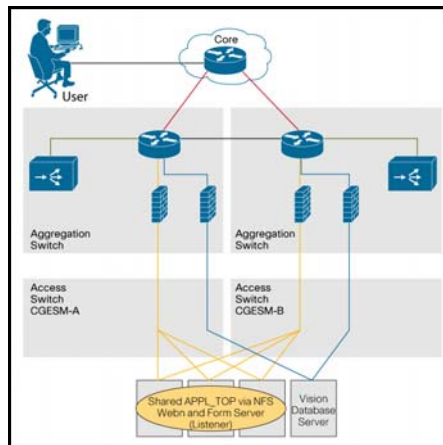
Cisco Systems, Inc.  
170 West Tasman Drive  
San Jose, CA 95134  
Telephone +1.408.526.4000  
[www.cisco.com](http://www.cisco.com)  
[www.cisco.com/go/oracle](http://www.cisco.com/go/oracle)

## Integration Details

Cisco ACE resides in front of the application servers in the data center and provides application optimization services for multiple Oracle application deployments as well as other enterprise applications.

Because of its location, ACE can take intelligent action on end-user traffic before it is routed to the Web servers and Oracle E-Business Suite application servers. Actions that can be performed by ACE include advanced load balancing, system health monitoring and event-based traffic redirection, SSL termination, TCP connection management, and security access control. Cisco ACE provides these services cost-effectively on a virtualized platform, lowering server processing and memory requirements.

The recommended best practices and implementation guidance for Cisco ACE and other Cisco application networking solutions, such as Cisco Wide Area Application Services and Cisco Firewall Service Module for Oracle E-Business Suite 12, can be found in the Cisco Application Networking for Oracle E-Business Suite 12 Deployment Guide at [www.cisco.com/go/oracle](http://www.cisco.com/go/oracle)



Oracle E-Business Suite testbed topology in Cisco's San Jose, California lab

## Environment

### Partner Environment

Cisco ACE Application Control Engine, Version 2.1

### Oracle Environment

Oracle E-Business Suite 12.0.4

Oracle Database Server 10.2.0.3

Oracle Application Server 10g (10.1.3.0, 10.1.2.0)

For additional information about partnering with Oracle, please contact [opninfo\\_us@oracle.com](mailto:opninfo_us@oracle.com) or visit [partners.oracle.com](http://partners.oracle.com)

Oracle is a registered trademark of Oracle Corporation and/or its affiliates. Other names may be trademarks of their respective owners.