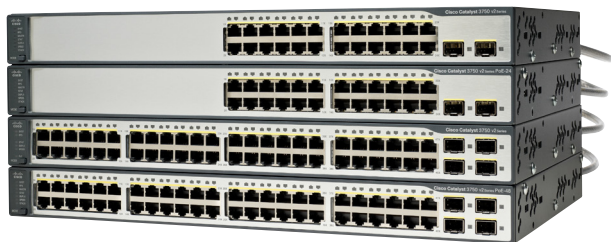




The Cisco® Catalyst® 3750 v2 Series is the next generation energy-efficient Layer 3 fast Ethernet, stackable switches. This new series of switches support Cisco EnergyWise technology, which enables companies to measure and manage power consumption of network infrastructure and network-attached devices, thereby reducing their energy costs and their carbon footprint. The Cisco Catalyst 3750 v2 Series consumes less power than its predecessors and is the ideal access layer switch for enterprise, retail, and branch-office environments, as it maximizes productivity and investment protection by enabling a unified network for data, voice, and video (figure 1).

Figure 1 Cisco Catalyst 3750 v2 Series Switches



Product Highlights

- Lower power consumption than its predecessors
- Backward compatible with Cisco Catalyst 3750 and 3750-E Series
- Full Energy Wise support to monitor energy consumption of network infrastructure and implement energy saving programs to reduce energy costs
- Compatible with Cisco Redundant Power System (RPS) 2300
- All units have a uniform depth of 11.9 inches for better cable management
- Preconfigurable with the Cisco IOS Software release at the time of ordering
- IPv6 routing included in the IP Services feature set

Cisco EnergyWise

The Cisco Catalyst 3750 v2 Series supports Cisco EnergyWise, which is a technology that enables monitoring, reporting, and management of energy consumption by end devices that are Cisco EnergyWise enabled. This technology enables companies to reduce their energy cost carbon footprint. These are some of the EnergyWise features available:

- Discover all Cisco EnergyWise enabled devices on the network
- Monitor and report power consumption by these devices
- Implement business rules to control power to these end devices

Cisco StackWise Technology

The Cisco Catalyst 3750 v2 Series are stackable switches with Cisco StackWise® technology. Cisco StackWise technology unites up to nine individual switches into a single logical unit, using special stack-interconnect cables and stacking software. Cisco StackWise stacking creates a 32-Gbps switch interconnection and does not require user ports for stacking. The Catalyst 3750 v2 Series are also fully compatible with Catalyst 3750 and 3750-E stackable switches.

Ease of Use and Deployment

With features such as auto smart ports, smart install, configuration replace and rollback, and auto QoS, the Cisco Catalyst 3750 v2 Series Switches are easy to deploy and manage.

Enhanced Security

The Cisco Catalyst 3750 v2 Series Switches have several security features, such as IEEE 802.1x, flexible authentication, multi-authentication, Web authentication, multi-domain authentication, VLAN ACLs, and port-based ACLs that enable a secure network.

Configurable Cisco IOS Software

The Cisco Catalyst 3750 v2 Series can be preconfigured with a specific Cisco IOS Software release at the time of ordering. This option eliminates the need to reload a specific Cisco IOS Software release during deployment, thereby reducing deployment time and cost. The Cisco IOS Software release to be preloaded can be selected from a list of supported Cisco IOS Software releases, including the crypto version.

Redundant Power System

The Cisco Catalyst 3750 v2 Series Switches support the Cisco RPS 2300, which increases availability in a converged data, voice, and video network by providing transparent power backup to two of six attached devices. The Cisco Catalyst 3750 v2 Series Switches are capable of reverting back to their internal power supply without any service interruption. In addition, the RPS 2300 can be managed using a Cisco Catalyst 3750 v2 Series Switch that is connected to the RPS 2300.

Ordering Information

Part Number	Description
WS-C3750V2-24TS-S	24 10/100 + 2 SFP IP Base
WS-C3750V2-24TS-E	24 10/100 + 2 SFP IP Services
WS-C3750V2-48TS-S	48 10/100 + 4 SFP IP Base
WS-C3750V2-48TS-E	48 10/100 + 4 SFP IP Services
WS-C3750V2-24PS-S	24 10/100 PoE + 2 SFP IP Base
WS-C3750V2-24PS-E	24 10/100 PoE + 2 SFP IP Services
WS-C3750V2-48PS-S	48 10/100 PoE + 4 SFP IP Base
WS-C3750V2-48PS-E	48 10/100 PoE + 4 SFP IP Services

For More Information

<http://www.cisco.com/en/US/products/hw/switches/ps5023/index.html>