

Empowering Your Mobile Workforce With Freedom & Security

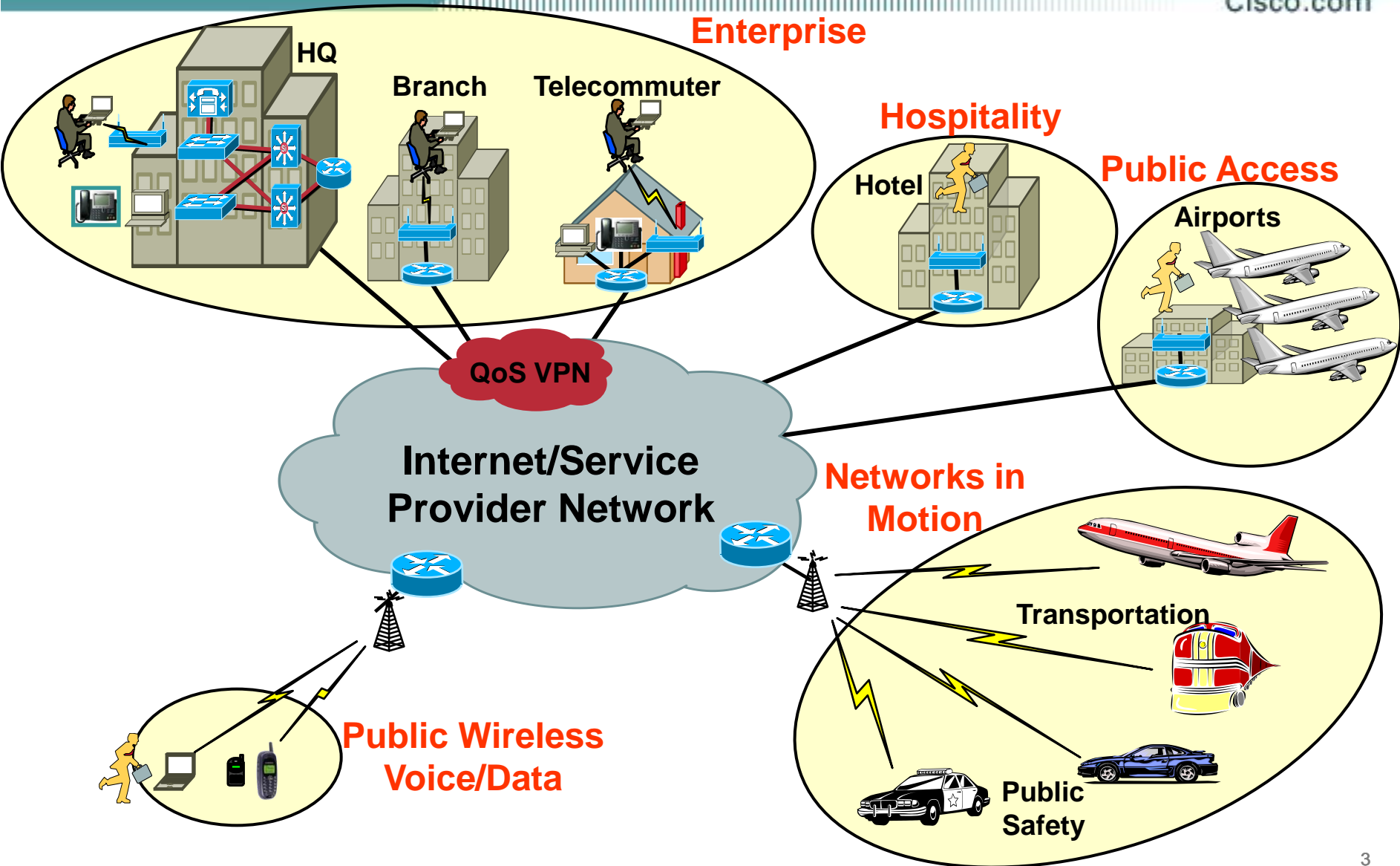


- **The Mobility Vision**
- **Business Case for Users on the Move**
- **Enterprise User in Motion Solution**
- **The Technology**
- **Summary**

Today's Enterprise Workplace

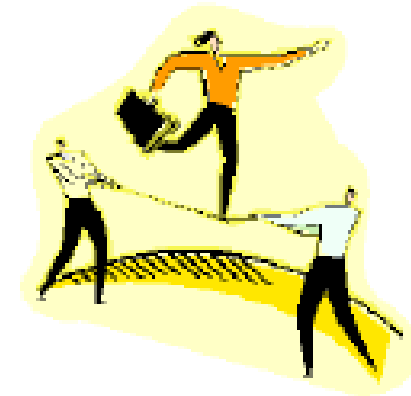
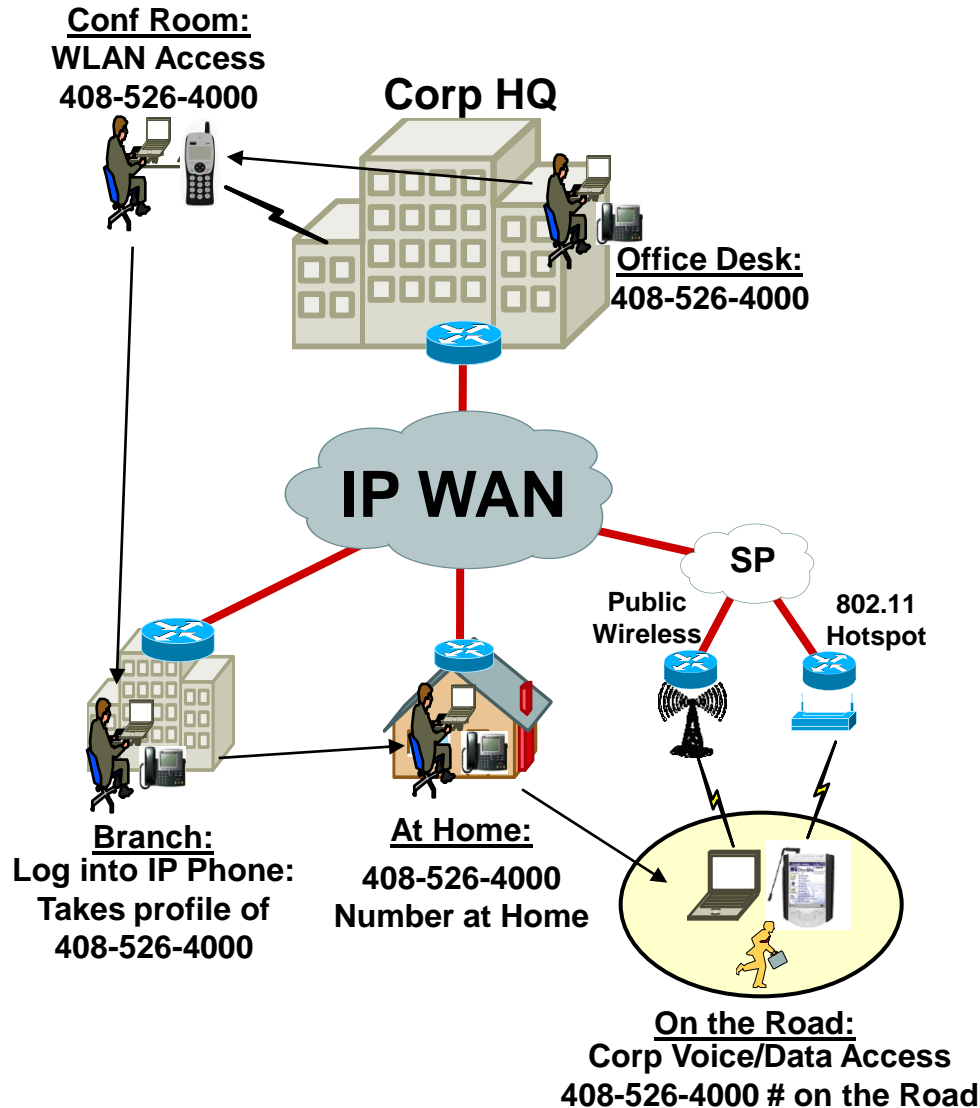
Highly Distributed/Mobile Workforce

CISCO.com



Connectivity Everywhere

The Experience



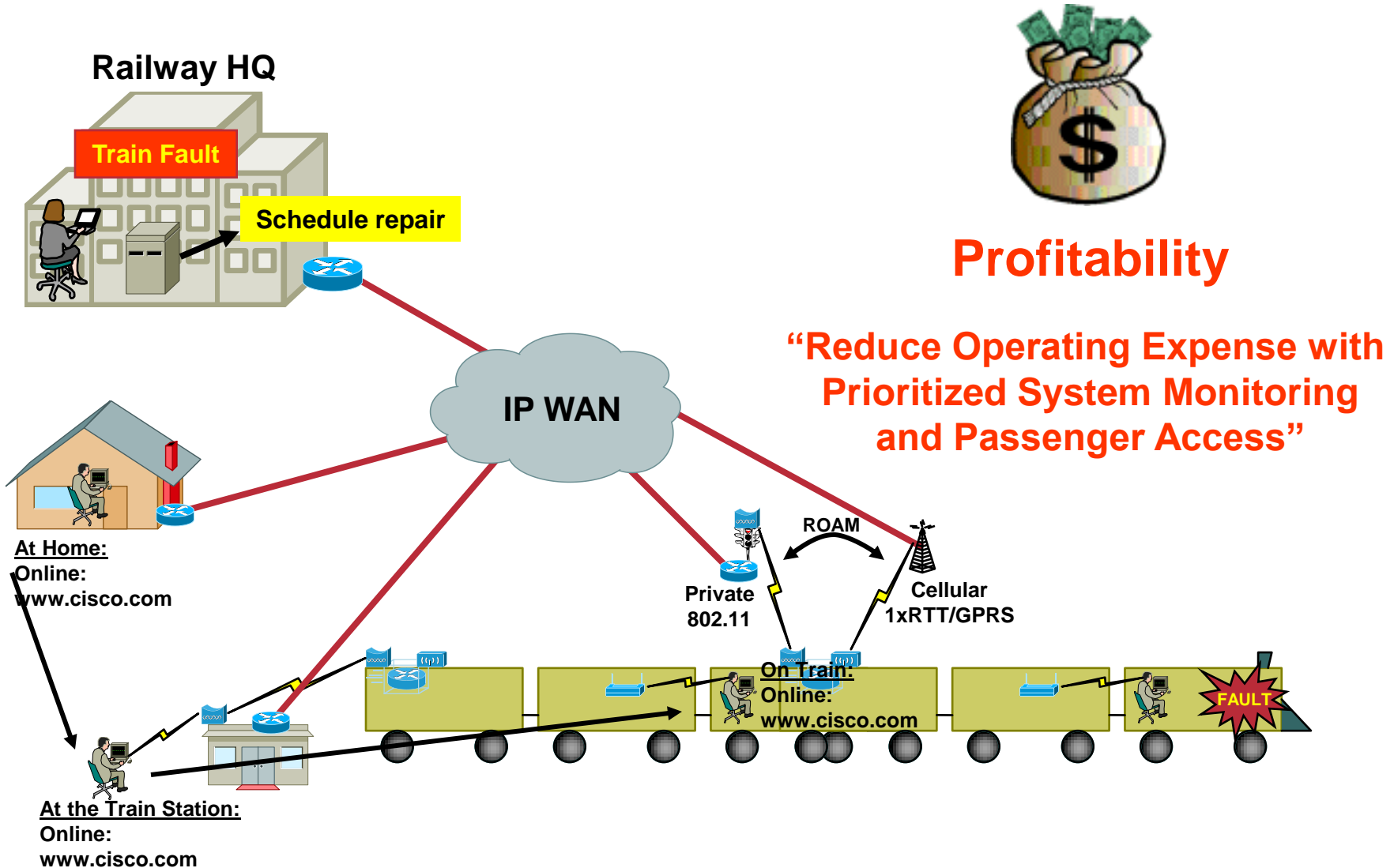
Productive

***“Ensuring Application Access
Anywhere you go”***

Increasing Profits Through Productivity

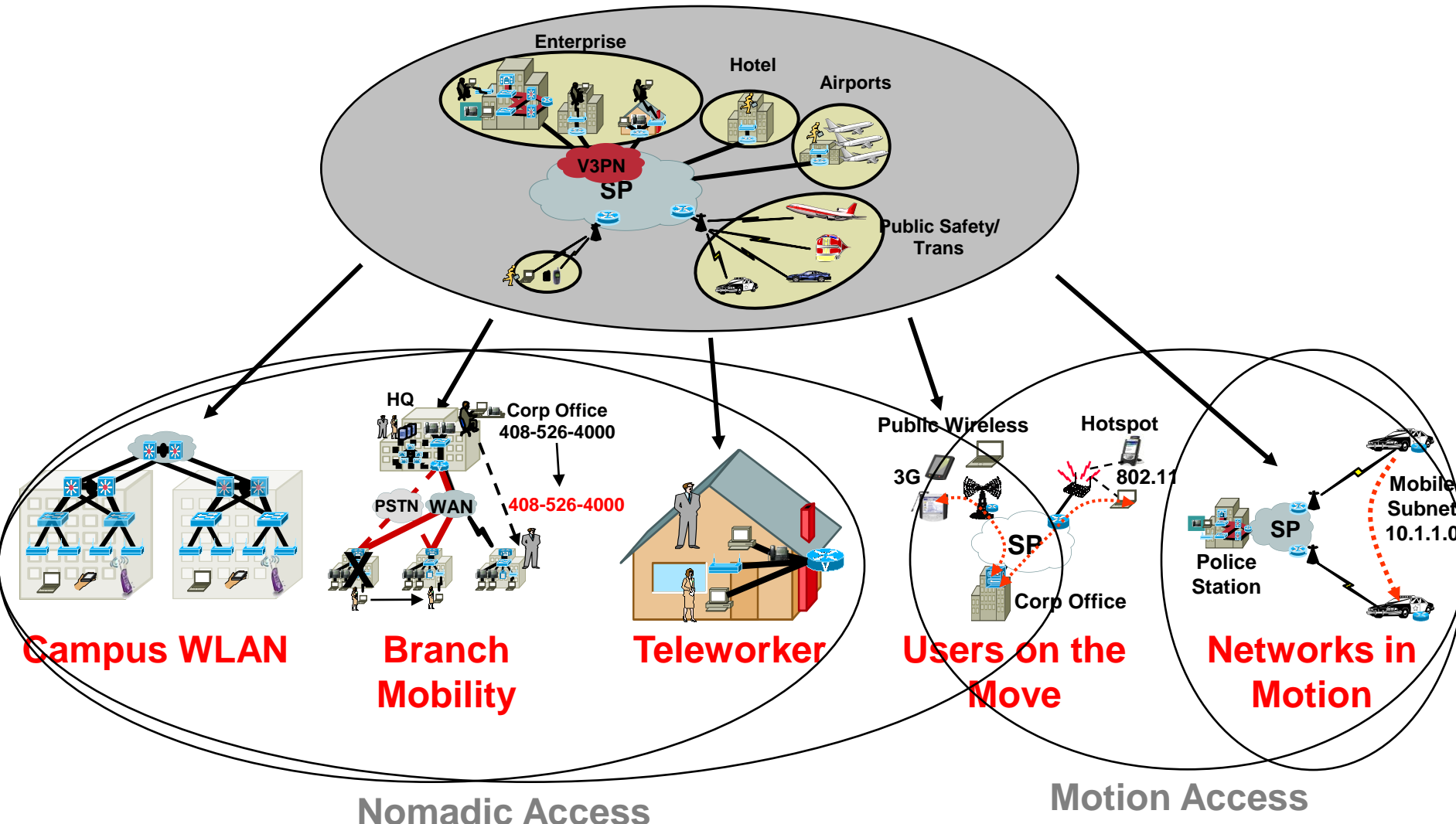
The Cost Benefit

Cisco.com



Cisco Enterprise Mobility Vision

Increasing Workday Productivity



Agenda

- **Cisco's Enterprise Mobility Vision**
- **Business Case for Users on the Move**
- **Enterprise User in Motion Solution**
- **The Technology**
- **Summary**

Business Case for Users on the Move

Example: Enterprise

Cisco.com



What would you like
your employees doing?

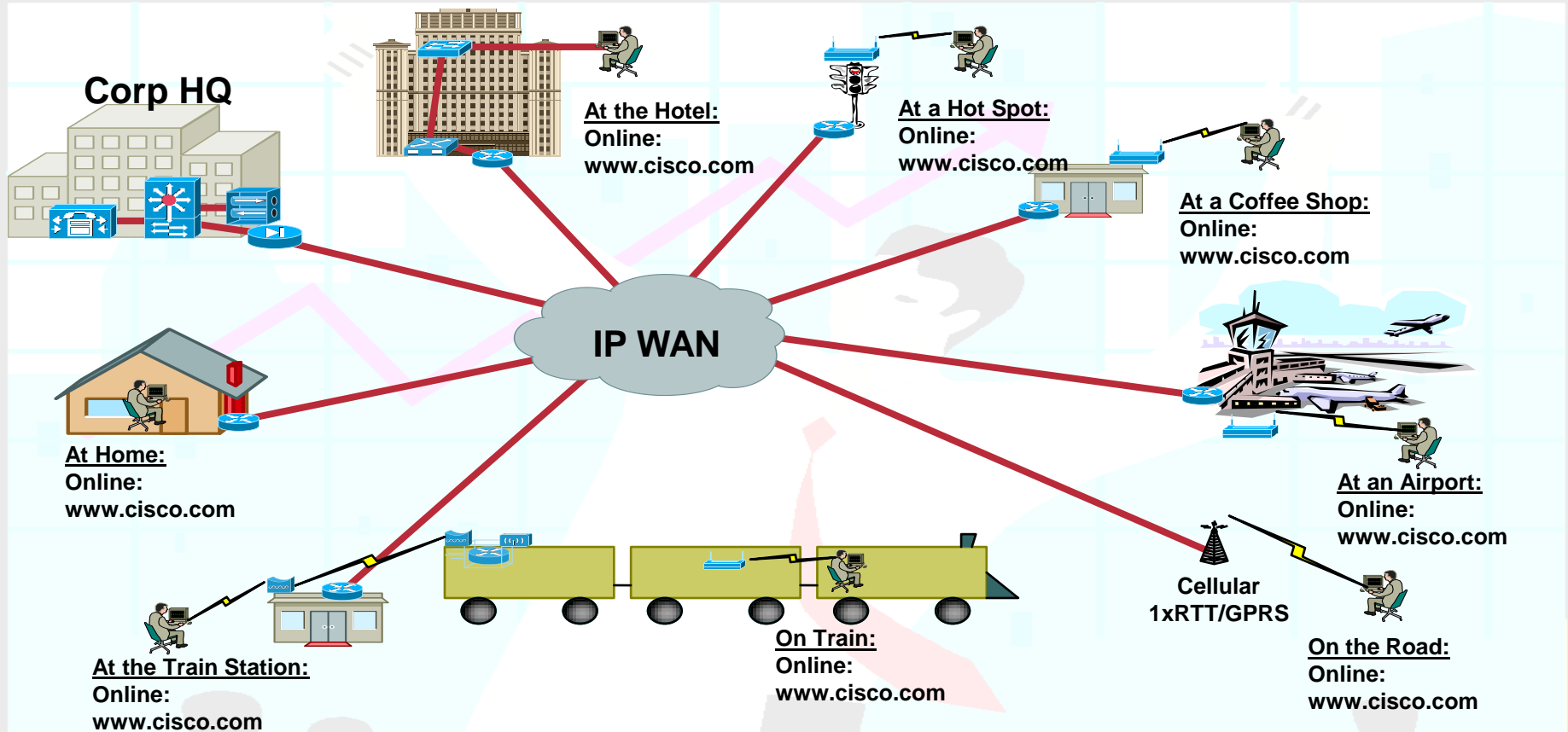


- Employee salary (inc. benefits): \$120,000/yr
- Airport, Hotel, Work/personal downtime per year = **increase ~2% of the employee's available time**
- Annual ROI: $\$120,000 \times 2\% = \$2,400/\text{yr per employee}$
- Add the commuter...**25% additional** employee time (>\$30,000) not before available
- What is the value of a more effective work force?

Business Case for Users on the Move

Example: Enterprise

Cisco.com

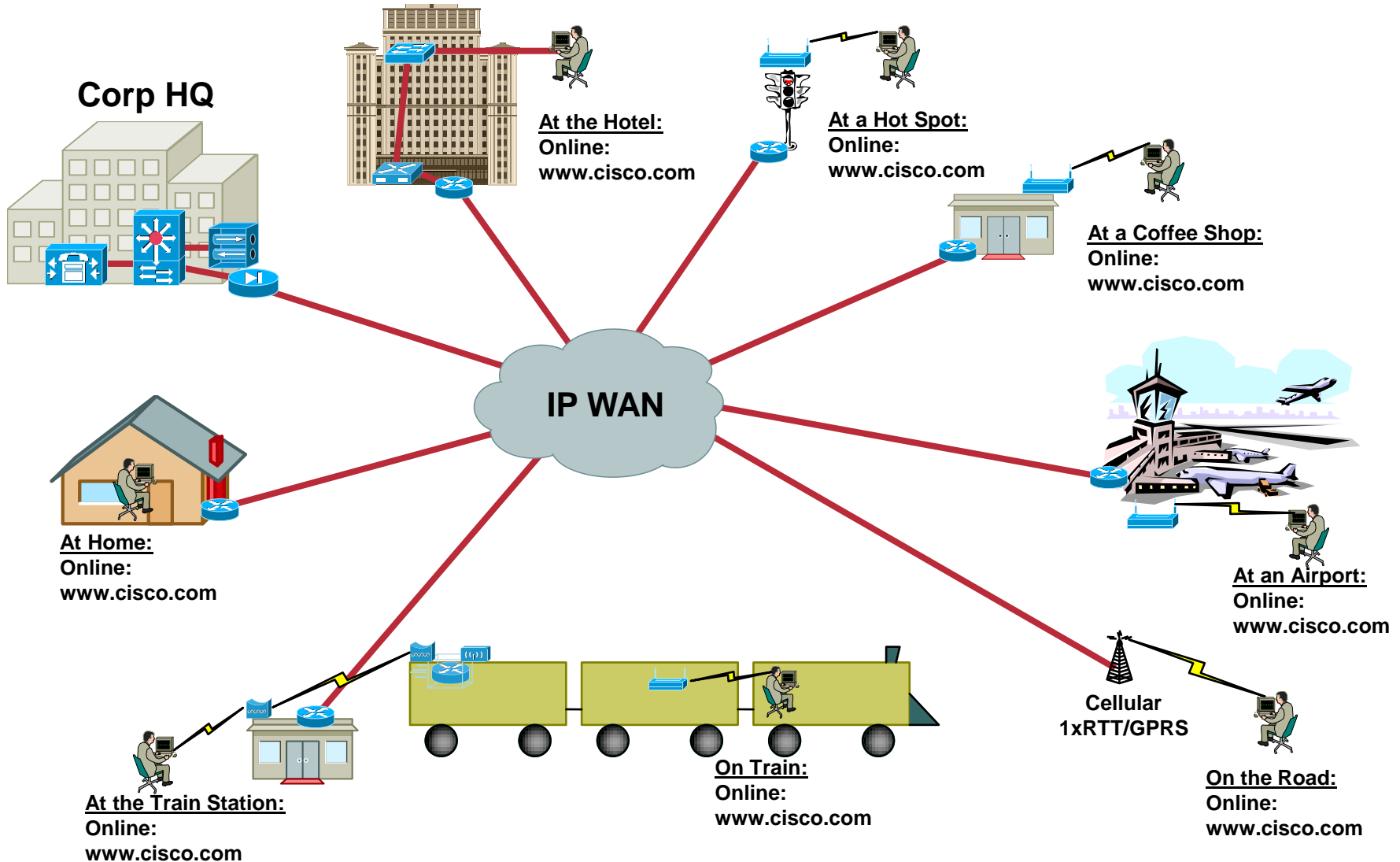


- Can you keep your mobile employees connected to the network when they are on the move?

Agenda

- **Cisco's Enterprise Mobility Vision**
- **Business Case for Users on the Move**
- **Enterprise User in Motion Solution**
- **The Technology**
- **Summary**

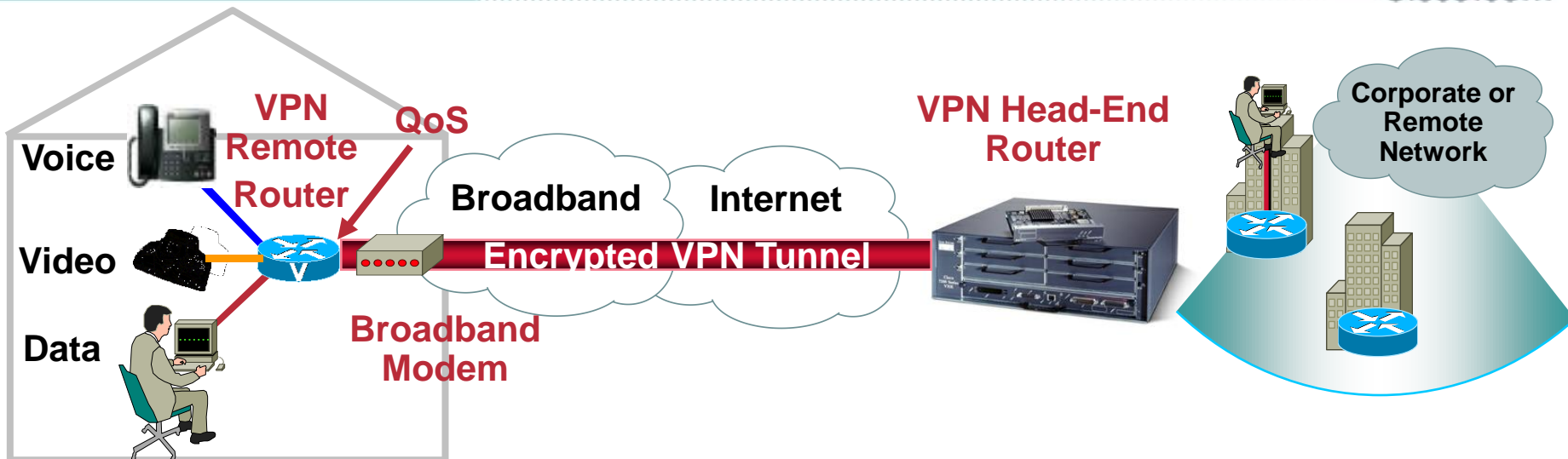
Access Wherever You Go



Next Generation is Here

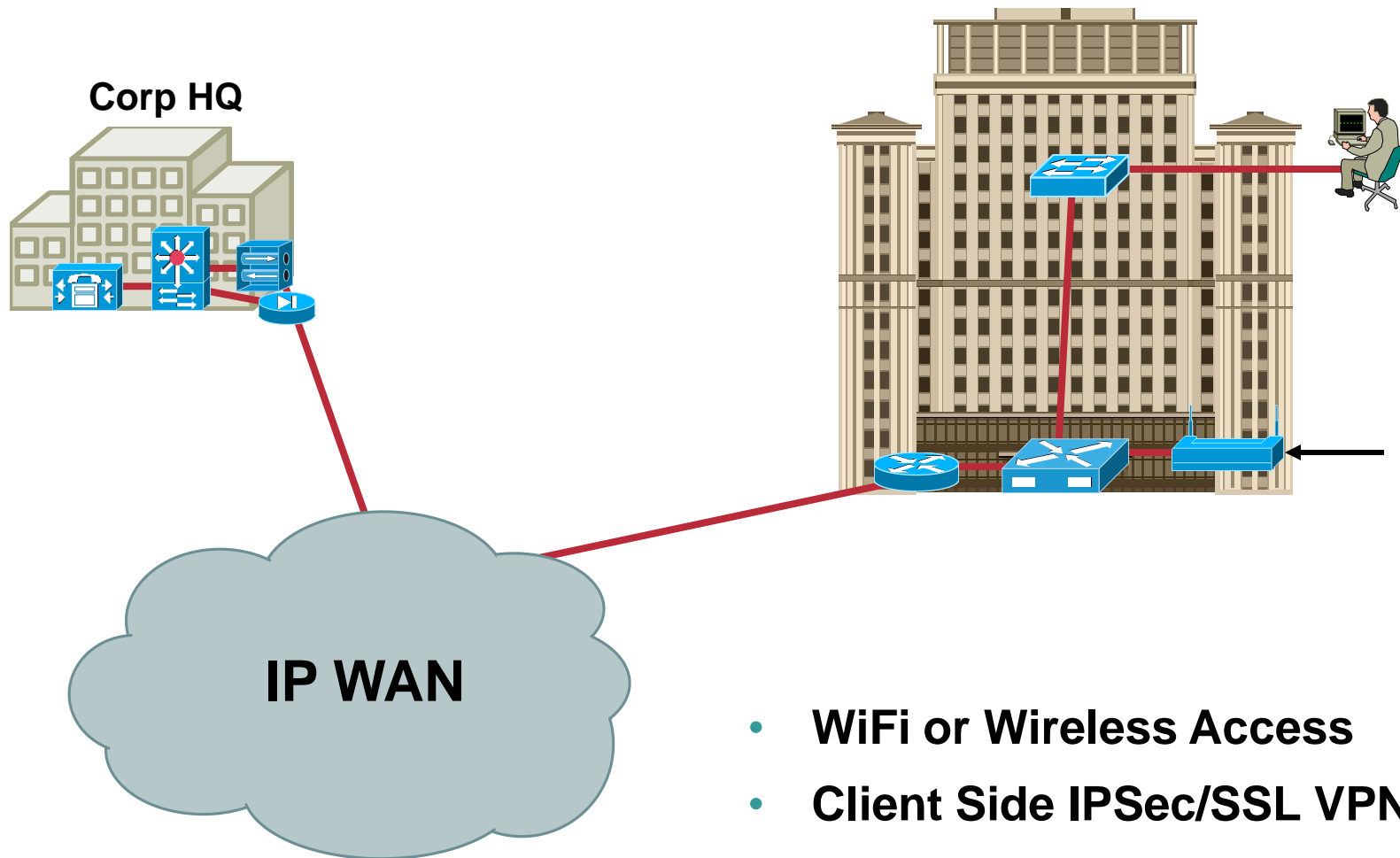
Enterprise Class Teleworker

CISCO.com



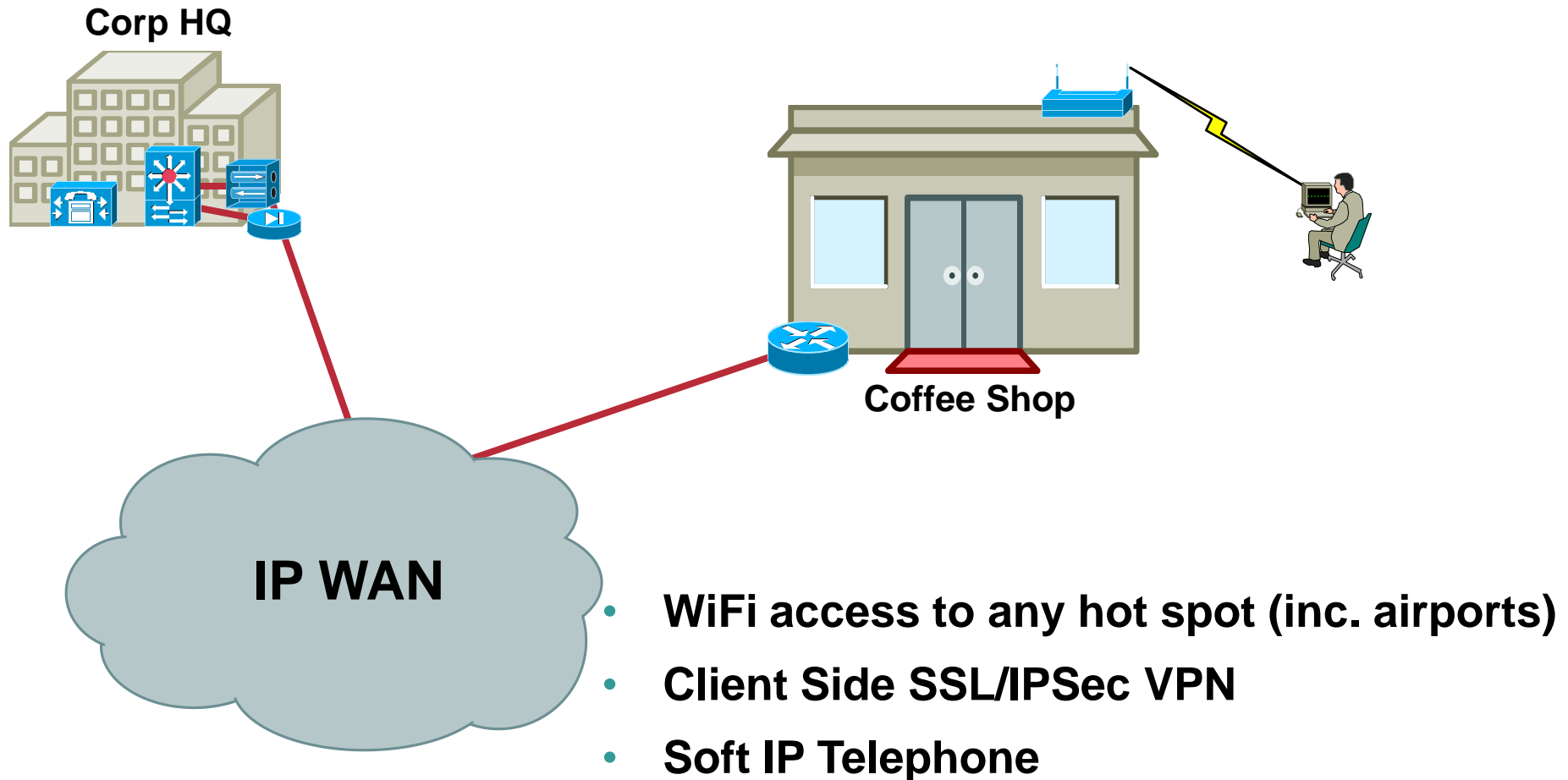
- **Broadband enables office applications**
- **Site-to-Site “always on” VPN connection**
- **QoS for application and bandwidth management**
- **Advanced security extends corporate LAN to home office**
- **Support full range of converged desktop applications, including voice, video, and real-time collaboration tools**
- ***Teleworkers have same services at Home as in the office***

User Access – Hotel



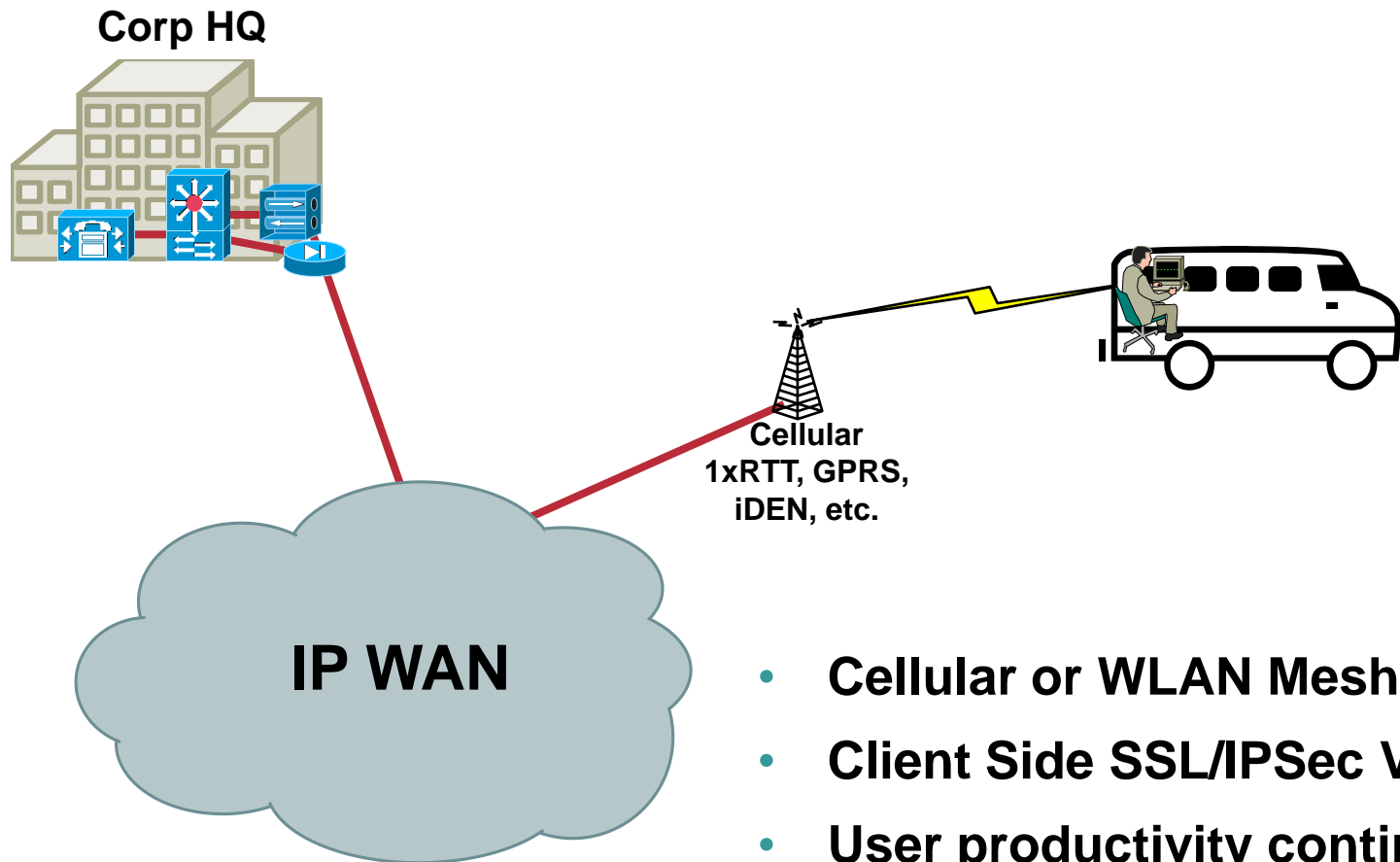
- WiFi or Wireless Access
- Client Side IPSec/SSL VPN
- Soft IP Telephone

User Access – Hot Spot



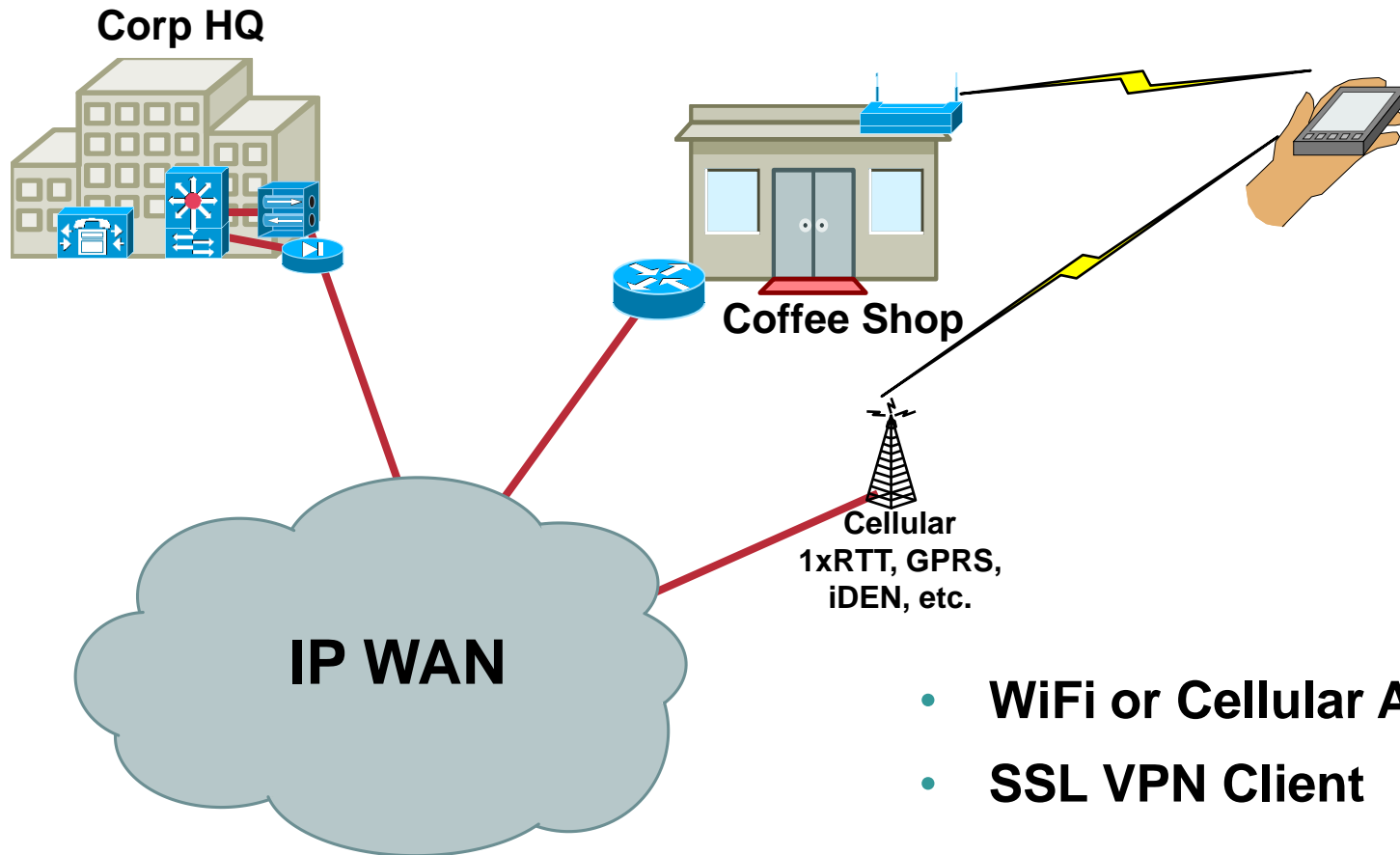
User Access – In Motion

Cisco.com



- Cellular or WLAN Mesh Access
- Client Side SSL/IPSec VPN Client
- User productivity continues even in motion

User Access – PDA

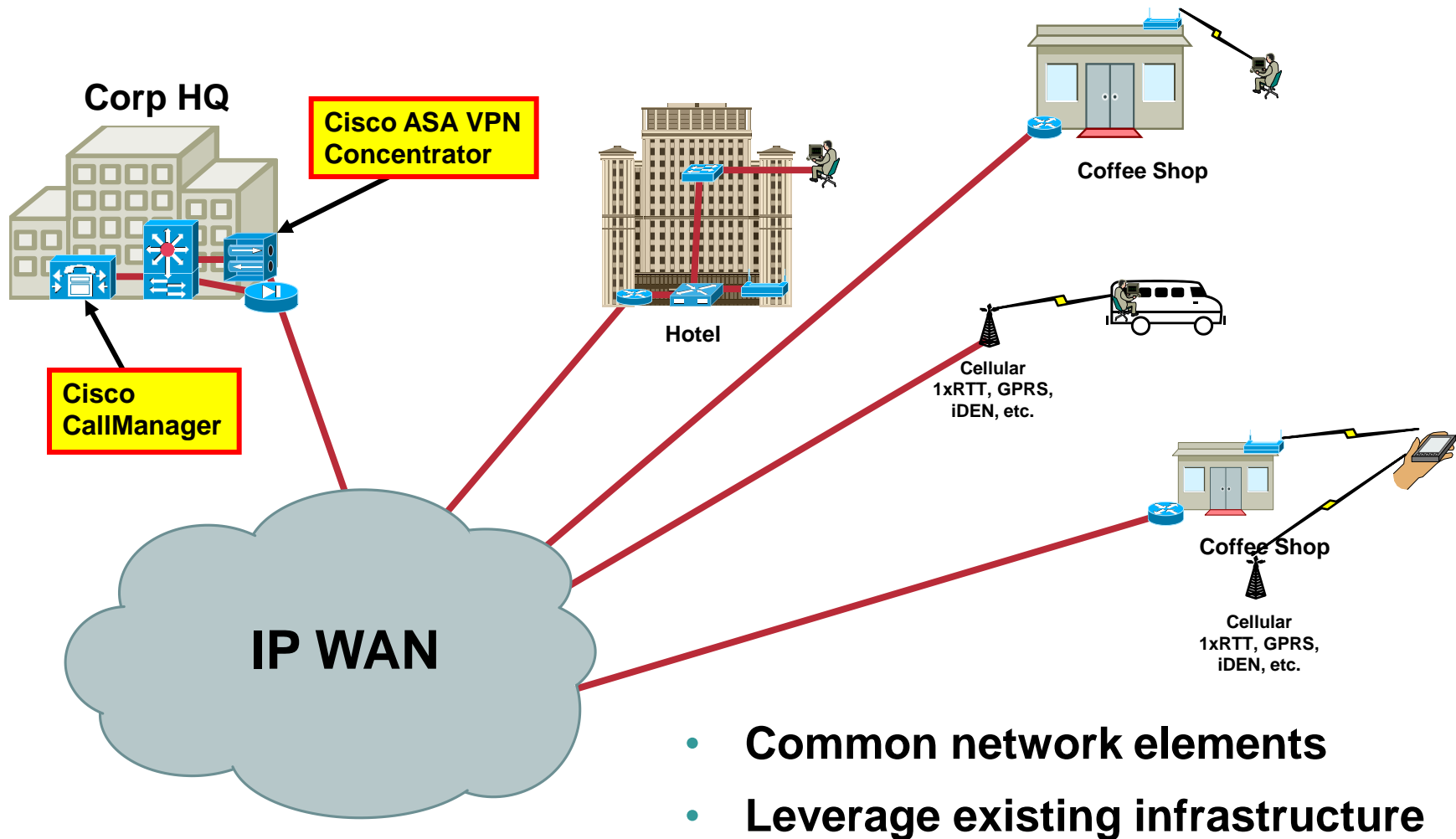


- WiFi or Cellular Access
- SSL VPN Client

Agenda

- **Cisco's Enterprise Mobility Vision**
- **Business Case for Users on the Move**
- **Enterprise User in Motion Solution**
- **The Technology**
- **Summary**

Users on the Move – General Design



- Common network elements
- Leverage existing infrastructure

Secure Connectivity Everywhere

Extending the Self-Defending Network

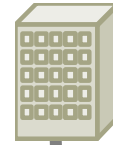
Cisco.com



Client-based SSL or IPsec VPN

Mobile Workers

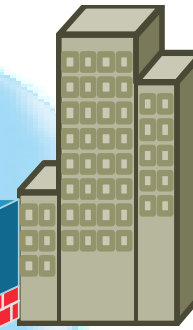
Easy access to corporate network resources



Partners / Consultants

Controlled access to specific resources and applications

Clientless SSL VPN



Public Internet

ASA 5500

Clientless SSL VPN



Roamers

Seamless access to applications from unmanaged endpoints

Client-based SSL or IPsec VPN



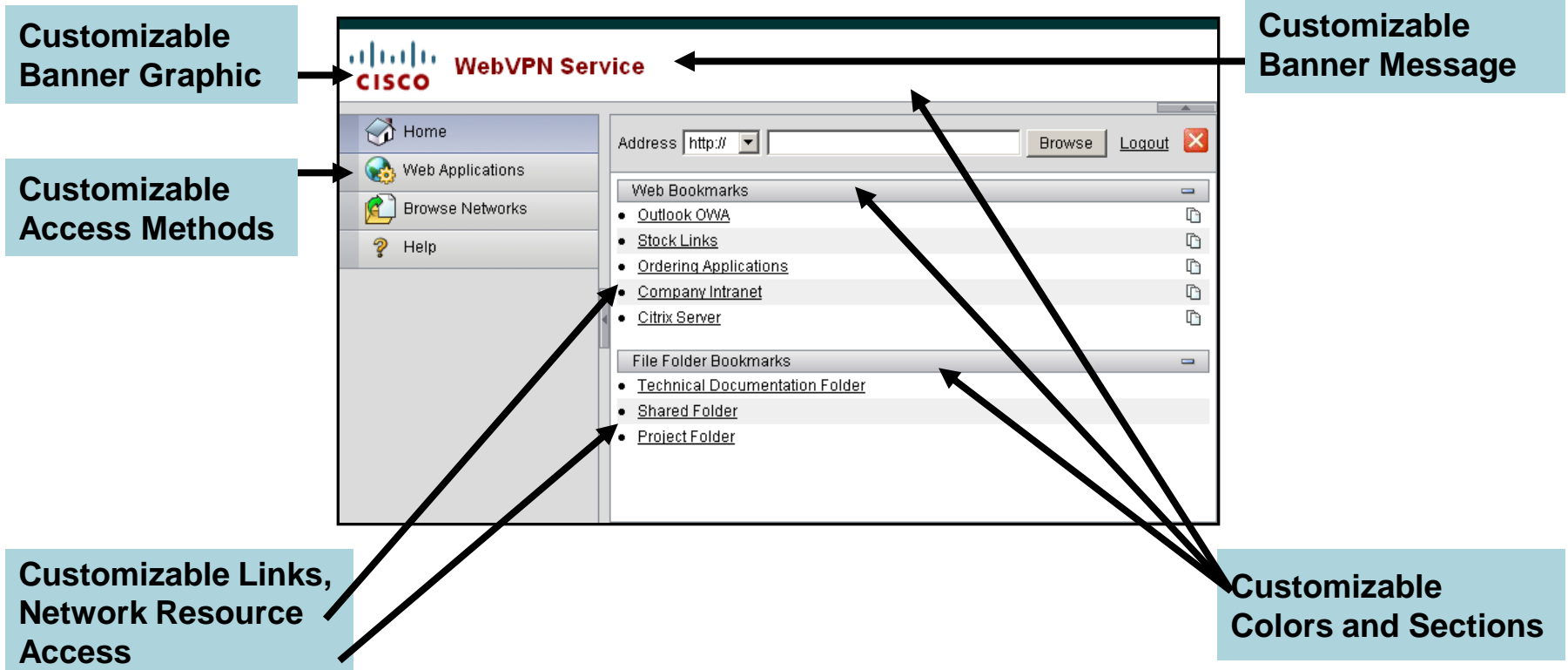
Day Extenders / Home Office

Day extenders and mobile employees require consistent LAN-like, full-network access, to corporate resources and applications

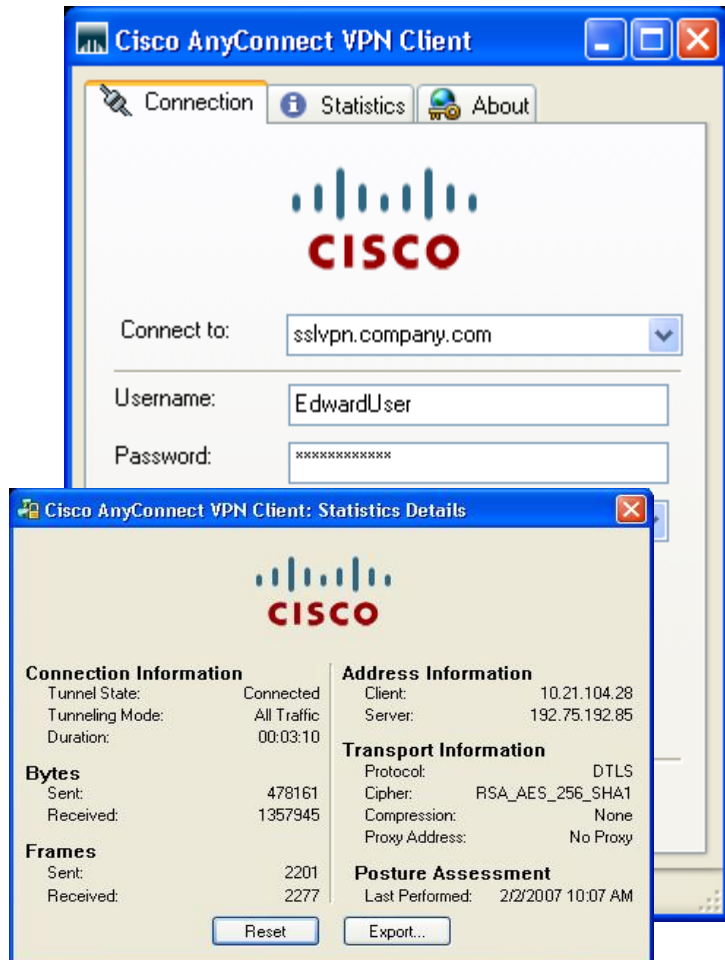
SSL Clientless Portal

Enhanced clientless interface, highly customizable

Cisco.com



IPSec or SSL/VPN Tunneling



Extends the in-office experience

Full Application Support

Wide Platform Support

Windows ,Mac OS, Linux Intel, Windows Mobile

No-hassle Connections

No reboots required

Stand-alone, Web Launch, Portal Connection

Start Before Login (2K/XP)

MSI – Windows Pre-installation package

Enterprise Class Teleworker

Business VLAN



- Secure access to both Home and Internet VLANs
- Power Over Ethernet for IP Phones and WiFi Access Points



Internet VLAN



- DHCP and Dynamic DNS services
- PPPoE support
- Backup ISP support (Security Plus)

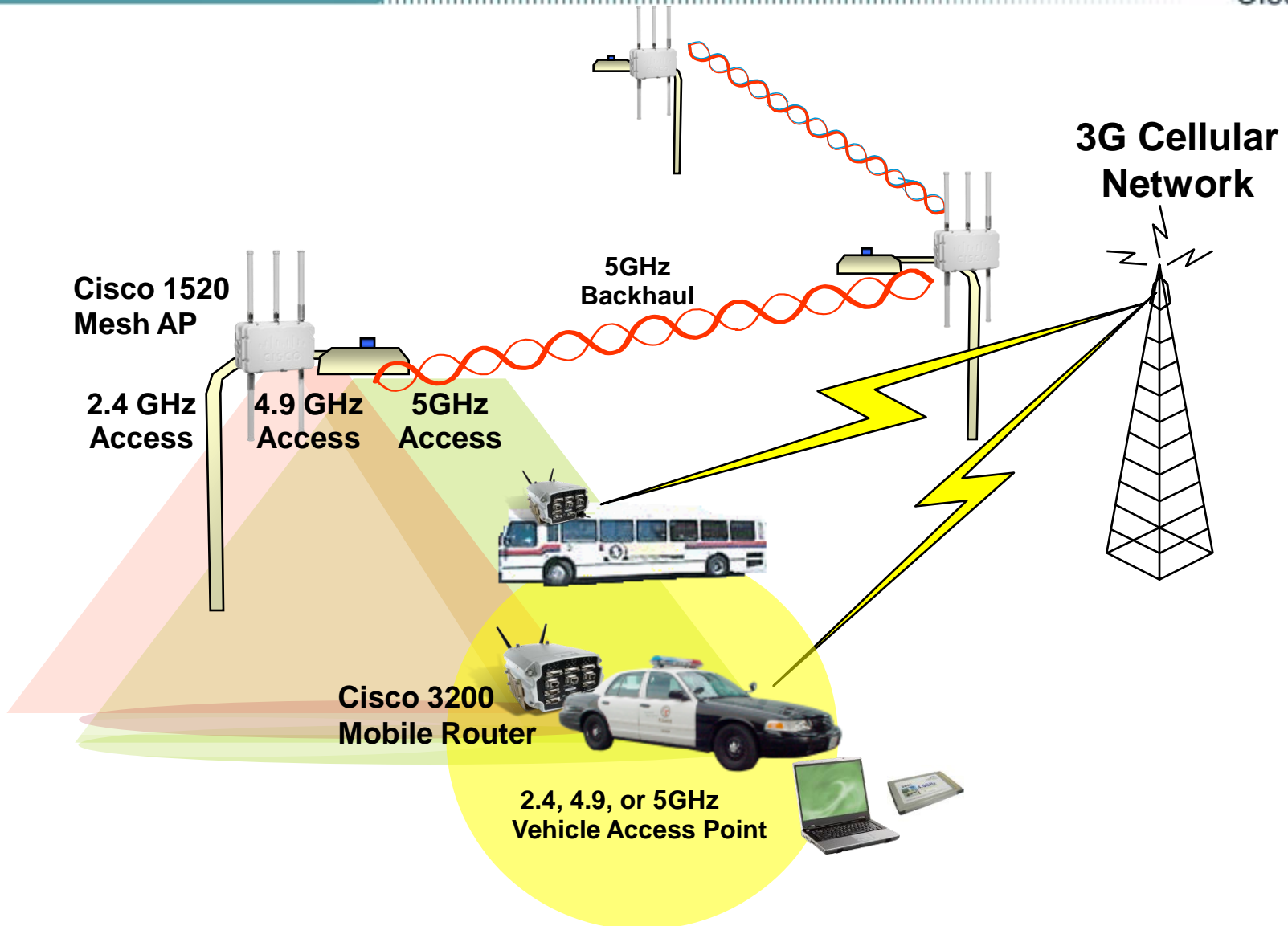


Home VLAN

- Secure access for a wide range of applications through the Internet VLAN
- DHCP Server Services



Wireless Mesh Access to Vehicle Network



IP Telephony – IP Communications

CISCO.COM

- **Standards-based communications for voice, video, data, and collaboration**
- **Significant return on investment:**
 - **Productivity**
 - **Resiliency**
 - **Collaboration**
 - **Mobility**
- **Comprehensive applications**
- **Cisco services and support**



Agenda

- **Cisco's Enterprise Mobility Vision**
- **Business Case for Users on the Move**
- **Enterprise User in Motion Solution**
- **The Technology**
- **Summary**

Summary

- **Productivity** follows the employee
- **Secure network access**
- **Standards based products (IPSec, IP Telephony)**
- **Leverage existing infrastructure**

