

Facilitating Teaching and Learning through e-Learning

Ravi Chandran
Centre for Instructional Technology
National University of Singapore

- **Founded in 1905, Government-funded**
- **14 faculties and schools**
- **31 national and university-level research centres and institutes**
- **24,092 undergraduates and 7,173 graduate students**
- **1,944 faculty members and 1,464 research staff**
- **3,622 administrative & professional staff**



- 50 Bachelor's degree programmes
- 138 Master's and Doctoral degree, and Graduate Diploma programmes
- Double Degree, Joint Degree and Concurrent Degree programmes
- Broad-based curriculum focusing on multi-disciplinary, global education
- 7 halls of residence on campus for 6,000 students
- 3 campuses with 1 under construction (University Town)



- **Duke University** in the **Duke-NUS Graduate Medical School Singapore**
- **Eindhoven University of Technology** in the **Centre for Design Technology**
- **Georgia Institute of Technology** in **The Logistics Institute-Asia Pacific**
- **John F Kennedy School of Government, Harvard University**, in the **Lee Kuan Yew School of Public Policy**
- **Massachusetts Institute of Technology** in the **Singapore-MIT Alliance**
- **Peabody Institute, Johns Hopkins University**, in the **Yong Siew Toh Conservatory of Music**





Association of Pacific Rim Universities (APRU)

A trans-Pacific consortium of 36 leading research universities from 16 economies (<http://www.apru.org>)



Shanghai, Seoul, S'pore University Alliance (S³UA)

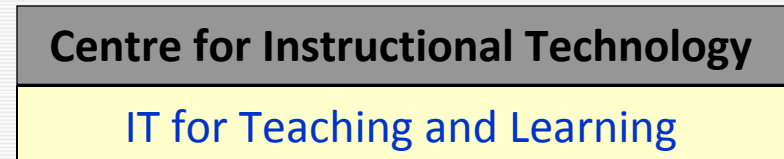
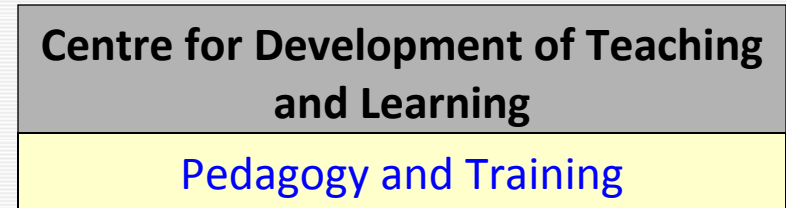
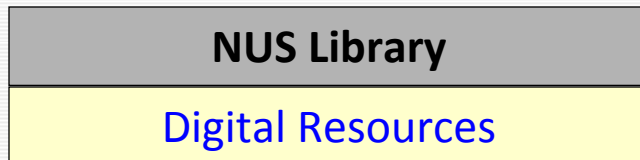
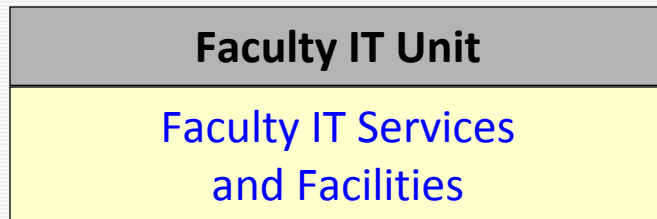
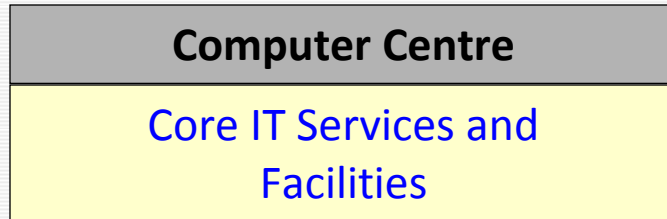
A partnership between NUS, Korea University and Fudan University to jointly conduct globally-oriented education and research programmes, with a significant focus on Asia



Universitas 21 (U21)

U21 is an international network of research-intensive universities that aims to facilitate collaboration and cooperation between the member universities and to create entrepreneurial opportunities for them

more focus and accelerated pace



- Governance, Policy and Planning
- Network Infrastructure and Services
- Operations and Data Centre
- Academic Computing
- Administrative Information Systems
- Desktop Computing, User Support Services, Helpdesk
- Enterprise Infrastructure and Services, Identity Management
- IT Security
- Research Computing and High-Performance Computing
- Student Computing
- Telephony
- Web Support Services

This story was printed from CNET Asia.

NUS notebook deals 2008/2009

By Darius Chang

Jul 28, 2008

URL: <http://asia.cnet.com/reviews/notebooks/0,39050495,62044220,00.htm>

Introduction

Students at the National University of Singapore (NUS) have the largest selection of notebooks for the campus purchase program, with vendors from such as Acer, Lenovo and NEC offering laptops at heavily discounted prices.

If you purchase any laptop under this program, the machine will be configured with the following software free:

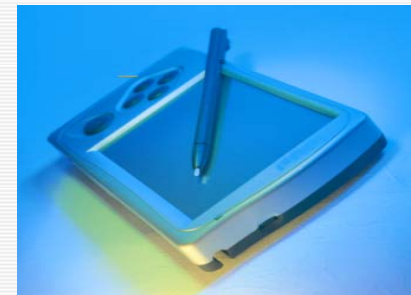
- Windows XP Professional or Vista operating system
- Adobe Creative Suite 3 Web Premium
- Adobe Acrobat Reader
- NUS Windows Shopping
- NUS Dialup

If you already own a laptop, then you may have all the above system installed in your notebook except for the Windows XP/Vista and Macromedia Webtools 8 programs.

Another advantage of this campus purchase program is that all units will be given at least a three-year on-campus warranty, with some brands even offering international coverage as well.



- Campus-wide coverage for both Kent Ridge and Bukit Timah Campus
- Wireless broadband speed at 54 Mbps (IEEE 802.11 b/g)
- Over 1,000 wireless base stations and hotspots
- Implementation of LEAP for enhanced security
- Wireless roaming among institutes of higher education

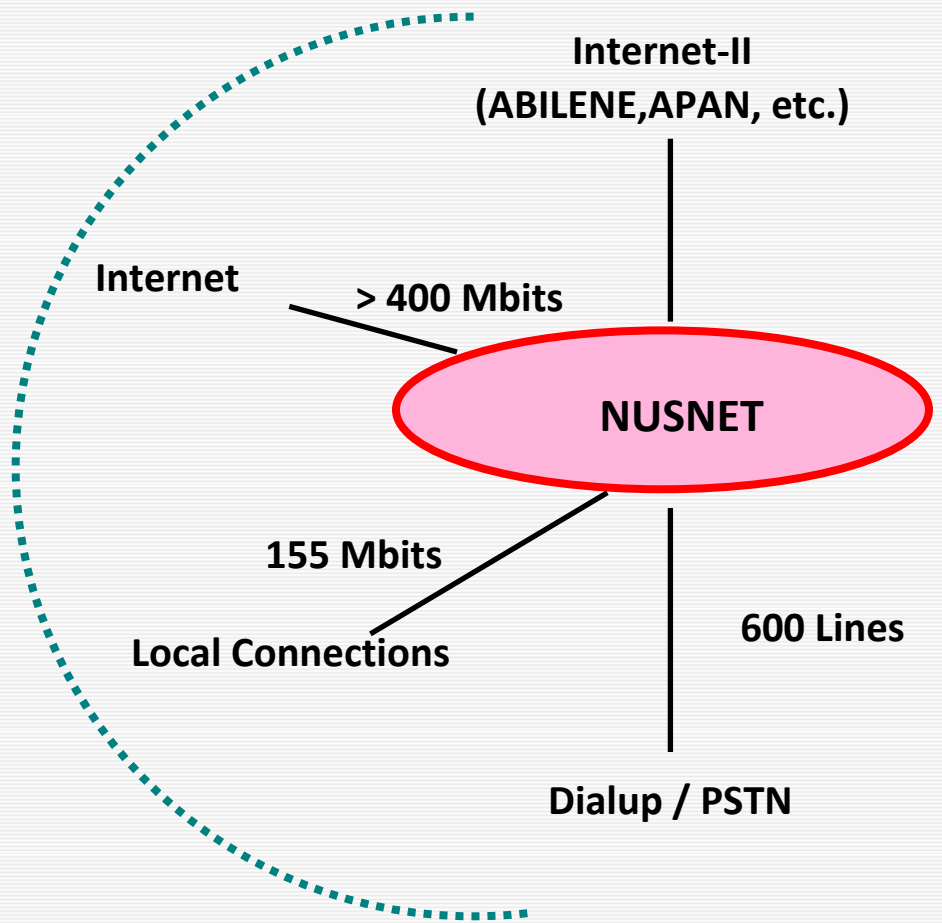


Outside Campus

- Cable Modem
- ADSL
- ISDN Dialup
- Analog Dialup
- Wireless GSM/GPRS
- Internet Roaming GRIC/IPASS

On Campus

- Computer Clusters @ 100 Mbits
- Secured PnP @ 100 Mbits
- Wireless PnP @ 54 Mbits



Matriculation/Registration

Student Administration

Recruitment & Admissions

Curriculum Planning

Commencement



student particulars
student photos
access records to facilities
clinical records
ECA records

modules enrolled
grades & credits
emails
billing records
bonus points for wellness programme

online community
submitted work assignments
financial aids
blogs
class timetables
bonus points for wellness programme

book titles on loan
industry attachments

alumni particulars
theses
transcripts
Feedbacks on teaching

Centre for Development of Teaching and Learning

Research on learning practices,
philosophy & pedagogical theory;

Formulation of policies in matters
such as teacher appraisal, peer
review, selecting outstanding
educators, and student assessment;

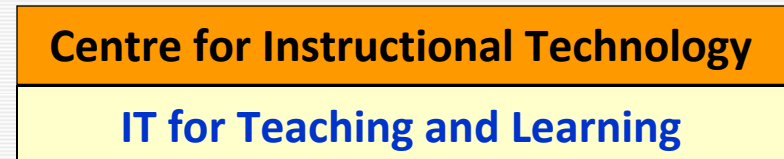
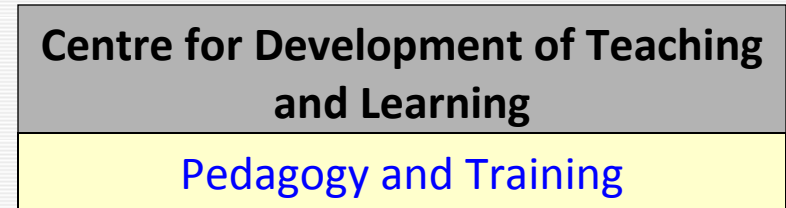
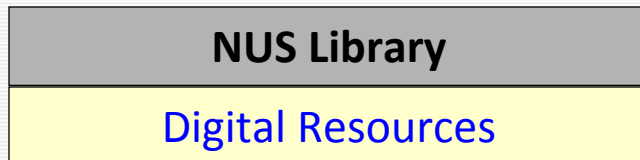
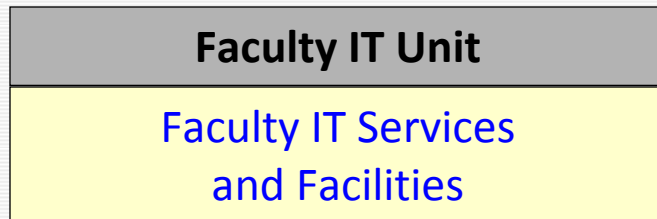
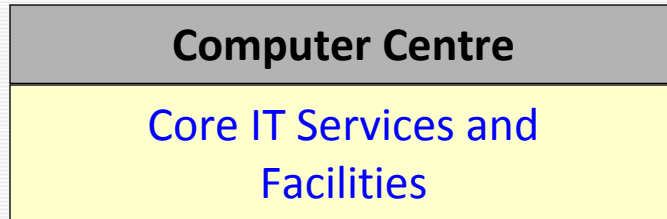
Developing and implementing teacher
learning programmes

Exploring and promoting pedagogical
sound applications of instructional
technology in collaboration with CIT



www.cdtl.nus.edu.sg

more focus and accelerated pace



Lectures

oral, written, narrative videos, drill and practise, discussions, demonstrations

Skills Based

role-playing, games, modeling, simulations, assessments, CAI

Individual vs. Group

self study, jigsaw learning, group discussion, brain-storming, cooperative learning, CAI

Inquiry Based

case studies, problem based learning, projects, reflective discussion

Students value face-to-face instruction – year after year. ICT should not replace or overshadow the real benefits of classroom interactions.

ECAR Study of Undergraduate Students and Information Technology, 2008



- Constant changes in educational technology, curriculum changes and student expectations requires an evolutionary approach in selecting technologies for teaching and learning
- Experimentation is needed on what works for teaching and learning – *trial and error*
- Students still want limited amount of technology in their course – *technologies that make them more productive in what they are already doing*
- Limited ROIs when investing in education technology
- There is also a need for IHLs to keep pace with educational technology trends for incoming students



- Importance and value of face-to-face teaching
- Technology as an **enabler** and **facilitator** to improve the teaching and learning processes
- Focus on technologies that help staff and students be more productive in what they can already do
- Focus on technologies that enhance student learning

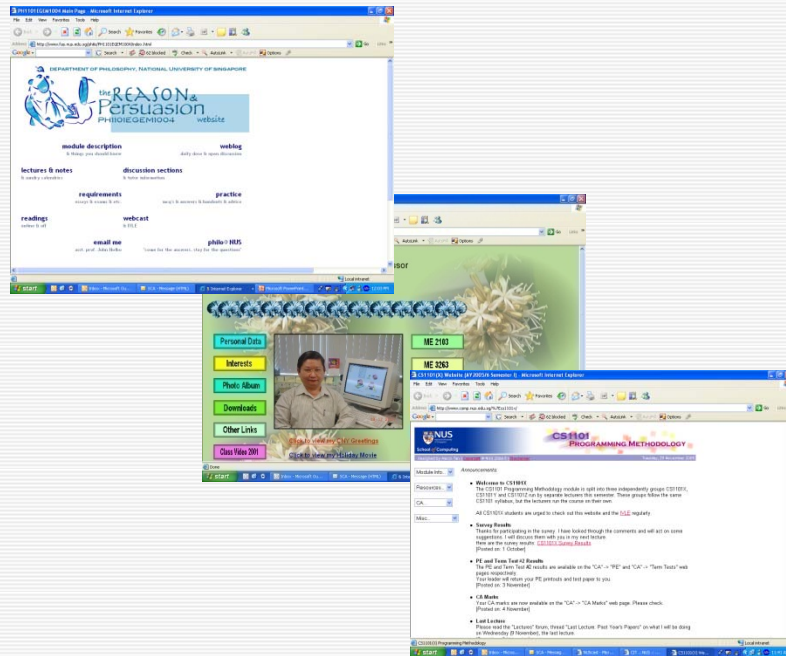
- **Encourages student-lecturer contact**
- **Encourages cooperation among students**
- **Encourages active learning**
- **Gives prompt feedback**
- **Emphasizes time on tasks**
- **Respects diverse talents and ways of learning**

NUS Educational Technology Platforms

Top-Down Support and Bottom-Up Drive

Course Websites

Course Management System



Centrally managed and tightly integrated
Consistent look and feel

Flexibility and Variety

IVLE Workspace

Webcast Lecture


What IVLE can do for you.

- Assessments (Quizzes)
- Assignment/Notes Exchange (Workbins)
- Communities
- Class Announcement with SMS
- Discussion Forums
- Chat Rooms
- Class Management and Class Roster
- Distribution Lists
- Grade Book
- Lesson Plans (Week-by-Week Schedule)
- Library e-Reserves and Resources
- Module FAQs
- Module Syllabus and Readings
- Multimedia and Video Support
- Organizer with Class Timetables
- Project Workspace and Peer Review
- Webcast and Podcast Lectures
- Surveys and Polls

Syllabus

ME2103 - Engineering Visualization & Modeling

Module created on 25 Mar 1999, updated on 09 Oct 2004

Module	ME2103 - Engineering Visualization & Modeling	
Semester	Semester 1, 2004/2005	
Department	Mechanical Engineering	
Teaching Staff	 ASSOC PROF LEE KIM SENG	mpeleeks@nus.edu.sg Lecturer

Websites: <http://courses.nus.edu.sg/course/mpeleeks/personal/index.htm> Home Page of Associate Professor Lee Kim Seng

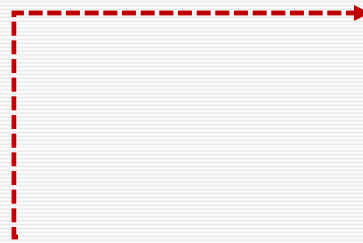
[Aims/Objectives](#) | [Prerequisites](#) | [Schedule](#) | [Synopsis](#) | [Syllabus](#) | [Practical Work](#) | [Assessment](#) | [Text & Readings](#)

AIMS & OBJECTIVES

The objective of this ME2103 module is to enable students to learn the various standards and techniques of geometrical sketching, preparing engineering drawings and specifications, and learn how to interpret drawings. Students also got to learn and use the advanced commercial 3D CAD software to do 3D solid modeling. Above all, this module aims to expand the students' creative talent and to communicate their ideas in a meaningful manner.

Major topics covered include: Principles of projections, Isometric and Auxiliary views, Interpenetration of solids and Development of surfaces, 3D solid modeling, Sectioning and Dimensioning, Machine and Assembly drawings, Drawing standards, Limits and Tolerances.

This is a core module for all Mechanical Engineering students and is also open to all cross-faculty students.



Supplemental

Module Syllabus
Web/SMS Notification
Workbin
Lesson Plans
Discussion Forums

Comprehensive

Module Syllabus
Web/SMS Notification
Workbin
Lesson Plans
Discussion Forums
Chat Rooms
Assessments & Surveys
Project Management
Webcast Lectures
Video Streaming

Administrative

Module Syllabus
Web/SMS Notification
Workbin



Caters to a mix of faculty

IVLE is integrated to ..



Admission

Admission
Course Bidding

Curriculum Planning

Course Particulars
Curriculum
Administration

Student Administration

Student Particulars
Timetabling
Exam Marks Administration
Class Rosters
Class & Tutorial Groupings

Others

Digital Library
Webcast Lectures
Podcast Lectures
Blogs
Communities

Web based with single sign-on
Focus on staff and students will follow

Student Workspace

**IVLE
Tools**

IVLE HOME USER ROLE | EMAIL | SEARCH | SUPPORT | LOG OUT ▲

Welcome Cit Temp Account Ctt0001 Student Workspace

Workspace Tools Personal Resource Banks Communities NUS Libraries

CONSULTATION
GRADEBOOK
GROUPS
TOOLS LIST

CONTACTS
Friends Messages
Today's Messages
No Message

MY ORGANIZER
07/08, SP Term II, Wk 3
July 2008

S	M	T	W	T	F	S
29	30	1	2	3	4	5
6	7	8	9	10	11	12
13	14	15	16	17	18	19
20	21	22	23	24	25	26
27	28	29	30	31	1	2
3	4	5	6	7	8	9

1. To: All Full-Time Graduate and Non-Graduating Students
With effect from 1st July 2008, the University Health, Wellness and Counselling Centre (UHCW) will be managing the new NUS Group Medical Insurance Scheme (GMIS). All full-time Graduate and Non-Graduating students are required to subscribe to the new Scheme. Please check your email for further information. Queries may be directed to: uhwc_health@nus.edu.sg or nus@mycg.com.sg. Thank you.

2. User Role: Please click on the User Role function at the top of this page if you are a student with manager access to certain modules.

Modules | Bookmarks | Communities

2007/2008, Special Term II Refresh What's New

Your Registered Modules

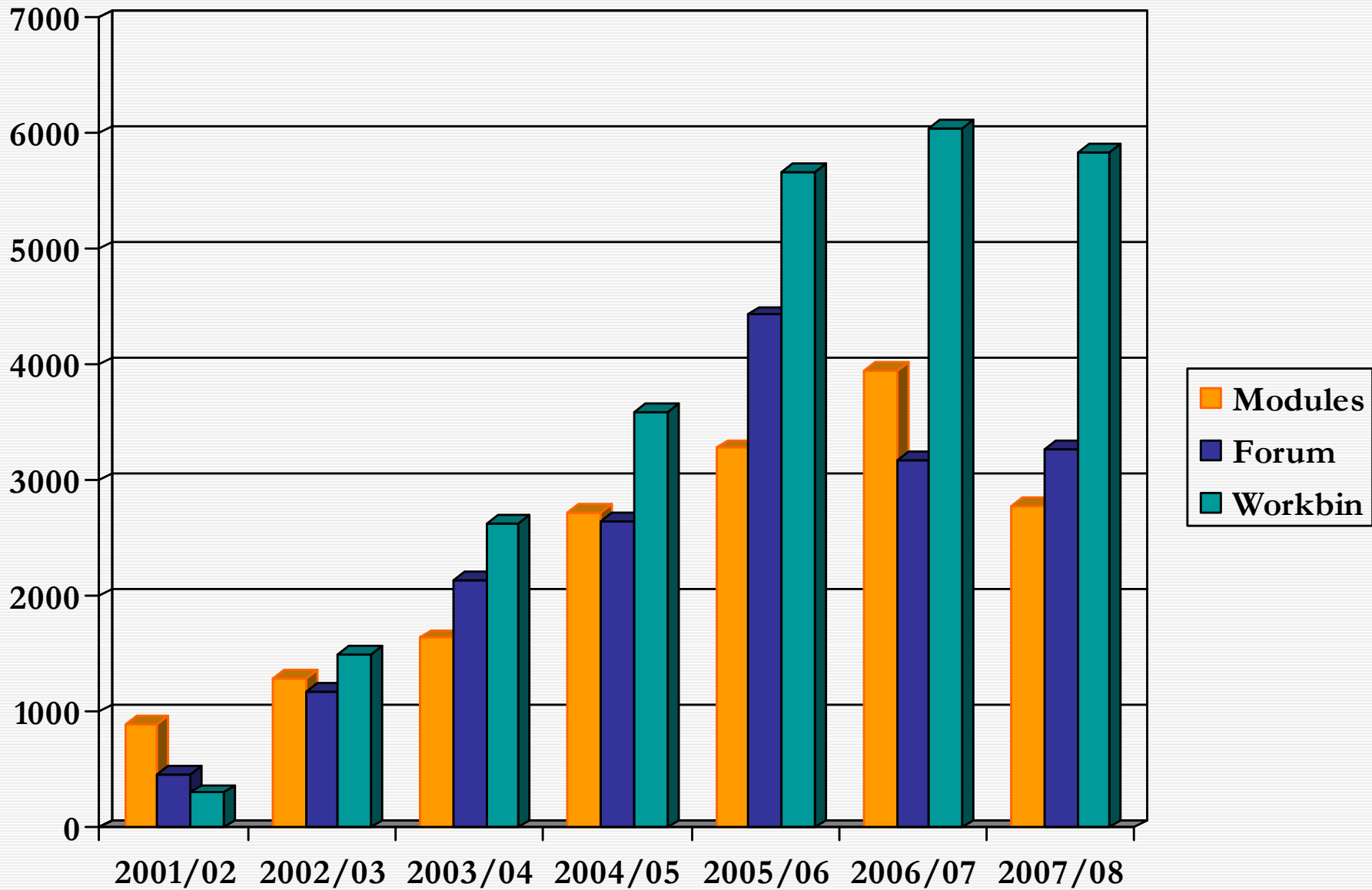
- CITBBs Samples RSS
- Announcement (2)
- Assessment Testing Assessment
- Assessment Testing test assessment
- Chat Room Samples
- Lesson Plan Samples
- Poll Test Poll
- Survey testing Survey
- OTH112 Induction Module RSS
- Announcement (1)
- Assessment Induction Module
- Assessment Induction Module Replicate 2
- Assessment Induction Module Replicate 3
- Forum i acc deleted ur org OTH112
- Library : Resources test
- Module FAQ
- Weblinks
- Workbin Induction Module - Imc
- OTH112 Copy_Of_Induction Module RSS
- Announcement (1)
- Module FAQ
- Weblinks

CAREER DEVELOPMENT
NUS Career Centre
Career Dev. Courses
SERVICES
Module Blogs
Webcast Lectures
Software Catalogue
EMODULES
Academic Culture
IT Security
LIBRARY
LINUS Blog
OTHERS
IVLE Feedback Forum
NUSSU HOOKED
Used Textbook Forum
Radio Pulze

STUDENT EVENTS
Singapore...
Transit Stopover
or Final
Destination...

NUS Calendar of Events

Local intranet 100%





**Computer Centre
Primary Data Centre**



Primary

**Database Cluster
Storage Area Network**
Redundancy and High Availability
600GB



Secondary



**NUS High School
Secondary Data Centre**



Clients

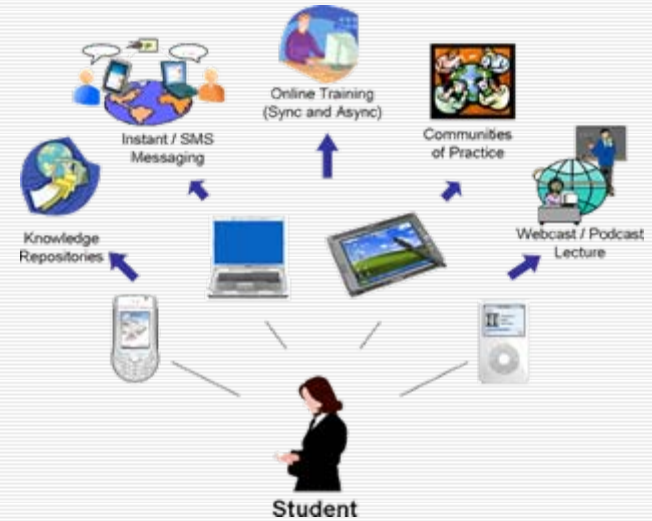
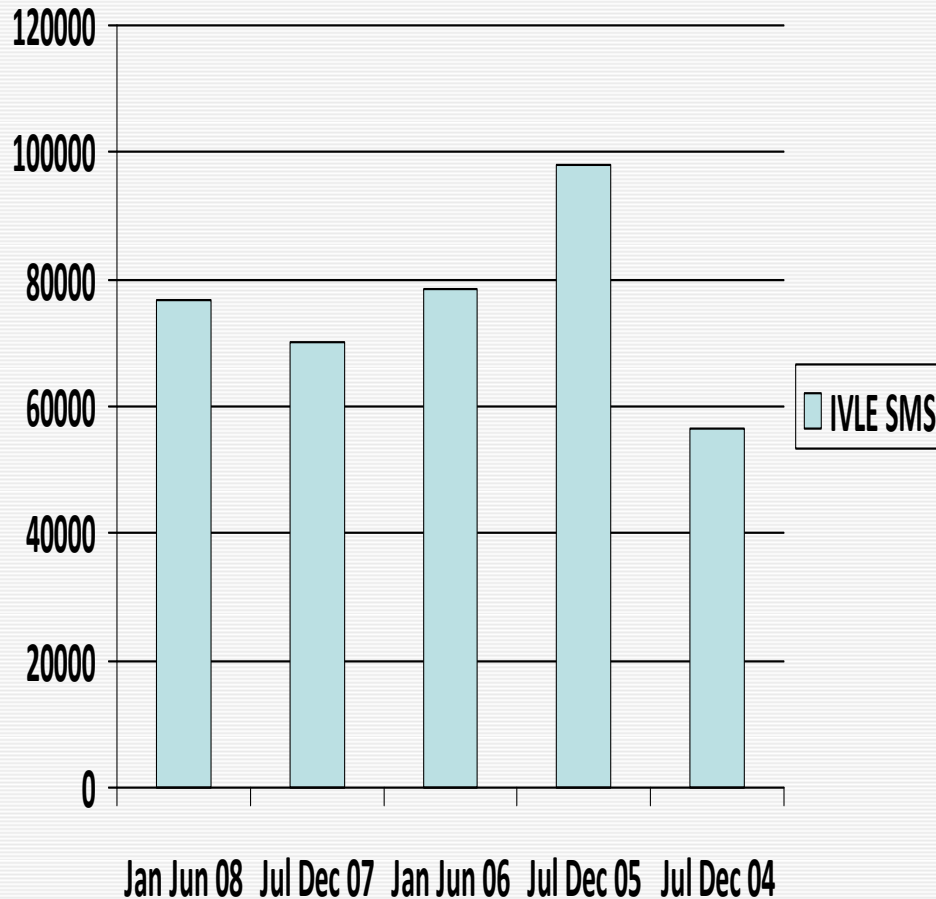
SSL



Clients

SSL

Knowledge, when, where and how you want it



Mobile Applications

- Mobile IVLE
- Podcast Lectures
- Mobile Blogs
- NUS Staff Directory

SMS Services


Examination Marks

IVLE Course Announcements

to reinforce learning and study

Streaming video or audio of lecturer

Lecture 25
TAN SUN TECK, LTS,ENG



12:56 Scene 7 of 36 13:56

Paused 13:05 / 49:58

Scenes Info Help

7. 12:56

1	3	5	7	2	3	6	7	4	5	6	7
9	11	13	15	10	11	14	15	12	13	14	15
17	19	21	23	18	19	22	23	20	21	22	23
25	27	29	31	26	27	30	31	28	29	30	31

8. 13:56

Created with Apreso

Clicking on index jumps exactly to that point in the Webcast lecture

1 2 4

1	3	5	7	2	3	6	7	4	5	6	7
9	11	13	15	10	11	14	15	12	13	14	15
17	19	21	23	18	19	22	23	20	21	22	23
25	27	29	31	26	27	30	31	28	29	30	31

8 16

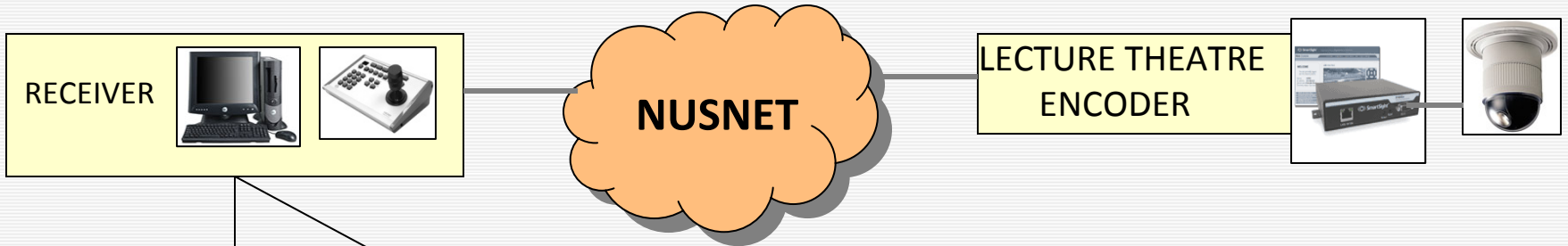
8	9	10	11	16	17	18	19
12	13	14	15	20	21	22	23
24	25	26	27	24	25	26	27
28	29	30	31	28	29	30	31

Lecture 25
TAN SUN TECK
LTS,ENG
dcstanst@nus.edu.sg

Created on 11/12/2008 12:05:00

Students review desktop that is an exact replica of lectern PC

WEBCAST LECTURE MANAGEMENT



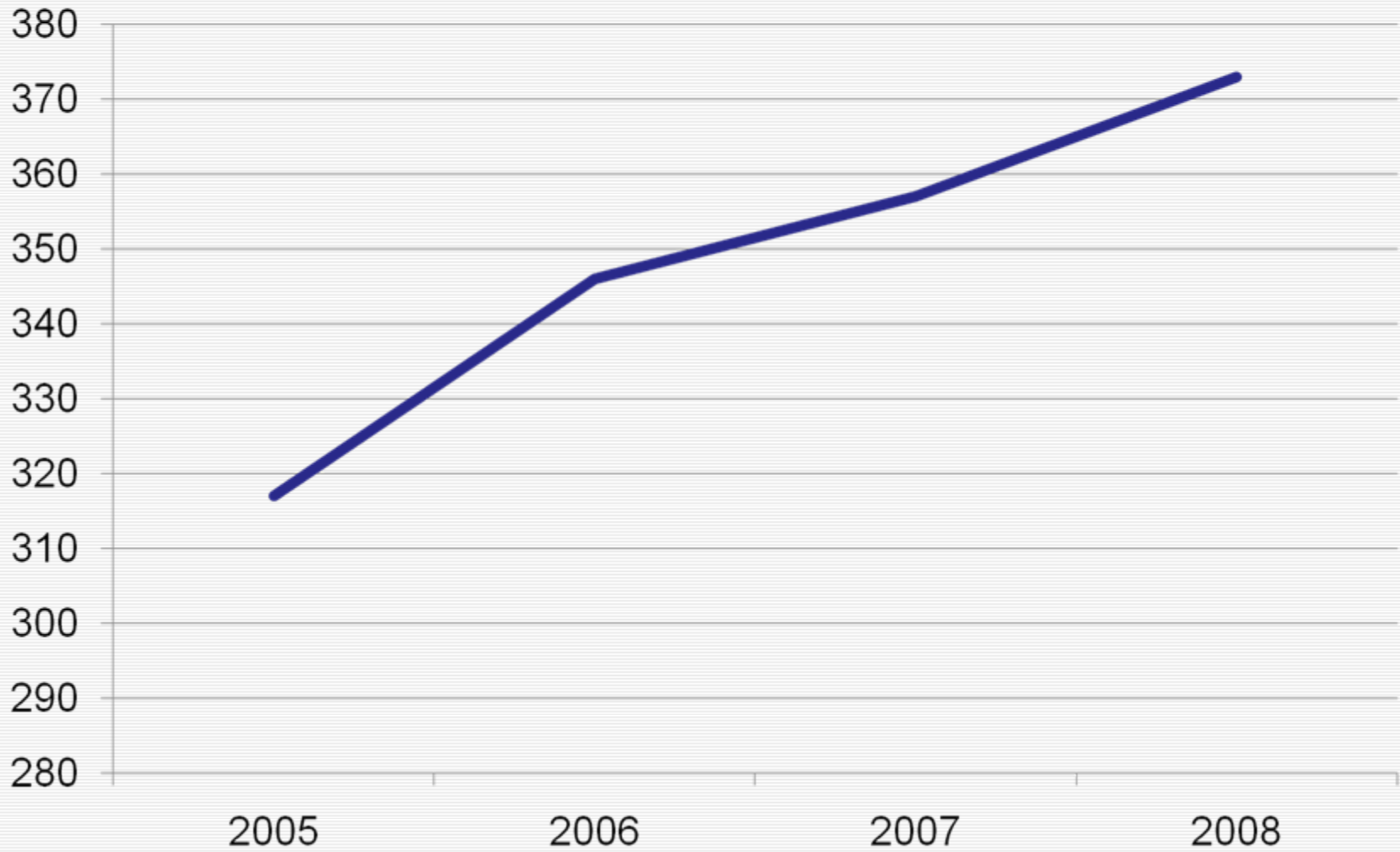
Faculty Control Room

The screenshot shows the **nDVR Live Viewer** software interface. The top bar includes a menu (Directory, View, Camera, Alarm, Layouts, Tools, Help) and system information (8/6/2008, 9:19:27 AM, Monitor 36, Tile 2, Camera 425). The main area is divided into a control panel on the left and a grid of camera feeds on the right. The control panel features a directional pad and numbered buttons (1-6). The camera grid shows multiple views of lecture theatres, labeled with IDs like LT17 (17), LR425 (425), LT15 (15), LT27 (27), LT9 (9), LT24 (24), LR424 (424), LR423 (423), and LT32 (32). A tree view on the left lists various camera units under 'smartsight2'. At the bottom, a log table displays system events.

Entity	Date	Type	Description
LT7 - Enc - PTZ	8/6/2008 9:18:30 AM	PTZ activated	CIT
LR423	8/6/2008 9:18:44 AM	RTP packets lost	2 RTP pac...
LR422	8/6/2008 9:19:12 AM	RTP packets lost	10 RTP pa...
LR426	8/6/2008 9:19:12 AM	RTP packets lost	10 RTP pa...
LT24 - Enc - PTZ	8/6/2008 9:19:17 AM	PTZ stopped	Admin
LR425 - Enc - PTZ	8/6/2008 9:19:18 AM	PTZ activated	Admin

Video Management Software capable of managing video units across the campus

Number of Webcast Request



MULTIMEDIA ENABLED PRESENTATIONS

VISION
Caring Action In Response to an Emergency
The NUS CARE.NL Introduction module

NUS
MUSNET Join Domain Setup Guide

ME2102 Engineering Visualization & Modeling Couplings
A.P. Lim Kai Sing
Room EA 50-17
Tel: 6742 2478
aplim@nus.edu.sg

MATRIX OPERATIONS
Example
Let $A = \begin{bmatrix} 1 & 2 & 3 & 4 \\ 5 & 6 & 7 & 8 \end{bmatrix}$ and $B = \begin{bmatrix} 1 & 2 & 3 & 4 \\ 5 & 6 & 7 & 8 \end{bmatrix}$
 $AB = \begin{bmatrix} 1 & 2 & 3 & 4 \\ 5 & 6 & 7 & 8 \end{bmatrix} \begin{bmatrix} 1 & 2 & 3 & 4 \\ 5 & 6 & 7 & 8 \end{bmatrix}$
 $= \begin{bmatrix} 34 & 44 & 54 & 64 \\ 84 & 94 & 104 & 114 \end{bmatrix}$

Web-based analysis results of health monitoring system
NUS
LPT Team Conference, NUS, Singapore

Giving an Oral Presentation
Carissa Young
Centre for English Language Communication

The Spread of Cancer
Dr Robert Hewitt
Department of Pathology
National University of Singapore

Self Access English Learning Facility
LOGIN

Creating a WTO Course for Universities
Faculty of Law
National University of Singapore

Chinese 1 中文
Lesson 3.2
Do not translate this document or what is said in it. It is for personal use only. Please do not distribute it.

ein- oder kein-
Eine Einführung

SQL and Programming Languages
Presented by [Name]

PL3240. GROUP DYNAMICS
Lecture 1. Introduction and Course Preview
Lecturer: Dr. Elizabeth Fook

REASON & PERSUASION
Lecture 1, Part I
Plato & Socrates
Asst. prof. John Hobbie

Architectural drawings showing a building's structural framework.

Outline
The software development process
Users and stakeholders
Requirements engineering process
Requirements engineering tools

eModules to support interactive online courseware



THE NATION'S HEALTH Lessons from SARS

Introduction Lesson 1 Lesson 2 Lesson 3 **Lesson 4** Lesson 5 Lesson 6 Resources Updates



Lesson 4 :: The Scientific Basis of Personal Preventive Measures

Objective

At the end of this lesson, the student is expected to demonstrate an understanding of personal preventive measures and social responsibility in preventing the spread of infection.

Synopsis

It is now clear that SARS is spread by infected droplets through close person-to-person contact. Personal preventive measures are important. Such measures can be divided into primary preventive measures and secondary measures. Primary measures consist of handwashing, wearing personal protective equipment (PPE) – mask, glove, gown and goggles as appropriate, avoidance of SARS affected areas, and improvement in general state of health.



NUS
National University of Singapore



ACADEMIC CULTURE

Home > Academic Ethics > Plagiarism :: **A Scenario**

What would you do?



DISCUSS

Conferencing Mode

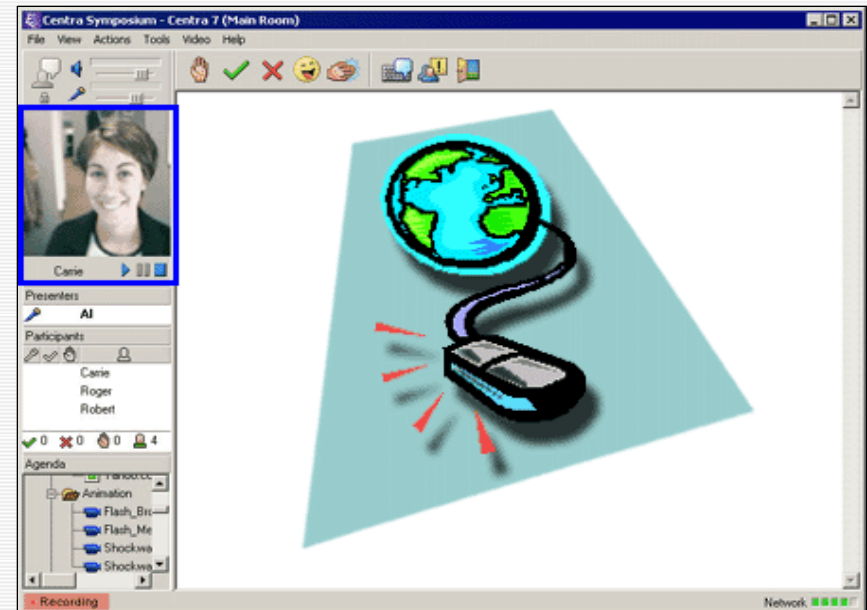
Singapore – MIT Alliance 2

Advanced Materials for Micro- and Nano-Systems
Chemical and Pharmaceutical Engineering
Computation and Systems Biology
Computational Engineering
Manufacturing Systems and Technology



Web-Based Mode

M.Sc. in Financial Engineering (DL)



Joint Teaching and Co-Supervision



- Some 50 professors from MIT and another 50 from NUS, NTU and the Research Institutes conduct courses and co-supervise the students
- Interaction with MIT professors and students takes place face-to-face as well as via distance education facilities
- Students at MIT and Singapore ask questions in 'real-time' and participate in classroom discussions

Network TV

- BBC
- Discovery
- Channel News Asia
- Research Channel
- Channels 5, 8, U, Suria
- NUScast

You Tube English+ Sign Up | QuickList | Help |
 Videos | Channels | Community | Upload

NUS National University of Singapore
 Videos | Playlists | Groups

National University of Singapore [Subscribe](#)

NUScast
 Joined: August 12, 2008
 Last Sign In: 1 hour ago
 Videos Watched: 448
 Subscribers: 10
 Channel Views: 711

DIRECTOR

The National University of Singapore (NUS) is a multi-campus university of global standing, with distinctive strengths in education and research and an entrepreneurial dimension. It offers a comprehensive range of disciplines ranging from architecture to medicine to music. The NUS student

Discovery.com
 Professor LARRY MARTIN
 我們也知道1萬
 3千年前劍齒虎依然存在

Media Repositories

- NUS YouTube
- NUScast
- NUS Galleria (public and private)

IVL.F Webcast Lecture - Microsoft Internet Explorer

IT1001
INTRODUCTION TO COMPUTING

LECTURE 2
COMPUTERS : COMPONENTS AND CATEGORIES
NAMATA BHANDAR
 Wednesday, 17 Jan 2007, 02:00 PM
 LT27
 (For Mac User [click here](#))
[Download Lecture](#)
 MP3 Podcast

What Can Computers Do?

00:21:34	08. What Can Computers Do?
00:22:03	09. Computer Components
00:23:59	10. Six Categories of Computer Hardware
00:28:53	11. Computer Hardware-Components
00:29:16	12. Two Major Categories of Software
00:32:17	13. System Software
00:33:08	14. Application Software
00:33:10	15. Computers Categories
00:35:49	16. Embedded Computers
00:36:03	17. Handheld Computers

Data → **Information**

Reads input [data="command"]

INPUT → **COMPUTATION** → **OUTPUT**

Data collected and processed into meaningful form

Data: Raw facts

Information: Computation (math) [A*B], Logic (decision making) [if...then...else]

Case Study – Faculty of Medicine 3rd year / Final year Examinations

- Started in year 2004
- Clinical Vignette-based MCQ
Paper 3
- Modified Essay Questions
MEQ
- Cohort of 213 students

- During examination, prevents
- surfing of website for answer
 - reading emails
 - MSN or yahoo
 - copying questions to local or external drive
 - opening of file locally from the PC or externally from thumbdrive

- Yong Loo Lin School of Medicine; Department of Medicine
Student Group Size: ~220 students
Frequency: every year for Final Year Exam and Re-exam
- Yong Loo Lin School of Medicine; Department of Surgery (*New!*)
Student Group Size: ~220 students
Frequency: every year for Final Year Exam and Re-exam
- Faculty of Law @ BTC (*New!*)
Student Group Size: 30 students
Frequency: each Semester for Quiz 1 & Quiz 2
- Arts and Social Sciences; Centre for Language Studies; Malay 2 (*New!*)
Student Group Size: 12 students
- School of Computing for Computer Networks Laboratory
Student Group Size: ~70 students
Frequency: every Semester 1
- Arts and Social Sciences; English Language & Literature
Student Group Size: 14 students

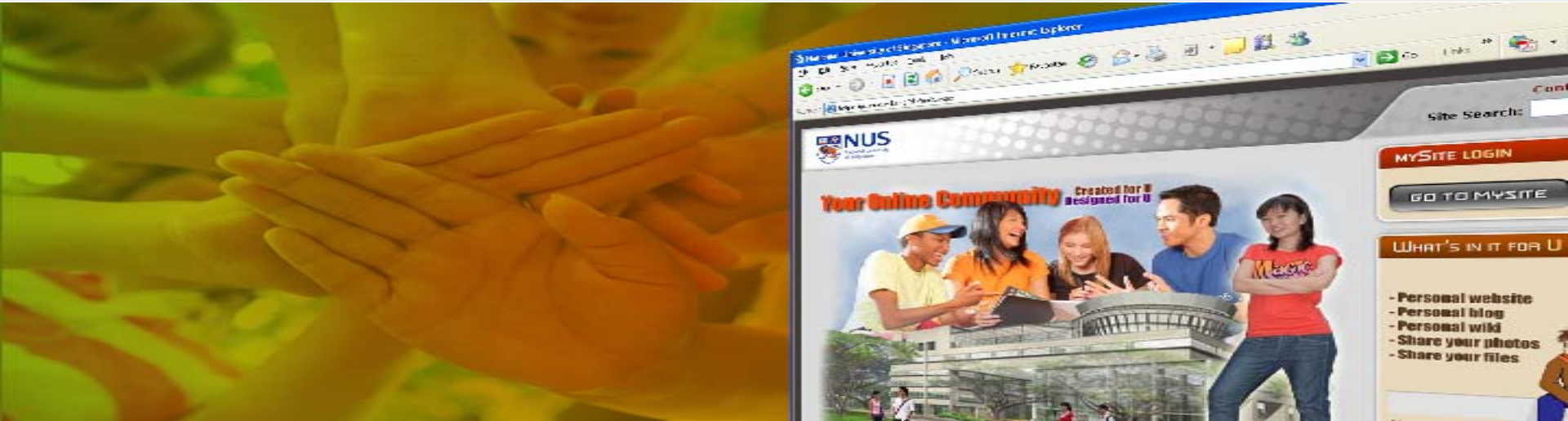
Why

In preparation for flu pandemic plan, where if a flu pandemic hits, staff and student will need to be familiar with IVLE and related technologies like webcast, Breeze, virtual classroom, etc. Can e-Learning infrastructure and support demands be met?

When

- E-Learning Week on Feb 18th – Feb 22nd 2008 [CNM, OSHE, CIT]
- No teaching during this week for CNM (20 staff, 300 students)
- Classes supported by IVLE, Centra and PowerPoint [Breeze]

student driven; informal learning



- **NUS Communities** share, exchange files, photos and discuss with friends
- **Blog.NUS** start a blog about your studies, work and life
- **Wiki.NUS** start a wiki to collaborate on documents with friends
- **IVLE Communities** IVLE space to share, exchange and discuss with friends

- **Mobile Blogs** share, exchange files, photos and discuss with friends on your mobile phone
- **NUS 2nd Life** share, exchange files, photos on the 3D virtual network



- Lets you quickly and effectively check all of your students' work in fraction of the time
- Results are based on **searches of billions** of pages from both current and archived instances of the internet, millions of student papers and commercial databases of journal articles and periodicals.

Plagiarism eModules to educate students on good academic culture

ACADEMIC CULTURE DISCUSS

[Home](#) > [Academic Ethics](#) > [Plagiarism](#) :: [A Scenario](#)

What would you do?




Plagiarism :: [Practical Issues](#)

DISCUSS | SURVEY | HELP

"I came about my project... this one about the parking system. You remember it's a vehicle optical number recognition system? We had to design one. And we had to deal with partially degraded inputs under bad weather conditions. That's what the instruction was.

You wrote plagiarised on the finished piece. Excuse me, but it's not plagiarised. It's my own work! You wrote: I read this last year. Correct. You read parts of it last year. I started working on the project then - in your class. And it interested me so much, I did more work.

So, it's partly the same work, but I changed some also. I added the fog filter feature this semester. So, this is what I want to know - is it possible you can re-mark? I don't want to carry this F."

Yes, this is plagiarism No, this is not plagiarism

TOC Introduction A Scenario Ethical Issues **Practical Issues** Consequential Issues Summary

Corporate Videos

We produce corporate videos on a University, Faculty, Department or Unit level.

Live Event Coverage

CIT deploys a multi-camera team that covers a multitude of corporate and academic events.

Instructional Videos

These videos are used as teaching aids involving specific subjects.

Informational Videos

We also produce informational videos for academic and corporate events.

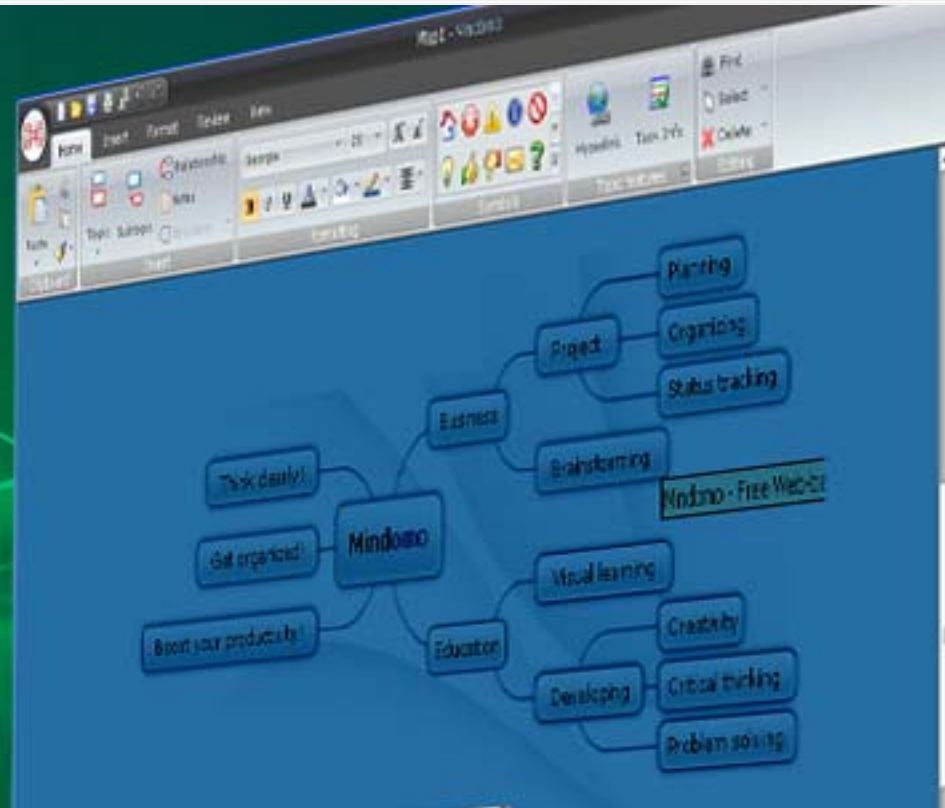
Video Assessment Course

We do regular training courses on video production, editing, assessment and evaluation





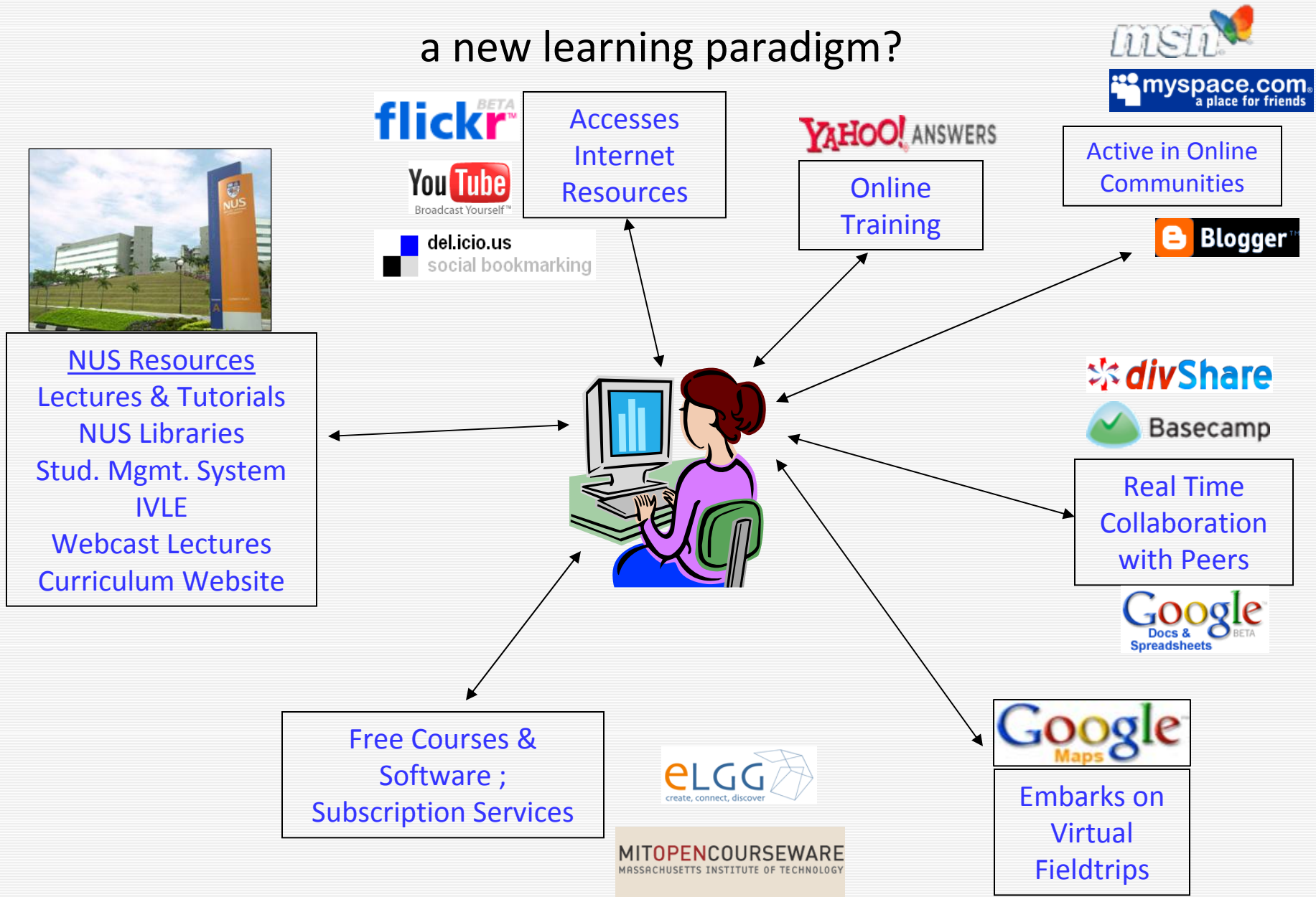
- Classroom Clickers to enhance student participation and enable instant feedback.
- Helps to you to overcome the "silent majority".
- Anonymous response encourages the students to participate.



- **Online mind Mapping tool** – *Access anytime anywhere*
- Multiple platform support – *Window, Mac and Linux*
- Multiple languages support – *European languages, Japanese and Chinese*
- Browser based online storage

NUS Educational Technology Projects

a new learning paradigm?



NexUS

Your Personal Learning Environment

<http://nexus.nus.edu.sg>

connect.live.learn

Unified Communication Platform



Lectures from NUS, BTC
Other IHLs, Organisations



Portable 3G Phone Users

A conferencing platform that can scale from high-quality board room systems, mobile phones to desktop systems to support **live interactive lectures** between NUS campuses and other IHLs and collaboration among students



Unified
Communication
Platform

University Town



Telepresence



NUS Students Desktop Video
Conferencing, IM with UT
Lecturers and Students



go where potential students are going...

YouTube - NUScast's Channel - Windows Internet Explorer

http://www.youtube.com/nuscast

YouTube English Sign Up QuickList Help Sign In

Videos Channels Community Upload Search

NUS National University of Singapore

Videos | Playlists | Groups

National University of Singapore [Subscribe](#)

NUScast
 Joined: August 12, 2008
 Last Sign In: 3 days ago
 Videos Watched: 497
 Subscribers: 13
 Channel Views: 937

DIRECTOR

The National University of Singapore (NUS) is a multi-campus university of global standing, with distinctive strengths in education and research and an entrepreneurial dimension. It offers a comprehensive range of disciplines ranging from architecture to medicine to music. The NUS student community comprises a cosmopolitan mix of over 32,000 students from 88 countries, contributing to a vibrant and thriving campus life.

These videos are brought to you by the Centre for Instruction Technology.

City: **Singapore**
 Hometown: **21 Lower Kent Ridge Road**
 Country: **Singapore**
 Website: <http://www.nus.edu.sg>

Faculty of Arts and Social Sciences
NUS Business School
School of Computing
Faculty of Dentistry
School of Design and Environment
Faculty of Engineering
Faculty of Law

NUS Corporate Video
 From: NUScast
 Views: 1,325

1:23 / 5:55

Start | Inbox - Microsoft... | 5 Windows Ex... | Document1 - Mic... | YouTube - NUS... | Microsoft Power... | Search Desktop | Internet | 100% | 4:23 PM

cit.nus.edu.sg/nusfacilities



National University of Singapore

<http://www.nus.edu.sg>



Computer Centre

<http://www.nus.edu.sg/comcen>



Centre for Instructional Technology

<http://www.nus.edu.sg/cit>

Centre for Development of Teaching and Learning

<http://www.cdtl.nus.edu.sg>