

ليحرتل Nexus Dashboard Orchestrator نيوكت رايت يلى رمتسم رايت نم ةياهنلا ةطقن رخآ رمتسم

تايوتحمل

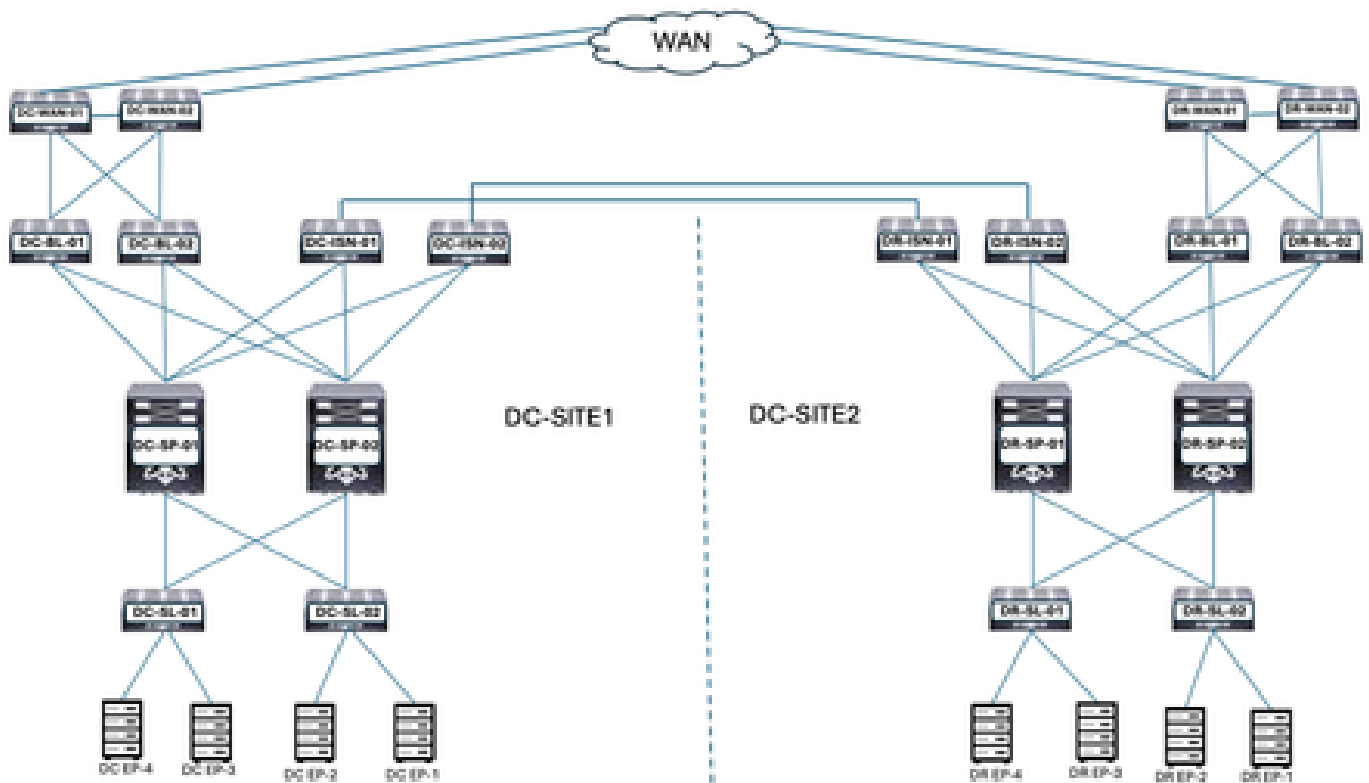
ةمدقملا

زكرم يلى تانايب زكرم نم ةياهن ةطقن ليحرتل ةبولطملا تاريغيغتلا دنستسملا اذه فصبي
اهنيوكت ورخآ تانايب

ةيئايزي ف ايچولوبوط

تانايب يزكرم ني ب طبارتلا 1 لكشلا نيبي

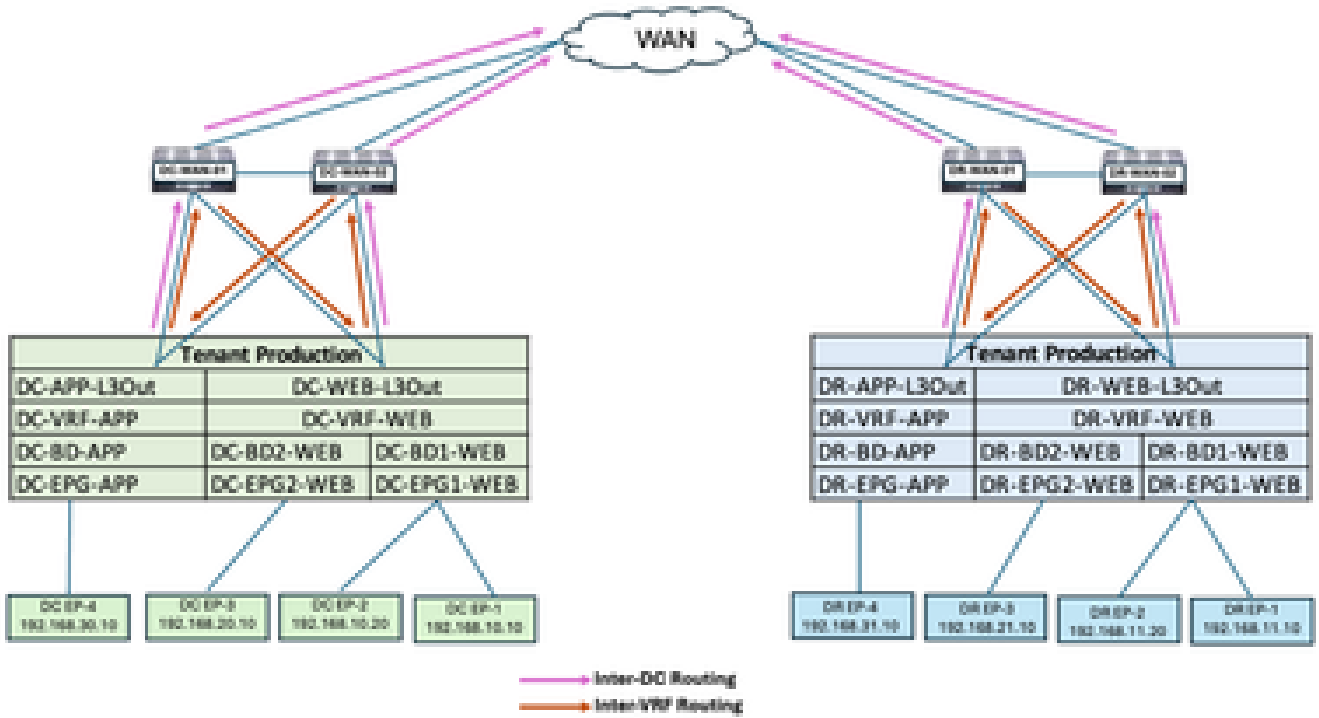
ةيئايزي ف ايچولوبوط: 1 لكش



ةيساسألا ةينبلا (DR) حالسلا نم ديچتلاو (DC) رمتسملا رايتلا عقاوم نمضتت
ةكبش تالوحم DR و (DC) رشابملا رايتلا عقاوم نمضتت (ACI) تاقيبطتلا يلع ةزكترملا
نيب ةكبشلا ةزهأو ةيعرفلا كالبشلاو يدودحلا قرولاو (WAN) قاطنلا ةعساو لاصتالا
ةلصتملا ةياهنلا طاقنو مداخللا قارواو (IS) عقاوملا

ةي قطنم اي جولو بوط

ةي قطنم اي جولو بوط : 2 لكش



نبي عقوم لال ك في اهنيوكت مت يتال ةي قطنم ل تانئال:

- DC و DR عقاوم في رجأتسم لجاتنا نيوكت مت
- DC1 عقوم في DC-VRF-APP و DC-VRF-WEB نيوكت مت
- DR-VRF-APP و DR-VRF-WEB نيوكت مت
- هاجتاب دودحل ةطقن لىل ةيلحم L3Out لوصو طاقن مادختساب VRF لك نيوكت متي
- WAN تالوحم هاجتاب دودحل ةقرو لىل ةيضارتفال تاراسم ل نيوكت متي
- VRF تالكبش نيبتالاصتال لتبائل هيجوتال مادختساب WAN تالوحم نيوكت متي
- DC تالكبش نيبو
- DC-BD1-Web/DC-EPG1-web و DC-BD2-web/DC-EPG2-web و DC-BD-APP/DC-EPG-APP يوتحت
- DR-BD1-Web/DR-EPG1-Web و DR-BD2-WEB/DR-BD-APP/DR-EPG-APP يوتحت
- عقي ببطت
- عقي ببطتلاو بيولل EPG في ةلصتمة ةياهن طاقن دجوت
- Nexus Dashboard Orchestrator في DR-SITE2 و DC-site1 ةفاضا مت

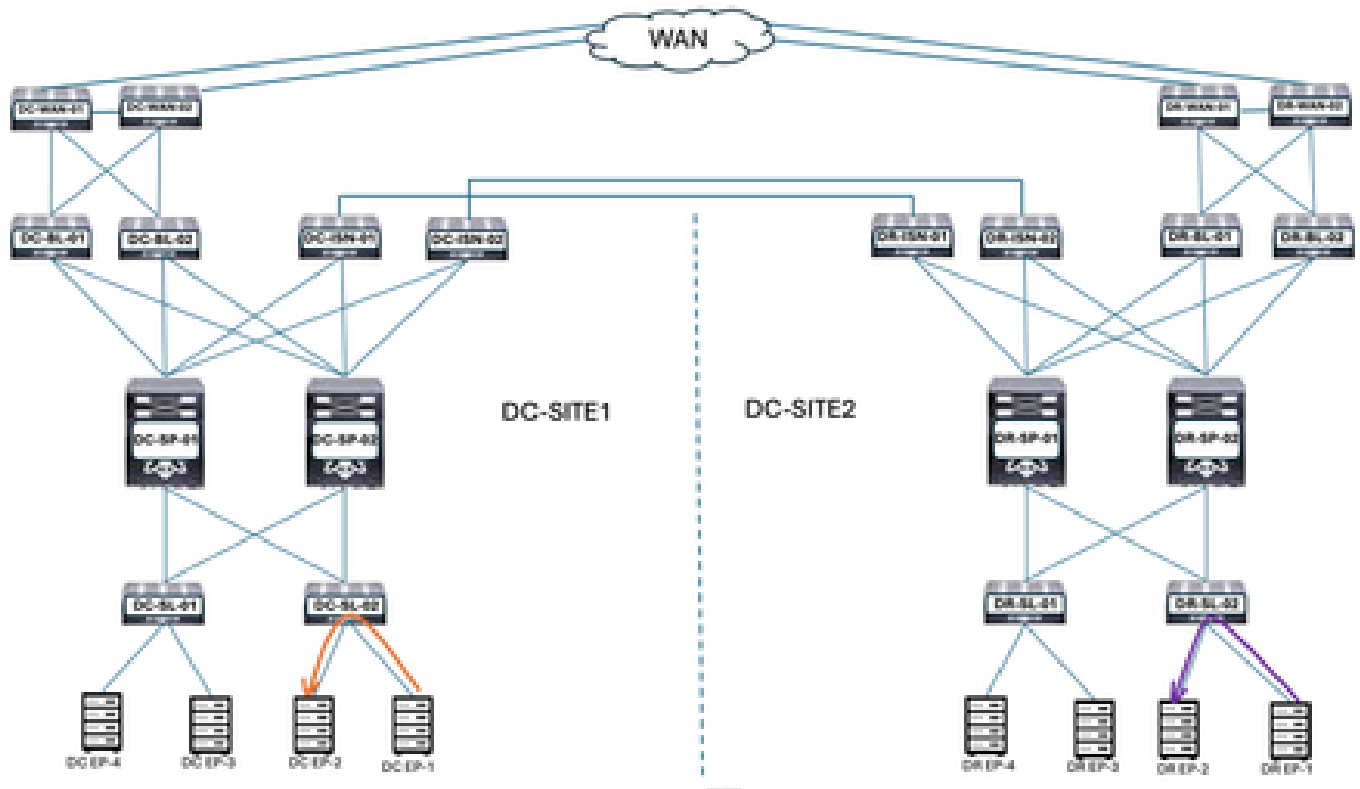
ةياهن لال ةطقن ليحرت لقب رورم لال ةكرح قفدت

تانانايبل زكارم في رورم لال ةكرح قفدت نم ةددعتم عاونأ كانه

- Intra EPG رورم ةكرح قفدت
- EPG نيبت رورم لال ةكرح قفدت
- فيلخادل VRF رورم ةكرح قفدت
- رشابم لال رايتال نيبت رورم لال ةكرح قفدت

Intra EPG رورم ةكرح قفدت

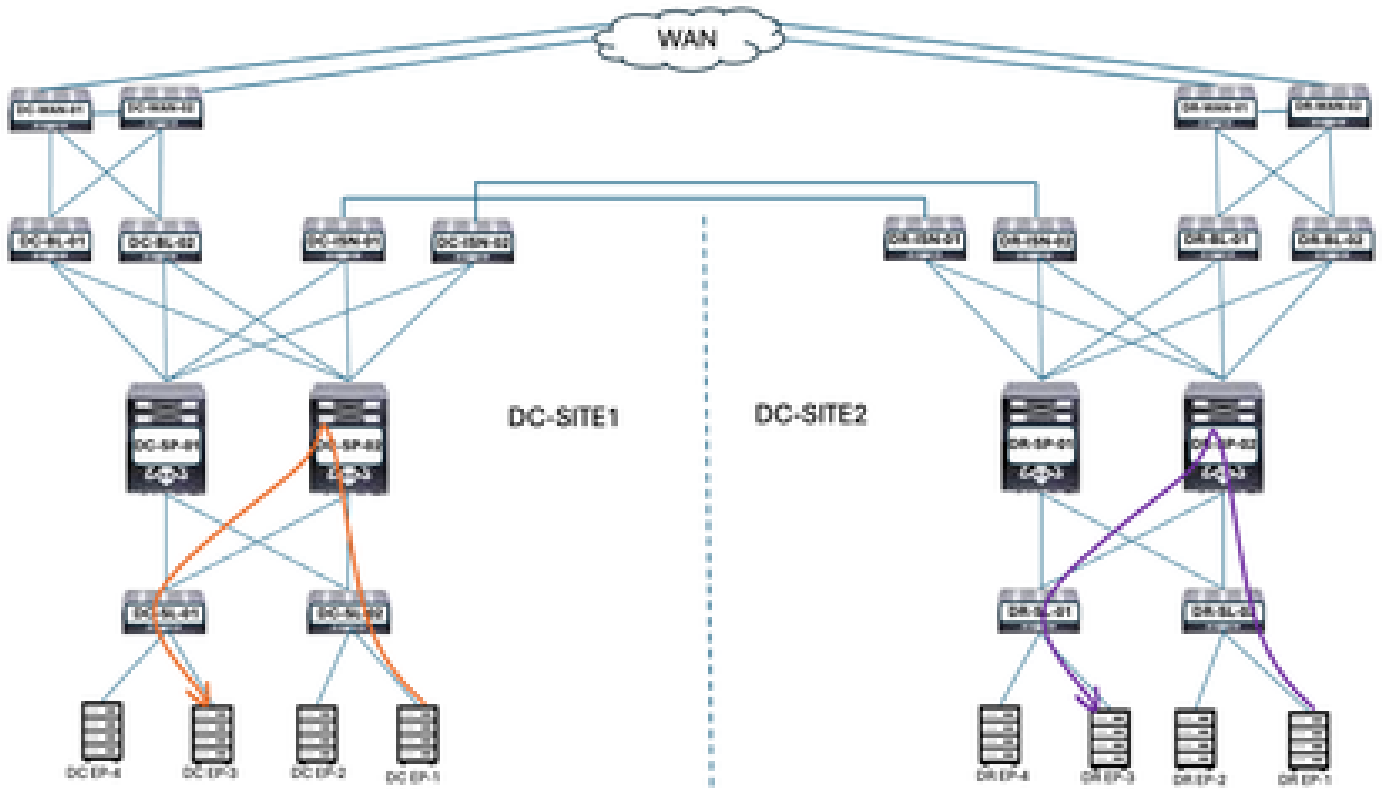
Intra EPG رورم ةكرح قفدت :3 لكش



شيح (EPG) جماربلا ةرادا ةومجم ني لاصتا ةبامب DC-EP-1 و DC-EP-2 ني لاصتالا دعي DC-EPG1-WEB. لاصتالا دعي DR-EP-1 و DR-EP-2 ني لاصتالا دعي DR-EPG1-WEB. لاصتالا دعي DR-EPG1-WEB. لاصتالا دعي DC-EPG1-WEB.

ينيبلال EPG رورم ةكرح قفدت

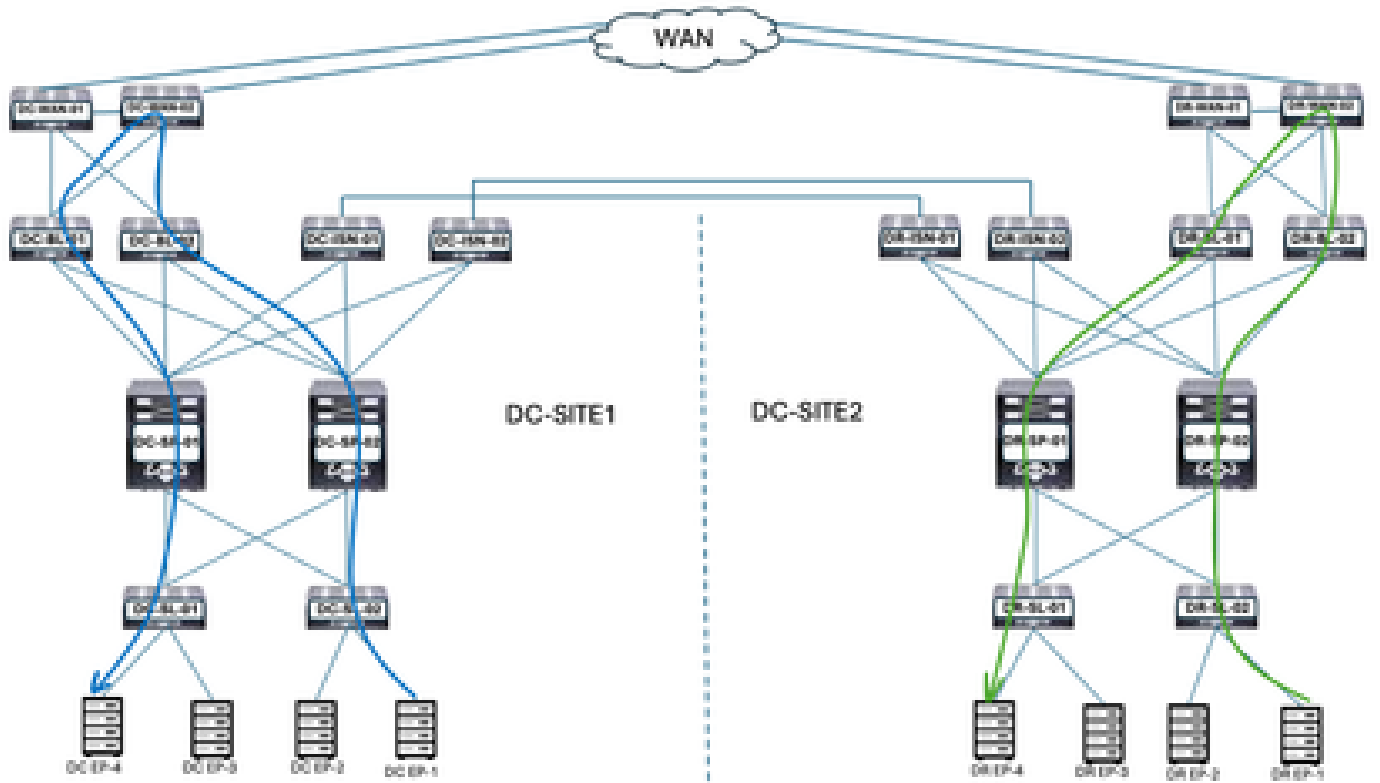
ينيبلال EPG رورم ةكرح قفدت :4 لكش



نېب لاصتال او، يلاوتلا ىل ع DC-EPG1-WEB و DC-EPG2-WEB ن م ع ج امه DC-EP-1 و DC-EP-3 نېب لاصتال او، يلاوتلا ىل ع DR-EPG1-WEB و DR-EPG2-WEB ن م ع ج امه DR-EP-1 و DR-EP-3 نېب لاصتال او، يلاوتلا ىل ع EPG. رورم ة ك ر ح ق ف د ت وه نېتاه ة ياه ن ل ا ي ت ط ق ن ة ك ر ح ق ف د ت وه نېتاه ة ياه ن ل ا ي ت ط ق ن نېب لاصتال او، يلاوتلا ىل ع EPG. رورم

ي ل خ ا د ل ا VRF رورم ة ك ر ح ق ف د ت

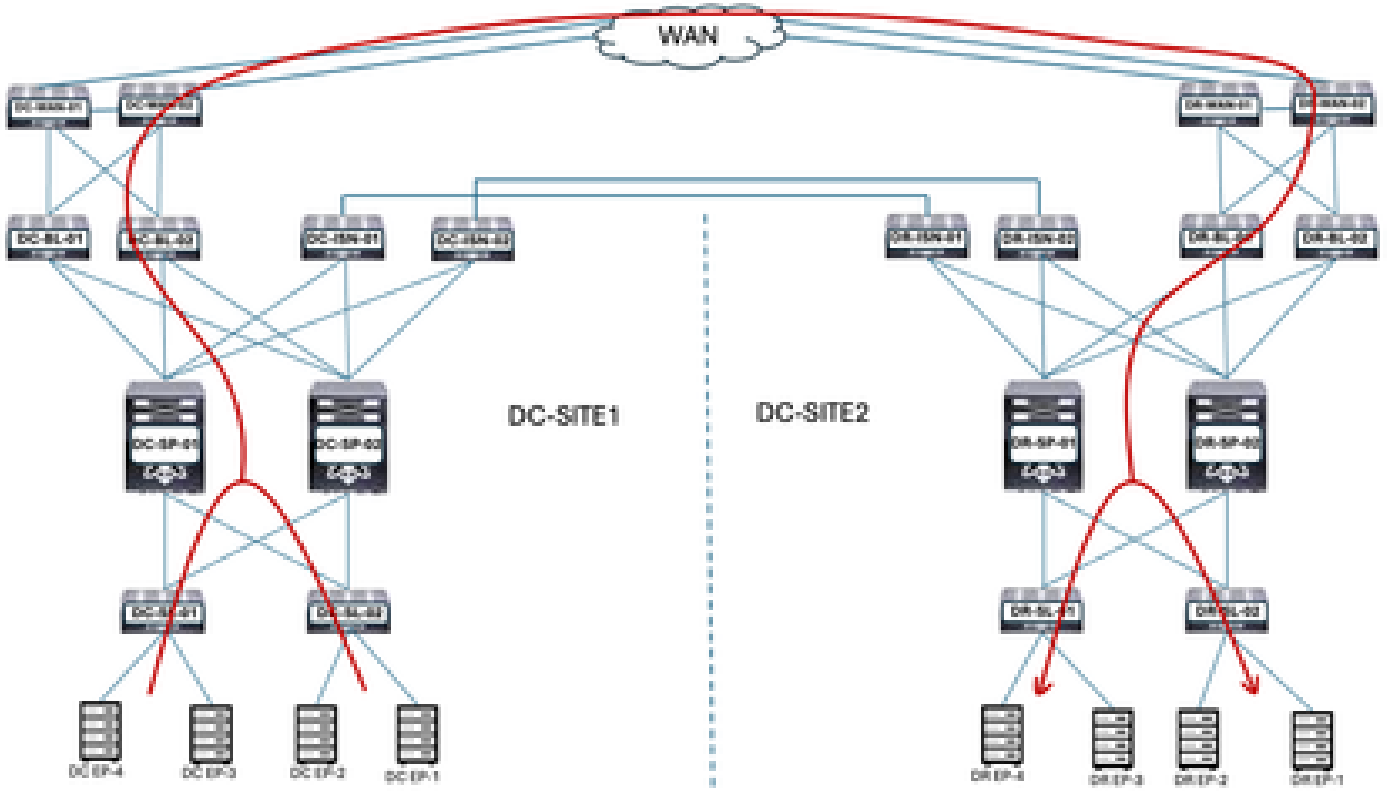
ي ل خ ا د ل ا VRF رورم ة ك ر ح ق ف د ت : 5 ل ك ش



في أال WAN DC تالوحم ىل إ تاناىبلا رورم ةكره هىجوت ةداعإب رشابملا رايتلا دودح ةقرو موقت VRF تالكبش نيبل لاصتال ل DC ل WAN تالوحم مادختسا م تي. VRF تالكبش نيبل لاصتال ل VRF تالكبش نيبل لاصتال ل موقت WAN تالوحم لالخ نم DC-EP-4 (VRF قيبطت) ب DC-EP-1/EP-2 (VRF Web) لاصتي. في أى لوصحل ل DR WAN تالوحم ىل إ تاناىبلا رورم ةكره هىجوت ةداعإب Dr. Border Leaf ةزيم VRF تالكبش نيبل لاصتال ل DR WAN تالوحم مادختسا م تي. VRF تالكبش نيبل لاصتال ل WAN تالوحم لالخ نم DR-P-4 (VRF قيبطت) ب DR-EP-1/EP-2 (VRF Web) لاصتي.

رشابملا رايتلا نيبل رورملا ةكره قفدت

رشابملا رايتلا نيبل رورملا ةكره قفدت: 6 لكش



قرو موقت. دودحللا قرو ىلإ اههيجوت داعملل DR-Endpoints و DC ل ةياهنللا طاقن نيب لاصتاللا تالاصتاللا WAN تالوحم مادختسا متي. WAN تالوحم ىلإ رورملا ةكرح هيجوت ةداعإب دودحللا تانايبللا زكارم نيب.

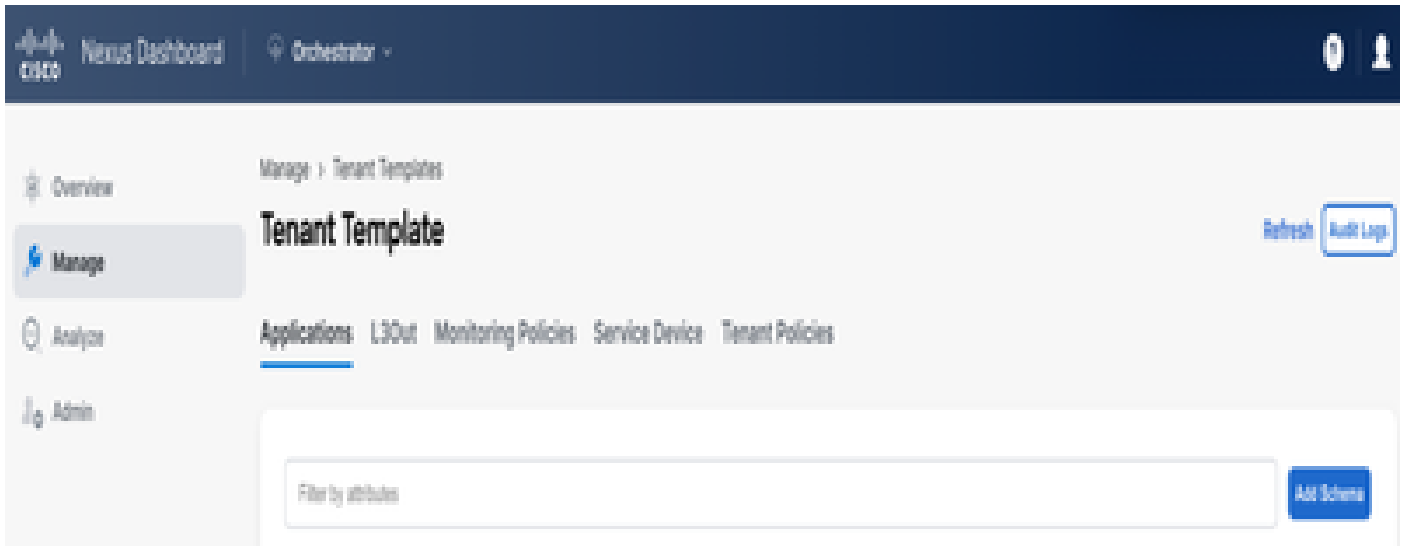
ليحرتللا ةطخ

نبي عومللا الك نيب ةدعتملل عقاومللا عاشنإل Nexus Dashboard Orchestrator مادختسا متي، DC1 ىلإ DR-SITE2، عوم نم اهليلحرت دارملا ةياهنللا طاقنو عقاومللا ربع ةدتمملل EPG/BDs،

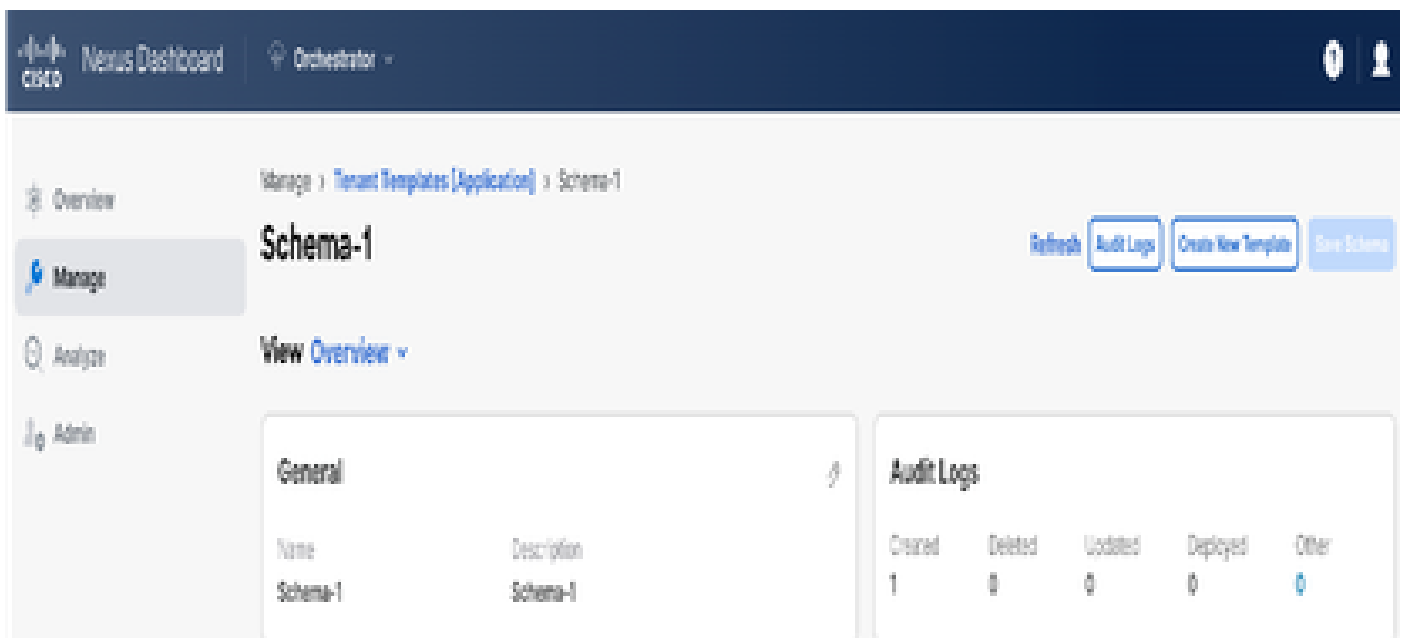
1-ططخملا عاشنإ

Schema-1 لالخل Nexus Dashboard Orchestrator نم هؤاشنإ مت يذللا.

ططخم ةفاضل - رجأتسملا بلاق: 7 لكش



ططخمل مسا ةفاضل: 8 لكش



Template-VRF-Contract ةطساوب هديدمت مت عاشنإ

اذه نم اعزج انوكي ل DC-SITE1 و DR-SITE2 Schema-1 لخد Template-VRF-Contract عيسوت مت نوكي نأ بجي. ددمملا بلالقا وه اذه. بلالقا لسفنب انرتقيل Tenant-Production و Template اذه. يرخال BD/EPGs ربع تانئال هذه ةكراشم ل ارطن، "لصفنم بلالقا" نم اعزج دوقعلاو VRF عم دقاعتلاو DC-SITE1 عون نم (VRF) يرهاظلا ددرتلا قاطن عيسوتل هم ادختسإ دارملا بلالقا ل DR-SITE2.

ACI ل ةددمت تالكبش ةومجم ديدحت - قيبطت بلالقا ةفاضل: 9 لكش

Add Application Template

✕

1 Select a Template type 2 Detail 3 Summary

Select a Template Type
Let's choose the type of template you want to work with

- ACI Multi-Cloud**
 - On-prem ACI fabric to fabric
 - On-prem ACI fabric to cloud fabric
 - Cloud fabric to cloud fabric
- NDPC**
 - NX-OS based network
- Cloud Local**
 - Non-stretched template for cloud fabric local BGP+IPv6 connected fabric

رجأت سمل اجاتنا دح، WEB-VRF-Contract-Extended - بلال المس ا بلق ة فاضا: 10 لكش

Add Application Template

✕

1 Select a Template type 2 Detail 3 Summary

Details
Now name the template and select a tenant

- ACI Multi-Cloud**
 - On-prem ACI fabric to fabric
 - On-prem ACI fabric to cloud fabric
 - Cloud fabric to cloud fabric

GENERAL

Display Name *
Template-WEB-VRF-Contract-Stretched
Internal Name: Template-WEB-VRF-Contract-Stretched
[Add Description](#)

Select a Tenant *
Production

Deployment Mode

- Multi-Fabric
- Autonomous

[Cancel](#) [Back](#) [Next](#)

Template-Web-VRF-Contract-Extended لى صافت: 11 لكش

Summary

ACI Multi-Cloud

- On-prem ACI fabric to fabric
- On-prem ACI fabric to cloud fabric
- Cloud fabric to cloud fabric

Details

Template name
Template-WEB-VRF-Contract-Stretched

Deployment Mode
Multi-Fabric

Tenant
Production

Cancel Back Continue to template

Template-VRF-Contract-Extended يف دقع داريت سا

لاصتال دوقع عاشنا م تي. DC1 ع قوم نم DC-VRF-WEB-Contract و DC-VRF-WEB داريت سا
بب EPG لاصتا و EPG-to-L3Out نيب

DC-SITE1 ددحو داريت سا يل ع رقنا: لكش 12

Manage > Tenant Templates (Application) > Schema-1

Schema-1 Refresh Audit Logs Create New Template Save Schema

0 Out of Sync 0

IMPORT SELECT Create

DC-SITE1
DR-SITE2

DC1 ع قوم نم دقع دي دحت: لكش 13

POLICY TYPE		<input type="checkbox"/> SELECT TO IMPORT	<input type="text"/>	IMPORT RELATIONS
APPLICATION PROFILE	0 out of 2	<input type="checkbox"/>	DC-EPG-TO-EPG-APP-CON 1 FILTER	
EPG	0 out of 3	<input checked="" type="checkbox"/>	DC-EPG-TO-EPG-WEB-CON 1 FILTER	<input checked="" type="checkbox"/>
EXTERNAL EPG	0 out of 2	<input type="checkbox"/>	DC-EPG-TO-L3Out-APP-CON 1 FILTER	
CONTRACT	2 out of 4	<input checked="" type="checkbox"/>	DC-EPG-TO-L3Out-WEB-CON 1 FILTER	<input checked="" type="checkbox"/>

DC1 ع قو م ن م ة ف ص ت ل ل م اع د ي د ح ت : 14 ل ك ش

POLICY TYPE		<input type="checkbox"/> SELECT TO IMPORT	<input type="text"/>	IMPORT RELATIONS
APPLICATION PROFILE	0 out of 2	<input type="checkbox"/>	DC-EPG-TO-EPG-APP-FIL	
EPG	0 out of 3	<input checked="" type="checkbox"/>	DC-EPG-TO-EPG-WEB-FIL	
EXTERNAL EPG	0 out of 2	<input type="checkbox"/>	DC-EPG-TO-L3Out-APP-FIL	
CONTRACT	2 out of 4	<input checked="" type="checkbox"/>	DC-EPG-TO-L3Out-WEB-FIL	
FILTER	2 out of 4			

DC1 ل ا ج م ل ا ب م ك ح ت ل ا ة د ح و ع ق و م ن م VRF د ي د ح ت : 15 ل ك ش

POLICY TYPE		<input checked="" type="checkbox"/> SELECT TO IMPORT	IMPORT RELATIONS
APPLICATION PROFILE	0 out of 3	<input type="checkbox"/> DC-VRF-APP	
EPG	0 out of 3	<input checked="" type="checkbox"/> DC-VRF-WEB	
EXTERNAL EPG	0 out of 3		
CONTRACT	2 out of 4		
FILTER	2 out of 4		
VRF	1 out of 2		

دقعال تامول عم و VRF عم ةدمم لـ web-VRF-contract-بلاق 16 لكش

Manage > Tenant Templates [Application] > Schema-1

Schema-1

Refresh Audit Logs Create New Template Save Schema

Template Summary

Type: Application Tenant: Production Template Status: Out of Sync Associated Fabric: 2 (0 In Sync, 0 Out of Sync) Last Action: Updated Deployment Mode: Multi-Fabric

Filter: [] Import Select Create

Contracts: DC-EPG-TO-EPG-WEB-COR DC-EPG-TO-L3Out-WEB-COR

VRFs: DC-VRF-APP DC-VRF-WEB

رشن VRF-Contract-Extended-بلاق رشن

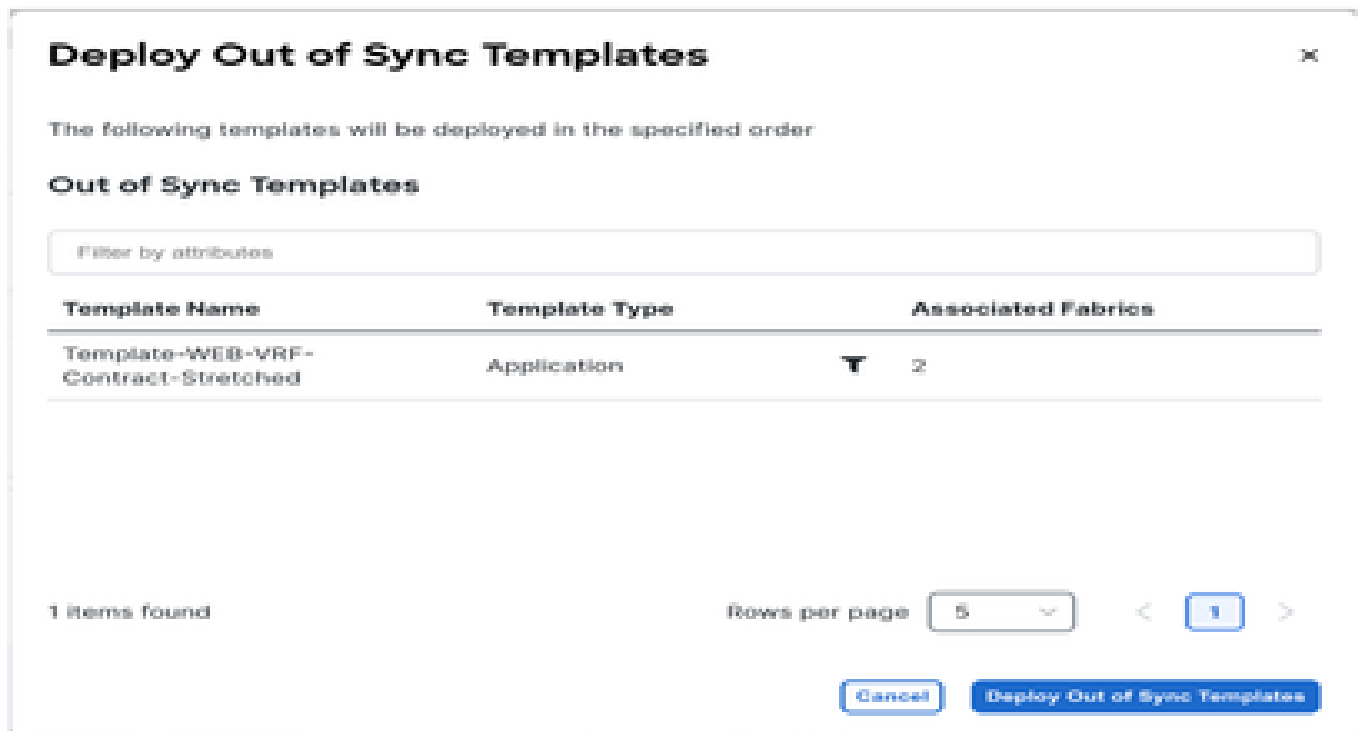
لاجل م كحت ال ةدو ع قوم دحو و دق بجوم هديدمت مت يذالـ VRF-بلاق ال رشن قوف رقنا DC1 و DR-SITE2

لاجل م كحت ال ةدو ع قوم دحو و دق بجوم هديدمت مت يذالـ VRF-بلاق ال رشن قوف رقنا DC1 و DR-SITE2

رشن VRF-Contract-Extended-بلاق رشن 17 لكش



ةنم ازملا بلاوق رشن :18 لكش



رشنلا لمتكا :19 لكش

Manage > Tenant Templates (Application) > Schema-1

Schema-1

View **Template-WEB-VRF-Contract-Stretched**

Template Properties •(DC-SITE1) •(DR-SITE2)

Template Summary

Type: Application Tenant: Protection Template Status: **In Sync** Associated Fabric: **2** Last Action: **Deployment Successful** Deployment Mode: Multi-Fabric

Last Deployed: Jan 3, 2025 09:07 pm

Filter: IMPORT SELECT Create

Contracts

- DC-EPG-TO-EPG-WEB-COH
- DC-EPG-TO-L3Out-WEB-COH

VRFs

- DC-VRF-APP
- DC-VRF-WEB

نبي عقوم الالك على عروش نم ال دوقع لاولي كل سال ال ددرت الة حص نم ققحت ال: 20 لكش

System | **Tenants** | Fabric | Virtual Networking | Admin | Operations | Apps | Integrations

ALL TENANTS | Tenant Search: | common | **user7-global** | user7-global | user7-global

This object was created by the Nexus Dashboard Orchestrator. It is recommended to only modify this object using the NDO GUI.

Tenant - user7-global

Summary | Dashboard | Policy | Operational | Stats | Health | Faults | History

Application EPGs

3 Total

0/100

Endpoint Security Groups

0 Total

Bridge Domains

3 Total

0/100

VRFs

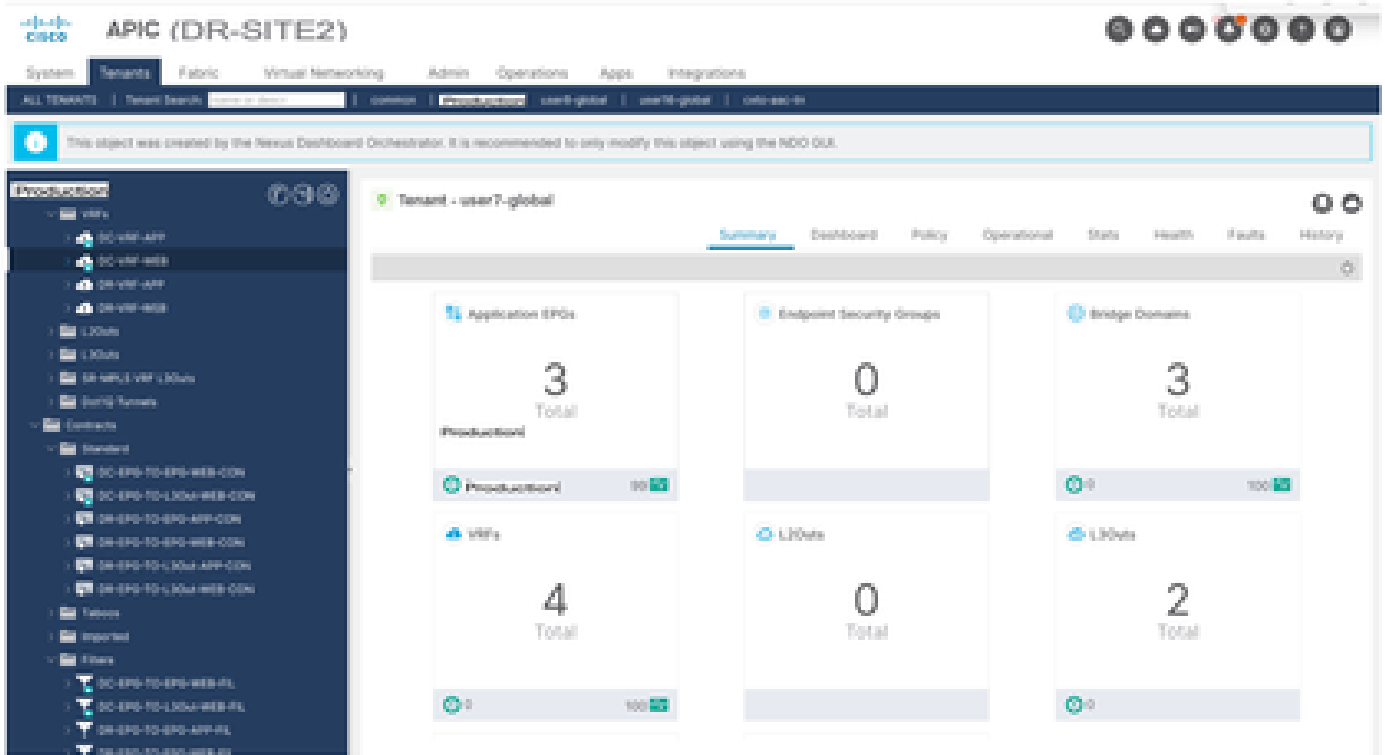
2 Total

L3Outs

0 Total

L3Outs

2 Total



إضافة Template-EPG1-BD1-Extended

يتم إضافة DC-SITE1 و DR-SITE2 إلى DC-SITE1. تم إنشاء EPG1-BD1-Extended في DC-SITE1 و DC-SITE2. تم إنشاء EPG1-BD1-Extended في DC-SITE1 و DC-SITE2. تم إنشاء EPG1-BD1-Extended في DC-SITE1 و DC-SITE2.

ACI تدعم تراكب الشبكات - قى ربطات بلق افضا: 21 لكش

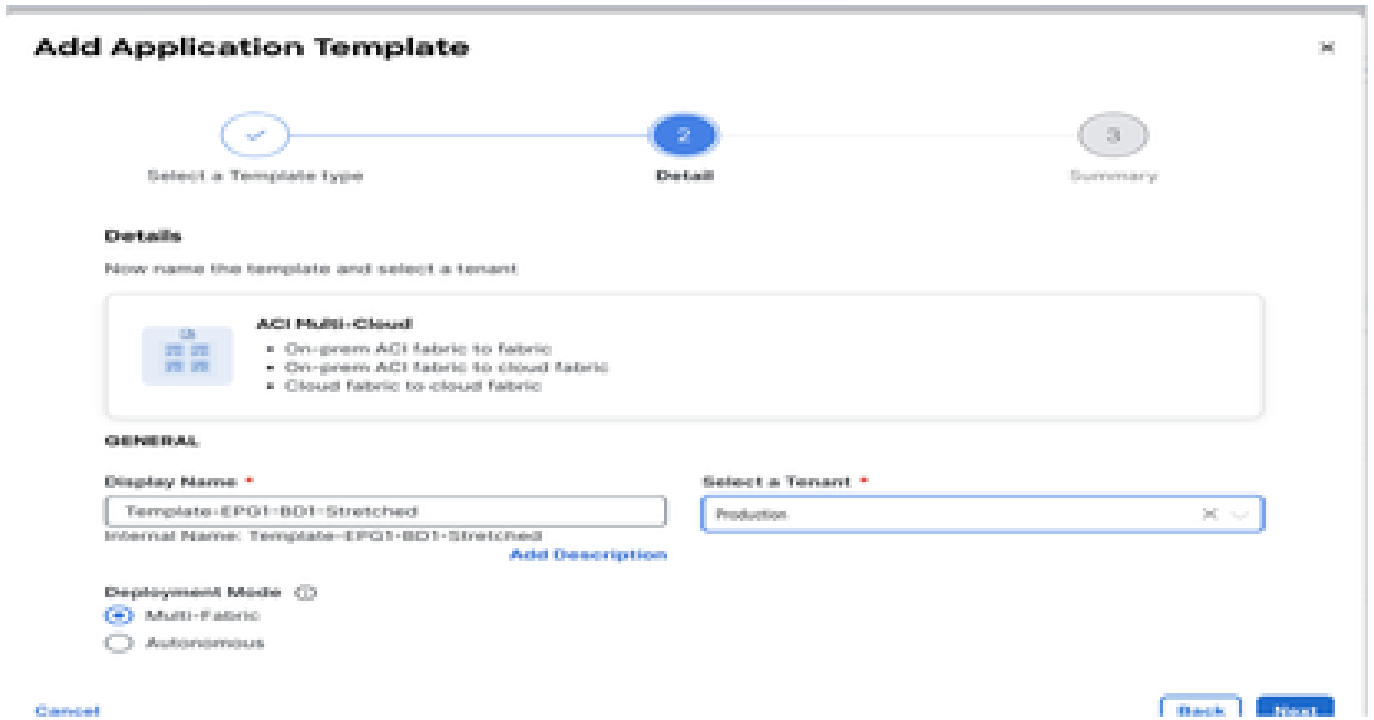
Add Application Template

1 Select a Template type **2 Detail** **3 Summary**

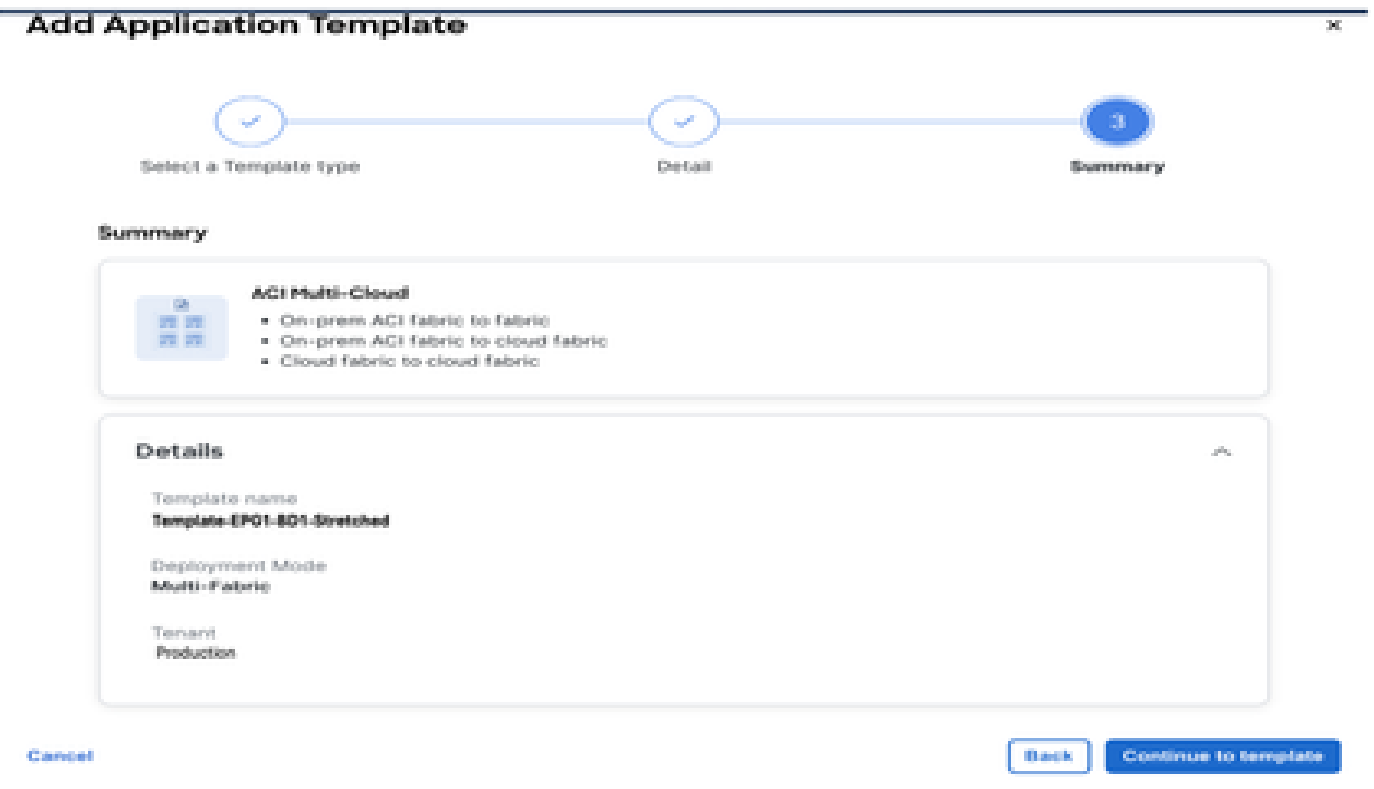
Select a Template Type
Let's choose the type of template you want to work with

- ACI Multi-Cloud**
 - On-prem ACI fabric to fabric
 - On-prem ACI fabric to cloud fabric
 - Cloud fabric to cloud fabric
- NDPC**
 - NX-OS based network
- Cloud Local**
 - Non-stretched template for cloud fabric local BGP-iPv4 connected fabric

رجأتسمل جاتنإ دح، EPG1-BD1-Extended-بلق الا مسا بلق افضا: 22 لكش



بصافه الة دتمم الة لى صافه الة: 23 لكش



Template-EPG1-BD1-Extended في EPG1-BD1 داريتسا

DC-SITE1 عقوم نم DC-BD1-Web و DC-EPG1-Web داريتسا

DC-SITE1 ددحو داريتسا لى عرقنا: 24 لكش

Manage > Tenant Templates [Application] > Schema-1

Schema-1

Refresh Audit Logs Create New Template Save Schema

View Template-EPG1-BD1-Stretched

Template Properties

Template Summary

Type: Application Tenant: Production Template Status: Unassociated Associated Fabrics: In Sync (0) Out of Sync (0) Last Action: Updated Deployment Mode: Multi-Fabric

Buttons: Edit Template, Deploy Template, Auto

IMPORT SELECT Create

DC-SITE1
DR-SITE2

DC1 عقوم نم DC-EPG1-WEB ديحت: 25 لكشلا

Import from DC-SITE1

POLICY TYPE	SELECT TO IMPORT	IMPORT RELATIONS
APPLICATION PROFILE 1 out of 2	<input checked="" type="checkbox"/> DC-EPG1-WEB 1 AP • 4 CONTRACT • 1 BD	<input checked="" type="checkbox"/>
EPG 1 out of 3	<input type="checkbox"/> DC-EPG2-WEB 1 AP • 4 CONTRACT • 1 BD	<input type="checkbox"/>
EXTERNAL EPG 0 out of 2	<input type="checkbox"/> DC-EPG-APP 1 AP • 4 CONTRACT • 1 BD	<input type="checkbox"/>

DC1 عقوم نم DC-BD1-WEB ديحت: 26 لكشلا

Import from DC-SITE1

POLICY TYPE	SELECT TO IMPORT	IMPORT RELATIONS
APPLICATION PROFILE 1 out of 2	<input checked="" type="checkbox"/> DC-BD1-WEB 1 VRF	<input checked="" type="checkbox"/>
EPG 1 out of 3	<input type="checkbox"/> DC-BD2-WEB 1 VRF	
EXTERNAL EPG 0 out of 2	<input type="checkbox"/> DC-BD-APP 1 VRF	
CONTRACT 0 out of 4		
FILTER 0 out of 4		
VRF 0 out of 2		
BD 1 out of 3		

[Import](#)

Template-EPG1-BD1-Extended في BD دادع| ريغت

اذه مدختسي. ةرابعلل IP ناوع فضأو DC-BD1 ل بيولا تادادع| في L2 دادتما نيكم تب مق DR-SITE2 و DC1 ع قوم في اهنيوكت مت يتل AnyCast ةباوبو ع قوم ل ربع BD عيسوتل بلال ل

DC-BD1-WEB في L2 ددمت دح: 27 لكش

DC-BD1-WEB [View Relationship](#)

Configuration Name: DC-BD1-WEB

Description

Annotations

Key	Value
Create Annotations	

Properties

[On-Premises Properties](#)

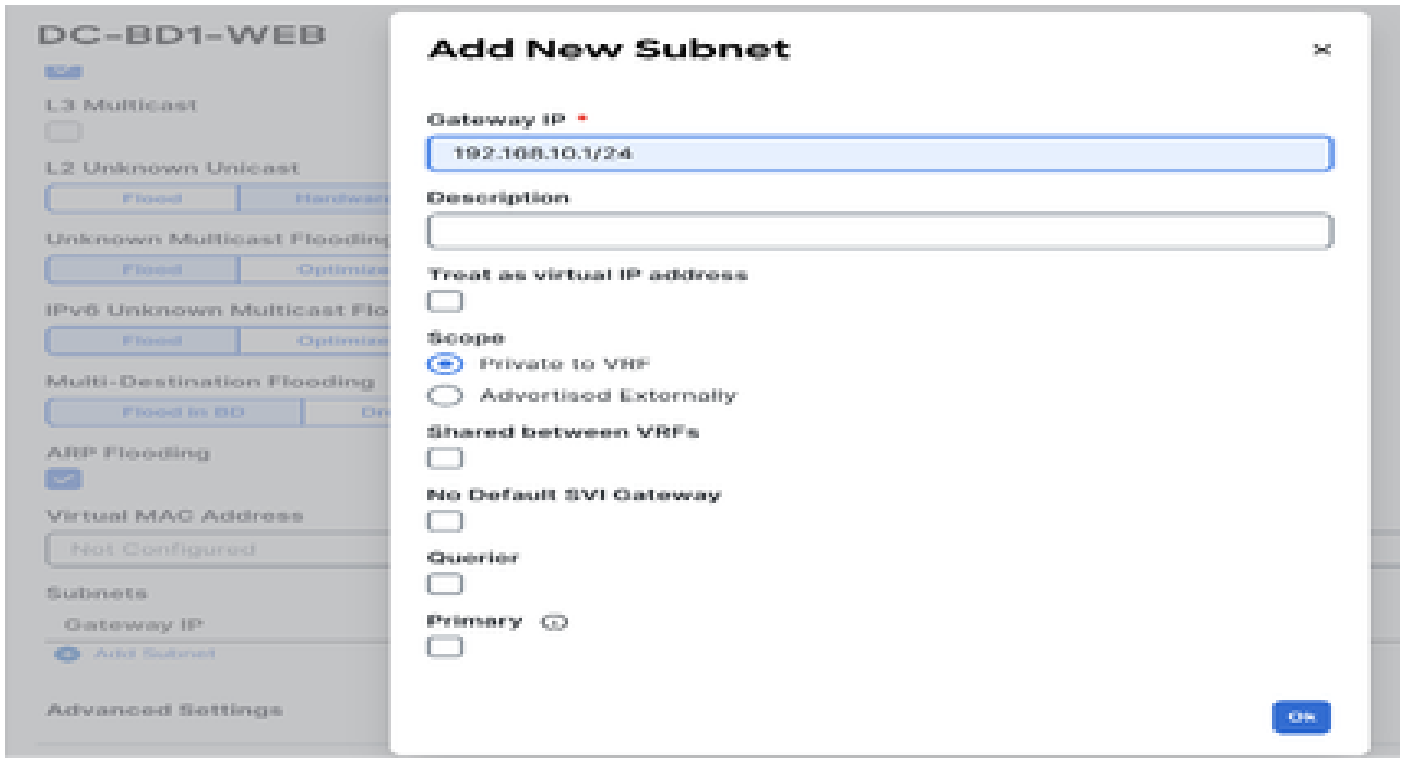
Virtual Routing & Forwarding

DC-VRF-WEB

UI Search

- Intersite BUM Traffic Allow
- Optimize WAN Bandwidth
- Unicast Routing

ةرابعلل ةيعرف/IP ةكبش ةفاض| 28 لكش



رشن EPG1-BD1-Extended-بلاق رشن

رشن قوف رقنا DC-site1 و DR-site2 ددحو Template-EPG1-BD1-Extended

رشن EPG1-BD1-Extended-بلاق رشن لى لى ن ب ةفاضل: 29 لكش



ةنمازمالا بلاوق رشن: 30 لكش

Deploy Out of Sync Templates

The following templates will be deployed in the specified order

Out of Sync Templates

Filter by attributes

Template Name	Template Type	Associated Fabrics
Template-EPG1-BD1-Stretched	Application	2

1 items found

Rows per page

5

<

1

>

Cancel

Deploy Out of Sync Templates

رشنن ل لم ت ك : 31 لكش

Schema-1 Refresh Audit Logs Create New Template Save Settings

Template Summary Edit Template Deploy Template Action

Type Application	Tenant Production	Template Status In Sync	Associated Fabrics In Sync: 2 Out of Sync: 0	Last Action Deployment Successful Last Deployed: Jan 9, 2025 09:28 pm	Deployment Mode Multi Fabric
---------------------	----------------------	----------------------------	--	---	---------------------------------

Filter Export Select Create C

Application Profile (DC)-WEB Create Application Profil

EPGs Create

DC-EPG1-WEB

Bridge Domains Create Bridge D

DC-BD1-WEB

DR-SITE2 إلى DC1 ع قوم نم DC-EP-1 ل حر ت

DR-SITE2 Physical Domain ن ارتق او DC-EPG1-WEB في DR-SITE2 في ت با ث ل ط بر ل ن ي و ك ت م ق DR-SITE2 إلى DC1 ع قوم نم DC-EP-1 ل حر ت م ق .

DC-Site1 ل ا م ل ا ب م ك ح ت ل ا د ح و ع قوم في ا ي ل ا ح ه ي ل ع ف ر ع ت ل م ت ي ذ ل ا DC-EP-1 ز ا ر ط ل : 32 لكش

Production

- Production
 - Application Profiles
 - DC-APP
 - DC-APP
 - Application EPGs
 - DC-EP01-WEB
 - Domains (VNs and Bare-Metal)
 - EPG Members
 - Static Ports
 - Port (Node-1024607)
 - Port (Node-1024607)
 - Static Leafs
 - File Channel (Paths)
 - Contracts

Summary Policy **Operational** Stats Health Faults History

Client Endpoints Configured Access Policies Contracts Controller End-Points Deployed Leafs

Healthy

MAC/IP	Endpoint Name	Learning/Hosting Server Source	Reporting/Interface Controller(learned) Name	Encap	ESG	Policy Tags
00:00:00:00:00:00 102.100.10.00		learned	Port (Node-102...	vlan-1...		
54:7F:83:83:8C:01 102.100.10.00		learned	Port (Node-102...	vlan-1...		

كش 33: DC-EP-1 تم ت يذلا DC-EP-1

Production

- Production
 - Application Profiles
 - DC-APP
 - DC-APP
 - Application EPGs
 - DC-EP01-WEB
 - Domains (VNs and Bare-Metal)
 - EPG Members
 - Static Ports
 - Port (Node-1024607)
 - Static Leafs
 - File Channel (Paths)
 - Contracts
 - Static Endpoint
 - Subnets
 - U4-U7 Virtual IPs
 - U4-U7 IP Address Pool

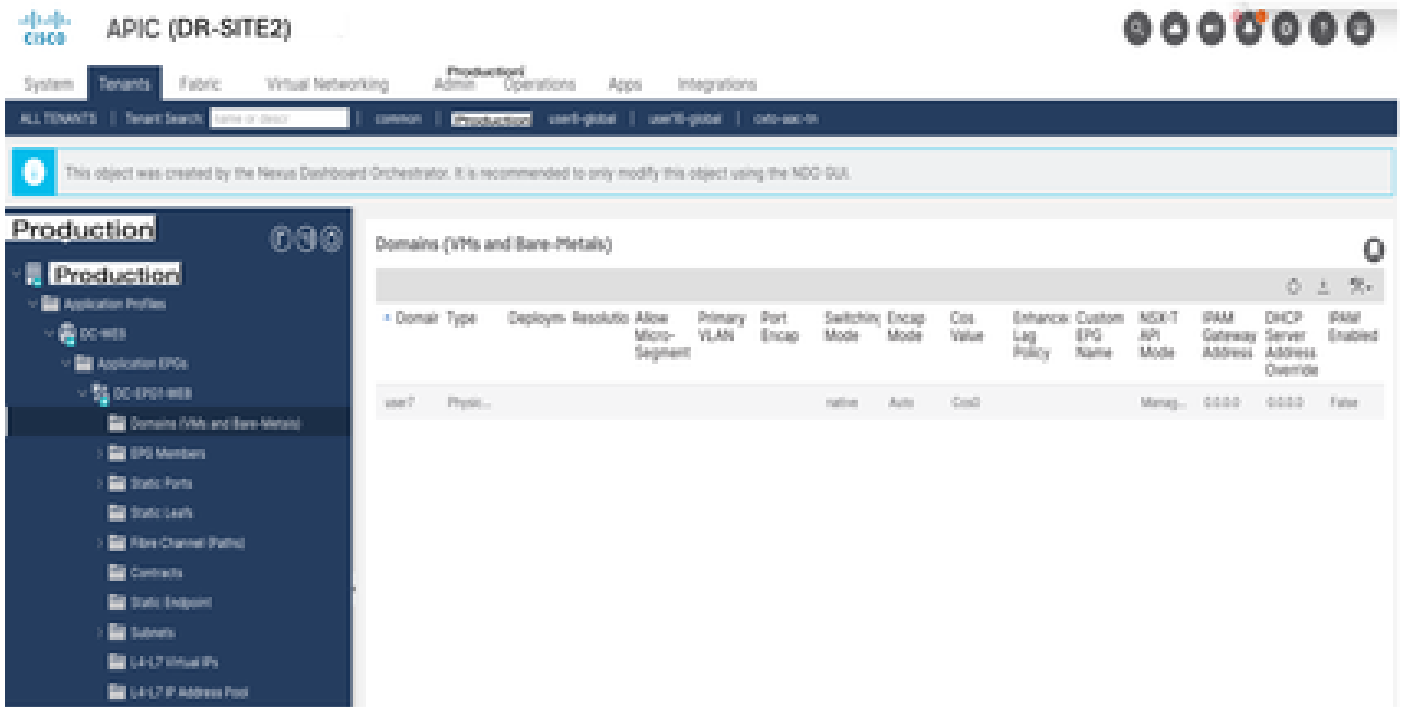
Summary Policy **Operational** Stats Health Faults History

Client Endpoints Configured Access Policies Contracts Controller End-Points Deployed Leafs

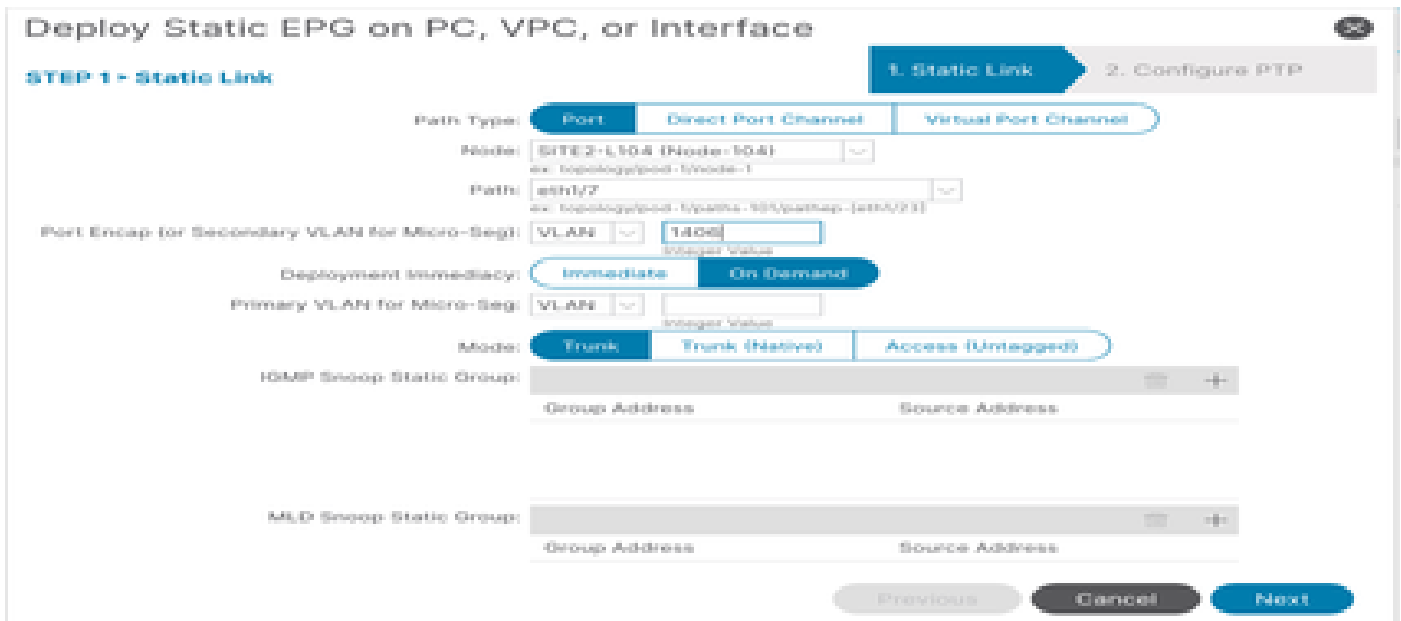
Healthy

MAC/IP	Endpoint Name	Learning/Hosting Server Source	Reporting/Interface Controller(learned) Name	Encap	ESG	Policy Tags
54:7F:83:83:8C:01 102.100.10.00		learned	Port (Node-102...	vlan-1...		

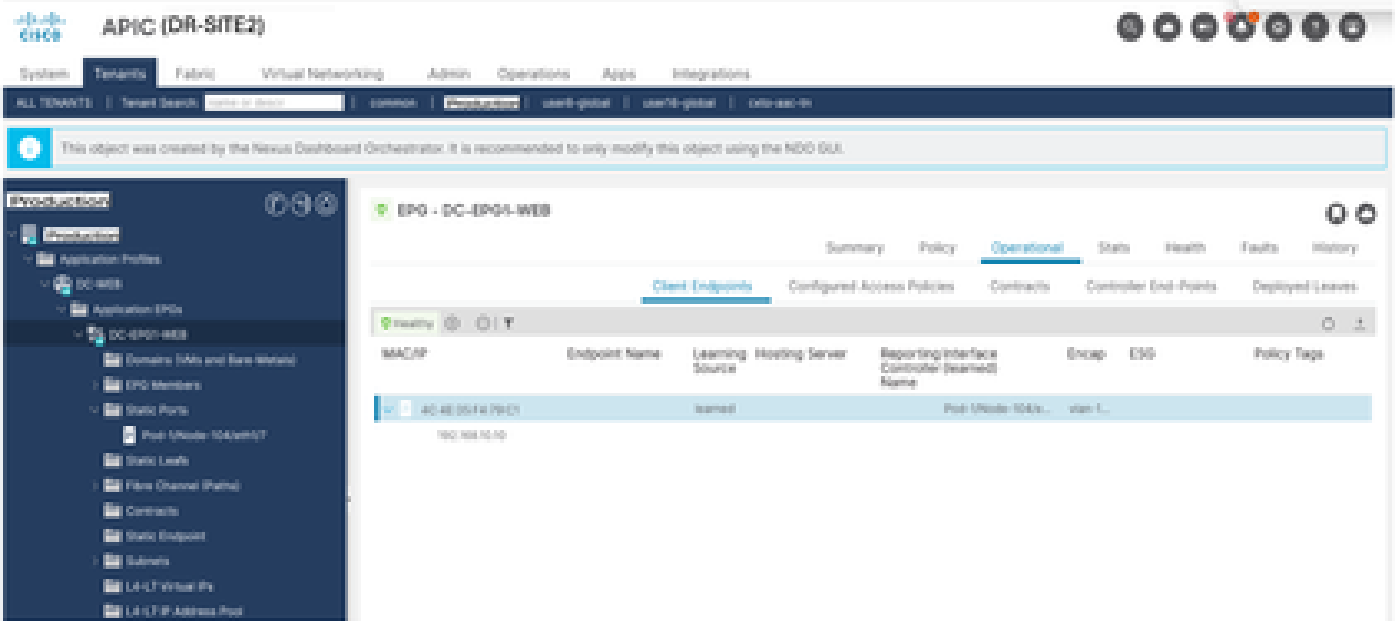
كش 34: DR-SITE2 ف ي ل ع ف ل ا ج م ة ف ا ض ا



كش 35: في تباث طبر ةفاضل: DR-SITE2



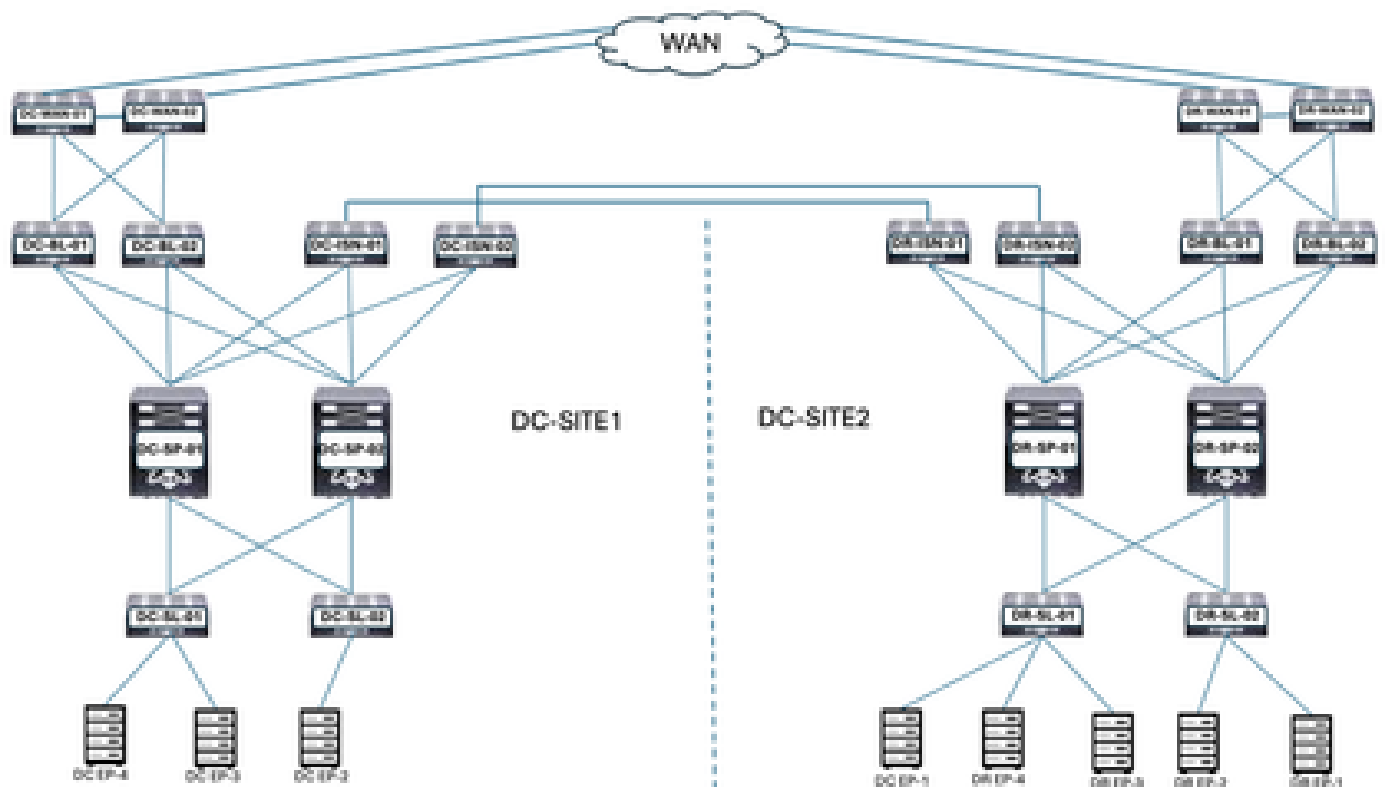
كش 36: في هم لعت مت يذل DC-EP-1 زارطل: DR-SITE2



DC-EP-1 زارطال ليجرت دع ب يدامال ميمصتال

DR-SITE2 مداخل اقرورب DC-EP-1 لصتي

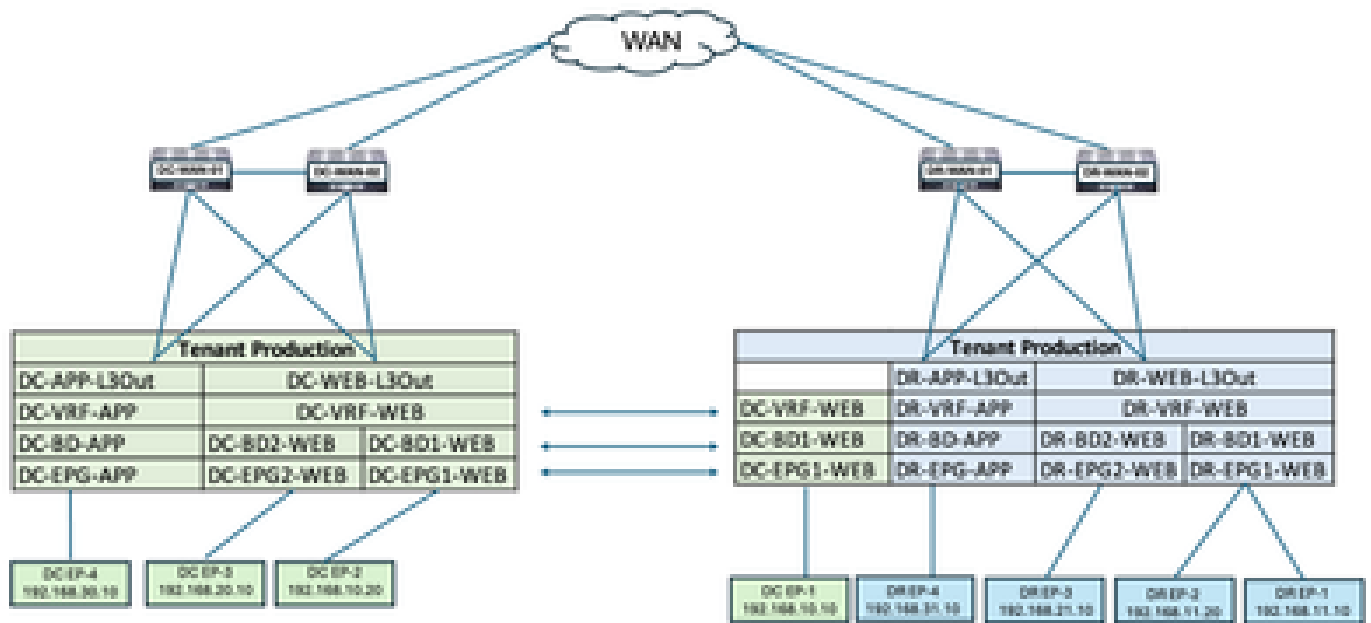
DC-EP-1 زارطال ليجرت دع ب يدامال ميمصتال: 37 لكش



DC-EP-1 زارطال ليجرت دع ب يقطنم ميمصت

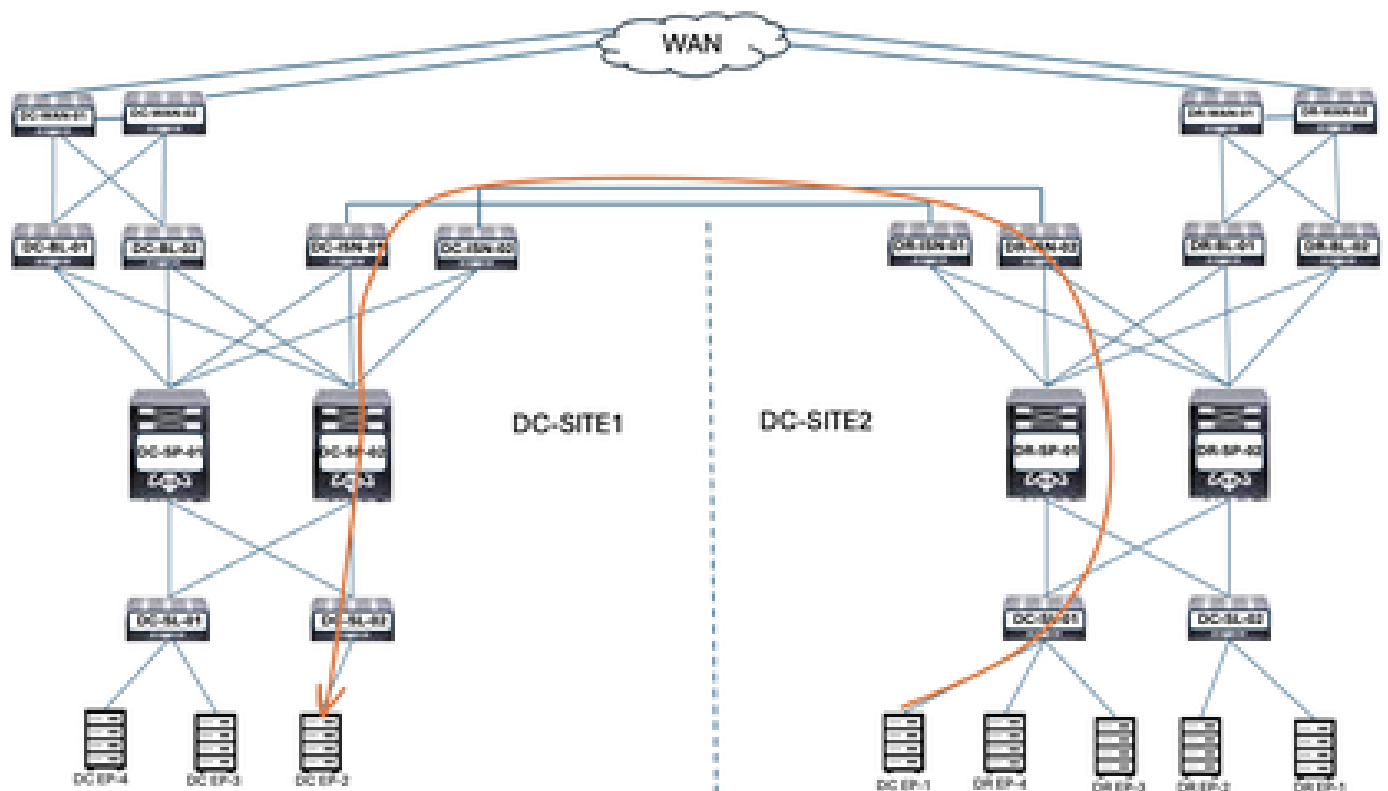
DC-EP-1 لصتي و DC-EPG1-WEB و DC-BD1-WEB و DC-VRF-WEB دي دمتم متي. DR-SITE2 مداخل اقرورب DC-EP-1 لصتي و DC1 و DR-SITE2 عقوم نبي

38 لكش DC-EP-1 زارطال ليجرت دع ب ي قطن م مي صت :



DC-EP-1 ليجرت دع ب EPG لخاد تانايب ل رورم ة كرح ق فدت

DC-EP-1 ليجرت دع ب EPG لخاد تانايب ل رورم ة كرح ق فدت : 39 لكش



يمتنت شيج ، EPG تادحو ني ب لاصتا ة باثمب DC-EP-1 و DC-EP-2 ة دحو ني ب لاصتال ربتعي لاجم ل ب مكحتال ة دحو لال خ نم لاصتال اذ شديو . DC-EPG1-Web ة كرش لى ل اهان ل اتطقن ةي عرفال تاك بشل / اعق او مال ة ددعت DR IS تا طابتر لى ل DC

DC-EP-1 و DC-EP-2 ة دحو ني ب لاصتال راب تخ ل ة باجتس ل

DC-EP-1 و DC-EP-2 ةدحو نيب لاصتالا رابتخا ةباجتسا: 40 لكش

```
# ping 192.168.10.20 source 192.168.10.10 vrf site-1
PING 192.168.10.20 (192.168.10.20) from 192.168.10.10: 56 data bytes
64 bytes from 192.168.10.20: icmp_seq=0 ttl=254 time=2.592 ms
64 bytes from 192.168.10.20: icmp_seq=1 ttl=254 time=1.931 ms
64 bytes from 192.168.10.20: icmp_seq=2 ttl=254 time=1.89 ms
64 bytes from 192.168.10.20: icmp_seq=3 ttl=254 time=2.063 ms
64 bytes from 192.168.10.20: icmp_seq=4 ttl=254 time=1.989 ms

--- 192.168.10.20 ping statistics ---
5 packets transmitted, 5 packets received, 0.00% packet loss
round-trip min/avg/max = 1.89/2.092/2.592 ms
```

ةيساسال تازيمال نم هي جوتال لودج

DR-SP-01/DR-SP-02 نم DC-SP-01/DC-SP-02 في DC-EP-1 لى فرع تال مت

ةيساسال تازيمال نم هي جوتال لودج: 41 لكش

DR-SITE2-SP-01 زارطال نم DC1-SP-01 ع قوم في DC-EP-1 زارطال لى فرع تال متي

```
DC-SITE1-SP-01# show bgp l2vpn evpn vrf overlay-1
```

```
Route Distinguisher: 1:49985577
*>e[2]:[0]:[0]:[48]:[4c4e.35f4.79c1]:[0]:[0.0.0.0]/216
      172.16.0.13                                0 65002 1
*>e[2]:[0]:[0]:[48]:[4c4e.35f4.79c1]:[32]:[192.168.10.10]/272
      172.16.0.13                                0 65002 1
```

يدخال ثبلل TEP لوكوتوربل IP لوكوتوربل DR-site2-SP-01 يطغي

```
DR-SITE2-SP-01# show ip int vrf overlay-1
```

```
lo5, Interface status: protocol-up/link-up/admin-up, iod: 86, mode: dci-ucast
IP address: 172.16.0.13, IP subnet: 172.16.0.13/32
IP broadcast address: 255.255.255.255
IP primary address route-preference: 0, tag: 0
```

ءاشنإ Template-EPG2-BD2-Site1

ءازج DC-EPG2-WEB و DC-BD2-WEB حبصي نأ درجمب DC-EP-3 و DC-EP-1 نيب لاصتالا ثدحي
نم Nexus Dashboard Orchestrator.

و Template لى DC-SITE1 ةفاضإ تم ت. Schema-1 لءاد Template-EPG2-BD2-Site1 ءاشنإ مت
بلالال اءه مدختسي. ع قوم لابل صاخ بلالال اءه. بلالال س فنب ةنرتقم ال Tenant-Production
DC-EP-1 و DC-EP-3 نيب لاصتال ال EPG2-BD2-site1 بلالال داريتسال

نم Nexus Dashboard Orchestrator ءازج DC-EPG2-BD2 نوكي نأ DC-EP-3 و DC-EP-1 لاصتال بللطتي

لاصتالا DC-EP-3 و DC-EP-1 نازارطال عي طتسي ال: 42 لكش


```
# ping 192.168.20.10 source 192.168.10.10 vrf site-1
PING 192.168.20.10 (192.168.20.10) from 192.168.10.10: 56 data bytes
Request 0 timed out
Request 1 timed out
Request 2 timed out
Request 3 timed out
Request 4 timed out

--- 192.168.20.10 ping statistics ---
5 packets transmitted, 0 packets received, 100.00% packet loss
```

ACI لةدعتم تالكبش ةومجم ديدحت - قيبت بلق ةفاضل: 43 لكش

Add Application Template

4

1 Select a Template type 2 Detail 3 Summary

Select a Template Type
Let's choose the type of template you want to work with

- ACI Multi-Cloud**
 - On-prem ACI fabric to fabric
 - On-prem ACI fabric to cloud fabric
 - Cloud fabric to cloud fabric
- NDPC**
 - ND-OS based network
- Cloud Local**
 - Non-stretched template for cloud fabric local BGP/IPv4 connected fabric

رجأت سمل جاتن إدح، EPG2-BD2-SITE1-بلق ل مس بلق ةفاضل: 44 لكش

Add Application Template

✕



Details

Now name the template and select a tenant

ACI Multi-Cloud

- On-prem ACI fabric to fabric
- On-prem ACI fabric to cloud fabric
- Cloud fabric to cloud fabric

GENERAL

Display Name *

Template-EPG2-BD2-Site1

Internal Name: Template-EPG2-BD2-Site1

[Add Description](#)

Select a Tenant *

Production

Cancel

Back

Next

Template-EPG2-BD2-Site1 لي صافت : 45 لكش

Add Application Template

✕



Summary

ACI Multi-Cloud

- On-prem ACI fabric to fabric
- On-prem ACI fabric to cloud fabric
- Cloud fabric to cloud fabric

Details

Template name
Template-EPG2-BD2-Site1

Deployment Mode
Multi-Fabric

Tenant
Production

Cancel

Back

Continue to template

template-EPG2-BD2-site1 في EPG2-BD2 داري ت سا

DC1. ع قوم نم DC-BD2-WEB و DC-EPG2-WEB داري ت سا

DC-SITE1 دحو داري ت سا | ل ع رقنا : 46 لكش

Schema-1 Refresh Audit Logs Create New Template Delete Template

View Template-EPG2-BDQ-Site1

Template Properties

Template Summary Edit Template Deploy Template Auto

Type Application	Format Production	Template Status Unassigned	Associated Fabrics <div style="text-align: center;">0 0 In Scope 0 Out of Scope</div>	Last Action Updated Last Deployed: Jan 9, 2025 09:47 pm	Deployment Mode Multi-Fabric
---------------------	----------------------	---	--	---	------------------------------------

Filter IMPORT SELECT Create

DC-SITE1
DR-SITE2

Application Prof

DC1 ع قوم نم DC-EPG2-WEB دي دحت: 47 لكشلا

Import from DC-SITE1

POLICY TYPE	SELECT TO IMPORT	IMPORT RELATIONS
APPLICATION PROFILE 1 out of 2	<input type="checkbox"/> DC-EPG1-WEB 1 AP + 4 CONTRACT + 1 BD	
EPG 1 out of 3	<input checked="" type="checkbox"/> DC-EPG2-WEB 1 AP + 4 CONTRACT + 1 BD	<input checked="" type="checkbox"/>
EXTERNAL EPG 0 out of 2	<input type="checkbox"/> DC-EPG-APP 1 AP + 4 CONTRACT + 1 BD	

DC1 ع قوم نم DC-BD2-WEB دي دحت: 48 لكشلا

Import from DC-SITE1

X

POLICY TYPE		<input type="checkbox"/> SELECT TO IMPORT	<input type="text" value=""/>	IMPORT RELATIONS
APPLICATION PROFILE	1 out of 2	<input type="checkbox"/>	DC-BD1-WEB 1 VRF	
EPG	1 out of 3	<input checked="" type="checkbox"/>	DC-BD2-WEB 1 VRF	<input type="checkbox"/>
EXTERNAL EPG	0 out of 2	<input type="checkbox"/>	DC-BD-APP 1 VRF	
CONTRACT	0 out of 4			
FILTER	0 out of 4			
VRF	0 out of 2			
BD	1 out of 3			

Import

DC-EPG2-WEB ب ط ب ت ر م ل ا د ق ع ل ا د ا ر ي ت س | م ت ي : 49 ل ك ش

DC-EPG2-WEB [View Relationship](#)

Common Properties

Display Name
Deployed name: DC-EPG2-WEB

Description

Annotations

Key	Value
Create Annotations	

Contracts

Name	Type	Actions
DC-EPG-TO-L30ut-WEB-CON	provider	
DC-EPG-TO-EPG-WEB-CON	provider	
DC-EPG-TO-L30ut-WEB-CON	consumer	
DC-EPG-TO-EPG-WEB-CON	consumer	

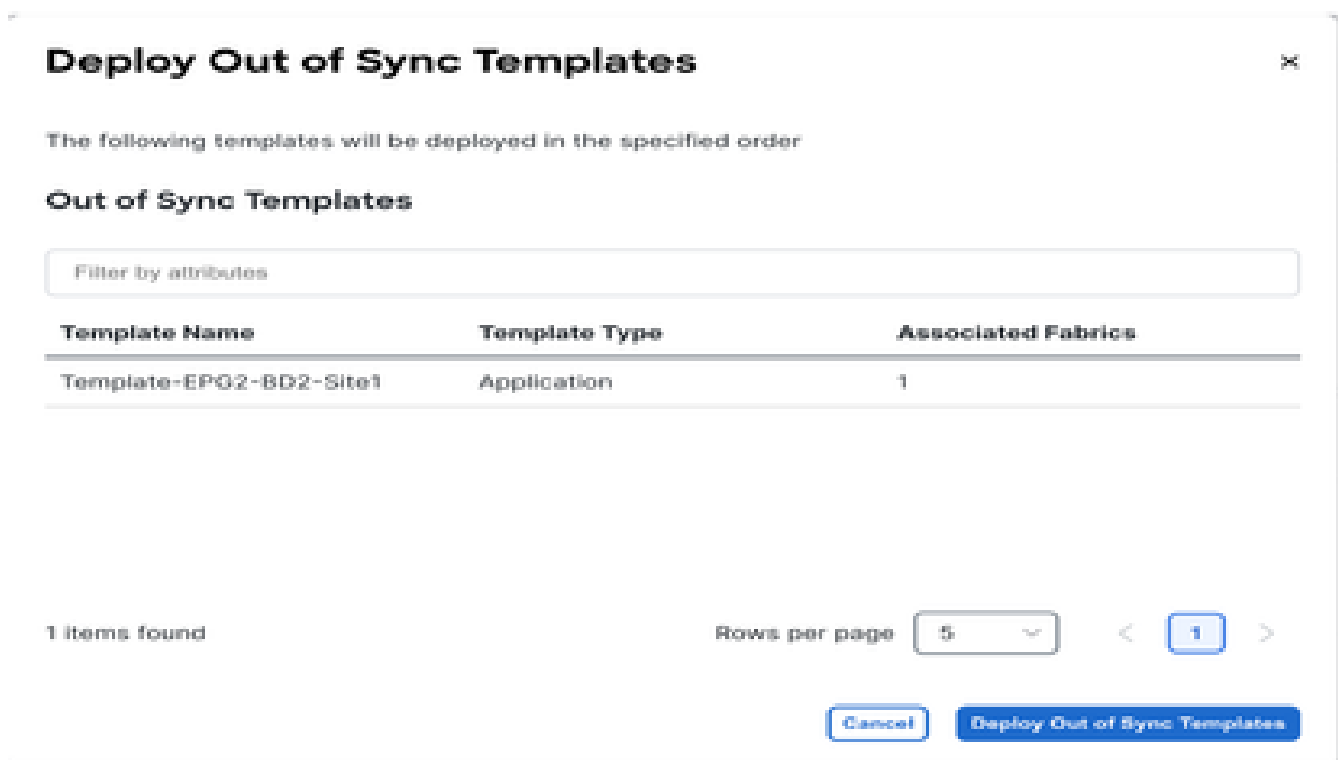
template-epg2-bd2-site1 رشن

DC-Site1 ددحو Template-EPG2-BD2-Site1 رشن ىل ع ر ق ن ا

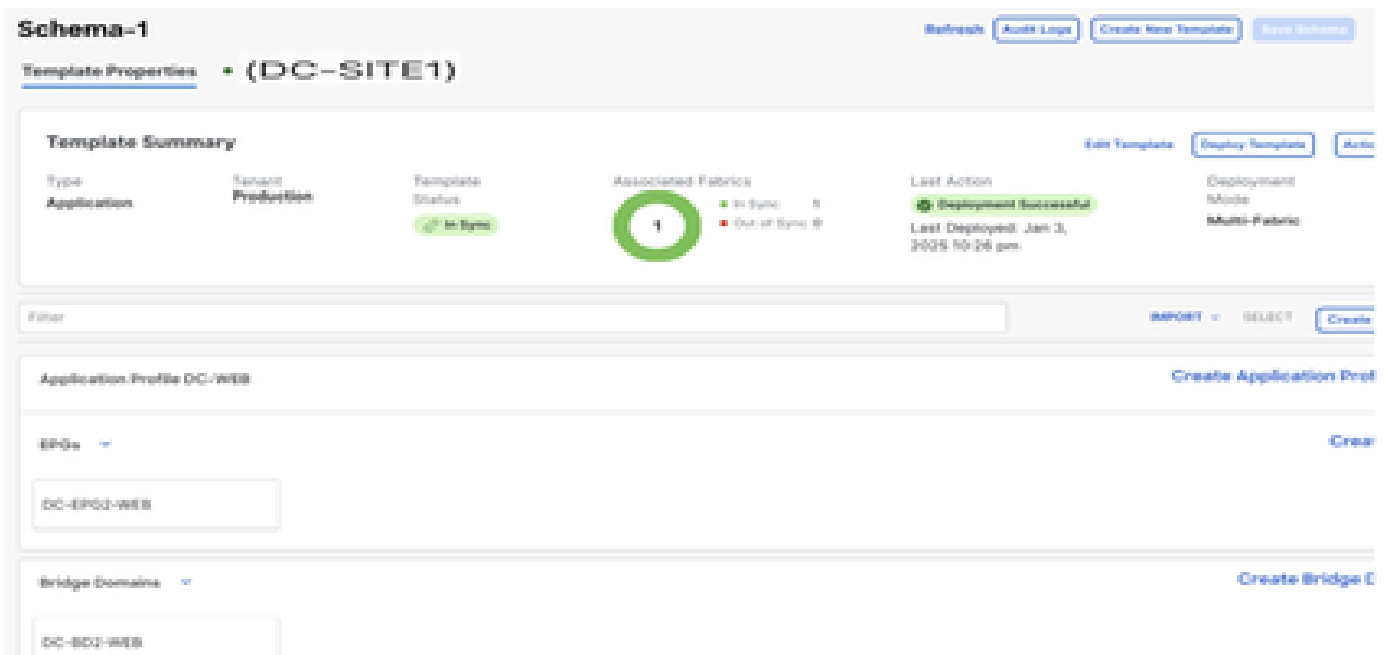
EPG2-BD2-SITE1 ىل ا ة ي ف ي ل ت ا و ن ق ة ف ا ض ا : 50 ل ك ش ل ا



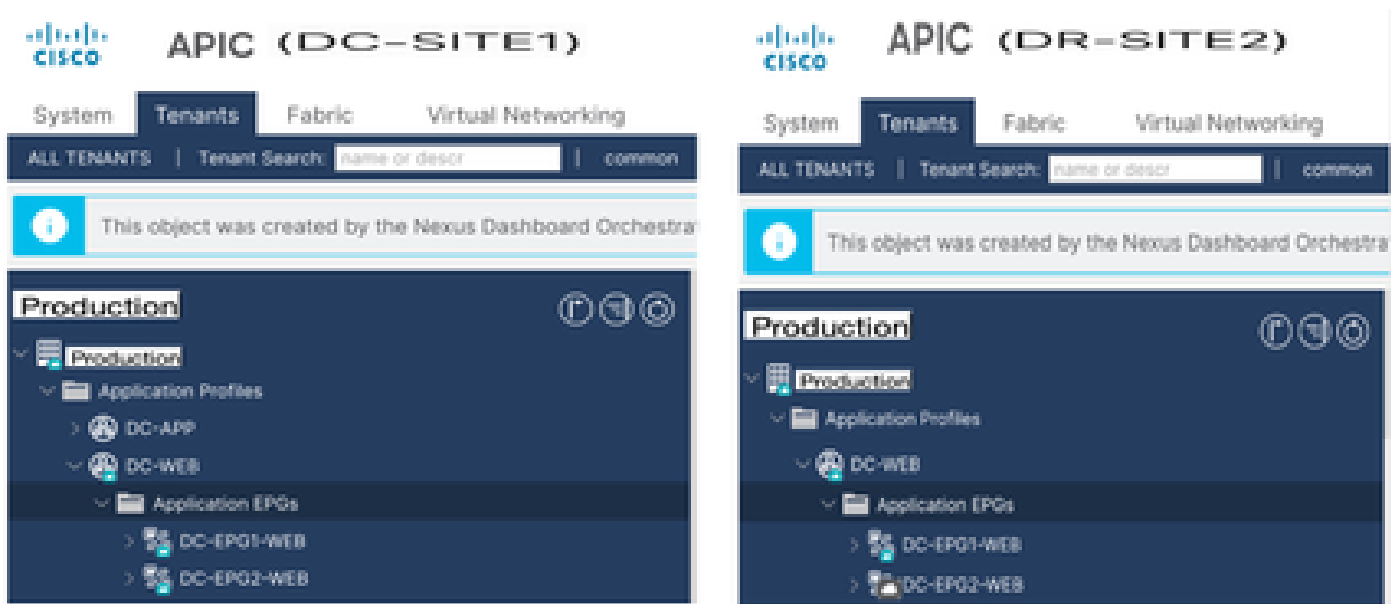
قنمازمالا بلاوق رشن :51 لكش



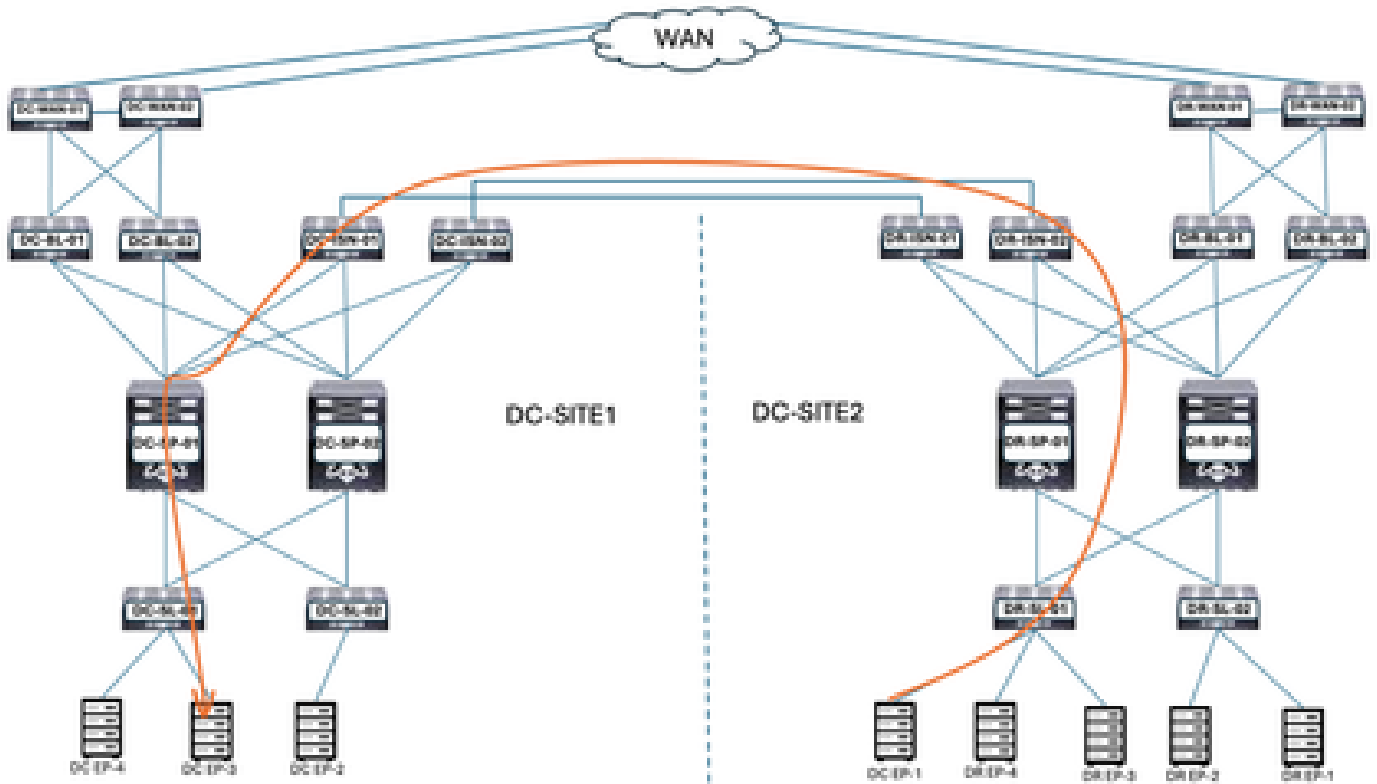
رشنلا لمتكا :52 لكش



نبي ع قووم لال ك في DC-EPG2-WEB رشن م تي: 53 لكش
 DR-Site2 في DC-EPG2-Web ل Shadow EPG ءاشن ا مت



EP-1 لي حرت دع ب EPG ني ب تانا يبال رورم ء كرح ق فدت
 EP-1 لي حرت دع ب EPG ني ب تانا يبال رورم ء كرح ق فدت: 54 لكش



اتطبقن يمتنت شح، EPG، ني ب لاصتا ةباتم ب DC-EP-3 و DC-EP-1 ني ب لاصتا ال دعي ل الخ نم لاصتا ال اذه شحوي. ي لاولتا ال ع DC-EPG2-WEB و DC-EPG1-WEB ال ايهان ال اتاكبش لالعواقوم ال ةدعتم DR IS (تاطابترا) ال DR IS ال.

DC-EP-1 و DC-EP-3 ةحو و ني ب لاصتا ال رابتخا ةباتسا

DC-EP-1 و DC-EP-3 ةحو و ني ب لاصتا ال رابتخا ةباتسا: 55 لكش

```
# ping 192.168.20.10 source 192.168.10.10 vrf site-1
PING 192.168.20.10 (192.168.20.10) from 192.168.10.10: 56 data bytes
64 bytes from 192.168.20.10: icmp_seq=0 ttl=252 time=1.498 ms
64 bytes from 192.168.20.10: icmp_seq=1 ttl=252 time=1.255 ms
64 bytes from 192.168.20.10: icmp_seq=2 ttl=252 time=1.129 ms
64 bytes from 192.168.20.10: icmp_seq=3 ttl=252 time=1.084 ms
64 bytes from 192.168.20.10: icmp_seq=4 ttl=252 time=1.537 ms

--- 192.168.20.10 ping statistics ---
5 packets transmitted, 5 packets received, 0.00% packet loss
round-trip min/avg/max = 1.084/1.3/1.537 ms
```

ءاشنإ Template-WEB-L3Out-Site1

و بلالقا ال ال DC-SITE1 ةفاضإ تم ت Schema-1 ل خاد Template-Web-L3Out-Site1 ءاشنإ مت بلالقا ال اذه مدختسا. عوقوم لابل صاخ بلالقا ال. بلالقا ال س فنب ني نرتقم ال Tenant-Production DC-EP-1. تاكبش ني ب و VRF تاكبش ني ب لاصتا ال.

ACI ل ةدعتم تاكبش ةعومجم ديحت - قيبطت بلالقا ةفاضإ: 56 لكش

Add Application Template

X



Select a Template Type

Let's choose the type of template you want to work with

- ACI Multi-Cloud**
 - On-prem ACI fabric to fabric
 - On-prem ACI fabric to cloud fabric
 - Cloud fabric to cloud fabric
- NDPC**
 - NX-OS based network
- Cloud Local**
 - Non-stretched template for cloud fabric local BGP-IPv4 connected fabric

رجأت سمل اجاتن دح ، 1- WEB-L3Out-Site-بلاق ال مسا بلاق ةفاض : 57 لكشلا

Add Application Template

X



Details

Now name the template and select a tenant

- ACI Multi-Cloud**
 - On-prem ACI fabric to fabric
 - On-prem ACI fabric to cloud fabric
 - Cloud fabric to cloud fabric

GENERAL

Display Name *

Template-WEB-L3Out-Site1

Internal Name: Template-WEB-L3Out-Site1

[Add Description](#)

Select a Tenant *

Production

Cancel

Back

Next

58 لكشلا Template-WEB-L3Out-Site1 لي صافات

Add Application Template

The image shows a three-step process for adding an application template. Step 1 is 'Select a Template type', Step 2 is 'Detail', and Step 3 is 'Summary'. The 'Summary' section is active and displays the following information:

- ACI Multi-Cloud**
 - On-prem ACI fabric to fabric
 - On-prem ACI fabric to cloud fabric
 - Cloud fabric to cloud fabric
- Details**
 - Template name: **Template-WEB-L3Out-Site1**
 - Deployment Mode: **Multi-Fabric**
 - Tenant: **Production**

At the bottom, there are buttons for 'Cancel', 'Back', and 'Continue to template'.

Template-WEB-L3Out-Site1 في L3Out و يجرخال ال EPG داريت سا

Template-WEB-L3Out-Site1 في L3Out و يجرخال ال EPG داريت سا

DC-SITE1 دحو داريت سا لى ع رقنا : 59 لكش

The image shows the 'Schema-1' interface for managing application templates. It includes a 'Template Properties' section with the following details:

- Template Summary**
 - Type: Application
 - Tenant: Production
 - Template Status: Unassociated
 - Associated Fabrics: 0 (0 In Sync, 0 Out of Sync)
 - Last Action: Updated
 - Deployment Mode: Multi-Fabric

Buttons for 'Refresh', 'Audit Logs', 'Create New Template', and 'Save Schema' are visible at the top. At the bottom, there is an 'IMPORT - SELECT' button and a 'Create' button. A callout box highlights 'DC-SITE1' and 'DR-SITE2'.

DC1 ع قوم نم EXT-APP-EPG ديحت: 60 لكش

Import from DC-SITE1



X

POLICY TYPE	SELECT TO IMPORT	IMPORT RELATIONS
APPLICATION PROFILE 0 out of 2	EXT-APP-EPG <input type="checkbox"/> ⚠ DC-APP-L3OUT 2 CONTRACT • 1 VRF • 1 L3OUT	
EPG 0 out of 3	EXT-WEB-EPG <input checked="" type="checkbox"/> ⚠ DC-WEB-L3OUT 2 CONTRACT • 1 VRF • 1 L3OUT	<input checked="" type="checkbox"/>
EXTERNAL EPG 1 out of 2		

61 ل ك ش ل ا DC-SITE1 ن م DC-APP-L3Out دي د ح ت :

Import from DC-SITE1

X

APPLICATION PROFILE	0 out of 2	i L3Out import into Application Template will only import empty L3Out container and not complete config.	
EPG	0 out of 3	<input type="checkbox"/>  DC-APP-L3Out 1 VRF	
EXTERNAL EPG	1 out of 2	<input checked="" type="checkbox"/>  DC-WEB-L3Out 1 VRF	<input type="checkbox"/>
CONTRACT	0 out of 4		
FILTER	0 out of 4		
VRF	0 out of 2		
BD	0 out of 3		
L3OUT	1 out of 2		

EXT-WEB-EPG ب نرتقم لال دقعلال داريت سا متي : 62 لكش لال

ةق ب طم DC دوقع ب DR-SITE2 في هؤاشن ا مت يذال EXT-WEB-EPG لظ

EXT-WEB-EPG

[View Relationship](#)

Virtual Routing & Forwarding 

DC-VRF-WEB

Contracts

Name

DC-EPG-TO-L3Out-WEB-CON

Type: provider

DC-EPG-TO-L3Out-WEB-CON

Type: consumer

[Add Contract](#)

Select Fabric Type 

ON-PREM

CLOUD

On-Premises Properties

L3Out

DC-WEB-L3Out

Subnets

Prefix/Prefix Length

0.0.0.0/0

[Add Subnet](#)

OK

1-site-Web-L3Out-بلاق رشن

1-site-Web-L3Out-Template رشن قوف رقنا DC-SITE1 ددحو

1-site-Web-L3Out-Template رشن قوف رقنا: 63 لكشلا

Add Fabrics To Template-WEB-L3Out-Site1

X

Name

DC-SITE1
LOCK

DR-SITE2
LOCK

OK

ةنمازمل بلواق رشن :64 لكش

Deploy Out of Sync Templates



The following templates will be deployed in the specified order

Out of Sync Templates

Template Name	Template Type	Associated Fabrics
Template-WEB-L3Out-Site1	Application	1

1 items found

Rows per page 5 < 1 >

Cancel Deploy Out of Sync Templates

رشنل لم تك :65 لكش

Schema-1

Refresh Audit Logs Create New Template Save Schema

View Template-WEB-L3Out-Site1

Template Properties COX-ARAD-LAB-SITE1

Template Summary

Type Application	Tenant Production	Template Status In Sync	Associated Fabrics 1	Last Action Deployment Successful	Deployment Mode Multi-Fabric
---------------------	----------------------	---	--------------------------------------	---	---------------------------------

Filter IMPORT - SELECT Create

External EPGs

EXT-WEB-EPG Create External

L3Outs

DC-WEB-L3Out Create

DR ل DC-VRF-WEB مداخل ةقروفي تاهجومال نم ققحتال

DR ل DC-VRF-WEB مداخل ةقروفي ةتبتالم ةتباتال تاراسمل.

DR ل DC-VRF-WEB مداخل ةقروفي تاهجومال نم ققحتال :66 لكش

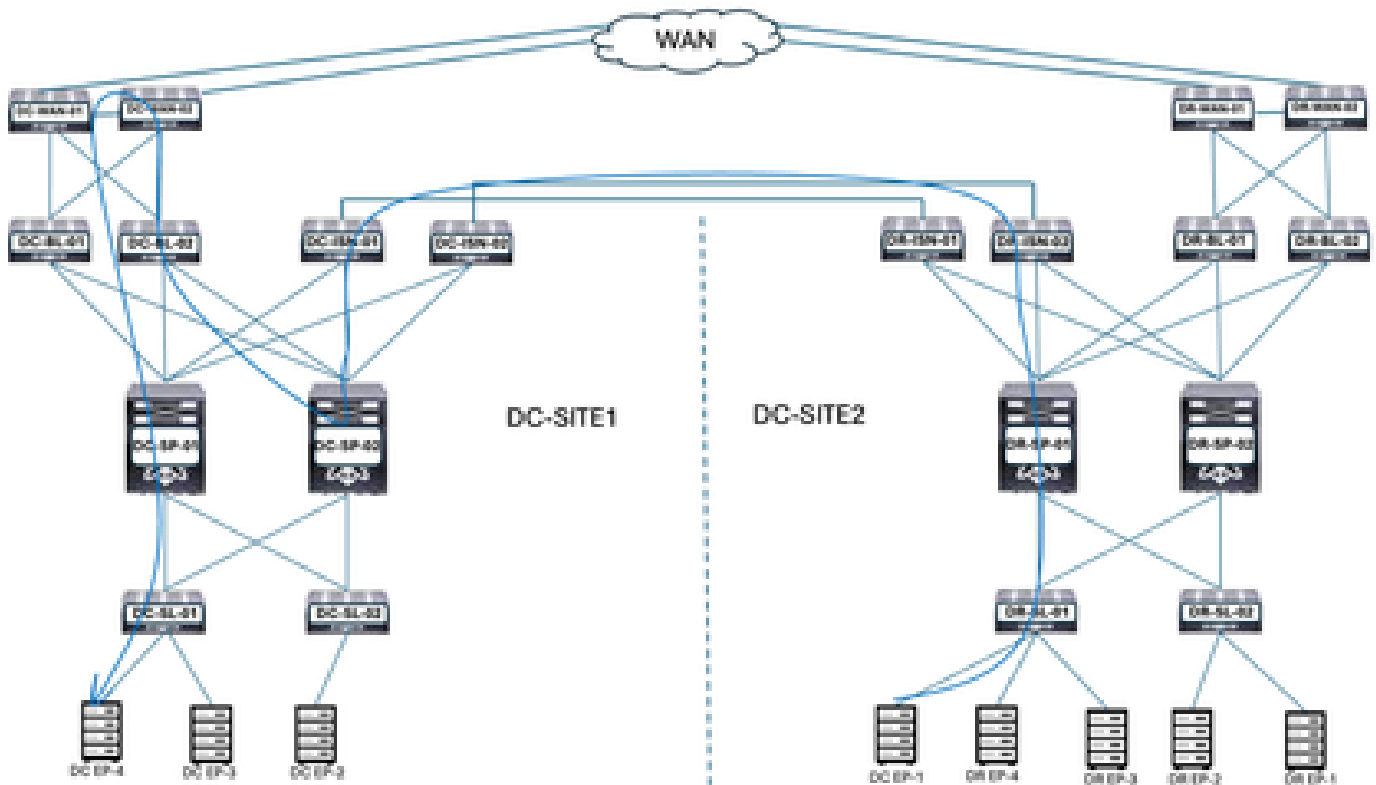
```

DR-SL-01# show ip route vrf Production:DC-VRF-WEB
IP Route Table for VRF "Production:DC-VRF-WEB"
'*' denotes best ucast next-hop
 '**' denotes best mcast next-hop
 '[x/y]' denotes [preference/metric]
 '%<string>' in via output denotes VRF <string>

0.0.0.0/0, ubest/mbest: 1/0
 *via 172.16.1.232%overlay-1, [200/0], 00:04:41, bgp-65002, internal, tag 65001, rvid: vxlan-2883589

```

DC-EP-1 ليحرت دعب (VRF) يكلساللا ددرتلا نيبتا نايبلا رورم ةكرح قفدت
DC-EP-1 ليحرت دعب (VRF) يكلساللا ددرتلا نيبتا نايبلا رورم ةكرح قفدت: 67 لكش



ةكرح قفدتت DC-EP-4 زارطلاب لاصتاللا DC-WEB-L3Out ةينقت DC-EP-1 زارطالا مدختسي
DC-SP-01/DC-SP-02 نمو، عقاوملا ةدعتم DC-ISP تااطابترا لىل DR-ISP تااطابترا نم رورملا
DC-SP لىل DC-BL. ةكرح DC-BL-01/DC-BL-02 لسري DC-BL. تااطابترا لىل DC-EP-1 زارطالا
VRF تاكش نيبتا نايبلا رورملا ةكرح قفدتت.

DC-EP-1 و DC-EP-4 ةدحو نيبتا لاصتالا رابختا ةباجتسا

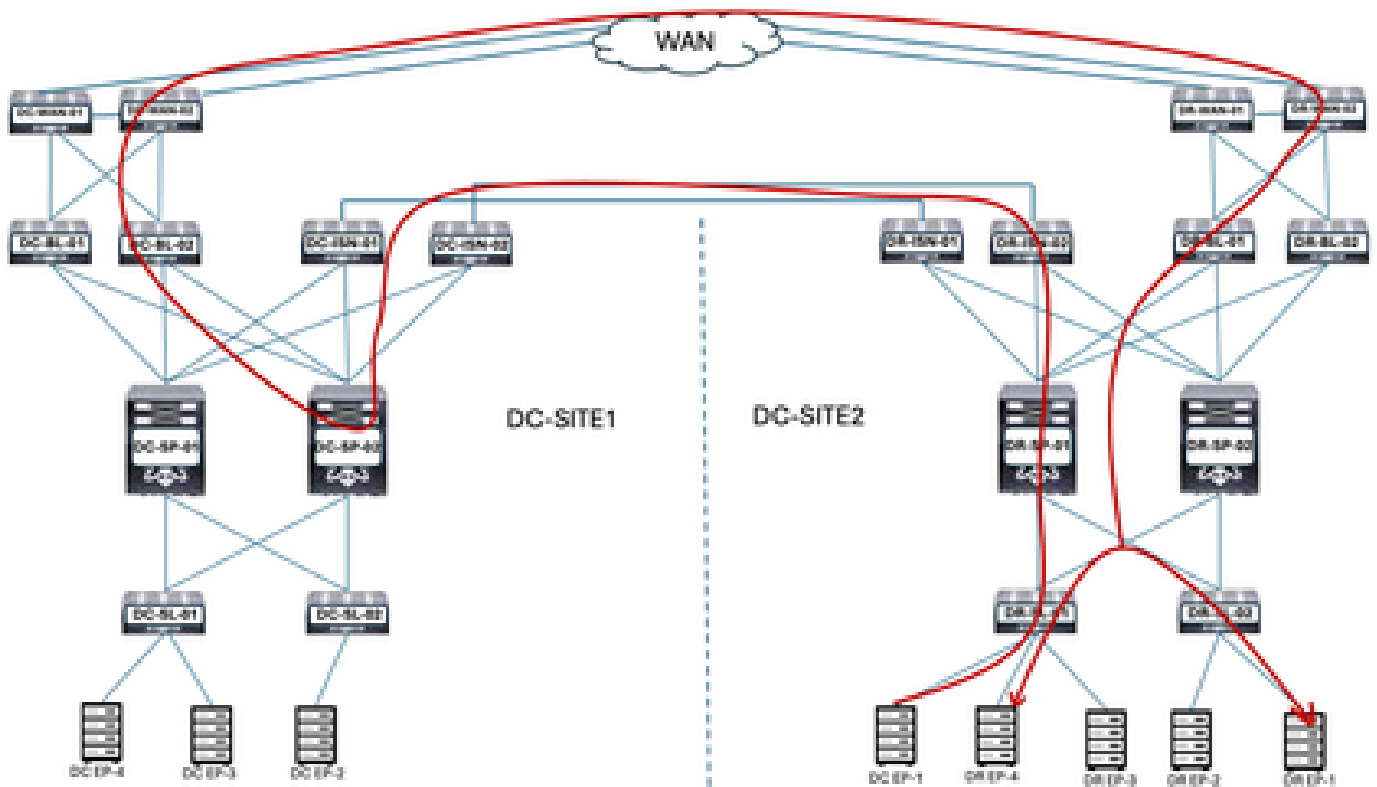
DC-EP-1 و DC-EP-4 ةدحو نيبتا لاصتالا رابختا ةباجتسا: 68 لكش

```
# ping 192.168.30.10 source 192.168.10.10 vrf site-1
PING 192.168.30.10 (192.168.30.10) from 192.168.10.10: 56 data bytes
64 bytes from 192.168.30.10: icmp_seq=0 ttl=249 time=1.781 ms
64 bytes from 192.168.30.10: icmp_seq=1 ttl=249 time=2.617 ms
64 bytes from 192.168.30.10: icmp_seq=2 ttl=249 time=1.288 ms
64 bytes from 192.168.30.10: icmp_seq=3 ttl=249 time=1.116 ms
64 bytes from 192.168.30.10: icmp_seq=4 ttl=249 time=1.135 ms

--- 192.168.30.10 ping statistics ---
5 packets transmitted, 5 packets received, 0.00% packet loss
round-trip min/avg/max = 1.116/1.587/2.617 ms
SITE2-EP1#
```

DC-EP-1 ليحرت دعب رمتسمال رايتال ني ب رورمال ةكح قفدت

DC-EP-1 ليحرت دعب رمتسمال رايتال ني ب رورمال ةكح قفدت: 69 لكش



جم دل اب ةصاخلا ةياهنلا طاقن ب لاصتال ل DC-WEB-L3Out ةينقت DC-EP-1 زارطال مدختسي ةدعتم DC-IS تاطابترا لى ل DR-ISN تاطابترا نم رورمال ةكح قفدت . تانايبال زكارم ني ب DC-BL زارطال لسري . DC-BL لى ل DC-SP ةكح قفدت . DC-SP نم لى ل DC-IS تال صوو ، ةقاولم ل DR. ةياهنلا طاقن ل DC-WAN تال وحم لى ل تانايبال رورمال ةكح قفدت DC-BL-01/DC-BL-02.

DR-EP تاموسرلا ةجلعام ةدحوو DC-EP-1 ةدحو ني ب لاصتال رابتخا متي

DR-EP تاموسرلا ةجلعام ةدحوو DC-EP-1 ةدحو ني ب لاصتال رابتخا متي: 70 لكش

```

SITE-EP1# ping 192.168.11.10 source 192.168.10.10 vrf site-1
PING 192.168.11.10 (192.168.11.10) from 192.168.10.10: 56 data bytes
Request 0 timed out
64 bytes from 192.168.11.10: icmp_seq=1 ttl=249 time=2.245 ms
64 bytes from 192.168.11.10: icmp_seq=2 ttl=249 time=1.893 ms
64 bytes from 192.168.11.10: icmp_seq=3 ttl=249 time=1.725 ms
64 bytes from 192.168.11.10: icmp_seq=4 ttl=249 time=1.991 ms

--- 192.168.11.10 ping statistics ---
5 packets transmitted, 4 packets received, 20.00% packet loss
round-trip min/avg/max = 1.725/1.908/2.245 ms
SITE-EP1#
SITE-EP1# ping 192.168.11.20 source 192.168.10.10 vrf site-1
PING 192.168.11.20 (192.168.11.20) from 192.168.10.10: 56 data bytes
Request 0 timed out
64 bytes from 192.168.11.20: icmp_seq=1 ttl=249 time=1.714 ms
64 bytes from 192.168.11.20: icmp_seq=2 ttl=249 time=1.693 ms
64 bytes from 192.168.11.20: icmp_seq=3 ttl=249 time=1.245 ms
64 bytes from 192.168.11.20: icmp_seq=4 ttl=249 time=1.262 ms

--- 192.168.11.20 ping statistics ---
5 packets transmitted, 4 packets received, 20.00% packet loss
round-trip min/avg/max = 1.693/1.313/1.714 ms
SITE-EP1#
SITE-EP1# ping 192.168.31.10 source 192.168.10.10 vrf site-1
PING 192.168.31.10 (192.168.31.10) from 192.168.10.10: 56 data bytes
64 bytes from 192.168.31.10: icmp_seq=0 ttl=249 time=1.554 ms
64 bytes from 192.168.31.10: icmp_seq=1 ttl=249 time=1.163 ms
64 bytes from 192.168.31.10: icmp_seq=2 ttl=249 time=1.178 ms
64 bytes from 192.168.31.10: icmp_seq=3 ttl=249 time=1.255 ms
64 bytes from 192.168.31.10: icmp_seq=4 ttl=249 time=1.261 ms

--- 192.168.31.10 ping statistics ---
5 packets transmitted, 5 packets received, 0.00% packet loss
round-trip min/avg/max = 1.163/1.262/1.554 ms
SITE-EP1#
SITE-EP1# ping 192.168.31.10 source 192.168.10.10 vrf site-1
PING 192.168.31.10 (192.168.31.10) from 192.168.10.10: 56 data bytes
64 bytes from 192.168.31.10: icmp_seq=0 ttl=249 time=1.51 ms
64 bytes from 192.168.31.10: icmp_seq=1 ttl=249 time=1.31 ms
64 bytes from 192.168.31.10: icmp_seq=2 ttl=249 time=1.263 ms
64 bytes from 192.168.31.10: icmp_seq=3 ttl=249 time=1.278 ms
64 bytes from 192.168.31.10: icmp_seq=4 ttl=249 time=1.247 ms

--- 192.168.31.10 ping statistics ---
5 packets transmitted, 5 packets received, 0.00% packet loss
round-trip min/avg/max = 1.247/1.321/1.51 ms

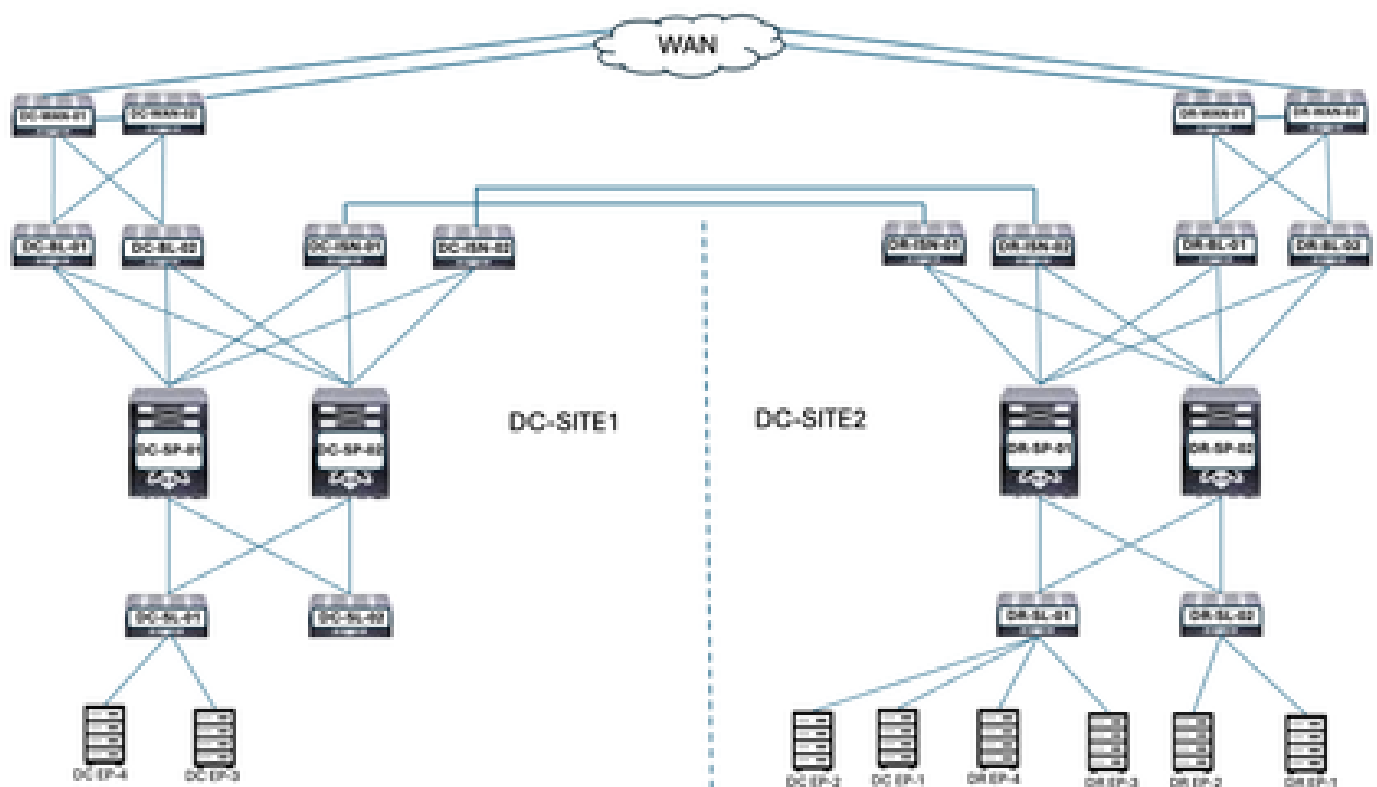
```

ةيقبتم الة اهانل طاقن لىحرت

ةيقبتم الة اهانل طاقن لىحرت دعب يدامل ميمصتال

طاطم ال رىغتم، DR DC-EPG1-WEB لى DC نم ةيقبتم الة اهانل طاقن لىحرت دعب
لكلذل اقوف لىلعلال

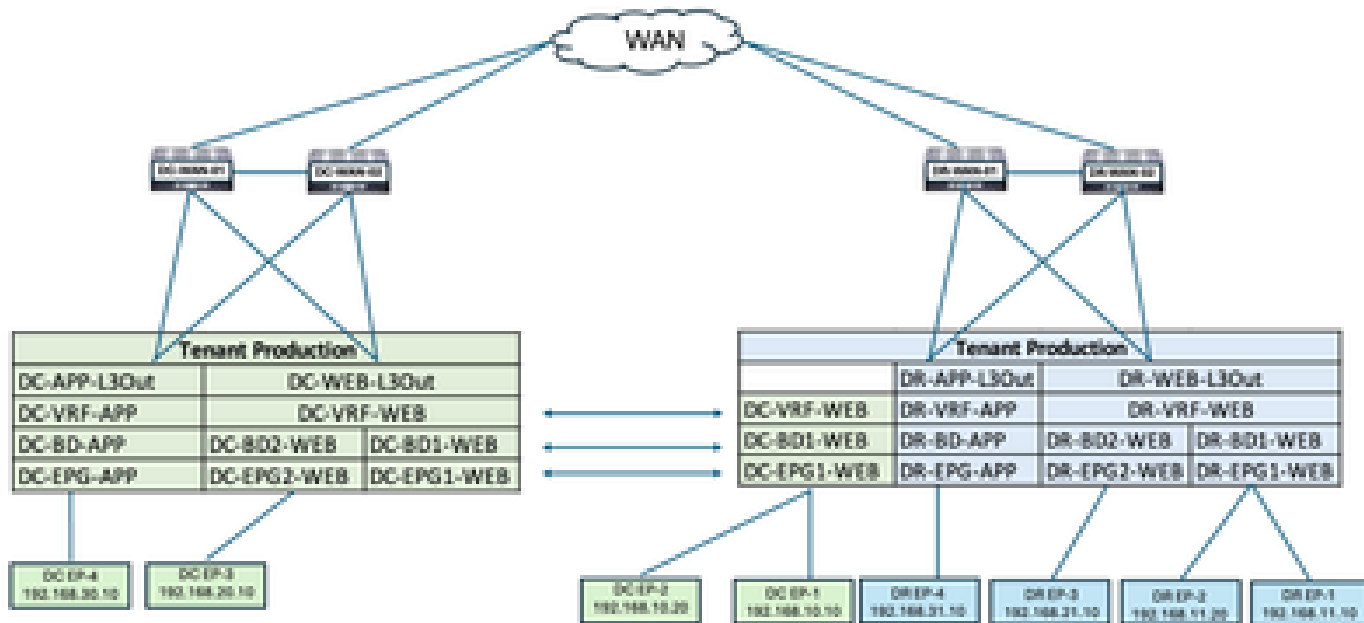
DR لى DC نم ة اهانل طاقن لىحرت دعب لىلعلال ميمصتال: 71 لكش



ةيقبتمال ةياهنللا طاقن ليجرت دعب يقطنم ميمصت

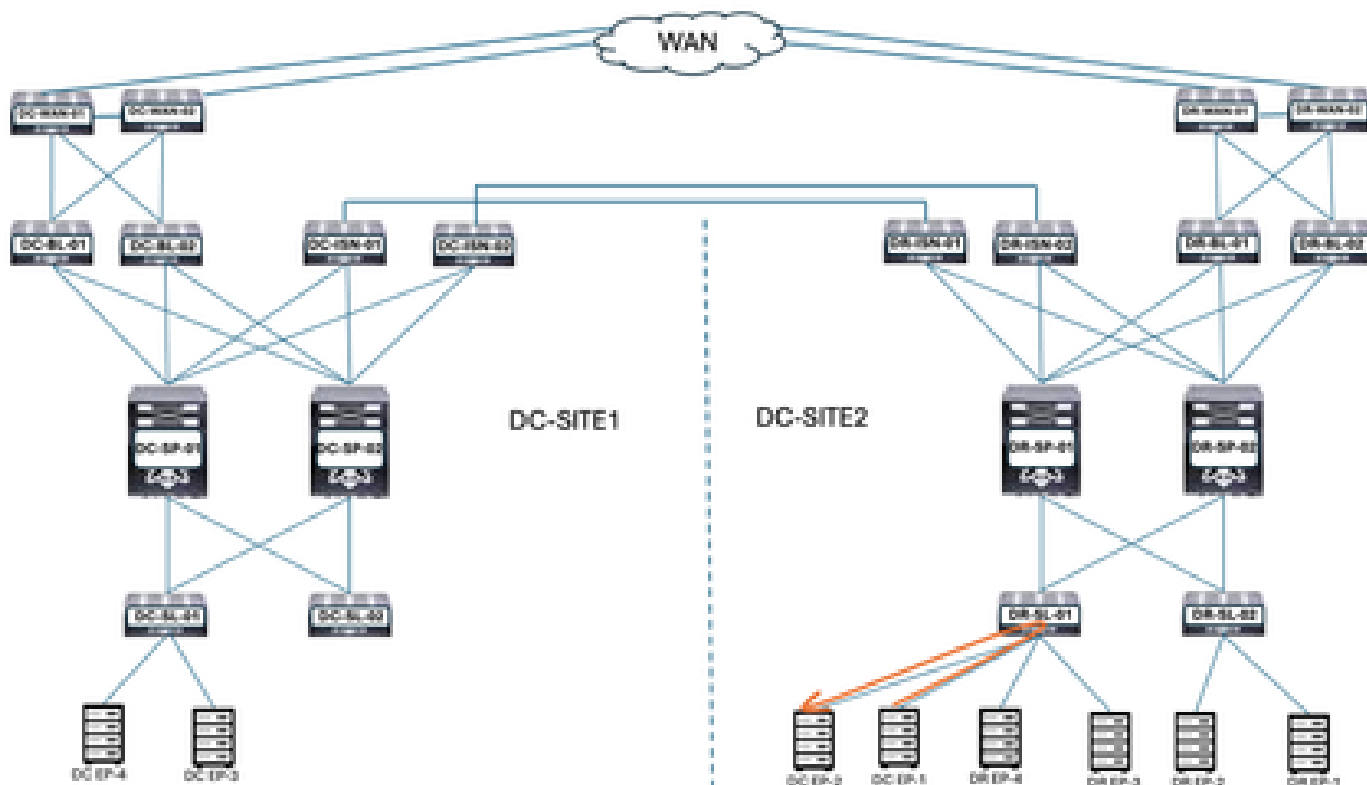
لعفلاب ةدتمم تاكبش يه DC-EPG1-WEB و DC-BD1-WEB و DC-VRF-WEB بيولا ةكبش DR. عقوم لىل DC نم اهليجرت مت يتللا DC ل ةيقبتمال ةياهنللا طاقن. DC و DR. عقاوم ني

ةياهنللا ةطقن ليجرت دعب يقطنم ميمصت: 72 لكش



ةيقبتمال ةياهنللا ةطقن ليجرت دعب Intra EPG رورم ةكح قفدت

ةيقبتمال ةياهنللا ةطقن ليجرت دعب Intra EPG رورم ةكح قفدت: 73 لكش



يتم تنصيب EPG، وإعدادات DR، وإعدادات DC-EP-1 و DC-EP-2 في الواجهة DC-EPG1-WEB. DR. إعدادات DR.

DC-EP-1 ليحترق لثامم DC و VRF و EPG في رورم الكرح تاقفدت لازت ال

DC لاجمباب م كحتلا ةدحو عقوم نم ةدتمم ال EPG1-BD1-بلاق الرشن اغل

ر فوتم زلي ال DC-EPG1-WEB ل DC عقوم ال DC عقوم نم ةياهنل طاقن عي مج ليحترق م تي DC-EPG1-WEB و DC-BD1-WEB في DC عقوم ال. اغل. DC. EPG و BD نم Site-1. DC عقوم

رشن ال اغل بلاق قوف رونا: 74 لكش

Schema-1 [Refresh](#) [Audit Logs](#) [Create New Template](#) [Save Schema](#)

View **Template-EPG1-BD1-Stretched** ▾

Template Properties ▾ **DC-SITE1** ▾ **DR-SITE2**

Template Summary

Type	Tenant	Template Status	Associated Fabrics	Last Action
Application	Production	In Sync	2 In Sync, 0 Out of Sync	Deployment Last Deployed: 2025-05-07 pm

Filter

Application Profile (DC-WEB)

EPGs ▾

DC-EPG1-WEB

Bridge Domains ▾ [Create Bridge E](#)

- Add/Remove Fabrics
- Disassociate Fabric
- Clone Template
- Undeploy Template
- Delete Template ⚠
- View Deployed Configuration
- View Deployment Dependencies
- View Deployment Plan
- Reconcile Configuration Drifts
- View Version History
- Roll Back Version
- Tag

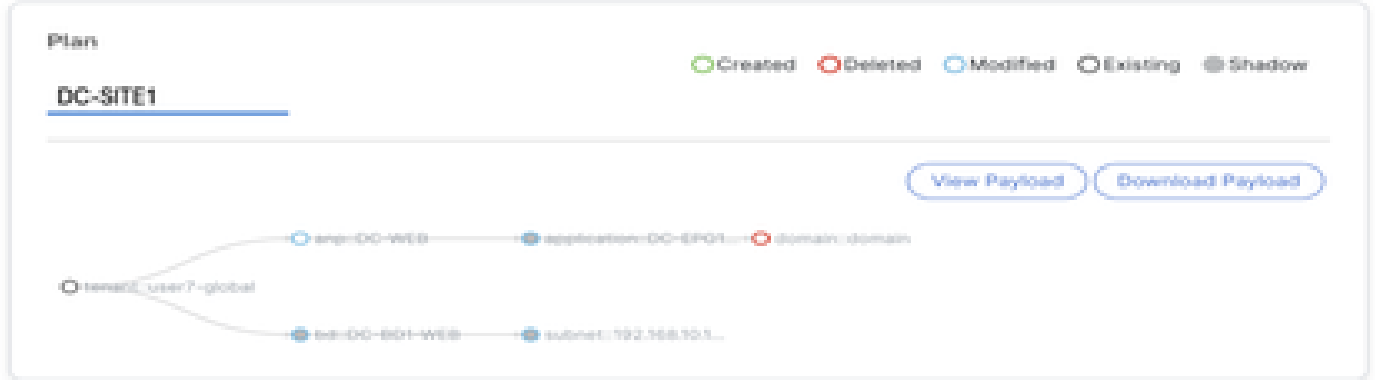
رشن ال اغل بلاق قوف رونا و DC1 عقوم ددح: 75 لكش

Undeploy Template-EPG1-BD1-Stretched

⚠ Undeploying this template will permanently remove applied policies from selected fabric. Review and take measure to prevent any functionality loss.

Fabric

DC-SITE1



Undeploy

(DC) ةكبشلا يف مكحتلا ءدحو عقوم نم EPG1-BD1-Extended-بلاقلا لصف

DC. عقوم نم Template-EPG1-BD-Extended ءوطخلل هذه لصف

بلاقلا لصف لىل عرقنا: 76 لكش

Schema-1

Refresh Audit Logs Create New Template View Schema

View Template-EPG1-BD1-Stretched

Template Properties DC-SITE1 DR-SITE2

Template Summary

Type: Application Tenant: Production Template Status: Out of Sync Associated Fabric: 1 in Sync 0 Out of Sync Last Action: Undeployed Last Deployed: 2025-05-11 pm

Filter

Application Profile DC-WEB

EPGs

DC-EPG1-WEB

Bridge Domains

Create Bridge E

- Add/Remove Fabric
- Disassociate Fabric
- Clone Template
- Undeploy Template
- Delete Template
- View Deployed Configuration
- View Deployment Dependencies
- View Deployment Plan
- Reconcile Configuration Drifts
- View Version History
- Roll Back Version
- Tag

DC1 عقوم ديحت ءاغل: 77 لكش

Add Fabrics To Template-EPG1-BD1-Stretched

34

Name

DC-SITE1
E.G.100

DR-SITE2
E.G.100

نم Template-EPG1-BD1-Extended م DC-SITE2 عئج: 78 لكش

Schema-1

[Refresh](#) [Audit Logs](#) [Create New Template](#) [Save Schema](#)

View [Template-EPG1-BD1-Stretched](#)

Template Properties **DR-SITE2**

Template Summary

Type Application	Tenant Production	Template Status In Sync	Associated Fabrics In Sync: 1 Out of Sync: 0	Last Action Undeployment Successful Last Deployed: Jan 4, 2025 01:30 am	Deployment Mode Multi-Fabric
---------------------	----------------------	---	--	--	---------------------------------

[State Template](#) [Deploy Template](#) [Action](#)

Filter [IMPORT](#) [SELECT](#) [Create](#)

Application Profile DC-WEB [Create Application Prof](#)

EPGs [Create](#)

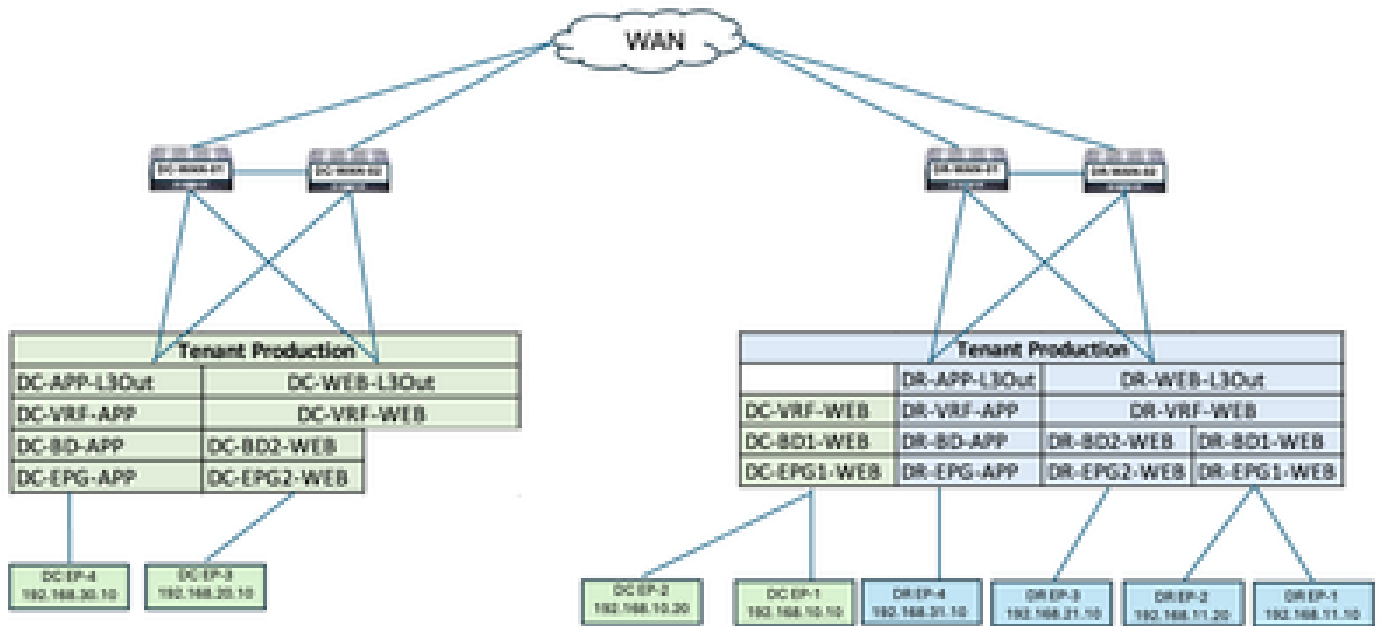
DC-EPG1-WEB

Bridge Domains [Create Bridge D](#)

DC نم Template-EPG1-BD1-Extended رشن ءاغلإ دع ب يقطنم ميمصت

بلاقلا رشن ءاغلإ دع ب DC ع قوم نم ءعج DC-BD1-Web و DC-EPG1-Web دع ي ال

بلاقلا رشن ءاغلإ دع ب يقطنم ميمصت: 79 لكش



إعاشن VRF-contract-site2-بل اقل اءاشن

و Template لى إلى DR-SITE2 ة فاضا تم. Schema-1 لءاد Template-VRF-Contract-Site2 ءاشن م بل اقل اءه مدءت سى. ءق وم ل اب صاء بل اقل اءه. بل اقل اء سفن ب ءنرء ق م ل Tenant-Production بل اقل اءه DC-EPG1-WEB و DC-BD1-WEB ل DR ءق وم نم ءقاعء ل و VRF ن ارق ل

ءءءءم ل ACI ءا ءبش ءىءء - قى ب طء بل اقل ة فاضا: 80 ل ءش

Add Application Template

✕

1 Select a Template type

2 Detail

3 Summary

Select a Template Type
Let's choose the type of template you want to work with

- ACI Multi-Cloud**
 - On-prem ACI fabric to fabric
 - On-prem ACI fabric to cloud fabric
 - Cloud fabric to cloud fabric
- NDPC**
 - HX-OS based network
- Cloud Local**
 - Non-stretched template for cloud fabric local BGP-IPv4 connected fabric

رءءءم ل ءاءءا ءءءء، VRF-Contract-Site2-بل اقل اءم سا بل اقل ة فاضا: 81 ل ءش ل


Add Application Template

X



Details

Now name the template and select a tenant



ACI Multi-Cloud

- On-prem ACI fabric to fabric
- On-prem ACI fabric to cloud fabric
- Cloud fabric to cloud fabric

GENERAL

Display Name *

Template-VRF-Contract-Site2

Internal Name: Template-VRF-Contract-Site2.

[Add Description](#)

Select a Tenant *

Production X

Deployment Mode ⓘ

Multi-Fabric

Autonomous

Cancel

Back

Next

2 عقوم-دق-ع-VRF-بلاق لي صافات: 82 لكشلا

Add Application Template



Summary

ACI Multi-Cloud

- On-prem ACI fabric to fabric
- On-prem ACI fabric to cloud fabric
- Cloud fabric to cloud fabric

Details

Template name
Template-VRF-Contract-Site2

Deployment Mode
Multi-Fabric

Tenant
Production

Cancel

Back

Continue to template

Template-VRF-Contract-Site2 في VRF دقع داريت سا

DR-SITE2. نم DR-VRF-WEB-Contract و DR-VRF-WEB داريت سا

DR-SITE2 ددحو داريت سا قوف رقنا: 83 لكش

Schema-1

Refresh Audit Logs Create New Template Save Schema

View Template-VRF-Contract-Site2

Template Properties

Template Summary

Type: Application **Tenant:** Production **Template Status:** Unassociated **Associated Fabrics:** In Sync: 0, Out of Sync: 0 **Last Action:** Updated **Deployment Mode:** Multi-Fabric

[Edit Template](#) [Deploy Template](#) [Actions](#)

[IMPORT](#) [SELECT](#) [Create Or](#)

DC-SITE1
DR-SITE2

DR-SITE2 نم دقع دي دحت: 84 لكشلا

Import from DC-SITE1

FAULT TYPE		
APPLICATION PROFILE 0 out of 3	<input type="checkbox"/> DC-EPG-TO-EPG-WEB-CON 1 FILTER	
EPG 0 out of 4	<input type="checkbox"/> DC-EPG-TO-L3Out-WEB-CON 1 FILTER	
EXTERNAL EPG 0 out of 4	<input type="checkbox"/> DR-EPG-TO-EPG-APP-CON 1 FILTER	
CONTRACT 2 out of 6	<input checked="" type="checkbox"/> DR-EPG-TO-EPG-WEB-CON 1 FILTER	<input checked="" type="checkbox"/>
FILTER 2 out of 6	<input type="checkbox"/> DR-EPG-TO-L3Out-APP-CON 1 FILTER	
VRF 0 out of 4	<input checked="" type="checkbox"/> DR-EPG-TO-L3Out-WEB-CON 1 FILTER	<input checked="" type="checkbox"/>
BD 0 out of 4		
L3OUT 0 out of 4		

[Import](#)

DR-SITE2 نم ةيفصت لماع دي دحت: 85 لكشلا

Import from DC-SITE1

X

APPLICATION PROFILE	0 out of 3	<input type="checkbox"/>	DC-EPG-TO-EPG-WEB-FIL	
EPG	0 out of 4	<input type="checkbox"/>	DC-EPG-TO-L3Out-WEB-FIL	
EXTERNAL EPG	0 out of 4	<input type="checkbox"/>	DR-EPG-TO-EPG-APP-FIL	
CONTRACT	2 out of 6	<input checked="" type="checkbox"/>	DR-EPG-TO-EPG-WEB-FIL	
FILTER	2 out of 6	<input type="checkbox"/>	DR-EPG-TO-L3Out-APP-FIL	
VRF	0 out of 4	<input checked="" type="checkbox"/>	DR-EPG-TO-L3Out-WEB-FIL	
BD	0 out of 4			
L3OUT	0 out of 4			

Import

DR-Site2 نم VRF ددح: 86 لكشلا

Import from DC-SITE1

X

APPLICATION PROFILE	0 out of 3	<input type="checkbox"/>	DC-VRF-APP
EPG	0 out of 4	<input type="checkbox"/>	DC-VRF-WEB
EXTERNAL EPG	0 out of 4	<input type="checkbox"/>	DR-VRF-APP
CONTRACT	2 out of 6	<input checked="" type="checkbox"/>	DR-VRF-WEB
FILTER	2 out of 6		
VRF	1 out of 4		
BD	0 out of 4		
L3OUT	0 out of 4		

Import

دق ع ل / VRF تام ول عم عم 87: template-web-vrf-contract-site2 لكش

Schema-1

Refresh Audit Logs Create New Template Save Schema

1 Out of Sync 1

Filter

IMPORT SELECT Create

Contracts Create Co

DR-EPG-TO-EPG-WEB-CON DR-EPG-TO-L3Out-WEB-CON

VRFs Crea

DR-VRF-WEB

Filters Crea

DR-EPG-TO-EPG-WEB-FIL DR-EPG-TO-L3Out-WEB-FIL

رشن template-VRF-contract-site2

DR-Site2 ددحو Template-VRF-Contract-site2 رشن قوف رونا

template-VRF-contract-site2 لى نىب ةفاضل: 88 لكش

Add Fabrics To Template-VRF-Site2

✕

Name

● DC-SITE1
6.0(5h)

● DR-SITE2
6.0(5h)

ةنمازمالا بلاوق رشن: 89 لكشلا

Deploy Out of Sync Templates

✕

The following templates will be deployed in the specified order

Out of Sync Templates

Filter by attributes

Template Name	Template Type	Associated Fabrics
Template-VRF-Contract-Site2	Application	1

1 items found

Rows per page

5

<

1

>

Cancel

Deploy Out of Sync Templates

رشنلا لمتكا: 90 لكشلا

Schema-1 Refresh Audit Logs Create New Template Save Schema

Type	Tenant	Template	Associated Fabrics	Last Action	Deployment
Application	Production	Status In Sync	1 In Sync 0 Out of Sync	Deployment Successful Last Deployed: Jan 4, 2025 01:57 am	Mode Multi-Fabric

Filter REPORT SELECT Create

Contracts Create Co

- DR-EPG-TO-EPG-WEB-CON
- DR-EPG-TO-L3Out-WEB-CON

VRFs Cre

- DR-VRF-WEB

Filters Creab

- DR-EPG-TO-EPG-WEB-FIL
- DR-EPG-TO-L3Out-WEB-FIL

DR-VRF-WEB ب DC-BD1-WEB طبر

هؤاشن|م ت يذلاو Template-EPG1-BD1-Stretched نم DC-BD1-WEB ب DR-VRF-WEB نارق اب مق
م اق بس م DC-BD1-WEB اعزج نم DR-SITE2.

Template-EPG1-BD1-Extended ىل ع رقنا : 91 لكش

Schema-1 Refresh Audit Logs Create New Template Save Schema

View Template-EPG1-BD1-Stretched

Template Properties **DR-SITE2**

Type	Tenant	Template	Associated Fabrics	Last Action	Deployment
Application	Production	Status In Sync	1 In Sync 0 Out of Sync	Deployment Successful Last Deployed: Jan 4, 2025 01:36 am	Mode Multi-Fabric

Filter REPORT SELECT Create

Application Profile DC-WEB Create Application Prof

EPGs Creat

- DC-EPG-WEB

Bridge Domains Create Bridge D

92: لکش DC-BD1-WEB ب DR-VRF-WEB طبر

DC-BD1-WEB

[View Relationship](#)

Annotations

Key	Value
+ Create Annotations	

Properties

[On-Premises Properties](#)

Virtual Routing & Forwarding

L3 Stretch



Inter-site BUM Traffic Allow



Optimize WAN Bandwidth



Unicast Routing



L3 Multicast

[OK](#)

DC-EPG1-WEB لى DR دوق قىب طت

DC-EPG1-WEB نم لاصتال DR دوق مدختسي يذلا DC-EPG1-WEB لى DR-Contract قىب طت WEB DR-SITE2 نم اعزج DC-EPG1-WEB دعي. Inter-EPG و VRF و DC نىب امي ف

DC-EPG DC-EPG1-WEB دوق فذح: 93 لکش

DC-EPG1-WEB

[View Relationship](#)

Common Properties

Display Name

Deployed Name: DC-EPG1-WEB

Description

Annotations

Key	Value
+ Create Annotations	

Contracts

Name	
DC-EPG-TO-L3Out-WEB-COM	✎ 🗑
Type: provider	
DC-EPG-TO-EPG-WEB-COM	✎ 🗑
Type: provider	
DC-EPG-TO-L3Out-WEB-COM	✎ 🗑
Type: consumer	
DC-EPG-TO-EPG-WEB-COM	✎ 🗑
Type: consumer	

[+ Add Properties](#)

94: كاش DC-EPG1-WEB في DR دوقع ة فاضا: لكش

DC-EPG1-WEB

[View Relationship](#)

Display Name

DC-EPG1-WEB

Deployed Name: DC-EPG1-WEB

Description

Annotations

Key	Value
-----	-------

[+ Create Annotations](#)

Contracts

Name

DR-EPG-TD-EPG-WEB-COM

Type: consumer

DR-EPG-TD-EPG-WEB-COM

Type: provider

DR-EPG-TD-L3Out-WEB-COM

Type: consumer

DR-EPG-TD-L3Out-WEB-COM

Type: provider

[+ Add Contract](#)

EPG Type

Application

Service

OK

95: كاش Template-EPG1-BD1 لى ع زومل تامول عمل: لكش

Schema-1

[Refresh](#)[Audit Logs](#)[Create New Template](#)[Save Schema](#)

Template Properties **DR-SITE2**

Template Summary

[Edit Template](#)[Deploy Template](#)[Actions](#)

Type
Application

Tenant
Production

Template Status
Out of Sync

Associated Fabrics
1 In Sync 0
1 Out of Sync 0

Last Action
Updated
Last Deployed: Jan 4,
2025 01:52 am

Deployment Mode
Multi-Fabric

Filter

IMPORT - SELECT

[Create Or](#)

Application Profile DC-WEB

[Create Application Profile](#)

EPGs

[Create](#)

DC-EPG1-WEB

Bridge Domains

[Create Bridge Do](#)

DC-BD1-WEB

96: كاش ة نامزمل بل اوق رشن: لكش

Deploy Out of Sync Templates

x

The following templates will be deployed in the specified order

Out of Sync Templates

Filter by attributes

Template Name	Template Type	Associated Fabrics
Template-EPG1-BD1-Stretched	Application	1

1 items found

Rows per page

5

<

1

>

Cancel

Deploy Out of Sync Templates

رشننلا لم تكا : 97 لكشلا

Schema-1

Refresh Audit Logs Create New Template Save Schema

Template Summary

Type Application	Tenant Production	Template Status In Sync	Associated Fabrics 1	Last Action Deployment Successful Last Deployed: Jan 4, 2025 02:02 am	Deployment Mode Multi-Fabric
---------------------	----------------------	----------------------------	-------------------------	---	---------------------------------

Filter IMPORT - SELECT Create

Application Profile DC-WEB Create Application Prof

EPOs Create

DC-EPO1-WEB

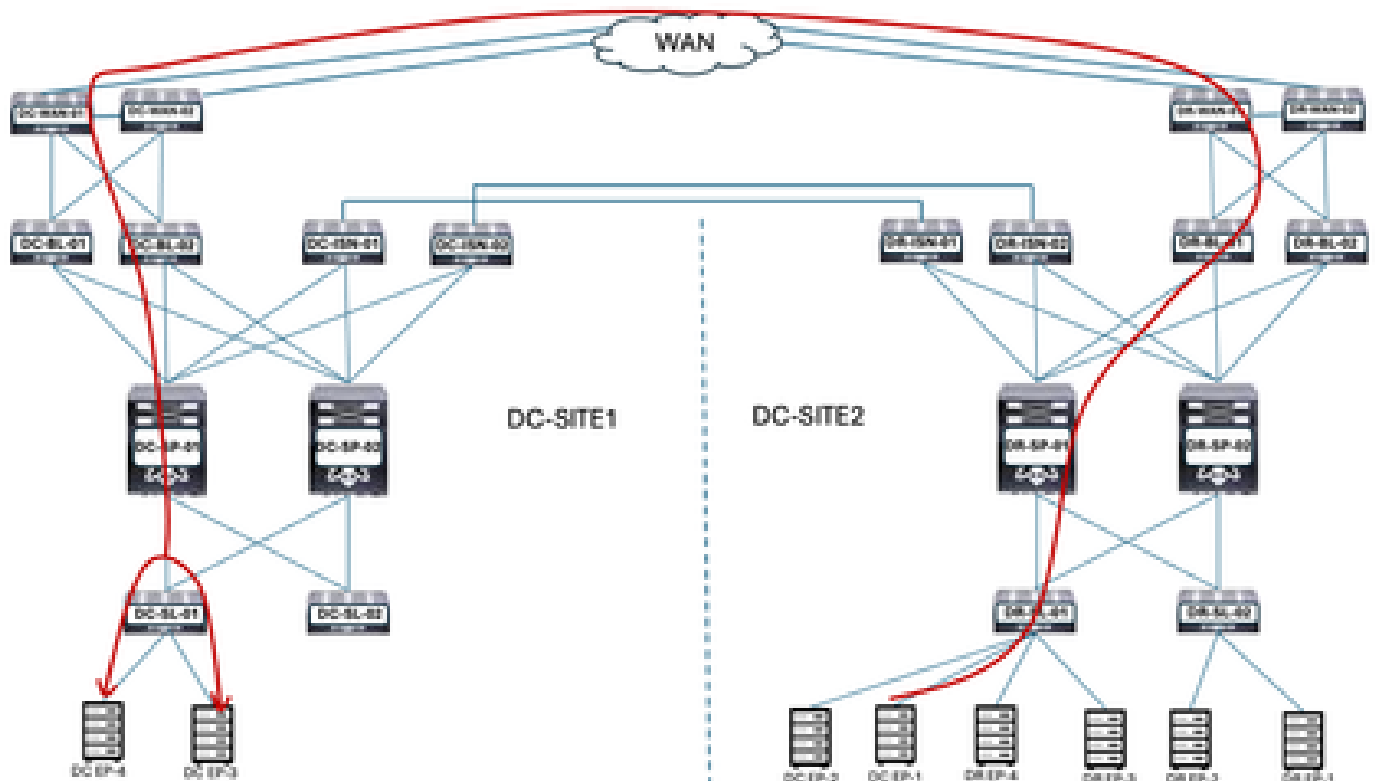
Bridge Domains Create Bridge E

DC-BD1-WEB

DC-Endpoint-1 تانايال رورم ة كرح ق فدت

اذه بل ط تي DC. ة ياهن طاقن ب لاصتال ل DR-L3Out-WEB م ادخت سا ي ف DC-Endpoint-1 ا دي WAN تالوحم ل ع ل ة رورضال ل ه و تال تاري ي غ ت لاصتال

DC-Endpoint-1 تانايال رورم ة كرح ق فدت : 98 ل ك ش



DC-EP-1 و DC/DR-EP ةدحو نيې لاصتال رابتخا

DC-EP-1 و DC-EP-2 ةدحو نيې لاصتال رابتخا ةباجتسا: 99 لكش

```

# ping 192.168.30.10 source 192.168.10.10 vrf site-1
PONG 192.168.30.10 [192.168.30.10] from 192.168.10.10: 56 data bytes
64 bytes from 192.168.30.10: icmp_seq=0 ttl=249 time=2.406 ms
64 bytes from 192.168.30.10: icmp_seq=1 ttl=249 time=1.85 ms
64 bytes from 192.168.30.10: icmp_seq=2 ttl=249 time=1.863 ms
64 bytes from 192.168.30.10: icmp_seq=3 ttl=249 time=1.88 ms
64 bytes from 192.168.30.10: icmp_seq=4 ttl=249 time=0.987 ms

--- 192.168.30.10 ping statistics ---
5 packets transmitted, 5 packets received, 0.00% packet loss
round-trip min/avg/max = 0.987/1.317/2.406 ms
SITE2-EPI#
SITE2-EPI# ping 192.168.11.10 source 192.168.10.10 vrf site-1
PONG 192.168.11.10 [192.168.11.10] from 192.168.10.10: 56 data bytes
Request 0 timed out
64 bytes from 192.168.11.10: icmp_seq=1 ttl=252 time=1.439 ms
64 bytes from 192.168.11.10: icmp_seq=2 ttl=252 time=0.993 ms
64 bytes from 192.168.11.10: icmp_seq=3 ttl=252 time=1.615 ms
64 bytes from 192.168.11.10: icmp_seq=4 ttl=252 time=1.187 ms

--- 192.168.11.10 ping statistics ---
5 packets transmitted, 4 packets received, 20.00% packet loss
round-trip min/avg/max = 0.993/1.208/1.615 ms
SITE2-EPI#
SITE2-EPI# ping 192.168.21.10 source 192.168.10.10 vrf site-1
PONG 192.168.21.10 [192.168.21.10] from 192.168.10.10: 56 data bytes
64 bytes from 192.168.21.10: icmp_seq=0 ttl=252 time=1.491 ms
64 bytes from 192.168.21.10: icmp_seq=1 ttl=252 time=1.593 ms
64 bytes from 192.168.21.10: icmp_seq=2 ttl=252 time=1.816 ms
64 bytes from 192.168.21.10: icmp_seq=3 ttl=252 time=1.81 ms
64 bytes from 192.168.21.10: icmp_seq=4 ttl=252 time=1.848 ms

--- 192.168.21.10 ping statistics ---
5 packets transmitted, 5 packets received, 0.00% packet loss
round-trip min/avg/max = 1.81/1.231/1.593 ms
SITE2-EPI# ping 192.168.31.10 source 192.168.10.10 vrf site-1
PONG 192.168.31.10 [192.168.31.10] from 192.168.10.10: 56 data bytes
64 bytes from 192.168.31.10: icmp_seq=0 ttl=249 time=1.353 ms
64 bytes from 192.168.31.10: icmp_seq=1 ttl=249 time=1.129 ms
64 bytes from 192.168.31.10: icmp_seq=2 ttl=249 time=1.814 ms
64 bytes from 192.168.31.10: icmp_seq=3 ttl=249 time=1.485 ms
64 bytes from 192.168.31.10: icmp_seq=4 ttl=249 time=1.347 ms

--- 192.168.31.10 ping statistics ---
5 packets transmitted, 5 packets received, 0.00% packet loss
round-trip min/avg/max = 1.814/1.265/1.485 ms
#####

```

ةمچرتل هذه ل و ح

ةلأل تاي نقتل ن م ة و مچ م ادخت ساب دن تسم ل ا اذ ه Cisco ت مچرت
م ل ا ل ا ا ن ا ع مچ ي ف ن م دخت س م ل ل م عد ي و ت م م م دقت ل ة ي ر ش ب ل و
ا م ك ة ق ي ق د ن و ك ت ن ل ة ل ا ة مچرت ل ض ف ا ن ا ة ظ ح ا ل م ي ج ر ي . ة ص ا خ ل ا م ه ت غ ل ب
Cisco ي ل خ ت . ف ر ت م م مچرت م ا ه م د ق ي ي ت ل ا ة ي ف ا ر ت ح ا ل ا ة مچرت ل ا ع م ل ا ح ل ا و ه
ي ل ا م ا د ع و ج ر ل ا ب ي ص و ت و ت ا مچرت ل ا ه ذ ه ة ق د ن ع ا ه ت ي ل و ئ س م Cisco
Systems (ر ف و ت م ط ب ا ر ل ا) ي ل ص ا ل ا ي ز ي ل ج ن ا ل ا دن ت س م ل ا