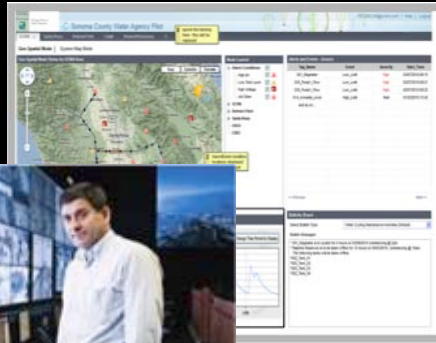




Agenda



What is a Smarter City?



Case Studies: Emergency Management, Water, Transport



Where do I start and how do I get there?

Intelligent



Interconnected



Instrumented



Technology to Deliver Smarter Cities

Smarter Planet: a response to a global challenge



ACCELERATING GLOBALIZATION

Countries and societies are becoming more economically interdependent across social, political and cultural boundaries, as illustrated by current economic conditions.



CHANGING DEMOGRAPHICS

Median ages are rising in the developed countries of Italy, Germany and Japan, but dropping in developing ones such as India.



EVOLVING SOCIETAL RELATIONSHIPS

Today, governments are expected to deliver results and value through secure, private services that are available anywhere at any time.



RISING ENVIRONMENTAL CONCERNS

Societies and governments are becoming more attuned to what the earth can provide and what it can tolerate.



EXPANDING IMPACT OF TECHNOLOGY

The adoption of the Internet is remaking the landscapes of business, healthcare and government.



GROWING THREATS TO SOCIAL STABILITY AND ORDER

From terrorism to armed conflict to pandemics to natural disasters, the character of threats is changing.



Visions of a Smart City...



The Well Planned City



The Healthy and Safe City



The Sustainable Eco-City



The Cultural-Convention Hub



The City of Digital Innovation



The City of Commerce

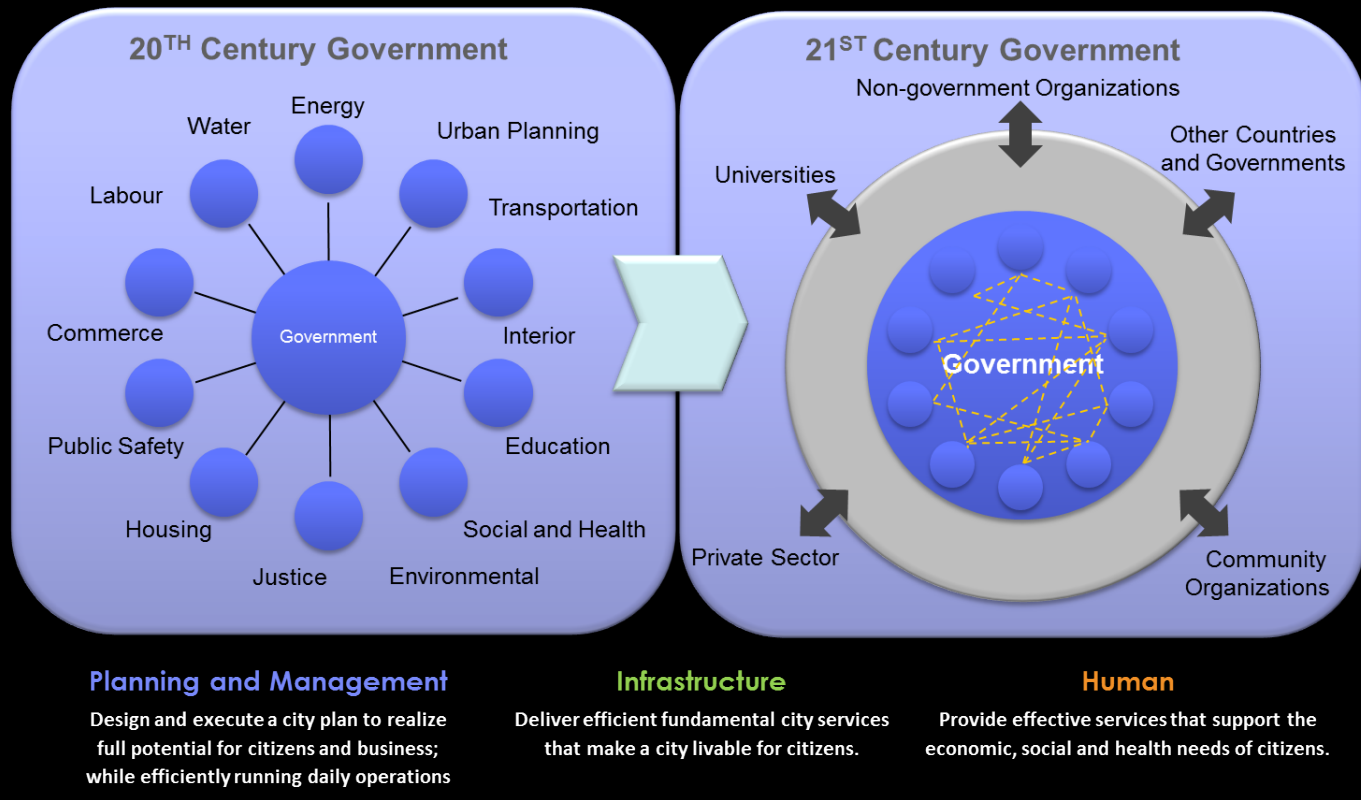
..... is one that *integrates technology* into a strategic approach to sustainability, citizen well-being, and economic development but also stressing the importance of integration and interaction across multiple domains.

Pike Research

..... is one that *integrates technology* into a strategic approach to sustainability, citizen well-being, and economic development but also stressing the importance of integration and interaction across multiple domains.

Pike Research

Collaboration: within governments and across the community
- essential for policy development, planning and management.



Water



Municipalities lose as much as 20% of their water through leaks.

Transport



A major traffic jam in China caused gridlock for 60 miles and lasted ten days

Energy



A blackout in the Northeast of the US affected over 55 million people.

The main role of technology in urban systems is to sense the activity to be able to monitor, manage, visualize and optimize

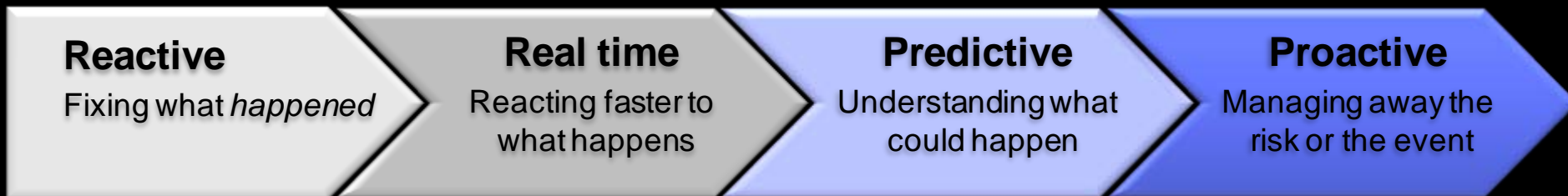


..... is one that *integrates technology* into a strategic approach to sustainability, citizen well-being, and economic development but also stressing the importance of integration and interaction across multiple domains.

Pike Research



has moved from... Reactive to Predictive to Proactive: Applying advanced analytics and industry expertise at all levels of the organization to more precisely predict - and continuously act on - risks and *opportunities*.



Instrumented, Interconnected, and Intelligent:

the ingredients for smarter government and smarter smarter cities

Intelligent



- Fusion and real-time analysis of information for public safety
- Assessment of trends for city planning and policy development
- Evaluating outcomes of social services to improve welfare of citizens
- Transparency in government and society

Interconnected



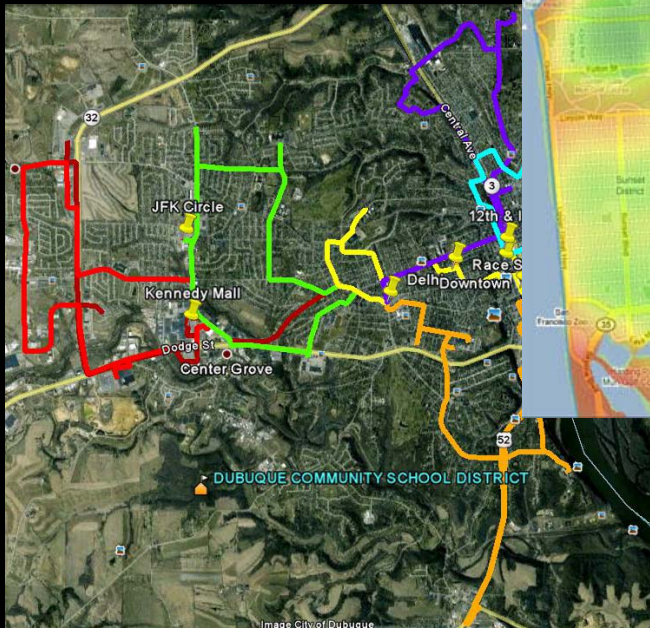
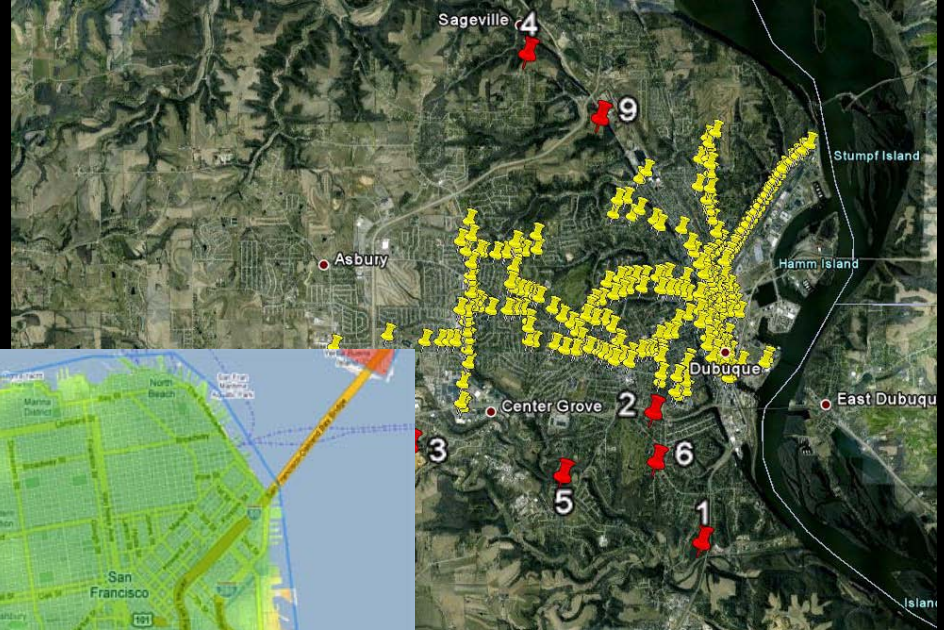
- Anywhere anytime access for citizens
- Dynamic information support to improve effectiveness of government employees
- Critical cross-agency information sharing for key decisions
- Collaboration across governments and with extended community

Instrumented



- Sensors that enable management of energy and resources
- Management of critical equipment used in transportation, water distribution and waste disposal to prevent outages & accidents
- Digital video surveillance to protect public buildings and the transportation infrastructure and to protect citizens in public areas
- Real time situational awareness to enable cities to respond to events

A City in Motion: Sensors in our Pockets



Collaboration: within governments and across the community

- to ensure the economic health, welfare and security of citizens

Engaging people to co-define (even co-produce) “what’s important”

Leveraging information to make better decisions



Coordinating resources and processes to operate effectively

Anticipating problems to resolve them proactively and manage risk

Dubuque: Smarter City Living Laboratory



IBM Smarter City Sustainability Model Tuesday June 28, 2011 Alerts Chat Edit Profile Change Password

Energy Consumption Report for **285958**

June Usage (kWh) 670 / 773	Trend 2%	Rank 19 ↓ 1	Green Points 3
<small>Till Date Month-end Estimate</small>	<small>Lower than average</small>	<small>Among 30 households</small>	



The 10 Smartest Cities on the Planet [Slideshow]

26 of 35
By Greg Lindsay on December 22, 2010

8. Dubuque, Iowa

In 2009, IBM declared Dubuque would become the "first integrated, smart city" in America, with interlocking systems watching the interplay between water, electricity, and transportation. This year, the city embarked on the first phase of the program, installing smart water meters in the homes of 311 volunteers. The meters measured consumption and wirelessly transmitted data to IBM servers every fifteen minutes, which homeowners could check online. The point was to see whether awareness of their usage encouraged them to conserve. The results haven't been published yet, but next year IBM intends to roll out similar experiments as part of the Dubuque 2.0 initiative.

June 2011 Comparison with Neighbors

Neighbors Like You \$ 128	Your Consumption \$ 125	Efficient Neighbors \$ 87
------------------------------	----------------------------	------------------------------

Manage your consumption

- Set a goal of 5% reduction for the rest of June. [Read more...](#)
- Change light bulbs to lower energy bulbs. [Read more...](#)
- Unplug TV and microwave when not in use. [Read more...](#)
- Use clothes dryer during off peak hours. [Read more...](#)

Set it

Select activity | Activity tracking | Activity history | Share story

More about IBM energy portal | About IBM | Resources | News | Contact us

...just put people back to work but to also make the city work again.

Former Factory Town in Iowa Eyes Green Future

Chapter 6 of Thursday, June 17, 2010
Jun. 17, 2010

6:17 / 9:38

Producers Cameron Hickey and Tom McNamara, editor David Kreger and special correspondent Miles O'Brien for [Blueprint America](#)

JIM LEHRER: Next: another of our Blueprint America reports on infrastructure. Tonight: A factory town bets on a green future. Our story was produced with WNET New York. The reporter is special correspondent Miles O'Brien.

<http://www.youtube.com/watch?v=mBSVITlkiBw>

Collaboration: within governments and across the community

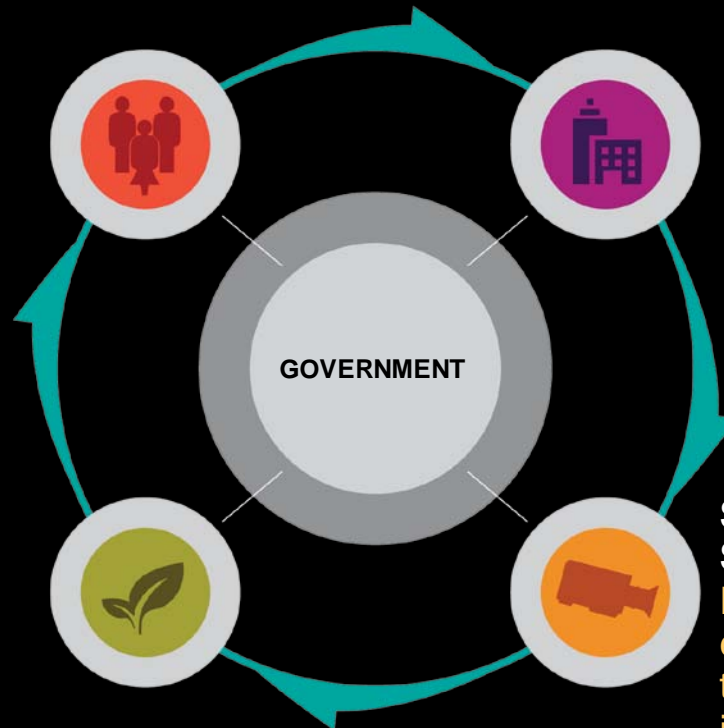
- and to ensure the economic health, welfare and security of citizens

IMPROVE CITIZEN AND BUSINESS SERVICES

Connecting people to programs based on individual needs—achieving sustainable outcomes while reducing operational costs and maximizing taxpayer value.

MANAGE RESOURCES EFFECTIVELY

Leveraging business intelligence and planning to improve insight and elevate performance with visibility and control.



ENSURE A SUSTAINABLE ENVIRONMENT

Deploying environmentally responsible operations, from energy efficiency and conservation to transportation management and the pursuit of renewable resources.

STRENGTHEN NATIONAL SECURITY AND PUBLIC SAFETY

Enabling defense and law enforcement organizations to achieve situational awareness, increased speed of command and combat superiority.

Smart Water: Sensors everywhere



IBM Sewer Management System C50

Menu View: Main View, Geo-Spatial, Nodes

Bulletin Board

- (2005-14-08 14:40:00) Mobile Pumping crews have been notified to centroid #6.
- (7805-14-08 14:12:00) Segment 1 flow meter is showing and reading maintenance schedule has been updated.

Node ID	Type	Severity	Status
1.8.1	CSO	Critical Height Threshold reached	Warning
1.8.1	SM	Structure Has Been set	Warning
1.8.4	CSO	Sensor out of range	Warning
1.28.1	CSO	Sensor status value	Warning

Line Down Values

Graph showing values over time for various nodes.

SMARTBAY GALWAY Marine Institute

Tide Sensor Network

Tide Level: 1.34 m
Atm. Pressure: 1025 mb
Sea Temp: 0 °C

EHS Sensor Network

Air Temp: 11.50 °C
Wind Speed: 0.00 m/s
Dissolved Oxygen: 3.77 mg/l
Salinity: 33.72 psu
Location: 53.3222 °N, 9.9322 °W

Flooding

Attribute	Alert	Min	Max	Actual
Atm. Pressure	Warning	950.0	1030.0	1020.0 mb
Rainfall	Warning	0.0	20.0	19.0 mm
Tide Height	Warning	1.0	3.0	1.0 m
Tide Direction	Warning	240.0	60.0	60.0 deg
Wind Direction	Warning	240.0	60.0	230.0 deg
Wind Speed	Warning	0.0	20.0	5.0 m/s

Galway Bay Map

Map showing sensor locations and tide levels.

Sonoma County Water Agency

Geo-Spatial Mode

Map showing sensor locations and system map mode.

Historical Data for S42

Graph showing gauge height over time.

Alerts and Events - Generic

Tag Name	Event	Severity	Start Time
S01_Regmeter	Low_Level	High	03/07/2010:09:15
S30_Pump_Flow	Low_Level	High	02/07/2010:08:21
S30_Pump_Flow	Low_Level	High	02/07/2010:08:22
S14_Annelid_Level	High_Level	Med	01/02/2010:15:42

Tourism and Water Safety

Boats currently docked: 0

Boats due in next 10 hours: 0



Working harder is not sustainable



Cities require innovative approaches

Innovative leadership in Rio de Janeiro transformed city operations

- Initial focus - prevent deaths from annual flooding
- Expanded to manage all emergency response situations
- Analyzes weather, energy, building, transportation, & water data in real-time
- Nationwide adoption in advance of Olympics and World Cup



Increasing efficiency in resource deployment, expanding early warnings to 48 hours, and coordinating all agencies in response

Innovative leadership in Alameda County transformed social services

- Initial focus – increase effectiveness of social services case workers
- Expanded to integrate all key social services departments
- Provides better service to clients, avoids overpayments and detects fraud
- High value results:
Average annual benefit: \$24.7M
ROI: 631% with payback in 2 months



Reducing benefits overpayment, improving appeals litigation, and increasing productivity for 1,200 case workers

The IBM Intelligent Operations Center for Smarter Cities enables city leaders to apply global best practices

Inspired By



Public Safety

- Predict, monitor, and mitigate crisis situations
- Automatically analyze video streams for threats
- Analyze data to detect and act on criminal patterns



Transportation

- Improve traffic management
- Optimize roadway capacity
- Enhance travel experience



Water

- Analyze water use and consumption patterns
- Predict asset failures to reduce costs
- Optimize work orders to improve service



Over 25 new and enhanced use cases based on lessons from inspirational leaders.

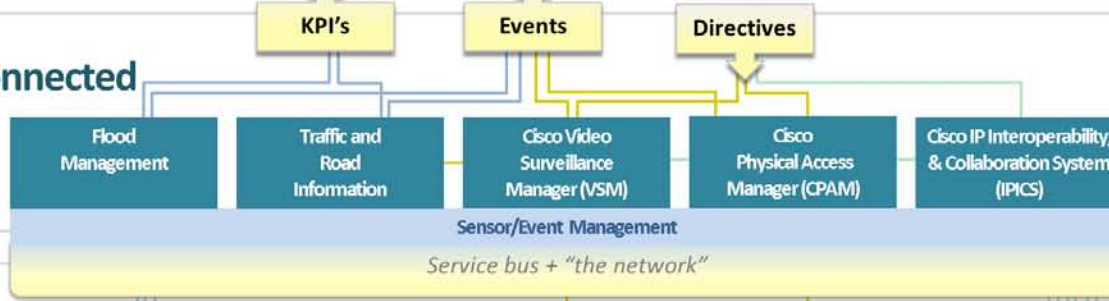


Intelligent

Predictive Analytics
Modeling & Simulation
Analytics



Interconnected



Instrumented



Safe and Sound

Public safety solutions from IBM and Cisco

Highlights
Strategic information to help make better public safety decisions, anticipate problems and coordinate resources for more rapid and cost-effective response.
Real-time situational awareness through observed, integrated video, video and data collection, analysis and management tools.
Key performance indicators to help identify trends, fine-tune use of resources and more slowly track spending.
Detection, assessment and response integrated into a holistic public safety function for municipalities, with the potential to reduce risk, consolidate programs and avoid waste.

Headlines from New York to Mumbai make it clear that municipalities around the world, now it's not the time to make safety a low priority. Terrorism may be top of mind, but it is only one in a growing list of threats to public safety faced by government officials everywhere. Add to emergency crime, major immigration, natural disasters, and the protection of city property and the safety of the public becomes readily apparent. Countering threats is the very real expectation to citizens and urban dwellers that government agencies are responsible for containing these threats and safeguarding their communities.

At the same time, constituents are holding municipal officials increasingly accountable for what they perceive to be unacceptably high and avoidable budgets. In a market, agencies face two apparently irreconcilable demands: ensure public safety in a time of unprecedented security challenges, and do so without increased expenditures.

And make no mistake, this expense is staggering. In the year 2009, the annual cost of crime in the United States was estimated to be nearly \$1.2 trillion. In Europe, the price tag for protecting against crime in England and Wales is equivalent to 6 percent of the gross domestic product for the entire region.



Mobile Emergency/
Event Networks



[Tweet](#) 20 [Like](#) 5 [Share](#) [+1](#) 1 [su](#) [f](#) [✉](#) [🖨](#) [Permalink](#) [RSS](#)

IBM Shows Tools For Smarter City Management

The Operations Center platform bundles information-management software with dashboard-style analytics, performance measures, and monitoring capabilities.

By [Doug Henschen](#) InformationWeek
June 06, 2011 01:21 PM

Here's IBM's message to cash-strapped cities: It won't take a pile of money and months of consulting and integration services to deploy the IBM Intelligent Operations Center for Smarter Cities, a software platform announced on Monday that is aimed at holistic city monitoring and management.

The IBM Intelligent Operations Center for Smarter Cities bundles a range of software components including a database (DB2), application server (WebSphere), business rules engine (iLog), data integration and data management (various InfoSphere pieces), and business intelligence and real-time monitoring (Cognos). By bringing everything together into a single product, which starts shipping later this month, IBM says it has made the technology easier to purchase and deploy.



Slideshow: IBM Empowers Smarter Cities

(click for larger image and for full slideshow)

"It's a massive shortcut that helps cities integrate all kinds of

More Software Insights

White Papers

- [Becoming a Social Business: Why Organizations Choose IBM Solutions](#)
- [Collaboration for Dummies](#)

Reports

- [Strategy: BI and Analytics in Healthcare](#)

Warren Buffett invests \$10bn in IBM for 5% stake

AP | Nov 16, 2011, 12:29AM IST

OMAHA: Warren Buffett said Monday that his company has spent \$10.7 billion to buy more than 5% of IBM's stock this year, a surprising move by the billionaire investor who has long shied away from investing in high technology companies.

[✉](#) [🖨](#) [👤](#) [MORE](#)

👍 35
2
0

[f Recommend](#)
[🐦 Tweet](#)
[+1](#)

Thank
YOU



Multiple options help city leaders **deploy technology** regardless of size



On Premise:

- Build on workload optimized platforms
- Leverage infrastructure readiness services

Shared Services:

- Work together across multiple cities
- Share services using preconfigured systems

Cloud Delivery:

- Log on to your smarter city environment
- Customize interfaces, reports and data inputs

“It’s about transforming the way we do business, so we can invest that money in front-line service delivery”

Chief Superintendent Avon & Somerset Police

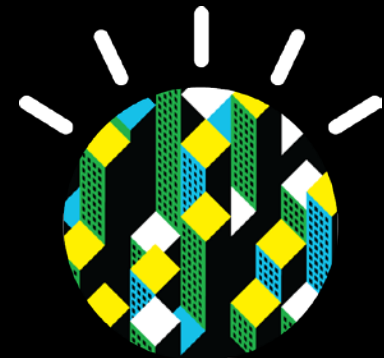
Inspired By



Together we will create a planet of Smarter Cities

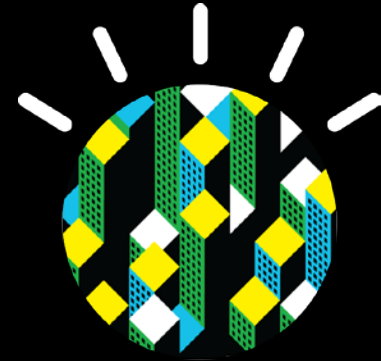
IBM: helping to help city leaders globally to innovate to meet and exceed citizen expectations

- 100 years of experience making the world work better through the use of technology
- Real products to enable sustainable economic growth
 - *Leveraging information to make better decisions*
 - *Anticipating problems to resolve them proactively*
 - *Coordinating resources to operate effectively*
- Local solutions based on global insight from 170+ countries



Over **2,000 city projects** leverage on IBM to help them transform into 21st century cities

Together we will create a planet of Smarter Cities



City of Zhenjiang

http://www.ibm.com/smarterplanet/us/en/smarter_cities/overview/index.html



City of Rio

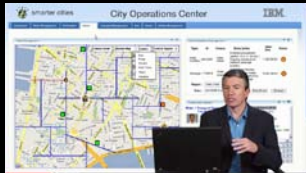
http://www.ibm.com/smarterplanet/us/en/smarter_cities/overview/index.html

Demonstration of the Intelligent Operations Centre



http://ibmtvdemo.edgesuite.net/software/industry/intelligent-oper-center/demo/3137_ControlRoom_Web.html

<http://www-01.ibm.com/software/industry/intelligent-oper-center/>



Intelligent Operations Centre

<http://www.youtube.com/watch?v=BT3Q4zyiNfA>

*Over **2,000 city projects** leverage on IBM to help them transform into 21st century cities*

Demonstrations on

<http://www.youtube.com/watch?v=nCT2-Plx5a4&feature=related>



Introduction

IBM Smarter City Operations Center



City Operations

http://www.ibm.com/innovati on/us/thesmar terci ty/index_flash.html?cmp=blank&a.m...



IBM Smarter Cities

<http://www.youtube.com/watch?v=N U19fWq6MRY&feature=related>



Smarter Buildings

<http://www.youtube.com/watch?v=KxHNVcOOJHM>



Smarter Cities

Smarter Cities: Introducing

Introducing 'The Smarter City'



Introducing Smarter

IBM Predictive Analytics



Smarter Policing

The City of Stockholm



Stockholm

2:09 Watch Later Error IBM - SMART CITIESby BarcelonaDigital976 views



Smarter Planet

IBM Smart Cities



Nairobi

The Future City



Future City

Smarter Cities Rio



Rio Crisis Ops