



The bridge to possible

Connect, simplify and
transform your infrastructure

CISCO *Connect*

#CiscoConnect



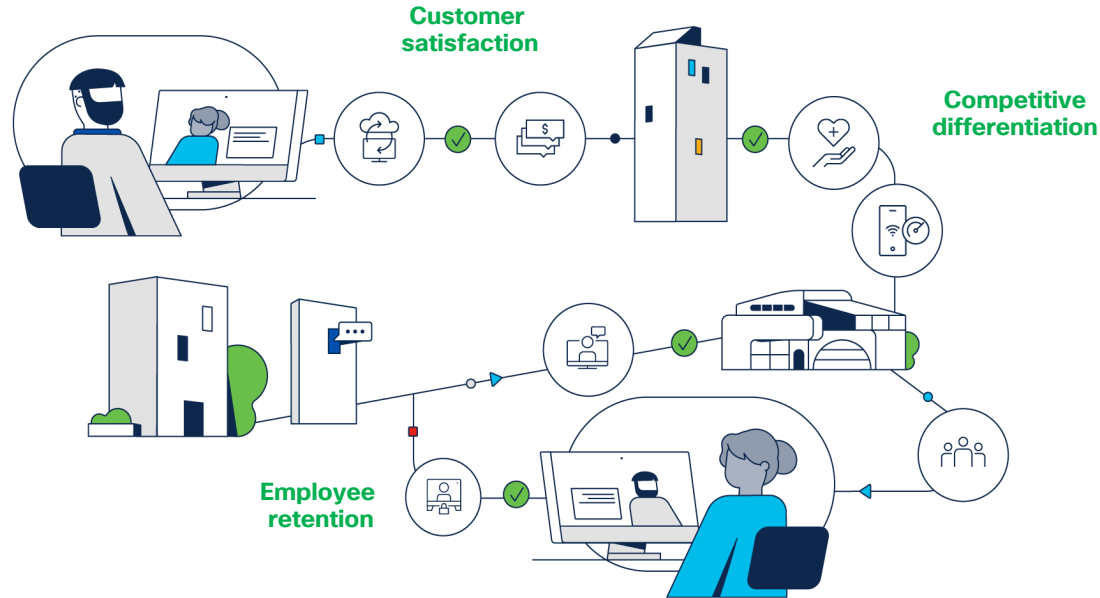
The bridge to possible

The next era of secure networking – Power of the platform

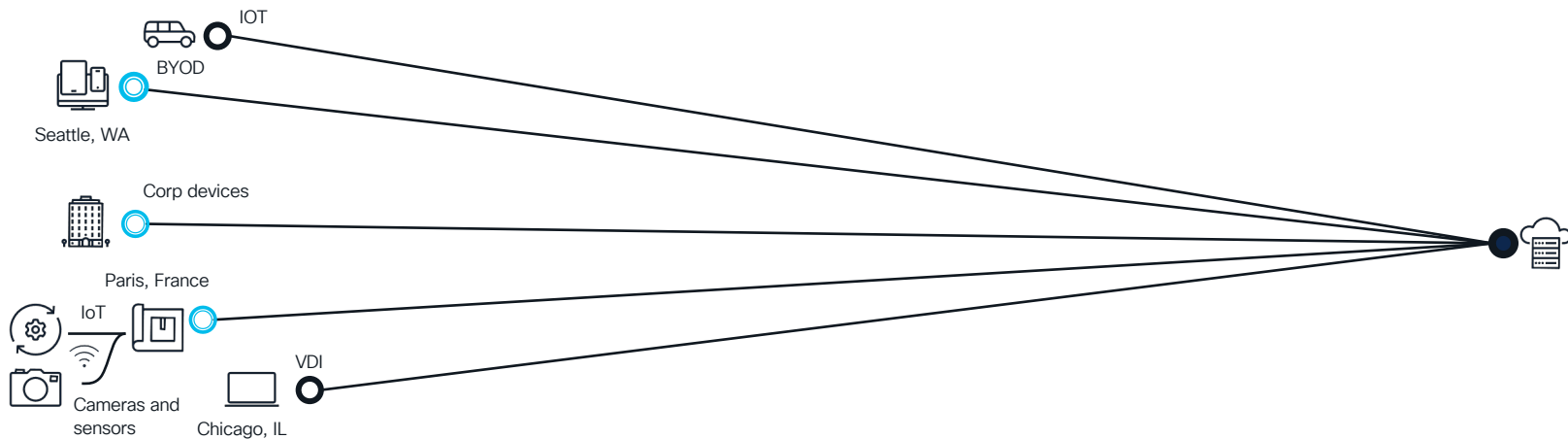
Brett Martin
Leader of Solutions Engineering,
Cisco Networking, UK & Ireland



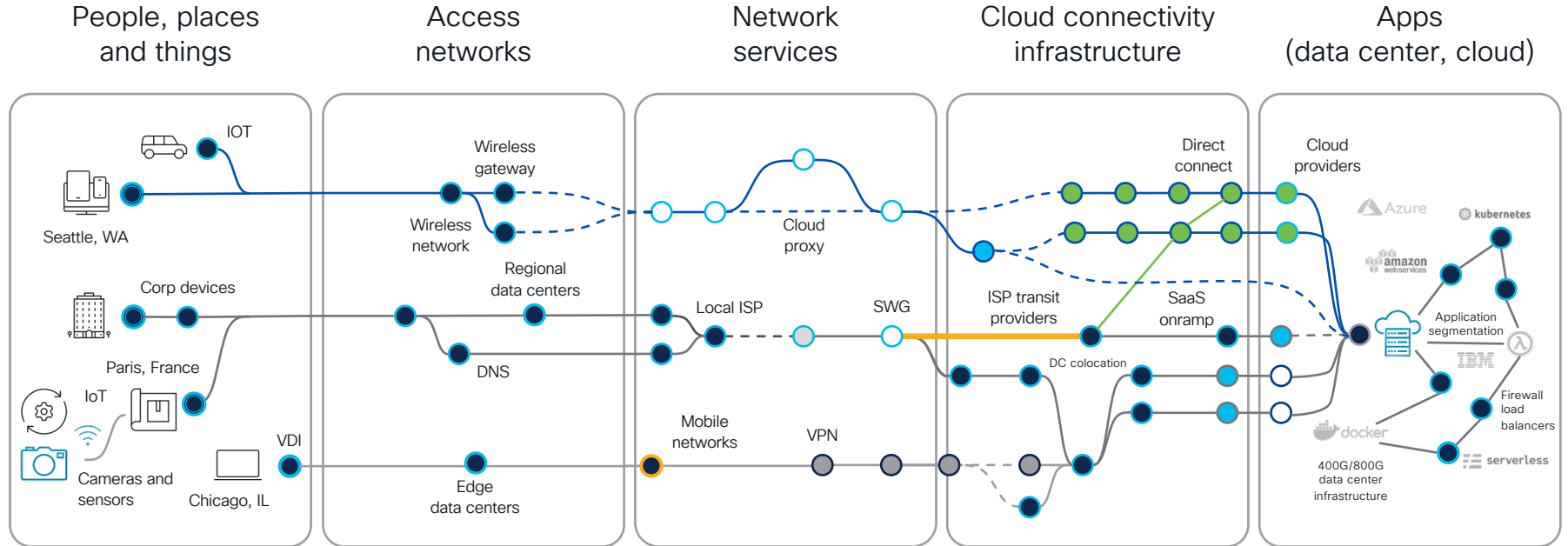
Now more than ever, experiences matter



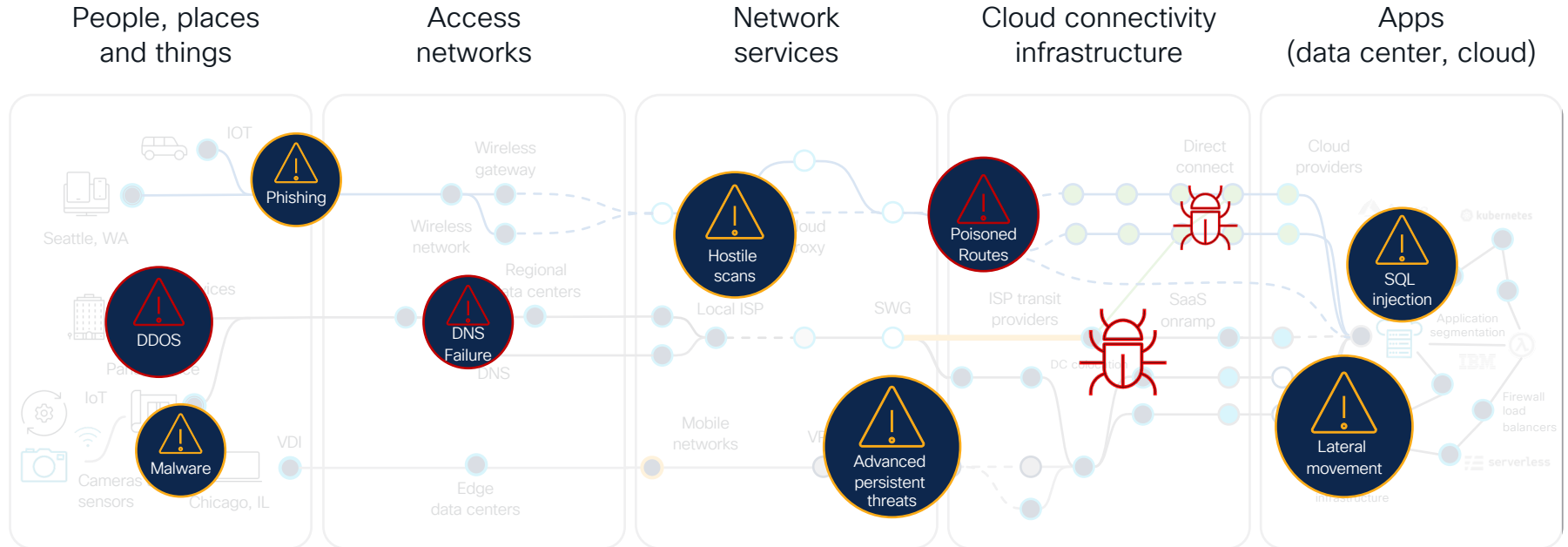
The experience you want



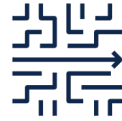
But the reality is...



But the reality is...



We heard **you**



Simple



Predictable



Outcome driven

Journey to the cloud



On-prem management

Use cases require on-prem delivery



Cloud enabled/hybrid management

Need to control on-prem for portions of the network, use cloud elsewhere



Cloud management

Prefer cloud-enabled delivery for simplicity

Optimized, simplified experiences for all networks

Simplifying the Cisco Networking portfolio



Management and
automation
platforms



Unified
hardware
portfolio



Operating
systems

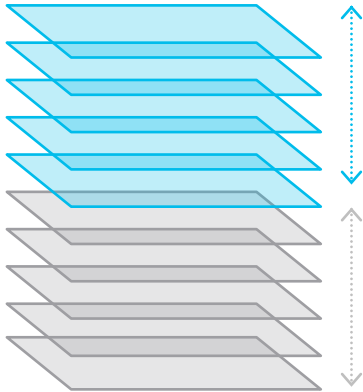
Unified Cisco Networking hardware



Unified Cisco Networking software

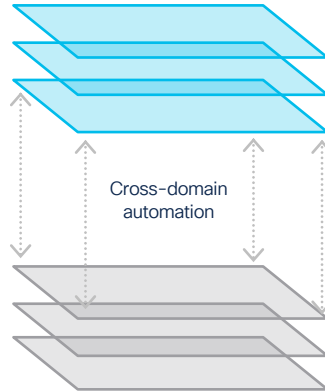
Delivering automation, analytics and assurance for simplified IT

Multiple cloud platforms



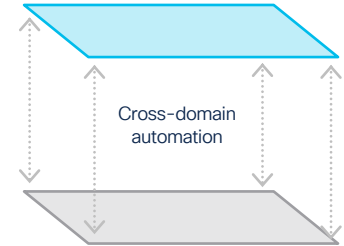
Multiple on-prem platforms

Fewer cloud platforms



Fewer on-prem platforms

Single cloud platform



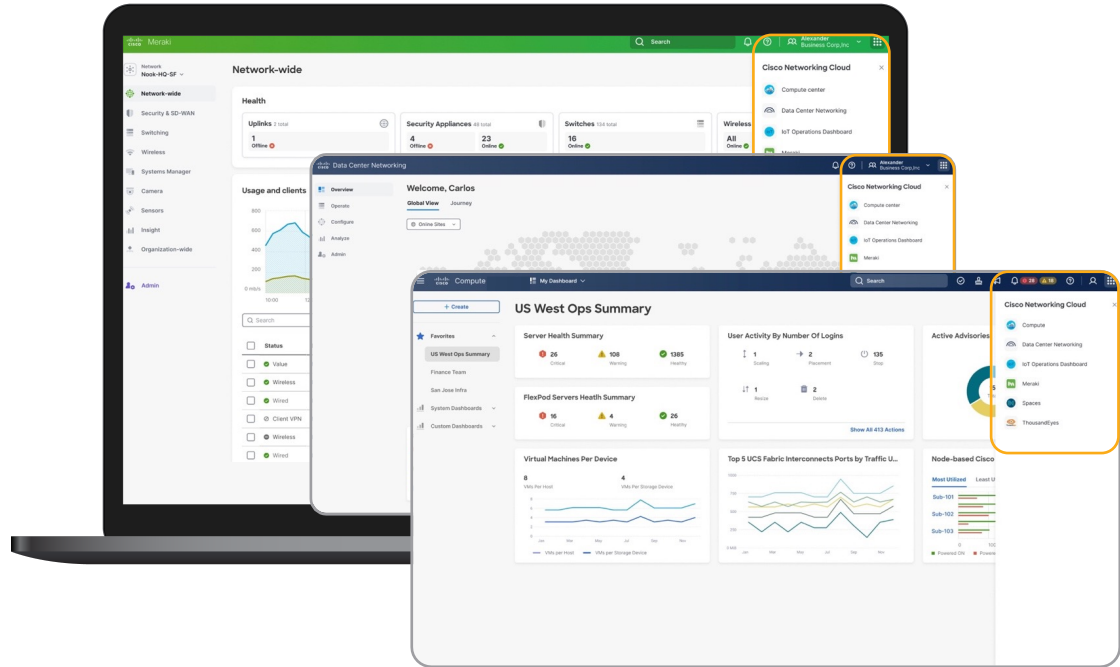
Single on-prem platform

The Cisco Networking Cloud

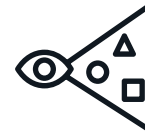
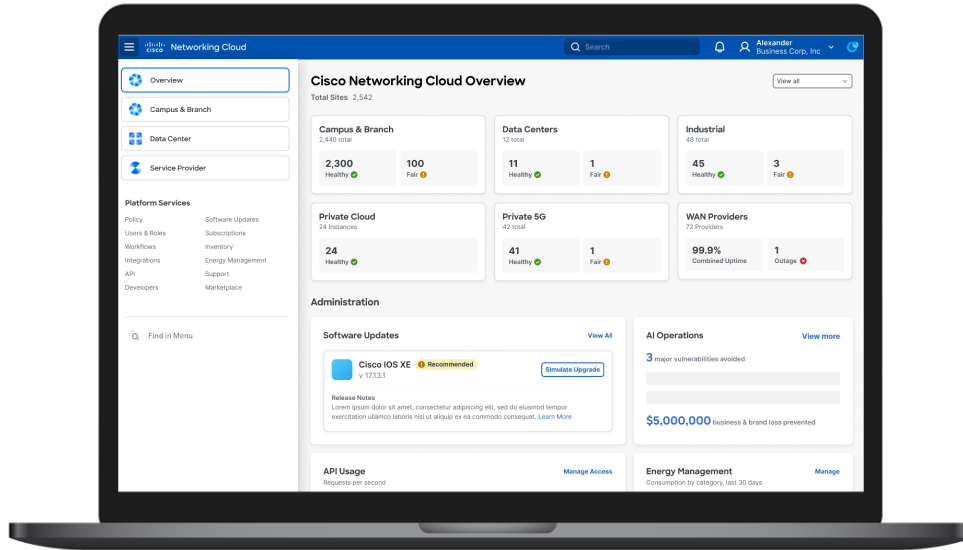


An integrated platform experience for on-prem and cloud operating models

Smooth navigation between all platforms



Cisco Networking Cloud



Complete visibility



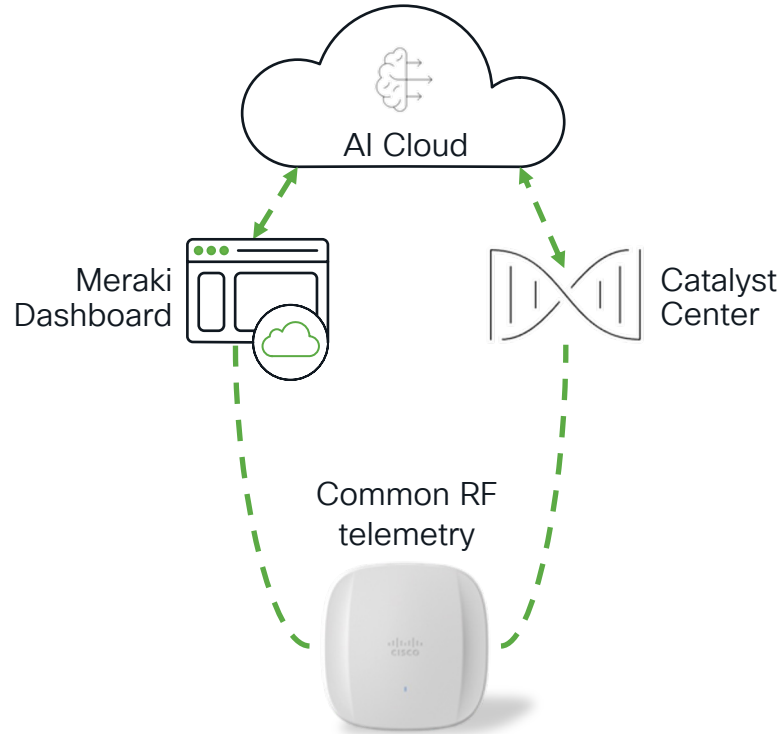
Security everywhere



Proactive, pre-emptive,
and automated operations

Unified Intelligence across Cisco Wireless

Powered by the World's Largest Wireless Data Lake



Now in Beta

AI-RRM improves wireless reliability

Trend-Based RRM

Optimize RF with weeks of historical analysis

Flexible Radio Assignment

Optimize band selection to minimize 2.4 GHz interference

Busy Hour Aware

Minimize disruptive changes during the critical times of day

CISCO *Connect*

#CiscoConn

Radio settings

[View old version](#)

Overview RF profiles **AI-RRM**

Trend-based RRM

Enable

Trend-based RRM uses an AI engine to improve the network performance.

Flexible Radio Assignment

Enable

FRA optimizes the 2.4 GHz band by strategically disabling redundant radios to reduce interference.

AI channel planning

Enable

AI channel planning improves channel assignment by leveraging artificial intelligence to optimize channel planning capabilities.

Busy hour

Enable

AI-RRM minimizes changes during the most active hours of the day ⓘ

Schedule (UTC-7)

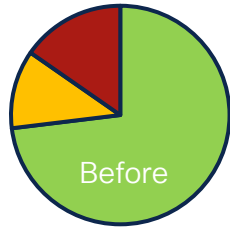
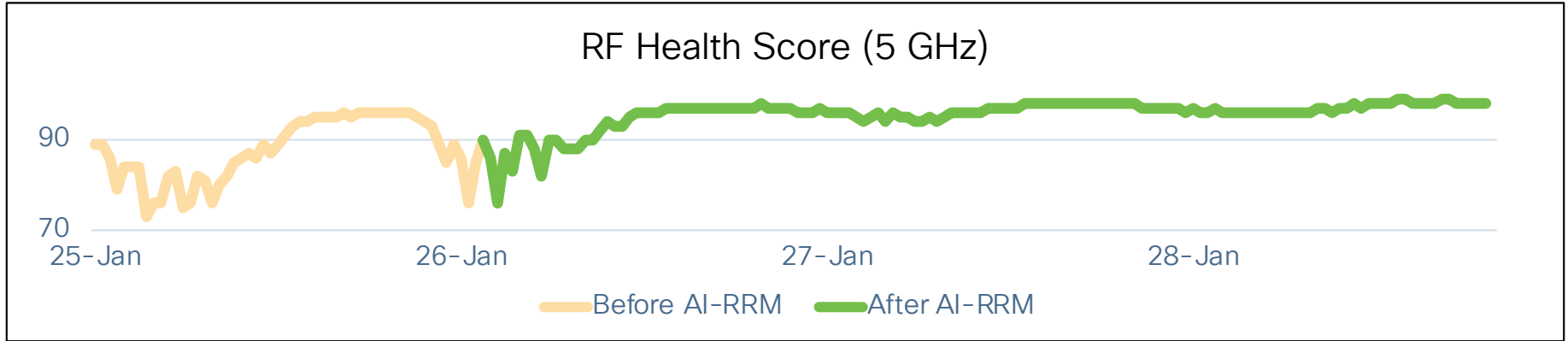
i The AI-RRM estimated busy hour for this network is 5:00 to 4:00

Auto

AI-RRM determines the optimal busy hour by analyzing client count and network usage data from the last 6 weeks.

Manual

Improving Wi-Fi at a University (Japan, 776 APs)



■ Good ■ Fair ■ Poor

RF Health Distribution

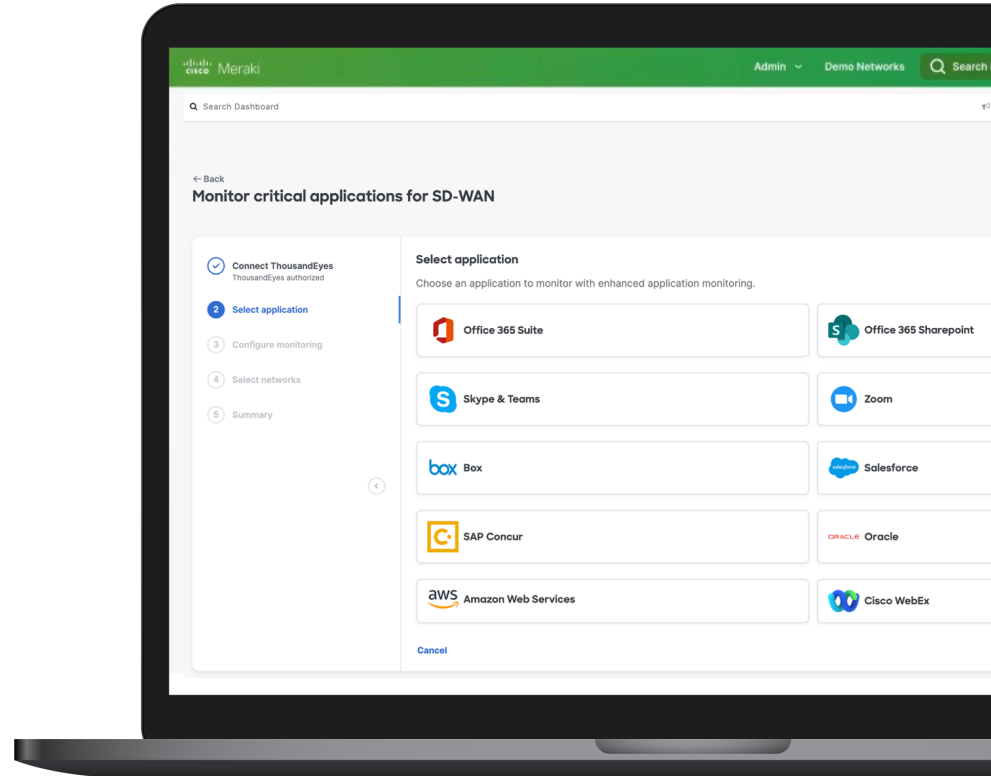


■ Good ■ Fair ■ Poor

Available Now

ThousandEyes agent on Meraki SD-WAN devices

Unparalleled **internet and SaaS visibility** with seamless ThousandEyes integration



Private Beta

ThousandEyes Meraki Assurance Integration

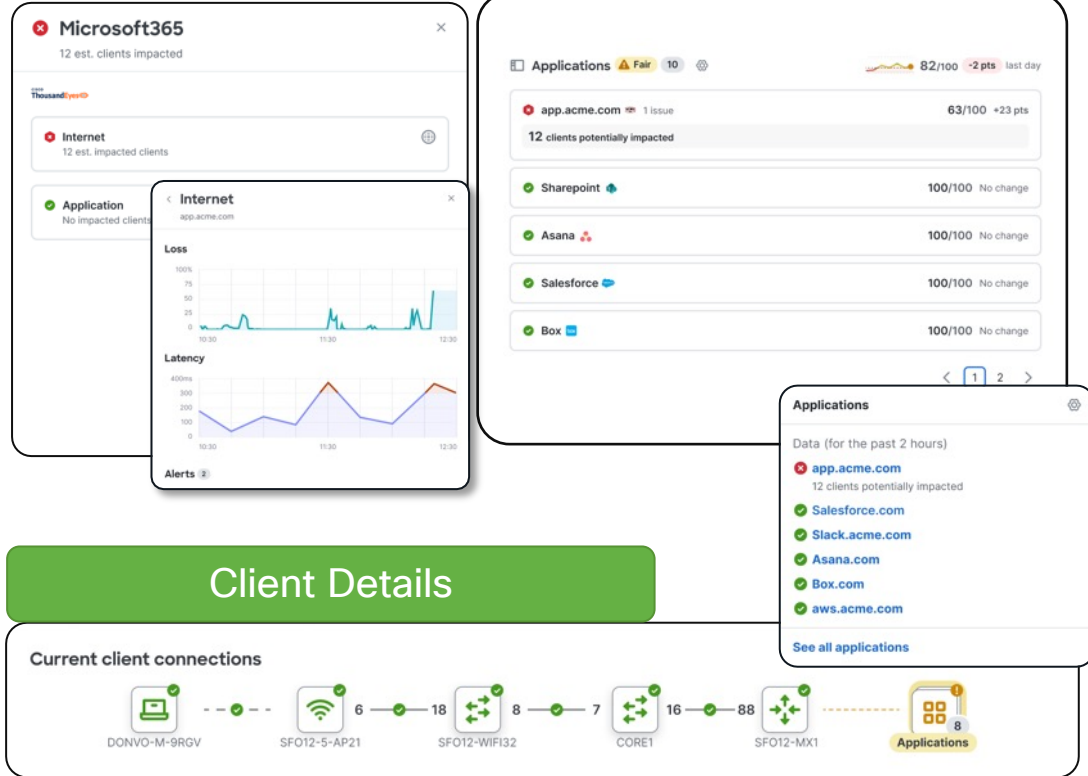
App health via active probing

Visibility beyond the WAN gateway

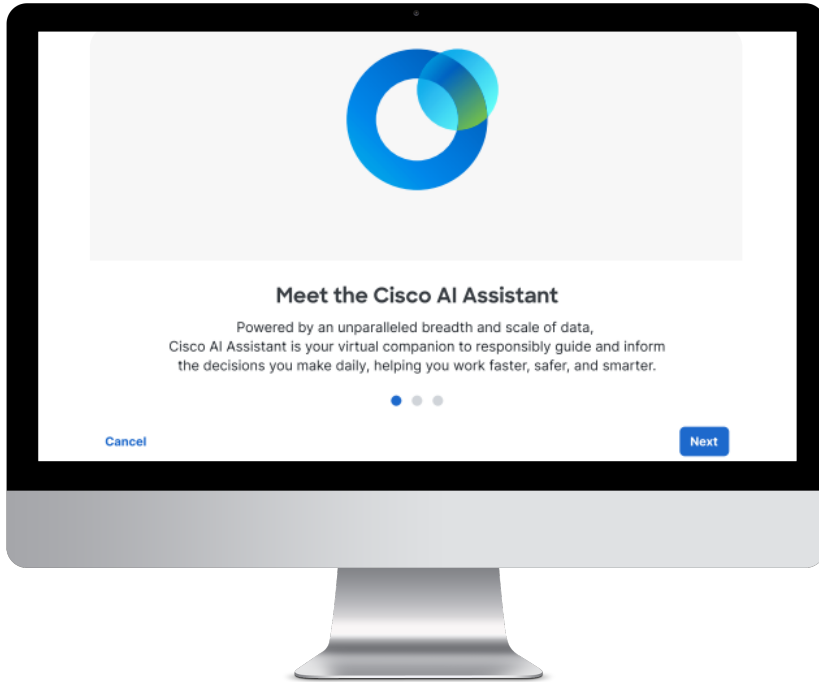
Isolate issues with ISP or app servers

Integrated into network-level & client-level workflows

Assurance Overview



Introducing **Cisco AI Assistant for Networking**



Private Preview



Empower productive IT Teams



Reduce management costs



Optimize network performance and reliability

In Progress

Root-cause analysis workflows

Deeper insights into the specific root causes of issues

Guided workflows to issue resolution

E.g., switch port CRC errors, VLAN mismatches, and more

The screenshot displays the Cisco Connect Alerts interface. The main view shows a list of alerts with columns for Severity, Alert Type, Alert Count, and Device Type. A green arrow points from the 'VLAN mismatch' alert in the list to a detailed view of that alert.

Alerts New

Active 492 Dismissed 630 Resolved

50 Critical 442 w

Last day 12 All networks Alert Type Device Type

Severity	Alert Type	Alert Count	Device Type
Critical	CRC errors	46	MS
Critical	Site-to-site AutoVPN is down	19	MX
Critical	Switch goes offline	4	MS
Warning	VPN problems on SSID	193	MR
Warning	Packet fragment Take action	93	MS
Warning	VLAN mismatch	3	MS
Warning	Ethernet negotiation failure	3	MS
Warning	STP topology change	3	MS
Warning	Issue with cloud archive	1	MV
Warning	Water detected	1	MT

VLAN mismatch Dismiss

VLAN configuration mismatch detected in **San Francisco SF012** between **UpstreamSw555/3** and **DownstreamSw777/8**, last alerted on August 25, 2023 at 09:32 AM (UTC)

Alert Details Troubleshooting Assistance

Alerted in last two weeks

Impacts

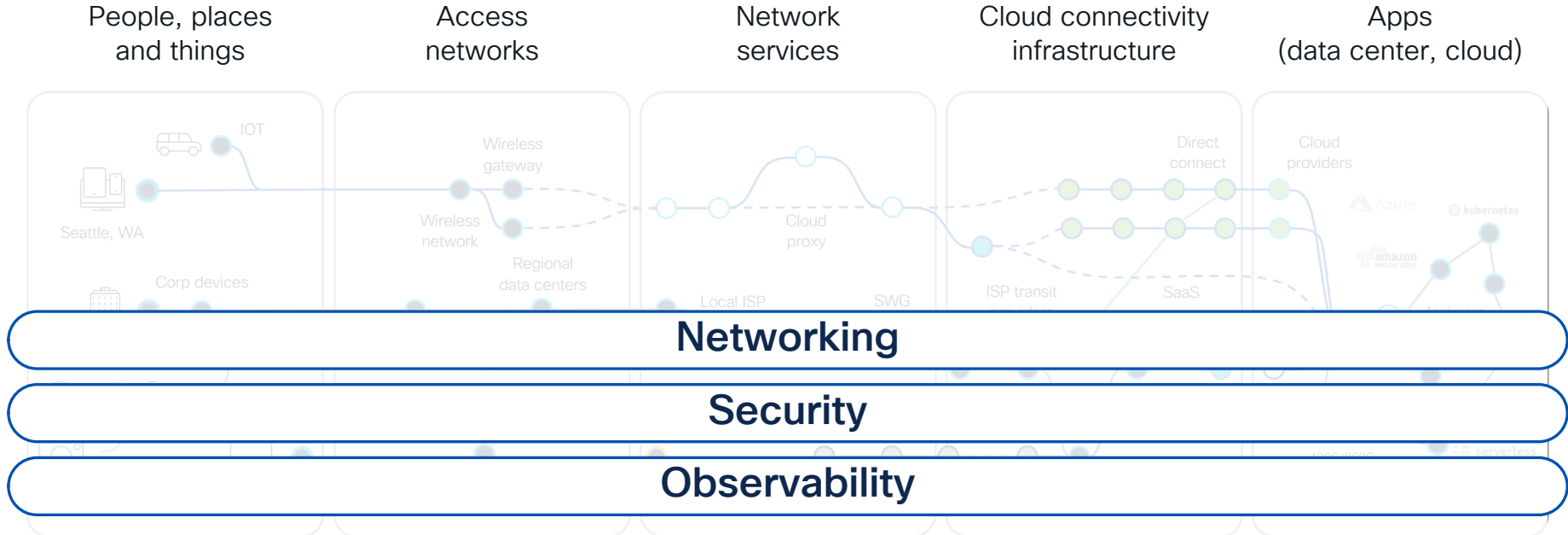
- Devices: 20 [1% last week](#)
- Clients: 150 [1% last week](#)
- Applications: 13 [1% last week](#)

Details

Allowed VLANs mismatch found. [Edit](#) the switchports' VLAN configurations to match exactly in order to clear this alert.

Port	3	8
Device	UpstreamSw555 Take action	DownstreamSw777
Last updated (UTC)	May 14, 2020 00:02	Sep 1, 2021 15:23
Type	Trunk	Trunk
Native VLAN	1200	1200
Allowed VLAN	1-99, 1200 1	1-99, 1200 1

Digital resilience across the global area network



Thank you

