

# Explore Cisco Identity Services Engine Advantage and Premier Licenses

## Benefits

Improve your security posture with Cisco Identity Services Engine (ISE) Advantage or Premier license

Cisco Identity Services Engine (ISE) empowers organizations to strengthen and simplify network security. Upgrading to ISE Advantage or Premier unlocks advanced capabilities beyond Essentials, enhancing your network's value, optimizing operations, and providing robust protection against emerging security threats.

### An ISE Advantage license offers the following features:

- **Granular segmentation:** Isolate critical assets and prevent lateral movement of threats.
- **Dynamic policy enforcement:** Automatically adapt access policies based on user roles, devices, and context.
- **Seamless ecosystem:** Easily integrate with other security tools (Cisco® and third-party tools) to boost visibility and streamline operations.

- **Additional capabilities** including endpoint profiling, BYOD support, and TrustSec.

### An ISE Premier license offers the following features:

- **Mobile Device Management integration (MDM) posture:** Secure and manage mobile devices seamlessly with platforms such as JAMF and Microsoft Intune.
- **Threat Centric NAC:** Quarantine or restrict noncompliant devices automatically with advanced measures.

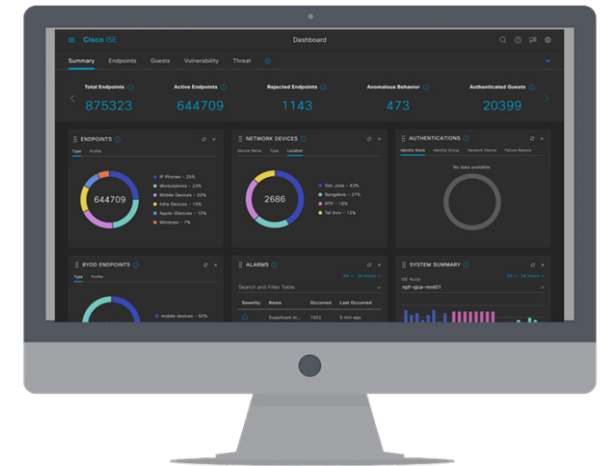


Figure 1. ISE enhances secure network management by streamlining access control, enabling security teams to swiftly identify and address threats.

## How is ISE different?

When upgrading to the Advantage or Premier license, ISE offers these differentiations:

- **Integration into Cisco's broader security ecosystem:** The integration of solutions such as Cisco SD-Access, Cisco Umbrella®, Duo, etc., enhances the platform's ability to detect and respond to advanced threats, providing a more comprehensive security posture compared to standalone solutions.
- **Robust policy-based automation and orchestration:** This reduces the administrative burden and ensures consistent application of security policies across the network.
- **End-to-end visibility and control:** This comprehensive view allows for better monitoring, faster incident response, and more effective policy enforcement compared to competitors that may offer more limited visibility.

## Overview

Added value for ISE customers upgrading to Advantage and Premier licenses include the following:

- **W-Fi 7/wireless refresh:** Customers planning on a wireless update will benefit from the security, performance, and scale of Wi-Fi 7.
- **Segmentation/zero-trust network access:** Customers looking into segmentation options due to increased IoT benefit from the device identification, classification, and segmentation offered by ISE.
- **Enhancing firewall enforcement:** Customers using traditional firewall deployments benefit from more granularity and context from ISE.
- **Security integration with ServiceNow and Microsoft Intune:** Integrating Cisco ISE with ServiceNow and Microsoft Intune streamlines security management by automating incident response and ensuring device compliance, enhancing overall network security and operational efficiency.
- **Security compliance:** ISE ensures compliance with policies and offers comprehensive visibility into network activities. This helps organizations meet various regulatory requirements and improve their overall security posture.
- **IEEE 802.1x access control authentication:** 802.1x support enhances network security, control, and management, and mitigates threats and vulnerabilities that are associated with unauthorized access to network resources.

### Learn more

Discover how moving to ISE Advantage or Premier can deliver immediate benefits, from accelerating your sales cycle to enhancing your security posture. Connect with your Cisco representative or visit the [Cisco ISE webpage](#) to learn more.

You can also get more information on ISE Licensing via the [Cisco ISE Licensing Guide](#).