

Internet Protocol Configuration on CVR100W VPN Routers

Objective

The Internet Protocol (IP) is responsible for delivery of traffic across a network. The CVR100W uses both IPv4 and IPv6 IP modes. These protocols do not require the two end points to confirm connection through a "hand shake" security procedure, which makes them quick and efficient. They also use the best effort delivery methods to direct the packets. This article explains how to configure the IP mode on the CVR100W VPN Router.

Applicable Device

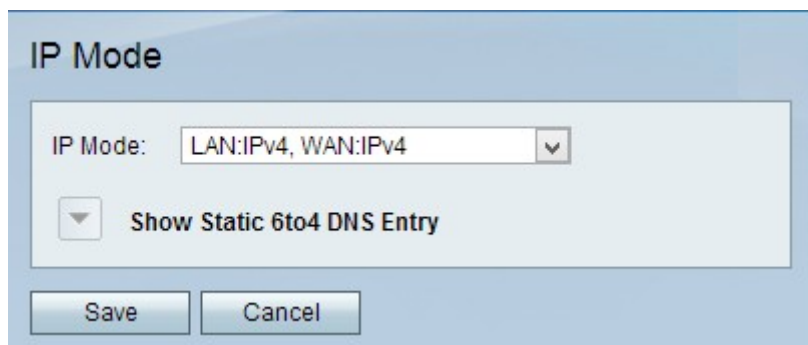
- CVR100W

Software Version

- 1.0.1.19

IP Mode

Step 1. Log in to the web configuration utility and choose **Networking > IP Mode**. The *IP Mode* page opens:



Step 2. From the IP Mode drop-down list, choose one of the following:

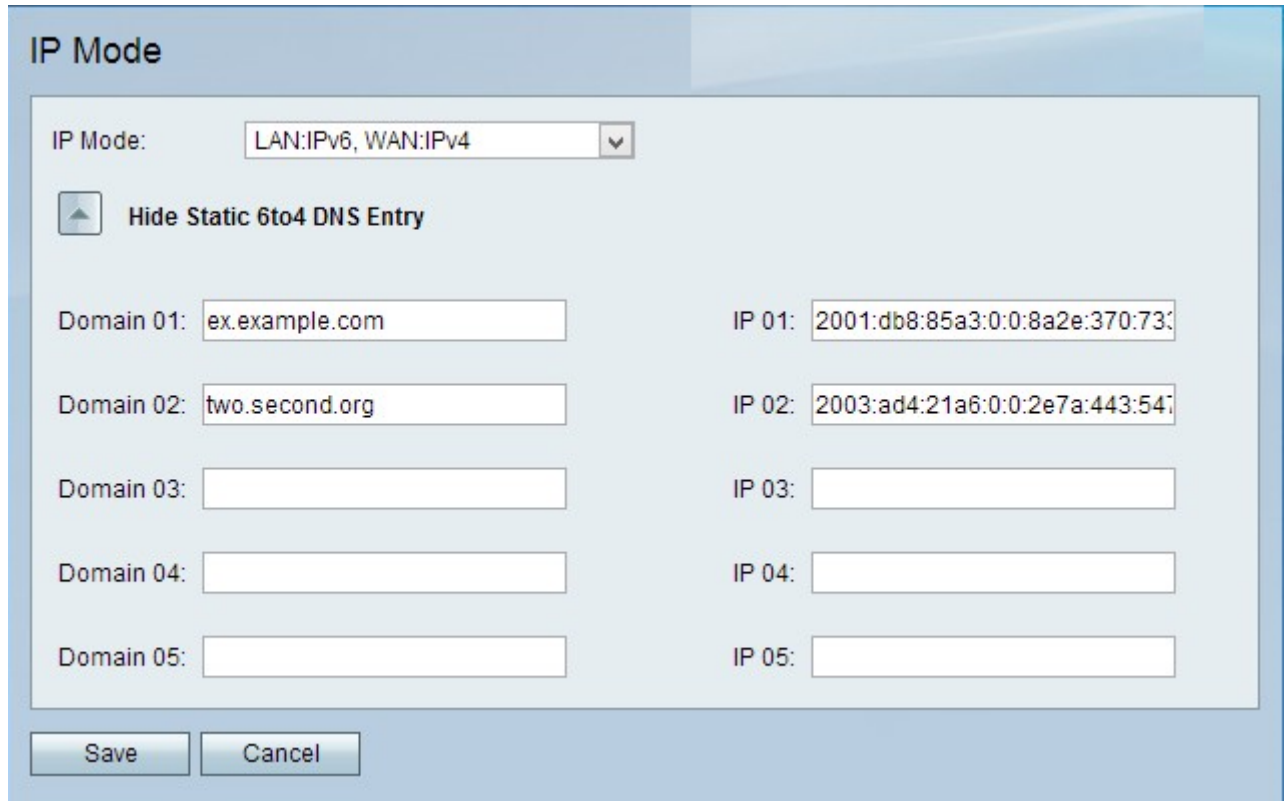
Note: IPv4 is the older, but most common, protocol version used that gives an address to each device connected to the Internet. However, these addresses will eventually run out, so IPv6 was created to succeed the IPv4 and will eventually upgrade the Internet Protocol all together. These two protocols are very similar and can be used for any IP mode specifications below.

- LAN:IPv4, WAN:IPv4 — The LAN and WAN ports both use IPv4.
- LAN:IPv6, WAN:IPv4 — The LAN port uses IPv6 and the WAN port uses IPv4.
- LAN:IPv6, WAN:IPv6 — The LAN and WAN ports both use IPv6.
- LAN:IPv4+IPv6, WAN:IPv4 — The LAN port uses both IPv4 and IPv6 and the WAN port uses IPv4. Both IP modes on one port will work together simultaneously, but packet traffic

will still only use one protocol.

- LAN:IPv4+IPv6, WAN:IPv4+IPv6 — The LAN and WAN ports both use IPv4 and IPv6. Both IP modes on one port will work together simultaneously, but packet traffic will still only use one protocol.

Step 3. (Optional) For all modes, besides the LAN:IPv4, WAN:IPv4 IP mode, the Show Static 6to4 DNS Entry drop-down arrow becomes available. 6to4 is a tunneling feature that allows the user to send IPv6 packets from an IPv6 LAN over an IPv4 WAN network. Click the **Show Static 6to4 DNS Entry** drop-down arrow. The Static 6to4 DNS Entry fields appear:

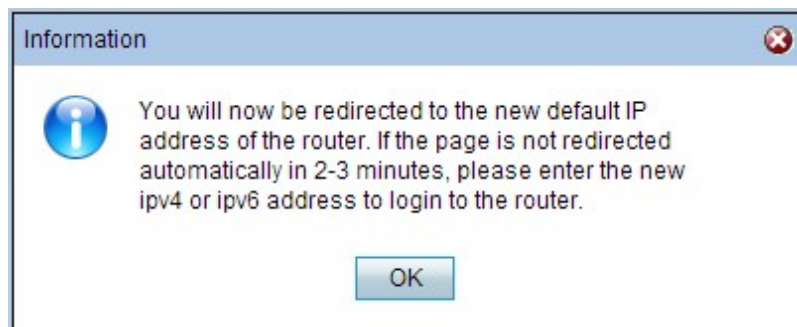


The screenshot shows a configuration window titled "IP Mode". At the top, there is a dropdown menu for "IP Mode" set to "LAN:IPv6, WAN:IPv4". Below this is a button labeled "Hide Static 6to4 DNS Entry" with an upward-pointing arrow. The main area contains five rows of input fields for domain-to-IP mappings. The first row is populated with "ex.example.com" for Domain 01 and "2001:db8:85a3:0:0:8a2e:370:73" for IP 01. The second row has "two.second.org" for Domain 02 and "2003:ad4:21a6:0:0:2e7a:443:54" for IP 02. The remaining three rows (Domain 03-05) are empty. At the bottom of the window are "Save" and "Cancel" buttons.

Step 4. Enter no more than 5 domain-to-IP mappings in the Domain and IP fields. 6to4 mapping is when a domain name is mapped to an IPv6 address.

Step 5. Click **Save**.

Step 6. The *Information* window appears.



Step 7. Click **OK**.

Caution: The device will be assigned a new default IP address in order to change the IP mode.