

# Reboot SPA100 Series through the Web Based Configuration Utility

## Objective

A reboot or restart of the device is made if certain settings of the device have been changed or the device has stopped working properly. A reboot of the device is necessary for some of the new configurations made on the device to take effect or to refresh all the application and services. A periodic reboot is recommended for optimal performance. The objective of this document is to reboot the SPA100 Series Analog Telephone Adapters (ATA) through the web based configuration utility of the device.

## Applicable Devices

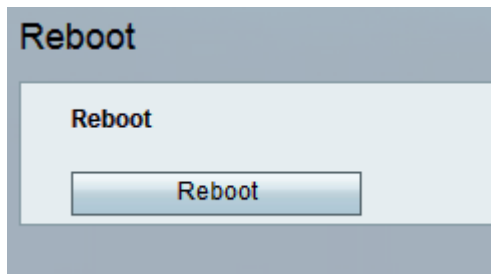
- SPA100 Series Phone Adapters

## Software Version

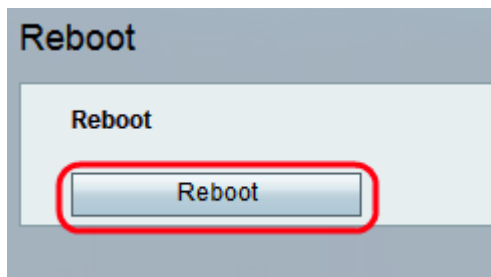
- v1.1.0

## Reboot Procedure

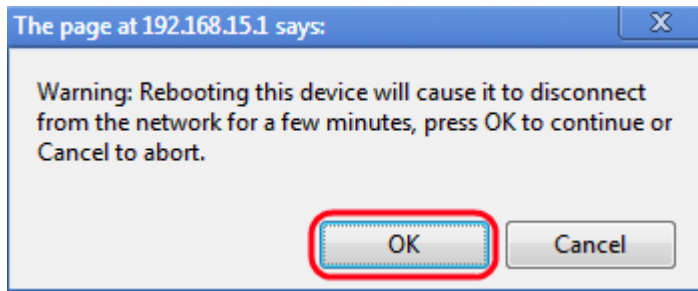
Step 1. Log in to the web configuration utility and choose **Administration > Reboot**. The *Reboot* page opens:



**Note:** All services associated will be restarted during a reboot. It is highly recommended to save any current work before a reboot to prevent any loss of data.



Step 2. Click the **Reboot** button to restart the ATA and all services. A warning message appears.



Step 3. Click **OK** to reboot the ATA when the warning message appears. The administrator is taken back to login page.