



Nexus Dashboard Orchestrator Multi-Fabric and SR-MPLS L3Out Handoff for ACI Fabrics, Release 4.4.1

Table of Contents

Overview and Use Cases	1
Additional Use Cases in NDO Release 4.0(2) and Later	2
Configuration Workflow	3
SR-MPLS Infra Requirements and Guidelines	5
Supported Hardware	5
SR-MPLS Infra L3Out	6
MPLS Custom QoS Policies	7
Greenfield Deployment	8
Creating Custom QoS Policy for SR-MPLS	8
Creating SR-MPLS Infra L3Out	9
Creating SR-MPLS Route Map Policy	13
Creating SR-MPLS Tenant L3Outs in L3Out Templates	15
Configure EPG-to-External-EPG (North-South) Communication	16
Importing Existing SR-MPLSL3Out Configuration	20
Overview of Importing SR-MPLS Configuration	20
Mapping of Fabrics' MOs to NDO Objects and Groups	20
Automatic Import of Dependencies	21
References to Policies in Tenant "Common"	22
Unsupported Scenarios	22
Importing Tenant Policies Template Objects	23
Importing SR-MPLS Objects	26

Overview and Use Cases

Starting with Nexus Dashboard Orchestrator release 3.0(1) and APIC Release 5.0(1), the Multi-Fabric architecture provides better hand-off functionality between ACI border leaf (BL) switches and SR-MPLS networks.

In a typical Multi-Fabric deployment, traffic between fabrics is forwarded over an inter-fabric network (ISN) via VXLAN encapsulation:

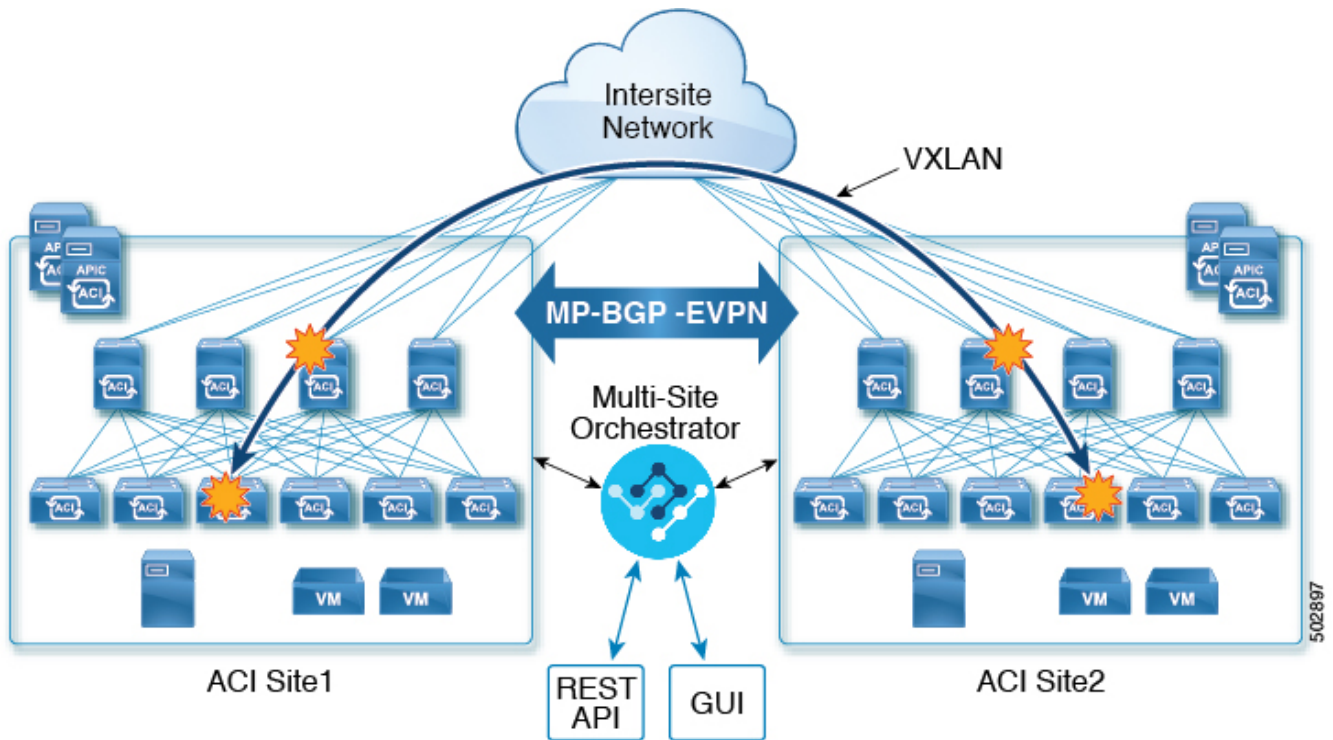


Figure 1. Multi-Fabric and ISN

With Release 3.0(1), MPLS network can be used in addition to or instead of the ISN allowing inter-fabric communication via WAN, as shown in the following figure. In order to force East-West Layer 3 communication to follow the SR-MPLS L3Out data path (instead of the VXLAN data path across the ISN), several restrictions had to be applied to this SR-MPLS hand-off use case:

- The VRF to which the SR-MPLS L3Out belongs must not be stretched across fabrics.
- Because of the above restriction, every fabric must deploy one (or more) local SR-MPLS L3Outs for each defined fabric-local VRF.
- Contracts must not be applied between fabric-local EPGs belonging to different VRFs.

This forces the communication to follow the SR-MPLS L3Out data path.

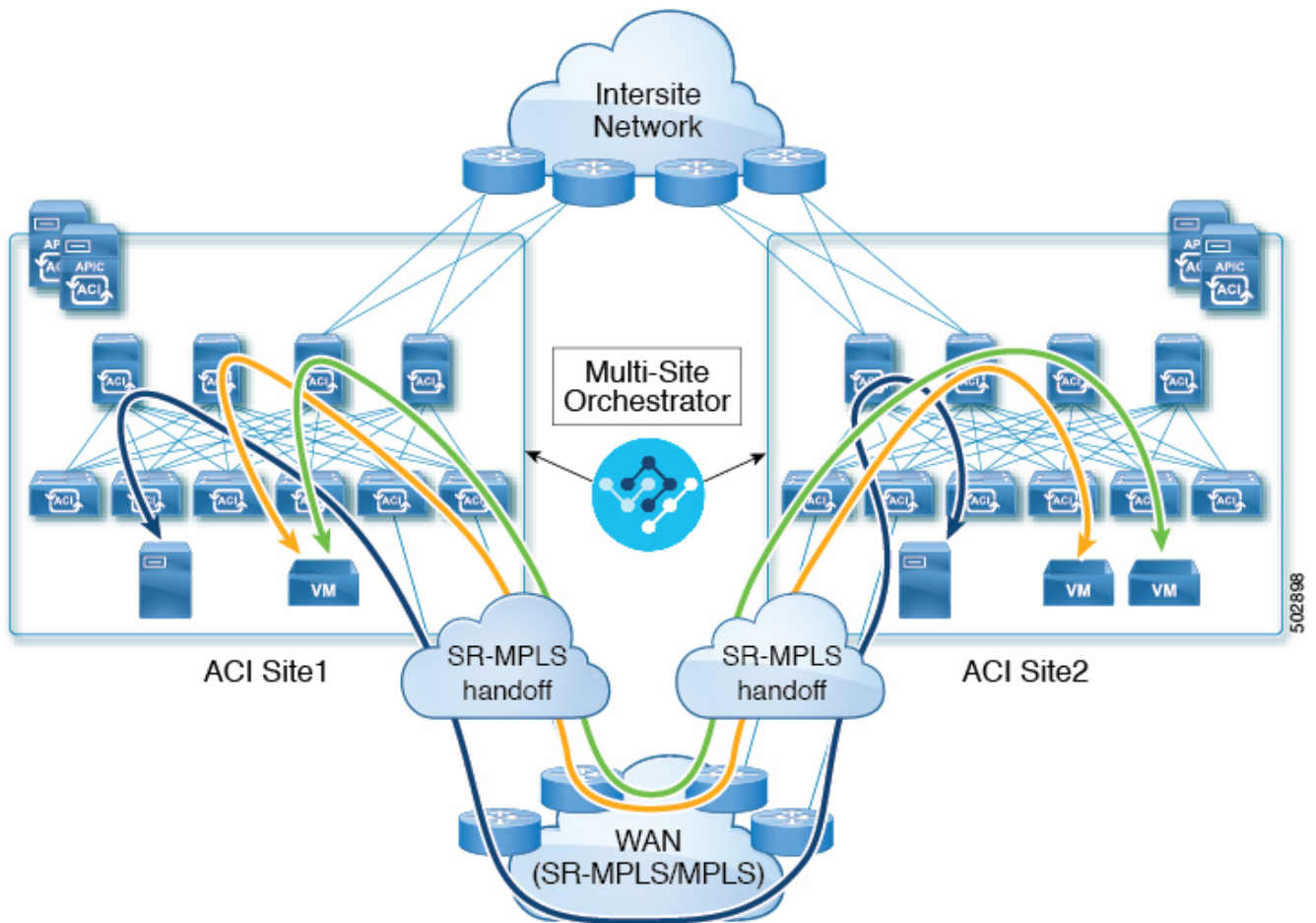


Figure 2. Multi-Fabric and MPLS

Additional Use Cases in NDO Release 4.0(2) and Later

Prior to NDO release 4.0(2), if you wanted to deploy the SR-MPLS use case, you would define a special "SR-MPLS" template that could be associated with only a single fabric and not stretched across multiple fabrics. In this case, if you had two fabrics managed by your Nexus Dashboard Orchestrator and connected via an SR-MPLS network, and you wanted to establish communication between an EPG in **fabric1** and another EPG in **fabric2**, you had to deploy two separate SR-MPLS-VRF-L3Outs (one in each fabric) associated with two separate VRFs and establish contracts between the EPG in each fabric and that fabric's SR-MPLS L3Out (instead of directly between the EPGs). In other words, the EPGs' traffic would always use the SR-MPLS data path even for EPG-to-EPG communication across fabrics without integrating with the traditional Multi-Fabric data plane for East-West traffic.

Beginning with release 4.0(2), the SR-MPLS L3Outs can function similar to the traditional IP-based L3Outs which allows you to use the SR-MPLS L3Out hand-offs exclusively for North-South connectivity between a fabric and an external network, while all East-West traffic can be handled in the traditional Multi-Fabric manner using VXLAN-encapsulated data plane across the ISN. This means that the SR-MPLS hand-offs can now be treated as traditional IP-based hand-offs and the same VRF can deploy a mix of IP and SR-MPLS L3Outs. These changes add support for the following specific use cases:

- Deployment of multiple fabrics each with their own local SR-MPLS-VRF-L3Outs and intra-VRF traffic using the local L3Out if it is available or a remote SR-MPLS-VRF-L3Out from another fabric (inter-fabric L3Out).

In this case, the remote SR-MPLS-VRF-L3Out can be used as a simple backup or to reach unique external prefixes received on the remote SR-MPLS-VRF-L3Out. Traffic will transit from a local EPG to the local SR-MPLS-VRF-L3Out and if that path is down or the route is unavailable it can take another fabric's remote SR-MPLS-VRF-L3Out.

- Similar use cases are supported for shared services, where application EPG in one VRF can use SR-MPLS-VRF-L3Out in a different VRF, either in the local or remote fabric.

In this case, the EPGs can be in a different tenant as well. For example, Tenant1 in Fabric1 can contain the application EPGs which will use an SR-MPLS-VRF-L3Out in Tenant2 in Fabric2.

- Ability to combine IP-based and SR-MPLS hand-offs.

Using SR-MPLS L3Outs (instead of traditional IP-based L3Outs) allows for operational simplification at higher scale by removing the need for the VRF-Lite configuration which requires creation of separate BL nodes, BL logical interfaces, and routing peering for each VRF that needs to be connected to the external network. With the SR-MPLS L3Outs, the logical nodes and logical interfaces are defined once in the infra tenant, together with a single MP-BGP EVPN peering with the external devices. This infra L3Out construct can then be used to provide external connectivity to multiple tenant VRFs and all the VRFs' prefixes are exchanged using the common MP-BGP EVPN control plane.

The following sections describe guidelines, limitations, and configurations specific to managing Schemas that are deployed to fabrics from the Nexus Dashboard Orchestrator. Detailed information about MPLS hand off, supported individual fabric topologies (such as remote leaf support), and policy model is available in the [Cisco APIC Layer 3 Networking Configuration Guide](#).

Configuration Workflow

Other sections in this document detail the required configurations, but in short you will go through the following workflow:

- Create an SR-MPLS QoS policy.

SR-MPLS Custom QoS policy defines the priority of the packets coming from an SR-MPLS network while they are inside the ACI fabric based on the incoming MPLS EXP values defined in the MPLS QoS ingress policy. It also marks the CoS and MPLS EXP values of the packets leaving the ACI fabric through an MPLS interface based on IPv4 DSCP values defined in MPLS QoS egress policy.

This is an optional step and if no custom ingress policy is defined, the default QoS Level (**Level3**) is assigned to packets inside the fabric. If no custom egress policy is defined, the default EXP value of **0** will be marked on packets leaving the fabric.

- Create an SR-MPLS Infra L3Out.

This configures an L3Out for traffic leaving a fabric that is connected to an SR-MPLS network.

The same SR-MPLS Infra L3Out can then be used by multiple SR-MPLS Tenant L3Outs for control and data plane communication with the external network domain.

- Create SR-MPLS route map policy that matches specific Tenant's prefixes.

Route maps are sets of **if-then** rules that enable you to specify which routes are advertised out of the Tenant SR-MPLS L3Out. Route maps also enable you to specify which routes received from the DC-PE routers will be injected into the BGP VPNv4 ACI control plane.

- If you want to deploy a use case similar to releases prior to release 4.0(2), create the VRF, SR-MPLS L3Out, and SR-External EPG for each fabric connected via an SR-MPLS network and establish a contract within each fabric between that fabric's tenant EPG and SR-External EPG.

In this case, all communication from one fabric will follow the North-South route egressing your Multi-Fabric domain towards the external SR-MPLS network. If the traffic is destined to an EPG in another fabric managed by your Orchestrator, it will ingress the other fabric from the external network using that fabric's SR-MPLS L3Out.

- If you want to use the SR-MPLS L3Outs in the same way as the standard IP-based L3Out exclusively for North-South communication, you can create the VRFs, SR-MPLS L3Outs, EPGs, and contracts as you typically would for all existing EPG-to-EPG communication use cases.

SR-MPLS Infra Requirements and Guidelines

If you want to use your Nexus Dashboard Orchestrator to manage SR-MPLS L3Out hand-offs for an ACI fabric connected to an SR-MPLS network:

- Any changes to the topology, such as node updates, are not reflected in the Orchestrator configuration until fabric configuration is refreshed, as described in [Refreshing Fabric Connectivity Information](#).
- Any Multi-Fabric traffic across different fabrics cannot ingress or egress through Remote Leaf switches.

This limitation is not specific to SR-MPLS use cases and applies to all Multi-Fabric traffic in general.

- SR-External EPGs that are part of preferred group cannot be the providers of a shared service (inter-VRF) contract.
- Preferred Group is not supported for inter-fabric SR-MPLS L3Outs.
- vzAny is not supported as a shared service provider.
- VRF that is enabled for Preferred Group cannot be a vzAny consumer.
- We recommend configuring tenant contract objects under dedicated template to avoid circular dependencies with other configuration objects that use the same contracts
- When using SR-MPLS L3Out instead of traditional IP-based L3Outs:
 - Host-based routing advertisement is not supported for bridge domains that are stretched across fabrics.
 - Tenant Routed Multicast (TRM) is not supported with SR-MPLS L3Outs, so they can only be used for establishing Layer 3 unicast communication with the external network domain.

- Beginning with Cisco Nexus Dashboard Orchestrator Release 4.4(1) on Remote Leaf switches with ACI Release 6.1(1), the orchestrator can now utilize a single uplink for both the fabric control and data plane connectivity on sub-interface VLAN 4, while also permitting the configuration of additional sub-interfaces for tenant L3Out (VRF-Lite) and SR-MPLS infrastructure L3Outs. In order to provide connectivity toward the external network domain using local L3Out(s), you need to create **Routed Sub-Interface** on the same fabric port, making **VLAN-ID** a mandatory parameter for the L3Out configuration on the remote leaf.

You can use the same fabric port, used earlier for VXLAN connectivity with ACI Fabric to provide connectivity toward the external network domain using local L3Out(s). It is important to note that the tenant and SR-MPLS L3Outs cannot utilize sub-interface VLAN 4, as this is reserved for the remote leaf fabric interface. For more information about L3Out from remote leaf, see the [Configuring Fabrics That Contain Remote Leaf Switches](#).

Supported Hardware

The SR-MPLS hand-off is supported for the following platforms:

- **Border Leaf switches:** The "FX", "FX2", "GX", and "GX2" switch models.
- **Spine switches:**
 - Modular spine switch models with "LC-EX", "LC-FX", and "GX" at the end of the linecard

names.

- o The Cisco Nexus 9000 series N9K-C9332C, N9K-C9364C, "-GX", and "-GX2" fixed spine switches.

- **DC-PE routers:**

- o Network Convergence System (NCS) 5500 Series
- o ASR 9000 Series
- o NCS 540 or 560 routers

SR-MPLS Infra L3Out

You will need to create an SR-MPLS Infra L3Out for the fabrics connected to SR-MPLS networks as described in the following sections. When creating an SR-MPLS Infra L3Out, the following restrictions apply:

- Each SR-MPLS Infra L3Out must have a unique name.

The SR-MPLS Infra L3Out allows you to establish the control plane and data plane connectivity between the ACI border leaf switches and the external Provider Edge (PE) devices. SR-MPLS L3Outs that belong to various tenant VRFs can then leverage that Infra L3Out connectivity to establish communication with the external network domain.

- You can have multiple SR-MPLS infra L3Outs connecting to different routing domains, where the same border leaf switch can be in more than one L3Out, and you can have different import and export routing policies for the VRFs toward each routing domain.
- Even though a border leaf switch can be in multiple SR-MPLS infra L3Outs, a border leaf switch/provider edge router combination can only be in one SR-MPLS infra L3Out as there can be only one routing policy for a user VRF/border leaf switch/DC-PE combination.
- If there is a requirement to have SR-MPLS connectivity from multiple pods and remote locations, ensure that you have a different SR-MPLS infra L3Out in each of those pods and remote leaf locations with SR-MPLS connectivity.
- If you have a Multi-Pod or Remote Leaf topology where one of the pods is not connected directly to the SR-MPLS network, that pod's traffic destined for the SR-MPLS network will use standard IPN path to another pod, which has an SR-MPLS L3Out. Then the traffic will use the other pod's SR-MPLS L3Out to reach its destination across SR-MPLS network.

This also can apply to Multi-Fabric deployments where North-South communication for the endpoints in **Fabric 1** can be established via an SR-MPLS L3Out connection in **Fabric 2**.

- Routes from multiple VRFs can be advertised from one SR-MPLS Infra L3Out to provider edge (PE) routers connected to the nodes in this SR-MPLS Infra L3Out.

PE routers can be connected to the border leaf directly or through other provider (P) routers.

- The underlay configuration can be different or can be the same across multiple SR-MPLS Infra L3Outs for one location.

For example, assume the same border leaf switch connects to PE-1 in domain 1 and PE-2 in domain 2, with the underlay connected to another provider router for both. In this case, two SR-MPLS Infra L3Outs will be created: one for PE-1 and one for PE-2. But for the underlay, it's the

same BGP peer to the provider router. Import/export route-maps will be set for EVPN session to PE-1 and PE-2 based on the corresponding route profile configuration in the user VRF.

MPLS Custom QoS Policies

Following is the default MPLS QoS behavior:

- All incoming MPLS traffic on the border leaf switch is classified into QoS Level 3 (the default QoS level).
- The border leaf switch will retain the original DSCP values for traffic coming from SR-MPLS without any remarking.
- The border leaf switch will forward packets with the default MPLS EXP (0) to the SR-MPLS network.

Following are the guidelines and limitations for configuring MPLS Custom QoS policies:

- Data Plane Policers (DPP) are not supported at the SR-MPLS L3Out.
- Layer 2 DPP works in the ingress direction on the MPLS interface.
- Layer 2 DPP works in the egress direction on the MPLS interface in the absence of an egress custom MPLS QoS policy.
- VRF level policing is not supported.

include::multi-fabric-and-sr-mpls-l3out-handoff/multi-fabric-tenants-srmpis-guidelines.adoc

Greenfield Deployment

Creating Custom QoS Policy for SR-MPLS

SR-MPLS Custom QoS policy defines the priority of the packets coming from an SR-MPLS network while they are inside the ACI fabric based on the incoming MPLS EXP values defined in the MPLS QoS ingress policy. It also marks the CoS and MPLS EXP values of the packets leaving the ACI fabric through an MPLS interface based on IPv4 DSCP values defined in MPLS QoS egress policy.



Creating custom QoS policy is optional. If no custom ingress policy is defined, the default QoS Level (**Level3**) is assigned to packets inside the fabric. If no custom egress policy is defined, the default EXP value of **0** will be marked on packets leaving the fabric.

1. Log in to your Cisco Nexus Dashboard and open the Cisco Nexus Dashboard Orchestrator service.
2. Create a new Fabric Policy.
 - a. From the left navigation pane, choose **Configure > Fabric Template > Fabric Policies**.
 - b. On the **Fabric Policy Templates** page, click **Create Fabric Policy Template**.
 - c. From the **+Create Object** drop-down, select **QoS SR-MPLS**.
 - d. In the right properties sidebar, provide the **Name** for the policy.
 - e. (Optional) Click **Add Description** and provide a description for the policy.
3. Click **Add Ingress Rule** to add an ingress QoS translation rule.

These rules are applied for traffic that is ingressing the ACI fabric from an MPLS network and are used to map incoming packet's experimental bits (EXP) values to ACI QoS levels, and set DSCP or CoS values that the packet should have set when forwarded to an endpoint connected to the fabric.

The values are derived at the border leaf switch using a custom QoS translation policy. If a custom policy is not defined or not matched, default QoS Level (**Level3**) is assigned.

- a. In the **Match EXP From** and **Match EXP To** fields, specify the EXP range of the ingressing MPLS packet you want to match.
- b. From the **Queuing Priority** drop-down, select the ACI QoS Level to map.

This is the QoS Level that you want to assign for the traffic within ACI fabric, which ACI uses to prioritize the traffic within the fabric. The options range from Level 1 to Level 6. The default value is **Level3**. If you do not make a selection in this field, the traffic will automatically be assigned a **Level3** priority.

- c. From the **Set DSCP** drop-down, select the DSCP value to be used when sending the unencapsulated packet to an endpoint connected to the fabric.

The DSCP value that is specified is set in the original traffic that is received from the external network, so it will be reexposed only when the traffic is VXLAN decapsulated on the destination ACI leaf node.

If you set the value to **Unspecified**, the original DSCP value of the packet will be retained.

- d. From the **Set CoS** drop-down, select the CoS value to be used when sending the unencapsulated packet to an endpoint connected to the fabric.

The CoS value that is specified will be reexposed only when the traffic is VXLAN decapsulated on the destination ACI leaf node.

If you set the value to **Unspecified**, the original CoS value of the packet will be retained.

In both of the above cases, the CoS preservation option must be enabled in the fabric. For more information about CoS preservation, see [Cisco APIC and QoS](#).

- e. Click the check mark icon to save the rule.
- f. Repeat this step for any additional ingress QoS policy rules.

4. Click **Add Egress Rule** to add an egress QoS translation rule.

These rules are applied for the traffic that is leaving the ACI fabric through an MPLS L3Out and are used to map the packet's IPv4 DSCP value to the MPLS packet's EXP value and the internal Ethernet frame's CoS value.

The setting of the packet's IPv4 DSCP value is done at the nonborder leaf switch based on existing policies that are used for EPG and L3Out traffic. If a custom policy is not defined or not matched, the default EXP value of **0** is marked on all labels. EXP values are marked in both, default and custom policy scenarios, and are done on all MPLS labels in the packet.

Custom MPLS egress policy can override existing EPG, L3Out, and Contract QoS policies.

- a. Using the **Match DSCP From** and **Match DSCP To** dropdowns, specify the DSCP range of the ACI fabric packet you want to match for assigning the egressing MPLS packet's priority.
 - b. From the **Set MPLS EXP** drop-down, select the EXP value that you want to assign to the egressing MPLS packet.
 - c. From the **Set CoS** drop-down, select the CoS value that you want to assign to the egressing MPLS packet.
 - d. Click the check mark icon to save the rule.
 - e. Repeat this step for any additional egress QoS policy rules.
5. From the **Actions** menu, select **Add/Remove Fabrics** and choose the SR-MPLS fabric with which to associate this template.
 6. Click **Save** to save the template policy.
 7. Click **Deploy** to deploy the fabric policy to the fabrics.

What to do next:

After you have created the QoS policy, enable MPLS connectivity and configure MPLS L3Out as described in [Creating SR-MPLS Infra L3Out](#).

Creating SR-MPLS Infra L3Out

Before you begin:

You must have:

- Added a fabric that is connected through SR-MPLS network as described in [Adding Cisco ACI Fabrics](#).
- If necessary, created SR-MPLS QoS policy as described in [Creating Custom QoS Policy for SR-MPLS](#).

This section describes how to configure SR-MPLS Infra L3Out settings for a fabric that is connected to an SR-MPLS network.

- The SR-MPLS infra L3Out is configured on the border leaf switch, which is used to set up the underlay BGP-LU and overlay MP-BGP EVPN sessions that are needed for the SR-MPLS hand-off.
- An SR-MPLS infra L3Out will be scoped to a pod or a remote leaf switch fabric.
- Border leaf switches or remote leaf switches in one SR-MPLS infra L3Out can connect to one or more provider edge (PE) routers in one or more routing domains.
- A pod or remote leaf switch fabric can have one or more SR-MPLS infra L3Outs.
 1. Ensure that SR-MPLS Connectivity is enabled for the fabric.
 - a. In the main navigation menu, select **Configure > Fabric To Fabric Connectivity**.
 - b. In the **Fabric To Fabric Connectivity** page, click **Configure**.
 - c. In the left pane, under **Fabrics**, select the specific fabric that is connected through SR-MPLS.
 - d. In the right **<Fabric> Settings** pane, enable the **SR-MPLS Connectivity** and provide the SR-MPLS information.

- The **Segment Routing Global Block (SRGB) Range** is the range of label values that are reserved for Segment Routing (SR) in the Label Switching Database (LSD). The Segment ID (SID) is a unique identifier for a specific segment and is configured on each node for the MPLS transport loopback. The SID index, which you configure later as part of the border leaf switch configuration, is advertised using BGP-LU to the peer router, and the peer router uses the SID index to calculate the local label.

The default range is **16000-23999**.

- The **Domain ID Base** enables the BGP Domain-Path feature. For more information, see [Cisco APIC Layer 3 Networking Configuration Guide](#).

If you choose to provide a value in this field to enable the Domain-Path feature, ensure that you use a unique value for each SR-MPLS fabric in your Multi-Fabric domain, which will be specific to this ACI fabric.

2. In the main pane, click **+Add SR-MPLS L3Out** within a pod.
3. In the right **Properties** pane, provide a name for the SR-MPLS L3Out.
4. (Optional) From the **QoS Policy** drop-down, select a QoS Policy that you created for SR-MPLS traffic.

Select the QoS policy that you created in [Creating Custom QoS Policy for SR-MPLS](#).

Otherwise, if you do not assign a custom QoS policy, the following default values are assigned:

- All incoming MPLS traffic on the border leaf switch is classified into QoS Level 3 (the default QoS level).
- The border leaf switch does the following:
 - Retains the original DSCP values for traffic coming from SR-MPLS without any remarking.
 - Forwards packets to the MPLS network with the original CoS value of the tenant traffic if the CoS preservation is enabled.
 - Forwards packets with the default MPLS EXP value (0) to the SR-MPLS network.
- In addition, the border leaf switch does not change the original DSCP values of the tenant traffic coming from the application server while forwarding to the SR network.

5. From the **L3 Domain** drop-down, select the Layer 3 domain.

6. Configure settings for border leaf switches and ports that are connected to the SR-MPLS network.

You must provide information about the border leaf switches and the interface ports which connect to the SR-MPLS network.

- a. Click **+Add Leaf** to add a leaf switch.
- b. In the **Add Leaf** window, select the leaf switch from the **Leaf Name** drop-down.
- c. In the **SID Index** field, provide a valid segment ID (SID) offset.

When configuring the interface ports later in this section, you are able to choose whether you want to enable segment routing. The SID index is configured on each node for the MPLS transport loopback. The SID index value is advertised using BGP-LU to the peer router, and the peer router uses the SID index to calculate the local label. If you plan to enable segment routing, you must specify the segment ID for this border leaf switch.

If you must update the SID index value, you must first delete it from all SR-MPLS L3Outs in the leaf switch and redeploy the configuration. Then you can update it with the new value, followed by redeploying the new configuration.

- d. Provide the local **Router ID**.

Unique router identifier within the fabric.

- e. Provide the **BGP EVPN Loopback** address.



The BGP EVPN Loopback address must be the same for the selected leaf switch across all SR-MPLS L3Outs in the fabric.

The BGP-EVPN loopback is used for the BGP-EVPN control plane session. Use this field to configure the MP-BGP EVPN session between the EVPN loopback addresses of the border leaf switch and the DC-PE to advertise the overlay prefixes. The MP-BGP EVPN sessions are established between the BGP-EVPN loopback and the BGP-EVPN remote peer address, which you configure in the "Add Interface" substep below.

While you can use a different IP address for the BGP-EVPN loopback and the MPLS transport loopback, we recommend that you use the same loopback for the BGP-EVPN and the MPLS transport loopback on the ACI border leaf switch.

- f. Provide the **MPLS Transport Loopback** address.

The MPLS transport loopback is used to build the data plane session between the ACI border leaf switch and the DC-PE, where the MPLS transport loopback becomes the next-hop for the prefixes that are advertised from the border leaf switches to the DC-PE routers.

While you can use a different IP address for the BGP-EVPN loopback and the MPLS transport loopback, we recommend that you use the same loopback for the BGP-EVPN and the MPLS transport loopback on the ACI border leaf switch.

- g. Click **Add Interface** to provide switch interface details.

From the **Interface Type** drop-down, select whether it is a Layer 3 physical interface or a port channel interface. If you choose to use a port channel interface, it must have been already created on the APIC.

Then provide the interface, its IP address, and MTU size. If you want to use a subinterface, provide the **VLAN ID** for the subinterface, otherwise leave the VLAN ID field blank.



If you are creating the L3Out template on a remote leaf using a single uplink on the fabric port, you need to create **Routed Sub-Interface** selecting the same fabric port from **Interfaces** dropdown menu.

This mandates the **Encap Type** to **VLAN** and you need to provide the VLAN ID in the **Encap Value** field. For more information about remote leaf switches and their configuration in APIC, see the [Cisco APIC Layer 3 Networking Configuration Guide](#).

+ In the **BGP-Label Unicast Peer IPv4 Address** and **BGP-Label Unicast Remote AS Number**, specify the BGP-LU peer information of the next hop device, which is the device that is connected directly to the interface. The next hop address must be part of the subnet that is configured for the interface.

+ Choose whether you want to enable an MPLS or an SR-MPLS hand-off.

+ (Optional) Choose to enable the additional BGP options based on your deployment.

+ Finally, click the check mark to the right of the **Interface Type** drop-down to save interface port information.

- h. Repeat the previous substep for all interfaces on the switch that connect to the MPLS network.
- i. Click **Save** to save the leaf switch information.
- j. Repeat this step for all leaf switches connected to the MPLS networks.

7. Configure BGP-EVPN connectivity.

You must provide BGP connectivity details for the BGP EVPN connection between the fabric's border leaf switch (BL) switches and the provider edge (PE) router.

- a. Click **+Add BGP-EVPN Connectivity**.
- b. In the **Add MPLS BGP-EVPN Connectivity** window, provide the details.

For the **MPLS BGP-EVPN Peer IPv4 Address** field, provide the loopback IP address of the DC-PE router, which is not necessarily the device that is connected directly to the border leaf switch.

For the **Remote AS Number**, enter a number that uniquely identifies the neighbor autonomous system of the DC-PE. The Autonomous System Number can be in 4 byte as plain format 1-4294967295. Keep in mind, ACI supports only **asplain** format and not **asdot** or **asdot+** format AS numbers. For more information on ASN formats, see [Explaining 4-Byte Autonomous System \(AS\) ASPLAIN and ASDOT Notation for Cisco IOS](#) document.

For the **TTL** field, specify a number large enough to account for multiple hops between the border leaf switch and the DC-PE router, for example **10**. The allowed range is **2-255** hops.

(Optional) Choose to enable the additional BGP options based on your deployment.

- c. Click **Save** to save BGP settings.
- d. Repeat this step to for any additional BGP connections.

Typically, you would be connecting to two DC-PE routers, so provide BGP peer information for both connections.

8. Deploy the changes to fabrics.

What to do next:

After you have enabled and configured MPLS connectivity, you can create and manage Tenants, route maps, and schemas as described in the [Multi-Fabric Configuration Guide, Release 3.0\(x\)](#).

Creating SR-MPLS Route Map Policy

This section describes how to create a route map policy. Route maps are sets of **if-then** rules that enable you to specify which routes are advertised out of the Tenant SR-MPLS L3Out. Route maps also enable you to specify which routes that are received from the DC-PE routers will be injected into the BGP VPNv4 ACI control plane.

You will use the SR-MPLS route map policy in the next section when defining fabric-local settings for the Tenant SR-MPLS L3Out.

1. Log in to your Cisco Nexus Dashboard and open the Cisco Nexus Dashboard Orchestrator service.
2. Create a new Tenant Policy.
 - a. From the left navigation pane, choose **Configure > Tenant Template > Tenant Policies**.
 - b. On the **Tenant Policy Templates** page, click **Create Tenant Policy Template**.
 - c. In the Tenant Policies page's right properties sidebar, provide the **Name** for the tenant.
 - d. From the **Select a Tenant** drop-down, choose the tenant with which you want to associate this template.

All the policies that you create in this template as described in the following steps will be associated with the selected tenant and deployed to it when you push the template to one or more fabrics.

By default, the new template is empty, so you must add one or more tenant policies as described in the following steps. You don't have to create every policy available in the template - you can create a template with just a single route map policy for your SR-MPLS use case.

3. Create a Route Map Policy for Route Control.

- a. From the **+Create Object** drop-down, select **Route Map Policy for Route Control**.
- b. In the right properties sidebar, provide the **Name** for the policy.
- c. (Optional) Click **Add Description** and provide a description for the policy.
- d. Click **+Add Entry** and provide the route map information.

For each route map, you must create one or more context entries. Each entry is a rule that defines an action based on one or more matching criteria based on the following information:

- **Context Order** - Context order is used to determine the order in which contexts are evaluated. The value must be in the 0-9 range.
- **Context Action** - Context action defines the action to perform (permit or deny) if a match is found. If the same value is used for multiple contexts, they are evaluated one in the order in which they are defined.

When the context order and action are defined, choose how you want to match the context:

- Click **+Create Attribute** to specify the action that will be taken should the context match.

You can choose one of the following actions:

- **Set Community**
- **Set Route Tag**
- **Set Dampening**
- **Set Weight**
- **Set Next Hop**
- **Set Preference**
- **Set Metric**
- **Set Metric Type**
- **Set AS Path**
- **Set Additional Community**

After you have configured the attribute, click **Save**.

- If you want to associate the action that you defined with an IP address or prefix, click **Add IP Address**.
- In the Prefix field, provide the IP address prefix. Both IPv4 and IPv6 prefixes are supported, for example, **2003:1:1a5:1a5::/64** or **205.205.0.0/16**.

If you want to aggregate IPs in a specific range, check the **Aggregate** check box and provide the range. For example, you can specify **0.0.0.0/0** prefix to match any IP or you can specify **10.0.0.0/8** prefix to match any **10.x.x.x** addresses.

- If you want to associate the action that you defined with community lists, click **Add Community**.

In the **Community** field, provide the community string. For example, **regular:as2-nn2:200:300**.

Then choose the **Scope**: **Transitive** means that the community will be propagated across eBGP peering (across autonomous systems) while **Non-Transitive** means the community will not be propagated.



You must specify an **IP address** or a **Community** string to match a specific prefix (even if you do not provide a **Set** attribute) because it defines the prefixes that must be announced out of the L3Out. This can be either BDs' subnets or transit routes learned from other L3Outs.

- e. Repeat the previous substeps to create any additional route map entries for the same policy.
 - f. Click **Save** to save the policy and return to the template page.
 - g. Repeat this step to create any additional Route Map for Route Control policies.
4. From the **Actions** menu, select **Add/Remove Fabrics** and choose one or more SR-MPLS fabrics with which to associate this template.
 5. From the **Actions** menu, select **Add/Remove Fabrics** and choose one or more SR-MPLS fabrics with which to associate this template.
 6. Click **Deploy** to deploy the tenant policy to the fabrics.

Creating SR-MPLS Tenant L3Outs in L3Out Templates

Beginning with NDO release 4.1(1), L3Out and SR-MPLS L3Out configuration has moved out of application templates and into dedicated L3Out templates. Before you can configure connectivity across an SR-MPLS network, you must create L3Out templates and define the SR-MPLS L3Outs for each fabric as described in this section.

1. Log in to your Nexus Dashboard and open the Nexus Dashboard Orchestrator service.
2. Create a new L3Out template.
 - a. From the left navigation pane, choose **Configure > Tenant Template > L3Out**.
 - b. On the **L3Out Templates** page, click **Create L3Out Template**.
 - c. In the **Select a Tenant and Fabric** dialog, choose the tenant and fabric with which you want to associate this template, then click **Save and go to template**.

Each L3Out template is associated with a specific tenant similar to other NDO templates, however it is also assigned to a single fabric only as L3Out configuration is typically fabric-specific.

If you want to define L3Out configuration for multiple fabrics, you must create at least one L3Out template for each fabric, but you can deploy multiple L3Outs per fabric/tenant by

defining all of them in the same L3Out template. You may have multiple L3Out templates per fabric as long as they are assigned to different tenants.

d. In the template view, provide the **Name** for the template.

3. Create SR-MPLS L3Out(s).

a. In the main pane, choose **Create Object SR-MPLS L3Out**.

b. Provide the **Name** for the L3Out.



We recommend providing unique names for all SR-MPLS L3Outs across fabrics, even if they belong to the same tenant or allow connectivity to the same external resources.

c. Click **Select VRF**> and choose a VRF to associate with this SR-MPLS L3Out.



This step assumes you have a VRF already defined for this SR-MPLS L3Out. If you do not, you can close the template page, define the VRF in an application template as you typically would, and then resume SR-MPLS L3Out creation from this step.

d. Click **Add SR-MPLS L3Out**.

e. In the **Add SR-MPLS L3Out** dialog that opens, choose the **SR-MPLS Infra L3Out** that you defined in [Creating SR-MPLS Infra L3Out](#).

f. Click **Add Route Map Policy** and choose the route map policy that you defined in [Creating SR-MPLS Route Map Policy](#) and whether it's an **Import** or **Export** policy.

You can repeat this substep if you want to add multiple route map policies to your SR-MPLS L3Out.

g. Repeat this step for all SR-MPLS L3Outs you want to create for this specific fabric and tenant.

4. In the template view, click **Deploy** to deploy the template to the fabric.

5. Repeat this process to create a separate L3Out template for each fabric with that fabric's SR-MPLS L3Out(s).

The next section assumes a use case in which two SR-MPLS L3Outs were created in two different fabrics, for example `mpls-l3out-1` and `mpls-l3out-2`

Configure EPG-to-External-EPG (North-South) Communication

This section describes how to establish North-South communication between an application EPG and an external SR-MPLS network. You can also use this approach to enable EPG-to-EPG communication across fabrics through the SR-MPLS L3Out data path (leveraging the external SR-MPLS network).

If instead you want to establish EPG-to-EPG inter-fabric connectivity through the VXLAN data plane across the ISN which is supported starting with release 4.0(2), you can simply establish a contract relationship between those EPGs as you typically would.

1. Choose the template or create a new one.

You can select the template as you typically would for other ACI fabric use cases:

- a. In the main navigation menu, select **Configure > Tenant Template > Applications > Schemas**.
 - b. Select an existing schema or create a new one.
 - c. Select an existing template or click **Create New Template** and select **ACI Multi-Cloud** for template type.
 - d. Select the tenant for the new template.
 - e. (Optional) Enable the **Autonomous** option for the template if you plan to deploy this template only to fabrics that do not have any inter-fabric connectivity to other fabrics.
2. Create a VRF.
 - a. From the **+Create Object** menu, choose **VRF**.
 - b. In the right properties sidebar, provide the name for the VRF.
 3. Create an SR-External EPG.



If you assign the template that contains SR-External EPG to multiple fabrics, the EPG will be stretched to all those fabrics. In this case, each fabric must have a local SR-MPLS L3Out or you will not be allowed to deploy that template to all associated fabrics.

- a. From the **+Create Object** menu, choose **SR-External EPG**.
 - b. In the right properties sidebar, provide the name for the external EPG.
 - c. From the **Virtual Routing & Forwarding** drop-down, choose the VRF you created in the previous step.
 - d. From the **L3Out** drop-down, choose the SR-MPLS L3Out you created in [Creating SR-MPLS Tenant L3Outs in L3Out Templates](#).
 - e. Click **+Add Subnet** and define a subnet and its route control options as you typically would.
- If you want to define multiple subnets, repeat this substep.
4. Assign the template to a single fabric or to multiple fabrics, depending on the specific use case you must configure.
 5. Select the fabric-local settings for the template that you are configuring.

In the following few steps, you configure fabric local settings for the VRF and SR-External EPG you created in the previous steps.

6. Configure fabric-local settings for the VRF.

You must provide BGP route information for the VRF used by the SR-MPLS L3Out.

- a. In the main pane, scroll down to **VRF** area and select the VRF you created in the previous step.
- b. From the **Address Family** drop-down, select whether it is IPv4 or IPv6 address.
- c. In the **Route Target** field, provide the route string.



Configuration of the import/export route-target values must be consistent

with the configuration that is deployed on the DC-PE device and depends on the specific use case being deployed.

For example, `route-target:ipv4-nn2:1.1.1.1:1901`.

- d. From the **Type** drop-down, select whether to import or export the route.
 - e. Click **Save** to save the route information.
 - f. (Optional) Repeat this step to add any additional BGP route targets.
7. Create and configure an application EPG as you typically would.



The EPG can be in the same or different template and schema.

8. Create a contract between the application EPG and the SR-External EPG.
9. Deploy the configuration.
- a. In the main pane of the **Schemas** view, click **Deploy to Fabrics**.
 - b. In the **Deploy to Fabrics** window, verify the changes that will be pushed to the fabric and click **Deploy**.



Starting from release 4.0(2), it is possible to use the EPG-to-SR-External-EPG contracts exclusively for North-South traffic (communication with resources external to the ACI fabrics), similar to the traditional IP-based L3Outs. In that case, EPG-to-EPG inter-fabric communication can be enabled through the VXLAN data path across the ISN by simply creating a contract relationship between those EPGs.

However, if you want to establish EPG-to-EPG (East-West) communication between EPGs in different fabrics across the external SR-MPLS network, you can do that as outlined in the next step.

10. If you want to use the SR-MPLS L3Out data path for EPG-to-EPG traffic across fabrics (leveraging the SR-MPLS external network instead of the VXLAN data path across the ISN), you can establish contracts between each fabric-local EPG and the SR-External EPG associated to the tenant SR-MPLS L3Out.

The SR-External EPG can be deployed as a fabric-local object in each fabric or as a stretched object across fabrics. Note that using the SR-MPLS L3Out data path for EPG-to-EPG traffic across fabrics is only possible if there are no direct contract relationships between those EPGs or between each EPG and any other remote EPG.

- a. Create two application EPGs as you typically would in templates that are associated to different fabrics.

For example, `epg1` and `epg2`.

These EPGs can be in the same or different VRFs or Tenants.

- b. Create two separate fabric-local SR-External EPGs or a single stretched SR-External EPG.

If you are creating separate SR-External EPGs, they can be in the same or different VRFs or Tenants and the same template or different templates depending on the specific deployment

scenario.



In contrast with regular External EPGs where you associate an L3Out explicitly, there is only one SR-MPLS L3Out per VRF so when you create the SR-External EPGs, you associate them with the same VRF as you used for your SR-MPLS Tenant L3Outs that you created in [Creating SR-MPLS Tenant L3Outs in L3Out Templates](#).

For example, the next step assumes you create `mpls-extepg-1` and `mpls-extepg-2`.

- c. Create a contract that you use to allow traffic between each fabric local EPG and SR-MPLS L3Out local connection.

You must create and define a filter for the contract as you typically would.

- d. Assign the contracts to the appropriate EPGs.

To allow traffic between the two application EPGs you created, you will actually need to assign the contract twice: when between `epg1` and its `mpls-extepg-1` and then again between `epg2` and its `mpls-extepg-2`. It's possible to have the same SR-External EPG instead of two separate ones if it is stretched across fabrics.

As an example, if you want `epg1` to provide a service to `epg2`, you would:

- Assign the contract to `epg1` with type `provider`.
- Assign the contract to `mpls-extepg-1` with type `consumer`.
- Assign the contract to `epg2` with type `consumer`.
- Assign the contract to `mpls-extepg-2` with type `provider`.

Importing Existing SR-MPLSL3Out Configuration

Overview of Importing SR-MPLS Configuration

Beginning with release 4.1(2), Nexus Dashboard Orchestrator (NDO) supports importing existing SR-MPLS configurations from the APIC fabrics. The following sections focus on the steps required



If you want to configure and deploy new SR-MPLS configurations (greenfield deployment), see the earlier sections of this chapter.

This release supports importing the following policies.

- **Route Maps** - may be referenced in the L3Out template's **Outbound Route Map** and **Inbound Route Map** fields to define route import and export policies.
- L3Out Node Routing:
 - Nodes configured for an L3Out can be associated to a node group, which in turn can refer to a node routing policy.
 - Node groups can also reference BGP Peer Prefix policy when configuring BGP peers for the nodes.
- **L3Out Interface Routing:**
 - Interfaces configured for an L3Out can be associated to an interface group, which can refer to an interface routing policy and BGP Peer Prefix policy
 - Interface groups can also reference BGP Peer Prefix policy when configuring BGP peers for the interfaces.
- **BGP Peer Prefix** - can be referenced by the node and interfaces groups for BGP peer configuration on all nodes in the group.
- **IPSLA Monitoring policies and IPSLA Track lists** - can be referenced by the static routes defined for a node

Mapping of Fabrics' MOs to NDO Objects and Groups

Note that in some cases there is no 1:1 mapping between the managed objects (MOs) created in the fabric and the policy objects as they are seen on and managed by the Orchestrator. In these cases, when you import an L3Out from APIC, NDO creates imports the MOs using NDO-specific logical groups; for example, the following APIC policies are grouped on import:

- The following MOs are grouped into an L3Out Node Routing policy on NDO:
 - BGP Timer Policy
 - BGP Best Path Policy
 - BFD Multi-Hop Node Policy

The following figure shows the **L3Out Node Routing Policy** object in NDO that groups together the 3 policies mentioned above:

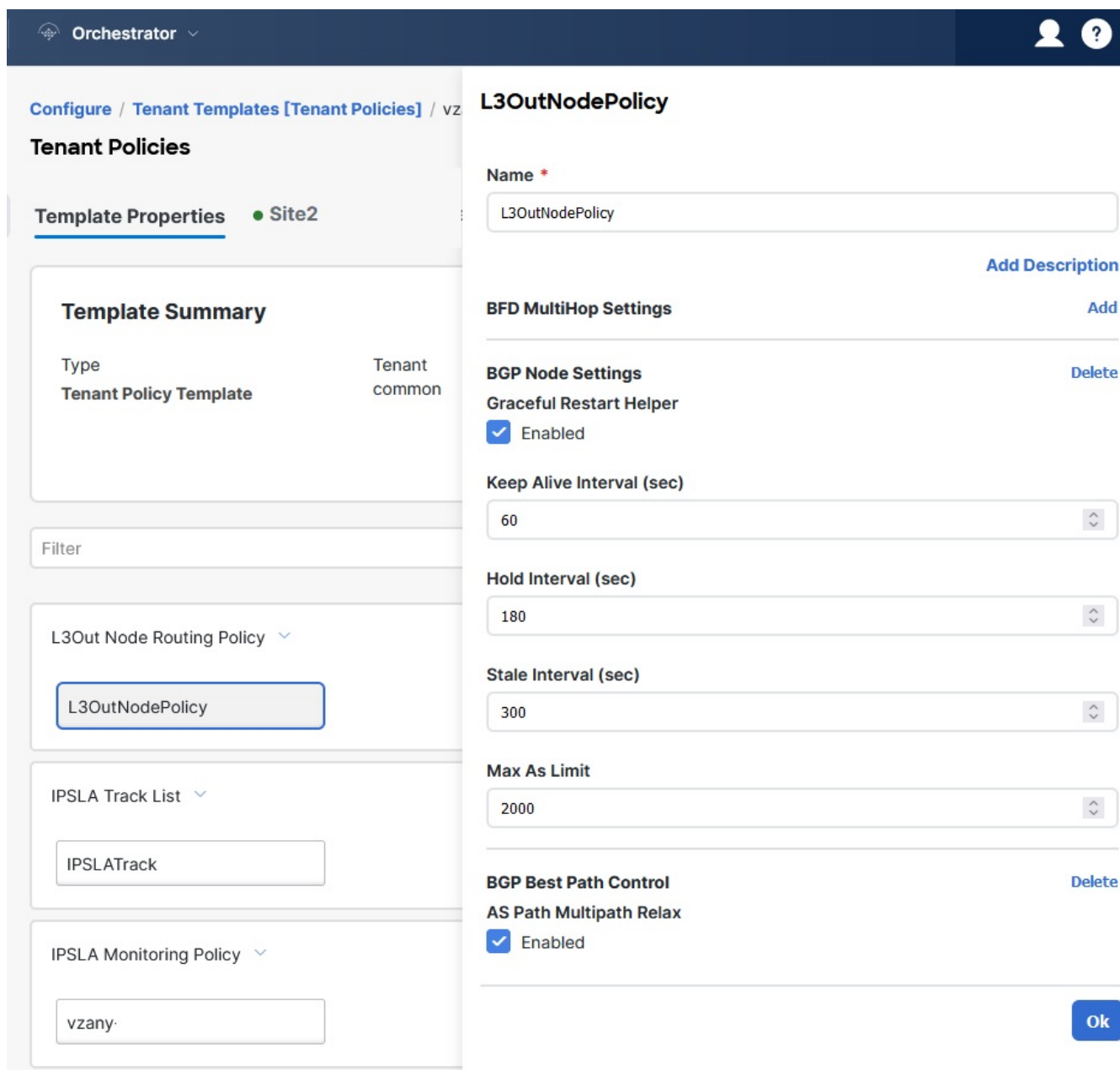


Figure 3. Tenant policies

- The following MOs are grouped into an L3Out Interface Routing policy on NDO:
 - OSPF Interface Policy
 - BFD Policy
 - BFD Multi-Hop Interface Policy

Automatic Import of Dependencies

Tenant Policies templates include objects and policies that have local references within the template. For example, an IPSLA track list can contain a list of track members and each track member must refer to a IPSLA monitoring policy. In such cases, importing existing configuration that contains one or more IPSLA track list policies from a fabric will also automatically import the referenced IPSLA monitoring policy. The import workflow displays additional information about the automatically imported policies when you select an object that has such dependencies:

The screenshot shows the 'Orchestrator' interface for configuring 'Tenant Policies'. At the top, there are navigation links for 'Configure / Tenant Templates [Tenant Policies] / pbr' and buttons for 'Refresh', 'Audit Logs', and 'Save'. The main section is titled 'Tenant Policies' and includes 'Template Properties' for S1 and S2. The 'Template Summary' card provides details: Type is 'Tenant Policy Template', Tenant is 'common', Template Status is 'In Sync', and Associated Sites are 2 'In Sync' and 0 'Out of Sync'. The Last Action is 'Deployment Successful' on Sep 25, 2023 at 01:16 am. Below the summary, there are controls for 'IMPORT', 'CANCEL', and 'Create Object'. A section for 'IPSLA Track List' includes a dropdown, a search box with 'IPSLATrackList', and a 'Create IPSLA Track List' button with a checkmark.

Figure 4. Automatic Import of Dependencies

References to Policies in Tenant "Common"

Some policies that you import from a fabric may contain references to policies in tenant **common**. Importing such policies will automatically create a copy of the tenant **common** policy in the Tenant Policies template where the objects are being imported and as a result of that, in the tenant associated with that Tenant Policies template, for example:

- If you import an IPSLA track list that contains a track member which refers to an IPSLA monitoring policy from the **common** tenant, a copy of the tenant `common`'s IPSLA monitoring policy will be created in the Tenant Policies template and the imported track member will reference this newly added IPSLA monitoring policy.
- If you import an L3Out that contains node configuration with a static route which references an IPSLA track list from tenant **common**, a copy of the tenant `common`'s IPSLA track list will be created in the Tenant Policies template.

Unsupported Scenarios

If an L3Out contains one or more configuration options that are currently not supported by NDO, you will not be able to import that L3Out. The following configurations are currently not supported by NDO and will prevent you from importing any L3Out that includes them:

- GOLF
- EIGRP

In these cases, the import workflow UI will display an orange exclamation point icon with a message explaining the issue and you will not be able to select that L3Out for import:

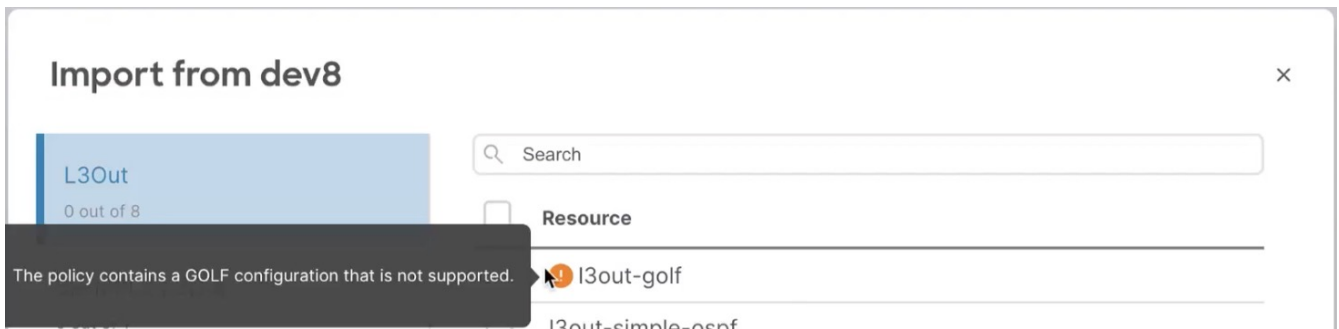


Figure 5. Unsupported Scenarios

Importing Tenant Policies Template Objects

Before you begin:

- If you want to configure and deploy new SR-MPLS L3Out configurations (greenfield deployment), see the earlier sections of this chapter instead.
- You must have the Cisco Nexus Dashboard Orchestrator service that is installed and enabled.
- You must have the fabrics on board to your Cisco Nexus Dashboard and enabled for management in the Orchestrator service.
- Ensure you have read and understood the Templates and Policy Objects dependencies that are described in [Overview of Importing SR-MPLS Configuration](#).

This section describes how to import existing SR-MPLS L3Out configuration policies from Cisco APIC into NDO's Tenant Policies template. For more information about each policy and how it relates to policies and settings in other templates, see [Overview of Importing SR-MPLS Configuration](#).

1. Log in to your Cisco Nexus Dashboard and open the Orchestrator service.
2. In the left navigation pane, choose **Configure > Tenant Template > Tenant Policies**.
3. In the main pane, click **Add Tenant Policy Template**.

If you want to update an existing Tenant Policy template instead, simply click its name. This opens the **Tenant Policies** page.

4. If you created a brand new template, provide the **Name** for the template and **Select a Tenant** from which you plan to import configuration.
5. Associate the template with the fabric from which you plan to import configuration.
 - a. In the **Tenant Policies** template view, choose **Actions > Add/Remove Fabrics**.
 - b. In the **Add Fabrics to <template-name>** dialog, select the fabrics to which you want to deploy the template.
6. Click **Save** to save the template changes.
7. Import one or more policies into the Tenant Policies template.

When you choose to import L3Out configuration from a fabric, the UI shows the list of L3Out policies that can be imported. You may select one or more L3 out policies and import all the provider policies that are used by the L3 out into this Tenant Policy Template.

- a. In the **Tenant Policies** screen's **Template Properties** view, choose **Import<fabric-name>**.

b. In the **Import from <fabric-name>** dialog, choose one or more L3Outs and click **Import**.

If there's an SR-MPLS L3Out already configured in the fabric, its associated policies are available for import in the **L3OutSources** category. When you select an L3OutSource to import, all policies that are referenced by that L3Out in the fabric's APIC are imported into the Tenant Policies template you are editing.

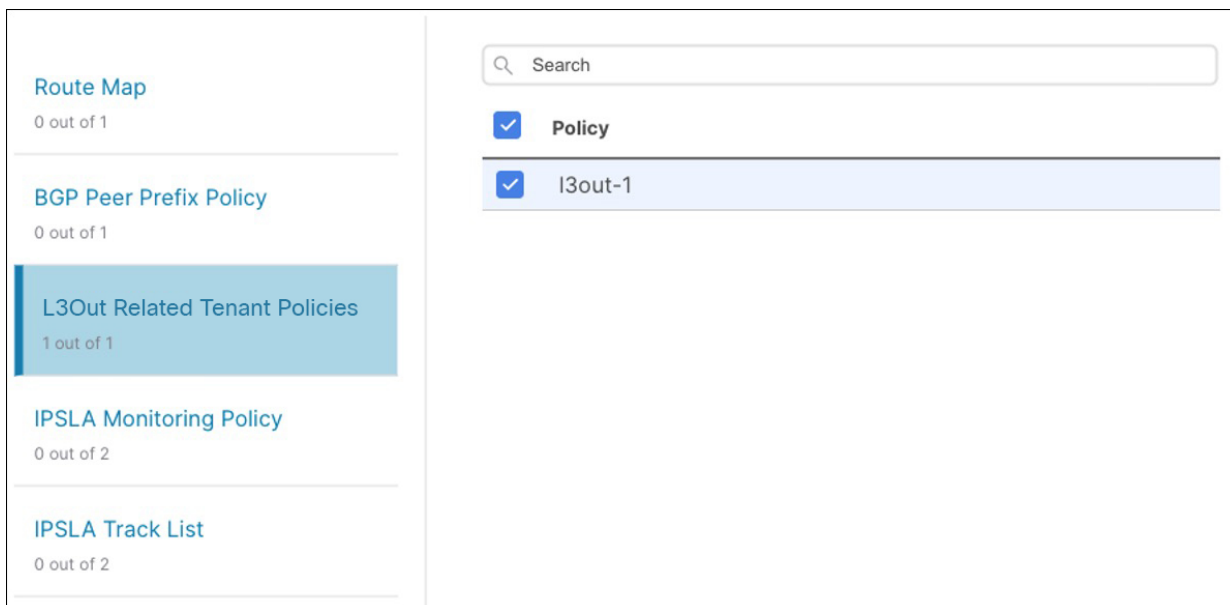


Figure 6. Import Tenant Policies

c. Verify that all imported policies are shown in the template and click **Save** to save it.

All policies configured for the L3Out in the fabric, which you chose to import in the previous step, are added to the Tenant Policies template using the following guidelines:

- Default import route maps are named as *<l3out-name>_di*.
- Default export route maps are named as *<l3out-name>_de*.
- Node routing policies are named as *<l3out-name>_<node-profile-name>*.
- Interface routing policies are named as *<l3out-name>_<interface-profile-name>*.

The screenshot displays the 'Tenant Policies' configuration interface in the Orchestrator. At the top, there's a navigation bar with 'Orchestrator' and a user profile icon. Below it, the breadcrumb path is 'Configure / Tenant Templates [Tenant Policies] / any-pbr'. The main title is 'Tenant Policies' with 'Refresh', 'Audit Logs', and 'Save' buttons. A 'Template Properties' section shows 'S1' and 'S2' tabs. The 'Template Summary' section includes:

- Type: Tenant Policy Template
- Tenant: common
- Template Status: In Sync (with a green checkmark icon)
- Associated Sites: 2 In Sync, 0 Out of Sync (with a green circle containing the number 2)
- Last Action: Deployment Successful (with a green checkmark icon)
- Last Deployed: Sep25, 2023 01:16 am

 Action buttons for 'Edit Template', 'Deploy Template', and 'Actions' are present. Below the summary is a 'Filter' input field and 'IMPORT', 'SELECT', and 'Create Object' buttons. The main content area is divided into four policy sections:

- Route Map Policy for Route Control:** Includes input fields for 'I3out-routemaps_exp_7', 'I3out-routemaps_imp_7', 'I3out-routemaps3_exp_7', and 'I3out-routemaps3jmp_7', with a 'Create Route Map Policy for Route Control' button.
- Custom QoS Policy:** Includes an input field for 'DemoCustomQoS' and a 'Create Custom QoS Policy' button.
- L3Out Node Routing Policy:** Includes input fields for 'L3OutInterfacePolicy1' and 'L3OutInterfacePolicy2', with a 'Create L3Out Node Routing Policy' button.
- L3Out Interface Routing Policy:** Includes an input field for 'I3out-1_routed-eth1-8-v4' and a 'Create L3Out Interface Routing Policy' button.

Figure 7. Tenant Policies

- d. If necessary, update the policy names and click **Save** to save the changes.

We recommend keeping the names of the imported policies as they are created. In this case, when you import L3Outs into the L3Out template as described in the next section, the referenced policies will be automatically recognized and configured for the L3Out by NDO.

However, if you have a specific naming convention in your Multi-Fabric domain, you can update the imported objects' names to follow that convention. In this case, you must manually provide object references during L3Out import in the next section.



For some objects, there is no 1:1 mapping between the managed objects (MOs) created in the fabric and the policy objects as they are seen on and managed by the Orchestrator. For information about which MOs are combined into logical groups in NDO, see [!!!Dita2Adoc_MissingReference:!!!](#).

8. Deploy the template to fabrics.

After you have imported the policies and saved the template, you must deploy it back to the fabric.

- a. In the **Tenant Policies** template view, click **Deploy**.
- b. In the **Deploy to fabrics** dialog, confirm the policies being deployed and click **Deploy**.

What to do next:

After you've defined the policies in the Tenant Policy template, proceed to [Importing SR-MPLS](#)

Importing SR-MPLS Objects

Before you begin:

- If you want to configure and deploy new L3Out configurations (greenfield deployment), see the earlier sections of this chapter instead.
- You must have created a Template Policy template and imported the policies that are associated with the L3Out you want to import, as described in [Importing Tenant Policies Template Objects](#).

This section describes how to import an L3Out template from an APIC fabric into Cisco Nexus Dashboard Orchestrator. For more information about each policy and how it related to policies and settings in other templates, see [Overview of Importing SR-MPLS Configuration](#).

1. In the left navigation pane, choose **Configure > Tenant TemplateL3Out**.
2. In the main pane, click **Create L3Out Template**.

If you want to update an existing L3Out template instead, simply click its name. This opens the **L3Out Template** page.

3. If you are creating a brand new template, choose the **Tenant** and **Fabric** from which you import the L3Out configuration, then click **Save and go to template**.

Each L3Out template is associated with a specific tenant similar to other NDO templates, however it is also assigned to a single fabric only as L3Out configuration is typically fabric-specific.

If you want to import SR-MPLS L3Out configuration for multiple fabrics, you must create at least one L3Out template for each fabric, but you can import multiple SR-MPLS L3Outs per fabric/tenant into the same template or you may choose to have multiple SR-MPLS L3Out templates per fabric as long as they are assigned to different tenants.

4. If you created a brand new template, provide the **Name** for the template and click **Save**.

You must save new templates before you can add new or import existing configuration.

5. Import an SR-MPLS L3Out from the fabric.
 - a. In the main pane, click **Import**.
 - b. In the **Import from <fabric-name>** dialog, select the **SR-MPLS L3Out** you want to import and click **Import**.



Some SR-MPLS L3Outs may be listed with a warning icon. Typically, this means that the associated tenant policies references are not found in NDO Tenant Policies templates and you must first import those references as described in [Importing Tenant Policies Template Objects](#).

If you choose to import an L3Out before importing the policies it references and then redeploy that SR-MPLS L3Out to the fabric, the existing configuration will be removed and the SR-MPLS L3Out will be redeployed from NDO resulting in a loss of any policies that are referenced by the SR-MPLS L3Out that were not imported into NDO.

6. Click **Save** to save the template changes.
7. Deploy the template to fabric.

After you have imported the L3Out and saved the template, you must deploy it back to the fabric.

- a. In the **L3Out Template** page, click **Deploy**.
 - b. In the **Deploy to fabrics** dialog, confirm the policies being deployed and click **Deploy**.
-

First Published: 2024-03-01

Last Modified: 2024-07-26

Americas Headquarters

Cisco Systems, Inc.

170 West Tasman Drive

San Jose, CA 95134-1706

USA

<http://www.cisco.com>

Tel: 408 526-4000

800 553-NETS (6387)

Fax: 408 527-0883