



## Configuring Stateful Switchover

---

The Stateful Switchover (SSO) feature works with Nonstop Forwarding (NSF) in Cisco software to minimize the amount of time a network is unavailable to its users following a switchover. The primary objective of SSO is to improve the availability of networks constructed with Cisco routers. SSO performs the following functions:

- Maintains stateful protocol and application information to retain user session information during a switchover.
  - Enables line cards to continue to forward network traffic with no loss of sessions, providing improved network availability.
  - Provides a faster switchover relative to high system availability.
- 
- [Finding Feature Information, page 1](#)
  - [Prerequisites for Stateful Switchover, page 2](#)
  - [Restrictions for Stateful Switchover, page 2](#)
  - [Information About Stateful Switchover, page 5](#)
  - [How to Configure Stateful Switchover, page 21](#)
  - [Configuration Examples for Stateful Switchover, page 32](#)
  - [Additional References, page 38](#)
  - [Feature Information for Stateful Switchover, page 40](#)

## Finding Feature Information

Your software release may not support all the features documented in this module. For the latest caveats and feature information, see [Bug Search Tool](#) and the release notes for your platform and software release. To find information about the features documented in this module, and to see a list of the releases in which each feature is supported, see the feature information table.

Use Cisco Feature Navigator to find information about platform support and Cisco software image support. To access Cisco Feature Navigator, go to [www.cisco.com/go/cfn](http://www.cisco.com/go/cfn). An account on Cisco.com is not required.

# Prerequisites for Stateful Switchover

## General Prerequisites

- 
- Before copying a file to flash memory, be sure that ample space is available in flash memory. Compare the size of the file you are copying to the amount of available flash memory shown. If the space available is less than the space required by the file you will copy, the copy process will not continue and an error message similar to the following will be displayed:

```
%Error copying tftp://image@server/tftpboot/filelocation/imagename (Not enough space on device).
```

- 
- For Nonstop Forwarding (NSF) support, neighbor routers must be running NSF-enabled images, though SSO need not be configured on the neighbor device.

## Cisco 10000 Series Devices Prerequisites

- On Cisco 10000 series devices only, to boot both Performance Routing Engines (PREs) from the TFTP boot server, you must use the **ip address negotiated** command in interface configuration mode to enable DHCP on the PRE. Otherwise, you will get a duplicate IP address error because of the synchronization of the IP address from the active to the standby Route Processor (RP).

## Cisco 7500 Series Internet Router Platform Prerequisites

- On the Cisco 7507 and Cisco 7513 routers, any combination of RSP8 and RSP16 devices, or any combination of RSP2 and RSP4, are required.

# Restrictions for Stateful Switchover

## General Restrictions for SSO

- Configuration changes made through SNMP may not be automatically configured on the standby RP after a switchover occurs.
- The Hot Standby Routing Protocol (HSRP) is not supported with Cisco Nonstop Forwarding with Stateful Switchover. Do not use HSRP with Cisco Nonstop Forwarding with Stateful Switchover.

- Enhanced Object Tracking (EOT) is not stateful switchover-aware and cannot be used with HSRP, Virtual Router Redundancy Protocol (VRRP), or Gateway Load Balancing Protocol (GLBP) in SSO mode.
- Multicast is not SSO-aware and restarts after switchover; therefore, multicast tables and data structures are cleared upon switchover.

## Configuration Mode Restrictions

- The configuration registers on both RPs must be set the same for the networking device to behave the same when either RP is rebooted.
- During the startup (bulk) synchronization, configuration changes are not allowed. Before making any configuration changes, wait for a message similar to the following:

```
%HA-5-MODE:Operating mode is sso, configured mode is sso.  
We recommend a wait time of 10-15 minutes after receiving the "Bulk Sync succeeded" message before  
performing any configuration on the RSP3 module.  
HA_CONFIG_SYNC-6-BULK_CFGSYNC_SUCCEED: Bulk Sync succeeded  
  
%HA-6-STANDBY_READY: Standby RP in slot n  
is operational in SSO mode
```

## Switchover Process Restrictions

- If the router is configured for SSO mode, and the active RP fails before the standby is ready to switch over, the router will recover through a full system reset.

## ATM Restrictions

- Label-controlled ATM (LC-ATM) functionality does not co-exist with SSO in this release.
- The ATM line protocol does not support stateful switchover capability for the following features in this release:
  - SVCs
  - Switched virtual paths (SVPs)
  - Tagged virtual circuits (TVCs)
  - Point-to-multipoint SVC
  - Integrated Local Management Interface (ILMI)
  - Signaling and Service Specific Connection Oriented Protocol (SSCOP)
  - ATM Connection Manager, permanent virtual circuit (PVC) discovery, ATM applications
  - Backward or version compatibility
  - Statistics and accounting

- Zero ATM cell loss

## Frame Relay and Multilink Frame Relay Restrictions

- The following Frame Relay features are not synchronized between the active and standby RPs in this release: Frame Relay statistics; enhanced LMI (ELMI); Link Access Procedure, Frame Relay (LAPF); SVCs; and subinterface line state.



### Note

---

The subinterface line state is determined by the PVC state, which follows the line card protocol state on DCE interfaces, and is learned from first LMI status exchange after switchover on DTE interfaces.

---

- Frame Relay SSO is supported with the following features:
  - Serial interfaces
  - DTE and DCE LMI (or no keepalives)
  - PVCs (terminated and switched)
  - IP
- When no LMI type is explicitly configured on a DTE interface, the autosensed LMI type is synchronized.
- LMI sequence numbers are not synchronized between the active and standby RPs by default.

LMI keepalive messages contain sequence numbers so that each side (network and peer) of a PVC can detect errors. An incorrect sequence number counts as one error. By default, the switch declares the line protocol and all PVCs down after three consecutive errors. Although it seems that synchronizing LMI sequence numbers might prevent dropped PVCs, the use of resources required to synchronize LMI sequence numbers for potentially thousands of interfaces (channelized) on larger networking devices might be a problem in itself. The networking device can be configured to synchronize LMI sequence numbers. Synchronization of sequence numbers is not necessary for DCE interfaces.

- Changes to the line protocol state are synchronized between the active and standby RPs. The line protocol is assumed to be up on switchover, providing that the interface is up.
- PVC state changes are not synchronized between the active and standby RPs. The PVC is set to the up state on switchover provided that the line protocol state is up. The true state is determined when the first full status message is received from the switch on DTE interfaces.
- Subinterface line state is not synchronized between the active and standby RPs. Subinterface line state is controlled by the PVC state, by configuration settings, or by the hardware interface state when the PVC is up. On switchover, the subinterface state is set to up, providing that the subinterfaces are not shut down and the main interface is up and the line protocol state is up. On DTE devices, the correct state is learned after the first LMI status exchange.
- Dynamic maps are not synchronized between the active and standby RPs. Adjacency changes as a result of dynamic map change are relearned after switchover.
- Dynamically learned PVCs are synchronized between the active and standby RPs and are relearned after the first LMI status exchange.

- For Multilink Frame Relay bundle links, the state of the local bundle link and peer bundle ID is synchronized.
- For a Multilink Frame Relay bundle, the peer ID is synchronized.

## PPP Restrictions

- The following PPP features are not supported: dialer; authentication, authorization, and accounting (AAA), IPPOOL, Layer 2 (L2X), Point-to-Point Tunneling Protocol (PPTP), Microsoft Point-to-point Encryption (MPPE), Link Quality Monitoring (LQM), link or header compression, bridging, asynchronous PPP, and XXCP.

## Cisco ASR 1000 Series Aggregation Services Routers Restrictions

- Only RPR and SSO are supported on Cisco ASR 1000 Aggregation Services routers.
- RPR and SSO can be used on Cisco ASR 1000 Aggregation Services routers to enable a second Cisco software process on a single RP. This configuration option is only available on Cisco ASR 1002 and Cisco ASR 1004 routers. On all other Cisco ASR 1000 Aggregation Services routers, the second Cisco software process can run on the standby RP only.
- A second Cisco software process can only be enabled using RPR or SSO if the RP is using 8 GB of DRAM. The **show version** command output shows the amount of DRAM configured on the router.
- Enabling software redundancy on the Cisco ASR 1001, 1002, and 1004 routers can reduce the Cisco IOS memory by more than half and adversely affect control plane scalability. We recommend that you use hardware redundant platforms, such as the Cisco ASR 1006 or 1013 routers, in networks where both scalability and high availability are critical.
- Cisco ASR 1000 Series Router software redundancy requires an RTU license (FLASR1-IOSRED-RTU(=) on ASR 1002; and FLSASR1-IOSRED(=) on ASR 1001, ASR 1001-X, ASR 1001-HX, ASR 1002-HX, and ASR 1002-X), which allows you to enable software redundancy on the Cisco ASR 1001, ASR 1002, ASR 1001-X, ASR 1001-HX, ASR 1002-HX, ASR 1002-X, and ASR 1004 chassis. Software redundancy requires 4-GB DRAM on the RP1, and minimum 8-GB DRAM on the ASR 1001, ASR 1001-X, ASR 1001-HX, or ASR 1002-X. The Cisco ASR 1001, ASR 1002, and ASR 1002-X come by default with 4-GB DRAM on the built-in route processor, the ASR 1001-X and ASR 1001-HX come by default with 8-GB DRAM, and the ASR 1002-HX comes by default with 16-GB DRAM.

## Information About Stateful Switchover

### SSO Overview

SSO provides protection for network edge devices with dual RPs that represent a single point of failure in the network design, and where an outage might result in loss of service for customers.

In Cisco networking devices that support dual RPs, SSO takes advantage of RP redundancy to increase network availability. The feature establishes one of the RPs as the active processor while the other RP is designated

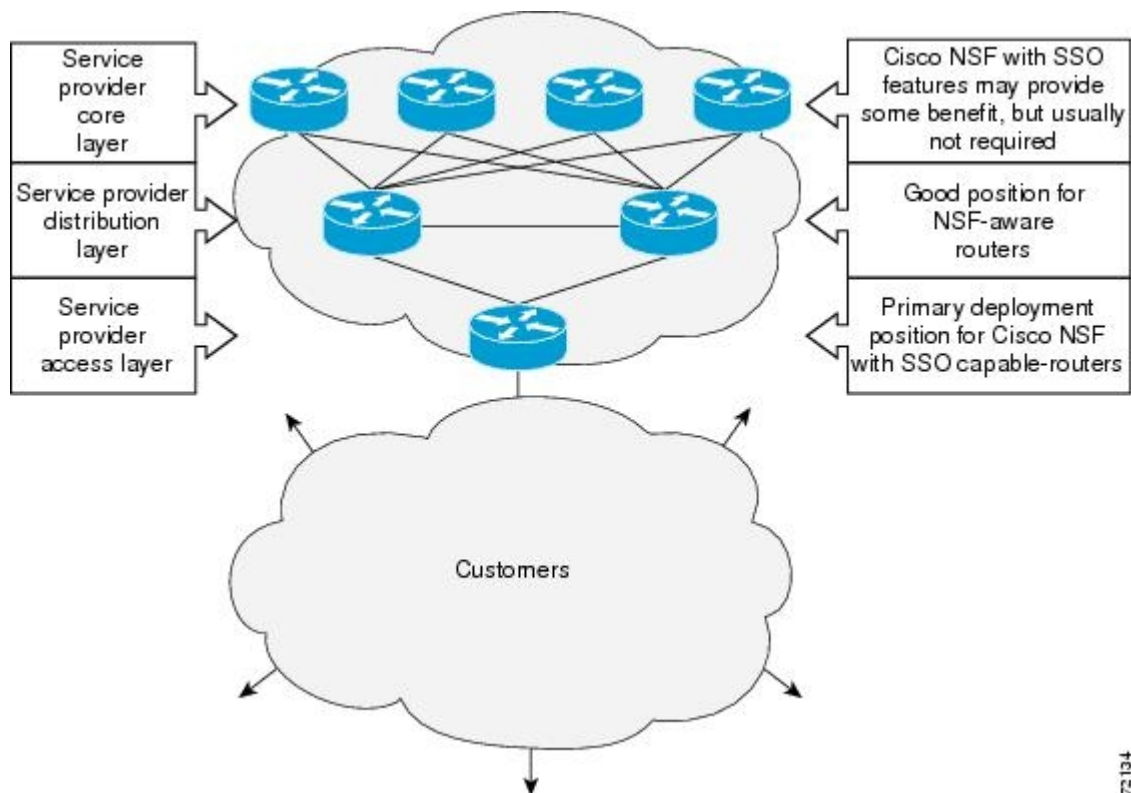
as the standby processor, and then synchronizing critical state information between them. Following an initial synchronization between the two processors, SSO dynamically maintains RP state information between them.

A switchover from the active to the standby processor occurs when the active RP fails, is removed from the networking device, or is manually taken down for maintenance.

SSO is used with the Cisco Nonstop Forwarding (NSF) feature. Cisco NSF allows for the forwarding of data packets to continue along known routes while the routing protocol information is being restored following a switchover. With Cisco NSF, peer networking devices do not experience routing flaps, thereby reducing loss of service outages for customers.

The figure below illustrates how SSO is typically deployed in service provider networks. In this example, Cisco NSF with SSO is primarily at the access layer (edge) of the service provider network. A fault at this point could result in loss of service for enterprise customers requiring access to the service provider network.

**Figure 1: Cisco NSF with SSO Network Deployment: Service Provider Networks**

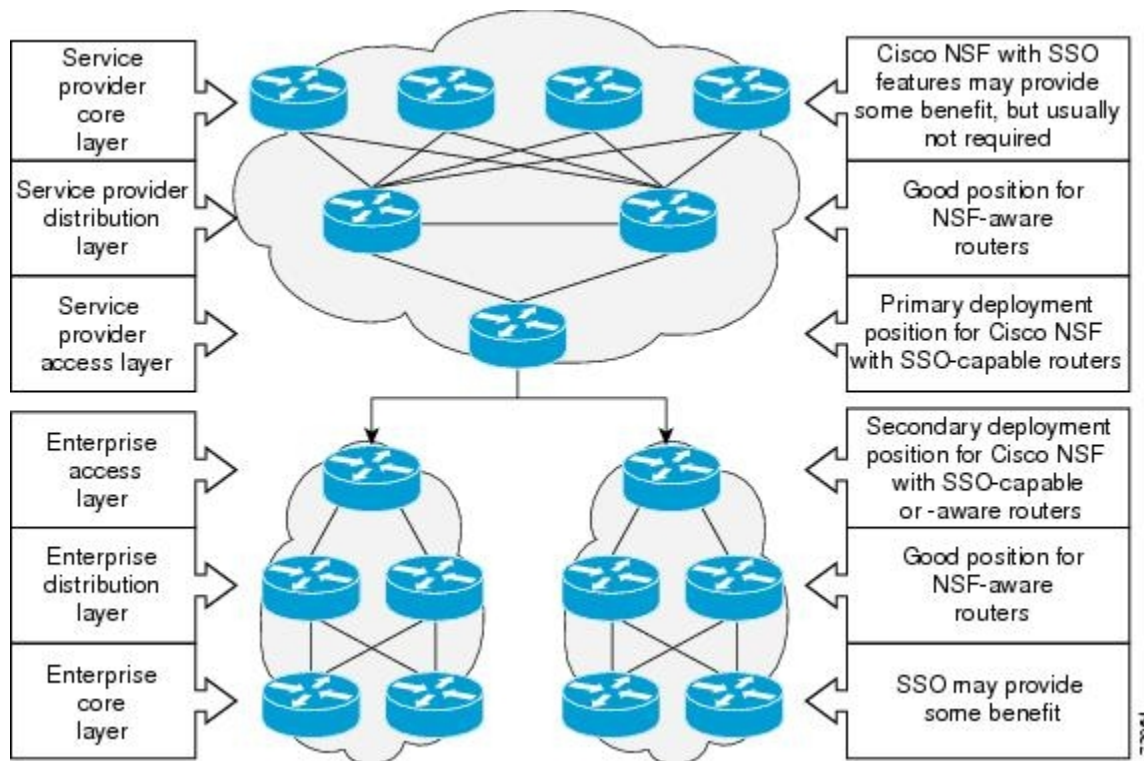


For Cisco NSF protocols that require neighboring devices to participate in Cisco NSF, Cisco NSF-aware software images must be installed on those neighboring distribution layer devices. Additional network availability benefits might be achieved by applying Cisco NSF and SSO features at the core layer of your network; however, consult your network design engineers to evaluate your specific site requirements.

Additional levels of availability may be gained by deploying Cisco NSF with SSO at other points in the network where a single point of failure exists. The figure below illustrates an optional deployment strategy that applies Cisco NSF with SSO at the enterprise network access layer. In this example, each access point in the enterprise network represents another single point of failure in the network design. In the event of a

switchover or a planned software upgrade, enterprise customer sessions would continue uninterrupted through the network.

**Figure 2: Cisco NSF with SSO Network Deployment: Enterprise Networks**



## Redundancy Modes

### High System Availability

HSA mode allows you to install two RPs in a single router to improve system availability. This mode is available only on Cisco 7500 series routers. Supporting two RPs in a router provides the most basic level of increased system availability through a “cold restart” feature. A cold restart means that when one RP fails, the other RP reboots the router. Thus, the router is never in a failed state for very long, thereby increasing system availability.

### Route Processor Redundancy Mode

Router Processor Redundancy (RPR) allows Cisco software to be booted on the standby processor prior to switchover (a cold boot). In RPR, the standby RP loads a Cisco software image at boot time and initializes itself in standby mode; however, although the startup configuration is synchronized to the standby RP, system changes are not. In the event of a fatal error on the active RP, the system switches to the standby processor, which reinitializes itself as the active processor, reads and parses the startup configuration, reloads all of the line cards, and restarts the system.

## Route Processor Redundancy Plus

In RPR+ mode, the standby RP is fully initialized. For RPR+ both the active RP and the standby RP must be running the same software image. The active RP dynamically synchronizes startup and the running configuration changes to the standby RP, meaning that the standby RP need not be reloaded and reinitialized (a hot boot).

Additionally, on the Cisco 10000 and 12000 series Internet routers, the line cards are not reset in RPR+ mode. This functionality provides a much faster switchover between the processors. Information synchronized to the standby RP includes running configuration information, startup information (Cisco 7304, Cisco 7500, Cisco 10000, and Cisco 12000 series networking devices), and changes to the chassis state such as online insertion and removal (OIR) of hardware. Line card, protocol, and application state information is not synchronized to the standby RP.

## Stateful Switchover Mode

### Redundancy Modes by Platform and Software Release



**Note** During normal operation, SSO is the only supported mode for the Cisco 10000 series Internet routers.

The five tables below show redundancy modes by platform and release.

**Table 1: Redundancy Modes by Platform in Cisco IOS Release 12.2S**

Platform	Mode	12.2 (18)S	12.2 (20)S	12.2 (25)S
7304	HSA	No	Yes	Yes
	RPR	No	Yes	Yes
	RPR+	No	Yes	Yes
	SSO	--	Yes	Yes
7500	HSA	Yes	No	Yes
	RPR	Yes	No	Yes
	RPR+	Yes	No	Yes
	SSO	Yes	No	Yes



**Table 2: Redundancy Modes by Platform in Cisco IOS Release 12.2SB**

Platform	Mode	12.2(28)SB	12.2(31)SB2
7304	HSA	No	Yes
	RPR	No	Yes
	RPR+	No	Yes
	SSO	No	Yes
10000	HSA	No	No
	RPR	Yes	Yes
	RPR+	Yes	Yes
	SSO	Yes	Yes

**Table 3: Redundancy Modes by Platform in Cisco IOS Release 12.2SR**

Platform	Mode	12.2 (33) SRA	12.2(33) SRB	12.2(33) SRC
7600	HSA	No	No	No
	RPR	Yes	Yes	Yes
	RPR+	Yes	Yes	Yes
	SSO	Yes	Yes	Yes

**Table 4: Redundancy Modes by Platform in Cisco IOS Release 12.2SX**

Platform	Mode	12.2 (33)SXH
CAT6500	HSA	No
	RPR	Yes
	RPR+	Yes
	SSO	Yes

Table 5: Redundancy Modes by Platform in Cisco IOS Release 12.0S

Redundancy Mode Support in Cisco IOS Releases	
AS	XXXXXX
SS	XXXXXX
RR	XXXXXX
HR	XXXXXX
CS	XXXXXX
SH	NNNN
RR	NNNN
HR	XXXXXX
CS	XXXXXX
SH	NNNN
RR	XXXXXX
HR	XXXXXX
CS	XXXXXX

## Route Processor Synchronization

In networking devices running SSO, both RPs must be running the same configuration so that the standby RP is always ready to assume control if the active RP fails.

To achieve the benefits of SSO, synchronize the configuration information from the active RP to the standby RP at startup and whenever changes to the active RP configuration occur. This synchronization occurs in two separate phases:

- While the standby RP is booting, the configuration information is synchronized in bulk from the active RP to the standby RP.
- When configuration or state changes occur, an incremental synchronization is conducted from the active RP to the standby RP.

### Bulk Synchronization During Initialization

When a system with SSO is initialized, the active RP performs a chassis discovery (discovery of the number and type of line cards and fabric cards, if available, in the system) and parses the startup configuration file.

The active RP then synchronizes this data to the standby RP and instructs the standby RP to complete its initialization. This method ensures that both RPs contain the same configuration information.

Even though the standby RP is fully initialized, it interacts only with the active RP to receive incremental changes to the configuration files as they occur. Executing CLI commands on the standby RP is not supported.

During system startup, the startup configuration file is copied from the active RP to the standby RP. Any existing startup configuration file on the standby RP is overwritten. The startup configuration is a text file stored in the NVRAM of the RP. It is synchronized whenever you perform the following operations:

- The command **copy system:running-config nvram:startup-config** is used.
- The command **copy running-config startup-config** is used.
- The command **write memory** is used.
- The command **copy filename nvram:startup-config** is used.
- SNMP SET of MIB variable ccCopyEntry in CISCO\_CONFIG\_COPY MIB is used.
- System configuration is saved using the **reload** command.
- System configuration is saved following entry of a forced switchover command.

## Incremental Synchronization

After both RPs are fully initialized, any further changes to the running configuration or active RP states are synchronized to the standby RP as they occur. Active RP states are updated as a result of processing protocol information, external events (such as the interface becoming up or down), or user configuration commands (using Cisco IOS commands or Simple Network Management Protocol [SNMP]) or other internal events.

Changes to the running configuration are synchronized from the active RP to the standby RP. In effect, the command is run on both the active and the standby RP.

Configuration changes caused by an SNMP set operation are synchronized on a case-by-case basis. Only two SNMP configuration set operations are supported:

- **shut** and **no-shut** (of an interface)
- **link up/down trap enable/disable**

Routing and forwarding information is synchronized to the standby RP:

- State changes for SSO-aware protocols (ATM, Frame Relay, PPP, High-Level Data Link Control [HDLC]) or applications (SNMP) are synchronized to the standby RP.
- Cisco Express Forwarding (CEF) updates to the Forwarding Information Base (FIB) are synchronized to the standby RP.

Chassis state changes are synchronized to the standby RP. Changes to the chassis state due to line card insertion or removal are synchronized to the standby RP.

Changes to the line card states are synchronized to the standby RP. Line card state information is initially obtained during bulk synchronization of the standby RP. Following bulk synchronization, line card events, such as whether the interface is up or down, received at the active processor are synchronized to the standby RP.

The various counters and statistics maintained in the active RP are not synchronized because they may change often and because the degree of synchronization they require is substantial. The volume of information associated with statistics makes synchronizing them impractical.

Not synchronizing counters and statistics between RPs may create problems for external network management systems that monitor this information.

## Switchover Operation

### Switchover Conditions

An automatic or manual switchover may occur under the following conditions:

- A fault condition that causes the active RP to crash or reboot--automatic switchover
- The active RP is declared dead (not responding)--automatic switchover
- The command is invoked--manual switchover

The user can force the switchover from the active RP to the standby RP by using a CLI command. This manual procedure allows for a graceful or controlled shutdown of the active RP and switchover to the standby RP. This graceful shutdown allows critical cleanup to occur.



#### Note

This procedure should not be confused with the graceful shutdown procedure for routing protocols in core routers--they are separate mechanisms.



#### Caution

The SSO feature introduces a number of new command and command changes, including commands to manually cause a switchover. The **reload** command does not cause a switchover. The **reload** command causes a full reload of the box, removing all table entries, resetting all line cards, and interrupting nonstop forwarding.

### Switchover Time

The time required by the device to switch over from the active RP to the standby RP varies by platform:

- On the Cisco 7500 series devices, switchover time is approximately 30 seconds.
- On the Cisco 7304 and Cisco 10000 series devices, switchover time is only a few seconds.
- On the Cisco 12000 series devices, switchover time due to a manual switchover or due to automatic switchover caused by an error is only a few seconds. If the switchover is caused by a fault on the active RP, the standby RP will detect the problem following the switchover timeout period, which is set to three seconds by default.
- On the Cisco ASR 1000 series routers, switchover time is only a few seconds.

Although the newly active processor takes over almost immediately following a switchover, the time required for the device to begin operating again in full redundancy (SSO) mode can be several minutes, depending on

the platform. The length of time can be due to a number of factors including the time needed for the previously active processor to obtain crash information, load code and microcode, and synchronize configurations between processors and line protocols and Cisco NSF-supported protocols.

The impact of the switchover time on packet forwarding depends on the networking device:

- On the Cisco 7500 series devices, forwarding information is distributed, and packets forwarded from the same line card should have little to no forwarding delay; however, forwarding packets between line cards requires interaction with the RP, meaning that packet forwarding might have to wait for the switchover time. The switchover time on Cisco 7500 series devices is also dependent on the type of RSPs installed on the system.
- On the Cisco 10000 series devices, Cisco Express Forwarding information resides on the RP, so packet forwarding can be impacted momentarily while the switchover occurs.
- On the Cisco 12000 series devices, complete forwarding information is distributed to the line cards, so packet forwarding is not impacted as long as the line cards are working.

## Online Removal of the Active RP

For Cisco 7500 series routers, online removal of the active RSP will automatically switch the redundancy mode to RPR. Online removal of the active RSP causes all line cards to reset and reload, which is equivalent to an RPR switchover, and results in a longer switchover time. When it is necessary to remove the active RP from the system, first issue a switchover command to switch from the active RSP to the standby RSP. When a switchover is forced to the standby RSP before the previously active RSP is removed, the network operation benefits from the continuous forwarding capability of SSO.

For Cisco 7304, Cisco 10000, and Cisco 12000 series Internet routers that are configured to use SSO, online removal of the active RP automatically forces a stateful switchover to the standby RP.

## Fast Software Upgrade

You can use Fast Software Upgrade (FSU) to reduce planned downtime. With FSU, you can configure the system to switch over to a standby RP that is preloaded with an upgraded Cisco software image. FSU reduces outage time during a software upgrade by transferring functions to the standby RP that has the upgraded Cisco software preinstalled. You can also use FSU to downgrade a system to an older version of Cisco software or have a backup system loaded for downgrading to a previous image immediately after an upgrade.

SSO must be configured on the networking device before performing FSU.

**Note**

---

During the upgrade process, different images will be loaded on the RPs for a short period of time. During this time, the device will operate in RPR or RPR+ mode, depending on the networking device.

---

## Core Dump Operation

In networking devices that support SSO, the newly active primary processor runs the core dump operation after the switchover has taken place. Not having to wait for dump operations effectively decreases the switchover time between processors.

Following the switchover, the newly active RP will wait for a period of time for the core dump to complete before attempting to reload the formerly active RP. The time period is configurable. For example, on some platforms an hour or more may be required for the formerly active RP to perform a core dump, and it might not be site policy to wait that much time before resetting and reloading the formerly active RP. In the event that the core dump does not complete within the time period provided, the standby is reset and reloaded regardless of whether it is still performing a core dump.

The core dump process adds the slot number to the core dump file to identify which processor generated the file content.

**Note**

Core dumps are generally useful only to your technical support representative. The core dump file, which is a very large binary file, must be transferred using the TFTP, FTP, or remote copy protocol (rcp) server and subsequently interpreted by a Cisco Technical Assistance Center (TAC) representative that has access to source code and detailed memory maps.

## Virtual Template Manager for SSO

The virtual template manager feature for SSO provides virtual access interfaces for sessions that are not HA-capable and are not synchronized to the standby router. The virtual template manager uses a redundancy facility (RF) client to allow the synchronization of the virtual interfaces in real time as they are created.

The virtual databases have instances of distributed FIB entries on line cards. Line cards require synchronization of content and timing in all interfaces to the standby processor to avoid incorrect forwarding. If the virtual access interface is not created on the standby processor, the interface indexes will be corrupted on the standby router and line cards, which will cause problems with forwarding.

## SSO-Aware Protocols and Applications

SSO-supported line protocols and applications must be SSO-aware. A feature or protocol is SSO-aware if it maintains, either partially or completely, undisturbed operation through an RP switchover. State information for SSO-aware protocols and applications is synchronized from active to standby to achieve stateful switchover for those protocols and applications.

The dynamically created state of SSO-unaware protocols and applications is lost on switchover and must be reinitialized and restarted on switchover.

SSO-aware applications are either platform-independent, such as in the case of line protocols or platform-dependent (such as line card drivers). Enhancements to the routing protocols (Cisco Express Forwarding, Open Shortest Path First, and Border Gateway Protocol [BGP]) have been made in the SSO feature to prevent loss of peer adjacency through a switchover; these enhancements are platform-independent.

### Line Protocols

SSO-aware line protocols synchronize session state information between the active and standby RPs to keep session information current for a particular interface. In the event of a switchover, session information need not be renegotiated with the peer. During a switchover, SSO-aware protocols also check the line card state to learn if it matches the session state information. SSO-aware protocols use the line card interface to exchange messages with network peers in an effort to maintain network connectivity.

## Supported Line protocols by Platform

The five tables below indicate which line protocols are supported on various platforms and releases.

**Table 6: Line Protocol Support in Cisco IOS Release 12.2S**

Protocol	Platform	12.2 (18)S	12.2 (20)S	12.2 (25)S
ATM	Cisco 7304	No	Yes	Yes
	Cisco 7500	Yes	No	Yes
Frame Relay and Multilink Frame Relay	Cisco 7304	No	Yes	Yes
	Cisco 7500	Yes	No	Yes
PPP and Multilink PPP	Cisco 7304	No	Yes	Yes
	Cisco 7500	Yes	No	Yes
HDLC	Cisco 7304	No	Yes	Yes
	Cisco 7500	Yes	No	Yes

**Table 7: Line Protocol Support in Cisco IOS Release 12.2SB**

Protocol	Platform	12.2 (28)SB	12.2(31)SB2
ATM	Cisco 7304	Yes	Yes
	Cisco 10000	Yes	Yes
Frame Relay and Multilink Frame Relay	Cisco 7304	Yes	Yes
	Cisco 10000	Yes	Yes
PPP and Multilink PPP	Cisco 7304	Yes	Yes
	Cisco 10000	Yes	Yes
HDLC	Cisco 7304	Yes	Yes
	Cisco 10000	Yes	Yes

**Table 8: Line Protocol Support in Cisco IOS Release 12.2SR**

Protocol	Platform	12.2(33)SRA	12.2(33)SRB	12.2(33)SRC
ATM	Cisco 7600	Yes	Yes	Yes
Frame Relay and Multilink Frame Relay	Cisco 7600	Yes	Yes	Yes
PPP and Multilink PPP	Cisco 7600	Yes	Yes	Yes
HDLC	Cisco 7600	Yes	Yes	Yes

**Table 9: Line Protocol Support in Cisco IOS Release 12.2SX**

Protocol	Platform	12.2(33)SXH
ATM	Cisco CAT6500	Yes
	Cisco 7600	Yes
Frame Relay and Multilink Frame Relay	Cisco CAT6500	Yes <sup>1</sup>
	Cisco 7600	Yes
PPP and Multilink PPP	Cisco CAT6500	Yes
	Cisco 7600	Yes
HDLC	Cisco CAT6500	Yes
	Cisco 7600	Yes

<sup>1</sup> Frame Relay is supported, but Multilink Frame Relay is not.

**Table 10: Line Protocol Support in Cisco IOS Release 12.0S**

Protocol	Platform	12.0 (22)S	12.0 (23)S	12.0 (24)S	12.0 (26)S	12.0(28)S
ATM	Cisco 7500	Yes	Yes	Yes	Yes	Yes
	Cisco 10000	Yes	Yes	Yes	Yes	Yes
	Cisco 12000	Yes	Yes	Yes	Yes	Yes



Protocol	Platform	12.0 (22)S	12.0 (23)S	12.0 (24)S	12.0 (26)S	12.0(28)S
Frame Relay and Multilink Frame Relay	Cisco 7500	Yes	Yes	Yes	Yes	Yes
	Cisco 10000	Yes	Yes	Yes	Yes	Yes
	Cisco 12000	No	No	No	No	Yes
PPP and Multilink PPP	Cisco 7500	Yes	Yes	Yes	Yes	Yes
	Cisco 10000	Yes	Yes	Yes	Yes	Yes
	Cisco 12000	Yes	Yes	Yes	Yes	Yes
HDLC	Cisco 7500	Yes	Yes	Yes	Yes	Yes
	Cisco 10000	Yes	Yes	Yes	Yes	Yes
	Cisco 12000	Yes	Yes	Yes	Yes	Yes

### ATM Stateful Switchover

With stateful switchover, ATM dynamic state information is synchronized between the active RP and standby RP. Thus when the active RP fails, the standby RP can take over without spending excessive time relearning the dynamic state information, and forwarding devices can continue to forward packets with only a few seconds of interruption (less on some platforms).



#### Note

ATM SSO is not configurable and runs by default on networking devices configured with ATM and Redundancy Mode SSO.

### Permanent Virtual Circuits

For ATM to support forwarding during and after switchover, ATM permanent virtual circuits (PVCs) must remain up not only within the networking device, but also within the ATM network.

In an ATM network, all traffic to or from an ATM interface is prefaced with a virtual path identifier (VPI) and virtual channel identifier (VCI). A VPI-VCI pair is considered a single virtual circuit. Each virtual circuit is a private connection to another node on the ATM network. In ATM SSO, the VPI-VCI pair is associated with a virtual circuit descriptor (VCD). ATM SSO uses VCD information in synchronizing VPI-VCI information to the standby RP.

Each virtual circuit is treated as a point-to-point or point-to-multipoint mechanism to another networking device or host and can support bidirectional traffic. On point-to-point subinterfaces, or when static mappings are configured, Inverse Address Resolution Protocol (ARP) need not run. In cases where dynamic address mapping is used, an Inverse ARP protocol exchange determines the protocol address to VPI-VCI mapping for the PVC. This process occurs as soon as the PVC on a multipoint subinterface makes the transition to active. If that process fails for some reason, the remote networking device may drop the Inverse ARP request

if it has not yet seen the PVC transition to active. Inverse ARP runs every 60 seconds to relearn the dynamic address mapping information for the active RP.

## Frame Relay and Multilink Frame Relay Stateful Switchover

With stateful switchover, Frame Relay and Multilink Frame Relay dynamic state information is synchronized between the active RP and standby RP. Thus when the active RP fails, the standby RP can take over without spending excessive time relearning the dynamic state information, and forwarding devices can continue to forward packets with only a few seconds of interruption (less on some platforms).

### Permanent Virtual Circuits

For Frame Relay and Multilink Frame Relay to support forwarding during and after switchover, Frame Relay PVCs must remain up not only within the networking device, but also within the Frame Relay network.

In many cases the networking devices are connected to a switch, rather than back-to-back to another networking device, and that switch is not running Cisco software. The virtual circuit state is dependent on line state. PVCs are down when the line protocol is down. PVCs are up when the line protocol is up and the PVC status reported by the adjacent switch is active.

On point-to-point subinterfaces, or when static mappings are configured, Inverse ARP need not run. In cases where dynamic address mapping is used, an Inverse ARP protocol exchange determines the protocol address to data-link connection identifier (DLCI) mapping for the PVC. This exchange occurs as soon as the multipoint PVC makes the transition to active. If the exchange fails for some reason, for example, the remote networking device may drop the Inverse ARP request if it has not yet seen the PVC transition to active--any outstanding requests are run off a timer, with a default of 60 seconds.

### Keepalive Messages

A crucial factor in maintaining PVCs is the delivery of Local Management Interface (LMI) protocol messages (keepalives) during switchover. This keepalive mechanism provides an exchange of information between the network server and the switch to verify that data is flowing.

If a number of consecutive LMI keepalives messages are lost or in error, the adjacent Frame Relay device declares the line protocol down and all PVCs on that interface are declared down within the Frame Relay network and reported as such to the remote networking device. The speed with which a switchover occurs is crucial to avoid the loss of keepalive messages.

The line protocol state depends on the Frame Relay keepalive configuration. With keepalives disabled, the line protocol is always up as long as the hardware interface is up. With keepalives enabled, LMI protocol messages are exchanged between the networking device and the adjacent Frame Relay switch. The line protocol is declared up after a number of consecutive successful LMI message exchanges.

The line protocol must be up according to both the networking device and the switch. The default number of exchanges to bring up the line protocol is implementation-dependent: Three is suggested by the standards; four is used on a Cisco Frame Relay switch, taking 40 seconds at the default interval of 10 seconds; and two is used on a Cisco networking device acting as a switch or when connected back-to-back. This default number could be extended if the LMI "autosense" feature is being used while the LMI type expected on the switch is determined. The number of exchanges is configurable, although the switch and router may not have the same owner.

The default number of lost messages or errors needed to bring down the line is three (two on a Cisco router). By default, if a loss of two messages is detected in 15 to 30 seconds, then a sequence number or LMI type error in the first message from the newly active RP takes the line down.

If a line goes down, consecutive successful LMI protocol exchanges (default of four over 40 seconds on a Cisco Frame Relay switch; default of two over 20 seconds on a Cisco device) will bring the line back up again.

### PPP and Multilink PPP Stateful Switchover

With stateful switchover, specific PPP state information is synchronized between the active RP and standby RP. Thus when the active RP fails, the standby RP can take over without spending excessive time renegotiating the setup of a given link. As long as the physical link remains up, forwarding devices can continue to forward packets with only a few seconds of interruption (less on some platforms). Single-link PPP and Multilink PPP (MLP) sessions are maintained during RP switchover for IP connections only.

PPP and MLP support many Layer 3 protocols such as IPX and IP. Only IP links are supported in SSO. Links supporting non IP traffic will momentarily renegotiate and resume forwarding following a switchover. IP links will forward IP traffic without renegotiation.

A key factor in maintaining PPP session integrity during a switchover is the use of keepalive messages. This keepalive mechanism provides an exchange of information between peer interfaces to verify data and link integrity. Depending on the platform and configuration, the time required for switchover to the standby RP might exceed the keepalive timeout period. PPP keepalive messages are started when the physical link is first brought up. By default, keepalive messages are sent at 10-second intervals from one PPP interface to the other PPP peer.

If five consecutive keepalive replies are not received, the PPP link would be taken down on the newly active RP. Caution should be used when changing the keepalive interval duration to any value less than the default setting.

Only in extremely rare circumstances could the RP switchover time exceed the default 50-second keepalive duration. In the unlikely event this time is exceeded, the PPP links would renegotiate with the peers and resume IP traffic forwarding.

**Note**

---

PPP and MLP are not configurable and run by default on networking devices configured with SSO.

---

### HDLC Stateful Switchover

With stateful switchover, High-Level Data Link Control (HDLC) synchronizes the line protocol state information. Additionally, the periodic timer is restarted for interfaces that use keepalive messages to verify link integrity. Link state information is synchronized between the active RP and standby RP. The line protocols that were up before the switchover remain up afterward as long as the physical interface remains up. Line protocols that were down remain down.

A key factor in maintaining HDLC link integrity during a switchover is the use of keepalive messages. This keepalive mechanism provides an exchange of information between peer interfaces to verify data is flowing. HDLC keepalive messages are started when the physical link is first brought up. By default, keepalive messages are sent at 10-second intervals from one HDLC interface to the other.

HDLC waits at least three keepalive intervals without receiving keepalive messages, sequence number errors, or a combination of both before it declares a line protocol down. If the line protocol is down, SSO cannot support continuous forwarding of user session information in the event of a switchover.

**Note**

---

HDLC is not configurable and runs by default on networking devices configured with SSO.

---

## Quality of Service

The modular QoS CLI (MQS)-based QoS feature maintains a database of various objects created by the user, such as those used to specify traffic classes, actions for those classes in traffic policies, and attachments of those policies to different traffic points such as interfaces. With SSO, QoS synchronizes that database between the primary and secondary RP.

## IPv6 Support for Stateful Switchover

IPv6 neighbor discovery supports SSO using Cisco Express Forwarding. When switchover occurs, the Cisco Express Forwarding adjacency state, which is checkpointed, is used to reconstruct the neighbor discovery cache.

## Line Card Drivers

Platform-specific line card device drivers are bundled with the Cisco software image for SSO and are correct for a specific image, meaning they are designed to be SSO-aware.

Line cards used with the SSO feature periodically generate status events that are forwarded to the active RP. Information includes the line up or down status, and the alarm status. This information helps SSO support bulk synchronization after standby RP initialization and support state reconciliation and verification after a switchover.

Line cards used with the SSO feature also have the following requirements:

- Line cards must not reset during switchover.
- Line cards must not be reconfigured.
- Subscriber sessions may not be lost.

**Note**

---

The standby RP communicates only with the active RP, never with the line cards. This function helps to ensure that the active and standby RP always have the same information.

---

## APS

RPR+ and SSO support allow the automatic protection switching (APS) state to be preserved in the event of failover.

## Routing Protocols and Nonstop Forwarding

Cisco nonstop forwarding (NSF) works with SSO to minimize the amount of time a network is unavailable to its users following a switchover. When a networking device restarts, all routing peers of that device usually

detect that the device went down and then came back up. This down-to-up transition results in what is called a “routing flap,” which could spread across multiple routing domains. Routing flaps caused by routing restarts create routing instabilities, which are detrimental to the overall network performance. Cisco NSF helps to suppress routing flaps, thus improving network stability.

Cisco NSF allows for the forwarding of data packets to continue along known routes while the routing protocol information is being restored following a switchover. With Cisco NSF, peer networking devices do not experience routing flaps. Data traffic is forwarded through intelligent line cards while the standby RP assumes control from the failed active RP during a switchover. The ability of line cards to remain up through a switchover and to be kept current with the FIB on the active RP is key to Cisco NSF operation.

A key element of Cisco NSF is packet forwarding. In Cisco networking devices, packet forwarding is provided by Cisco Express Forwarding. Cisco Express Forwarding maintains the FIB, and uses the FIB information that was current at the time of the switchover to continue forwarding packets during a switchover. This feature eliminates downtime during the switchover.

Cisco NSF supports the BGP, IS-IS, and OSPF routing protocols. In general, these routing protocols must be SSO-aware to detect a switchover and recover state information (converge) from peer devices. Each protocol depends on Cisco Express Forwarding to continue forwarding packets during switchover while the routing protocols rebuild the Routing Information Base (RIB) tables.

## Network Management

Network management support for SSO is provided through the synchronization of specific SNMP data between the active and standby RPs. From a network management perspective, this functionality helps to provide an uninterrupted management interface to the network administrator.

**Note**

---

Synchronization of SNMP data between RPs is available only when the networking device is operating in SSO mode.

---

## SSO for Circuit Emulation Services

SSO for circuit emulation services (CES) for TDM pseudowires provides the ability to switch an incoming DS1/T1/E1 on one SPA to another SPA on same SIP or onto a different SIP.

# How to Configure Stateful Switchover

## Copying an Image onto an RP

**Note**

---

To copy a consolidated package or subpackages onto active and standby RPs on the Cisco ASR 1000 Series Router, see the *Cisco ASR 1000 Series Aggregation Services Routers Software Configuration Guide*.

---

**SUMMARY STEPS**

1. **enable**
2. **copy tftp {slot | disk}device-number : filename**
3. **copy tftp {slave | stby-} {slot | disk}device-number : filename**
4. **exit**

**DETAILED STEPS**

	Command or Action	Purpose
<b>Step 1</b>	<b>enable</b>  <b>Example:</b> Router> enable	Enables privileged EXEC mode. <ul style="list-style-type: none"> <li>• Enter your password if prompted.</li> </ul>
<b>Step 2</b>	<b>copy tftp {slot   disk}device-number : filename</b>  <b>Example:</b> Router# copy tftp slot0:image1	Copies a Cisco software image onto the flash device of the active RP.
<b>Step 3</b>	<b>copy tftp {slave   stby-} {slot   disk}device-number : filename</b>  <b>Example:</b> Router# copy tftp stby-slot0:image1	Copies a Cisco software image onto the flash device of the standby RP.
<b>Step 4</b>	<b>exit</b>  <b>Example:</b> Router# exit	Exits to user EXEC mode.

**Setting the Configuration Register and Boot Variable****Note**

Following the reload, each RP is in its default mode: The Cisco 7304 router boots in SSO mode; the Cisco 7500 series router reboots in HSA mode; the Cisco 10000 series Internet router boots in SSO mode, and the Cisco 12000 series Internet router reboots in RPR mode.

## SUMMARY STEPS

1. enable
2. show version
3. configure terminal
4. no boot system { flash [flash-fs:][partition-number:][filename ] | tftpfilename [ip-address ]}
5. boot system { flash [flash-fs:][partition-number:][filename ] | tftpfilename [ip-address ]}
6. config-register value
7. exit
8. copy running-config startup-config
9. reload

## DETAILED STEPS

	Command or Action	Purpose
Step 1	<b>enable</b>  <b>Example:</b> Router> enable	Enables privileged EXEC mode. <ul style="list-style-type: none"> <li>• Enter your password if prompted.</li> </ul>
Step 2	<b>show version</b>  <b>Example:</b> Router# show version	Obtains the current configuration register setting.
Step 3	<b>configure terminal</b>  <b>Example:</b> Router# configure terminal	Enters global configuration mode.
Step 4	<b>no boot system { flash [flash-fs:][partition-number:][filename ]   tftpfilename [ip-address ]}</b>  <b>Example:</b> Router(config)# no boot system flash	(Optional) Clears any existing system flash or TFTP boot image specification.
Step 5	<b>boot system { flash [flash-fs:][partition-number:][filename ]   tftpfilename [ip-address ]}</b>  <b>Example:</b>	Specifies the filename of stored image in flash memory or, for Cisco 10000, on a TFTP server.

	Command or Action	Purpose
	<b>Example:</b> Router(config)# boot system flash	
<b>Step 6</b>	<b>config-register</b> <i>value</i>  <b>Example:</b> Router(config)# config-register 0x2102	Modifies the existing configuration register setting to reflect the way in which you want to load a system image.
<b>Step 7</b>	<b>exit</b>  <b>Example:</b> Router(config)# exit	Exits global configuration mode and returns the router to privileged EXEC mode.
<b>Step 8</b>	<b>copy running-config startup-config</b>  <b>Example:</b> Router# copy running-config startup-config	Saves the configuration changes to the startup configuration file.
<b>Step 9</b>	<b>reload</b>  <b>Example:</b> Router# reload	Reboots both RPs on the device to ensure that changes to the configuration take effect.

## Configuring SSO



### Note

Cisco 7304 routers and Cisco 10000 series Internet routers operate in SSO mode by default after reloading the same version of SSO-aware images on the device. No configuration is necessary.

### Before You Begin

Image to be used by active or standby RP at initialization must be available on the local flash device.



## SUMMARY STEPS

1. **enable**
2. **configure terminal**
3. **hw-module slot *slot-number* image *file-spec***
4. **redundancy**
5. **mode sso**
6. **end**
7. **copy running-config startup-config**

## DETAILED STEPS

	Command or Action	Purpose
<b>Step 1</b>	<b>enable</b>  <b>Example:</b> Router> enable	Enables privileged EXEC mode.  <ul style="list-style-type: none"> <li>• Enter your password if prompted.</li> </ul>
<b>Step 2</b>	<b>configure terminal</b>  <b>Example:</b> Router# configure terminal	Enters global configuration mode.
<b>Step 3</b>	<b>hw-module slot <i>slot-number</i> image <i>file-spec</i></b>  <b>Example:</b> Router(config)# hw-module slot 6 image slot0:rsp-pv-mz	(Optional) For Cisco 7500 series devices only. Specifies the image to be used by an RP at initialization.  <ul style="list-style-type: none"> <li>• Repeat this step for both the active and standby RPs.</li> </ul>
<b>Step 4</b>	<b>redundancy</b>  <b>Example:</b> Router(config)# redundancy	Enters redundancy configuration mode.
<b>Step 5</b>	<b>mode sso</b>  <b>Example:</b> Router(config)# mode sso	Sets the redundancy configuration mode to SSO on both the active and standby RP.  <b>Note</b> After configuring SSO mode, the standby RP will automatically reset.
<b>Step 6</b>	<b>end</b>  <b>Example:</b> Router(config-red)# end	Exits redundancy configuration mode and returns the router to privileged EXEC mode.

	Command or Action	Purpose
<b>Step 7</b>	<b>copy running-config startup-config</b>  <b>Example:</b> Router# copy running-config startup-config	Saves the configuration changes to the startup configuration file.

## Configuring Frame Relay and Multilink Frame Relay Autosynchronization LMI Sequence Numbers

### SUMMARY STEPS

1. enable
2. configure terminal
3. frame-relay redundancy auto-sync lmi-sequence-numbers

### DETAILED STEPS

	Command or Action	Purpose
<b>Step 1</b>	<b>enable</b>  <b>Example:</b> Router> enable	Enables privileged EXEC mode. <ul style="list-style-type: none"> <li>• Enter your password if prompted.</li> </ul>
<b>Step 2</b>	<b>configure terminal</b>  <b>Example:</b> Router# configure terminal	Enters global configuration mode.
<b>Step 3</b>	<b>frame-relay redundancy auto-sync lmi-sequence-numbers</b>  <b>Example:</b> Router(config)# frame-relay redundancy auto-sync lmi-sequence-numbers	Configures automatic synchronization of Frame Relay LMI sequence numbers between the active RP and the standby RP.

## Verifying SSO Configuration

### SUMMARY STEPS

1. `enable`
2. `show redundancy [clients | counters | history | switchover history | states]`
3. `show redundancy states`

### DETAILED STEPS

	Command or Action	Purpose
Step 1	<p><code>enable</code></p> <p><b>Example:</b></p> <pre>Router&gt; enable</pre>	<p>Enables privileged EXEC mode.</p> <ul style="list-style-type: none"> <li>• Enter your password if prompted.</li> </ul>
Step 2	<p><code>show redundancy [clients   counters   history   switchover history   states]</code></p> <p><b>Example:</b></p> <pre>Router# show redundancy</pre>	<p>Displays SSO configuration information.</p>
Step 3	<p><code>show redundancy states</code></p> <p><b>Example:</b></p> <pre>Router# show redundancy states</pre>	<p>Verifies that the device is running in SSO mode.</p>

## Performing a Fast Software Upgrade



**Note** During the upgrade process, different images will be loaded on the RPs for a very short period of time. If a switchover occurs during this time, the device will recover in HSA, RPR or RPR+ mode, depending on the networking device.

## SUMMARY STEPS

1. **enable**
2. **copy tftp {slot | disk} device-number:filename**
3. **copy tftp {slave | stby-} {slot | disk } device-number : filename**
4. **configure terminal**
5. **no hw-module slot slot-number image file-spec**
6. **hw-module slot slot-number image file-spec**
7. **no boot system flash [flash-fs:][partition-number:][filename ]**
8. **boot system flash [flash-fs:][partition-number:][filename ]**
9. **config-register value**
10. **exit**
11. **copy running-config startup-config**
12. **hw-module standby-cpu reset**
13. **reload standby-cpu**
14. **redundancy force-switchover [main-cpu]**

## DETAILED STEPS

	Command or Action	Purpose
<b>Step 1</b>	<b>enable</b>  <b>Example:</b> Router> enable	Enables privileged EXEC mode.  <ul style="list-style-type: none"> <li>• Enter your password if prompted.</li> </ul>
<b>Step 2</b>	<b>copy tftp {slot   disk} device-number:filename</b>  <b>Example:</b> Router# copy tftp slot0:image1	Copies a Cisco software image onto the flash device of the active RP.
<b>Step 3</b>	<b>copy tftp {slave   stby-} {slot   disk } device-number : filename</b>  <b>Example:</b> Router# copy tftp stby-slot0:image1  <b>Example:</b>	Copies a Cisco software image onto the flash device of the standby RP.
<b>Step 4</b>	<b>configure terminal</b>  <b>Example:</b> Router# configure terminal	Enters global configuration mode.

	Command or Action	Purpose
<b>Step 5</b>	<p><b>no hw-module slot <i>slot-number</i> image <i>file-spec</i></b></p> <p><b>Example:</b></p> <pre>Router(config)# no hw-module slot 6 image slot0:rsp-pv-mz</pre>	<p>For Cisco 7500 series routers only. Clears existing configuration entries for the specified image on an RSP. Configuration entries are additive, and the networking device will use the first image found in the configuration file.</p> <ul style="list-style-type: none"> <li>Repeat this step for both the active and standby RSPs.</li> </ul>
<b>Step 6</b>	<p><b>hw-module slot <i>slot-number</i> image <i>file-spec</i></b></p> <p><b>Example:</b></p> <pre>Router(config)# hw-module slot 6 image slot0:imager1</pre>	<p>For Cisco 7500 series routers only. Specifies the image to be used by the RSP at initialization. Configuration entries are additive, and the networking device will use the first image found in the configuration file.</p> <ul style="list-style-type: none"> <li>Repeat this step for both the active and standby RSPs.</li> </ul>
<b>Step 7</b>	<p><b>no boot system flash</b> [<i>flash-fs:</i>][<i>partition-number:</i>][<i>filename</i> ]</p> <p><b>Example:</b></p> <pre>Router(config)# no boot system flash</pre>	<p>Clears the current boot image filename from the configuration file.</p>
<b>Step 8</b>	<p><b>boot system flash</b> [<i>flash-fs:</i>][<i>partition-number:</i>][<i>filename</i> ]</p> <p><b>Example:</b></p> <pre>Router(config)# boot system flash</pre>	<p>Specifies the filename of a boot image stored in flash memory.</p>
<b>Step 9</b>	<p><b>config-register <i>value</i></b></p> <p><b>Example:</b></p> <pre>Router(config)# config-register 0x2102</pre>	<p>Modifies the existing configuration register setting to reflect the way in which you want to load a system image.</p>
<b>Step 10</b>	<p><b>exit</b></p> <p><b>Example:</b></p> <pre>Router(config)# exit</pre>	<p>Exits global configuration mode and returns the router to privileged EXEC mode.</p>
<b>Step 11</b>	<p><b>copy running-config startup-config</b></p> <p><b>Example:</b></p> <pre>Router# copy running-config startup-config</pre>	<p>Saves the configuration changes to your startup configuration in NVRAM so that the router will boot with the configuration you have entered.</p>
<b>Step 12</b>	<p><b>hw-module standby-cpu reset</b></p> <p><b>Example:</b></p> <pre>Router# hw-module standby-cpu reset</pre>	<p>Resets and reloads the standby processor with the specified Cisco software image, and executes the image.</p>

	Command or Action	Purpose
Step 13	<b>reload standby-cpu</b>  <b>Example:</b> Router# reload standby-cpu	(Optional) For Cisco 12000 series Internet routers only. Resets and reloads the standby processor with the specified Cisco software image, and executes the image.
Step 14	<b>redundancy force-switchover [main-cpu]</b>  <b>Example:</b> Router# redundancy force-switchover	Forces a switchover to the standby RP. <ul style="list-style-type: none"> <li>• For Cisco 10000 series Internet routers: The <b>main-cpu</b> keyword is required.</li> </ul>

## Troubleshooting Stateful Switchover

- The standby RP was reset, but there are no messages describing what happened--To display a log of SSO events and clues as to why a switchover or other event occurred, enter the **show redundancy history** command on the newly active RP.
- The show redundancy states command shows an operating mode that is different than what is configured on the networking device--On certain platforms the output of the **show redundancy states** command displays the actual operating redundancy mode running on the device, and not the configured mode as set by the platform. The operating mode of the system can change depending on system events. For example, SSO requires that both RPs on the networking device be running the same software image; if the images are different, the device will not operate in SSO mode, regardless of its configuration.
- Reloading the device disrupts SSO operation--The SSO feature introduces a number of commands, including commands to manually cause a switchover. The reload command is not an SSO command. This command causes a full reload of the box, removing all table entries, resetting all line cards, and thereby interrupting network traffic forwarding. To avoid reloading the box unintentionally, use the **redundancy force-switchover** command.
- During a software upgrade, the networking device appears to be in a mode other than SSO--During the software upgrade process, the show redundancy command indicates that the device is running in a mode other than SSO. This is normal behavior. Until the FSU procedure is complete, each RP will be running a different software version.
- You can enter ROM monitor mode by restarting the router and then pressing the Break key or issuing a **send break** command from a telnet session during the first 60 seconds of startup. The send break function can be useful for experienced users or for users under the direction of a Cisco Technical Assistance Center (TAC) representative to recover from certain system problems or to evaluate the cause of system problems.

## Troubleshooting SSO

### SUMMARY STEPS

1. **enable**
2. **crashdump-timeout** [*mm* | *hh* : *mm*]
3. **debug atm ha-error**
4. **debug atm ha-events**
5. **debug atm ha-state**
6. **debug ppp redundancy** [detailed | event]
7. **debug redundancy** {all | ui | clk | hub}
8. **show diag** [*slot-number* | chassis | subslot *slot / subslot*] [details | summary]
9. **show redundancy** [clients | counters | debug-log | handover | history | switchover history | states | inter-device]
10. **show version**

### DETAILED STEPS

	Command or Action	Purpose
<b>Step 1</b>	<b>enable</b>  <b>Example:</b> Router> enable	Enables privileged EXEC mode.  <ul style="list-style-type: none"> <li>• Enter your password if prompted.</li> </ul>
<b>Step 2</b>	<b>crashdump-timeout</b> [ <i>mm</i>   <i>hh</i> : <i>mm</i> ]  <b>Example:</b> router(config-red)# crashdump-timeout	Set the longest time that the newly active RP will wait before reloading the formerly active RP.
<b>Step 3</b>	<b>debug atm ha-error</b>  <b>Example:</b> Router# debug atm ha-error	Debugs ATM HA errors on the networking device.
<b>Step 4</b>	<b>debug atm ha-events</b>  <b>Example:</b> Router# debug atm ha-events	Debugs ATM HA events on the networking device.
<b>Step 5</b>	<b>debug atm ha-state</b>  <b>Example:</b> Router# debug atm ha-state	Debugs ATM high-availability state information on the networking device.

	Command or Action	Purpose
Step 6	<b>debug ppp redundancy</b> [ <b>detailed</b>   <b>event</b> ]  <b>Example:</b> Router# debug ppp redundancy	Debugs PPP redundancy on the networking device.
Step 7	<b>debug redundancy</b> { <b>all</b>   <b>ui</b>   <b>clk</b>   <b>hub</b> }  <b>Example:</b> Router# debug redundancy all	Debugs redundancy on the networking device.
Step 8	<b>show diag</b> [ <i>slot-number</i>   <b>chassis</b>   <b>subslot</b> <i>slot / subslot</i> ] [ <b>details</b>   <b>summary</b> ]  <b>Example:</b> Router# show diag	Displays hardware information for the router.
Step 9	<b>show redundancy</b> [ <b>clients</b>   <b>counters</b>   <b>debug-log</b>   <b>handover</b>   <b>history</b>   <b>switchover history</b>   <b>states</b>   <b>inter-device</b> ]  <b>Example:</b> Router# show redundancy	Displays the redundancy configuration mode of the RP. Also displays information about the number of switchovers, system uptime, processor uptime, and redundancy state, and reasons for any switchovers.
Step 10	<b>show version</b>  <b>Example:</b> Router# show version	Displays image information for each RP.

## Configuration Examples for Stateful Switchover

### Example Verifying that SSO Is Configured on Various Platforms

In the following several examples, the **show redundancy** command is used to verify that SSO is configured on the device. Sample output is provided for several platforms.

#### Cisco 7304 Router

```
Router# show redundancy

Redundant System Information :
Available system uptime = 2 minutes
```



```

Switchovers system experienced = 0
Standby failures = 0
Last switchover reason = none
Hardware Mode = Duplex
Configured Redundancy Mode = SSO
Operating Redundancy Mode = SSO
Maintenance Mode = Disabled
Communications = Up
Current Processor Information :
Active Location = slot 0
Current Software state = ACTIVE
Uptime in current state = 2 minutes
Image Version = Cisco Internetwork Operating System Software
IOS (tm) 7300 Software (C7300-P-M), Version 12.2(20)S6, RELEASE SOFTWARE (fc4)
Technical Support: http://www.cisco.com/techsupport
Copyright (c) 1986-2004 by cisco Systems, Inc.

```

In the following several examples, the **show redundancy** command is used to verify that SSO is configured on the device. Sample output is provided for several platforms.

### Cisco 7304 Router

```
Router# show redundancy
```

```

Redundant System Information :
Available system uptime = 2 minutes
Switchovers system experienced = 0
Standby failures = 0
Last switchover reason = none
Hardware Mode = Duplex
Configured Redundancy Mode = SSO
Operating Redundancy Mode = SSO
Maintenance Mode = Disabled
Communications = Up
Current Processor Information :
Active Location = slot 0
Current Software state = ACTIVE
Uptime in current state = 2 minutes
Image Version = Cisco Internetwork Operating System Software
IOS (tm) 7300 Software (C7300-P-M), Version 12.2(20)S6, RELEASE SOFTWARE (fc4)
Technical Support: http://www.cisco.com/techsupport
Copyright (c) 1986-2004 by cisco Systems, Inc.
Compiled Fri 29-Oct-04 14:39
BOOT =
CONFIG FILE =
BOOTLDR = bootdisk:c7300-boot-mz.121-13.EX1
Configuration register = 0x0
Peer Processor Information :
Standby Location = slot 2
Current Software state = STANDBY HOT
Uptime in current state = 1 minute
Image Version = Cisco Internetwork Operating System Software
IOS (tm) 7300 Software (C7300-P-M), Version 12.2(20)S6, RELEASE SOFTWARE (fc4)
Technical Support: http://www.cisco.com/techsupport
Copyright (c) 1986-2004 by cisco Systems, Inc.
Compiled Fri 29-Oct-04 14:39
BOOT =
CONFIG FILE =
BOOTLDR = bootdisk:c7300-boot-mz.121-13.EX1
Configuration register = 0x0

```

### Cisco 7500 Series Router

```

Router# show redundancy
Operating mode is sso
redundancy mode sso
hw-module slot 6 image disk0:rsp-pv-mz
hw-module slot 7 image disk0:rsp-pv-mz
Active in slot 6

```

```

Standby in slot 7
The system total uptime since last reboot is 2 weeks, 23 hours 41 minutes.
The system has experienced 4 switchovers.
The system has been active (become master) for 21 hours 1 minute.
Reason for last switchover: User forced.

```

### Cisco 1000 Series Internet Router

```

Router# show redundancy
PRE A (This PRE)      : Active
PRE B                  : Standby
Operating mode        : SSO
Uptime since this PRE switched to active : 13 hours, 51 minutes
Total system uptime from reload      : 15 hours, 8 minutes
Switchovers this system has experienced : 2
Standby failures since this PRE active : 0
The standby PRE has been up for      : 13 hours, 47 minutes
Standby PRE information....
Standby is up.
Standby has 524288K bytes of memory.
Standby BOOT variable = disk0:c10k-p10-mz
Standby CONFIG_FILE variable =
Standby BOOTLDR variable =
Standby Configuration register is 0x2102
Standby version:
Cisco Internetwork Operating System Software
IOS (tm) 10000 Software (C10K-P10-M), Version 12.0(20020221:082811)
 [REL-bowmore.ios-weekly 100]
Copyright (c) 1986-2002 by cisco Systems, Inc.
Compiled Thu 21-Feb-02 03:28
Active version:
Cisco Internetwork Operating System Software
IOS (am) 10000 Software (C10K-P10-M), Version 12.0(20020221:082811)
 [REL-bowmore.ios-weekly 100]
Copyright (c) 1986-2002 by cisco Systems, Inc.
Compiled Thu 21-Feb-02 03:28

```

### Cisco 1200 Series Internet Router

```

Router# show redundancy
Active GRP in slot 4:
Standby GRP in slot 5:
Preferred GRP: none
Operating Redundancy Mode: SSO
Auto synch: startup-config running-config
switchover timer 3 seconds [default]

```

### Cisco ASR 1000 Series Router

```

Router# show redundancy states
    my state = 13 -ACTIVE
    peer state = 4  -STANDBY COLD
        Mode = Duplex
        Unit ID = 48
Redundancy Mode (Operational) = rpr
Redundancy Mode (Configured) = rpr
Redundancy State              = rpr
    Maintenance Mode = Disabled
    Manual Swact = enabled
    Communications = Up
    client count = 66
    client_notification_TMR = 30000 milliseconds
    RF debug mask = 0x0

```

## Example Verifying that SSO Is Operating on the Device

In the following several examples, the **show redundancy** command with the **states** keyword is used to verify that SSO is configured on the device. Sample output is provided for several platforms.

### Cisco 7304 Router

```
Router# show redundancy states

my state = 13 -ACTIVE
peer state = 8 -STANDBY HOT
Mode = Duplex
Unit ID = 0
Redundancy Mode (Operational) = SSO
Redundancy Mode (Configured) = SSO
Split Mode = Disabled
Manual Swact = Enabled
Communications = Up
client count = 18
client_notification_TMR = 30000 milliseconds
RF debug mask = 0x0
```

### Cisco 7500 Series Router

```
Router# show redundancy states

my state = 13 -ACTIVE
peer state = 8 -STANDBY HOT
Mode = Duplex
Unit ID = 7
Redundancy Mode = sso
Maintenance Mode = Disabled
Manual Swact = Enabled
Communications = Up
client count = 12
client_notification_TMR = 30000 milliseconds
RF debug mask = 0x0
```

### Cisco 10000 Series Internet Router

```
Router# show redundancy states

my state = 13 -ACTIVE
peer state = 8 -STANDBY HOT
Mode = Duplex
Unit = Preferred Primary
Unit ID = 0
Redundancy Mode = SSO
Maintenance Mode = Disabled
Manual Swact = Enabled
Communications = Up
client count =14
client_notification_TMR = 30000 milliseconds
RF debug mask = 0x0
```

### Cisco 12000 Series Internet Router

```
Router# show redundancy states

my state = 13 -ACTIVE
peer state = 8 -STANDBY HOT
Mode = Duplex
```

```

Unit ID = 4
Redundancy Mode = SSO
Maintenance Mode = Disabled
Manual Swact = Enabled
Communications = Up
client count = 14
client_notification_TMR = 30000 milliseconds
RF debug mask = 0x

```

### Cisco ASR 1000 Series Router

```

Router# show redundancy states
  my state = 13 -ACTIVE
  peer state = 4 -STANDBY COLD
    Mode = Duplex
    Unit ID = 48
Redundancy Mode (Operational) = rpr
Redundancy Mode (Configured) = rpr
Redundancy State = rpr
  Maintenance Mode = Disabled
Manual Swact = enabled
Communications = Up
  client count = 66
  client_notification_TMR = 30000 milliseconds
  RF debug mask = 0x0

```

## Example Verifying SSO Protocols and Applications

Enter the **show redundancy** command with the **client** keyword to display the list of applications and protocols that have registered as SSO protocols or applications. You can also verify the list of supported line protocols.

### Cisco 7304 Router

```

Router# show redundancy clients

clientID = 0 clientSeq = 0 RF_INTERNAL_MSG
clientID = 29 clientSeq = 60 Redundancy_Mode RF
clientID = 25 clientSeq = 130 CHKPT RF
clientID = 1314 clientSeq = 137 7300 Platform RF
clientID = 22 clientSeq = 140 Network RF Client
clientID = 24 clientSeq = 150 CEF RRP RF Client
clientID = 5 clientSeq = 170 RFS client
clientID = 23 clientSeq = 220 Frame Relay
clientID = 49 clientSeq = 225 HDLC
clientID = 20 clientSeq = 310 IPRROUTING NSF RF cli
clientID = 21 clientSeq = 320 PPP RF
clientID = 34 clientSeq = 350 SNMP RF Client
clientID = 52 clientSeq = 355 ATM
clientID = 35 clientSeq = 360 History RF Client
clientID = 54 clientSeq = 530 SNMP HA RF Client
clientID = 75 clientSeq = 534 VRF common
clientID = 57 clientSeq = 540 ARP
clientID = 65000 clientSeq = 65000 RF_LAST_CLIENT

```

### Cisco 7500 Series Router

```

Router# show redundancy clients

clientID = 0      clientSeq = 0      RF_INTERNAL_MSG
clientID = 25     clientSeq = 130     CHKPT RF
clientID = 22     clientSeq = 140     Network RF Client
clientID = 24     clientSeq = 150     CEF RRP RF Client
clientID = 37     clientSeq = 151     MDFS RRP RF Client
clientID = 23     clientSeq = 220     FRAME_RELAY
clientID = 49     clientSeq = 225     HDLC

```

```

clientID = 20      clientSeq = 310      IPRROUTING NSF RF cli
clientID = 21      clientSeq = 320      PPP RF
clientID = 34      clientSeq = 330      SNMP RF Client
clientID = 29      clientSeq = 340      ATM
clientID = 35      clientSeq = 350      History RF Client
clientID = 50      clientSeq = 530      SNMP HA RF Client
clientID = 65000   clientSeq = 65000   RF_LAST_CLIENT

```

### Cisco 10000 Series Internet Routers

```

Router# show redundancy clients
clientID = 0      clientSeq = 0      RF_INTERNAL_MSG
clientID = 25     clientSeq = 130    CHKPT RF
clientID = 22     clientSeq = 140    Network RF Client
clientID = 24     clientSeq = 150    CEF RRP RF Client
clientID = 26     clientSeq = 160    C10K RF Client
clientID = 5      clientSeq = 170    RFS client
clientID = 23     clientSeq = 220    Frame Relay
clientID = 49     clientSeq = 225    HDLC
clientID = 20     clientSeq = 310    IPRROUTING NSF RF cli
clientID = 21     clientSeq = 320    PPP RF
clientID = 34     clientSeq = 330    SNMP RF Client
clientID = 29     clientSeq = 340    ATM
clientID = 35     clientSeq = 350    History RF Client
clientID = 65000 clientSeq = 65000 RF_LAST_CLIENT

```

### Cisco 12000 Series Internet Router

```

Router# show redundancy clients
clientID = 0      clientSeq = 0      RF_INTERNAL_MSG
clientID = 25     clientSeq = 130    CHKPT RF
clientID = 27     clientSeq = 132    C12K RF COMMON Client
clientID = 30     clientSeq = 135    Redundancy Mode RF
clientID = 22     clientSeq = 140    Network RF Client
clientID = 24     clientSeq = 150    CEF RRP RF Client
clientID = 37     clientSeq = 151    MDFS RRP RF Client
clientID = 5      clientSeq = 170    RFS client
clientID = 23     clientSeq = 220    Frame Relay
clientID = 49     clientSeq = 225    HDLC
clientID = 20     clientSeq = 310    IPRROUTING NSF RF cli
clientID = 21     clientSeq = 320    PPP RF
clientID = 34     clientSeq = 330    SNMP RF Client
clientID = 29     clientSeq = 340    ATM
clientID = 35     clientSeq = 350    History RF Client
clientID = 50     clientSeq = 530    SNMP HA RF Client
clientID = 65000 clientSeq = 65000 RF_LAST_CLIENT

```

### Cisco ASR 1000 Series Router

```

Router# show redundancy clients
clientID = 0      clientSeq = 0      RF_INTERNAL_MSG
clientID = 29     clientSeq = 60     Redundancy Mode RF
clientID = 139    clientSeq = 62     IfIndex
clientID = 25     clientSeq = 69     CHKPT RF
clientID = 1340   clientSeq = 90     ASR1000-RP Platform
clientID = 1501   clientSeq = 91     Cat6k CWAN HA
clientID = 78     clientSeq = 95     TSPTUN HA
clientID = 305    clientSeq = 96     Multicast ISSU Conso
clientID = 304    clientSeq = 97     IP multicast RF Clie
clientID = 22     clientSeq = 98     Network RF Client
clientID = 88     clientSeq = 99     HSRP
clientID = 114    clientSeq = 100    GLBP
clientID = 1341   clientSeq = 102    ASR1000 DPIDX
clientID = 1505   clientSeq = 103    Cat6k SPA TSM
clientID = 1344   clientSeq = 110    ASR1000-RP SBC RF
clientID = 227    clientSeq = 111    SBC RF
clientID = 71     clientSeq = 112    XDR RRP RF Client

```

```

clientID = 24      clientSeq = 113
clientID = 146     clientSeq = 114
clientID = 306     clientSeq = 120
clientID = 1504    clientSeq = 128
clientID = 75      clientSeq = 130
clientID = 401     clientSeq = 131
clientID = 402     clientSeq = 132
clientID = 5        clientSeq = 135
clientID = 68      clientSeq = 149
clientID = 23      clientSeq = 152
clientID = 49      clientSeq = 153
clientID = 72      clientSeq = 154
clientID = 113     clientSeq = 155
clientID = 20      clientSeq = 171
clientID = 100     clientSeq = 173
clientID = 101     clientSeq = 174
clientID = 74      clientSeq = 183
clientID = 34      clientSeq = 185
clientID = 52      clientSeq = 186
clientID = 69      clientSeq = 189
clientID = 118     clientSeq = 190
clientID = 82      clientSeq = 191
clientID = 35      clientSeq = 192
clientID = 90      clientSeq = 204
clientID = 70      clientSeq = 215
clientID = 54      clientSeq = 220
clientID = 73      clientSeq = 221
clientID = 76      clientSeq = 222
clientID = 57      clientSeq = 223
clientID = 50      clientSeq = 230
clientID = 1342    clientSeq = 240
clientID = 1343    clientSeq = 241
clientID = 83      clientSeq = 255
clientID = 84      clientSeq = 257
clientID = 85      clientSeq = 258
clientID = 102     clientSeq = 273
clientID = 94      clientSeq = 280
clientID = 135     clientSeq = 289
clientID = 136     clientSeq = 290
clientID = 130     clientSeq = 291
clientID = 148     clientSeq = 296
clientID = 4000    clientSeq = 303
clientID = 4005    clientSeq = 305
clientID = 93      clientSeq = 309
clientID = 205     clientSeq = 311
clientID = 141     clientSeq = 319
clientID = 4006    clientSeq = 322
clientID = 225     clientSeq = 326
clientID = 65000   clientSeq = 336

```

CEF RRP RF Client  
BFD RF Client  
MFIB RRP RF Client  
Cat6k CWAN Interface  
Tableid HA  
NAT HA  
TPM RF client  
Config Sync RF clien  
Virtual Template RF  
Frame Relay  
HDLC  
LSD HA Proc  
MFI STATIC HA Proc  
IPROUTING NSF RF cli  
DHCCPC  
DHCPD  
MPLS VPN HA Client  
SNMP RF Client  
ATM  
AAA  
L2TP  
CCM RF  
History RF Client  
RSVP HA Services  
FH COMMON RF CLIENT  
SNMP HA RF Client  
LDP HA  
IPRM  
ARP  
FH\_RF\_Event\_Detector  
ASR1000 SpaFlow  
ASR1000 IF Flow  
AC RF Client  
AToM manager  
SSM  
MQC QoS  
Config Verify RF cli  
IKE RF Client  
IPSEC RF Client  
CRYPTO RSA  
DHCPv6 Relay  
RF\_TS CLIENT  
ISSU Test Client  
Network RF 2 Client  
FEC Client  
DATA DESCRIPTOR RF C  
Network Clock  
VRRP  
RF\_LAST\_CLIENT

## Additional References

### Related Documents

Related Topic	Document Title
Cisco IOS commands	<a href="#">Cisco IOS Master Commands List, All Releases</a>
Cisco High Availability commands	<i>Cisco IOS High Availability Command Reference</i>
DHCP proxy client	ISSU and SSO--DHCP High Availability Features module in the <i>Cisco IOS IP Addressing Services Configuration Guide</i>

Related Topic	Document Title
MPLS high availability	MPLS High Availability: Overview module in the <i>Cisco IOS Multiprotocol Label Switching Configuration Guide</i>
NSF/SSO - 802.3ah OAM Support	Using Ethernet Operations, Administration, and Maintenance module in the <i>Cisco IOS Carrier Ethernet Configuration Guide</i>
NSF/SSO - Any Transport over MPLS (AToM)	Any Transport over MPLS and AToM Graceful Restart module in the <i>Cisco IOS Multiprotocol Label Switching Configuration Guide</i>
NSF/SSO - E-LMI Support	Configuring Ethernet Local Management Interface at a Provider Edge module in the <i>Cisco IOS Carrier Ethernet Configuration Guide</i>
SSO - BFD (Admin Down)	Bidirectional Forwarding Detection module in the <i>Cisco IOS IP Routing: BFD Configuration Guide</i>
SSO GLBP	GLBP SSO module in the <i>Cisco IOS IP Application Services Configuration Guide</i>
SSO HSRP	Configuring HSRP module in the <i>Cisco IOS IP Application Services Configuration Guide</i>
SSO and RPR on the Cisco ASR 1000 series routers	<i>Cisco ASR 1000 Series Aggregation Services Routers Software Configuration Guide</i>
SSO VRRP	Configuring VRRP module in the <i>Cisco IOS IP Application Services Configuration Guide</i>
Basic IPv6 configuration	Implementing IPv6 Addressing and Basic Connectivity module in the <i>Cisco IOS IPv6 Configuration Guide</i>
Virtual Private LAN Services	NSF/SSO/ISSU Support for VPLS module in the <i>Cisco IOS Multiprotocol Label Switching Configuration Guide</i>

### Standards

Standard	Title
No new or modified standards are supported by this feature, and support for existing standards has not been modified by this feature.	--

**MIBs**

MIB	MIBs Link
No new or modified MIBs are supported, and support for existing MIBs has not been modified.	To locate and download MIBs for selected platforms, Cisco IOS releases, and feature sets, use Cisco MIB Locator found at the following URL: <a href="http://www.cisco.com/go/mibs">http://www.cisco.com/go/mibs</a>

**RFCs**

RFC	Title
No new or modified RFCs are supported by this feature.	--

**Technical Assistance**

Description	Link
The Cisco Support and Documentation website provides online resources to download documentation, software, and tools. Use these resources to install and configure the software and to troubleshoot and resolve technical issues with Cisco products and technologies. Access to most tools on the Cisco Support and Documentation website requires a Cisco.com user ID and password.	<a href="http://www.cisco.com/cisco/web/support/index.html">http://www.cisco.com/cisco/web/support/index.html</a>

## Feature Information for Stateful Switchover

The following table provides release information about the feature or features described in this module. This table lists only the software release that introduced support for a given feature in a given software release train. Unless noted otherwise, subsequent releases of that software release train also support that feature.

Use Cisco Feature Navigator to find information about platform support and Cisco software image support. To access Cisco Feature Navigator, go to [www.cisco.com/go/cfn](http://www.cisco.com/go/cfn). An account on Cisco.com is not required.



**Table 11: Feature Information for Cisco Stateful Switchover**

Feature Name	Releases	Feature Information
Stateful Switchover (SSO)	12.0(22)S 12.0(23)S 12.0(24)S 12.2(20)S 12.2(18)S 12.2(33)SRA	

Feature Name	Releases	Feature Information
		<p>This feature was introduced:</p> <p>In 12.0(23)S, support was added for 1xGE and 3xGE line cards on the Cisco 12000 series Internet router.</p> <p>In 12.0(24)S, support was added for the following line cards on the Cisco 12000 series Internet router:</p> <ul style="list-style-type: none"> <li>• Engine 1 <ul style="list-style-type: none"> <li>• 2-port OC-12/STM-4c DPT</li> </ul> </li> <li>• Engine 2 <ul style="list-style-type: none"> <li>• 1-port OC-48/STM-16c DPT</li> <li>• 8-port OC-3/STM-1c ATM</li> </ul> </li> <li>• IP Service Engine (ISE) <ul style="list-style-type: none"> <li>• 4-port OC-3c/STM-1c POS/SDH ISE</li> <li>• 8-port OC-3c/STM-1c POS/SDH ISE</li> <li>• 16-port OC-3c/STM-1c POS/SDH ISE</li> <li>• 4-port OC-12c/STM-4c POS/SDH ISE</li> <li>• 1-port OC-48c/STM-16c POS/SDH ISE</li> <li>• 4-port channelized OC-12/STM-4 (DS3/E3, OC-3c/STM-1c) POS/SDH ISE</li> <li>• 1-port channelized OC-48/STM-16 (DS3/E3, OC-3c/STM-1c) POS/SDH ISE</li> </ul> </li> </ul>

Feature Name	Releases	Feature Information
		<p>In 12.0(26)S, support was added for the following line cards on the Cisco 12000 series Internet router:</p> <ul style="list-style-type: none"> <li>• 4-port OC-12c/STM-4c DPT ISE</li> </ul> <p>In 12.2(20)S, support was added for the Cisco 7304 router.</p>
CEM SSO/ISSU	12.2(33)SRC	This feature was introduced.
Dynamic Host Configuration Protocol (DHCP) On Demand Address Pool (ODAP) client/server	12.2(31)SB2	This feature was updated to be SSO-compliant.
NSF/SSO--Virtual Private LAN Services	12.2(33)SX14 15.0(1)S	This feature was introduced.
Route Processor Redundancy Plus (RPR+)	12.2(20)S	This feature was introduced on the Cisco 7304 router.
SSO - Automatic Protection Switching (APS)	12.2(28)SB	This feature was introduced.
SSO - BFD (Admin Down)	12.2(33)SB	This feature was introduced.
SSO - DHCP proxy client	12.2(31)SB2 12.2(33)SRC	<p>This feature was updated to be SSO-compliant.</p> <p>In 12.2(33)SRC, this feature was introduced.</p>
SSO - DHCP relay on unnumbered interface	12.2(31)SB2	This feature was updated to be SSO-compliant.
SSO - DHCP server	12.2(31)SB2	This feature was updated to be SSO-compliant.
SSO - Gateway Load Balancing Protocol (GLBP)	12.2(31)SB2 12.2(33)SXH	This feature was updated to be SSO-compliant.
SSO - HDLC	12.2(28)SB 15.0(1)S	This feature was introduced.
SSO - HSRP	12.2(33)SXH 15.0(1)S Cisco IOS XE 3.1.0SG	This feature was introduced.
SSO - MLPPP	12.2(28)SB	This feature was introduced.

Feature Name	Releases	Feature Information
SSO - Multilink Frame Relay	12.2(25)S 12.2(31)SB2 12.2(33)SRB 15.0(1)S	This feature was introduced.  In 12.2(28)S, support was added for the Cisco 12000 series Internet router.  In 12.2(31)SB2, support was added for the Cisco 10000 series Internet router.  In 12.2(33)SRB, this feature was updated to be SSO compliant.
SSO - Multilink PPP (MLP)	15.0(1)S	This feature is supported.
SSO - PPP	12.2(33)SRB 15.0(1)S	This feature was updated to be SSO-compliant.
SSO - PPPoA	12.2(31)SB2	This feature was updated to be SSO-compliant.
SSO - PPPoE	12.2(31)SB2	This feature was updated to be SSO-compliant.
SSO - PPPoE IPv6	12.2(33)SXE	This feature was introduced.
SSO - Quality of Service (QoS)	12.2(25)S 15.0(1)S	This feature was introduced.
SSO - VRRP	12.2(33)SRC 15.0(1)S	This feature was introduced.
Virtual template manager SSO	12.2(33)SRC	This feature was introduced.