

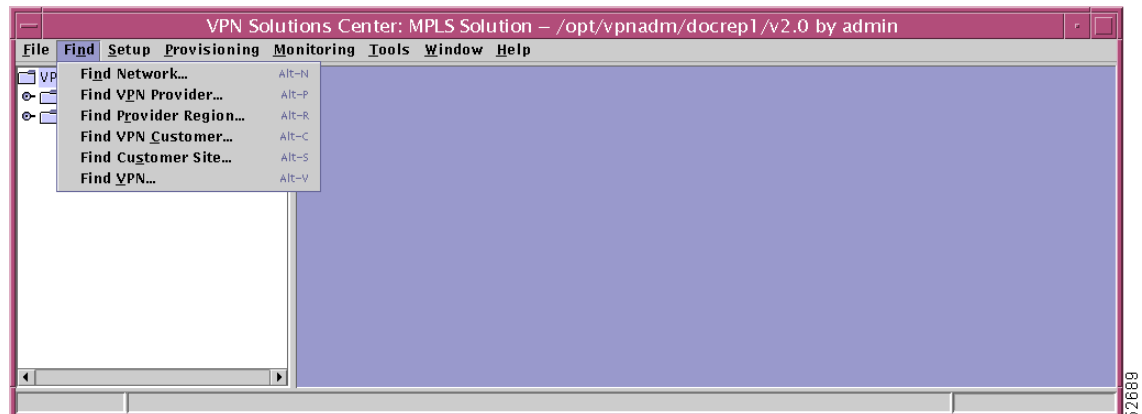


## VPN Console: Find Menu

The **Find** menu item allows you to search for a string of characters corresponding to a node name. When a match is found, the appropriate node is expanded (if not already expanded) and the found item is highlighted.

Figure 5-1, “Find Menu,” provides a view of the **Find** menu. Selections from this menu are used to search for a specific category.

**Figure 5-1 Find Menu**



The **Find** menu includes the following categories:

- Find Network, page 5-2.
- Find VPN Provider, page 5-3.
- Find Provider Region, page 5-4.
- Find VPN Customer, page 5-5.
- Find Customer Site, page 5-6.
- Find VPN, page 5-7.

From each of these categories, you proceed to a **Find** window, as described in the “Find Window” section on page 5-8.

# Find Network

This section explains how to search for a string of characters in the name of a network. Implement the following steps:

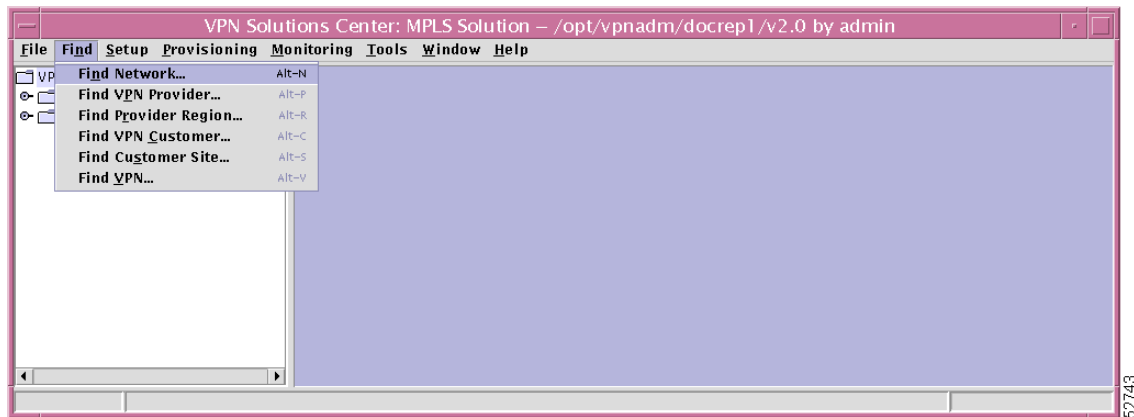
**Step 1** From the VPN console window, choose **Find > Find Network (Alt-N)**, as shown in Figure 5-2.



**Note**

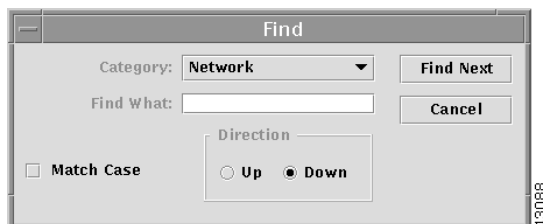
An alternative to selecting **Find > Find Network** is a selection from the hierarchy pane. In the hierarchy pane, right click on **Networks** (expansion of **Device Inventory** then **Targets**), which produces a selection of **Find Network**. Then left click on **Find Network**. Both paths navigate to the same set of windows.

**Figure 5-2 Find Network**



**Step 2** The next window to appear is shown in Figure 5-3, "Find."

**Figure 5-3 Find**



In this window, the default **Category** is **Network**. However, in the drop down menu, you can also choose a category that matches any of the other **Find** choices or **All**, which allows you to search through all of the available categories.

**Step 3** Proceed to the "Find Window" section on page 5-8.

# Find VPN Provider

This section explains how to search for a string of characters in the name of a VPN Service Provider. Implement the following steps:

**Step 1** From the VPN console window, choose **Find > Find VPN Provider (Alt-P)**, as shown in Figure 5-4.



**Note**

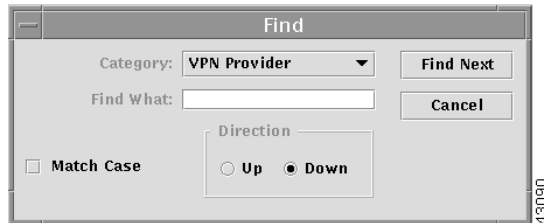
An alternative to selecting **Find > Find VPN Provider** is a selection from the hierarchy pane. In the hierarchy pane, right click on **Provider Administrative Domains** (expansion of **VPN Inventory**), which produces a selection of **Find Provider A.D.** Then left click on **Find Provider A.D.** Both paths navigate to the same set of windows.

**Figure 5-4 Find VPN Provider**



**Step 2** The next window to appear is shown in Figure 5-5, "Find."

**Figure 5-5 Find**



In this window, the default **Category** is **VPN Provider**. However, in the drop down menu, you can also choose a category that matches any of the other **Find** choices or **All**, which allows you to search through all of the available categories.

**Step 3** Proceed to the "Find Window" section on page 5-8.

## Find Provider Region

This section explains how to search for a string of characters in the name of a VPN Service Provider region. Implement the following steps:

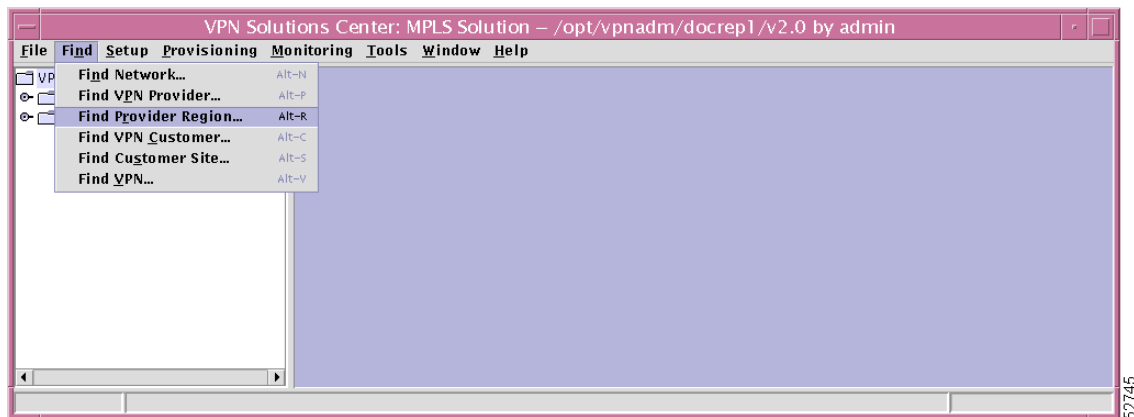
**Step 1** From the VPN console window, choose **Find > Find Provider Region (Alt-R)**, as shown in Figure 5-6.



### Note

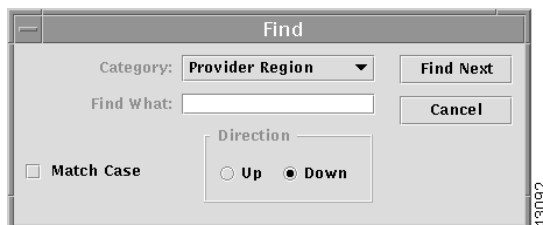
An alternative to selecting **Find > Find Provider Region** is a selection from the hierarchy pane. In the hierarchy pane, right click on a specific Provider Administrative Domain (expansion of **VPN Inventory** then **Provider Administrative Domains**), which produces a selection of **Find Provider Region**. Then left click on **Find Provider Region**. Both paths navigate to the same set of windows.

**Figure 5-6 Find Provider Region**



**Step 2** The next window to appear is shown in Figure 5-7, “Find.”

**Figure 5-7 Find**



In this window, the default **Category** is **Provider Region**. However, in the drop down menu, you can also choose a category that matches any of the other **Find** choices or **All**, which allows you to search through all of the available categories.

**Step 3** Proceed to the “Find Window” section on page 5-8.

## Find VPN Customer

This section explains how to search for a string of characters in the name of a VPN customer. Implement the following steps:

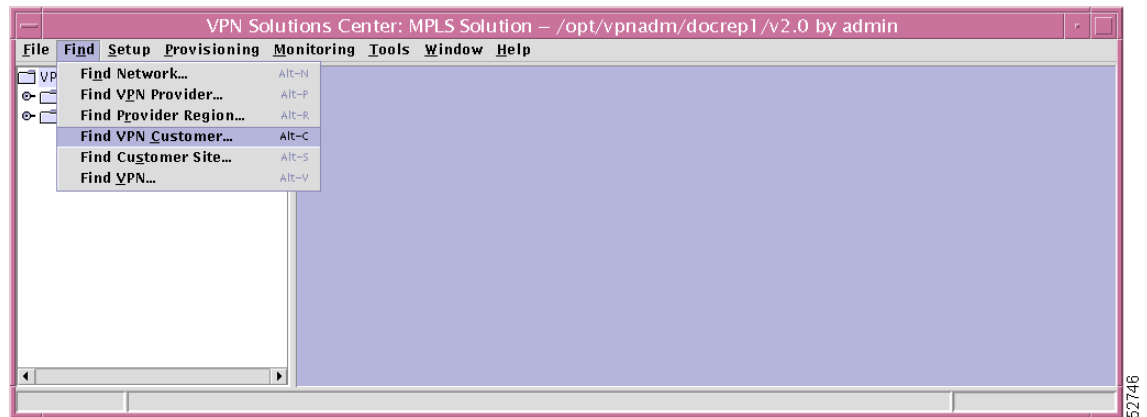
**Step 1** From the VPN console window, choose **Find > Find VPN Customer (Alt-C)**, as shown in Figure 5-8.



**Note**

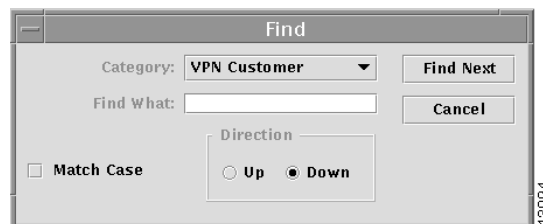
An alternative to selecting **Find > Find VPN Customer** is a selection from the hierarchy pane. In the hierarchy pane, right click on **VPN Customers** (expansion of **VPN Inventory**), which produces a selection of **Find VPN Customer**. Then left click on **Find VPN Customer**. Both paths navigate to the same set of windows.

**Figure 5-8 Find VPN Customer**



**Step 2** The next window to appear is shown in Figure 5-9, “Find.”

**Figure 5-9 Find**



In this window, the default **Category** is **VPN Customer**. However, in the drop down menu, you can also choose a category that matches any of the other **Find** choices or **All**, which allows you to search through all of the available categories.

**Step 3** Proceed to the “Find Window” section on page 5-8.

# Find Customer Site

This section explains how to search for a string of characters in the name of a customer site. Implement the following steps:

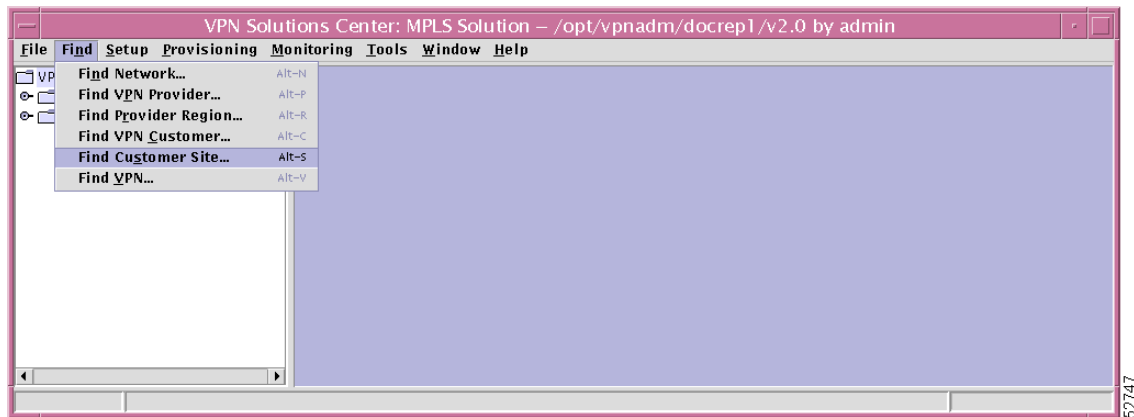
**Step 1** From the VPN console window, choose **Find > Find Customer Site (Alt-S)**, as shown in Figure 5-10.



**Note**

An alternative to selecting **Find > Find Customer Site** is a selection from the hierarchy pane. In the hierarchy pane, right click on a specific VPN customer (expansion of **VPN Inventory** then **VPN Customers**), which produces a selection of **Find Site**. Then left click on **Find Site**. Both paths navigate to the same set of windows.

**Figure 5-10 Find Customer Site**



**Step 2** The next window to appear is shown in Figure 5-11, “Find.”

**Figure 5-11 Find**



In this window, the default **Category** is **Customer Site**. However, in the drop down menu, you can also choose a category that matches any of the other **Find** choices or **All**, which allows you to search through all of the available categories.

**Step 3** Proceed to the “Find Window” section on page 5-8.

## Find VPN

This section explains how to search for a string of characters in the name of a VPN. Implement the following steps:

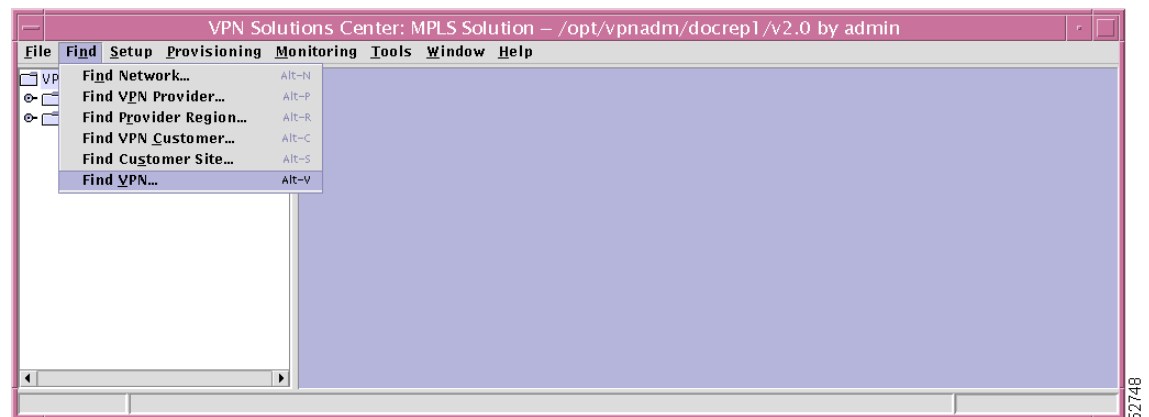
**Step 1** From the VPN console window, choose **Find > Find VPN (Alt-V)**, as shown in Figure 5-12.



**Note**

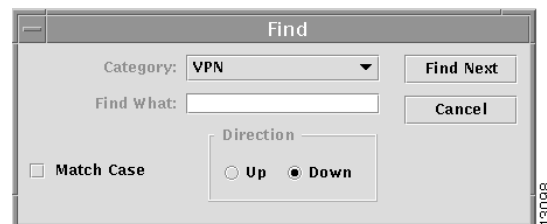
An alternative to selecting **Find > Find VPN** is a selection from the hierarchy pane. In the hierarchy pane, right click on **VPNs** (expansion of **VPN Inventory**), which produces a selection of **Find VPN Definition**. Then left click on **Find VPN Definition**. Both paths navigate to the same set of windows.

**Figure 5-12 Find VPN**



**Step 2** The next window to appear is shown in Figure 5-13, "Find."

**Figure 5-13 Find**



In this window, the default **Category** is **VPN**. However, in the drop down menu, you can also choose a category that matches any of the other **Find** choices or **All**, which allows you to search through all of the available categories.

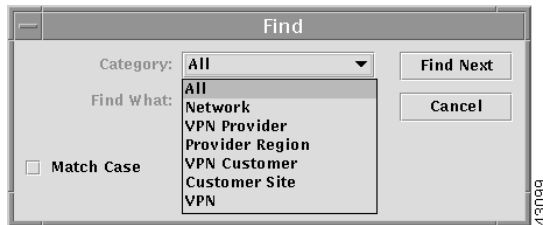
**Step 3** Proceed to the "Find Window" section on page 5-8.

# Find Window

In addition to the **Category** choices described in each of the **Find** menu items, you can proceed in the **Find** window with the following steps:

- Step 1** As explained in each of the **Find** menu items, you can use the **Category** drop down menu to choose a category that matches any of the **Find** choices or **All**, which allows you to search through all of the available categories. An example of this **Find** window with the drop down menu expanded is shown in Figure 5-14, “Find with Category Drop Down Menu Expanded.”

**Figure 5-14 Find with Category Drop Down Menu Expanded**



- Step 2** In the **Find What** field, enter the character sequence for which you want to search. An exact total match is not necessary, just the specified sequence must be exact.
- Step 3** Check the **Match Case** box if you want to match by uppercase or lowercase or leave it unchecked if the case is not to be matched.
- Step 4** In the **Direction** area, choose the direction you want to navigate when searching.

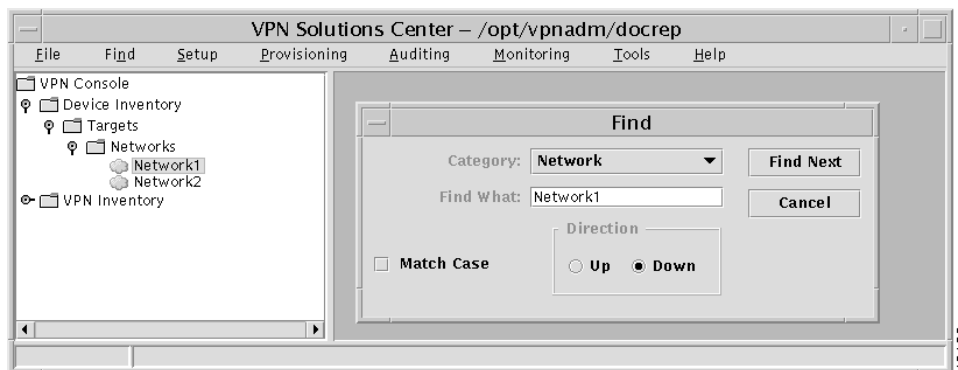


**Note**

The search does not wrap when you reach the top or bottom of the list. When the **Up** direction is chosen, the search ends at the top of the list. When the **Down** direction is chosen, the search ends at the bottom of the list.

- Step 5** Select **Find Next** when you want to proceed with the search. Otherwise, select **Cancel**.
- Step 6** When a match is found, the node structure is expanded and the item is highlighted in the hierarchy pane, as shown in Figure 5-15, “Example of Match Found.”

**Figure 5-15 Example of Match Found**





**Step 7** You can continue to select **Find Next** to continue searching for a match of the specified sequence of characters.

---

