



APPENDIX **B**

Installation Without Cisco TransportPlanner

Installation without Cisco TransportPlanner allows you to provision ONS 15454 automatic node setup (ANS) parameters without the Cisco TransportPlanner NE Update file. Instead, Cisco Transport Controller (CTC) provisions the ANS parameters using the data values that are calculated from the far-end nodes. However, because of the requirements and complexity of the installation-without-Cisco-TransportPlanner sequence, Cisco recommends that you do not use installation without Cisco TransportPlanner unless it is absolutely required.



Note

The installation-without-Cisco-TransportPlanner feature enables you to turn up network nodes without the Cisco TransportPlanner NE Update file. However, you must use Cisco TransportPlanner to create the network design to ensure an implementation using the installation-without-Cisco-TransportPlanner is feasible.



Note

Unless otherwise specified, “ONS 15454” refers to both ANSI and ETSI shelf assemblies.



Caution

This feature requires planning and preparation. Do not begin until you have a full understanding of the requirements and turn-up sequence.

B.1 Overview

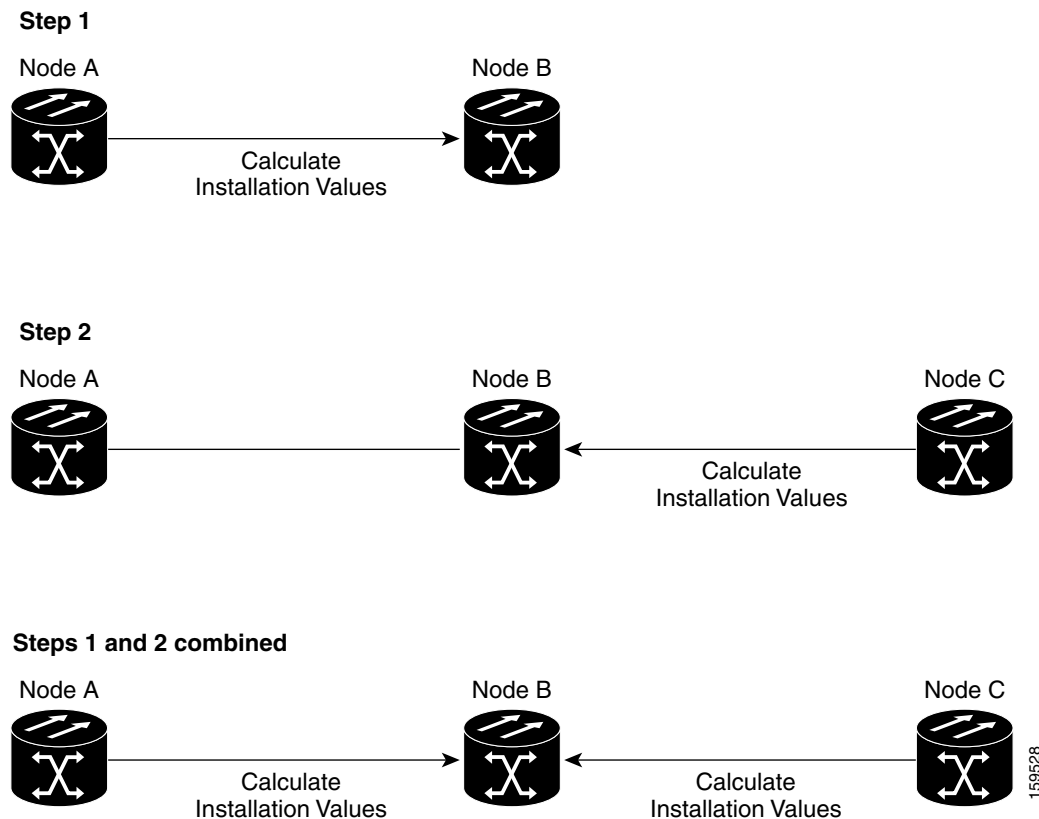
During normal ONS 15454 turn up, a Cisco TransportPlanner NE Update file is imported into each ONS 15454 node and used by CTC to provision the ONS 15454 ANS parameters. (See the [“NTP-G143 Import the Cisco TransportPlanner NE Update Configuration File” procedure on page 3-43.](#)) The NE Update file ensures that all node parameters are set to levels that meet the specific requirements of your network. Installation without Cisco TransportPlanner provides a method for calculating the required installation values without the NE Update file. ANS uses the calculated values to provision the node parameters.

Installation without Cisco TransportPlanner requires physical and optical service channel (OSC) connections to far-end nodes. For example, in [Figure B-1](#), Node B is the node that will be provisioned using installation without Cisco TransportPlanner. If only one far-end node is connected (Node A in this example), installation without Cisco TransportPlanner retrieves values to provision the side that is connected to Node A (Step 1). If Node C is later connected to Node B, installation without Cisco TransportPlanner must be run again to provision the side connected to Node C (Step 2).

Alternatively, installation without Cisco TransportPlanner can be run after both far-end nodes are connected, meaning the installation values are retrieved for both Node A and Node C at one time (Steps 1 and 2 combined).

The same sequence must be repeated at each network node. After Node B is provisioned, you move to Node C. If it is connected to Node B only, installation must be run twice, once for the Node B side. If Node D is connected later, installation without Cisco TransportPlanner must be run again. If Node C is connected to Nodes B and D, installation without Cisco TransportPlanner can be run once to provision Node C.

Figure B-1 Installation Without Cisco TransportPlanner Provisioning



B.2 Installation Without Cisco TransportPlanner Requirements

The following requirements must be met before you can use the installation without Cisco TransportPlanner feature:

- The network design must be prepared using Cisco TransportPlanner. Choose the installation-without-TransportPlanner option during network design. Cisco TransportPlanner will determine whether an installation without Cisco TransportPlanner is possible for your network (that is, whether the ANS parameters can be provisioned without the Cisco TransportPlanner NE Update file). If so, Cisco TransportPlanner designs the network assuming that you will use installation without Cisco TransportPlanner to turn up the network nodes.

- OPT-PRE amplifier cards are required. If you choose the installation-without-TransportPlanner option in the Cisco TransportPlanner design, it will include preamplifier cards (OPT-PRE, OPT-AMP-C, OPT-RAMP-C, or OPT-AMP-17C) cards in all the network nodes.
- Installation without Cisco TransportPlanner is available only for networks that are designed for a flat optical power spectrum (tilt = 0) transmitted over the optical fiber links.
- Cross-connect (XC) termination meshed nodes are not supported.
- Installation without Cisco TransportPlanner is not available over C+L (networks that have both C-band and L-band channels) or 50 Ghz networks.
- Installation without Cisco TransportPlanner is not available on links using data communications network (DCN) extension. OSC connectivity is required.

B.3 Turn Up a Node Using Installation Without Cisco TransportPlanner

The node turn-up sequence using the installation-without-Cisco-TransportPlanner function is similar to the sequence using the Cisco TransportPlanner NE Update file with two key differences:

- You do not perform the “[NTP-G143 Import the Cisco TransportPlanner NE Update Configuration File](#)” procedure on page 3-43. Instead, you use the “[NTP-G169 Calculate ANS Installation Values for Installation Without Cisco TransportPlanner](#)” procedure on page B-5 to calculate the values required to provision the node’s parameters.
- Because all network nodes must be turned up to the same point before the far-end node parameters are retrieved, node turn-up procedures are performed in two phases. Complete Phase 1 at all network nodes before completing Phase 2. Procedures in each phase are listed in the following sections.



Note

For standard node turn-up using Cisco TransportPlanner see [Chapter 3, “Turn Up a Node.”](#)

B.3.1 Node Turn-up Phase 1

This section lists the non-trouble procedures (NTPs) needed to turn up a DWDM node using the installation-without-Cisco-TransportPlanner function. These procedures, and their accompanying tasks, must be completed at every network node before Phase 2 can begin.

1. [NTP-G139 Verify Cisco TransportPlanner Reports and Files, page 3-3](#)—Complete this procedure first.
2. [NTP-G22 Verify Common Card Installation, page 3-5](#)—Complete this procedure next.
3. [NTP-G144 Provision a Multishelf Node, page 3-6](#)—Complete this procedure as needed.
4. [NTP-G23 Create Users and Assign Security, page 3-8](#)—Complete this procedure to create CTC users and assign their security levels.
5. [NTP-G24 Set Up Name, Date, Time, and Contact Information, page 3-10](#)—Continue with this procedure to set the node name, date, time, location, and contact information.
6. [NTP-G25 Set Battery Power Monitor Thresholds, page 3-12](#)—Continue with this procedure to set the node battery power thresholds.

7. [NTP-G26 Set Up CTC Network Access, page 3-13](#)—Continue with this procedure to provision the IP address, default router, subnet mask, and other network configuration settings.
8. [NTP-G27 Set Up the ONS 15454 for Firewall Access, page 3-28](#)—Continue with this procedure if the ONS 15454 will be accessed behind firewalls.
9. [NTP-G132 Provision OSI, page 3-32](#)—Continue with this procedure if the ONS 15454 will be installed in networks with third-party, Open Systems Interconnection (OSI)-based network elements (NEs).
10. [NTP-G29 Set Up SNMP, page 3-41](#)—Complete this procedure if Simple Network Management Protocol (SNMP) will be used for network monitoring.
11. [NTP-G30 Install the DWDM Cards, page 3-55](#)—Complete this procedure to install the DWDM cards, including the OSCM, OSC-CSM, 32WSS, 32WSS-L, 40-WSS-C, 40-WSS-CE, 40-WXC-C, OPT-BST, OPT-BST-E, OPT-BST-L, OPT-AMP-L, OPT-AMP-17-C, OPT-PRE, 32MUX-O, 40-MUX-C, 32DMX-O, 32DMX, 32DMX-L, 40-DMX-C, 40-DMX-CE, 4MD-xx.x, AD-1C-xx.x, AD-2C-xx.x, AD-4C-xx.x, AD-1B-xx.x, AD-4B-xx.x, and MMU.
12. [NTP-G31 Install the DWDM Dispersion Compensating Units, page 3-59](#)—Complete this procedure, as needed, to install a dispersion compensating unit (DCU).
13. [NTP-G179 Install the TXP, MXP, GE_XP, 10GE_XP, GE_XPE, 10GE_XPE, ADM-10G, and OTU2_XP Cards, page 3-60](#)—Complete this procedure, as needed, to install transponder (TXP), muxponder (MXP), GE_XP, 10GE_XP, GE_XPE, 10GE_XPE, and ADM-10G cards.
14. [NTP-G123 Install the Filler Cards, page 3-66](#)—Complete this procedure, as needed, to install ONS 15454 filler cards.
15. [NTP-G34 Install Fiber-Optic Cables on DWDM Cards and DCUs, page 3-67](#)—Complete this procedure, as needed, to install the fiber-optic cables on the DWDM cards.
16. [NTP-G140 Install Fiber-Optic Cables Between Terminal, Hub, or ROADM Nodes, page 3-73](#)—Complete this procedure, as needed, to connect cards in a terminal, hub, or reconfigurable optical add/drop multiplexing (ROADM) node through the patch panel.
17. [NTP-G141 Install Fiber-Optic Cables for Y-Cable Protection Modules, page 3-94](#)—Complete this procedure, as needed, to connect fiber-optic cables to Y-cable modules from client TXP, MXP, GE_XP, 10GE_XP, GE_XPE, 10GE_XPE, and ITU cards.
18. [NTP-G152 Create and Verify Internal Patchcords, page 3-99](#)—Complete this procedure to calculate the DWDM cable connections.
19. [NTP-G38 Provision OSC Terminations, page 3-107](#)—Complete this procedure next.

Complete these procedures at each node in the network before you proceed to Phase 2 procedures.

B.3.2 Node Turn-up Phase 2

Complete these procedures at each network node after the Phase 1 procedures are complete.

1. [NTP-G169 Calculate ANS Installation Values for Installation Without Cisco TransportPlanner, page B-5](#)—Complete this procedure first.
2. [NTP-G37 Run Automatic Node Setup, page 3-109](#)—Complete this procedure next.
3. [NTP-G163 Upgrade Nodes in Single-Shelf Mode to Multishelf Mode, page 3-113](#)—Complete this procedure as needed.

When all nodes are provisioned, continue with [Chapter 4, “Perform Node Acceptance Tests,”](#) and complete all the ONS 15454 provisioning chapters in the sequence provided.

NTP-G169 Calculate ANS Installation Values for Installation Without Cisco TransportPlanner

Purpose	This procedure calculates the installation values needed to provision the ANS parameters when the Cisco TransportPlanner NE Update file is not available.
Tools/Equipment	None
Prerequisite Procedures	All procedures in B.3.1 Node Turn-up Phase 1, page B-3 .
Required/As Needed	Required
Onsite/Remote	Onsite or remote
Security Level	Superuser only


Note

This procedure requires a Cisco TransportPlanner network design prepared with the installation-without-Cisco-TransportPlanner option enabled. This ensures that the ANS parameters can be provisioned using the installation-without-Cisco-TransportPlanner method and that the node is provisioned with the appropriate cards.


Note

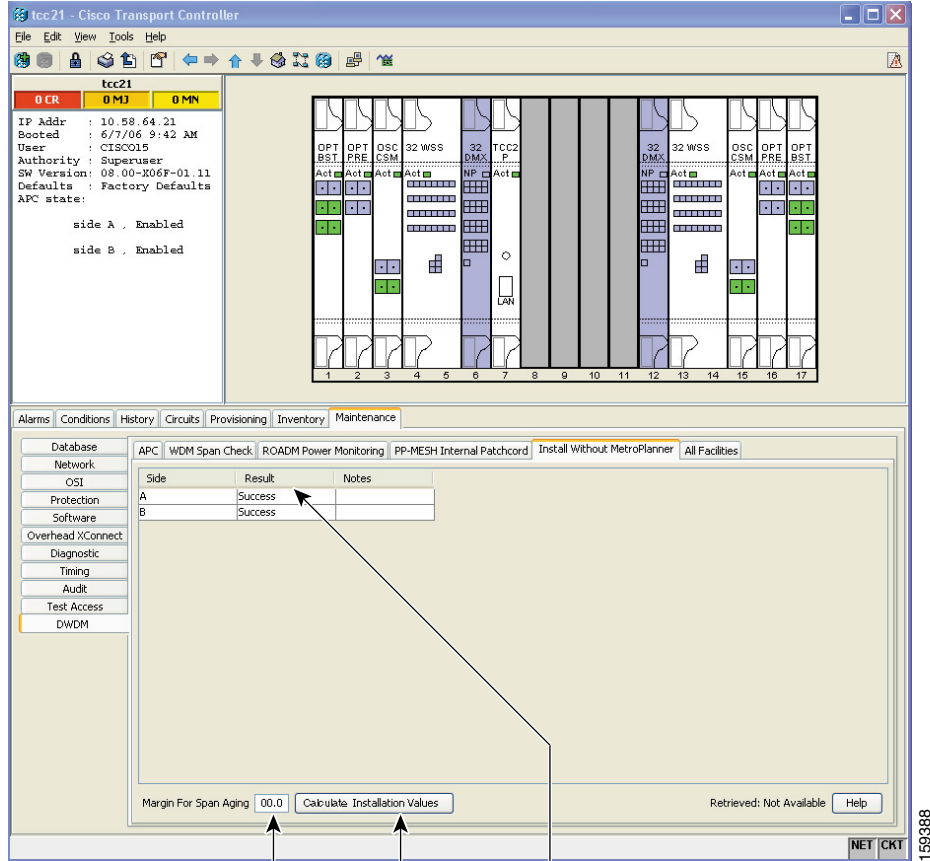
This procedure requires OSC connectivity to one or more adjacent nodes.


Note

This procedure requires OPT-PRE cards to be installed.

- Step 1** Complete the “[DLP-G46 Log into CTC](#)” task on [page 2-26](#) at the node where you want to calculate the installation values for the installation-without-Cisco-TransportPlanner method. If you are already logged in, continue with [Step 2](#).
- Step 2** From the File menu choose **View > Go to Network View**.
- Step 3** Verify that the node has connectivity to one or more adjacent nodes. If it does, continue with [Step 4](#). If the node does not have connectivity to an adjacent node, check the physical cabling and OSC terminations. Complete the following procedures, as needed:
- [NTP-G34 Install Fiber-Optic Cables on DWDM Cards and DCUs, page 3-67](#)
 - [NTP-G140 Install Fiber-Optic Cables Between Terminal, Hub, or ROADM Nodes, page 3-73](#)
 - [NTP-G38 Provision OSC Terminations, page 3-107](#)
- Step 4** Display the node in node view (single shelf mode) or multishelf view (multishelf mode), then click the **Maintenance > DWDM > Automatic Node Turn-UP** tabs ([Figure B-2](#)).

Figure B-2 Install Without TransportPlanner Tab



Margin For
Span Aging field

Retrieve installation
values results

Calculate Installation
Values button

- Step 5** Enter a value (in dB) in the Margin For Span Aging field. This value is subtracted from the near-end transmit power launch value to compensate for span aging.
- Step 6** Click **Calculate Installation Values**. The following information appears for each side:
- Result—Displays the results of the installation value retrieval:
 - Success—The ANS installation values were successfully calculated using values from the far-end node.
 - Fail—None of the ANS installation values were successfully retrieved.
 - Partial Fail—Some of the ANS installation values were successfully retrieved from the far-end node.
 - Near End Receiving Power—The Side n Rx.Power Received ANS parameter value, where $n = A$ through H.
 - Near End Transmitting Power—The Side n Tx.Power Launch ANS parameter value, where $n = A$ through H.

Step 7 If the Results column is Success for all sides, you have completed this procedure. If a Fail or Partial Fail result appears, review the information provided in the Note column:

- No parameter was calculated—Click the **Provisioning > WDM-ANS > Provisioning** tabs to view information about the parameters that could not be calculated.
- Some parameters were not calculated—Click the **Provisioning > WDM-ANS > Provisioning** tabs to view information about the parameters that could not be calculated.
- The FE node was unreachable—Check the connectivity to the adjacent node. Complete the procedures listed in [Step 2](#) to verify both the physical fiber and OSC connectivity to the far-end node.

Stop. You have completed this procedure.
