



## Using ASDM

---

This chapter describes how to use the ASDM user interface, and includes the following sections:

- [Information About the ASDM User Interface, page 4-1](#)
- [Navigating in the ASDM User Interface, page 4-3](#)
- [Menus, page 4-4](#)
- [Toolbar, page 4-10](#)
- [ASDM Assistant, page 4-11](#)
- [Status Bar, page 4-11](#)
- [Device List, page 4-12](#)
- [Common Buttons, page 4-12](#)
- [Keyboard Shortcuts, page 4-13](#)
- [Find Function, page 4-15](#)
- [Enabling Extended Screen Reader Support, page 4-16](#)
- [Organizational Folder, page 4-17](#)
- [About the Help Window, page 4-17](#)
- [Home Pane \(Single Mode and Context\), page 4-17](#)
- [Home Pane \(System\), page 4-31](#)
- [Defining ASDM Preferences, page 4-32](#)
- [Using the ASDM Assistant, page 4-33](#)
- [Enabling History Metrics, page 4-34](#)
- [Unsupported Commands, page 4-34](#)

## Information About the ASDM User Interface

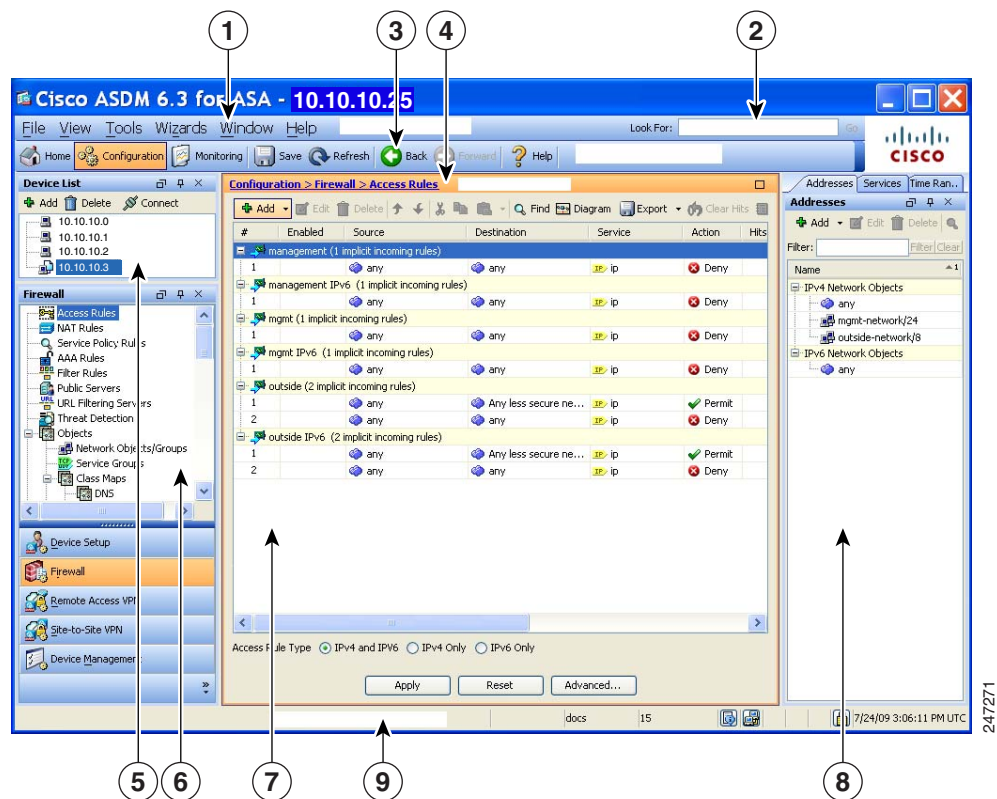
The ASDM user interface is designed to provide easy access to the many features that the ASA supports. The ASDM user interface includes the following elements:

- A menu bar that provides quick access to files, tools, wizards, and help. Many menu items also have keyboard shortcuts.
- A toolbar that enables you to navigate ASDM. From the toolbar you can access the home, configuration, and monitoring panes. You can also get help and navigate between panes.

- A dockable left Navigation pane to move through the Configuration and Monitoring panes. You can click one of the three buttons in the header to maximize or restore this pane, make it a floating pane that you can move, hide it, or close it. To access the Configuration and Monitoring panes, you can do one of the following:
  - Click links on the left side of the application window in the left Navigation pane. The Content pane then displays the path (for example, Configuration > Device Setup > Startup Wizard) in the title bar of the selected pane.
  - If you know the exact path, you can type it directly into the title bar of the Content pane on the right side of the application window, without clicking any links in the left Navigation pane.
- A maximize and restore button in the right corner of the Content pane that lets you hide and show the left Navigation pane.
- A dockable device list pane with a list of devices that you can access through ASDM. You can click one of the three buttons in the header to maximize or restore this pane, make it a floating pane that you can move, hide it, or close it. For more information, see the “Device List” section on page 4-12.
- A status bar that shows the time, connection status, user, memory status, running configuration status, privilege level, and SSL status at the bottom of the application window.
- A left Navigation pane that shows various objects that you can use in the rules tables when you create access rules, NAT rules, AAA rules, filter rules, and service rules. The tab titles within the pane change according to the feature that you are viewing. In addition, the ASDM Assistant appears in this pane.

Figure 4-1 on page 4-2 shows the elements of the ASDM user interface.

Figure 4-1 ASDM User Interface



**Legend**

GUI Element	Description
1	Menu Bar
2	Search Field
3	Toolbar
4	Navigation Path
5	Device List Pane
6	Left Navigation Pane
7	Content Pane
8	Right Navigation Pane
9	Status Bar

**Note**

Tool tips have been added for various parts of the GUI, including Wizards, the Configuration and Monitoring panes, and the Status Bar. To view tool tips, hover your mouse over a specific user interface element, such as an icon in the status bar.

## Navigating in the ASDM User Interface

To move efficiently throughout the ASDM user interface, you may use a combination of menus, the toolbar, dockable panes, and the left and right Navigation panes, which are described in the previous section. The available functions appear in a list of buttons below the Device List pane. An example list could include the following function buttons:

- Device Setup
- Firewall
- Trend Micro Content Security
- Botnet Traffic Filter
- Remote Access VPN
- Site to Site VPN
- Device Management

The list of function buttons that appears is based on the licensed features that you have purchased. Click each button to access the first pane in the selected function for either the Configuration view or the Monitoring view. The function buttons are not available in the Home view.

To change the display of function buttons, perform the following steps:

- 
- Step 1** Choose the drop-down list below the last function button to display a context menu.
- Step 2** Choose one of the following options:
- To show more buttons, click **Show More Buttons**.
  - To show fewer buttons, click **Show Fewer Buttons**.

- To add or remove buttons, click **Add or Remove Buttons**, then click the button to add or remove from the list that appears.
- To change the sequence of the buttons, choose **Option** to display the Option dialog box, which displays a list of the buttons in their current order. Then choose one of the following:
  - To move up a button in the list, click **Move Up**.
  - To move down a button in the list, click **Move Down**.
  - To return the order of the items in the list to the default setting, click **Reset**.

**Step 3** To save your settings and close this dialog box, click **OK**.

## Menus

You can access ASDM menus using the mouse or keyboard. For information about accessing the menu bar from the keyboard, see the [“Keyboard Shortcuts” section on page 4-13](#).

ASDM has the following menus:

- [File Menu, page 4-4](#)
- [View Menu, page 4-5](#)
- [Tools Menu, page 4-6](#)
- [Wizards Menu, page 4-8](#)
- [Window Menu, page 4-9](#)
- [Help Menu](#)

## File Menu

The File menu lets you manage ASA configurations. The following table lists the tasks that you can perform using the File menu.

File Menu Item	Description
Refresh ASDM with the Running Configuration on the Device	Loads a copy of the running configuration into ASDM.
Refresh	Ensures that ASDM has a current copy of the running configuration.
Reset Device to the Factory Default Configuration	Restores the configuration to the factory default. See the <a href="#">“Restoring the Factory Default Configuration” section on page 3-19</a> for more information.
Show Running Configuration in New Window	Displays the current running configuration in a new window.
Save Running Configuration to Flash	Writes a copy of the running configuration to flash memory.

File Menu Item	Description
Save Running Configuration to TFTP Server	Stores a copy of the current running configuration file on a TFTP server. See the <a href="#">“Saving the Running Configuration to a TFTP Server”</a> section on page 46-28 for more information.
Save Running Configuration to Standby Unit	Sends a copy of the running configuration file on the primary unit to the running configuration of a failover standby unit.
Save Internal Log Buffer to Flash	Saves the internal log buffer to flash memory.
Print	Prints the current page. We recommend landscape page orientation when you print rules. When you use Internet Explorer, permission to print was already granted when you originally accepted the signed applet.
Clear ASDM Cache	Removes local ASDM images. ASDM downloads images locally when you connect to ASDM.
Clear ASDM Password Cache	Removes the password cache if you have defined a new password and still have a existing password that is different than the new password.
Clear Internal Log Buffer	Empties the syslog message buffer.
Exit	Closes ASDM.

## View Menu

The View menu lets you display various parts of the ASDM user interface. Certain items are dependent on the current view. You cannot select items that cannot be displayed in the current view. The following table lists the tasks that you can perform using the View menu.

View Menu Item	Description
Home	Displays the Home view.
Configuration	Displays the Configuration view.
Monitoring	Displays the Monitoring view.
Device List	Display a list of devices in a dockable pane. See the <a href="#">“Device List”</a> section on page 4-12 for more information.
Navigation	Shows and hides the display of the Navigation pane in the Configuration and Monitoring views.
ASDM Assistant	Searches and finds useful ASDM procedural help about certain tasks. See the <a href="#">“ASDM Assistant”</a> section on page 4-11 for more information.
SIP Details	Shows and hides voice network information.
Latest ASDM Syslog Messages	Shows and hides the display of the Latest ASDM Syslog Messages pane in the Home view. This pane is only available in the Home view. If you do not have sufficient memory to upgrade to the most current release, syslog message %ASA-1-211004 is generated, indicating what the installed memory is and what the required memory is. This message reappears every 24 hours until the memory is upgraded.

View Menu Item	Description
Addresses	Shows and hides the display of the Addresses pane. The Addresses pane is only available for the Access Rules, NAT Rules, Service Policy Rules, AAA Rules, and Filter Rules panes in the Configuration view.
Services	Shows and hides the display of the Services pane. The Services pane is only available for the Access Rules, NAT Rules, Service Policy Rules, AAA Rules, and Filter Rules panes in the Configuration view.
Time Ranges	Shows and hides the display of the Time Ranges pane. The Time Ranges pane is only available for the Access Rules, Service Policy Rules, AAA Rules, and Filter Rules panes in the Configuration view.
Global Pools	Shows and hides the display of the Global Pools pane. The Global Pools pane is only available for the NAT Rules pane in the Configuration view.
Find in ASDM	Locates an item for which you are searching, such as a feature or the ASDM Assistant.
Back	Returns to the previous pane. See the <a href="#">“Common Buttons” section on page 4-12</a> for more information.
Forward	Goes to the next pane previously visited. See the <a href="#">“Common Buttons” section on page 4-12</a> for more information.
Reset Layout	Returns the layout to the default configuration.
Office Look and Feel	Changes the screen fonts and colors to the Microsoft Office settings.

## Tools Menu

The Tools menu provides you with the following series of tools to use in ASDM.

Tools Menu Item	Description
Command Line Interface	Sends commands to the ASA and view the results. See the <a href="#">“Using the Command Line Interface Tool in ASDM” section on page 3-26</a> for more information.
Show Commands Ignored by ASDM on Device	Displays unsupported commands that have been ignored by ASDM. See the <a href="#">“Showing Commands Ignored by ASDM on the Device” section on page 3-27</a> for more information.
Packet Tracer	Traces a packet from a specified source address and interface to a destination. You can specify the protocol and port of any type of data and view the lifespan of a packet, with detailed information about actions taken on it. See the Tracing Packets with Packet Tracer section in the firewall configuration guide for more information.

Tools Menu Item	Description
Ping	Verifies the configuration and operation of the ASA and surrounding communications links, as well as performs basic testing of other network devices. See the Disabling the Test Configuration section in the firewall configuration guide for more information.
Traceroute	Determines the route that packets will take to their destination. See the Determining Packet Routing with Traceroute section in the firewall configuration guide for more information.
File Management	Views, moves, copies, and deletes files stored in flash memory. You can also create a directory in flash memory. See the <a href="#">“Managing Files” section on page 46-12</a> for more information. You can also transfer files between various file systems, including TFTP, flash memory, and your local PC. See the <a href="#">“Transferring Files” section on page 46-18</a> for more information.
Upgrade Software from Local Computer	Uploads an ASA image, ASDM image, or another image on your PC to flash memory. See the <a href="#">“Managing Files” section on page 46-12</a> dialog box for more information.
Check for ASA/ASDM Updates	Upgrades ASA software and ASDM software through a wizard. See the <a href="#">“The Upgrade Software from Cisco.com Wizard lets you automatically upgrade the ASDM and ASA to more current versions.” section on page 46-5</a> for more information.
Backup Configurations	Backs up the ASA configuration, a Cisco Secure Desktop image, and SSL VPN Client images and profiles. See the <a href="#">“Backing Up Configurations” section on page 46-21</a> for more information.
Restore Configurations	Restores the ASA configuration, a Cisco Secure Desktop image, and SSL VPN Client images and profiles. See the <a href="#">“Restoring Configurations” section on page 46-25</a> for more information.
System Reload	Restarts the ASDM and reload the saved configuration into memory. See the <a href="#">“Scheduling a System Restart” section on page 46-28</a> for more information.
Administrator’s Alerts to Clientless SSL VPN Users	Enables an administrator to send an alert message to clientless SSL VPN users. See the Capturing Data section in the VPN configuration guide for more information.

Tools Menu Item	Description
Migrate Network Object Group Members	<p>If you migrate to 8.3 or later, the ASA creates named network objects to replace inline IP addresses in some features. In addition to named objects, ASDM automatically creates non-named objects for any IP addresses used in the configuration. These auto-created objects are identified by the <i>IP address</i> only, do not have a name, and are not present as named objects in the platform configuration.</p> <p>When the ASA creates named objects as part of the migration, the matching non-named ASDM-only objects are replaced with the named objects. The only exception are non-named objects in a network object group. When the ASA creates named objects for IP addresses that are inside a network object group, ASDM retains the non-named objects as well, creating duplicate objects in ASDM. To merge these objects, choose <b>Tools &gt; Migrate Network Object Group Members</b>.</p> <p>See <i>Cisco ASA 5500 Migration to Version 8.3 and Later</i> for more information.</p>
Preferences	Changes the behavior of specified ASDM functions between sessions. See the <a href="#">“Defining ASDM Preferences” section on page 4-32</a> for more information.
ASDM Java Console	Shows the Java console. See the <a href="#">“Viewing and Copying Logged Entries with the ASDM Java Console” section on page 41-13</a> for more information.

## Wizards Menu

The Wizards menu lets you run a wizard to configure multiple features. The following table lists the available Wizards and their features.

Wizards Menu Item	Description
Startup Wizard	Guides you, step-by-step, through the initial configuration of the ASA. For more information, see <a href="#">Chapter 7, “Using the Startup Wizard.”</a>
IPsec VPN Wizard	Enables you to configure an IPsec VPN policy on the ASA. For more information, see Chapter 73, “VPN Wizards,” in the VPN configuration guide.
SSL VPN Wizard	Enables you to configure an SSL VPN policy on the ASA. For more information, see Chapter 73, “VPN Wizards,” in the VPN configuration guide.



Wizards Menu Item	Description
High Availability and Scalability Wizard	<p>Allows you to configure failover: VPN cluster load balancing, or ASA clustering on the ASA. For more information, see:</p> <ul style="list-style-type: none"> <li>• Active/Standby failover—See the “<a href="#">Configuring Active/Standby Failover</a>” section on page 9-25.</li> <li>• Active/Active failover—See the “<a href="#">Configuring Active/Active Failover</a>” section on page 9-32.</li> <li>• VPN cluster load balancing—See the Configuring VPN Cluster Load Balancing with the High Availability and Scalability Wizard section in the VPN configuration guide.</li> <li>• ASA clustering—See the “<a href="#">Adding or Joining an ASA Cluster</a>” section on page 10-50.</li> </ul>
Unified Communication Wizard	<p>Enables you to configure unified communication features, such as an IP phone, on the ASA. For more information, see Chapter 15, “Information about the Cisco Unified Communication Wizard,” in the firewall configuration guide.</p>
Packet Capture Wizard	<p>Allows you to configure packet capture on the ASA. The wizard runs one packet capture on each ingress and egress interface. After you run the capture, you can save it on your computer, and then examine and analyze the capture with a packet analyzer. For more information, see the “<a href="#">Configuring and Running Captures with the Packet Capture Wizard</a>” section on page 47-1.</p>

## Window Menu

The Window menu enables you to move between ASDM windows. The active window appears as the selected window.

## Help Menu

The Help menu provides links to online Help, as well as information about ASDM and the ASA. The following table lists the tasks that you can perform using the Help menu.

Help Menu Items	Description
Help Topics	<p>Opens a new browser window with help organized by contents, window name, and indexed in the left frame. Use these methods to find help for any topic, or search using the Search tab.</p>
Help for Current Screen	<p>Opens context-sensitive help about that screen. The wizard runs the screen, pane, or dialog box that is currently open. Alternatively, you can also click the question mark (?) help icon.</p>
Release Notes	<p>Opens the most current version of the <i>ASDM release notes</i> on Cisco.com. The release notes contain the most current information about ASDM software and hardware requirements, and the most current information about changes in the software.</p>

Help Menu Items	Description
ASDM Assistant	Opens the ASDM Assistant, which lets you search downloadable content from Cisco.com, with details about performing certain tasks.
About Cisco Adaptive Security Appliance (ASA)	Displays information about the ASA, including the software version, hardware set, configuration file loaded at startup, and software image loaded at startup. This information is helpful in troubleshooting.
About Cisco ASDM	Displays information about ASDM such as the software version, hostname, privilege level, operating system, device type, and Java version.

## Toolbar

The Toolbar below the menus provides access to the Home view, Configuration view, and Monitoring view. It also lets you choose between the system and security contexts in multiple context mode, and provides navigation and other commonly used features. The following table lists the tasks that you can perform using the Toolbar.

Toolbar Button	Description
System/Contexts	Shows which context you are in. To open the context list in the left-hand pane, click the down arrow, then click the up arrow to restore the context drop-down list. After you have expanded this list, click the left arrow to collapse the pane, then the right arrow to restore the pane. To manage the system, choose <b>System</b> from the drop-down list. To manage the context, choose one from the drop-down list.
Home	Displays the Home pane, which lets you view important information about your ASA such as the status of your interfaces, the version you are running, licensing information, and performance. See the <a href="#">“Home Pane (Single Mode and Context)”</a> section on page 4-17 for more information. In multiple mode, the system does not have a Home pane.
Configuration	Configures the ASA. Click a function button in the left Navigation pane to configure that function.
Monitoring	Monitors the ASA. Click a function button in the left Navigation pane to configure that function.
Back	Returns to the last pane of ASDM that you visited.
Forward	Goes forward to the last pane of ASDM that you visited.
Search	Searches for a feature in ASDM. The Search function looks through the titles of each pane and presents you with a list of matches, and gives you a hyperlink directly to that pane. If you need to switch quickly between two different panes that you found, click <b>Back</b> or <b>Forward</b> . See the <a href="#">“ASDM Assistant”</a> section on page 4-11 for more information.
Refresh	Refreshes ASDM with the current running configuration, except for graphs in any of the Monitoring panes.
Save	Saves the running configuration to the startup configuration for write-accessible contexts only.
Help	Shows context-sensitive help for the screen that is currently open.

## ASDM Assistant

The ASDM Assistant lets you search and view useful ASDM procedural help about certain tasks. This feature is available in routed and transparent modes, and in the single and system contexts.

To access information, choose **View > ASDM Assistant > How Do I?** or enter a search request from the Look For field in the menu bar. From the Find drop-down list, choose **How Do I?** to begin the search.

To use the ASDM Assistant, perform the following steps:

- 
- Step 1** In the main ASDM application window, choose **View > ASDM Assistant**.  
The ASDM Assistant pane appears.
  - Step 2** In the Search field, enter the information that you want to find, and click **Go**.  
The requested information appears in the Search Results pane.
  - Step 3** Click any links that appear in the Search Results and Features areas to obtain more details.
- 

## Status Bar

The status bar appears at the bottom of the ASDM window. The following table lists the areas shown from left to right.

Area	Description
Status	The status of the configuration (for example, “Device configuration loaded successfully.”)
Failover	The status of the failover unit, either active or standby.
User Name	The username of the ASDM user. If you logged in without a username, the username is “admin.”
User Privilege	The privilege of the ASDM user.
Commands Ignored by ASDM	Click the icon to show a list of commands from your configuration that ASDM did not process. These commands will not be removed from the configuration.
Connection to Device	The ASDM connection status to the ASA. See the <a href="#">“Connection to Device” section on page 4-12</a> for more information.
Syslog Connection	The syslog connection is up, and the ASA is being monitored.
SSL Secure	The connection to ASDM is secure because it uses SSL.
Time	The time that is set on the ASA.

## Connection to Device

ASDM maintains a constant connection to the ASA to maintain up-to-date Monitoring and Home pane data. This dialog box shows the status of the connection. When you make a configuration change, ASDM opens a second connection for the duration of the configuration, and then closes it; however, this dialog box does not represent the second connection.

## Device List

The device list is a dockable pane. You can click one of the three buttons in the header to maximize or restore this pane, make it a floating pane that you can move, hide it, or close it. This pane is available in the Home, Configuration, Monitoring, and System views. You can use this pane to switch to another device; however, that device must run the same version of ASDM that you are currently running. To display the pane fully, you must have at least two devices listed. This feature is available in routed and transparent modes, and in the single, multiple, and system contexts.

To use this pane to connect to another device, perform the following steps:

- 
- Step 1** Click **Add** to add another device to the list.  
The Add Device dialog box appears.
  - Step 2** In the Device/IP Address/Name field, type the device name or IP address of the device, and then click **OK**.
  - Step 3** Click **Delete** to remove a selected device from the list.
  - Step 4** Click **Connect** to connect to another device.  
The Enter Network Password dialog box appears.
  - Step 5** Type your username and password in the applicable fields, and then click **Login**.
- 

## Common Buttons

Many ASDM panes include buttons that are listed in the following table. Click the applicable button to complete the desired task:

Button	Description
Apply	Sends changes made in ASDM to the ASA and applies them to the running configuration.
Save	Writes a copy of the running configuration to flash memory.
Reset	Discards changes and reverts to the information displayed before changes were made or the last time that you clicked Refresh or Apply. After you click <b>Reset</b> , click <b>Refresh</b> to make sure that information from the current running configuration appears.
Restore Default	Clears the selected settings and returns to the default settings.
Cancel	Discards changes and returns to the previous pane.

Button	Description
Enable	Displays read-only statistics for a feature.
Close	Closes an open dialog box.
Clear	Remove information from a field, or remove a check from a check box.
Back	Returns to the previous pane.
Forward	Goes to the next pane.
Help	Displays help for the selected pane or dialog box.

## Keyboard Shortcuts

You can use the keyboard to navigate the ASDM user interface.

Table 4-1 lists the keyboard shortcuts you can use to move across the three main areas of the ASDM user interface.

**Table 4-1** Keyboard Shortcuts Within the Main Window

To display the	Windows/Linux	MacOS
Home Pane	Ctrl+H	Shift+Command+H
Configuration Pane	Ctrl+G	Shift+Command+G
Monitoring Pane	Ctrl+M	Shift+Command+M
Help	F1	Command+?
Back	Alt+Left Arrow	Command+[
Forward	Alt+Rightarrow	Command+]
Refresh the display	F5	Command+R
Cut	Ctrl+X	Command+X
Copy	Ctrl+C	Command+C
Paste	Ctrl+V	Command+V
Save the configuration	Ctrl+S	Command+S
Popup menus	Shift+F10	—
Close a secondary window	Alt+F4	Command+W
Find	Ctrl+F	Command+F
Exit	Alt+F4	Command+Q
Exit a table or text area	Ctrl_Shift or Ctrl+Shift+Tab	Ctrl+Shift or Ctrl+Shift+Tab

Table 4-2 lists the keyboard shortcut you can use to navigate within a pane.

**Table 4-2 Keyboard Shortcuts Within a Pane**

To move the focus to the	Press
Next field	Tab
Previous field	Shift+Tab
Next field when the focus is in a table	Ctrl+Tab
Previous field when the focus is in a table	Shift+Ctrl+Tab
Next tab (when a tab has the focus)	Right Arrow
Previous tab (when a tab has the focus)	Left Arrow
Next cell in a table	Tab
Previous cell in a table	Shift+Tab
Next pane (when multiple panes are displayed)	F6
Previous pane (when multiple panes are displayed)	Shift+F6

Table 4-3 lists the keyboard shortcuts you can use with the Log Viewers.

**Table 4-3 Keyboard Shortcuts for the Log Viewer**

To	Windows/Linux	MacOS
Pause and Resume Real-Time Log Viewer	Ctrl+U	Command+
Refresh Log Buffer Pane	F5	Command+R
Clear Internal Log Buffer	Ctrl+Delete	Command+Delete
Copy Selected Log Entry	Ctrl+C	Command+C
Save Log	Ctrl+S	Command+S
Print	Ctrl+P	Command+P
Close a secondary window	Alt+F4	Command+W

Table 4-4 lists the keyboard shortcuts you can use to access menu items.

**Table 4-4 Keyboard Shortcuts to Access Menu Items**

To access the	Windows/Linux
Menu Bar	Alt
Next Menu	Right Arrow
Previous Menu	Left Arrow
Next Menu Option	Down Arrow
Previous Menu Option	Up Arrow
Selected Menu Option	Enter

# Find Function

This section includes the following topics:

- [Using the Find Function in Most ASDM Panes, page 4-15d](#)
- [Using the Find Function in the ACL Manager Pane, page 4-16](#)

## Using the Find Function in Most ASDM Panes

Some ASDM panes contain tables with many elements. To make it easier for you to search, highlight, and then edit a particular entry, several ASDM panes have a find function that allows you to search on objects within those panes.

To perform a search, you can type a phrase into the Find field to search on all columns within any given pane. The phrase can contain the wild card characters “\*” and “?”. The \* matches one or more characters, and ? matches one character. The up and down arrows to the right of the Find field locate the next (up) or previous (down) occurrence of the phrase. Check the Match Case check box to find entries with the exact uppercase and lowercase characters that you enter.

For example, entering B\*ton-L\* might return the following matches:

```
Boston-LA, Boston-Lisbon, Boston-London
```

Entering Bo?ton might return the following matches:

```
Boston, Bolton
```

The following list shows the ASDM panes in which you can use the find function:

- AAA Server Groups panes
- ACL Manager panes—The find function in the ACL Manager pane differs from that of the other panes. See the [“Using the Find Function in the ACL Manager Pane”](#) section on page 4-16 for more information.
- Certificate-to-Conn Profile Maps-Rules pane
- DAP panes
- Identity Certificates pane
- IKE Policies pane
- IPSec Proposals (Transform Sets) pane
- Local User panes
- Portal-Bookmark pane
- Portal-Customization panes
- Portal-Port Forwarding pane
- CA Certificates pane
- Portal-Smart Tunnels pane
- Portal-Web Contents pane
- VPN Connection Profiles panes
- VPN Group Policies panes

## Using the Find Function in the ACL Manager Pane

Because ACLs and ACEs contain many elements of different types, the find function in the ACL Manager pane allows for a more targeted search than the find function in other panes.

To find elements within the ACL Manager pane, perform the following steps:

- 
- Step 1** In the ACL Manager pane, click **Find**.
- Step 2** In the Filter field, choose one of the following options from the drop-down list:
- **Source**—The search includes a source IP address of a the network object group, interface IP, or any address from which traffic is permitted or denied. You specify this address in [Step 4](#).
  - **Destination**—The search includes a destination IP address (host or network) that is permitted or denied to send traffic to the IP addresses listed in the Source section. You specify this address in [Step 4](#).
  - **Source or Destination**—The search includes either a source or a destination address that you specify in [Step 4](#).
  - **Service**—The search includes a service group or predefined service policy that you specify in [Step 4](#).
  - **Query**—When you choose Query from the drop-down list, click **Query** to specify a detailed search by all four of the preceding options: Source, Destination, Source or Destination, and Service.
- Step 3** In the second field, choose one of the following options from the drop-down list:
- **is**—Specifies an exact match of the detail that you enter in [Step 4](#).
  - **contains**—Specifies to search for ACLs or ACEs that contain, but are not limited to, the detail you enter in [Step 4](#).
- Step 4** In the third field, enter specific criteria about ACLs or ACEs that you would like to find, or click the browse button to search for key elements in your ACL/ACE configuration.
- Step 5** Click **Filter** to perform the search.
- The ASDM find function returns a list of ACLs and ACEs that contain your specified criteria.
- Step 6** Click **Clear** to clear the list of found ACLs and ACEs.
- Step 7** Click the red **x** to close the find function box.
- 

## Enabling Extended Screen Reader Support

By default, labels and descriptions are not included in tab order when you press the Tab key to navigate a pane. Some screen readers, such as JAWS, only read screen objects that have the focus. You can include the labels and descriptions in the tab order by enabling extended screen reader support.

To enable extended screen reader support, perform the following steps:

- 
- Step 1** In the main ASDM application window, choose **Tools > Preferences**.
- The Preferences dialog box appears.
- Step 2** On the General tab, check the **Enable screen reader support** check box.



- Step 3** Click **OK**.
- Step 4** Restart ASDM to activate screen reader support.

## Organizational Folder

Some folders in the navigation pane for the configuration and monitoring views do not have associated configuration or monitoring panes. These folders are used to organize related configuration and monitoring tasks. Clicking these folders displays a list of sub-items in the right Navigation pane. You can click the name of a sub-item to go to that item.

## About the Help Window

To obtain the information that you need, click the applicable button listed in the following table.

Button	Description
About ASDM	Displays information about ASDM, including the hostname, version number, device type, ASA software version number, privilege level, username, and operating system being used.
Search	Searches for information among online help topics.
Using Help	Describes the most efficient methods for using online help.
Glossary	Lists terms found in ASDM and ASAs.
Contents	Displays a table of contents.
Screens	Lists help files by screen name.
Index	Displays an index of help topics found in ASDM online help.

## Home Pane (Single Mode and Context)

The ASDM Home pane lets you view important information about your ASA. Status information in the home pane is updated every ten seconds. This pane usually has two tabs: Device Dashboard and Firewall Dashboard.

If you have a CSC SSM installed in your ASA, the Content Security tab also appears in the Home pane. The additional tab displays status information about the CSC SSM software.

If you have IPS software installed in your ASA, the Intrusion Prevention tab also appears in the Home pane. The additional tab displays status information about the IPS software.

This section includes the following topics:

- [Device Dashboard Tab, page 4-18](#)
- [Firewall Dashboard Tab, page 4-22](#)
- [Cluster Dashboard Tab, page 4-25](#)
- [Cluster Firewall Dashboard Tab, page 4-26](#)

- [Content Security Tab, page 4-27](#)
- [Intrusion Prevention Tab, page 4-28](#)
- [ASA CX Status Tab, page 4-30](#)

## Device Dashboard Tab

The Device Dashboard tab lets you view, at a glance, important information about your ASA, such as the status of your interfaces, the version you are running, licensing information, and performance.

Figure 4-2 shows the elements of the Device Dashboard tab.

**Figure 4-2** Device Dashboard Tab

### Legend

GUI Element	Description
1	<a href="#">Device Information Pane, page 4-19</a>
2	<a href="#">Interface Status Pane, page 4-20</a>
3	<a href="#">VPN Sessions Pane, page 4-20</a>
4	<a href="#">Traffic Status Pane, page 4-20</a>
5	<a href="#">System Resources Status Pane, page 4-20</a>
6	<a href="#">Traffic Status Pane, page 4-20</a>

GUI Element	Description
—	<a href="#">Device List, page 4-12</a>
—	<a href="#">Latest ASDM Syslog Messages Pane, page 4-21</a>

## Device Information Pane

The Device Information pane includes two tabs that show device information: General tab and License tab. Under the General tab you have access to the Environment Status button, which provides an at-a-glance view of the system health:

- [General Tab, page 4-19](#)
- [License Tab, page 4-20](#)
- [Cluster Tab, page 4-20](#)

### General Tab

This tab shows basic information about the ASA:

- Host name—Shows the hostname of the device.
- ASA version—Lists the version of ASA software that is running on the device.
- ASDM version—Lists the version of ASDM software that is running on the device.
- Firewall mode—Shows the firewall mode in which the device is running.
- Total flash—Displays the total RAM that is currently being used.
- ASA Cluster Role—When you enable clustering, shows the role of this unit, either Master or Slave.
- Device uptime—Shows the time in which the device has been operational since the latest software upload.
- Context mode—Shows the context mode in which the device is running.
- Total Memory—Shows the DRAM installed on the ASA.
- Environment status—Shows the system health. The ASA 5580 and 5585 chassis models provide a set of hardware statistics that is available by clicking the plus sign (+) to the right of the Environment Status label in the General tab. You can see how many power supplies are installed, track the operational status of the fan and power supply modules, and track the temperatures of the CPUs and the ambient temperature of the system.

In general, the Environment Status button provides an at-a-glance view of the system health. If all monitored hardware components within the system are operating within normal ranges, the plus sign (+) button shows OK in green. Conversely, if any one component within the hardware system is operating outside of normal ranges, the plus sign (+) button turns into a red circle to show Critical status and to indicate that a hardware component requires immediate attention.

For more information about specific hardware statistics, see the hardware guide for your particular device.



#### Note

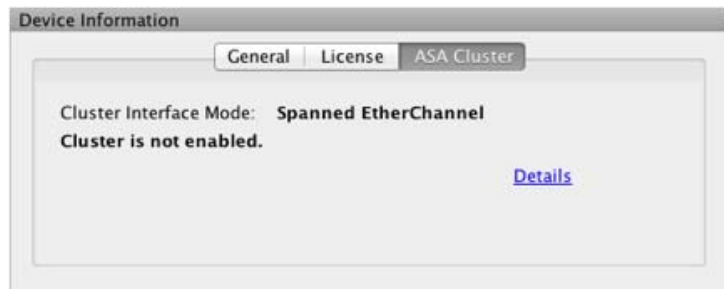
If you do not have enough memory to upgrade to the most current release of the ASA, the Memory Insufficient Warning dialog box appears. Follow the directions that appear in this dialog box to continue using the ASA and ASDM in a supported manner. Click **OK** to close this dialog box.

## License Tab

This tab shows a subset of licensed features. To view detailed license information, or to enter a new activation key, click **More Licenses**; the Configuration > Device Management > Licensing > Activation Key pane appears. See Chapter 5, “Managing Feature Licenses.”

## Cluster Tab

This tab shows the cluster interface mode, as well as the cluster status



## Interface Status Pane

This pane shows the status of each interface. If you select an interface row, the input and output throughput in Kbps displays below the table.

## VPN Sessions Pane

This pane shows the VPN tunnel status. Click **Details** to go to the Monitoring > VPN > VPN Statistics > Sessions pane.

## Failover Status Pane

This pane shows the failover status.

Click **Configure** to start the High Availability and Scalability Wizard. After you have completed the wizard, the failover configuration status (either Active/Active or Active/Standby) appears.

If failover is configured, click **Details** to open the Monitoring > Properties > Failover > Status pane.

## System Resources Status Pane

This pane shows CPU and memory usage statistics.

## Traffic Status Pane

This pane shows graphs for connections per second for all interfaces and for the traffic throughput of the lowest security interface.

When your configuration contains multiple lowest security level interfaces, and any one of them is named “outside,” then that interface is used for the traffic throughput graphs. Otherwise, ASDM picks the first interface from the alphabetical list of lowest security level interfaces.

## Latest ASDM Syslog Messages Pane

This pane shows the most recent system messages generated by the ASA, up to a maximum of 100 messages. If logging is disabled, click **Enable Logging** to enable logging.

Figure 4-3 shows the elements of the Latest ASDM Syslog Messages pane.

Figure 4-3 Latest ASDM Syslog Messages Pane



### Legend

GUI Element	Description
1	To resize the pane, drag the divider up or down.
2	Expands the pane. To return the pane to the default size, click the double-square icon.
3	Makes a floating pane. To dock the pane, click the docked pane icon.
4	Enables or disables Auto-hide. When Auto-hide is enabled, move your cursor over the Latest ASDM Syslog Messages button in the left, bottom corner and the pane displays. Move your cursor away from the pane, and it disappears.
5	Closes the pane. To show the pane, choose <b>View Latest ASDM Syslog Messages</b> .
6	To continue updating the display of syslog messages, click the green icon on the right-hand side.
7	To stop updating the display of syslog messages, click the red icon on the right-hand side.
8	To open the Logging Filters pane, click the filters icon on the right-hand side.

- To clear the current messages, right-click an event and click **Clear Content**.
- To save the current messages to a file on your PC, right-click an event and click **Save Content**.
- To copy the current content, right-click an event and click **Copy**.
- To change the background and foreground colors of syslog messages according to their severity, right-click an event and click **Color Settings**.

## Firewall Dashboard Tab

The Firewall Dashboard tab lets you view important information about the traffic passing through your ASA. This dashboard differs depending on whether you are in single context mode or multiple context mode. In multiple context mode, the Firewall Dashboard is viewable within each context.

Figure 4-4 shows some of the elements of the Firewall Dashboard tab.

**Figure 4-4** Firewall Dashboard Tab



### Legend

GUI Element	Description
1	Traffic Overview Pane, page 4-23
2	Top 10 Access Rules Pane, page 4-23
3	Top Usage Status Pane, page 4-23
(not shown)	Top Ten Protected Servers Under SYN Attack Pane, page 4-24
(not shown)	Top 200 Hosts Pane, page 4-24
(not shown)	Top Botnet Traffic Filter Hits Pane, page 4-24

## Traffic Overview Pane

Enabled by default. If you disable basic threat detection (see the Configuring Basic Threat Detection Statistics section in the firewall configuration guide), then this area includes an Enable button that lets you enable basic threat detection. The runtime statistics include the following information, which is *display-only*:

- The number of connections and NAT translations.
- The rate of dropped packets per second caused by access list denials and application inspections.
- The rate of dropped packets per second that are identified as part of a scanning attack, or that are incomplete sessions detected, such as TCP SYN attack detected or no data UDP session attack detected.

## Top 10 Access Rules Pane

Enabled by default. If you disable threat detection statistics for access rules (see the Configuring Advanced Threat Detection Statistics section in the firewall configuration guide), then this area includes an Enable button that lets you enable statistics for access rules.

In the Table view, you can select a rule in the list and right-click the rule to display a popup menu item, **Show Rule**. Choose this item to go to the Access Rules table and select that rule in this table.

## Top Usage Status Pane

Disabled by default. This pane contains the following four tabs:

- Top 10 Services—Threat Detection feature
- Top 10 Sources—Threat Detection feature
- Top 10 Destinations—Threat Detection feature
- Top 10 Users—Identity Firewall feature

The first three tabs—Top 10 Services, Top 10 Sources, and Top 10 Destinations—provide statistics for threat detection features. Each tab includes an Enable button that let you enable each threat detection feature. You can enable them according to the Configuring Basic Threat Detection Statistics section in the firewall configuration guide.

The Top 10 Services Enable button enables statistics for both ports and protocols (both must be enabled for the display). The Top 10 Sources and Top 10 Destinations Enable buttons enable statistics for hosts. The top usage status statistics for hosts (sources and destinations), and ports and protocols are displayed.

The fourth tab for Top 10 Users provides statistics for the Identity Firewall feature. The Identity Firewall feature provides access control based on users' identities. You can configure access rules and security policies based on user names and user groups name rather than through source IP addresses. The ASA provides this feature by accessing an IP-user mapping database.

The Top 10 Users tab displays data only when you have configured the Identity Firewall feature in the ASA, which includes configuring these additional components—Microsoft Active Directory and Cisco Active Directory (AD) Agent. See the [Configuring the Identity Firewall, page 38-10](#) for information.

Depending on which option you choose, the Top 10 Users tab shows statistics for received EPS packets, sent EPS packets, and sent attacks for the top 10 users. For each user (displayed as *domain\user\_name*), the tab displays the average EPS packet, the current EPS packet, the trigger, and total events for that user.

**Caution**

Enabling statistics can affect the ASA performance, depending on the type of statistics enabled. Enabling statistics for hosts affects performance in a significant way; if you have a high traffic load, you might consider enabling this type of statistics temporarily. Enabling statistics for ports, however, has a modest effect.

## Top Ten Protected Servers Under SYN Attack Pane

Disabled by default. This area includes an Enable button that lets you enable the feature, or you can enable it according to the Configuring Basic Threat Detection Statistics section in the firewall configuration guide. Statistics for the top ten protected servers under attack are displayed.

For the average rate of attack, the ASA samples the data every 30 seconds over the rate interval (by default 30 minutes).

If there is more than one attacker, then “<various>” displays, followed by the last attacker IP address.

Click **Detail** to view statistics for all servers (up to 1000) instead of just 10 servers. You can also view history sampling data. The ASA samples the number of attacks 60 times during the rate interval, so for the default 30-minute period, statistics are collected every 60 seconds.

## Top 200 Hosts Pane

Disabled by default. Shows the top 200 hosts connected through the ASA. Each entry of a host contains the IP address of the host and the number of connections initiated by the host, and is updated every 120 seconds. To enable this display, enter the **hpm topnable** command.

## Top Botnet Traffic Filter Hits Pane

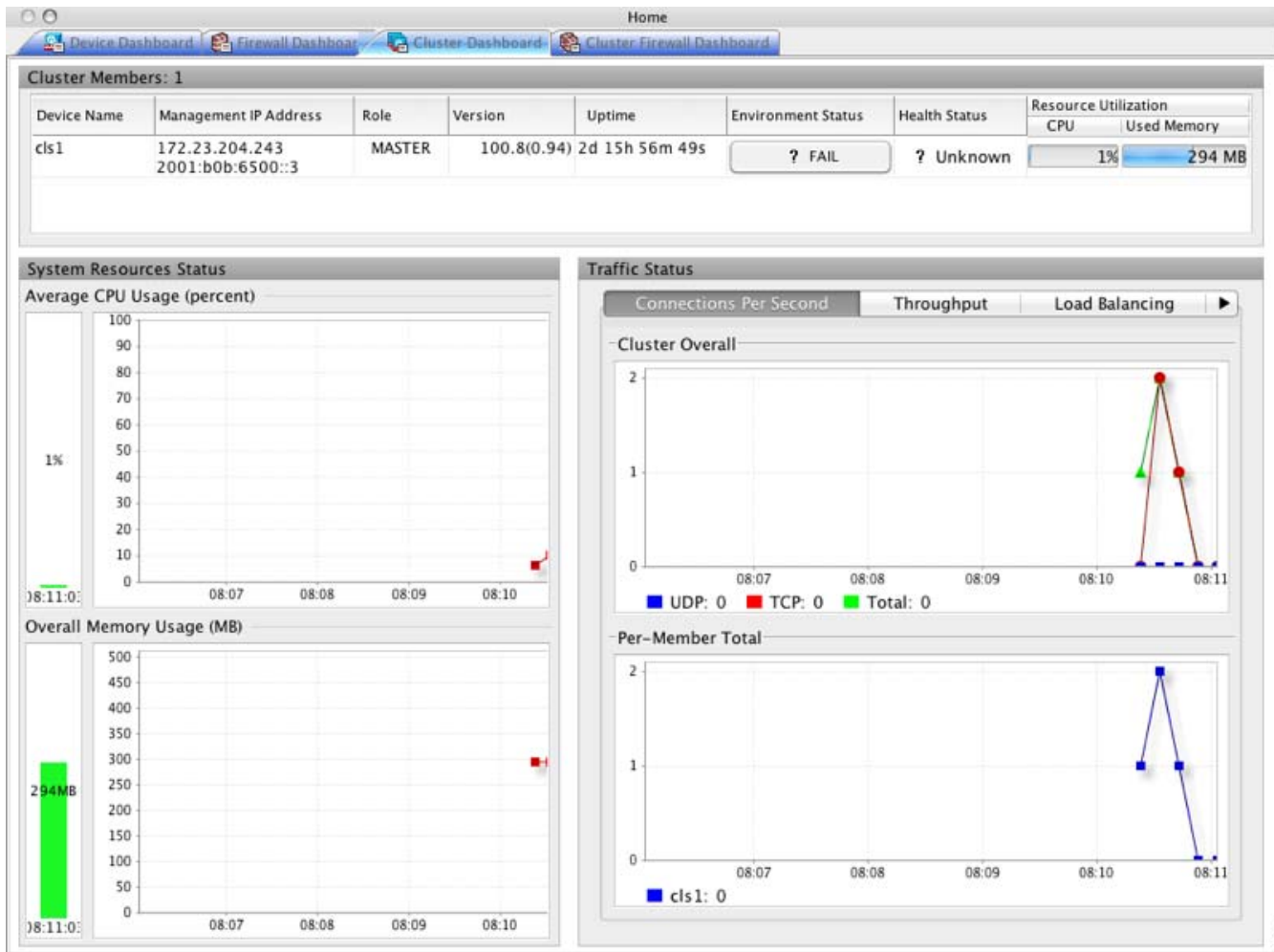
Disabled by default. This area includes links to configure the Botnet Traffic Filter. Reports of the top ten botnet sites, ports, and infected hosts provide a snapshot of the data, and may not match the top ten items since statistics started to be collected. If you right-click an IP address, you can invoke the whois tool to learn more about the botnet site.

For more information, see Chapter 26, “Configuring the Botnet Traffic Filter,” in the firewall configuration guide.



## Cluster Dashboard Tab

The Cluster Dashboard tab shows a summary of cluster membership and resource utilization.



- **Cluster Members**—Shows the names and basic information about the members comprising the cluster (their management IP address, version, role in the cluster, etc.) and their health status (environment status, Health Status, and resource utilization meters).



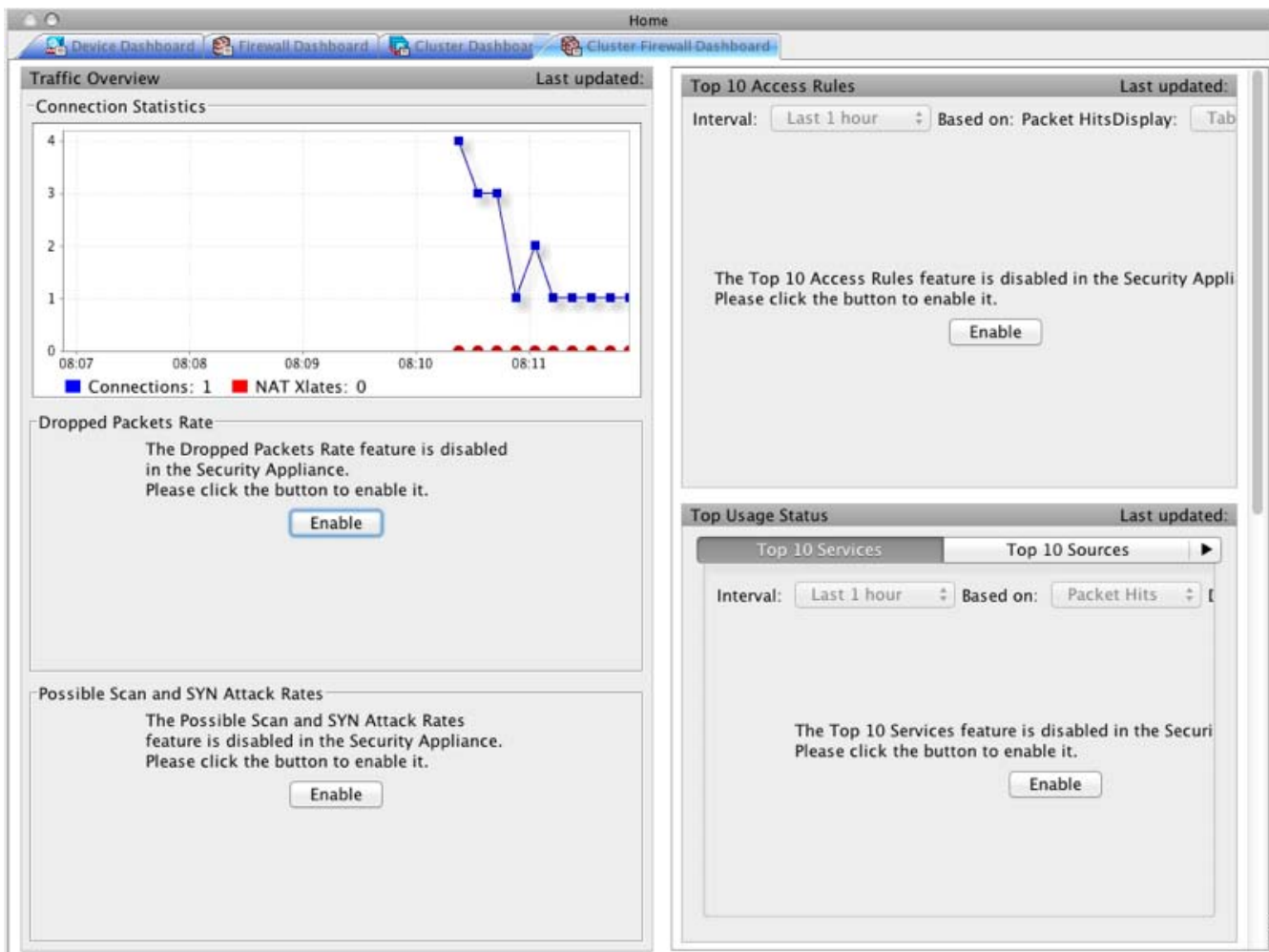
**Note** In multiple context mode, if you connect ASDM to the admin context, and then change to a different context, the Management IP Address listed does not change to show the current context management IP addresses; it continues to show the admin context management IP addresses, including the main cluster IP address to which ASDM is currently connected.

- **System Resource Status**—Shows resource utilization (CPU and memory) across the cluster and traffic graphs, both cluster-wide and per-device.
- **Traffic Status**—Each tab has the following graphs.
  - **Connections Per Second tab:**
    - Cluster Overall—Shows the connections per second throughout the cluster.

- Per-Member Total—Shows the average connections per second for each member.
- Throughput tab:
  - Cluster Overall—Shows the aggregated egress throughput throughout the cluster.
  - Per-Member Throughput—Shows the member throughput, one line per member.
- Load Balancing tab:
  - Per-Member Percentage of Total Traffic—For each member, shows the percentage of total cluster traffic that the member receives.
  - Per-Member Locally Processed Traffic—For each member, shows the percentage of traffic that was processed locally.
- Control Link Usage tab:
  - Per-Member Receival Capacity Utilization—For each member, shows the usage of the transmittal capacity.
  - Per-Member Transmittal Capacity Utilization—For each member, shows the usage of the receival capacity.

## Cluster Firewall Dashboard Tab

The Cluster Firewall Dashboard tab shows Traffic Overview and the “top N” statistics, similar to those shown in the Firewall Dashboard, but aggregated across the whole cluster.



## Content Security Tab

The Content Security tab lets you view important information about the Content Security and Control (CSC) SSM. This pane appears only if CSC software running on the CSC SSM is installed in the ASA.

For an introduction to the CSC SSM, see the Information About the CSC SSM section in the firewall configuration guide.

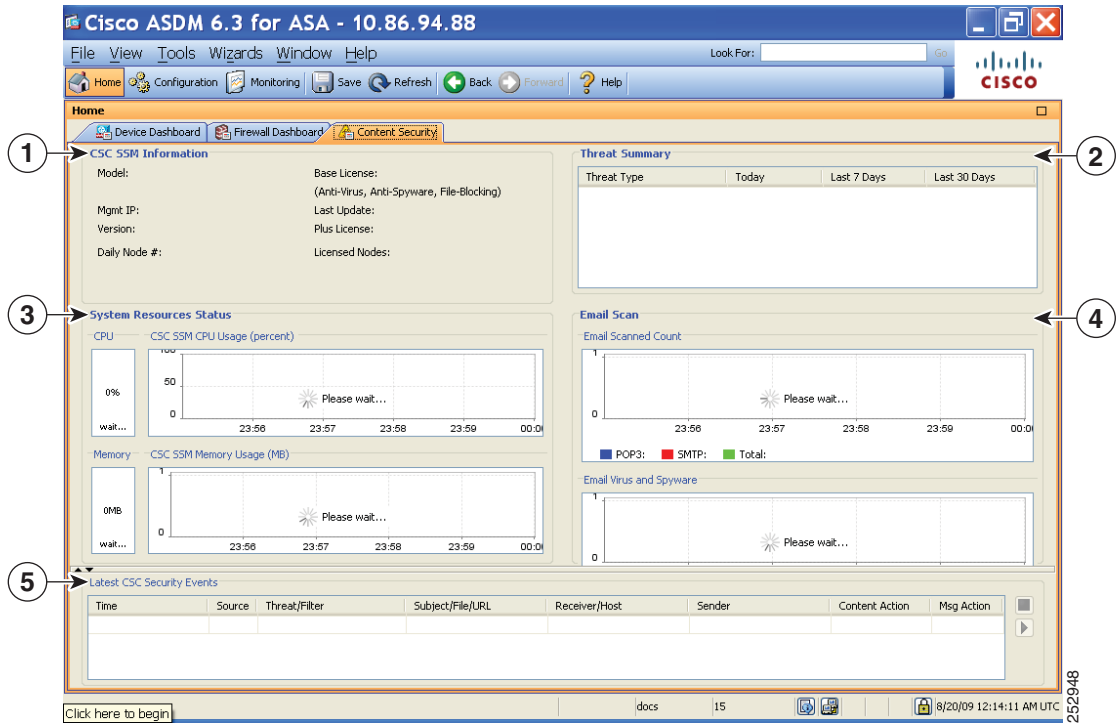


### Note

If you have not completed the CSC Setup Wizard by choosing **Configuration > Trend Micro Content Security > CSC Setup**, you cannot access the panes under Home > Content Security. Instead, a dialog box appears and lets you access the CSC Setup Wizard directly from this location.

Figure 4-5 shows the elements of the Content Security tab.

Figure 4-5 Content Security Tab



### Legend

GUI Element	Description
1	CSC SSM Information pane.
2	Threat Summary pane. Shows aggregated data about threats detected by the CSC SSM, including the following threat types: Virus, Spyware, URL Filtered or Blocked, Spam. Blocked, Files Blocked, and Damage Control Services.
3	System Resources Status pane.
4	Email Scan pane. The graphs display data in ten-second intervals.
5	Latest CSC Security Events pane.

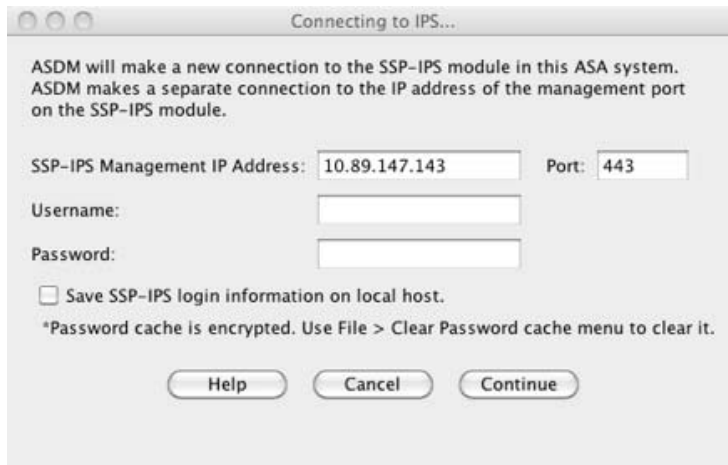
## Intrusion Prevention Tab

The Intrusion Prevention tab lets you view important information about IPS. This tab appears only when you have an IPS module installed on the ASA.

To connect to the IPS module, perform the following steps:

**Step 1** In the main ASDM application window, click the **Intrusion Prevention** tab.

The Connecting to IPS dialog box appears.



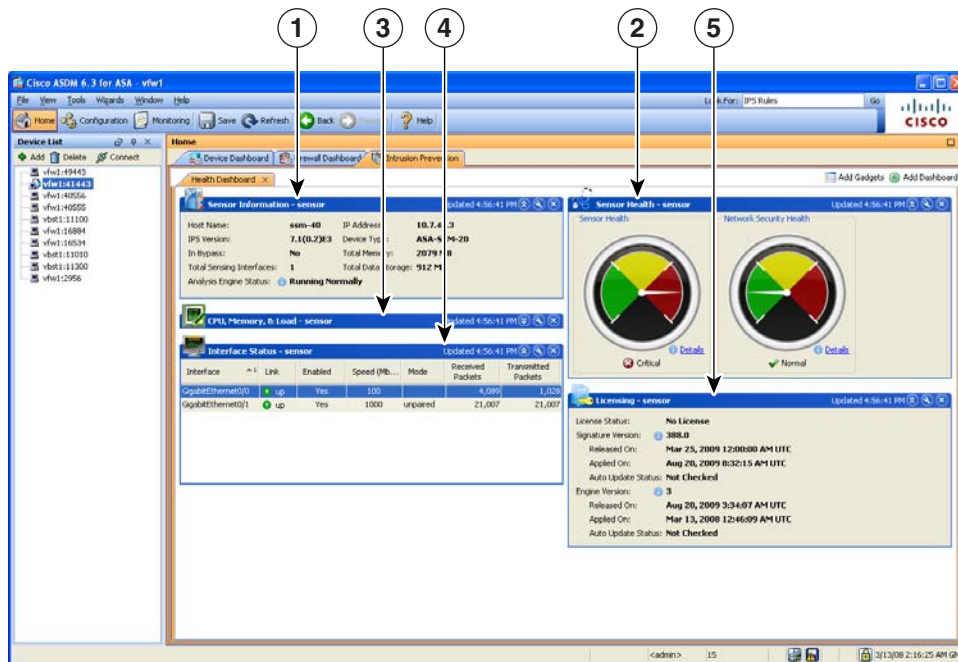
255100

- Step 2** Enter the IP address, port, username and password. The default IP address and port is 192.168.1.2:443. The default username and password is **cisco** and **cisco**
- Step 3** To save the login information on your local PC, check the **Save IPS login** information on local host check box.
- Step 4** Click **Continue**.

For more information about intrusion prevention, see Chapter 31, “Configuring the ASA IPS Module,” in the firewall configuration guide.

Figure 4-6 shows the elements of the Health Dashboard tab, located on the Intrusion Prevention tab.

**Figure 4-6** Intrusion Prevention Tab (Health Dashboard)



247351

### Legend

GUI Element	Description
1	Sensor Information pane.
2	Sensor Health pane.
3	CPU, Memory, and Load pane.
4	Interface Status pane.
5	Licensing pane.

## ASA CX Status Tab

The ASA CX Status tab lets you view important information about the ASA CX module. This tab appears only when you have an ASA CX module installed on the ASA.

Home

Device Dashboard Firewall Dashboard ASA CX Status

Device Information		Interface Status	
Last updated: 10:56:39 AM		Last updated: 10:56:39 AM	
Model:	ASA5585-SSP-CX10	Application Name:	ASA CX Security Module
Hardware Version:	1.3	Application Status:	Up
Serial Number:	JAF1543CGRB	Application Status Description:	Normal Operation
Firmware Version:	2.0(13)0	Application Version:	0.6.1
Software Version:	0.6.1	Data plane Status:	Up
MAC Address Range:	70ca.9bf0.1ca0 to 70ca.9bf0.1cab	Status:	Up

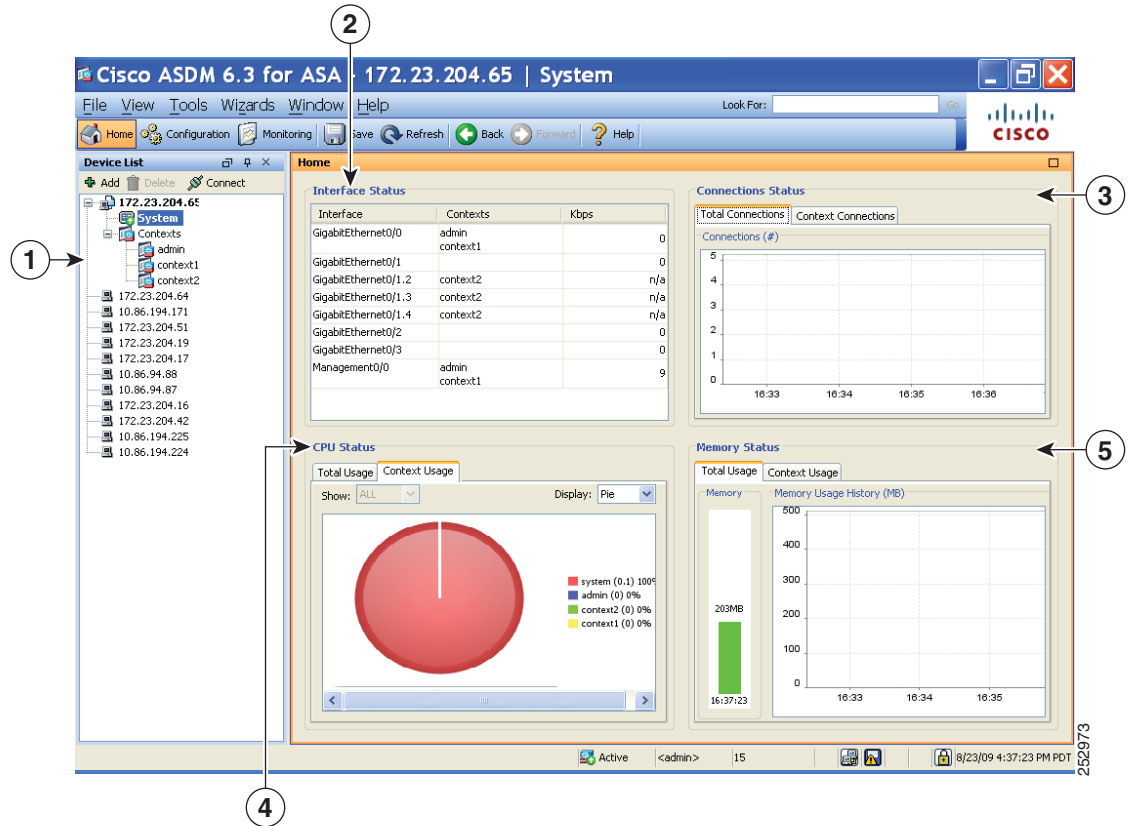
Connect to the ASA CX application: <https://10.89.147.153:443>

# Home Pane (System)

The ASDM System Home pane lets you view important status information about your ASA. Many of the details available in the ASDM System Home pane are available elsewhere in ASDM, but this pane shows at-a-glance how your ASA is running. Status information in the System Home pane is updated every ten seconds.

Figure 4-7 on page 4-31 shows the elements of the System Home pane.

Figure 4-7 System Home Pane



**Legend**

GUI Element	Description
1	System vs. Context selection.
2	Interface Status pane. Choose an interface to view the total amount of traffic through the interface.
3	Connection Status pane.
4	CPU Status pane.
5	Memory Status pane.

# Defining ASDM Preferences

This feature lets you define the behavior of certain ASDM settings.

To change various settings in ASDM, perform the following steps:

- 
- Step 1** In the main ASDM application window, choose **Tools > Preferences**.
- The Preferences dialog box appears, with three tabs: General, Rules Table, and Syslog.
- Step 2** To define your settings, click one of these tabs: the **General** tab to specify general preferences; the **Rules Table** tab to specify preferences for the Rules table; and the **Syslog** tab to specify the appearance of syslog messages displayed in the Home pane and to enable the display of a warning message for NetFlow-related syslog messages.
- Step 3** On the General tab, specify the following:
- a. Check the **Warn that configuration in ASDM is out of sync with the configuration in ASA** check box to be notified when the startup configuration and the running configuration are no longer in sync with each other.
  - b. Check the **Show configuration restriction message to read-only user** check box to display the following message to a read-only user at startup. This option is checked by default.
 

"You are not allowed to modify the ASA configuration, because you do not have sufficient privileges."
  - c. Check the **Confirm before exiting ASDM** check box to display a prompt when you try to close ASDM to confirm that you want to exit. This option is checked by default.
  - d. Check the **Enable screen reader support (requires ASDM restart)** check box to enable screen readers to work. You must restart ASDM to enable this option.
  - e. Check the **Warn of insufficient ASA memory when ASDM loads** check box to receive notification when the minimum amount of ASA memory is insufficient to run complete functionality in the ASDM application. ASDM displays the memory warning in a text banner message at bootup, displays a message in the title bar text in ASDM, and sends a syslog alert once every 24 hours.
  - f. Check the **Preview commands before sending them to the device** check box to view CLI commands generated by ASDM.
  - g. Check the **Enable cumulative (batch) CLI delivery** check box to send multiple commands in a single group to the ASA.
  - h. Enter the minimum amount of time in seconds for a configuration to send a timeout message. The default is 60 seconds.
  - i. To allow the Packet Capture Wizard to display captured packets, enter the name of the network sniffer application or click **Browse** to find it in the file system.
- Step 4** On the Rules Table tab, specify the following:
- a. Display settings let you change the way rules appear in the Rules table.
    - Check the **Auto-expand network and service object groups with specified prefix** check box to display the network and service object groups automatically expanded based on the Auto-Expand Prefix setting.
    - In the Auto-Expand Prefix field, enter the prefix of the network and service object groups to expand automatically when displayed.



- Check the **Show members of network and service object groups** check box to display members of network and service object groups and the group name in the Rules table. If the check box is not checked, only the group name is displayed.
  - In the Limit Members To field, enter the number of network and service object groups to display. When the object group members are displayed, then only the first *n* members are displayed.
  - Check the **Show all actions for service policy rules** check box to display all actions in the Rules table. When unchecked, a summary appears.
- b. Deployment settings let you configure the behavior of the ASA when deploying changes to the Rules table.
- Check the **Issue “clear xlate” command when deploying access lists** check box to clear the NAT table when deploying new access lists. This setting ensures the access lists that are configured on the ASA are applied to all translated addresses.
- c. Access Rule Hit Count Settings let you configure the frequency for which the hit counts are updated in the Access Rules table. Hit counts are applicable for explicit rules only. No hit count will be displayed for implicit rules in the Access Rules table.
- Check the **Update access rule hit counts automatically** check box to have the hit counts automatically updated in the Access Rules table.
  - In the Update Frequency field, specify the frequency in seconds in which the hit count column is updated in the Access Rules table. Valid values are 10 - 86400 seconds.

**Step 5** On the Syslog tab, specify the following:

- In the Syslog Colors area, you can customize the message display by configuring background or foreground colors for messages at each severity level. The Severity column lists each severity level by name and number. To change the background color or foreground color for messages at a specified severity level, click the corresponding column. The Pick a Color dialog box appears. Click one of the following tabs:
  - On the Swatches tab, choose a color from the palette, and click **OK**.
  - On the HSB tab, specify the H, S, and B settings, and click **OK**.
  - On the RGB tab, specify the Red, Green, and Blue settings, and click **OK**.
- In the NetFlow area, to enable the display of a warning message to disable redundant syslog messages, check the **Warn to disable redundant syslog messages when NetFlow action is first applied to the global service policy rule** check box.

**Step 6** After you have specified settings on these three tabs, click **OK** to save your settings and close the Preferences dialog box.



**Note**

Each time that you check or uncheck a preferences setting, the change is saved to the .conf file and becomes available to all the other ASDM sessions running on the workstation at the time. You must restart ASDM for all changes to take effect.

## Using the ASDM Assistant

The ASDM Assistant tool lets you search and view useful ASDM procedural help about certain tasks.

To access information, choose **View > ASDM Assistant > How Do I?** or enter a search request from the Look For field in the menu bar. From the Find drop-down list, choose **How Do I?** to begin the search.

**Note**

This feature is not available on the PIX security appliance.

To view the ASDM Assistant, perform the following steps:

- 
- Step 1** In the main ASDM application window, choose **View > ASDM Assistant**.  
The ASDM Assistant pane appears.
- Step 2** In the Search field, enter the information that you want to find, and click **Go**.  
The requested information appears in the Search Results pane.
- Step 3** Click any links that appear in the Search Results and Features sections to obtain more details.
- 

## Enabling History Metrics

The Configuration > Device Management > Advanced > History Metrics pane lets you configure the adaptive ASA to keep a history of various statistics, which ASDM can display on any Graph/Table. If you do not enable history metrics, you can only monitor statistics in real time. Enabling history metrics lets you view statistics graphs from the last 10 minutes, 60 minutes, 12 hours, and 5 days.

To configure history metrics, perform the following steps:

- 
- Step 1** Choose **Configuration > Device Management > Advanced > History Metrics**.  
The History Metrics pane appears.
- Step 2** Check the **ASDM History Metrics** check box to enable history metrics, and then click **Apply**.

## Unsupported Commands

ASDM supports almost all commands available for the adaptive ASA, but ASDM ignores some commands in an existing configuration. Most of these commands can remain in your configuration; see Tools > Show Commands Ignored by ASDM on Device for more information.

This section includes the following topics:

- [Ignored and View-Only Commands, page 4-35](#)
- [Effects of Unsupported Commands, page 4-35](#)
- [Discontinuous Subnet Masks Not Supported, page 4-36](#)
- [Interactive User Commands Not Supported by the ASDM CLI Tool, page 4-36](#)

## Ignored and View-Only Commands

Table 4-5 lists commands that ASDM supports in the configuration when added through the CLI, but that cannot be added or edited in ASDM. If ASDM ignores the command, it does not appear in the ASDM GUI at all. If the command is view-only, then it appears in the GUI, but you cannot edit it.

**Table 4-5** List of Unsupported Commands

Unsupported Commands	ASDM Behavior
<b>capture</b>	Ignored.
<b>coredump</b>	Ignored. This can be configured only using the CLI.
<b>crypto engine large-mod-accel</b>	Ignored.
<b>dhcp-server</b> (tunnel-group name general-attributes)	ASDM only allows one setting for all DHCP servers.
<b>eject</b>	Unsupported.
<b>established</b>	Ignored.
<b>failover timeout</b>	Ignored.
<b>fips</b>	Ignored.
<b>nat-assigned-to-public-ip</b>	Ignored.
<b>pager</b>	Ignored.
<b>pim accept-register route-map</b>	Ignored. You can configure only the <b>list</b> option using ASDM.
<b>service-policy global</b>	Ignored if it uses a <b>match access-list</b> class. For example:  <pre>access-list myacl extended permit ip any any class-map mycm   match access-list myacl policy-map mypm   class mycm     inspect ftp service-policy mypm global</pre>
<b>set metric</b>	Ignored.
<b>sysopt nodnsalias</b>	Ignored.
<b>sysopt uauth allow-http-cache</b>	Ignored.
<b>terminal</b>	Ignored.
<b>threat-detection rate</b>	Ignored.

## Effects of Unsupported Commands

If ASDM loads an existing running configuration and finds other unsupported commands, ASDM operation is unaffected. To view the unsupported commands, choose **Tools > Show Commands Ignored by ASDM on Device**.

## Discontinuous Subnet Masks Not Supported

ASDM does not support discontinuous subnet masks such as 255.255.0.255. For example, you cannot use the following:

```
ip address inside 192.168.2.1 255.255.0.255
```

## Interactive User Commands Not Supported by the ASDM CLI Tool

The ASDM CLI tool does not support interactive user commands. If you enter a CLI command that requires interactive confirmation, ASDM prompts you to enter “[yes/no]” but does not recognize your input. ASDM then times out waiting for your response.

For example:

1. Choose **Tools > Command Line Interface**.
2. Enter the **crypto key generate rsa** command.  
ASDM generates the default 1024-bit RSA key.
3. Enter the **crypto key generate rsa** command again.

Instead of regenerating the RSA keys by overwriting the previous one, ASDM displays the following error:

```
Do you really want to replace them? [yes/no]:WARNING: You already have RSA
ke00000000000000$A key
Input line must be less than 16 characters in length.

%Please answer 'yes' or 'no'.
Do you really want to replace them [yes/no]:

%ERROR: Timed out waiting for a response.
ERROR: Failed to create new RSA keys names <Default-RSA-key>
```

*Workaround:*

- You can configure most commands that require user interaction by means of the ASDM panes.
- For CLI commands that have a **noconfirm** option, use this option when entering the CLI command.  
For example:

```
crypto key generate rsa noconfirm
```