



# Configure a Center DPI

- [Configure a Center DPI, on page 1](#)

## Configure a Center DPI

This section describes how to configure a Center DPI, that is, a virtual sensor in the Center.

### Requirements:

Make sure an ethernet interface is available for the Center DPI traffic, depending on:

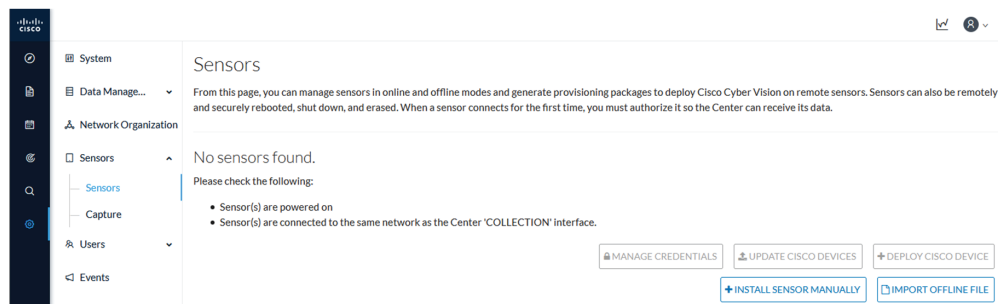
- If the server has a dual interface, that is, the Administration interface is on eth0 and the Collection interface is on eth1, then eth2 will be used for the Center DPI.
- If the server has a single interface, that is, the Administration and Collection interfaces are on the same interface, then eth1 will be used for the Center DPI.

In the example below, the server has a single interface.

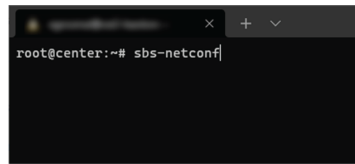
To configure a Center DPI:

### Procedure

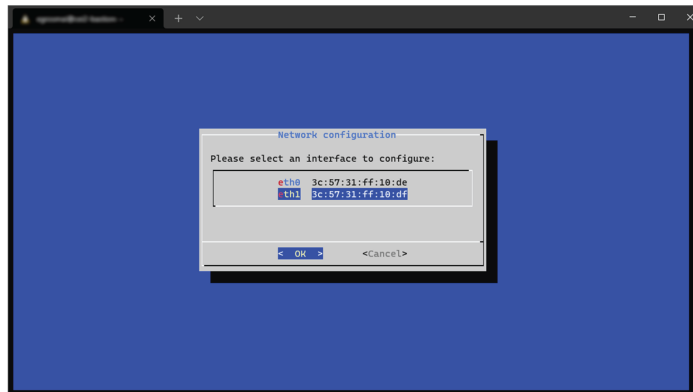
**Step 1** Access the Cisco Cyber Vision sensors administration page.



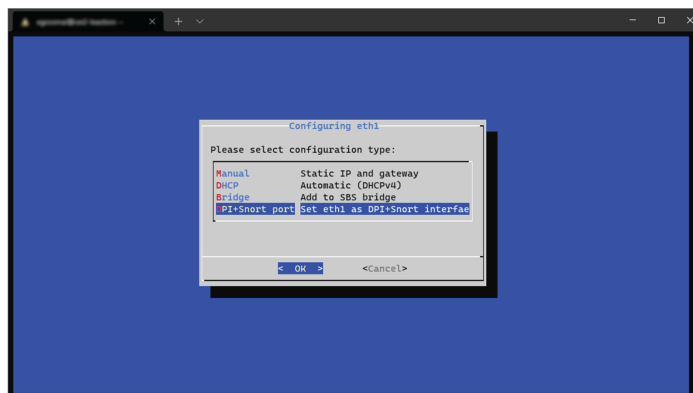
**Step 2** Open the Center shell prompt and type the following command:  
`sbs-netconf`



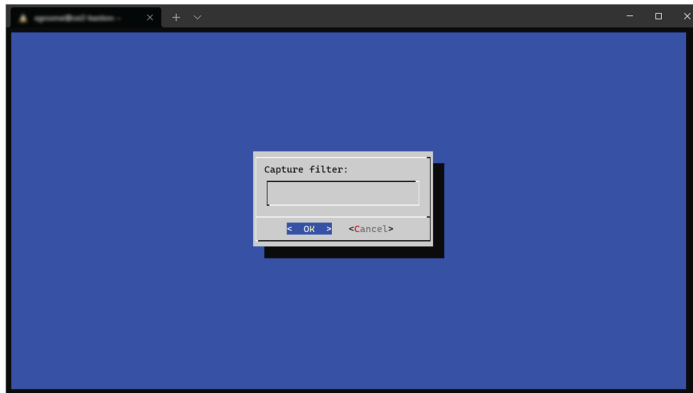
- Step 3** In the case of a single interface, select the eth1 interface.  
In the case if a dual interface, select eth2.



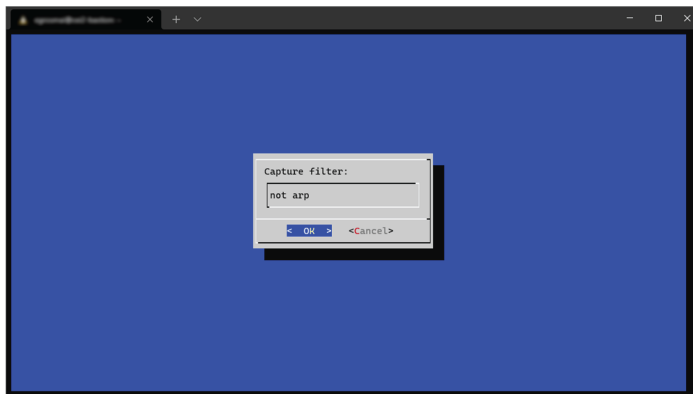
- Step 4** Select the interface as DPI+Snort port.



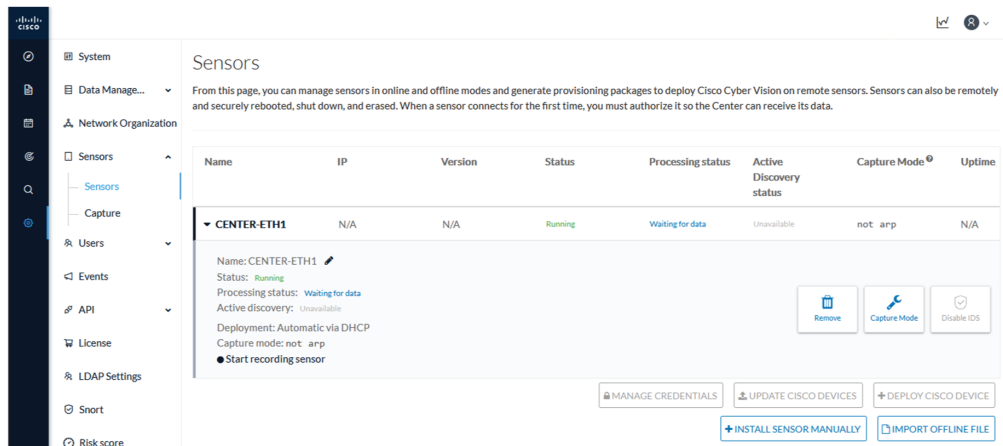
- Step 5** Configure a capture filter mode. You can do that later in the Cisco Cyber Vision sensor page clicking the Capture mode button.  
For more information on how to configure a capture mode filter, refer to the Cisco Cyber Vision GUI user guide.



For example, you can type "not arp".



In the Cisco Cyber Vision administration sensor page, the new virtual sensor appears and is ready to receive data.



The screenshot shows the Cisco Cyber Vision administration interface. The left sidebar contains navigation options: System, Data Management, Network Organization, Sensors, Capture, Users, Events, API, License, LDAP Settings, Snort, and Risk score. The main content area is titled 'Sensors' and includes a descriptive paragraph and a table of sensors.

Name	IP	Version	Status	Processing status	Active Discovery status	Capture Mode <sup>®</sup>	Uptime
▼ CENTER-ETH1	N/A	N/A	Running	Waiting for data	Unavailable	not arp	N/A

Below the table, the details for the selected sensor 'CENTER-ETH1' are shown:

- Name: CENTER-ETH1
- Status: Running
- Processing status: Waiting for data
- Active discovery: Unavailable
- Deployment: Automatic via DHCP
- Capture mode: not arp
- Start recording sensor

At the bottom of the sensor details, there are three buttons: Remove, Capture Mode, and Disable IDS. Below these are four buttons: Manage Credentials, Update Cisco Devices, Deploy Cisco Device, and Install Sensor Manually. An Import Offline File button is also present.

