



## Activity

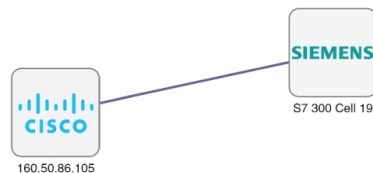
---

- [Activity, on page 1](#)

## Activity

An activity is the representation of the communications exchanged between [devices](#) or [components](#). It is recognizable on the map by a line (or an arrow if the source and destination components are known) which links one component to another.

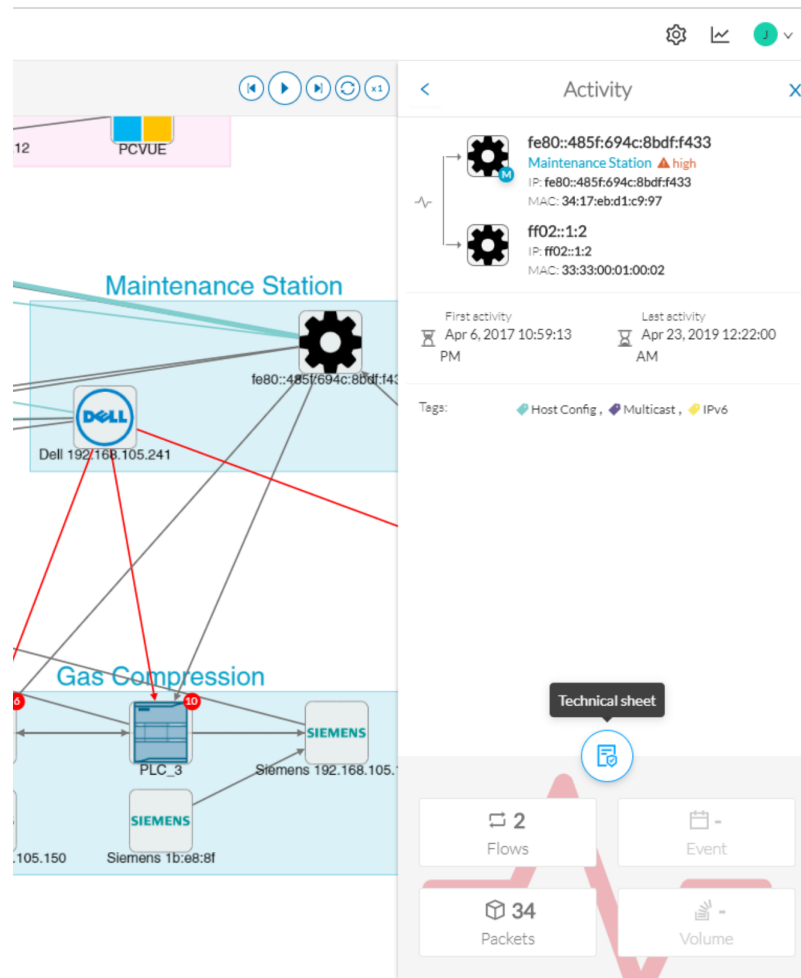
To access the map: Click **Explore > Control Systems Management > OT Activities >** > click a component on the map. The map appears.



An activity between two components is actually a simplified view of the [flows](#) exchanged. You can have many types of flows going in both directions inside an activity, represented in the map.

When you click on an activity in the map, a right side panel opens, containing:

- The date of the first and last communication between the two components.
- Details about the components (name, IP, MAC and, if applicable, the group they are part of, and their criticality).
- The tags on the flows.
- The number of flows.
- The number of packets.
- The volume of data exchanged.
- The number of events.
- A button to access the [technical sheet](#) that shows more details about tags and flows.



Devices or components with no activity does not mean that they did not have any interaction. In fact, a component can only be detected if it has been involved in a network activity (communication emission/reception). Lack of activity can mean that the other linked component is not part of the preset selected and so doesn't display.

### Aggregated activities or conduits

When devices and components are placed inside groups, activities are aggregated to enhance visibility. Aggregated activities are called **conduits**.

Use the **Show network activities** button at the lower left side of the map to turn on/off the simplified view of the activities between groups. This feature is turned on by default.

