



Events

Cisco Cyber Vision provides many [events](#) significant to network security, especially the events which relate to the industrial activity (such as New program downloaded/uploaded, New start/stop CPU command, New init command, etc.). Many other events related to [vulnerabilities](#), comparison results, sensors activity, etc. are also available.

Go to **Admin > Events** to see all available **Events**. See the Cisco Cyber Vision *Administration Guide*.

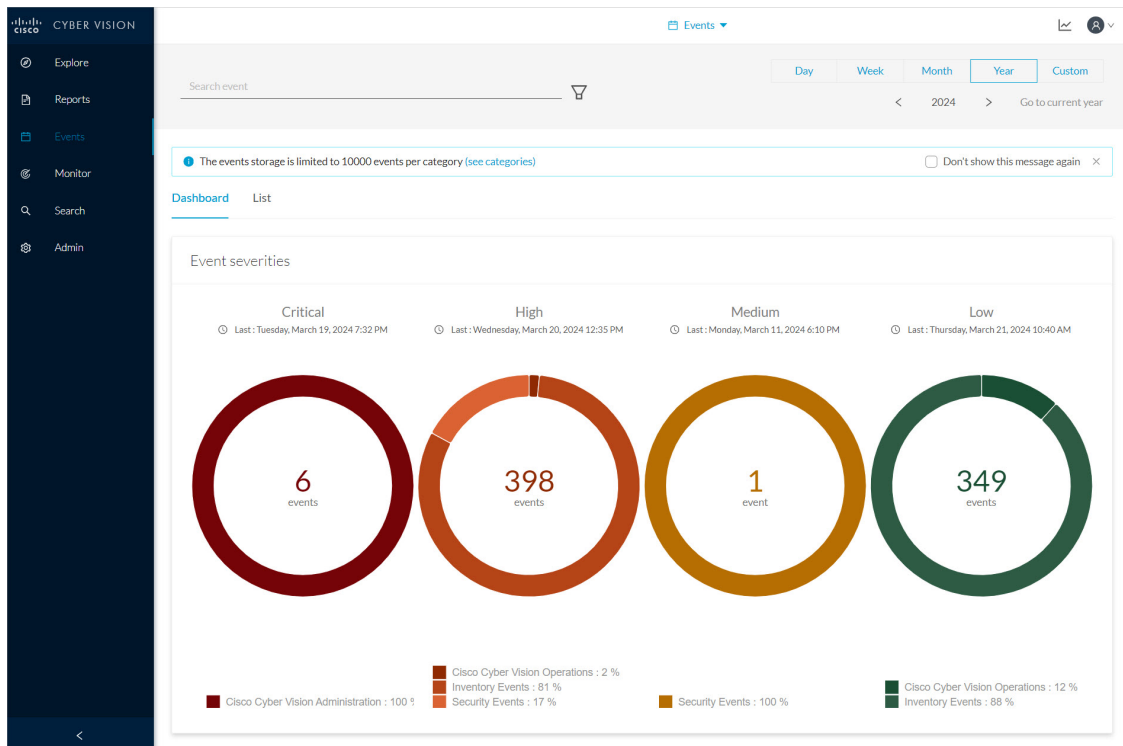
The **Events** interface provides high visibility on events with the following two views:

- [The Dashboard](#): Shows a visual and continuously-updated view of the current state of the installation, based on the number of events (by severity and over time).
- [The List](#): Shows a chronological and continuously-updated view of the events within which you can search events.
- [The Dashboard, on page 1](#)
- [The List, on page 3](#)

The Dashboard

The **Dashboard** shows Event doughnut and line charts. Doughnut charts show color-coded, event severity categories and percentages. You can filter the Events on **Day, Week, Month** or **Year**. Use the arrows for exact dates.

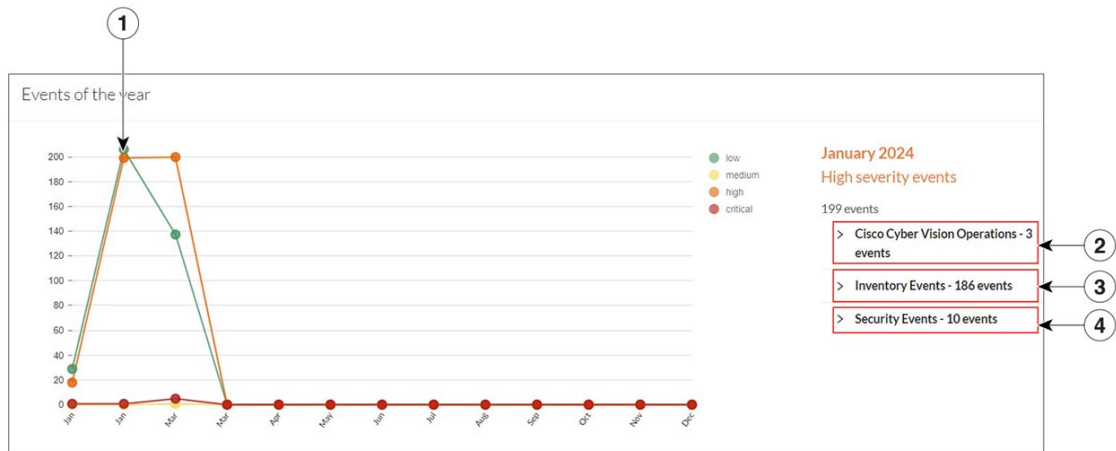
Doughnut charts present events numbers and percentages per categories and severities.



Click a doughnut. The screen toggles to a detailed [The List](#) view list filtered with the corresponding category and severity so you can quickly access more events details.

To see the list of Events per categories, click **Admin > Events**. See the Cisco Cyber Vision *Administration Guide*.

The line chart shows the number of events per severity over time. Click the event marker **circle** to see the number of events per category at a specific time.



Click event markers (1) on the line to see the number of events per category according to a specific date. Click tab (2) for **Cisco Cyber Vision Operations** events details, tab (3) for **Inventory Events** details and tab (4) for **Security Events** details.

The List

List is a chronological view in which you can see and search events. Use the search bar to find events by MAC and IP addresses, component name, destination and source flow, severity and category. You can search the Events on **Day, Week, Month or Year**. Use the arrows for exact dates.

The screenshot shows the Cisco Cyber Vision interface. On the left is a navigation menu with options like Explore, Reports, Events, Monitor, Search, and Admin. The main area displays the 'Events List' for the year 2024. A search bar contains 'category: Cisco Cyber Vision Administration'. A notification indicates that event storage is limited to 10,000 events per category. A table lists 7 events, all with a 'critical' severity. The first event is selected, and its details are expanded below the table.

Time	Severity	Category	Description
March 21, 2024 7:58:06 PM	critical	Cisco Cyber Vision Administration	The sensor FOC2351V0XG with version 4.4.0+202403062333 has been disconnected
March 19, 2024 7:32:35 PM	critical	Cisco Cyber Vision Administration	The sensor FOC2351V0XG with version 4.4.0+202403062333 has been disconnected
March 11, 2024 6:22:25 PM	critical	Cisco Cyber Vision Administration	The sensor FOC2351V0XG with version 4.3.1+202402010947 has been updated to version 4.4.0+202403062333
March 7, 2024 9:21:19 PM	critical	Cisco Cyber Vision Administration	The sensor FOC2351V0XG with version 4.3.1+202402010947 has been disconnected
March 7, 2024 8:42:23 PM	critical	Cisco Cyber Vision Administration	The sensor FOC2351V0XG with version 4.3.1+202402010947 has been disconnected
February 16, 2024 3:55:00 PM	critical	Cisco Cyber Vision Administration	The sensor FOC2351V0XG with version 4.3.0+202311161554 has been updated to version 4.3.1+202402010947
January 9, 2024 10:30:20 PM	critical	Cisco Cyber Vision Administration	The sensor FOC2351V0XG with version 4.3.0+202311031426 has been updated to version 4.3.0+202311161554

Click an event result for more details about the event.



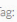
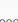
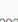
When an event is related to sensors, click **See Sensor Statistics** for more details.

This screenshot shows the expanded details for the first event. It includes a 'Sensor FOC2351V0XG' section with the following information: Serial number: FOC2351V0XG, IP: 192.168.49.65, and Capture mode: All. A red box highlights the 'See Sensor Statistics' link.

When an event is related to component or an activity, click **see Technical Sheet** for more details.

336 Events [Collapse all](#)

< 1 2 3 4 5 ... 17 > 20 / page v

	Time	Severity	Category	Description
-	March 22, 2024 7:29:37 PM	high	Inventory Events	New component detected on the network:  ba:d5:e2:fe:da:cd (@ fe80:b8d5:e2ff:fe:fe:dacd) MAC: ba:d5:e2:fe:da:cd
<div style="display: flex; align-items: flex-start;"><div style="margin-right: 10px;"> ba:d5:e2:fe:da:cd See Technical sheet</div><div><p>Properties</p><p>Device: @ fe80:b8d5:e2ff:fe:fe:dacd Name: ba:d5:e2:fe:da:cd MAC: ba:d5:e2:fe:da:cd Tag:  Locally Administered MAC</p></div></div>				
+	March 22, 2024 7:29:37 PM	high	Inventory Events	New component detected on the network:  fe80:b8d5:e2ff:fe:fe:dacd (@ fe80:b8d5:e2ff:fe:fe:dacd) IP: fe80:b8d5:e2ff:fe:fe:dacd MAC: ba:d5:e2:fe:da:cd
+	March 22, 2024 7:19:36 PM	high	Inventory Events	New component detected on the network:  fe80:4c8c:b4ff:feb4:9b2c (@ fe80:4c8c:b4ff:feb4:9b2c) IP: fe80:4c8c:b4ff:feb4:9b2c MAC: 4e:8c:b4:b4:9b:2c