



Configuring Cloud Orchestrator Mode

- [About the Cloud Orchestrator Mode, on page 1](#)
- [Cloud Orchestrator Mode Schema, on page 1](#)
- [Configuring the Cloud Orchestrator Mode Using the GUI, on page 8](#)
- [Configuring a Firewall Using the REST API, on page 9](#)
- [Configuring a Load Balancer Using the REST API, on page 10](#)

About the Cloud Orchestrator Mode

In environments where the Cisco APIC works with a cloud Orchestrator, such as Azure, vRealize, OpenStack, or CliQR, the cloud Orchestrator must typically be aware of the semantics of the vendor's configuration parameters. With the cloud orchestrator mode, however, the Cisco APIC provides an LB-aas and a FW-aas interface to enable a standard set of parameters that creates a unified interface for configuring load balancers and firewalls in a service graph. The cloud orchestrator mode can also work with the unified interface to provision load balancers and firewalls in the Cisco ACI fabric. As a result, the Orchestrator does not need to be aware of the semantics of the vendor's configuration parameters.

Cloud Orchestrator Mode Schema

Firewall Schema

The cloud orchestrator mode schema is published as a device package (CISCO CloudMode device package) that is automatically created in the Cisco APIC.

Figure 1: Firewall Interface

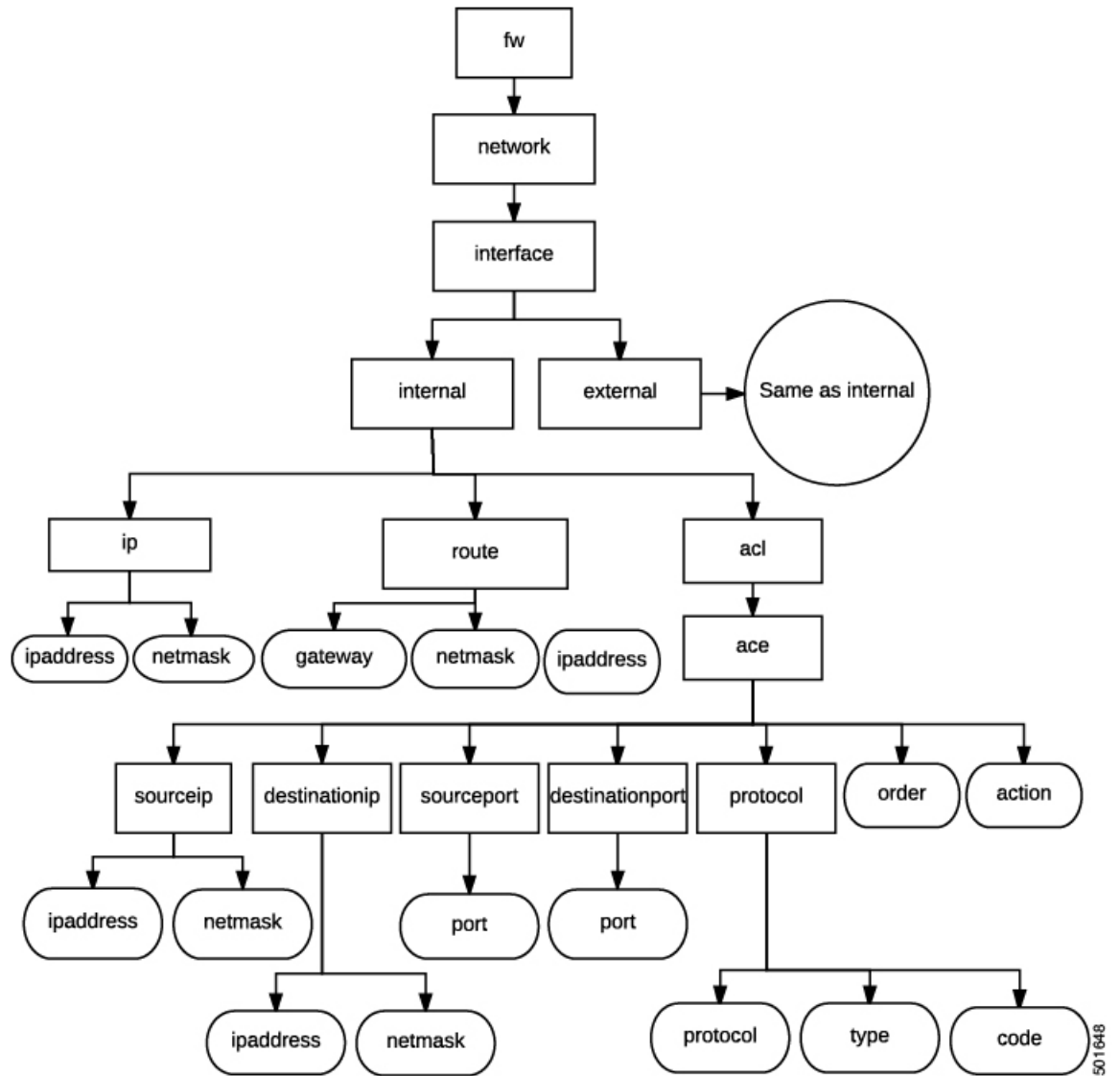
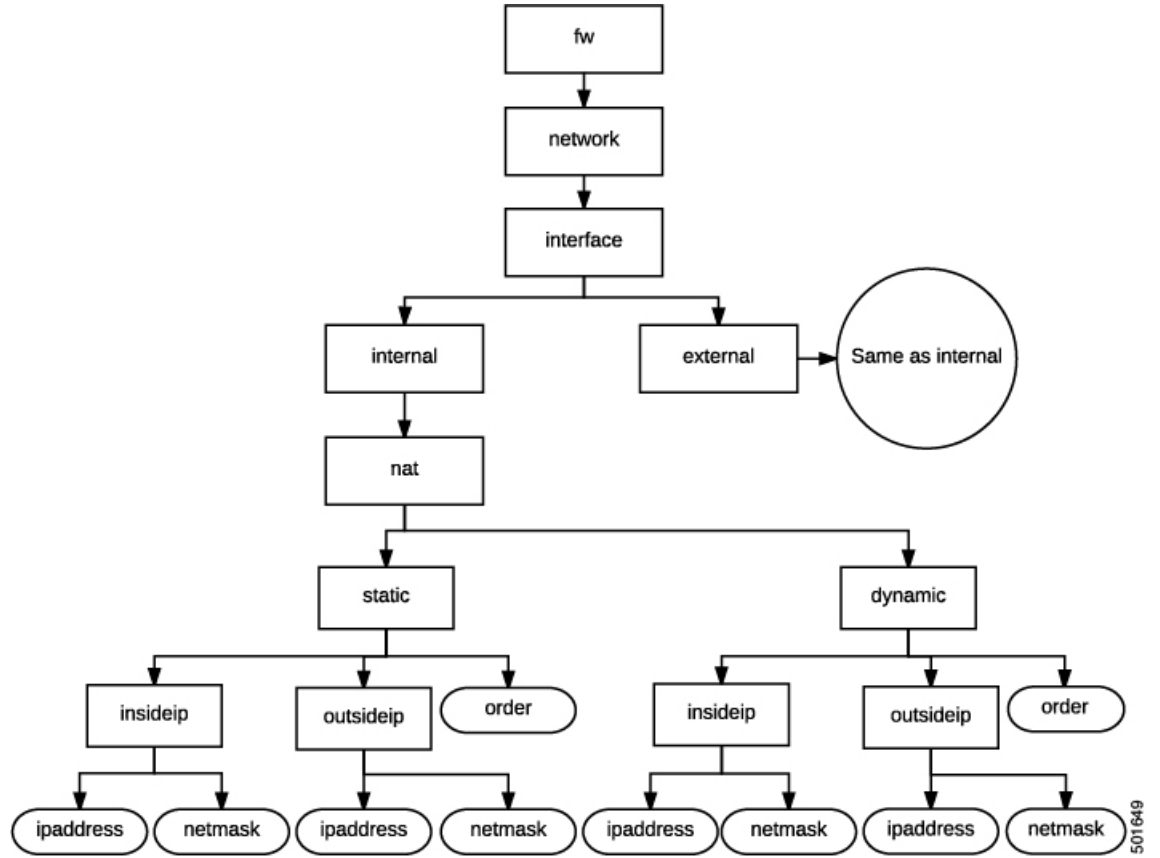


Figure 2: Firewall NAT



501649

Figure 3: Firewall PAT

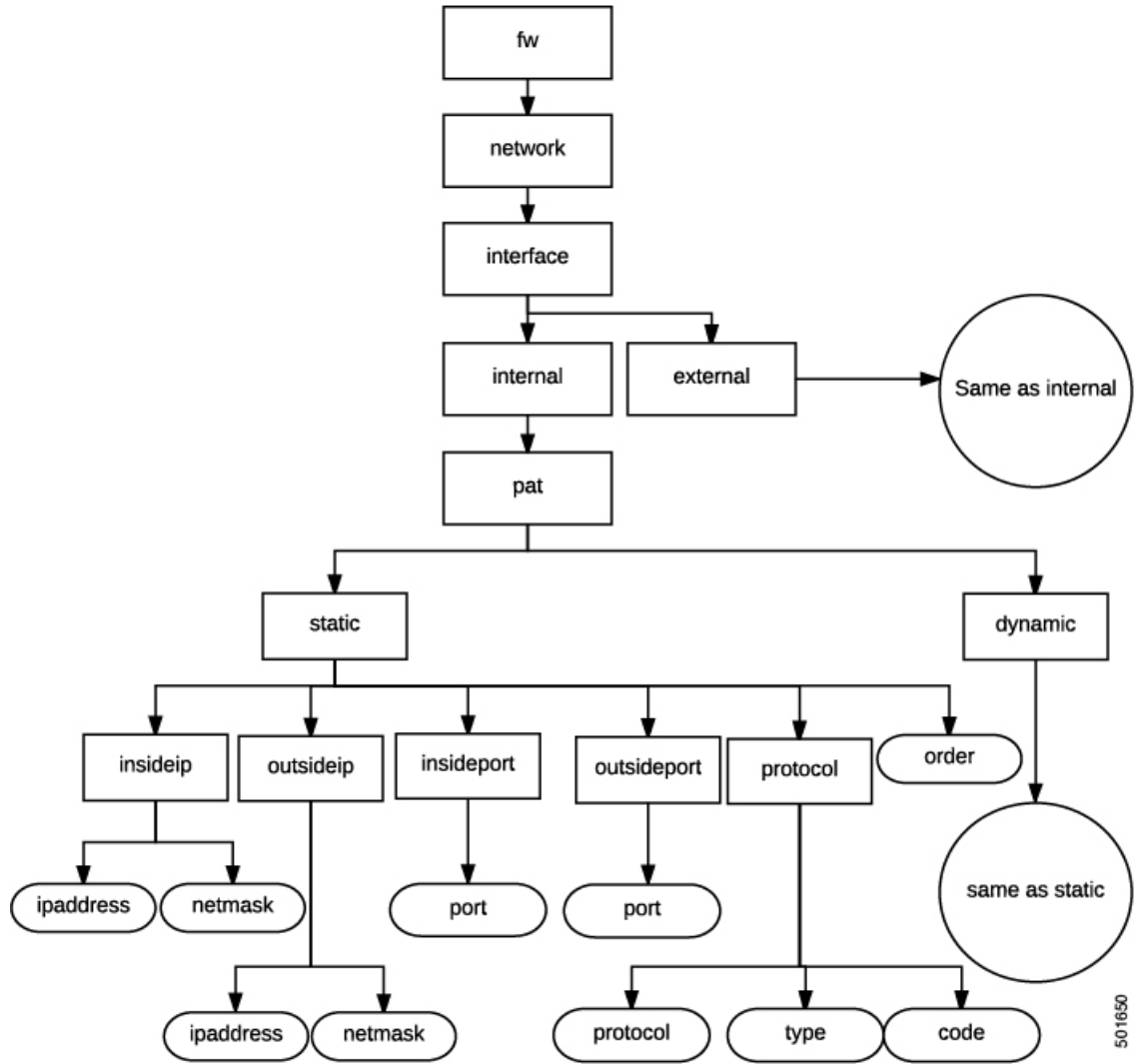
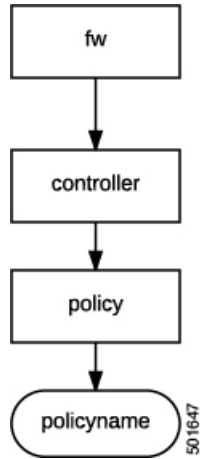


Figure 4: Firewall Controller



Load Balancer Schema

The cloud orchestrator mode schema is published as a device package (CISCO CloudMode device package) that is automatically created in the Cisco APIC.

Figure 5: Load Balancer Interface

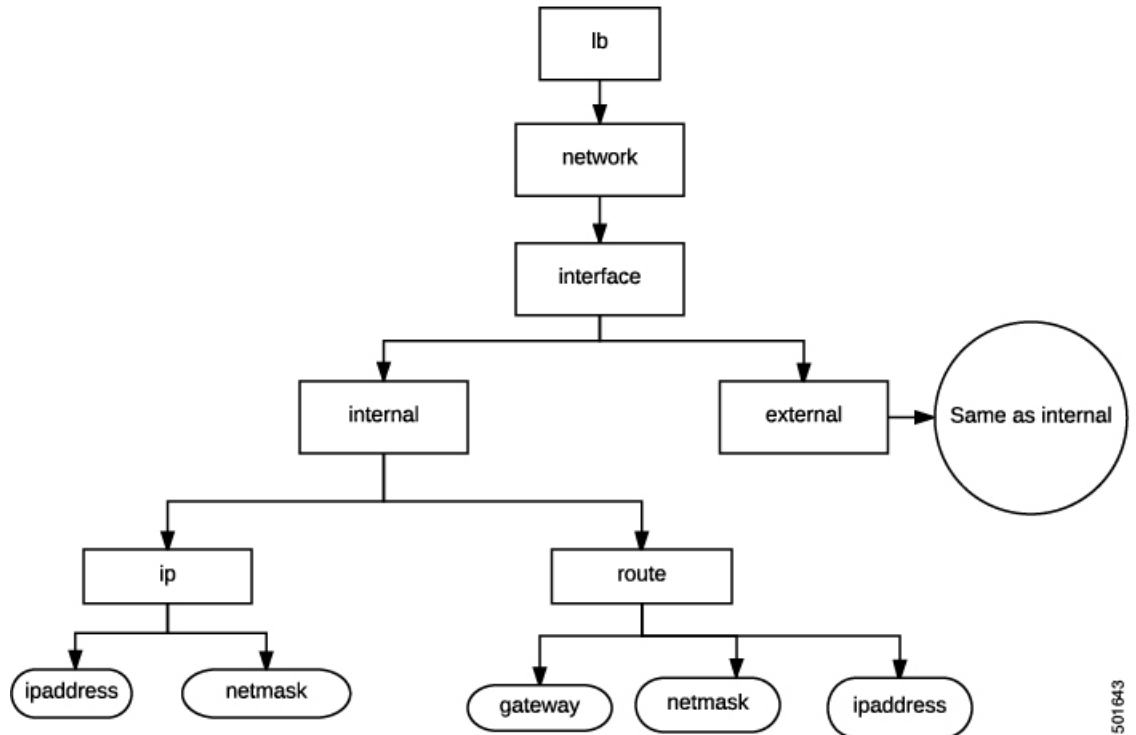


Figure 6: Load Balancer NAT

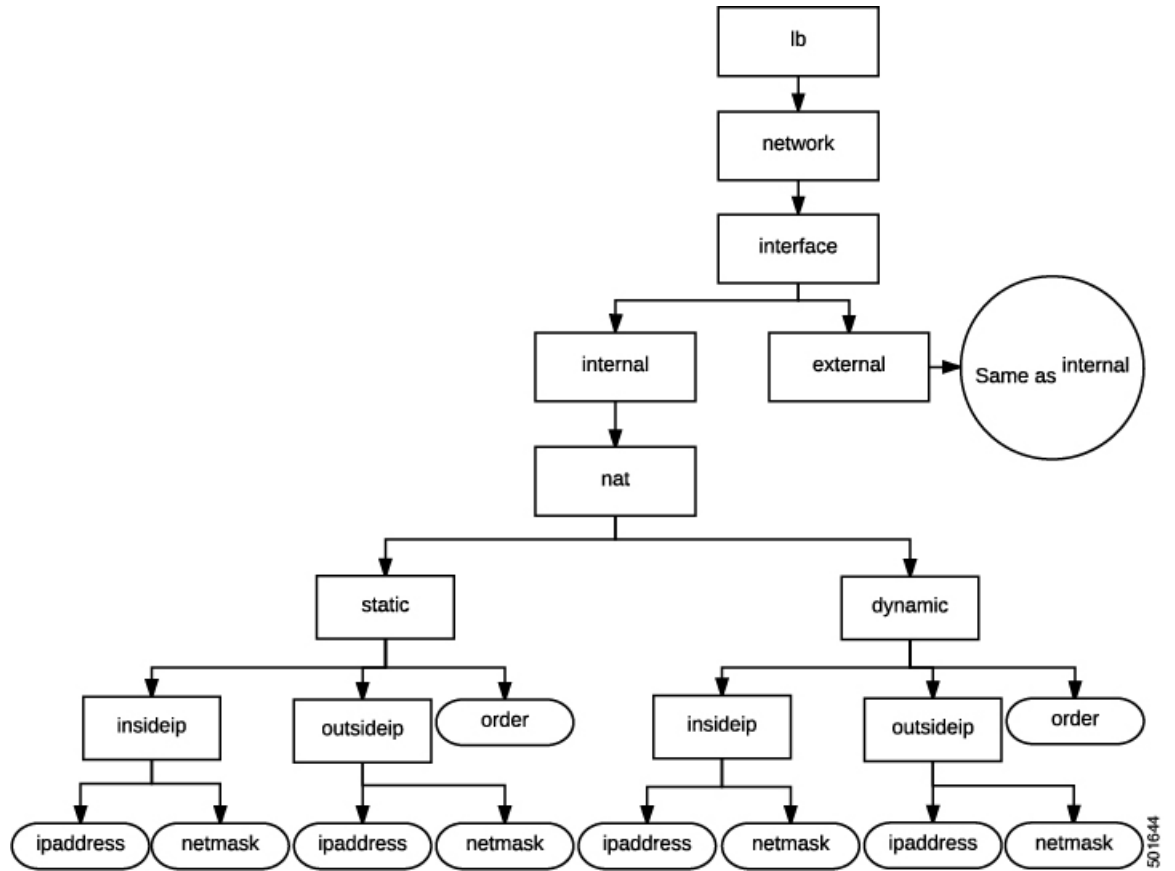
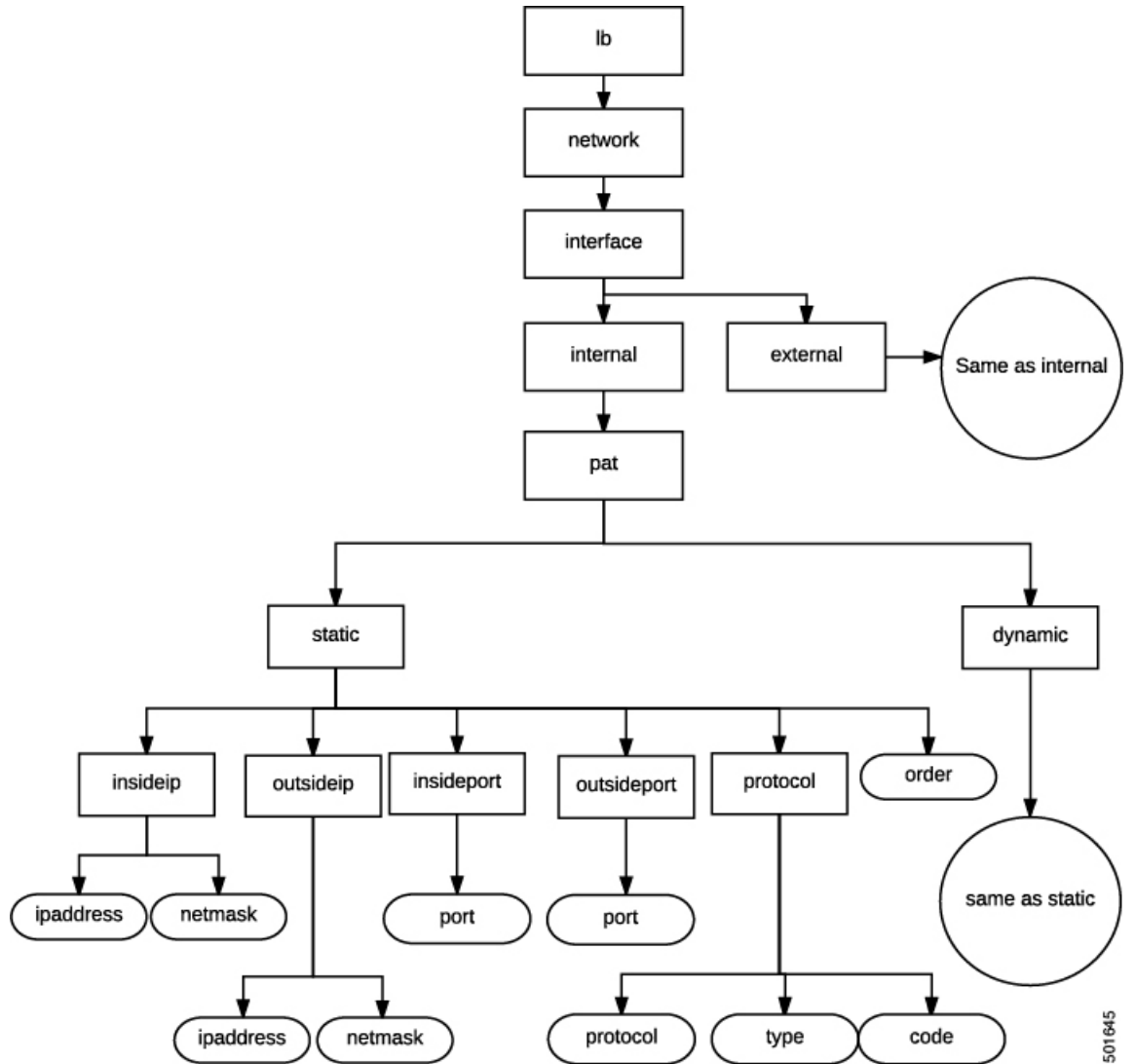


Figure 7: Load Balancer PAT



501645

Figure 8: Load Balancer Controller

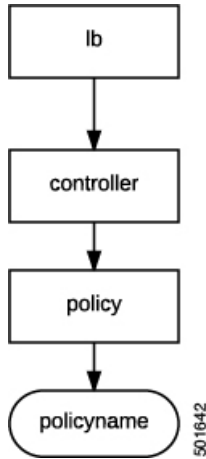
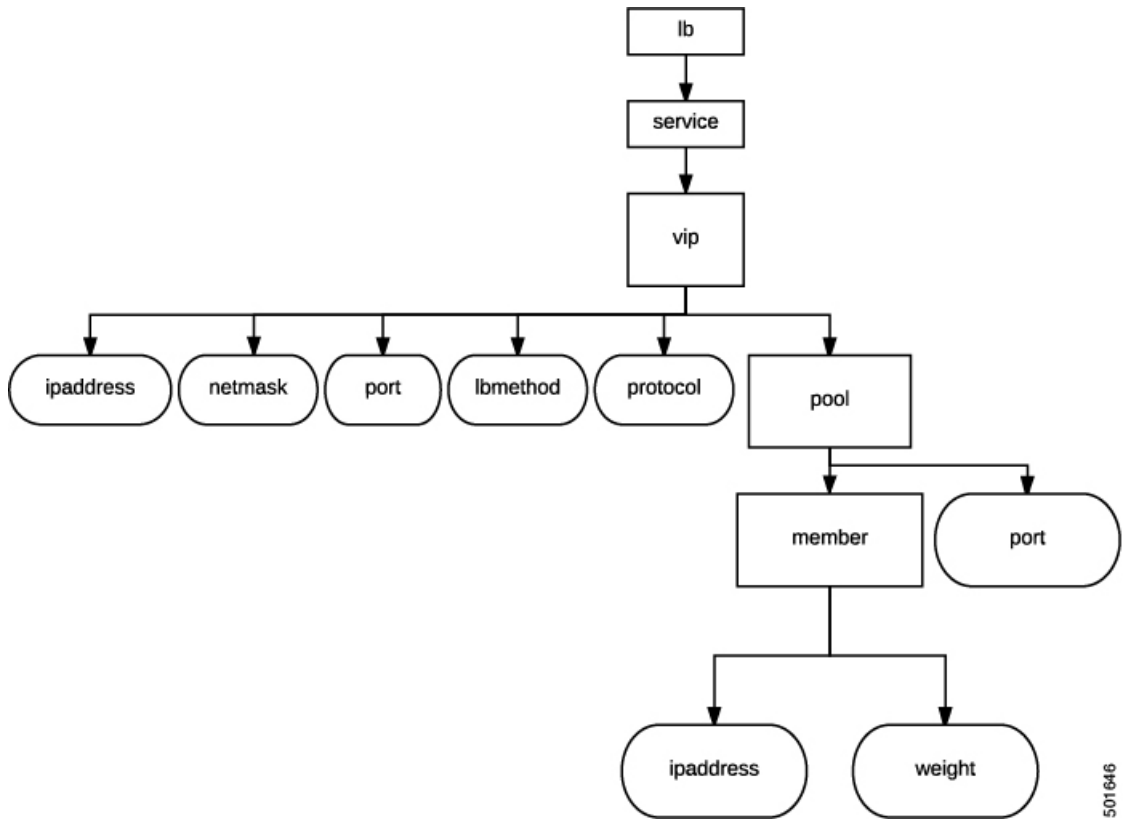


Figure 9: Load Balancer Service



Configuring the Cloud Orchestrator Mode Using the GUI

The cloud orchestrator mode is configured in the GUI when performing the following actions:

- **Creating a Function Profile**—When creating a Layer 4 to Layer 7 function profile, the option to use the cloud orchestrator mode appears when choosing an existing profile. The **Profile** property appears as a drop-down menu that lists the supported function profiles. The cloud orchestrator mode profiles are identified in the profile name.



Note Device packages from vendors using cloud orchestrator mode will have pre-created copies of function profiles in cloud mode for all of their existing function profiles.

For information about creating a function profile, see [Creating a Function Profile Using the GUI](#).

- **Creating a Layer 4 to Layer 7 Service Graph Template**—When creating a Layer 4 to Layer 7 service graph template, the option to use the cloud orchestrator mode appears when creating a service node. The **Profile** property appears as a drop-down menu that lists the supported profiles. The cloud orchestrator mode profiles are identified in the profile name.

For information about creating a service node when creating a Layer 4 to Layer 7 Service Graph Template, see [Configuring a Service Graph Template Using the GUI](#).

- **Applying a Service Graph Template to Endpoint Groups**—The cloud orchestrator mode interface for the chosen profile appears when applying a service graph template to EPGs with a cloud orchestrator mode profile.

For more information about applying a service graph template to EPGs, see [Applying a Service Graph Template to Endpoint Groups Using the GUI](#).

Configuring a Firewall Using the REST API

The following REST API configures a firewall:

```
<fvTenant name="Tenant1">
  <fvAp name="ap1">
    <fvAEPg name="epg3">
      <vnsSvcPol ctrct="ctrct_fw" graph="Graph_FW" node="FW">
        <vnsFolderInst ctrctNameOrLbl="ctrct_fw" graphNameOrLbl="Graph_FW" nodeNameOrLbl="FW"
key="fw" name="fw">
          <vnsRsFolderInstToMFolder tDn="uni/infra/mDev-CISCO-CloudMode-1.0/mFunc-FW/mFolder-fw"/>

          <vnsFolderInst ctrctNameOrLbl="ctrct_fw" graphNameOrLbl="Graph_FW" nodeNameOrLbl="FW"
key="network" name="network">
            <vnsFolderInst ctrctNameOrLbl="ctrct_fw" graphNameOrLbl="Graph_FW" nodeNameOrLbl="FW"
key="interface" name="interface">
              <vnsFolderInst ctrctNameOrLbl="ctrct_fw" graphNameOrLbl="Graph_FW" nodeNameOrLbl="FW"
key="internal" name="internal">
                <vnsFolderInst ctrctNameOrLbl="ctrct_fw" graphNameOrLbl="Graph_FW" nodeNameOrLbl="FW"
key="ip" name="ip">
                  <vnsParamInst name="ipaddress" key="ipaddress" value="2.2.2.2"/>
                  <vnsParamInst name="netmask" key="netmask" value="255.255.255.0"/>
                </vnsFolderInst>
              </vnsFolderInst>
            <vnsFolderInst ctrctNameOrLbl="ctrct_fw" graphNameOrLbl="Graph_FW" nodeNameOrLbl="FW"
key="external" name="external">
              <vnsFolderInst ctrctNameOrLbl="ctrct_fw" graphNameOrLbl="Graph_FW" nodeNameOrLbl="FW"
key="ip" name="ip">
                <vnsParamInst name="ipaddress" key="ipaddress" value="1.1.1.1"/>
                <vnsParamInst name="netmask" key="netmask" value="255.255.255.0"/>
              </vnsFolderInst>
            </vnsFolderInst>
          </vnsFolderInst>
        </vnsSvcPol>
      </fvAEPg>
    </fvAp>
  </fvTenant>
```

```

        </vnsFolderInst>
        <vnsFolderInst ctrctNameOrLbl="ctrct_fw" graphNameOrLbl="Graph_FW" nodeNameOrLbl="FW"
key="acl" name="acl">
            <vnsFolderInst ctrctNameOrLbl="ctrct_fw" graphNameOrLbl="Graph_FW"
nodeNameOrLbl="FW" key="ace" name="ace">
                <vnsParamInst name="action" key="action" value="PERMIT"/>
                <vnsParamInst name="order" key="order" value="10"/>
                <vnsFolderInst ctrctNameOrLbl="ctrct_fw" graphNameOrLbl="Graph_FW"
nodeNameOrLbl="FW" key="protocol" name="protocol">
                    <vnsParamInst name="protocol" key="protocol" value="TCP"/>
                </vnsFolderInst>
                <vnsFolderInst ctrctNameOrLbl="ctrct_fw" graphNameOrLbl="Graph_FW"
nodeNameOrLbl="FW" key="sourceip" name="sourceip">
                    <vnsParamInst name="ipaddress" key="ipaddress" value="0.0.0.0"/>
                    <vnsParamInst name="netmask" key="netmask" value="0"/>
                </vnsFolderInst>
                <vnsFolderInst ctrctNameOrLbl="ctrct_fw" graphNameOrLbl="Graph_FW"
nodeNameOrLbl="FW" key="destinationip" name="destinationip">
                    <vnsParamInst name="ipaddress" key="ipaddress" value="10.10.10.0"/>
                    <vnsParamInst name="netmask" key="netmask" value="24"/>
                </vnsFolderInst>
                <vnsFolderInst ctrctNameOrLbl="ctrct_fw" graphNameOrLbl="Graph_FW"
nodeNameOrLbl="FW" key="destinationport" name="destinationport">
                    <vnsParamInst name="port" key="port" value="80"/>
                </vnsFolderInst>
            </vnsFolderInst>
        </vnsFolderInst>
    </vnsFolderInst>
</vnsSvcPol>
</fvAEPg>
</fvAp>
</fvTenant>

```

Configuring a Load Balancer Using the REST API

The following REST API configures a load balancer:

```

<fvTenant name="Tenant1">
    <fvAp name="ap1">
        <fvAEPg name="epg2">
            <vnsSvcPol ctrct="ctrct_lb" graph="Graph_ADC" node="ADC">
                <vnsFolderInst ctrctNameOrLbl="ctrct_lb" graphNameOrLbl="Graph_ADC" nodeNameOrLbl="ADC"
key="lb" name="lb">
                    <vnsRsFolderInstToMFolder tDn="uni/infra/mDev-CISCO-CloudMode-1.0/mFunc-LB/mFolder-lb"/>

                    <vnsFolderInst ctrctNameOrLbl="ctrct_lb" graphNameOrLbl="Graph_ADC" nodeNameOrLbl="ADC"
key="network" name="network">
                        <vnsFolderInst ctrctNameOrLbl="ctrct_lb" graphNameOrLbl="Graph_ADC" nodeNameOrLbl="ADC"
key="interface" name="interface">
                            <vnsFolderInst ctrctNameOrLbl="ctrct_lb" graphNameOrLbl="Graph_ADC"
nodeNameOrLbl="ADC" key="internal" name="internal">
                                <vnsFolderInst ctrctNameOrLbl="ctrct_lb" graphNameOrLbl="Graph_ADC"
nodeNameOrLbl="ADC" key="ip" name="ip">
                                    <vnsParamInst name="ipaddress" key="ipaddress" value="2.2.2.2"/>
                                    <vnsParamInst name="netmask" key="netmask" value="255.255.255.0"/>
                                </vnsFolderInst>
                            </vnsFolderInst>
                        <vnsFolderInst ctrctNameOrLbl="ctrct_lb" graphNameOrLbl="Graph_ADC"
nodeNameOrLbl="ADC" key="external" name="external">

```

```
        <vnsFolderInst ctrctNameOrLbl="ctrct_lb" graphNameOrLbl="Graph_ADC"
nodeNameOrLbl="ADC" key="ip" name="ip">
        <vnsParamInst name="ipaddress" key="ipaddress" value="1.1.1.1"/>
        <vnsParamInst name="netmask" key="netmask" value="255.255.255.0"/>
    </vnsFolderInst>
    </vnsFolderInst>
    </vnsFolderInst>
    </vnsFolderInst>
    <vnsFolderInst ctrctNameOrLbl="ctrct_lb" graphNameOrLbl="Graph_ADC" nodeNameOrLbl="ADC"
key="service" name="service">
    <vnsFolderInst ctrctNameOrLbl="ctrct_lb" graphNameOrLbl="Graph_ADC" nodeNameOrLbl="ADC"
key="vip" name="vip1">
        <vnsParamInst name="lbmethod" key="lbmethod" value="LEAST_CONNECTIONS"/>
        <vnsParamInst name="protocol" key="protocol" value="TCP"/>
        <vnsParamInst name="ipaddress" key="ipaddress" value="3.3.3.3"/>
        <vnsParamInst name="port" key="port" value="80"/>
        <vnsFolderInst ctrctNameOrLbl="ctrct_lb" graphNameOrLbl="Graph_ADC"
nodeNameOrLbl="ADC" key="pool" name="pool1">
            <vnsParamInst name="port" key="port" value="80"/>
        </vnsFolderInst>
    </vnsFolderInst>
    </vnsFolderInst>
    </vnsFolderInst>
    </vnsFolderInst>
    </vnsSvcPol>
    </fvAEPg>
    </fvAp>
</fvTenant>
```

