



CHAPTER 1

Overview

This chapter describes the Cisco Nexus Virtual Services Appliance and includes the following sections:

- [Information About Cisco Nexus Virtual Services Appliance, page 1-1](#)
- [Cisco Integrated Management Controller, page 1-1](#)
- [Software Included, page 1-2](#)
- [Flow Chart: Installing and Configuring the Cisco Nexus Virtual Services Appliance, page 1-3](#)
- [Additional References, page 1-6](#)

Information About Cisco Nexus Virtual Services Appliance

The Cisco Nexus Virtual Services Appliance (VSA) product family includes Cisco Nexus 1010 and Cisco Nexus 1010-X. See the *Cisco Nexus Virtual Services Appliance Hardware Installation Guide* for more information.

The Cisco Nexus Virtual Services Appliance product family are networking appliances that can host up to six virtual service blades (VSBs) on Cisco Nexus 1010 and up to 10 VSBs on Cisco Nexus 1010-X.

Cisco Nexus Virtual Services Appliance product family supports VSBs like Cisco Nexus 1000V Virtual Supervisor Module (VSM), Network Analysis Module (NAM), and Virtual Security Gateway (VSG). The Cisco Nexus Virtual Services Appliance provides dedicated hardware for the Cisco Nexus 1000V VSM. VSMs that were hosted on VMware virtual machines can now be hosted on a Cisco Nexus Virtual Services Appliance. This allows you to install and manage the VSM like a standard Cisco switch. The services (VSM, VSG, or NAM) managed by the Cisco Nexus Virtual Services Appliance product family are called virtual service blades (VSBs).

See *Cisco Nexus Virtual Services Appliance Software Configuration Guide, Release 4.2(1)SP1(5.1)* for more information.

Cisco Integrated Management Controller

The Cisco Integrated Management Controller (CIMC) is a software interface included with the Cisco Nexus Virtual Services Appliance. CIMC allows you to configure serial over LAN (SoL) access and set up remote management in the event the device becomes unreachable. For more information about remote management, see the *Cisco Nexus Virtual Services Appliance Software Configuration Guide, Release 4.2(1)SP1(5.1)*.

[Send document comments to nexus1k-docfeedback@cisco.com.](mailto:nexus1k-docfeedback@cisco.com)

When installing the Cisco Nexus Virtual Services Appliance, you have the option to configure the CIMC interface. To configure the CIMC software while installing the Cisco Nexus Virtual Services Appliance, see the *Cisco Nexus Virtual Services Appliance Hardware Installation Guide*.

Supported PIDs for Cisco Nexus Virtual Services Appliance Product Family

This release supports the following hardware PIDs for the Cisco Nexus Virtual Services Appliance product family.

Cisco Nexus Virtual Services Appliance	Hardware PIDS
Cisco Nexus 1010	N1K-C1010
Cisco Nexus 1010-X	N1K-C1010-X

Software Included

The Cisco Nexus Virtual Services Appliance product family is shipped with the following software.

Software	Description	ISO filename in bootflash repository
Cisco Nexus 1010 or Cisco Nexus 1010-X ISO image	Image for the Cisco Nexus 1010 or Cisco Nexus 1010-X Manager virtual machine which manages the shelf and redundancy group configuration.	nexus-1010.4.2.1.SP1.5.1.iso ¹
Cisco Nexus 1000V VSM	Used to create a VSB for the Cisco Nexus 1000V VSM on the Cisco Nexus Virtual Services Appliance product family	nexus-1000v.4.2.1.SV1.5.1.iso ²
Cisco NAM VSB	Used to create a VSB for Cisco NAM on the Cisco Nexus Virtual Services Appliance product family	nam-app-x86_64.5-1-2.iso ²
Cisco VSG VSB	Used to create a VSB for Cisco VSG on the Cisco Nexus Virtual Services Appliance product family.	nexus-1000v.VSG1.3.1.iso
Cisco Integrated Management Controller (CIMC)	A software interface that allows you to manage the Cisco Nexus Virtual Services Appliance should it become unreachable.	N/A

1. In the event of disk corruption on the Cisco Nexus Virtual Services Appliance, the system can be brought up by copying the ISO image from a CD.
2. If it is necessary to update a VSB ISO file in bootflash, use the scp command to copy the new file version into the repository folder.

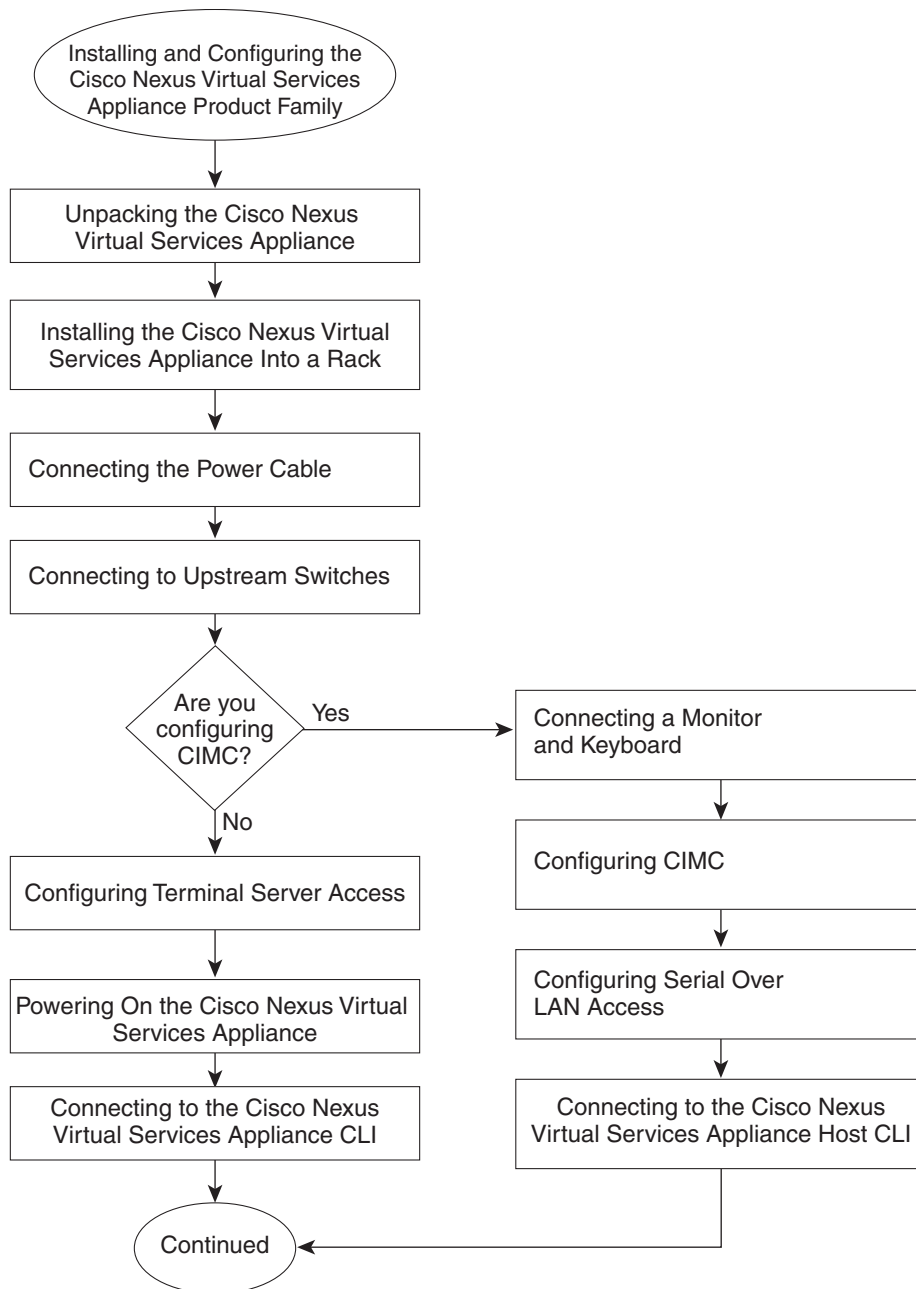
Send document comments to nexus1k-docfeedback@cisco.com.

Flow Chart: Installing and Configuring the Cisco Nexus Virtual Services Appliance

[Figure 1-1](#) and [Figure 1-2](#) show the basic steps for installing and configuring a Cisco Nexus Virtual Services Appliance. To install the Cisco Nexus Virtual Services Appliance hardware see the *Cisco Nexus Virtual Services Appliance Hardware Installation Guide*. To configure the Cisco Nexus Virtual Services Appliance product family see the *Cisco Nexus Virtual Services Appliance Software Configuration Guide, Release 4.2(1)SP1(5.1)*.

Send document comments to nexus1k-docfeedback@cisco.com.

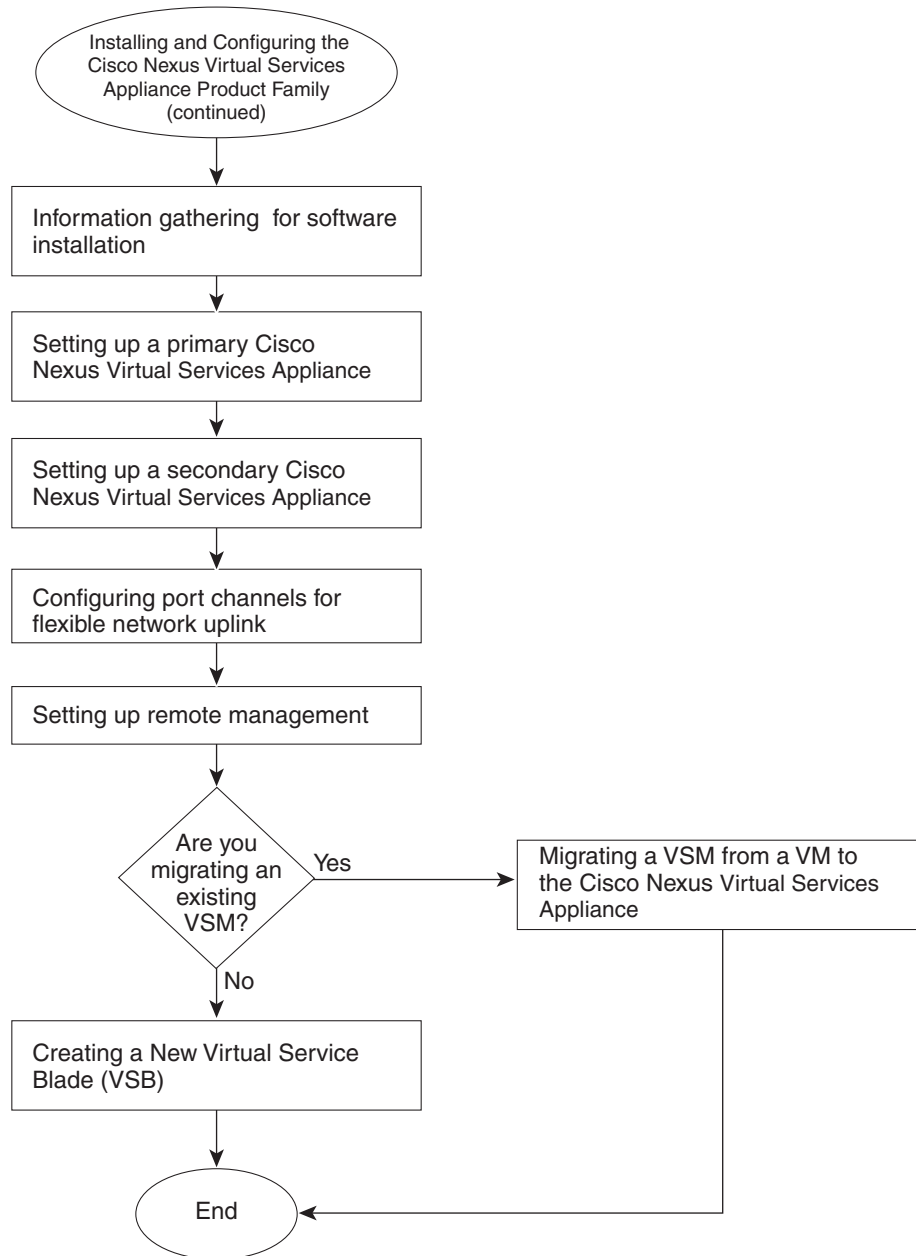
Figure 1-1 Flow Chart: Installing and Configuring the Cisco Nexus Virtual Services Appliance



282579

Send document comments to nexus1k-docfeedback@cisco.com.

Figure 1-2 ***Flow Chart: Installing and Configuring the Cisco Nexus Virtual Services Appliance (continued)***



282580

[Send document comments to nexus1k-docfeedback@cisco.com.](mailto:nexus1k-docfeedback@cisco.com)

Additional References

Related Topic	Document Title
Hardware installation	<i>Cisco Nexus Virtual Services Appliance Hardware Installation Guide</i>
Cisco Nexus Virtual Services Appliance software configuration	<i>Cisco Nexus Virtual Services Appliance Software Configuration Guide, Release 4.2(1)SP1(5.1)</i>
Cisco Nexus Virtual Services Appliance commands	<i>Cisco Nexus Virtual Services Appliance Command Reference, Release 4.2(1)SP1(5.1)</i>
CIMC management	<i>CIMC Firmware Management on UCS C-Series Servers</i>
Deployment	<i>Cisco Nexus Virtual Services Appliance Deployment Guide</i>