



Configuring Ethernet-over-MPLS (EoMPLS)

- [Finding Feature Information, on page 1](#)
- [Configuring EoMPLS, on page 1](#)

Finding Feature Information

Your software release may not support all the features documented in this module. For the latest caveats and feature information, see Bug Search Tool and the release notes for your platform and software release. To find information about the features documented in this module, and to see a list of the releases in which each feature is supported, see the feature information table at the end of this module.

Use Cisco Feature Navigator to find information about platform support and Cisco software image support. To access Cisco Feature Navigator, go to <https://cfng.cisco.com/>. An account on Cisco.com is not required.

Configuring EoMPLS

Information About EoMPLS

EoMPLS is one of the AToM transport types. EoMPLS works by encapsulating Ethernet PDUs in MPLS packets and forwarding them across the MPLS network. Each PDU is transported as a single packet.

Only the following mode is supported:

- Port mode—Allows all traffic on a port to share a single VC across an MPLS network. Port mode uses VC type 5.

For scale information related to this feature, see [Cisco Catalyst 9400 Series Switch Data Sheet](#).

Prerequisites for EoMPLS

Before you configure EoMPLS, ensure that the network is configured as follows:

- Configure IP routing in the core so that the PE routers can reach each other through IP.
- Configure MPLS in the core so that a label switched path (LSP) exists between the PE routers.

- Configure **no switchport**, **no keepalive** and **no ip address** before configuring xconnect on the attachment circuit.
- For load-balancing, **port-channel load-balance** command is mandatory to be configured.

Restrictions for EoMPLS

- VLAN mode is not supported. Ethernet Flow Point is not supported.
- QoS : Customer DSCP Re-marking is not supported with VPWS and EoMPLS.
- VCCV Ping with explicit null is not supported.
- L2 VPN Interworking is not supported.
- L2 Protocol Tunneling CLI is not supported.
- Untagged, tagged and 802.1Q in 802.1Q are supported as incoming traffic.



Note Flow Load balance for 802.1Q in 802.1Q over EoMPLS is not supported.

- Flow Aware Transport Pseudowire Redundancy (FAT PW) is supported only in Protocol-CLI mode. Supported load balancing parameters are Source IP, Source MAC address, Destination IP and Destination MAC address.
- Enabling or disabling Control word is supported.
- MPLS QoS is supported in Pipe and Uniform Mode. Default mode is Pipe Mode.
- Both – the legacy xconnect and Protocol-CLI (interface pseudowire configuration) modes are supported.
- Xconnect and MACSec cannot be configured on the same interface.
- MACSec should be configured on CE devices and Xconnect should be configured on PE devices.
- A MACSec session should be between CE devices.

By default, EoMPLS PW tunnels all protocols like CDP, STP. EoMPLS PW cannot perform selective protocol tunneling as part of L2 Protocol Tunneling CLI.

Configuring Port-Mode EoMPLS

Port-Mode EoMPLS can be configured in two modes :

- Xconnect Mode
- Protocol CLI Method

Xconnect Mode

To configure port-mode EoMPLS in xconnect mode, perform the following task :

SUMMARY STEPS

1. **enable**
2. **configure terminal**
3. **interface** *interface-id*
4. **no switchport**
5. **no ip address**
6. **no keepalive**
7. **xconnect** *peer-device-id* *vc-id* **encapsulation mpls**
8. **end**

DETAILED STEPS

	Command or Action	Purpose
Step 1	enable Example: Device> enable	Enables privileged EXEC mode. Enter your password if prompted.
Step 2	configure terminal Example: Device# configure terminal	Enters the global configuration mode.
Step 3	interface <i>interface-id</i> Example: Device (config) # interface TenGigabitEthernet1/0/36	Defines the interface to be configured as a trunk, and enters interface configuration mode.
Step 4	no switchport Example: Device (config-if) # no switchport	For physical ports only, enters Layer 3 mode..
Step 5	no ip address Example: Device (config-if) # no ip address	Ensures that there is no IP address assigned to the physical port.
Step 6	no keepalive Example:	Ensures that the device does not send keepalive messages.

	Command or Action	Purpose
	Device(config-if) # no keepalive	
Step 7	xconnect <i>peer-device-id</i> <i>vc-id</i> encapsulation mpls Example: Device(config-if) # xconnect 1.1.1.1 962 encapsulation mpls	Binds the attachment circuit to a pseudowire VC. The syntax for this command is the same as for all other Layer 2 transports.
Step 8	end Example: Device(config) # end	Returns to privileged EXEC mode.

Protocol CLI Method

To configure port-mode EoMPLS in protocol-CLI mode, perform the following task :

SUMMARY STEPS

1. **enable**
2. **configure terminal**
3. **port-channel load-balance *dst-ip***
4. **interface *interface-id***
5. **no switchport**
6. **no ip address**
7. **no keepalive**
8. **exit**
9. **interface pseudowire *number***
10. **encapsulation mpls**
11. **neighbor *peer-device-id* *vc-id***
12. **load-balance flow ip *dst-ip***
13. **load-balance flow-label both**
14. **l2vpn xconnect context *context-name***
15. **member *interface-id***
16. **member pseudowire *number***
17. **end**

DETAILED STEPS

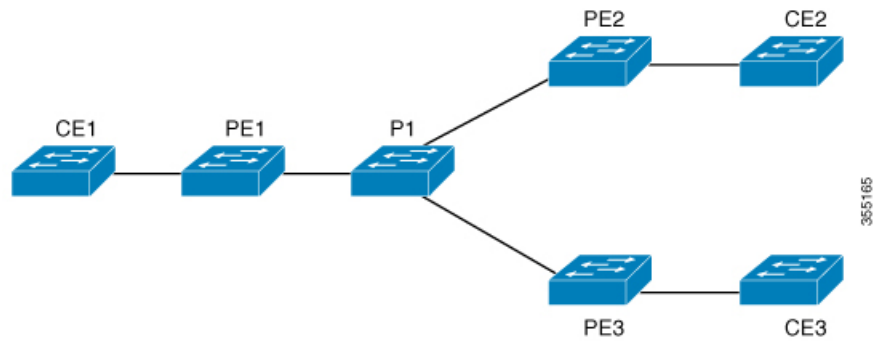
	Command or Action	Purpose
Step 1	enable Example: Device> enable	Enables privileged EXEC mode. Enter your password if prompted.
Step 2	configure terminal Example: Device# configure terminal	Enters the global configuration mode.
Step 3	port-channel load-balance dst-ip Example: Device(config)# port-channel load-balance 192.168.2.25	Sets the load-distribution method to the destination IP address. <ul style="list-style-type: none"> • <i>dst-ip</i>— Destination IP address
Step 4	interface interface-id Example: Device(config)# interface TenGigabitEthernet1/0/21	Defines the interface to be configured as a trunk, and enters interface configuration mode.
Step 5	no switchport Example: Device(config-if)# no switchport	For physical ports only, enters Layer 3 mode..
Step 6	no ip address Example: Device(config-if)# no ip address	Ensures that there is no IP address assigned to the physical port.
Step 7	no keepalive Example: Device(config-if)# no keepalive	Ensures that the device does not send keepalive messages.

	Command or Action	Purpose
Step 8	exit Example: Device(config-if) # exit	Exits interface configuration mode.
Step 9	interface pseudowire <i>number</i> Example: Device(config-if) # interface pseudowire 17	Establishes an interface pseudowire with a value that you specify and enters pseudowire configuration mode. <ul style="list-style-type: none"> • <i>number</i> — Specifies the number of the pseudowire to be configured.
Step 10	encapsulation mpls Example: Device(config-if) # encapsulation mpls	Specifies the tunneling encapsulation.
Step 11	neighbor <i>peer-device-id vc-id</i> Example: Device(config-if) # neighbor 4.4.4.4 17	Specifies the peer IP address and virtual circuit (VC) ID value of a Layer 2 VPN (L2VPN) pseudowire.
Step 12	load-balance flow ip <i>dst-ip</i> Example: Device(config-if) # load-balance flow ip 192.168.2.25	Enables edge load balancing of traffic across multiple core facing interfaces using equal cost multipaths (ECMP). <ul style="list-style-type: none"> • <i>dst-ip</i>— Destination IP address
Step 13	load-balance flow-label both Example: Device(config-if) # load-balance flow-label both	Enables core load balancing based on flow-labels.
Step 14	l2vpn xconnect context <i>context-name</i> Example: Device(config) # l2vpn xconnect context vpws17	Creates a Layer 2 VPN (L2VPN) cross connect context and enters xconnect context configuration mode.

	Command or Action	Purpose
Step 15	member <i>interface-id</i> Example: Device(config-if)# member TenGigabitEthernet1/0/21	Specifies interface that forms a Layer 2 VPN (L2VPN) cross connect.
Step 16	member pseudowire <i>number</i> Example: Device(config-if)# member pseudowire 17	Specifies pseudowire interface that forms a Layer 2 VPN (L2VPN) cross connect.
Step 17	end Example: Device(config)# end	Returns to privileged EXEC mode.

Configuration Examples for EoMPLS

Figure 1: EoMPLS Topology



PE Configuration	CE Configuration
<pre> mpls ip mpls label protocol ldp mpls ldp graceful-restart mpls ldp router-id loopback 1 force interface Loopback1 ip address 1.1.1.1 255.255.255.255 ip ospf 100 area 0 router ospf 100 router-id 1.1.1.1 nsf system mtu 9198 port-channel load-balance dst-ip ! interface GigabitEthernet2/0/39 no switchport no ip address no keepalive ! interface pseudowire101 encapsulation mpls neighbor 4.4.4.4 101 load-balance flow ip dst-ip load-balance flow-label both l2vpn xconnect context pw101 member pseudowire101 member GigabitEthernet2/0/39 ! interface TenGigabitEthernet3/0/10 switchport trunk allowed vlan 142 switchport mode trunk channel-group 42 mode active ! interface Port-channel42 switchport trunk allowed vlan 142 switchport mode trunk ! interface Vlan142 ip address 142.1.1.1 255.255.255.0 ip ospf 100 area 0 mpls ip mpls label protocol ldp ! </pre>	<pre> interface GigabitEthernet1/0/33 switchport trunk allowed vlan 912 switchport mode trunk spanning-tree portfast trunk ! interface Vlan912 ip address 10.91.2.3 255.255.255.0 ! </pre>

The following is a sample output of **show mpls l2 vc vcid vc-id detail** command :

```

Local interface: Gil/0/1 up, line protocol up, Ethernet up
  Destination address: 1.1.1.1, VC ID: 101, VC status: up
Output interface: Vl182, imposed label stack {17 16}
Preferred path: not configured
Default path: active
Next hop: 182.1.1.1
Load Balance: ECMP
flow classification: ip dst-ip
Create time: 06:22:11, last status change time: 05:58:42

```



```

Last label FSM state change time: 05:58:42  Signaling protocol:
LDP, peer 1.1.1.1:0 up
Targeted Hello: 4.4.4.4(LDP Id) -> 1.1.1.1, LDP is UP
Graceful restart: not configured and not enabled
Non stop routing: not configured and not enabled
Status TLV support (local/remote)   : enabled/supported
LDP route watch                      : enabled
Label/status state machine           : established, LruRru
Last local dataplane  status rcvd: No fault
Last BFD dataplane   status rcvd: Not sent
Last BFD peer monitor status rcvd: No fault
Last local AC  circuit status rcvd: No fault
Last local AC  circuit status sent: No fault
Last local PW i/f circ status rcvd: No fault
Last local LDP TLV  status sent: No fault
Last remote LDP TLV  status rcvd: No fault
Last remote LDP ADJ  status rcvd: No fault
MPLS VC labels: local 512, remote 16
Group ID: local n/a, remote 0
MTU: local 9198, remote 9198
Remote interface description:  Sequencing: receive disabled, send disabled

Control Word: On (configured: autosense)
SSO Descriptor: 1.1.1.1/101, local label: 512
Dataplane:
SSM segment/switch IDs: 4096/4096 (used), PWID: 1
VC statistics:  transit packet totals: receive 172116845, send 172105364

transit byte totals:  receive 176837217071, send 172103349728
transit packet drops:  receive 0, seq error 0, send 0

```

The following is a sample output of **show l2vpn atom vc vcid vc-id detail** command :

```

pseudowire101 is up, VC status is up PW type: Ethernet
Create time: 06:30:41, last status change time: 06:07:12
Last label FSM state change time: 06:07:12
Destination address: 1.1.1.1 VC ID: 101
Output interface: Vl182, imposed label stack {17 16}
  Preferred path: not configured
  Default path: active  Next hop: 182.1.1.1
Load Balance: ECMP  Flow classification: ip dst-ip
Member of xconnect service pw101
Associated member Gi1/0/1 is up, status is up
Interworking type is Like2Like  Service id: 0xe5000001
Signaling protocol: LDP, peer 1.1.1.1:0 up
Targeted Hello: 4.4.4.4(LDP Id) -> 1.1.1.1, LDP is UP
Graceful restart: not configured and not enabled
Non stop routing: not configured and not enabled
PWid FEC (128), VC ID: 101  Status TLV support (local/remote)
: enabled/supported
  LDP route watch                      : enabled
Label/status state machine           : established, LruRru

```

```

Local dataplane status received      : No fault
BFD dataplane status received       : Not sent
BFD peer monitor status received    : No fault
Status received from access circuit : No fault
Status sent to access circuit       : No fault
Status received from pseudowire i/f : No fault
Status sent to network peer         : No fault
Status received from network peer   : No fault
Adjacency status of remote peer     : No fault
Sequencing: receive disabled, send disabled Bindings
  Parameter      Local              Remote
-----
Label            512                  16
Group ID         n/a                  0
Interface

MTU              9198                  9198
Control word on (configured: autosense) on
PW type          Ethernet              Ethernet
VCCV CV type 0x02 LSPV [2]           0x02 LSPV [2]

VCCV CC type 0x06 RA [2], TTL [3]     0x06 RA [2], TTL [3]
Status TLV       enabled              supported
Flow Label       T=1, R=1              T=1, R=1
SSO Descriptor: 1.1.1.1/101, local label: 512
Dataplane:
SSM segment/switch IDs: 4096/4096 (used), PWID: 1
Rx Counters      176196691 input transit packets, 181028952597 bytes
                  0 drops, 0 seq err
Tx Counters      176184928 output transit packets, 176182865992 bytes
                  0 drops

```

The following is a sample output of **show mpls forwarding-table** command:

Local	Outgoing	Prefix	Bytes	Label	Outgoing	Next Hop
Label	Label	or Tunnel Id	Switched	interface		
57	18	1.1.1.1/32	0	Po45	145.1.1.1	
	No Label	1.1.1.1/32	0	Te1/0/2	147.1.1.1	
	No Label	1.1.1.1/32	0	Te1/0/11	149.1.1.1	
	No Label	1.1.1.1/32	0	Te1/0/40	155.1.1.1	