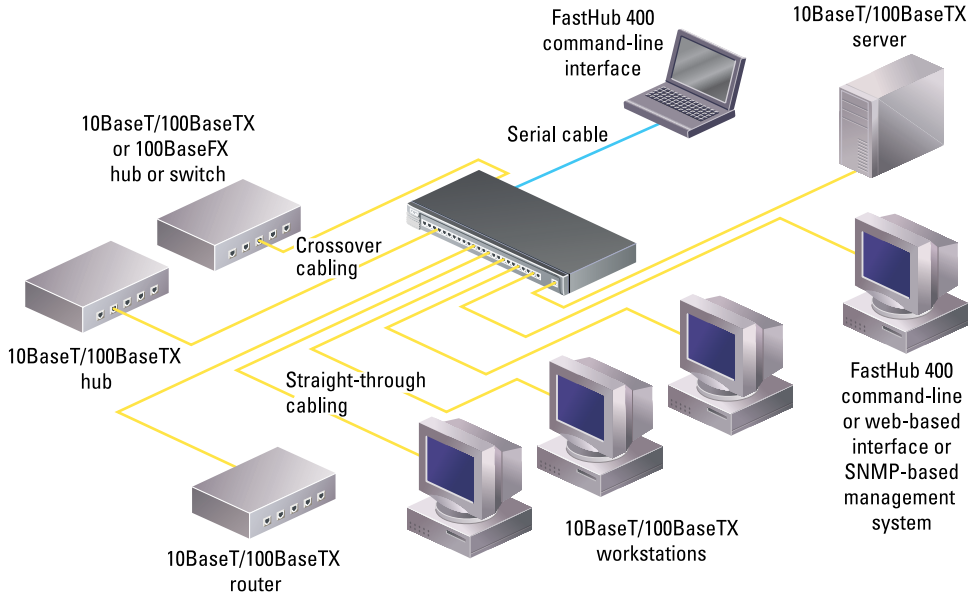


# Quick Start Guide

## FASTHUB 400 10/100 SERIES CABLING AND START UP



1

TAKE OUT WHAT YOU NEED

2

CONNECT THE HUB TO OTHER NETWORK DEVICES

3

ASSIGN IP INFORMATION TO THE HUB

4

DISPLAY THE WEB-BASED HUB MANAGER

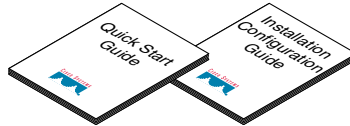


# 1 Take Out What You Need

FastHub 400 10/100 series hub  
(12- or 24-port model)



*FastHub 400 10/100 Series Installation  
and Configuration Guide*



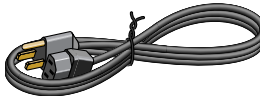
RJ-45-to-RJ-45 rollover console cable  
(FastHub 412M and FastHub 424M  
models only)



RJ-45-to-DB-9 console-to-PC adapter  
(FastHub 412M and FastHub 424M  
models only)



Black AC power cable



Rack-mount kit



Rubber feet

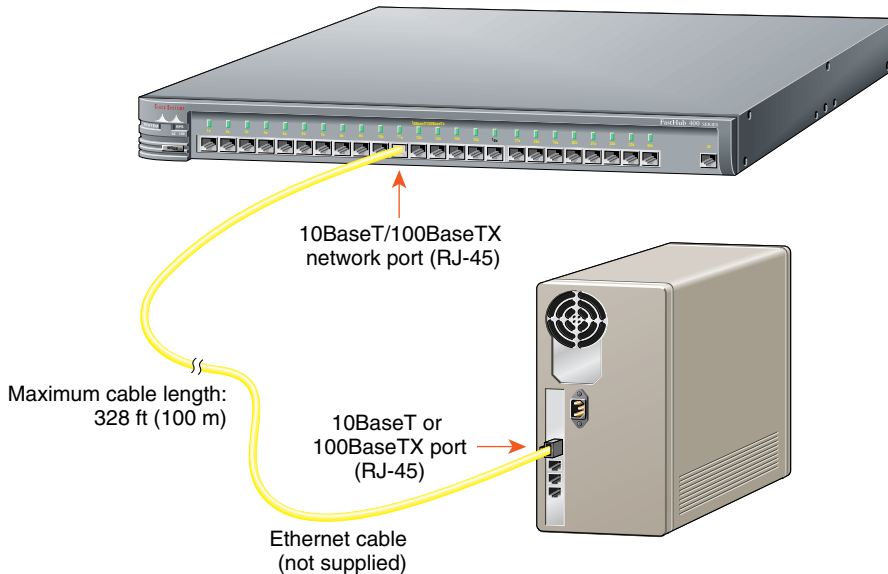


If any item is missing or damaged, contact your Cisco representative or reseller for support.

*Note: You need to supply Category 3, 4, or 5 straight-through or crossover cables to connect to Ethernet devices.*

## 2

# Connect the Hub to Other Network Devices



*Note: Use a straight-through cable to connect two ports when one of the ports is designated with an X. Use a crossover cable to connect two ports when both ports are designated with an X.*

## Connect the Hub to Servers, Routers, and Workstations

- Connect a Category 3, 4, or 5 **straight-through** cable to any 10/100 port on the hub and to a 10BaseT port on the workstation, server, or router.
- Connect a Category 5 **straight-through** cable to any 10/100 port on the hub and to a 100BaseTX port on the workstation, server, or router.

## Connect the Hub to Switches and Other Hubs

- Connect a Category 3, 4, or 5 **crossover** cable to any 10/100 port on the hub and to a 10BaseT port on the target switch or hub.
- Connect a Category 5 **crossover** cable to any 10/100 port on the hub and to a 100BaseTX port on the target switch or hub.

**2**

## Connect the Hub to Other Network Devices (continued)



### (Optional) Install the Switched Uplink Module in the Hub

- 1 Power off the hub.
- 2 Remove and set aside the screws attaching the faceplate to expansion slot on the hub. The screws will be used later in Step 6.
- 3 Remove the faceplate from the hub and store it for future use.
- 4 Slide the module into the slot card-guides until you feel it touch the back of the hub.
- 5 Push the module firmly until it snaps into place and is firmly seated.
- 6 Insert and tighten the screws on the module faceplate.
- 7 Power on the hub.

### (Optional) Connect to the Switched Uplink Module Port

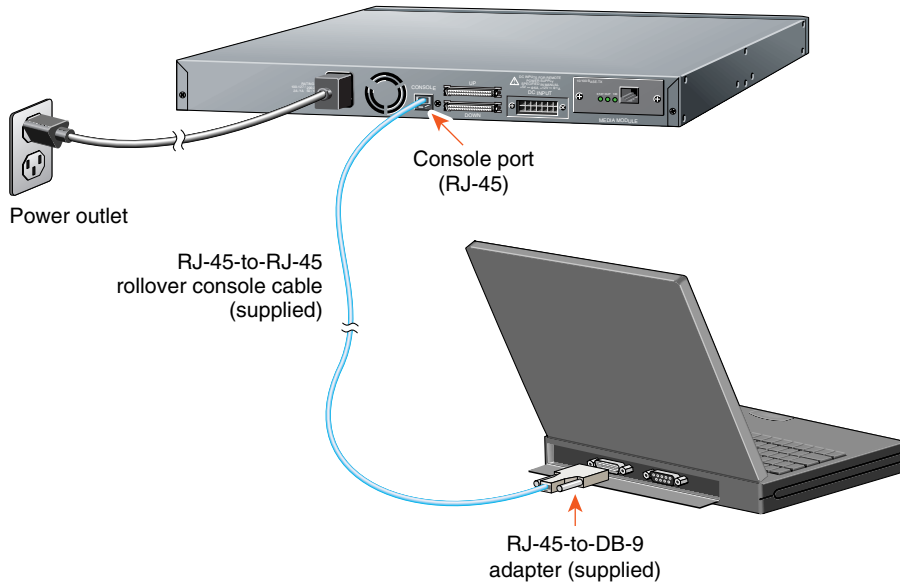
Insert a connector according to the type of module (10/100 or 100BaseFX), as follows:

- 10BaseT/100BaseTX connector—Insert the connector until it snaps into place in the module port.

*Note:* Use a straight-through cable to connect two ports when one of the ports is designated with an X. Use a crossover cable to connect two ports when both ports are designated with an X.

- 100BaseFX SC connector—Remove the rubber plugs from the fiber-optic port on the module and store them for future use. Insert the connector in the fiber-optic module port.

## 2 Connect the Hub to Other Network Devices (continued)



### (Optional) Connect the Console Cable

- 1 Make sure console port settings of the FastHub 400M model match the settings of the terminal, PC, or laptop. The default settings of the hub console port are 9600 baud, 8 data bits, 1 stop bit, no parity, and no flow control.
- 2 Connect the rollover console cable to the CONSOLE port on the hub.
- 3 Connect the other end of the rollover cable to your terminal, PC, or laptop (if necessary, use an appropriate adapter, such as the supplied RJ-45-to-DB-9 adapter).
- 4 From your terminal, PC, or laptop, start the terminal emulation program.

### Power Up the Hub

- 1 Connect one end of the power cord to the hub and the other end to a power source.

*Note:* You can use the internal power supply and the Cisco 600W AC Redundant Power System (RPS). Attach only the Cisco RPS (model PWR600-AC-RPS) to the RPS receptacle.

- 2 Wait approximately 2 minutes for the hub to complete its power-on self-test (POST).

After POST completes, the Continue with configuration dialog? prompt appears on the management station. You can then follow the prompts to assign IP information to the hub.

## 3 (Optional) Assign IP Information to the Hub

The hub is designed to operate with little or no user intervention. In most cases, you can use it with its default settings.

Assign IP information to the FastHub 400M model so that you can use the FastHub 400 series Hub Manager web-based interface and so that the hub can communicate with local routers and the intranet.

Contact your system administrator for the hub IP information, and record it here.

Hub IP address:    \_\_\_ . \_\_\_ . \_\_\_ . \_\_\_

Subnet mask:     \_\_\_ . \_\_\_ . \_\_\_ . \_\_\_

Default gateway: \_\_\_ . \_\_\_ . \_\_\_ . \_\_\_

**1** From the terminal or PC, enter **Y**:  
Continue with configuration dialog? **Y**

**2** Enter the IP address (for example:  
10.1.105.20):  
Enter IP address: **10.1.105.20**

**3** Enter the subnet mask (IP netmask)  
(for example: 255.255.255.0):  
Enter IP netmask: **255.255.255.0**

**4** Enter the IP address of the default gateway (for example: 10.1.105.254):

Enter IP default gateway: **10.1.105.254**

The following information is displayed:

```
The following configuration command
script was created:
ip address 10.1.105.20 255.255.255.0
ip default-gateway 10.1.105.254
!
end
```

**5** Enter **Y**:  
Use this configuration? **Y**

The following information is displayed:

```
Building configuration...
Use the enabled mode 'configuration'
command to modify this configuration.
```

Press RETURN to get started.

**6** Press **Return**.

**7** Exit from the terminal session.

You can now display the FastHub 400 series Hub Manager.

## 4

## (Optional) Display the FastHub 400 Series Hub Manager

If you have the IP address to the hub, you can display the FastHub 400 series Hub Manager from your intranet. You can use the FastHub 400 series Hub Manager to configure and monitor the hub.

- 1 Start Netscape Communicator (4.03 or higher) or Microsoft Internet Explorer (4.01 or higher). Make sure that Java and JavaScript are enabled.
- 2 Enter the IP address of the hub in the URL field if you are using Communicator (the Address field if you are using Internet Explorer).

The FastHub 400 series Hub Manager Home page appears.

The screenshot shows the FastHub 400 Series Hub Manager web interface. At the top, there is a navigation menu with tabs: HOME, PORT, GROUP, IP, SNMP, CDP, SYSTEM. Below the menu is the title "FastHub 400 Series Hub Manager" and "Basic System Configuration". The configuration fields include: System Name, IP Address (172.31.255.255), Physical Location, User/Contact Name, Assign/Change Password, and Reconfirm Password. Below the configuration fields is a visual representation of the hub's rear panel, showing a row of ports and a "Stack Connectors" section. The "Stack Connectors" section includes a legend for "Connected" (green), "Not Connected" (grey), "Link Up" (green), "No Link Status" (grey), "100 Mbps" (green), "10 Mbps or No Link Status" (grey), and "Port Partitioned" (red). At the bottom, there is a "Connecting to Cisco Help Resources" section with three numbered links.

Annotations on the left side of the screenshot:

- Click Apply after making changes on a page. (Points to the Apply button)
- Click Revert to discard unapplied changes on a page. (Points to the Revert button)
- Click Help for procedures and detailed field descriptions. (Points to the Help button)
- Click the Mode button to change the mode that the LEDs display for the fixed 10/100 ports. (Points to the Mode button)

Annotations on the right side of the screenshot:

- Click these topics to move from page to page. On Netscape Communicator only, when the cursor is above a topic, a pop-up briefly describes the options on that particular page. (Points to the navigation menu)
- Click a port to display its settings, status, and statistics. (Points to a port in the rear panel view)
- Click to display the settings, status, and statistics of an installed 10BaseT/100BaseTX or 100BaseFX switched uplink module. (Points to the Stack Connectors section)
- Shows when another hub is connected to a stacking connector on the hub rear panel. (Points to a port in the rear panel view)

Text at the bottom of the screenshot:

All contents copyright © 1998 by Cisco Systems, Inc.

Telnet - Connect to the command line interface.

Connecting to Cisco Help Resources

1. [Cisco Connection Online \(CCO\)](#) - Display the CCO home page, which displays links to other Cisco resources.
2. [Technical Assistance Center \(TAC\)](#) - Send e-mail to TAC. You can also call TAC at 1-800-553-2447 or 1-408-526-7209.
3. [HTML Interface Development Group](#) - Send e-mail to the development group responsible for the Hub Manager.

*Note: The FastHub 400 10/100 Series Installation and Configuration Guide and the FastHub 400 10/100 series Hub Manager online help provide complete information about the web console and describe how to configure and monitor the hub.*



#### Corporate Headquarters

Cisco Systems, Inc.  
170 West Tasman Drive  
San Jose, CA 95134-1706  
USA

<http://www.cisco.com>  
Tel: 408 526-4000  
800 553-NETS (6387)  
Fax: 408 526-4100

#### European Headquarters

Cisco Systems Europe s.a.r.l.  
Parc Evolic, Batiment L1/L2  
16 Avenue du Quebec  
Villebon, BP 706

91961 Courtaboeuf Cedex  
France  
<http://www-europe.cisco.com>  
Tel: 33 1 6918 61 00  
Fax: 33 1 6928 83 26

#### Americas

##### Headquarters

Cisco Systems, Inc.  
170 West Tasman Drive  
San Jose, CA 95134-1706  
USA

<http://www.cisco.com>  
Tel: 408 526-7660  
Fax: 408 527-0883

#### Asia Headquarters

Nihon Cisco Systems K.K.  
Fuji Building, 9th Floor  
3-2-3 Marunouchi  
Chiyoda-ku, Tokyo 100  
Japan

<http://www.cisco.com>  
Tel: 81 3 5219 6250  
Fax: 81 3 5219 6001

**Cisco Systems has more than 200 offices in the following countries. Addresses, phone numbers, and fax numbers are listed on the Cisco Connection Online Web site at <http://www.cisco.com>.**

Argentina • Australia • Austria • Belgium • Brazil • Canada • Chile • China (PRC) • Colombia • Costa Rica • Czech Republic • Denmark  
England • France • Germany • Greece • Hungary • India • Indonesia • Ireland • Israel • Italy • Japan • Korea • Luxembourg • Malaysia  
Mexico • The Netherlands • New Zealand • Norway • Peru • Philippines • Poland • Portugal • Russia • Saudi Arabia • Scotland • Singapore  
South Africa • Spain • Sweden • Switzerland • Taiwan, ROC • Thailand • Turkey • United Arab Emirates • United States • Venezuela

AccessPath, Any to Any, AtmDirector, the CCIE logo, CD-PAC, Centri, the Cisco Capital logo, *CiscoLink*, the Cisco Management Connection logo, the Cisco NetWorks logo, the Cisco Powered Network logo, the Cisco Press logo, the Cisco Technologies logo, ClickStart, ControlStream, DAGAZ, Fast Step, FireRunner, IGX, IOS, JumpStart, Kernel Proxy, LoopRunner, MGX, Natural Network Viewer, NetRanger, NetRanger Director, NetRanger Sensor, NetSonar, *Packet*, PIX, Point and Click Internetworking, Policy Builder, Precept, RouteStream, Secure Script, SMARTnet, SpeedRunner, Stratm, StreamView, *The Cell*, TrafficDirector, TransPath, ViewRunner, VirtualStream, VlanDirector, Workgroup Director, and Workgroup Stack are trademarks; Changing the Way We Work, Live, Play, and Learn, Empowering the Internet Generation, The Internet Economy, and The New Internet Economy are service marks; and BPX, Catalyst, Cisco, Cisco IOS, the Cisco IOS logo, Cisco Systems, the Cisco Systems logo, Enterprise/Solver, EtherChannel, FastHub, Foresight, FragmentFree, IP/TV, IPX, LightStream, LightSwitch, MICA, Phase/IP, StrataSphere, StrataView Plus, and SwitchProbe are registered trademarks of Cisco Systems, Inc. in the U.S. and certain other countries. All other trademarks mentioned in this document are the property of their respective owners. (9811R)