

# CHAPTER 12

## Peripheral Status Screen

---

Revised: September, 2010, OL-21702-01

The Peripheral Status Screen shows the status of peripheral devices that are set up on the Cisco Telepresence System (CTS).

*Figure 12-1 Peripheral Status Screen*

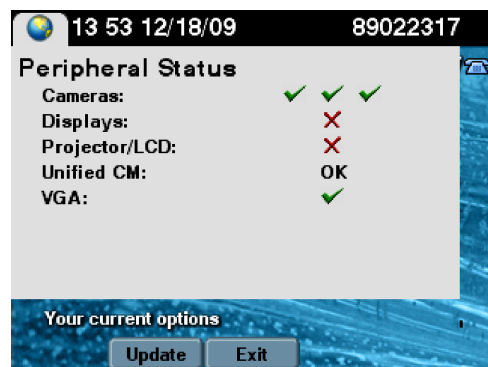




Table 12-1 shows available Peripheral Status Screen status buttons, icons, and softkeys.

**Table 12-1** Peripheral Status Screen Buttons, Icons, and Softkeys

| Navigation Type   | Description   |
|---|---|
| <b>Button</b>   | Touch any Favorites in the row to dial the corresponding number.  |
| <b>Icon</b>   |   |
|  | Green check-mark. The corresponding peripheral is connected and configured.   |
|  | Red X. The corresponding peripheral is not connected or is not configured.<br><br><b>Note</b> If you have a three-camera system (CTS 1300 for example), a status icon will appear for each camera: right, left, and center. Systems with multiple displays also show status icons for each display. |
| <b>Softkey</b>  |   |
| <b>Update</b>   | Updates the Peripheral Devices Screen.  |
| <b>Exit</b>   | Exits the Peripheral Devices Screen and returns you to previous screen.   |

## Using Media Controls

If you have a secondary media input source such as a Cisco Digital Media Player (DMP), you can enable or disable the audio from your DMP.

To enable or disable the audio from you DMP, touch the **Media Ctrl** softkey from the Idle screen, as shown in Figure 12-2. The **Media Ctrl** softkey is displayed whenever the CTS detects that a secondary audio device is connected.

**Figure 12-2** Using Media Controls



**Related Information**

See the [Cisco TelePresence System User Guide](#) for more information about using the Cisco TelePresence System and the CTS Cisco Unified IP Phone.

