

CHAPTER 10

System Information Screen

Revised: September, 2010, OL-21702-01

The System Information Screen allows you to view system information (the IP address of the Cisco TelePresence (CTS) endpoint, for example) and security settings.

Figure 10-1 System Information Screen

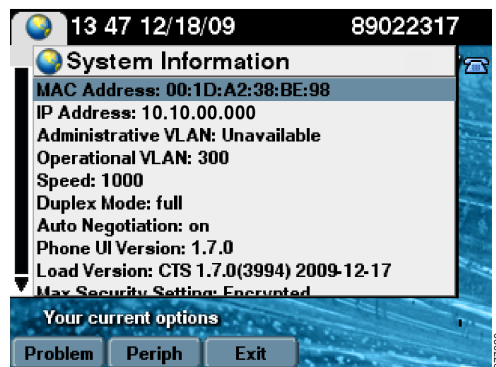


Table 10-1 shows available System Information Screen softkeys.

Table 10-1 System Information Screen Softkeys

Navigation Type	Description
Softkey	
Problem	Takes you to the Report a Problem Screen .
Periph	Takes you to the Peripheral Status Screen .
Exit	Takes you to the previous Screen (Manual Idle Screen).

Related Information

See the *Cisco TelePresence System User Guide* for more information about using the Cisco TelePresence System and the CTS Cisco Unified IP Phone.