



## Uploading the Cisco CMX/MSE ISO Image to the Cisco MSE 3365

---



### Note

---

Make sure the Serial over Lan (SoL) functionality is enabled on the Cisco Unified Communication System (UCS). To enable SoL on the Cisco UCS server, use the **set enabled yes** command. For more information on enabling SoL, refer to the Cisco UCS documentation on Cisco.com.

---

- [Uploading the Cisco CMX/MSE ISO Image to the Cisco MSE 3365, page 1](#)

## Uploading the Cisco CMX/MSE ISO Image to the Cisco MSE 3365



### Note

---

Make sure the Serial over Lan (SoL) functionality is enabled on the Cisco Unified Communication System (UCS). To enable SoL on the Cisco UCS server, use the **set enabled yes** command. For more information on enabling SoL, refer to the Cisco UCS documentation on Cisco.com.

---

## Uploading the Cisco CMX/MSE ISO Image to the Cisco MSE 3365 Using Newer CIMC Versions

MSE 3365 Software Reset is a process used to load the MSE 3365 with a required image (MSE 8.x, or CMX 10.x). The MSE 3365 is a UCS-based device, and can be accessed through the Cisco Integrated Management Controller (CIMC) interface.

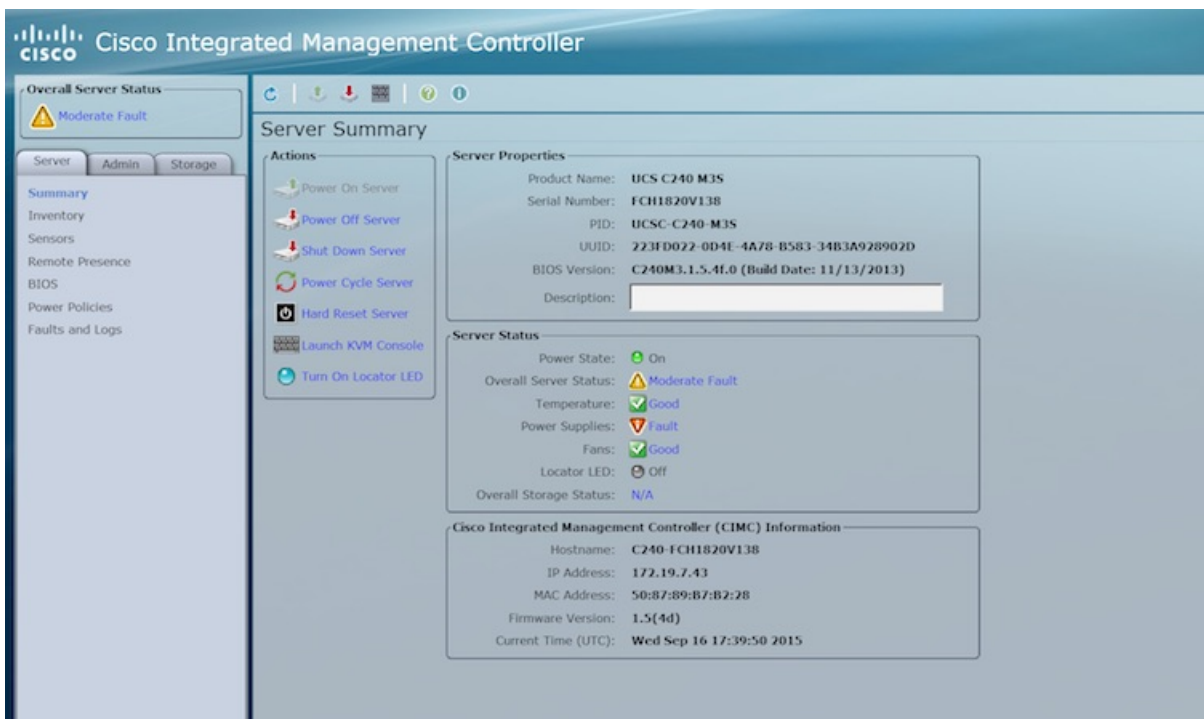
## Before You Begin

Java Version 1.6.0.14 must be installed on the client machine used to access your MSE 3365 device.

**Step 1** Download the Cisco MSE ISO image from the [Download Software](#) page on cisco.com.

**Step 2** Open a browser, and enter the IP address of your device to log in to the Cisco Integrated Management Controller (CIMC) GUI interface (Address format is https://x.x.x.x).

**Figure 1: Cisco Integrated Management Controller Interface**



**Step 3** Click **Server** and in the **Server Summary** page, click **Launch KVM Console** and click **OK**. A mini executable file is downloaded.

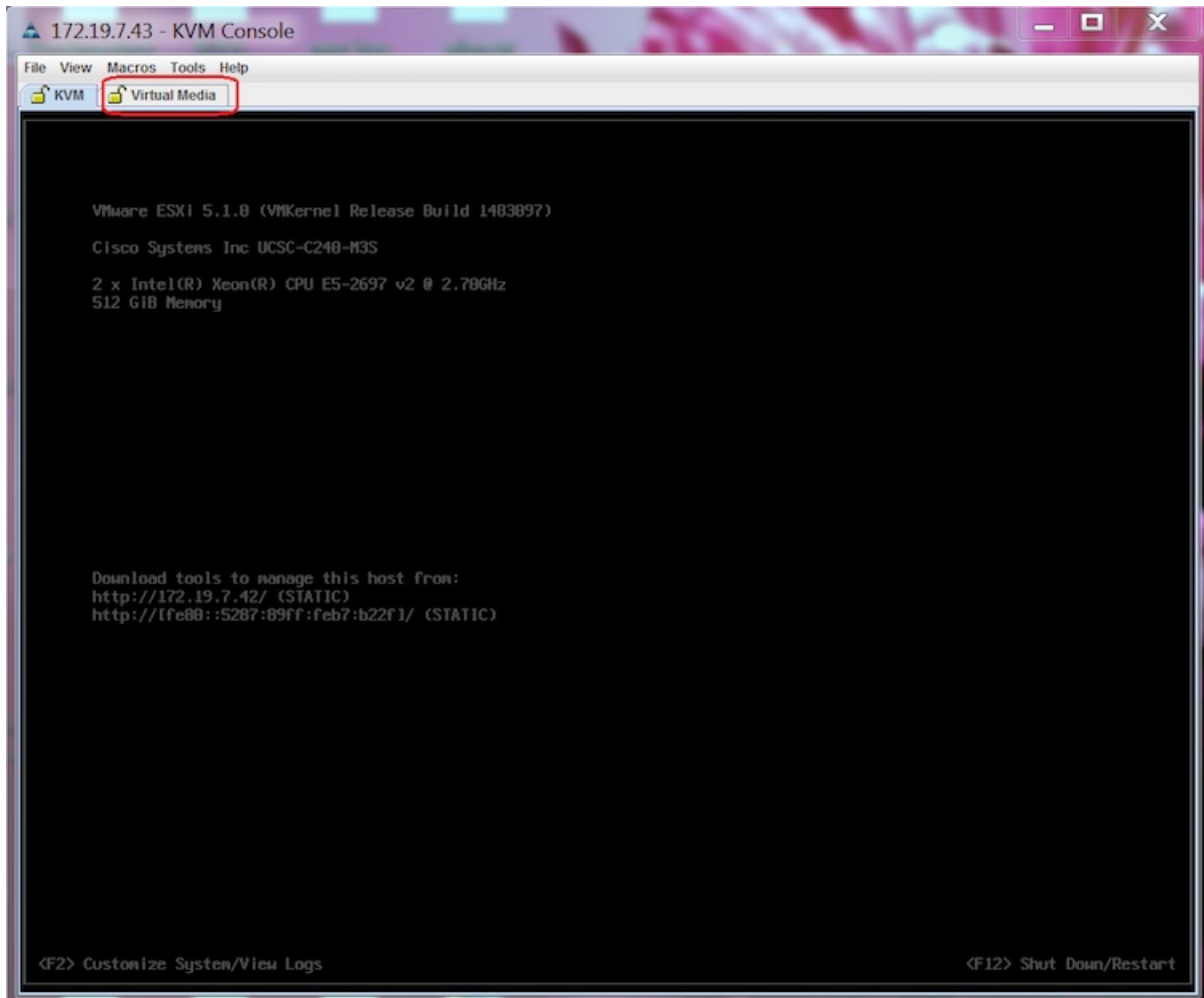
**Step 4** Open the file using javaws.exe from the bin folder of your Java installation. If a security error prevents you from installing the file, add the URL of the CIMC to the list of exception sites, using the steps below.

- a) Choose **Control Panel > Programs > Java**.
- b) Choose **Security > Edit Site List > Add** and add the CIMC URL.
- c) Click **OK**.

The installation is initiated.

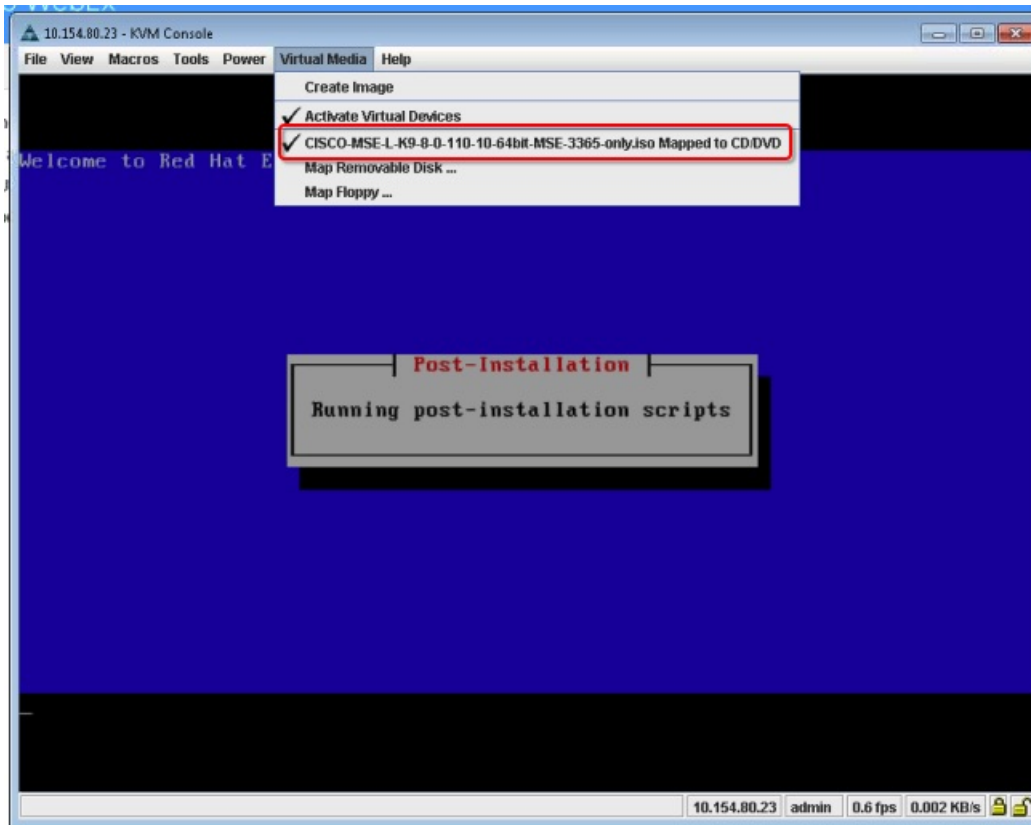
**Step 5** In the KVM Console window that is displayed after the installation, click the **Virtual Media** tab.

**Figure 2: KVM Console**



**Step 6** In the **Virtual Media** window that is displayed, choose **Activate Virtual Devices > Select "Map CD/DVD**. Browse and select the downloaded MSE image.

**Figure 3: ISO Image Selected**



The recovery process begins.

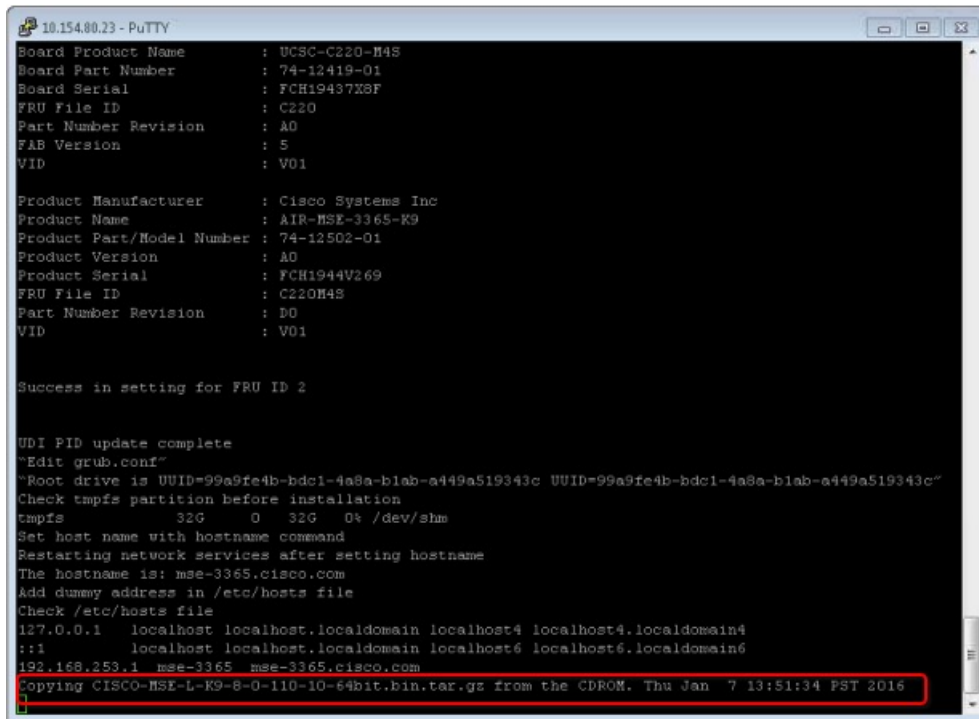
### Step 7

During the recovery process, respond to the prompt to press ENTER by starting an SSH session to the CIMC interface, as the KVM console does not permit you to press ENTER (With CSCuw32543). Use the following commands to initiate the SSH session:

```
ssh <cimc-ip-address>
connect host
```

You can see that the image is being copied from CDROM. The process can take up to forty-five minutes to copy.

**Figure 4: Copying from CDROM**



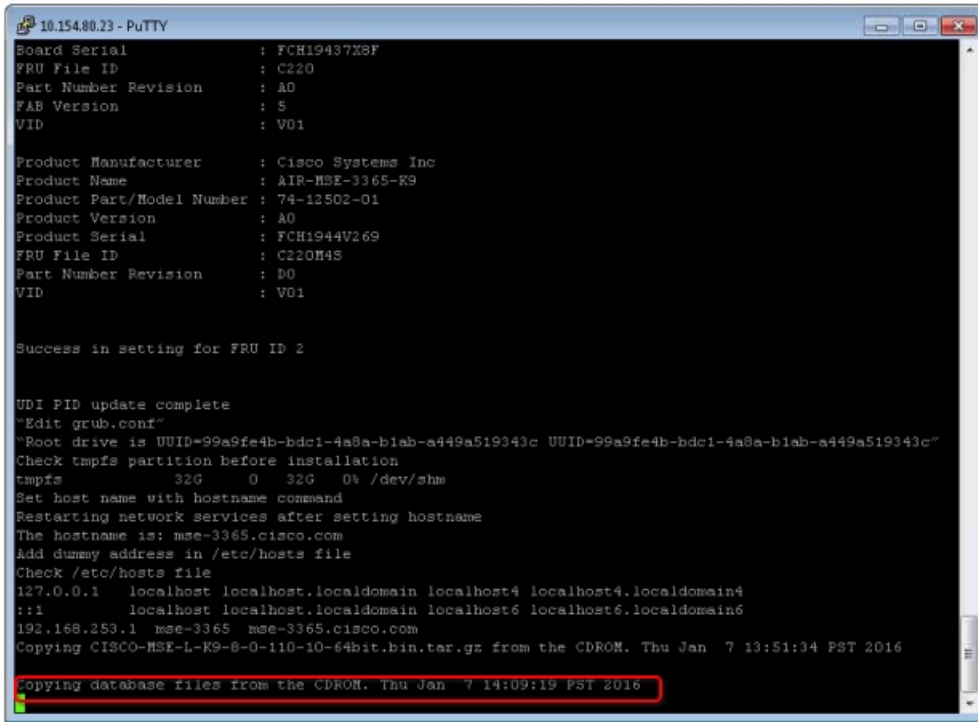
```
10.154.80.23 - PuTTY
Board Product Name      : UCSC-C220-M4S
Board Part Number       : 74-12418-01
Board Serial            : FCH19437XBF
FRU File ID             : C220
Part Number Revision    : A0
FAB Version             : 5
VID                     : V01

Product Manufacturer    : Cisco Systems Inc
Product Name            : AIR-MSE-3365-K9
Product Part/Model Number : 74-12502-01
Product Version         : A0
Product Serial          : FCH1944V269
FRU File ID             : C220H4S
Part Number Revision    : D0
VID                     : V01

Success in setting for FRU ID 2

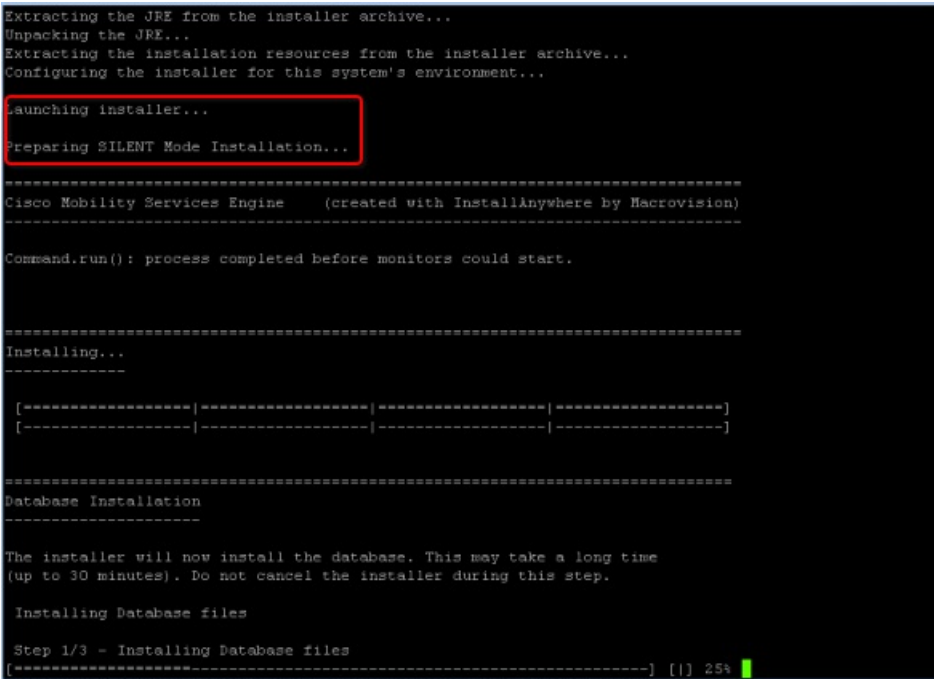
UDI FID update complete
"Edit grub.conf"
"Root drive is UUID=99a9fe4b-bdc1-4a8a-b1ab-a449a519343c UUID=99a9fe4b-bdc1-4a8a-b1ab-a449a519343c"
Check tmpfs partition before installation
tmpfs          32G      0  32G   0% /dev/shm
Set host name with hostname command
Restarting network services after setting hostname
The hostname is: mse-3365.cisco.com
Add dummy address in /etc/hosts file
Check /etc/hosts file
127.0.0.1    localhost localhost.localdomain localhost4 localhost4.localdomain4
::1        localhost localhost.localdomain localhost6 localhost6.localdomain6
192.168.253.1 mse-3365 mse-3365.cisco.com
Copying CISCO-MSE-L-K9-8-0-110-10-64bit.bin.tar.gz from the CDROM. Thu Jan 7 13:51:34 PST 2016
```

**Figure 5: Copying Database Files from CDROM**

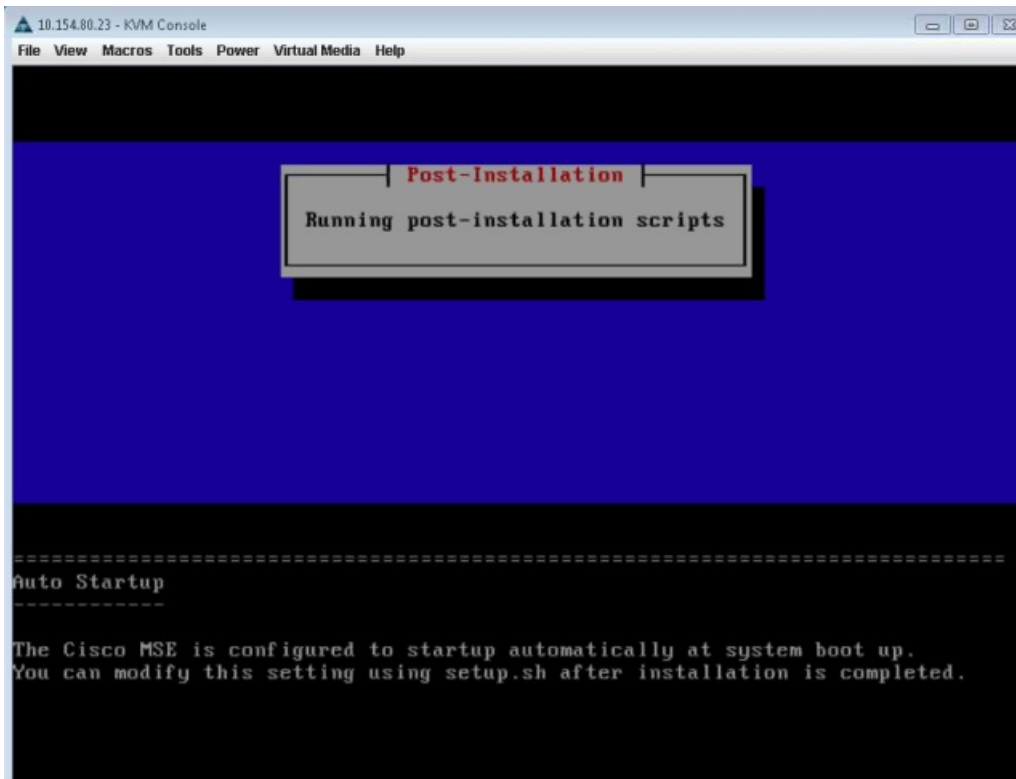


**Step 8** Once the image is copied, a silent installation is initiated.

**Figure 6: Preparing SILENT Mode Installation**

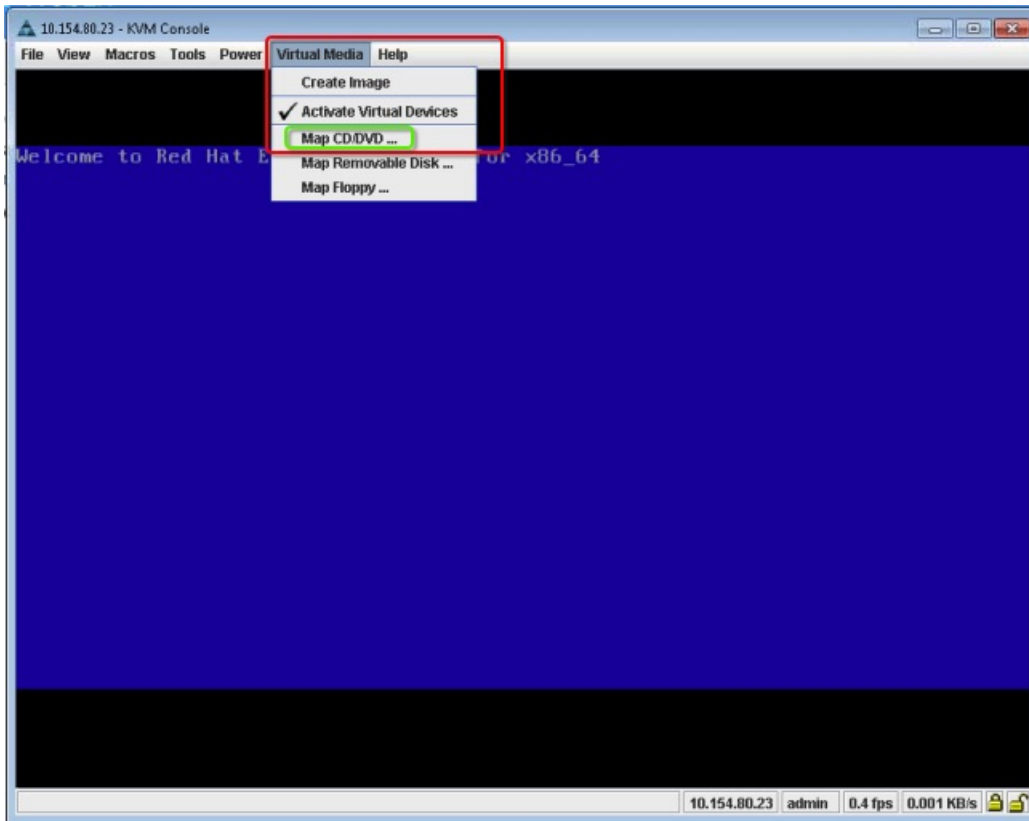


**Figure 7: Running Post-Installation Scripts**



- Step 9** The device boots up with the newly loaded image. The CD/DVD mapping is automatically unchecked. In case it is checked, uncheck the **Activate Virtual Devices** option, so that the BIOS setting is checked for the image copied on the HDD every time it reboots.

**Figure 8: Map CD/DVD**



## Uploading the Cisco CMX/MSE ISO Image to the Cisco MSE 3365 Using Older CIMC Versions

MSE 3365 Software Reset is a process used to load the MSE 3365 with a required image (MSE 8.x, or CMX 10.x). The MSE 3365 is a UCS-based device, and can be accessed through the Cisco Integrated Management Controller (CIMC) interface.



## Before You Begin

Java Version 1.6.0.14 must be installed on the client machine used to access your MSE 3365 device.

### Step 1

Download the Cisco MSE ISO image from the [Download Software](#) page on cisco.com.

### Step 2

Open a browser, and enter the IP address of your device to log in to the Cisco Integrated Management Controller (CIMC) GUI interface (Address format is https://x.x.x.x).

**Figure 9: Cisco Integrated Management Controller Interface**



### Step 3

Click **Server** and in the **Server Summary** page, click **Launch KVM Console** and click **OK**. A mini executable file is downloaded.

### Step 4

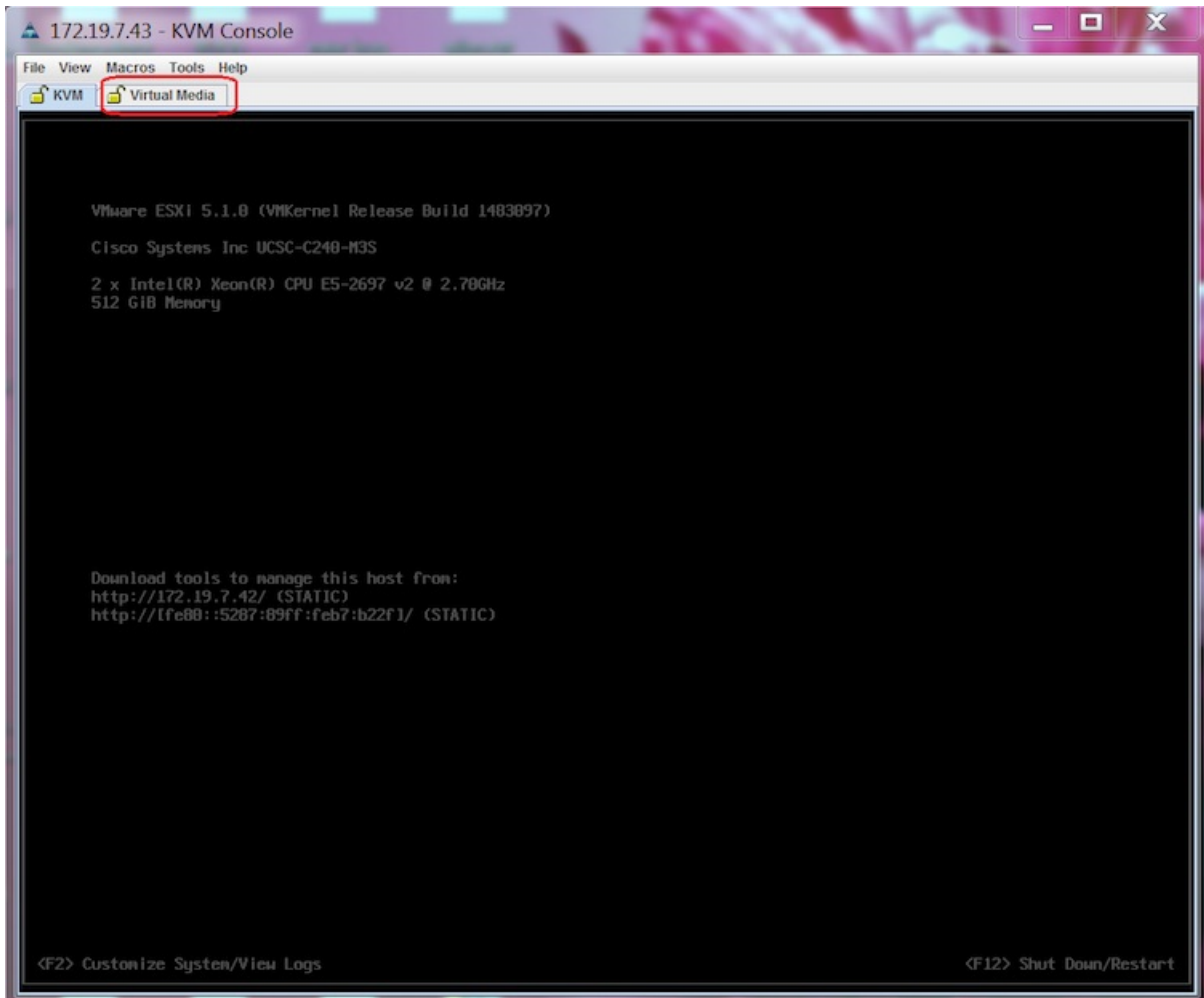
Open the file using javaws.exe from the bin folder of your Java installation. If a security error prevents you from installing the file, add the URL of the CIMC to the list of exception sites, using the steps below.

- Choose **Control Panel > Programs > Java**.
- Choose **Security > Edit Site List > Add** and add the CIMC URL.
- Click **OK**.

The installation is initiated.

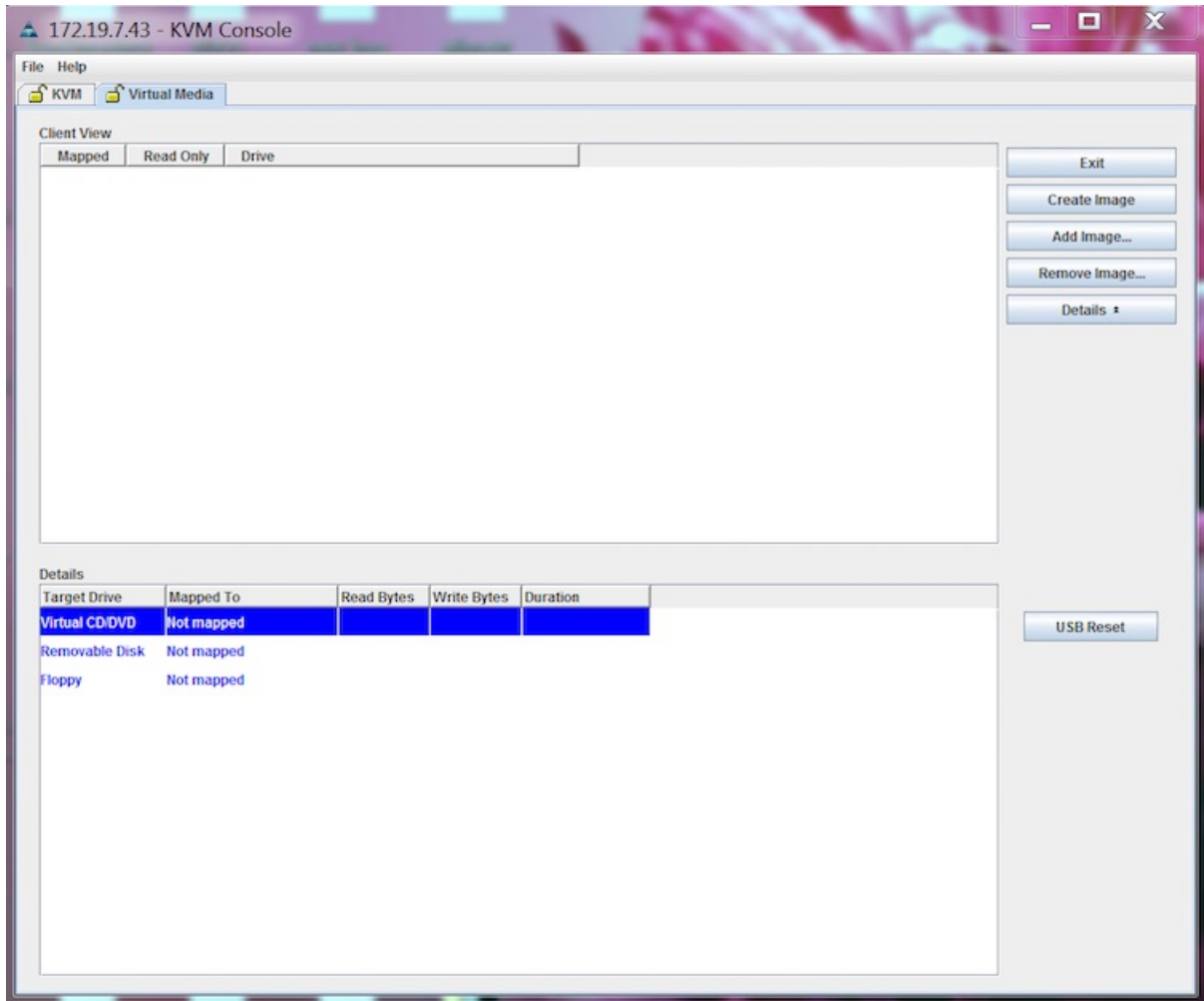
**Step 5** In the KVM Console window that is displayed after the installation, click the **Virtual Media** tab.

**Figure 10: KVM Console**



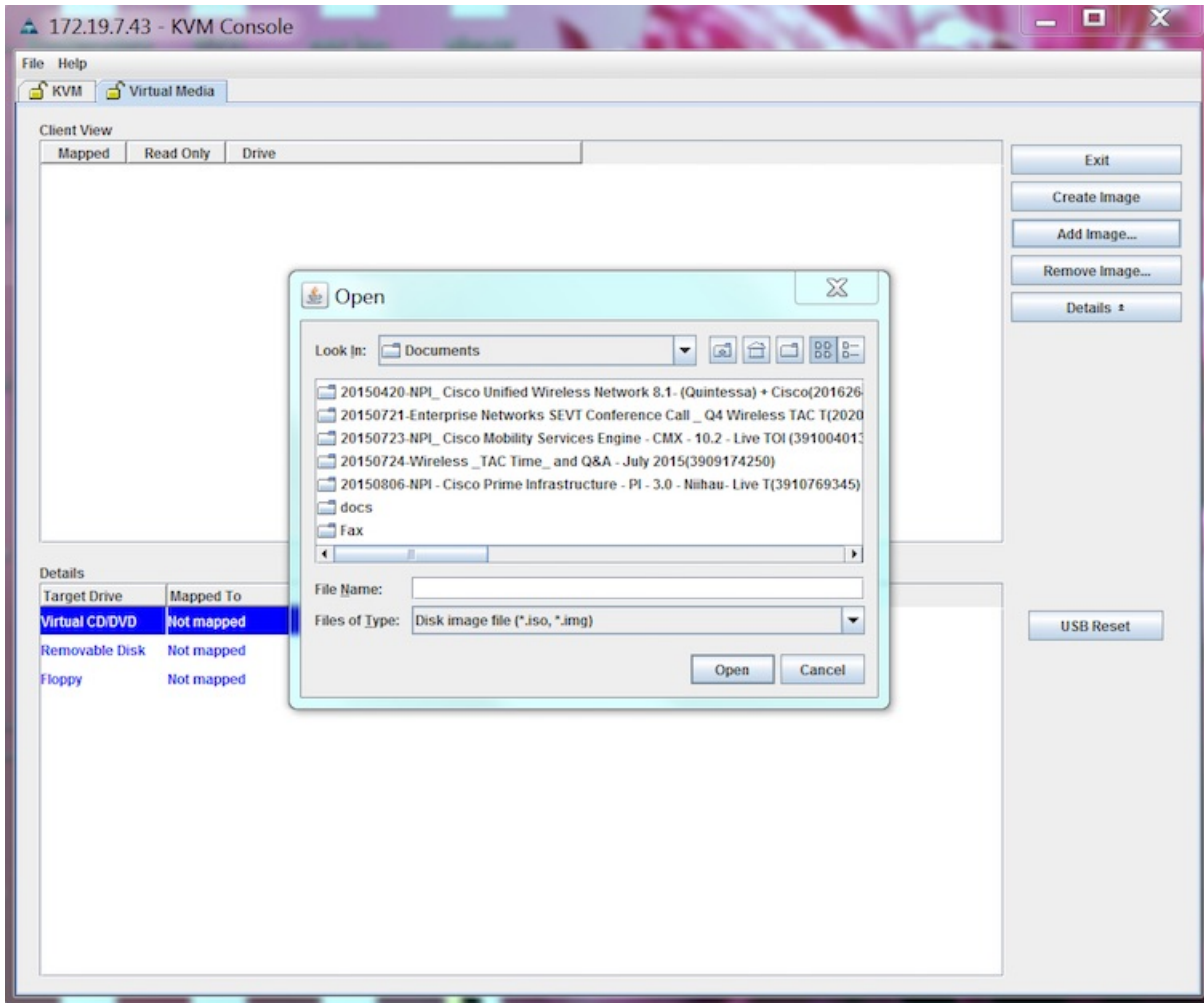
**Step 6** In the **Virtual Media** window that is displayed, click **Add Image**.

**Figure 11: Virtual Media**



**Step 7** Browse and select the downloaded MSE image and click **Open**.

**Figure 12: Select Downloaded Cisco MSE ISO Image**



The recovery process begins.

### Step 8

During the recovery process, respond to the prompt to press ENTER by starting an SSH session to the CIMC interface, as the KVM console does not permit you to press ENTER (With CSCuw32543). Use the following commands to initiate the SSH session:

```
ssh <cimc-ip-address>
connect host
```

The device boots up with the newly loaded image.