

Revised: November 4, 2024

# Cisco IEC6400 Edge Compute Appliance UCS Firmware Upgrade Guide, Release 4.2.3j

## Overview of the Cisco IEC6400 Firmware Upgrade

This guide describes how to upgrade the Cisco Integrated Management Controller (CIMC) and BIOS components of Cisco IEC6400 using the Host Upgrade Utility (HUU) software.



Note

The HUU software file does not update the IEC6400 gateway software.

## HUU File Details

The IEC6400-HUU-4.2.3j.img file contains the following modules:

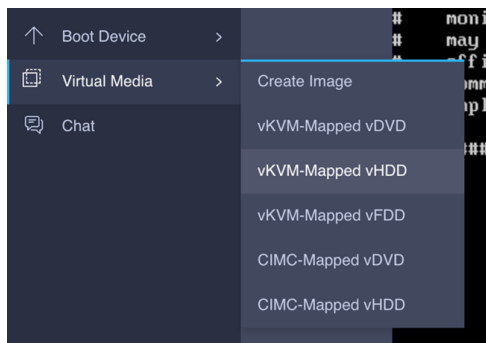
Component	Version
CIMC	4.2(3j)
BIOS	4.3.2e.0

## Upgrade the CIMC and BIOS Versions of IEC6400

### Before you begin

Ensure that you power off the IEC6400 gateway before performing this firmware upgrade.

- Step 1** Log into the **CIMC** web application using your credentials.
- Step 2** On the CIMC web application home page, click **Launch vKVM** to open **Cisco vKVM** console.
- Step 3** Choose **Virtual Media** > **vKVM-Mapped vHDD**.

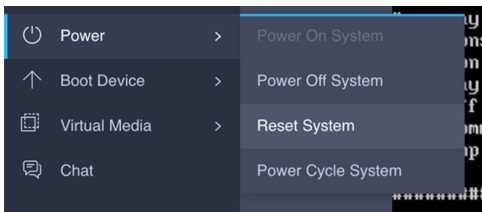


The **Map Virtual Media - Removable Disk** window appears.

- Step 4** Click **Browse** and choose the **IEC6400-HUU-4.2.3j.img** HUU image file to connect it.

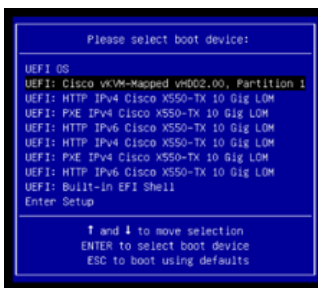
**Step 5** Click **Map Drive**.

**Step 6** Choose **Power > Reset System**, to reset the device.



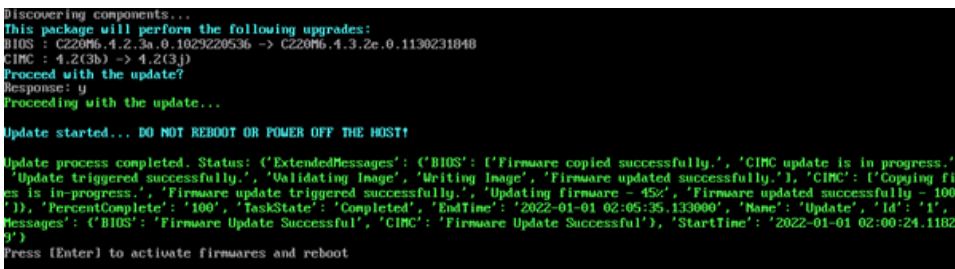
**Step 7** From the BIOS prompt, press **F6** to enter the boot menu.

**Step 8** In the boot device menu window, choose **UEFI: Cisco vKVM-Mapped vHDD2.00, Partition 1**, and press **Enter** to boot the image.



The HUU upgrade process checks the current versions of CIMC and BIOS. If the device prompts you to upgrade, enter **y** from the keyboard to begin the upgrade process.

**Step 9** Once the upgrade is complete, press **Enter** to activate the new versions of CIMC and BIOS and to reset the device.



You must remain connected until the process completes.

**Note**

## Verify the CIMC and BIOS Versions of IEC6400

**Step 1** Log into the **CIMC** web application using your credentials.



**Step 2** Click **Admin** on the left corner.

**Step 3** Choose **Admin > Firmware management** to display the current versions of the CIMC and BIOS.

Firmware Management

Component	Running Version	Backup Version	Bootloader Version	Status
<input type="checkbox"/> BMC	4.2(3)	4.2(3;240309).MFGONLY	4.2(3)	Completed Success
<input type="checkbox"/> BIOS	C220M6.4.3.2e.0_URWB	C220M6.4.2.3a.0_URWB	N/A	Completed Success