



Resource Management

- [Feature Summary and Revision History, on page 1](#)
- [Feature Description, on page 1](#)
- [How it Works, on page 2](#)

Feature Summary and Revision History

Summary Data

Table 1: Feature Summary

Applicable Product(s) or Functional Area	SMF
Applicable Platform(s)	SMI
Feature Default Setting	Enabled – Always-on
Related Changes in this Release	Not Applicable
Related Documentation	Not Applicable

Revision History

Table 2: Revision History

Revision Details	Release
First introduced.	Pre-2020.02.0

Feature Description

The UE IP address and ID allocation and management (resource management) feature is used by the SMF service and supported by the NodeMgr.

The Master NodeMgr initializes the following in Redis-DB:

- IP pools for all DNN profiles
- Running counter for ID
- Free list for ID

The NodeMgr hosts the resource management server functionality and exposes the APIs for:

- IP allocation and management
 - IP allocation
 - IP release
 - IP reallocation (release the current IP and allocate new IP for UE)
- ID allocation and management
 - ID allocation
 - ID release
 - ID reallocation (release the current ID and allocate new ID)

The SMF service runs the resource management client to use the Rmgr services.

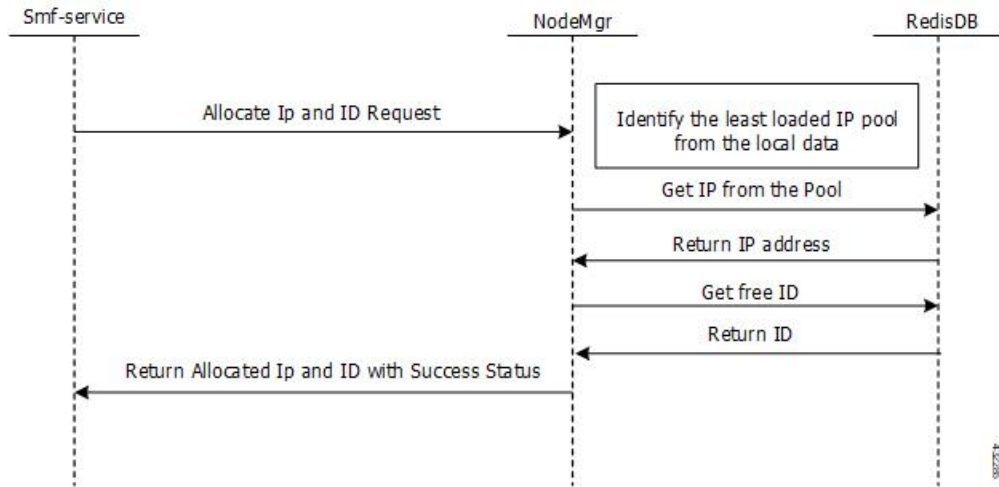
How it Works

Call Flows

IP and ID Allocation

The following figure illustrates the IP and ID allocation call flow.

Figure 1: IP and ID Allocation Call Flow



IP and ID Deallocation

The following figure illustrates the IP and ID deallocation call flow.

Figure 2: IP and ID Deallocation Call Flow

