

配置 VXLAN

目录

[简介](#)

[先决条件](#)

[要求](#)

[使用的组件](#)

[背景信息](#)

[术语](#)

[什么是VXLAN](#)

[为什么选择VXLAN](#)

[配置](#)

[网络图](#)

[配置](#)

[3172-A](#)

[9396-A](#)

[9396-B](#)

[验证](#)

[输出示例](#)

[3172-A](#)

[9396-A](#)

[9396-B](#)

[VXLAN 数据包捕获](#)

[故障排除](#)

[相关信息](#)

简介

本文档简要介绍虚拟可扩展局域网(VXLAN)和配置示例，以及验证命令和输出。

先决条件

要求

Cisco 建议您了解以下主题：

- 组播路由概念，例如交汇点 (RP) 和平台无关组播 (PIM)。
- 虚拟端口通道 (vPC) 概念。

本文档假设，在配置 VXLAN 前已建立 IP 路由和组播路由。

使用的组件

本文档中的信息基于以下软件和硬件版本：

- 运行版本 7.0(3)I1(1b) 的 Nexus 9396 系列用作 vPC 虚拟隧道终端 (VTEP)
- 运行版本 6.0(2)U5(1) 的 Nexus 3172
- 已安装 LAN_ENTERPRISE_SERVICES_PKG 许可证

本文档中的信息都是基于特定实验室环境中的设备编写的。本文档中使用的所有设备最初均采用原始 (默认) 配置。如果您的网络处于活动状态，请确保您了解所有命令的潜在影响。

背景信息

术语

VXLAN (虚拟可扩展局域网) - 该技术提供与当前 VLAN 相同的以太网第 2 层网络服务，但其可扩展性和灵活性更为出色。

VNID (VXLAN 网络标识符) - 用于定义广播域的 24 位网段 ID。可与“VXLAN 网段 ID”互换。

VTEP (虚拟隧道终端) - 这是执行封装和解封的设备。

NVE (网络虚拟接口) - 执行封装和解封所在的逻辑接口。

什么是 VXLAN

- VXLAN 技术允许使用任何 IP 路由协议将第 2 层 (L2) 网络覆盖在第 3 层 (L3) 底层之上。
- 它使用 MAC-in-UDP 封装 (将 MAC 封装到 UDP 中)。

VXLAN 解决了三个主要问题：

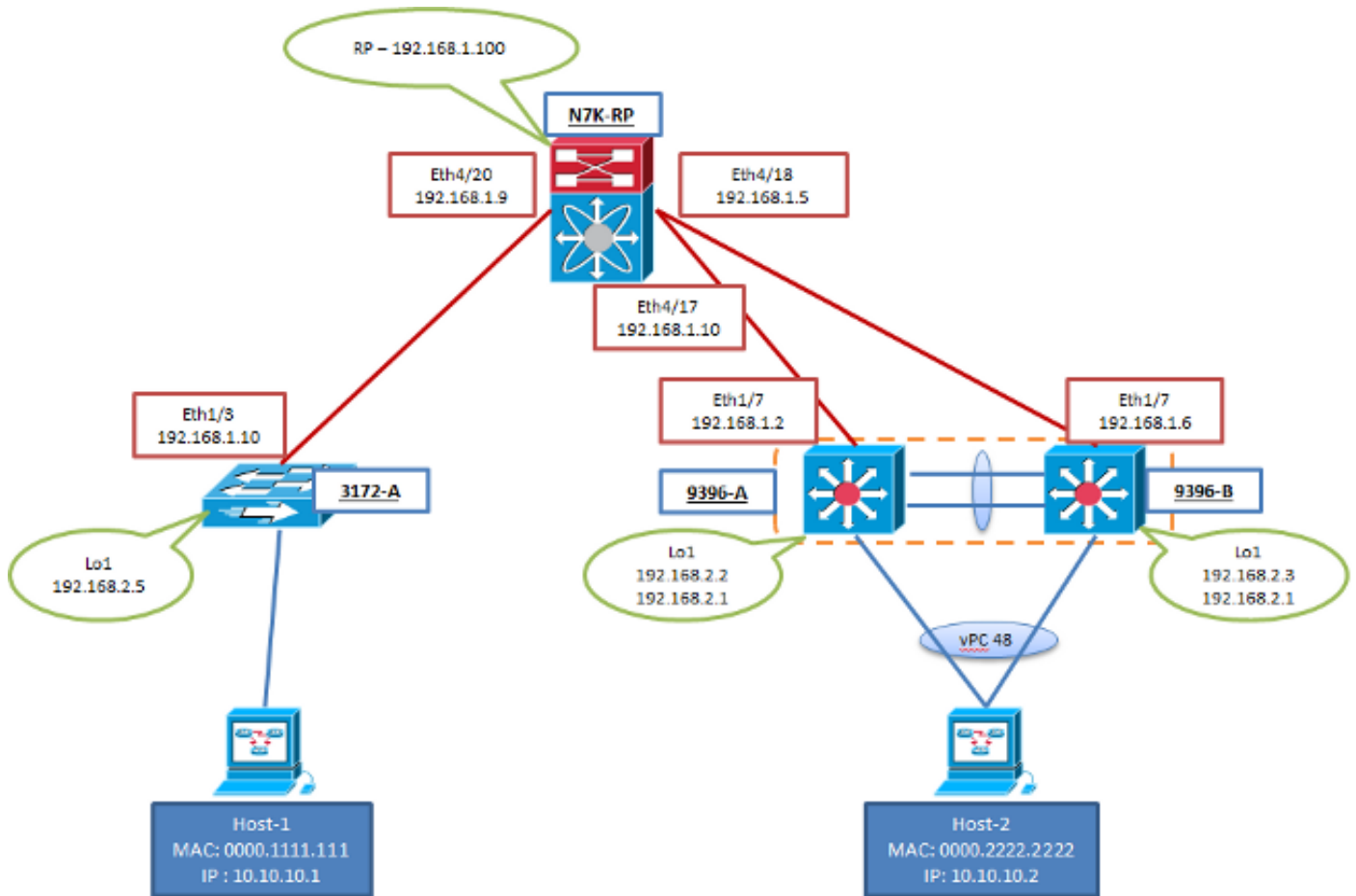
1. 支持 1600 万个 VNI (广播域)，而传统 VLAN 仅提供 4000 个。
2. 允许在 IP 网络中的任意位置扩展第 2 层网络。
3. 泛洪功能经过优化。

为什么选择 VXLAN

- VLAN 可扩展性 - VXLAN 可将第 2 层网段 ID 字段扩展到 24 位，最多可在同一个网络上支持 1600 万个唯一的第 2 层网段。
- 第 3 层边界上的第 2 层网段弹性 - VXLAN 将第 2 层帧封装在 IP UDP 报头中，因此第 2 层邻接关系可以跨路由器边界。
- 在传输网络中利用组播，以便模拟第 2 层网段中的广播、未知单播和组播泛洪行为。
- 利用等价多路径 (ECMP)，以通过传输网络实现最佳路径使用情况。

配置

网络图



配置

这些配置是 VXLAN 配置部分的特定配置。请注意，9396-A和B在vPC域中，而3172-A不在。这些配置假设，通过您选择的的路由协议，可以完全访问拓扑中的所有第 3 层接口。本示例中使用的是开放最短路径优先 (OSPF)。此外还假设，已在这些相同的第 3 层接口上建立组播路由。

3172-A

```
feature ospf
feature pim
feature vn-segment-vlan-based
feature nv overlay

vlan 10
  vn-segment 160010
vlan 20
  vn-segment 160020

interface nve1
  source-interface loopback1
  member vni 160010 mcast-group 203.0.113.1
  member vni 160020 mcast-group 203.0.113.1
  no shutdown

interface Ethernet1/3
  no switchport
  ip address 192.168.1.10/30
  ip router ospf 2 area 0.0.0.0
  ip pim sparse-mode
```

```
interface loopback1
 ip address 192.168.2.5/32
 ip router ospf 2 area 0.0.0.0
 ip pim sparse-mode
```

9396-A

注：将vPC用作VTEP时，环回接口的辅助IP将在两个对等体之间使用和共享。两个对等体通过此方式向远程 NVE 对等体表示自己是一个 VTEP。

```
feature ospf
feature pim
feature vn-segment-vlan-based
feature nv overlay

ip pim rp-address 192.168.1.100 group-list 224.0.0.0/4

vlan 1,10,20
vlan 10
 vn-segment 160010
vlan 20
 vn-segment 160020

vpc domain 1
 peer-switch
 peer-keepalive destination 10.122.140.99
 peer-gateway

interface port-channel1
 switchport mode trunk
 spanning-tree port type network
 vpc peer-link

interface port-channel48
 switchport mode trunk
 vpc 48

interface nve1
 mtu 9216
 no shutdown
 source-interface loopback1
 member vni 160010 mcast-group 203.0.113.1
 member vni 160020 mcast-group 203.0.113.1
interface Ethernet1/7
 no switchport
 ip address 192.168.1.2/30
 ip router ospf 1 area 0.0.0.0
 ip pim sparse-mode
 no shutdown

interface loopback1
 ip address 192.168.2.2/32
 ip address 192.168.2.1/32 secondary
 ip router ospf 1 area 0.0.0.0
 ip pim sparse-mode
```

9396-B

注：将vPC用作VTEP时，环回接口的辅助IP将在两个对等体之间使用和共享。两个对等体通过此方式向远程 NVE 对等体表示自己是一个 VTEP。

```
feature ospf
feature pim
feature vn-segment-vlan-based
feature nv overlay

ip pim rp-address 192.168.1.100 group-list 224.0.0.0/4

vlan 1,10,20
vlan 10
  vn-segment 160010
vlan 20
  vn-segment 160020

vpc domain 1
  peer-switch
  peer-keepalive destination 10.122.140.98
  peer-gateway

interface port-channel1
  switchport mode trunk
  spanning-tree port type network
  vpc peer-link

interface port-channel48
  switchport mode trunk
  vpc 48

interface nve1
  mtu 9216
  no shutdown
  source-interface loopback1
  member vni 160010 mcast-group 203.0.113.1
  member vni 160020 mcast-group 203.0.113.1

interface Ethernet1/7
  no switchport
  ip address 192.168.1.6/30
  ip router ospf 1 area 0.0.0.0
  ip pim sparse-mode
  no shutdown

interface loopback1
  ip address 192.168.2.3/32
  ip address 192.168.2.1/32 secondary
  ip router ospf 1 area 0.0.0.0
  ip pim sparse-mode
```

验证

使用本部分可确认配置能否正常运行。

思科 CLI 分析器（仅适用于注册客户）支持某些 show 命令。要查看对 show 命令输出的分析，请使用思科 CLI 分析器。

- **show nve peers** < — 在从重叠两端发起流量之前，您看不到此的任何输出
- **show nve vni**

- show run interface nve1
- show nve internal platform interface detail (仅 9K)
- show mac address-table
- show ip mroute detail

输出示例

这些输出都处于稳定状态。VTEP 对等体已发现彼此，且二者间已在封装和解封两个方向传输流量。

3172-A

```
3172-A# show nve peers
```

Interface	Peer-IP	Peer-State
nve1	192.168.2.1	Up

```
3172-A# show nve vni
```

Interface	VNI	Multicast-group	VNI State
nve1	160010	203.0.113.1	Up
nve1	160020	203.0.113.1	Up

```
3172-A# show run interface nve1
```

```
!Command: show running-config interface nve1
!Time: Sat Apr 25 15:09:13 2015
```

```
version 6.0(2)U5(1)
```

```
interface nve1
 source-interface loopback1
 member vni 160010 mcast-group 203.0.113.1
 member vni 160020 mcast-group 203.0.113.1
 no shutdown
```

```
3172-A# show nve internal platform interface detail
```

```
3172-A# show mac address-table vlan 10
```

```
Legend:
```

```
* - primary entry, G - Gateway MAC, (R) - Routed MAC, O - Overlay MAC
age - seconds since first seen,+ - primary entry using vPC Peer-Link
```

VLAN	MAC Address	Type	age	Secure	NTFY	Ports/SWID.SSID.LID
* 10	0000.1111.1111	dynamic	5030	F	F	Eth1/48
* 10	0000.2222.2222	dynamic	5010	F	F	nve1(192.168.2.1)

```
3172-A# show ip mroute detail
```

```
IP Multicast Routing Table for VRF "default"
```

```
Total number of routes: 3
Total number of (*,G) routes: 1
Total number of (S,G) routes: 1
Total number of (*,G-prefix) routes: 1
```

```
(* , 231.1.1.1/32), uptime: 3w3d, static(1) pim(0) ip(0)
```

```
Stats: 15/1539 [Packets/Bytes], 0.000 bps
```

```
Incoming interface: Ethernet1/3, RPF nbr: 192.168.1.9, uptime: 1w0d
```

```

Outgoing interface list: (count: 1)
  loopback1, uptime: 3w3d, static
(192.168.2.5/32, 231.1.1.1/32), uptime: 3w3d, ip(0) mrib(1) pim(1)
Stats: 142751/9136064 [Packets/Bytes], 34.133 bps
Incoming interface: loopback1, RPF nbr: 192.168.2.5, uptime: 3w3d
Outgoing interface list: (count: 2)
  Ethernet1/3, uptime: 1w0d, pim
  loopback1, uptime: 3w3d, mrib, (RPF)
(*, 232.0.0.0/8), uptime: 3w3d, pim(0) ip(0)
Stats: 0/0 [Packets/Bytes], 0.000 bps
Incoming interface: Null, RPF nbr: 0.0.0.0, uptime: 3w3d
Outgoing interface list: (count: 0)

```

9396-A

```

9396-A# show nve peers
Interface Peer-IP          State LearnType Uptime  Router-Mac
-----
nve1      192.168.2.5             Up     DP           2d20h   n/a

```

```

9396-A# show nve vni
Codes: CP - Control Plane      DP - Data Plane
      UC - Unconfigured        SA - Suppress ARP

```

```

Interface VNI      Multicast-group  State Mode Type [BD/VRF]  Flags
-----
nve1      160010          203.0.113.1     Up   DP   L2 [10]
nve1      160020          203.0.113.1     Up   DP   L2 [20]

```

```

9396-A# show run interface nve1

```

```

!Command: show running-config interface nve1
!Time: Sat Apr 25 15:20:45 2015

```

```

version 7.0(3)I1(1a)

```

```

interface nve1
  mtu 9216
  no shutdown
  source-interface loopback1
  member vni 160010 mcast-group 203.0.113.1
  member vni 160020 mcast-group 203.0.113.1

```

```

9396-A# show nve internal platform interface detail

```

```

Printing details of all NVE Interfaces

```

```

|=====|=====|=====|=====|=====|=====|
|Intf   |State   |PriIP   |SecIP   |Vnis    |Peers  |
|=====|=====|=====|=====|=====|=====|
|nve1   |UP      |192.168.2.2 |192.168.2.1 |2       |1      |
|=====|=====|=====|=====|=====|=====|

```

```

SW_BD/VNIs of interface nve1:

```

```

=====
|=====|=====|=====|=====|=====| |
|Sw BD  |Vni    |State   |Intf   |Type   |Vrf-ID |
|=====|=====|=====|=====|=====|
|10     |160010|UP      |nve1   |DP     |0      |
|20     |160020|UP      |nve1   |DP     |0      |
|=====|=====|=====|=====|=====|

```

```

Peers of interface nve1:

```

=====

peer_ip: 192.168.2.5, peer_id: 1, state: UP MAC-learning: Enabled
active_swbds:
add_pending_swbds:
rem_pending_swbds:

9396-A# show mac address-table vlan 10
Legend:

* - primary entry, G - Gateway MAC, (R) - Routed MAC, O - Overlay MAC
age - seconds since last seen, + - primary entry using vPC Peer-Link,
(T) - True, (F) - False

VLAN	MAC Address	Type	age	Secure	NTFY	Ports
+ 10	0000.1111.1111	dynamic	0	F	F	nve1(192.168.2.5)
* 10	0000.2222.2222	dynamic	0	F	F	Po48
G -	7c0e.ceca.f177	static	-	F	F	sup-eth1(R)

9396-A# show ip mroute detail
IP Multicast Routing Table for VRF "default"

Total number of routes: 4
Total number of (*,G) routes: 1
Total number of (S,G) routes: 2
Total number of (*,G-prefix) routes: 1

(* , 231.1.1.1/32), uptime: 2d21h, nve(1) ip(0) pim(0)
Data Created: No
Stats: 1/64 [Packets/Bytes], 0.000 bps
Stats: Inactive Flow
Incoming interface: Ethernet1/7, RPF nbr: 192.168.1.1
Outgoing interface list: (count: 1)
nve1, uptime: 2d21h, nve

(192.168.2.1/32, 203.0.113.1/32), uptime: 2d21h, nve(0) ip(0) mrib(0) pim(0)
Data Created: Yes
VXLAN Flags
VXLAN Encap
Stats: 1/51 [Packets/Bytes], 0.000 bps
Stats: Inactive Flow
Incoming interface: loopback1, RPF nbr: 192.168.2.1
Outgoing interface list: (count: 0)

(192.168.2.5/32, 203.0.113.1/32), uptime: 2d21h, ip(0) mrib(0) nve(1) pim(0)
Data Created: Yes
Stats: 16474/1370086 [Packets/Bytes], 13.600 bps
Stats: Active Flow
Incoming interface: Ethernet1/7, RPF nbr: 192.168.1.1
Outgoing interface list: (count: 1)
nve1, uptime: 2d21h, nve

(* , 232.0.0.0/8), uptime: 2d21h, pim(0) ip(0)
Data Created: No
Stats: 0/0 [Packets/Bytes], 0.000 bps
Stats: Inactive Flow
Incoming interface: Null, RPF nbr: 0.0.0.0
Outgoing interface list: (count: 0)

9396-A# show vpc
Legend:

(*) - local vPC is down, forwarding via vPC peer-link

vPC domain id : 1
Peer status : peer adjacency formed ok


```

vPC keep-alive status          : peer is alive
Configuration consistency status : success
Per-vlan consistency status    : success
Type-2 consistency status      : success
vPC role                       : secondary
Number of vPCs configured      : 1
Peer Gateway                   : Enabled
Dual-active excluded VLANs     : -
Graceful Consistency Check     : Enabled
Auto-recovery status          : Disabled

```

vPC Peer-link status

```

-----
id   Port   Status Active vlans
--   ----   -----
1    Po1    up     1,10,20

```

vPC status

```

-----
id   Port   Status Consistency Reason           Active vlans
--   ----   -----
48   Po48   up     success    success                    1,10

```

9396-B

9396-B# show nve peers

```

Interface Peer-IP           State LearnType Uptime   Router-Mac
-----
nve1      192.168.2.5             Up      DP          1w0d    n/a

```

9396-B# show nve vni

```

Codes: CP - Control Plane      DP - Data Plane
       UC - Unconfigured       SA - Suppress ARP

```

```

Interface VNI           Multicast-group   State Mode Type [BD/VRF]   Flags
-----
nve1      160010             203.0.113.1      Up   DP   L2 [10]
nve1      160020             203.0.113.1      Up   DP   L2 [20]

```

9396-B# show run interface nve1

```

!Command: show running-config interface nve1
!Time: Sat Apr 25 15:23:25 2015

```

```

version 7.0(3)I1(1b)

```

```

interface nve1
  mtu 9216
  no shutdown
  source-interface loopback1
  member vni 160010 mcast-group 203.0.113.1
  member vni 160020 mcast-group 203.0.113.1

```

9396-B# show nve internal platform interface detail

Printing details of all NVE Interfaces

```

|=====|=====|=====|=====|=====| |
|Intf   |State   |PriIP   |SecIP   |Vnis    |Peers  |
|=====|=====|=====|=====|=====|
|nve1   |UP      |192.168.2.3 |192.168.2.1 |2       |1      |
|=====|=====|=====|=====|=====|

```

SW_BD/VNIs of interface nve1:

```

=====
|=====|=====|=====|=====|=====|=====|
|Sw BD |Vni   |State                               |Intf  |Type |Vrf-ID|
|=====|=====|=====|=====|=====|=====|
|10    |160010|UP                                   |nve1  |DP   |0     |
|20    |160020|UP                                   |nve1  |DP   |0     |
|=====|=====|=====|=====|=====|=====|

```

Peers of interface nve1:

```
=====
```

```

peer_ip: 192.168.2.5, peer_id: 1, state: UP MAC-learning: Enabled
active_swbds:
add_pending_swbds:
rem_pending_swbds:

```

9396-B# show mac address-table vlan 10

Legend:

```

* - primary entry, G - Gateway MAC, (R) - Routed MAC, O - Overlay MAC
age - seconds since last seen,+ - primary entry using vPC Peer-Link,
(T) - True, (F) - False

```

VLAN	MAC Address	Type	age	Secure	NTFY	Ports
* 10	0000.1111.1111	dynamic	0	F	F	nve1(192.168.2.5)
+ 10	0000.2222.2222	dynamic	0	F	F	Po48
G -	58f3.9ca3.64dd	static	-	F	F	sup-eth1(R)

9396-B# show ip mroute detail

IP Multicast Routing Table for VRF "default"

```

Total number of routes: 4
Total number of (*,G) routes: 1
Total number of (S,G) routes: 2
Total number of (*,G-prefix) routes: 1

```

(*, 231.1.1.1/32), uptime: 2w1d, nve(1) ip(0) pim(0)

Data Created: No

VXLAN Flags

VXLAN Decap

VPC Flags

RPF-Source Forwarder

Stats: 1/64 [Packets/Bytes], 0.000 bps

Stats: Inactive Flow

Incoming interface: Ethernet1/7, RPF nbr: 192.168.1.5

Outgoing interface list: (count: 1)

nve1, uptime: 2w1d, nve

(192.168.2.1/32, 203.0.113.1/32), uptime: 2w1d, nve(0) ip(0) mrrib(0) pim(1)

Data Created: Yes

VXLAN Flags

VXLAN Encap

VPC Flags

RPF-Source Forwarder

Stats: 5/511 [Packets/Bytes], 0.000 bps

Stats: Inactive Flow

Incoming interface: loopback1, RPF nbr: 192.168.2.1

Outgoing interface list: (count: 1)

Ethernet1/7, uptime: 1w0d, pim

(192.168.2.5/32, 203.0.113.1/32), uptime: 2w1d, ip(0) mrrib(0) pim(0) nve(1)

Data Created: Yes

VXLAN Flags

VXLAN Decap

VPC Flags

RPF-Source Forwarder

```
Stats: 86621/7241564 [Packets/Bytes], 13.600 bps
Stats: Active Flow
Incoming interface: Ethernet1/7, RPF nbr: 192.168.1.5
Outgoing interface list: (count: 1)
    nve1, uptime: 2w1d, nve
```

```
(* , 232.0.0.0/8), uptime: 2w1d, pim(0) ip(0)
Data Created: No
Stats: 0/0 [Packets/Bytes], 0.000 bps
Stats: Inactive Flow
Incoming interface: Null, RPF nbr: 0.0.0.0
Outgoing interface list: (count: 0)
```

```
9396-B# show vpc
```

```
Legend:
```

```
(*) - local vPC is down, forwarding via vPC peer-link
```

```
vPC domain id          : 1
Peer status            : peer adjacency formed ok
vPC keep-alive status  : peer is alive
Configuration consistency status : success
Per-vlan consistency status : success
Type-2 consistency status : success
vPC role               : primary
Number of vPCs configured : 1
Peer Gateway           : Enabled
Dual-active excluded VLANs : -
Graceful Consistency Check : Enabled
Auto-recovery status   : Disabled
```

```
vPC Peer-link status
```

```
-----
id  Port  Status Active vlans
--  ---  -
1   Po1   up     1,10,20
```

```
vPC status
```

```
-----
id  Port  Status Consistency Reason          Active vlans
--  ---  -
48  Po48  up     success  success          1,10
```

VXLAN 数据包捕获

数据包捕获 (PCAP) 来自上一个拓扑，并包括网络图中所示拓扑的 OSPF hello 数据包、PIM 加入/注册消息和 VXLAN 封装流量。您可以注意到一些 Internet 控制消息协议 (ICMP) 标志，例如“no response”。这是因为 RP 上完成的监控会话的性质而造成的。

监控会话包括接口 Eth4/17-18 和 Eth4/20，因此它会抛出一些 Wireshark。重要的信息是格式和标记。

注意：所有封装数据包 (BUM 或已知单播) 均来自发往远程 VTEP 环回 IP 的 VTEP 环回 IP。这是任何 vPC VTEP 上的辅助环回 IP。

BUM (广播、未知单播、组播) 流量可以发往组播组。

单播流量将发往远程 VTEP 环回 IP。

Filter: vlan Expression.. Clear Apply Save

No.	Time	Source	Destination	Protocol	Length	Info
167	12:58:10.9429990	Ctekrnix_11:11:11	Broadcast	ARP	114	Who has 10.10.10.2? Tell 10.10.10.1
170	12:58:12.9439704	Ctekrnix_11:11:11	Broadcast	ARP	114	Who has 10.10.10.2? Tell 10.10.10.1
180	12:58:16.9429297	Ctekrnix_11:11:11	Broadcast	ARP	114	Who has 10.10.10.2? Tell 10.10.10.1
181	12:58:16.9439166	VisualTe_22:22:22	Tektrnix_11:11:11	ARP	114	10.10.10.2 is at 00:00:22:22:22:22
182	12:58:16.9439174	VisualTe_22:22:22	Tektrnix_11:11:11	ARP	114	10.10.10.2 is at 00:00:22:22:22:22
192	12:58:24.9453125	Ctekrnix_11:11:11	Broadcast	ARP	114	Who has 10.10.10.2? Tell 10.10.10.1
193	12:58:24.9484137	VisualTe_22:22:22	Tektrnix_11:11:11	ARP	114	10.10.10.2 is at 00:00:22:22:22:22
194	12:58:24.9484148	VisualTe_22:22:22	Tektrnix_11:11:11	ARP	114	10.10.10.2 is at 00:00:22:22:22:22
203	12:58:26.9509390	10.10.10.1	10.10.10.2	ICMP	152	Echo (ping) request id=0x4004, seq=256/1, ttl=255 (no response found!)
204	12:58:26.9509404	10.10.10.1	10.10.10.2	ICMP	152	Echo (ping) request id=0x4004, seq=256/1, ttl=255 (reply in 205)
205	12:58:26.9520699	10.10.10.2	10.10.10.1	ICMP	152	Echo (ping) reply id=0x4004, seq=256/1, ttl=255 (request in 204)
206	12:58:26.9520713	10.10.10.2	10.10.10.1	ICMP	152	Echo (ping) reply id=0x4004, seq=256/1, ttl=255
207	12:58:26.9917102	10.10.10.1	10.10.10.2	ICMP	152	Echo (ping) request id=0x4004, seq=512/2, ttl=255 (no response found!)
208	12:58:26.9917116	10.10.10.1	10.10.10.2	ICMP	152	Echo (ping) request id=0x4004, seq=512/2, ttl=255 (reply in 209)
209	12:58:26.9922666	10.10.10.2	10.10.10.1	ICMP	152	Echo (ping) reply id=0x4004, seq=512/2, ttl=255 (request in 208)
210	12:58:26.9922680	10.10.10.2	10.10.10.1	ICMP	152	Echo (ping) reply id=0x4004, seq=512/2, ttl=255
211	12:58:26.9953011	10.10.10.1	10.10.10.2	ICMP	152	Echo (ping) request id=0x4004, seq=768/3, ttl=255 (no response found!)
212	12:58:26.9953025	10.10.10.1	10.10.10.2	ICMP	152	Echo (ping) request id=0x4004, seq=768/3, ttl=255 (reply in 213)
213	12:58:26.9956688	10.10.10.2	10.10.10.1	ICMP	152	Echo (ping) reply id=0x4004, seq=768/3, ttl=255 (request in 212)
214	12:58:26.9956700	10.10.10.2	10.10.10.1	ICMP	152	Echo (ping) reply id=0x4004, seq=768/3, ttl=255
215	12:58:26.9998814	10.10.10.1	10.10.10.2	ICMP	152	Echo (ping) request id=0x4004, seq=1024/4, ttl=255 (no response found!)
216	12:58:26.9998828	10.10.10.1	10.10.10.2	ICMP	152	Echo (ping) request id=0x4004, seq=1024/4, ttl=255 (reply in 217)
217	12:58:27.0002376	10.10.10.2	10.10.10.1	ICMP	152	Echo (ping) reply id=0x4004, seq=1024/4, ttl=255 (request in 216)
218	12:58:27.0002390	10.10.10.2	10.10.10.1	ICMP	152	Echo (ping) reply id=0x4004, seq=1024/4, ttl=255

Frame 209: 152 bytes on wire (1216 bits) 152 bytes captured (1216 bits)

Ethernet II, Src: Cisco_Ob:60:45 (84:78:ac:0b:60:45), Dst: Cisco_fc:5a:01 (4c:00:82:fc:5a:01)

Internet Protocol Version 4, Src: 192.168.2.1 (192.168.2.1), Dst: 192.168.2.5 (192.168.2.5)

User Datagram Protocol, Src Port: 4993 (4993), Dst Port: 4789 (4789)

Source Port: 4993 (4993)

Destination Port: 4789 (4789) **UDP Dest, Port - 4789**

Length: 114

Checksum: 0x0000 (none)

[Stream index: 4]

Virtual extensible Local Area Network

Flags: 0x08

Reserved: 0x000000

VLAN Network Identifier (VNI): 160010 **VNI = 160010**

Reserved: 0

Ethernet II, Src: VisualTe_22:22:22 (00:00:22:22:22:22), Dst: Tektrnix_11:11:11 (00:00:11:11:11:11)

Internet Protocol Version 4, Src: 10.10.10.2 (10.10.10.2), Dst: 10.10.10.1 (10.10.10.1)

Internet Control Message Protocol

Outer Encapsulation

Original Ethernet Frame

故障排除

当前没有故障排除此配置的特定可用资料。

相关信息

- [VXLAN概述 : Cisco Nexus 9000系列交换机](#)
- [技术支持和文档 - Cisco Systems](#)

关于此翻译

思科采用人工翻译与机器翻译相结合的方式将此文档翻译成不同语言，希望全球的用户都能通过各自的语言得到支持性的内容。

请注意：即使是最好的机器翻译，其准确度也不及专业翻译人员的水平。

Cisco Systems, Inc. 对于翻译的准确性不承担任何责任，并建议您总是参考英文原始文档（已提供链接）。