



Log In

- [Supported Browsers, on page 1](#)
- [Log In, on page 1](#)
- [Main Window Controls, on page 2](#)
- [Set Your Home Page, on page 3](#)

Supported Browsers

Crosswork Cloud products are supported on the following browsers:

- Google Chrome 70 or later
- Mozilla Firefox 62 or later

Log In



Note Crosswork Cloud supports the following browsers:

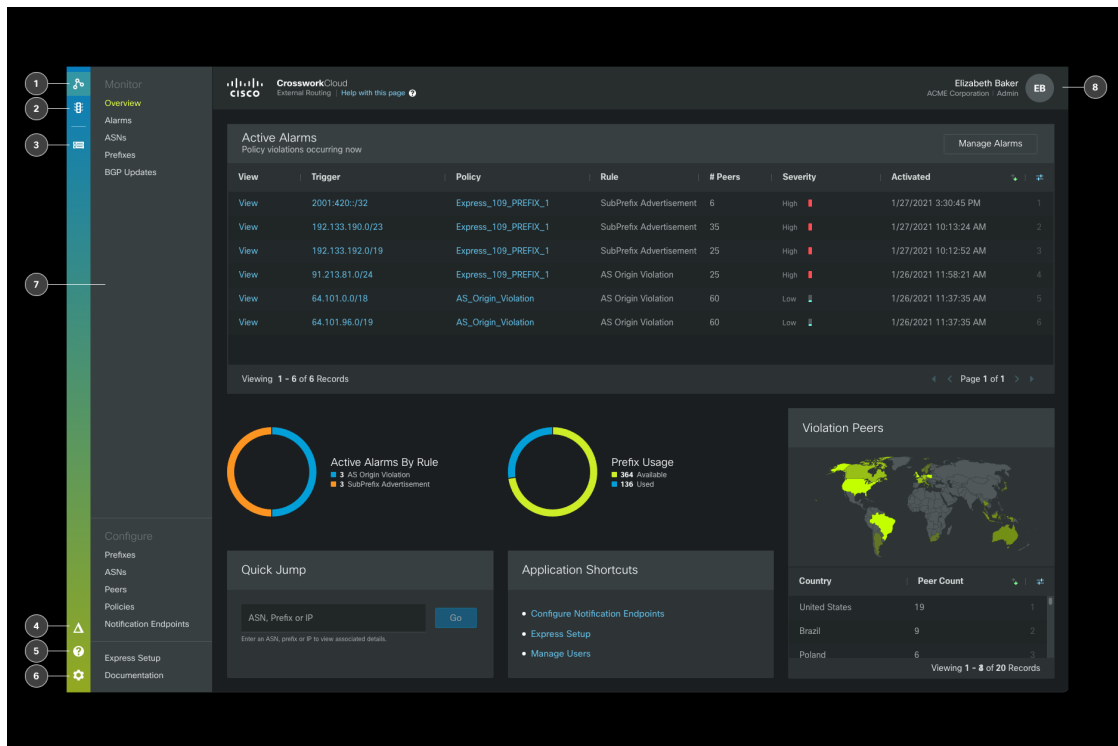
- Google Chrome 70 or later
 - Mozilla Firefox 62 or later
-

To log in to Cisco Crosswork Cloud:

-
- Step 1** In your browser, go to <https://crosswork.cisco.com>.
 - Step 2** From the Crosswork Cloud page, click **Login**.
 - Step 3** Enter your Cisco.com account email address (*not* your Cisco.com user ID) and click **Login**.
 - Step 4** To log out, click on your user initials in the top-right corner, then click **Sign Out**.
If you're inactive for too long, you are automatically logged out and must log in again.
-

Main Window Controls

The main navigation controls in the Crosswork Cloud window are described below.



The following table describes the callouts that are shown above in the Crosswork Cloud home page.



Note The icons that appear depend on the Crosswork Cloud products for which you have a subscription.

Table 1: Crosswork Cloud Home Page Navigation Descriptions

Callout No.	Description
1	Click this icon to access Crosswork Cloud Network Insights features.
2	Click this icon to access Crosswork Cloud Traffic Analysis features. See About Traffic Analysis for more information.
3	Click this icon to access Crosswork Cloud Trust Insights features. See About Trust Insights for more information.
4	Activity Log. See View a List of Actions Performed for more information.
5	Help and Support. See Get Product Help and Support for more information.

Callout No.	Description
6	<p>Click Settings to perform these tasks:</p> <ul style="list-style-type: none"> • Manage Users • Import and Export Configuration Files • Purchase Crosswork Cloud • View Your Subscription and Licenses
7	<p>The menu items that appear in this column depend on the product icon you select. This column typically contains the features organized into the following categories:</p> <ul style="list-style-type: none"> • Monitor • Tools • Configure
8	<p>Click your user initials to view the following options:</p> <ul style="list-style-type: none"> • View in Fullscreen—Allows Crosswork Cloud to expand in fullscreen mode. • My settings—Allows you to view your role and provider. You can also change your timezone and change the user interface theme. See Modify User Settings for more information. • My API Keys—Allows you to generate a new API key or view existing API keys. See Crosswork Cloud APIs for more information. • The organization to which your username belongs. If you belong to more than one organization, you can switch between organizations by selecting the checkbox next to the organization to which you want to switch. • Sign Out—Logs you out of Crosswork Cloud.

Set Your Home Page

You can set a specific Cisco Crosswork Cloud page to be your default home page. When you specify a home page, that page is displayed after you log in to Cisco Crosswork Cloud.

-
- Step 1** Log in to Cisco Crosswork Cloud. See [Log In, on page 1](#) for more information.
- Step 2** In the navigation pane on the left side of the Cisco Crosswork Cloud window, hover your cursor over the menu item for which you want to make your home page.
- Step 3** Click the pin icon that appears.
- When you log out and then log back in, the page you pinned appears.
-

