



## **Layer 2 Configuration Guide, Cisco IOS XE 16 (Cisco ASR 900 Series)**

**First Published:** 2019-08-01

**Last Modified:** 2020-04-03

### **Americas Headquarters**

Cisco Systems, Inc.  
170 West Tasman Drive  
San Jose, CA 95134-1706  
USA  
<http://www.cisco.com>  
Tel: 408 526-4000  
800 553-NETS (6387)  
Fax: 408 527-0883

THE SPECIFICATIONS AND INFORMATION REGARDING THE PRODUCTS IN THIS MANUAL ARE SUBJECT TO CHANGE WITHOUT NOTICE. ALL STATEMENTS, INFORMATION, AND RECOMMENDATIONS IN THIS MANUAL ARE BELIEVED TO BE ACCURATE BUT ARE PRESENTED WITHOUT WARRANTY OF ANY KIND, EXPRESS OR IMPLIED. USERS MUST TAKE FULL RESPONSIBILITY FOR THEIR APPLICATION OF ANY PRODUCTS.

THE SOFTWARE LICENSE AND LIMITED WARRANTY FOR THE ACCOMPANYING PRODUCT ARE SET FORTH IN THE INFORMATION PACKET THAT SHIPPED WITH THE PRODUCT AND ARE INCORPORATED HEREIN BY THIS REFERENCE. IF YOU ARE UNABLE TO LOCATE THE SOFTWARE LICENSE OR LIMITED WARRANTY, CONTACT YOUR CISCO REPRESENTATIVE FOR A COPY.

The Cisco implementation of TCP header compression is an adaptation of a program developed by the University of California, Berkeley (UCB) as part of UCB's public domain version of the UNIX operating system. All rights reserved. Copyright © 1981, Regents of the University of California.

NOTWITHSTANDING ANY OTHER WARRANTY HEREIN, ALL DOCUMENT FILES AND SOFTWARE OF THESE SUPPLIERS ARE PROVIDED "AS IS" WITH ALL FAULTS. CISCO AND THE ABOVE-NAMED SUPPLIERS DISCLAIM ALL WARRANTIES, EXPRESSED OR IMPLIED, INCLUDING, WITHOUT LIMITATION, THOSE OF MERCHANTABILITY, FITNESS FOR A PARTICULAR PURPOSE AND NON-INFRINGEMENT OR ARISING FROM A COURSE OF DEALING, USAGE, OR TRADE PRACTICE.

IN NO EVENT SHALL CISCO OR ITS SUPPLIERS BE LIABLE FOR ANY INDIRECT, SPECIAL, CONSEQUENTIAL, OR INCIDENTAL DAMAGES, INCLUDING, WITHOUT LIMITATION, LOST PROFITS OR LOSS OR DAMAGE TO DATA ARISING OUT OF THE USE OR INABILITY TO USE THIS MANUAL, EVEN IF CISCO OR ITS SUPPLIERS HAVE BEEN ADVISED OF THE POSSIBILITY OF SUCH DAMAGES.

Any Internet Protocol (IP) addresses and phone numbers used in this document are not intended to be actual addresses and phone numbers. Any examples, command display output, network topology diagrams, and other figures included in the document are shown for illustrative purposes only. Any use of actual IP addresses or phone numbers in illustrative content is unintentional and coincidental.

All printed copies and duplicate soft copies of this document are considered uncontrolled. See the current online version for the latest version.

Cisco has more than 200 offices worldwide. Addresses and phone numbers are listed on the Cisco website at [www.cisco.com/go/offices](http://www.cisco.com/go/offices).

Cisco and the Cisco logo are trademarks or registered trademarks of Cisco and/or its affiliates in the U.S. and other countries. To view a list of Cisco trademarks, go to this URL: <http://www.cisco.com/go/trademarks>. Third-party trademarks mentioned are the property of their respective owners. The use of the word partner does not imply a partnership relationship between Cisco and any other company. (1721R)

© 2019–2020 Cisco Systems, Inc. All rights reserved.



## CONTENTS

---

### CHAPTER 1

#### Feature History 1

---

### CHAPTER 2

#### Configuring Ethernet Dataplane Loopback 3

- Information on Ethernet Data Plane Loopback 3
  - QoS Support for Ethernet Data Plane Loopback 3
  - Restrictions for Ethernet Data Plane Loopback 4
    - 4
  - How to Configure Ethernet Data Plane Loopback 5
    - Enabling Ethernet Data Plane Loopback 5
    - Starting an Ethernet Data Plane Loopback Session 6
    - Stopping an Active Session 6
  - Configuration Examples 6
    - Example: Configuring External Loopback 6
    - Example: Configuring Terminal Loopback 7
  - Verifying Ethernet Data Plane Loopback 7
    - Example: Verifying Ethernet Dataplane Loopback 7

---

### CHAPTER 3

#### Configuring Switched Port Analyzer 9

- Local SPAN Session 9
- RSPAN Session 10
- RSPAN over VPLS Network for RSP3 Module 10
- Prerequisites for Configuring Local Span and RSPAN 11
- Restrictions for Local SPAN and RSPAN 12
- Understanding Local SPAN and RSPAN 13
  - Local SPAN Traffic 13
  - RSPAN Traffic 14

Destination Interface	14
Source Interface	15
Traffic Directions	15
Configuring Local SPAN and RSPAN	18
Configuring Sources and Destinations for Local SPAN	18
Removing Sources or Destinations from a Local SPAN Session	19
Configuring RSPAN Source Session	20
Configuring RSPAN Destination Session	21
Removing Sources or Destinations from a RSPAN Session	23
Configuring RSPAN Source Session over VPLS Network	24
Configuring L2VPN VFI in RSPAN Source Session	25
Configuring L2VPN VFI in RSPAN Destination Session	26
Configuring MAC Limit on RSPAN over VPLS Network in RSPAN Destination Session	28
Sample Configurations	28
Configuration Example: Local SPAN	29
Configuration Example: Removing Sources or Destinations from a Local SPAN Session	29
Configuration Example: RSPAN Source	29
Configuration Example: RSPAN Destination	29
Verifying Local SPAN and RSPAN	29
Verifying RSPAN over VPLS Network	30

**CHAPTER 4****Layer 2 Access Control Lists on EVCs 33**

Prerequisites for Layer 2 Access Control Lists on EVCs	33
Restrictions for Layer 2 Access Control Lists on EVCs	33
Information About Layer 2 Access Control Lists on EVCs	34
EVCs	34
Relationship Between ACLs and Ethernet Infrastructure	34
Information About Layer 2 Access Control Lists on EVCs	34
Creating a Layer 2 ACL	34
Applying a Layer 2 ACL to a Service Instance	35
Configuring a Layer 2 ACL with ACEs on a Service Instance	36
Verifying the Presence of a Layer 2 ACL on a Service Instance	38
Configuration Examples for Layer 2 Access Control Lists on EVCs	39
Example Applying a Layer 2 ACL to a Service Instance	39

Example Applying a Layer 2 ACL to Three Service Instances on the Same Interface	40
Verifying the Presence of a Layer 2 ACL on a Service Instance	40
Example Displaying the Details of a Layer 2 ACL on a Service Instance	41
Example Displaying the Details of Configured Layer 2 ACL	41

---

**CHAPTER 5**
**Configuring MAC Address Security on Service Instances and EVC Port Channels 43**

Prerequisites for MAC Address Security on Service Instances and EVC Port Channels	43
Restrictions for MAC Address Limiting on Service Instances Bridge Domains and EVC Port Channels	43
Restrictions for MAC Security on the RSP3 Module	45
Information About MAC Address Security on Service Instances and EVC Port Channels	45
Ethernet Virtual Circuits, Service Instances, and Bridge Domains	45
EVCs on Port Channels	45
MAC Security and MAC Addressing	46
MAC Address Permit List	46
MAC Address Deny List	47
Violation Response Configuration	47
MAC Address Aging Configuration	48
Sticky MAC Address Configurations	49
Aging for Sticky Addresses	49
Transitions	49
MAC Security Enabled on a Service Instance	49
MAC Security Disabled on a Service Instance	50
Service Instance Moved to a New Bridge Domain	50
Service Instance Removed from a Bridge Domain	50
Service Instance Shut Down Due to Violation	50
Interface Service Instance Down Linecard OIR Removed	50
Interface Service Instance Re-activated Linecard OIR Inserted	50
MAC Address Limit Decreased	50
Sticky Addresses Added or Removed on a Service Instance	50
How to Configure MAC Address Limiting on Service Instances Bridge Domains and EVC Port Channels	51
Enabling MAC Security on a Service Instance	51
Enabling MAC Security on an EVC Port Channel	52

Configuring a MAC Address Permit List 53

Configuring a MAC Address Deny List 55

Configuring MAC Address Security on a Service Instance 57

Configuring a MAC Address Violation 59

Configuring MAC Address Aging 60

Configuring a Sticky MAC Address 62

Displaying the MAC Security Status of a Specific Service Instance 63

Displaying the Service Instances with MAC Security Enabled 64

Displaying the Service Instances with MAC Security Enabled on a Specific Bridge Domain 65

Showing the MAC Addresses of All Secured Service Instances 65

Showing the MAC Addresses of a Specific Service Instance 66

Showing the MAC Addresses of All Service Instances on a Specific Bridge Domain 67

Showing the MAC Security Statistics of a Specific Service Instance 67

Showing the MAC Security Statistics of All Service Instances on a Specific Bridge Domain 68

Showing the Last Violation Recorded on Each Service Instance on a Specific Bridge Domain 69

Clearing All Dynamically Learned Secure MAC Addresses on a Service Instance 69

Clearing All Dynamically Learned MAC Addresses on a Bridge Domain 70

Configuration Examples for MAC Address Limiting on Service Instances and Bridge Domains and  
EVC Port Channels 71

Example Enabling MAC Security on a Service Instance 71

Example Enabling MAC Security on an EVC Port Channel 71

Example Configuring a MAC Address Permit List 71

Example Configuring a MAC Address Deny List 72

Example Configuring a MAC Address Security on a Service Instance 72

Example Configuring a MAC Address Violation Response 72

Example Configuring MAC Address Aging 72

Example Configuring a Sticky MAC Address 73

Example Displaying the MAC Addresses on a Specific Secure Service Instance 73

Example Displaying the Last Violation on a Specific Service Instance 73

Example Displaying the MAC Security Status of a Specific Service Instance 73

Example Displaying the MAC Addresses of All Secured Service Instances 73

Example Displaying the MAC Security Statistics of All Service Instances 74

Example: Displaying the MAC Addresses on All Service Instances for a Bridge Domain 74

Example Displaying the Secured Service Instances for a Specific Bridge Domain 74

Displaying Syslog Messages for Different Types of Violations 74

---

**CHAPTER 6**

**Static MAC Address Support on Service Instances 77**

Prerequisites for Static MAC Address Support on Service Instances 77

Restrictions for Static MAC Address Support on Service Instances 77

Information about Static MAC Address Support on Service Instances 78

Configuring a Static MAC Address on a Service Instance 78

    Example for Configuring a Static MAC Address on a Service Instance 79

Verifying Configured Static MAC Addresses on a Service Instance 79

    Example: Verifying Configured Static MAC Addresses on a Service Instance 80

Additional References 80

Feature Information for Static MAC Address Support on Service Instances 81

---

**CHAPTER 7**

**MAC Limiting 83**

Information About Global MAC Address Limiting on Bridge Domain 83

Restrictions and Usage Guidelines for the RSP1 and RSP2 Modules 84

Restrictions for MAC Limiting for RSP3 Module 85

Configuring MAC Limiting 85

    Example of Enabling Per-Bridge-Domain MAC Limiting 86

    Verifying the MAC Limiting on Bridge Domain 86

---

**CHAPTER 8**

**PPPoE on Bridge Domain Interface 87**

Finding Feature Information 87

Prerequisites for PPPoE on BDI 87

Restrictions for PPPoE on BDI 87

How to Enable and Configure PPPoE on BDI 88

    Limiting PPPoE Sessions from a MAC Address 88

    Creating and Configuring a Virtual Template 88

    Creating and Configuring Dialer Interface 89

    Enabling PPPoE on a BDI 89

    Displaying the PPPoE Session Information 90

Configuration Examples for PPPoE on BDI 90

    Specifying Dialer Interface for PPPoE Session 90

    Enabling PPPoE on a BDI—Example 90

Specifying Virtual Template for PPPoE Session—Example 91

Additional References 91

Feature Information for PPPoE on BDI 92





# CHAPTER 1

## Feature History

---

The following table lists the new and modified features supported in the Carrier Ethernet Configuration Guide in Cisco IOS XE 16 releases.

Feature Name	Cisco IOS XE Release





## CHAPTER 2

# Configuring Ethernet Dataplane Loopback

Ethernet data plane loopback provides a means for remotely testing the throughput of an Ethernet port.

- [Information on Ethernet Data Plane Loopback, on page 3](#)
- [Restrictions for Ethernet Data Plane Loopback, on page 4](#)
- [How to Configure Ethernet Data Plane Loopback, on page 5](#)
- [Configuration Examples, on page 6](#)
- [Verifying Ethernet Data Plane Loopback, on page 7](#)

## Information on Ethernet Data Plane Loopback

The Ethernet data plane loopback feature provides a means for remotely testing the throughput of an Ethernet port. You can verify the maximum rate of frame transmission with no frame loss. This feature allows for bidirectional or unidirectional throughput measurement, and on-demand/out-of-service (intrusive) operation during service turn-up. This feature supports two types of Ethernet loopback. RSP3 supports the following types of loopback from Cisco IOS XE Everest 16.5.1 release.

- Facility loopback (external)—Traffic loopback occurs at the Ingress interface. Traffic does not flow into the router for loopback.
- Terminal loopback (internal)—Traffic loopback occurs at the Egress interface. Traffic loopback occurs after the traffic flows into the router to the other interface.

## QoS Support for Ethernet Data Plane Loopback

- Ingress QoS is bypassed in external loopback on service instances.
- Internal loopback sequence is as follows:
  - Ingress QoS
  - Egress QoS (egress port) (both, shaper and policer are supported).
  - Ingress QoS on ingress port and egress QoS on egress port (both, shaper and policer are supported) on the RSP3 module.
  - Ingress QoS on egress port and egress QoS on ingress port on the RSP3 module.
- All port-level and EFP-level QoS is applicable for internal Ethernet data plane loopback.

- For external Ethernet data plane loopback:
  - All port-level and EFP-level QoS is bypassed except for shaper.
  - Port-level shaper cannot be bypassed.

## Restrictions for Ethernet Data Plane Loopback

- Data plane loopback on routed port infrastructure is *not* supported.
- Etype, src-mac, and llc-oui based loopback traffic filtering is *not* supported.
- Port-level QoS is *not* bypassed.
- Port shaper cannot be bypassed in facility loopback.
- Facility and terminal Ethernet data plane loopback (ELB) are *not* supported on dot1ad nni interface.
- Internal loopback sessions configured must be within the 1 GB reserved bandwidth for Cisco ASR 900 Series RSP2 Module.
- A maximum number of 20 facility loopback sessions can be created per system, provided 16 sessions are with Dot1Q and 4 sessions are with Dot1Q and destination MAC address. This scale reduces if SPAN or RSPAN is configured. This scale is supported on the Cisco ASR 900 Series RSP2 module.
- A maximum number of 12 terminal loopback sessions can be created per system, provided 8 sessions are with Dot1Q and 4 sessions are with Dot1Q and destination MAC address. This scale reduces if RSPAN or SADT is configured. This scale is supported on the Cisco ASR 900 Series RSP2 module.
- Only one Ethernet loopback (terminal or facility) session can be active on an EFP at any instance.
- Local SPAN and ELB cannot be enabled on a physical interface at the same time.
- Loopback sessions cannot be initiated on a port configured with SPAN or RSPAN.
- Ethernet loopback is not supported on a range of dot1q tags.
- Ethernet Data Plane Loopback is affected on STP enabled interface.
- Dynamic addition of rewrite ingress tags with default EFP is not supported.
- Dynamic changes at EFP and interface level are not supported when Ethernet Data Plane Loopback is active.
- Egress EFP is not updated for external Ethernet data plane loopback statistics.
- For internal Ethernet data plane loopback ingress and egress interface statistics are not updated on interface, where internal ELB is enabled.
- If traffic is more than 650Mbps and if the packet size is less than a frame size of 64, then BFD and OSPF flaps are expected.

### RSP3 Module

- Etype, VLAN, COS, src-mac, and llc-oui based loopback traffic filtering is *not* supported.

- Port-based ELB is *not* supported. Ethernet loopback sessions are supported only on EFPs and Trunk EFPs on the RSP3 module.
- Internal ELB is *not* supported when the physical interface port state is down.
- Data filtering of loopback is *not* enforced for the traffic coming in the opposite direction.
- Filtering based on specific VLAN is *not* supported. ELB is applicable to all the VLANs configured in EFP on the RSP3 module.
- Random unknown IP packets may be looped back with MAC address swap, but RSP3 module does *not* support IP address swap. If the packet has a destination MAC address and a destination IP address similar to the BDI MAC and IP address, then the packet is punted and is *not* looped back. The L3 packets that must be routed is also *not* looped back. Hence, dscp/prec marking with ELB is *not* supported.
- Traffic to TEF, which is not part of BDI or CFM, is looped back based on filters. But traffic to TEF with VLAN which is part of BDI or CFM, is *not* looped back on the RSP3 module. This is applicable for both types of Ethernet data plane loopback.
- All packets with broadcast or multicast destination MAC is *not* qualified for ELB, hence such packets will *not* be looped back on the RSP3 module.
- Three-level HQOS shaper/policer *not* supported with ELB.
- Dot1Q filter is *not* supported.
- Internal loopback sessions configured must be within the 100 GB reserved recycle bandwidth.
- MAC-ACL *cannot* be bypassed in with facility loopback.
- A maximum number of 20 facility loopback and 12 terminal loopback sessions are supported.

# How to Configure Ethernet Data Plane Loopback

## Enabling Ethernet Data Plane Loopback

```
enable
configure terminal
interface gigabitethernet 0/2/1
service instance 1 ethernet
encapsulation dot1q 100
bridge-domain 120
ethernet loopback permit external
end
```



---

**Note** ELB is supported using a MAC filter for UP-MEP session. If you are starting ELB without the MAC filter, the UP-MEP session will go DOWN.

---

## Starting an Ethernet Data Plane Loopback Session



**Note** To start a loopback for untagged and default EFPs, dot1q and second-dot1q are not needed. Dot1q is *not* applicable to start a loopback session on the RSP3 module.



**Note** By default the session would be running for 300 seconds unless you explicitly specify and automatically stops after the session time expiry.

```
enable
configure terminal
ethernet loopback start local interface gigabitEthernet 0/4/1 service instance 10 external
  dot1q 10 cos 1 destination mac-address 0000.0000.0001 timeout none
end
```

This is an intrusive loopback and the packets matched with the service will not be able to pass through.  
Continue? (yes/[no]): yes

Dot1q and COS-based filtering is not supported on the RSP3 module.

```
enable
configure terminal
ethernet loopback start local interface gigabitEthernet 0/4/1 service instance 10 external
  destination mac-address 0000.0000.0001 timeout none
end
```

## Stopping an Active Session

Use the **ethernet loopback stop** command to stop an active session on an interface or to stop all sessions based on the session id.

```
Router# ethernet loopback stop local interface gigabitEthernet 0/4/1 id 1
```

## Configuration Examples

### Example: Configuring External Loopback

This example shows how to configure external (facility) loopback.

```
Router(config)# interface gigabitEthernet 0/4/1
Router(config-if)# service instance 1 ethernet
Router(config-if-srv)# encapsulation dot1q 120
Router(config-if-srv)# bridge-domain 120
Router(config-if-srv)# ethernet loopback permit external
```

This example shows external (facility) loopback on the Gigabit Ethernet 0/4/1 interface:

```
interface GigabitEthernet0/4/1
no ip address
```

```

negotiation auto
service instance 10 ethernet
  encapsulation dot1q 10
  rewrite ingress tag pop 1 symmetric
  bridge-domain 10
  ethernet loopback permit external ===? For facility loopback
!
end

```

This example below shows how to start external (facility) loopback on the router. A warning message is displayed. Type **yes** to continue.

```

Router# ethernet loopback start local interface gigabitEthernet 0/4/1 service instance 10
external dot1q 10 cos 1
destination mac-address 0000.0000.0001 timeout none

```

```

This is an intrusive loopback and the packets matched with the service will not be able
to pass through.
Continue? (yes/[no]): yes

```



**Note** Dot1q and COS-based filtering is not supported on the RSP3 module.

## Example: Configuring Terminal Loopback

This example shows how to configure internal (terminal) loopback.

```

Router(config)# interface gigabitEthernet 0/0/0
Router(config-if)# service instance 1 ethernet
Router(config-if-srv)# encapsulation dot1q 120
Router(config-if-srv)# bridge-domain 120
Router(config-if-srv)# ethernet loopback permit internal

```

This example shows internal (terminal) loopback on Gigabit Ethernet 0/0/0 interface:

```

interface TenGigabitEthernet0/0/0
  no ip address
  service instance 10 ethernet
    encapsulation dot1q 10
    rewrite ingress tag pop 1 symmetric
    bridge-domain 10
  ethernet loopback permit internal
!
end

```

## Verifying Ethernet Data Plane Loopback

### Example: Verifying Ethernet Dataplane Loopback

Use the **show ethernet loopback {active | permitted} [interface interface number]** command.

- The following example displays the loopback capabilities per interface. The output shows internal (terminal) loopback has been permitted on Ten Gigabit Ethernet 0/0/0 interface and external (facility) loopback has been permitted on Gigabit Ethernet 0/4/1 interface.

```
Router# show ethernet loopback permitted
```

```
-----
Interface                               SrvcInst Direction
Dot1q/Dot1ad(s)                         Second-Dot1q(s)
-----
Te0/0/0                                 10                Internal
10
Gi0/4/1                                 10                External
10
```

- This example shows all active sessions on the router.

```
Router# show ethernet loopback active
```

```
=====
Loopback Session ID      : 1
Interface                : GigabitEthernet0/4/1
Service Instance         : 10
Direction                : External
Time out(sec)           : none
Status                   : on
Start time               : 10:31:09.539 IST Mon Aug 26 2013
Time left                 : N/A
Dot1q/Dot1ad(s)         : 10
Second-dot1q(s)         :
Source Mac Address       : Any
Destination Mac Address  : 0000.0000.0001
Ether Type               : Any
Class of service         : 1
Llc-oui                  : Any

Total Active Session(s)  : 1
Total Internal Session(s) : 0
Total External Session(s) : 1
```

- This example shows how to stop the sessions on the router.

```
Router# ethernet loopback stop local interface GigabitEthernet
0/4/1 id 1
```





## CHAPTER 3

# Configuring Switched Port Analyzer

This document describes how to configure local Switched Port Analyzer (SPAN) and remote SPAN (RSPAN).

- [Local SPAN Session, on page 9](#)
- [RSPAN Session, on page 10](#)
- [RSPAN over VPLS Network for RSP3 Module, on page 10](#)
- [Prerequisites for Configuring Local Span and RSPAN, on page 11](#)
- [Restrictions for Local SPAN and RSPAN, on page 12](#)
- [Understanding Local SPAN and RSPAN, on page 13](#)
- [Configuring Local SPAN and RSPAN, on page 18](#)
- [Configuring RSPAN Source Session over VPLS Network, on page 24](#)
- [Configuring MAC Limit on RSPAN over VPLS Network in RSPAN Destination Session, on page 28](#)
- [Sample Configurations, on page 28](#)
- [Verifying Local SPAN and RSPAN, on page 29](#)
- [Verifying RSPAN over VPLS Network, on page 30](#)

## Local SPAN Session

A local Switched Port Analyzer (SPAN) session is an association of a destination interface with a set of source interfaces. You configure local SPAN sessions using parameters that specify the type of network traffic to monitor. Local SPAN sessions allow you to monitor traffic on one or more interfaces and to send either ingress traffic, egress traffic, or both to one destination interface.

Local SPAN sessions do not interfere with the normal operation of the switch. You can enable or disable SPAN sessions with command-line interface (CLI) commands. When enabled, a local SPAN session might become active or inactive based on various events or actions, and this would be indicated by a syslog message. The **show monitor session span *session number*** command displays the operational status of a SPAN session.

A local SPAN session remains inactive after system power-up until the destination interface is operational.

The following configuration guidelines apply when configuring local SPAN:

- When enabled, local SPAN uses any previously entered configuration.
- Use the **no monitor session *session number*** command with no other parameters to clear the local SPAN session number.

## RSPAN Session

An RSPAN source session is an association of source ports or Vlans across your network with an RSPAN Vlan. The RSPAN Vlan/BD on the router is the destination RSPAN session.

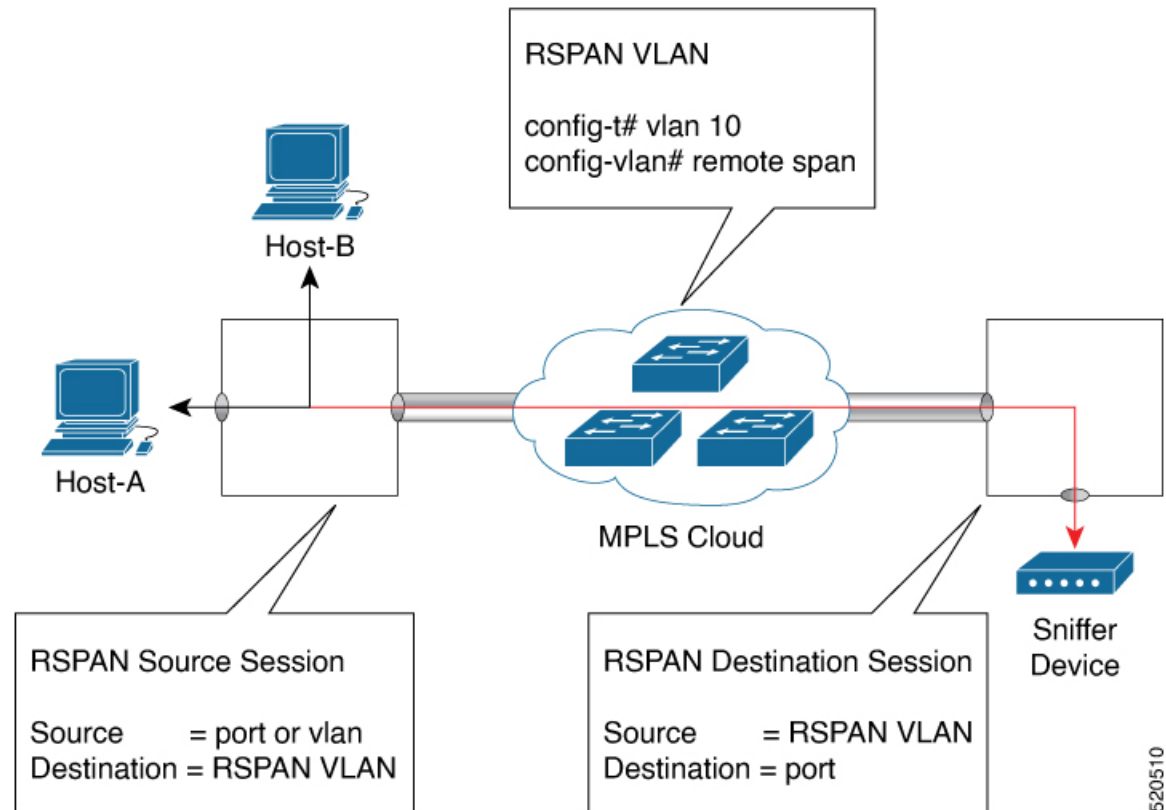
## RSPAN over VPLS Network for RSP3 Module

*Table 1: Feature History*

Feature Name	Release	Description
RSPAN over VPLS Pseudowire Network	Cisco IOS XE Amsterdam 17.3.1	This feature allows the traffic mirroring destination port to be configured as a pseudowire rather than a physical port. This feature lets the designated traffic on the source port to be mirrored over the pseudowire to a remote location. This feature is supported on the Cisco RSP3 module.

RSPAN allows remote traffic monitoring, where the source and destination routers are connected by VPLS pseudowire network. The SPAN Source and Destination routers are connected through a VPLS Pseudowire connected with the RSPAN VLAN over an MPLS or IP network. The VPLS pseudowire is dedicated only to the RSPAN traffic. All the mirrored traffic from the source port is carried over the VPLS Pseudowire connected with the RSPAN VLAN towards the destination port. On the destination router, a port belonging to the RSPAN VLAN or EVC BD is connected to the sniffer device.

Figure 1: RSPAN Traffic over VPLS Network on the Cisco RSP3 module



## Prerequisites for Configuring Local Span and RSPAN

### Local Span

- Use a network analyzer to monitor interfaces.

### RSPAN

- Before configuring RSPAN sessions, you must first configure:
  1. Source interface
  2. Destination BD
- RSPAN VLAN must be configured as a dedicated EFP on RSPAN source and RSPAN Destination nodes and should not be part of TEFP. All Layer 2 devices in the network must be aware of the VLAN.

# Restrictions for Local SPAN and RSPAN

## SPAN

- Local SPAN is only supported on physical ports.
- SPAN monitoring of port-channel interfaces or port-channel member-links is *not* supported.
- Combined Egress local SPAN bandwidth supported on Cisco ASR 900 Series RSP2 module is 1 GB.
- Local SPAN is not supported on logical interfaces such as VLANs or EFPs.
- Up to 14 active local SPAN sessions (ingress and egress) are supported. The router supports up to 14 ingress sessions and up to 12 egress sessions.
- Only one local SPAN destination interface is supported. You *cannot* configure a local SPAN destination interface to receive ingress traffic.
- Outgoing Cisco Discovery Protocol (CDP), Bridge Protocol Data Unit (BPDU), IS-IS, and OSPF packets are not replicated.
- When enabled, local SPAN uses any previously entered configuration.
- When you specify source interfaces and do not specify a traffic direction (**Tx**, **Rx**, or **both**), **both** is used by default.
- The SPAN port does not work for Rx traffic on the pseudowire for interfaces, when the SPAN port is in different ASIC of the RSP2 module.
- Local SPAN destinations never participate in any spanning tree instance. Local SPAN includes BPDUs in the monitored traffic, so any BPDUs seen on the local SPAN destination are from the local SPAN source.
- Local SPAN sessions with overlapping sets of local SPAN source interfaces or VLANs are *not* supported.
- SPAN configuration on different interface slots on the ASR 903 RSP2 module is *not* supported. For examples, SPAN is *not* supported across interfaces IM0 and IM1 or IM3 or IM5, but supported with interfaces IM0 and IM2 or IM4.
- Configuring SPAN and netflow on the same interface is not supported. If SPAN and netflow have been mistakenly configured on the same interface, reset the interface. Use the **default interface** command to set the interface back to its default values, and then configure SPAN.

The following code shows how to reset the interface:

```
router(config)#default interface GigabitEthernet0/0/0
router(config)#interface GigabitEthernet0/0/0
router(config)#ip address 192.168.16.1 255.255.255.0
router(config)#negotiation auto
router(config)#cdp enable
```

For the SPAN configuration, see.

## Restrictions for SPAN RSP3 module

- Destination port of SPAN session, *cannot* be used for other network data traffic flow.
- Multiple destinations for same SPAN session is *not* supported on the Cisco ASR 900 Series RSP3 module.

- Jumbo sized packets and bad CRC packets are *not* spanned.
- Combined Egress local SPAN bandwidth supported is about 100GB depending on other traffic on the internal recycle interface.
- Port-channel *cannot* be used as the SPAN destination.

### RSPAN

- RSPAN VLAN/BD is *not* used for data traffic.
- The maximum number of supported RSPAN sessions are 14.
- Only one source port is supported per RSPAN.
- Source ranges (vlan range or port range) is *not* supported.
- VLAN filtering is not supported.
- If two RSPAN configurations sessions are configured on two RSPAN BDs associated to the same Trunk EFP, the traffic from the first session flows to the second session after it is configured.
- RSPAN destination configuration for Layer2 pseudowire is *not* supported.
- If RSPAN BD is associated with a VPLS pseudowire, the traffic flows through the VPLS pseudowire.
- If RSPAN source and destination are separated by pseudowire, then the RSPAN VLAN details must be updated to both RSPAN source switch and destination switch. The pseudowire should also be dedicated for RSPAN traffic.
- BDI should not be created when that BD is part of RSPAN.
- Monitor session should be created only after RSPAN BD is created.
- Do not have RSPAN bridge domain as part of RSPAN source interface.

### Restrictions for RSPAN over VPLS Network RSP3 module

- RSPAN is *not* supported on the Cisco ASR 900 Series RSP3 module until Cisco IOS XE Release 17.2.1.

# Understanding Local SPAN and RSPAN

## Local SPAN Traffic

Network traffic, including multicast, can be monitored using SPAN. Multicast packet monitoring is enabled by default. In some SPAN configurations, multiple copies of the same source packet are sent to the SPAN destination interface. For example, a bidirectional (both ingress and egress) SPAN session is configured for sources a1 and a2 to a destination interface d1. If a packet enters the switch through a1 and gets switched to a2, both incoming and outgoing packets are sent to destination interface d1; both packets would be the same (unless a Layer-3 rewrite had occurred, in which case the packets would be different).

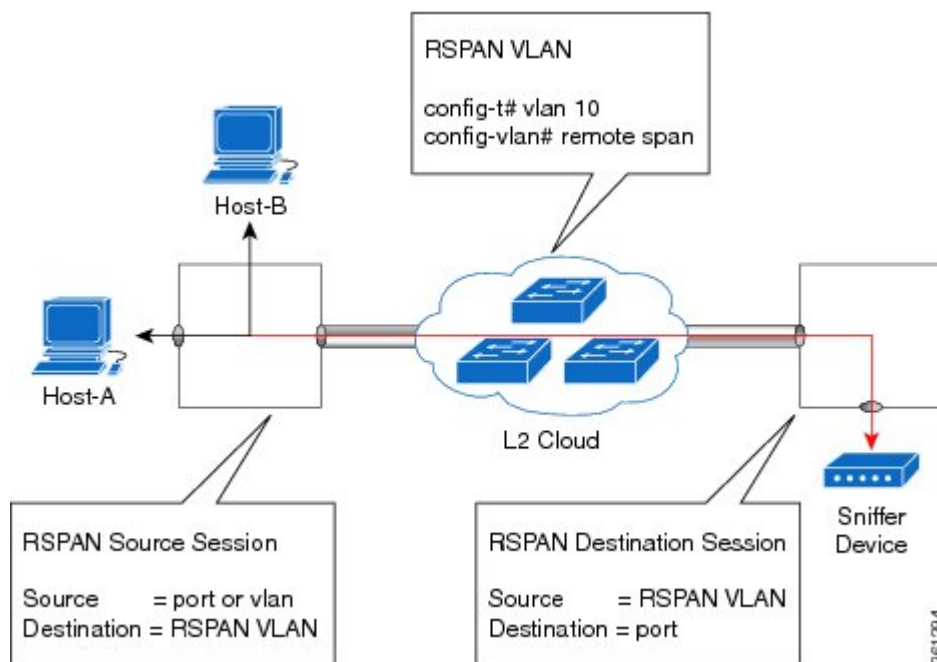
## RSPAN Traffic

RSPAN supports source ports and source Vlans in the source switch and destination as RSPAN Vlan/BD.

The figure below shows the original traffic from the Host A to Host B via the source ports or Vlans on Host A. The source ports or Vlans of Host A is mirrored to Host B using RSPAN Vlan 10. The traffic for each RSPAN session is carried over a user-specified RSPAN Vlan that is dedicated for that RSPAN session in all participating devices. The traffic from the source ports or Vlans are mirrored into the RSPAN Vlan and forwarded over Trunk or the EVC bridge domain (BD) ports carrying the RSPAN Vlan to a destination session monitoring the RSPAN Vlan.

Each RSPAN source must have either ports or Vlans as RSPAN sources. On RSPAN destination, the RSPAN Vlan is monitored and mirrored to the destination physical port connected to the sniffer device.

**Figure 2: RSPAN Traffic**



RSPAN allows remote monitoring of traffic where the source and destination switches are connected by L2VPN networks

The RSPAN source is either ports or Vlans as in a traditional RSPAN. However, the SPAN source and destination devices are connected through a L2 pseudowire associated with the RSPAN Vlan over an MPLS/IP network. The L2 pseudowire is dedicated for only RSPAN traffic. The mirrored traffic from the source port or Vlan is carried over the pseudowire associated with the RSPAN Vlan towards the destination side. On the destination side, a port belonging to the RSPAN Vlan or EVC BD is connected to sniffer device.

## Destination Interface

A destination interface, also called a monitor interface, is a switched interface to which SPAN or RSPAN sends packets for analysis. You can have only one destination interface for SPAN sessions.

An interface configured as a destination interface cannot be configured as a source interface. Specifying a trunk interface as a SPAN or RSPAN destination interface stops trunking on the interface.

## Source Interface

A source interface is an interface monitored for network traffic analysis. An interface configured as a destination interface cannot be configured as a source interface.

## Traffic Directions

Ingress SPAN (Rx) copies network traffic received by the source interfaces for analysis at the destination interface. Egress SPAN (Tx) copies network traffic transmitted from the source interfaces to the destination interface. Specifying the configuration option (both) copies network traffic received and transmitted by the source interfaces to the destination interface.

The following table lists the supported traffic types for RSPAN.

**Table 2: RSPAN Traffic**

Source	Ingress Mirror (Rx)	Egress Mirror (Tx)	Both
Layer2 or Layer3	Supported	Supported	Supported
VLAN	Supported	Not supported	Not supported
EFP	Not supported	Not supported	Not supported
Pseudowire	Not supported	Not supported	Not supported

The following table lists the supported **rewrite** traffic for RSPAN on the EFP, Trunk with the associated RSPAN bridge domains.

**Table 3: Rewrite Traffic for RSPAN BD**

Rewrite Operations	Source	EFP/Trunk associated with RSPAN BD
no-rewrite	Pop1, Pop2, Push1	Only Pop1

The following tables lists the format of the spanned packets at the destination port for both Ingress and Egress RSPAN. The tables lists the formats of untagged, single, and double tagged source packets for EFPs under source port configured with **rewrite** operations (no-rewrite, pop1, pop2 and push1).

**Table 4: Destination Port Ingress and Egress Spanned Traffic for EVC RSPAN BD**

	Ingress Traffic	Egress Traffic
<b>(Untagged Traffic) - Source port rewrite</b>	<b>RSPAN Vlan (BD) rewrite pop1 tag symmetric</b>	<b>RSPAN Vlan (BD) rewrite pop1 tag symmetric</b>
no-rewrite	RSPAN BD tag + packet	RSPAN BD tag + packet
pop1 tag	NA	NA
pop2 tag	NA	NA
push1 tag	NA	NA

	Ingress Traffic	Egress Traffic
<b>(Single Traffic)-Source port rewrite</b>	<b>RSPAN Vlan (BD) rewrite pop1 tag symmetric</b>	<b>RSPAN Vlan (BD) rewrite pop1 tag symmetric</b>
no-rewrite	RSPAN BD tag + source-outer-tag + packet	RSPAN BD tag + source-outer-tag + packet
pop1 tag		NA
pop2 tag		NA
push1 tag		RSPAN BD tag + source-outer-tag + packet
<b>(Double traffic) - Source port rewrite</b>	<b>RSPAN Vlan (BD) rewrite pop1 tag symmetric</b>	<b>RSPAN Vlan (BD) rewrite pop1 tag symmetric</b>
no-rewrite	RSPAN BD tag + source-outer-tag + source-inner-tag + packet	RSPAN BD tag + Source-inner-tag + packet
pop1 tag		
pop2 tag		
push1 tag		

**Table 5: Destination Port Ingress and Egress Spanned Traffic for TEP RSPAN BD**

	Ingress Traffic	Egress Traffic
<b>(Untagged traffic)- Source port rewrite</b>	<b>RSPAN Vlan (BD) rewrite pop1 tag symmetric</b>	<b>RSPAN Vlan (BD) rewrite pop1 tag symmetric</b>
no-rewrite	RSPAN BD tag + packet	RSPAN BD tag + packet
pop1 tag	NA	NA
pop2 tag	NA	NA
push1 tag	NA	NA
<b>(Single traffic)-Source port rewrite</b>	<b>RSPAN Vlan (BD) rewrite pop1 tag symmetric</b>	<b>RSPAN Vlan (BD) rewrite pop1 tag symmetric</b>
no-rewrite	RSPAN BD tag + source-outertag + packet	RSPAN BD tag + source-outertag + packet
pop1 tag		NA
pop2 tag		NA
push1 tag		RSPAN BD tag + source-outertag + packet
<b>(Double traffic) -Source port rewrite</b>	<b>RSPAN Vlan (BD) rewrite pop1 tag symmetric</b>	<b>RSPAN Vlan (BD) rewrite pop1 tag symmetric</b>



	Ingress Traffic	Egress Traffic
no-rewrite	RSPAN BD tag + source-outertag + source-innertag+ packet	RSPAN BD tag + source-outertag + source-innertag + packet
pop1 tag		
pop2 tag		
push1 tag		

**Table 6: Destination Port Ingress and Egress Spanned Traffic for RSPAN BD with VPLS Pseudowire**

	Ingress Traffic	Egress Traffic
<b>(Untagged traffic) - Source port rewrite</b>	<b>RSPAN Vlan (BD) rewrite pop1 tag symmetric</b>	<b>RSPAN Vlan (BD) rewrite pop1 tag symmetric</b>
no-rewrite	RSPAN BD tag + packet	RSPAN BD tag + packet
pop1 tag	NA	NA
pop2 tag	NA	NA
push1 tag	NA	NA
<b>(Single traffic)- Source port rewrite</b>	<b>RSPAN Vlan (BD) rewrite pop1 tag symmetric</b>	<b>RSPAN Vlan (BD) rewrite pop1 tag symmetric</b>
no-rewrite	RSPAN BD tag + source-outer-tag + packet	RSPAN BD tag + source-outer-tag + packet
pop1 tag		
pop2 tag	NA	NA
push1 tag	RSPAN BD tag + source-outer-tag + packet	RSPAN BD tag + source-outer-tag + packet
<b>(Double traffic)-Source port rewrite</b>	<b>RSPAN Vlan (BD) rewrite pop1 tag symmetric</b>	<b>RSPAN Vlan (BD) rewrite pop1 tag symmetric</b>
no-rewrite	RSPAN BD tag + source-outer-tag + source-inner-tag + packet	RSPAN BD tag + source-outer-tag + source-inner-tag + packet
pop1 tag		
pop2 tag		
push1 tag		

# Configuring Local SPAN and RSPAN

## Configuring Sources and Destinations for Local SPAN

To configure sources and destinations for a SPAN session:

### SUMMARY STEPS

1. **configure terminal**
2. **monitor session** {*session\_number*} **type local**
3. **source interface** *interface\_type slot/subslot/port* [, | - | **rx** | **tx** | **both**]
4. **destination interface** *interface\_type slot/subslot/port* [, | -]
5. **no shutdown**
6. **End**

### DETAILED STEPS

---

#### Step 1 **configure terminal**

**Example:**

```
Router# configure terminal
Enters global configuration mode.
```

#### Step 2 **monitor session** {*session\_number*} **type local**

**Example:**

```
Router(config)# monitor session 1 type local
Specifies the local SPAN session number and enters the local monitoring configuration mode.
```

- *session\_number*—Indicates the monitor session. The valid range is 1 through 14.

#### Step 3 **source interface** *interface\_type slot/subslot/port* [, | - | **rx** | **tx** | **both**]

**Example:**

```
Router(config-mon-local)# source interface gigabitethernet 0/2/1 rx
Specifies the source interface and the traffic direction:
```

- *interface\_type*—Specifies the Gigabit Ethernet or Ten Gigabit Ethernet interface.
  - *slot/subslot/port*—The location of the interface.
- “,”—List of interfaces
- “-”—Range of interfaces
- rx—Ingress local SPAN
- tx—Egress local SPAN
- both

**Step 4** **destination interface** *interface\_type slot/subslot/port* [, | -]

**Example:**

```
Router(config-mon-local)# destination interface gigabitethernet 0/2/4
```

Specifies the destination interface that sends both ingress and egress local spanned traffic from source port to the prober or sniffer.

- *interface\_type*—Specifies the Gigabit Ethernet or Ten Gigabit Ethernet interface.
  - *slot/subslot/port*—The location of the interface.
- “,”—List of interfaces
- “-”—Range of interfaces

**Step 5** **no shutdown**

**Example:**

```
Router(config-mon-local)# no shutdown
```

Enables the local SPAN session.

**Step 6** **End**

---

## Removing Sources or Destinations from a Local SPAN Session

To remove sources or destinations from a local SPAN session, use the following commands beginning in EXEC mode:

---

**Step 1** **enable**

**Example:**

```
Router> enable
```

Enables privileged EXEC mode.

- Enter your password if prompted.

**Step 2** **configure terminal**

**Example:**

```
Router# configure terminal
```

Enters global configuration mode.

**Step 3** **no monitor session** *session-number*

**Example:**

```
Router(config)# no monitor session 2
```

Clears existing SPAN configuration for a session.

---

# Configuring RSPAN Source Session

To configure the source for a RSPAN session:

## SUMMARY STEPS

1. **enable**
2. **configure terminal**
3. **monitor session** *RSPAN\_source\_session\_number* **type rspan-source**
4. **Filter vlan** *vlan id*
5. **source** {*single\_interface* slot/subslot/port| *single\_vlan* [**rx** | **tx** | **both**]}
6. **destination remote vlan** *rspan\_vlan\_ID*
7. **no shutdown**
8. **end**

## DETAILED STEPS

### Step 1 enable

**Example:**

```
Router> enable
```

Enables privileged EXEC mode.

- Enter your password if prompted.

### Step 2 configure terminal

**Example:**

```
Router# configure terminal
```

Enters global configuration mode.

### Step 3 monitor session *RSPAN\_source\_session\_number* type rspan-source

**Example:**

```
Router(config)# monitor session 1  
type rspan-source
```

Configures an RSPAN source session number and enters RSPAN source session configuration mode for the session.

- *RSPAN\_source\_session\_number*—Valid sessions are 1 to 14.
- **rspan-source**—Enters the RSPAN source-session configuration mode.

### Step 4 Filter vlan *vlan id*

**Example:**

```
filter vlan 100
```

Applies the VLAN access map to the VLAN ID; valid values are from 1 to 4094.

**Step 5** `source {single_interface slot/subslot/port| single_vlan [rx | tx | both]`

**Example:**

```
Router(config-mon-rspan-src)# source interface gigabitethernet 0/2/1 tx
```

Specifies the RSPAN session number, the source interfaces and the traffic direction to be monitored.

- *single\_interface*—Specifies the Gigabit Ethernet or Ten Gigabit Ethernet interface.
  - *slot/subslot/port*—The location of the interface.
- *single\_vlan*
  - Specifies the single VLAN.
- **both**
  - (Optional) Monitors the received and the transmitted traffic.
- **rx**
  - (Optional) Monitors the received traffic only.
- **tx**—(Optional) Monitors the transmitted traffic only.

**Step 6** `destination remote vlan rspan_vlan_ID`

**Example:**

```
Router(config-mon-rspan-src)# destination remote vlan2
```

Associates the RSPAN source session number session number with the RSPAN VLAN.

- *rspan\_vlan\_ID*—Specifies the Vlan ID.

**Note** *rspan\_vlan\_ID* is the RSPAN BD that is configured under the EFP or port which carries the RSPANd traffic.

**Step 7** `no shutdown`

**Example:**

```
Router(config-mon-rspan-src)# no shutdown
```

Enables RSPAN source.

**Step 8** `end`

**Example:**

```
Router(config-mon-rspan-src)# end
```

Exists the configuration.

## Configuring RSPAN Destination Session

To configure the destination for a RSPAN session for remote Vlan:

**SUMMARY STEPS**

1. **enable**
2. **configure terminal**
3. **monitor session** *RSPAN\_destination\_session\_number* **type rspan-destination**
4. **source remote vlan** *rspan\_vlan\_ID*
5. **destination** *{single\_interface slot/subslot/port}*
6. **no shutdown**
7. **end**

**DETAILED STEPS****Step 1**    **enable****Example:**

```
Router> enable
```

Enables privileged EXEC mode.

- Enter your password if prompted.

**Step 2**    **configure terminal****Example:**

```
Router# configure terminal
```

Enters global configuration mode.

**Step 3**    **monitor session** *RSPAN\_destination\_session\_number* **type rspan-destination****Example:**

```
Router(config)# monitor session 1 type rspan-destination
```

Configures a RSPAN session.

- *RSPAN\_destination\_session\_number*—Valid sessions are 1 to 80.
- **rspan-destination**—Enters the RSPAN destination-session configuration mode.

**Step 4**    **source remote vlan** *rspan\_vlan\_ID***Example:**

```
Router(config-mon-rspan-dst)# source remote vlan2
```

Associates the RSPAN destination session number RSPAN VLAN.

- *rspan\_vlan\_ID*—Specifies the Vlan ID

**Step 5**    **destination** *{single\_interface slot/subslot/port}***Example:**

```
Router(config-mon-rspan-dst)# destination interface gigabitethernet 0/0/1
```

Associates the RSPAN destination session number with the destination port.

- *single\_interface* —Specifies the Gigabit Ethernet or Ten Gigabit Ethernet interface.
- *slot/subslot/port*—The location of the interface.

**Step 6**     **no shutdown**

**Example:**

```
Router(config-mon-rspan-dst)# no shutdown
```

Restarts the interface

**Step 7**     **end**

**Example:**

```
Router(config-mon-rspan-dst)# end
```

Exists the configuration

---

## Removing Sources or Destinations from a RSPAN Session

To remove source or destination from a RSPAN session, delete and recreate the RSPAN session. The following are the steps:

### SUMMARY STEPS

1. **enable**
2. **configure terminal**
3. **no monitor session** *session number*
4. **end**

### DETAILED STEPS

---

**Step 1**     **enable**

**Example:**

```
Router> enable
```

Enables privileged EXEC mode.

- Enter your password if prompted.

**Step 2**     **configure terminal**

**Example:**

```
Router# configure terminal
```

Enters global configuration mode.

**Step 3**    **no monitor session** *session number*

**Example:**

```
Router(config)# no monitor session 1
```

Exits monitor session.

**Step 4**    **end**

**Example:**

```
Router(config-mon-rspan-src)# end
```

Exits configuration mode.

---

## Configuring RSPAN Source Session over VPLS Network

To configure the source for a RSPAN over VPLS Network:

### SUMMARY STEPS

1. **enable**
2. **configure terminal**
3. **monitor session** *RSPAN\_source\_session\_number* **type rspan-source**
4. **no shutdown**
5. **end**

### DETAILED STEPS

**Step 1**    **enable**

**Example:**

```
Router> enable
```

Enables privileged EXEC mode.

- Enter your password if prompted.

**Step 2**    **configure terminal**

**Example:**

```
Router# configure terminal
```

Enters global configuration mode.

**Step 3**    **monitor session** *RSPAN\_source\_session\_number* **type rspan-source**

**Example:**



```
Router(config)#source int g0/0/1 [tx |rx|both]
Router(config)#destination remote VLAN 1000
```

Configures an RSPAN source session number and enters RSPAN over VPLS Network source session configuration mode for the session.

**Step 4**    **no shutdown**

**Example:**

```
Router(config-mon-rspan-src)# no shutdown
```

Enables RSPAN over VPLS Network source.

**Step 5**    **end**

**Example:**

```
Router(config-mon-rspan-src)# end
```

Exits the configuration.

**Note**    You must ensure that the BDI number should match RSPAN destination remote VLAN number.

---

## Configuring L2VPN VFI in RSPAN Source Session

To configure the source for a RSPAN over VPLS Network using L2VPN Virtual Forwarding Instance (VFI):

### SUMMARY STEPS

1. **enable**
2. **configure terminal**
3. **l2vpn vfi context VPLS 1000**
4. **source interface***[tx |rx|both]*
5. **no shutdown**
6. **end**

### DETAILED STEPS

---

**Step 1**    **enable**

**Example:**

```
Router> enable
```

Enables privileged EXEC mode.

- Enter your password if prompted.

**Step 2**    **configure terminal**

**Example:**

```
Router# configure terminal
```

**Step 3** **l2vpn vfi context VPLS 1000****Example:**

```
l2vpn vfi context VPLS1000
  vpn id 1000
  member 1.1.1.1 encapsulation mpls
```

```
source int g0/0/1 [tx |rx|both]
```

**Step 4** **source interface[tx |rx|both]****Example:**

```
l2vpn vfi context VPLS1000
  vpn id 1000
  member 1.1.1.1 encapsulation mpls
source int g0/0/1 [tx |rx|both]
```

**Step 5** **no shutdown****Example:**

```
Router(config-mon-rspan-sour)# no shutdown
```

Enables RSPAN over VPLS Network at source.

**Step 6** **end****Example:**

```
Router(config-mon-rspan-sour)# end
```

Exits the configuration.

---

## Configuring L2VPN VFI in RSPAN Destination Session

To configure the destination for a RSPAN over VPLS Network using L2VPN Virtual Forwarding Instance (VFI):

**SUMMARY STEPS**

1. **enable**
2. **configure terminal**
3. **l2vpn vfi context VPLS1000**
4. **destination interface[tx |rx|both]**
5. **no shutdown**
6. **end**

## DETAILED STEPS

---

**Step 1**    **enable****Example:**

```
Router> enable
```

Enables privileged EXEC mode.

- Enter your password if prompted.

**Step 2**    **configure terminal****Example:**

```
Router# configure terminal
```

**Step 3**    **l2vpn vfi context VPLS1000****Example:**

```
l2vpn vfi context VPLS1000
vpn id 1000
member 2.2.2.2 encapsulation mpls

bridge-domain 1000
member GigabitEthernet0/1/0 service-instance 1
member vfi VPLS1000
```

**Step 4**    **destination interface[tx /rx/both]****Example:**

```
l2vpn vfi context VPLS1000
vpn id 1000
member 2.2.2.2 encapsulation mpls

destination int g0/0/1 [tx |rx|both]
```

**Step 5**    **no shutdown****Example:**

```
Router(config-mon-rspan-dest)# no shutdown
```

Enables RSPAN over VPLS Network at destination.

**Step 6**    **end****Example:**

```
Router(config-mon-rspan-dest)# end
```

Exits the configuration.

---

# Configuring MAC Limit on RSPAN over VPLS Network in RSPAN Destination Session

To configure the MAC Limit 0 on RSPAN BD on destination router:

## SUMMARY STEPS

1. **enable**
2. **configure terminal**
3. **mac-address-table-limit** *bdomain <bd-id> maximum 0 action limit*

## DETAILED STEPS

### Step 1 enable

#### Example:

```
Router> enable
```

Enables privileged EXEC mode.

- Enter your password if prompted.

### Step 2 configure terminal

#### Example:

```
Router# configure terminal
```

### Step 3 mac-address-table-limit *bdomain <bd-id> maximum 0 action limit*

#### Example:

```
router#show bridge-domain 1000
Bridge-domain 1000 (2 ports in all)
State: UP
Mac learning: Enabled
Aging-Timer: 300 second(s)

Maximum address limit: 0
  GigabitEthernet0/1/0 service instance 1
    vfi VPLS1000 neighbor 2.2.2.2 1000
```

## Sample Configurations

The following sections contain configuration examples for SPAN and RSPAN.

## Configuration Example: Local SPAN

The following example shows how to configure local SPAN session 8 to monitor bidirectional traffic from source interface Gigabit Ethernet interface to destination:

```
Router(config)# monitor session 8 type local
Router(config)# source interface gigabitEthernet 0/0/10
Router(config)# destination interface gigabitEthernet 0/0/3
Router(config)# no shut
```

## Configuration Example: Removing Sources or Destinations from a Local SPAN Session

This following example shows how to remove a local SPAN session:

```
Router(config)# no monitor session 8
```

## Configuration Example: RSPAN Source

The following example shows how RSPAN session 2 to monitor bidirectional traffic from source interface Gigabit Ethernet 0/0/1:

```
Router(config)# monitor session 2 type RSPAN-source
Router(config-mon-RSPAN-src)# source interface gigabitEthernet0/0/1 [tx |rx|both]
Router(config-mon-RSPAN-src)# destination remote VLAN 100
Router(config-mon-RSPAN-src)# no shutdown
Router(config-mon-RSPAN-src)# end
```

The following example shows how RSPAN session 3 to monitor bidirectional traffic from source Vlan 200:

```
Router(config)# monitor session 3 type RSPAN-source
Router(config-mon-RSPAN-src)# filter vlan 100
Router(config-mon-RSPAN-src)# source interface Te0/0/23 rx
Router(config-mon-RSPAN-src)# destination remote VLAN 200
Router(config-mon-RSPAN-src)# no shutdown
Router(config-mon-RSPAN-src)# end
```

## Configuration Example: RSPAN Destination

The following example shows how to configure interface Gigabit Ethernet 0/0/1 as the destination for RSPAN session 2:

```
Router(config)# monitor session 2 type RSPAN-destination
Router(config-mon-RSPAN-dst)# source remote VLAN 100
Router(config-mon-RSPAN-dst)# destination interface gigabitEthernet 0/0/1
Router(config-mon-RSPAN-dst)# end
```

## Verifying Local SPAN and RSPAN

Use the **show monitor session** command to view the sessions configured.

- The following example shows the Local SPAN source session with Tx as source:

```
Router# show monitor session 8
Session 8
-----
Type : Local Session
Status : Admin Enabled
Source Ports :
TX Only : Gi0/0/10
Destination Ports : Gi0/0/3
MTU : 1464
Dest RSPAN VLAN : 100
```

- The following example shows the RSPAN source session with Gigabit Ethernet interface 0/0/1 as source:

```
Router# show monitor session 2
Session 2
-----
Type : Remote Source Session
Status : Admin Enabled
Source Ports :
  Both : Gi0/0/1
MTU : 1464
```

- The following example shows the RSPAN source session with Vlan 20 as source:

```
Router# show monitor session 3
Session 3
-----
Type : Remote Source Session
Status : Admin Enabled
Source VLANs :
  RX Only : 20
MTU : 1464
```

- The following example shows the RSPAN destination session with Gigabit Ethernet interface 0/0/1 as destination:

```
Router# show monitor session 2
Session 2
-----
Type : Remote Destination Session
Status : Admin Enabled
Destination Ports : Gi0/0/1
MTU : 1464
Source RSPAN VLAN : 100
```

## Verifying RSPAN over VPLS Network

Use the **show monitor session** command to view the sessions configured.

The following example shows the RSPAN over VPLS Source session

```
Router(config)#show mpls l2transport vc
```

Local intf	Local circuit	Dest address	VC ID	Status
-----	-----	-----	-----	-----

```
VFI VPLS1000 vfi 1.1.1.1 1000 UP
```

The following example shows the RSPAN over VPLS Destination session

```
Router(config)#show mpls l2transport vc
```

Local intf	Local circuit	Dest address	VC ID	Status
VFI VPLS1000	vfi	2.2.2.2	1000	UP







## CHAPTER 4

# Layer 2 Access Control Lists on EVCs

The ability to filter packets in a modular and scalable way is important for both network security and network management. Access Control Lists (ACLs) provide the capability to filter packets at a fine granularity. In Metro Ethernet networks, ACLs are directly applied on Ethernet virtual circuits (EVCs).

Layer 2 Access Control Lists on EVCs is a security feature that allows packet filtering based on MAC addresses. This module describes how to implement ACLs on EVCs.

- [Prerequisites for Layer 2 Access Control Lists on EVCs, on page 33](#)
- [Restrictions for Layer 2 Access Control Lists on EVCs, on page 33](#)
- [Information About Layer 2 Access Control Lists on EVCs, on page 34](#)
- [Information About Layer 2 Access Control Lists on EVCs, on page 34](#)
- [Configuration Examples for Layer 2 Access Control Lists on EVCs, on page 39](#)

## Prerequisites for Layer 2 Access Control Lists on EVCs

- Knowledge of how service instances must be configured.
- Knowledge of extended MAC ACLs and how they must be configured.

## Restrictions for Layer 2 Access Control Lists on EVCs

- A maximum of 512 access control entries (ACEs) are allowed for a given ACL, with the limitation that it does not exceed the maximum team entries.
- L2 ACL is supported over port channel with Normal EFPs.
- Egress L2 ACL on EVC is *not* supported.
- L2 ACLs are *not* supported on Trunk EFP.
- L2 ACL counters are *not* supported.
- Layer2 ACL can be applied on layer 2 frame without IPv4 or IPv6 header as layer 2 ACL does not support filter on IPv4 or IPv6 traffic.
- Layer 2 ACLs function inbound only. The Layer 2 ACLs are *not* supported at physical interface level.

# Information About Layer 2 Access Control Lists on EVCs

## EVCs

An Ethernet virtual circuit (EVC) as defined by the Metro Ethernet Forum is a port-level point-to-point or multipoint-to-multipoint Layer 2 circuit. It is an end-to-end representation of a single instance of a Layer 2 service being offered by a provider to a customer. An EVC contains the different parameters on which the service is being offered. A service instance is the instantiation of an EVC on a specified port.

Service instances are configured under a port channel. The traffic carried by the service instance is load balanced across member links. Service instances under a port channel are grouped and each group is associated with one member link. Ingress traffic for a single EVC can arrive on any member of the bundle. All egress traffic for a service instance uses only one of the member links. Load balancing is achieved by grouping service instances and assigning them to a member link.

Ethernet virtual connection services (EVCS) uses the EVCs and service instances to provide Layer 2 switched Ethernet services. EVC status can be used by a customer edge (CE) device either to find an alternative path to the service provider network or in some cases, to fall back to a backup path over Ethernet or over another alternative service such as ATM.

For information about the Metro Ethernet Forum standards, see the Standards table in the “Additional References” section.

## Relationship Between ACLs and Ethernet Infrastructure

The following points capture the relationship between ACLs and Ethernet Infrastructure (EI):

- ACLs can be directly applied on an EVC using the command-line interface (CLI). An ACL is applied to a service instance, which is the instantiation of an EVC on a given port.
- One ACL can be applied to more than one service instance at any time.
- One service instance can have one ACL at most applied to it at any time. If a Layer 2 ACL is applied to a service instance that already has a Layer 2 ACL, the new one replaces the old one.
- Only named ACLs can be applied to service instances. The command syntax ACLs is retained; the **mac access-list extended** command is used to create an ACL.
- The **show ethernet service instance id id interface type number detail** command can be used to provide details about ACLs on service instances.

# Information About Layer 2 Access Control Lists on EVCs

## Creating a Layer 2 ACL

Perform this task to create a Layer 2 ACL with a single ACE.

**SUMMARY STEPS**

1. **enable**
2. **configure terminal**
3. **mac access-list extended** *name*
4. **permit** {{*src-mac mask* | **any**} {*dest-mac mask* | **any**} [*protocol* [**vlan** *vlan*] [*cos value*]]}

**DETAILED STEPS**

	<b>Command or Action</b>	<b>Purpose</b>
<b>Step 1</b>	<b>enable</b> <b>Example:</b> Device> enable	Enables privileged EXEC mode. <ul style="list-style-type: none"> <li>• Enter your password if prompted.</li> </ul>
<b>Step 2</b>	<b>configure terminal</b> <b>Example:</b> Device# configure terminal	Enters global configuration mode.
<b>Step 3</b>	<b>mac access-list extended</b> <i>name</i> <b>Example:</b> Device(config)# mac access-list extended test-12-acl	Defines an extended MAC ACL and enters mac access list control configuration mode.
<b>Step 4</b>	<b>permit</b> {{ <i>src-mac mask</i>   <b>any</b> } { <i>dest-mac mask</i>   <b>any</b> } [ <i>protocol</i> [ <b>vlan</b> <i>vlan</i> ] [ <i>cos value</i> ]]} <b>Example:</b> Device(config-ext-macl)# permit 00aa.00bb.00cc 0.0.0 any	Allows forwarding of Layer 2 traffic if the conditions are matched. Creates an ACE for the ACL.

**Applying a Layer 2 ACL to a Service Instance**

Perform this task to apply a Layer 2 ACL to a service instance. Note that packet filtering takes place only after the ACL has been created and applied to the service instance.

**Before you begin**

Before applying an ACL to a service instance, you must create it using the **mac access-list extended** command. See the “Creating a Layer 2 ACL” section.

**SUMMARY STEPS**

1. **enable**
2. **configure terminal**
3. **interface** *type number*
4. **service instance** *id* ethernet

5. **encapsulation dot1q** *vlan-id*
6. **mac access-group** *access-list-name* in
7. **bridge -domain** *bridge-id* in

## DETAILED STEPS

	Command or Action	Purpose
<b>Step 1</b>	<b>enable</b> <b>Example:</b> Device> enable	Enables privileged EXEC mode. <ul style="list-style-type: none"> <li>• Enter your password if prompted.</li> </ul>
<b>Step 2</b>	<b>configure terminal</b> <b>Example:</b> Device# configure terminal	Enters global configuration mode.
<b>Step 3</b>	<b>interface</b> <i>type number</i> <b>Example:</b> Device(config)# interface gigabitethernet 1/0/0	Specifies the type and location of the interface to configure, where: <ul style="list-style-type: none"> <li>• <i>type</i> --Specifies the type of the interface.</li> <li>• <i>number</i> --Specifies the location of the interface.</li> </ul>
<b>Step 4</b>	<b>service instance</b> <i>id</i> ethernet <b>Example:</b> Device(config-if)# service instance 100 ethernet	Configures an Ethernet service instance on an interface and enters Ethernet service configuration mode.
<b>Step 5</b>	<b>encapsulation dot1q</b> <i>vlan-id</i> <b>Example:</b> Device(config-if-srv)# encapsulation dot1q 100	Defines the matching criteria to be used in order to map ingress dot1q frames on an interface to the appropriate service instance.
<b>Step 6</b>	<b>mac access-group</b> <i>access-list-name</i> in <b>Example:</b> Device(config-if-srv)# mac access-group test-12-acl in	Applies a MAC ACL to control incoming traffic on the interface.
<b>Step 7</b>	<b>bridge -domain</b> <i>bridge-id</i> in <b>Example:</b> Device(config-if-srv)# bridge-domain 100	Configure the bridge domain ID.

## Configuring a Layer 2 ACL with ACEs on a Service Instance

Perform this task to configure the same ACL with three ACEs and stop all other traffic on a service instance.

## SUMMARY STEPS

1. **enable**
2. **configure terminal**
3. **mac access-list extended** *name*
4. **permit** {*src-mac mask* | **any**} {*dest-mac mask* | **any**}
5. **permit** {*src-mac mask* | **any**} {*dest-mac mask* | **any**}
6. **permit** {*src-mac mask* | **any**} {*dest-mac mask*} | **any**}
7. **deny any any**
8. **exit**
9. **interface** *type number*
10. **service instance** *id ethernet*
11. **encapsulation dot1q** *vlan-id*
12. **mac access-group** *access-list-name in*

## DETAILED STEPS

	Command or Action	Purpose
Step 1	<b>enable</b> <b>Example:</b>  Device> enable	Enables privileged EXEC mode.  • Enter your password if prompted.
Step 2	<b>configure terminal</b> <b>Example:</b>  Device# configure terminal	Enters global configuration mode.
Step 3	<b>mac access-list extended</b> <i>name</i> <b>Example:</b>  Device(config)# mac access list extended test-12-acl	Defines an extended MAC ACL and enters mac access control list configuration mode.
Step 4	<b>permit</b> { <i>src-mac mask</i>   <b>any</b> } { <i>dest-mac mask</i>   <b>any</b> } <b>Example:</b>  Device(config-ext-macl)# permit 00aa.bbcc.ddea 0.0.0 any	Allows forwarding of Layer 2 traffic if the conditions are matched. This creates an ACE for the ACL.
Step 5	<b>permit</b> { <i>src-mac mask</i>   <b>any</b> } { <i>dest-mac mask</i>   <b>any</b> } <b>Example:</b>  Device(config-ext-macl)# permit 00aa.bbcc.ddeb 0.0.0 any	Allows forwarding of Layer 2 traffic if the conditions are matched. This creates an ACE for the ACL.
Step 6	<b>permit</b> { <i>src-mac mask</i>   <b>any</b> } { <i>dest-mac mask</i> }   <b>any</b> } <b>Example:</b>	Allows forwarding of Layer 2 traffic if the conditions are matched. This creates an ACE for the ACL.

	Command or Action	Purpose
	Device(config-ext-macl)# permit 00aa.bbccc.ddec 0.0.0 any	
<b>Step 7</b>	<b>deny any any</b> <b>Example:</b> Device(config-ext-macl)# deny any any	Prevents forwarding of Layer 2 traffic except for the allowed ACEs.
<b>Step 8</b>	<b>exit</b> <b>Example:</b> Device(config-ext-macl)# exit	Exits the current command mode and returns to global configuration mode.
<b>Step 9</b>	<b>interface type number</b> <b>Example:</b> Device(config)# interface gigabitethernet 1/0/0	Specifies the interface.
<b>Step 10</b>	<b>service instance id ethernet</b> <b>Example:</b> Device(config-if)# service instance 200 ethernet	Configures an Ethernet service instance on an interface and enters service instance configuration mode.
<b>Step 11</b>	<b>encapsulation dot1q vlan-id</b> <b>Example:</b> Device(config-if-srv)# encapsulation dot1q 100	Defines the matching criteria to be used to map ingress dot1q frames on an interface to the appropriate service instance.
<b>Step 12</b>	<b>mac access-group access-list-name in</b> <b>Example:</b> Device(config-if-srv)# mac access-group test-12-acl in	Applies a MAC ACL to control incoming traffic on the interface.

## Verifying the Presence of a Layer 2 ACL on a Service Instance

Perform this task to verify that a Layer 2 ACL is present on an EVC. This verification task can be used after an ACL has been configured to confirm its presence.

### SUMMARY STEPS

1. enable
2. show ethernet service instance id id interface type number detail

## DETAILED STEPS

	Command or Action	Purpose
Step 1	<b>enable</b> <b>Example:</b> Device> enable	Enables privileged EXEC mode. <ul style="list-style-type: none"> <li>• Enter your password if prompted.</li> </ul>
Step 2	<b>show ethernet service instance id id interface type number detail</b> <b>Example:</b> Device# show ethernet service instance id 100 interface gigabitethernet 3/0/1 detail	Displays detailed information about Ethernet customer service instances.

## Configuration Examples for Layer 2 Access Control Lists on EVCs

### Example Applying a Layer 2 ACL to a Service Instance

The following example shows how to apply a Layer 2 ACL called mac-20-acl to a service instance. The ACL has five permitted ACEs and all other traffic is not allowed.

```
enable
configure terminal
 mac access-list extended mac-20-acl

 permit 00aa.bbccc.adec 0.0.0 any

 permit 00aa.bbccc.bdec 0.0.0 any

 permit 00aa.bbccc.cdec 0.0.0 any

 permit 00aa.bbccc.edec 0.0.0 any

 permit 00aa.bbccc.fdec 0.0.0 any

 deny any any
 exit
 interface gigabitethernet 10/0/0
  service instance 100 ethernet
  encapsulation dot1q 100
  mac access-group mac-20-acl in
```

## Example Applying a Layer 2 ACL to Three Service Instances on the Same Interface

The following example shows how to apply a Layer 2 ACL called mac-07-acl to three service instances on the same interface:

```
enable
configure terminal
mac access-list extended mac-07-acl

permit 00aa.bbcc.adec 0.0.0 any

permit 00aa.bbcc.bdec 0.0.0 any

permit 00aa.bbcc.cdec 0.0.0 any

deny any any
exit
interface gigabitethernet 10/0/0
service instance 100 ethernet
encapsulation dot1q 100
mac access-group mac-07-acl in
service instance 101 ethernet
encapsulation dot1q 101
mac access-group mac-07-acl in
service instance 102 ethernet
encapsulation dot1q 102
mac access-group mac-07-acl in
```

## Verifying the Presence of a Layer 2 ACL on a Service Instance

Perform this task to verify that a Layer 2 ACL is present on an EVC. This verification task can be used after an ACL has been configured to confirm its presence.

### SUMMARY STEPS

1. **enable**
2. **show ethernet service instance id id interface type number detail**

### DETAILED STEPS

	Command or Action	Purpose
Step 1	<b>enable</b> <b>Example:</b> Device> enable	Enables privileged EXEC mode. <ul style="list-style-type: none"> <li>• Enter your password if prompted.</li> </ul>
Step 2	<b>show ethernet service instance id id interface type number detail</b> <b>Example:</b>	Displays detailed information about Ethernet customer service instances.



	Command or Action	Purpose
	Device# show ethernet service instance id 100 interface gigabitethernet 3/0/1 detail	

## Example Displaying the Details of a Layer 2 ACL on a Service Instance

The following sample output displays the details of a Layer 2 ACL called test-acl on a service instance.

```
Device# show ethernet service instance id 100 interface gig3/0/1 detail
Service Instance ID: 100
L2 ACL (inbound): test-acl
Associated Interface: Gig3/0/1
Associated EVC: test
L2protocol drop
CEVlans:
Interface Dot1q Tunnel Ethertype: 0x8100
State: Up
L2 ACL permit count: 10255
L2 ACL deny count: 53
```

The table below describes the significant fields in the output.

**Table 7: show ethernet service instance Field Descriptions**

Field	Description
Service Instance ID	Displays the service instance ID.
L2 ACL (inbound):	Displays the ACL name.
Associated Interface:	Displays the interface details of the service instance.
Associated EVC:	Displays the EVC with which the service instance is associated.
CEVlans:	Displays details of the associated VLAN ID.
State:	Displays whether the service instance is in an up or down state.
L2 ACL permit count:	Displays the number of packet frames allowed to pass on the service instance by the ACL.
L2 ACL deny count	Displays the number of packet frames not permitted to pass on the service instance by the ACL.

## Example Displaying the Details of Configured Layer 2 ACL

The following sample output displays the details of a configured Layer 2 ACL.

```
Device# show access-lists
Extended IP access list ip-acl
10 permit ip any any
Extended MAC access list mac-acl
permit any any vlan 10
```

**Example Displaying the Details of Configured Layer 2 ACL**

```
Device#  
Device#sh access-lists mac-acl  
Extended MAC access list mac-acl  
permit any any vlan 10
```



## CHAPTER 5

# Configuring MAC Address Security on Service Instances and EVC Port Channels

---

The MAC Address Security on Service Instances and EVC Port Channels feature addresses port security with service instances by providing the capability to control and filter MAC address learning behavior at the granularity of a per-service instance. When a violation requires a shutdown, only the customer who is assigned to a given service instance is affected and--not all customers who are using the port. MAC address limiting is a type of MAC security and is also referred to as a MAC security component or element.

- [Prerequisites for MAC Address Security on Service Instances and EVC Port Channels, on page 43](#)
- [Restrictions for MAC Address Limiting on Service Instances Bridge Domains and EVC Port Channels, on page 43](#)
- [Restrictions for MAC Security on the RSP3 Module, on page 45](#)
- [Information About MAC Address Security on Service Instances and EVC Port Channels, on page 45](#)
- [How to Configure MAC Address Limiting on Service Instances Bridge Domains and EVC Port Channels, on page 51](#)
- [Configuration Examples for MAC Address Limiting on Service Instances and Bridge Domains and EVC Port Channels, on page 71](#)

## Prerequisites for MAC Address Security on Service Instances and EVC Port Channels

- An understanding of service instances and bridge domains.
- An understanding of the concepts of MAC address limiting and how it is used for MAC security.
- An understanding of how port channels and EtherChannels work in a network.

## Restrictions for MAC Address Limiting on Service Instances Bridge Domains and EVC Port Channels

- MAC address limiting for service instances and bridge domains is configured under a service instance and is permitted only after the service instance is configured under a bridge domain. If a service instance

is removed from a bridge domain, all the MAC address limiting commands under it are also removed. If a bridge domain is removed from a service instance, all the MAC address limiting commands are also removed.

- The MAC Address on RSP1 port channel overlaps with the interface MAC address and the traffic is dropped from ports 1 to 8 when an interface module is placed on slot 4.
- MAC Address does not support automatic error-disable recovery functionality.
- System wide, the following limits apply to the total configured allowed list and learned MAC addresses:
  - Total number of MAC addresses supported under MAC Security is limited to 64K (65536).
  - Total number of secure EFPs in the system is limited to 64K (65536).
  - Total number of MAC addresses supported under MAC Security, per EFP, is limited to 1K (1024).
  - Total number of EFPs per bridge domain 4000.
  - Total number of bridge domains per system 16000.
- You can configure or remove the various MAC security elements irrespective of whether MAC security is enabled on the EFP. However, these configurations become operational only after MAC security is enabled.
- It is recommended that you enable MAC address security feature on all the EFPs in a bridge-domain.
- When you enable the MAC address security for EVC bridge domain feature, existing MAC address table entries on the EFP are removed.
- When you enable the MAC address security, the traffic is forwarded once the device learns the MAC address.
- The MAC address security for EVC bridge domain feature can be configured on an EFP only if the EFP is a member of a bridge domain.
- you can configure non-MAC address security on an EVC and enable MAC address security on a different EVC, which are in the same bridge-domain.
- If you disassociate the EFP from the BD, the MAC security feature is completely removed.
- For port-channel, this configuration is propagated to all member links in the port-channel. Consistent with the already implemented bridge domain EVC port-channel functionality, packets on a secured EFP are received on any member link, but all the egress packets are sent out to one of the selected member links.
- System does not permit addition of multicast/broadcast MAC address as a permit address. However, addition of multicast/broadcast MAC address is allowed in deny address configuration to verify such invalid packets.
- When EVC with the same EFP or service instance is created between ports 1 and 2 and MAC address m1 is configured as permit address (allowed list) on port1, the same MAC address can be configured as deny address (blocked list) on port2 and vice versa.

## Restrictions for MAC Security on the RSP3 Module

- Maximum MAC scale supported on the RSP3 module is 200000 entries.
- Maximum number of secure EFPs supported is 255.
- Maximum number of secure MAC entries is 16K.
- Maximum number of MAC addresses supported per BD is 64K.
- Maximum number of secure MAC entries per BD is 10K.
- MAC security is supported only on Layer2 EFPs.
- MAC security on local connect and cross-connect is *not* supported.
- MAC security is *not* supported on trunk EFP.

## Information About MAC Address Security on Service Instances and EVC Port Channels

### Ethernet Virtual Circuits, Service Instances, and Bridge Domains

An Ethernet virtual circuit (EVC) as defined by the Metro Ethernet Forum is a port-level point-to-point or multipoint-to-multipoint Layer 2 circuit. It is an end-to-end representation of a single instance of a Layer 2 service being offered by a provider to a customer. An EVC embodies the different parameters on which the service is being offered. A service instance is the instantiation of an EVC on a given port.

Support for Ethernet bridging is an important Layer 2 service that is offered on a router as part of an EVC. Ethernet bridging enables the association of a bridge domain with a service instance.

For information about the Metro Ethernet Forum standards, see the “Standards” table in the “Additional References” section.

### EVCs on Port Channels

An EtherChannel bundles individual Ethernet links into a single logical link that provides the aggregate bandwidth of up to eight physical links. The Ethernet Virtual Connection Services (EVCS) EtherChannel feature provides support for EtherChannels on service instances.



---

**Note** The MAC Address Security on EVC Port Channel services is supported only on bridge domains over Ethernet and is not supported on xconnect services.

---

EVCS uses the concepts of EVCs and service instances.

Load balancing is done on an Ethernet flow point (EFP) basis where a number of EFPs exclusively pass traffic through member links.

## MAC Security and MAC Addressing

MAC security is enabled on a service instance by configuring the **mac security** command. Various MAC security elements can be configured or removed regardless of whether the **mac security** command is presently configured, but these configurations become operational only when the **mac security** command is applied.

In this document, the term “secured service instance” is used to describe a service instance on which MAC security is configured. The MAC addresses on a service instance on which MAC security is configured are referred to as “secured MAC addresses.” Secured MAC addresses can be either statically configured (as a permit list) or dynamically learned.

## MAC Address Permit List

A permit list is a set of MAC addresses that are permitted on a service instance. Permitted addresses permanently configured into the MAC address table of the service instance.

On a service instance that is a member of a bridge domain, the operator is permitted to configure one or more permitted MAC addresses.

For each permitted address, eligibility tests are performed and after the address passes these tests, it is either:

- Programmed into the MAC address table of the bridge domain, if MAC security is enabled on the service instance or,
- Stored in an area of memory referred to as “MAC table cache” if MAC security is not enabled on the service instance. When MAC security is enabled, the addresses from the MAC table cache are added to the MAC address table as secure addresses.

The eligibility tests performed when a user tries to add a MAC address to the permit list on a service instance are as follows:

- If the address is already a denied address on the service instance, the configuration is rejected with an appropriate error message.
- If the acceptance of this address would increase the secure address count on the service instance beyond the maximum number allowed, an attempt is made to make room by removing an existing address from the MAC address table. The only candidate for removal is a dynamically learned address on the service instance. If sufficient room cannot be made, the configuration is rejected. If the acceptance of this address would increase the secure address count on the bridge domain beyond the maximum number allowed, an attempt is made to make room by removing an existing address from the MAC address table. The only candidate for removal is a dynamically learned address on the service instance. If room cannot be made, the configuration is rejected.




---

**Note** Default maximum address is '1' for a service instance.

---

- If the address is already permitted on another service instance in the same bridge domain, one of the following actions occur:
  - If the conflicting service instance has MAC security configured, the configuration is rejected with an appropriate error message.

- If the conflicting service instance does not have MAC security configured, the configuration is accepted silently. (If the operator attempts to enable MAC security on the conflicting service instance, that attempt fails.)

## MAC Address Deny List

A deny list is a set of MAC addresses that are not permitted on a service instance. An attempt to learn a denied MAC address will fail. On a service instance that is a member of a bridge domain, the operator is permitted to configure one or more denied MAC addresses. The arrival of a frame with a source MAC address that is part of a deny list will trigger a violation response.

Before a denied address can be configured, the following test is performed:

- If the address is already configured as a permitted address on the specific service instance or if the address has been learned and saved as a sticky address on the service instance, the configuration is rejected with an appropriate error message.

In all other cases, the configuration of the denied address is accepted. Typical cases include:

- The address is configured as a permitted address on another service instance in the same bridge domain, or the address has been learned and saved as a sticky address on another service instance.
- The address is present in the MAC table of the bridge domain as a dynamically learned address on the specific service instance and is deleted from the MAC table before the configuration is accepted.

## Violation Response Configuration

A violation response is a response to a MAC security violation or a failed attempt to dynamically learn a MAC address due to an address violation. MAC security violations are of two types:

**Type 1 Violation** --The address of the ingress frame cannot be dynamically learned due to a deny list, or because doing so would cause the maximum number of secure addresses to be exceeded .

**Type 2 Violation** --The address of the ingress frame cannot be dynamically learned because it is already “present” on another secured service instance in the same bridge-domain.

There are three possible sets of actions that can be taken in response to a violation:

### 1. Shutdown

- The ingress frame is dropped.
- The service instance on which the offending frame arrived is shut down.
- The event and the response are logged to SYSLOG.

### 2. Restrict

- The ingress frame is dropped.
- The event and the response are logged to SYSLOG.

### 3. Protect

- The ingress frame is dropped.




---

**Note** The ingress frame is dropped silently, without sending any violation report to the SYSLOG.

---




---

**Note** The Restrict and Protect modes are applied on EFP level to discard the traffic. Both the modes are not applied on the Erroneous MAC level.

---

If a violation response is not configured, the default response mode is shutdown. The violation response can be configured to protect or restrict mode. A “no” form of a violation response, sets the violation response to the default mode of shutdown.

You are allowed to configure the desired response for a Type 1 and Type 2 violations on a service instance. For a Type 1 violation on a bridge domain (that is, if the learn attempt conforms to the policy configured on the service instance, but violates the policy configured on the bridge domain), the response is always “Protect.” This is not configurable.

In shutdown mode, the service instance is put into the error disabled state immediate, an SNMP trap notification is transmitted, and a message is sent to the console and SYSLOG as shown below:

```
%ETHER_SERVICE-6-ERR_DISABLED:
Mac security violation - shutdown service instance 100 on interface gig 0/0/0
```

To bring a service instance out of error-disabled state, perform a **shutdown** and then a **no shutdown** of the service-instance.

In Restrict mode, the violation report is sent to SYSLOG at level LOG\_WARNING.

Support for the different types of violation responses depends on the capabilities of the platform. The desired violation response can be configured on the service instance. The configured violation response does not take effect unless and until MAC security is enabled using the **mac security** command.

## MAC Address Aging Configuration

A specific time scheduler can be set to age out secured MAC addresses that are dynamically learned or statically configured on both service instances and bridge domains, thus freeing up unused addresses from the MAC address table for other active subscribers.

The set of rules applied to age out secured MAC addresses is called secure aging. By default, the entries in the MAC address table of a secured service instance are never aged out. This includes permitted addresses and dynamically learned addresses.

The **mac security aging time** *aging-time* command sets the aging time of the addresses in the MAC address table to *<n>* minutes. By default, this affects only dynamically learned (not including sticky) addresses--permitted addresses and sticky addresses are not affected by the application of this command.

By default, the aging time *<n>* configured via the **mac security aging time** *aging-time* command is an absolute time. That is, the age of the MAC address is measured from the instant that it was first encountered on the service instance. This interpretation can be modified by using the **mac security aging time** *aging-time inactivity* command, which specifies that the age *<n>* be measured from the instant that the MAC address was last encountered on the service instance.



The **mac security aging static** and **mac security aging sticky** commands specify that the **mac security aging time** aging-time command must be applicable to permitted and sticky MAC addresses, respectively. In the case of permitted MAC addresses, the absolute aging time is measured from the time the address is entered into the MAC address table (for example, when it is configured or whenever the **mac security** command is entered--whichever is later).

If the **mac security aging time** command is not configured, the **mac security aging static** command has no effect.

## Sticky MAC Address Configurations

The ability to make dynamically learned MAC addresses on secured service instances permanent even after interface transitions or device reloads can be set up and configured. A dynamically learned MAC address that is made permanent on a secured service instance is called a “sticky MAC address”. The **mac security sticky** command is used to enable the sticky MAC addressing feature on a service instance.

With the “sticky” feature enabled on a secured service instance, MAC addresses learned dynamically on the service instance are kept persistent across service instance line transitions and device reloads.

The sticky feature has no effect on statically configured MAC addresses. The sticky addresses are saved in the running configuration. Before the device is reloaded, it is the responsibility of the user to save the running configuration to the startup configuration. Doing this will ensure that when the device comes on, all the MAC addresses learned dynamically previously are immediately populated into the MAC address table.

The **mac security sticky address mac-address** command can configure a specific MAC address as a sticky MAC address. The use of this command is not recommended for the user because configuring a MAC address as a static address does the same thing. When sticky MAC addressing is enabled by the **mac security sticky** command, the dynamically learned addresses are marked as sticky and a **mac security sticky address mac-address** command is automatically generated and saved in the running configuration for each learned MAC address on the service instances.

## Aging for Sticky Addresses

MAC addresses learned on a service instance that has the sticky behavior enabled are subject to aging as configured by the **mac security aging time** and **mac security aging sticky** commands. In other words, for the purpose of aging functionality, sticky addresses are treated the same as dynamically learned addresses.

## Transitions

This section contains a description of the expected behavior of the different MAC security elements when various triggers are applied; for example, configuration changes or link state transitions.

## MAC Security Enabled on a Service Instance

When MAC security is enabled on a service instance, all existing MAC table entries for the service instance are purged. Then, permitted MAC address entries and sticky addresses are added to the MAC table, subject to the prevailing MAC address limiting constraints on the bridge domain.

If MAC address limits are exceeded, any MAC address that fails to get added is reported via an error message to the console, the attempt to enable MAC security on the service instance fails, and the already added permitted entries are backed out or removed.

The aging timer for all entries is updated according to the secure aging rules.

## MAC Security Disabled on a Service Instance

The existing MAC address table entries for this service instance are purged.

## Service Instance Moved to a New Bridge Domain

This transition sequence applies to all service instances, whether or not they have MAC security configured. All the MAC addresses on this service instance in the MAC address table of the old bridge domain are removed. The count of dynamically learned addresses in the old bridge domain is decremented. Then, all the MAC security commands are permanently erased from the service instance.

## Service Instance Removed from a Bridge Domain

All the MAC addresses in the MAC address table that attributable to this service instance are removed, and the count of dynamically learned addresses in the bridge domain is decremented. Since MAC security is applicable only on service instances that are members of a bridge domain, removing a service instance from a bridge domain causes all the MAC security commands to be erased permanently.

## Service Instance Shut Down Due to Violation

All dynamically learned MAC addresses in the MAC address table are removed, and all the other MAC security state values are left unchanged. The only change is that no traffic is forwarded, and therefore no learning can take place.

## Interface Service Instance Down Linecard OIR Removed

The MAC tables of all the affected bridge domains are cleared of all the entries attributable to the service instances that are down.

## Interface Service Instance Re-activated Linecard OIR Inserted

The static and sticky address entries in the MAC tables of the affected bridge domains are re-created to the service instances that are activated.

## MAC Address Limit Decreased

When the value of the MAC address limit on the service instance is changed initially, a sanity check is performed to ensure that the new value of <n> is greater than or equal to the number of permitted entries. If not, the command is rejected. The MAC table is scanned for addresses that are attributable to this service instance, and dynamically learned MAC addresses are removed when the new MAC address limit is less than the old MAC address limit.

## Sticky Addresses Added or Removed on a Service Instance

Existing dynamically learned MAC addresses remain unchanged. All new addresses learned become “sticky” addresses.

Disabling sticky addresses causes all sticky secure MAC addresses on the service instance to be removed from the MAC address table. All new addresses learned become dynamic addresses on the service instance and are subject to aging.

# How to Configure MAC Address Limiting on Service Instances Bridge Domains and EVC Port Channels

## Enabling MAC Security on a Service Instance

Perform this task to enable MAC address security on a service instance.

### SUMMARY STEPS

1. **enable**
2. **configure terminal**
3. **interface** *type number*
4. **service instance** *id* **ethernet**
5. **encapsulation dot1q** *vlan-id*
6. **bridge-domain** *bridge-id*
7. **mac security**
8. **end**

### DETAILED STEPS

	Command or Action	Purpose
Step 1	<b>enable</b> <b>Example:</b> Device> enable	Enables privileged EXEC mode. <ul style="list-style-type: none"> <li>• Enter your password if prompted.</li> </ul>
Step 2	<b>configure terminal</b> <b>Example:</b> Device# configure terminal	Enters global configuration mode.
Step 3	<b>interface</b> <i>type number</i> <b>Example:</b> Device(config)# interface gigabitethernet2/0/1	Specifies the interface type and number, and enters interface configuration mode.
Step 4	<b>service instance</b> <i>id</i> <b>ethernet</b> <b>Example:</b> Device(config-if)# service instance 100 ethernet	Creates a service instance on an interface and enters service instance configuration mode.
Step 5	<b>encapsulation dot1q</b> <i>vlan-id</i> <b>Example:</b> Device(config-if-srv)# encapsulation dot1q 100	Defines the matching criteria to be used in order to map ingress dot1q frames on an interface to the appropriate service instance.

	Command or Action	Purpose
<b>Step 6</b>	<b>bridge-domain</b> <i>bridge-id</i> <b>Example:</b>  Device(config-if-srv)# bridge-domain 200	Binds the service instance to a bridge-domain instance where <i>bridge-id</i> is the identifier for the bridge-domain instance.
<b>Step 7</b>	<b>mac security</b> <b>Example:</b>  Device(config-if-srv)# mac security	Enables MAC security on the service instance.
<b>Step 8</b>	<b>end</b> <b>Example:</b>  Device(config-if-srv)# end	Returns to user EXEC mode.

## Enabling MAC Security on an EVC Port Channel

### Before you begin



#### Note

- Bridge-domain, xconnect, and Ethernet virtual circuits (EVCs) are allowed only over the port channel interface and the main interface.
- If you configure a physical port as part of a channel group, you cannot configure EVCs under that physical port.

### SUMMARY STEPS

1. **enable**
2. **configure terminal**
3. **interface port-channel** *channel-group*
4. **service instance** *id* **ethernet**
5. **encapsulation dot1q** *vlan-id*
6. **bridge-domain** *bridge-id*
7. **mac security**
8. **end**

### DETAILED STEPS

	Command or Action	Purpose
<b>Step 1</b>	<b>enable</b> <b>Example:</b>	Enables privileged EXEC mode. <ul style="list-style-type: none"> <li>• Enter your password if prompted.</li> </ul>

	Command or Action	Purpose
	Device> enable	
<b>Step 2</b>	<b>configure terminal</b> <b>Example:</b> Device# configure terminal	Enters global configuration mode.
<b>Step 3</b>	<b>interface port-channel <i>channel-group</i></b> <b>Example:</b> Device(config)# interface port-channel 2	Specifies the port channel group number and enters interface configuration mode. <ul style="list-style-type: none"> <li>• Acceptable values are integers from 1 to 64.</li> </ul>
<b>Step 4</b>	<b>service instance <i>id</i> ethernet</b> <b>Example:</b> Device(config-if)# service instance 100 ethernet	Creates a service instance on an interface and enters service instance configuration mode.
<b>Step 5</b>	<b>encapsulation dot1q <i>vlan-id</i></b> <b>Example:</b> Device(config-if-srv)# encapsulation dot1q 100	Defines the matching criteria to be used in order to map ingress dot1q frames on an interface to the appropriate service instance.
<b>Step 6</b>	<b>bridge-domain <i>bridge-id</i></b> <b>Example:</b> Device(config-if-srv)# bridge-domain 200	Binds the service instance to a bridge-domain instance where <i>bridge-id</i> is the identifier for the bridge-domain instance.
<b>Step 7</b>	<b>mac security</b> <b>Example:</b> Device(config-if-srv)# mac security	Enables MAC security on the service instance.
<b>Step 8</b>	end <b>Example:</b> Device(config-if-srv)# end	Returns to user EXEC mode.

## Configuring a MAC Address Permit List

Perform this task to configure permitted MAC addresses on a service instance that is a member of a bridge domain.

### SUMMARY STEPS

1. enable
2. configure terminal

3. **interface** *type number*
4. **service instance** *id* **ethernet**
5. **encapsulation dot1q** *vlan-id*
6. **bridge-domain** *bridge-id*
7. **mac security address permit** *mac-address*
8. **mac security address permit** *mac-address*
9. **mac security address permit** *mac-address*
10. **mac security address permit** *mac-address*
11. **mac security address permit** *mac-address*
12. **mac security**
13. **end**

## DETAILED STEPS

	Command or Action	Purpose
<b>Step 1</b>	<b>enable</b> <b>Example:</b> Device> enable	Enables privileged EXEC mode. <ul style="list-style-type: none"> <li>• Enter your password if prompted.</li> </ul>
<b>Step 2</b>	<b>configure terminal</b> <b>Example:</b> Device# configure terminal	Enters global configuration mode.
<b>Step 3</b>	<b>interface</b> <i>type number</i> <b>Example:</b> Device(config)# interface gigabitethernet2/0/1	Specifies the interface type and number, and enters interface configuration mode.
<b>Step 4</b>	<b>service instance</b> <i>id</i> <b>ethernet</b> <b>Example:</b> Device(config-if)# service instance 100 ethernet	Creates a service instance (an instance of an EVC) on an interface and enters service instance configuration mode.
<b>Step 5</b>	<b>encapsulation dot1q</b> <i>vlan-id</i> <b>Example:</b> Device(config-if-srv)# encapsulation dot1q 100	Defines the matching criteria to be used for mapping ingress dot1q frames on an interface to the appropriate service instance.
<b>Step 6</b>	<b>bridge-domain</b> <i>bridge-id</i> <b>Example:</b> Device(config-if-srv)# bridge-domain 200	Binds the service instance to a bridge-domain instance where <i>bridge-id</i> is the identifier for the bridge-domain instance.
<b>Step 7</b>	<b>mac security address permit</b> <i>mac-address</i> <b>Example:</b>	Adds the specified MAC address as a permit MAC address for the service instance.

	Command or Action	Purpose
	Device(config-if-srv)# mac security address permit a2aa.aaaa.aaaa	
<b>Step 8</b>	<b>mac security address permit mac-address</b> <b>Example:</b>  Device(config-if-srv)# mac security address permit a2aa.aaaa.aaab	Adds the specified MAC address as a permitted MAC address for the service instance.
<b>Step 9</b>	<b>mac security address permit mac-address</b> <b>Example:</b>  Device(config-if-srv)# mac security address permit a2aa.aaaa.aaac	Adds the specified MAC address as a permitted MAC address for the service instance.
<b>Step 10</b>	<b>mac security address permit mac-address</b> <b>Example:</b>  Device(config-if-srv)# mac security address permit a2aa.aaaa.aaad	Adds the specified MAC address as a permitted MAC address for the service instance.
<b>Step 11</b>	<b>mac security address permit mac-address</b> <b>Example:</b>  Device(config-if-srv)# mac security address permit a2aa.aaaa.aaae	Adds the specified MAC address as a permitted MAC address for the service instance.
<b>Step 12</b>	<b>mac security</b> <b>Example:</b>  Device(config-if-srv)# mac security	Enables MAC security on the service instance.
<b>Step 13</b>	<b>end</b> <b>Example:</b>  Device(config-if-srv)# end	Returns to user EXEC mode.

## Configuring a MAC Address Deny List

Perform this task to configure a list of MAC addresses that are not allowed on a service instance that is a member of a bridge domain.

### SUMMARY STEPS

1. **enable**
2. **configure terminal**
3. **interface type number**

4. **service instance** *id* **ethernet**
5. **encapsulation dot1q** *vlan-id*
6. **bridge-domain** *bridge-id*
7. **mac security address deny** *mac-address*
8. **mac security address deny** *mac-address*
9. **mac security address deny** *mac-address*
10. **mac security address deny** *mac-address*
11. **mac security address deny** *mac-address*
12. **mac security**
13. **end**

## DETAILED STEPS

	Command or Action	Purpose
<b>Step 1</b>	<b>enable</b> <b>Example:</b> Device> enable	Enables privileged EXEC mode. <ul style="list-style-type: none"> <li>• Enter your password if prompted.</li> </ul>
<b>Step 2</b>	<b>configure terminal</b> <b>Example:</b> Device# configure terminal	Enters global configuration mode.
<b>Step 3</b>	<b>interface type number</b> <b>Example:</b> Device(config)# interface gigabitethernet2/0/1	Specifies the interface type and number, and enters interface configuration mode.
<b>Step 4</b>	<b>service instance id ethernet</b> <b>Example:</b> Device(config-if)# service instance 100 ethernet	Creates a service instance (an instance of an EVC) on an interface and enters service instance configuration mode.
<b>Step 5</b>	<b>encapsulation dot1q vlan-id</b> <b>Example:</b> Device(config-if-srv)# encapsulation dot1q 100	Defines the matching criteria to be used in order to map ingress dot1q frames on an interface to the appropriate service instance.
<b>Step 6</b>	<b>bridge-domain bridge-id</b> <b>Example:</b> Device(config-if-srv)# bridge-domain 200	Binds the service instance to a bridge-domain instance where <i>bridge-id</i> is the identifier for the bridge-domain instance.
<b>Step 7</b>	<b>mac security address deny mac-address</b> <b>Example:</b>	Adds the specified MAC address as a denied MAC address for the service instance.



	Command or Action	Purpose
	Device(config-if-srv)# mac security address deny a2aa.aaaa.aaaa	
<b>Step 8</b>	<b>mac security address deny mac-address</b> <b>Example:</b>  Device(config-if-srv)# mac security address deny a2aa.aaaa.aaab	Adds the specified MAC address as a denied MAC address for the service instance.
<b>Step 9</b>	<b>mac security address deny mac-address</b> <b>Example:</b>  Device(config-if-srv)# mac security address deny a2aa.aaaa.aaac	Adds the specified MAC address as a denied MAC address for the service instance.
<b>Step 10</b>	<b>mac security address deny mac-address</b> <b>Example:</b>  Device(config-if-srv)# mac security address deny a2aa.aaaa.aaad	Adds the specified MAC address as a denied MAC address for the service instance.
<b>Step 11</b>	<b>mac security address deny mac-address</b> <b>Example:</b>  Device(config-if-srv)# mac security address deny a2aa.aaaa.aaae	Adds the specified MAC address as a denied MAC address for the service instance.
<b>Step 12</b>	<b>mac security</b> <b>Example:</b>  Device(config-if-srv)# mac security	Enables MAC security on the service instance.
<b>Step 13</b>	<b>end</b> <b>Example:</b>  Device(config-if-srv)# end	Returns to user EXEC mode.

## Configuring MAC Address Security on a Service Instance

Perform this task to configure an upper limit for the number of secured MAC addresses allowed on a service instance. This number includes addresses added as part of a permit list as well as dynamically learned MAC addresses. If the upper limit is decreased, all learned MAC entries are removed.

### SUMMARY STEPS

1. **enable**
2. **configure terminal**
3. **interface type number**

4. **service instance** *id* **ethernet**
5. **encapsulation dot1q** *vlan-id*
6. **bridge-domain** *bridge-id*
7. **mac security maximum addresses** *maximum-addresses*
8. **mac security**
9. **end**

## DETAILED STEPS

	Command or Action	Purpose
<b>Step 1</b>	<b>enable</b> <b>Example:</b> Device> enable	Enables privileged EXEC mode. <ul style="list-style-type: none"> <li>• Enter your password if prompted.</li> </ul>
<b>Step 2</b>	<b>configure terminal</b> <b>Example:</b> Device# configure terminal	Enters global configuration mode.
<b>Step 3</b>	<b>interface</b> <i>type number</i> <b>Example:</b> Device(config)# interface gigabitethernet2/0/1	Specifies the interface type and number, and enters interface configuration mode.
<b>Step 4</b>	<b>service instance</b> <i>id</i> <b>ethernet</b> <b>Example:</b> Device(config-if)# service instance 100 ethernet	Creates a service instance (an instance of an EVC) on an interface and enters service instance configuration mode.
<b>Step 5</b>	<b>encapsulation dot1q</b> <i>vlan-id</i> <b>Example:</b> Device(config-if-srv)# encapsulation dot1q 100	Defines the matching criteria to be used to map ingress dot1q frames on an interface to the appropriate service instance.
<b>Step 6</b>	<b>bridge-domain</b> <i>bridge-id</i> <b>Example:</b> Device(config-if-srv)# bridge-domain 200	Binds the service instance to a bridge-domain instance where <i>bridge-id</i> is the identifier for the bridge-domain instance.
<b>Step 7</b>	<b>mac security maximum addresses</b> <i>maximum-addresses</i> <b>Example:</b> Device(config-if-srv)# mac security maximum addresses 500	Sets the maximum number of secure addresses permitted on the service instance.  <b>Note</b> Default value for a service instance is '1'.
<b>Step 8</b>	<b>mac security</b> <b>Example:</b>	Enables MAC security on the service instance.

	Command or Action	Purpose
	Device(config-if-srv)# mac security	
<b>Step 9</b>	<b>end</b> <b>Example:</b> Device(config-if-srv)# end	Returns to user EXEC mode.

## Configuring a MAC Address Violation

Perform this task to specify the expected behavior of a device when an attempt to dynamically learn a MAC address fails because the configured MAC security policy on the service instance was violated.

### SUMMARY STEPS

1. **enable**
2. **configure terminal**
3. **interface** *type number*
4. **service instance** *id* **ethernet**
5. **encapsulation dot1q** *vlan-id*
6. **bridge-domain** *bridge-id*
7. Do one of the following:
  - **mac security violation restrict**
  - **mac security violation protect**
8. **mac security**
9. **end**

### DETAILED STEPS

	Command or Action	Purpose
<b>Step 1</b>	<b>enable</b> <b>Example:</b> Device> enable	Enables privileged EXEC mode. <ul style="list-style-type: none"> <li>• Enter your password if prompted.</li> </ul>
<b>Step 2</b>	<b>configure terminal</b> <b>Example:</b> Device# configure terminal	Enters global configuration mode.
<b>Step 3</b>	<b>interface</b> <i>type number</i> <b>Example:</b> Device(config)# interface gigabitethernet2/0/1	Specifies the interface type and number, and enters interface configuration mode.

	Command or Action	Purpose
<b>Step 4</b>	<b>service instance</b> <i>id</i> <b>ethernet</b> <b>Example:</b> <pre>Device(config-if)# service instance 100 ethernet</pre>	Creates a service instance (an instance of an EVC) on an interface and enters service instance configuration mode.
<b>Step 5</b>	<b>encapsulation dot1q</b> <i>vlan-id</i> <b>Example:</b> <pre>Device(config-if-srv)# encapsulation dot1q 100</pre>	Defines the matching criteria to be used to map ingress dot1q frames on an interface to the appropriate service instance.
<b>Step 6</b>	<b>bridge-domain</b> <i>bridge-id</i> <b>Example:</b> <pre>Device(config-if-srv)# bridge-domain 100</pre>	Binds the service instance to a bridge-domain instance where <i>bridge-id</i> is the identifier for the bridge-domain instance.
<b>Step 7</b>	Do one of the following: <ul style="list-style-type: none"> <li>• <b>mac security violation restrict</b></li> <li>• <b>mac security violation protect</b></li> </ul> <b>Example:</b> <pre>Device(config-if-srv)# mac security violation restrict</pre> <b>Example:</b> <pre>Device(config-if-srv)# mac security violation protect</pre>	Sets the violation mode (for Type 1 and 2 violations) to restrict. or Sets the violation mode (for Type 1 and 2 violations) to protect. <ul style="list-style-type: none"> <li>• If a MAC security violation response is not specified, by default, the violation mode is shutdown.</li> </ul>
<b>Step 8</b>	<b>mac security</b> <b>Example:</b> <pre>Device(config-if-srv)# mac security</pre>	Enables MAC security on the service instance.
<b>Step 9</b>	<b>end</b> <b>Example:</b> <pre>Device(config-if-srv)# end</pre>	Returns to user EXEC mode.

## Configuring MAC Address Aging

Perform this task to configure the aging of secured MAC addresses under MAC security. Secured MAC addresses are not subject to the normal aging of MAC table entries. If aging is not configured, secured MAC addresses are never aged out.

### SUMMARY STEPS

1. enable

2. **configure terminal**
3. **interface** *type number*
4. **service instance** *id* **ethernet**
5. **encapsulation dot1q** *vlan-id*
6. **bridge-domain** *bridge-id*
7. **mac security aging time** *aging-time* [ **inactivity** ]
8. **mac security**
9. **end**

## DETAILED STEPS

	Command or Action	Purpose
Step 1	<b>enable</b> <b>Example:</b> Device> enable	Enables privileged EXEC mode. <ul style="list-style-type: none"> <li>• Enter your password if prompted.</li> </ul>
Step 2	<b>configure terminal</b> <b>Example:</b> Device# configure terminal	Enters global configuration mode.
Step 3	<b>interface</b> <i>type number</i> <b>Example:</b> Device(config)# interface gigabitethernet2/0/1	Specifies the interface type and number, and enters interface configuration mode.
Step 4	<b>service instance</b> <i>id</i> <b>ethernet</b> <b>Example:</b> Device(config-if)# service instance 100 ethernet	Creates a service instance (an instance of an EVC) on an interface and enters service instance configuration mode.
Step 5	<b>encapsulation dot1q</b> <i>vlan-id</i> <b>Example:</b> Device(config-if-srv)# encapsulation dot1q 100	Defines the matching criteria to be used in order to map ingress dot1q frames on an interface to the appropriate service instance.
Step 6	<b>bridge-domain</b> <i>bridge-id</i> <b>Example:</b> Device(config-if-srv)# bridge-domain 200	Binds the service instance to a bridge-domain instance where <i>bridge-id</i> is the identifier for the bridge-domain instance.
Step 7	<b>mac security aging time</b> <i>aging-time</i> [ <b>inactivity</b> ] <b>Example:</b> Device(config-if-srv)# mac security aging time 200 inactivity	Sets the aging time for secure addresses, in minutes. The optional <b>inactivity</b> keyword specifies that the aging out of addresses is based on inactivity of the sending hosts (as opposed to absolute aging).

	Command or Action	Purpose
<b>Step 8</b>	<b>mac security</b> <b>Example:</b> Device(config-if-srv)# mac security	Enables MAC security on the service instance.
<b>Step 9</b>	<b>end</b> <b>Example:</b> Device(config-if-srv)# end	Returns to user EXEC mode.

## Configuring a Sticky MAC Address

If sticky MAC addressing is configured on a secured service instance, MAC addresses that are learned dynamically on the service instance are retained during a link-down condition. Perform this task to configure sticky MAC addresses on a service instance.

### SUMMARY STEPS

1. **enable**
2. **configure terminal**
3. **interface** *type number*
4. **service instance** *id* **ethernet**
5. **encapsulation dot1q** *vlan-id*
6. **bridge-domain** *bridge-id*
7. **mac security sticky address** *mac-address*
8. **mac security**
9. **end**

### DETAILED STEPS

	Command or Action	Purpose
<b>Step 1</b>	<b>enable</b> <b>Example:</b> Device> enable	Enables privileged EXEC mode. <ul style="list-style-type: none"> <li>• Enter your password if prompted.</li> </ul>
<b>Step 2</b>	<b>configure terminal</b> <b>Example:</b> Device# configure terminal	Enters global configuration mode.
<b>Step 3</b>	<b>interface</b> <i>type number</i> <b>Example:</b> Device(config)# interface gigabitethernet2/0/1	Specifies the interface type and number, and enters interface configuration mode.

	Command or Action	Purpose
Step 4	<b>service instance <i>id</i> ethernet</b> <b>Example:</b> <pre>Device(config-if)# service instance 100 ethernet</pre>	Creates a service instance (an instance of an EVC) on an interface and enters service instance configuration mode.
Step 5	<b>encapsulation dot1q <i>vlan-id</i></b> <b>Example:</b> <pre>Device(config-if-srv)# encapsulation dot1q 100</pre>	Defines the matching criteria to be used to map ingress dot1q frames on an interface to the appropriate service instance.
Step 6	<b>bridge-domain <i>bridge-id</i></b> <b>Example:</b> <pre>Device(config-if-srv)# bridge-domain 200</pre>	Binds the service instance to a bridge-domain instance where <i>bridge-id</i> is the identifier for the bridge-domain instance.
Step 7	<b>mac security sticky address <i>mac-address</i></b> <b>Example:</b> <pre>Device(config-if-srv)# mac security sticky address 1111.2222.3333</pre>	Sets up a MAC address to be declared as a sticky MAC address on the service instance.
Step 8	<b>mac security</b> <b>Example:</b> <pre>Device(config-if-srv)# mac security</pre>	Enables MAC security on the service instance.
Step 9	<b>end</b> <b>Example:</b> <pre>Device(config-if-srv)# end</pre>	Returns to user EXEC mode.

## Displaying the MAC Security Status of a Specific Service Instance

Perform this task to display the MAC security status of a service instance.

### SUMMARY STEPS

1. **enable**
2. **show ethernet service instance id *id* interface *type* *number* mac security**
3. **end**

### DETAILED STEPS

	Command or Action	Purpose
Step 1	<b>enable</b> <b>Example:</b>	Enables privileged EXEC mode. <ul style="list-style-type: none"> <li>• Enter your password if prompted.</li> </ul>

## Displaying the Service Instances with MAC Security Enabled

	Command or Action	Purpose
	Device> enable	
<b>Step 2</b>	<b>show ethernet service instance id <i>id</i> interface <i>type</i> number mac security</b> <b>Example:</b> Device# show ethernet service instance id 100 interface gigabitethernet1/1 mac security	Displays the MAC security status of a specific service instance.
<b>Step 3</b>	<b>end</b> <b>Example:</b> Device# end	Returns to user EXEC mode.

## Displaying the Service Instances with MAC Security Enabled

Perform this task to display all the service instances with MAC security enabled.

### SUMMARY STEPS

1. enable
2. show ethernet service instance mac security
3. end

### DETAILED STEPS

	Command or Action	Purpose
<b>Step 1</b>	<b>enable</b> <b>Example:</b> Device> enable	Enables privileged EXEC mode. <ul style="list-style-type: none"> <li>• Enter your password if prompted.</li> </ul>
<b>Step 2</b>	<b>show ethernet service instance mac security</b> <b>Example:</b> Device# show ethernet service instance mac security	Displays all the service instances with MAC security enabled.
<b>Step 3</b>	<b>end</b> <b>Example:</b> Device# end	Returns to user EXEC mode.



## Displaying the Service Instances with MAC Security Enabled on a Specific Bridge Domain

Perform this task to display the service instances on a specific bridge domain that have MAC security enabled.

### SUMMARY STEPS

1. **enable**
2. **show bridge-domain *id* mac security**
3. **end**

### DETAILED STEPS

	Command or Action	Purpose
Step 1	<b>enable</b> <b>Example:</b> Device> enable	Enables privileged EXEC mode. <ul style="list-style-type: none"> <li>• Enter your password if prompted.</li> </ul>
Step 2	<b>show bridge-domain <i>id</i> mac security</b> <b>Example:</b> Device# show bridge-domain 100 mac security	Displays all the service instances with MAC security enabled on a specific bridge domain.
Step 3	<b>end</b> <b>Example:</b> Device# end	Returns to user EXEC mode.

## Showing the MAC Addresses of All Secured Service Instances

### SUMMARY STEPS

1. **enable**
2. **show ethernet service instance mac security address**
3. **show mac address-table secure**
4. **end**

### DETAILED STEPS

	Command or Action	Purpose
Step 1	<b>enable</b> <b>Example:</b> Device> enable	Enables privileged EXEC mode. <ul style="list-style-type: none"> <li>• Enter your password if prompted.</li> </ul>

## Showing the MAC Addresses of a Specific Service Instance

	Command or Action	Purpose
<b>Step 2</b>	<b>show ethernet service instance mac security address</b> <b>Example:</b> <pre>Device# show ethernet service instance mac security address</pre>	Displays the secured addresses on all the service instances.
<b>Step 3</b>	<b>show mac address-table secure</b> <b>Example:</b> <pre>Device# show mac address-table secure</pre>	Displays the secure MAC address on the service instances.
<b>Step 4</b>	<b>end</b> <b>Example:</b> <pre>Device# end</pre>	Returns to user EXEC mode.

## Showing the MAC Addresses of a Specific Service Instance

### SUMMARY STEPS

1. enable
2. show ethernet service instance id *id* interface *type number* mac security address
3. end

### DETAILED STEPS

	Command or Action	Purpose
<b>Step 1</b>	<b>enable</b> <b>Example:</b> <pre>Device&gt; enable</pre>	Enables privileged EXEC mode. <ul style="list-style-type: none"> <li>• Enter your password if prompted.</li> </ul>
<b>Step 2</b>	<b>show ethernet service instance id <i>id</i> interface <i>type number</i> mac security address</b> <b>Example:</b> <pre>Device# show ethernet service instance id 200 interface GigabitEthernet 1/0 mac security address</pre>	Displays the addresses of a specific service instance.
<b>Step 3</b>	<b>end</b> <b>Example:</b> <pre>Device# end</pre>	Returns to user EXEC mode.

## Showing the MAC Addresses of All Service Instances on a Specific Bridge Domain

### SUMMARY STEPS

1. `enable`
2. `show bridge-domain id mac security address`
3. `end`

### DETAILED STEPS

	Command or Action	Purpose
Step 1	<b>enable</b> <b>Example:</b> Device> enable	Enables privileged EXEC mode. <ul style="list-style-type: none"> <li>• Enter your password if prompted.</li> </ul>
Step 2	<b>show bridge-domain <i>id</i> mac security address</b> <b>Example:</b> Device# show bridge-domain 100 mac security address	Displays the secured addresses of all the service instances on a specified bridge domain.
Step 3	<b>end</b> <b>Example:</b> Device# end	Returns to user EXEC mode.

## Showing the MAC Security Statistics of a Specific Service Instance

This section describes how to display the MAC security statistics of a specific service instance.

### SUMMARY STEPS

1. `enable`
2. `show ethernet service instance id id interface type number mac security statistics`
3. `end`

### DETAILED STEPS

	Command or Action	Purpose
Step 1	<b>enable</b> <b>Example:</b> Device> enable	Enables privileged EXEC mode. <ul style="list-style-type: none"> <li>• Enter your password if prompted.</li> </ul>

	Command or Action	Purpose
<b>Step 2</b>	<b>show ethernet service instance id <i>id</i> interface <i>type</i> number mac security statistics</b>  <b>Example:</b>  <pre>Device# show ethernet service instance id 100 interface gigabitethernet1/1 mac security statistics</pre>	Displays the MAC security statistics of a specific service instance.
<b>Step 3</b>	<b>end</b>  <b>Example:</b>  <pre>Device# end</pre>	Returns to user EXEC mode.

## Showing the MAC Security Statistics of All Service Instances on a Specific Bridge Domain

Perform this task to display the MAC security statistics of all the service instances on a specific bridge domain.

### SUMMARY STEPS

1. **enable**
2. **show bridge-domain *bridge-id* mac security statistics**
3. **end**

### DETAILED STEPS

	Command or Action	Purpose
<b>Step 1</b>	<b>enable</b>  <b>Example:</b>  <pre>Device&gt; enable</pre>	Enables privileged EXEC mode. <ul style="list-style-type: none"> <li>• Enter your password if prompted.</li> </ul>
<b>Step 2</b>	<b>show bridge-domain <i>bridge-id</i> mac security statistics</b>  <b>Example:</b>  <pre>Device# show bridge-domain 100 mac security statistics</pre>	Displays the MAC security statistics of all service instances that belong to a specific bridge domain.
<b>Step 3</b>	<b>end</b>  <b>Example:</b>  <pre>Device# end</pre>	Returns to user EXEC mode.

## Showing the Last Violation Recorded on Each Service Instance on a Specific Bridge Domain

Perform this task to display the last violation recorded on each service instance on a specific bridge domain. Service instances on which there have been no violations are excluded from the output.

### SUMMARY STEPS

1. **enable**
2. **show bridge-domain *bridge-id* mac security last violation**
3. **end**

### DETAILED STEPS

	Command or Action	Purpose
Step 1	<b>enable</b> <b>Example:</b> Device> enable	Enables privileged EXEC mode. <ul style="list-style-type: none"> <li>• Enter your password if prompted.</li> </ul>
Step 2	<b>show bridge-domain <i>bridge-id</i> mac security last violation</b> <b>Example:</b> Device# show bridge-domain 100 mac security last violation	Displays information about the last violation recorded on each of the service instances that belong to the bridge domain.
Step 3	<b>end</b> <b>Example:</b> Device# end	Returns to user EXEC mode.

## Clearing All Dynamically Learned Secure MAC Addresses on a Service Instance

Perform this task to clear all dynamically learned Secure MAC addresses on a service instance.

### SUMMARY STEPS

1. **enable**
2. **clear ethernet service instance id *id* interface *type number* mac table**
3. **end**

### DETAILED STEPS

	Command or Action	Purpose
Step 1	<b>enable</b>	Enables privileged EXEC mode.

## Clearing All Dynamically Learned MAC Addresses on a Bridge Domain

	Command or Action	Purpose
	<b>Example:</b> Device> enable	<ul style="list-style-type: none"> <li>Enter your password if prompted.</li> </ul>
<b>Step 2</b>	<b>clear ethernet service instance id <i>id</i> interface <i>type</i> number mac table</b> <b>Example:</b> Device# clear ethernet service instance id 100 interface gigabitethernet0/0/1 mac table	Clears all the dynamically learned Secure MAC addresses on the specified service instance.
<b>Step 3</b>	<b>end</b> <b>Example:</b> Device# end	Returns to user EXEC mode.

## Clearing All Dynamically Learned MAC Addresses on a Bridge Domain

Perform this task to clear all dynamically learned MAC addresses on a bridge domain.

### SUMMARY STEPS

- enable
- clear bridge-domain *bridge-id* mac table
- end

### DETAILED STEPS

	Command or Action	Purpose
<b>Step 1</b>	<b>enable</b> <b>Example:</b> Device> enable	Enables privileged EXEC mode. <ul style="list-style-type: none"> <li>Enter your password if prompted.</li> </ul>
<b>Step 2</b>	<b>clear bridge-domain <i>bridge-id</i> mac table</b> <b>Example:</b> Device# clear bridge-domain 100 mac table	Clears all dynamically learned MAC addresses on the specified bridge domain.
<b>Step 3</b>	<b>end</b> <b>Example:</b> Device# end	Returns to user EXEC mode.

# Configuration Examples for MAC Address Limiting on Service Instances and Bridge Domains and EVC Port Channels

## Example Enabling MAC Security on a Service Instance

The following example shows how to enable MAC security on a service instance:

```
Device> enable
Device# configure terminal
Device(config)# interface gigabitethernet 3/0/1
Device(config-if)# service instance 100 ethernet
Device(config-if-srv)# encapsulation dot1Q 100
Device(config-if-srv)# bridge-domain 100
Device(config-if-srv)# mac security
Device(config-if-srv)# end
```

## Example Enabling MAC Security on an EVC Port Channel

The following example shows how to enable MAC Security on an EVC port channel:

```
Device> enable
Device# configure terminal
Device(config)# interface port-channel 2
Device(config-if)# service instance 100 ethernet
Device(config-if-srv)# encapsulation dot1Q 100
Device(config-if-srv)# bridge-domain 100
Device(config-if-srv)# mac security
Device(config-if-srv)# end
```

## Example Configuring a MAC Address Permit List

The following example shows how to configure a MAC address permit list:

```
Device> enable
Device# configure terminal
Device(config)# interface gigabitethernet 3/0/1
Device(config-if)# service instance 100 ethernet
Device(config-if-srv)# encapsulation dot1Q 100
Device(config-if-srv)# bridge-domain 100
Device(config-if-srv)# mac security maximum addresses 5
Device(config-if-srv)# mac security address permit a2aa.aaaa.aaaa
Device(config-if-srv)# mac security address permit a2aa.aaaa.aaab
Device(config-if-srv)# mac security address permit a2aa.aaaa.aaac
Device(config-if-srv)# mac security address permit a2aa.aaaa.aaad
Device(config-if-srv)# mac security address permit a2aa.aaaa.aaae
Device(config-if-srv)# mac security
Device(config-if-srv)# end
```

## Example Configuring a MAC Address Deny List

The following example shows how to configure a MAC address deny list:

```
Device> enable
Device# configure terminal
Device(config)# interface gigabitethernet 3/0/1
Device(config-if)# service instance 100 ethernet
Device(config-if-srv)# encapsulation dot1Q 100
Device(config-if-srv)# bridge-domain 100
Device(config-if-srv)# mac security address deny a2aa.aaaa.aaaa
Device(config-if-srv)# mac security address deny a2aa.aaaa.aaab
Device(config-if-srv)# mac security address deny a2aa.aaaa.aaac
Device(config-if-srv)# mac security address deny a2aa.aaaa.aaad
Device(config-if-srv)# mac security address deny a2aa.aaaa.aaae
Device(config-if-srv)# mac security
Device(config-if-srv)# end
```

## Example Configuring a MAC Address Security on a Service Instance

```
Device> enable
Device# configure terminal
Device(config)# interface gigabitethernet 3/0/1
Device(config-if)# service instance 100 ethernet
Device(config-if-srv)# encapsulation dot1Q 100
Device(config-if-srv)# bridge-domain 100
Device(config-if-srv)# mac security maximum addresses 10
Device(config-if-srv)# mac security
Device(config-if-srv)# end
```

## Example Configuring a MAC Address Violation Response

```
Device> enable
Device# configure terminal
Device(config)# interface gigabitethernet 3/0/1
Device(config-if)# service instance 100 ethernet
Device(config-if-srv)# encapsulation dot1Q 100
Device(config-if-srv)# bridge-domain 100
Device(config-if-srv)# mac security address permit a2aa.aaaa.aaaa
Device(config-if-srv)# mac security violation protect
Device(config-if-srv)# mac security
Device(config-if-srv)# end
```

## Example Configuring MAC Address Aging

```
Device> enable
Device# configure terminal
Device(config)# interface gigabitethernet 4/0/1
Device(config-if)# service instance 100 ethernet
Device(config-if-srv)# encapsulation dot1q 100
Device(config-if-srv)# bridge-domain 100
Device(config-if-srv)# mac security aging time 10
Device(config-if-srv)# mac security
Device(config-if-srv)# end
```



## Example Configuring a Sticky MAC Address

```
Device> enable
Device# configure terminal
Device(config)# interface gigabitethernet 3/0/1
Device(config-if)# service instance 100 ethernet
Device(config-if-srv)# encapsulation dot1Q 100
Device(config-if-srv)# bridge-domain 100
Device(config-if-srv)# mac security sticky address 1111.2222.3333
Device(config-if-srv)# mac security
```

## Example Displaying the MAC Addresses on a Specific Secure Service Instance

```
Device# show ethernet service instance id 10 inter gig 0/0/3 mac security
address Bridge-domain 10

MAC Address      Type
0000.00ac.ef02   sticky
0000.00ac.ef03   sticky
0001.0001.aaaa   dynamic
0001.0001.aaab   dynamic
```

## Example Displaying the Last Violation on a Specific Service Instance

```
Device# show bridge-domain 100 mac security last violation Te0/0/3 ServInst 200
Last violation at: 15:54:25 IST Fri Jun 5 2015
Source MAC address: 0000.1111.1111
Reason: Re-learn attempt
Total violation count: 321
```

## Example Displaying the MAC Security Status of a Specific Service Instance

```
Device# show ethernet service instance id 100 interface te0/0/3 mac security
Bridge-domain 100
MAC Security enabled: yes
```

## Example Displaying the MAC Addresses of All Secured Service Instances

```
Device# show ethernet service instance mac security address
Port      Bridge-domain  MAC Address  Type
Gi0/0/3  ServInst 10    0000.00ac.ef02 sticky
Gi0/0/3  ServInst 10    0000.00ac.ef03 sticky
Gi0/0/3  ServInst 10    0000.00ac.ef04 dynamic
Gi0/0/3  ServInst 10    0000.00ac.ef05 dynamic
Gi0/0/3  ServInst 10    0000.00ac.ef06 sticky
Gi0/0/3  ServInst 10    0000.00ac.ef07 dynamic
Gi0/0/3  ServInst 10    0000.00ac.ef08 dynamic
Gi0/0/3  ServInst 10    0000.00ac.ef09 dynamic
Gi0/0/3  ServInst 10    0000.00ac.ef0a dynamic
Gi0/0/3  ServInst 10    0000.00ac.ef0b dynamic
```

## Example Displaying the MAC Security Statistics of All Service Instances

In the following example, the numbers of allowed and actual secured addresses recorded on the service instance are displayed.

```
Device# show ethernet serv instance mac security statistics
Te0/0/3 ServInst 100 (bridge-domain 100)
Current secure addresses: 1
Permitted addresses: 10
Te0/0/3 ServInst 200 (bridge-domain 100)
Current secure addresses: 0
Permitted addresses: 1
Te0/0/3 ServInst 300 (bridge-domain 100)
Current secure addresses: 0
Permitted addresses: 1
```

## Example: Displaying the MAC Addresses on All Service Instances for a Bridge Domain

```
Router# show bridge-domain 10 mac security address
Port          MAC Address      Type
Gi0/0/3 ServInst 10  0000.00ac.ef02  sticky
Gi0/0/3 ServInst 10  0000.00ac.ef03  sticky
Gi0/0/3 ServInst 10  0000.00ac.ef04  dynamic
Gi0/0/3 ServInst 10  0000.00ac.ef05  dynamic
Gi0/0/3 ServInst 10  0000.00ac.ef06  sticky
Gi0/0/3 ServInst 10  0000.00ac.ef07  dynamic
Gi0/0/3 ServInst 10  0000.00ac.ef08  dynamic
Gi0/0/3 ServInst 10  0000.00ac.ef09  dynamic
Gi0/0/3 ServInst 10  0000.00ac.ef0a  dynamic
Gi0/0/3 ServInst 10  0000.00ac.ef0b  dynamic
```

## Example Displaying the Secured Service Instances for a Specific Bridge Domain

```
Router# show bridge-domain 10 mac security
Gi0/0/3 ServInst 10
MAC Security enabled: yes
```

## Displaying Syslog Messages for Different Types of Violations

Syslog for Type1 Violation: MAC move between mac security enabled EFPs

```
*May 10 11:59:52.775: %MACSEC-3-VIOLATION_SHUT_RELEARN: Attempt to move 0000.0700.0b00
from [TenGigabitEthernet0/0/12 service instance 100 (bridge-domain 1000)] to
[TenGigabitEthernet0/0/12 service instance 200
(bridge-domain 1000)], shutting down the latter
*May 10 11:59:52.776: %ETHER_SERVICE-6-ERR_DISABLED: Mac security violation - shutdown
service instance 200 at TenGigabitEthernet0/0/12
```

Syslog for Type2 Violation: Exceeding the maximum MAC address limit in the MAC security enabled EFPs

```
*May 10 12:02:16.503: %MACSEC-3-VIOLATION_SHUT_INST_LIMIT: Attempt to learn 0000.0100.0b00
on TenGigabitEthernet0/0/12 service instance 200 (bridge-domain 1000) caused configured
service instance limit (1) to be exceeded. Service instance will be shutdown.
*May 10 12:02:16.507: %ETHER_SERVICE-6-ERR_DISABLED: Mac security violation - shutdown
service instance 200 at TenGigabitEthernet0/0/12
```





## CHAPTER 6

# Static MAC Address Support on Service Instances

---

The Multicast and Unicast static MAC address support on Service Instances feature supports configuration of a static MAC address on a pseudoport. Use of a static MAC address for Broadband Network Gateway (BNG) upstream traffic enables traffic forwarding while conserving MAC table resources and limiting the traffic flood by creating multicast groups.

- [Prerequisites for Static MAC Address Support on Service Instances, on page 77](#)
- [Restrictions for Static MAC Address Support on Service Instances, on page 77](#)
- [Information about Static MAC Address Support on Service Instances, on page 78](#)
- [Configuring a Static MAC Address on a Service Instance, on page 78](#)
- [Verifying Configured Static MAC Addresses on a Service Instance, on page 79](#)
- [Additional References, on page 80](#)
- [Feature Information for Static MAC Address Support on Service Instances, on page 81](#)

## Prerequisites for Static MAC Address Support on Service Instances

- Knowledge of both port and bridge domain limitations.
- Knowledge of service instances.

## Restrictions for Static MAC Address Support on Service Instances

- Static MAC configuration is *not* allowed at secure service instance.
- Static MAC addresses are programmed only on switch processors (both active and standby).
- The Static MAC address on Pseudowires is *not* supported on the Cisco ASR 900 Series Routers.
- Static MAC address configuration is *not* supported on Trunk EFP.

# Information about Static MAC Address Support on Service Instances

Static MAC address configuration on service instances eliminates the need for MAC address learning, which is required for traffic forwarding. In the upstream direction, without MAC address learning, MAC address table resources can be conserved and network resources optimized.

When a bridge domain ID is either changed or deleted for a service instance, all static MAC addresses are removed.

When a service instance is deleted, all static MAC addresses on that pseudoport are removed.

## Configuring a Static MAC Address on a Service Instance

Perform this task to manually configure a static MAC address on a service instance.

### SUMMARY STEPS

1. **enable**
2. **configure terminal**
3. **interface** *type number*
4. **service instance** *id ethernet [evc-id]*
5. **encapsulation dot1q** *vlan-id* [*, vlan-id*[- *vlan-id*]]
6. **bridge-domain** *bridge-id* [*split-horizon*[*group group-id*]]
7. **mac static address** *mac-addr*
8. **exit**

### DETAILED STEPS

	Command or Action	Purpose
Step 1	<b>enable</b> <b>Example:</b> Router> enable	Enables privileged EXEC mode. <ul style="list-style-type: none"> <li>• Enter your password if prompted.</li> </ul>
Step 2	<b>configure terminal</b> <b>Example:</b> Router# configure terminal	Enters global configuration mode.
Step 3	<b>interface</b> <i>type number</i> <b>Example:</b> Router(config)# interface GigabitEthernet 0/2/1	Configures an interface type and enters interface configuration mode.

	Command or Action	Purpose
Step 4	<b>service instance</b> <i>id</i> <b>ethernet</b> [ <i>evc-id</i> ] <b>Example:</b> Router(config-if)# service instance 1 ethernet	Configures an Ethernet service instance on an interface and enters service instance configuration mode.
Step 5	<b>encapsulation dot1q</b> <i>vlan-id</i> [, <i>vlan-id</i> [- <i>vlan-id</i> ]] <b>Example:</b> Router(config-if-srv)# encapsulation dot1q 100	Enables IEEE 802.1Q encapsulation of traffic on a specified subinterface in a VLAN.
Step 6	<b>bridge-domain</b> <i>bridge-id</i> [ <b>split-horizon</b> [ <b>group</b> <i>group-id</i> ]] <b>Example:</b> Router(config-if-srv)# bridge-domain 100	Binds a service instance to a bridge domain instance. <b>Note</b> The one split-horizon group is supported on the Cisco ASR 900 RSP3 Module.
Step 7	<b>mac static address</b> <i>mac-addr</i> <b>Example:</b> Router(config-if-srv)# mac static address 0000.bbbb.cccc	Configures a static MAC address.
Step 8	<b>exit</b> <b>Example:</b> Router(config-if-srv)# exit	Returns the CLI to privileged EXEC mode.

## Example for Configuring a Static MAC Address on a Service Instance

```

Router> enable
Router# configure terminal
Router(config)# interface GigabitEthernet 0/2/1
Router(config-if)# service instance 1 ethernet
Router(config-if-srv)# encapsulation dot1q 100
Router(config-if-srv)# bridge-domain 100
Router(config-if-srv)# mac static address 0000.bbbb.cccc
Router(config-if-srv)# exit

```

## Verifying Configured Static MAC Addresses on a Service Instance

Use one or more of the following commands to verify the configured static MAC address on a service instance:

- **show bridge-domain**
- **show mac address-table**

## Example: Verifying Configured Static MAC Addresses on a Service Instance

### show bridge-domain

The sample output for the **show bridge-domain** command:

```
Router# show bridge-domain 10 mac static address

Bridge-Domain ID : 10
Static MAC count : System : 1, bridge-domain : 1

Port                               Address           Action
Gi0/3/7 ServInst 10                aaa1.123c.bc32
```

### show mac address-table

The sample output for the **show mac address-table** command:

```
Router# show mac address-table bdomain 10

Nile Mac Address Entries

BD      mac addr          type      ports
-----
10      aaa1.123c.bc32    STATIC   Gi0/3/7.Efp10
```

## Additional References

### Related Documents

Related Topic	Document Title
Configuration guide	<i>Cisco IOS Carrier Ethernet Configuration Guide</i> , Cisco IOS XE Release (ASR 903)
Carrier Ethernet commands: complete command syntax, command mode, command history, defaults, usage guidelines, and examples	<i>Cisco IOS Carrier Ethernet Command Reference</i>
Cisco IOS commands: master list of commands with complete command syntax, command mode, command history, defaults, usage guidelines, and examples	<a href="#">Cisco IOS Master Command List, All Releases</a>

### Standards

Standard	Title
None	--



**MIBs**

MIB	MIBs Link
None	To locate and download MIBs for selected platforms, Cisco software releases, and feature sets, use Cisco MIB Locator found at the following URL: <a href="http://www.cisco.com/go/mibs">http://www.cisco.com/go/mibs</a>

**RFCs**

RFC	Title
None	--

**Technical Assistance**

Description	Link
The Cisco Support and Documentation website provides online resources to download documentation, software, and tools. Use these resources to install and configure the software and to troubleshoot and resolve technical issues with Cisco products and technologies. Access to most tools on the Cisco Support and Documentation website requires a Cisco.com user ID and password.	<a href="http://www.cisco.com/cisco/web/support/index.html">http://www.cisco.com/cisco/web/support/index.html</a>

## Feature Information for Static MAC Address Support on Service Instances

The following table provides release information about the feature or features described in this module. This table lists only the software release that introduced support for a given feature in a given software release train. Unless noted otherwise, subsequent releases of that software release train also support that feature.

Use Cisco Feature Navigator to find information about platform support and Cisco software image support. To access Cisco Feature Navigator, go to [www.cisco.com/go/cfn](http://www.cisco.com/go/cfn). An account on Cisco.com is not required.

**Table 8: Feature Information for Static MAC Address Support on Service Instances**

Feature Name	Releases	Feature Information
Static MAC Address Support on Service Instances	Cisco IOS XE Release 3.7S	The Static MAC Address Support on Service Instances feature supports configuration of a static MAC address on a pseudoport. Use of a static MAC address for BNG upstream traffic enables traffic forwarding while conserving MAC table resources and limiting traffic flooding by creating multicast groups.  The following commands were introduced or modified: <b>mac static address</b> , <b>neighbor</b> , <b>show bridge domain</b> , <b>show ethernet service instance</b>

Any Internet Protocol (IP) addresses and phone numbers used in this document are not intended to be actual addresses and phone numbers. Any examples, command display output, network topology diagrams, and other figures included in the document are shown for illustrative purposes only. Any use of actual IP addresses or phone numbers in illustrative content is unintentional and coincidental. © 2009-2011 Cisco Systems, Inc. All rights reserved.



## CHAPTER 7

# MAC Limiting

This document describes how to configure MAC limiting.

- [Information About Global MAC Address Limiting on Bridge Domain, on page 83](#)
- [Restrictions and Usage Guidelines for the RSP1 and RSP2 Modules, on page 84](#)
- [Restrictions for MAC Limiting for RSP3 Module, on page 85](#)
- [Configuring MAC Limiting, on page 85](#)

## Information About Global MAC Address Limiting on Bridge Domain

MAC address limiting per bridge-domain restricts the number of MAC addresses that the router learns in a bridge-domain on an EFP, pseudowire or trunk EFP to a specified number.



**Note** For the RSP1 and RSP2 modules, the local connect feature is not supported on the Cisco router. However, to simulate a local connect scenario, configure the connecting EFPs on the same bridge domain and disable the mac-learning on the bridge domain by setting the MAC limit to 0. Use the **mac-address-table limit bdomain num maximum 0 action limit** command to disable mac-learning on the router.

When the total number of MAC addresses (dynamic MAC addresses alone for the RSP1 and RSP2 modules and both static and dynamic MAC addresses for the RSP3 modules) in a bridge-domain exceeds the maximum number, then the router takes a violation action. The router either restricts further learning on bridge-domain by itself with a syslog or just intimate the user through a syslog to take further action.

You can enable the following actions when violation occurs:

- **Warning**—The violation is logged as a syslog message and no further action is taken. There is one syslog message received, when the MAC count exceeds the configured limit (exceed notification) and no more syslog messages are received for the bridge-domain (bdomain) unless the violation is no longer valid (drop notification). When you select the warning action, the further learning of new MAC addresses and forwarding of traffic continue to happen irrespective of violation.
- **Limit**—When the Limit option is selected as an action for violation, the MAC learning on the bdomain is disabled when violation occurs. No new MAC addresses are learnt on the bdomain until the recovery mechanism gets started. Even though new MAC addresses are not learned but frames are still flooded

in the system. If user needs to stop flooding, then a sub action flood can also be used along with limit action.




---

**Note** The threshold value must be 80% of the maximum value configured for the recovery mechanism.

---

- Flood—The flood sub action allows the user to disable unknown unicast flooding on a given bdomain. This flood sub action is initiated only when the limit action is configured and violation has occurred. Unknown unicast flooding is disabled only for the interval necessary to limit the entries. Using this option, improves the performance and the flooding is re-enabled when the total number of MAC entries are dropped below the threshold value.
- Shutdown—When the shutdown action is selected, a syslog message is generated and the particular bdomain on which violation occurred is disabled. Hence, all the learning and forwarding of traffic are stopped on the bdomain. The bdomain remain in such state until the feature is explicitly disabled through CLI.




---

**Note** **Warning** is the default action when no action is configured.

---




---

**Note** The functionality of automatic error recovery is *not* supported on the Cisco ASR 900 RSP2 module.

---

For the limit and warning actions, the recovery mechanism is initiated when the total MAC limit count drops to equal or below a threshold value. The threshold value is dependent on the maximum limit configured on bridge domain (the threshold value is 80% of the limit value). The recovery mechanism reverts the action taken during violation. For example, if the MAC address learning is disabled as a violation action, then it will be re-enabled.

If no maximum value or action option is specified through the **mac address-table limit bdomain id maximum num action** command, then the default action (warning) and a default maximum value of 500 is configured.




---

**Note** In the RSP3 module, for a MAC limit of 0 with the action limit, limit flood or shutdown, the violation action occurs when the user configures it irrespective of MAC address learning on the bridge domain. The recovery mechanism is to disable the feature through the **no mac address-table limit bdomain id** command.

---

## Restrictions and Usage Guidelines for the RSP1 and RSP2 Modules

MAC limiting is supported on the following interface types:

- You can apply MAC limiting only to bridge-domains.

- MAC limiting is supported for dynamic MAC addresses.

## Restrictions for MAC Limiting for RSP3 Module

- Bridge domain MAC limit and EFP MAC Security are not supported together on a bridge domain.
- The change in split horizon group configuration is not supported on the bridge domain if the MAC limit is already configured on that domain.
- A maximum number of four unique MAC limit values can be configured at any time. Many bridge domains can use the same values but it cannot be shared with a bridge domain interface. If the bridge domain interface is added to the existing bridge domain MAC limit configuration, then the configuration should be removed and added again.
- On a Trunk EFP, if the violation is noticed on atleast one of the bridge domains, then the violation action applies to the whole Trunk EFP. If one bridge domain has the action limit, the limit flood or the shutdown action exceeds, then the whole Trunk EFP's MAC learning is disabled.
- The allowed MAC limit range is from 0 through 0xFFFFD.
- The MAC limit on the bridge domain interface needs to be configured to a value higher than the actual maximum limit value that is expected. This is because an internal static MAC is added if the bridge domain interface has an IP configured or the corresponding bridge domain is a part of L2VPN. This will be taken into account for MAC limit.
- The action warning is applied based on the software learning and a delay of approximately 1 minute is observed while generating syslog on a normal bridge domain.
- The delay in the drop notification is based on the software again and the delay is approximately 1 minute for the syslog generation.
- In case of MAC limit 0, static MACs are allowed to be added even after the limit exceeds, only if the bridge domain is UP.

## Configuring MAC Limiting

### SUMMARY STEPS

1. **configure terminal**
2. **mac address-table limit** *bdomain id* *maximum num* *action* {*warning* | *limit* | *shutdown*} [*flood*]
3. **end**
4. **show mac address-table limit bdomain** *bdomain id*
5. **copy running-config startup-config**

### DETAILED STEPS

	Command or Action	Purpose
Step 1	<b>configure terminal</b>	Enter global configuration mode.

	Command or Action	Purpose
Step 2	<code>mac address-table limit bdomain id maximum num action {warning   limit   shutdown} [flood]</code>	Sets the specific limit and any optional actions to be imposed at the bridge-domain level.  The default <b>maximum</b> value is 500.
Step 3	<code>end</code>	Return to privileged EXEC mode.
Step 4	<code>show mac address-table limit bdomain bdomain id</code>	Displays the information about the MAC-address table.
Step 5	<code>copy running-config startup-config</code>	(Optional) Save your entries in the configuration file.

## Example of Enabling Per-Bridge-Domain MAC Limiting

This example shows how to enable per-bridge-domain MAC limiting.

```
Router# enable
Router# configure terminal
Router(config)# mac address-table limit bdomain 10 maximum 100 action limit flood
Router(config)# end
```

## Verifying the MAC Limiting on Bridge Domain

Use the `show mac address-table limit` command to verify the information related to configured MAC limit per bridge domain.

This example shows how to display the information related to configured MAC limit per bridge domain.

```
Router#show mac address-table limit bdomain 10
-----+-----+-----+-----+-----+-----
 bdomain      action      flood      maximum      Total entries      Current state
-----+-----+-----+-----+-----+-----
      10          limit      Disable          100              0              Within Limit
```



### Note

There is a delay of about 1 minute to display the value for the **Total Entries** field, as the **Total Entries** value is derived based on the software learning on the RSP3 module.



## CHAPTER 8

# PPPoE on Bridge Domain Interface

The PPPoE on Bridge Domain Interface feature enables configuration and initiation over a VLAN domain. PPPoE over BDI allows clients to establish an authentic and secured PPPoE session with the remote PPPoE server over a VLAN domain.

- [Finding Feature Information, on page 87](#)
- [Prerequisites for PPPoE on BDI, on page 87](#)
- [Restrictions for PPPoE on BDI, on page 87](#)
- [How to Enable and Configure PPPoE on BDI, on page 88](#)
- [Configuration Examples for PPPoE on BDI, on page 90](#)
- [Additional References, on page 91](#)
- [Feature Information for PPPoE on BDI, on page 92](#)

## Finding Feature Information

Your software release may not support all the features documented in this module. For the latest caveats and feature information, see [Bug Search Tool](#) and the release notes for your platform and software release. To find information about the features documented in this module, and to see a list of the releases in which each feature is supported, see the feature information table.

Use Cisco Feature Navigator to find information about platform support and Cisco software image support. To access Cisco Feature Navigator, go to [www.cisco.com/go/cfn](http://www.cisco.com/go/cfn). An account on Cisco.com is not required.

## Prerequisites for PPPoE on BDI

Before you can configure the PPPoE on BDI feature, enable PPPoE, and specify a virtual template for PPPoE sessions.

## Restrictions for PPPoE on BDI

- PPPoE is supported only on BDIs created over the Ethernet ports.
- PPPoE is *not* supported on the Cisco ASR 900 Series RSP3 module.
- One PPPoE client is supported per node/router.

- PPPoE client over BDI is used to get configuration file from server over vlan domain. The BDI or the virtual interface used by PPPoE client should not be used for routing.
- PPPoE server is *not* supported.
- PAP and CHAP are the supported authentication methods.
- Traceback messages appear when PPPoE session is initiated over the BDI tagged interface. You need to clear the PPPoE traceback error messages from the server side.

## How to Enable and Configure PPPoE on BDI

### Limiting PPPoE Sessions from a MAC Address

To set the limit of sessions to be sourced from a MAC address, use the following command in VPDN configuration mode:

Command	Purpose
Router(config-if)# <b>pppoe session-limit per-mac</b> number	Sets the limit of sessions to be sourced from a MAC address.

### Creating and Configuring a Virtual Template

The Virtual Template Interface Service feature provides a generic service that can be used to apply predefined interface configurations (virtual template interfaces).

For example you can enable PPP authentication on the virtual template using the **ppp authentication chap** command to be used for PPPoE session.

PPPoE session can be enabled using virtual template or using Dialer interface

To create and configure a virtual template, use the following commands beginning in global configuration mode:

#### SUMMARY STEPS

1. Router(config)# **interface virtual-template** number
2. Router(config-if)# **mtu** bytes
3. Router(config-if)# **ip address** negotiated
4. Router(config-if)# **ppp authentication** chap

#### DETAILED STEPS

	Command or Action	Purpose
<b>Step 1</b>	Router(config)# <b>interface virtual-template</b> number	Creates a virtual template, and enters interface configuration mode.



	Command or Action	Purpose
Step 2	Router(config-if)# <i>mtu bytes</i>	Sets the maximum transmission unit (MTU) size for the interface.
Step 3	Router(config-if)# <i>ip address negotiated</i>	Obtains IP address via PPP/IPCP negotiation.
Step 4	Router(config-if)# <b>ppp authentication chap</b>	Sets the maximum transmission unit (MTU) size for the interface.

## Creating and Configuring Dialer Interface

Use pppoe client dialer interface to initiate the pppoe session.

Command	Purpose
Router (config) # <b>interface dialer</b> <i>interface-number</i>	Creates a Dialer interface.
Router (config-if) # <b>ip address negotiated</b>	Specifies the IP address Dialer interface as a node in the destination network to be called. The IP address can be obtained during IPCP negotiation.
Router (config-if) # <b>encapsulation ppp</b>	Specifies the PPP encapsulation.
Router (config-if) # <b>dialer pool</b> <i>pool-number</i>	Specifies the dialing pool to use for calls to this destination.
Router (config-if) # <b>dialer-group</b> <i>group-number</i>	Assigns the Dialer interface to a dialer group. This applies the specified traffic definition to the interface.
Router (config-if) # <b>[no] cdp enable</b>	Enables Cisco Discovery Protocol (CDP) on the interface.
Router (config-if) # <b>ppp authentication pap</b> <b>chap</b> [ <i>callin</i> ]	Specifies the PPP authentication method. This is only needed if you are not doing CLID or DNIS-based binding.
Router (config-if) # <b>ppp pap sent-username</b> <i>user-name</i> <b>password</b> <i>password</i>	Specifies the PPP user-name and password for the Password Authentication Protocol (PAP).
Router (config-if) # <b>ppp chap hostname</b> <i>hostname</i>	Specifies the PPP Challenge Handshake Authentication Protocol (CHAP) hostname.
Router (config-if) # <b>ppp chap password</b> <i>password</i>	Specifies the PPP CHAP password.

## Enabling PPPoE on a BDI

To enable PPPoE on BDI, use the following command in global configuration mode:

Command	Purpose
Router# <b>interface bdi1</b>	Specifies a bridge domain interface on the router.
Router# <b>pppoe enable</b>	Specifies the group to be used for establishing PPPoE sessions.
Router# <b>pppoe-client dial-pool-number 1</b>	Configures a PPP over Ethernet (PPPoE) client and specifies the dialer interface.  <b>Note</b> If a PPPoE profile is not assigned to the interface by using the group group-name option, then interface use the default global PPPoE profile.

## Displaying the PPPoE Session Information

To monitor the PPPoE session, use the following commands in EXEC mode:

Command	Purpose
Router# <b>show pppoe session</b>	Displays PPPoE session details with remote as well as local MAC and session count details.

## Configuration Examples for PPPoE on BDI

### Specifying Dialer Interface for PPPoE Session

```
interface Dialer1
 ip address negotiated
 encapsulation ppp
 dialer pool 1
 dialer-group 1
 no cdp enable
 ppp authentication pap chap callin
 ppp pap sent-username r1 password r2
 ppp chap hostname r1
 ppp chap password r2
```

### Enabling PPPoE on a BDI—Example

The following example enables PPPoE on a BDI:

```
interface bdi1
 pppoe enable
 pppoe-client dial-pool-number 1
```

## Specifying Virtual Template for PPPoE Session—Example

The following example specifies virtual template for PPPoE session:

```
bba-group pppoe global
virtual-template 1

interface Virtual-Template1
mtu 1492
ip address negotiated
ppp authentication pap
ppp pap sent-username r1 password 0 r2

inter BDI10
pppoe enable group global
no shut
```

## Additional References

The following sections provide references related to the PPPoE on BDI feature.

### Related Documents

Related Topic	Document Title
Configuring PPPoE on ATM	PPPoE over ATM
Configuring PPPoE on IEEE 802.1Q encapsulation	PPPoE Over IEEE 802.1Q VLANs

### Standards

Standard	Title
No new or modified standards are supported by this feature, and support for existing standards has not been modified by this feature.	—

### MIBs

MIB	MIBs Link
No new or modified MIBs are supported by this feature, and support for existing MIBs has not been modified by this feature.	To locate and download MIBs for selected platforms, Cisco IOS XE releases, and feature sets, use Cisco MIB Locator found at the following URL:  <a href="http://www.cisco.com/go/mibs">http://www.cisco.com/go/mibs</a>

### RFCs

RFC	Title
RFC 2516	<i>A Method for Transmitting PPPoE</i>

RFC	Title
RFC 4813	Multiprotocol Encapsulation over ATM Adaptation Layer 5

### Technical Assistance

Description	Link
<p>The Cisco Support website provides extensive online resources, including documentation and tools for troubleshooting and resolving technical issues with Cisco products and technologies.</p> <p>To receive security and technical information about your products, you can subscribe to various services, such as the Product Alert Tool (accessed from Field Notices), the Cisco Technical Services Newsletter, and Really Simple Syndication (RSS) Feeds.</p> <p>Access to most tools on the Cisco Support website requires a Cisco.com user ID and password.</p>	<a href="http://www.cisco.com/techsupport">http://www.cisco.com/techsupport</a>

## Feature Information for PPPoE on BDI

The following table provides release information about the feature or features described in this module. This table lists only the software release that introduced support for a given feature in a given software release train. Unless noted otherwise, subsequent releases of that software release train also support that feature.

Use Cisco Feature Navigator to find information about platform support and Cisco software image support. To access Cisco Feature Navigator, go to [www.cisco.com/go/cfn](http://www.cisco.com/go/cfn). An account on Cisco.com is not required.

**Table 9: Feature Information for PPPoE on BDI**

Feature Name	Releases	Feature Information
PPPoE on BDI	Cisco IOS XE Release 3.15.0S	This feature was introduced on the Cisco ASR 920 Series Aggregation Services Router (all variants).