



Writing Embedded Event Manager Policies Using the Cisco IOS CLI

Last Updated: September 06, 2011

This module describes how to write Embedded Event Manager (EEM) policies using Cisco IOS command-line interface (CLI) applets to handle Cisco IOS software faults and events. EEM is a distributed and customized approach to event detection and recovery offered directly in a Cisco IOS device. EEM offers the ability to monitor events and take informational, corrective, or any desired action when the monitored events occur or when a threshold is reached. The EEM policy engine receives notifications when faults and other events occur. EEM policies implement recovery on the basis of the current state of the system and the actions specified in the policy for a given event. Recovery actions are triggered when the policy is run.

- [Finding Feature Information, page 1](#)
- [Prerequisites for Writing EEM Policies Using the Cisco IOS CLI, page 2](#)
- [Information About Writing EEM Policies Using the Cisco IOS CLI, page 2](#)
- [How to Write EEM Policies Using the Cisco IOS CLI, page 14](#)
- [Configuration Examples for Writing EEM Policies Using the Cisco IOS CLI, page 69](#)
- [Where to Go Next, page 86](#)
- [Additional References, page 86](#)
- [Feature Information for Writing EEM Policies Using the Cisco IOS CLI, page 88](#)

Finding Feature Information

Your software release may not support all the features documented in this module. For the latest feature information and caveats, see the release notes for your platform and software release. To find information about the features documented in this module, and to see a list of the releases in which each feature is supported, see the Feature Information Table at the end of this document.

Use Cisco Feature Navigator to find information about platform support and Cisco software image support. To access Cisco Feature Navigator, go to www.cisco.com/go/cfn. An account on Cisco.com is not required.

Prerequisites for Writing EEM Policies Using the Cisco IOS CLI

- Before writing EEM policies, you should be familiar with the concepts explained in the “Embedded Event Manager Overview” module.
- If the **action cns-event** command is used, access to a Cisco Networking Services (CNS) Event gateway must be configured.
- If the **action force-switchover** command is used, a secondary processor must be configured on the device.
- If the **action snmp-trap** command is used, the **snmp-server enable traps event-manager** command must be enabled to permit SNMP traps to be sent from the Cisco IOS device to the SNMP server. Other relevant **snmp-server** commands must also be configured; for details see the **action snmp-trap** command page.

Information About Writing EEM Policies Using the Cisco IOS CLI

- [Embedded Event Manager Policies, page 2](#)
- [Embedded Event Manager Built-In Environment Variables Used in EEM Applets, page 3](#)

Embedded Event Manager Policies

EEM offers the ability to monitor events and take informational or corrective action when the monitored events occur or a threshold is reached. An EEM policy is an entity that defines an event and the actions to be taken when that event occurs. There are two types of EEM policies: an applet or a script. An applet is a simple form of policy that is defined within the CLI configuration. A script is a form of policy that is written in Tool Command Language (Tcl).

- [EEM Applet, page 2](#)
- [EEM Script, page 3](#)

EEM Applet

An EEM applet is a concise method for defining event screening criteria and the actions to be taken when that event occurs. In applet configuration mode, three types of configuration statements are supported. The **event** commands are used to specify the event criteria to trigger the applet to run, the **action** commands are used to specify an action to perform when the EEM applet is triggered, and the **set** command is used to set the value of an EEM applet variable. Currently only the `_exit_status` variable is supported for the **set** command.

Only one **event** configuration command is allowed within an applet configuration. When applet configuration mode is exited and no **event** command is present, a warning is displayed stating that no event is associated with this applet. If no event is specified, this applet is not considered registered. When no action is associated with this applet, events are still triggered but no actions are performed. Multiple **action**

configuration commands are allowed within an applet configuration. Use the **show event manager policy registered** command to display a list of registered applets.

Before modifying an EEM applet, be aware that the existing applet is not replaced until you exit applet configuration mode. While you are in applet configuration mode modifying the applet, the existing applet may be executing. It is safe to modify the applet without unregistering it. When you exit applet configuration mode, the old applet is unregistered and the new version is registered.

The action configuration commands are uniquely identified using the *label* argument, which can be any string value. Actions are sorted in ascending alphanumeric key sequence using the *label* argument as the sort key, and they are run using this sequence.

The Embedded Event Manager schedules and runs policies on the basis of an event specification that is contained within the policy itself. When applet configuration mode is exited, EEM examines the **event** and **action** commands that are entered and registers the applet to be run when a specified event occurs.

EEM Script

Scripts are defined off the networking device using an ASCII editor. The script is then copied to the networking device and registered with EEM. Tcl scripts are supported by EEM.

EEM allows you to write and implement your own policies using Tcl. Writing an EEM policy involves:

- Selecting the event for which the policy is run.
- Defining the event detector options associated with logging and responding to the event.
- Choosing the actions to be followed when the event occurs.

Cisco provides enhancements to Tcl in the form of keyword extensions that facilitate the development of EEM policies. The main categories of keywords identify the detected event, the subsequent action, utility information, counter values, and system information. For more details about writing EEM policies using Tcl, see the “Writing Embedded Event Manager Policies Using Tcl” module.

Embedded Event Manager Built-In Environment Variables Used in EEM Applets

EEM built-in environment variables are a subset of the Cisco-defined environment variables and the built-in variables are available to EEM applets only. The built-in variables can be read-only or can be read and write and these variables may apply to one specific event detector or to all event detectors. The table below lists the Cisco built-in environment variables that are read-only alphabetically by event detector and subevent.

Table 1 *EEM Built-In Environment Variables (Read Only)*

Environment Variable	Description
All Events	
_event_id	Unique number that indicates the ID for this published event. Multiple policies may be run for the same event, and each policy will have the same event_id.
_event_type	Type of event.

Environment Variable	Description
_event_type_string	An ASCII string identifier of the event type that triggered the event.
_event_pub_sec _event_pub_msec	The time, in seconds and milliseconds, at which the event was published to the EEM.
_event_severity	The severity of the event.
Application-Specific Event Detector	
_application_component_id	The event application component identifier.
_application_data1	The value of an environment variable, character text, or a combination of the two to be passed to an application-specific event when the event is published.
_application_data2	The value of an environment variable, character text, or a combination of the two to be passed to an application-specific event when the event is published.
_application_data3	The value of an environment variable, character text, or a combination of the two to be passed to an application-specific event when the event is published.
_application_data4	The value of an environment variable, character text, or a combination of the two to be passed to an application-specific event when the event is published.
_application_sub_system	The event application subsystem number.
_application_type	The type of application.
CLI Event Detector	
_cli_msg	The fully expanded message that triggered the CLI event.
_cli_msg_count	The number of times that a message match occurred before the event was published.
Counter Event Detector	
_counter_name	The name of the counter.
_counter_value	The value of the counter.
Enhanced Object Tracking Event Detector	
_track_number	The number of the tracked object.

Environment Variable	Description
_track_state	The state of the tracked object; down or up.
GOLD Event Detector	
_action_notify	The action notify information in a GOLD event flag; either false or true.
_event_severity	The event severity which can be one of the following; normal, minor, or major.
_gold_bl	The boot diagnostic level, which can be one of the following values: <ul style="list-style-type: none"> • 0: complete diagnostic • 1: minimal diagnostic • 2: bypass diagnostic
_gold_card	The card on which a GOLD failure event was detected.
_gold_cf <i>testnum</i>	Consecutive failure, where <i>testnum</i> is the test number. For example, _gold_cf3 is the EEM built-in environment variable for consecutive failure of test 3.
_gold_ci	Card index.
_gold_cn	Card name.
_gold_ec <i>testnum</i>	Test error code, where <i>testnum</i> is the test number. For example, _gold_ec3 is the EEM built-in environment variable for the error code of test 3.
_gold_lf <i>testnum</i>	Last fail time, where <i>testnum</i> is the test number. For example, _gold_lf3 is the EEM built-in variable for the last fail time of test 3. The time-stamp format is <i>mmm dd yyyy hh:mm:ss</i> . For example, Mar 11 2005 08:47:00.
_gold_new_failure	The new test failure information in a GOLD event flag; either true or false.
_gold_overall_result	The overall diagnostic result, which can be one of the following values: <ul style="list-style-type: none"> • 0: OK • 3: minor error • 4: major error • 14: unknown result
_gold_pc	Port counts.

Environment Variable	Description
_gold_rc <i>testnum</i>	Test total run count, where <i>testnum</i> is the test number. For example, _gold_rc3 is the EEM built-in variable for the total run count of test 3.
_gold_sn	Card serial number.
_gold_sub_card	The subcard on which a GOLD failure event was detected.
_gold_ta <i>testnum</i>	Test attribute, where <i>testnum</i> is the test number. For example, _gold_ta3 is the EEM built-in variable for the test attribute of test 3.
_gold_tc	Test counts.
_gold_tf <i>testnum</i>	Total failure count, where <i>testnum</i> is the test number. For example, _gold_tf3 is the EEM built-in variable for the total failure count of test 3.
_gold_tn <i>testnum</i>	Test name, where <i>testnum</i> is the test number. For example, _gold_tn3 is the EEM built-in variable for the name of test 3.
_gold_tr <i>testnum</i>	<p>Test result, where <i>testnum</i> is the test number. For example, _gold_tr6 is the EEM built-in variable for test 6, where test 6 is not a per-port test and not a per-device test.</p> <p>The test result is one of the following values:</p> <ul style="list-style-type: none"> • P: diagnostic result Pass • F: diagnostic result Fail • U: diagnostic result Unknown
_gold_tr <i>testnum d devnum</i>	<p>Per-device test result, where <i>testnum</i> is the test number and <i>devnum</i> is the device number. For example, _gold_tr3d20 is the EEM built-in variable for the test result for test 3, device 20.</p> <p>The test result is one of the following values:</p> <ul style="list-style-type: none"> • P: diagnostic result Pass • F: diagnostic result Fail • U: diagnostic result Unknown

Environment Variable	Description
<code>_gold_tr</code> <i>testnum</i> <code>p</code> <i>portnum</i>	Per-port test result, where <i>testnum</i> is the test number and <i>portnum</i> is the port number. For example, <code>_gold_tr5p20</code> is the EEM built-in variable for the test result for test 5, port 20. The test result is one of the following values: <ul style="list-style-type: none"> • P: diagnostic result Pass • F: diagnostic result Fail • U: diagnostic result Unknown
<code>_gold_tt</code>	The testing type, which can be one of the following: <ul style="list-style-type: none"> • 1: a boot diagnostic • 2: an on-demand diagnostic • 3: a schedule diagnostic • 4: a monitoring diagnostic
Interface Counter Event Detector	
<code>_interface_is_increment</code>	A value to indicate whether the current interface counter value is an absolute value (0) or an increment value (1).
<code>_interface_name</code>	The name of the interface to be monitored.
<code>_interface_parameter</code>	The name of the interface counter to be monitored.
<code>_interface_value</code>	A value with which the current interface counter value is compared.
None Event Detector	
<code>_event_id</code>	A value of 1 indicates an insertion event; a value of 2 indicates a removal event.

Environment Variable	Description
<code>_none_argc</code>	The parameters that are passed from the XML SOAP command to the script.
<code>_none_arg1</code>	
<code>_none_arg2</code>	
<code>_none_arg3</code>	
<code>_none_arg4</code>	
<code>_none_arg5</code>	
<code>_none_arg6</code>	
<code>_none_arg7</code>	
<code>_none_arg8</code>	
<code>_none_arg9</code>	
<code>_none_arg10</code>	
<code>_none_arg11</code>	
<code>_none_arg12</code>	
<code>_none_arg13</code>	
<code>_none_arg14</code>	
<code>_none_arg15</code>	
OIR Event Detector	
<code>_oir_event</code>	A value of 1 indicates an insertion event; a value of 2 indicates a removal event.
<code>_oir_slot</code>	The slot number for the OIR event.
Resource Event Detector	
<code>_resource_configured_threshold</code>	The configured ERM threshold.
<code>_resource_current_value</code>	The current value reported by ERM.
<code>_resource_dampen_time</code>	The ERM dampen time, in nanoseconds.
<code>_resource_direction</code>	The ERM event direction. The event direction can be one of the following: up, down, or no change.
<code>_resource_level</code>	The ERM event level. The four event levels are normal, minor, major, and critical.
<code>_resource_notify_data_flag</code>	The ERM notify data flag.
<code>_resource_owner_id</code>	The ERM resource owner ID.
<code>_resource_policy_id</code>	The ERM policy ID.
<code>_resource_policy_violation_flag</code>	The ERM policy violation flag; either false or true.

Environment Variable	Description
_resource_time_sent	The ERM event time, in nanoseconds.
_resource_user_id	The ERM resource user ID.
RF Event Detector	
_rf_event	A value of 0 indicates that this is not an RF event; a value of 1 indicates an RF event.
RPC Event Detector	
_rpc_event	A value of 0 indicates that there is no error; a value of 1 to 83 indicates error.
_rpc_argc	The parameters that are passed from the XML SOAP command to the applet.
_rpc_arg0	
_rpc_arg1	
_rpc_arg2	
_rpc_arg3	
_rpc_arg4	
_rpc_arg5	
_rpc_arg6	
_rpc_arg7	
_rpc_arg8	
_rpc_arg9	
_rpc_arg10	
_rpc_arg11	
_rpc_arg12	
_rpc_arg13	
_rpc_arg14	
SNMP Event Detector	
_snmp_exit_event	A value of 0 indicates that this is not an exit event; a value of 1 indicates an exit event.
_snmp_oid	The SNMP object ID that caused the event to be published.
_snmp_oid_delta_val	The actual incremental difference between the value of the current SNMP object ID and the value when the event was last triggered.
_snmp_oid_val	The SNMP object ID value when the event was published.

Environment Variable	Description
SNMP Notification Event Detector	
<code>_snmp_notif_oid</code>	A user specified object ID.
<code>_snmp_notif_oid_val</code>	A user specified object ID value.
<code>_snmp_notif_src_ip_addr</code>	The source IP address of the SNMP Protocol Data Unit (PDU).
<code>_snmp_notif_dest_ip_addr</code>	The destination IP address of the SNMP PDU.
<code>_x_x_x_x_x_x_x(varbinds)</code>	The SNMP PDU varbind information.
<code>_snmp_notif_trunc_vb_buf</code>	Indicates whether the varbind information has been truncated due to the lack of space in the buffer.
Syslog Event Detector	
<code>_syslog_msg</code>	The syslog message that caused the event to be published.
System Manager (Process) Event Detector	
<code>_process_dump_count</code>	The number of times that a Posix process was dumped.
<code>_process_exit_status</code>	The status of the Posix process at exit.
<code>_process_fail_count</code>	The number of times that a Posix process failed.
<code>_process_instance</code>	The instance number of the Posix process.
<code>_process_last_respawn</code>	The Posix process that was last respawned.
<code>_process_node_name</code>	The node name of the Posix process.
<code>_process_path</code>	The path of the Posix process.
<code>_process_process_name</code>	The name of the Posix process.
<code>_process_respawn_count</code>	The number of times that a Posix process was respawned.
Timer Event Detector	
<code>_timer_remain</code>	The time available before the timer expires. Note This environment variable is not available for the CRON timer.
<code>_timer_time</code>	The time at which the last event was triggered.
<code>_timer_type</code>	The type of timer.

Environment Variable	Description
Watchdog System Monitor (IOSWDSysMon) Event Detector	
_ioswd_node	The slot number for the Route Processor (RP) reporting node.
_ioswd_num_subs	The number of subevents present.
All Watchdog System Monitor (IOSWDSysMon) Subevents	
_ioswd_sub1_present _ioswd_sub2_present	A value to indicate whether subevent 1 or subevent 2 is present. A value of 1 means that the subevent is present; a value of 0 means that the subevent is not present.
_ioswd_sub1_type _ioswd_sub2_type	The event type, either <code>cpu_proc</code> or <code>mem_proc</code> .
Watchdog System Monitor (IOSWDSysMon) <code>cpu_proc</code> Subevents	
_ioswd_sub1_path _ioswd_sub2_path	A process name of subevents.
_ioswd_sub1_period _ioswd_sub2_period	The time period, in seconds and optional milliseconds, used for measurement in subevents.
_ioswd_sub1_pid _ioswd_sub2_pid	The process identifier of subevents.
_ioswd_sub1_taskname _ioswd_sub2_taskname	The task name of subevents.
_ioswd_sub1_value _ioswd_sub2_value	The CPU utilization of subevents measured as a percentage.
Watchdog System Monitor (IOSWDSysMon) <code>mem_proc</code> Subevents	
_ioswd_sub1_diff _ioswd_sub2_diff	A percentage value of the difference that triggered the event. Note This variable is set only when the _ioswd_sub1_is_percent or _ioswd_sub2_is_percent variable contains a value of 1.
_ioswd_sub1_is_percent _ioswd_sub2_is_percent	A number that identifies whether the value is a percentage. A value of 0 means that the value is not a percentage; a value of 1 means that the value is a percentage.
_ioswd_sub1_path _ioswd_sub2_path	The process name of subevents.
_ioswd_sub1_pid _ioswd_sub2_pid	The process identifier of subevents.

Environment Variable	Description
_ioswd_sub1_taskname _ioswd_sub2_taskname	The task name of subevents.
_ioswd_sub1_value _ioswd_sub2_value	The CPU utilization of subevents measured as a percentage.
Watchdog System Monitor (WDSysMon) Event Detector	
_wd_sub1_present _wd_sub2_present	A value to indicate whether subevent 1 or subevent 2 is present. A value of 1 means that the subevent is present; a value of 0 means that the subevent is not present.
_wd_num_subs	The number of subevents present.
_wd_sub1_type _wd_sub2_type	The event type: cpu_proc, cpu_tot, deadlock, dispatch_mgr, mem_proc, mem_tot_avail, or mem_tot_used.
Watchdog System Monitor (WDSysMon) cpu_proc Subevents	
_wd_sub1_node _wd_sub2_node	The slot number for the subevent RP reporting node.
_wd_sub1_period _wd_sub2_period	The time period, in seconds and optional milliseconds, used for measurement in subevents.
_wd_sub1_procname _wd_sub2_procname	The process name of subevents.
_wd_sub1_value _wd_sub2_value	The CPU utilization of subevents measured as a percentage.
Watchdog System Monitor (WDSysMon) cpu_tot Subevents	
_wd_sub1_node _wd_sub2_node	The slot number for the subevent RP reporting node.
_wd_sub1_period _wd_sub2_period	The time period, in seconds and optional milliseconds, used for measurement in subevents.
_wd_sub1_value _wd_sub2_value	The CPU utilization of subevents measured as a percentage.
Watchdog System Monitor (WDSysMon) deadlock Subevents	
_wd_sub1_entry_ [1-N]_b_node _wd_sub2_entry_ [1-N]_b_node	The slot number for the subevent RP reporting node.
_wd_sub1_entry_ [1-N]_b_pid _wd_sub2_entry_ [1-N]_b_pid	The process identifier of subevents.

Environment Variable	Description
<code>_wd_sub1_entry_ [1-N]_b_procname</code> <code>_wd_sub2_entry_[1-N]_b_procname</code>	The process name of subevents.
<code>_wd_sub1_entry_ [1-N]_b_tid</code> <code>_wd_sub2_entry_[1-N]_b_tid</code>	The time identifier of subevents.
<code>_wd_sub1_entry_ [1-N]_node</code> <code>_wd_sub2_entry_[1-N]_node</code>	The slot number for the subevent RP reporting node.
<code>_wd_sub1_entry_ [1-N]_pid</code> <code>_wd_sub2_entry_[1-N]_pid</code>	The process identifier of subevents.
<code>_wd_sub1_entry_ [1-N]_procname</code> <code>_wd_sub2_entry_[1-N]_procname</code>	The process name of subevents.
<code>_wd_sub1_entry_ [1-N]_state</code> <code>_wd_sub2_entry_[1-N]_state</code>	The time identifier of subevents.
<code>_wd_sub1_entry_ [1-N]_tid</code> <code>_wd_sub2_entry_[1-N]_tid</code>	The time identifier of subevents.
<code>_wd_sub1_num_entries</code> <code>_wd_sub2_num_entries</code>	The number of subevents.
Watchdog System Monitor (WDSysMon) dispatch manager Subevents	
<code>_wd_sub1_node</code> <code>_wd_sub2_node</code>	The slot number for the subevent RP reporting node.
<code>_wd_sub1_period</code> <code>_wd_sub2_period</code>	The time period, in seconds and optional milliseconds, used for measurement in subevents.
<code>_wd_sub1_procname</code> <code>_wd_sub2_procname</code>	The process name of subevents.
<code>_wd_sub1_value</code> <code>_wd_sub2_value</code>	The CPU utilization of subevents measured as a percentage.
Watchdog System Monitor (WDSysMon) mem_proc Subevents	
<code>_wd_sub1_diff</code> <code>_wd_sub2_diff</code>	A percentage value of the difference that triggered the event. Note This variable is set only when the <code>_wd_sub1_is_percent</code> or <code>_wd_sub2_is_percent</code> variable contains a value of 1.
<code>_wd_sub1_is_percent</code> <code>_wd_sub2_is_percent</code>	A number that identifies whether the value is a percentage. A value of 0 means that the value is not a percentage; a value of 1 means that the value is a percentage.

Environment Variable	Description
<code>_wd_sub1_node _wd_sub2_node</code>	The slot number for the subevent RP reporting node.
<code>_wd_sub1_period _wd_sub2_period</code>	The time period, in seconds and optional milliseconds, used for measurement in subevents.
<code>_wd_sub1_pid _wd_sub2_pid</code>	The process identifier of subevents.
<code>_wd_sub1_procname _wd_sub2_procname</code>	The process name of subevents.
<code>_wd_sub1_value _wd_sub2_value</code>	The CPU utilization of subevents measured as a percentage.
Watchdog System Monitor (WDSysMon) mem_tot_avail and mem_tot_used Subevents	
<code>_wd_sub1_avail _wd_sub2_avail</code>	The memory available for subevents.
<code>_wd_sub1_diff _wd_sub2_diff</code>	A percentage value of the difference that triggered the event. Note This variable is set only when the <code>_wd_sub1_is_percent</code> or <code>_wd_sub2_is_percent</code> variable contains a value of 1.
<code>_wd_sub1_is_percent _wd_sub2_is_percent</code>	A number that identifies whether the value is a percentage. A value of 0 means that the value is not a percentage; a value of 1 means that the value is a percentage.
<code>_wd_sub1_node _wd_sub2_node</code>	The slot number for the subevent RP reporting node.
<code>_wd_sub1_period _wd_sub2_period</code>	The time period, in seconds and optional milliseconds, used for measurement in subevents.
<code>_wd_sub1_value _wd_sub2_value</code>	The CPU utilization of subevents measured as a percentage.
<code>_wd_sub1_used _wd_sub2_used</code>	The memory used by subevents.

How to Write EEM Policies Using the Cisco IOS CLI

- [Registering and Defining an Embedded Event Manager Applet, page 15](#)
- [Registering and Defining an Embedded Event Manager Policy to Run Manually, page 19](#)
- [Unregistering Embedded Event Manager Policies, page 21](#)
- [Suspending All Embedded Event Manager Policy Execution, page 23](#)
- [Configuring and Tracking a Stub Object Using Embedded Event Manager, page 24](#)
- [Displaying Embedded Event Manager History Data, page 27](#)

- [Displaying Embedded Event Manager Registered Policies, page 28](#)
- [Configuring Event SNMP Notification, page 30](#)
- [Configuring Multiple Event Support, page 31](#)
- [Configuring EEM Class-Based Scheduling, page 33](#)
- [Configuring EEM Applet \(Interactive CLI\) Support, page 43](#)
- [Configuring SNMP Library Extensions, page 47](#)
- [Configuring Variable Logic for EEM Applets, page 56](#)
- [Configuring Event SNMP Object, page 64](#)
- [Disabling AAA Authorization, page 67](#)
- [Configuring Description of an Embedded Event Manager Applet, page 68](#)

Registering and Defining an Embedded Event Manager Applet

Perform this task to register an applet with Embedded Event Manager and to define the EEM applet using the Cisco IOS CLI **event** and **action** commands. Only one **event** command is allowed in an EEM applet. Multiple **action** commands are permitted. If no **event** and no **action** commands are specified, the applet is removed when you exit configuration mode.

The SNMP event detector and the syslog **action** commands used in this task are just representing any event detector and **action** commands. For examples using other event detectors and **action** commands, see the [Embedded Event Manager Applet Configuration Examples, page 70](#).

- [EEM Environment Variables, page 15](#)
- [Alphabetical Order of EEM Action Labels, page 16](#)
- [Troubleshooting Tips, page 19](#)

EEM Environment Variables

EEM environment variables for EEM policies are defined using the EEM **event manager environment** configuration command. By convention, all Cisco EEM environment variables begin with “_”. In order to avoid future conflict, customers are urged not to define new variables that start with “_”.

You can display the EEM environment variables set on your system by using the **show event manager environment** privileged EXEC command.

For example, you can create EEM policies that can send e-mails when an event occurs. The table below describes the e-mail-specific environment variables that can be used in EEM policies.

Table 2 *EEM E-mail-Specific Environmental Variables*

Environment Variable	Description	Example
<code>_email_server</code>	A Simple Mail Transfer Protocol (SMTP) mail server used to send e-mail.	The e-mail server name-- Mailservername-- can be in any one of the following template formats: <ul style="list-style-type: none"> • <code>username:password@host</code> • <code>username@host</code> • <code>host</code>

Environment Variable	Description	Example
<code>_email_to</code>	The address to which e-mail is sent.	engineering@example.com
<code>_email_from</code>	The address from which e-mail is sent.	devtest@example.com
<code>_email_cc</code>	The address to which the e-mail is copied.	manager@example.com

Alphabetical Order of EEM Action Labels

An EEM action label is a unique identifier that can be any string value. Actions are sorted and run in ascending alphanumeric (lexicographical) key sequence using the label as the sort key. If you are using numbers as labels be aware that alphanumeric sorting will sort 10.0 after 1.0, but before 2.0, and in this situation we recommend that you use numbers such as 01.0, 02.0, and so on, or use an initial letter followed by numbers.

SUMMARY STEPS

1. **enable**
2. **show event manager environment** [**all** *variable-name*]
3. **configure terminal**
4. **event manager environment** *variable-name string*
5. Repeat [Alphabetical Order of EEM Action Labels, page 16](#) for all the required environment variables.
6. **event manager applet** *applet-name*
7. Do one of the following:
 - **event snmp oid** *oid-value get-type {exact|next} entry-op operator entry-val entry-value[exit-comb|and]}* [**exit-op** *operator*] [**exit-val** *exit-value*] [**exit-time** *exit-time-value*] **poll-interval** *poll-int-value*
8. **action label cli command** *cli-string* [**pattern** *pattern-string*]
9. **action label syslog** [**priority** *priority-level*] **msg** *msg-text* **facility** *string*
10. **action label mail server** *server-address* **to** *to-address* **from** *from-address* [**cc** *cc-address*] **subject** *subject* **body** *body-text*
11. Add more action commands as required.
12. **end**

DETAILED STEPS

Command or Action	Purpose
Step 1 enable Example: Router> enable	Enables privileged EXEC mode. <ul style="list-style-type: none"> • Enter your password if prompted.

	Command or Action	Purpose
Step 2	<p>show event manager environment [all] <i>variable-name</i>]</p> <p>Example:</p> <pre>Router# show event manager environment all</pre>	<p>(Optional) Displays the name and value of EEM environment variables.</p> <ul style="list-style-type: none"> The optional all keyword displays all the EEM environment variables. The optional <i>variable-name</i> argument displays information about the specified environment variable.
Step 3	<p>configure terminal</p> <p>Example:</p> <pre>Router# configure terminal</pre>	Enters global configuration mode.
Step 4	<p>event manager environment <i>variable-name string</i></p> <p>Example:</p> <pre>Router(config)# event manager environment _email_to engineering@example.com</pre>	<p>Configures the value of the specified EEM environment variable.</p> <ul style="list-style-type: none"> In this example, the environment variable that holds the e-mail address to which e-mail is sent is set to <code>engineering@example.com</code>.
Step 5	Repeat Alphabetical Order of EEM Action Labels, page 16 for all the required environment variables.	Repeat Alphabetical Order of EEM Action Labels, page 16 to configure all the environment variables required by the policy to be registered in Alphabetical Order of EEM Action Labels, page 16 .
Step 6	<p>event manager applet <i>applet-name</i></p> <p>Example:</p> <pre>Router(config)# event manager applet memory- fail</pre>	Registers the applet with the Embedded Event Manager (EEM) and enters applet configuration mode.
Step 7	<p>Do one of the following:</p> <ul style="list-style-type: none"> event snmp oid <i>oid-value</i> get-type {exact next} entry-op <i>operator</i> entry-val <i>entry-value</i>[exit-comb and]} [exit-op <i>operator</i>] [exit-val <i>exit-value</i>] [exit-time <i>exit-time-value</i>] poll-interval <i>poll-int-value</i> <p>Example:</p> <pre>Router(config-applet)# event snmp oid 1.3.6.1.4.1.9.9.48.1.1.1.6.1 get-type exact entry-op lt entry-val 5120000 poll-interval 90</pre>	<p>Specifies the event criteria that cause the EEM applet to run.</p> <ul style="list-style-type: none"> In this example, an EEM event is triggered when free memory falls below the value of 5120000. Exit criteria are optional, and if not specified, event monitoring is reenabled immediately.

Command or Action	Purpose
<p>Step 8 <code>action label cli command <i>cli-string</i> [pattern <i>pattern-string</i>]</code></p> <p>Example:</p> <pre>Router(config-applet)# action 1.0 cli command "enable"</pre> <p>Example:</p> <pre>Router(config-applet)# action 2.0 cli command "clear counters Ethernet0/1" pattern "confirm"</pre> <p>Example:</p> <pre>Router(config-applet)# action 3.0 cli command "y"</pre>	<p>Specifies the action of executing a Cisco IOS CLI command when an EEM applet is triggered.</p> <p>The pattern keyword is optional and is used only when the command string solicits input. The action cli command ends when the solicited prompt as specified in the optional pattern keyword is received. You are required to specify a regular expression pattern that will match the next solicited prompt. Specification of an incorrect pattern will cause the action cli command to wait forever until the applet execution times out due to the maxrun timer expiration.</p> <ul style="list-style-type: none"> The action taken is to specify an EEM applet to run when the pattern keyword specifies the <i>confirm</i> argument for the clear counters Ethernet0/1 command. In this case the command string solicits input, such as “confirm,” which has to be completed with a “yes” or a “no” input.
<p>Step 9 <code>action label syslog [priority <i>priority-level</i>] msg <i>msg-text</i> facility <i>string</i></code></p> <p>Example:</p> <pre>Router(config-applet)# action 1.0 syslog priority critical msg "Memory exhausted; current available memory is \$_snmp_oid_val bytes"</pre> <p>Example:</p> <pre>Router(config-applet)# action 1.0 syslog priority errors facility EEM-FAC message "TEST MSG"</pre>	<p>Specifies the action to be taken when an EEM applet is triggered. In this example, the action taken is to write a message to syslog.</p> <ul style="list-style-type: none"> The optional priority keyword specifies the priority level of the syslog messages. If selected, the <i>priority-level</i> argument must be defined. The <i>msg-text</i> argument can be character text, an environment variable, or a combination of the two. The facility keyword specifies the location of generated message The <i>string</i> argument can be character text, an environment variable, or a combination of the two.

Command or Action	Purpose
<p>Step 10 <code>action label mail server server-address to-address from from-address [cc cc-address] subject subject body body-text</code></p> <p>Example:</p> <pre>Router(config-applet)# action 2.0 mail server 192.168.1.10 to engineering@example.com from devtest@example.com subject "Memory failure" body "Memory exhausted; current available memory is \$_snmp_oid_val bytes"</pre>	<p>Specifies the action of sending a short e-mail when an EEM applet is triggered.</p> <ul style="list-style-type: none"> • The <i>server-address</i> argument specifies the fully qualified domain name of the e-mail server to be used to forward the e-mail. • The <i>to-address</i> argument specifies the e-mail address where the e-mail is to be sent. • The <i>from-address</i> argument specifies the e-mail address from which the e-mail is sent. • The <i>subject</i> argument specifies the subject line content of the e-mail as an alphanumeric string. • The <i>body-text</i> argument specifies the text content of the e-mail as an alphanumeric string.
<p>Step 11 Add more action commands as required.</p>	<p>--</p>
<p>Step 12 <code>end</code></p> <p>Example:</p> <pre>Router(config-applet)# end</pre>	<p>Exits applet configuration mode and returns to privileged EXEC mode.</p>

Troubleshooting Tips

Use the **debug event manager** command in privileged EXEC mode to troubleshoot EEM command operations. Use any debugging command with caution as the volume of generated output can slow or stop the router operations. We recommend that this command be used only under the supervision of a Cisco engineer.

Registering and Defining an Embedded Event Manager Policy to Run Manually

There are two ways to manually run an EEM policy. EEM usually schedules and runs policies on the basis of an event specification that is contained within the policy itself. The **event none** command allows EEM to identify an EEM policy that can be manually triggered. To run the policy, use either the **action policy** command in applet configuration mode or the **event manager run** command in privileged EXEC mode.

Perform this task to register an EEM policy to be run manually using the **event manager run** command. For an example of how to manually run a policy using the **action policy** command, see the [Embedded Event Manager Manual Policy Execution Examples, page 74](#).

SUMMARY STEPS

1. **enable**
2. **configure terminal**
3. **event manager applet** *applet-name*
4. **event none**
5. **action label syslog** [**priority** *priority-level*] **msg** *msg-text* **facility** *string*
6. **end**
7. **event manager run** *applet-name*

DETAILED STEPS

Command or Action	Purpose
Step 1 enable Example: Router> enable	Enables privileged EXEC mode. <ul style="list-style-type: none"> • Enter your password if prompted.
Step 2 configure terminal Example: Router# configure terminal	Enters global configuration mode.
Step 3 event manager applet <i>applet-name</i> Example: Router(config)# event manager applet manual-policy	Registers the applet with the Embedded Event Manager and enters applet configuration mode.
Step 4 event none Example: Router(config-applet)# event none	Specifies that an EEM policy is to be registered with the EEM and can be run manually.

Command or Action	Purpose
<p>Step 5 <code>action label syslog [priority priority-level] msg msg-text facility string</code></p> <p>Example:</p> <pre>Router(config-applet)# action 1.0 syslog msg "Manual-policy triggered"</pre> <p>Example:</p>	<p>Specifies the action to be taken when an EEM applet is triggered.</p> <p>In this example, the action to be taken is to write a message to syslog.</p> <ul style="list-style-type: none"> • The optional priority keyword specifies the priority level of the syslog messages. If selected, the <i>priority-level</i> argument must be defined. • The <i>msg-text</i> argument can be character text, an environment variable, or a combination of the two. • The facility keyword specifies the location of generated message. • The <i>string</i> argument can be character text, an environment variable, or a combination of the two.
<p>Step 6 <code>end</code></p> <p>Example:</p> <pre>Router(config-applet)# end</pre>	<p>Exits applet configuration mode and returns to privileged EXEC mode.</p>
<p>Step 7 <code>event manager run applet-name</code></p> <p>Example:</p> <pre>Router# event manager run manual-policy</pre>	<p>Manually runs a registered EEM policy.</p>

Unregistering Embedded Event Manager Policies

Perform this task to remove an EEM policy from the running configuration file. Execution of the policy is canceled.

SUMMARY STEPS

1. `enable`
2. `show event manager policy registered [description [policy-name] | detailed policy-filename [system | user] | [event-type event-name] [system | user] [time-ordered | name-ordered]]`
3. `configure terminal`
4. `no event manager policy policy-filename`
5. `exit`
6. Repeat Step 2 to ensure that the policy has been removed.

DETAILED STEPS

Command or Action	Purpose
<p>Step 1 <code>enable</code></p> <p>Example:</p> <pre>Router> enable</pre>	<p>Enables privileged EXEC mode.</p> <ul style="list-style-type: none"> Enter your password if prompted.
<p>Step 2 <code>show event manager policy registered [description [<i>policy-name</i>] detailed <i>policy-filename</i> [system user] [event-type <i>event-name</i>] [system user] [time-ordered name-ordered]]</code></p> <p>Example:</p> <pre>Router# show event manager policy registered</pre>	<p>(Optional) Displays the EEM policies that are currently registered.</p> <ul style="list-style-type: none"> The optional system and user keywords display the registered system and user policies. If no keywords are specified, EEM registered policies for all event types are displayed in time order.
<p>Step 3 <code>configure terminal</code></p> <p>Example:</p> <pre>Router# configure terminal</pre>	<p>Enters global configuration mode.</p>
<p>Step 4 <code>no event manager policy <i>policy-filename</i></code></p> <p>Example:</p> <pre>Router(config)# no event manager policy IPSLAping1</pre>	<p>Removes the EEM policy from the configuration, causing the policy to be unregistered.</p>
<p>Step 5 <code>exit</code></p> <p>Example:</p> <pre>Router(config)# exit</pre>	<p>Exits global configuration mode and returns to privileged EXEC mode.</p>
<p>Step 6 Repeat Step 2 to ensure that the policy has been removed.</p> <p>Example:</p> <pre>Router# show event manager policy registered</pre>	<p>--</p>

Examples

In the following example, the `show event manager policy registered` privileged EXEC command is used to display the two EEM applets that are currently registered:

```
Router# show event manager policy registered
No.  Class  Type  Event Type  Trap  Time Registered  Name
1    applet system snmp      Off   Fri Aug 12 17:42:52 2005  IPSLAping1
```

```

oid {1.3.6.1.4.1.9.9.42.1.2.9.1.6.4} get-type exact entry-op eq entry-val {1}
exit-op eq exit-val {2} poll-interval 90.000
action 1.0 syslog priority critical msg "Server Ipecho Failed: OID=$_snmp_oid_val"
action 1.1 snmp-trap strdata "EEM detected server reachability failure to 10.1.88.9"
action 1.2 publish-event sub-system 88000101 type 1 arg1 "10.1.88.9" arg2 "IPSLAEcho"
arg3 "fail"
action 1.3 counter name _IPSLA1F op inc value 1
2 applet system snmp Off Thu Sep 15 05:57:16 2005 memory-fail
oid {1.3.6.1.4.1.9.9.48.1.1.1.6.1} get-type exact entry-op lt entry-val {5120000}
poll-interval 90
action 1.0 syslog priority critical msg Memory exhausted; current available memory is
$_snmp_oid_val bytes
action 2.0 force-switchover

```

In the following example, the **show event manager policy registered** privileged EXEC command is used to show that applet IPSLAping1 has been removed after entering the **no event manager policy** command:

```

Router# show event manager policy registered
No. Class Type Event Type Trap Time Registered Name
1 applet system snmp Off Thu Sep 15 05:57:16 2005 memory-fail
oid {1.3.6.1.4.1.9.9.48.1.1.1.6.1} get-type exact entry-op lt entry-val {5120000}
poll-interval 90
action 1.0 syslog priority critical msg Memory exhausted; current available memory is
$_snmp_oid_val bytes
action 2.0 force-switchover

```

Suspending All Embedded Event Manager Policy Execution

Perform this task to immediately suspend the execution of all EEM policies. Suspending policies, instead of unregistering them might be necessary for reasons of temporary performance or security.

SUMMARY STEPS

1. **enable**
2. **show event manager policy registered** [description [*policy-name*] | detailed *policy-filename* [system | user] | [event-type *event-name*] [system | user] [time-ordered | name-ordered]]
3. **configure terminal**
4. **event manager scheduler suspend**
5. **exit**

DETAILED STEPS

Command or Action	Purpose
Step 1 enable Example: Router> enable	Enables privileged EXEC mode. <ul style="list-style-type: none"> • Enter your password if prompted.

Command or Action	Purpose
<p>Step 2 <code>show event manager policy registered</code> [<i>description</i> [<i>policy-name</i>] <i>detailed</i> <i>policy-filename</i> [<i>system</i> <i>user</i>] [<i>event-type</i> <i>event-name</i>] [<i>system</i> <i>user</i>] [<i>time-ordered</i> <i>name-ordered</i>]]</p> <p>Example:</p> <pre>Router# show event manager policy registered</pre>	<p>(Optional) Displays the EEM policies that are currently registered.</p> <ul style="list-style-type: none"> The optional system and user keywords display the registered system and user policies. If no keywords are specified, EEM registered policies for all event types are displayed in time order.
<p>Step 3 <code>configure terminal</code></p> <p>Example:</p> <pre>Router# configure terminal</pre>	<p>Enters global configuration mode.</p>
<p>Step 4 <code>event manager scheduler suspend</code></p> <p>Example:</p> <pre>Router(config)# event manager scheduler suspend</pre>	<p>Immediately suspends the execution of all EEM policies.</p>
<p>Step 5 <code>exit</code></p> <p>Example:</p> <pre>Router(config)# exit</pre>	<p>Exits global configuration mode and returns to privileged EXEC mode.</p>

Configuring and Tracking a Stub Object Using Embedded Event Manager

Perform this task to create a stub object, set the state of the stub object, and configure an EEM applet to be run when the tracked object changes. Actions are specified within the EEM applet to both set and read the state of the object. This task allows EEM to define an enhanced object tracking (EOT) object that may be manipulated by other EOT clients. An EEM policy can be a trigger for any EOT object including objects defined for other EOT clients or for an object defined by EEM.

- [Enhanced Object Tracking, page 24](#)

Enhanced Object Tracking

Object tracking was first introduced into the Hot Standby Router Protocol (HSRP) as a simple tracking mechanism that allowed you to track the interface line-protocol state only. Enhanced object tracking provides complete separation between the objects to be tracked and the action to be taken by a client when a tracked object changes. Thus, several clients such as EEM, VRRP, or GLBP can register their interest with the tracking process, track the same object, and each take different action when the object changes.

Each tracked object is identified by a unique number that is specified on the tracking command-line interface (CLI). Client processes use this number to track a specific object. The tracking process periodically polls the tracked objects and notes any change of value. The changes in the tracked object are

communicated to interested client processes, either immediately or after a specified delay. The object values are reported as either up or down.

The EOT event detector publishes an event when the tracked object changes.

SUMMARY STEPS

1. **enable**
2. **configure terminal**
3. **track *object-number* stub-object**
4. **default-state {up|down}**
5. **exit**
6. **event manager applet *applet-name***
7. **event [*label*] track *object-number*[state{up|down|any}]**
8. **action *label* track set *object-number* state {up|down}**
9. **action *label* track read *object-number***
10. **end**
11. **show track [*object-number*[brief]]**

DETAILED STEPS

	Command or Action	Purpose
Step 1	enable Example: Router> enable	Enables privileged EXEC mode. <ul style="list-style-type: none"> • Enter your password if prompted.
Step 2	configure terminal Example: Router# configure terminal	Enters global configuration mode.
Step 3	track <i>object-number</i> stub-object Example: Router(config)# track 2 stub-object	Creates a stub object to be tracked using EEM and enters tracking configuration mode. <ul style="list-style-type: none"> • Use the <i>object-number</i> argument to assign a number to the tracked object.
Step 4	default-state {up down} Example: Router(config-track)# default-state up	Sets the default state for a stub object. <ul style="list-style-type: none"> • In this example, the default state of the object is set to up.

	Command or Action	Purpose
Step 5	exit Example: <pre>Router(config-track)# exit</pre>	Exits tracking configuration mode and returns to global configuration mode.
Step 6	event manager applet <i>applet-name</i> Example: <pre>Router(config)# event manager applet track-two</pre>	Registers an applet with EEM and enters applet configuration mode.
Step 7	event [<i>label</i>] track <i>object-number</i>[state{up down any}] Example: <pre>Router(config-applet)# event track 2 state down</pre>	Specifies the event criteria that cause the EEM applet to run. <ul style="list-style-type: none"> In this example, an EEM event is triggered when the Cisco IOS Object Tracking subsystem reports that tracked object number 2 transitions from an up state to a down state.
Step 8	action <i>label</i> track set <i>object-number</i> state {up down} Example: <pre>Router(config-applet)# action 1.0 track set 2 state up</pre>	Specifies the action to be taken when an EEM applet is triggered. <ul style="list-style-type: none"> In this example, the action to be taken is to set the state of tracked object number 2 to up.
Step 9	action <i>label</i> track read <i>object-number</i> Example: <pre>Router(config-applet)# action 2.0 track read 2</pre>	Specifies the action to be taken when an EEM applet is triggered. <ul style="list-style-type: none"> In this example, the action to be taken is to read the state of tracked object number 2. The <code>_track_state</code> read-only variable gets set when this command is run.
Step 10	end Example: <pre>Router(config-applet)# end</pre>	Exits applet configuration mode and returns to privileged EXEC mode.

Command or Action	Purpose
Step 11 <code>show track [object-number[brief]]</code>	(Optional) Displays information about objects that are tracked by the tracking process.
Example:	<ul style="list-style-type: none"> • The optional <i>object-number</i> argument displays tracking information for a specified object. • The optional brief keyword displays a single line of information.
Router# <code>show track 2</code>	

Examples

In the following example, the **show track** privileged EXEC command is used to display information about tracked object number 2.

```
Router# show track 2
Track 2
  Stub-object
  State is Up
    1 change, last change 00:00:04, by Undefined
```

Displaying Embedded Event Manager History Data

Perform this optional task to change the size of the history tables and to display EEM history data.

SUMMARY STEPS

1. **enable**
2. **configure terminal**
3. **event manager history size {events | traps} [size]**
4. **exit**
5. **show event manager history events [detailed] [maximum number]**
6. **show event manager history traps {server | policy}**

DETAILED STEPS

Step 1 **enable**
 Enables privileged EXEC mode. Enter your password if prompted.

Example:

```
Router> enable
```

Step 2 **configure terminal**
 Enters global configuration mode.

Example:

```
Router# configure terminal
```

Step 3 **event manager history size {events | traps} [size]**

Use this command to change the size of the EEM event history table or the size of the EEM SNMP trap history table. In the following example, the size of the EEM event history table is changed to 30 entries:

Example:

```
Router(config)# event manager history size events 30
```

Step 4

exit

Exits global configuration mode and returns to privileged EXEC mode.

Example:

```
Router(config)# exit
```

Step 5

show event manager history events [detailed] [maximum number]

Use this command to display detailed information about each EEM event, for example:

Example:

```
Router# show event manager history events
No.  Time of Event          Event Type          Name
1    Fri Aug13 21:42:57 2004 snmp                applet: SAAping1
2    Fri Aug13 22:20:29 2004 snmp                applet: SAAping1
3    Wed Aug18 21:54:48 2004 snmp                applet: SAAping1
4    Wed Aug18 22:06:38 2004 snmp                applet: SAAping1
5    Wed Aug18 22:30:58 2004 snmp                applet: SAAping1
6    Wed Aug18 22:34:58 2004 snmp                applet: SAAping1
7    Wed Aug18 22:51:18 2004 snmp                applet: SAAping1
8    Wed Aug18 22:51:18 2004 application         applet: CustAppl
```

Step 6

show event manager history traps {server | policy}

Use this command to display the EEM SNMP traps that have been sent either from the EEM server or from an EEM policy. In the following example, the EEM SNMP traps that were triggered from within an EEM policy are displayed.

Example:

```
Router# show event manager history traps policy
No.  Time          Trap Type          Name
1    Wed Aug18 22:30:58 2004 policy            EEM Policy Director
2    Wed Aug18 22:34:58 2004 policy            EEM Policy Director
3    Wed Aug18 22:51:18 2004 policy            EEM Policy Director
```

Displaying Embedded Event Manager Registered Policies

Perform this optional task to display registered EEM policies.

SUMMARY STEPS

1. **enable**
2. **show event manager policy registered [event-type event-name] [time-ordered| name-ordered]**

DETAILED STEPS

Step 1

enable

Enables privileged EXEC mode. Enter your password if prompted.

Example:

```
Router> enable
```

Step 2

show event manager policy registered [event-type *event-name*] [time-ordered] name-ordered]

Use this command with the **time-ordered** keyword to display information about currently registered policies sorted by time, for example:

Example:

```
Router# show event manager policy registered time-ordered
No.  Type  Event Type          Time Registered      Registered Name
1    applet snmp              Thu May30 05:57:16 2004 memory-fail
   oid {1.3.6.1.4.1.9.9.48.1.1.1.6.1} get-type exact entry-op lt entry-val
   {5120000} poll-interval 90
   action 1.0 syslog priority critical msg "Memory exhausted; current available memory
   is $_snmp_oid_val bytes"
   action 2.0 force-switchover
2    applet syslog          Wed Jul16 00:05:17 2004 intf-down
   pattern {.*UPDOWN.*Ethernet1/0.*}
   action 1.0 cns-event msg "Interface state change: $_syslog_msg"
```

Use this command with the **name-ordered** keyword to display information about currently registered policies sorted by name, for example:

Example:

```
Router# show event manager policy registered name-ordered
No.  Type  Event Type          Time Registered      Name
1    applet syslog          Wed Jul16 00:05:17 2004 intf-down
   pattern {.*UPDOWN.*Ethernet1/0.*}
   action 1.0 cns-event msg "Interface state change: $_syslog_msg"
2    applet snmp              Thu May30 05:57:16 2004 memory-fail
   oid {1.3.6.1.4.1.9.9.48.1.1.1.6.1} get-type exact entry-op lt entry-val
   {5120000} poll-interval 90
   action 1.0 syslog priority critical msg "Memory exhausted; current available memory
   is $_snmp_oid_val bytes"
   action 2.0 force-switchover
```

Use this command with the **event-type** keyword to display information about currently registered policies for the event type specified in the *event-name* argument, for example:

Example:

```
Router# show event manager policy registered event-type syslog
No.  Type  Event Type          Time Registered      Name
1    applet syslog          Wed Jul16 00:05:17 2004 intf-down
   pattern {.*UPDOWN.*Ethernet1/0.*}
   action 1.0 cns-event msg "Interface state change: $_syslog_msg"
```

Configuring Event SNMP Notification

Perform this task to configure SNMP notifications.

- You must be running Cisco IOS Release 12.4(20)T, 12.2(33)SXI or later release.
- SNMP event manager must be configured using the **snmp-server manager** command.

SUMMARY STEPS

- enable
- configure terminal
- event manager applet *applet-name*
- event [**tag** *event-tag*] **snmp-notification oid** *oid-string* **oid-val** *comparison-value* **op** *operator* [**maxrun** *maxruntime-number*] [**src-ip-address** *ip-address*] [**dest-ip-address** *ip-address*] [**default** *seconds*] [**direction** {**incoming** | **outgoing**}] [**msg-op** {**drop** | **send**}]
- end

DETAILED STEPS

Command or Action	Purpose
<p>Step 1 enable</p> <p>Example:</p> <pre>Router> enable</pre>	<p>Enables privileged EXEC mode.</p> <ul style="list-style-type: none"> Enter your password if prompted.
<p>Step 2 configure terminal</p> <p>Example:</p> <pre>Router# configure terminal</pre>	<p>Enters global configuration mode.</p>
<p>Step 3 event manager applet <i>applet-name</i></p> <p>Example:</p> <pre>Router(config)# event manager applet snmp</pre>	<p>Registers the applet with the event manager server and enters applet configuration mode.</p>
<p>Step 4 event [tag <i>event-tag</i>] snmp-notification oid <i>oid-string</i> oid-val <i>comparison-value</i> op <i>operator</i> [maxrun <i>maxruntime-number</i>] [src-ip-address <i>ip-address</i>] [dest-ip-address <i>ip-address</i>] [default <i>seconds</i>] [direction {incoming outgoing}] [msg-op {drop send}]</p> <p>Example:</p> <pre>Router(config-applet)# event snmp-notification dest-ip-address 192.168.1.1 oid 1 op eq oid-val 10</pre>	<p>Specifies the event criteria for an Embedded Event Manager (EEM) applet that is run by sampling Simple Network Management Protocol (SNMP) notification.</p>

Command or Action	Purpose
Step 5 <code>end</code> Example: <code>Router(config-applet)# end</code>	Exits applet configuration mode and returns to privileged EXEC mode.

Configuring Multiple Event Support

The multiple event support feature introduced in Cisco IOS Release 12.4(20)T and later releases, adds the ability to register multiple events in the EEM server. The multiple event support involves one or more event occurrences, one or more tracked object states, and a time period for the event to occur. The event parameters are specified in the CLI commands. The data structure to handle multiple events contains multiple event identifiers and correlation logic. This data is used to register multiple events in the EEM Server.

- [Setting the Event Configuration Parameters, page 31](#)

Setting the Event Configuration Parameters

The **trigger** command enters the trigger applet configuration mode and specifies the multiple event configuration statements for EEM applets. The trigger statement is used to relate multiple event statement using the *tag* argument specified in each event statement. The events are raised based on the specified parameters.

SUMMARY STEPS

1. **enable**
2. **configure terminal**
3. **event manager applet** *applet-name*
4. **event** [*tag event-tag*] **cli pattern** *regular-expression* **sync** {**yes** | **no skip** {**yes** | **no**}} [**occurs** *num-occurrences*] [**period** *period-value*] [**maxrun** *maxruntime-number*]
5. **trigger** [**occurs** *occurs-value*] [**period** *period-value*] [**period-start** *period-start-value*] [**delay** *delay-value*]
6. **correlate** {**event** *event-tag* | **track** *object-number*} [*boolean-operator* {**event** *event-tag* | **track** *tracked-object*} ...]
7. **attribute tag** *event-tag* [**occurs** *occurs-value*]
8. **action** *label cli command cli-string*

DETAILED STEPS

Command or Action	Purpose
<p>Step 1 <code>enable</code></p> <p>Example:</p> <pre>Router> enable</pre>	<p>Enables privileged EXEC mode.</p> <ul style="list-style-type: none"> • Enter your password if prompted.
<p>Step 2 <code>configure terminal</code></p> <p>Example:</p> <pre>Router# configure terminal</pre>	<p>Enters global configuration mode.</p>
<p>Step 3 <code>event manager applet <i>applet-name</i></code></p> <p>Example:</p> <pre>Router(config)# event manager applet EventInterface</pre>	<p>Registers an applet with EEM and enters applet configuration mode.</p>
<p>Step 4 <code>event [tag <i>event-tag</i>] cli pattern <i>regular-expression</i> sync {yes no skip {yes no}} [occurs <i>num-occurrences</i>] [period <i>period-value</i>] [maxrun <i>maxruntime-number</i>]</code></p> <p>Example:</p> <pre>Router(config-applet)# event tag 1.0 cli pattern "show bgp all" sync yes occurs 32 period 60 maxrun 60</pre>	<p>Specifies the event criteria for an EEM applet that is run by matching a Cisco IOS command-line interface (CLI) command.</p>
<p>Step 5 <code>trigger [occurs <i>occurs-value</i>] [period <i>period-value</i>] [period-start <i>period-start-value</i>] [delay <i>delay-value</i>]</code></p> <p>Example:</p> <pre>Router(config-applet)# trigger occurs 1 period-start "0 8 * 1-5" period 60</pre>	<p>Specifies the complex event configuration parameters for an EEM applet.</p>
<p>Step 6 <code>correlate {event <i>event-tag</i> track <i>object-number</i>} [<i>boolean-operator</i> {event <i>event-tag</i> track <i>tracked-object</i>} ...]</code></p> <p>Example:</p> <pre>Router(config-applet)# correlate event 1.0 or event 2.0 and track 10</pre>	<p>Specifies a complex event correlation in the trigger mode for an EEM applet.</p>

Command or Action	Purpose
<p>Step 7 <code>attribute tag <i>event-tag</i> [<i>occurs occurs-value</i>]</code></p> <p>Example:</p> <pre>Router(config-applet)# attribute tag 1.0 occurs 1</pre>	<p>Specifies up to eight attribute statements to build a complex event for an EEM applet.</p>
<p>Step 8 <code>action <i>label</i> cli command <i>cli-string</i></code></p> <p>Example:</p> <pre>Router(config-applet)# action 1.0 cli command "show mwmory"</pre>	<p>Specifies the action of executing a CLI command when an EEM applet is triggered.</p>

Examples

In the following example, applet is run if the **show bgp all** CLI command and any syslog message that contains the string "COUNT" occurred within a period 60 seconds.

```
event manager applet delay_50
 event tag 1.0 cli pattern "show bgp all" sync yes occurs 32 period 60 maxrun 60
 event tag 2.0 syslog pattern "COUNT"
 trigger occurs 1 delay 50
 correlate event 1.0 or event 2.0
 attribute tag 1.0 occurs 1
 attribute tag 2.0 occurs 1
 action 1.0 cli command "show memory"
 action 2.0 cli command "enable"
 action 3.0 cli command "config terminal"
 action 4.0 cli command " ip route 192.0.2.0 255.255.255.224 192.0.2.12"
 action 91.0 cli command "exit"
 action 99.0 cli command "show ip route | incl 192.0.2.5"
```

Configuring EEM Class-Based Scheduling

To schedule Embedded Event Manager (EEM) policies and set policy scheduling options, perform this task. In this task, two EEM execution threads are created to run applets assigned to the default class.

The EEM policies will be assigned a class using the **class** keyword when they are registered. EEM policies registered without a class will be assigned to the default class. Threads that have default class, will service the default class when the thread is available for work. Threads that are assigned specific class letters will service any policy with a matching class letter when the thread is available for work.

If there is no EEM execution thread available to run the policy in the specified class and a scheduler rule for the class is configured, the policy will wait until a thread of that class is available for execution. Synchronous policies that are triggered from the same input event should be scheduled in the same execution thread.

To use this feature, you must be running Cisco IOS Release 12.4(22)T or a later release.

SUMMARY STEPS

1. **enable**
2. **configure terminal**
3. **event manager scheduler {applet | axp | call-home} thread class *class-options* number *thread-number***
4. **exit**

DETAILED STEPS

	Command or Action	Purpose
Step 1	enable Example: Router> enable	Enables privileged EXEC mode. <ul style="list-style-type: none"> • Enter your password if prompted.
Step 2	configure terminal Example: Router# configure terminal	Enters global configuration mode.
Step 3	event manager scheduler {applet axp call-home} thread class <i>class-options</i> number <i>thread-number</i> Example: Router(config)# event manager scheduler applet thread class default number 2	Schedules EEM policies and sets policy scheduling options. <ul style="list-style-type: none"> • In this example, two EEM execution threads are created to run applets assigned to the default class.
Step 4	exit Example: Router(config)# exit	Exits global configuration mode and returns to privileged EXEC mode.

- [Holding a Scheduled EEM Policy Event or Event Queue, page 34](#)
- [Resuming Execution of EEM Policy Events or Event Queues, page 36](#)
- [Clearing Pending EEM Policy Events or Event Queues, page 37](#)
- [Modifying the Scheduling Parameters of EEM Policy Events or Event Queues, page 38](#)
- [Verifying Class-Based Scheduled Activities of EEM Policies, page 40](#)
- [Verifying Class-Based Active EEM Policies, page 41](#)
- [Verifying Pending EEM Policies, page 42](#)

Holding a Scheduled EEM Policy Event or Event Queue

To hold a scheduled EEM policy event or event queue in the EEM scheduler, perform this task. In this task, all pending EEM policies are displayed. A policy identified using a job ID of 2 is held in the EEM scheduler, and the final step shows that the policy with a job ID of 2 has changed status from pending to held.

To use this feature, you must be running Cisco IOS Release 12.4(22)T or a later release.

SUMMARY STEPS

1. **enable**
2. **show event manager policy pending** [queue-type{applet | call-home | axp | script} class class-options | detailed]
3. **event manager scheduler hold** {all| policy job-id | queue-type {applet | call-home | axp | script} class class-options} [processor {rp_primary| rp_standby}]
4. **show event manager policy pending** [queue-type{applet | call-home | axp | script} class class-options | detailed]

DETAILED STEPS

Command or Action	Purpose
<p>Step 1 enable</p> <p>Example:</p> <pre>Router> enable</pre>	<p>Enables privileged EXEC mode.</p> <ul style="list-style-type: none"> • Enter your password if prompted.
<p>Step 2 show event manager policy pending [queue-type{applet call-home axp script} class class-options detailed]</p> <p>Example:</p> <pre>Router# show event manager policy pending</pre>	<p>Displays the pending EEM policies.</p>
<p>Step 3 event manager scheduler hold {all policy job-id queue-type {applet call-home axp script} class class-options} [processor {rp_primary rp_standby}]</p> <p>Example:</p> <pre>Router# event manager scheduler hold policy 2</pre>	<p>Holds a scheduled EEM policy event or event queue in the EEM scheduler.</p> <ul style="list-style-type: none"> • In this example, a policy with a job ID of 2 is put on hold.
<p>Step 4 show event manager policy pending [queue-type{applet call-home axp script} class class-options detailed]</p> <p>Example:</p> <pre>Router# show event manager policy pending</pre>	<p>Displays the status of EEM policy put on hold in Holding a Scheduled EEM Policy Event or Event Queue, page 34 as held, along with other pending policies.</p>

Examples

The following example shows how to view all pending EEM policies and to hold the EEM policy with a job ID of 2.

```
Router# show event manager policy pending
no. job id status time of event          event type      name
1   1      pend  Thu Sep 7 02:54:04 2006  syslog         applet: one
2   2      pend  Thu Sep 7 02:54:04 2006  syslog         applet: two
3   3      pend  Thu Sep 7 02:54:04 2006  syslog         applet: three
Router# event manager scheduler hold policy 2
Router# show event manager policy pending

no. job id status time of event          event type      name
1   1      pend  Thu Sep 7 02:54:04 2006  syslog         applet: one
2   2      held  Thu Sep 7 02:54:04 2006  syslog         applet: two
3   3      pend  Thu Sep 7 02:54:04 2006  syslog         applet: three
```

Resuming Execution of EEM Policy Events or Event Queues

To resume the execution of specified EEM policies, perform this task. In this task, the policy that was put on hold in the [Holding a Scheduled EEM Policy Event or Event Queue](#), page 34 is now allowed to resume execution.

To use this feature, you must be running Cisco IOS Release 12.4(22)T or a later release.

SUMMARY STEPS

1. enable
2. show event manager policy pending
3. event manager scheduler release {all | policy *policy-id* | queue-type {applet | call-home | axp | script}} class *class-options* [processor {rp_primary | rp_standby}]
4. show event manager policy pending

DETAILED STEPS

	Command or Action	Purpose
Step 1	enable Example: Router> enable	Enables privileged EXEC mode. <ul style="list-style-type: none"> • Enter your password if prompted.
Step 2	show event manager policy pending Example: Router# show event manager policy pending	Displays the pending and held EEM policies. Note Only the syntax applicable to this task is used in this example. For more details, see the Cisco IOS Network Management Command Reference.

Command or Action	Purpose
<p>Step 3 <code>event manager scheduler release {all policy <i>policy-id</i> queue-type {applet call-home axp script}}</code> <code>class <i>class-options</i> [processor {<i>rp_primary</i> <i>rp_standby</i>}]</code></p> <p>Example:</p> <pre>Router# event manager scheduler release policy 2</pre>	<p>Resumes execution of specified EEM policies.</p> <ul style="list-style-type: none"> The example shows how to resume the execution of the policy with job ID of 2.
<p>Step 4 <code>show event manager policy pending</code></p> <p>Example:</p> <pre>Router# show event manager policy pending</pre>	<p>Displays the status of the EEM policy resumed in Resuming Execution of EEM Policy Events or Event Queues, page 36 as pending, along with other pending policies.</p> <p>Note Only the syntax applicable to this task is used in this example. For more details, see the Cisco IOS Network Management Command Reference.</p>

Examples

The following example shows how to view all pending EEM policies, to specify the policy that will resume execution, and to see that the policy is now back in a pending status.

```
Router# show event manager policy pending

no. job id status time of event          event type   name
1 1 pend Thu Sep 7 02:54:04 2006 syslog applet: one
2 2 held Thu Sep 7 02:54:04 2006 syslog applet: two
3 3 pend Thu Sep 7 02:54:04 2006 syslog applet: three
Rotuer# event manager scheduler release policy 2
Rotuer# show event manager policy pending

no. job id status time of event          event type   name
1 1 pend Thu Sep 7 02:54:04 2006 syslog applet: one
2 2 pend Thu Sep 7 02:54:04 2006 syslog applet: two
3 3 pend Thu Sep 7 02:54:04 2006 syslog applet: three
```

Clearing Pending EEM Policy Events or Event Queues

Perform this task to clear EEM policies that are executing or pending execution. In this task, the EEM policy with a job ID of 2 is cleared from the pending queue. The `show event manager policy pending` command is used to display the policies that are pending before and after the policy is cleared.

To use this feature, you must be running Cisco IOS Release 12.4(22)T or a later release.

SUMMARY STEPS

- enable
- show event manager policy pending
- event manager scheduler clear {all | policy *job-id* | queue-type {applet | call-home | axp | script} class *class-options*} [processor {*rp_primary* | *rp_standby*}]
- show event manager policy pending

DETAILED STEPS

Command or Action	Purpose
<p>Step 1 <code>enable</code></p> <p>Example:</p> <pre>Router> enable</pre>	<p>Enables privileged EXEC mode.</p> <ul style="list-style-type: none"> Enter your password if prompted.
<p>Step 2 <code>show event manager policy pending</code></p> <p>Example:</p> <pre>Router# show event manager policy pending</pre>	<p>Displays the pending EEM policies.</p> <p>Note Only the syntax applicable to this task is used in this example. For more details, see the Cisco IOS Network Management Command Reference.</p>
<p>Step 3 <code>event manager scheduler clear {all policy job-id queue-type {applet call-home axp script} class class-options} [processor {rp_primary rp_standby}]</code></p> <p>Example:</p> <pre>Router# event manager scheduler clear policy 2</pre>	<p>Clears EEM policies that are executing or pending execution.</p> <ul style="list-style-type: none"> In this example, the EEM policy with a job ID of 2 is cleared from the pending queue.
<p>Step 4 <code>show event manager policy pending</code></p> <p>Example:</p> <pre>Router# show event manager policy pending</pre>	<p>Displays all the pending EEM policies except the policy cleared in Clearing Pending EEM Policy Events or Event Queues, page 37.</p> <p>Note Only the syntax applicable to this task is used in this example. For more details, see the Cisco IOS Network Management Command Reference.</p>

Examples

The following example shows how to clear the EEM policy with a job ID of 2 that was pending execution. The **show** commands are used to display the policies that are pending before and after the policy is cleared.

```
Router# show event manager policy pending
no. job id status time of event      event type      name
1 1      pend  Thu Sep 7 02:54:04 2006  syslog         applet: one
2 2      pend  Thu Sep 7 02:54:04 2006  syslog         applet: two
3 3      pend  Thu Sep 7 02:54:04 2006  syslog         applet: three

Router# event manager scheduler clear policy 2
Router# show event manager policy pending

no. job id status time of event      event type      name
1 1      pend  Thu Sep 7 02:54:04 2006  syslog         applet: one
3 3      pend  Thu Sep 7 02:54:04 2006  syslog         applet: three
```

Modifying the Scheduling Parameters of EEM Policy Events or Event Queues

To modify the scheduling parameters of the EEM policies, perform this task. The **show event manager policy pending** command displays policies that are assigned to the B or default class. All the currently

pending policies are then changed to class A. After the configuration modification, the **show event manager policy pending** command shows all policies assigned as class A.

To use this feature, you must be running Cisco IOS Release 12.4(22)T or a later release.

SUMMARY STEPS

1. **enable**
2. **show event manager policy pending**
3. **event manager scheduler modify** {all | policy *job-id* | queue-type {applet | call-home | axp | script} | class *class-options*} [queue-priority {high | last | low | normal}][processor {rp_primary | rp_standby}]
4. **show event manager policy pending**

DETAILED STEPS

Command or Action	Purpose
<p>Step 1 enable</p> <p>Example:</p> <pre>Router> enable</pre>	<p>Enables privileged EXEC mode.</p> <ul style="list-style-type: none"> • Enter your password if prompted.
<p>Step 2 show event manager policy pending</p> <p>Example:</p> <pre>Router# show event manager policy pending</pre>	<p>Displays the pending EEM policies.</p> <p>Note Only the syntax applicable to this task is used in this example. For more details, see the Cisco IOS Network Management Command Reference.</p>
<p>Step 3 event manager scheduler modify {all policy <i>job-id</i> queue-type {applet call-home axp script} class <i>class-options</i>} [queue-priority {high last low normal}][processor {rp_primary rp_standby}]</p> <p>Example:</p> <pre>Router# event manager scheduler modify all class A</pre>	<p>Modifies the scheduling parameters of the EEM policies.</p> <ul style="list-style-type: none"> • In this example, all currently pending EEM policies are assigned to class A.
<p>Step 4 show event manager policy pending</p> <p>Example:</p> <pre>Router# show event manager policy pending</pre>	<p>Displays the EEM policies modified in Modifying the Scheduling Parameters of EEM Policy Events or Event Queues, page 38 along with other pending policies.</p> <p>Note Only the syntax applicable to this task is used in this example. For more details, see the Cisco IOS Network Management Command Reference.</p>

Examples

The following example shows how to modify the scheduling parameters of the EEM policies. In this example, the **show event manager policy pending** command displays policies that are assigned to the B or

default class. All the currently pending policies are then changed to class A. After the configuration modification, the **show event manager policy pending** command verifies that all policies are now assigned as class A.

```
Router# show event manager policy pending
no. class status time of event event type name
1 default pend Thu Sep 7 02:54:04 2006 syslog applet: one
2 default pend Thu Sep 7 02:54:04 2006 syslog applet: two
3 B pend Thu Sep 7 02:54:04 2006 syslog applet: three

Router# event manager scheduler modify all class A
Router# show event manager policy pending

no. class status time of event event type name
1 A pend Thu Sep 7 02:54:04 2006 syslog applet: one
2 A pend Thu Sep 7 02:54:04 2006 syslog applet: two
3 A pend Thu Sep 7 02:54:04 2006 syslog applet: three
```

Verifying Class-Based Scheduled Activities of EEM Policies

To verify the scheduled activities of the EEM policies, use the **show event manager scheduler** command.

- [Prerequisites, page 40](#)

Prerequisites

To use this feature, you must be running Cisco IOS Release 12.4(22)T or a later release.

SUMMARY STEPS

1. **show event manager scheduler thread** [**queue-type** {**applet**|**call-home** | **axp** | **script**} **class** *class-options* | **detailed**]

DETAILED STEPS

show event manager scheduler thread [**queue-type** {**applet**|**call-home** | **axp** | **script**} **class** *class-options* | **detailed**]

This command displays all the EEM execution threads from the scheduler perspective and the details of the running policies. This command includes **detailed** and **queue-type** optional keywords. The following is sample output from this command:

Example:

```
Router# show event manager scheduler thread
1 Script threads service class default
total: 1 running: 1 idle: 0
2 Script threads service class range A-D
total: 3 running: 0 idle: 3
3 Applet threads service class default
total: 32 running: 0 idle: 32
4 Applet threads service class W X
total: 5 running: 0 idle: 5
```

To display the details of the running policies using the scheduler threads use the **detailed** keyword. The following is sample output for this keyword:

Example:

```
Router# show event manager scheduler thread detailed

1 Script threads service class default
total: 5 running: 5 idle: 0
1 job id: 12341, pid: 101, name: loop.tcl
2 job id: 12352, pid: 52, name: loop.tcl
3 job id: 12363, pid: 55, name: loop.tcl
4 job id: 12395, pid: 53, name: loop.tcl
5 job id: 12588, pid: 102, name: loop.tcl
2 Applet threads service class default
total: 32 running: 5 idle: 27
1 job id: 15585, pid: 104, name: WDOG_SYSLG_CNTR_TRACK_INTF_APPL
2 job id: 15586, pid: 105, name: WDOG_SYSLG_CNTR_TRACK_INTF_APPL
3 job id: 15587, pid: 106, name: WDOG_SYSLG_CNTR_TRACK_INTF_APPL
4 job id: 15589, pid: 107, name: WDOG_SYSLG_CNTR_TRACK_INTF_APPL
5 job id: 15590, pid: 80, name: WDOG_SYSLG_CNTR_TRACK_INTF_APPL
```

To display the scheduler threads of a queue-type use the **queue-type** keyword. The following are the sample output for this keyword:

Example:

```
Router# show event manager sched thread queue-type applet
1 Applet threads service class default
total: 32 running: 7 idle: 25
Router# show event manager sched thread queue-type applet detailed
1 Applet threads service class default
total: 32 running: 5 idle: 27
1 job id: 15700, pid: 103, name: WDOG_SYSLG_CNTR_TRACK_INTF_APPL
2 job id: 15701, pid: 104, name: WDOG_SYSLG_CNTR_TRACK_INTF_APPL
3 job id: 15703, pid: 106, name: WDOG_SYSLG_CNTR_TRACK_INTF_APPL
4 job id: 15704, pid: 107, name: WDOG_SYSLG_CNTR_TRACK_INTF_APPL
5 job id: 15706, pid: 55, name: WDOG_SYSLG_CNTR_TRACK_INTF_APPL
```

Verifying Class-Based Active EEM Policies

To verify the active or the running EEM policies, use the **show event manager policy active** command.

- [Prerequisites, page 41](#)

Prerequisites

To use this feature, you must be running Cisco IOS Release 12.4(22)T or a later release.

SUMMARY STEPS

1. **show event manager policy active** [**queue-type** {**applet** | **call-home** | **axp** | **script**} **class** *class-options* | **detailed**]

DETAILED STEPS

show event manager policy active [**queue-type** {**applet** | **call-home** | **axp** | **script**} **class** *class-options* | **detailed**]

This command displays only the running EEM policies. This command includes **class**, **detailed** and **queue-type** optional keywords. The following is sample output from this command:

Example:

```

Router# show event manager policy active
no. job id p s status time of event event type name
1 12598 N A running Mon Oct29 20:49:37 2007 timer watchdog loop.tcl
2 12609 N A running Mon Oct29 20:49:42 2007 timer watchdog loop.tcl
3 12620 N A running Mon Oct29 20:49:46 2007 timer watchdog loop.tcl
4 12650 N A running Mon Oct29 20:49:59 2007 timer watchdog loop.tcl
5 12842 N A running Mon Oct29 20:51:13 2007 timer watchdog loop.tcl
default class - 6 applet events
no. job id p s status time of event event type name
1 15852 N A running Mon Oct29 21:11:09 2007 counter WDOG_SYSLG_CNTR_TRACK_INTF_APPL
2 15853 N A running Mon Oct29 21:11:09 2007 counter WDOG_SYSLG_CNTR_TRACK_INTF_APPL
3 15854 N A running Mon Oct29 21:11:10 2007 counter WDOG_SYSLG_CNTR_TRACK_INTF_APPL
4 15855 N A running Mon Oct29 21:11:10 2007 timer watchdog WDOG_SYSLG_CNTR_TRACK_INTF_APPL
5 15856 N A running Mon Oct29 21:11:11 2007 counter WDOG_SYSLG_CNTR_TRACK_INTF_APPL
6 15858 N A running Mon Oct29 21:11:11 2007 counter WDOG_SYSLG_CNTR_TRACK_INTF_APPL

```

Verifying Pending EEM Policies

To verify the EEM policies that are pending for execution, use the **show event manager policy pending** command. In Cisco IOS Release 12.4(22)T, optional keywords were added to this command to specify EEM class-based scheduling options.

- [Prerequisites, page 42](#)

Prerequisites

To use this feature, you must be running Cisco IOS Release 12.4(22)T or later release.

SUMMARY STEPS

1. **show event manager policy pending [queue-type {applet|call-home|axp|script} class class-options | detailed]**

DETAILED STEPS

show event manager policy pending [queue-type {applet|call-home|axp|script} class class-options | detailed]

This command displays only the pending policies. This command includes **class**, **detailed** and **queue-type** optional keywords. The following is sample output from this command:

Example:

```

Router# show event manager policy pending
no. job id p s status time of event event type name
1 12851 N A pend Mon Oct29 20:51:18 2007 timer watchdog loop.tcl
2 12868 N A pend Mon Oct29 20:51:24 2007 timer watchdog loop.tcl
3 12873 N A pend Mon Oct29 20:51:27 2007 timer watchdog loop.tcl
4 12907 N A pend Mon Oct29 20:51:41 2007 timer watchdog loop.tcl
5 13100 N A pend Mon Oct29 20:52:55 2007 timer watchdog loop.tcl

```

Configuring EEM Applet (Interactive CLI) Support

The synchronous applets are enhanced to support interaction with the local console (tty) in Cisco IOS Release 12.4(22)T. Two new commands **action gets** and **action puts** are introduced to allow users to enter and display input directly on the console. The output for synchronous applets will bypass the system logger. The local console will be opened by the applets and serviced by the corresponding synchronous Event Detector pty. Synchronous output will be directed to the opened console.

For details on configuring EEM applet interactive CLI support, see the [Reading and Writing Input from the Active Console for Synchronous EEM Applets, page 43](#).

- [Reading and Writing Input from the Active Console for Synchronous EEM Applets, page 43](#)

Reading and Writing Input from the Active Console for Synchronous EEM Applets

The synchronous applets are enhanced to support interaction with the local console (tty) in Cisco IOS Release 12.4(22)T.

Use the following tasks to implement EEM applet interactive CLI support:

- [Reading Input from the Active Console, page 43](#)
- [Writing Input to the Active Console, page 45](#)

Reading Input from the Active Console

When a synchronous policy is triggered, the related console is stored in the publish information specification. The policy director will query this information in an event_reqinfo call, and store the given console information for use by the **action gets** command.

The **action gets** command reads a line of the input from the active console and stores the input in the variable. The trailing new line will not be returned.

To use this feature, you must be running Cisco IOS Release 12.4(22)T, or later releases.

SUMMARY STEPS

1. **enable**
2. **configure terminal**
3. **event manager applet** *applet-name*
4. **event none**
5. **action** *label* **gets** *variable*
6. **action** *label* **syslog** [**priority** *priority-level*] **msg** *msg-text*
7. **exit**

DETAILED STEPS

Command or Action	Purpose
<p>Step 1 <code>enable</code></p> <p>Example:</p> <pre>Router> enable</pre>	<p>Enables privileged EXEC mode.</p> <ul style="list-style-type: none"> Enter your password if prompted.
<p>Step 2 <code>configure terminal</code></p> <p>Example:</p> <pre>Router# configure terminal</pre>	<p>Enters global configuration mode.</p>
<p>Step 3 <code>event manager applet <i>applet-name</i></code></p> <p>Example:</p> <pre>Router(config)# event manager applet action</pre>	<p>Registers the applet with the EEM and enters applet configuration mode.</p>
<p>Step 4 <code>event none</code></p> <p>Example:</p> <pre>Router(config-applet)# event none</pre>	<p>Specifies that an EEM policy is to be registered with the EEM and can be run manually.</p>
<p>Step 5 <code>action <i>label</i> gets <i>variable</i></code></p> <p>Example:</p> <pre>Router(config-applet)# action label2 gets input</pre>	<p>Gets input from the local console in a synchronous applet and stores the value in the given variable when an EEM applet is triggered.</p>
<p>Step 6 <code>action <i>label</i> syslog [<i>priority</i> <i>priority-level</i> <i>msg</i> <i>msg-text</i></code></p> <p>Example:</p> <pre>Router(config-applet)# action label3 syslog msg "Input entered was \"\$input\""</pre>	<p>Specifies the action to be taken when an EEM applet is triggered.</p> <ul style="list-style-type: none"> In this example, the action to be taken is to write the value of the variable specified in Reading Input from the Active Console, page 43, to syslog.
<p>Step 7 <code>exit</code></p> <p>Example:</p> <pre>Router(config-applet)# exit</pre>	<p>Exits applet configuration mode and returns to privileged EXEC mode.</p>

Example

The following example shows how to get the input from the local tty in a synchronous applet and store the value

```
Router(config)# event manager applet action
Router(config-applet)# event none
Router(config-applet)# action label2 gets input

Router(config-applet)# action label3 syslog msg "Input entered was \"$input\""
```

Writing Input to the Active Console

When a synchronous policy is triggered, the related console is stored in the publish information specification. The policy director will query this information in an event_reqinfo call, and store the given console information for use by the **action puts** command.

The **action puts** command will write the string to the active console. A new line will be displayed unless the **newline** keyword is specified. The output from the **action puts** command for a synchronous applet is displayed directly to the console, bypassing the system logger. The output of the **action puts** command for an asynchronous applet is directed to the system logger.

To use this feature, you must be running Cisco IOS Release 12.4(22)T, or a later release.

SUMMARY STEPS

1. **enable**
2. **configure terminal**
3. **event manager applet** *applet-name*
4. **event none**
5. **action label regexp** *string-pattern string-input* [*string-match* [*string-submatch1*] [*string-submatch2*] [*string-submatch3*]]
6. **action label puts** [**newline**] *string*
7. **exit**
8. **event manager run** *applet-name*

DETAILED STEPS

	Command or Action	Purpose
Step 1	enable Example: Router> enable	Enables privileged EXEC mode. • Enter your password if prompted.
Step 2	configure terminal Example: Router# configure terminal	Enters global configuration mode.

Command or Action	Purpose
<p>Step 3 <code>event manager applet <i>applet-name</i></code></p> <p>Example:</p> <pre>Router(config)# event manager applet action</pre>	Registers the applet with the EEM and enters applet configuration mode.
<p>Step 4 <code>event none</code></p> <p>Example:</p> <pre>Router(config-applet)# event none</pre>	Specifies that an EEM policy is to be registered with the EEM and can be run manually.
<p>Step 5 <code>action <i>label</i> regexp <i>string-pattern</i> <i>string-input</i> [<i>string-match</i> [<i>string-submatch1</i>] [<i>string-submatch2</i>] [<i>string-submatch3</i>]]</code></p> <p>Example:</p> <pre>Router(config-applet)# action 1 regexp "(.*) (.*) (.*)" "one two three" _match _sub1</pre>	Specifies the action to match the regular expression pattern on an input string when an EEM applet is triggered.
<p>Step 6 <code>action <i>label</i> puts [<i>nonewline</i>] <i>string</i></code></p> <p>Example:</p> <pre>Router(config-applet)# action 2 puts "match is \$_match"</pre>	<p>Specifies the action of printing data directly to the local console when an EEM applet is triggered.</p> <ul style="list-style-type: none"> The nonewline keyword is optional and is used to suppress the display of the new line character.
<p>Step 7 <code>exit</code></p> <p>Example:</p> <pre>Router(config-applet)# exit</pre>	Exits applet configuration mode and returns to privileged EXEC mode.
<p>Step 8 <code>event manager run <i>applet-name</i></code></p> <p>Example:</p> <pre>Router# event manager run action</pre>	<p>Manually runs a registered EEM policy.</p> <ul style="list-style-type: none"> In this example, the policy registered in Writing Input to the Active Console, page 45 is triggered and the associated actions specified in Writing Input to the Active Console, page 45 and Writing Input to the Active Console, page 45 are executed.

Example

The following example shows how the **action puts** command prints data directly to the local console:

```
Router(config-applet)# event manager applet puts
Router(config-applet)# event none
```

```

Router(config-applet)# action 1 regexp "(.*) (.*) (.*)" "one two three" _match _sub1
Router(config-applet)# action 2 puts "match is $_match"
Router(config-applet)# action 3 puts "submatch 1 is $_sub1"
Router# event manager run puts
match is one two three
submatch 1 is one

```

Configuring SNMP Library Extensions

- [Prerequisites, page 47](#)
- [SNMP Get and Set Operations, page 47](#)
- [SNMP Traps and Inform Requests, page 49](#)
- [How to Configure SNMP Library Extensions, page 49](#)
- [Configuring EEM Applet for SNMP OID Notifications, page 52](#)

Prerequisites

To use this feature, you must be running Cisco IOS Release 12.4(22)T or a later release.

SNMP Get and Set Operations

With the Cisco IOS Release 12.4(22)T, the SNMP Library Extensions feature extends the EEM applet **action info** and Tcl **sys_reqinfo_snmp** commands to include functionality for SNMP get-one, get-next, getid and set-any operations.

- [SNMP Get Operation, page 47](#)
- [GetID Operation, page 48](#)
- [SNMP Set Operation, page 48](#)

SNMP Get Operation

The SNMP event manager performs the SNMP get operation to retrieve one or more variables for the managed objects. Using the **action info type snmp oid get-type** and **action info type snmp getid** commands, you can configure the SNMP event manager to send an SNMP get request by specifying the variables to retrieve, and the IP address of the agent.

For example, if you want to retrieve the variable with the OID value of 1.3.6.1.2.1.1.1, you should specify the variable value, that is 1.3.6.1.2.1.1.1. If the specified values do not match, a trap will be generated and an error message will be written to the syslog history.

The **action info type snmp oid get-type** command specifies the type of the get operation to be performed. To retrieve the exact variable, the get operation type should be specified as **exact**. To retrieve a lexicographical successor of the specified OID value, the get operation type should be set to **next**.

The table below shows the built-in variables, in which the values retrieved from SNMP get operation are stored.

Table 3 Built-in Variables for **action info type snmp oid** Command

Built-in Variable	Description
<code>_info_snmp_oid</code>	The SNMP object ID.

Built-in Variable	Description
<code>_info_snmp_value</code>	The value string of the associated SNMP data element.

GetID Operation

The **action info type snmp getid** command retrieves the following variables from the SNMP entity:

- `sysDescr.0`
- `sysObjectID.0`
- `sysUpTime.0`
- `sysContact.0`
- `sysName.0`
- `sysLocation.0`

The table below shows the built-in variables, in which the values retrieved from the SNMP getID operation are stored.

Table 4 *Built-in Variables for action info type snmp getid Command*

Built-in Variable	Description
<code>_info_snmp_syslocation_oid</code>	The OID value of the <code>sysLocation</code> variable.
<code>_info_snmp_syslocation_value</code>	The value string for the <code>sysLocation</code> variable.
<code>_info_snmp_sysdescr_oid</code>	The OID value of the <code>sysDescr</code> variable.
<code>_info_snmp_sysdescr_value</code>	The value string for the <code>sysDescr</code> variable.
<code>_info_snmp_sysobjectid_oid</code>	The OID value of the <code>sysObjectID</code> variable.
<code>_info_snmp_sysobjectid_value</code>	The value string for the <code>sysObjectID</code> variable.
<code>_info_snmp_sysuptime_oid</code>	The OID value of the <code>sysUptime</code> variable.
<code>_info_snmp_sysuptime_value</code>	The value string for the <code>sysUptime</code> variable.
<code>_info_snmp_syscontact_oid</code>	The OID value of the <code>sysContact</code> variable.
<code>_info_snmp_syscontact_value</code>	The value string for the <code>sysContact</code> variable.

The get operation requests can be sent to both local and remote hosts.

SNMP Set Operation

All SNMP variables are assigned a default value in the MIB view. The SNMP event manager can modify the value of these MIB variables through set operation. The set operation can be performed only on the system that allows read-write access.

To perform a set operation, you must specify the type of the variable and the value associated with it.

The table below shows the valid OID types and values for each OID type.

Table 5 *OID Type and Value for Set Operation*

OID Type	Description
counter32	A 32-bit number with a minimum value of 0. When the maximum value is reached, the counter resets to 0. Integer value in the range from 0 to 4294967295 is valid.
gauge	A 32-bit number with a minimum value of 0. For example, the interface speed on a router is measured using a gauge object type. Integer value in the range from 0 to 4294967295 is valid.
integer	A 32-bit number used to specify a numbered type within the context of a managed object. For example, to set the operational status of a router interface, 1 represents up and 2 represents down. Integer value in the range from 0 to 4294967295 is valid.
ipv4	IP version 4 address. IPv4 address in dotted decimal notation is valid.
octet string	An octet string in hexadecimal notation used to represent physical addresses. Text strings are valid.
string	An octet string in text notation used to represent text strings. Text strings are valid.
unsigned32	A 32-bit number used to represent decimal value. Unsigned integer value in the range from 0 to 4294967295 is valid.

The set operation can be carried out on both local and remote hosts.

SNMP Traps and Inform Requests

Traps are SNMP notifications that alert the SNMP manager or the NMS to a network condition.

SNMP inform requests refer to the SNMP notifications that alert the SNMP manager to a network condition and request for confirmation of receipt from the SNMP manager.

An SNMP event occurs when SNMP MIB object ID values are sampled, or when the SNMP counter crosses a defined threshold. If the notifications are enabled and configured for such events, the SNMP traps or inform messages are generated. An SNMP notification event is triggered when an SNMP trap or inform message is received by the event manager server.

To send an SNMP trap or inform message when an Embedded Event Manager (EEM) applet is triggered, the **action info type snmp trap** and **action info type snmp inform** commands are used. The CISCO-EMBEDDED-EVENT-MGR-MIB.mib is used to define the trap and inform messages.

How to Configure SNMP Library Extensions

- [Configuring EEM Applet for SNMP Get and Set Operations, page 50](#)

Configuring EEM Applet for SNMP Get and Set Operations

While registering a policy with the event manager server, the actions associated with an SNMP event can be configured.

Perform this task to configure EEM applet for SNMP set and get operations.

- You must be running Cisco IOS Release 12.4(22)T or a later release.
- SNMP event manager must be configured using the **snmp-server manager** command.
- The SNMP community string should be set by using the **snmp-server community** command to enable access to the SNMP entity.

SUMMARY STEPS

1. **enable**
2. **configure terminal**
3. **event manager applet** *applet-name*
4. Do one of the following:
 - **event snmp oid** *oid-value* **get-type** {**exact** | **next**} **entry-op** *operator* **entry-val** *entry-value* [**exit-comb** | **and**] [**exit-op** *operator*] [**exit-val** *exit-value*] [**exit-time** *exit-time-value*] **poll-interval** *poll-int-value*
5. **action label info type snmp oid** *oid-value* **get-type** {**exact** | **next**} [**community** *community-string*] [**ipaddr** *ip-address*]
6. **action label info type snmp oid** *oid-value* **set-type** *oid-type* *oid-type-value* **community** *community-string* [**ipaddr** *ip-address*]
7. **action label info type snmp getid** *oid-value* [**community** *community-string*] [**ipaddr** *ip-address*]
8. **exit**

DETAILED STEPS

Command or Action	Purpose
Step 1 enable Example: Router> enable	Enables privileged EXEC mode. <ul style="list-style-type: none"> • Enter your password if prompted.
Step 2 configure terminal Example: Router# configure terminal	Enters global configuration mode.

Command or Action	Purpose
<p>Step 3 <code>event manager applet <i>applet-name</i></code></p> <p>Example:</p> <pre>Router(config)# event manager applet snmp</pre>	<p>Registers the applet with the event manager server and enters applet configuration mode.</p>
<p>Step 4 Do one of the following:</p> <ul style="list-style-type: none"> <code>event snmp oid <i>oid-value</i> get-type {exact next} entry-op <i>operator</i> entry-val <i>entry-value</i> [exit-comb and] [exit-op <i>operator</i>] [exit-val <i>exit-value</i>] [exit-time <i>exit-time-value</i>] poll-interval <i>poll-int-value</i></code> <p>Example:</p> <pre>Router(config-applet)# event snmp oid</pre> <p>Example:</p> <pre>1.3.6.1.4.1.9.9.48.1.1.1.6.1 get-type exact</pre> <p>Example:</p> <pre>entry-op lt entry-val 5120000 poll-interval 90</pre>	<p>Specifies the event criteria that cause the EEM applet to run.</p> <ul style="list-style-type: none"> In this example, an EEM event is triggered when free memory falls below the value of 5120000. Exit criteria are optional, and if not specified, event monitoring is reenabled immediately.
<p>Step 5 <code>action label info type snmp oid <i>oid-value</i> get-type {exact next} [community <i>community-string</i>] [ipaddr <i>ip-address</i>]</code></p> <p>Example:</p> <pre>Router(config-applet)# action 1.3 info type</pre> <p>Example:</p> <pre>snmp oid 1.3.6.1.4.1.9.9.48.1.1.1.6.1 get-type</pre> <p>Example:</p> <pre>exact community public ipaddr 172.17.16.69</pre>	<p>Specifies the type of get operation to perform.</p> <ul style="list-style-type: none"> In this example, the type of get operation is specified as exact and community string is specified as public.

Command or Action	Purpose
<p>Step 6 <code>action label info type snmp oid <i>oid-value</i> set-type <i>oid-type oid-type-value</i> community <i>community-string</i> [ipaddr <i>ip-address</i>]</code></p> <p>Example:</p> <pre>Router(config-applet)# action 1.4 info type</pre> <p>Example:</p> <pre>snmp oid 1.3.6.1.4.1.9.9.48.1.1.1.6.1 set-type</pre> <p>Example:</p> <pre>integer 42220 sysName.0 community rw ipaddr</pre> <p>Example:</p> <pre>172.17.16.69</pre>	<p>(Optional) Specifies the variable to be set.</p> <ul style="list-style-type: none"> In this example, the sysName.0 variable is specified for the set operation and community string is specified as rw. <p>Note For set operation, you must specify the SNMP community string.</p>
<p>Step 7 <code>action label info type snmp getid <i>oid-value</i> [community <i>community-string</i>] [ipaddr <i>ip-address</i>]</code></p> <p>Example:</p> <pre>Router(config-applet)# action 1.3 info type</pre> <p>Example:</p> <pre>snmp getid community public ipaddr 172.17.16.69</pre>	<p>(Optional) Specifies if the individual variables should be retrieved by the getid operation.</p>
<p>Step 8 <code>exit</code></p> <p>Example:</p> <pre>Router(config)# exit</pre>	<p>Exits global configuration mode and returns to privileged EXEC mode.</p>

Configuring EEM Applet for SNMP OID Notifications

Perform this task to configure SNMP notifications.

- You must be running Cisco IOS Release 12.4(22)T or later release.
- SNMP event manager must be configured using the **snmp-server manager** command and SNMP agents must be configured to send and receive SNMP traps generated for an EEM policy.

- SNMP traps and informs must be enabled by using the **snmp-server enable traps event-manager** and **snmp-server enable traps** commands, to allow traps and inform requests to be sent from the Cisco IOS device to the event manager server.

SUMMARY STEPS

1. **enable**
2. **configure terminal**
3. **event manager applet** *applet-name*
4. Do one of the following:
 - **event snmp oid** *oid-value* **get-type** { **exact** | **next** } **entry-op** *operator* **entry-val** *entry-value* [**exit-comb** | **and**] [**exit-op** *operator*] [**exit-val** *exit-value*] [**exit-time** *exit-time-value*] **poll-interval** *poll-int-value*
5. **action label info type snmp var** *variable-name* **oid** *oid-value* *oid-type* *oid-type-value*
6. **action label info type snmp trap enterprise-oid** *enterprise-oid-value* **generic-trapnum** *generic-trap-number* **specific-trapnum** *specific-trap-number* **trap-oid** *trap-oid-value* **trap-var** *trap-variable*
7. **action label info type snmp inform trap-oid** *trap-oid-value* **trap-var** *trap-variable* **community** *community-string* **ipaddr** *ip-address*
8. **exit**

DETAILED STEPS

Command or Action	Purpose
<p>Step 1 enable</p> <p>Example:</p> <pre>Router> enable</pre>	<p>Enables privileged EXEC mode.</p> <ul style="list-style-type: none"> • Enter your password if prompted.
<p>Step 2 configure terminal</p> <p>Example:</p> <pre>Router# configure terminal</pre>	<p>Enters global configuration mode.</p>
<p>Step 3 event manager applet <i>applet-name</i></p> <p>Example:</p> <pre>Router(config)# event manager applet snmp</pre>	<p>Registers the applet with the event manager server and enters applet configuration mode.</p>

Command or Action	Purpose
<p>Step 4 Do one of the following:</p> <ul style="list-style-type: none"> • event snmp oid <i>oid-value</i> get-type { exact next } entry-op operator entry-val <i>entry-value</i> [exit-comb and] [exit-op operator] [exit-val <i>exit-value</i>] [exit-time <i>exit-time-value</i>] poll-interval <i>poll-int-value</i> <p>Example:</p> <pre>Router(config-applet)# event snmp oid</pre> <p>Example:</p> <pre>1.3.6.1.4.1.9.9.48.1.1.1.6.1 get-type exact</pre> <p>Example:</p> <pre>entry-op lt entry-val 5120000 poll-interval 90</pre>	<p>Specifies the event criteria that cause the EEM applet to run.</p> <ul style="list-style-type: none"> • In this example, an EEM event is triggered when free memory falls below the value of 5120000. • Exit criteria are optional, and if not specified, event monitoring is reenabled immediately.
<p>Step 5 action label info type snmp var <i>variable-name</i> oid <i>oid-value</i> <i>oid-type</i> <i>oid-type-value</i></p> <p>Example:</p> <pre>Router(config-applet)# action 1.3 info type</pre> <p>Example:</p> <pre>snmp var sysDescr.0 oid</pre> <p>Example:</p> <pre>1.3.6.1.4.1.9.9.48.1.1.1.6.1 integer 4220</pre>	<p>Specifies the instance of a managed object and its value.</p> <ul style="list-style-type: none"> • In this example, the sysDescr.0 variable is used.

Command or Action	Purpose
<p>Step 6 action label info type snmp trap enterprise-oid <i>enterprise-oid-value</i> generic-trapnum <i>generic-trap-number</i> specific-trapnum <i>specific-trap-number</i> trap-oid <i>trap-oid-value</i> trap-var <i>trap-variable</i></p> <p>Example:</p> <pre>Router(config-applet)# action 1.4 info type</pre> <p>Example:</p> <pre>snmp trap enterprise-oid 1.3.6.1.4.1.1</pre> <p>Example:</p> <pre>generic-trapnum 4 specific-trapnum 7 trap-oid</pre> <p>Example:</p> <pre>1.3.6.1.4.1.1.226.0.2.1 trap-var sysUpTime.0</pre>	<p>Generates an SNMP trap when the EEM applet is triggered.</p> <ul style="list-style-type: none"> In this example, the authenticationFailure trap is generated. <p>Note The specific trap number refers to the enterprise-specific trap, which is generated when an enterprise event occurs. If the generic trap number is not set to 6, the specific trap number you specify will be used to generate traps.</p>
<p>Step 7 action label info type snmp inform trap-oid <i>trap-oid-value</i> trap-var <i>trap-variable</i> community <i>community-string</i> ipaddr <i>ip-address</i></p> <p>Example:</p> <pre>Router(config-applet)# action 1.4 info type</pre> <p>Example:</p> <pre>snmp inform trap-oid 1.3.6.1.4.1.1.226.0.2.1</pre> <p>Example:</p> <pre>trap-var sysUpTime.0 community public ipaddr</pre> <p>Example:</p> <pre>172.69.16.2</pre>	<p>Generates an SNMP inform request when the EEM applet is triggered.</p> <ul style="list-style-type: none"> In this example, the inform request is generated for the sysUpTime.0 variable.

Command or Action	Purpose
Step 8 <code>exit</code> Example: <code>Router(config)# exit</code>	Exits global configuration mode and returns to privileged mode.

Configuring Variable Logic for EEM Applets

The Variable Logic for EEM Applets feature introduced in Cisco IOS Release 12.4(22)T and later releases, adds the ability to apply conditional logic within EEM applets. Before variable logic is introduced, applets have a linear structure where each action is executed in the order in which they are configured when the event is triggered. Conditional logic introduces a control structure that can change the flow of actions within applets depending on conditional expressions. Each control structure can contain a list of applet actions including looping and if/else actions which determine if the structure is executed or not.

The information in applet configuration mode is presented as background to set the context for the action commands.

To provide a consistent user interface between the Tool Command Language (Tcl) and the applet (CLI) based EEM policies, the following criteria are followed:

- Event specification criteria are written in Tcl in the Tcl based implementation.
- Event specification data is written using the CLI applet submode configuration statements in the applet-based implementation.

Applet configuration mode is entered using the event manager applet command. In applet configuration mode the config prompt changes to (config-applet)#. In applet configuration mode two types of config statements are supported:

- `event` - used to specify the event criteria to cause this applet to run.
- `action` - used to specify a built-in action to perform.

Multiple **action** applet config commands are allowed within an applet configuration. If no **action** applet config command is present, a warning is displayed, upon exit, stating no statements are associated with this applet. When no statements are associated with this applet, events get triggered but no action is taken. If no commands are specified in applet configuration mode, the applet will be removed upon exit. The exit applet config command is used to exit from applet configuration mode.

- [Prerequisites, page 56](#)
- [Configuring Variable Logic for EEM Applets, page 57](#)
- [Specifying a Loop of Conditional Blocks, page 57](#)
- [Specifying if else Conditional Blocks, page 58](#)
- [Specifying foreach Iterating Statements, page 60](#)
- [Using Regular Expressions, page 62](#)
- [Incrementing the Values of Variables, page 63](#)

Prerequisites

To use this feature, you must be running Cisco IOS Release 12.4(22)T or a later release.

Configuring Variable Logic for EEM Applets

EEM 3.0 adds new applet action commands to permit simple variable logic within applets.

To configure the variable logic using action commands perform the following tasks.

Specifying a Loop of Conditional Blocks

To specify a loop of a conditional block when an EEM applet is triggered, perform this task. In this task, a conditional loop is set to check if the value of the variable is less than 10. If the value of the variable is less than 10, then the message 'i is \$_i' is written to the syslog.



Note

Effective with Cisco IOS Release 12.4(22)T, the **set** (EEM) command is replaced by the **action set** command. See the **action label set** command for more information. If the set (EEM) command is entered in 12.4(22)T and later releases, the IOS parser translates the **set** command to the **action label set** command.

SUMMARY STEPS

1. **enable**
2. **configure terminal**
3. **event manager applet** *applet-name*
4. **action label set**
5. **action label while** *string_op1 operator string_op2*
6. Add any action as required.
7. **action label end**

DETAILED STEPS

Command or Action	Purpose
Step 1 enable Example: Router> enable	Enables privileged EXEC mode. <ul style="list-style-type: none"> • Enter your password if prompted.
Step 2 configure terminal Example: Router# configure terminal	Enters global configuration mode.

Command or Action	Purpose
<p>Step 3 event manager applet <i>applet-name</i></p> <p>Example:</p> <pre>Router(config)# event manager applet condition</pre>	Registers the applet with the Embedded Event Manager (EEM) and enters applet configuration mode.
<p>Step 4 action <i>label</i> set</p> <p>Example:</p> <p>Example:</p> <pre>Router(config-applet)#action 1.0 set i 2</pre>	<p>Sets an action for the event.</p> <ul style="list-style-type: none"> In this example, the value of the variable <i>i</i> is set to 2.
<p>Step 5 action <i>label</i> while <i>string_op1</i> <i>operator</i> <i>string_op2</i></p> <p>Example:</p> <pre>Router(config-applet)# action 2 while \$i lt 10</pre>	<p>Specifies a loop of a conditional block.</p> <ul style="list-style-type: none"> In this example, a loop is set to check if the value of the variable <i>i</i> is less than 10.
<p>Step 6 Add any action as required.</p> <p>Example:</p> <pre>Router(config-applet)# action 3 action syslog msg "i is \$i"</pre>	<p>Performs the action as indicated by the action command.</p> <ul style="list-style-type: none"> In this example, the message 'i is \$i' is written to the syslog.
<p>Step 7 action <i>label</i> end</p> <p>Example:</p> <p>Example:</p> <pre>Router(config-applet)# action 3 end</pre>	Exits from the running action.

Specifying if else Conditional Blocks

To specify the beginning of an if conditional statement followed by an else conditional statement, perform this task. The if or else conditional statements can be used in conjunction with each other or separately. In this task, the value of a variable is set to 5. An if conditional block is then specified to check if the value of the variable is less than 10. Provided the if conditional block is satisfied, an action command to output the message 'x is less than 10' is specified.

Following the if conditional block, an else conditional block is specified. Provided the if conditional block is not satisfied, an action command to output the message ‘x is greater than 10’ is specified.

SUMMARY STEPS

1. **enable**
2. **configure terminal**
3. **event manager applet** *applet-name*
4. **action** *label* **set** *variable-name* *variable-value*
5. **action** *label* **if** [*stringop1*] {**eq** | **gt** | **ge** | **lt** | **le** | **ne**} [*stringop2*]
6. Add any action as required.
7. **action** *label* **else**
8. Add any action as required.
9. **end**

DETAILED STEPS

Command or Action	Purpose
<p>Step 1 enable</p> <p>Example:</p> <pre>Router> enable</pre>	<p>Enables privileged EXEC mode.</p> <ul style="list-style-type: none"> • Enter your password if prompted.
<p>Step 2 configure terminal</p> <p>Example:</p> <pre>Router# configure terminal</pre>	<p>Enters global configuration mode.</p>
<p>Step 3 event manager applet <i>applet-name</i></p> <p>Example:</p> <pre>Router(config)# event manager applet ifcondition</pre>	<p>Registers the applet with the Embedded Event Manager (EEM) and enters applet configuration mode.</p>
<p>Step 4 action <i>label</i> set <i>variable-name</i> <i>variable-value</i></p> <p>Example:</p> <pre>Router(config-applet)# action 1.0 set x 5</pre>	<p>Sets an action for the event.</p> <ul style="list-style-type: none"> • In this example, the value of the variable x is set to 5.

Command or Action	Purpose
<p>Step 5 <code>action label if [stringop1] {eq gt ge lt le ne} [stringop2]</code></p> <p>Example:</p> <pre>Router(config-applet)# action 2.0 if \$x lt 10</pre>	<p>Specifies an if conditional statement.</p> <ul style="list-style-type: none"> In this example, an if conditional statement to check if the value of the variable is less than 10.
<p>Step 6 Add any action as required.</p> <p>Example:</p> <pre>Router(config-applet)# action 3.0 puts "\$x is less than 10"</pre>	<p>Performs the action as indicated by the action command.</p> <ul style="list-style-type: none"> In this example, the message '5 is less than 10' is displayed on the screen.
<p>Step 7 <code>action label else</code></p> <p>Example:</p> <pre>Router(config-applet)# action 4.0 else</pre>	<p>Specifies an else conditional statement</p>
<p>Step 8 Add any action as required.</p> <p>Example:</p> <pre>Router(config-applet)# action 5.0</pre>	<p>Performs the action as indicated by the action command.</p> <ul style="list-style-type: none"> In this example, the message '5 is greater than 10' is displayed on the screen.
<p>Step 9 <code>end</code></p> <p>Example:</p> <pre>Router(config-applet)# end</pre>	<p>Exits from the running action.</p>

Specifying foreach Iterating Statements

To specify a conditional statement that iterates over an input string using the delimiter as a tokenizing pattern, perform this task. The foreach iteration statement is used to iterate through a collection to get the desired information. The delimiter is a regular expression pattern string. The token found in each iteration is assigned to the given iterator variable. All arithmetic calculations are performed as long integers with out any checks for overflow. In this task, the value of the variable x is set to 5. An iteration statement is set to run through the input string red, blue, green, orange. For every element in the input string, a corresponding message is displayed on the screen.

SUMMARY STEPS

1. **enable**
2. **configure terminal**
3. **event manager applet** *applet-name*
4. **action label foreach** [*string-iterator*] [*string-input*] [*string-delimiter*]
5. Specify any action command
6. **action label end**

DETAILED STEPS

Command or Action	Purpose
Step 1 enable Example: <pre>Router> enable</pre>	Enables privileged EXEC mode. <ul style="list-style-type: none"> • Enter your password if prompted.
Step 2 configure terminal Example: <pre>Router# configure terminal</pre>	Enters global configuration mode.
Step 3 event manager applet <i>applet-name</i> Example: <pre>Router(config)# event manager applet iteration</pre>	Registers the applet with the Embedded Event Manager (EEM) and enters applet configuration mode.
Step 4 action label foreach [<i>string-iterator</i>] [<i>string-input</i>] [<i>string-delimiter</i>] Example: <pre>Router(config-applet)# action 2.0 foreach iterator "red blue green orange"</pre>	Iterates over an input string using the delimiter as a tokenizing pattern. <ul style="list-style-type: none"> • In this example, the iteration is run through the elements of the input string - red, blue, green and orange.
Step 5 Specify any action command Example: <pre>Router(config-applet)# action 3.0 puts "Iterator is \$iterator"</pre>	Performs the action as indicated by the action command. <ul style="list-style-type: none"> • In this example, the following message is displayed on the screen: <pre>Iterator is red Iterator is blue Iterator is green Iterator is orange</pre>

Command or Action	Purpose
Step 6 <code>action label end</code> Example: <pre>Router(config-applet)# action 4.0 end</pre>	Exits from the running action.

Using Regular Expressions

To match a regular expression pattern with an input string, perform this task. Using regular expressions, you can specify the rules for a set of possible strings to be matched.

SUMMARY STEPS

1. **enable**
2. **configure terminal**
3. **event manager applet** *applet-name*
4. **action label regexp** *string-pattern string-input* [*string-match* [*string-submatch1*] [*string-submatch2*] [*string-submatch3*]]

DETAILED STEPS

Command or Action	Purpose
Step 1 <code>enable</code> Example: <pre>Router> enable</pre>	Enables privileged EXEC mode. <ul style="list-style-type: none"> • Enter your password if prompted.
Step 2 <code>configure terminal</code> Example: <pre>Router# configure terminal</pre>	Enters global configuration mode.
Step 3 <code>event manager applet applet-name</code> Example: Example: <pre>Router(config)# event manager applet regexp</pre>	Registers the applet with the Embedded Event Manager (EEM) and enters applet configuration mode.

Command or Action	Purpose
<p>Step 4 <code>action label regexp string-pattern string-input [string-match [string-submatch1] [string-submatch2] [string-submatch3]]</code></p> <p>Example:</p> <pre>Router(config-applet)# action 2.0 regexp "(.*) (.*) (.*)" "red blue green" _match _sub1</pre>	<p>Specifies an expression pattern to match with an input string.</p> <ul style="list-style-type: none"> In this example, an input string of 'red blue green' is specified. When the expression pattern matches the input string, the entire result red blue green is stored in the variable _match and the submatch redis stored in the variable _sub1.

Incrementing the Values of Variables

To increment the value of variables, perform this task. In this task, the value of a variable is set to 20 and then the value is incremented by 12.

SUMMARY STEPS

1. `enable`
2. `configure terminal`
3. `event manager applet applet-name`
4. `action label set`
5. `action label increment variable-name long-integer`

DETAILED STEPS

Command or Action	Purpose
<p>Step 1 <code>enable</code></p> <p>Example:</p> <pre>Router> enable</pre>	<p>Enables privileged EXEC mode.</p> <ul style="list-style-type: none"> Enter your password if prompted.
<p>Step 2 <code>configure terminal</code></p> <p>Example:</p> <pre>Router# configure terminal</pre>	<p>Enters global configuration mode.</p>
<p>Step 3 <code>event manager applet applet-name</code></p> <p>Example:</p> <pre>Router(config)# event manager applet increment</pre>	<p>Registers the applet with the Embedded Event Manager (EEM) and enters applet configuration mode.</p>

Command or Action	Purpose
Step 4 <code>action label set</code> Example: <code>Router(config-applet)#action 1.0 set varname 20</code>	Sets an action for the event. <ul style="list-style-type: none"> In this example, the value of the variable is set to 20.
Step 5 <code>action label increment variable-name long-integer</code> Example: <code>Router(config-applet)#action 2.0 increment varname 12</code>	Increments the value of variable by the specified long integer. <ul style="list-style-type: none"> In this example, the value of the variable is incremented by 12.

Configuring Event SNMP Object

Perform this task to register the Simple Network Management Protocol (SNMP) object event for an Embedded Event Manager (EEM) applet that is run by sampling SNMP object.

To use this feature, you must be running Cisco IOS Release 15.0(1)M or a later release.

SUMMARY STEPS

- enable**
- configure terminal**
- event manager applet** *applet-name*
- event snmp-object oid** *oid-value* **type** *value* **sync** {yes | no} **skip** {yes | no} **istable** {yes | no} [default *seconds*] [**maxrun** *maxruntime-number*]
- exit**

DETAILED STEPS

Command or Action	Purpose
Step 1 <code>enable</code> Example: <code>Router> enable</code>	Enables privileged EXEC mode. <ul style="list-style-type: none"> Enter your password if prompted.
Step 2 <code>configure terminal</code> Example: <code>Router# configure terminal</code>	Enters global configuration mode.

Command or Action	Purpose
Step 3 <code>event manager applet <i>applet-name</i></code> Example: <pre>Router(config)# event manager applet manual- policy</pre>	Registers the applet with the Embedded Event Manager and enters applet configuration mode.

Command or Action	Purpose
<p>Step 4 <code>event snmp-object oid <i>oid-value</i> type <i>value</i> sync {yes no} skip {yes no} istable {yes no} [default <i>seconds</i>] [maxrun <i>maxruntime-number</i>]</code></p> <p>Example:</p> <pre>Router(config-applet)# event snmp-object oid 1.9.9.9 type gauge sync yes</pre> <p>Example:</p> <pre>action 1 syslog msg "oid = \$_snmp_oid"</pre> <p>Example:</p> <pre>action 2 syslog msg "request = \$_snmp_request"</pre> <p>Example:</p> <pre>action 3 syslog msg "request_type = \$_snmp_request_type"</pre> <p>Example:</p>	<p>Registers the Simple Network Management Protocol (SNMP) object event for an Embedded Event Manager (EEM) applet to intercept SNMP GET and SET requests for an object.</p> <p>The default for this command is that it is not configured. If this command is configured the defaults are the same as in the description of the syntax options,</p> <ul style="list-style-type: none"> • The oid keyword specifies the SNMP object identifier (object ID). • The <i>oid-value</i> argument can be the Object ID value of the data element, in SNMP dotted notation. An OID is defined as a type in the associated MIB, CISCO-EMBEDDED-EVENT-MGR-MIB, and each type has an object value. • The istable keyword specifies whether the OID is an SNMP table. • The sync keyword specifies that the applet is to run in synchronous mode. The return code from the applet indicates whether to reply to the SNMP request. The description for code 0 is “do not reply to the request” and the description for code 1 is “reply to the request”. When the return code from the applet replies to the request, a value is specified in the applet for the object using action snmp-object-value command. • The type keyword specifies the type of object. • The <i>value</i> argument is the value of the object. • The skip keyword specifies whether to skip CLI command execution. • The default keyword specifies the time to process the SET or GET request normally by the applet. If the default keyword is not specified, the default time period is set to 30 seconds. • The <i>milliseconds</i> argument is the time period during which the SNMP Object event detector waits for the policy to exit. • The maxrun keyword specifies the maximum runtime of the applet. If the maxrun keyword is specified, the <i>maxruntime-number</i> value must be specified. If the maxrun keyword is not specified, the default applet run time is 20 seconds. • The <i>milliseconds</i> argument is the maximum runtime of the apple in milliseconds. If the argument is not specified, the default 20-second run-time limit is used.

Command or Action	Purpose
Step 5 <code>exit</code> Example: <code>Router(config)# exit</code>	Exits global configuration mode and returns to privileged EXEC mode.

Disabling AAA Authorization

Perform this task to allow EEM policies to bypass AAA authorization when triggered.

SUMMARY STEPS

1. `enable`
2. `configure terminal`
3. `event manager applet applet-name [authorization bypass] [class class-options] [trap]`
4. `exit`

DETAILED STEPS

Command or Action	Purpose
Step 1 <code>enable</code> Example: <code>Router> enable</code>	Enables privileged EXEC mode. <ul style="list-style-type: none"> • Enter your password if prompted.
Step 2 <code>configure terminal</code> Example: <code>Router# configure terminal</code>	Enters global configuration mode.
Step 3 <code>event manager applet <i>applet-name</i> [authorization bypass] [class <i>class-options</i>] [trap]</code> Example: <code>Router(config-applet)# event manager applet one class A authorization bypass</code>	Registers the applet with the Embedded Event Manager (EEM) and enters applet configuration mode.

Command or Action	Purpose
Step 4 <code>exit</code> Example: <code>Router(config)# exit</code>	Exits global configuration mode and returns to privileged EXEC mode.

Configuring Description of an Embedded Event Manager Applet

Perform this task to describe an EEM applet. The description of an applet can be added in any order, before or after any other applet configuration. Configuring a new description for an applet that already has a description overwrites the current description. An applet description is optional.

Perform this task to configure a new description for an applet.

SUMMARY STEPS

1. `enable`
2. `configure terminal`
3. `event manager applet` *applet-name*
4. `description` *line*
5. `event syslog pattern` *regular-expression*
6. `action` *label* `syslog msg` *msg-text*
7. `end`

DETAILED STEPS

Command or Action	Purpose
Step 1 <code>enable</code> Example: <code>Router> enable</code>	Enables privileged EXEC mode. <ul style="list-style-type: none"> • Enter your password if prompted.
Step 2 <code>configure terminal</code> Example: <code>Router# configure terminal</code>	Enters global configuration mode.

Command or Action	Purpose
<p>Step 3 <code>event manager applet <i>applet-name</i></code></p> <p>Example:</p> <pre>Router(config)# event manager applet increment</pre>	Registers the applet with the EEM and enters applet configuration mode.
<p>Step 4 <code>description <i>line</i></code></p> <p>Example:</p> <pre>Router(config-applet)# description "This applet looks for the word count in syslog messages"</pre>	Adds or modifies the description of an EEM applet that is run by sampling Simple Network Management Protocol (SNMP).
<p>Step 5 <code>event syslog pattern <i>regular-expression</i></code></p> <p>Example:</p> <pre>Router(config-applet)# event syslog pattern "count"</pre>	Specifies the event criteria for an Embedded Event Manager (EEM) applet that is run by matching syslog messages.
<p>Step 6 <code>action <i>label</i> syslog msg <i>msg-text</i></code></p> <p>Example:</p> <pre>Router(config-applet)# action 1 syslog msg hi</pre>	<p>Specifies the action to be taken when an EEM applet is triggered.</p> <ul style="list-style-type: none"> In this example, the action taken is to write a message to syslog. The <i>msg-text</i> argument can be character text, an environment variable, or a combination of the two.
<p>Step 7 <code>end</code></p> <p>Example:</p> <pre>Router(config-applet)# end</pre>	Exits applet configuration mode and returns to privileged EXEC mode.

Configuration Examples for Writing EEM Policies Using the Cisco IOS CLI

- [Embedded Event Manager Applet Configuration Examples, page 70](#)
- [Embedded Event Manager Manual Policy Execution Examples, page 74](#)
- [Configuring and Tracking a Stub Object Using Embedded Event Manager Example, page 74](#)
- [Embedded Event Manager Watchdog System Monitor \(Cisco IOS\) Event Detector Configuration Example, page 75](#)
- [Configuration SNMP Library Extensions Examples, page 76](#)
- [Configuring Variable Logic for EEM Applets Examples, page 79](#)

- [Configuring Event SNMP-Object Examples, page 86](#)
- [Configuring Description of an EEM Applet Examples, page 86](#)

Embedded Event Manager Applet Configuration Examples

The following examples show how to create an EEM applet for some of the EEM event detectors. These examples follow steps outlined in the [Registering and Defining an Embedded Event Manager Applet, page 15](#).

Application-Specific Event Detector

The following example shows how a policy named EventPublish_A runs every 20 seconds and publishes an event type numbered 1 to an EEM subsystem numbered 798. The subsystem value of 798 specifies that a publish event has occurred from an EEM policy. A second policy named EventPublish_B is registered to run when the EEM event type 1 occurs with subsystem 798. When the EventPublish_B policy runs, it sends a message to syslog containing data passed as an argument from the EventPublish_A policy.

```
event manager applet EventPublish_A
  event timer watchdog time 20.0
  action 1.0 syslog msg "Applet EventPublish_A"
  action 2.0 publish-event sub-system 798 type 1 arg1 twenty
  exit
event manager applet EventPublish_B
  event application sub-system 798 type 1
  action 1.0 syslog msg "Applet EventPublish_B arg1 $_application_data1"
```

CLI Event Detector

The following example shows how to specify an EEM applet to run when the Cisco IOS **write memory** CLI command is run. The applet provides a notification that this event has occurred via a syslog message. In the example, the **sync** keyword is configured with the yes argument, and this means that the event detector is notified when this policy completes running. The exit status of the policy determines whether the CLI command will be executed. In this example, the policy exit status is set to one and the CLI command runs.

```
event manager applet cli-match
  event cli pattern "write mem.*" sync yes
  action 1.0 syslog msg "$_cli_msg Command Executed"
  set 2.0 _exit_status 1
```

The following example shows an applet which matches the **cli pattern** with the test argument. When **show access-list test** is entered, the CLI event detector matches the test argument, and the applet is triggered. The **debug event manager detector cli** output is added to show num_matches is set to one.

```
!
event manager applet EEM-PIPE-TEST
  event cli pattern "test" sync yes
  action 1.0 syslog msg "Pattern matched!"
!
*Aug 23 23:19:59.827: check_eem_cli_policy_handler: command_string=show access-lists test
*Aug 23 23:19:59.827: check_eem_cli_policy_handler: num_matches = 1, response_code = 4
*Aug 23 23:19:59.843: %HA_EM-6-LOG: EEM-PIPE-TEST: Pattern matched!
```



Note

The functionality provided in the CLI event detector only allows a regular expression pattern match on a valid IOS CLI command itself. This does not include text after a pipe (|) character when redirection is used.

The following example shows that when **show version | include test** is entered, the applet fails to trigger because the CLI event detector does not match on characters entered after the pipe (|) character and the **debug event manager detector cli** output shows num_matches is set to zero.

```
*Aug 23 23:20:16.827: check_eem_cli_policy_handler: command_string=show version
*Aug 23 23:20:16.827: check_eem_cli_policy_handler: num_matches = 0, response_code = 1
```

Counter Event Detector and Timer Event Detector

The following example shows that the EventCounter_A policy is configured to run once a minute and to increment a well-known counter called critical_errors. A second policy--EventCounter_B--is registered to be triggered when the well-known counter called critical_errors exceeds a threshold of 3. When the EventCounter_B policy runs, it resets the counter to 0.

```
event manager applet EventCounter_A
  event timer watchdog time 60.0
  action 1.0 syslog msg "EventCounter_A"
  action 2.0 counter name critical_errors op inc value 1
  exit
event manager applet EventCounter_B
  event counter name critical_errors entry-op gt entry-val 3 exit-op lt exit-val 3
  action 1.0 syslog msg "EventCounter_B"
  action 2.0 counter name critical_errors op set value 0
```

Interface Counter Event Detector

The following example shows how a policy named EventInterface is triggered every time the receive_throttle counter for Fast Ethernet interface 0/0 is incremented by 5. The polling interval to check the counter is specified to run once every 90 seconds.

```
event manager applet EventInterface
  event interface name FastEthernet0/0 parameter receive_throttle entry-op ge entry-val 5
  entry-val-is-increment true poll-interval 90
  action 1.0 syslog msg "Applet EventInterface"
```

Resource Event Detector

The following example shows how to specify event criteria based on an ERM event report for a policy defined to report high CPU usage:

```
event manager applet policy-one
  event resource policy cpu-high
  action 1.0 syslog msg "CPU high at $_resource_current_value percent"
```

RF Event Detector

The RF event detector is only available on networking devices that contain dual Route Processors (RPs). The following example shows how to specify event criteria based on an RF state change notification:

```
event manager applet start-rf
  event rf event rf_prog_initialization
  action 1.0 syslog msg "rf state rf_prog_initialization reached"
```

RPC Event Detector

The RPC event detector allows an outside entity to make a Simple Object Access Protocol (SOAP) request to the router or a switch and invokes a defined EEM policy or script. The following example shows how an EEM applet called Event_RPC is being registered to run an EEM script:

```
event manager applet Event_RPC
```

```
event rpc
action print puts "hello there"
```

The following example shows the format of the SOAP request and reply message:

```
<?xml version="1.0" encoding="UTF-8"?>
<SOAP:Envelope xmlns:SOAP="http://www.cisco.com/eem.xsd">
  <SOAP:Body>
    <run_eemscript>
      <script_name>Event_RPC</script_name>
    </run_eemscript>
  </SOAP:Body>
</SOAP:Envelope>
]]>]]>
<?xml version="1.0" encoding="UTF-8"?><SOAP:Envelope xmlns:SOAP="http://www.cisco.com/
eem.xsd"><SOAP:Body><run_eemscript_response><return_code>0</return_code><output></
output></run_eemscript_response></SOAP:Body></SOAP:Envelope>]]>]]>
```

SNMP Event Detector

The following example shows how to specify an EEM applet to run when the CPU usage is greater than 75 percent. When the EEM applet runs, the CLI commands **enable** and **show cpu processes** are run, and an e-mail containing the result of the **show cpu processes** command is sent to an engineer.

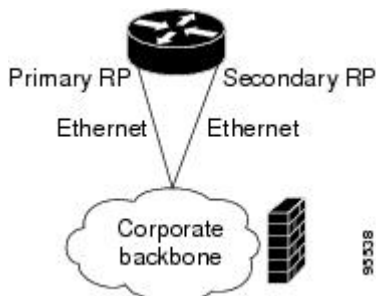
```
event manager applet snmpcpuge75
  event snmp oid 1.3.6.1.4.1.9.9.109.1.1.1.3.1 get-type exact entry-op ge entry-val 75
  poll-interval 10
  action 1.0 cli command "enable"
  action 2.0 cli command "show process cpu"
  action 3.0 mail server "192.168.1.146" to "engineer@cisco.com" from "devtest@cisco.com"
  subject "B25 PBX Alert" body "$_cli_result"
```

The next example is more complex and shows how to configure an EEM applet that causes a switch to the secondary (redundant) Route Processor (RP) when the primary RP runs low on memory.

This example illustrates a method for taking preventative action against a software fault that causes a memory leak. The action taken here is designed to reduce downtime by switching over to a redundant RP when a possible memory leak is detected.

The figure below shows a dual RP router that is running an EEM image. An EEM applet has been registered through the CLI using the **event manager applet** command. The applet will run when the available memory on the primary RP falls below the specified threshold of 5,120,000 bytes. The applet actions are to write a message to syslog that indicates the number of bytes of memory available and to switch to the secondary RP.

Figure 1



The commands used to register the policy are shown below.

```
event manager applet memory-demo
  event snmp oid 1.3.6.1.4.1.9.9.48.1.1.1.6.1 get-type exact entry-op lt entry-val 5120000
```



```
poll-interval 90
 action 1.0 syslog priority critical msg "Memory exhausted; current available memory is
$_snmp_oid_val bytes"
 action 2.0 force-switchover
```

The registered applet is displayed using the **show event manager policy registered** command:

```
Router# show event manager policy registered
No.  Type      Event Type      Time Registered      Name
1    applet    snmp            Thu Jan30 05:57:16 2003 memory-demo
oid {1.3.6.1.4.1.9.9.48.1.1.1.6.1} get-type exact entry-op lt entry-val {5120000}
poll-interval 90
 action 1.0 syslog priority critical msg "Memory exhausted; current available memory is
$_snmp_oid_val bytes"
 action 2.0 force-switchover
```

For the purpose of this example, a memory depletion is forced on the router, and a series of **show memory** commands are executed to watch the memory deplete:

```
Router# show memory
      Head      Total(b)      Used(b)      Free(b)      Lowest(b)      Largest(b)
Processor 53585260 212348444 119523060 92825384 92825384 92365916
Fast      53565260    131080    70360      60720      60720      60668
Router# show memory
      Head      Total(b)      Used(b)      Free(b)      Lowest(b)      Largest(b)
Processor 53585260 212364664 164509492 47855172 47855172 47169340
Fast      53565260    131080    70360      60720      60720      60668
Router# show memory
      Head      Total(b)      Used(b)      Free(b)      Lowest(b)      Largest(b)
Processor 53585260 212369492 179488300 32881192 32881192 32127556
Fast      53565260    131080    70360      60720      60720      60668
```

When the threshold is reached, an EEM event is triggered. The applet named memory-demo runs, causing a syslog message to be written to the console and a switch to be made to the secondary RP. The following messages are logged:

```
00:08:31: %HA_EM-2-LOG: memory-demo: Memory exhausted; current available memory is
4484196 bytes
00:08:31: %HA_EM-6-FMS_SWITCH_HARDWARE: fh_io_msg: Policy has requested a hardware
switchover
```

The following is partial output from the **show running-config** command on both the primary RP and the secondary (redundant) RP:

```
redundancy
 mode sso
 .
 .
 !
event manager applet memory-demo
 event snmp oid 1.3.6.1.4.1.9.9.48.1.1.1.6.1 get-type exact entry-op lt entry-val
5120000 poll-interval 90
 action 1.0 syslog priority critical msg "Memory exhausted; current available memory
is $_snmp_oid_val bytes"
 action 2.0 force-switchover
```

SNMP Notification Event Detector

The following example shows how to configure the **snmp-server community public RW** and **snmp-server manager** commands before **event snmp-notification** is configured.

```
snmp-server community public RW
 snmp-server manager
```

The following example shows how an EEM applet called `SNMP_Notification` is being registered to run an EEM script when the router receives an SNMP notification on destination IP address 192.168.1.1 for object ID 1 whose value equals 10.

```
event manager applet SNMP_Notification
  event snmp-notification dest_ip_address 192.168.1.1 oid 1 op eq oid-value 10
  action 1 policy eem_script
```

Syslog Event Detector

The following example shows how to specify an EEM applet to run when syslog identifies that Ethernet interface 1/0 is down. The applet sends a message about the interface to syslog.

```
event manager applet interface-down
  event syslog pattern ".*UPDOWN.*Ethernet1/0.*" occurs 4
  action 1.0 syslog msg "Ethernet interface 1/0 changed state 4 times"
```

Embedded Event Manager Manual Policy Execution Examples

The following examples show how to use the none event detector to configure an EEM policy (applet or script) to be run manually.

Using the event manager run Command

This example shows how to run a policy manually using the **event manager run** command. The policy is registered using the **event none** command under applet configuration mode and then run from global configuration mode using the **event manager run** command.

```
event manager applet manual-policy
  event none
  action 1.0 syslog msg "Manual-policy triggered"
  end
!
event manager run manual-policy
```

Using the action policy Command

This example shows how to run a policy manually using the **action policy** command. The policy is registered using the **event none** command under applet configuration mode, and then the policy is executed using the **action policy** command in applet configuration mode.

```
event manager applet manual-policy
  event none
  action 1.0 syslog msg "Manual-policy triggered"
  exit
!
event manager applet manual-policy-two
  event none
  action 1.0 policy manual-policy
  end
!
event manager run manual-policy-two
```

Configuring and Tracking a Stub Object Using Embedded Event Manager Example

This example shows how to create a stub object, set the state of the stub object, and configure an EEM applet to be run when the tracked object changes. The enhanced object tracking (EOT) event detector is

used, and actions are specified to both set and read the state of the object. This example allows EEM to define an EOT object that may be manipulated by other EOT clients. An EEM policy can be a trigger for any EOT object including objects defined for other EOT clients or for an object defined by EEM.

```
track 10 stub-object
  default-state down
!
event manager applet track-ten
  event track 10 state any
  action 1.0 track set 10 state up
  action 2.0 track read 10
```

Embedded Event Manager Watchdog System Monitor (Cisco IOS) Event Detector Configuration Example

The following example shows how to configure three EEM applets to demonstrate how the Cisco IOS watchdog system monitor (IOSWDSysMon) event detector works.

Watchdog System Monitor Sample1 Policy

The first policy triggers an applet when the average CPU usage for the process named IP Input is greater than or equal to 1 percent for 10 seconds:

```
event manager applet IOSWD_Sample1
  event ioswdsysmon sub1 cpu-proc taskname "IP Input" op ge val 1 period 10
  action 1.0 syslog msg "IOSWD_Sample1 Policy Triggered"
```

Watchdog System Monitor Sample2 Policy

The second policy triggers an applet when the total amount of memory used by the process named Net Input is greater than 100 kb:

```
event manager applet IOSWD_Sample2
  event ioswdsysmon sub1 mem-proc taskname "Net Input" op gt val 100 is-percent false
  action 1.0 syslog msg "IOSWD_Sample2 Policy Triggered"
```

Watchdog System Monitor Sample3 Policy

The third policy triggers an applet when the total amount of memory used by the process named IP RIB Update has increased by more than 50 percent over the sample period of 60 seconds:

```
event manager applet IOSWD_Sample3
  event ioswdsysmon sub1 mem-proc taskname "IP RIB Update" op gt val 50 is-percent true
  period 60
  action 1.0 syslog msg "IOSWD_Sample3 Policy Triggered"
```

The three policies are configured, and then repetitive large pings are made to the networking device from several workstations, causing the networking device to register some usage. This will trigger policies 1 and 2, and the console will display the following messages:

```
00:42:23: %HA_EM-6-LOG: IOSWD_Sample1: IOSWD_Sample1 Policy Triggered
00:42:47: %HA_EM-6-LOG: IOSWD_Sample2: IOSWD_Sample2 Policy Triggered
```

To view the policies that are registered, use the **show event manager policy registered** command:

```
Router# show event manager policy registered
No.  Class  Type  Event Type      Trap  Time Registered      Name
1    applet  system ioswdsysmon      Off   Fri Jul 23 02:27:28 2004 IOSWD_Sample1
      sub1  cpu_util {taskname {IP Input} op ge val 1 period 10.000 }
```

```

action 1.0 syslog msg "IOSWD_Sample1 Policy Triggered"
2  applet system ioswdsysmon Off Fri Jul 23 02:23:52 2004 IOSWD_Sample2
subl mem_used {taskname {Net Input} op gt val 100 is_percent FALSE}
action 1.0 syslog msg "IOSWD_Sample2 Policy Triggered"
3  applet system ioswdsysmon Off Fri Jul 23 03:07:38 2004 IOSWD_Sample3
subl mem_used {taskname {IP RIB Update} op gt val 50 is_percent TRUE period 60.000 }
action 1.0 syslog msg "IOSWD_Sample3 Policy Triggered"

```

Configuration SNMP Library Extensions Examples

- [SNMP Get Operations Examples, page 76](#)
- [SNMP GetID Operations Examples, page 76](#)
- [Set Operations Examples, page 77](#)
- [Generating SNMP Notifications Examples, page 78](#)

SNMP Get Operations Examples

The following example shows how to send a get request to the local host.

```

Router(config)# event manager applet snmp
Router(config-applet)# event snmp oid
1.3.6.1.2.1.1.1.0 get-type exact entry-op
lt entry-val
5120000 poll-interval
90
Router(config-applet)# action 1.3 info type snmp oid
1.3.6.1.2.1.1.1.0 get-type exact
community
public
Router(config-applet)# action 1.3 info type snmp oid
1.3.6.1.2.1.1.4.0 get-type next community
public

```

The following log message will be written to the SNMP event manager log:

```

1d03h:%HA_EM-6-LOG: lg: 1.3.6.1.2.1.1.1.0
1d04h:%HA_EM-6-LOG: lgn: 1.3.6.1.2.1.1.5.0

```

The following example shows how to send a get request to a remote host.

```

Router(config)# event manager applet snmp
Router(config-applet)# event snmp oid
1.3.6.1.2.1.1.1.0 get-type exact entry-op
lt entry-val
5120000 poll-interval
90
Router(config-applet)# action 1.3 info type snmp oid
1.3.6.1.2.1.1.4.0 get-type next community
public ipaddr
172.17.16.69
Router(config-applet)# action 1.3 info type snmp getid
1.3.6.1.2.1.1.1.0 community
public ipaddr
172.17.16.69

```

The following log message is written to the SNMP event manager log:

```

1d03h:%HA_EM-6-LOG: lg: 1.3.6.1.2.1.1.1.0
1d04h:%HA_EM-6-LOG: lgn: 1.3.6.1.2.1.1.5.0

```

SNMP GetID Operations Examples

The following example shows how to send a getid request to the local host.

```
Router(config)# event manager applet snmp
Router(config-applet)# event snmp oid
1.3.6.1.2.1.1.1.0 get-type exact entry-op
lt entry-val
5120000 poll-interval
90
Router(config-applet)# action 1.3 info type snmp getid
community
public
```

The following log message is written to the SNMP event manager log:

```
1d04h:%HA_EM-6-LOG: lgid: _info_snmp_sysname_oid=1.3.6.1.2.1.1.5.0
1d04h:%HA_EM-6-LOG: lgid: _info_snmp_sysname_value=jubjub.cisco.com
1d04h:%HA_EM-6-LOG: lgid: _info_snmp_syslocation_oid=1.3.6.1.2.1.1.6.0
1d04h:%HA_EM-6-LOG: lgid: _info_snmp_syslocation_value=
1d04h:%HA_EM-6-LOG: lgid: _info_snmp_sysdescr_oid=1.3.6.1.2.1.1.1.0
1d04h:%HA_EM-6-LOG: lgid: _info_snmp_sysobjectid_oid=1.3.6.1.2.1.1.2.0
1d04h:%HA_EM-6-LOG: lgid: _info_snmp_sysobjectid_value=products.222
1d04h:%HA_EM-6-LOG: lgid: _info_snmp_ssysuptime_oid=1.3.6.1.2.1.1.3.0
1d04h:%HA_EM-6-LOG: lgid: _info_snmp_ssysuptime_oid=10131676
1d04h:%HA_EM-6-LOG: lgid: _info_snmp_syscontact_oid=1.3.6.1.2.1.1.4.0
1d04h:%HA_EM-6-LOG: lgid: _info_snmp_syscontact_value=YYY
```

The following example shows how to send a getid request to a remote host.

```
Router(config)# event manager applet snmp
Router(config-applet)# event snmp oid
1.3.6.1.2.1.1.1.0 get-type exact entry-op
lt entry-val
5120000 poll-interval
90
Router(config-applet)# action 1.3 info type snmp getid
1.3.6.1.2.1.1.1.0 community
public ipaddr
172.17.16.69
```

The following log message is written to the SNMP event manager log:

```
1d04h:%HA_EM-6-LOG: lgid: _info_snmp_sysname_oid=1.3.6.1.2.1.1.5.0
1d04h:%HA_EM-6-LOG: lgid: _info_snmp_sysname_value=jubjub.cisco.com
1d04h:%HA_EM-6-LOG: lgid: _info_snmp_syslocation_oid=1.3.6.1.2.1.1.6.0
1d04h:%HA_EM-6-LOG: lgid: _info_snmp_syslocation_value=
1d04h:%HA_EM-6-LOG: lgid: _info_snmp_sysdescr_oid=1.3.6.1.2.1.1.1.0
1d04h:%HA_EM-6-LOG: lgid: _info_snmp_sysobjectid_oid=1.3.6.1.2.1.1.2.0
1d04h:%HA_EM-6-LOG: lgid: _info_snmp_sysobjectid_value=products.222
1d04h:%HA_EM-6-LOG: lgid: _info_snmp_ssysuptime_oid=1.3.6.1.2.1.1.3.0
1d04h:%HA_EM-6-LOG: lgid: _info_snmp_ssysuptime_oid=10131676
1d04h:%HA_EM-6-LOG: lgid: _info_snmp_syscontact_oid=1.3.6.1.2.1.1.4.0
1d04h:%HA_EM-6-LOG: lgid: _info_snmp_syscontact_value=YYY
```

Set Operations Examples

The following example shows how to perform a set operation on the local host.

```
Router(config)# event manager applet snmp
Router(config-applet)# event snmp oid
1.3.6.1.2.1.1.1.0 get-type exact entry-op
lt entry-val
5120000 poll-interval
90
Router(config-applet)# action 1.3 info type snmp oid
1.3.6.1.2.1.1.4.0 set-type
integer
5 sysName.0 community
public
```

The following log message is written to the SNMP event manager log:

```
1d04h:%HA_EM-6-LOG: lset: 1.3.6.1.2.1.1.4.0
1d04h:%HA_EM-6-LOG: lset: XXX
```

The following example shows how to perform a set operation on a remote host.

```
Router(config)# event manager applet snmp
Router(config-applet)# event snmp oid
1.3.6.1.2.1.1.1.0 get-type exact entry-op
lt entry-val
5120000 poll-interval
90
Router(config-applet)# action 1.3 info type snmp oid
1.3.6.1.2.1.1.4.0 set-type integer
5 sysName.0 community
public ipaddr
172.17.16.69
```

The following log message is written to the SNMP event manager log:

```
1d04h:%HA_EM-6-LOG: lset: 1.3.6.1.2.1.1.4.0
1d04h:%HA_EM-6-LOG: lset: XXX
```

Generating SNMP Notifications Examples

The following example shows how to configure SNMP traps for the sysUpTime.0 variable:

```
Router(config)# event manager applet snmp
Router(config-applet)# event snmp oid
1.3.6.1.4.1.9.9.48.1.1.1.6.1 get-type exact entry-op
lt entry-val
5120000 poll-interval
90
Router(config-applet)# action 1.3 info type snmp var
sysUpTime.0 oid
1.3.6.1.4.1.9.9.43.1.1.6.1.3.41 integer
2
Router(config-applet)# action 1.4 info type snmp trap
enterprise-oid
ciscoSyslogMIB.2 generic-trapnum
6 specific-trapnum
1 trap-oid
1.3.6.1.4.1.9.9.41.2.0.1 trap-var
sysUpTime.0
```

The following output is generated if the debug snmp packets command is enabled:

```
Router# debug snmp packets
1d04h: SNMP: Queuing packet to 172.69.16.2
1d04h: SNMP: V1 Trap, ent ciscoSyslogMIB.2, addr 172.19.rap 1
clogHistoryEntry.3 = 4
clogHistoryEntry.6 = 9999
1d04h: SNMP: Queuing packet to 172.19.208.130
1d04h: SNMP: V1 Trap, ent ciscoSyslogMIB.2, addr 172.19.rap 1
clogHistoryEntry.3 = 4
clogHistoryEntry.6 = 9999
1d04h: SNMP: Packet sent via UDP to 172.69.16.2
1d04h: SNMP: Packet sent via UDP to 172.69.16.2
infra-view10:
Packet Dump:
30 53 02 01 00 04 04 63 6f 6d 6d a4 48 06 09 2b
06 01 04 01 09 09 29 02 40 04 ac 13 d1 17 02 01
06 02 01 01 43 04 00 9b 82 5d 30 29 30 12 06 0d
2b 06 01 04 01 09 09 29 01 02 03 01 03 02 01 04
30 13 06 0d 2b 06 01 04 01 09 09 29 01 02 03 01
06 02 02 27 0f
Received SNMPv1 Trap:
```

```

Community: comm
Enterprise: ciscoSyslogMIBNotificationPrefix
Agent-addr: 172.19.209.23
Enterprise Specific trap.
Enterprise Specific trap: 1
Time Ticks: 10191453
clogHistSeverity = error(4)
clogHistTimestamp = 9999

```

The following example shows how to configure SNMP inform requests for the sysUpTime.0 variable:

```

Router(config)# event manager applet snmp
Router(config-applet)# event snmp oid
1.3.6.1.4.1.9.9.48.1.1.1.6.1 get-type exact entry-op
  lt entry-val
  5120000 poll-interval
  90
Router(config-applet)# action 1.3 info type snmp var
  sysUpTime.0 oid
1.3.6.1.4.1.9.9.43.1.1.6.1.3.41 integer
  2
Router(config-applet)# action 1.4 info type snmp inform
trap-oid
  1.3.6.1.4.1.9.9.43.2.0.1 trap-var
  sysUpTime.0 community
  public ipaddr
  172.19.209.24

```

The following output is generated if the debug snmp packets command is enabled:

```

Router# debug snmp packets
1d04h: SNMP: Inform request, reqid 24, errstat 0, erridx 0
sysUpTime.0 = 10244391
snmpTrapOID.0 = ciscoConfigManMIB.2.0.1
ccmHistoryEventEntry.3.40 = 1
1d04h: SNMP: Packet sent via UDP to 172.19.209.24.162
1d04h: SNMP: Packet received via UDP from 172.19.209.24 on FastEthernet0/0
1d04h: SNMP: Response, reqid 24, errstat 0, erridx 0
1d04h: SNMP: Response, reqid 24, errstat 0, erridx 0
1d04h: SNMP: Inform request, reqid 25, errstat 0, erridx 0
sysUpTime.0 = 10244396
snmpTrapOID.0 = ciscoConfigManMIB.2.0.1
ccmHistoryEventEntry.3.41 = 2
1d04h: SNMP: Packet sent via UDP to 172.19.209.24.162
1d04h: SNMP: Packet received via UDP from 172.19.209.24 on FastEthernet0/0
1d04h: SNMP: Response, reqid 25, errstat 0, erridx 0
1d04h: SNMP: Response, reqid 25, errstat 0, erridx 0
Router# debug snmp packets
5d04h: SNMP: Packet received via UDP from 172.19.209.23 on FastEthernet0/0
5d04h: SNMP: Inform request, reqid 24, errstat 0, erridx 0
sysUpTime.0 = 10244391
snmpTrapOID.0 = ciscoConfigManMIB.2.0.1
ccmHistoryEventEntry.3.40 = 1
5d04h: dest if_index = 1
5d04h: dest ip addr= 172.19.209.24
5d04h: SNMP: Response, reqid 24, errstat 0, erridx 0
5d04h: SNMP: Packet sent via UDP to 172.19.209.23.57748
5d04h: SNMP: Packet received via UDP from 172.19.209.23 on FastEthernet0/0
5d04h: SNMP: Inform request, reqid 25, errstat 0, erridx 0

```

Configuring Variable Logic for EEM Applets Examples

The following sections provide examples on some selected action commands. For information on all the action commands supporting variable logic within applets, see the table below.

In this example, conditional loops **while**, **if** and **foreach** are used to print data. Other action commands such as **action divide**, **action increment** and **action puts** are used to define the actions to be performed when the conditions are met.

```
event manager applet printdata

event none

action 100 set colors "red green blue"

action 101 set shapes "square triangle rectange"

action 102 set i "1"

action 103 while $i lt 6

action 104  divide $i 2

action 105  if $_remainder eq 1

action 106   foreach _iterator "$colors"

action 107    puts newline "$_iterator "

action 108   end

action 109   puts ""

action 110  else

action 111   foreach _iterator "$shapes"

action 112    puts newline "$_iterator "

action 113   end

action 114   puts ""

action 115  end

action 116  increment i

action 117 end
```


When the event manager applet ex is run, the following output is obtained:

```
event manager run printdata  
  
red green blue  
  
square triangle rectange  
  
red green blue  
  
square triangle rectange  
  
red green blue
```

In this example, two environment variables `poll_interface` and `max_rx_rate` are set to `F0/0` and `3` respectively. Every 30 seconds there is a poll on an interface for rx rate. If the rx rate is greater than the threshold, a syslog message is displayed.

This applet makes use of the foreach conditional statement to poll the interface, the if conditional block to compare the value under RXPS with max_rx_rate that was set in the EEM environment variable.

```

event manager environment poll_interfaces F0/0
event manager environment max_rx_rate 3

ev man app check_rx_rate
ev timer watchdog name rx_timer time 30
action 100 foreach int $poll_interfaces
action 101 cli command "en"
action 102 cli command "show int $int summ | beg -----"
action 103 foreach line $_cli_result "\n"
action 105 regexp ".*[0-9]+\s+[0-9]+\s+[0-9]+\s+[0-9]+\s+[0-9]+\s+([0-9]+)\s+.*" $line
junk rxps
action 106 if $_regexp_result eq 1
action 107 if $rxps gt $max_rx_rate
action 108 syslog msg "Warning rx rate for $int is > than threshold. Current value is
$rxps (threshold is $max_rx_rate)"
action 109 end
action 110 end
action 111 end
action 112 end

```

Example syslog message:

```
Oct 16 09:29:26.153: %HA_EM-6-LOG: c: Warning rx rate for F0/0 is > than threshold.
Current value is 4 (threshold is 3)
```

The output of show int F0/0 summ is of the format:

```

#show int f0/0 summ

*: interface is up
IHQ: pkts in input hold queue      IQD: pkts dropped from input queue
OHQ: pkts in output hold queue     OQD: pkts dropped from output queue
RXBS: rx rate (bits/sec)           RXPS: rx rate (pkts/sec)
TXBS: tx rate (bits/sec)           TXPS: tx rate (pkts/sec)
TRTL: throttle count

Interface          IHQ  IQD  OHQ  OQD  RXBS RXPS  TXBS TXPS TRTL
-----
* FastEthernet0/0    0 87283  0   0   0   0   0   0   0

```

**Note**

To use other action commands supporting variable logic within applets, use the commands listed in the table below.

Table 6 Available action commands

Action Commands	Purpose
action add	Adds the value of two variables when an EEM applet is triggered.
action append	Appends the given value to the current value of a variable when an EEM applet is triggered.
action break	Causes an immediate exit from a loop of actions when an EEM applet is triggered
action comment	Adds comments to an applet when an EEM applet is triggered
action context retrieve	Retrieves variables identified by a given set of context name keys when an EEM applet is triggered.
action context save	Saves information across multiple policy triggers when an EEM applet is triggered.
action continue	Continues with a loop of actions when an EEM applet is triggered.
action decrement	Decrements the value of a variable when an EEM applet is triggered.
action divide	Divides the dividend value by the given divisor value when an EEM applet is triggered.
action else	Specifies the beginning of else conditional action block in if / else conditional action block when an EEM applet is triggered.
action elseif	Identifies the beginning of the else conditional action block in the else / if conditional action block when an EEM applet is triggered.
action end	Specifies the identification of the end of an conditional action block in the if / else and while conditional action block when an EEM applet is triggered.
action exit	Specifies an immediate exit from the running applet configuration when an EEM applet is triggered.

Action Commands	Purpose
action foreach	Specifies the iteration of an input string using the delimiter as a tokenizing pattern, when an EEM applet is triggered.
action gets	Gets an input from the local TTY in a synchronous applet and store the value in the given variable when an EEM applet is triggered.
action if	Specifies the identification of the beginning of an if conditional block when an EEM applet is triggered.
action if goto	Instructs the applet to jump to a given label if the specified condition is true when an EEM applet is triggered.
action increment	Increments the value of a variable when an EEM applet is triggered.
action info type interface-names	Specifies the action of obtaining interface names when an EEM applet is triggered.
action info type snmp getid	Retrieves the individual variables from a Simple Network Management Protocol (SNMP) entity during the SNMP get operation.
action info type snmp inform	Sends an SNMP inform requests when an EEM applet is triggered.
action info type snmp oid	Specifies the type of SNMP get operation and the object to retrieve during the SNMP set operation, when an EEM applet is triggered.
action info type snmp trap	Sends SNMP trap requests when an EEM applet is triggered.
action info type snmp var	Creates a variable for an SNMP object identifier (OID) and its value from an EEM applet
action multiply	Specifies the action of multiplying the variable value with a specified given integer value when an EEM applet is triggered.
action puts	Enables the action of printing data directly to the local tty when an EEM applet is triggered.
action regexp	Specifies the action of matching a regular expression pattern on an input string when an EEM applet is triggered.
action set (EEM)	Specifies the action of setting the value of a variable when an EEM applet is triggered.

Action Commands	Purpose
action string compare	Specifies the action of comparing two unequal strings when an EEM applet is triggered.
action string equal	Specifies the action of verifying whether or not two strings are equal when an EEM applet is triggered
action string first	Specifies the action of returning the index on the first occurrence of string1 within string2 when an EEM applet is triggered.
action string index	Specifies the action of returning the characters specified at a given index value when an EEM applet is triggered.
action string last	Specifies the action of returning the index on the last occurrence of string1 within string 2 when an EEM applet is triggered.
action string length	Specifies the action of returning the number of characters in a string when the EEM applet is triggered.
action string match	Specifies the action of returning 1 to the <code>\$_string_result</code> , if the string matches the pattern when an EEM applet is triggered.
action string range	Specifies the action of storing a range of characters in a string when an EEM applet is triggered.
action string replace	Specifies the action of storing a new string by replacing range of characters in the specified string when an EEM applet is triggered.
action string tolower	Specifies the action of storing specific range of characters of a string in lowercase when an EEM applet is triggered.
action string toupper	Specifies the action of storing specific range of characters of a string in uppercase when an EEM applet is triggered.
action string trim	Specifies the action to trim a string when an EEM applet is triggered.
action string trimleft	Specifies the action to trim the characters of one string from the left end of another string when an EEM applet is triggered.
action string trimright	Specifies the action to trim the characters one string from the right end of another string when an EEM applet is triggered.

Action Commands	Purpose
action subtract	Subtracts the value of a variable from another value when an EEM applet is triggered.
action while	Specifies the action of identifying the beginning of a loop of conditional block when an EEM applet is triggered.

Configuring Event SNMP-Object Examples

The following example shows the SET operation and the value to set is in `$_snmp_value` and it is managed by the script. The example below saves the oid and its value as contexts to be retrieved later.

```
event manager applet snmp-object1
  description "APPLET SNMP-OBJ-1"
  event snmp-object oid 1.3.6.1.2.1.31.1.1.1.18 type string sync no skip no istable yes
  default 0 action 1 syslog msg "SNMP-OBJ1:TRIGGERED" facility "SNMP_OBJ"
  action 2 context save key myoid variable "_snmp_oid"
  action 3 context save key myvalue variable "_snmp_value"
```

Configuring Description of an EEM Applet Examples

The following example shows how to add or modify the description for an Embedded Event Manager (EEM) applet that is run by sampling Simple Network Management Protocol (SNMP):

```
event manager applet test
  description "This applet looks for the word count in syslog messages"
  event syslog pattern "count"
  action 1 syslog msg hi
```

Where to Go Next

- For information about EEM overview, go to “Embedded Event Manager Overview” module.
- For information about writing EEM policies using Tcl, go to “Writing Embedded Event Manager Policies Using Tcl” module.

Additional References

The following sections provide references related to writing EEM policies Using the Cisco IOS CLI.

Related Documents

Related Topic	Document Title
Cisco IOS commands	Cisco IOS Master Commands List, All Releases

Related Topic	Document Title
Network Management commands (including EEM commands): complete command syntax, defaults, command mode, command history, usage guidelines, and examples	<i>Cisco IOS Network Management Command Reference</i>
Embedded Event Manager overview	Embedded Event Manager Overview module
Embedded Event Manager policy writing using Tcl	Writing Embedded Event Manager Policies Using Tcl module
Configuring enhanced object tracking	Configuring Enhanced Object Tracking module

Standards

Standard	Title
No new or modified standards are supported, and support for existing standards has not been modified.	--

MIBs

MIB	MIBs Link
CISCO-EMBEDDED-EVENT-MGR-MIB	To locate and download MIBs for selected platforms, Cisco IOS releases, and feature sets, use Cisco MIB Locator found at the following URL: http://www.cisco.com/go/mibs

RFCs

RFC	Title
No new or modified RFCs are supported, and support for existing RFCs has not been modified.	--

Technical Assistance

Description	Link
<p>The Cisco Support website provides extensive online resources, including documentation and tools for troubleshooting and resolving technical issues with Cisco products and technologies.</p> <p>To receive security and technical information about your products, you can subscribe to various services, such as the Product Alert Tool (accessed from Field Notices), the Cisco Technical Services Newsletter, and Really Simple Syndication (RSS) Feeds.</p> <p>Access to most tools on the Cisco Support website requires a Cisco.com user ID and password.</p>	<p>http://www.cisco.com/cisco/web/support/index.html</p>

Feature Information for Writing EEM Policies Using the Cisco IOS CLI

The following table provides release information about the feature or features described in this module. This table lists only the software release that introduced support for a given feature in a given software release train. Unless noted otherwise, subsequent releases of that software release train also support that feature.

Use Cisco Feature Navigator to find information about platform support and Cisco software image support. To access Cisco Feature Navigator, go to www.cisco.com/go/cfn. An account on Cisco.com is not required.

Table 7 **Feature Information for Writing EEM Policies Using the Cisco IOS CLI**

Feature Name	Releases	Feature Information
Embedded Event Manager 1.0	12.0(26)S 12.3(4)T	<p>EEM 1.0 introduced Embedded Event Manager applet creation with the SNMP and syslog event detectors. EEM 1.0 also introduced the following actions: generating prioritized syslog messages, generating a CNS event for upstream processing by Cisco CNS devices, reloading the Cisco IOS software, and switching to a secondary processor in a fully redundant hardware configuration.</p> <p>The following commands were introduced by this feature: action cns-event, action force-switchover, action reload, action syslog, debug event manager, event manager applet, event snmp, event syslog, show event manager policy registered.</p>

Feature Name	Releases	Feature Information
Embedded Event Manager 2.0	12.2(25)S	<p>EEM 2.0 introduced the application-specific event detector, the counter event detector, the interface counter event detector, the timer event detector, and the watchdog event detector. New actions included modifying a named counter, publishing an application-specific event, and generating an SNMP trap. The ability to define environment variables and to run EEM policies written using Tcl was introduced, and two sample policies were included with the software.</p> <p>The following commands were introduced by this feature: action counter, action publish-event, action snmp-trap, event application, event counter, event interface, event ioswdsysmon, event manager environment, event manager history size, event manager policy, event manager scheduler suspend, event timer, show event manager environment, show event manager history events, show event manager history traps, show event manager policy available, show event manager policy pending.</p>

Feature Name	Releases	Feature Information
Embedded Event Manager 2.1	12.3(14)T 12.2(18)SXF5 12.2(28)SB 12.2(33)SRA	<p>EEM 2.1 introduced some new event detectors and actions with new functionality to allow EEM policies to be run manually and the ability to run multiple concurrent policies. Support for Simple Network Management Protocol (SNMP) event detector rate-based events was provided as was the ability to create policies using Tool Command Language (Tcl).</p> <p>The following commands were introduced or modified by this feature: action cli, action counter, action info, action mail, action policy, debug event manager, event cli, event manager directory user, event manager policy, event manager run, event manager scheduler script, event manager session cli username, event none, event oir, event snmp, event syslog, set(EEM), show event manager directory user, show event manager policy registered, show event manager session cli username.</p>

Feature Name	Releases	Feature Information
Embedded Event Manager 2.1 (Software Modularity)	12.2(18)SXF4Cisco IOS Software Modularity images	<p>EEM 2.1 for Software Modularity images introduced the GOLD, system manager, and WDSysMon (Cisco IOS Software Modularity watchdog) event detectors, and the ability to display Cisco IOS Software Modularity processes and process metrics.</p> <p>The following commands were introduced by this feature: event gold, event process, show event manager metric process.</p> <p>Note EEM 2.1 for Software Modularity images also supports the resource and RF event detectors introduced in EEM 2.2, but it does not support the enhanced object tracking event detector or the actions to read and set tracked objects.</p>
Embedded Event Manager 2.2	12.4(2)T 12.2(31)SB3 12.2(33)SRB	<p>EEM 2.2 introduced the enhanced object tracking, resource, and RF event detectors. The actions of reading and setting the state of a tracked object were also introduced.</p> <p>The following commands were introduced or modified by this feature: action track read, action track set, default-state, event resource, event rf, event track, show track, track stub-object.</p>
SNMP event detector delta environment variable	12.4(11)T	<p>A new SNMP event detector environment variable, <code>_snmp_oid_delta_val</code>, was introduced.</p> <p>This is a minor enhancement. Minor enhancements are not typically listed in Feature Navigator.</p>

Feature Name	Releases	Feature Information
Embedded Event Manager 2.3	12.2(33)SXH 12.2(33)SB	<p>EEM 2.3 introduced some new features relative to the Generic Online Diagnostics (GOLD) Event Detector on the Cisco Catalyst 6500 Series switches.</p> <p>The event gold command was enhanced in addition to the Tcl keywords--action-notify, testing-type, test-name, test-id, consecutive-failure, platform-action, and maxrun--for improved reaction to GOLD test failures and conditions</p> <p>Read-only variables were added under the GOLD Event Detector category to provide access to platform-wide and test-specific GOLD event detector information for a detected event.</p>
Embedded Event Manager 2.4	12.4(20)T 12.2(33)SXI 12.2(33)SRE	<p>EEM 2.4 is supported in Cisco IOS Release 12.4(20)T and later releases, and introduced several new features.</p> <p>The following commands were introduced by this feature:</p> <p>attribute (EEM) , correlate, event manager detector rpc, event manager directory user repository, event manager update user policy, event manager scheduler clear, event manager update user policy, event owner, event rpc, event snmp-notification, show event manager detector, show event manager version, trigger (EEM).</p>

Feature Name	Releases	Feature Information
Embedded Event Manger 3.0	12.4(22)T 12.2(33)SRE 12.2(50)SY	<p>EEM 3.0 is supported in Cisco IOS Release 12.4(22)T and later releases, and introduced several new features.</p> <p>The following commands were introduced or modified by this feature:</p> <p>action add , action append, action break, action comment, action context retrieve, action context save, action continue, action decrement, action divide, action else, action elseif, action end, action exit, action foreach, action gets, action if, action if goto, action increment, action info type interface-names, action info type snmp getid, action info type snmp inform, action info type snmp oid, action info type snmp trap, action info type snmp var, action multiply, action puts, action regexp, action set (EEM), action string compare, action string equal, action string first, action string index, action string last, action string length, action string match, action string range, action string replace, action string tolower, action string toupper, action string trim, action string trimleft, action string trimright, action subtract, action while, event cli, event ipsla, event manager detector routing, event manager scheduler, event manager scheduler clear, event manager scheduler hold, event manager scheduler modify, event manager scheduler release, event nf, event routing, show event manager policy active, show event manager policy pending, and show event manager scheduler.</p>

Cisco and the Cisco Logo are trademarks of Cisco Systems, Inc. and/or its affiliates in the U.S. and other countries. A listing of Cisco's trademarks can be found at www.cisco.com/go/trademarks. Third party trademarks mentioned are the property of their respective owners. The use of the word partner does not imply a partnership relationship between Cisco and any other company. (1005R)

Any Internet Protocol (IP) addresses and phone numbers used in this document are not intended to be actual addresses and phone numbers. Any examples, command display output, network topology diagrams, and other figures included in the document are shown for illustrative purposes only. Any use of actual IP addresses or phone numbers in illustrative content is unintentional and coincidental.