



## Configuring EIGRP

---

**Last Updated: April 21, 2011**

Enhanced Interior Gateway Routing Protocol (EIGRP) is an enhanced version of the Interior Gateway Routing Protocol (IGRP) developed by Cisco. The convergence properties and the operating efficiency of EIGRP have improved substantially over IGRP, and IGRP is now obsolete.

The convergence technology is based on research conducted at SRI International and employs an algorithm referred to as the Diffusing Update Algorithm (DUAL). This algorithm guarantees loop-free operation at every instant throughout a route computation and allows all devices involved in a topology change to synchronize at the same time. Routers that are not affected by topology changes are not involved in recomputations.

- [Finding Feature Information, page 1](#)
- [Information About EIGRP, page 2](#)
- [How to Configure EIGRP, page 17](#)
- [Configuration Examples for EIGRP, page 58](#)
- [Additional References, page 68](#)
- [Feature Information for EIGRP, page 69](#)
- [, page 74](#)

## Finding Feature Information

Your software release may not support all the features documented in this module. For the latest feature information and caveats, see the release notes for your platform and software release. To find information about the features documented in this module, and to see a list of the releases in which each feature is supported, see the Feature Information Table at the end of this document.

Use Cisco Feature Navigator to find information about platform support and Cisco software image support. To access Cisco Feature Navigator, go to [www.cisco.com/go/cfn](http://www.cisco.com/go/cfn). An account on Cisco.com is not required.

## Information About EIGRP

- [EIGRP Features, page 2](#)
- [EIGRP Autonomous System Configuration, page 2](#)
- [EIGRP Named Configuration, page 3](#)
- [EIGRP IPv6 VRF-Lite, page 3](#)
- [EIGRP Neighbor Relationship Maintenance, page 3](#)
- [DUAL Finite State Machine, page 5](#)
- [Protocol-Dependent Modules, page 5](#)
- [EIGRP Metric Weights, page 5](#)
- [Goodbye Message, page 6](#)
- [Routing Metric Offset Lists, page 7](#)
- [EIGRP Cost Metrics, page 7](#)
- [Route Summarization, page 9](#)
- [Summary Aggregate Addresses, page 9](#)
- [Floating Summary Routes, page 9](#)
- [EIGRP Route Authentication, page 11](#)
- [Hello Packets and the Hold-Time Intervals, page 12](#)
- [Split Horizon, page 12](#)
- [Link Bandwidth Percentage, page 12](#)
- [EIGRP Stub Routing, page 13](#)
- [EIGRP Stub Routing Leak Map Support, page 16](#)

## EIGRP Features

- **Increased network width**--With IP Routing Information Protocol (RIP), the largest possible width of your network is 15 hops. When EIGRP is enabled, the largest possible width is increased to 255 hops, and the EIGRP metric is large enough to support thousands of hops. The default maximum number of EIGRP hops is 100.
- **Fast convergence**--The DUAL algorithm allows routing information to converge quickly.
- **Partial updates**--EIGRP sends incremental updates when the state of a destination changes, instead of sending the entire contents of the routing table. This feature minimizes the bandwidth required for EIGRP packets.
- **Neighbor discovery mechanism**--This is a simple hello mechanism used to learn about neighboring routers. It is protocol-independent.
- **Variable-length subnet masks (VLSMs).**
- **Arbitrary route summarization.**
- **Scaling**--EIGRP scales to large networks.

## EIGRP Autonomous System Configuration

Configuring the **router eigrp** command with the *autonomous-system-number* argument creates an EIGRP configuration referred to as an autonomous system configuration. EIGRP autonomous system configuration creates an EIGRP routing instance that can be used for exchanging routing information.

In EIGRP autonomous system configuration, EIGRP VPNs can be configured only under IPv4 address family configuration mode. A virtual routing and forwarding (VRF) instance and route distinguisher must be defined before the address family session can be created.

It is recommended that you configure an autonomous system number when the address family is configured, either by entering the *autonomous-system-number* argument with the **address-family** command or separately using the **autonomous-system** command.

## EIGRP Named Configuration

Configuring the **router eigrp** command with the *virtual-instance-name* argument creates an EIGRP configuration referred to as an EIGRP named configuration. An EIGRP named configuration does not create an EIGRP routing instance by itself. EIGRP named configuration is a base configuration that is required to define address family configurations that are used for routing.

In EIGRP named configuration, EIGRP VPNs can be configured in IPv4 and IPv6 named configurations. A VRF instance and a route distinguisher may or may not be used to create the address family.



### Note

---

The EIGRP IPv6 VRF-Lite feature is available only in EIGRP named configurations.

---

EIGRP VPNs can be configured under EIGRP named configurations. A VRF and route distinguisher must be defined before the address-family session can be created.

A single EIGRP routing process can support multiple VRFs. The number of VRFs that can be configured is limited only by the available system resources on the router, which is determined by the number of VRFs, running processes, and available memory. However, only a single VRF can be supported by each VPN, and redistribution between different VRFs is not supported.

## EIGRP IPv6 VRF-Lite

The EIGRP IPv6 VRF-Lite feature provides EIGRP IPv6 support for multiple VRFs. EIGRP for IPv6 can operate in the context of a VRF. The EIGRP IPv6 VRF-Lite feature provides separation between routing and forwarding, providing an additional level of security because no communication between devices belonging to different VRFs is allowed unless it is explicitly configured. The EIGRP IPv6 VRF-Lite feature simplifies the management and troubleshooting of traffic belonging to a specific VRF.

The EIGRP IPv6 VRF-Lite feature is available only in EIGRP named configurations.

## EIGRP Neighbor Relationship Maintenance

Neighbor relationship maintenance is the process that routers use to dynamically learn of other routers on their directly attached networks. Routers must also discover when their neighbors become unreachable or inoperative. Neighbor relationship maintenance is achieved with low overhead by routers periodically sending small hello packets. As long as hello packets are received, the Cisco IOS software can determine that a neighbor is alive and functioning. When this status is determined, the neighboring routers can exchange routing information.

The reliable transport protocol is responsible for guaranteed, ordered delivery of EIGRP packets to all neighbors. It supports intermixed transmission of multicast and unicast packets. Some EIGRP packets must be sent reliably, while others need not be. For efficiency, reliability is provided only when necessary. For example, on a multiaccess network that has multicast capabilities (such as Ethernet) it is not necessary to send hello packets reliably to all neighbors individually. Therefore, EIGRP sends a single multicast hello with an indication in the packet informing the receivers that the packet need not be acknowledged. Other

types of packets (such as updates) require acknowledgment, which is indicated in the packet. The reliable transport has a provision to send multicast packets quickly when unacknowledged packets are pending. This provision helps to ensure that convergence time remains low in the presence of varying speed links.

- [Neighbor Authentication, page 4](#)

## Neighbor Authentication

The authentication to packets being sent between neighbors ensures that a router accepts packets only from other routers that have the same preshared key. Without this authentication configured you can purposely or accidentally add another router to the network, or send packets with different or conflicting route information on to the network, resulting in topology corruption and denial of service.

EIGRP authentication is configurable on a per-interface basis. Packets exchanged between neighbors connected through an interface are authenticated. Message digest algorithm 5 (MD5) authentication is supported to prevent the introduction of unauthorized information from unapproved sources. MD5 authentication is defined in [RFC 1321](#). The Hash-based Message Authentication Code (HMAC)-Secure Hash Algorithms (SHA)-256 authentication method is also supported. When you are using the HMAC-SHA-256 authentication method, a shared secret key is configured in all routers attached to a common network. For each packet, the key is used to generate and verify a message digest that gets added to the packet. The message digest is a one-way function of the packet and the secret key. For more information on HMAC-SHA-256 authentication see *FIPS PUB 180-2, SECURE HASH STANDARD (SHS)* for the SHA-256 algorithm, and RFC 2104 for the HMAC algorithm.

If HMAC-SHA-256 authentication is set, the EIGRP packets will be authenticated using HMAC-SHA-256 message authentication codes. The HMAC algorithm takes as inputs the data to authenticate (that is, the EIGRP packet) and a shared secret key that is known to both the sender and the receiver, and outputs a 256-bit hash that is used for authentication. If the hash value provided by the sender matches the hash value calculated by the receiver, the packet is accepted by the receiver; otherwise it is discarded.

Typically, the shared secret key is configured to be identical between the sender and the receiver. To protect against packet replay attacks with a spoofed source address, the shared secret key to be used for a packet is defined as the concatenation of the user-configured shared secret (identical across all routers participating in the authenticated domain) with the IPv4 or IPv6 address (which is unique for each router) from which this particular packet is sent.

The router sending a packet calculates the hash to be sent based on:

- key part 1--the configured shared secret.
- key part 2--the local interface address from which the packet will be sent.
- data--the EIGRP packet to be sent (prior to addition of the IP header).

The router receiving the packet calculates the hash for verification based on:

- key part 1--the configured shared secret.
- key part 2--the IPv4 or IPv6 source address in the IPv4 or IPv6 packet header.
- data--the EIGRP packet received (after removing the IP header).

Therefore, for successful authentication on receipt, all of the following must be true:

- The sender and receiver must have the same shared secret.
- The source address chosen by the sender must match the source address in the IP header that the receiver receives.
- The EIGRP packet data that the sender transmitted must match the EIGRP packet data that the receiver receives.

Authentication cannot succeed if:

- The sender does not know the shared secret expected by the receiver.
- The IP source address in the IP header is modified in transit.
- Any of the EIGRP packet data is modified in transit.

## DUAL Finite State Machine

The DUAL finite state machine embodies the decision process for all route computations. It tracks all routes advertised by all neighbors. DUAL uses the distance information (known as a metric) to select efficient, loop-free paths. DUAL selects routes to be inserted into a routing table based on feasible successors. A successor is a neighboring router used for packet forwarding that has a least-cost path to a destination that is guaranteed not to be part of a routing loop. When there are no feasible successors but there are neighbors advertising the destination, a recomputation must occur. This process determines a new successor. The amount of time required to recompute the route affects the convergence time. Recomputation is processor-intensive; it is advantageous to avoid unneeded recomputation. When a topology change occurs, DUAL will test for feasible successors. If there are feasible successors, DUAL will use any feasible successors it finds in order to avoid unnecessary recomputation.

## Protocol-Dependent Modules

The protocol-dependent modules are responsible for network-layer protocol-specific tasks. An example is the EIGRP module, which is responsible for sending and receiving EIGRP packets that are encapsulated in IP. It is also responsible for parsing EIGRP packets and informing DUAL about the new information received. EIGRP asks DUAL to make routing decisions, but the results are stored in the IP routing table. Also, EIGRP is responsible for redistributing routes learned by other IP routing protocols.

## EIGRP Metric Weights

EIGRP uses the minimum bandwidth on the path to a destination network and the total delay to compute routing metrics. You can use the **metric weights(EIGRP)** command to adjust the default behavior of EIGRP routing and metric computations. For example, this adjustment allows you to tune the system behavior to allow for satellite transmission. EIGRP metric defaults have been carefully selected to provide optimal performance in most networks.



### Note

Adjusting EIGRP metric weights can dramatically affect network performance. Because of the complexity of this task, we recommend that you do not change the default values without guidance from an experienced network designer.

By default, the EIGRP composite metric is a 32-bit quantity that is a sum of the segment delays and the lowest segment bandwidth (scaled and inverted) for a given route. The formula used to scale and invert the bandwidth value is  $10^7/\text{minimum Bw in kilobits per second}$ .

For a network of homogeneous media, this metric reduces to a hop count. For a network of mixed media (FDDI, Gigabit Ethernet, and serial lines running from 9600 bits per second to T1 rates), the route with the lowest metric reflects the most desirable path to a destination.

- [Mismatched K Values, page 6](#)

## Mismatched K Values

EIGRP K values are the metrics that EIGRP uses to calculate routes. Mismatched K values (EIGRP metrics) can prevent neighbor relationships from being established and can negatively impact network convergence. The following example explains this behavior between two EIGRP peers (ROUTER-A and ROUTER-B).

The following configuration is applied to ROUTER-A. The K values are changed with the **metric weights** command. A value of 2 is entered for the *k1* argument to adjust the bandwidth calculation. The value of 1 is entered for the *k3* argument to adjust the delay calculation.

```
Router(config)# hostname Router-A
Router-A(config)# interface serial 0
Router-A(config-if)# ip address 10.1.1.1 255.255.255.0
Router-A(config-if)# exit
Router-A(config)# router eigrp virtual-name1
Router-A(config-router)# address-family ipv4 autonomous-system 4533
Router-A(config-router-af)# network 10.1.1.0 0.0.0.255
Router-A(config-router-af)# metric weights 0 2 0 1 0 0
```

The following configuration is applied to ROUTER-B. However, the **metric weights** command is not applied and the default K values are used. The default K values are 1, 0, 1, 0, and 0.

```
Router(config)# hostname Router-B
Router-B(config)# interface serial 0
Router-B(config-if)# ip address 10.1.1.2 255.255.255.0
Router-B(config-if)# exit
Router-B(config)# router eigrp virtual-name1
Router-B(config-router)# address-family ipv4 autonomous-system 4533
Router-B(config-router-af)# network 10.1.1.0 0.0.0.255
```

The bandwidth calculation is set to 2 on ROUTER-A and set to 1 (by default) on ROUTER-B. This configuration prevents these peers from forming a neighbor relationship.

The following error message is displayed in the console of ROUTER-B because the K values are mismatched:

```
*Apr 26 13:48:41.811: %DUAL-5-NBRCHANGE: IP-EIGRP(0) 1: Neighbor 10.1.1.1 (Ethernet0/0)
is down: K-value mismatch
```

There are two scenarios where this error message can be displayed:

- The two routers are connected on the same link and configured to establish a neighbor relationship. However, each router is configured with different K values.
- The K-value mismatch error message can also be displayed if one of the two peers has transmitted a “goodbye” message, and the receiving router does not support this message. In this case, the receiving router will interpret this message as a K-value mismatch.

## Goodbye Message

The goodbye message is a feature designed to improve EIGRP network convergence. The goodbye message is broadcast when an EIGRP routing process is shut down to inform adjacent peers about the impending topology change. This feature allows supporting EIGRP peers to synchronize and recalculate neighbor relationships more efficiently than would occur if the peers discovered the topology change after the hold timer expired.

The following message is displayed by routers that run a supported release when a goodbye message is received:

```
*Apr 26 13:48:42.523: %DUAL-5-NBRCHANGE: IP-EIGRP(0) 1: Neighbor 10.1.1.1
(Ethernet0/0) is down: Interface Goodbye received
```

A Cisco router that runs a software release that does not support the goodbye message can misinterpret the message as a K-value mismatch and display the following message:

```
*Apr 26 13:48:41.811: %DUAL-5-NBRCHANGE: IP-EIGRP(0) 1: Neighbor 10.1.1.1
(Ethernet0/0) is down: K-value mismatch
```



**Note**

The receipt of a goodbye message by a nonsupporting peer does not disrupt normal network operation. The nonsupporting peer will terminate the session when the hold timer expires. The sending and receiving routers will reconverge normally after the sender reloads.

## Routing Metric Offset Lists

An offset list is the mechanism for increasing incoming and outgoing metrics to routes learned via EIGRP. An offset list provides a local mechanism for increasing the value of routing metrics. Optionally, you can limit the offset list with either an access list or an interface.



**Note**

Offset lists are available only in IPv4 configurations. IPv6 configurations do not support offset lists.

## EIGRP Cost Metrics

EIGRP receives dynamic raw radio link characteristics and computes a composite EIGRP cost metric based on a proprietary formula. To avoid churn in the network as a result of the change in the link characteristics, a tunable dampening mechanism is used.

EIGRP uses the metric weights along with a set of vector metrics to compute the composite metric for local RIB installation and route selections. The EIGRP composite metric is calculated using the formula:

$$\text{EIGRP Metric} = 256 * ((K1 * Bw) + (K2 * Bw) / (256 - \text{Load}) + (K3 * \text{Delay}) * (K5 / (\text{Reliability} + K4)))$$

The table below lists the EIGRP vector metrics and their descriptions.

**Table 1: EIGRP Vector Metrics**

Vector Metric	Description
bandwidth	Minimum bandwidth of the route in kilobits per second. It can be 0 or any positive integer. The bandwidth for the formula is scaled and inverted by the following formula:  (10 <sup>7</sup> /minimum Bw in kilobits per second)
delay	Route delay in tens of microseconds.

Vector Metric	Description
delay reliability	Likelihood of successful packet transmission expressed as a number between 0 and 255. The value 255 means 100 percent reliability; 0 means no reliability.
load	Effective load of the route expressed as a number from 0 to 255 (255 is 100 percent loading).
mtu	Minimum maximum transmission unit (MTU) size of the route in bytes. It can be 0 or any positive integer.

EIGRP monitors metric weights on an interface to allow for the tuning of EIGRP metric calculations and indicate type of service (ToS). The table below lists the K values and their default.

**Table 2: EIGRP K-Value Defaults**

Setting	Default Value
K1	1
K2	0
K3	1
K4	0
K5	0

Most configurations use the delay and bandwidth metrics, with bandwidth taking precedence. The default formula of  $256 * (Bw + Delay)$  is the EIGRP metric. The bandwidth for the formula is scaled and inverted by the following formula:

$(10^7 / \text{minimum Bw in kilobits per second})$



**Note**

You can change the weights, but these weights must be the same on all the routers.

For example, look at a link whose bandwidth to a particular destination is 128k and the delay is 84,000 microseconds.

Using the cut-down formula, the EIGRP metric calculation would simplify to  $256 * (Bw + Delay)$ , resulting in the following value:

$$\text{Metric} = 256 * (10^7 / 128 + 84000 / 10) = 256 * 86525 = 22150400$$

To calculate route delay, divide the delay value by 10 to get the true value in tenths of microseconds.

When EIGRP calculates the delay for Mobile Ad Hoc Networks (MANET) and the delay is obtained from a router interface, the delay is always calculated in tens of microseconds. In most cases, when using MANET, you will not use the interface delay, but rather the delay that is advertised by the radio. The delay you will receive from the radio is in microseconds, so you must adjust the cut-down formula as follows:

$$\text{Metric} = (256 * (10^7 / 128)) + (84000 * 256) / 10 = 20000000 + 2150400 = 22150400$$



## Route Summarization

You can configure EIGRP to perform automatic summarization of subnet routes into network-level routes. For example, you can configure subnet 172.16.1.0 to be advertised as 172.16.0.0 over interfaces that have subnets of 192.168.7.0 configured. Automatic summarization is performed when two or more **network** (EIGRP) router configuration or address family configuration commands are configured for the EIGRP process. By default, this feature is enabled.

Route summarization works in conjunction with the **ip summary-address eigrp** command available in interface configuration mode for autonomous system configurations and with the **summary-address** (EIGRP) command for named configurations in which additional summarization can be performed. If automatic summarization is in effect, there usually is no need to configure network-level summaries using the **ip summary-address eigrp** command.

## Summary Aggregate Addresses

You can configure a summary aggregate address for a specified interface. If any more specific routes are in the routing table, EIGRP will advertise the summary address out the interface with a metric equal to the minimum of all more specific routes.

## Floating Summary Routes

You can use a floating summary route when configuring the **ip summary-address eigrp** command for autonomous system configurations or the **summary-address** (EIGRP) command for named configurations. The floating summary route is created by applying a default route and administrative distance at the interface level, or address family interface level. The following scenarios illustrate the behavior of floating summary routes.

The figure below shows a network with three routers, Router-A, Router-B, and Router-C. Router-A learns a default route from elsewhere in the network and then advertises this route to Router-B. Router-B is configured so that only a default summary route is advertised to Router-C. The default summary route is applied to serial interface 0/1 on Router-B with the following configuration for an autonomous system configuration:

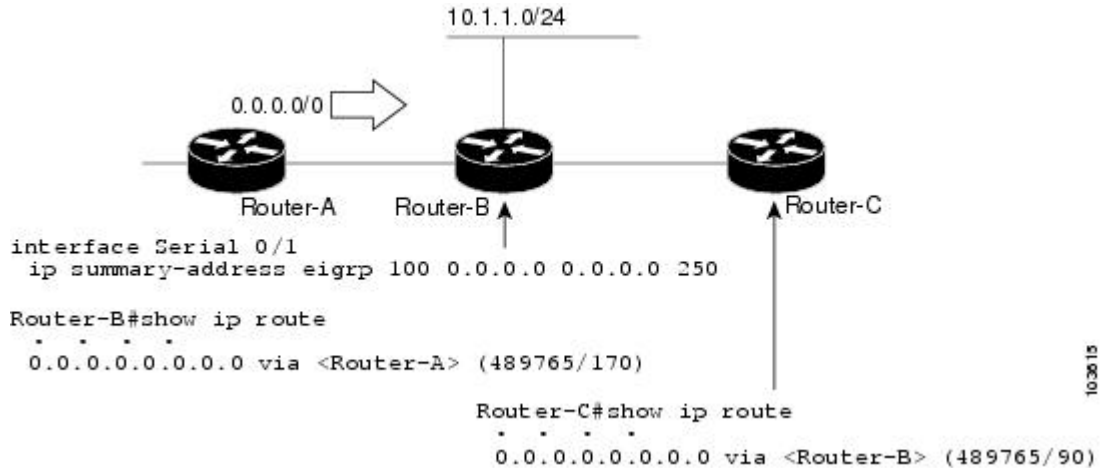
```
Router(config)# interface Serial 0/1
```

```
Router(config-if)# ip summary-address eigrp 100 0.0.0.0 0.0.0.0
```

The default summary route is applied to serial interface 0/1 on Router-B with the following configuration for a named configuration:

```
Router(config-router-af)# af-interface serial0/1
Router(config-router-af-interface)# summary-address 192.168.0.0 255.255.0.0 95
```

**Figure 1: Floating Summary Route Applied to Router-B**



The configuration of the default summary route on Router-B sends a 0.0.0.0/0 summary route to Router-C and blocks all other routes, including the 10.1.1.0/24 route, from being advertised to Router-C. However, this configuration also generates a local discard route on Router-B, a route for 0.0.0.0/0 to the null 0 interface with an administrative distance of 5. When this route is created, it overrides the EIGRP learned default route. Router-B will no longer be able to reach destinations that it would normally reach through the 0.0.0.0/0 route.

This problem is resolved by applying a floating summary route to the interface on Router-B that connects to Router-C. The floating summary route is applied by configuring an administrative distance for the default summary route on the interface of Router-B with the following statement for an autonomous system configuration:

```
Router(config-if)# ip summary-address eigrp 100 0.0.0.0 0.0.0.0 250
```

The floating summary route is applied by configuring an administrative distance for the default summary route on the interface of Router-B with the following statement for a named configuration:

```
Router(config-router-af-interface)# summary-address eigrp 100 0.0.0.0 0.0.0.0 250
```

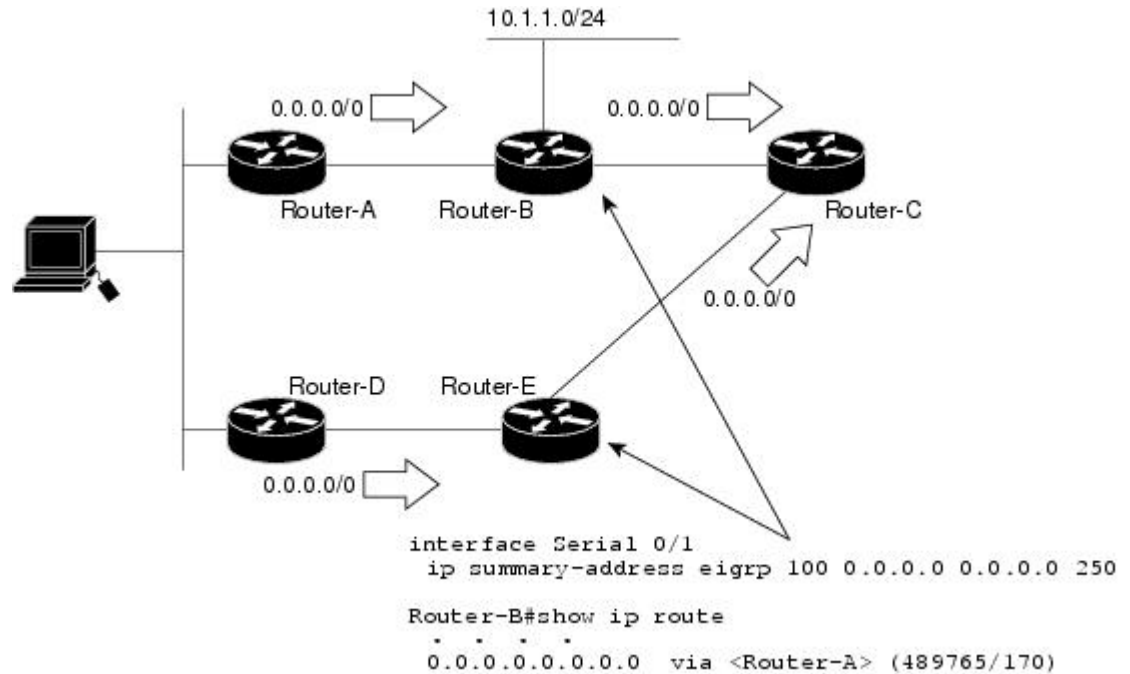
The administrative distance of 250, applied in the **summary-address** command, is now assigned to the discard route generated on Router-B. The 0.0.0.0/0, from Router-A, is learned through EIGRP and installed in the local routing table. Routing to Router-C is restored.

If Router-A loses the connection to Router-B, Router-B will continue to advertise a default route to Router-C, which allows traffic to continue to reach destinations attached to Router-B. However, traffic destined to networks to Router-A or behind Router-A will be dropped when it reaches Router-B.

The figure below shows a network with two connections from the core, Router-A and Router-D. Both Router-B and Router-E have floating summary routes configured on the interfaces connected to Router-C.

If the connection between Router-E and Router-C fails, the network will continue to operate normally. All traffic will flow from Router-C through Router-B to the hosts attached to Router-A and Router-D.

**Figure 2: Floating Summary Route Applied for Dual-Homed Remotes**



However, if the link between Router-A and Router-B fails, the network may incorrectly direct traffic because Router-B will continue to advertise the default route (0.0.0.0/0) to Router-C. In this scenario, Router-C still forwards traffic to Router-B, but Router-B drops the traffic. To avoid this problem, you should configure the summary address with an administrative distance on only single-homed remote routers or areas where there is only one exit point between two segments of the network. If two or more exit points exist (from one segment of the network to another), configuring the floating default route can cause a black hole to be formed.

## EIGRP Route Authentication

EIGRP route authentication provides MD5 authentication of routing updates from the EIGRP routing protocol. The MD5 keyed digest in each EIGRP packet prevents the introduction of unauthorized or false routing messages from unapproved sources.

Each key has its own key identifier (specified with the **key number** key chain configuration command), which is stored locally. The combination of the key identifier and the interface associated with the message uniquely identifies the authentication algorithm and MD5 authentication key in use.

You can configure multiple keys with lifetimes. Only one authentication packet is sent, regardless of how many valid keys exist. The software examines the key numbers in the order from lowest to highest, and uses the first valid key it encounters. Note that the router needs to know the time to configure keys with lifetimes. Refer to the Network Time Protocol (NTP) and calendar commands in the Performing Basic System Management module of the *Cisco IOS Network Management Configuration Guide*.

For autonomous system and named configuration examples of route authentication, see the [Example EIGRP Route Authentication--Autonomous System Configuration](#), page 62 and the [Example EIGRP Route Authentication--Named Configuration](#), page 63.

## Hello Packets and the Hold-Time Intervals

You can adjust the interval between hello packets and the hold time. Hello packets and hold-time intervals are protocol-independent parameters that work for IP and Internetwork Packet Exchange (IPX).

Routing devices periodically send hello packets to each other to dynamically learn of other routers on their directly attached networks. This information is used to discover neighbors and to learn when neighbors become unreachable or inoperative.

By default, hello packets are sent every 5 seconds. The exception is on low-speed, nonbroadcast multiaccess (NBMA) media, where the default hello interval is 60 seconds. Low speed is considered to be a rate of T1 or slower, as specified with the **bandwidth** interface configuration command. The default hello interval remains 5 seconds for high-speed NBMA networks. Note that for the purposes of EIGRP, Frame Relay and Switched Multimegabit Data Service (SMDS) networks may or may not be considered to be NBMA. These networks are considered NBMA only if the interface has not been configured to use physical multicasting.

You can configure the hold time on a specified interface for a particular EIGRP routing process designated by the autonomous system number. The hold time is advertised in hello packets and indicates to neighbors the length of time they should consider the sender valid. The default hold time is three times the hello interval, or 15 seconds. For slow-speed NBMA networks, the default hold time is 180 seconds.

On very congested and large networks, the default hold time might not be sufficient for all routers to receive hello packets from their neighbors. In this case, you may want to increase the hold time.

**Note**

---

Do not adjust the hold time without advising your technical support personnel.

---

## Split Horizon

Split horizon controls the sending of EIGRP update and query packets. Split horizon is a protocol-independent parameter that works for IP and IPX. When split horizon is enabled on an interface, update and query packets are not sent for destinations for which this interface is the next hop. Controlling update and query packets in this manner reduces the possibility of routing loops.

By default, split horizon is enabled on all interfaces.

Split horizon blocks route information from being advertised by a router out of any interface from which that information originated. This behavior usually optimizes communications among multiple routing devices, particularly when links are broken. However, with nonbroadcast networks (such as Frame Relay and SMDS), situations can arise for which this behavior is less than ideal. For these situations, including networks in which you have EIGRP configured, you may want to disable split horizon.

## Link Bandwidth Percentage

By default, EIGRP packets consume a maximum of 50 percent of the link bandwidth, as configured with the **bandwidth** interface configuration command for autonomous system configurations, and with the **bandwidth-percent** command for named configurations. You might want to change that value if a different level of link utilization is required or if the configured bandwidth does not match the actual link bandwidth (it may have been configured to influence route metric calculations). This is a protocol-independent parameter that works for IP and IPX.

## EIGRP Stub Routing

The EIGRP Stub Routing feature improves network stability, reduces resource utilization, and simplifies stub router configuration.

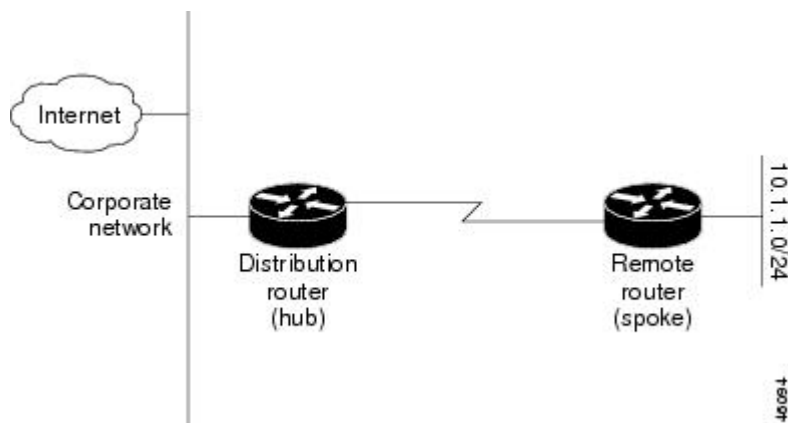
Stub routing is commonly used in a hub-and-spoke network topology. In a hub-and-spoke network, one or more end (stub) networks are connected to a remote router (the spoke) that is connected to one or more distribution routers (the hub). The remote router is adjacent only to one or more distribution routers. The only route for IP traffic to follow into the remote router is through a distribution router. This type of configuration is commonly used in WAN topologies where the distribution router is directly connected to a WAN. The distribution router can be connected to many more remote routers. Often, the distribution router will be connected to many remote routers. In a hub-and-spoke topology, the remote router must forward all nonlocal traffic to a distribution router, so it becomes unnecessary for the remote router to hold a complete routing table. Generally, the distribution router need not send anything more than a default route to the remote router.

When using the EIGRP Stub Routing feature, you need to configure the distribution and remote routers to use EIGRP, and to configure only the remote router as a stub. Only specified routes are propagated from the remote (stub) router. The stub router responds to all queries for summaries, connected routes, redistributed static routes, external routes, and internal routes with the message “inaccessible.” A router that is configured as a stub will send a special peer information packet to all neighboring routers to report its status as a stub router.

Any neighbor that receives a packet informing it of the stub status will not query the stub router for any routes, and a router that has a stub peer will not query that peer. The stub router will depend on the distribution router to send the proper updates to all peers.

The figure below shows a simple hub-and-spoke configuration.

**Figure 3: Simple Hub-and-Spoke Network**



The stub routing feature by itself does not prevent routes from being advertised to the remote router. In the example in the figure above, the remote router can access the corporate network and the Internet only through the distribution router. Having a complete route table on the remote router, in this example, would serve no functional purpose because the path to the corporate network and the Internet would always be through the distribution router. The larger route table would only reduce the amount of memory required by the remote router. Bandwidth and memory can be conserved by summarizing and filtering routes in the distribution router. The remote router need not receive routes that have been learned from other networks because the remote router must send all nonlocal traffic, regardless of destination, to the distribution router. If a true stub network is desired, the distribution router should be configured to send only a default route to

the remote router. The EIGRP Stub Routing feature does not automatically enable summarization on the distribution router. In most cases, the network administrator will need to configure summarization on the distribution routers.

**Note**

When configuring the distribution router to send only a default route to the remote router, you must use the **ip classless** command on the remote router. By default, the **ip classless** command is enabled in all Cisco IOS images that support the EIGRP Stub Routing feature.

Without the EIGRP Stub Routing feature, even after the routes that are sent from the distribution router to the remote router have been filtered or summarized, a problem might occur. If a route is lost somewhere in the corporate network, EIGRP could send a query to the distribution router, which in turn would send a query to the remote router even if routes are being summarized. If there is a problem communicating over the WAN link between the distribution router and the remote router, an EIGRP stuck in active (SIA) condition could occur and cause instability elsewhere in the network. The EIGRP Stub Routing feature allows a network administrator to prevent queries from being sent to the remote router.

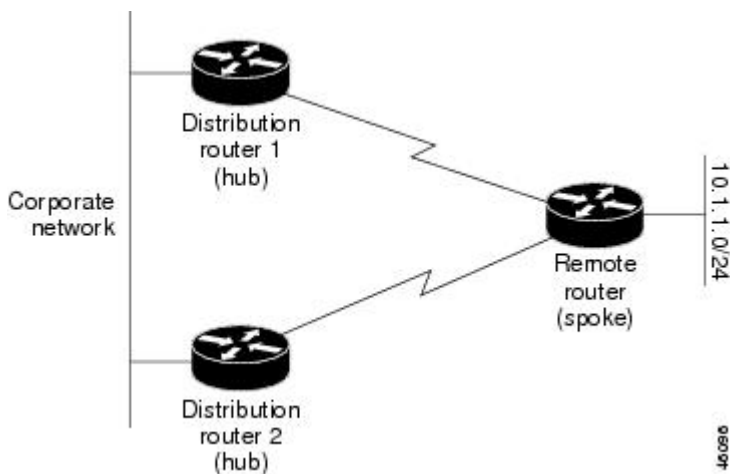
- [Dual-Homed Remote Topology, page 14](#)

## Dual-Homed Remote Topology

In addition to a simple hub-and-spoke network where a remote router is connected to a single distribution router, the remote router can be dual-homed to two or more distribution routers. This configuration adds redundancy and introduces unique issues, and the stub feature helps to address some of these issues.

A dual-homed remote router will have two or more distribution (hub) routers. However, the principles of stub routing are the same as they are with a hub-and-spoke topology. The figure below shows a common dual-homed remote topology with one remote router, but 100 or more routers could be connected on the same interfaces on distribution router 1 and distribution router 2. The remote router will use the best route to reach its destination. If distribution router 1 experiences a failure, the remote router can still use distribution router 2 to reach the corporate network.

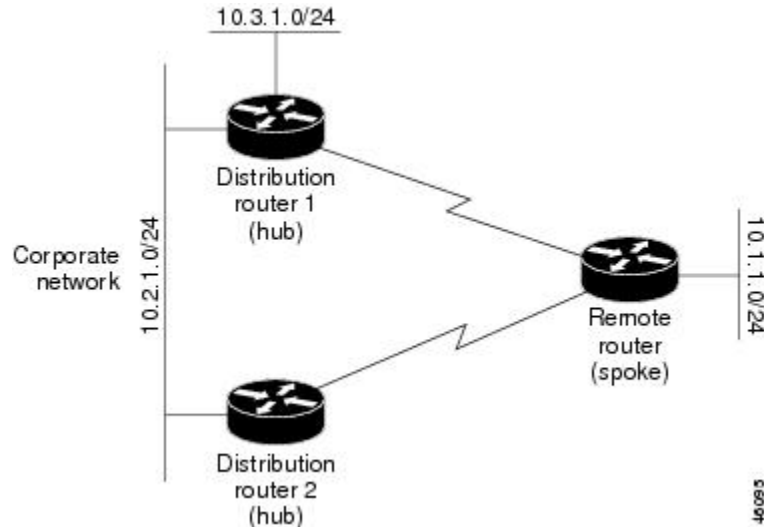
**Figure 4: Simple Dual-Homed Remote Topology**



The figure above shows a simple dual-homed remote with one remote router and two distribution routers. Both distribution routers maintain routes to the corporate network and stub network 10.1.1.0/24.

Dual-homed routing can introduce instability into an EIGRP network. In the figure below, distribution router 1 is directly connected to network 10.3.1.0/24. If summarization or filtering is applied on distribution router 1, the router will advertise network 10.3.1.0/24 to all of its directly connected EIGRP neighbors (distribution router 2 and the remote router).

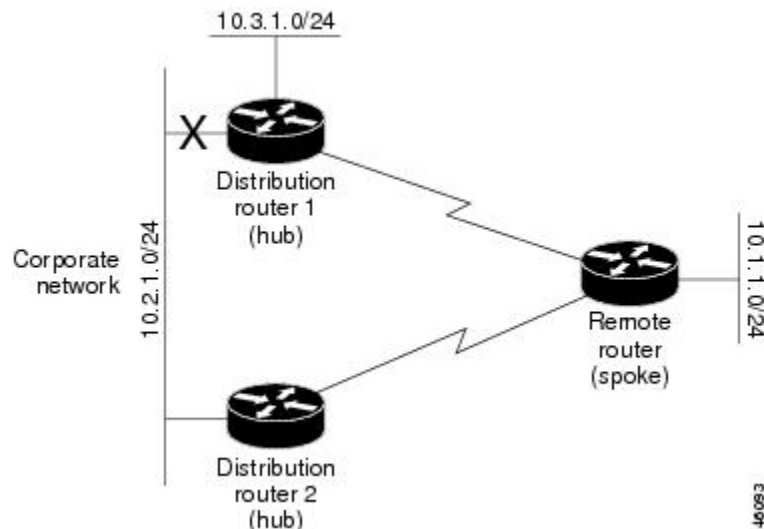
**Figure 5: Dual-Homed Remote Topology with Distribution Router 1 Connected to Two Networks**



The figure above shows a simple dual-homed remote router where distribution router 1 is connected to both network 10.3.1.0/24 and network 10.2.1.0/24.

If the 10.2.1.0/24 link between distribution router 1 and distribution router 2 has failed, the lowest cost path to network 10.3.1.0/24 from distribution router 2 is through the remote router (see the figure below). This route is not desirable because the traffic that was previously traveling across the corporate network 10.2.1.0/24 would now be sent across a much lower bandwidth connection. The over utilization of the lower bandwidth WAN connection can cause a number of problems that might affect the entire corporate network. The use of the lower bandwidth route that passes through the remote router might cause WAN EIGRP distribution routers to be dropped. Serial lines on distribution and remote routers could also be dropped, and EIGRP SIA errors on the distribution and core routers could occur.

**Figure 6: Dual-Homed Remote Topology with a Failed Route to a Distribution Router**



It is not desirable for traffic from distribution router 2 to travel through any remote router in order to reach network 10.3.1.0/24. If the links are sized to manage the load, it would be acceptable to use one of the backup routes. However, most networks of this type have remote routers located at remote offices with relatively slow links. This problem can be prevented if proper summarization is configured on the distribution router and remote router.

It is typically undesirable for traffic from a distribution router to use a remote router as a transit path. A typical connection from a distribution router to a remote router would have much less bandwidth than a connection at the network core. Attempting to use a remote router with a limited bandwidth connection as a transit path would generally produce excessive congestion to the remote router. The EIGRP Stub Routing feature can prevent this problem by preventing the remote router from advertising core routes back to distribution routers. Routes learned by the remote router from distribution router 1 will not be advertised to distribution router 2. Because the remote router will not advertise core routes to distribution router 2, the distribution router will not use the remote router as a transit for traffic destined for the network core.

The EIGRP Stub Routing feature provides greater network stability. If the network is not stable, this feature prevents EIGRP queries from being sent over limited bandwidth links to nontransit routers. Instead, distribution routers to which the stub router is connected answer the query on behalf of the stub router. This feature greatly reduces the chance of further network instability due to congested or problematic WAN links. The EIGRP Stub Routing feature also simplifies the configuration and maintenance of hub-and-spoke networks. When stub routing is enabled in dual-homed remote configurations, it is no longer necessary to configure filtering on remote routers to prevent those remote routers from appearing as transit paths to the hub routers.

**Caution**

---

The EIGRP Stub Routing feature should be used only on stub routers. A stub router is defined as a router connected to the network core or distribution layer through which core transit traffic should not flow. A stub router should not have any EIGRP neighbors other than distribution routers. Ignoring this restriction will cause undesirable behavior.

---

**Note**

---

Multiaccess interfaces such as ATM, Gigabit Ethernet, Frame Relay, ISDN PRI, and X.25 are supported by the EIGRP Stub Routing feature only when all routers on that interface, except the hub, are configured as stub routers.

---

## EIGRP Stub Routing Leak Map Support

In EIGRP stub routing configurations where there is a remote site with more than one router, only one of the remote routers can be configured as the stub router. If you have two distribution layer routers, and two routers at a remote site, there is no way to declare both remote routers as stub routers. If one remote router is configured as a stub router, the other remote router cannot learn routes toward the network core if the link between the stub router and the distribution layer router fails and cannot route around the failed link.

The stub router cannot readvertise routes it has learned from any neighboring EIGRP router. To resolve this issue, a leak map configuration can be added to the EIGRP stub routing feature that allows a selected set of learned routes to be readvertised to other peers. The set of routes allowed through the stub router are specified using a standard route map, so that routes can be matched based on tags, prefixes, or interfaces. These routes are marked using the site of origin code mechanism, which prevents the routes permitted through the stub from being readvertised into the core of the network.



Configure the **eigrp stub** command with the **leak-map** keyword to configure the EIGRP stub routing feature to reference a leak map that identifies routes that are allowed to be advertised on an EIGRP stub router that would normally have been suppressed.

## How to Configure EIGRP

- [Enabling EIGRP Autonomous System Configuration, page 17](#)
- [Enabling EIGRP Named Configuration, page 18](#)
- [Enabling EIGRP IPv6 VRF-Lite Named Configuration, page 20](#)
- [Configuring Optional EIGRP Parameters Autonomous System Configuration, page 21](#)
- [Configuring Optional EIGRP Parameters Named Configuration, page 23](#)
- [Configuring EIGRP Redistribution Autonomous System Configuration, page 25](#)
- [Configuring EIGRP Route Summarization Autonomous System Configuration, page 27](#)
- [Configuring EIGRP Route Summarization Named Configuration, page 28](#)
- [Configuring EIGRP Event Logging Autonomous System Configuration, page 31](#)
- [Configuring EIGRP Event Logging Named Configuration, page 32](#)
- [Configuring Equal and Unequal Cost Load Balancing Autonomous System Configuration, page 34](#)
- [Configuring Equal and Unequal Cost Load Balancing Named Configuration, page 35](#)
- [Configuring EIGRP Route Authentication Autonomous System Configuration, page 37](#)
- [Configuring EIGRP Route Authentication Named Configuration, page 39](#)
- [Adjusting the Interval Between Hello Packets and the Hold Time Autonomous System Configuration, page 43](#)
- [Adjusting the Interval Between Hello Packets and the Hold Time Named Configuration, page 44](#)
- [Disabling Split Horizon Autonomous System Configuration, page 46](#)
- [Disabling Split Horizon and Next-Hop-Self Named Configuration, page 47](#)
- [Configuring EIGRP Stub Routing Autonomous System Configuration, page 49](#)
- [Configuring EIGRP Stub Routing Named Configuration, page 50](#)
- [Monitoring and Maintaining EIGRP Autonomous System Configuration, page 52](#)
- [Monitoring and Maintaining EIGRP Named Configuration, page 55](#)

## Enabling EIGRP Autonomous System Configuration

Perform this task to enable EIGRP and create an EIGRP routing process. EIGRP sends updates to the interfaces in the specified networks. If you do not specify the network of an interface, the interface will not be advertised in any EIGRP update.

Configuring the **router eigrp** command with the *autonomous-system-number* argument creates an EIGRP configuration referred to as an autonomous system configuration. EIGRP autonomous system configuration creates an EIGRP routing instance that can be used for tagging routing information.

**SUMMARY STEPS**

1. **enable**
2. **configure terminal**
3. **router eigrp** *autonomous-system-number*
4. **network** *network-number*
5. **end**

**DETAILED STEPS**

	Command or Action	Purpose
<b>Step 1</b>	<b>enable</b>  <b>Example:</b> Router> enable	Enables privileged EXEC mode.  <ul style="list-style-type: none"> <li>• Enter your password if prompted.</li> </ul>
<b>Step 2</b>	<b>configure terminal</b>  <b>Example:</b> Router# configure terminal	Enters global configuration mode.
<b>Step 3</b>	<b>router eigrp</b> <i>autonomous-system-number</i>  <b>Example:</b> Router(config)# router eigrp 1	Configures an EIGRP routing process and enters router configuration mode.  <ul style="list-style-type: none"> <li>• A maximum of 30 EIGRP routing processes can be configured.</li> </ul>
<b>Step 4</b>	<b>network</b> <i>network-number</i>  <b>Example:</b> Router(config-router)# network 172.16.0.0	Associates networks with an EIGRP routing process.
<b>Step 5</b>	<b>end</b>  <b>Example:</b> Router(config-router)# end	Exits router configuration mode and returns to privileged EXEC mode.

**Enabling EIGRP Named Configuration**

Perform this task to enable EIGRP and to create an EIGRP routing process. EIGRP sends updates to the interfaces in the specified networks. If you do not specify the network of an interface, the interface will not be advertised in any EIGRP update.

Configuring the **router eigrp** command with the *virtual-instance-name* argument creates an EIGRP configuration referred to as an EIGRP named configuration. EIGRP named configuration does not create an EIGRP routing instance by itself. An EIGRP named configuration is a base configuration that is required to define address family configurations under it that are used for routing.

**SUMMARY STEPS**

1. **enable**
2. **configure terminal**
3. **router eigrp** *virtual-instance-name*
4. Do one of the following:
  - **address-family ipv4** [**multicast**] [**unicast**] [**vrf vrf-name**] **autonomous-system** *autonomous-system-number*
  - 
  - 
  - 
  - **address-family ipv6** [**unicast**] [**vrf vrf-name**] **autonomous-system** *autonomous-system-number*
5. **network** *ip-address* [*wildcard-mask*]
6. **end**

**DETAILED STEPS**

	<b>Command or Action</b>	<b>Purpose</b>
<b>Step 1</b>	<b>enable</b>  <b>Example:</b> Router> enable	Enables privileged EXEC mode. <ul style="list-style-type: none"> <li>• Enter your password if prompted.</li> </ul>
<b>Step 2</b>	<b>configure terminal</b>  <b>Example:</b> Router# configure terminal	Enters global configuration mode.
<b>Step 3</b>	<b>router eigrp</b> <i>virtual-instance-name</i>  <b>Example:</b> Router(config)# router eigrp virtual-name1	Configures the EIGRP routing process and enters router configuration mode.
<b>Step 4</b>	Do one of the following: <ul style="list-style-type: none"> <li>• <b>address-family ipv4</b> [<b>multicast</b>] [<b>unicast</b>] [<b>vrf vrf-name</b>] <b>autonomous-system</b> <i>autonomous-system-number</i></li> <li>•</li> <li>•</li> <li>•</li> <li>• <b>address-family ipv6</b> [<b>unicast</b>] [<b>vrf vrf-name</b>] <b>autonomous-system</b> <i>autonomous-system-number</i></li> </ul> <b>Example:</b> Router(config-router)# address-family ipv4 autonomous-system 45000	Enters address family configuration mode to configure an EIGRP IPv4 or IPv6 routing instance.

	Command or Action	Purpose
	<p><b>Example:</b></p> <pre>or</pre> <p><b>Example:</b></p> <pre>Router(config-router)# address-family ipv6 autonomous-system 45000</pre>	
<b>Step 5</b>	<p><b>network</b> <i>ip-address</i> [<i>wildcard-mask</i>]</p> <p><b>Example:</b></p> <pre>Router(config-router-af)# network 172.16.0.0</pre>	Specifies a network for the EIGRP routing process.
<b>Step 6</b>	<p><b>end</b></p> <p><b>Example:</b></p> <pre>Router(config-router-af)# end</pre>	Exits address family configuration mode and returns to privileged EXEC mode.

## Enabling EIGRP IPv6 VRF-Lite Named Configuration

Perform this task to enable IPv6 VRF-Lite in an EIGRP named configuration:

### SUMMARY STEPS

1. **enable**
2. **configure terminal**
3. **router eigrp** *virtual-instance-name*
4. **address-family ipv6 vrf** *vrf-name* **autonomous-system** *autonomous-system-number*
5. **end**

### DETAILED STEPS

	Command or Action	Purpose
<b>Step 1</b>	<p><b>enable</b></p> <p><b>Example:</b></p> <pre>Router&gt; enable</pre>	<p>Enables privileged EXEC mode.</p> <ul style="list-style-type: none"> <li>• Enter your password if prompted.</li> </ul>
<b>Step 2</b>	<p><b>configure terminal</b></p> <p><b>Example:</b></p> <pre>Router# configure terminal</pre>	Enters global configuration mode.
<b>Step 3</b>	<p><b>router eigrp</b> <i>virtual-instance-name</i></p>	Configures the EIGRP routing process and enters router configuration mode.

	Command or Action	Purpose
	<b>Example:</b> <pre>Router(config)# router eigrp virtual-name1</pre>	
<b>Step 4</b>	<b>address-family ipv6 vrf vrf-name autonomous-system autonomous-system-number</b>  <b>Example:</b> <pre>Router(config-router)# address-family ipv6 vrf vrf1 autonomous-system 45000</pre>	Enables EIGRP IPv6 VRF-Lite and enters address family configuration mode.
<b>Step 5</b>	<b>end</b>  <b>Example:</b> <pre>Router(config-router-af)# end</pre>	Exits address family configuration mode and returns to privileged EXEC mode.

## Configuring Optional EIGRP Parameters Autonomous System Configuration

Perform this task to configure optional EIGRP parameters including applying offsets to routing metrics, adjusting EIGRP metrics, and disabling automatic summarization in an EIGRP autonomous system configuration.

### SUMMARY STEPS

1. **enable**
2. **configure terminal**
3. **router eigrp autonomous-system**
4. **network ip-address [wildcard-mask]**
5. **passive-interface [default] [interface-type interface-number]**
6. **offset-list [access-list-number | access-list-name] {in | out} offset [interface-type interface-number]**
7. **metric weights tos k1 k2 k3 k4 k5**
8. **no auto-summary**
9. **exit**

### DETAILED STEPS

	Command or Action	Purpose
<b>Step 1</b>	<b>enable</b>  <b>Example:</b> <pre>Router&gt; enable</pre>	Enables privileged EXEC mode. <ul style="list-style-type: none"> <li>• Enter your password if prompted.</li> </ul>
<b>Step 2</b>	<b>configure terminal</b>	Enters global configuration mode.

	Command or Action	Purpose
	<p><b>Example:</b></p> <pre>Router# configure terminal</pre>	
<b>Step 3</b>	<p><b>router eigrp</b> <i>autonomous-system</i></p> <p><b>Example:</b></p> <pre>Router(config)# router eigrp 1</pre>	<p>Enables an EIGRP routing process and enters router configuration mode.</p> <ul style="list-style-type: none"> <li>A maximum of 30 EIGRP routing processes can be configured.</li> </ul>
<b>Step 4</b>	<p><b>network</b> <i>ip-address</i> [<i>wildcard-mask</i>]</p> <p><b>Example:</b></p> <pre>Router(config-router)# network 172.16.0.0</pre>	<p>Associates networks with an EIGRP routing process.</p>
<b>Step 5</b>	<p><b>passive-interface</b> [<b>default</b>] [<i>interface-type interface-number</i>]</p> <p><b>Example:</b></p> <pre>Router(config-router)# passive-interface</pre>	<p>(Optional) Suppresses EIGRP hello packets and routing updates on interfaces while still including the interface addresses in the topology database.</p>
<b>Step 6</b>	<p><b>offset-list</b> [<i>access-list-number</i>   <i>access-list-name</i>] {<b>in</b>   <b>out</b>} <i>offset</i> [<i>interface-type interface-number</i>]</p> <p><b>Example:</b></p> <pre>Router(config-router)# offset-list 21 in 10 gigabitethernet 0/0/1</pre>	<p>(Optional) Applies an offset to routing metrics.</p>
<b>Step 7</b>	<p><b>metric weights</b> <i>tos k1 k2 k3 k4 k5</i></p> <p><b>Example:</b></p> <pre>Router(config-router)# metric weights 0 2 0 2 0 0</pre>	<p>(Optional) Adjusts the EIGRP metric or K value.</p> <ul style="list-style-type: none"> <li>EIGRP uses the following formula to determine the total metric to the network:</li> </ul> $\text{EIGRP Metric} = 256 * ((K1 * Bw) + (K2 * Bw) / (256 - \text{Load}) + (K3 * \text{Delay}) * (K5 / (\text{Reliability} + K4)))$ <p><b>Note</b> If K5 is 0 then (K5 / (Reliability + K4)) is defined as 1.</p>
<b>Step 8</b>	<p><b>no auto-summary</b></p> <p><b>Example:</b></p> <pre>Router(config-router)# no auto-summary</pre>	<p>(Optional) Disables automatic summarization.</p> <p><b>Note</b> Automatic summarization is enabled by default.</p>
<b>Step 9</b>	<p><b>exit</b></p> <p><b>Example:</b></p> <pre>Router(config-router)# exit</pre>	<p>Exits router configuration mode.</p>

## Configuring Optional EIGRP Parameters Named Configuration

Perform this task to configure optional EIGRP named configuration parameters including applying offsets to routing metrics, adjusting EIGRP metrics, and disabling automatic summarization.

### SUMMARY STEPS

1. **enable**
2. **configure terminal**
3. **router eigrp** *virtual-instance-name*
4. Do one of the following:
  - **address-family ipv4** [**multicast**] [**unicast**] [**vrf vrf-name**] **autonomous-system** *autonomous-system-number*
  - 
  - 
  - **address-family ipv6** [**unicast**] [**vrf vrf-name**] **autonomous-system** *autonomous-system-number*
5. **network** *ip-address* [*wildcard-mask*]
6. **metric weights** *tos k1 k2 k3 k4 k5*
7. **af-interface** {**default** | *interface-type interface-number*}
8. **passive-interface** [**default**] [*interface-type interface-number*]
9. **bandwidth-percent** *maximum-bandwidth-percentage*
10. **exit-af-interface**
11. **topology** {**base** | *topology-name tid number*}
12. **offset-list** [*access-list-number* | *access-list-name*] [**in** | **out**] *offset* [*interface-type interface-number*]
13. **no auto-summary**
14. **exit-af-topology**

### DETAILED STEPS

	Command or Action	Purpose
Step 1	<b>enable</b>  <b>Example:</b> Router> enable	Enables privileged EXEC mode. <ul style="list-style-type: none"> <li>• Enter your password if prompted.</li> </ul>
Step 2	<b>configure terminal</b>  <b>Example:</b> Router# configure terminal	Enters global configuration mode.
Step 3	<b>router eigrp</b> <i>virtual-instance-name</i>  <b>Example:</b> Router(config)# router eigrp virtual-name1	Enables an EIGRP routing process and enters router configuration mode.

	Command or Action	Purpose
<b>Step 4</b>	<p>Do one of the following:</p> <ul style="list-style-type: none"> <li><b>address-family ipv4</b> [multicast] [unicast] [vrf vrf-name] autonomous-system <i>autonomous-system-number</i></li> <li></li> <li><b>address-family ipv6</b> [unicast] [vrf vrf-name] autonomous-system <i>autonomous-system-number</i></li> </ul> <p><b>Example:</b></p> <pre>Router(config-router)# address-family ipv4 autonomous-system 45000</pre> <p><b>Example:</b></p> <pre>Router(config-router)# address-family ipv6 autonomous-system 45000</pre>	Enters address family configuration mode to configure an EIGRP IPv4 or IPv6 routing instance.
<b>Step 5</b>	<p><b>network</b> <i>ip-address</i> [<i>wildcard-mask</i>]</p> <p><b>Example:</b></p> <pre>Router(config-router-af)# network 172.16.0.0</pre>	Specifies a network for the EIGRP routing process.
<b>Step 6</b>	<p><b>metric weights</b> <i>tos k1 k2 k3 k4 k5</i></p> <p><b>Example:</b></p> <pre>Router(config-router-af)# metric weights 0 2 0 2 0 0</pre>	<p>(Optional) Adjusts the EIGRP metric or K value.</p> <ul style="list-style-type: none"> <li>EIGRP uses the following formula to determine the total metric to the network:</li> </ul> $\text{EIGRP Metric} = 256 * ((K1 * Bw) + (K2 * Bw) / (256 - \text{Load}) + (K3 * \text{Delay}) * (K5 / (\text{Reliability} + K4)))$ <p><b>Note</b>If K5 is 0 then (K5 / (Reliability + K4)) is defined as 1.</p>
<b>Step 7</b>	<p><b>af-interface</b> { <b>default</b>   <i>interface-type interface-number</i> }</p> <p><b>Example:</b></p> <pre>Router(config-router-af)# af-interface gigabitethernet 0/0/1</pre>	Enters address family interface configuration mode and configures interface-specific EIGRP commands.
<b>Step 8</b>	<p><b>passive-interface</b> [<b>default</b>] [<i>interface-type interface-number</i>]</p> <p><b>Example:</b></p> <pre>Router(config-router-af-interface)# passive-interface</pre>	Suppresses EIGRP hello packets and routing updates on interfaces while still including the interface addresses in the topology database.
<b>Step 9</b>	<p><b>bandwidth-percent</b> <i>maximum-bandwidth-percentage</i></p>	Configures the percentage of bandwidth that may be used by an EIGRP address family on an interface.



	Command or Action	Purpose
	<p><b>Example:</b></p> <pre>Router(config-router-af-interface)# bandwidth-percent 75</pre>	
<b>Step 10</b>	<p><b>exit-af-interface</b></p> <p><b>Example:</b></p> <pre>Router(config-router-af-interface)# exit-af-interface</pre>	Exits address family interface configuration mode.
<b>Step 11</b>	<p><b>topology {base   topology-name tid number}</b></p> <p><b>Example:</b></p> <pre>Router(config-router-af)# topology base</pre>	Configures an EIGRP process to route IP traffic under the specified topology instance and enters address family topology configuration mode.
<b>Step 12</b>	<p><b>offset-list [access-list-number   access-list-name] {in   out} offset [interface-type interface-number]</b></p> <p><b>Example:</b></p> <pre>Router(config-router-af-topology)# offset-list 21 in 10 ethernet 0</pre>	(Optional) Applies an offset to routing metrics.
<b>Step 13</b>	<p><b>no auto-summary</b></p> <p><b>Example:</b></p> <pre>Router(config-router-af-topology)# no auto-summary</pre>	(Optional) Disables automatic summarization. <b>Note</b> Automatic summarization is enabled by default.
<b>Step 14</b>	<p><b>exit-af-topology</b></p> <p><b>Example:</b></p> <pre>Router(config-router-af-topology)# exit-af-topology</pre>	Exits address family topology configuration mode.

## Configuring EIGRP Redistribution Autonomous System Configuration

Perform this task to configure redistribution of non-EIGRP protocol metrics into EIGRP metrics and to configure the EIGRP administrative distance in an EIGRP autonomous system configuration.

You must use a default metric to redistribute a protocol into EIGRP, unless you use the **redistribute** command.

Metric defaults have been carefully set to work for a wide variety of networks. Take great care when changing these values.

Default metrics are supported only when you are redistributing from EIGRP or static routes.

An administrative distance is a rating of the trustworthiness of a routing information source, such as an individual router or a group of routers. Numerically, an administrative distance is an integer from 0 to 255. In general, the higher the value, the lower the trust rating. An administrative distance of 255 means the routing information source cannot be trusted at all and should be ignored.

**SUMMARY STEPS**

1. **enable**
2. **configure terminal**
3. **router eigrp** *autonomous-system*
4. **network** *ip-address* [*wildcard-mask*]
5. **redistribute** *protocol* [*process-id*] {**level-1** | **level-1-2** | **level-2**} [*autonomous-system-number*] [**metric** {*metric-value* | **transparent**}] [**metric-type** *type-value*] [**match** {**internal** | **external 1** | **external 2**}] [**tag** *tag-value*] [**route-map** *map-tag*] [**subnets**]
6. **distance eigrp** *internal-distance* *external-distance*
7. **default-metric** *bandwidth* *delay* *reliability* *loading* *mtu*
8. **end**

**DETAILED STEPS**

	Command or Action	Purpose
<b>Step 1</b>	<b>enable</b>  <b>Example:</b> Router> enable	Enables privileged EXEC mode. <ul style="list-style-type: none"><li>• Enter your password if prompted.</li></ul>
<b>Step 2</b>	<b>configure terminal</b>  <b>Example:</b> Router# configure terminal	Enters global configuration mode.
<b>Step 3</b>	<b>router eigrp</b> <i>autonomous-system</i>  <b>Example:</b> Router(config)# router eigrp 1	Enables an EIGRP routing process and enters router configuration mode. <ul style="list-style-type: none"><li>• A maximum of 30 EIGRP routing processes can be configured.</li></ul>
<b>Step 4</b>	<b>network</b> <i>ip-address</i> [ <i>wildcard-mask</i> ]  <b>Example:</b> Router(config-router)# network 172.16.0.0	Associates networks with an EIGRP routing process.
<b>Step 5</b>	<b>redistribute</b> <i>protocol</i> [ <i>process-id</i> ] { <b>level-1</b>   <b>level-1-2</b>   <b>level-2</b> } [ <i>autonomous-system-number</i> ] [ <b>metric</b> { <i>metric-value</i>   <b>transparent</b> }] [ <b>metric-type</b> <i>type-value</i> ] [ <b>match</b> { <b>internal</b>   <b>external 1</b>   <b>external 2</b> }] [ <b>tag</b> <i>tag-value</i> ] [ <b>route-map</b> <i>map-tag</i> ] [ <b>subnets</b> ]  <b>Example:</b> Router(config-router)# redistribute rip	Redistributes routes from one routing domain into another routing domain.
<b>Step 6</b>	<b>distance eigrp</b> <i>internal-distance</i> <i>external-distance</i>	Allows the use of two administrative distances--internal and external--that could be a better route to a node.

	Command or Action	Purpose
	<b>Example:</b> <pre>Router(config-router)# distance eigrp 80 130</pre>	
<b>Step 7</b>	<b>default-metric</b> <i>bandwidth delay reliability loading mtu</i>  <b>Example:</b> <pre>Router(config-router)# default-metric 1000 100 250 100 1500</pre>	Sets metrics for EIGRP.
<b>Step 8</b>	<b>end</b>  <b>Example:</b> <pre>Router(config-router)# end</pre>	Exits router configuration mode and returns to privileged EXEC mode.

## Configuring EIGRP Route Summarization Autonomous System Configuration

Perform this task to configure EIGRP to perform automatic summarization of subnet routes into network-level routes in an EIGRP autonomous system configuration.

### SUMMARY STEPS

1. **enable**
2. **configure terminal**
3. **router eigrp** *autonomous-system*
4. **exit**
5. **interface** *type number*
6. **ip summary-address eigrp** *as-number ip-address mask [admin-distance] [leak-map name]*
7. **ip bandwidth-percent eigrp** *as-number percent*
8. **end**

### DETAILED STEPS

	Command or Action	Purpose
<b>Step 1</b>	<b>enable</b>  <b>Example:</b> <pre>Router&gt; enable</pre>	Enables privileged EXEC mode. <ul style="list-style-type: none"> <li>• Enter your password if prompted.</li> </ul>
<b>Step 2</b>	<b>configure terminal</b>  <b>Example:</b> <pre>Router# configure terminal</pre>	Enters global configuration mode.

	Command or Action	Purpose
<b>Step 3</b>	<b>router eigrp</b> <i>autonomous-system</i>  <b>Example:</b> Router(config)# router eigrp 101	Enables an EIGRP routing process and enters router configuration mode. <ul style="list-style-type: none"> <li>A maximum of 30 EIGRP routing processes can be configured.</li> </ul>
<b>Step 4</b>	<b>exit</b>  <b>Example:</b> Router(config-router)# exit	Exits router configuration mode.
<b>Step 5</b>	<b>interface</b> <i>type number</i>  <b>Example:</b> Router(config)# interface gigabitethernet0/0/1	Enters interface configuration mode.
<b>Step 6</b>	<b>ip summary-address eigrp</b> <i>as-number ip-address mask [admin-distance] [leak-map name]</i>  <b>Example:</b> Router(config-if)# ip summary-address eigrp 100 0.0.0.0 0.0.0.0	(Optional) Configures a summary aggregate address.
<b>Step 7</b>	<b>ip bandwidth-percent eigrp</b> <i>as-number percent</i>  <b>Example:</b> Router(config-if)# ip bandwidth-percent eigrp 209 75	(Optional) Configures the percentage of bandwidth that may be used by EIGRP on an interface.
<b>Step 8</b>	<b>end</b>  <b>Example:</b> Router(config-if)# end	Exits interface configuration mode and returns to privileged EXEC mode.

## Configuring EIGRP Route Summarization Named Configuration

Perform this task to configure EIGRP to perform automatic summarization of subnet routes into network-level routes in an EIGRP named configuration.

**SUMMARY STEPS**

1. **enable**
2. **configure terminal**
3. **router eigrp** *virtual-instance-name*
4. Do one of the following:
  - **address-family ipv4** [**multicast**] [**unicast**] [**vrf vrf-name**] **autonomous-system** *autonomous-system-number*
  - 
  - 
  - 
  - **address-family ipv6** [**unicast**] [**vrf vrf-name**] **autonomous-system** *autonomous-system-number*
5. **af-interface** *interface-type interface-number* }
6. **summary-address** *ip-address mask* [*administrative-distance* [**leak-map** *leak-map-name*]]
7. **exit-af-interface**
8. **topology** { **base** | *topology-name* **tid** *number* }
9. **summary-metric** *network-address subnet-mask bandwidth delay reliability load mtu*
10. **end**

**DETAILED STEPS**

	Command or Action	Purpose
Step 1	<p><b>enable</b></p> <p><b>Example:</b></p> <pre>Router&gt; enable</pre>	<p>Enables privileged EXEC mode.</p> <ul style="list-style-type: none"> <li>• Enter your password if prompted.</li> </ul>
Step 2	<p><b>configure terminal</b></p> <p><b>Example:</b></p> <pre>Router# configure terminal</pre>	<p>Enters global configuration mode.</p>
Step 3	<p><b>router eigrp</b> <i>virtual-instance-name</i></p> <p><b>Example:</b></p> <pre>Router(config)# router eigrp virtual-name1</pre>	<p>Enables an EIGRP routing process and enters router configuration mode.</p>
Step 4	<p>Do one of the following:</p> <ul style="list-style-type: none"> <li>• <b>address-family ipv4</b> [<b>multicast</b>] [<b>unicast</b>] [<b>vrf vrf-name</b>] <b>autonomous-system</b> <i>autonomous-system-number</i></li> <li>•</li> <li>•</li> <li>•</li> <li>• <b>address-family ipv6</b> [<b>unicast</b>] [<b>vrf vrf-name</b>] <b>autonomous-system</b> <i>autonomous-system-number</i></li> </ul>	<p>Enters address family configuration mode to configure an EIGRP IPv4 or IPv6 routing instance.</p>

	Command or Action	Purpose
	<p><b>Example:</b></p> <pre>Router(config-router)# address-family ipv4 autonomous-system 45000</pre> <p><b>Example:</b></p> <p><b>Example:</b></p> <pre>Router(config-router)# address-family ipv6 autonomous-system 45000</pre>	
<b>Step 5</b>	<p><b>af-interface</b> <i>interface-type interface-number</i> }</p> <p><b>Example:</b></p> <pre>Router(config-router-af)# af-interface gigabitethernet 0/0/1</pre>	Enters address family interface configuration mode and configures interface-specific EIGRP commands.
<b>Step 6</b>	<p><b>summary-address</b> <i>ip-address mask [administrative-distance [leak-map leak-map-name]]</i></p> <p><b>Example:</b></p> <pre>Router(config-router-af-interface)# summary-address 192.168.0.0 255.255.0.0</pre>	Configures a summary address for EIGRP.
<b>Step 7</b>	<p><b>exit-af-interface</b></p> <p><b>Example:</b></p> <pre>Router(config-router-af-interface)# exit-af-interface</pre>	Exits address family interface configuration mode.
<b>Step 8</b>	<p><b>topology</b> { <b>base</b>   <i>topology-name</i> <b>tid number</b> }</p> <p><b>Example:</b></p> <pre>Router(config-router-af)# topology base</pre>	Configures an EIGRP process to route IP traffic under the specified topology instance and enters address family topology configuration mode.
<b>Step 9</b>	<p><b>summary-metric</b> <i>network-address subnet-mask bandwidth delay reliability load mtu</i></p> <p><b>Example:</b></p> <pre>Router(config-router-af-topology)# summary-metric 192.168.0.0/16 10000 10 255 1 1500</pre>	(Optional) Configures a fixed metric for an EIGRP summary aggregate address.
<b>Step 10</b>	<p><b>end</b></p> <p><b>Example:</b></p> <pre>Router(config-router-af-topology)# end</pre>	Exits address family topology configuration mode and returns to privileged EXEC mode.

## Configuring EIGRP Event Logging Autonomous System Configuration

Perform this task to configure event logging in an EIGRP autonomous system configuration:

### SUMMARY STEPS

1. **enable**
2. **configure terminal**
3. **router eigrp** *autonomous-system*
4. **eigrp event-log-size** *size*
5. **eigrp log-neighbor-changes**
6. **eigrp log-neighbor-warnings** [*seconds*]
7. **end**

### DETAILED STEPS

	Command or Action	Purpose
Step 1	<b>enable</b>  <b>Example:</b> Router> enable	Enables privileged EXEC mode. <ul style="list-style-type: none"> <li>• Enter your password if prompted.</li> </ul>
Step 2	<b>configure terminal</b>  <b>Example:</b> Router# configure terminal	Enters global configuration mode.
Step 3	<b>router eigrp</b> <i>autonomous-system</i>  <b>Example:</b> Router(config)# router eigrp 101	Enables an EIGRP routing process and enters router configuration mode. <ul style="list-style-type: none"> <li>• A maximum of 30 EIGRP routing processes can be configured.</li> </ul>
Step 4	<b>eigrp event-log-size</b> <i>size</i>  <b>Example:</b> Router(config-router)# eigrp event-log-size 5000010	(Optional) Sets the size of the EIGRP event log.
Step 5	<b>eigrp log-neighbor-changes</b>  <b>Example:</b> Router(config-router)# eigrp log-neighbor-changes	(Optional) Enables logging of EIGRP neighbor adjacency changes. <ul style="list-style-type: none"> <li>• By default, the system logs EIGRP neighbor adjacency changes to help you monitor the stability of the routing system and detect problems.</li> </ul>
Step 6	<b>eigrp log-neighbor-warnings</b> [ <i>seconds</i> ]	(Optional) Enables the logging of EIGRP neighbor warning messages.

	Command or Action	Purpose
	<b>Example:</b> <pre>Router(config-router)# eigrp log-neighbor-warnings 300</pre>	
<b>Step 7</b>	<b>end</b>  <b>Example:</b> <pre>Router(config-router)# end</pre>	Exits router configuration mode and returns to privileged EXEC mode.

## Configuring EIGRP Event Logging Named Configuration

Perform this task to configure event logging in an EIGRP named configuration:

### SUMMARY STEPS

1. **enable**
2. **configure terminal**
3. **router eigrp** *virtual-instance-name*
4. Do one of the following:
  - **address-family ipv4** [**multicast**] [**unicast**] [**vrf vrf-name**] **autonomous-system** *autonomous-system-number*
  - 
  - 
  - 
  - **address-family ipv6** [**unicast**] [**vrf vrf-name**] **autonomous-system** *autonomous-system-number*
5. **eigrp log-neighbor-warnings** [*seconds*]
6. **eigrp log-neighbor-changes**
7. **topology** {**base** | *topology-name* **tid** *number*}
8. **eigrp event-log-size** *size*
9. **end**

### DETAILED STEPS

	Command or Action	Purpose
<b>Step 1</b>	<b>enable</b>  <b>Example:</b> <pre>Router&gt; enable</pre>	Enables privileged EXEC mode. <ul style="list-style-type: none"> <li>• Enter your password if prompted.</li> </ul>
<b>Step 2</b>	<b>configure terminal</b>	Enters global configuration mode.



	Command or Action	Purpose
	<p><b>Example:</b></p> <pre>Router# configure terminal</pre>	
<b>Step 3</b>	<p><b>router eigrp</b> <i>virtual-instance-name</i></p> <p><b>Example:</b></p> <pre>Router(config)# router eigrp virtual-name1</pre>	Enables an EIGRP routing process and enters router configuration mode.
<b>Step 4</b>	<p>Do one of the following:</p> <ul style="list-style-type: none"> <li>• <b>address-family ipv4</b> [<b>multicast</b>] [<b>unicast</b>] [<b>vrf vrf-name</b>] <b>autonomous-system</b> <i>autonomous-system-number</i></li> <li>•</li> <li>•</li> <li>• <b>address-family ipv6</b> [<b>unicast</b>] [<b>vrf vrf-name</b>] <b>autonomous-system</b> <i>autonomous-system-number</i></li> </ul> <p><b>Example:</b></p> <pre>Router(config-router)# address-family ipv4 autonomous-system 45000</pre> <p><b>Example:</b></p> <pre>Router(config-router)# address-family ipv6 autonomous-system 45000</pre>	Enters address family configuration mode to configure an EIGRP IPv4 or IPv6 routing instance.
<b>Step 5</b>	<p><b>eigrp log-neighbor-warnings</b> [<i>seconds</i>]</p> <p><b>Example:</b></p> <pre>Router(config-router-af)# eigrp log-neighbor-warnings 300</pre>	(Optional) Enables the logging of EIGRP neighbor warning messages.
<b>Step 6</b>	<p><b>eigrp log-neighbor-changes</b></p> <p><b>Example:</b></p> <pre>Router(config-router-af)# eigrp log-neighbor-changes</pre>	<p>(Optional) Enables logging of EIGRP neighbor adjacency changes.</p> <ul style="list-style-type: none"> <li>• By default, the system logs EIGRP neighbor adjacency changes to help you monitor the stability of the routing system and detect problems.</li> </ul>
<b>Step 7</b>	<p><b>topology</b> {<b>base</b>   <i>topology-name</i> <b>tid</b> <i>number</i>}</p>	Configures an EIGRP process to route IP traffic under the specified topology instance and enters address family topology configuration mode.

	Command or Action	Purpose
	<b>Example:</b> Router(config-router-af)# topology base	
<b>Step 8</b>	<b>eigrp event-log-size</b> <i>size</i>  <b>Example:</b> Router(config-router-af-topology)# eigrp event-log-size 10000	(Optional) Sets the size of the EIGRP event log.
<b>Step 9</b>	<b>end</b>  <b>Example:</b> Router(config-router-af-topology)# end	Exits address family topology configuration mode and returns to privileged EXEC mode.

## Configuring Equal and Unequal Cost Load Balancing Autonomous System Configuration

Perform the following task to configure equal and unequal cost load balancing in an EIGRP autonomous system configuration:

### SUMMARY STEPS

1. **enable**
2. **configure terminal**
3. **router eigrp** *autonomous-system*
4. **traffic-share balanced**
5. **maximum-paths** *number-of-paths*
6. **variance** *multiplier*
7. **end**

### DETAILED STEPS

	Command or Action	Purpose
<b>Step 1</b>	<b>enable</b>  <b>Example:</b> Router> enable	Enables privileged EXEC mode. <ul style="list-style-type: none"> <li>• Enter your password if prompted.</li> </ul>
<b>Step 2</b>	<b>configure terminal</b>  <b>Example:</b> Router# configure terminal	Enters global configuration mode.

	Command or Action	Purpose
<b>Step 3</b>	<b>router eigrp</b> <i>autonomous-system</i>  <b>Example:</b> Router(config)# router eigrp 101	Enables an EIGRP routing process and enters router configuration mode. <ul style="list-style-type: none"> <li>• A maximum of 30 EIGRP routing processes can be configured.</li> </ul>
<b>Step 4</b>	<b>traffic-share balanced</b>  <b>Example:</b> Router(config-router)# traffic-share balanced	Controls how traffic is distributed among routes when multiple routes for the same destination network have different costs.
<b>Step 5</b>	<b>maximum-paths</b> <i>number-of-paths</i>  <b>Example:</b> Router(config-router)# maximum-paths 5	Controls the maximum number of parallel routes that an IP routing protocol can support.
<b>Step 6</b>	<b>variance</b> <i>multiplier</i>  <b>Example:</b> Router(config-router)# variance 1	Controls load balancing in an internetwork based on EIGRP.
<b>Step 7</b>	<b>end</b>  <b>Example:</b> Router(config-router)# end	Exits router configuration mode and returns to privileged EXEC mode.

## Configuring Equal and Unequal Cost Load Balancing Named Configuration

Perform the following task to configure equal and unequal cost load balancing in an EIGRP named configuration:

**SUMMARY STEPS**

1. **enable**
2. **configure terminal**
3. **router eigrp** *virtual-instance-name*
4. Do one of the following:
  - **address-family ipv4** [**multicast**] [**unicast**] [**vrf vrf-name**] **autonomous-system** *autonomous-system-number*
  - 
  - 
  - **address-family ipv6** [**unicast**] [**vrf vrf-name**] **autonomous-system** *autonomous-system-number*
5. **topology** {**base** | *topology-name* **tid** *number*}
6. **traffic-share balanced**
7. **maximum-paths** *number-of-paths*
8. **variance** *multiplier*
9. **end**

**DETAILED STEPS**

	Command or Action	Purpose
<b>Step 1</b>	<b>enable</b>  <b>Example:</b> Router> enable	Enables privileged EXEC mode. <ul style="list-style-type: none"> <li>• Enter your password if prompted.</li> </ul>
<b>Step 2</b>	<b>configure terminal</b>  <b>Example:</b> Router# configure terminal	Enters global configuration mode.
<b>Step 3</b>	<b>router eigrp</b> <i>virtual-instance-name</i>  <b>Example:</b> Router(config)# router eigrp virtual-name1	Enables an EIGRP routing process and enters router configuration mode.
<b>Step 4</b>	Do one of the following: <ul style="list-style-type: none"> <li>• <b>address-family ipv4</b> [<b>multicast</b>] [<b>unicast</b>] [<b>vrf vrf-name</b>] <b>autonomous-system</b> <i>autonomous-system-number</i></li> <li>•</li> <li>•</li> <li>• <b>address-family ipv6</b> [<b>unicast</b>] [<b>vrf vrf-name</b>] <b>autonomous-system</b> <i>autonomous-system-number</i></li> </ul>	Enters address family configuration mode to configure an EIGRP IPv4 or IPv6 routing instance.

	Command or Action	Purpose
	<p><b>Example:</b></p> <pre>Router(config-router)# address-family ipv4 autonomous-system 45000</pre> <p><b>Example:</b></p> <p>or</p> <p><b>Example:</b></p> <pre>Router(config-router)# address-family ipv6 autonomous-system 45000</pre>	
<b>Step 5</b>	<p><b>topology</b> {base   <i>topology-name</i> <b>tid</b> <i>number</i>}</p> <p><b>Example:</b></p> <pre>Router(config-router-af)# topology base</pre>	Configures an EIGRP process to route IP traffic under the specified topology instance and enters address family topology configuration mode.
<b>Step 6</b>	<p><b>traffic-share</b> <b>balanced</b></p> <p><b>Example:</b></p> <pre>Router(config-router-af-topology)# traffic-share balanced</pre>	Controls how traffic is distributed among routes when multiple routes for the same destination network have different costs.
<b>Step 7</b>	<p><b>maximum-paths</b> <i>number-of-paths</i></p> <p><b>Example:</b></p> <pre>Router(config-router-af-topology)# maximum-paths 5</pre>	Controls the maximum number of parallel routes that an IP routing protocol can support.
<b>Step 8</b>	<p><b>variance</b> <i>multiplier</i></p> <p><b>Example:</b></p> <pre>Router(config-router-af-topology)# variance 1</pre>	Controls load balancing in an internetwork based on EIGRP.
<b>Step 9</b>	<p><b>end</b></p> <p><b>Example:</b></p> <pre>Router(config-router-af-topology)# end</pre>	Exits address family topology configuration mode and returns to privileged EXEC mode.

## Configuring EIGRP Route Authentication Autonomous System Configuration

Perform the following task to configure route authentication in an EIGRP autonomous system configuration:

Before you can configure EIGRP route authentication, you must enable EIGRP.

**SUMMARY STEPS**

1. **enable**
2. **configure terminal**
3. **interface** *type slot*
4. **ip authentication mode eigrp** *autonomous-system md5*
5. **ip authentication key-chain eigrp** *autonomous-system key-chain*
6. **exit**
7. **key chain** *name-of-chain*
8. **key** *key-id*
9. **key-string** *text*
10. **accept-lifetime** *start-time* {**infinite** | *end-time* | **duration** *seconds*}
11. **send-lifetime** *start-time* {**infinite** | *end-time* | **duration** *seconds*}
12. **end**

**DETAILED STEPS**

	<b>Command or Action</b>	<b>Purpose</b>
<b>Step 1</b>	<b>enable</b>  <b>Example:</b> Router> enable	Enables privileged EXEC mode. <ul style="list-style-type: none"> <li>• Enter your password if prompted.</li> </ul>
<b>Step 2</b>	<b>configure terminal</b>  <b>Example:</b> Router# configure terminal	Enters global configuration mode.
<b>Step 3</b>	<b>interface</b> <i>type slot</i>  <b>Example:</b> Router(config)# interface gigabitethernet 0/0/1	Configures an interface type and enters interface configuration mode.
<b>Step 4</b>	<b>ip authentication mode eigrp</b> <i>autonomous-system md5</i>  <b>Example:</b> Router(config-if)# ip authentication mode eigrp 1 md5	Enables MD5 authentication in EIGRP packets.
<b>Step 5</b>	<b>ip authentication key-chain eigrp</b> <i>autonomous-system key-chain</i>  <b>Example:</b> Router(config-if)# ip authentication key-chain eigrp 1 keychain1	Enables authentication of EIGRP packets.
<b>Step 6</b>	<b>exit</b>	Exits to global configuration mode.

	Command or Action	Purpose
	<p><b>Example:</b></p> <pre>Router(config-if)# exit</pre>	
<b>Step 7</b>	<p><b>key chain</b> <i>name-of-chain</i></p> <p><b>Example:</b></p> <pre>Router(config)# key chain keychain1</pre>	Identifies a key chain and enters key chain configuration mode.
<b>Step 8</b>	<p><b>key</b> <i>key-id</i></p> <p><b>Example:</b></p> <pre>Router(config-keychain)# key 1</pre>	Identifies the key number and enters key chain key configuration mode.
<b>Step 9</b>	<p><b>key-string</b> <i>text</i></p> <p><b>Example:</b></p> <pre>Router(config-keychain-key)# key-string 0987654321</pre>	Identifies the key string.
<b>Step 10</b>	<p><b>accept-lifetime</b> <i>start-time</i> {<b>infinite</b>   <i>end-time</i>   <b>duration</b> <i>seconds</i>}</p> <p><b>Example:</b></p> <pre>Router(config-keychain-key)# accept-lifetime 04:00:00 Jan 4 2007 infinite</pre>	(Optional) Specifies the time period during which the key can be received.
<b>Step 11</b>	<p><b>send-lifetime</b> <i>start-time</i> {<b>infinite</b>   <i>end-time</i>   <b>duration</b> <i>seconds</i>}</p> <p><b>Example:</b></p> <pre>Router(config-keychain-key)# send-lifetime 04:00:00 Dec 4 2006 infinite</pre>	(Optional) Specifies the time period during which the key can be sent.
<b>Step 12</b>	<p><b>end</b></p> <p><b>Example:</b></p> <pre>Router(config-keychain-key)# end</pre>	Exits key chain key configuration mode and returns to privileged EXEC mode.

## Configuring EIGRP Route Authentication Named Configuration

Perform the following task to configure route authentication in an EIGRP named configuration:

Before you can configure EIGRP route authentication, you must enable EIGRP.

**SUMMARY STEPS**

1. **enable**
2. **configure terminal**
3. **router eigrp** *virtual-instance-name*
4. Do one of the following:
  - **address-family ipv4** [**multicast**] [**unicast**] [**vrf** *vrf-name*] **autonomous-system** *autonomous-system-number*
  - 
  - 
  - **address-family ipv6** [**unicast**] [**vrf** *vrf-name*] **autonomous-system** *autonomous-system-number*
5. **network** *ip-address* [*wildcard-mask*]
6. **af-interface** {**default** | *interface-type interface-number*}
7. **authentication key-chain** *name-of-chain*
8. **authentication mode** {**hmac-sha-256** *encryption-type password* | **md5**}
9. **exit-af-interface**
10. **exit-address-family**
11. **exit**
12. **key chain** *name-of-chain*
13. **key** *key-id*
14. **key-string** *text*
15. **accept-lifetime** *start-time* {**infinite** | *end-time* | **duration** *seconds*}
16. **send-lifetime** *start-time* {**infinite** | *end-time* | **duration** *seconds*}
17. **end**

**DETAILED STEPS**

	Command or Action	Purpose
<b>Step 1</b>	<b>enable</b>  <b>Example:</b> Router> enable	Enables privileged EXEC mode. <ul style="list-style-type: none"> <li>• Enter your password if prompted.</li> </ul>
<b>Step 2</b>	<b>configure terminal</b>  <b>Example:</b> Router# configure terminal	Enters global configuration mode.
<b>Step 3</b>	<b>router eigrp</b> <i>virtual-instance-name</i>  <b>Example:</b> Router(config)# router eigrp virtual-name1	Enables an EIGRP routing process and enters router configuration mode.



	Command or Action	Purpose
<b>Step 4</b>	<p>Do one of the following:</p> <ul style="list-style-type: none"> <li><b>address-family ipv4</b> [<i>multicast</i>] [<i>unicast</i>] [<i>vrf vrf-name</i>] <b>autonomous-system</b> <i>autonomous-system-number</i></li> <li>.</li> <li>.</li> <li>.</li> <li><b>address-family ipv6</b> [<i>unicast</i>] [<i>vrf vrf-name</i>] <b>autonomous-system</b> <i>autonomous-system-number</i></li> </ul> <p><b>Example:</b></p> <pre>Router(config-router)# address-family ipv4 autonomous- system 45000</pre> <p><b>Example:</b></p> <pre>Router(config-router)# address-family ipv6 autonomous- system 45000</pre>	Enters address family configuration mode to configure an EIGRP IPv4 or IPv6 routing instance.
<b>Step 5</b>	<p><b>network</b> <i>ip-address</i> [<i>wildcard-mask</i>]</p> <p><b>Example:</b></p> <pre>Router(config-router-af)# network 172.16.0.0</pre>	Associates networks with an EIGRP routing process.
<b>Step 6</b>	<p><b>af-interface</b> {<i>default</i>   <i>interface-type interface-number</i>}</p> <p><b>Example:</b></p> <pre>Router(config-router-af)# af-interface ethernet0/0</pre>	Enters address family interface configuration mode and configures interface-specific EIGRP commands.
<b>Step 7</b>	<p><b>authentication key-chain</b> <i>name-of-chain</i></p> <p><b>Example:</b></p> <pre>Router(config-router-af-interface)# authentication key- chain SITE1</pre>	Specifies an authentication key chain for EIGRP.
<b>Step 8</b>	<p><b>authentication mode</b> {<i>hmac-sha-256 encryption-type password</i>   <b>md5</b>}</p> <p><b>Example:</b></p> <pre>Router(config-router-af-interface)# authentication mode md5</pre>	Specifies the type of authentication used in an EIGRP address family for the EIGRP instance.
<b>Step 9</b>	<b>exit-af-interface</b>	Exits address family interface configuration mode.

	Command or Action	Purpose
	<p><b>Example:</b></p> <pre>Router(config-router-af-interface)# exit-af- interface</pre>	
<b>Step 10</b>	<p><b>exit-address-family</b></p> <p><b>Example:</b></p> <pre>Router(config-router-af)# exit-address-family</pre>	Exits address family configuration mode.
<b>Step 11</b>	<p><b>exit</b></p> <p><b>Example:</b></p> <pre>Router(config-router)# exit</pre>	Exits router configuration mode and returns to global configuration mode.
<b>Step 12</b>	<p><b>key chain</b> <i>name-of-chain</i></p> <p><b>Example:</b></p> <pre>Router(config)# key chain keychain1</pre>	Identifies a key chain and enters key chain configuration mode.
<b>Step 13</b>	<p><b>key</b> <i>key-id</i></p> <p><b>Example:</b></p> <pre>Router(config-keychain)# key 1</pre>	Identifies the key number and enters key chain key configuration mode.
<b>Step 14</b>	<p><b>key-string</b> <i>text</i></p> <p><b>Example:</b></p> <pre>Router(config-keychain-key)# key-string 0987654321</pre>	Identifies the key string.
<b>Step 15</b>	<p><b>accept-lifetime</b> <i>start-time</i> {<b>infinite</b>   <i>end-time</i>   <b>duration</b> <i>seconds</i>}</p> <p><b>Example:</b></p> <pre>Router(config-keychain-key)# accept-lifetime 04:00:00 Jan 4 2007 infinite</pre>	(Optional) Specifies the time period during which the key can be received.
<b>Step 16</b>	<p><b>send-lifetime</b> <i>start-time</i> {<b>infinite</b>   <i>end-time</i>   <b>duration</b> <i>seconds</i>}</p> <p><b>Example:</b></p> <pre>Router(config-keychain-key)# send-lifetime 04:00:00 Dec 4 2006 infinite</pre>	(Optional) Specifies the time period during which the key can be sent.
<b>Step 17</b>	<p><b>end</b></p> <p><b>Example:</b></p> <pre>Router(config-keychain-key)# end</pre>	Exits key chain key configuration mode and returns to privileged EXEC mode.

## Adjusting the Interval Between Hello Packets and the Hold Time Autonomous System Configuration

Perform the following task to adjust the interval between hello packets and the hold time in an EIGRP autonomous system configuration:



### Note

Cisco recommends not to adjust the hold time.

### SUMMARY STEPS

1. **enable**
2. **configure terminal**
3. **router eigrp** *autonomous-system-number*
4. **exit**
5. **interface** *slot / port*
6. **ip hello-interval eigrp** *autonomous-system-number seconds*
7. **ip hold-time eigrp** *autonomous-system-number seconds*
8. **end**

### DETAILED STEPS

	Command or Action	Purpose
Step 1	<b>enable</b>  <b>Example:</b> Router> enable	Enables privileged EXEC mode. <ul style="list-style-type: none"> <li>• Enter your password if prompted.</li> </ul>
Step 2	<b>configure terminal</b>  <b>Example:</b> Router# configure terminal	Enters global configuration mode.
Step 3	<b>router eigrp</b> <i>autonomous-system-number</i>  <b>Example:</b> Router(config)# router eigrp 101	Enables an EIGRP routing process and enters router configuration mode. <ul style="list-style-type: none"> <li>• A maximum of 30 EIGRP routing processes can be configured.</li> </ul>
Step 4	<b>exit</b>  <b>Example:</b> Router(config-router)# exit	Exits to global configuration mode.
Step 5	<b>interface</b> <i>slot / port</i>	Enters interface configuration mode.

	Command or Action	Purpose
	<b>Example:</b> Router(config)# interface gigabitethernet 0/1/1	
<b>Step 6</b>	<b>ip hello-interval eigrp</b> <i>autonomous-system-number seconds</i>  <b>Example:</b> Router(config-if)# ip hello-interval eigrp 109 10	Configures the hello interval for an EIGRP routing process.
<b>Step 7</b>	<b>ip hold-time eigrp</b> <i>autonomous-system-number seconds</i>  <b>Example:</b> Router(config-if)# ip hold-time eigrp 109 40	Configures the hold time for an EIGRP routing process.  <b>Note</b> Do not adjust the hold time without the advice from your technical support personnel.
<b>Step 8</b>	<b>end</b>  <b>Example:</b> Router(config-if)# end	Exits interface configuration mode and returns to privileged EXEC mode.

## Adjusting the Interval Between Hello Packets and the Hold Time Named Configuration

Perform the following task to adjust the interval between hello packets and the hold time in an EIGRP named configuration:



### Note

Do not adjust the hold time without the advice from your technical support personnel.

**SUMMARY STEPS**

1. **enable**
2. **configure terminal**
3. **router eigrp** *virtual-instance-name*
4. Do one of the following:
  - **address-family ipv4** [**multicast**] [**unicast**] [**vrf vrf-name**] **autonomous-system** *autonomous-system-number*
  - 
  - 
  - **address-family ipv6** [**unicast**] [**vrf vrf-name**] **autonomous-system** *autonomous-system-number*
5. **af-interface** {**default** | *interface-type interface-number*}
6. **hello-interval** *seconds*
7. **hold-time** *seconds*
8. **end**

**DETAILED STEPS**

	Command or Action	Purpose
<b>Step 1</b>	<b>enable</b>  <b>Example:</b> Router> enable	Enables privileged EXEC mode. <ul style="list-style-type: none"> <li>• Enter your password if prompted.</li> </ul>
<b>Step 2</b>	<b>configure terminal</b>  <b>Example:</b> Router# configure terminal	Enters global configuration mode.
<b>Step 3</b>	<b>router eigrp</b> <i>virtual-instance-name</i>  <b>Example:</b> Router(config)# router eigrp virtual-name1	Enables an EIGRP routing process and enters router configuration mode.
<b>Step 4</b>	Do one of the following: <ul style="list-style-type: none"> <li>• <b>address-family ipv4</b> [<b>multicast</b>] [<b>unicast</b>] [<b>vrf vrf-name</b>] <b>autonomous-system</b> <i>autonomous-system-number</i></li> <li>•</li> <li>•</li> <li>• <b>address-family ipv6</b> [<b>unicast</b>] [<b>vrf vrf-name</b>] <b>autonomous-system</b> <i>autonomous-system-number</i></li> </ul>	Enters address family configuration mode to configure an EIGRP IPv4 or IPv6 routing instance.

	Command or Action	Purpose
	<p><b>Example:</b></p> <pre>Router(config-router)# address-family ipv4 autonomous-system 45000</pre> <p><b>Example:</b></p> <p><b>Example:</b></p> <pre>Router(config-router)# address-family ipv6 autonomous-system 45000</pre>	
<b>Step 5</b>	<p><b>af-interface</b> { <b>default</b>   <i>interface-type interface-number</i> }</p> <p><b>Example:</b></p> <pre>Router(config-router-af)# af-interface gigabitethernet 0/0/1</pre>	Enters address family interface configuration mode and configures interface-specific EIGRP commands.
<b>Step 6</b>	<p><b>hello-interval</b> <i>seconds</i></p> <p><b>Example:</b></p> <pre>Router(config-router-af-interface)# hello-interval 10</pre>	Configures the hello interval for an EIGRP address family named configuration.
<b>Step 7</b>	<p><b>hold-time</b> <i>seconds</i></p> <p><b>Example:</b></p> <pre>Router(config-router-af-interface)# hold-time 50</pre>	Configures the hold time for an EIGRP address family named configuration.
<b>Step 8</b>	<p><b>end</b></p> <p><b>Example:</b></p> <pre>Router(config-router-af-interface)# end</pre>	Exits address family interface configuration mode and returns to privileged EXEC mode.

## Disabling Split Horizon Autonomous System Configuration

Split horizon controls the sending of EIGRP update and query packets. When split horizon is enabled on an interface, update and query packets are not sent for destinations for which this interface is the next hop. Controlling update and query packets in this manner reduces the possibility of routing loops.

By default, split horizon is enabled on all interfaces.

**SUMMARY STEPS**

1. **enable**
2. **configure terminal**
3. **interface** *slot / port*
4. **no ip split-horizon eigrp** *autonomous-system-number*
5. **end**

**DETAILED STEPS**

	Command or Action	Purpose
<b>Step 1</b>	<b>enable</b>  <b>Example:</b> Router> enable	Enables privileged EXEC mode. <ul style="list-style-type: none"> <li>• Enter your password if prompted.</li> </ul>
<b>Step 2</b>	<b>configure terminal</b>  <b>Example:</b> Router# configure terminal	Enters global configuration mode.
<b>Step 3</b>	<b>interface</b> <i>slot / port</i>  <b>Example:</b> Router(config)# interface gigabitethernet 0/1/1	Configures an interface and enters interface configuration mode.
<b>Step 4</b>	<b>no ip split-horizon eigrp</b> <i>autonomous-system-number</i>  <b>Example:</b> Router(config-if)# no ip split-horizon eigrp 101	Disables split horizon.
<b>Step 5</b>	<b>end</b>  <b>Example:</b> Router(config-if)# end	Exits interface configuration mode and returns to privileged EXEC mode.

**Disabling Split Horizon and Next-Hop-Self Named Configuration**

EIGRP will, by default, set the next-hop value to the local outbound interface address for routes that it is advertising, even when advertising those routes back from the same interface where it learned them. Perform this task to change this default to instruct EIGRP to use the received next hop value when advertising these routes. Disabling next-hop-self is primarily useful in Dynamic Multipoint VPN (DMVPN) spoke-to-spoke topologies.

By default, split horizon is enabled on all interfaces.

**SUMMARY STEPS**

1. **enable**
2. **configure terminal**
3. **router eigrp** *virtual-instance-name*
4. Do one of the following:
  - **address-family ipv4** [**multicast**] [**unicast**] [**vrf vrf-name**] **autonomous-system** *autonomous-system-number*
  - 
  - 
  - **address-family ipv6** [**unicast**] [**vrf vrf-name**] **autonomous-system** *autonomous-system-number*
5. **af-interface** {**default** | *interface-type interface-number*}
6. **no split-horizon**
7. **no next-hop-self**
8. **end**

**DETAILED STEPS**

	<b>Command or Action</b>	<b>Purpose</b>
<b>Step 1</b>	<b>enable</b>  <b>Example:</b> Router> enable	Enables privileged EXEC mode. <ul style="list-style-type: none"> <li>• Enter your password if prompted.</li> </ul>
<b>Step 2</b>	<b>configure terminal</b>  <b>Example:</b> Router# configure terminal	Enters global configuration mode.
<b>Step 3</b>	<b>router eigrp</b> <i>virtual-instance-name</i>  <b>Example:</b> Router(config)# router eigrp virtual-name1	Enables an EIGRP routing process and enters router configuration mode.
<b>Step 4</b>	Do one of the following: <ul style="list-style-type: none"> <li>• <b>address-family ipv4</b> [<b>multicast</b>] [<b>unicast</b>] [<b>vrf vrf-name</b>] <b>autonomous-system</b> <i>autonomous-system-number</i></li> <li>•</li> <li>•</li> <li>•</li> <li>• <b>address-family ipv6</b> [<b>unicast</b>] [<b>vrf vrf-name</b>] <b>autonomous-system</b> <i>autonomous-system-number</i></li> </ul>	Enters address family configuration mode to configure an EIGRP IPv4 or IPv6 routing instance.



	Command or Action	Purpose
	<p><b>Example:</b></p> <pre>Router(config-router)# address-family ipv4 autonomous-system 45000</pre> <p><b>Example:</b></p> <p>or</p> <p><b>Example:</b></p> <pre>Router(config-router)# address-family ipv6 autonomous-system 45000</pre>	
<b>Step 5</b>	<p><b>af-interface</b> { <b>default</b>   <i>interface-type interface-number</i> }</p> <p><b>Example:</b></p> <pre>Router(config-router-af)# af-interface gigabitethernet 0/0/1</pre>	Enters address family interface configuration mode and configures interface-specific EIGRP commands.
<b>Step 6</b>	<p><b>no split-horizon</b></p> <p><b>Example:</b></p> <pre>Router(config-router-af-interface)# no split-horizon</pre>	Disables EIGRP split horizon.
<b>Step 7</b>	<p><b>no next-hop-self</b></p> <p><b>Example:</b></p> <pre>Router(config-router-af-interface)# no next-hop-self</pre>	(Optional) Instructs an EIGRP router to use the received next hop rather than the local outbound interface address as the next hop.
<b>Step 8</b>	<p><b>end</b></p> <p><b>Example:</b></p> <pre>Router(config-router-af-interface)# end</pre>	Exits address family interface configuration mode and returns to privileged EXEC mode.

## Configuring EIGRP Stub Routing Autonomous System Configuration

Perform the following task to configure stub routing in an EIGRP autonomous system configuration:

### SUMMARY STEPS

1. **enable**
2. **configure terminal**
3. **router eigrp** *autonomous-system-number*
4. **network** *ip-address* [*wildcard-mask*]
5. **eigrp stub** [**receive-only**] [**leak-map** *name*] [**connected**] [**static**] [**summary**] [**redistributed**]
6. **end**
7. **show ip eigrp neighbors** [*interface-type* | *as-number* | **static** | **detail**]

## DETAILED STEPS

	Command or Action	Purpose
Step 1	<b>enable</b>  <b>Example:</b> Router> enable	Enables privileged EXEC mode. <ul style="list-style-type: none"> <li>• Enter your password if prompted.</li> </ul>
Step 2	<b>configure terminal</b>  <b>Example:</b> Router# configure terminal	Enters global configuration mode.
Step 3	<b>router eigrp <i>autonomous-system-number</i></b>  <b>Example:</b> Router(config)# router eigrp 1	Configures a remote or distribution router to run an EIGRP process and enters router configuration mode.
Step 4	<b>network <i>ip-address</i> [<i>wildcard-mask</i>]</b>  <b>Example:</b> Router(config-router)# network 172.16.0.0	Specifies the network address of the EIGRP distribution router.
Step 5	<b>eigrp stub [<i>receive-only</i>] [<i>leak-map name</i>] [<i>connected</i>] [<i>static</i>] [<i>summary</i>] [<i>redistributed</i>]</b>  <b>Example:</b> Router(config-router)# eigrp stub connected static	Configures a remote router as an EIGRP stub router.
Step 6	<b>end</b>  <b>Example:</b> Router(config-router)# end	Exits router configuration mode and returns to privileged EXEC mode.
Step 7	<b>show ip eigrp neighbors [<i>interface-type</i>   <i>as-number</i>   <i>static</i>   <i>detail</i>]</b>  <b>Example:</b> Router# show ip eigrp neighbors detail	(Optional) Verifies that a remote router has been configured as a stub router with EIGRP. <ul style="list-style-type: none"> <li>• Enter this command from the distribution router. The last line of the output displays the stub status of the remote or spoke router.</li> </ul>

## Configuring EIGRP Stub Routing Named Configuration

Perform the following task to configure stub routing in an EIGRP named configuration:

**SUMMARY STEPS**

1. **enable**
2. **configure terminal**
3. **router eigrp** *virtual-instance-name*
4. Do one of the following:
  - **address-family ipv4** [**multicast**] [**unicast**] [**vrf vrf-name**] **autonomous-system** *autonomous-system-number*
  - 
  - 
  - 
  - **address-family ipv6** [**unicast**] [**vrf vrf-name**] **autonomous-system** *autonomous-system-number*
5. **network** *ip-address* [**wildcard-mask**]
6. **eigrp stub** [**receive-only**] [**leak-map name**] [**connected**] [**static**] [**summary**] [**redistributed**]
7. **exit-address-family**
8. **end**
9. **show eigrp address-family** {**ipv4** | **ipv6**} [**vrf vrf-name**] [*autonomous-system-number*] [**multicast**] **neighbors**[**static**] [**detail**] [*interface-type interface-number*]

**DETAILED STEPS**

	Command or Action	Purpose
<b>Step 1</b>	<b>enable</b>  <b>Example:</b> Router> enable	Enables privileged EXEC mode. <ul style="list-style-type: none"> <li>• Enter your password if prompted.</li> </ul>
<b>Step 2</b>	<b>configure terminal</b>  <b>Example:</b> Router# configure terminal	Enters global configuration mode.
<b>Step 3</b>	<b>router eigrp</b> <i>virtual-instance-name</i>  <b>Example:</b> Router(config)# router eigrp virtual-name1	Enables an EIGRP routing process in global configuration mode and enters router configuration mode.
<b>Step 4</b>	Do one of the following: <ul style="list-style-type: none"> <li>• <b>address-family ipv4</b> [<b>multicast</b>] [<b>unicast</b>] [<b>vrf vrf-name</b>] <b>autonomous-system</b> <i>autonomous-system-number</i></li> <li>•</li> <li>•</li> <li>•</li> <li>• <b>address-family ipv6</b> [<b>unicast</b>] [<b>vrf vrf-name</b>] <b>autonomous-system</b> <i>autonomous-system-number</i></li> </ul>	Enters address family configuration mode to configure an EIGRP IPv4 or IPv6 routing instance.

	Command or Action	Purpose
	<p><b>Example:</b></p> <pre>Router(config-router)# address-family ipv4 autonomous-system 45000</pre> <p><b>Example:</b></p> <p>or</p> <p><b>Example:</b></p> <pre>Router(config-router)# address-family ipv6 autonomous-system 45000</pre>	
<b>Step 5</b>	<p><b>network</b> <i>ip-address</i> [<b>wildcard-mask</b>]</p> <p><b>Example:</b></p> <pre>Router(config-router-af)# network 172.16.0.0</pre>	Specifies the network address of the EIGRP distribution router.
<b>Step 6</b>	<p><b>eigrp stub</b> [<b>receive-only</b>] [<b>leak-map</b> <i>name</i>] [<b>connected</b>] [<b>static</b>] [<b>summary</b>] [<b>redistributed</b>]</p> <p><b>Example:</b></p> <pre>Router(config-router-af) eigrp stub leak-map map1</pre>	Configures a router as a stub using EIGRP.
<b>Step 7</b>	<p><b>exit-address-family</b></p> <p><b>Example:</b></p> <pre>Router(config-router-af)# exit-address-family</pre>	Exits address family configuration mode.
<b>Step 8</b>	<p><b>end</b></p> <p><b>Example:</b></p> <pre>Router(config-router)# end</pre>	Exits router configuration mode and returns to privileged EXEC mode.
<b>Step 9</b>	<p><b>show eigrp address-family</b> {<b>ipv4</b>   <b>ipv6</b>} [<b>vrf</b> <i>vrf-name</i>] [<i>autonomous-system-number</i>] [<b>multicast</b>] [<b>neighbors</b>]<b>[static]</b> [<b>detail</b>] [<i>interface-type interface-number</i>]</p> <p><b>Example:</b></p> <pre>Router# show eigrp address-family ipv4 neighbors detail</pre>	(Optional) Displays the neighbors that are discovered by EIGRP.

## Monitoring and Maintaining EIGRP Autonomous System Configuration

Perform the following steps to monitor and maintain an EIGRP autonomous system configuration:

**SUMMARY STEPS**

1. **enable**
2. **show ip eigrp** [vrf {vrf-name | \*}] [ autonomous-system-number] **accounting**
3. **show ip eigrp events** [starting-event-number ending-event-number] [type]
4. **show ip eigrp interfaces** [vrf {vrf-name | \*}] [autonomous-system-number] [type number] [detail]
5. **show ip eigrp** [vrf {vrf-name | \*}] [autonomous-system-number] **neighbors** [interface-type | static | detail]
6. **show ip eigrp** [vrf {vrf-name | \*}] [autonomous-system-number] **topology** [ip-address [mask]] | [name] [active | all-links | detail-links | pending | summary | zero-successors]
7. **show ip eigrp** [vrf {vrf-name | \*}] [autonomous-system-number] **traffic**

**DETAILED STEPS****Step 1****enable**

Enables privileged EXEC mode. Enter your password if prompted.

**Example:**

```
Router# enable
```

**Step 2****show ip eigrp** [vrf {vrf-name | \*}] [ autonomous-system-number] **accounting**

This command displays prefix accounting information for EIGRP processes. The following is sample output from the command:

**Example:**

```
Router# show ip eigrp vrf VRF1 accounting
EIGRP-IPv4 Accounting for AS(100)/ID(10.0.2.1) VRF(VRF1)
Total Prefix Count: 4 States: A-Adjacency, P-Pending, D-Down
State Address/Source Interface Prefix Restart Restart/
Count Count Reset(s)
P Redistributed ---- 0 3 211
A 10.0.1.2 Gi0/0 2 0 84
P 10.0.2.4 Se2/0 0 2 114
D 10.0.1.3 Gi0/0 0 3 0
```

**Step 3****show ip eigrp events** [starting-event-number ending-event-number] [type]

This command displays the EIGRP event log. The following is sample output from the command:

**Example:**

```
Router# show ip eigrp events
1 02:37:58.171 NSF stale rt scan, peer: 10.0.0.0
2 02:37:58.167 Metric set: 10.0.0.1/24 284700416
3 02:37:58.167 FC sat rdbmet/succmet: 284700416 0
4 02:37:58.167 FC sat nh/ndbmet: 10.0.0.2 284700416
5 02:37:58.167 Find FS: 10.0.0.0/24 284700416
6 02:37:58.167 Rcv update met/succmet: 284956416 284700416
7 02:37:58.167 Rcv update dest/nh: 10.0.0.0/24 10.0.0.1
8 02:37:58.167 Peer nsf restarted: 10.0.0.1 Tunnel0
9 02:36:38.383 Metric set: 10.0.0.0/24 284700416
10 02:36:38.383 RDB delete: 10.0.0.0/24 10.0.0.1
11 02:36:38.383 FC sat rdbmet/succmet: 284700416 0
12 02:36:38.383 FC sat nh/ndbmet: 0.0.0.0 284700416
```

**Step 4****show ip eigrp interfaces** [vrf {vrf-name | \*}] [autonomous-system-number] [type number] [detail]

This command displays information about interfaces that are configured for EIGRP. The following is sample output from the command:

**Example:**

```
Router# show ip eigrp interfaces
EIGRP-IPv4 Interfaces for AS(60)
Interface      Peers      Xmit Queue  Mean   Pacing Time  Multicast    Pending
                Un/Reliable SRTT      Un/Reliable Flow Timer   Routes
Gi0             0           0/0         0      11/434        0            0
Gi0             1           0/0        337     0/10          0            0
SE0:1.16        1           0/0         10     1/63          103           0
Tu0             1           0/0        330     0/16          0            0
```

**Step 5**

**show ip eigrp [vrf {vrf-name | \*}] [autonomous-system-number] neighbors [interface-type | static | detail]**

This command displays neighbors discovered by EIGRP. The following is sample output from this command:

**Example:**

```
Router# show ip eigrp neighbors
H  Address                Interface      Hold Uptime   SRTT    RTO  Q  Seq
                               (sec)        (ms)          Cnt  Num
0  10.1.1.2                 Gi0/0         13 00:00:03 1996  5000 0  5
2  10.1.1.9                 Gi0/0         14 00:02:24  206  5000 0  5
1  10.1.2.3                 Gi0/1         11 00:20:39  2202  5000 0  5
```

**Step 6**

**show ip eigrp [vrf {vrf-name | \*}] [autonomous-system-number] topology [ip-address [mask]] | [name] [active | all-links | detail-links | pending | summary | zero-successors]**

This command displays entries in the EIGRP topology table. The following is sample output from this command:

**Example:**

```
Router# show ip eigrp topology
EIGRP-IPv4 Topology Table for AS(1)/ID(10.0.0.1)
Codes: P - Passive, A - Active, U - Update, Q - Query, R - Reply,
       r - Reply status, s - sia status
P 10.0.0.0/8, 1 successors, FD is 409600
   via 10.0.0.1 (409600/128256), GigabitEthernet0/0
P 172.16.1.0/24, 1 successors, FD is 409600
   via 10.0.0.1 (409600/128256), GigabitEthernet0/0
P 10.0.0.0/8, 1 successors, FD is 281600
   via Summary (281600/0), Null0
P 10.0.1.0/24, 1 successors, FD is 281600
   via Connected, GigabitEthernet0/0
```

**Step 7**

**show ip eigrp [vrf {vrf-name | \*}] [autonomous-system-number] traffic**

This command displays the number of EIGRP packets sent and received. The following is sample output from the command:

**Example:**

```
Router# show ip eigrp traffic
EIGRP-IPv4 Traffic Statistics for AS(60)
Hello sent/received: 21429/2809
Updates sent/received: 22/17
Queries sent/received: 0/0
Replies sent/received: 0/0
Acks sent/received: 16/13
SIA-Queries sent/received: 0/0
SIA-Replies sent/received: 0/0
Hello Process ID: 204
PDM Process ID: 203
Socket Queue: 0/2000/2/0 (current/max/highest/drops)
Input Queue: 0/2000/2/0 (current/max/highest/drops)
```

## Monitoring and Maintaining EIGRP Named Configuration

Perform the following steps to monitor and maintain an EIGRP named configuration:

### SUMMARY STEPS

1. **enable**
2. **show eigrp address-family { ipv4 | ipv6 } [vrf vrf-name] [autonomous-system-number] [multicast] accounting**
3. **show eigrp address-family { ipv4 | ipv6 } [vrf vrf-name] [autonomous-system-number] [multicast] events[starting-event-number ending-event-number] [errmsg[starting-event-number ending-event-number]] [sia[starting-event-number ending-event-number]] [type]**
4. **show eigrp address-family { ipv4 | ipv6 } [vrf vrf-name] [autonomous-system-number] [multicast] interfaces [detail] [interface-type interface-number]**
5. **show eigrp address-family { ipv4 | ipv6 } [vrf vrf-name] [autonomous-system-number] [multicast] neighbors[static] [detail] [interface-type interface-number]**
6. **show eigrp address-family { ipv4 | ipv6 } [vrf vrf-name] [autonomous-system-number] [multicast] timers**
7. **show eigrp address-family { ipv4 | ipv6 } [vrf vrf-name] [autonomous-system-number] [multicast] topology [topology-name] [ip-address] [active] [all-links] [detail-links] [pending] [summary] [zero-successors] [route-type { connected | external | internal | local | redistributed | summary | vpn }]**
8. **show eigrp address-family { ipv4 | ipv6 } [vrf vrf-name] [autonomous-system-number] [multicast] traffic**
9. **show eigrp plugins [plugin-name] [detailed]**
10. **show eigrp protocols [vrf vrf-name]**

### DETAILED STEPS

#### Step 1

**enable**

Enables privileged EXEC mode. Enter your password if prompted.

#### Example:

```
Router# enable
```

#### Step 2

**show eigrp address-family { ipv4 | ipv6 } [vrf vrf-name] [autonomous-system-number] [multicast] accounting**

This command displays prefix accounting information for EIGRP processes. The following is sample output from the command:

#### Example:

```
Router# show eigrp address-family ipv4 22 accounting
EIGRP-IPv4 VR(saf) Accounting for AS(22)/ID(10.0.0.1)
Total Prefix Count: 3 States: A-Adjacency, P-Pending, D-Down
State Address/Source Interface Prefix Restart Restart/
Count Count Count Reset(s)
A 10.0.0.2 Gi0/0 2 0 0
```

```
P 10.0.2.4      Se2/0      0      2      114
D 10.0.1.3      Gi0/0      0      3      0
```

**Step 3** **show eigrp address-family {ipv4 | ipv6} [vrf vrf-name] [autonomous-system-number] [multicast] events[*starting-event-number ending-event-number*] [errmsg[*starting-event-number ending-event-number*]] [sia[*starting-event-number ending-event-number*]] [type]**

This command displays information about EIGRP address-family events. The following is sample output from the command:

**Example:**

```
Router# show eigrp address-family ipv4 3 events
Event information for AS 3:
1 15:37:47.015 Change queue emptied, entries: 1
2 15:37:47.015 Metric set: 10.0.0.0/24 307200
3 15:37:47.015 Update reason, delay: new if 4294967295
4 15:37:47.015 Update sent, RD: 10.0.0.0/24 4294967295
5 15:37:47.015 Update reason, delay: metric chg 4294967295
6 15:37:47.015 Update sent, RD: 10.0.0.0/24 4294967295
7 15:37:47.015 Route installed: 10.0.0.0/24 10.0.1.2
8 15:37:47.015 Route installing: 10.0.0.0/24 10.0.1.2
```

**Step 4** **show eigrp address-family {ipv4 | ipv6} [vrf vrf-name] [autonomous-system-number] [multicast] interfaces [detail] [interface-type interface-number]**

This command displays information about interfaces that are configured for EIGRP. The following is sample output from the command:

**Example:**

```
Router# show eigrp address-family ipv4 4453 interfaces
EIGRP-IPv4 VR(Virtual-name) Address-family Neighbors for AS(4453)
          Xmit Queue Mean Pacing Time Multicast Pending
Interface Peers Un/Reliable SRTT Un/Reliable Flow Timer Services
Se0        1      0/0      28      0/15      127        0
Se1        1      0/0      44      0/15      211        0
```

**Step 5** **show eigrp address-family {ipv4 | ipv6} [vrf vrf-name] [autonomous-system-number] [multicast] neighbors[static] [detail] [interface-type interface-number]**

This command displays the neighbors that are discovered by EIGRP. The following is sample output from the command:

**Example:**

```
Router# show eigrp address-family ipv4 4453 neighbors
EIGRP-IPv4 VR(Virtual-name) Address-family Neighbors for AS(4453)
Address          Interface          Hold Uptime  SRTT  RTO   Q    Seq
                (sec)              (ms) (ms)  Cnt   Num
172.16.81.28     GigabitEthernet1/1/1  13  0:00:41  0    11   4    20
172.16.80.28     GigabitEthernet0/0/1  14  0:02:01  0    10  12   24
172.16.80.31     GigabitEthernet0/1/1  12  0:02:02  0     4   5    20
```

**Step 6** **show eigrp address-family {ipv4 | ipv6} [vrf vrf-name] [autonomous-system-number] [multicast] timers**

This command displays information about EIGRP timers and expiration times. The following is sample output from the command:

**Example:**

```
Router# show eigrp address-family ipv4 4453 timers
EIGRP-IPv4 VR(Virtual-name) Address-family Timers for AS(4453)
Hello Process
Expiration Type
| 1.022 (parent)
| 1.022 Hello (Et0/0)
Update Process
```



```

Expiration Type
| 14.984 (parent)
| 14.984 (parent)
| 14.984 Peer holding
SIA Process
Expiration Type for Topo(base)
| 0.000 (parent)

```

**Step 7** **show eigrp address-family {ipv4 | ipv6} [vrf vrf-name] [autonomous-system-number] [multicast] topology [topology-name] [ip-address] [active] [all-links] [detail-links] [pending] [summary] [zero-successors] [route-type] {connected | external | internal | local | redistributed | summary | vpn}}**

This command displays entries in the EIGRP topology table. The following is sample output from the command:

**Example:**

```

Router# show eigrp address-family ipv4 4453 topology
EIGRP-IPv4 VR(Virtual-name) Topology Table for AS(4453)/ID(10.0.0.1)
Codes: P - Passive, A - Active, U - Update, Q - Query, R - Reply,
       r - Reply status, s - sia Status
P 10.17.17.0/24, 1 successors, FD is 409600
   via 10.10.10.2 (409600/128256), GigabitEthernet3/0/1
P 172.16.19.0/24, 1 successors, FD is 409600
   via 10.10.10.2 (409600/128256), GigabitEthernet3/0/1
P 192.168.10.0/24, 1 successors, FD is 281600
   via Connected, GigabitEthernet3/0/1
P 10.10.10.0/24, 1 successors, FD is 281600
   via Redistributed (281600/0)

```

**Step 8** **show eigrp address-family {ipv4 | ipv6} [vrf vrf-name] [autonomous-system-number] [multicast] traffic**

This command displays the number of EIGRP packets that are sent and received. The following is sample output from the command:

**Example:**

```

Router# show eigrp address-family ipv4 4453 traffic
EIGRP-IPv4 VR(virtual-name) Address-family Traffic Statistics for AS(4453)
  Hellos sent/received: 122/122
  Updates sent/received: 3/1
  Queries sent/received: 0/0
  Replies sent/received: 0/0
  Acks sent/received: 0/3
  SIA-Queries sent/received: 0/0
  SIA-Replies sent/received: 0/0
  Hello Process ID: 128
  PDM Process ID: 191
  Socket Queue: 0/2000/1/0 (current/max/highest/drops)
  Input Queue: 0/2000/1/0 (current/max/highest/drops)

```

**Step 9** **show eigrp plugins [plugin-name] [detailed]**

This command displays general information including the versions of the EIGRP protocol features that are currently running. The following is sample output from the command:

**Example:**

```

Router# show eigrp plugins
EIGRP feature plugins:::
  eigrp-release      : 5.00.00 : Portable EIGRP Release
                    : 19.00.00 : Source Component Release(rel5)
  igrp2              : 3.00.00 : Reliable Transport/Dual Database
  bfd                : 1.01.00 : BFD Platform Support
  mtr                 : 1.00.01 : Multi-Topology Routing(MTR)
  eigrp-pfr          : 1.00.01 : Performance Routing Support
  ipv4-af            : 2.01.01 : Routing Protocol Support
  ipv4-sf            : 1.01.00 : Service Distribution Support
  external-client    : 1.02.00 : Service Distribution Client Support
  ipv6-af            : 2.01.01 : Routing Protocol Support

```

```

ipv6-sf          : 1.01.00 : Service Distribution Support
snmp-agent       : 1.01.01 : SNMP/SNMPv2 Agent Support

```

**Step 10** `show eigrp protocols [vrf vrf-name]`

This command displays general information about EIGRP protocols that are currently running. The following is sample output from the command:

**Example:**

```

Router# show eigrp protocols
EIGRP-IPv4 Protocol for AS(10)
Metric weight K1=1, K2=0, K3=1, K4=0, K5=0
NSF-aware route hold timer is 240
Router-ID: 10.0.1.1
Topology : 0 (base)
Active Timer: 3 min
Distance: internal 90 external 170
Maximum path: 4
Maximum hopcount 100
Maximum metric variance 1
EIGRP-IPv4 Protocol for AS(5) VRF(VRF1)
Metric weight K1=1, K2=0, K3=1, K4=0, K5=0
NSF-aware route hold timer is 240
Router-ID: 10.1.2.1
Topology : 0 (base)
Active Timer: 3 min
Distance: internal 90 external 170
Maximum path: 4
Maximum hopcount 100
Maximum metric variance 1
Total Prefix Count: 0
Total Redist Count: 0

```

## Configuration Examples for EIGRP

- [Example Enabling EIGRP--Autonomous System Configuration, page 59](#)
- [Example Enabling EIGRP--Named Configuration, page 59](#)
- [Example Enabling EIGRP IPv6 VRF-Lite--Named Configuration, page 59](#)
- [Example EIGRP Parameters--Autonomous System Configuration, page 59](#)
- [Example EIGRP Parameters--Named Configuration, page 60](#)
- [Example EIGRP Redistribution--Autonomous System Configuration, page 60](#)
- [Example EIGRP Route Summarization--Autonomous System Configuration, page 60](#)
- [Example EIGRP Route Summarization--Named Configuration, page 61](#)
- [Example EIGRP Event Logging--Autonomous System Configuration, page 61](#)
- [Example EIGRP Event Logging--Named Configuration, page 61](#)
- [Example Equal and Unequal Cost Load Balancing--Autonomous System Configuration, page 62](#)
- [Example Equal and Unequal Cost Load Balancing--Named Configuration, page 62](#)
- [Example EIGRP Route Authentication--Autonomous System Configuration, page 62](#)
- [Example EIGRP Route Authentication--Named Configuration, page 63](#)
- [Example Adjusting the Interval Between Hello Packets and the Hold Time-- Autonomous System Configuration, page 64](#)
- [Example Adjusting the Interval Between Hello Packets and the Hold Time-- Named Configuration, page 65](#)

- [Example Disabling Split Horizon--Autonomous System Configuration, page 65](#)
- [Example Disabling Split Horizon and Next-Hop-Self--Named Configuration, page 65](#)
- [Example EIGRP Stub Routing--Autonomous System Configuration, page 65](#)
- [Example EIGRP Stub Routing--Named Configuration, page 67](#)

## Example Enabling EIGRP--Autonomous System Configuration

The following example shows how to configure EIGRP:

```
Router> enable
Router# configure terminal
Router(config)# router eigrp 1
Router(config-router)# network 172.16.0.0
```

## Example Enabling EIGRP--Named Configuration

The following example shows how to enable EIGRP named configuration:

```
Router> enable
Router# configure terminal
Router(config)# router eigrp virtual-name1
Router(config-router)# address-family ipv4 autonomous-system 45000
Router(config-router-af)# network 172.16.0.0
```

## Example Enabling EIGRP IPv6 VRF-Lite--Named Configuration

The following example shows how to enable EIGRP IPv6 VRF-lite feature:

```
Router> enable
Router# configure terminal
Router(config)# vrf definition vrf1
Router(config-vrf)# rd 100:1
Router(config-vrf)# address-family ipv6
Router(config-vrf-af)# exit
Router(config-vrf)# exit
Router(config)# router eigrp virtual-name1
Router(config-router)# address-family ipv6 vrf vrf1 autonomous-system 45000
Router(config-router-af)# network 172.16.0.0
```

## Example EIGRP Parameters--Autonomous System Configuration

The following example shows how to configure optional EIGRP autonomous system configuration parameters, including applying offsets to routing metrics, adjusting EIGRP metrics, and disabling automatic summarization:

```
Router> enable
Router# configure terminal
Router(config)# router eigrp 1
Router(config-router)# network 172.16.0.0
Router(config-router)# passive-interface
Router(config-router)# offset-list 21 in 10 ethernet 0

Router(config-router)# metric weights 0 2 0 2 0 0
Router(config-router)# no auto-summary
Router(config-router)# exit
```

## Example EIGRP Parameters--Named Configuration

The following example shows how to configure optional EIGRP named configuration parameters, including applying offsets to routing metrics, adjusting EIGRP metrics, and disabling automatic summarization:

```
Router> enable
Router# configure terminal
Router(config)# router eigrp virtual-name1
Router(config-router)# address-family ipv4 autonomous-system 45000
Router(config-router-af)# network 172.16.0.0
Router(config-router-af)# metric weights 0 2 0 2 0 0
Router(config-router-af)# af-interface ethernet0/0
Router(config-router-af-interface)# passive-interface
Router(config-router-af-interface)# bandwidth-percent 75
Router(config-router-af-interface)# exit-af-interface
Router(config-router-af-interface)# topology base
Router(config-router-af-topology)# offset-list 21 in 10 ethernet 0

Router(config-router-af-topology)# no auto-summary
Router(config-router-af-topology)# exit-af-topology
```

## Example EIGRP Redistribution--Autonomous System Configuration

The following example shows how to configure redistribution of non-EIGRP protocol metrics into EIGRP metrics and configure the EIGRP administrative distance in an EIGRP autonomous system configuration:

```
Router> enable
Router# configure terminal
Router(config)# router eigrp 1
Router(config-router)# network 172.16.0.0
Router(config-router)# redistribute rip
Router(config-router)# distance eigrp 80 130
Router(config-router)# default-metric 1000 100 250 100 1500
```

## Example EIGRP Route Summarization--Autonomous System Configuration

The following example shows how to configure route summarization on an interface and also configures the automatic summary feature for an EIGRP autonomous system configuration. This configuration causes EIGRP to summarize network 10.0.0.0 from the Ethernet interface 0 only.

```
Router> enable
Router# configure terminal
Router(config)# router eigrp 101
Router(config-router)# exit
Router(config)# interface ethernet0
Router(config-if)# ip summary-address eigrp 100 0.0.0.0 0.0.0.0
Router(config-if)# ip bandwidth-percent eigrp 209 75
```

**Note**

You should not use the **ip summary-address eigrp** summarization command to generate the default route (0.0.0.0) from an interface. This causes the creation of an EIGRP summary default route to the null 0 interface with an administrative distance of 5. The low administrative distance of this default route can cause this route to displace default routes learned from other neighbors from the routing table. If the default route learned from the neighbors is displaced by the summary default route, or if the summary route is the only default route present, all traffic destined for the default route will not leave the router, instead, this traffic will be sent to the null 0 interface, where it is dropped. The recommended way to send only the default route out of a given interface is to use a **distribute-list** command. You can configure this command to filter all outbound route advertisements sent out the interface with the exception of the default (0.0.0.0).

## Example EIGRP Route Summarization--Named Configuration

The following example shows how to configure route summarization on an interface and configure the automatic summary feature for an EIGRP named configuration. This configuration causes EIGRP to summarize network 192.168.0.0 from the Ethernet interface 0/0 only.

```
Router> enable
Router# configure terminal
Router(config)# router eigrp virtual-name1
Router(config-router)# address-family ipv4 autonomous-system 45000
Router(config-router-af)# af-interface ethernet 0/0
Router(config-router-af-interface)# summary-address 192.168.0.0 255.255.0.0
Router(config-router-af-interface)# exit-af-interface
Router(config-router-af)# topology base
Router(config-router-af-topology)# summary-metric 192.168.0.0/16 10000 10 255 1 1500
```

## Example EIGRP Event Logging--Autonomous System Configuration

The following example shows how to configure EIGRP event logging parameters, including setting the size of the EIGRP event log, for an EIGRP autonomous system configuration:

```
Router> enable
Router# configure terminal
Router(config)# router eigrp 1
Router(config-router)# eigrp event-log-size 5000
Router(config-router)# eigrp log-neighbor-changes
Router(config-router)# eigrp log-neighbor-warnings 300
```

## Example EIGRP Event Logging--Named Configuration

The following example shows how to configure EIGRP event logging parameters, including setting the size of the EIGRP event log, for an EIGRP named configuration:

```
Router> enable
Router# configure terminal
Router(config)# router eigrp virtual-name1
Router(config-router)# address-family ipv4 autonomous-system 45000
Router(config-router-af)# eigrp log-neighbor-warnings 300
Router(config-router-af)# eigrp log-neighbor-changes
Router(config-router-af)# topology base
Router(config-router-af-topology)# eigrp event-log-size 10000
```

## Example Equal and Unequal Cost Load Balancing--Autonomous System Configuration

The following example shows how to configure traffic distribution among routes, the maximum number of parallel routes, and load balancing in an EIGRP named configuration network:

```
Router> enable
Router# configure terminal
Router(config)# router eigrp 1
Router(config-router)# traffic-share balanced
Router(config-router)# maximum-paths 5
Router(config-router)# variance 1
```

## Example Equal and Unequal Cost Load Balancing--Named Configuration

The following example shows how to configure traffic distribution among routes, the maximum number of parallel routes, and load balancing in an EIGRP named configuration network:

```
Router> enable
Router# configure terminal
Router(config)# router eigrp virtual-name1
Router(config-router)# address-family ipv4 autonomous-system 45000
Router(config-router-af)# topology base
Router(config-router-af-topology)# traffic-share balanced
Router(config-router-af-topology)# maximum-paths 5
Router(config-router-af-topology)# variance 1
```

## Example EIGRP Route Authentication--Autonomous System Configuration

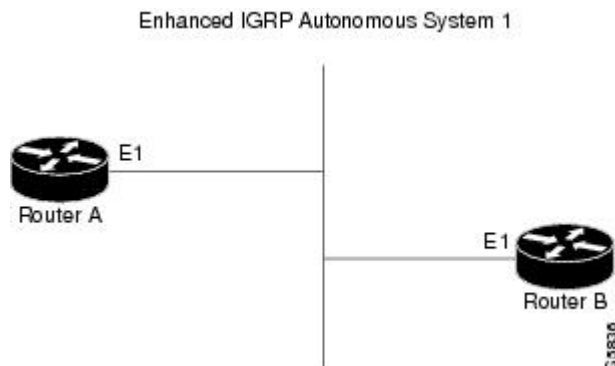
The following example shows how to enable MD5 authentication on EIGRP packets in autonomous system 1.

Router A will accept and attempt to verify the MD5 digest of any EIGRP packet with a key equal to 1. It will also accept a packet with a key equal to 2. All other MD5 packets will be dropped. Router A will send all EIGRP packets with key 2.

Router B will accept key 1 or key 2, and will use key 1 to send MD5 authentication, because key 1 is the first valid key off the key chain. Key 1 will no longer be valid to be used for sending after December 4, 2006. After this date, key 2 would be used to send MD5 authentication, because it is valid until January 4, 2007.

The figure below shows the scenario.

**Figure 7: EIGRP Route Authentication Scenario**



### Router A Configuration

```

Router> enable
Router(config)# configure terminal
Router(config)# router eigrp 1
Router(config-router)# exit
Router(config)# interface ethernet 1
Router(config-if)# ip authentication mode eigrp 1 md5
Router(config-if)# ip authentication key-chain eigrp 1 key1
Router(config-if)# exit
Router(config)# key chain key1
Router(config-keychain)# key 1
Router(config-keychain-key)# key-string 0987654321
Router(config-keychain-key)# accept-lifetime 04:00:00 Dec 4 2006 infinite
Router(config-keychain-key)# send-lifetime 04:00:00 Dec 4 2006 04:48:00 Dec 4 1996
Router(config-keychain-key)# exit
Router(config-keychain)# key 2
Router(config-keychain-key)# key-string 1234567890
Router(config-keychain-key)# accept-lifetime 04:00:00 Jan 4 2007 infinite
Router(config-keychain-key)# send-lifetime 04:45:00 Jan 4 2007 infinite

```

### Router B Configuration

```

Router> enable
Router(config)# configure terminal
Router(config)# router eigrp 1
Router(config-router)# exit
Router(config)# interface ethernet 1
Router(config-if)# ip authentication mode eigrp 1 md5
Router(config-if)# ip authentication key-chain eigrp 1 key2
Router(config-if)# exit
Router(config)# key chain key2
Router(config-keychain)# key 1
Router(config-keychain-key)# key-string 0987654321
Router(config-keychain-key)# accept-lifetime 04:00:00 Dec 4 2006 infinite
Router(config-keychain-key)# send-lifetime 04:00:00 Dec 4 2006 infinite
Router(config-keychain-key)# exit
Router(config-keychain)# key 2
Router(config-keychain-key)# key-string 1234567890
Router(config-keychain-key)# accept-lifetime 04:00:00 Jan 4 2007 infinite
Router(config-keychain-key)# send-lifetime 04:45:00 Jan 4 2007 infinite

```

## Example EIGRP Route Authentication--Named Configuration

The following example shows how to enable MD5 authentication on EIGRP packets in a named configuration.

Router A will accept and attempt to verify the MD5 digest of any EIGRP packet with a key equal to 1. It will also accept a packet with a key equal to 2. All other MD5 packets will be dropped. Router A will send all EIGRP packets with key 2.

Router B will accept key 1 or key 2, and will use key 1 to send MD5 authentication, because key 1 is the first valid key off the key chain. Key 1 will no longer be valid to be used for sending after December 4, 2006. After this date key 2 would be used to send MD5 authentication, because it is valid until January 4, 2007.

[Example EIGRP Route Authentication--Named Configuration, page 63](#) shows the scenario.

### Router A Configuration

```

Router> enable
Router# configure terminal
Router(config)# router eigrp virtual-name1
Router(config-router)# address-family ipv4 autonomous-system 45000
Router(config-router-af)# network 172.16.0.0

```

```

Router(config-router-af)# af-interface ethernet0/0
Router(config-router-af-interface)# authentication key-chain SITE1
Router(config-router-af-interface)# authentication mode md5
Router(config-router-af-interface)# exit-af-interface
Router(config-router-af)# exit-address-family
Router(config-router)# exit
Router(config)# key chain SITE1
Router(config-keychain)# key 1
Router(config-keychain-key)# key-string 0987654321
Router(config-keychain-key)# accept-lifetime 04:00:00 Dec 4 2006 infinite
Router(config-keychain-key)# send-lifetime 04:00:00 Dec 4 2006 infinite
Router(config-keychain-key)# exit
Router(config-keychain)# key 2
Router(config-keychain-key)# key-string 1234567890
Router(config-keychain-key)# accept-lifetime 04:00:00 Jan 4 2007 infinite
Router(config-keychain-key)# send-lifetime 04:45:00 Jan 4 2007 infinite

```

### Router B Configuration

```

Router> enable
Router# configure terminal
Router(config)# router eigrp virtual-name2
Router(config-router)# address-family ipv4 autonomous-system 45000
Router(config-router-af)# network 172.16.0.0
Router(config-router-af)# af-interface ethernet0/0
Router(config-router-af-interface)# authentication key-chain SITE2
Router(config-router-af-interface)# authentication mode md5
Router(config-router-af-interface)# exit-af-interface
Router(config-router-af)# exit-address-family
Router(config-router)# exit
Router(config)# key chain SITE2
Router(config-keychain)# key 1
Router(config-keychain-key)# key-string 0987654321
Router(config-keychain-key)# accept-lifetime 04:00:00 Jan 4 2007 infinite
Router(config-keychain-key)# send-lifetime 04:00:00 Dec 4 2006 infinite

```

The following example shows how to configure advanced SHA authentication with password password1 and several key strings that will be rotated as time passes:

```

!
key chain chain1
key 1
key-string securetraffic
accept-lifetime 04:00:00 Dec 4 2006 infinite
send-lifetime 04:00:00 Dec 4 2010 04:48:00 Dec 4 2008
key 2
key-string newertraffic
accept-lifetime 01:00:00 Dec 4 2010 infinite
send-lifetime 03:00:00 Dec 4 2010 infinite
exit
!
!
router eigrp virtual-name
address-family ipv6 autonomous-system 4453
af-interface ethernet 0
authentication mode hmac-sha-256 0 password1
authentication key-chain key1
!
!

```

## Example Adjusting the Interval Between Hello Packets and the Hold Time-- Autonomous System Configuration

```

Router> enable
Router# configure terminal
Router(config)# router eigrp 1
Router(config-router)# exit

```



```
Router(config)# interface Ethernet0/1
Router(config-if)# ip hello-interval eigrp 109 10
Router(config-if)# ip hold-time eigrp 109 40
```

## Example Adjusting the Interval Between Hello Packets and the Hold Time-- Named Configuration

The following example shows how to adjust the interval between hello packets and the hold time in an EIGRP named configuration:

```
Router> enable
Router# configure terminal
Router(config)# router eigrp virtual-name1
Router(config-router)# address-family ipv4 autonomous-system 45000
Router(config-router-af)# af-interface ethernet0/0
Router(config-router-af-interface)# hello-interval 10
Router(config-router-af-interface)# hold-time 50
```

## Example Disabling Split Horizon--Autonomous System Configuration

Split horizon is enabled on all interfaces by default. The following example shows how to disable split horizon for an EIGRP autonomous system configuration:

```
Router> enable
Router# configure terminal
Router(config)# router eigrp 1
Router(config-router)# exit
Router(config)# interface Ethernet0/1
Router(config-if)# no ip split-horizon eigrp 101
```

## Example Disabling Split Horizon and Next-Hop-Self--Named Configuration

Split horizon is enabled on all interfaces by default. The following example shows how to disable split horizon in an EIGRP named configuration.

EIGRP will, by default, set the next-hop value to the local outbound interface address for routes that it is advertising, even when advertising those routes back out of the same interface where it learned them. The following example shows how to change this default to instruct EIGRP to use the received next hop value when advertising these routes in an EIGRP named configuration. Disabling next-hop-self is primarily useful in DMVPN spoke-to-spoke topologies.

```
Router> enable
Router# configure terminal
Router(config)# router eigrp virtual-name1
Router(config-router)# address-family ipv4 autonomous-system 45000
Router(config-router-af)# af-interface ethernet0/0
Router(config-router-af-interface)# no split-horizon
Router(config-router-af-interface)# no next-hop-self
```

## Example EIGRP Stub Routing--Autonomous System Configuration

A router that is configured as a stub with the **eigrp stub** command shares connected and summary routing information with all neighbor routers by default. Six keywords can be used with the **eigrp stub** command to modify this behavior:

- **connected**
- **leak-map**

- **receive-only**
- **redistributed**
- **static**
- **summary**

This section provides configuration examples for all forms of the **eigrp stub** command for an EIGRP autonomous system configuration.

#### **eigrp stub Command: Example**

In the following example, the **eigrp stub** command is used to configure the router as a stub that advertises connected and summary routes:

```
Router(config)# router eigrp 1
Router(config-router)# network 10.0.0.0
Router(config-router)# eigrp stub
```

#### **eigrp stub connected static Command: Example**

In the following example, the **eigrp stub** command is issued with the **connected** and **static** keywords to configure the router as a stub that advertises connected and static routes (sending summary routes will not be permitted):

```
Router(config)# router eigrp 1
Router(config-router)# network 10.0.0.0
Router(config-router)# eigrp stub connected static
```

#### **eigrp stub leak-map Command: Example**

In the following example, the **eigrp stub** command is issued with the **leak-map name** keyword and argument pair to configure the router to reference a leak map that identifies routes that would have been suppressed:

```
Router(config)# router eigrp
Router(config-router)# network 10.0.0.0
Router(config-router) eigrp stub leak-map map1
```

#### **eigrp stub receive-only Command: Example**

In the following example, the **eigrp stub** command is issued with the **receive-only** keyword to configure the router as a receive-only neighbor (connected, summary, and static routes will not be sent):

```
Router(config)# router eigrp 1
Router(config-router)# network 10.0.0.0
Router(config-router)# eigrp stub receive-only
```

#### **eigrp stub redistributed Command: Example**

In the following example, the **eigrp stub** command is issued with the **redistributed** keyword to configure the router to advertise other protocols and autonomous systems:

```
Router(config)# router eigrp 1
Router(config-router)# network 10.0.0.0
Router(config-router)# eigrp stub redistributed
```

## Example EIGRP Stub Routing--Named Configuration

A router that is configured as a stub with the **eigrp stub** command shares connected and summary routing information with all neighbor routers by default. Six keywords can be used with the **eigrp stub** command to modify this behavior:

- **connected**
- **leak-map**
- **receive-only**
- **redistributed**
- **static**
- **summary**

This section provides configuration examples for all forms of the **eigrp stub** command for an EIGRP named configuration.

### eigrp stub Command: Example

In the following example, the **eigrp stub** command is used to configure the router as a stub that advertises connected and summary routes:

```
Router(config)# router eigrp virtual-name1
Router(config-router)# address-family ipv4 autonomous-system 4453
Router(config-router-af)# network 10.0.0.0
Router(config-router-af) eigrp stub
```

### eigrp stub connected static Command: Example

In the following named configuration example, the **eigrp stub** command is issued with the **connected** and **static** keywords to configure the router as a stub that advertises connected and static routes (sending summary routes will not be permitted):

```
Router(config)# router eigrp virtual-name1
Router(config-router)# address-family ipv4 autonomous-system 4453
Router(config-router-af)# network 10.0.0.0
Router(config-router-af) eigrp stub connected static
```

### eigrp stub leak-map Command: Example

In the following named configuration example, the **eigrp stub** command is issued with the **leak-map** *name* keyword and argument pair to configure the router to reference a leak map that identifies routes that would normally have been suppressed:

```
Router(config)# router eigrp virtual-name1
Router(config-router)# address-family ipv4 autonomous-system 4453
Router(config-router-af)# network 10.0.0.0
Router(config-router-af) eigrp stub leak-map map1
```

### eigrp stub receive-only Command: Example

In the following named configuration example, the **eigrp stub** command is issued with the **receive-only** keyword to configure the router as a receive-only neighbor (connected, summary, and static routes will not be sent):

```
Router(config)# router eigrp virtual-name1
Router(config-router)# address-family ipv4 autonomous-system 4453
```

```
Router(config-router-af)# network 10.0.0.0
Router(config-router-af)# eigrp stub receive-only
```

### eigrp stub redistributed Command: Example

In the following named configuration example, the **eigrp stub** command is issued with the **redistributed** keyword to configure the router to advertise other protocols and autonomous systems:

```
Router(config)# router eigrp virtual-name1
Router(config-router)# address-family ipv4 autonomous-system 4453
Router(config-router-af)# network 10.0.0.0
Router(config-router-af)# eigrp stub redistributed
```

## Additional References

### Related Documents

Related Topic	Document Title
Cisco IOS commands	<a href="#">Cisco IOS Master Command List, All Releases</a>
EIGRP commands	<i>Cisco IOS IP Routing: EIGRP Command Reference</i>
EIGRP FAQ	<a href="#">EIGRP Frequently Asked Questions</a>
EIGRP L2/L3 API and Tunable Metric for Mobile Adhoc Networks feature	Mobile Ad Hoc Networks for Router-to-Radio Communications module of the <i>Cisco IOS IP Mobility Configuration Guide</i>
EIGRP message authentication	<a href="#">EIGRP Message Authentication Configuration Example</a>
EIGRP Technology Support	<a href="#">Enhanced Interior Gateway Routing Protocol</a>
EIGRP Technology White Papers	<a href="#">Enhanced Interior Gateway Routing Protocol</a>
IPv6 and EIGRP	Implementing EIGRP for IPv6 module of the <i>Cisco IOS IPv6 Configuration Guide</i>
Protocol-independent features that work with EIGRP	Configuring IP Routing Protocol-Independent Features module of the <i>Cisco IOS IP Routing : Protocol-Independent Configuration Guide</i>
Service Advertisement Framework	<i>Cisco IOS Service Advertisement Framework Configuration Guide</i>
Service Advertisement Framework commands	<i>Cisco IOS Service Advertisement Framework Command Reference</i>

**Standards**

Standard	Title
FIPS PUB 180-2	<i>SECURE HASH STANDARD (SHS)</i>

**MIBs**

MIB	MIBs Link
No new or modified MIBs are supported by this feature, and support for existing standards has not been modified by this feature.	To locate and download MIBs for selected platforms, Cisco software releases, and feature sets, use Cisco MIB Locator found at the following URL:  <a href="http://www.cisco.com/go/mibs">http://www.cisco.com/go/mibs</a>

**RFCs**

RFC	Title
RFC 1321	<i>The MD5 Message-Digest Algorithm</i>
RFC 2104	<i>HMAC: Keyed-Hashing for Message Authentication</i>

**Technical Assistance**

Description	Link
The Cisco Support and Documentation website provides online resources to download documentation, software, and tools. Use these resources to install and configure the software and to troubleshoot and resolve technical issues with Cisco products and technologies. Access to most tools on the Cisco Support and Documentation website requires a Cisco.com user ID and password.	<a href="http://www.cisco.com/cisco/web/support/index.html">http://www.cisco.com/cisco/web/support/index.html</a>

## Feature Information for EIGRP

The following table provides release information about the feature or features described in this module. This table lists only the software release that introduced support for a given feature in a given software release train. Unless noted otherwise, subsequent releases of that software release train also support that feature.

Use Cisco Feature Navigator to find information about platform support and Cisco software image support. To access Cisco Feature Navigator, go to [www.cisco.com/go/cfn](http://www.cisco.com/go/cfn). An account on Cisco.com is not required.

**Table 3: Feature Information for EIGRP Features**

Feature Name	Releases	Feature Information
EIGRP IPv6 VRF-Lite	15.1(1)S 15.1(4)M	<p>The EIGRP IPv6 VRF-Lite feature provides EIGRP IPv6 support for multiple VRFs. EIGRP for IPv6 can operate in the context of a VRF. The EIGRP IPv6 VRF-Lite feature provides separation between routing and forwarding, providing an additional level of security because no communication between devices belonging to different VRFs is allowed unless it is explicitly configured. The EIGRP IPv6 VRF-Lite feature simplifies the management and troubleshooting of traffic belonging to a specific VRF.</p> <p>The EIGRP IPv6 VRF-Lite feature is available only in EIGRP named configurations.</p> <p>There are no new or modified commands for this feature.</p>
EIGRP/SAF HMAC-SHA-256 Authentication	15.1(2)S	<p>EIGRP packets will be authenticated using HMAC-SHA-256 message authentication codes. The HMAC algorithm takes as inputs the data to authenticate (that is, the EIGRP packet) and a shared secret key that is known to both the sender and the receiver, and outputs a 256-bit hash that will be used for authentication. If the hash value provided by the sender matches the hash value calculated by the receiver, the packet will be accepted by the receiver; otherwise it will be discarded.</p> <p>The following command was introduced or modified by this feature:</p> <p><b>authentication mode (EIGRP) .</b></p>

Feature Name	Releases	Feature Information
Enhanced Interior Gateway Routing Protocol	11.2(1) 12.2(33)SRA 15.0(1)M 12.2(33)SRE 12.2(33)XNE 15.0(1)S	<p>EIGRP is an enhanced version of the IGRP developed by Cisco. EIGRP uses the same distance vector algorithm and distance information as IGRP. However, the convergence properties and the operating efficiency of EIGRP have improved substantially over IGRP, and IGRP is obsolete.</p> <p>The following commands were introduced or modified by this feature:</p> <p><b>auto-summary (EIGRP) , clear ip eigrp neighbors, default-information, default-metric (EIGRP), distance (EIGRP), eigrp log-neighbor-changes, eigrp log-neighbor-warnings, eigrp router-id, ip bandwidth-percent eigrp, ip hello-interval eigrp, ip hold-time eigrp, ip next-hop-self eigrp, ip split-horizon eigrp, ip summary-address eigrp, metric maximum-hops, metric weights (EIGRP), neighbor (EIGRP), network (EIGRP), offset-list (EIGRP), router eigrp, set metric (EIGRP), show ip eigrp accounting, show ip eigrp interfaces, show ip eigrp neighbors, show ip eigrp topology, show ip eigrp traffic, show ip eigrp vrf accounting, show ip eigrp vrf interfaces, show ip eigrp vrf neighbors, show ip eigrp vrf topology, show ip eigrp vrf traffic, summary-metric, timers active-time, traffic-share balanced, variance (EIGRP).</b></p> <p>In Cisco IOS Release 15.0(1)M, 12.2(33)SRE, and 12.2(33)XNE, the following commands were introduced or modified: <b>address-family (EIGRP), af-interface,</b></p>

Feature Name	Releases	Feature Information
		<p>autonomous-system (EIGRP), auto-summary (EIGRP), bandwidth percent, clear eigrp address-family neighbors, clear ip eigrp neighbors, debug eigrp address-family neighbor, debug eigrp address-family notifications, default-information, default-metric (EIGRP), distance (EIGRP), eigrp event-log-size, eigrp log-neighbor-changes, eigrp log-neighbor-warnings, eigrp router-id, exit-address-family, exit-af-interface, exit-af-topology, hello-interval, hold-time, match extcommunity, metric maximum-hops, metric weights, next-hop-self, offset-list (EIGRP), passive-interface (EIGRP), router eigrp, show eigrp address-family accounting, show eigrp address-family events, show eigrp address-family interfaces, show eigrp address-family neighbors, show eigrp address-family timers, show eigrp address-family topology, show eigrp address-family traffic, show eigrp plugins, show eigrp protocols, show eigrp tech-support, show ip eigrp accounting, show ip eigrp events, show ip eigrp interfaces, show ip eigrp neighbors, show ip eigrp topology, show ip eigrp traffic, shutdown (address-family), split-horizon (EIGRP), summary-address (EIGRP), timers active-time, traffic-share balanced, variance (EIGRP)</p> <p>In Cisco IOS Release 15.0(1)M, 12.2(33)SRE, and 12.2(33)XNE, the following commands were replaced: <b>clear ip eigrp vrf neighbors, eigrp interface, log-neighbor-warnings, show ip</b></p>



Feature Name	Releases	Feature Information
EIGRP Stub Routing	12.0(7)T 12.0(15)S 12.2(33)SRE 12.2(33)XNE 15.0(1)M 15.0(1)S	<p data-bbox="1154 289 1487 443"><b>eigrp vrf accounting, show ip eigrp vrf interfaces, show ip eigrp vrf neighbors, show ip eigrp vrf topology, show ip eigrp vrf traffic.</b></p> <p data-bbox="1154 472 1511 947">The EIGRP Stub Routing feature improves network stability, reduces resource utilization, and simplifies stub router configuration. Stub routing is commonly used in a hub-and-spoke network topology. In a hub-and-spoke network, one or more end (stub) networks are connected to a remote router (the spoke) that is connected to one or more distribution routers (the hub). The remote router is adjacent only to one or more distribution routers.</p> <p data-bbox="1154 961 1500 1052">The following command was introduced by this feature: <b>eigrp stub.</b></p>
IP Enhanced IGRP Route Authentication	11.3(1) 12.2(33)SRA 12.2(33)SRE 12.2(33)XNE 15.0(1)M 15.0(1)S	<p data-bbox="1154 1087 1500 1241">The IP Enhanced IGRP route authentication feature provides MD5 authentication of routing updates from the EIGRP routing protocol.</p> <p data-bbox="1154 1255 1511 1478">The following commands were introduced or modified by this feature: <b>accept-lifetime, ip authentication key-chain eigrp, ip authentication mode eigrp, key chain, key, key-string, send-lifetime.</b></p> <p data-bbox="1154 1493 1500 1717">In Cisco IOS Release 15.0(1)M, 12.2(33)SRE, and 12.2(33)XNE, the following commands were introduced or modified: <b>authentication mode (EIGRP), authentication key-chain (EIGRP).</b></p>

Cisco and the Cisco Logo are trademarks of Cisco Systems, Inc. and/or its affiliates in the U.S. and other countries. A listing of Cisco's trademarks can be found at [www.cisco.com/go/trademarks](http://www.cisco.com/go/trademarks). Third party trademarks mentioned are the property of their respective owners. The use of the word partner does not imply a partnership relationship between Cisco and any other company. (1005R)

Any Internet Protocol (IP) addresses and phone numbers used in this document are not intended to be actual addresses and phone numbers. Any examples, command display output, network topology diagrams, and other figures included in the document are shown for illustrative purposes only. Any use of actual IP addresses or phone numbers in illustrative content is unintentional and coincidental.