



## **RADIUS Configurations Configuration Guide, Cisco IOS Release 15M&T**

### **Americas Headquarters**

Cisco Systems, Inc.  
170 West Tasman Drive  
San Jose, CA 95134-1706  
USA  
<http://www.cisco.com>  
Tel: 408 526-4000  
800 553-NETS (6387)  
Fax: 408 527-0883



## **CONTENTS**

### **ACL Default Direction 1**

Finding Feature Information 1

Prerequisites for ACL Default Direction 1

Information About ACL Default Direction 2

The radius-server attribute 11 direction default Command 2

Benefits of ACL Default Direction 2

How to Configure ACL Default Direction 2

Configuring the ACL Default Direction from RADIUS via Attribute 11 Filter-Id 2

Verifying the ACL Default Direction from RADIUS via Attribute 11 Filter-Id 3

Configuration Examples for ACL Default Direction 4

Default Direction of Filters via RADIUS Attribute 11 Filter-Id Example 4

RADIUS User Profile with Filter-Id Example 4

Additional References 4

Feature Information for ACL Default Direction 6

### **Attribute Screening for Access Requests 9**

Finding Feature Information 9

Prerequisites for Attribute Screening for Access Requests 9

Restrictions for Attribute Screening for Access Requests 9

Information About Attribute Screening for Access Requests 10

Configuring an NAS to Filter Attributes in Outbound Access Requests 10

How to Configure Attribute Screening for Access Requests 10

Configuring Attribute Screening for Access Requests 10

Configuring a Router to Support Downloadable Filters 12

Troubleshooting Tips 13

Monitoring and Maintaining Attribute Filtering for Access Requests 14

Configuration Examples for Attribute Filtering for Access Requests 14

Attribute Filtering for Access Requests Example 14

Attribute Filtering User Profile Example 15

debug radius Command Example 15

Additional References	15
Feature Information for Attribute Screening for Access Requests	16
<b>Enable Multilink PPP via RADIUS for Preauthentication User</b>	<b>19</b>
Finding Feature Information	19
Prerequisites for Enable Multilink PPP via RADIUS for Preauthentication User	19
Information About the Enable Multilink PPP via RADIUS for Preauthentication User Feature	20
How MLP via RADIUS Works	20
Roles of the L2TP Access Server and L2TP Network Server	20
New Vendor-Specific Attributes	20
Verifying MLP Negotiation via RADIUS in Preauthentication	21
Configuration Examples for Enable Multilink PPP via RADIUS for Preauthentication User	21
LAC for MLP Configuration Example	22
LAC RADIUS Profile for Preauthentication Example	22
LNS for MLP Configuration Example	22
LNS RADIUS Profile Example	23
Additional References	23
Feature Information for Enable Multilink PPP via RADIUS for Preauthentication User	24
Glossary	25
<b>Enhanced Test Command</b>	<b>27</b>
Finding Feature Information	27
Restrictions for the Enhanced Test Command	27
How to Configure the Enhanced Test Command	27
Configuring a User Profile and Associating it with the RADIUS Record	28
Verifying the Enhanced Test Command Configuration	29
Configuration Example for Enhanced Test Command	29
User Profile Associated With a test aaa group command Example	29
Additional References	30
Feature Information for Enhanced Test Command	31
Glossary	32
<b>Offload Server Accounting Enhancement</b>	<b>33</b>
Finding Feature Information	33
Prerequisites	33
Information About Offload Server Accounting Enhancement	34
How to Configure the Offload Server Accounting Enhancement	34
Configuring Unique Session IDs	34

Configuring Offload Server to Synchronize with NAS Clients	35
Verifying Offload Server Accounting	35
Configuration Examples for the Offload Server Accounting Enhancement	35
Unique Session ID Configuration Example	36
Offload Server Synchronization with NAS Clients Example	36
Additional References	36
Feature Information for Offload Server Accounting Enhancement	37
Glossary	38
<b>Tunnel Authentication via RADIUS on Tunnel Terminator</b>	<b>41</b>
Finding Feature Information	41
Prerequisites for Tunnel Authentication via RADIUS on Tunnel Terminator	41
Restrictions for Tunnel Authentication via RADIUS on Tunnel Terminator	42
Information About Tunnel Authentication via RADIUS on Tunnel Terminator	42
New RADIUS Attributes	43
How to Configure Tunnel Authentication via RADIUS on Tunnel Terminator	43
Configuring the LNS or LAC for Remote RADIUS Tunnel Authentication and Authorization	44
Verifying Remote RADIUS Tunnel Authentication and Authorization Configurations	45
Verifying Remote RADIUS Tunnel Authentication and Authorization Configurations	46
Configuration Examples for Tunnel Authentication via RADIUS on Tunnel Terminator	47
L2TP Network Server Configuration Example	47
RADIUS User Profile for Remote RADIUS Tunnel Authentication Example	47
Additional References	47
Feature Information for Tunnel Authentication via RADIUS on Tunnel Terminator	49
Glossary	49
<b>Local AAA Server</b>	<b>51</b>
Finding Feature Information	51
Prerequisites for Local AAA Server	51
Information About Local AAA Server	51
Local Authorization Attributes Overview	52
Local AAA Attribute Support	52
AAA Attribute Lists	52
Converting from RADIUS Format to Cisco IOS AAA Format	52
Validation of Attributes	53
How to Configure Local AAA Server	53

Defining a AAA Attribute List	53
Defining a Subscriber Profile	55
Monitoring and Troubleshooting a Local AAA Server	56
Configuration Examples for Local AAA Server	58
Local AAA Server Example	58
Mapping from the RADIUS Version of a Particular Attribute to the Cisco IOS AAA Version Example	59
Additional References	60
Related Document	60
Standards	60
MIBs	60
RFCs	61
Technical Assistance	61
Feature Information for Local AAA Server	61
<b>Per-User QoS via AAA Policy Name</b>	<b>63</b>
Finding Feature Information	63
Prerequisites for Per-User QoS via AAA Policy Name	63
Information About Per-User QoS via AAA Policy Name	63
VSAs Added for Per-User QoS via AAA Policy Name	64
How to Configure Per-User QoS via AAA Policy Name	64
Monitoring and Maintaining Per-User QoS via AAA Policy Name	64
Configuration Example for Per-User QoS via AAA Policy Name	65
Additional References	65
Feature Information for Per-User QoS via AAA Policy Name	66
Glossary	67
<b>RADIUS Progress Codes</b>	<b>69</b>
Finding Feature Information	69
Prerequisites for RADIUS Progress Codes	69
Information About RADIUS Progress Codes	69
How to Configure RADIUS Progress Codes	70
How to Verify Attribute 196	70
Troubleshooting Tips	71
Additional References	72
Feature Information for RADIUS Progress Codes	73
Glossary	73
<b>RADIUS Timeout Set During Pre-Authentication</b>	<b>75</b>

Finding Feature Information	75
Prerequisites for the RADIUS Timeout Set During Pre-Authentication Feature	75
Information About the RADIUS Timeout Set During Pre-Authentication Feature	76
RADIUS Attribute 27 and the PPP Authentication Phase	76
How to Configure the RADIUS Timeout Set During Pre-Authentication Feature	76
Additional References	76
Feature Information for RADIUS Timeout Set During Pre-Authentication	77
<b>Per IP Subscriber DHCP Triggered RADIUS Accounting</b>	<b>79</b>
Finding Feature Information	79
Prerequisites for Per IP Subscriber DHCP Triggered RADIUS Accounting	79
Restrictions for Per IP Subscriber DHCP Triggered RADIUS Accounting	80
Information About Per IP Subscriber DHCP Triggered RADIUS Accounting	80
Per IP Subscriber DHCP Triggered RADIUS Accounting Network Topology	80
Benefits of Per IP Subscriber DHCP Triggered RADIUS Accounting	81
Per IP Subscriber Triggered RADIUS Accounting Behavior	81
How to Configure Per IP Subscriber DHCP Triggered RADIUS Accounting	82
Configuring Method Lists for Per IP Subscriber DHCP Triggered RADIUS Accounting	82
Configuration Examples for Per IP Subscriber DHCP Triggered RADIUS Accounting	84
Subinterface RADIUS Accounting Configuration Example	84
Additional References	84
Feature Information for Per IP Subscriber DHCP Triggered RADIUS Accounting	86





## ACL Default Direction

---

The ACL Default Direction feature allows the filter direction to be changed on the server (where the filter direction is not specified) to inbound packets (packets coming into the network) only.

- [Finding Feature Information, page 1](#)
- [Prerequisites for ACL Default Direction, page 1](#)
- [Information About ACL Default Direction, page 2](#)
- [How to Configure ACL Default Direction, page 2](#)
- [Configuration Examples for ACL Default Direction, page 4](#)
- [Additional References, page 4](#)
- [Feature Information for ACL Default Direction, page 6](#)

## Finding Feature Information

Your software release may not support all the features documented in this module. For the latest caveats and feature information, see [Bug Search Tool](#) and the release notes for your platform and software release. To find information about the features documented in this module, and to see a list of the releases in which each feature is supported, see the feature information table at the end of this module.

Use Cisco Feature Navigator to find information about platform support and Cisco software image support. To access Cisco Feature Navigator, go to [www.cisco.com/go/cfn](http://www.cisco.com/go/cfn). An account on Cisco.com is not required.

## Prerequisites for ACL Default Direction

Before you can change the default direction of filters from RADIUS, you must perform the following tasks:

- Configure your network access server (NAS) for authentication, authorization, and accounting (AAA) and to accept incoming calls.

For more information, refer to the AAA chapters of the *Cisco IOS Security Configuration Guide: Securing User Services*, Release 12.4T and the *Cisco IOS Dial Technologies Configuration Guide*, Release 12.4T .

- Create a filter on your NAS.

For more information, see *Cisco IOS IP Addressing Services Configuration Guide* , Release 12.4T.

- Add a filter definition for a RADIUS user; for example, Filter-Id = “myfilter”.



## Information About ACL Default Direction

- [The radius-server attribute 11 direction default Command, page 2](#)
- [Benefits of ACL Default Direction, page 2](#)

## The radius-server attribute 11 direction default Command

The **radius-server attribute 11 direction default** command allows you to change the default direction of filters for your ACLs via RADIUS. (RADIUS attribute 11 (Filter-Id) indicates the name of the filter list for the user.) Enabling this command allows you to change the filter direction to inbound--which stops traffic from entering a router, and reduces resource consumption--rather than keeping the outbound default direction, where filtering occurs only as the traffic is about to leave the network.

## Benefits of ACL Default Direction

The ACL Default Direction feature allows you to change the default direction, which is outbound, of filters for your ACLs to inbound via the **radius-server attribute 11 direction default** command.

## How to Configure ACL Default Direction

- [Configuring the ACL Default Direction from RADIUS via Attribute 11 Filter-Id, page 2](#)
- [Verifying the ACL Default Direction from RADIUS via Attribute 11 Filter-Id, page 3](#)

## Configuring the ACL Default Direction from RADIUS via Attribute 11 Filter-Id

Perform this task to configure the default direction of filters from RADIUS via attribute 11.

### SUMMARY STEPS

1. **enable**
2. **configure terminal**
3. **radius-server attribute 11 direction default [inbound | outbound]**

### DETAILED STEPS

Command or Action	Purpose
<b>Step 1</b> <b>enable</b>  <b>Example:</b>  Router> enable	Enables privileged EXEC mode. <ul style="list-style-type: none"> <li>• Enter your password if prompted.</li> </ul>

Command or Action	Purpose
<b>Step 2</b> <code>configure terminal</code>  <b>Example:</b> <pre>Router# configure terminal</pre>	Enters global configuration mode.
<b>Step 3</b> <code>radius-server attribute 11 direction default [inbound   outbound]</code>  <b>Example:</b> <pre>Router(config)# radius-server attribute 11 direction default inbound</pre>	Specifies the default direction of filters from RADIUS to inbound or outbound.

## Verifying the ACL Default Direction from RADIUS via Attribute 11 Filter-Id

Perform this task to verify the default direction of filters from RADIUS and to verify that RADIUS attribute 11 is being sent in access accept requests.

### SUMMARY STEPS

1. `enable`
2. `more system:running-config`
3. `debug radius`

### DETAILED STEPS

Command or Action	Purpose
<b>Step 1</b> <code>enable</code>  <b>Example:</b> <pre>Router&gt; enable</pre>	Enables privileged EXEC mode. <ul style="list-style-type: none"> <li>• Enter your password if prompted.</li> </ul>
<b>Step 2</b> <code>more system:running-config</code>  <b>Example:</b> <pre>Router# more system:running-config</pre>	Displays the contents of the current running configuration file.

Command or Action	Purpose
<b>Step 3</b> <code>debug radius</code>  <b>Example:</b>  Router# <code>debug radius</code>	Displays information associated with RADIUS. The output of this command shows whether attribute 11 is being sent in access accept requests.

## Configuration Examples for ACL Default Direction

- [Default Direction of Filters via RADIUS Attribute 11 Filter-Id Example, page 4](#)
- [RADIUS User Profile with Filter-Id Example, page 4](#)

### Default Direction of Filters via RADIUS Attribute 11 Filter-Id Example

The following example shows how to configure RADIUS attribute 11 to change the default direction of filters. In this example, the filtering is applied to inbound packets only.

```
radius-server attribute 11 direction default inbound
```

### RADIUS User Profile with Filter-Id Example

The following is an example of a RADIUS user profile (Merit Daemon format) that includes RADIUS attribute 11 (Filter-Id):

```
client Password = "password1"
  Service-Type = Framed,
  Framed-Protocol = PPP,
  Filter-Id = "myfilter.out"
```

The RADIUS user profile shown in this example produces the following reply from the NAS:

```
RADIUS: Send to unknown id 79 10.51.13.4:1645, Access-Request, len 85
RADIUS: authenticator 84 D3 B5 7D C2 5B 70 AD - 1E 5C 56 E8 3A 91 D0 6E
RADIUS: User-Name          [1] 8 "client"
RADIUS: CHAP-Password      [3] 19 *
RADIUS: NAS-Port           [5] 6 20030
RADIUS: NAS-Port-Type      [61] 6 ISDN [2]
RADIUS: Called-Station-Id [30] 6 "4321"
RADIUS: Calling-Station-Id [31] 6 "1234"
RADIUS: Service-Type       [6] 6 Framed [2]
RADIUS: NAS-IP-Address     [4] 6 10.1.73.74
RADIUS: Received from id 79 10.51.13.4:1645, Access-Accept, len 46
RADIUS: authenticator 9C 6C 66 E2 F1 42 D6 4B - C1 7D D4 5E 9D 09 BB A1
RADIUS: Service-Type       [6] 6 Framed [2]
RADIUS: Framed-Protocol    [7] 6 PPP [1]
RADIUS: Filter-Id         [11] 14
RADIUS: 6D 79 66 69 6C 74 65 72 2E 6F 75 74 [myfilter.out]
```

## Additional References

The following sections provide references related to the ACL Default Direction feature.

**Related Documents**

<b>Related Topic</b>	<b>Document Title</b>
Cisco IOS Dial Technologies configuration	<i>Cisco IOS Dial Technologies Configuration Guide, Release 12.4T</i>
Cisco IOS security configuration	<i>Cisco IOS Security Configuration Guide: Securing User Services, Release 12.4T</i>
Cisco IOS security commands	<i>Cisco IOS Security Command Reference</i>
Configuring IP services	<i>Cisco IOS IP Addressing Services Configuration Guide , Release 12.4T.</i>

**Standards**

<b>Standard</b>	<b>Title</b>
No new or modified standards are supported by this feature, and support for existing standards has not been modified by this feature.	--

**MIBs**

<b>MIB</b>	<b>MIBs Link</b>
No new or modified MIBs are supported by this feature, and support for existing MIBs has not been modified by this feature.	To locate and download MIBs for selected platforms, Cisco IOS releases, and feature sets, use Cisco MIB Locator found at the following URL: <a href="http://www.cisco.com/go/mibs">http://www.cisco.com/go/mibs</a>

**RFCs**

<b>RFC</b>	<b>Title</b>
RFC 2865	<i>Remote Authentication Dial-In User Service (RADIUS)</i>

**Technical Assistance**

Description	Link
<p>The Cisco Support website provides extensive online resources, including documentation and tools for troubleshooting and resolving technical issues with Cisco products and technologies.</p> <p>To receive security and technical information about your products, you can subscribe to various services, such as the Product Alert Tool (accessed from Field Notices), the Cisco Technical Services Newsletter, and Really Simple Syndication (RSS) Feeds.</p> <p>Access to most tools on the Cisco Support website requires a Cisco.com user ID and password.</p>	<a href="http://www.cisco.com/techsupport">http://www.cisco.com/techsupport</a>

## Feature Information for ACL Default Direction

The following table provides release information about the feature or features described in this module. This table lists only the software release that introduced support for a given feature in a given software release train. Unless noted otherwise, subsequent releases of that software release train also support that feature.

Use Cisco Feature Navigator to find information about platform support and Cisco software image support. To access Cisco Feature Navigator, go to [www.cisco.com/go/cfn](http://www.cisco.com/go/cfn). An account on Cisco.com is not required.

**Table 1**      **Feature Information for ACL Default Direction**

Feature Name	Releases	Feature Information
ACL Default Direction	12.2(4)T 12.2(28)SB 12.2(31)SB3	<p>The ACL Default Direction feature allows the filter direction to be changed on the server (where the filter direction is not specified) to inbound packets (packets coming into the network) only.</p> <p>In Cisco IOS Release 12.2(4)T, this feature was introduced.</p> <p>In Cisco IOS Release 12.2(28)SB, this feature was integrated.</p> <p>In Cisco IOS Release 12.2(31)SB3, this feature was integrated.</p> <p>The following command was introduced: <b>radius-server attribute 11 direction default.</b></p>

Cisco and the Cisco logo are trademarks or registered trademarks of Cisco and/or its affiliates in the U.S. and other countries. To view a list of Cisco trademarks, go to this URL: [www.cisco.com/go/trademarks](http://www.cisco.com/go/trademarks). Third-party trademarks mentioned are the property of their respective owners. The use of the word partner does not imply a partnership relationship between Cisco and any other company. (1110R)

Any Internet Protocol (IP) addresses and phone numbers used in this document are not intended to be actual addresses and phone numbers. Any examples, command display output, network topology diagrams, and other figures included in the document are shown for illustrative purposes only. Any use of actual IP addresses or phone numbers in illustrative content is unintentional and coincidental.





# Attribute Screening for Access Requests

---

The Attribute Screening for Access Requests feature allows you to configure your network access server (NAS) to filter attributes in outbound Access Requests to the RADIUS server for purposes of authentication or authorization.

- [Finding Feature Information, page 9](#)
- [Prerequisites for Attribute Screening for Access Requests, page 9](#)
- [Restrictions for Attribute Screening for Access Requests, page 9](#)
- [Information About Attribute Screening for Access Requests, page 10](#)
- [How to Configure Attribute Screening for Access Requests, page 10](#)
- [Configuration Examples for Attribute Filtering for Access Requests, page 14](#)
- [Additional References, page 15](#)
- [Feature Information for Attribute Screening for Access Requests, page 16](#)

## Finding Feature Information

Your software release may not support all the features documented in this module. For the latest caveats and feature information, see [Bug Search Tool](#) and the release notes for your platform and software release. To find information about the features documented in this module, and to see a list of the releases in which each feature is supported, see the feature information table at the end of this module.

Use Cisco Feature Navigator to find information about platform support and Cisco software image support. To access Cisco Feature Navigator, go to [www.cisco.com/go/cfn](http://www.cisco.com/go/cfn). An account on Cisco.com is not required.

## Prerequisites for Attribute Screening for Access Requests

- You must be familiar with configuring attribute lists.

## Restrictions for Attribute Screening for Access Requests

- Attributes 1 (Username), 2 (User-Password), and 3 (Chap-Password) cannot be filtered.



## Information About Attribute Screening for Access Requests

- [Configuring an NAS to Filter Attributes in Outbound Access Requests, page 10](#)

### Configuring an NAS to Filter Attributes in Outbound Access Requests

The Attribute Screening for Access Requests feature allows you to configure your NAS to filter attributes in outbound Access Requests to the RADIUS server for purposes of authentication or authorization. The filters can be configured on the NAS, or they can be downloaded via downloadable vendor-specific attributes (VSAs) from the authentication, authorization, and accounting (AAA) server.

The following are some examples of the downloadable VSAs:

```
Cisco: Cisco-Avpair="ppp-authen-type=chap"
Cisco: Cisco-Avpair="ppp-authen-list=group 1"
Cisco: Cisco-Avpair="ppp-author-list=group 1"
Cisco: Cisco-Avpair="vpdn:tunnel-id=B53"
Cisco: Cisco-Avpair="vpdn:ip-addresses=10.0.58.35"
```



#### Note

You must be aware of which attributes you want to filter. Filtering certain key attributes can result in authentication failure (for example, attribute 60 should not be filtered).

## How to Configure Attribute Screening for Access Requests

- [Configuring Attribute Screening for Access Requests, page 10](#)
- [Configuring a Router to Support Downloadable Filters, page 12](#)
- [Monitoring and Maintaining Attribute Filtering for Access Requests, page 14](#)

### Configuring Attribute Screening for Access Requests

To configure the attribute screening for access requests, perform the following steps.

or

```
accounting [request | reply] [ accept | reject ] listname
```

**SUMMARY STEPS**

1. **enable**
2. **configure terminal**
3. **radius-server attribute list** *listname*
4. **attribute** *value1* [ *value2* [ *value3* ... ] ]
5. **aaa group server radius** *group-name*
6. Do one of the following:
  - **authorization** [request | reply][accept | reject ] *listname*
  - 
  - 
  - **accounting** [request | reply] [ accept | reject ] *listname*

**DETAILED STEPS**

Command or Action	Purpose
<p><b>Step 1</b> <b>enable</b></p> <p><b>Example:</b></p> <pre>Router&gt; enable</pre>	<p>Enables privileged EXEC mode.</p> <ul style="list-style-type: none"> <li>• Enter your password if prompted.</li> </ul>
<p><b>Step 2</b> <b>configure terminal</b></p> <p><b>Example:</b></p> <pre>Router# configure terminal</pre>	<p>Enters global configuration mode.</p>
<p><b>Step 3</b> <b>radius-server attribute list</b> <i>listname</i></p> <p><b>Example:</b></p> <pre>Router (config)# radius-server attribute list attrlist</pre>	<p>Defines an attribute list.</p>
<p><b>Step 4</b> <b>attribute</b> <i>value1</i> [ <i>value2</i> [ <i>value3</i> ... ] ]</p> <p><b>Example:</b></p> <pre>Router (config)# attribute 6-10, 12</pre>	<p>Adds attributes to an accept or reject list.</p>
<p><b>Step 5</b> <b>aaa group server radius</b> <i>group-name</i></p> <p><b>Example:</b></p> <pre>Router (config)# aaa group server radius rad1</pre>	<p>Applies the attribute list to the AAA server group and enters server-group configuration mode.</p>

Command or Action	Purpose
<p><b>Step 6</b> Do one of the following:</p> <ul style="list-style-type: none"> <li>• <b>authorization</b> [request   reply][accept   reject ] <i>listname</i></li> <li>•</li> <li>• <b>accounting</b> [request   reply] [ accept   reject ] <i>listname</i></li> </ul> <p><b>Example:</b></p> <pre>Router (config-sg-radius)# authorization request accept attrlist</pre> <p><b>Example:</b></p> <p><b>Example:</b></p> <p><b>Example:</b></p> <pre>Router (config-sg-radius)# accounting request accept attrlist</pre>	<p>Filters attributes in outbound Access Requests to the RADIUS server for purposes of authentication or authorization.</p> <ul style="list-style-type: none"> <li>• The <b>request</b> keyword defines filters for outgoing authorization Access Requests.</li> <li>• The <b>reply</b> keyword defines filters for incoming authorization Accept and Reject packets and for outgoing accounting requests.</li> </ul>

## Configuring a Router to Support Downloadable Filters

Perform this task to configure your router to support downloadable filters.

### SUMMARY STEPS

1. **enable**
2. **configure terminal**
3. **aaa authorization template**
4. **aaa authorization network default group radius**
5. **radius-server attribute list** *list-name*
6. **attribute** *value1* [*value2* [*value3...*]]

## DETAILED STEPS

Command or Action	Purpose
<b>Step 1</b> <code>enable</code>  <b>Example:</b> <pre>Router&gt; enable</pre>	Enables privileged EXEC mode. <ul style="list-style-type: none"> <li>Enter your password if prompted.</li> </ul>
<b>Step 2</b> <code>configure terminal</code>  <b>Example:</b> <pre>Router# configure terminal</pre>	Enters global configuration mode.
<b>Step 3</b> <code>aaa authorization template</code>  <b>Example:</b> <pre>Router (config)# aaa authorization template</pre>	Enables usage of a local or remote customer template on the basis of Virtual Private Network (VPN) routing and forwarding (VRF).
<b>Step 4</b> <code>aaa authorization network default group radius</code>  <b>Example:</b> <pre>Router (config)# aaa authorization network default group radius</pre>	Sets parameters that restrict user access to a network.
<b>Step 5</b> <code>radius-server attribute list list-name</code>  <b>Example:</b> <pre>Router (config)# radius-server attribute list attlist</pre>	Defines an accept or reject list name.
<b>Step 6</b> <code>attribute value1 [value2 [value3...]]</code>  <b>Example:</b> <pre>Router (config)# attribute 10-14, 24</pre>	Adds attributes to an accept or reject list.

- [Troubleshooting Tips, page 13](#)

## Troubleshooting Tips

If attribute filtering is not working, ensure that the attribute list is properly defined.

## Monitoring and Maintaining Attribute Filtering for Access Requests

To monitor and maintain attribute filtering, you can use the **debug radius** command.

### SUMMARY STEPS

1. **enable**
2. **debug radius**

### DETAILED STEPS

	Command or Action	Purpose
Step 1	<b>enable</b>  <b>Example:</b> Router> enable	Enables privileged EXEC mode. <ul style="list-style-type: none"> <li>• Enter your password if prompted.</li> </ul>
Step 2	<b>debug radius</b>  <b>Example:</b> Router# debug radius	Displays information associated with RADIUS, including filtering information.

## Configuration Examples for Attribute Filtering for Access Requests

- [Attribute Filtering for Access Requests Example, page 14](#)
- [Attribute Filtering User Profile Example, page 15](#)
- [debug radius Command Example, page 15](#)

### Attribute Filtering for Access Requests Example

The following example shows that the attributes 30-31 that are defined in “all-attr” will be rejected in all outbound Access Request messages:

```

aaa group server radius ras
 server 172.19.192.238 auth-port 1745 acct-port 1746
 authorization request reject all-attr
!
.
.
.
radius-server attribute list all-attr
 attribute 30-31
!
.
.
.

```

## Attribute Filtering User Profile Example

The following is a sample user profile after attribute filtering has been configured for Access Requests:

```
cisco.com Password = "cisco"
Service-Type = Framed,
Framed-Protocol = PPP,
Cisco:Cisco-Avpair = :1:"rad-serv=172.19.192.87 key rad123",
Cisco:Cisco-Avpair = :1:"rad-serv-filter=authorization request reject range1",
Cisco:Cisco-Avpair = :1:"rad-serv-filter=accounting request reject range1",
Cisco:Cisco-Avpair = "ppp-authen-type=chap"
Cisco:Cisco-Avpair = "ppp-authen-list=group 1",
Cisco:Cisco-Avpair = "ppp-author-list=group 1",
Cisco:Cisco-Avpair = "ppp-acct-list=start-stop group 1",
Cisco:Cisco-Avpair = "vpdn:tunnel-id=B53",
Cisco:Cisco-Avpair = "vpdn:tunnel-type=l2tp",
Cisco:Cisco-Avpair = "vpdn:ip-addresses=10.0.58.35",
Cisco:Cisco-Avpair = "vpdn:l2tp-tunnel-password=cisco"
user2@cisco.com
Service-Type = Outbound,
Cisco:Cisco-Avpair = "vpdn:tunnel-id=B53",
Cisco:Cisco-Avpair = "vpdn:tunnel-type=l2tp",
Cisco:Cisco-Avpair = "vpdn:ip-addresses=10.0.58.35",
Cisco:Cisco-Avpair = "vpdn:l2tp-tunnel-password=cisco"
```

When a session for user2@cisco.com “comes up” at the Layer 2 Tunneling Protocol (L2TP) Network Server (LNS)--as is shown above--because the **aaa authorization template** command has been configured, a RADIUS request is sent to the server for Cisco.com. The server then sends an Access Accept message if authentication is successful, along with the VSAs that are configured as part of the Cisco.com profile. If filters are configured as part of the Cisco.com profile, these filters will be parsed and applied to the RADIUS requests for user2@cisco.com.

In the above profile example, filter range1 has been applied to the authorization and accounting requests.

## debug radius Command Example

If the attribute you are trying to filter is rejected, you will see an **debug radius** output statement similar to the following:

```
RADIUS: attribute 31 rejected
```

If you try to filter an attribute that cannot be filtered, you will see an output statement similar to the following:

```
RADIUS: attribute 1 cannot be rejected
```

## Additional References

The following sections provide references related to Attribute Filtering for Access Requests.

### Related Documents

Related Topic	Document Title
Configuring RADIUS	Configuring RADIUS feature document.
Security commands	<i>Cisco IOS Security Command Reference</i>

Related Topic	Document Title
RADIUS attribute lists	RADIUS Attribute Screening feature document.

Standards	
Standards	Title
None	--

MIBs	
MIBs	MIBs Link
None	To locate and download MIBs for selected platforms, Cisco IOS releases, and feature sets, use Cisco MIB Locator found at the following URL:  <a href="http://www.cisco.com/go/mibs">http://www.cisco.com/go/mibs</a>

RFCs	
RFCs	Title
None	--

Technical Assistance	
Description	Link
<p>The Cisco Support website provides extensive online resources, including documentation and tools for troubleshooting and resolving technical issues with Cisco products and technologies.</p> <p>To receive security and technical information about your products, you can subscribe to various services, such as the Product Alert Tool (accessed from Field Notices), the Cisco Technical Services Newsletter, and Really Simple Syndication (RSS) Feeds.</p> <p>Access to most tools on the Cisco Support website requires a Cisco.com user ID and password.</p>	<a href="http://www.cisco.com/techsupport">http://www.cisco.com/techsupport</a>

## Feature Information for Attribute Screening for Access Requests

The following table provides release information about the feature or features described in this module. This table lists only the software release that introduced support for a given feature in a given software

release train. Unless noted otherwise, subsequent releases of that software release train also support that feature.

Use Cisco Feature Navigator to find information about platform support and Cisco software image support. To access Cisco Feature Navigator, go to [www.cisco.com/go/cfn](http://www.cisco.com/go/cfn). An account on Cisco.com is not required.

**Table 2** Feature Information for Attribute Screening for Access Requests

Feature Name	Releases	Feature Information
Attribute Screening for Access Requests	12.3(3)B 12.3(7)T 12.2(28)SB 12.2(33)SRC	<p>The Attribute Screening for Access Requests feature allows a network access server (NAS) to be configured to filter attributes in outbound Access Requests to the RADIUS server for purposes of authentication or authorization.</p> <p>In 12.3(3)B, this feature was introduced.</p> <p>This feature was integrated into Cisco IOS Release 12.3(7)T</p> <p>This feature was integrated into Cisco IOS Release 12.2(28)SB.</p> <p>This feature was integrated into Cisco IOS Release 12.2(33)SRC.</p> <p>The following commands were introduced or modified by this feature: <b>authorization (server-group)</b>.</p>

Cisco and the Cisco logo are trademarks or registered trademarks of Cisco and/or its affiliates in the U.S. and other countries. To view a list of Cisco trademarks, go to this URL: [www.cisco.com/go/trademarks](http://www.cisco.com/go/trademarks). Third-party trademarks mentioned are the property of their respective owners. The use of the word partner does not imply a partnership relationship between Cisco and any other company. (1110R)

Any Internet Protocol (IP) addresses and phone numbers used in this document are not intended to be actual addresses and phone numbers. Any examples, command display output, network topology diagrams, and other figures included in the document are shown for illustrative purposes only. Any use of actual IP addresses or phone numbers in illustrative content is unintentional and coincidental.







# Enable Multilink PPP via RADIUS for Preauthentication User

The Enable Multilink PPP via RADIUS for Preauthentication User feature allows an administrator to selectively enable and disable Multilink PPP (MLP) negotiation for different users through RADIUS vendor-specific attribute (VSA) `preauth:ppp-multilink=1` to the preauthentication profile.

- [Finding Feature Information](#), page 19
- [Prerequisites for Enable Multilink PPP via RADIUS for Preauthentication User](#), page 19
- [Information About the Enable Multilink PPP via RADIUS for Preauthentication User Feature](#), page 20
- [Configuration Examples for Enable Multilink PPP via RADIUS for Preauthentication User](#), page 21
- [Additional References](#), page 23
- [Feature Information for Enable Multilink PPP via RADIUS for Preauthentication User](#), page 24
- [Glossary](#), page 25

## Finding Feature Information

Your software release may not support all the features documented in this module. For the latest caveats and feature information, see [Bug Search Tool](#) and the release notes for your platform and software release. To find information about the features documented in this module, and to see a list of the releases in which each feature is supported, see the feature information table at the end of this module.

Use Cisco Feature Navigator to find information about platform support and Cisco software image support. To access Cisco Feature Navigator, go to [www.cisco.com/go/cfn](http://www.cisco.com/go/cfn). An account on Cisco.com is not required.

## Prerequisites for Enable Multilink PPP via RADIUS for Preauthentication User

Before enabling MLP via RADIUS VSA `preauth:ppp-multilink=1`, you should perform the following tasks:

- Enable the network access server (NAS) to recognize and use VSAs as defined by RADIUS IETF attribute 26 by using the **`radius-server vsa send`** command.

For more information about using VSAs, refer to the section “Configuring Router to Use Vendor-Specific RADIUS Attributes” section of the Configuring RADIUS feature module.

- Enable preauthentication.

For information about configuring preauthentication, refer to the section “Configuring AAA Preauthentication ” section of the Configuring RADIUS feature module.

## Information About the Enable Multilink PPP via RADIUS for Preauthentication User Feature

The Multilink PPP via RADIUS for Preauthentication User feature is enabled by configuring the **ppp multilink** command on an interface, but then this command enables MLP negotiation for all connections and users on that interface; that is, you cannot selectively enable or disable MLP negotiation for specific connections and users on an interface.



### Note

To enable this feature, the **ppp multilink** command should not be configured on the interface; this command disables MLP by default. If the **ppp multilink** command is already configured on the interface, the attribute “preauth:ppp-multilink=1” will not override this command.

- [How MLP via RADIUS Works, page 20](#)
- [New Vendor-Specific Attributes, page 20](#)
- [Verifying MLP Negotiation via RADIUS in Preauthentication, page 21](#)

## How MLP via RADIUS Works

Because MLP parameters are negotiated at the time of link control protocol (LCP) negotiation, RADIUS VSA preauth:ppp-multilink=1 should only be a part of preauthentication user authorization. You should add this VSA to the preauthentication profile of the user to enable MLP. Thus, MLP will be enabled only for preauthentication users whose profiles contain this VSA; MLP will be disabled for all other users. If the MLP VSA is received during PPP user authorization (as opposed to preauthentication user authorization), it will be too late to negotiate MLP, and MLP will not be enabled.

When this VSA is received during preauthentication user authorization, MLP negotiation for the user is enabled. MLP is enabled when the VSA value is 1. All attribute values other than 1 are ignored.

- [Roles of the L2TP Access Server and L2TP Network Server, page 20](#)

### Roles of the L2TP Access Server and L2TP Network Server

With this feature, you do not need to configure MLP on the interface of the L2TP access concentrator (LAC); during preauthentication user authorization, the LAC will selectively choose to enable MLP for preauthentication users who receive preauth:ppp-multilink=1. On the L2TP network server (LNS), you can control the maximum number of links allowed in the multilink bundle by sending RADIUS VSA multilink:max-links=n during PPP user authorization.

## New Vendor-Specific Attributes

This feature introduces the following new VSAs:

- Cisco-AVpair = preauth:ppp-multilink=1

Turns on MLP on the interface and is applied to the preauthentication profile.

- Cisco-AVpair = multilink:max-links=n

Restricts the maximum number of links that a user can have in a multilink bundle and is used with the service=ppp attribute. The range of “n” is from 1 to 255.

- Cisco-AVpair = multilink:min-links=1

Sets the minimum number of links for MLP. The range of “n” is from 0 to 255.

- Cisco-AVpair = multilink:load-threshold=n

Sets the load threshold for the caller for which additional links are added or deleted from the multilink bundle. If the load exceeds the specified value, links are added; if the load drops below the specified value, links are deleted. This attribute is used with the service=ppp attribute. The range of “n” is from 1 to 255.



**Note**

RADIUS VSAs multilink:max-links, multilink:min-links, and multilink:load-threshold serve the same purpose as TACACS+ per-user attributes, max-links, min-links, and load-threshold respectively.

## Verifying MLP Negotiation via RADIUS in Preauthentication

To display bundle information for the MLP bundles, use the **show ppp multilink EXEC** command.

```
Router# show ppp multilink
Virtual-Access1, bundle name is mlpuser
  Bundle up for 00:00:15
  Dialer interface is Serial0:23
  0 lost fragments, 0 reordered, 0 unassigned
  0 discarded, 0 lost received, 1/255 load
  0x0 received sequence, 0x0 sent sequence
  Member links: 1 (max 7, min 1)
    Serial0:22, since 00:00:15, no frags rcvd
```

The table below describes the significant fields shown when MLP is enabled.

**Table 3** *show ppp multilink Field Descriptions*

Field	Description
Virtual-Access1	Multilink bundle virtual interface.
Bundle	Configured name of the multilink bundle.
Dialer Interface is Serial0:23	Name of the interface that dials the calls.
1/255 load	Load on the link in the range 1/255 to 255/255. (255/255 is a 100% load.)
Member links: 1	Number of child interfaces.

## Configuration Examples for Enable Multilink PPP via RADIUS for Preauthentication User

- [LAC for MLP Configuration Example, page 22](#)
- [LAC RADIUS Profile for Preauthentication Example, page 22](#)
- [LNS for MLP Configuration Example, page 22](#)
- [LNS RADIUS Profile Example, page 23](#)

## LAC for MLP Configuration Example

The following example is a sample configuration that can be used to configure a LAC for MLP via RADIUS:

```
! Enable preauthentication
aaa preauth
  group radius
  dnis required

! Enable VPDN
vpdn enable
!
vpdn-group 1
  request-dialin
  protocol l2tp
  dnis 56118
  initiate-to ip 10.0.1.22
  local name lac-router

! Don't need to configure multilink on the interface
! Multilink will be enabled by "ppp-multilink" attribute
interface Serial0:23
  ip address 15.0.1.7 255.0.0.0
  encapsulation ppp
  dialer-group 1
  isdn switch-type primary-5ess
  isdn calling-number 56118
  peer default ip address pool pool1
  no cdp enable
  ppp authentication chap
```

## LAC RADIUS Profile for Preauthentication Example

The following example shows a LAC RADIUS profile for a preauthentication user who has applied the preauth:ppp-multilink=1 VSA:

```
56118 Password = "cisco"
Service-Type = Outbound,
Framed-Protocol = PPP,
Framed-MTU = 1500,
Cisco-Avpair = "preauth:auth-required=1",
Cisco-Avpair = "preauth:auth-type=chap",
Cisco-Avpair = "preauth:username=dnis:56118",
Cisco-Avpair = "preauth:ppp-multilink=1"
```

## LNS for MLP Configuration Example

The following example is a sample configuration that can be used to configure a LNS to limit the number of links in a MLP bundle:

```
! Enable VPDN
vpdn enable
!
vpdn-group 1
  accept-dialin
  protocol any
  virtual-template 1
```

```

terminate-from hostname lac-router
local name lns-router
!
! Configure multilink on interface
interface Virtual-Template 1
 ip unnumbered Ethernet 0/0
 ppp authentication chap
 ppp multilink

```

## LNS RADIUS Profile Example

The following example shows a LNS RADIUS profile for specifying the maximum number of links in a multilink bundle. The following multilink VSAs should be specified during PPP user authorization.

```

mascot password = "cisco"
      Service-Type = Framed,
      Framed-Protocol = PPP,
      Cisco-Avpair = "multilink:max-links=7"
      Cisco-Avpair = "multilink:min-links=1"
      Cisco-Avpair = "multilink:load-threshold=128"

```

## Additional References

The following sections provide references related to the Enable Multilink PPP via RADIUS for Preauthentication User feature.

### Related Documents

Related Topic	Document Title
RADIUS	Configuring RADIUS feature module.
Dial Technology	<i>Cisco IOS Dial Technologies Configuration Guide</i> , Release 12.4T
RADIUS Attributes	RADIUS Attributes Overview and RADIUS IETF Attributes feature module.
TACACS+ Attributes	TACACS+ Attribute-Value Pairs feature module.

### Standards

Standard	Title
None	--

### MIBs

MIB	MIBs Link
None	To locate and download MIBs for selected platforms, Cisco IOS releases, and feature sets, use Cisco MIB Locator found at the following URL: <a href="http://www.cisco.com/go/mibs">http://www.cisco.com/go/mibs</a>

**RFCs**

RFC	Title
No new or modified RFCs are supported.	--

**Technical Assistance**

Description	Link
<p>The Cisco Support website provides extensive online resources, including documentation and tools for troubleshooting and resolving technical issues with Cisco products and technologies.</p> <p>To receive security and technical information about your products, you can subscribe to various services, such as the Product Alert Tool (accessed from Field Notices), the Cisco Technical Services Newsletter, and Really Simple Syndication (RSS) Feeds.</p> <p>Access to most tools on the Cisco Support website requires a Cisco.com user ID and password.</p>	<a href="http://www.cisco.com/techsupport">http://www.cisco.com/techsupport</a>

## Feature Information for Enable Multilink PPP via RADIUS for Preauthentication User

The following table provides release information about the feature or features described in this module. This table lists only the software release that introduced support for a given feature in a given software release train. Unless noted otherwise, subsequent releases of that software release train also support that feature.

Use Cisco Feature Navigator to find information about platform support and Cisco software image support. To access Cisco Feature Navigator, go to [www.cisco.com/go/cfn](http://www.cisco.com/go/cfn). An account on Cisco.com is not required.

**Table 4** Feature Information for Enable Multilink PPP via RADIUS for Preauthentication User

Feature Name	Releases	Feature Information
Enable Multilink PPP via RADIUS for Preauthentication User	12.2(11)T	The Enable Multilink PPP via RADIUS for Preauthentication User feature allows an administrator to selectively enable and disable Multilink PPP (MLP) negotiation for different users through RADIUS vendor-specific attribute (VSA) preauth:ppp-multilink=1 to the preauthentication profile.  This feature was introduced in Cisco IOS Release 12.2(11)T.

## Glossary

**AAA** --authentication, authorization, and accounting. Suite of network security services that provide the primary framework through which access control can be set up on your Cisco router or access server.

**attribute** --RADIUS Internet Engineering Task Force (IETF) attributes are the original set of 255 standard attributes that are used to communicate AAA information between a client and a server. Because IETF attributes are standard, the attribute data is predefined and well known; thus all clients and servers that exchange AAA information via IETF attributes must agree on attribute data such as the exact meaning of the attributes and the general bounds of the values for each attribute.

**L2F** --Layer 2 Forwarding. Protocol that supports the creation of secure virtual private dial-up networks over the Internet.

**L2TP** --Layer 2 Tunnel Protocol. A Layer 2 tunneling protocol that enables an ISP or other access service to create a virtual tunnel to link customer remote sites or remote users with corporate home networks. In particular, a network access server (NAS) at the ISP point of presence (POP) exchanges PPP messages with the remote users and communicates by L2F or L2TP requests and responses with the customer tunnel server to set up tunnels.

**LAC** --L2TP access concentrator. A network access server (NAS) to which the client directly connects and through which PPP frames are tunneled to the L2TP network server (LNS). The LAC need only implement the media over which L2TP is to operate to pass traffic to one or more LNSs. The LAC may tunnel any protocol carried within PPP. The LAC initiates incoming calls and receives outgoing calls. A LAC is analogous to an L2F network access server.

**LNS** --L2TP network server. A termination point for L2TP tunnels, and an access point where PPP frames are processed and passed to higher-layer protocols. An LNS can operate on any platform that terminates PPP. The LNS handles the server side of the L2TP protocol. L2TP relies only on the single medium over which L2TP tunnels arrive. The LNS initiates outgoing calls and receives incoming calls. An LNS is analogous to a home gateway in L2F technology.

**MLP**--Multilink PPP. MLP allows packets to be fragmented and the fragments to be sent at the same time over multiple point-to-point links to the same remote address. The multiple links come up in response to a defined dialer load threshold. The load can be calculated on inbound traffic, outbound traffic, or on either,



as needed for the traffic between the specific sites. MLP provides bandwidth on demand and reduces transmission latency across WAN links.

MLP is designed to work over synchronous and asynchronous serial and BRI and PRI types of single or multiple interfaces that have been configured to support both dial-on-demand rotary groups and PPP encapsulation.

**RADIUS** --Remote Authentication Dial-In User Service. RADIUS is a distributed client/server system that secures networks against unauthorized access. In the Cisco implementation, RADIUS clients run on Cisco routers and send authentication requests to a central RADIUS server that contains all user authentication and network service access information.

**VSA** --Vendor-Specific Attribute. VSAs derived from one IETF attribute--vendor-specific (attribute 26). Attribute 26 allows a vendor to create and implement an additional 255 attributes. That is, a vendor can create an attribute that does not match the data of any IETF attribute and encapsulate it behind attribute 26: essentially, Vendor-Specific = "protocol:attribute=value."

Cisco and the Cisco logo are trademarks or registered trademarks of Cisco and/or its affiliates in the U.S. and other countries. To view a list of Cisco trademarks, go to this URL: [www.cisco.com/go/trademarks](http://www.cisco.com/go/trademarks). Third-party trademarks mentioned are the property of their respective owners. The use of the word partner does not imply a partnership relationship between Cisco and any other company. (1110R)

Any Internet Protocol (IP) addresses and phone numbers used in this document are not intended to be actual addresses and phone numbers. Any examples, command display output, network topology diagrams, and other figures included in the document are shown for illustrative purposes only. Any use of actual IP addresses or phone numbers in illustrative content is unintentional and coincidental.



## Enhanced Test Command

---

The Enhanced Test Command feature allows a named user profile to be created with calling line ID (CLID) or dialed number identification service (DNIS) attribute values. The CLID or DNIS attribute values can be associated with the RADIUS record that is sent with the user profile so that the RADIUS server can access CLID or DNIS attribute information for all incoming calls.

- [Finding Feature Information, page 27](#)
- [Restrictions for the Enhanced Test Command, page 27](#)
- [How to Configure the Enhanced Test Command, page 27](#)
- [Configuration Example for Enhanced Test Command, page 29](#)
- [Additional References, page 30](#)
- [Feature Information for Enhanced Test Command, page 31](#)
- [Glossary, page 32](#)

## Finding Feature Information

Your software release may not support all the features documented in this module. For the latest caveats and feature information, see [Bug Search Tool](#) and the release notes for your platform and software release. To find information about the features documented in this module, and to see a list of the releases in which each feature is supported, see the feature information table at the end of this module.

Use Cisco Feature Navigator to find information about platform support and Cisco software image support. To access Cisco Feature Navigator, go to [www.cisco.com/go/cfn](http://www.cisco.com/go/cfn). An account on Cisco.com is not required.

## Restrictions for the Enhanced Test Command

The `test aaa group` command does not work with TACACS+.

## How to Configure the Enhanced Test Command

- [Configuring a User Profile and Associating it with the RADIUS Record, page 28](#)
- [Verifying the Enhanced Test Command Configuration, page 29](#)

## Configuring a User Profile and Associating it with the RADIUS Record

This section describes how to create a named user profile with CLID or DNIS attribute values and associate it with the RADIUS record.

### SUMMARY STEPS

1. **enable**
2. **configure terminal**
3. **aaa user profile** *profile-name*
4. **aaa attribute** { *dnis* | *clid* }
5. **exit**
6. Router# **test aaa group** { *group-name* | **radius** } *username password new-code* [**profile** *profile-name*]

### DETAILED STEPS

Command or Action	Purpose
<b>Step 1</b> <b>enable</b>  <b>Example:</b> Router> enable	Enables privileged EXEC mode. <ul style="list-style-type: none"> <li>• Enter your password if prompted.</li> </ul>
<b>Step 2</b> <b>configure terminal</b>  <b>Example:</b> Router# configure terminal	Enters global configuration mode.
<b>Step 3</b> <b>aaa user profile</b> <i>profile-name</i>  <b>Example:</b> Router(config)# aaa user profile profilename1	Creates a user profile.
<b>Step 4</b> <b>aaa attribute</b> { <i>dnis</i>   <i>clid</i> }  <b>Example:</b> Router# configure terminal	Adds DNIS or CLID attribute values to the user profile and enters AAA-user configuration mode.
<b>Step 5</b> <b>exit</b>	Exit Global Configuration mode.

Command or Action	Purpose
<p><b>Step 6</b> Router# <b>test aaa group</b> {<i>group-name</i>   <b>radius</b>} <i>username</i> <i>password</i> <b>new-code</b> [<b>profile</b> <i>profile-name</i>]</p> <p><b>Example:</b></p> <pre>Router# test aaa group radius secret new-code profile profilename1</pre>	<p>Associates a DNIS or CLID named user profile with the record sent to the RADIUS server.</p> <p><b>Note</b> The <i>profile-name</i> must match the profile-name specified in the <b>aaa user profile</b> command.</p>

## Verifying the Enhanced Test Command Configuration

To verify the Enhanced Test Command configuration, use the following commands in privileged EXEC mode:

Command	Purpose
Router# <b>debug radius</b>	Displays information associated with RADIUS.
Router# <b>more system:running-config</b>	Displays the contents of the current running configuration file. (Note that the <b>more system:running-config</b> command has replaced the <b>show running-config</b> command.)

## Configuration Example for Enhanced Test Command

- [User Profile Associated With a test aaa group command Example, page 29](#)

### User Profile Associated With a test aaa group command Example

The following example shows how to configure the dnis = dnisvalue user profile “prfl1” and associate it with a **test aaa group** command. In this example, the **debug radius** command has been enabled and the output follows the configuration.

```
aaa user profile prfl1
  aaa attribute dnis
  aaa attribute dnis dnisvalue
  no aaa attribute clid
! Attribute not found.
  aaa attribute clid clidvalue
  no aaa attribute clid
  exit
!
! Associate the dnis user profile with the test aaa group command.
test aaa group radius user1 pass new-code profile prfl1
!
!
!
! debug radius output, which shows that the dnis value has been passed to the radius !
server.
*Dec 31 16:35:48: RADIUS: Sending packet for Unique id = 0
```

```

*Dec 31 16:35:48: RADIUS: Initial Transmit unknown id 8 172.22.71.21:1645, Access-
Request, len 68
*Dec 31 16:35:48: RADIUS: code=Access-Request id=08 len=0068
  authenticator=1E CA 13 F2 E2 81 57 4C - 02 EA AF 9D 30 D9 97 90
  T=User-Password[2] L=12 V=*
  T=User-Name[1] L=07 V="test"
  T=Called-Station-Id[30] L=0B V="dnisvalue"
  T=Service-Type[6] L=06 V=Login [1]
  T=NAS-IP-Address[4] L=06 V=10.0.1.81

*Dec 31 16:35:48: RADIUS: Received from id 8 172.22.71.21:1645, Access-Accept, len 38
*Dec 31 16:35:48: RADIUS: code=Access-Accept id=08 len=0038

```

## Additional References

The following sections provide references related to Enhanced Test Command.

### Related Documents

Related Topic	Document Title
Security Commands	<i>Cisco IOS Security Command Reference</i>

### Standards

Standard	Title
None	--

### MIBs

MIB	MIBs Link
None	To locate and download MIBs for selected platforms, Cisco IOS releases, and feature sets, use Cisco MIB Locator found at the following URL: <a href="http://www.cisco.com/go/mibs">http://www.cisco.com/go/mibs</a>

### RFCs

RFC	Title
None	--

### Technical Assistance

Description	Link
<p>The Cisco Support website provides extensive online resources, including documentation and tools for troubleshooting and resolving technical issues with Cisco products and technologies.</p> <p>To receive security and technical information about your products, you can subscribe to various services, such as the Product Alert Tool (accessed from Field Notices), the Cisco Technical Services Newsletter, and Really Simple Syndication (RSS) Feeds.</p> <p>Access to most tools on the Cisco Support website requires a Cisco.com user ID and password.</p>	<p><a href="http://www.cisco.com/techsupport">http://www.cisco.com/techsupport</a></p>

## Feature Information for Enhanced Test Command

The following table provides release information about the feature or features described in this module. This table lists only the software release that introduced support for a given feature in a given software release train. Unless noted otherwise, subsequent releases of that software release train also support that feature.

Use Cisco Feature Navigator to find information about platform support and Cisco software image support. To access Cisco Feature Navigator, go to [www.cisco.com/go/cfn](http://www.cisco.com/go/cfn). An account on Cisco.com is not required.

**Table 5** Feature Information for Enhanced Test Command

Feature Name	Releases	Feature Information
Enhanced Test Command	Cisco IOS XE Release 3.3SG	<p>The Enhanced Test Command feature allows a named user profile to be created with calling line ID (CLID) or Dialed Number Identification Service (DNIS) attribute values. The CLID or DNIS attribute values can be associated with the RADIUS record that is sent with the user profile so that the RADIUS server can access CLID or DNIS attribute information for all incoming calls.</p> <p>The following commands were introduced or modified: <b>aaa attribute</b>, <b>aaa user profile</b>, and <b>test aaa group</b></p>

# Glossary

**attribute** --RADIUS Internet Engineering Task Force (IETF) attributes are the original set of 255 standard attributes that are used to communicate AAA information between a client and a server. Because IETF attributes are standard, the attribute data is predefined and well known; thus all clients and servers who exchange AAA information via IETF attributes must agree on attribute data such as the exact meaning of the attributes and the general bounds of the values for each attribute.

**CLID**--calling line ID. CLID provides the number from which a call originates.

**DNIS**--dialed number identification service. DNIS provides the number that is dialed.

Any Internet Protocol (IP) addresses and phone numbers used in this document are not intended to be actual addresses and phone numbers. Any examples, command display output, network topology diagrams, and other figures included in the document are shown for illustrative purposes only. Any use of actual IP addresses or phone numbers in illustrative content is unintentional and coincidental. © 2001, 2006-2007 Cisco Systems, Inc. All rights reserved.

Cisco and the Cisco logo are trademarks or registered trademarks of Cisco and/or its affiliates in the U.S. and other countries. To view a list of Cisco trademarks, go to this URL: [www.cisco.com/go/trademarks](http://www.cisco.com/go/trademarks). Third-party trademarks mentioned are the property of their respective owners. The use of the word partner does not imply a partnership relationship between Cisco and any other company. (1110R)

Any Internet Protocol (IP) addresses and phone numbers used in this document are not intended to be actual addresses and phone numbers. Any examples, command display output, network topology diagrams, and other figures included in the document are shown for illustrative purposes only. Any use of actual IP addresses or phone numbers in illustrative content is unintentional and coincidental.



# Offload Server Accounting Enhancement

---

The Offload Server Accounting Enhancement feature allows users to maintain authentication and accounting information between their network access servers (NASs) and the offload server.

Although NASs can already synchronize information with an offload server, this feature extends the functionality to include a unique session-id, adding the Acct-Session-Id (attribute 44) before the existing session-id (NAS-IP-Address), and Class (attribute 25) information collected by the NASs.

- [Finding Feature Information, page 33](#)
- [Prerequisites, page 33](#)
- [Information About Offload Server Accounting Enhancement, page 34](#)
- [How to Configure the Offload Server Accounting Enhancement, page 34](#)
- [Configuration Examples for the Offload Server Accounting Enhancement, page 35](#)
- [Additional References, page 36](#)
- [Feature Information for Offload Server Accounting Enhancement, page 37](#)
- [Glossary, page 38](#)

## Finding Feature Information

Your software release may not support all the features documented in this module. For the latest caveats and feature information, see [Bug Search Tool](#) and the release notes for your platform and software release. To find information about the features documented in this module, and to see a list of the releases in which each feature is supported, see the feature information table at the end of this module.

Use Cisco Feature Navigator to find information about platform support and Cisco software image support. To access Cisco Feature Navigator, go to [www.cisco.com/go/cfn](http://www.cisco.com/go/cfn). An account on Cisco.com is not required.

## Prerequisites

Before configuring the Offload Server Accounting Enhancement feature, you must perform the following tasks:

- Enable AAA. See the Configuring Authentication feature module for more information.
- Enable VPN. See the *Cisco IOS Security Configuration Guide: Secure Connectivity*, Release 12.4T for more information.



## Information About Offload Server Accounting Enhancement

The Offload Server Accounting Enhancement feature allows users to configure their network access servers (NAS) to synchronize authentication and accounting information--NAS-IP-Address (attribute 4) and Class (attribute 25)--with the offload server.

An offload server interacts with a NAS through a Virtual Private Network (VPN) to perform required Point-to-Point Protocol (PPP) negotiation for calls. The NAS performs call preauthentication, whereas the offload server performs user authentication. This feature allows the authentication and accounting data of the NAS to synchronize with the offload server as follows:

- During preauthentication, the NAS generates a unique session-id, adding the Acct-Session-Id (attribute 44) before the existing session-id (NAS-IP-Address), and retrieves a Class attribute. The new session-id is sent in preauthentication requests and resource accounting requests; the Class attribute is sent in resource accounting requests.

**Note**

---

Unique session-ids are needed when multiple NASs are being processed by one offload server.

---

- The NAS-IP-Address, the Acct-Session-Id, and the Class attribute are transmitted to the offload server through Layer 2 Forwarding (L2F) options.
- The offload server includes the new, unique session-id in user access requests and user session accounting requests. The Class attribute that is passed from the NAS is included in the user access request, but a new Class attribute is received in the user access reply; this new Class attribute should be included in user session accounting requests.

## How to Configure the Offload Server Accounting Enhancement

- [Configuring Unique Session IDs, page 34](#)
- [Configuring Offload Server to Synchronize with NAS Clients, page 35](#)
- [Verifying Offload Server Accounting, page 35](#)

### Configuring Unique Session IDs

To maintain unique session IDs among NASs, use the following global configuration command. When multiple NASs are being processed by one offload server, this feature must be enabled by all NASs and by the offload server to ensure a common and unique session-id.

Command	Purpose
Router(config)# <b>radius-server attribute 44 extend-with-addr</b>	<p>Adds the accounting IP address in front of the existing AAA session ID.</p> <p><b>Note</b> The unique session-id is different from other NAS session-ids because it adds the Acct-Session-Id (attribute 44) before the existing session-id (NAS-IP-Address).</p>

## Configuring Offload Server to Synchronize with NAS Clients

To configure the offload server to synchronize accounting session information with the NAS clients, use the following global configuration command:

Command	Purpose
Router(config)# <b>radius-server attribute 44 sync-with-client</b>	Configures the offload server to synchronize accounting session information with the NAS clients.

## Verifying Offload Server Accounting

To verify whether the NAS has synchronized authentication and accounting data with the offload server, use the following commands in privileged EXEC mode:

Command	Purpose
Router# <b>more system:running-config</b>	Displays the contents of the current running configuration file. (Note that the <b>more system:running-config</b> command has replaced the <b>show running-config</b> command.)
Router(config)# <b>debug radius</b>	Displays information associated with RADIUS. The output of this command shows whether attribute 44 is being sent in access requests. The output, however, does not show the entire value for attribute 44. To view the entire value for attribute 44, refer to your RADIUS server log.

## Configuration Examples for the Offload Server Accounting Enhancement

- [Unique Session ID Configuration Example, page 36](#)
- [Offload Server Synchronization with NAS Clients Example, page 36](#)

## Unique Session ID Configuration Example

The following example shows how to configure unique session IDs among NASs:

```
aaa new-model
aaa authentication ppp default group radius
radius-server host 10.100.1.34
radius-server attribute 44 include-in-access-req
radius-server attribute 44 extend-with-addr
```

## Offload Server Synchronization with NAS Clients Example

The following example shows how to configure the offload server to synchronize accounting session information with NAS clients:

```
radius-server attribute 44 sync-with-client
```

## Additional References

The following sections provide references related to the Offload Server Accounting Enhancement.

### Related Documents

Related Topic	Document Title
Enable VPN	<i>Cisco IOS Security Configuration Guide: Secure Connectivity</i> , Release 12.4T.
Enable AAA	Configuring Authentication module.

### Standards

Standard	Title
None	--

### MIBs

MIB	MIBs Link
None	To locate and download MIBs for selected platforms, Cisco IOS releases, and feature sets, use Cisco MIB Locator found at the following URL: <a href="http://www.cisco.com/go/mibs">http://www.cisco.com/go/mibs</a>

### RFCs

RFC	Title
None	--

### Technical Assistance

Description	Link
<p>The Cisco Support website provides extensive online resources, including documentation and tools for troubleshooting and resolving technical issues with Cisco products and technologies.</p> <p>To receive security and technical information about your products, you can subscribe to various services, such as the Product Alert Tool (accessed from Field Notices), the Cisco Technical Services Newsletter, and Really Simple Syndication (RSS) Feeds.</p> <p>Access to most tools on the Cisco Support website requires a Cisco.com user ID and password.</p>	<p><a href="http://www.cisco.com/techsupport">http://www.cisco.com/techsupport</a></p>

## Feature Information for Offload Server Accounting Enhancement

The following table provides release information about the feature or features described in this module. This table lists only the software release that introduced support for a given feature in a given software release train. Unless noted otherwise, subsequent releases of that software release train also support that feature.

Use Cisco Feature Navigator to find information about platform support and Cisco software image support. To access Cisco Feature Navigator, go to [www.cisco.com/go/cfn](http://www.cisco.com/go/cfn). An account on Cisco.com is not required.

**Table 6** Feature Information for Offload Server Accounting Enhancement

Feature Name	Releases	Feature Information
Offload Server Accounting Enhancement	12.2(4)T 12.2(28)SB 12.2(33)SRC	<p>The Offload Server Accounting Enhancement feature allows users to maintain authentication and accounting information between their network access servers (NASs) and the offload server.</p> <p>This feature was introduced in Cisco IOS Release 12.2(4)T.</p> <p>This feature was integrated into Cisco IOS Release 12.2(28)SB.</p> <p>This feature was integrated into Cisco IOS Release 12.2(33)SRC.</p> <p>The following commands were introduced or modified: <b>radius-server attribute 44 extend-with-addr</b>, <b>radius-server attribute 44 sync-with-client</b></p>

## Glossary

**AAA** --authentication, authorization, and accounting. Suite of network security services that provide the primary framework through which access control can be set up on your Cisco router or access server.

**Acct-Session-ID (attribute 44)** --A unique accounting identifier that makes it easy to match start and stop records in a log file. Acct-Session ID numbers restart at 1 each time the router is power-cycled or the software is reloaded.

**Class (attribute 25)** --An accounting attribute. Arbitrary value that the network access server includes in all accounting packets for this user if the attribute is supplied by the RADIUS server.

**L2F** --Layer 2 Forwarding. A Layer 2 tunneling protocol that enables an ISP or other access service to create a virtual tunnel to link customer remote sites or remote users with corporate home networks. In particular, a network access server (NAS) at the ISP point of presence (POP) exchanges PPP messages with the remote users and communicates by L2F or L2TP requests and responses with the customer tunnel server to set up tunnels.

**NAS** --network access server. A Cisco platform (or collection of platforms, such as an AccessPath system) that interfaces between the packet world (for example, the Internet) and the circuit world (for example, the public switched telephone network).

**NAS-IP Address (attribute 4)** --Specifies the IP address of the network access server that is requesting authentication. The default value is 0.0.0.0/0.

**PPP** --Point-to-Point Protocol. Successor to SLIP that provides router-to-router and host-to-network connections over synchronous and asynchronous circuits. Whereas SLIP was designed to work with IP, PPP was designed to work with several network layer protocols, such as IP, IPX, and ARA. PPP also has built-in security mechanisms, such as CHAP and PAP. PPP relies on two protocols: LCP and NCP.

**RADIUS** --Remote Authentication Dial-In User Service. RADIUS is a distributed client/server system that secures networks against unauthorized access. In the Cisco implementation, RADIUS clients run on Cisco

routers and send authentication requests to a central RADIUS server that contains all user authentication and network service access information.

**VPN** --A system that permits dial-in networks to exist remotely to home networks, while giving the appearance of being directly connected. VPNs use L2TP and L2F to terminate the Layer 2 and higher parts of the network connection at the LNS instead of the LAC.

Any Internet Protocol (IP) addresses and phone numbers used in this document are not intended to be actual addresses and phone numbers. Any examples, command display output, network topology diagrams, and other figures included in the document are shown for illustrative purposes only. Any use of actual IP addresses or phone numbers in illustrative content is unintentional and coincidental. © 2001-2009 Cisco Systems, Inc. All rights reserved.

Cisco and the Cisco logo are trademarks or registered trademarks of Cisco and/or its affiliates in the U.S. and other countries. To view a list of Cisco trademarks, go to this URL: [www.cisco.com/go/trademarks](http://www.cisco.com/go/trademarks). Third-party trademarks mentioned are the property of their respective owners. The use of the word partner does not imply a partnership relationship between Cisco and any other company. (1110R)

Any Internet Protocol (IP) addresses and phone numbers used in this document are not intended to be actual addresses and phone numbers. Any examples, command display output, network topology diagrams, and other figures included in the document are shown for illustrative purposes only. Any use of actual IP addresses or phone numbers in illustrative content is unintentional and coincidental.





# Tunnel Authentication via RADIUS on Tunnel Terminator

---

The Tunnel Authentication via RADIUS on Tunnel Terminator feature allows tunnel authentication and authorization to occur through a remote RADIUS server instead of local configuration on the tunnel terminator. Thus, users no longer have to configure L2TP access concentrator (LAC) or Layer 2 Tunneling Protocol (L2TP) network server (LNS) data in a virtual private dialup network (VPDN) group when an LNS or LAC is configured for incoming dialin or dialout L2TP tunnel termination; this information can now be added to a remote RADIUS server, providing a more manageable and scalable solution for L2TP tunnel authentication and authorization on the tunnel terminator.

- [Finding Feature Information, page 41](#)
- [Prerequisites for Tunnel Authentication via RADIUS on Tunnel Terminator, page 41](#)
- [Restrictions for Tunnel Authentication via RADIUS on Tunnel Terminator, page 42](#)
- [Information About Tunnel Authentication via RADIUS on Tunnel Terminator, page 42](#)
- [How to Configure Tunnel Authentication via RADIUS on Tunnel Terminator, page 43](#)
- [Configuration Examples for Tunnel Authentication via RADIUS on Tunnel Terminator, page 47](#)
- [Additional References, page 47](#)
- [Feature Information for Tunnel Authentication via RADIUS on Tunnel Terminator, page 49](#)
- [Glossary, page 49](#)

## Finding Feature Information

Your software release may not support all the features documented in this module. For the latest caveats and feature information, see [Bug Search Tool](#) and the release notes for your platform and software release. To find information about the features documented in this module, and to see a list of the releases in which each feature is supported, see the feature information table at the end of this module.

Use Cisco Feature Navigator to find information about platform support and Cisco software image support. To access Cisco Feature Navigator, go to [www.cisco.com/go/cfn](http://www.cisco.com/go/cfn). An account on Cisco.com is not required.

## Prerequisites for Tunnel Authentication via RADIUS on Tunnel Terminator

Before configuring this feature, you should define a RADIUS server group. For information on completing this task, refer to the chapter “Configuring RADIUS ” in the *Cisco IOS Security Configuration Guide: Securing User Services*



**Note**

The service-type in the RADIUS user's profile for the tunnel initiator should always be set to "Outbound."

## Restrictions for Tunnel Authentication via RADIUS on Tunnel Terminator

The Tunnel Authentication via RADIUS on Tunnel Terminator feature is applicable only to L2TP; that is, protocols such as (Layer 2 Forwarding) L2F and Point-to-Point Tunneling Protocol (PPTP) are not supported.

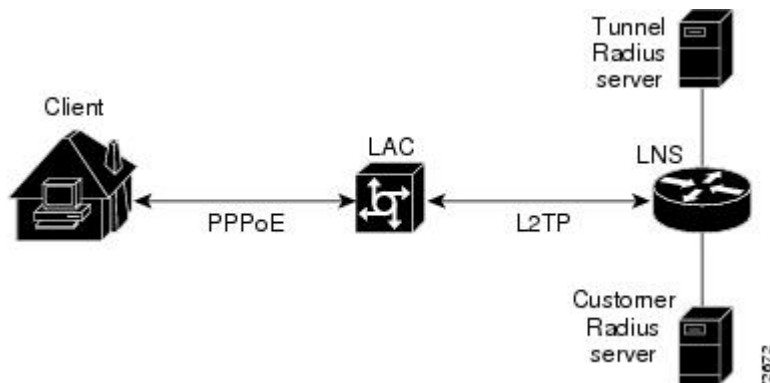
## Information About Tunnel Authentication via RADIUS on Tunnel Terminator

The Tunnel Authentication via RADIUS on Tunnel Terminator feature allows the LNS to perform remote authentication and authorization with RADIUS on incoming LAC dialin connection requests. This feature also allows the L2TP LAC to perform remote authentication and authorization with RADIUS on incoming L2TP LNS dialout connection requests.

Before the introduction of this feature, the LNS could only perform L2TP tunnel authentication and authorization locally. These processes can be difficult to maintain across numerous LNSs, especially if the number of VPDN groups is large, because the LAC information must be configured under the VPDN group configurations of the LNS. Remote RADIUS authentication and authorization allows users to store the LAC configurations on the RADIUS server, thereby avoiding the need to store information locally. Thus, the new LAC information can be added to the RADIUS server as necessary, and the group of LNSs can authenticate and authorize by using a common user database on RADIUS.

The figure below and the corresponding steps explain how this feature works.

**Figure 1** LNS Remote RADIUS Tunnel Authentication and Authorization for L2TP Dialin Calls Topology



- After the LNS receives a start-control-connection request (SCCRQ), it starts tunnel authentication and submits a request to RADIUS with the LAC hostname and the dummy password "cisco." (If the LNS determines that authorization should be performed locally, it will search the VPDN group configurations.)

**Note**

To change the dummy password, use the **vpdn tunnel authorization password** command.

- If the password sent by the LNS matches the password that is configured in the RADIUS server, the server will return attribute 90 (Tunnel-Client-Auth-ID) and attribute 69 (Tunnel-Password) after the LAC information is located. Otherwise, the RADIUS server replies back with an access-reject, and the LNS drops the tunnel.
- The LNS will check for the following attribute information from the RADIUS reply:
  - Attribute 90 (Tunnel-Client-Auth-ID), which is used as the LAC hostname. If this attribute does not match the LAC hostname, the tunnel will be dropped.
  - Attribute 69 (Tunnel-Password), which is used for the L2TP CHAP-like authentication shared secret. This attribute is compared against the LAC challenge attribute-value pair (AVP) that was received in the SCCRQ. If this attribute does not match the AVP, the tunnel will be dropped.
- If both attributes match, the L2TP tunnel will be established. Thereafter, you can proceed with PPP negotiation and authentication with the remote client.

**Note**

PPP remote authentication is done to a potential different customer RADIUS server by a separate access-request/access-accept sequence. The tunnel authorization may be done by a different tunnel RADIUS server.

- [New RADIUS Attributes, page 43](#)

## New RADIUS Attributes

To help implement this feature, the following two new Cisco-specific RADIUS attributes have been introduced:

- Cisco:Cisco-Avpair = “vpdn:dout-dialer = <LAC dialer number>”--Specifies which LAC dialer to use on the LAC for a dialout configuration.
- Cisco:Cisco-Avpair = “vpdn:vpdn-vtemplate = <vtemplate number>”--Specifies the virtual template number that will be used for cloning on the LNS for a dialin configuration. (This attribute is the RADIUS counterpart for the virtual-template under the vpdn-group configuration.)

# How to Configure Tunnel Authentication via RADIUS on Tunnel Terminator

- [Configuring the LNS or LAC for Remote RADIUS Tunnel Authentication and Authorization, page 44](#)
- [Verifying Remote RADIUS Tunnel Authentication and Authorization Configurations, page 45](#)
- [Verifying Remote RADIUS Tunnel Authentication and Authorization Configurations, page 46](#)

## Configuring the LNS or LAC for Remote RADIUS Tunnel Authentication and Authorization

The following task is used to configure an LNS or LAC for incoming dialin or dialout L2TP tunnel termination.

### SUMMARY STEPS

1. `enable`
2. `configure terminal`
3. `aaa authorization network { default | list-name } method1 [method2...]`
4. `vpdn tunnel authorization network { method-list-name | default }`
5. `vpdn tunnel authorization virtual-template vtemplate-number`
6. `vpdn tunnel authorization password password`

### DETAILED STEPS

Command or Action	Purpose
<p><b>Step 1</b> <code>enable</code></p> <p><b>Example:</b></p> <pre>Router&gt; enable</pre>	<p>Enables privileged EXEC mode.</p> <ul style="list-style-type: none"> <li>• Enter your password if prompted.</li> </ul>
<p><b>Step 2</b> <code>configure terminal</code></p> <p><b>Example:</b></p> <pre>Router# configure terminal</pre>	<p>Enters global configuration mode.</p>
<p><b>Step 3</b> <code>aaa authorization network { default   list-name } method1 [method2...]</code></p> <p><b>Example:</b></p> <pre>Router(config)# aaa authorization network mymethodlist group VPDN-Group</pre>	<p>Defines an AAA authorization method list for network services.</p>
<p><b>Step 4</b> <code>vpdn tunnel authorization network { method-list-name   default }</code></p> <p><b>Example:</b></p> <pre>Router(config)# vpdn tunnel authorization network mymethodlist</pre>	<p>Specifies the AAA authorization method list that will be used for remote tunnel hostname-based authorization.</p> <ul style="list-style-type: none"> <li>• If the <i>list-name</i> argument was specified in the <b>aaa authorization</b> command, you use that list name here.</li> <li>• If the default keyword was specified in the <b>aaa authorization</b> command, you must choose that keyword, which specifies the default authorization methods that are listed with the <b>aaa authorization</b> command here.</li> </ul>

Command or Action	Purpose
<p><b>Step 5</b> <code>vpdn tunnel authorization virtual-template</code> <i>virtual-template-number</i></p> <p><b>Example:</b></p> <pre>Router(config)# vpdn tunnel authorization virtual-template 10</pre>	<p>(Optional) Selects the default virtual template from which to clone virtual access interfaces.</p>
<p><b>Step 6</b> <code>vpdn tunnel authorization password</code> <i>password</i></p> <p><b>Example:</b></p> <pre>Router(config)# vpdn tunnel authorization password cisco</pre>	<p>(Optional) Configures a “dummy” password for the RADIUS authorization request to retrieve the tunnel configuration that is based on the remote tunnel hostname.</p> <p><b>Note</b> If this command is not enabled, the password will always be “cisco.”</p>

## Verifying Remote RADIUS Tunnel Authentication and Authorization Configurations

To verify that the L2TP tunnel is up, use the `show vpdn tunnel` command in EXEC mode. One tunnel and one session must be set up.

```
Router# show vpdn tunnel
L2TP Tunnel and Session Information Total tunnels 1 sessions 1
LocID RemID Remote Name State Remote Address Port Sessions VPDN Group
4571 61568 csidtw13 est 10.0.195.4 1701 1 ?
LocID RemID TunID Intf Username State Last Chg
4 11 4571 Vi4.1 csidtw9@cisco.com est 00:02:29
%No active L2F tunnels
%No active PPTP tunnels
%No active PPPoE tunnels
```

To verify that the AAA authorization RADIUS server is configured on the LNS and that the LNS can receive attributes 90 and 69 from the RADIUS server, perform the following steps:

### SUMMARY STEPS

1. Enable the `debug radius` command on the LNS.
2. Enable the `show logging` command on the LNS and ensure that “access-accept” is in the output and that attributes 90 and 69 can be seen in the RADIUS reply.

### DETAILED STEPS

**Step 1** Enable the `debug radius` command on the LNS.

**Step 2** Enable the `show logging` command on the LNS and ensure that “access-accept” is in the output and that attributes 90 and 69 can be seen in the RADIUS reply.

**Example:**

```
00:32:56: RADIUS: Received from id 21645/5 172.19.192.50:1645, Access-Accept, len 81
```

```

00:32:56: RADIUS: authenticator 73 2B 1B C2 33 71 93 19 - 62 AC 3E BE 0D 13 14 85
00:32:56: RADIUS: Service-Type [6] 6 Outbound [5]
00:32:56: RADIUS: Tunnel-Type [64] 6 00:L2TP [3]
00:32:56: RADIUS: Tunnel-Medium-Type [65] 6 00:IPv4 [1]
00:32:56: RADIUS: Tunnel-Client-Auth-Id [90] 6 00:"csidtwl3"
00:32:56: RADIUS: Tunnel-Password [69] 8 *
00:32:56: RADIUS: Vendor, Cisco [26] 29
00:32:56: RADIUS: Cisco AVpair [1] 23 "vpdn:vpdn-vtemplate=1"

```

---

## Verifying Remote RADIUS Tunnel Authentication and Authorization Configurations

To verify that the L2TP tunnel has been established and that the LNS can perform PPP negotiation and authentication with the remote client, perform the following steps:

### SUMMARY STEPS

1. Enable the **debug ppp negotiation** and **debug ppp authentication** commands on LNS.
2. Enable the **show logging** command on LNS and observe that LNS receives a PPP CHAP challenge and then sends a PPP CHAP “SUCCESS” to the client.
3. After PPP authentication is successful, observe from the debug output that PPP negotiation has started, that the LNS has received LCP (IPCP) packets, and that negotiation is successful.

### DETAILED STEPS

---

- Step 1** Enable the **debug ppp negotiation** and **debug ppp authentication** commands on LNS.
- Step 2** Enable the **show logging** command on LNS and observe that LNS receives a PPP CHAP challenge and then sends a PPP CHAP “SUCCESS” to the client.

#### Example:

```

00:38:50: ppp3 PPP: Received LOGIN Response from AAA = PASS
00:38:50: ppp3 PPP: Phase is FORWARDING, Attempting Forward
00:38:50: Vi4.1 Tnl/Sn4571/4 L2TP: Session state change from wait-for-service-selection to
established
00:38:50: Vi4.1 PPP: Phase is AUTHENTICATING, Authenticated User
00:38:50: Vi4.1 CHAP: O SUCCESS id 1 len 4

```

- Step 3** After PPP authentication is successful, observe from the debug output that PPP negotiation has started, that the LNS has received LCP (IPCP) packets, and that negotiation is successful.

#### Example:

```

00:38:50: Vi4.1 IPCP: State is Open
00:38:50: Vi4.1 IPCP: Install route to 200.1.1.4

```

---

# Configuration Examples for Tunnel Authentication via RADIUS on Tunnel Terminator

- [L2TP Network Server Configuration Example, page 47](#)
- [RADIUS User Profile for Remote RADIUS Tunnel Authentication Example, page 47](#)

## L2TP Network Server Configuration Example

The following example shows how to configure the LNS to enable remote RADIUS tunnel authentication and authorization:

```
! Define a RADIUS server group
aaa group server radius VPDN-group
  server 64.102.48.91 auth-port 1645 acct-port 1646
!
! RADIUS configurations only
aaa authorization network mymethodlist group VPDN-Group
vpdn tunnel authorization network mymethodlist
vpdn tunnel authorization virtual-template 10
```

## RADIUS User Profile for Remote RADIUS Tunnel Authentication Example

The following are examples of RADIUS user profiles for the LNS to terminate L2TP tunnels from a LAC. In the first user profile, the final line is optional if the **vpdn tunnel authorization virtual-template** command is used. Also, the first RADIUS user profile is for L2TP dialin, and the second RADIUS user profile is for L2TP dialout.

The service-type in the RADIUS user's profile for the tunnel initiator should always be set to "Outbound."

```
csidtwl3 Password = "cisco"
  Service-Type = Outbound,
  Tunnel-Type = :0:L2TP,
  Tunnel-Medium-Type = :0:IP,
  Tunnel-Client-Auth-ID = :0:"csidtwl3",
  Tunnel-Password = :0:"cisco"
  Cisco:Cisco-Avpair = "vpdn:vpdn-vtemplate=1"
csidtw1 Password = "cisco"
  Service-Type = Outbound,
  Tunnel-Type = :0:L2TP,
  Tunnel-Medium-Type = :0:IP,
  Tunnel-Client-Auth-ID = :0:"csidtw1",
  Tunnel-Password = :0:"cisco"
  Cisco:Cisco-Avpair = "vpdn:dout-dialer=2"
```

## Additional References

The following sections provide references related to the Tunnel Authentication via RADIUS on Tunnel Terminator feature.

**Related Documents**

Related Topic	Document Title
VPNs	<i>Cisco IOS VPDN Configuration Guide</i> , Release 12.4T
RADIUS Attributes	<i>Cisco IOS Security Configuration Guide: Securing User Services</i> , Release 15.0.

**Standards**

Standard	Title
None.	--

**MIBs**

MIB	MIBs Link
None.	To locate and download MIBs for selected platforms, Cisco IOS releases, and feature sets, use Cisco MIB Locator found at the following URL: <a href="http://www.cisco.com/go/mibs">http://www.cisco.com/go/mibs</a>

**RFCs**

RFC	Title
RFC 2868	RADIUS Attributes for Tunnel Protocol Support

**Technical Assistance**

Description	Link
<p>The Cisco Support website provides extensive online resources, including documentation and tools for troubleshooting and resolving technical issues with Cisco products and technologies.</p> <p>To receive security and technical information about your products, you can subscribe to various services, such as the Product Alert Tool (accessed from Field Notices), the Cisco Technical Services Newsletter, and Really Simple Syndication (RSS) Feeds.</p> <p>Access to most tools on the Cisco Support website requires a Cisco.com user ID and password.</p>	<a href="http://www.cisco.com/techsupport">http://www.cisco.com/techsupport</a>

# Feature Information for Tunnel Authentication via RADIUS on Tunnel Terminator

The following table provides release information about the feature or features described in this module. This table lists only the software release that introduced support for a given feature in a given software release train. Unless noted otherwise, subsequent releases of that software release train also support that feature.

Use Cisco Feature Navigator to find information about platform support and Cisco software image support. To access Cisco Feature Navigator, go to [www.cisco.com/go/cfn](http://www.cisco.com/go/cfn). An account on Cisco.com is not required.

**Table 7** Feature Information for Tunnel Authentication via RADIUS on Tunnel Terminator

Feature Name	Releases	Feature Information
Tunnel Authentication via RADIUS on Tunnel Terminator	12.2(15)B 12.3(4)T	<p>The Tunnel Authentication via RADIUS on Tunnel Terminator feature allows tunnel authentication and authorization to occur through a remote RADIUS server instead of local configuration on the tunnel terminator.</p> <p>In 12.2(15)B, this feature was introduced on the Cisco 6400 series, Cisco 7200 series, and Cisco 7400 series.</p> <p>In 12.3(4)T, this feature was integrated into the Cisco IOS.</p> <p>The following commands were introduced or modified: <b>vpdn tunnel authorization network</b>, <b>vpdn tunnel authorization password</b>, <b>vpdn tunnel authorization virtual-template</b>.</p>

## Glossary

**L2TP** --Layer 2 Tunnel Protocol. A Layer 2 tunneling protocol that enables an ISP or other access service to create a virtual tunnel to link customer remote sites or remote users with corporate home networks. In particular, a network access server (NAS) at the ISP point of presence (POP) exchanges PPP messages with the remote users and communicates by L2F or L2TP requests and responses with the customer tunnel server to set up tunnels.

**LAC** --L2TP access concentrator. A network access server (NAS) to which the client directly connects and through which PPP frames are tunneled to the L2TP network server (LNS). The LAC need only implement the media over which L2TP is to operate to pass traffic to one or more LNSs. The LAC may tunnel any



protocol carried within PPP. The LAC initiates incoming calls and receives outgoing calls. A LAC is analogous to an L2F network access server.

**LNS** --L2TP network server. A termination point for L2TP tunnels and an access point where PPP frames are processed and passed to higher layer protocols. An LNS can operate on any platform that terminates PPP. The LNS handles the server side of the L2TP protocol. L2TP relies only on the single medium over which L2TP tunnels arrive. The LNS initiates outgoing calls and receives incoming calls. An LNS is analogous to a home gateway in L2F technology.

Cisco and the Cisco logo are trademarks or registered trademarks of Cisco and/or its affiliates in the U.S. and other countries. To view a list of Cisco trademarks, go to this URL: [www.cisco.com/go/trademarks](http://www.cisco.com/go/trademarks). Third-party trademarks mentioned are the property of their respective owners. The use of the word partner does not imply a partnership relationship between Cisco and any other company. (1110R)

Any Internet Protocol (IP) addresses and phone numbers used in this document are not intended to be actual addresses and phone numbers. Any examples, command display output, network topology diagrams, and other figures included in the document are shown for illustrative purposes only. Any use of actual IP addresses or phone numbers in illustrative content is unintentional and coincidental.



## Local AAA Server

---

The Local AAA Server feature allows you to configure your router so that user authentication and authorization attributes currently available on AAA servers are available locally on the router. The attributes can be added to existing framework, such as the local user database or subscriber profile. The local AAA server provides access to the complete dictionary of Cisco IOS supported attributes.

- [Finding Feature Information, page 51](#)
- [Prerequisites for Local AAA Server, page 51](#)
- [Information About Local AAA Server, page 51](#)
- [How to Configure Local AAA Server, page 53](#)
- [Configuration Examples for Local AAA Server, page 58](#)
- [Additional References, page 60](#)
- [Feature Information for Local AAA Server, page 61](#)

## Finding Feature Information

Your software release may not support all the features documented in this module. For the latest caveats and feature information, see [Bug Search Tool](#) and the release notes for your platform and software release. To find information about the features documented in this module, and to see a list of the releases in which each feature is supported, see the feature information table at the end of this module.

Use Cisco Feature Navigator to find information about platform support and Cisco software image support. To access Cisco Feature Navigator, go to [www.cisco.com/go/cfn](http://www.cisco.com/go/cfn). An account on Cisco.com is not required.

## Prerequisites for Local AAA Server

- Before using this feature, you must have the **aaa new-model** command enabled.

## Information About Local AAA Server

- [Local Authorization Attributes Overview, page 52](#)
- [Local AAA Attribute Support, page 52](#)
- [AAA Attribute Lists, page 52](#)
- [Validation of Attributes, page 53](#)

## Local Authorization Attributes Overview

The AAA subsystem (authentication, authorization, and accounting) is responsible for managing all supported attributes that are available to the various services within the Cisco IOS software. As such, it maintains its own local dictionary of all supported attributes. However, prior to Cisco IOS Release 12.3(14)T, most of these authorization options were not available for local (on-box) authorizations.

## Local AAA Attribute Support

Effective with Cisco IOS Release 12.3(14)T, you can configure your router so that AAA authentication and authorization attributes currently available on AAA servers are made available on existing Cisco IOS devices. The attributes can be added to existing framework, such as the local user database or subscriber profile. For example, an attribute list can now be added to an existing username, providing the ability for the local user database to act as a local AAA server. For situations in which the local username list is relatively small, this flexibility allows you to provide complete user authentication or authorization locally within the Cisco IOS software without having a AAA server. This ability can allow you to maintain your user database locally or provide a failover local mechanism without having to sacrifice policy options when defining local users.

A subscriber profile allows domain-based clients to have policy applied at the end-user service level. This flexibility allows common policy to be set for all users under a domain in one place and applied there whether or not user authorization is done locally. Effective with Cisco IOS Release 12.3(14)T, an attribute list can be added to the subscriber profile, allowing the profile to apply all attributes that can be applied to services using AAA servers. Attributes that are configured under the AAA attribute list are merged with the existing attributes that are generated with the existing subscriber profile and passed to the Subscriber Server Switch (SSS) framework for application.

**Note**

---

Accounting is still done on a AAA server and is not supported by this feature.

---

## AAA Attribute Lists

AAA attribute lists define user profiles that are local to the router. Every attribute that is known to the AAA subsystem is made available for configuration.

The AAA attributes that are defined in the AAA attribute list are standard RADIUS or TACACS+ attributes. However, they are in the Cisco IOS internal format for that attribute. The attributes must be converted from the RADIUS format (for a RADIUS case) to the Cisco IOS AAA interface format. TACACS+ attributes are generally identical to the Cisco IOS AAA interface format.

- [Converting from RADIUS Format to Cisco IOS AAA Format, page 52](#)

## Converting from RADIUS Format to Cisco IOS AAA Format

You can use the **show aaa attributes protocol radius** command to get the Cisco IOS AAA format of the Internet Engineering Task Force (IETF) RADIUS attribute. The **show** command output provides a complete list of all the AAA attributes that are supported.

**Note**

The conversion from RADIUS to internal AAA is done internally within the AAA framework. RADIUS vendor-specific attributes (VSAs) are usually accurately reflected during conversion. TACACS+ attributes are also usually identical to the local attributes and do not require the conversion process. However, IETF numbered attributes and some special VSAs often require the conversion process.

## Validation of Attributes

Attributes are not validated at configuration. The AAA subsystem “knows” only the format that is expected by the services when the service defines a given attribute inside a definition file. However, it cannot validate the attribute information itself. This validation is done by a service when it first uses the attribute. This validation applies whether the AAA server is RADIUS or TACACS+. Thus, if you are not familiar with configuring a AAA server, it is advisable that you test your attribute list on a test device with the service that will be using the list before configuring and using it in a production environment.

## How to Configure Local AAA Server

- [Defining a AAA Attribute List, page 53](#)
- [Defining a Subscriber Profile, page 55](#)
- [Monitoring and Troubleshooting a Local AAA Server, page 56](#)

## Defining a AAA Attribute List

To define an AAA attribute list, perform the following steps.

### SUMMARY STEPS

1. **enable**
2. **configure terminal**
3. **aaa attribute list** *list-name*
4. **attribute type** {name} {value} [**service** *service*] [**protocol** *protocol*]
5. **attribute type** {name} {value} [**service** *service*] [**protocol** *protocol*]
6. **attribute type** {name} {value} [**service** *service*] [**protocol** *protocol*]
7. **attribute type** {name} {value}
8. **attribute type** {name} {value}
9. **attribute type** {name} {value}

## DETAILED STEPS

Command or Action	Purpose
<p><b>Step 1</b> <code>enable</code></p> <p><b>Example:</b></p> <pre>Router&gt; enable</pre>	<p>Enables privileged EXEC mode.</p> <ul style="list-style-type: none"> <li>Enter your password if prompted.</li> </ul>
<p><b>Step 2</b> <code>configure terminal</code></p> <p><b>Example:</b></p> <pre>Router# configure terminal</pre>	<p>Enters global configuration mode.</p>
<p><b>Step 3</b> <code>aaa attribute list list-name</code></p> <p><b>Example:</b></p> <pre>Router (config)# aaa attribute list TEST</pre>	<p>Defines a AAA attribute list.</p>
<p><b>Step 4</b> <code>attribute type {name} {value} [service service] [protocol protocol]</code></p> <p><b>Example:</b></p> <pre>Router (config-attr-list)# attribute type addr-pool poolname service ppp protocol ip</pre>	<p>Defines an IP address pool to use.</p>
<p><b>Step 5</b> <code>attribute type {name} {value} [service service] [protocol protocol]</code></p> <p><b>Example:</b></p> <pre>Router (config-attr-list)# attribute type ip-unnumbered loopbacknumber service ppp protocol ip</pre>	<p>Defines the loopback interface to use.</p>
<p><b>Step 6</b> <code>attribute type {name} {value} [service service] [protocol protocol]</code></p> <p><b>Example:</b></p> <pre>Router (config-attr-list)# attribute type vrf-id vrfname service ppp protocol ip</pre>	<p>Defines the virtual route forwarding (VRF) to use.</p>
<p><b>Step 7</b> <code>attribute type {name} {value}</code></p> <p><b>Example:</b></p> <pre>Router (config-attr-list)# attribute type ppp-authen-list aalistname</pre>	<p>Defines the AAA authentication list to use.</p>

Command or Action	Purpose
<p><b>Step 8</b> <code>attribute type {name} {value}</code></p> <p><b>Example:</b></p> <pre>Router (config-attr-list)# attribute type ppp-author-list aalistname</pre>	Defines the AAA authorization list to use.
<p><b>Step 9</b> <code>attribute type {name} {value}</code></p> <p><b>Example:</b></p> <pre>Router (config-attr-list)# attribute type ppp-acct-list "aaa list name"</pre>	Defines the AAA accounting list to use.

## Defining a Subscriber Profile

To define a subscriber profile, perform the following steps.



### Note

RADIUS users should use the **show aaa attributes** command to map the RADIUS version of the particular attribute to the Cisco IOS XE AAA version of the string attribute. See the example Mapping from the RADIUS Version of a Particular Attribute to the Cisco IOS AAA Version Example.

### SUMMARY STEPS

1. **enable**
2. **configure terminal**
3. **subscriber authorization enable**
4. **policy-map type service *domain-name***
5. **service local**
6. **exit**
7. **aaa attribute list *list-name***

### DETAILED STEPS

Command or Action	Purpose
<p><b>Step 1</b> <code>enable</code></p> <p><b>Example:</b></p> <pre>Router&gt; enable</pre>	<p>Enables privileged EXEC mode.</p> <ul style="list-style-type: none"> <li>• Enter your password if prompted.</li> </ul>

Command or Action	Purpose
<b>Step 2</b> <code>configure terminal</code>  <b>Example:</b> <pre>Router# configure terminal</pre>	Enters global configuration mode.
<b>Step 3</b> <code>subscriber authorization enable</code>  <b>Example:</b> <pre>Router (config)# subscriber authorization enable</pre>	Enables subscriber authorization.
<b>Step 4</b> <code>policy-map type service domain-name</code>  <b>Example:</b> <pre>Router (config)# policy-map type example.com</pre>	Specifies the username domain that has to be matched and enters subscriber profile configuration mode.
<b>Step 5</b> <code>service local</code>  <b>Example:</b> <pre>Router (subscriber-profile)# service local</pre>	Specifies that local subscriber authorization should be performed.
<b>Step 6</b> <code>exit</code>  <b>Example:</b> <pre>Router (subscriber-profile)# exit</pre>	Exits subscriber profile configuration mode.
<b>Step 7</b> <code>aaa attribute list list-name</code>  <b>Example:</b> <pre>Router (config)# aaa attribute list TEST</pre>	Defines the AAA attribute list from which RADIUS attributes are retrieved.

## Monitoring and Troubleshooting a Local AAA Server

The following debug commands may be helpful in monitoring and troubleshooting, especially to ensure that domain-based service authorization is being triggered and that location authorization is being called on the local AAA server, which triggers the service.

**SUMMARY STEPS**

1. enable
2. debug aaa authentication
3. debug aaa authorization
4. debug aaa per-user
5. debug ppp authentication
6. debug ppp error
7. debug ppp forward
8. debug ppp negotiation
9. debug radius
10. debug sss error

**DETAILED STEPS**

	<b>Command or Action</b>	<b>Purpose</b>
<b>Step 1</b>	<b>enable</b>  <b>Example:</b> Router> enable	Enables privileged EXEC mode. <ul style="list-style-type: none"> <li>• Enter your password if prompted.</li> </ul>
<b>Step 2</b>	<b>debug aaa authentication</b>  <b>Example:</b> Router# debug aaa authentication	Displays the methods of authentication being used and the results of these methods.
<b>Step 3</b>	<b>debug aaa authorization</b>  <b>Example:</b> Router# debug aaa authorization	Displays the methods of authorization being used and the results of these methods.
<b>Step 4</b>	<b>debug aaa per-user</b>  <b>Example:</b> Router# debug aaa per-user	Displays information about PPP session per-user activities.
<b>Step 5</b>	<b>debug ppp authentication</b>  <b>Example:</b> Router# debug ppp authentication	Indicates whether a client is passing authentication.



	Command or Action	Purpose
Step 6	<b>debug ppp error</b>  <b>Example:</b> Router (config)# debug ppp error	Displays protocol errors and error statistics that are associated with PPP connection negotiation and operation.
Step 7	<b>debug ppp forward</b>  <b>Example:</b> Router# debug ppp forward	Displays who is taking control of a session.
Step 8	<b>debug ppp negotiation</b>  <b>Example:</b> Router# debug ppp negotiation	Displays PPP packets sent during PPP startup, where PPP options are negotiated.
Step 9	<b>debug radius</b>  <b>Example:</b> Router# debug radius	Displays information about the RADIUS server.
Step 10	<b>debug sss error</b>  <b>Example:</b> Router# debug sss error	Displays diagnostic information about errors that may occur during SSS call setup.

## Configuration Examples for Local AAA Server

- [Local AAA Server Example, page 58](#)
- [Mapping from the RADIUS Version of a Particular Attribute to the Cisco IOS AAA Version Example, page 59](#)

### Local AAA Server Example

The following example shows a Point to Point over Ethernet (PPPoE) group named “bba-group” that is configured for subscriber profile cisco.com (thus, any user with the domain name cisco.com will execute the subscriber profile cisco.com authorization policy). The cisco.com subscriber profile is configured to attach the AAA attribute list “TEST,” which has both “ip vrf forwarding” and “ip unnumbered” configured for PPP service under Link Control Protocol (LCP) negotiation. This configuration will essentially cause

the named attributes to be applied on the session with the cisco.com domain under the bba-group “pppoe grp1.”

```

aaa authentication ppp template1 local
aaa authorization network template1 local
!
aaa attribute list TEST
  attribute type interface-config "ip unnumbered FastEthernet0" service ppp protocol lcp
  attribute type interface-config "ip vrf forwarding blue" service ppp protocol lcp
!
ip vrf blue
  description vrf blue template1
  rd 1:1
  route-target export 1:1
  route-target import 1:1
!
subscriber authorization enable
!
policy-map type service example.com
  service local
  aaa attribute list TEST
!
bba-group pppoe grp1
  virtual-template 1
  service profile example.com
!
interface Virtual-Template1
  no ip address
  no snmp trap link-status
  no peer default ip address
  no keepalive
  ppp authentication pap template1
  ppp authorization template1
!

```



#### Note

In some versions of Cisco IOS software, it is better to use the explicit attribute instead of interface- config because it provides better scalability (full VAccess interfaces are not required, and sub interfaces could be used to provide the service). In such a case, you might configure “attribute type ip-unnumbered ‘FastEthernet0’ service ppp protocol ip” instead of “attribute type interface-config ‘ip unnumbered FastEthernet0’ service ppp protocol lcp.”

## Mapping from the RADIUS Version of a Particular Attribute to the Cisco IOS AAA Version Example

The following output example of the **show aaa attributes** command lists RADIUS attributes, which can be used when configuring this feature.

```

Router#
show aaa attributes protocol radius
IETF defined attributes:
  Type=4      Name=acl      Format=Ulong
  Protocol:RADIUS
  Unknown    Type=11      Name=Filter-Id      Format=Binary
Converts attribute 11 (Filter-Id) of type Binary into an internal attribute
named "acl" of type Ulong. As such, one can configure this attributes locally
by using the attribute type "acl."
Cisco VSA attributes:
  Type=157   Name=interface-config      Format=String
Simply expects a string for the attribute of type "interface-config."

```

**Note**

The **aaa attribute list** command requires the Cisco IOS AAA version of an attribute, which is defined in the “Name” field above.

## Additional References

- [Related Document](#), page 60
- [Standards](#), page 60
- [MIBs](#), page 60
- [RFCs](#), page 61
- [Technical Assistance](#), page 61

## Related Document

Related Topic	Document Title
AAA, AAA attribute lists, AAA method lists, and subscriber profiles	Configuring Local AAA Server feature module and the User Database--Domain to VRF in <i>Cisco 10000 Series Broadband Aggregation and Leased-Line Configuration Guide</i>
Cisco IOS security commands	<i>Cisco IOS Security Command Reference</i>

## Standards

Standard	Title
None	--

## MIBs

MIB	MIBs Link
None	<p><a href="http://www.cisco.com/go/mibs">http://www.cisco.com/go/mibs</a> To locate and download MIBs for selected platforms, Cisco IOS releases, and feature sets, use Cisco MIB Locator found at the following URL:</p> <p><a href="http://www.cisco.com/go/mibs">http://www.cisco.com/go/mibs</a></p>

## RFCs

RFC	Title
None	--

## Technical Assistance

Description	Link
<p>The Cisco Support website provides extensive online resources, including documentation and tools for troubleshooting and resolving technical issues with Cisco products and technologies.</p> <p>To receive security and technical information about your products, you can subscribe to various services, such as the Product Alert Tool (accessed from Field Notices), the Cisco Technical Services Newsletter, and Really Simple Syndication (RSS) Feeds.</p> <p>Access to most tools on the Cisco Support website requires a Cisco.com user ID and password.</p>	<p><a href="http://www.cisco.com/techsupport">http://www.cisco.com/techsupport</a></p>

## Feature Information for Local AAA Server

The following table provides release information about the feature or features described in this module. This table lists only the software release that introduced support for a given feature in a given software release train. Unless noted otherwise, subsequent releases of that software release train also support that feature.

Use Cisco Feature Navigator to find information about platform support and Cisco software image support. To access Cisco Feature Navigator, go to [www.cisco.com/go/cfn](http://www.cisco.com/go/cfn). An account on Cisco.com is not required.

**Table 8**      **Feature Information for Local AAA Server**

Feature Name	Releases	Feature Information
Local AAA Server	Cisco IOS XE Release 3.3SG	The Local AAA Server feature allows you to configure your router so that user authentication and authorization attributes currently available on AAA servers are available locally on the router. The attributes can be added to existing framework, such as the local user database or subscriber profile. The local AAA server provides access to the complete dictionary of Cisco IOS supported attributes.

Cisco and the Cisco logo are trademarks or registered trademarks of Cisco and/or its affiliates in the U.S. and other countries. To view a list of Cisco trademarks, go to this URL: [www.cisco.com/go/trademarks](http://www.cisco.com/go/trademarks). Third-party trademarks mentioned are the property of their respective owners. The use of the word partner does not imply a partnership relationship between Cisco and any other company. (1110R)

Any Internet Protocol (IP) addresses and phone numbers used in this document are not intended to be actual addresses and phone numbers. Any examples, command display output, network topology diagrams, and other figures included in the document are shown for illustrative purposes only. Any use of actual IP addresses or phone numbers in illustrative content is unintentional and coincidental.



## Per-User QoS via AAA Policy Name

---

The Per-User QoS via AAA Policy Name feature provides the ability to download a policy name that describes quality of service (QoS) parameters for a user session from a RADIUS server and apply them for the particular session.

- [Finding Feature Information, page 63](#)
- [Prerequisites for Per-User QoS via AAA Policy Name, page 63](#)
- [Information About Per-User QoS via AAA Policy Name, page 63](#)
- [How to Configure Per-User QoS via AAA Policy Name, page 64](#)
- [Configuration Example for Per-User QoS via AAA Policy Name, page 65](#)
- [Additional References, page 65](#)
- [Feature Information for Per-User QoS via AAA Policy Name, page 66](#)
- [Glossary, page 67](#)

### Finding Feature Information

Your software release may not support all the features documented in this module. For the latest caveats and feature information, see [Bug Search Tool](#) and the release notes for your platform and software release. To find information about the features documented in this module, and to see a list of the releases in which each feature is supported, see the feature information table at the end of this module.

Use Cisco Feature Navigator to find information about platform support and Cisco software image support. To access Cisco Feature Navigator, go to [www.cisco.com/go/cfn](http://www.cisco.com/go/cfn). An account on Cisco.com is not required.

### Prerequisites for Per-User QoS via AAA Policy Name

Before you configure the Per-User QoS via AAA Policy Name feature, you must locally define on your router the policy whose name is received from the RADIUS server.

### Information About Per-User QoS via AAA Policy Name

Effective with Cisco IOS Release 12.2(15)T, separate Cisco vendor-specific attributes (VSAs) are added for the service map.

- [VSAs Added for Per-User QoS via AAA Policy Name, page 64](#)

## VSAs Added for Per-User QoS via AAA Policy Name

Two new VSAs have been added for the service map, and the VSAs will bypass the parser while applying the policy for a particular user or session. The new VSAs are as follows:

- vendor-id=9 (Cisco) Vendor type 37 for upstream traffic to input policy name
- vendor-id=9 (Cisco) Vendor type 38 for downstream traffic to output policy name

## How to Configure Per-User QoS via AAA Policy Name

To configure per-user QoS, use the authentication, authorization, and accounting (AAA) policy name that you have received from the RADIUS server. To configure QoS policy, refer to the [How to Configure Per-User QoS via AAA Policy Name, page 64](http://www.cisco.com/univercd/cc/td/doc/product/software/ios122/122cgcr/fdial_c/fnsprt11/dafprusr.htm). [http://www.cisco.com/univercd/cc/td/doc/product/software/ios122/122cgcr/fdial\\_c/fnsprt11/dafprusr.htm](http://www.cisco.com/univercd/cc/td/doc/product/software/ios122/122cgcr/fdial_c/fnsprt11/dafprusr.htm)

- [Monitoring and Maintaining Per-User QoS via AAA Policy Name, page 64](#)

## Monitoring and Maintaining Per-User QoS via AAA Policy Name

To monitor and maintain per-user QoS using the AAA policy name, use the following **debug** commands:

### SUMMARY STEPS

1. **enable**
2. **debug aaa authorization**
3. **debug aaa per-user**

### DETAILED STEPS

	Command or Action	Purpose
Step 1	<b>enable</b>  <b>Example:</b> Router> enable	Enables privileged EXEC mode. <ul style="list-style-type: none"> <li>• Enter your password if prompted.</li> </ul>
Step 2	<b>debug aaa authorization</b>  <b>Example:</b> Router# debug aaa authorization	Displays information about AAA/TACACS+ authorization.
Step 3	<b>debug aaa per-user</b>  <b>Example:</b> Router# debug aaa per-user	Displays information about per-user QoS parameters.

# Configuration Example for Per-User QoS via AAA Policy Name

The following example shows per-user QoS being configured using the AAA policy name “policy\_class\_1\_2”:

```
!NAS configuration
class-map match-all class1
  match access-group 101
class-map match-all class2
  match qos-group 4
  match access-group 101
policy-map policy_class_1_2
  class class1
    bandwidth 3000
    queue-limit 30
  class class2
    bandwidth 2000
  class class-default
    bandwidth 500
!RADIUS Profile Configuration
peruser_qos_1 Password = "password1"
  Service-Type = Framed,
  Framed-Protocol = PPP,
  Cisco:Cisco-avpair = "ip:sub-policy-In=ssspolicy"
!ssspolicy in the above line is the name of the policy.
peruser_qos_2 Password = "password1"
  Service-Type = Framed,
  Framed-Protocol = PPP,
  Cisco:Cisco-avpair = "ip:sub-policy-Out=ssspolicy"
```

## Additional References

The following sections provide references related to the Per-User QoS via AAA Policy Name.

### Related Documents

Related Topic	Document Title
AAA per-user and QoS configurations and information about the <b>policy-map</b> command	<ul style="list-style-type: none"> <li>Configuring Per-User Configuration</li> <li><i>Cisco IOS Security Command Reference</i></li> </ul>

### Standards

Standards	Title
None	--



**MIBs**

MIBs	MIBs Link
None	To locate and download MIBs for selected platforms, Cisco IOS releases, and feature sets, use Cisco MIB Locator found at the following URL: <a href="http://www.cisco.com/go/mibs">http://www.cisco.com/go/mibs</a>

**RFCs**

RFCs	Title
No new or modified RFCs are supported by this feature.	--

**Technical Assistance**

Description	Link
<p>The Cisco Support website provides extensive online resources, including documentation and tools for troubleshooting and resolving technical issues with Cisco products and technologies.</p> <p>To receive security and technical information about your products, you can subscribe to various services, such as the Product Alert Tool (accessed from Field Notices), the Cisco Technical Services Newsletter, and Really Simple Syndication (RSS) Feeds.</p> <p>Access to most tools on the Cisco Support website requires a Cisco.com user ID and password.</p>	<a href="http://www.cisco.com/techsupport">http://www.cisco.com/techsupport</a>

## Feature Information for Per-User QoS via AAA Policy Name

The following table provides release information about the feature or features described in this module. This table lists only the software release that introduced support for a given feature in a given software release train. Unless noted otherwise, subsequent releases of that software release train also support that feature.

Use Cisco Feature Navigator to find information about platform support and Cisco software image support. To access Cisco Feature Navigator, go to [www.cisco.com/go/cfn](http://www.cisco.com/go/cfn). An account on Cisco.com is not required.

**Table 9**      **Feature Information for Per-User QoS via AAA Policy Name**

Feature Name	Releases	Feature Information
Per-User QoS via AAA Policy Name	12.2(15)B 12.2(15)T 12.2(33)SRC	You can use the Per-User QoS via AAA Policy Name feature to download a policy name that describes QoS parameters for a user session from a RADIUS server and apply them for a particular session.

## Glossary

**RADIUS** --Remote Authentication Dial-In User Service. RADIUS is a database for authenticating modem and ISDN connections and for tracking connection time.

**VSA** --vendor-specific attribute. A VSA is an attribute that has been implemented by a particular vendor. It uses the attribute Vendor-Specific to encapsulate the resulting AV pair: essentially, Vendor-Specific = protocol:attribute = value.

Any Internet Protocol (IP) addresses and phone numbers used in this document are not intended to be actual addresses and phone numbers. Any examples, command display output, network topology diagrams, and other figures included in the document are shown for illustrative purposes only. Any use of actual IP addresses or phone numbers in illustrative content is unintentional and coincidental. © 2000-2009 Cisco Systems, Inc. All rights reserved.

Cisco and the Cisco logo are trademarks or registered trademarks of Cisco and/or its affiliates in the U.S. and other countries. To view a list of Cisco trademarks, go to this URL: [www.cisco.com/go/trademarks](http://www.cisco.com/go/trademarks). Third-party trademarks mentioned are the property of their respective owners. The use of the word partner does not imply a partnership relationship between Cisco and any other company. (1110R)

Any Internet Protocol (IP) addresses and phone numbers used in this document are not intended to be actual addresses and phone numbers. Any examples, command display output, network topology diagrams, and other figures included in the document are shown for illustrative purposes only. Any use of actual IP addresses or phone numbers in illustrative content is unintentional and coincidental.





## RADIUS Progress Codes

---

The RADIUS Progress Codes feature adds additional progress codes to RADIUS attribute 196 (Ascend-Connect-Progress), which indicates a connection state before a call is disconnected through progress codes.

- [Finding Feature Information, page 69](#)
- [Prerequisites for RADIUS Progress Codes, page 69](#)
- [Information About RADIUS Progress Codes, page 69](#)
- [How to Configure RADIUS Progress Codes, page 70](#)
- [Additional References, page 72](#)
- [Feature Information for RADIUS Progress Codes, page 73](#)
- [Glossary, page 73](#)

### Finding Feature Information

Your software release may not support all the features documented in this module. For the latest caveats and feature information, see [Bug Search Tool](#) and the release notes for your platform and software release. To find information about the features documented in this module, and to see a list of the releases in which each feature is supported, see the feature information table at the end of this module.

Use Cisco Feature Navigator to find information about platform support and Cisco software image support. To access Cisco Feature Navigator, go to [www.cisco.com/go/cfn](http://www.cisco.com/go/cfn). An account on Cisco.com is not required.

### Prerequisites for RADIUS Progress Codes

Before attribute 196 (Ascend-Connect-Progress) can be sent in accounting “start” and “stop” records, you must perform the following tasks:

- Enable AAA.
- Enable exec, network, or resource accounting.

For information on completing these tasks, refer to the AAA sections of the *Cisco IOS Security Configuration Guide: Securing User Services*, Release 15.0.

When these tasks are completed, attribute 196 is active by default.

### Information About RADIUS Progress Codes

Attribute 196 is sent in network, exec, and resource accounting “start” and “stop” records. This attribute can facilitate call failure debugging because each progress code identifies accounting information relevant

to the connection state of a call. The attribute is activated by default; when an accounting “start” or “stop” accounting record is requested, authentication, authorization, and accounting (AAA) adds attribute 196 into the record as part of the standard attribute list. Attribute 196 is valuable because the progress codes, which are sent in accounting “start” and “stop” records, facilitate the debugging of call failures.

**Note**

In accounting “start” records, attribute 196 does not have a value.

**Table 10** *Newly Supported Progress Codes for Attribute 196*

Code	Description
10	Modem allocation and negotiation is complete; the call is up.
30	The modem is up.
33	The modem is waiting for result codes.
41	The max TNT is establishing the TCP connection by setting up a TCP clear call.
60	Link control protocol (LCP) is the open state with PPP and IP Control Protocol (IPCP) negotiation; the LAN session is up.
65	PPP negotiation occurs and, initially, the LCP negotiation occurs; LCP is in the open state.
67	After PPP negotiation with LCP in the open state occurs, IPCP negotiation begins.

**Note**

Progress codes 33, 30, and 67 are generated and seen through debugs on the NAS; all other codes are generated and seen through debugs and the accounting record on the RADIUS server.

## How to Configure RADIUS Progress Codes

No configuration is required to configure RADIUS Progress Codes.

- [How to Verify Attribute 196, page 70](#)

## How to Verify Attribute 196

To verify attribute 196 in accounting “start” and “stop” records, perform the following steps.

**SUMMARY STEPS**

1. **enable**
2. **debug aaa accounting**
3. **show radius statistics**

**DETAILED STEPS**

	<b>Command or Action</b>	<b>Purpose</b>
<b>Step 1</b>	<b>enable</b>  <b>Example:</b> Router> enable	Enables privileged EXEC mode. <ul style="list-style-type: none"> <li>• Enter your password if prompted.</li> </ul>
<b>Step 2</b>	<b>debug aaa accounting</b>  <b>Example:</b> Router# debug aaa accounting	Displays information on accountable events as they occur.
<b>Step 3</b>	<b>show radius statistics</b>  <b>Example:</b> Router# debug aaa authorization	Displays the RADIUS statistics for accounting and authentication packets.

- [Troubleshooting Tips, page 71](#)

**Troubleshooting Tips**

The following example is a sample debug output from the **debug ppp negotiation** command. This debug output is used to verify that accounting “stop” records have been generated and that attribute 196 (Ascend-Connect-Progress) has a value of 65.

```
Tue Aug 7 06:21:03 2001
NAS-IP-Address = 10.0.58.62
NAS-Port = 20018
Vendor-Specific = ""
NAS-Port-Type = ISDN
User-Name = "peer_16a"
Called-Station-Id = "5213124"
Calling-Station-Id = "5212175"
Acct-Status-Type = Stop
Acct-Authentic = RADIUS
Service-Type = Framed-User
Acct-Session-Id = "00000014"
Framed-Protocol = PPP
Framed-IP-Address = 172.16.0.2
Acct-Input-Octets = 3180
Acct-Output-Octets = 3186
Acct-Input-Packets = 40
Acct-Output-Packets = 40
Ascend-Connect-Pr = 65
```

```
Acct-Session-Time = 49
Acct-Delay-Time = 0
Timestamp = 997190463
Request-Authenticator = Unverified
```

## Additional References

The following sections provide references related to RADIUS Progress Codes.

### Related Documents

Related Topic	Document Title
Cisco IOS Security commands	<i>Cisco IOS Security Command Reference</i>
Configuring Accounting	Configuring Accounting module
RADIUS Attributes	RADIUS Attributes Overview and RADIUS IETF Attributes module

### Standards

Standard	Title
None	--

### MIBs

MIB	MIBs Links
None	To locate and download MIBs for selected platforms, Cisco IOS releases, and feature sets, use Cisco MIB Locator found at the following URL: <a href="http://www.cisco.com/go/mibs">http://www.cisco.com/go/mibs</a>

### RFCs

RFC	Title
None	---

### Technical Assistance

Description	Link
<p>The Cisco Support website provides extensive online resources, including documentation and tools for troubleshooting and resolving technical issues with Cisco products and technologies.</p> <p>To receive security and technical information about your products, you can subscribe to various services, such as the Product Alert Tool (accessed from Field Notices), the Cisco Technical Services Newsletter, and Really Simple Syndication (RSS) Feeds.</p> <p>Access to most tools on the Cisco Support website requires a Cisco.com user ID and password.</p>	<p><a href="http://www.cisco.com/techsupport">http://www.cisco.com/techsupport</a></p>

## Feature Information for RADIUS Progress Codes

The following table provides release information about the feature or features described in this module. This table lists only the software release that introduced support for a given feature in a given software release train. Unless noted otherwise, subsequent releases of that software release train also support that feature.

Use Cisco Feature Navigator to find information about platform support and Cisco software image support. To access Cisco Feature Navigator, go to [www.cisco.com/go/cfn](http://www.cisco.com/go/cfn). An account on Cisco.com is not required.

**Table 11** Feature Information for RADIUS Progress Codes

Feature Name	Releases	Feature Information
RADIUS Progress Codes	Cisco IOS XE Release 3.3SG	The RADIUS Progress Codes feature adds additional progress codes to RADIUS attribute 196 (Ascend-Connect-Progress), which indicates a connection state before a call is disconnected through progress codes.

## Glossary

**AAA** --authentication, authorization, and accounting. Suite of network security services that provide the primary framework through which access control can be set up on your Cisco router or access server.

**attribute** --RADIUS Internet Engineering Task Force (IETF) attributes are the original set of 255 standard attributes that are used to communicate AAA information between a client and a server. Because IETF attributes are standard, the attribute data is predefined and well known; thus all clients and servers who exchange AAA information through IETF attributes must agree on attribute data such as the exact meaning of the attributes and the general bounds of the values for each attribute.



EXEC accounting--Provides information about user EXEC terminal sessions of the network access server.

**IPCP** --IP Control Protocol. A protocol that establishes and configures IP over PPP.

**LCP** --link control protocol. A protocol that establishes, configures, and tests data-link connections for use by PPP.

network accounting--Provides information for all PPP, Serial Line Internet Protocol (SLIP), or AppleTalk Remote Access Protocol (ARAP) sessions, including packet and byte counts.

**PPP** --Point-to-Point Protocol. Successor to SLIP that provides router-to-router and host-to-network connections over synchronous and asynchronous circuits. Whereas SLIP was designed to work with IP, PPP was designed to work with several network layer protocols, such as IP, IPX, and ARA. PPP also has built-in security mechanisms, such as CHAP and PAP. PPP relies on two protocols: LCP and NCP.

**RADIUS**--Remote Authentication Dial-In User Service. RADIUS is a distributed client/server system that secures networks against unauthorized access. In the Cisco implementation, RADIUS clients run on Cisco routers and send authentication requests to a central RADIUS server that contains all user authentication and network service access information.

resource accounting--Provides “start” and “stop” records for calls that have passed user authentication, and provides “stop” records for calls that fail to authenticate.

Cisco and the Cisco logo are trademarks or registered trademarks of Cisco and/or its affiliates in the U.S. and other countries. To view a list of Cisco trademarks, go to this URL: [www.cisco.com/go/trademarks](http://www.cisco.com/go/trademarks). Third-party trademarks mentioned are the property of their respective owners. The use of the word partner does not imply a partnership relationship between Cisco and any other company. (1110R)

Any Internet Protocol (IP) addresses and phone numbers used in this document are not intended to be actual addresses and phone numbers. Any examples, command display output, network topology diagrams, and other figures included in the document are shown for illustrative purposes only. Any use of actual IP addresses or phone numbers in illustrative content is unintentional and coincidental.



## RADIUS Timeout Set During Pre-Authentication

Some call sessions for Internet Service Provider (ISP) subscribers are billed through authentication, authorization, and accounting (AAA) messages in a prepaid time model. When these subscribers are preauthenticated, a RADIUS server checks for any remaining credit in the prepaid time model and sets a session timeout based on the credit available. The RADIUS Timeout Set During Pre-Authentication feature is useful in situations where the PPP authentication that follows the preauthentication phase of these call sessions does not return the Session-Timeout value (RADIUS attribute 27), and therefore allows the ISP to add call setup time to the subscriber's bill.

- [Finding Feature Information, page 75](#)
- [Prerequisites for the RADIUS Timeout Set During Pre-Authentication Feature, page 75](#)
- [Information About the RADIUS Timeout Set During Pre-Authentication Feature, page 76](#)
- [How to Configure the RADIUS Timeout Set During Pre-Authentication Feature, page 76](#)
- [Additional References, page 76](#)
- [Feature Information for RADIUS Timeout Set During Pre-Authentication, page 77](#)

### Finding Feature Information

Your software release may not support all the features documented in this module. For the latest caveats and feature information, see [Bug Search Tool](#) and the release notes for your platform and software release. To find information about the features documented in this module, and to see a list of the releases in which each feature is supported, see the feature information table at the end of this module.

Use Cisco Feature Navigator to find information about platform support and Cisco software image support. To access Cisco Feature Navigator, go to [www.cisco.com/go/cfn](http://www.cisco.com/go/cfn). An account on Cisco.com is not required.

### Prerequisites for the RADIUS Timeout Set During Pre-Authentication Feature

- This feature is specific to RADIUS. Basic AAA authentication and preauthentication must be configured.
- Preauthentication and normal PPP authentication are required for legacy functionality.

# Information About the RADIUS Timeout Set During Pre-Authentication Feature

- [RADIUS Attribute 27 and the PPP Authentication Phase, page 76](#)

## RADIUS Attribute 27 and the PPP Authentication Phase

The RADIUS Timeout Set During Pre-Authentication feature was developed for ISPs that want to bill dial-in subscribers for call setup time and the entire duration of the call session. These subscribers are billed through AAA messages in a prepaid time model. When the subscribers are preauthenticated, a RADIUS server checks for any remaining credit in the prepaid time model and sets a session timeout (in minutes or seconds) based on the credit available. This time can range from a few seconds for ISDN users, to much longer for asynchronous dial-up subscribers.

Until the RADIUS Timeout Set During Pre-Authentication feature was developed, the value of RADIUS attribute 27, which is returned during the preauthentication phase of a call, was either ignored or overwritten during the PPP authentication phase. Even when the PPP authentication phase did not return a value for attribute 27, the old value obtained during the preauthentication phase was being ignored.

With the RADIUS Timeout Set During Pre-Authentication feature introduced for Cisco IOS Release 12.2(15)T, if the PPP authentication phase does not return a value for attribute 27, the old value that was returned during the preauthentication phase is saved and used to time out the session; attribute 27 is saved in a preauthentication database for future use. However, if the PPP authentication user profile has a session timeout configured and PPP authentication succeeds, the new value downloaded during PPP authentication overwrites the old attribute 27 value. By setting the session timeout value in the preauthentication phase itself, the service provider can bill the subscriber for the call setup time and the call duration.

## How to Configure the RADIUS Timeout Set During Pre-Authentication Feature

No new configuration is required. The RADIUS Timeout Set During Pre-Authentication feature is included in all Cisco platforms that support preauthentication, and that have RADIUS attribute 27, Session-Timeout, specified in a preauthentication user profile.

## Additional References

- The following sections provide references related to the RADIUS Timeout Set During Pre-Authentication feature.

### Related Documents

Related Topic	Document Title
RADIUS attributes and user profiles	RADIUS Attributes Overview and RADIUS IETF Attributes module

**Standards**

Standards	Title
None	--

**MIBs**

MIBs	MIBs Link
None	To locate and download MIBs for selected platforms, Cisco IOS releases, and feature sets, use Cisco MIB Locator found at the following URL: <a href="http://www.cisco.com/go/mibs">http://www.cisco.com/go/mibs</a>

**RFCs**

RFCs	Title
None	--

**Technical Assistance**

Description	Link
<p>The Cisco Support website provides extensive online resources, including documentation and tools for troubleshooting and resolving technical issues with Cisco products and technologies.</p> <p>To receive security and technical information about your products, you can subscribe to various services, such as the Product Alert Tool (accessed from Field Notices), the Cisco Technical Services Newsletter, and Really Simple Syndication (RSS) Feeds.</p> <p>Access to most tools on the Cisco Support website requires a Cisco.com user ID and password.</p>	<a href="http://www.cisco.com/techsupport">http://www.cisco.com/techsupport</a>

## Feature Information for RADIUS Timeout Set During Pre-Authentication

The following table provides release information about the feature or features described in this module. This table lists only the software release that introduced support for a given feature in a given software release train. Unless noted otherwise, subsequent releases of that software release train also support that feature.

Use Cisco Feature Navigator to find information about platform support and Cisco software image support. To access Cisco Feature Navigator, go to [www.cisco.com/go/cfn](http://www.cisco.com/go/cfn). An account on Cisco.com is not required.

**Table 12**      **Feature Information for RADIUS Timeout Set During Pre-Authentication**

Feature Name	Releases	Feature Information
RADIUS Timeout Set During Pre-Authentication	12.2(15)T 12.2(28)SB	<p>The RADIUS Timeout Set During Pre-Authentication feature is useful in situations where the PPP authentication that follows the preauthentication phase of these call sessions does not return the Session-Timeout value (RADIUS attribute 27), and therefore allows the ISP to add call setup time to the subscriber's bill.</p> <p>This feature was introduced in Cisco IOS Release 12.2(15)T.</p> <p>This feature was integrated into Cisco IOS Release 12.2(28)SB.</p>

Cisco and the Cisco logo are trademarks or registered trademarks of Cisco and/or its affiliates in the U.S. and other countries. To view a list of Cisco trademarks, go to this URL: [www.cisco.com/go/trademarks](http://www.cisco.com/go/trademarks). Third-party trademarks mentioned are the property of their respective owners. The use of the word partner does not imply a partnership relationship between Cisco and any other company. (1110R)

Any Internet Protocol (IP) addresses and phone numbers used in this document are not intended to be actual addresses and phone numbers. Any examples, command display output, network topology diagrams, and other figures included in the document are shown for illustrative purposes only. Any use of actual IP addresses or phone numbers in illustrative content is unintentional and coincidental.



## Per IP Subscriber DHCP Triggered RADIUS Accounting

---

The Per IP Subscriber DHCP Triggered RADIUS Accounting feature enables system administrators to track IP session activity on a per-subscriber basis and periodically extract subscriber accounting records. Transactions between the client and the RADIUS accounting server are authenticated via an Access Client module that maintains per-subscriber accounting statistics.

Per IP Subscriber RADIUS Accounting works with DHCP IP address assignment on Cisco 7600 series routers only, and it improves the authentication, authorization, and accounting (AAA) of broadband service delivery. Subscribers are attributed a unique AAA ID in addition to the unique ID created by DHCP in order to process secure START and STOP accounting messages and allow them to abstract accounting information in a client-server environment.

- [Finding Feature Information, page 79](#)
- [Prerequisites for Per IP Subscriber DHCP Triggered RADIUS Accounting, page 79](#)
- [Restrictions for Per IP Subscriber DHCP Triggered RADIUS Accounting, page 80](#)
- [Information About Per IP Subscriber DHCP Triggered RADIUS Accounting, page 80](#)
- [How to Configure Per IP Subscriber DHCP Triggered RADIUS Accounting, page 82](#)
- [Configuration Examples for Per IP Subscriber DHCP Triggered RADIUS Accounting, page 84](#)
- [Additional References, page 84](#)
- [Feature Information for Per IP Subscriber DHCP Triggered RADIUS Accounting, page 86](#)

### Finding Feature Information

Your software release may not support all the features documented in this module. For the latest caveats and feature information, see [Bug Search Tool](#) and the release notes for your platform and software release. To find information about the features documented in this module, and to see a list of the releases in which each feature is supported, see the feature information table at the end of this module.

Use Cisco Feature Navigator to find information about platform support and Cisco software image support. To access Cisco Feature Navigator, go to [www.cisco.com/go/cfn](http://www.cisco.com/go/cfn). An account on Cisco.com is not required.

### Prerequisites for Per IP Subscriber DHCP Triggered RADIUS Accounting

- You must configure accounting on a subset of RADIUS servers to which subscriber accounting statistics will be exported, as defined by the **aaa accounting** command.
- You must configure the number of IP address assignment leases offered to DHCP clients to only one per subscriber, as defined by the **ip dhcp limit lease per interface 1** command.

## Restrictions for Per IP Subscriber DHCP Triggered RADIUS Accounting

- The Per IP Subscriber DHCP Triggered RADIUS Accounting feature is enabled only for subscribers operating with Access Type interfaces on a Cisco 7600 series Broadband Remote Access Server (B-RAS).
- This feature does not support the collection of IP statistics from each source IP address. The feature collects IP statistics for each subinterface rather than each subscriber, and it is triggered only if the command to allow one IP address assignment via DHCP is configured.

## Information About Per IP Subscriber DHCP Triggered RADIUS Accounting

- [Per IP Subscriber DHCP Triggered RADIUS Accounting Network Topology, page 80](#)
- [Per IP Subscriber Triggered RADIUS Accounting Behavior, page 81](#)

## Per IP Subscriber DHCP Triggered RADIUS Accounting Network Topology

Per IP Subscriber DHCP Triggered RADIUS Accounting is implemented in a distributed networking environment, based on the following client-server components:

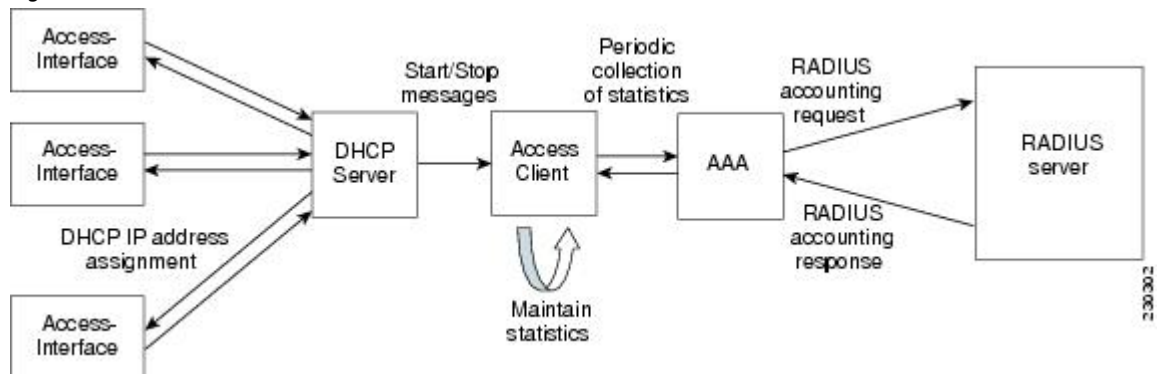
- Access Interface--Used by subscribers to operate on a Cisco 7600 router.
- DHCP Server--Grants permission to the DHCP client to use a particular IP address for a specified lease time.
- AAA Server--Transmits secure START and STOP accounting messages.

After the periodic timer is configured on the unit under test (UUT), the AAA module on the UUT sends an interim periodic update to the RADIUS server.

- RADIUS Server--Receives and responds to accounting requests.

The figure below shows how the Access Client, referred to as the “aaa-access-client” module, is initialized to serve as a client of the RADIUS accounting server. The module is independent of existing DHCP RADIUS Accounting modules.

**Figure 2** AAA Access Client Module Interaction



The Access Client comprises two sub-modules that enable improved IP session awareness, tracking, and reporting functionality:

- Access-Subscriber Management module (Access-Acct-Mgmt): Invoked by a successful DHCP IP assignment, this sub-module generates a unique AAA ID for each subscriber that combines with the DHCP unique ID to track an accounting session.
- Access-Subscriber Accounting Management (Access-Acct-Update): Invoked by the AAA server, this sub-module collects subscriber statistics and periodically reports on the accounting session.
- [Benefits of Per IP Subscriber DHCP Triggered RADIUS Accounting, page 81](#)

## Benefits of Per IP Subscriber DHCP Triggered RADIUS Accounting

### IP Session Awareness and Security

RADIUS accounting provides information about subscribers' network connections and usage in the form of accounting records.

The Access Client passes per-subscriber accounting statistics to the designated server, with a secure unique AAA ID. The periodic reporting of IP session activity gives system administrators the accounting information they need to make informed security, billing, and resource allocation decisions.

## Per IP Subscriber Triggered RADIUS Accounting Behavior

When a client with an Access Type of interface is configured for Per IP Subscriber RADIUS Accounting, the statistics collection and reporting mechanism can be invoked by the DHCP module. A successful DHCP IP assignment or release triggers three types of accounting events via the Access Client module:

- 1 RADIUS accounting start: An Accounting Start packet, ACCT\_START, is sent to the accounting server to flag the start of service delivery, the type of service being delivered, and the user it is being delivered to.
- 2 RADIUS accounting interim-update: An Accounting Interim Update packet, ACCT\_UPDATE, is sent to the accounting server to flag an ongoing client association and IP session activity.
- 3 RADIUS accounting stop: An Accounting Stop packet, ACCT\_STOP, is sent to the accounting server to flag the end of service delivery, the type of service that was delivered and optional statistics such as elapsed time, and input and output packets.

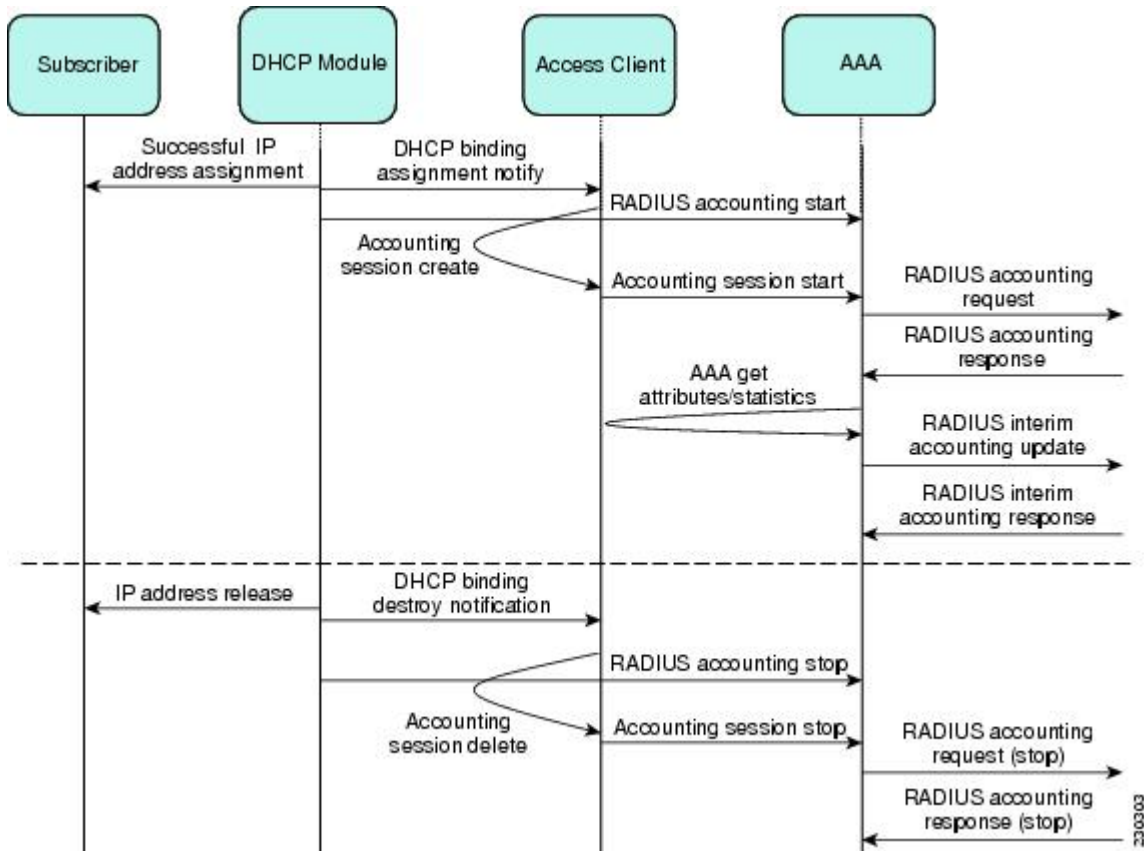
Accounting requests, for any packet type, are submitted to the RADIUS accounting server via the network, and are acknowledged in these forms:

- RADIUS Accounting Response (START)
- RADIUS Interim Accounting Response
- RADIUS Accounting Response (STOP)



The figure below shows the AAA Access Client process flow and how the client interacts with the required modules.

Figure 3 AAA Access Client Process Flow



## How to Configure Per IP Subscriber DHCP Triggered RADIUS Accounting

- [Configuring Method Lists for Per IP Subscriber DHCP Triggered RADIUS Accounting, page 82](#)

### Configuring Method Lists for Per IP Subscriber DHCP Triggered RADIUS Accounting

Each subscriber is configured on a per-interface basis. To invoke the Access Client and trigger the statistics collection mechanism on a subinterface, you must specify RADIUS as the accounting method and define a backup system for accounting in case the initial method fails. A method list is a named list describing the accounting methods to be queried in sequence.

Perform this task to configure a named method list for Per IP Subscriber DHCP Triggered RADIUS Accounting.

**SUMMARY STEPS**

1. **enable**
2. **configure terminal**
3. **interface** *type number* [*name-tag*] *access*
4. **encapsulation dot1q** *vlan-id* [**native**]
5. **ip address** *ip-address mask* [**secondary**]
6. **accounting dhcp source-ip** *aaa list method-list-name*
7. **end**

**DETAILED STEPS**

Command or Action	Purpose
<b>Step 1 enable</b>  <b>Example:</b> <pre>Router&gt; enable</pre>	Enables privileged EXEC mode. <ul style="list-style-type: none"> <li>• Enter your password if prompted.</li> </ul>
<b>Step 2 configure terminal</b>  <b>Example:</b> <pre>Router# configure terminal</pre>	Enters global configuration mode.
<b>Step 3 interface</b> <i>type number</i> [ <i>name-tag</i> ] <i>access</i>  <b>Example:</b> <pre>Router(config)# interface gigabitethernet 1/0/1.2 access</pre>	Configures an interface type and enters access interface configuration mode.
<b>Step 4 encapsulation dot1q</b> <i>vlan-id</i> [ <b>native</b> ]  <b>Example:</b> <pre>Router(config-subif)# encapsulation dot1q 102</pre>	Enables IEEE 802.1q encapsulation of traffic on a specified subinterface in a virtual LAN (VLAN).
<b>Step 5 ip address</b> <i>ip-address mask</i> [ <b>secondary</b> ]  <b>Example:</b> <pre>Router(config-subif)# ip address 10.0.2.1 255.255.255.0</pre>	Sets a primary or secondary IP address for an interface.

Command or Action	Purpose
<p><b>Step 6</b> <code>accounting dhcp source-ip aaa list <i>method-list-name</i></code></p> <p><b>Example:</b></p> <pre>Router(config-subif)# accounting dhcp source- ip aaa list default</pre>	<p>Enables the Per IP Subscriber DHCP RADIUS Accounting feature for DHCP clients, and configures accounting method lists that define the way accounting will be performed and the sequence in which methods are performed.</p> <p>Use the <i>method-list-name</i> argument to apply the accounting method list to a subinterface.</p>
<p><b>Step 7</b> <code>end</code></p> <p><b>Example:</b></p> <pre>Router(config-subif)# end</pre>	<p>Ends the current configuration session and returns to privileged EXEC mode.</p>

## Configuration Examples for Per IP Subscriber DHCP Triggered RADIUS Accounting

- [Subinterface RADIUS Accounting Configuration Example, page 84](#)

### Subinterface RADIUS Accounting Configuration Example

In the following example, the `aaa accounting` command for periodic RADIUS accounting is issued in the context of an IP address assignment via DHCP. A named method list is not explicitly defined, and the default method list automatically applies to the subinterface. If no method list is defined, no accounting takes place.

```
configure terminal
aaa new-model
radius-server host 75.0.1.1 auth-port 1645 acct-port 1646 key lab
radius-server key lab
!
aaa accounting network default start-stop group radius
aaa accounting update periodic 1
end
!
configure terminal
ip dhcp pool pool1
  network 10.0.1.0 255.255.255.0
  lease 0 0 3
!
configure terminal
interface GigabitEthernet 1/0/1.2 access
encapsulation dot1q 102
ip address 10.0.2.1 255.255.255.0
accounting dhcp source-ip aaa list default
end
```

## Additional References

The following sections provide references related to the Per IP Subscriber DHCP Triggered RADIUS Accounting feature.

### Related Documents

Related Topic	Document Title
Configuring Accounting	Configuring Accounting feature module.
Security commands: complete command syntax, command mode, command history, defaults, usage guidelines, and examples.	<i>Cisco IOS Security Command Reference</i>

### Standards

Standard	Title
None	--

### MIBs

MIB	MIBs Link
None	To locate and download MIBs for selected platforms, Cisco IOS releases, and feature sets, use Cisco MIB Locator found at the following URL: <a href="http://www.cisco.com/go/mibs">http://www.cisco.com/go/mibs</a>

### RFCs

RFC	Title
None	--

### Technical Assistance

Description	Link
<p>The Cisco Support website provides extensive online resources, including documentation and tools for troubleshooting and resolving technical issues with Cisco products and technologies.</p> <p>To receive security and technical information about your products, you can subscribe to various services, such as the Product Alert Tool (accessed from Field Notices), the Cisco Technical Services Newsletter, and Really Simple Syndication (RSS) Feeds.</p> <p>Access to most tools on the Cisco Support website requires a Cisco.com user ID and password.</p>	<a href="http://www.cisco.com/techsupport">http://www.cisco.com/techsupport</a>

## Feature Information for Per IP Subscriber DHCP Triggered RADIUS Accounting

The following table provides release information about the feature or features described in this module. This table lists only the software release that introduced support for a given feature in a given software release train. Unless noted otherwise, subsequent releases of that software release train also support that feature.

Use Cisco Feature Navigator to find information about platform support and Cisco software image support. To access Cisco Feature Navigator, go to [www.cisco.com/go/cfn](http://www.cisco.com/go/cfn). An account on Cisco.com is not required.

**Table 13** Feature Information for Per IP Subscriber DHCP Triggered RADIUS Accounting

Feature Name	Releases	Feature Information
Per IP Subscriber DHCP Triggered RADIUS Accounting	12.2(33)SRB	<p>The Per IP Subscriber DHCP Triggered RADIUS Accounting feature enables system administrators to track IP session activity on a per-subscriber basis and periodically extract subscriber accounting records.</p> <p>In 12.2(33)SRB, this feature was introduced on the Cisco 7600 router.</p> <p>The following command was introduced by this feature:  <b>accounting dhcp source-ip aaa list.</b></p>

Cisco and the Cisco logo are trademarks or registered trademarks of Cisco and/or its affiliates in the U.S. and other countries. To view a list of Cisco trademarks, go to this URL: [www.cisco.com/go/trademarks](http://www.cisco.com/go/trademarks). Third-party trademarks mentioned are the property of their respective owners. The use of the word partner does not imply a partnership relationship between Cisco and any other company. (1110R)

Any Internet Protocol (IP) addresses and phone numbers used in this document are not intended to be actual addresses and phone numbers. Any examples, command display output, network topology diagrams, and other figures included in the document are shown for illustrative purposes only. Any use of actual IP addresses or phone numbers in illustrative content is unintentional and coincidental.