



Managing Router Hardware

This chapter describes the concepts and tasks used to manage and configure the hardware components of a router running the Cisco IOS XR software.

This module contains the following topics:

- [RP Redundancy and Switchover, on page 1](#)
- [NPU Power Optimization, on page 6](#)
- [Dynamic Power Management, on page 11](#)
- [Storage Media Sanitization, on page 18](#)

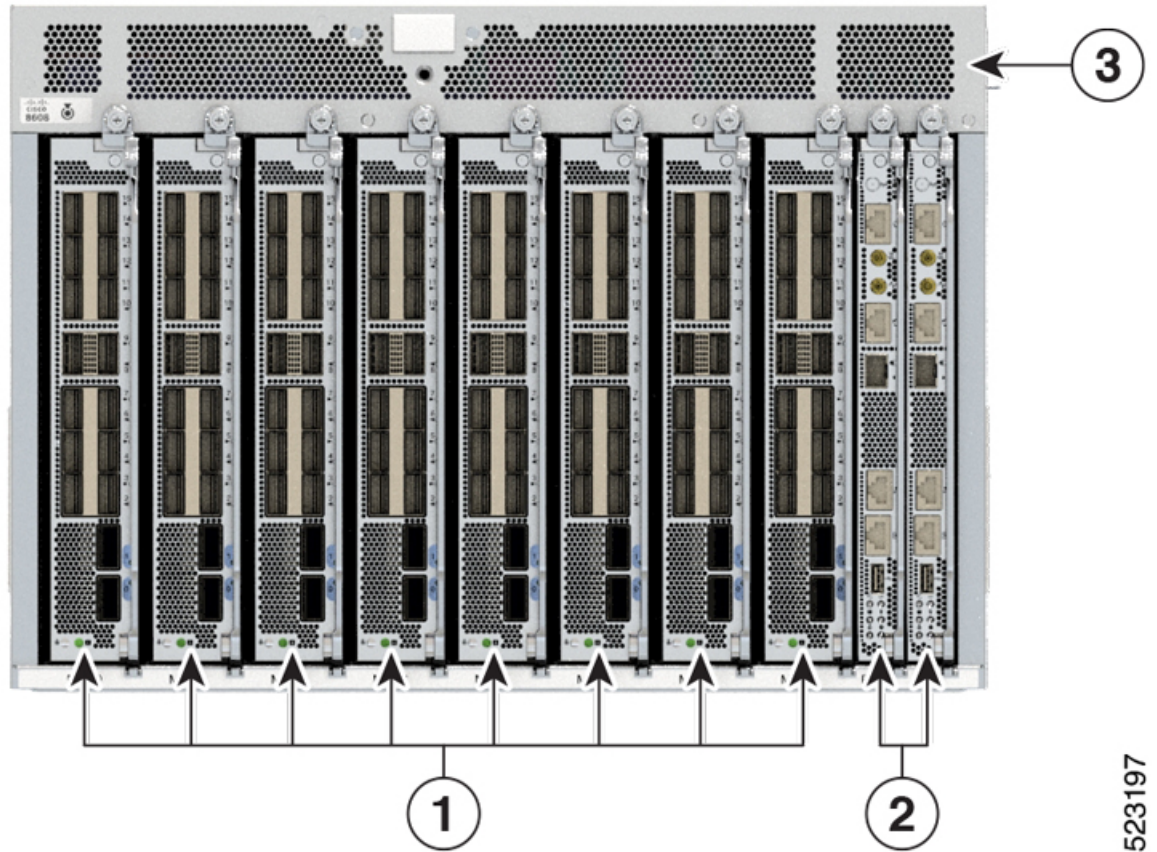
RP Redundancy and Switchover

This section describes RP redundancy and switchover commands and issues.

Establishing RP Redundancy

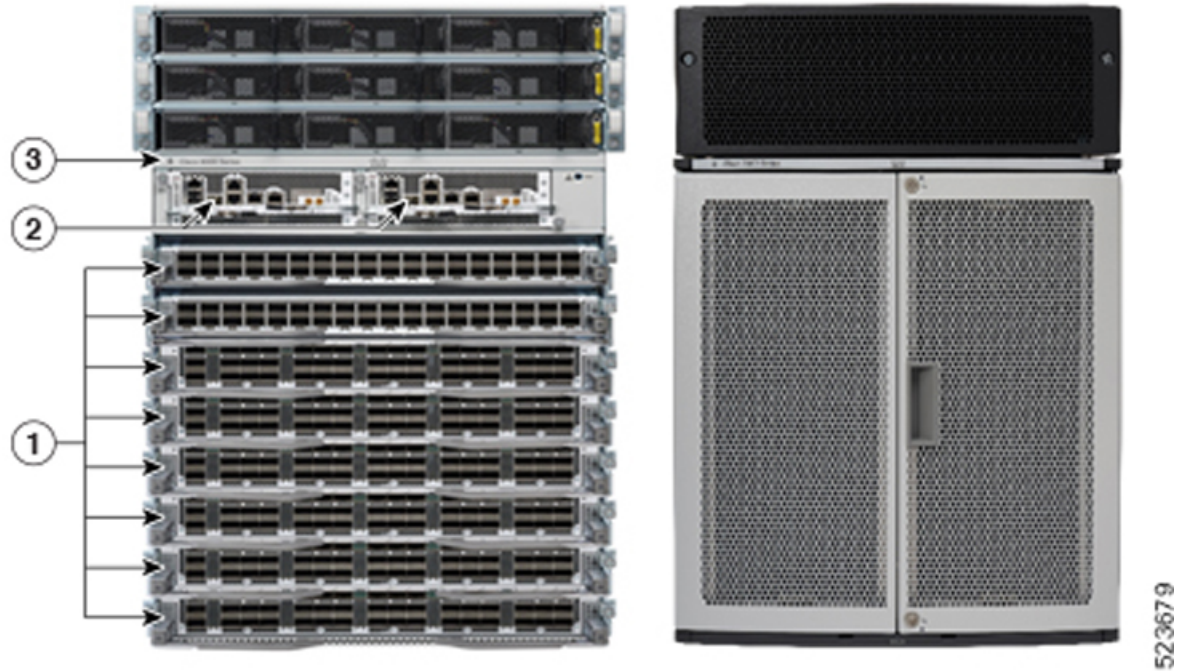
Your router has two slots for RPs: RP0 and RP1 (see [Figure 1: Redundant Set of RP Installed in Slots RP0 and RP1 in an Cisco 8608 8-Slot Centralized Chassis, on page 2](#) and [Figure 2: Redundant Set of RP Installed in Slots RP0 and RP1 in an Cisco 8808 8-Slot Distributed Chassis, on page 3](#)). RP0 is the slot on the left, facing the front of the chassis, and RP1 is the slot on right. These slots are configured for redundancy by default, and the redundancy cannot be eliminated. To establish RP redundancy, install RP into both slots.

Figure 1: Redundant Set of RP Installed in Slots RP0 and RP1 in a Cisco 8608 8-Slot Centralized Chassis



523197

Figure 2: Redundant Set of RP Installed in Slots RP0 and RP1 in an Cisco 8808 8-Slot Distributed Chassis



1	Modular Port Adaptors (MPAs)
2	Route Processors (RPs)
3	Chassis

Determining the Active RP in a Redundant Pair

During system startup, one RP in each redundant pair becomes the active RP. You can tell which RP is the active RP in the following ways:

- The active RP can be identified by the green Active LED on the faceplate of the card. When the Active LED turns on, it indicates that the RP is active and when it turns off, it indicates that the RP is in standby.
- The slot of the active RP is indicated in the CLI prompt. For example:

```
RP/0/RP1/CPU0:router#
```

In this example, the prompt indicates that you are communicating with the active RP in slot RP1.

- Enter the **show redundancy** command in EXEC mode to display a summary of the active and standby RP status. For example:

```
RP/0/RP0/CPU0:router# show redundancy

This node (0/RP0/CPU0) is in ACTIVE role
Partner node (0/RP1/CPU0) is in STANDBY role
Standby node in 0/RP1/CPU0 is ready
```

```

Reload and boot info
-----
RP reloaded Fri Apr  9 03:44:28 2004: 16 hours, 51 minutes ago
This node booted Fri Apr  9 06:19:05 2004: 14 hours, 16 minutes ago
Last switch-over Fri Apr  9 06:53:18 2004: 13 hours, 42 minutes ago
Standby node boot Fri Apr  9 06:54:25 2004: 13 hours, 41 minutes ago
Standby node last not ready Fri Apr  9 20:35:23 2004: 0 minutes ago
Standby node last ready Fri Apr  9 20:35:23 2004: 0 minutes ago
There have been 2 switch-overs since reload

```

Role of the Standby RP

The second RP to boot in a redundant pair automatically becomes the standby RP. While the active RP manages the system and communicates with the user interface, the standby RP maintains a complete backup of the software and configurations for all cards in the system. If the active RP fails or goes off line for any reason, the standby RP immediately takes control of the system.

Summary of Redundancy Commands

RP redundancy is enabled by default in the Cisco IOS XR software, but you can use the commands described in [Table 1: RP Redundancy Commands, on page 4](#) to display the redundancy status of the cards or force a manual switchover.

Table 1: RP Redundancy Commands

Command	Description
show redundancy	Displays the redundancy status of the RP. This command also displays the boot and switch-over history for the RP.
redundancy switchover	Forces a manual switchover to the standby RP. This command works only if the standby RP is installed and in the “ready” state.
show platform	Displays the status for node, including the redundancy status of the RP cards. In EXEC mode, this command displays status for the nodes assigned to the SDR. In administration EXEC mode, this command displays status for all nodes in the system.

Automatic Switchover

Automatic switchover from the active RP to the standby RP occurs only if the active RP encounters a serious system error, such as the loss of a mandatory process or a hardware failure. When an automatic switchover occurs, the RPs respond as follows:

- If a standby RP is installed and “ready” for switchover, the standby RP becomes the active RP. The original active RP attempts to reboot.
- If the standby RP is not in “ready” state, then both RPs reboot. The first RP to boot successfully assumes the role of active RP.

RP Redundancy During RP Reload

The **reload** command causes the active RP to reload the Cisco IOS XR software. When an RP reload occurs, the RPs respond as follows:

- If a standby RP is installed and “ready” for switchover, the standby RP becomes the active RP. The original active RP reboots and becomes the standby RP.
- If the standby RP is not in the “ready” state, then both RPs reboot. The first RP to boot successfully assumes the role of active RP.

Manual Switchover

If a standby RP is installed and ready for switchover, you can force a manual switchover using the **redundancy switchover** command or reloading the active RP using the **reload** command.

Manual Switchover Using the Reload Command

You can force a manual switchover from the active RP to the standby RP by reloading the active RP using the **reload** command. As active RP reboots, the current standby RP becomes active RP, and rebooting RP switches to standby RP.

```
RP/0/RP0/CPU0:router# reload
RP/0/RP1/CPU0:router#
```

Manual Switchover Using the Redundancy Switchover Command

You can force a manual switchover from the active RP to the standby RP using the **redundancy switchover** command.

If a standby RP is installed and ready for switchover, the standby RP becomes the active RP. The original active RP becomes the standby RP. In the following example, partial output for a successful redundancy switchover operation is shown:

```
RP/0/RP0/CPU0:router# show redundancy

This node (0/RP0/CPU0) is in ACTIVE role
Partner node (0/RP1/CPU0) is in STANDBY role
Standby node in 0/RP1/CPU0 is ready

RP/0/RP0/CPU0:router# redundancy switchover
Updating Commit Database. Please wait...[OK]
Proceed with switchover 0/RP0/CPU0 -> 0/RP1/CPU0? [confirm]
Initiating switch-over.
RP/0/RP0/CPU0:router#

<Your 'TELNET' connection has terminated>
```

In the preceding example, the Telnet connection is lost when the previously active RP resets. To continue management of the router, you must connect to the newly activated RP as shown in the following example:

```
User Access Verification

Username: xxxxx
```

```

Password: xxxxx
Last switch-over Sat Apr 15 12:26:47 2009: 1 minute ago

RP/0/RP1/CPU0:router#

```

If the standby RP is not in “ready” state, the switchover operation is not allowed. In the following example, partial output for a failed redundancy switchover attempt is shown:

```

RP/0/RP0/CPU0:router# show redundancy

Redundancy information for node 0/RP1/CPU0:
=====
Node 0/RP0/CPU0 is in ACTIVE role
Partner node (0/RP1/CPU0) is in UNKNOWN role

Reload and boot info
-----
RP reloaded Wed Mar 29 17:22:08 2009: 2 weeks, 2 days, 19 hours, 14 minutes ago
Active node booted Sat Apr 15 12:27:58 2009: 8 minutes ago
Last switch-over Sat Apr 15 12:35:42 2009: 1 minute ago
There have been 4 switch-overs since reload

RP/0/RP0/CPU0:router# redundancy switchover

Switchover disallowed: Standby node is not ready.

```

Communicating with a Standby RP

The active RP automatically synchronizes all system software, settings, and configurations with the standby RP.

If you connect to the standby RP through the console port, you can view the status messages for the standby RP. The standby RP does not display a CLI prompt, so you cannot manage the standby card while it is in standby mode.

If you connect to the standby RP through the management Ethernet port, the prompt that appears is for the active RP, and you can manage the router the same as if you had connected through the management Ethernet port on the active RP.

NPU Power Optimization

Table 2: Feature History Table

Feature Name	Release Information	Description
NPU Power Optimization	Release 7.3.15	This feature lets you choose a predefined NPU power mode based on your network's individual requirements, and consequently reducing NPU power consumption. The hw-module npu-power-profile command is introduced for this feature.

Cisco 8000 series routers are powered by Cisco Silicon One Q200 and Q100 series processors. Cisco Silicon One processors offer high performance, flexible, and power-efficient routing silicon in the market.

NPU Power Optimization feature helps to reduce NPU power consumption by running a processor in a predefined mode. There are three NPU power modes—high, medium, and low. Based on your network traffic and power consumption requirements, you can choose to run the processor in any one of the three NPU power modes.

- High: The router will use the maximum amount of power, resulting in the best possible performance.
- Medium: The router power consumption and performance levels are both average.
- Low: The router operates with optimal energy efficiency while providing a modest level of performance.



Note We recommend that you work with your Cisco account representatives before implementing this feature in your network.

On a Q200-based Cisco 8200 series chassis, you can configure an NPU power mode on the entire router.

On a Q200-based Cisco 8800 series chassis, you can configure an NPU power mode only on fabric cards and line cards.

The following table lists the supported hardware, and their default NPU power mode:

Table 3: Supported Hardware and Default Modes

Supported Hardware	Default NPU Power Mode
Cisco 8200 32x400 GE 1RU fixed chassis (8201-32FH)	High
88-LC0-36FH without MACSec, based on Q200 Silicon Chip	Medium
88-LC0-36FH-M with MACSec, based on Q200 Silicon Chip	Medium
8808-FC0 Fabric Card, based on Q200 Silicon Chip	Low
8818-FC0 Fabric Card, based on Q200 Silicon Chip	Medium



Caution We recommend that you use the default NPU power mode on your router.

Limitations

The NPU power optimization is not supported on the Q100-based systems.

The NPU Power Profile mode is not supported on the following Q200-based line cards:

Table 4: Limitation on Hardware and Power Profile Modes

Hardware	Power Profile Mode
88-LC0-36FH-M	High
88-LC0-34H14FH	High

Configuring NPU Power Mode

Configuring NPU power mode on a fixed chassis:

The following example shows how to configure an NPU power mode on a fixed chassis:

```
RP/0/RP0/CPU0:ios(config)#hw-module npu-power-profile high
RP/0/RP0/CPU0:ios(config)#commit

RP/0/RP0/CPU0:ios(config)#reload
```



Note Note: Reload the chassis for the configurations changes to take effect.

Verifying NPU power mode configuration on a fixed chassis:

Use the **show controllers npu driver** command to verify the NPU power mode configuration:

```
RP/0/RP0/CPU0:ios#show controllers npu driver location 0/RP0/CPU0
Mon Aug 24 23:29:34.302 UTC
=====
NPU Driver Information
=====
Driver Version: 1
SDK Version: 1.32.0.1
Functional role: Active,      Rack: 8203, Type: lcc, Node: 0
Driver ready      : Yes
NPU first started : Mon Aug 24 23:07:41 2020
Fabric Mode:
NPU Power profile: High
Driver Scope: Node
Respawn count    : 1
Availablity masks :
      card: 0x1,   asic: 0x1,   exp asic: 0x1
...

```

Configuring NPU power mode on a modular chassis

The following example shows how to configure an NPU power mode on a fabric card and a line card:

```
RP/0/RP0/CPU0:ios(config)#hw-module npu-power-profile card-type FC high
RP/0/RP0/CPU0:ios(config)#hw-module npu-power-profile card-type LC low location 0/1/cpu0
RP/0/RP0/CPU0:ios(config)#commit
```




Note For the configurations to take effect, you must:

- Reload a line card if the configuration is applied on the line card.
- Reload a router if the configuration is applied on a fabric card.

Verifying the NPU power mode configuration on a modular chassis

Use the **show controllers npu driver location** command to verify the NPU power mode configuration:

```
RP/0/RP0/CPU0:ios#show controllers npu driver location 0/1/CPU0
```

```
Functional role: Active,      Rack: 8808, Type: lcc, Node: 0/RP0/CPU0
Driver ready      : Yes
NPU first started : Mon Apr 12 09:57:27 2021
Fabric Mode: FABRIC/8FC
NPU Power profile: High
Driver Scope: Rack
Respawn count    : 1
Availability masks :
      card: 0xba,      ASIC: 0xcfcc,      exp ASIC: 0xcfcc
Weight distribution:
      Unicast: 80,      Multicast: 20
```

Process / Lib	Connection status	Registration status	Connection requests	DLL registration
FSDB	Active	Active	1	n/a
FGID	Active	Active	1	n/a
AEL	n/a	n/a	n/a	Yes
SM	n/a	n/a	n/a	Yes

```
Asics :
HP - HotPlug event, PON - Power On reset
HR - Hard Reset,    WB - Warm Boot
```

Asic inst. (R/S/A)	fap id	HP Slice state	Asic type	Admin state	Oper state	Asic state	Last init	PON (#)	HR (#)	FW Rev
0/FC1/2	202	1 UP	s123	UP	UP	NRML	PON	1	0	0x0000
0/FC1/3	203	1 UP	s123	UP	UP	NRML	PON	1	0	0x0000
0/FC3/6	206	1 UP	s123	UP	UP	NRML	PON	1	0	0x0000
0/FC3/7	207	1 UP	s123	UP	UP	NRML	PON	1	0	0x0000
0/FC4/8	208	1 UP	s123	UP	UP	NRML	PON	1	0	0x0000
0/FC4/9	209	1 UP	s123	UP	UP	NRML	PON	1	0	0x0000
0/FC5/10	210	1 UP	s123	UP	UP	NRML	PON	1	0	0x0000
0/FC5/11	211	1 UP	s123	UP	UP	NRML	PON	1	0	0x0000
0/FC7/14	214	1 UP	s123	UP	UP	NRML	PON	1	0	0x0000
0/FC7/15	215	1 UP	s123	UP	UP	NRML	PON	1	0	0x0000

```
SI Info :
```

Card	Board	SI Board	SI Param	Retimer SI	Retimer SI	Front Panel
	HW Version	Version	Version	Board Version	Param Version	PHY

FC1	0.22	1	6	NA	NA	NA
FC3	0.21	1	6	NA	NA	NA
FC4	0.21	1	6	NA	NA	NA
FC5	0.21	1	6	NA	NA	NA
FC7	0.21	1	6	NA	NA	NA

```

-----+
Functional role: Active,      Rack: 8808, Type: lcc, Node: 0/1/CPU0
Driver ready      : Yes
NPU first started : Mon Apr 12 09:58:10 2021
Fabric Mode: FABRIC/8FC
NPU Power profile: Low
Driver Scope: Node
Respawn count    : 1
Availablity masks :
    card: 0x1,    asic: 0x7,    exp asic: 0x7
Weight distribution:
    Unicast: 80,    Multicast: 20
-----+

```

Process / Lib	Connection status	Registration status	Connection requests	DLL registration
FSDB	Active	Active	1	n/a
FGID	Inactive	Inactive	0	n/a
AEL	n/a	n/a	n/a	Yes
SM	n/a	n/a	n/a	Yes

```

Asics :
HP - HotPlug event, PON - Power On reset
HR - Hard Reset,    WB - Warm Boot
-----+

```

Asic inst. (R/S/A)	fap id	HP slice	Asic state	Admin state	Oper state	Asic state	Last init	PON (#)	HR (#)	FW Rev
0/2/0	8	1	UP	npn	UP	UP	NRML	PON	1	0 0x0000
0/2/1	9	1	UP	npn	UP	UP	NRML	PON	1	0 0x0000
0/2/2	10	1	UP	npn	UP	UP	NRML	PON	1	0 0x0000

SI Info :

Card	Board	SI Board	SI Param	Retimer SI	Retimer SI	Front Panel
	HW Version	Version	Version	Board Version	Param Version	PHY
LC2	0.41	1	9	NA	NA	DEFAULT

Dynamic Power Management

Table 5: Feature History Table

Feature Name	Release Information	Description
Dynamic Power Management	Release 7.3.15	<p>The Dynamic Power Management feature considers certain dynamic factors before allocating power to the fabric and line cards.</p> <p>This feature has the following benefits:</p> <ul style="list-style-type: none"> • Reduces number of PSUs required by accurately representing the maximum power consumption • Improves PSU efficiency by providing more accurate power allocation <p>This feature thus optimizes power allocation and avoids overprovisioning power to a router.</p>
Dynamic Power Management	Release 7.3.2	<p>Previously available for fabric and line cards, this feature that helps avoid excess power allocation by considering dynamic factors before allocating power to them is now available for optical modules.</p> <p>To view the power allocation on a per port basis, a new command “show environment power allocated [details]” is introduced.</p>
Dynamic Power Management	Release 7.3.3	<p>The Dynamic Power Management feature is now supported on the following Cisco 8100 and 8200 series routers:</p> <ul style="list-style-type: none"> • Cisco 8201 • Cisco 8202 • Cisco 8201-32-FH • Cisco 8101-32-FH
Dynamic Power Management	Release 7.5.2	<p>The Cisco 8202-32FH-M router will now consider dynamic factors, such as optical modules, NPU power profile, and MACsec mode to enable improved power allocation and utilization.</p>

Prior to Cisco IOS XR Release 7.3.15, when Cisco 8000 series routers were powered on or reloaded, the power management feature reserved power to fabric cards and allocated maximum power to line cards. The

power management feature wouldn't consider dynamic factors, such as the type of fabric or line cards in the chassis, or whether a fabric or line card was present in a slot.

The Dynamic Power Management feature considers such dynamic factors before allocating power to the fabric and line cards.

This feature has the following benefits:

- Reduces number of PSUs required by accurately representing the maximum power consumption
- Improves PSU efficiency by providing more accurate power allocation

This feature thus optimizes power allocation and avoids overprovisioning power to a router.

This feature is supported on the following Cisco 8000 series routers:

- Cisco 8804, 8808, 8812, and 8818 routers
- Cisco 8201, 8202, 8201-32-FH, and 8202-32FH-M routers
- Cisco 8101-32-FH

By default, this feature is enabled on the router.

The Dynamic Power Management feature allocates the total power to a router and its fabric card or line card based on the following parameters:

- Number and type of fabric cards installed on the router
- Fabric cards operating modes (5FC or 8FC)
- Number and type of line cards installed on the router
- Combination of line card and fabric card types installed
- NPU power mode configured on a fabric card
- Number and type of optics installed (supported in Cisco IOS XR Software Release 7.3.2 and later)
- MACSec-enabled ports (supported from Cisco IOS XR Software Release 7.3.3 and later)

For details, see *Dynamic Power Management for MACSec-Enabled Ports* section in the *Configuring MACSec* chapter in the *System Security Configuration Guide for Cisco 8000 Series Routers*.

On 8202-32FH-M router, the Dynamic Power Management feature allocates the total power to a router based on the following parameters:

- Optical modules installed.
- NPU power profile. To identify the mode on which the router is operating, use the `hw-module npu-power-profile` command.
- MACSec mode. By default, MACSec mode is disabled on 8202-32FH-M router.



Note We recommend you work with your Cisco account representatives to calculate power requirements for the Cisco 8000 series router.

Power Allocation to Empty Card Slot

This feature allocates a minimum required power for all empty LC or FC slots. This minimum power is required to boot the CPU and FPGAs immediately when a card is inserted. The feature doesn't control booting up the CPU and FPGAs. Also, the minimum power is required to detect the card type before the feature decides if there's enough power to power up the data path.

For example, the following **show environment power** command output displays various LC or FC card statuses, and also shows allocated and used power.



Note The allocated power capacity shown in the following **show** command output isn't standard capacity. The allocated power capacity varies depending on various other factors.

```
Router# show environment power
Thu Apr 22 12:03:06.754 UTC
=====
CHASSIS LEVEL POWER INFO: 0
=====
Total output power capacity (N + 1)      : 9600W + 6300W
Total output power required              : 9241W
Total power input                        : 6146W
Total power output                       : 5826W
=====
```

Power Module	Supply Type	-----Input-----		-----Output---		Status
		Volts A/B	Amps A/B	Volts	Amps	
0/PT0-PM0	PSU6.3KW-HV	245.5/245.7	5.1/5.0	54.7	43.1	OK
0/PT0-PM1	PSU6.3KW-HV	0.0/245.2	0.0/7.4	54.3	31.7	OK
0/PT0-PM2	PSU6.3KW-HV	0.0/246.9	0.0/7.5	54.1	32.3	OK
Total of Power Modules:		6146W/25.0A		5826W/107.1A		

Location	Card Type	Power Allocated Watts	Power Used Watts	Status
0/RP0/CPU0	8800-RP	95	69	ON
0/RP1/CPU0	-	95	-	RESERVED
0/0/CPU0	88-LC0-36FH	796	430	ON
0/1/CPU0	-	102	-	RESERVED
0/2/CPU0	88-LC0-36FH	796	430	ON
0/3/CPU0	-	102	-	RESERVED
0/4/CPU0	-	102	-	RESERVED
0/5/CPU0	-	102	-	RESERVED
0/6/CPU0	-	102	-	RESERVED
0/7/CPU0	-	102	-	RESERVED
0/8/CPU0	-	102	-	RESERVED
0/9/CPU0	88-LC0-36FH	102	-	OFF
0/10/CPU0	-	102	-	RESERVED
0/11/CPU0	-	102	-	RESERVED
0/FC0	-	26	-	RESERVED
0/FC1	-	26	-	RESERVED
0/FC2	-	26	-	RESERVED
0/FC3	8812-FC	784	509	ON
0/FC4	8812-FC	784	503	ON
0/FC5	8812-FC	26	-	OFF
0/FC6	8812-FC	26	-	OFF
0/FC7	8812-FC	26	-	OFF

0/FT0	8812-FAN	1072	1000	ON
0/FT1	8812-FAN	1072	1012	ON
0/FT2	8812-FAN	1072	861	ON
0/FT3	8812-FAN	1072	1033	ON

This table describes the card slot statuses:

Table 6: Router Card Slot Status

Status	Description
RESERVED	When a slot is empty
OFF	When a card is inserted in a slot but power isn't allocated to the card
ON	When a card is allocated power and the card is in operational state

Low-Power Condition

When you insert an LC or FC in a card slot at the time when the router doesn't have enough power available to allocate to the new card, the dynamic power management feature doesn't provision power to the card. It raises the `ev_power_budget_not_ok` alarm, and gracefully shuts down the card.

In the following `show` command output, an FC inserted in the card slot location 0/FC6 is gracefully shut down due to lack of power:

```
Router# show shelfmgr history events location 0/FC6
Thu Apr 22 12:03:11.763 UTC
NODE NAME      : 0/FC6
CURRENT STATE  : CARD_SHUT_POWERED_OFF
TIME STAMP     : Apr 20 2021 16:49:52
-----
```

DATE	TIME (UTC)	EVENT	STATE
Apr 20 2021	16:49:52	ev_powered_off	CARD_SHUT_POWERED_OFF
Apr 20 2021	16:49:52	ev_device_offline	STATE_NOT_CHANGED
Apr 20 2021	16:49:52	ev_unmapped_event	STATE_NOT_CHANGED
Apr 20 2021	16:49:48	transient_condition	CARD_SHUTDOWN
Apr 20 2021	16:49:48	ev_check_card_down_reaso	CHECKING_DOWN_REASON
Apr 20 2021	16:49:48	ev_timer_expiry	CARD_SHUTDOWN_IN_PROGRESS
Apr 20 2021	16:48:46	ev_power_budget_not_ok	CARD_SHUTDOWN_IN_PROGRESS
Apr 20 2021	16:48:45	transient_condition	POWER_BUDGET_CHECK
Apr 20 2021	16:48:45	ev_fpd_upgrade_not_reqd	CARD_STATUS_CHECK_COMPLETE
Apr 20 2021	16:47:45	ev_card_status_check	CARD_STATUS_CHECK
Apr 20 2021	16:47:45	ev_card_info_rcvd	CARD_INFO_RCVD
Apr 20 2021	16:47:44	ev_device_online	DEVICE_ONLINE
Apr 20 2021	16:47:43	ev_timer_expiry	CARD_POWERED_ON
Apr 20 2021	16:47:33	ev_powered_on	CARD_POWERED_ON
Apr 20 2021	16:47:33	init	CARD_DISCOVERED

However, after an LC, FC, or chassis reload, the dynamic power management feature can't ensure that the same LCs, FCs, optics, or interfaces, which were operational earlier (before the reload), would become active again.



Note During a low-power condition, this feature doesn't borrow power from a redundant power supply.

Power Allocation to Optics

From Cisco IOS XR Release 7.3.2 onwards, power requirement for optics is also considered before allocating power to them.

To identify the power allocated for a particular interface, use the **show environment power allocated [details] location location** command.

When the optical modules are inserted, power is automatically allocated for that interface. If power has been allocated to the interface, then use the “**no shut**” command to enable the interface.

```
Router# show environment power allocated location 0/3/CPU0
Thu Oct 7 22:27:35.732 UTC
```

Location	Components	Power Allocated Watts
0/3/CPU0	Data-path	772
	OPTICS	138
	Total	910

```
Router# show environment power allocated details location 0/3/CPU0
Thu Oct 7 22:27:42.221 UTC
```

Location	Components	Power Allocated Watts
0/3/CPU0	Data-path	772
	0/3/0/0	3
	0/3/0/1	3
	0/3/0/2	3
	0/3/0/3	3
	0/3/0/4	3
	0/3/0/5	3
	0/3/0/6	3
	0/3/0/7	3
	0/3/0/8	3
	0/3/0/9	3
	0/3/0/10	3
	0/3/0/11	3
	0/3/0/12	3
	0/3/0/13	3
	0/3/0/14	3
	0/3/0/15	3
	0/3/0/16	3
	0/3/0/17	3
	0/3/0/18	3
	0/3/0/19	3
	0/3/0/20	3
	0/3/0/21	3
	0/3/0/22	3
	0/3/0/23	3
	0/3/0/24	3

```

0/3/0/25          3
0/3/0/26          3
0/3/0/27          3
0/3/0/28          3
0/3/0/29          3
0/3/0/30          3
0/3/0/31          3
0/3/0/32          3
0/3/0/33          3
0/3/0/34          3
0/3/0/35          3
0/3/0/36          3
0/3/0/37          3
0/3/0/38          3
0/3/0/39          3
0/3/0/40          3
0/3/0/41          3
0/3/0/42          3
0/3/0/43          3
0/3/0/44          3
0/3/0/46          3

```

```

=====
Total                910

```

When the power is not allocated to the interface, the following syslog error and alarms are displayed

```

!<--Syslog Error-->!
#LC/0/3/CPU0:Oct  7 22:46:48.114 UTC: optics_driver[165]: %PKT_INFRA-FM-3-FAULT_MAJOR :
ALARM_MAJOR :POWER ALLOCATION FAIL :DECLARE :0/3/CPU0: Optics0/3/0/44
LC/0/3/CPU0:Oct  7 22:46:48.114 UTC: optics_driver[165]:
%L2-OPTICS-2-QSFP_POWER_ALLOCATION_FAILURE : Not enough power available to enable Optics
0/3/0/44

```

```

!<--Alarm-->!
Router#show alarms brief system active
Thu Oct  7 22:47:19.569 UTC

```

```

-----
Active Alarms
-----

```

Location	Severity	Group	Set Time	Description
----------	----------	-------	----------	-------------

0/3/CPU0	Major	Software	10/07/2021 22:46:48 UTC	Optics0/3/0/44 - hw_optics: Lack of available power to enable the optical module
----------	-------	----------	-------------------------	--

0/3/CPU0	Major	Software	10/07/2021 22:47:06 UTC	Optics0/3/0/46 - hw_optics: Lack of available power to enable the optical module
----------	-------	----------	-------------------------	--

If power is not allocated to an interface and you attempt to enable that interface using the “**no shut**” command, the following syslog error is displayed:

```

LC/0/2/CPU0:Aug 30 18:01:14.930 UTC: eth_intf_ea[262]: %PLATFORM-VEEA-1-PORT_NOT_ENABLED :
Power not allocated to enable the interface HundredGigE0_2_0_6.

```

Power Allocation to Fixed-Port Routers

The following **show environment power** command output displays power information for fixed-port routers and components.


```

Router# show environment power
Wed Feb 16 21:05:10.001 UTC
=====
CHASSIS LEVEL POWER INFO: 0
=====
Total output power capacity (Group 0 + Group 1) : 1400W + 1400W
Total output power required : 1033W
Total power input : 390W
Total power output : 255W

Power Group 0:
=====
Power Supply -----Input-----Output--- Status
Module Type Volts Amps Volts Amps
=====
0/PM0 PSU1.4KW-ACPE 244.5 0.8 12.0 11.1 OK

Total of Group 0: 195W/0.8A 133W/11.1A

Power Group 1:
=====
Power Supply -----Input-----Output--- Status
Module Type Volts Amps Volts Amps
=====
0/PM1 PSU1.4KW-ACPE 244.2 0.8 12.0 10.2 OK

Total of Group 1: 195W/0.8A 122W/10.2A

=====
Location Card Type Power Power Status
Allocated Used
Watts Watts
=====
0/RP0/CPU0 8201 893 - ON
0/FT0 FAN-1RU-PE 28 - ON
0/FT1 FAN-1RU-PE 28 - ON
0/FT2 FAN-1RU-PE 28 - ON
0/FT3 FAN-1RU-PE 28 - ON
0/FT4 FAN-1RU-PE 28 - ON

```

To identify the power allocated for a particular interface, use the **show environment power allocated [details] location location** command.

```

Router# show environment power allocated location 0/RP0/CPU0
Wed Feb 16 21:05:21.360 UTC
=====
Location Components Power
Allocated
Watts
=====
0/RP0/CPU0 Data-path 858
OPTICS 35
=====
Total 893

```

```

Router# show environment power allocated details location 0/RP0/CPU0
Wed Feb 16 21:05:36.142 UTC
=====
Location Components Power
Allocated
Watts
=====
0/RP0/CPU0 Data-path 858

```

0/0/0/19	21
0/0/0/18	14
=====	
Total	893

Disabling Dynamic Power Management

By default, the dynamic power management is enabled on a router. The following example shows how to disable dynamic power management:

```
RP/0/RP0/CPU0:ios(config)#power-mgmt action disable
RP/0/RP0/CPU0:ios(config)#commit
```



Caution After disabling the dynamic power management feature, you must manage the router power on your own. So, use this command with caution.



Note To reenable dynamic power management, use the **no power-mgmt action disable** command.

Storage Media Sanitization

Table 7: Feature History Table

Feature Name	Release Information	Feature Description
Storage Media Sanitization	Release 7.5.1	<p>To comply with NIST SP 800-88 guidelines for Media Sanitization, it is important that your organization ensures that no easily reconstructible data is stored in the router and associated devices after it has left the control of your organization or is no longer protected by confidentiality categorization.</p> <p>With this feature, you can erase and overwrite any sensitive data, configuration, or keys present in the route processor or line card, ensuring media sanitization and preventing unauthorized data retrieval.</p>

When you identify an RP or line card for RMA, or you require to ship it outside your organization, a service personnel may not be available on-site to remove the card immediately. However, you can reset your RP or

line card to erase customer-sensitive data and let the RP or line card remain in the slot. The RP or line card shuts down automatically after the factory reset is complete.

Guidelines

- We recommend using **factory-reset** without performing **commit replace** for securely removing the files in the misc/config folder.
- The RP or line card shuts down automatically if the factory reset takes more than 30 minutes, you can perform the factory reset again. The console displays the following log message during automatic shutdown:

```
[ TIME ] Timed out starting Power-Off.  
[ !! ] Forcibly powering off as result of failure.
```

- If your router has dual RPs, and to perform the factory reset on both the RPs, first reset the standby RP from the active RP. After the reset is complete, the standby RP automatically shuts down, you can then reset the active RP.

Prerequisites

The RP or line card must be operational to perform factory reset.

Commands

Use the **factory-reset** command for erasing the following folders of RP or line card:

- /misc/disk1
- /misc/scratch
- /var/log
- /misc/config

Run the following command through the console port of the router to erase customer-sensitive data in the RP or line card:

factory-reset location <location-id> - erases customer-sensitive data in the specified location



Note Factory-reset logs are displayed on the console port of the node where the reset is performed.

The following steps explain how to reset your RP or line card to factory settings:

1. Erasing the RP or line card folder contents: Run the **factory-reset location** command to delete the encryption keys and erase the customer-sensitive data from the RP or line card.

The following example shows how to perform the factory-reset command on an RP:

```
Router#factory-reset location 0/RP1/CPU0  
Factory reset requested  
Started punching watchdog  
Started cleaning up mount point: /misc/scratch  
Started syncing folder: /misc/scratch  
Finished syncing folder: /misc/scratch  
Finished cleaning up mount point: /misc/scratch
```

```

factory_reset_stop.sh
+++++
Started cleaning up mount point: /var/log
Started syncing folder: /var/log
Finished syncing folder: /var/log
Finished cleaning up mount point: /var/log
factory_reset_stop.sh
+++++
Started cleaning up mount point: /misc/disk1
Started syncing folder: /misc/disk1
Finished syncing folder: /misc/disk1
Finished cleaning up mount point: /misc/disk1
factory_reset_stop.sh
+++++
Started cleaning up folder: /misc/config
UTC 2022 Started syncing folder: /misc/config
Finished syncing folder: /misc/config
Finished cleaning up folder: /misc/config
factory_reset_stop.sh
+++++
Started cleaning up folder: /var/xr/enc/misc/config
/var/xr/enc/misc/config not present
Finished cleaning up folder: /var/xr/enc/misc/config
factory_reset_stop.sh
+++++
Started cleaning up folder: /mnt/rootfs/misc/config
/mnt/rootfs/misc/config not present
Finished cleaning up folder: /mnt/rootfs/misc/config
factory_reset_stop.sh
+++++
Encrypted logical volume does not exist. Nothing to remove.
/usr/local/etc/fpga-functions: line 797: 10912 Terminated
/usr/local/etc/punch-wd.sh
Stopped punching watchdog

```

2. Verifying factory reset: Use the **show shelfmgr history events location** command to verify the successful completion of the factory-reset in the standby RP or line card.

The following example shows how to verify the factory-reset command:

```

RP/0/RP0/CPU0:Router#show shelfmgr history events location 0/RP1/CPU0
Tue Mar 15 01:45:56.402 UTC
NODE NAME      : 0/RP1/CPU0
CURRENT STATE  : CARD_SHUT_POWERED_OFF
TIME STAMP     : Mar 15 2022 01:44:47
-----
DATE           TIME (UTC)  EVENT                               STATE
-----
Mar 15 2022 01:44:47  ev_powered_off                       CARD_SHUT_POWERED_OFF
Mar 15 2022 01:44:47  transient_condition                   CARD_SHUTDOWN
Mar 15 2022 01:44:47  ev_check_card_down_reaso             CHECKING_DOWN_REASON
Mar 15 2022 01:44:47  ev_os_halted                         OS_HALTED
Mar 15 2022 01:44:43  ev_factory_reset_done                 FACTORY_RESET_DONE
Mar 15 2022 01:33:16  ev_factory_reset_started              FACTORY_RESET_IN_PROGRESS
Mar 15 2022 01:33:11  ev_os_halting                         OS_HALT_IN_PROGRESS
Mar 15 2022 01:33:10  ev_xr_shut                            START_OS_HALT
Mar 15 2022 01:33:09  ev_ack_ok                             STATE_NOT_CHANGED
Mar 15 2022 01:33:09  ev_graceful_shut                      CARD_SHUTDOWN_IN_PROGRESS
Mar 15 2022 00:55:31  ev_xr_ready                           XR_RUN

```