



Perform System Upgrade and Install Feature Packages

The system upgrade and package installation processes are executed using **install** commands on the router. The processes involve adding and activating the iso images (*.iso*), feature packages (*.rpm*), and software maintenance upgrade files (*.smu*) on the router. These files are accessed from a network server and then activated on the router. If the installed package or SMU causes any issue on the router, it can be uninstalled.

The topics covered in this chapter are:

- [Upgrading the System, on page 1](#)
- [Upgrading Features, on page 2](#)
- [Workflow for Install Process, on page 3](#)
- [Install Packages, on page 3](#)
- [Install Prepared Packages, on page 8](#)
- [Uninstall Packages, on page 11](#)

Upgrading the System

Upgrading the system is the process of installing a new version of the Cisco IOS XR operating system on the router. The router comes pre-installed with the Cisco IOS XR image. However, you can install the new version in order to keep router features up to date. The system upgrade operation is performed from the XR VM. However, during system upgrade, the operating systems that run both on the XR VM and the System Admin VM get upgraded.

The 1G interface flaps twice instead of once in the Modular Port Adapter (MPA) NC55-MPA-12T-S after you reload any of these NCS 55A2 Fixed Chassis - NCS-55A2-MOD-SL, NCS-55A2-MOD-HD-S, NCS-55A2-MOD-HX-S, or NCS-55A2-MOD-SE-S.



Note If an interface on a router does not have a configuration and is brought up by performing no-shut operation, then upon router reload, the interface state changes to **admin-shutdown** automatically.

System upgrade is done by installing a base package—Cisco IOS XR Unicast Routing Core Bundle. The file name for this bundle is *ncs5500-mini-x.iso*. Install this ISO image using **install** commands. For more information about the install process, see [Workflow for Install Process, on page 3](#).



Caution Do not perform any install operations when the router is reloading.
Do not reload the router during an upgrade operation.

For more information on upgrading the system and the RPMs, see *Manage Automatic Dependency* chapter.

Upgrading Features

Upgrading features is the process of deploying new features and software patches on the router. Feature upgrade is done by installing package files, termed simply, packages. Software patch installation is done by installing Software Maintenance Upgrade (SMU) files.

Installing a package on the router installs specific features that are part of that package. Cisco IOS XR software is divided into various software packages; this enables you to select the features to run on your router. Each package contains components that perform a specific set of router functions, such as routing, security, and so on.

For example, the components of the routing package are split into individual RPMs, such as BGP and OSPF. BGP is a mandatory RPM which is a part of the base software version and hence cannot be removed. Optional RPMs such as OSPF can be added and removed as required.

The naming convention of the package is `<platform>-<pkg>-<pkg version>-<release version>.<architecture>.rpm`. Standard packages are:

Feature	Package
Forwarding	ncs5500-fwding-1.0.0.0-<release-number>.x86_64.rpm
BGP	ncs5500-bgp-1.0.0.0-<release-number>.x86_64.rpm
mpls-te-rsvp	ncs5500-mpls-te-rsvp-1.0.0.0-<release-number>.x86_64.rpm
k9sec	ncs5500-k9sec-1.0.0.0-<release-number>.x86_64.rpm
mgb1	ncs5500-mgb1-2.0.0.0-<release-number>.x86_64.rpm
mpls	ncs5500-mpls-1.0.0.0-<release-number>.x86_64.rpm
infra	ncs5500-infra-1.0.0.0-<release-number>.x86_64.rpm
os	ncs5500-os-1.0.0.0-<release-number>.x86_64.rpm
routing	ncs5500-routing-1.0.0.0-<release-number>.x86_64.rpm
security	ncs5500-security-1.0.0.0-<release-number>.x86_64.rpm
os-support	ncs5500-os-support-1.0.0.0-<release-number>.x86_64.rpm

Package and SMU installation is performed using **install** commands. For more information about the install process, see [Install Packages, on page 3](#).

There are separate packages and SMUs for the XR VM and the System Admin VM. They can be identified by their filenames. The XR and System Admin packages and SMUs can be activated from XR and System Admin VMs.

For more information on upgrading the system and the RPMs, see *Cisco IOS XR Flexible Packaging Configuration Guide*.

Third-party SMUs

Consider these points while activating and deactivating third-party SMUs:

- To activate a third-party SMU you should have a corresponding base package.
- When you activate a third-party SMU, the corresponding third-party base package state is inactive, this is an expected behavior.
- To deactivate a third-party SMU, you should activate corresponding third-party base package.

Workflow for Install Process

The workflow for installation and uninstallation processes is depicted in this flowchart.

For installing a package, see [Install Packages, on page 3](#). For uninstalling a package, see [Uninstall Packages, on page 11](#).

Install Packages

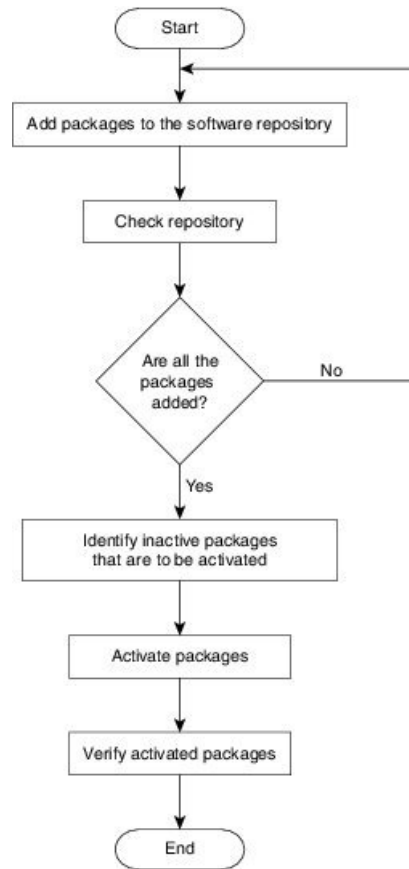
Complete this task to upgrade the system or install a patch. The system upgrade is done using an ISO image file, while the patch installation is done using packages and SMUs. This task is also used to install *.rpm* files. The *.rpm* file contains multiple packages and SMUs that are merged into a single file. The packaging format defines one RPM per component, without dependency on the card type.



Note The System Admin package and XR package can be executed using **install** commands in the System Admin EXEC mode and XR EXEC mode. All **install** commands are applicable in both these modes.

The workflow for installing a package is shown in this flowchart.

Figure 1: Installing Packages Workflow



Before you begin

- Configure and connect to the management port. The installable file is accessed through the management port. For details about configuring the management port, see [Configure the Management Port](#).
- Copy the package to be installed either on the router's hard disk or on a network server to which the router has access.

SUMMARY STEPS

1. Execute one of these:
 - **install add source** *<ftp transfer protocol>/package_path/ filename1 filename2 ...*
 - **install add source** *<ftp or sftp transfer protocol>//user@server:/package_path/ filename1 filename2 ...*
2. **show install request**
3. **show install repository**
4. **show install inactive**
5. Execute one of these:
 - **install activate** *package_name*

- **install activate id** *operation_id*

6. **show install active**
7. **install commit**

DETAILED STEPS

Step 1

Execute one of these:

- **install add source** *<ftp transfer protocol>/package_path/ filename1 filename2 ...*
- **install add source** *<ftp or sftp transfer protocol>://user@server:/package_path/ filename1 filename2 ...*

Example:

```
RP/0/RP0/CPU0:router#install add source /harddisk:/ncs5500-mpls-1.0.0.0-r60023I.x86_64.rpm
ncs5500-mgbl-2.0.0.0-r60023I.x86_64.rpm
```

or

```
RP/0/RP0/CPU0:router#install add source /harddisk:/ncs5500-mpls-1.0.0.0-<release-number>.x86_64.rpm
ncs5500-mgbl-2.0.0.0-<release-number>.x86_64.rpm
```

or

Note A space must be provided between the *package_path* and *filename*.

The software files are unpacked from the package and added to the software repository. This operation might take time depending on the size of the files being added. The operation is performed in asynchronous mode. The **install add** command runs in the background, and the EXEC prompt is returned as soon as possible.

Note The repositories for the XR VM and the System Admin VM are different. The system automatically adds a routing package to the XR VM repository and a system administration package to the System Admin VM repository.

Step 2

show install request

Example:

```
RP/0/RP0/CPU0:router#show install request
```

(Optional) Displays the operation ID of the add operation and its status. The operation ID can be later used to execute the **activate** command.

```
Install operation 8 is still in progress
```

For system administration packages, the remaining steps must be performed from the System Admin EXEC mode. Use the **admin** command to enter the System Admin EXEC mode.

Step 3

show install repository

Example:

```
RP/0/RP0/CPU0:router#show install repository
```

Displays packages that are added to the repository. Packages are displayed only after the `install add` operation is complete.

Step 4

show install inactive

Example:

```
RP/0/RP0/CPU0:router#show install inactive
```

Displays inactive packages that are present in the repository. Only inactive packages can be activated.

Step 5

Execute one of these:

- **install activate** *package_name*
- **install activate id** *operation_id*

Example:

```
RP/0/RP0/CPU0:router#install activate ncs5500-mpls-1.0.0.0-<release-number>.x86_64.rpm
ncs5500-mgbl-2.0.0.0-<release-number>.x86_64.rpm
```

or

```
RP/0/RP0/CPU0:router#install activate id 8
```

The *operation_id* is that of the **install add** operation. This command can also be run from System Admin mode. The package configurations are made active on the router. As a result, new features and software fixes take effect. This operation is performed in asynchronous mode. The **install activate** command runs in the background, and the EXEC prompt is returned.

If you use the operation ID, all packages that were added in the specified operation are activated together. For example, if 5 packages are added in operation 8, by executing **install activate id 8**, all 5 packages are activated together. You do not have to activate the packages individually.

Activation does not happen instantaneously, but takes some time. Activation of some SMUs require a manual reloading of the router. When such SMUs are activated, a warning message is displayed to perform reload. The components of the SMU get activated only after the reload is complete. Perform router reload immediately after executing the **install activate** command. If the SMU has dependency on both XR VM and System Admin VM, perform the reload after activating the SMU in both VMs so that they take effect simultaneously. To reload the router, use the **hw-module location all reload** command from the System Admin EXEC mode.

Step 6**show install active****Example:**

```
RP/0/RP0/CPU0:router#show install active
```

Displays packages that are active.

```
Node 0/RP0/CPU0 [RP]
Boot Partition: xr_lv70
Active Packages: 24
ncs5500-xr-<release-number> version=<release-number> [Boot image]
ncs5500-k9sec-1.0.0.0-<release-number>
ncs5500-m2m-2.0.0.0-<release-number>
ncs5500-mgbl-2.0.0.0-<release-number>
ncs5500-mpls-1.0.0.0-<release-number>
ncs5500-mpls-te-rsvp-1.0.0.0-<release-number>
ncs5500-infra-2.0.0.2-<release-number>.CSCxr22222
ncs5500-iosxr-fwding-2.0.0.2-<release-number>.CSCxr22222
ncs5500-iosxr-fwding-2.0.0.5-<release-number>.CSCxr90016
ncs5500-iosxr-fwding-2.0.0.1-<release-number>.CSCxr55555
ncs5500-iosxr-fwding-2.0.0.6-<release-number>.CSCxr90017
ncs5500-dpa-1.0.0.1-<release-number>.CSCxr90002
ncs5500-dpa-1.0.0.2-<release-number>.CSCxr90004
ncs5500-dpa-fwding-1.0.0.1-<release-number>.CSCxr90005
ncs5500-k9sec-1.0.0.1-<release-number>.CSCxr80008
ncs5500-os-support-1.0.0.1-<release-number>.CSCxr90013
```

```

ncs5500-os-support-1.0.0.2-<release-number>.CSCxr90014
ncs5500-fwding-1.0.0.2-<release-number>.CSCxr90011
ncs5500-fwding-1.0.0.5-<release-number>.CSCxr90019
ncs5500-fwding-1.0.0.1-<release-number>.CSCxr90010
ncs5500-fwding-1.0.0.4-<release-number>.CSCxr90018
ncs5500-mgbl-2.0.0.2-<release-number>.CSCxr80009
ncs5500-mp1s-1.0.0.1-<release-number>.CSCxr33333
ncs5500-mp1s-te-rsvp-1.0.0.2-<release-number>.CSCxr33335

```

From the result, verify that the same image and package versions are active on all RPs and LCs.

Step 7 install commit

Example:

```
RP/0/RP0/CPU0:router#install commit
```

Commits the XR newly active software. To commit both XR and System Admin software, use **install commit system**.

Installing Packages: Related Commands

Related Commands	Purpose
show install log	Displays the log information for the install process; this can be used for troubleshooting in case of install failure.
show install package	Displays the details of the packages that have been added to the repository. Use this command to identify individual components of a package.
install prepare	Makes pre-activation checks on an inactive package, to prepare it for activation.
show install prepare	Displays the list of package that have been prepared and are ready for activation.

What to do next

- After performing a system upgrade, upgrade FPD by using the **upgrade hw-module location all fpd all** command from the System Admin EXEC mode. The progress of FPD upgrade process can be monitored using the **show hw-module fpd** command in the System Admin EXEC mode. Reload the router after the FPD upgrade is completed.
- Verify the installation using the **install verify packages** command.
- Uninstall the packages or SMUs if their installation causes any issues on the router. See [Uninstall Packages, on page 11](#).



Note ISO images cannot be uninstalled. However, you can perform a system downgrade by installing an older ISO version.



Note If you are upgrading power supply modules for NC55-PWR-3KW-DC and NC55-PWR-3KW-2HV, ensure that you first upgrade SC IO FPGA by using **upgrade hw-module location <SC0/SC1> fpd all** command from Sysadmin prompt followed by the **upgrade hw-module location pm-all fpd** command, to upgrade FPD.

Finally use **hw-module location <SC0/SC1> reload** command from Sysadmin prompt to reload the shelf controller.

Install Prepared Packages

A system upgrade or feature upgrade is performed by activating the ISO image file, packages, and SMUs. It is possible to prepare these installable files before activation. During the prepare phase, pre-activation checks are made and the components of the installable files are loaded on to the router setup. The prepare process runs in the background and the router is fully usable during this time. When the prepare phase is over, all the prepared files can be activated instantaneously. The advantages of preparing before activation are:

- If the installable file is corrupted, the prepare process fails. This provides an early warning of the problem. If the corrupted file was activated directly, it might cause router malfunction.
- Directly activating an ISO image for system upgrade takes considerable time during which the router is not usable. However, if the image is prepared before activation, not only does the prepare process run asynchronously, but when the prepared image is subsequently activated, the activation process too takes very less time. As a result, the router downtime is considerably reduced.

Complete this task to upgrade the system and install packages by making use of the prepare operation.



Note Depending on whether you are installing a System Admin package or a XR package, execute the **install** commands in the System Admin EXEC mode or XR EXEC mode respectively. All **install** commands are applicable in both these modes. System Admin install operations can be done from XR mode.

Before you begin

- If the installable file is corrupted, the prepare process fails. This provides an early warning of the problem. If the corrupted file was activated directly, it might cause router malfunction.
- Directly activating an ISO image for system upgrade takes considerable time during which the router is not usable. However, if the image is prepared before activation, not only does the prepare process run asynchronously, but when the prepared image is subsequently activated, the activation process too takes very less time. As a result, the router downtime is considerably reduced.

SUMMARY STEPS

1. Add the required ISO image and packages to the repository.
2. **show install repository**
3. Execute one of these:

- **install prepare** *package_name*
- **install prepare id** *operation_id*

4. **show install prepare**
5. **install activate**
6. **show install active**
7. **install commit**

DETAILED STEPS

Step 1 Add the required ISO image and packages to the repository.
For details, see [Install Packages, on page 3](#).

Step 2 **show install repository**

Example:

```
RP/0/RP0/CPU0:router#show install repository
```

Perform this step to verify that the required installable files are available in the repository. Packages are displayed only after the "install add" operation is complete.

Step 3 Execute one of these:

- **install prepare** *package_name*
- **install prepare id** *operation_id*

Example:

```
RP/0/RP0/CPU0:router#install prepare ncs5500-mp1s-1.0.0.0-r60023I.x86_64.rpm
```

or

```
RP/0/RP0/CPU0:router#install prepare id 8
```

The prepare process takes place. This operation is performed in asynchronous mode. The **install prepare** command runs in the background, and the EXEC prompt is returned as soon as possible.

If you use the operation ID, all packages that were added in the specified operation are prepared together. For example, if 5 packages are added in operation 8, by executing **install prepare id 8**, all 5 packages are prepared together. You do not have to prepare the packages individually.

Step 4 **show install prepare**

Example:

```
RP/0/RP0/CPU0:router#show install prepare
```

Displays packages that are prepared. From the result, verify that all the required packages have been prepared.

Step 5 **install activate**

Example:

```
RP/0/RP0/CPU0:router#install activate
```

All the packages that have been prepared are activated together to make the package configurations active on the router.

Note You should not specify any package name or operation ID in the CLI.

Activation of some SMUs require manual reload of the router. When such SMUs are activated, a warning message is displayed to perform reload. The components of the SMU get activated only after the reload is complete. Perform router reload immediately after the execution of the **install activate** command is completed.

Step 6 show install active

Example:

```
RP/0/RP0/CPU0:router#show install active
```

Displays packages that are active.

```
Node 0/RP0/CPU0 [RP]
Boot Partition: xr_lv70
Active Packages: 24
ncs5500-xr-6.0.0.23I version=6.0.0.23I [Boot image]
ncs5500-k9sec-1.0.0.0-r60023I
ncs5500-m2m-2.0.0.0-r60023I
ncs5500-mgbl-2.0.0.0-r60023I
ncs5500-mp1s-1.0.0.0-r60023I
ncs5500-mp1s-te-rsvp-1.0.0.0-r60023I
ncs5500-infra-2.0.0.2-r60023I.CSCxr22222
ncs5500-iosxr-fwding-2.0.0.2-r60023I.CSCxr22222
ncs5500-iosxr-fwding-2.0.0.5-r60023I.CSCxr90016
ncs5500-iosxr-fwding-2.0.0.1-r60023I.CSCxr55555
ncs5500-iosxr-fwding-2.0.0.6-r60023I.CSCxr90017
ncs5500-dpa-1.0.0.1-r60023I.CSCxr90002
ncs5500-dpa-1.0.0.2-r60023I.CSCxr90004
ncs5500-dpa-fwding-1.0.0.1-r60023I.CSCxr90005
ncs5500-k9sec-1.0.0.1-r60023I.CSCxr80008
ncs5500-os-support-1.0.0.1-r60023I.CSCxr90013
ncs5500-os-support-1.0.0.2-r60023I.CSCxr90014
ncs5500-fwding-1.0.0.2-r60023I.CSCxr90011
ncs5500-fwding-1.0.0.5-r60023I.CSCxr90019
ncs5500-fwding-1.0.0.1-r60023I.CSCxr90010
ncs5500-fwding-1.0.0.4-r60023I.CSCxr90018
ncs5500-mgbl-2.0.0.2-r60023I.CSCxr80009
ncs5500-mp1s-1.0.0.1-r60023I.CSCxr33333
ncs5500-mp1s-te-rsvp-1.0.0.2-r60023I.CSCxr33335
```

From the result, verify that on all RPs and LCs, the same image and package versions are active.

Step 7 install commit

Example:

```
RP/0/RP0/CPU0:router#install commit
```

Installing Packages: Related Commands

Related Commands	Purpose
show install log	Displays the log information for the install process; this can be used for troubleshooting in case of install failure.
show install package	Displays the details of the packages that have been added to the repository. Use this command to identify individual components of a package.

Related Commands	Purpose
install prepare clean	Clears the prepare operation and removes all the packages from the prepared state.

What to do next

- After performing a system upgrade, upgrade FPD by using the **upgrade hw-module location all fpd all** command from the System Admin EXEC mode. The progress of FPD upgrade process can be monitored using the **show hw-module fpd** command in the System Admin EXEC mode. Reload the router after the FPD upgrade is completed.
- Verify the installation using the **install verify packages** command.
- Uninstall the packages or SMUs if their installation causes any issues on the router. See [Uninstall Packages](#).



Note ISO images cannot be uninstalled. However, you can perform a system downgrade by installing an older ISO version.

Uninstall Packages

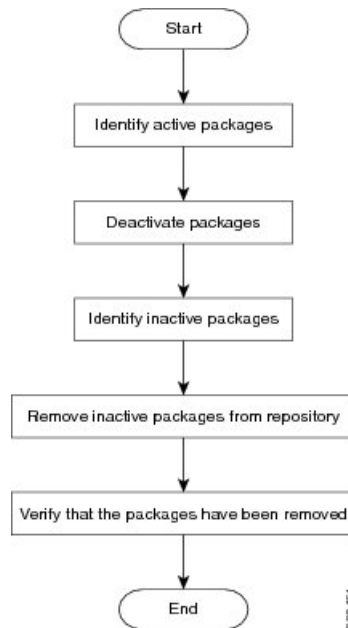
Complete this task to uninstall a package. All router functionalities that are part of the uninstalled package are deactivated. Packages that are added in the XR VM cannot be uninstalled from the System Admin VM, and vice versa.



Note Installed ISO images cannot be uninstalled. Also, kernel SMUs that install third party SMU on host, XR VM and System Admin VM, cannot be uninstalled. However, subsequent installation of ISO image or kernel SMU overwrites the existing installation.

The workflow for uninstalling a package is shown in this flowchart.

Figure 2: Uninstalling Packages Workflow



This task uninstalls XR VM packages. If you need to uninstall System Admin packages, run the same commands from the System Admin EXEC mode.

SUMMARY STEPS

1. **show install active**
2. Execute one of these:
 - **install deactivate** *package_name*
 - **install deactivate id** *operation_id*
3. **show install inactive**
4. **install remove** *package_name*
5. **show install repository**

DETAILED STEPS

Step 1 show install active

Example:

```
RP/0/RP0/CPU0:router#show install active
```

Displays active packages. Only active packages can be deactivated.

```
Node 0/RP0/CPU0 [RP]
Boot Partition: xr_lv70
Active Packages: 24
ncs5500-xr-6.0.0.23I version=6.0.0.23I [Boot image]
ncs5500-k9sec-1.0.0.0-r60023I
ncs5500-m2m-2.0.0.0-r60023I
ncs5500-mgbl-2.0.0.0-r60023I
```

```

ncs5500-mp1s-1.0.0.0-r60023I
ncs5500-mp1s-te-rsvp-1.0.0.0-r60023I
ncs5500-infra-2.0.0.2-r60023I.CSCxr22222
ncs5500-iosxr-fwding-2.0.0.2-r60023I.CSCxr22222
ncs5500-iosxr-fwding-2.0.0.5-r60023I.CSCxr90016
ncs5500-iosxr-fwding-2.0.0.1-r60023I.CSCxr55555
ncs5500-iosxr-fwding-2.0.0.6-r60023I.CSCxr90017
ncs5500-dpa-1.0.0.1-r60023I.CSCxr90002
ncs5500-dpa-1.0.0.2-r60023I.CSCxr90004
ncs5500-dpa-fwding-1.0.0.1-r60023I.CSCxr90005
ncs5500-k9sec-1.0.0.1-r60023I.CSCxr80008
ncs5500-os-support-1.0.0.1-r60023I.CSCxr90013
ncs5500-os-support-1.0.0.2-r60023I.CSCxr90014
ncs5500-fwding-1.0.0.2-r60023I.CSCxr90011
ncs5500-fwding-1.0.0.5-r60023I.CSCxr90019
ncs5500-fwding-1.0.0.1-r60023I.CSCxr90010
ncs5500-fwding-1.0.0.4-r60023I.CSCxr90018
ncs5500-mgbl-2.0.0.2-r60023I.CSCxr80009
ncs5500-mp1s-1.0.0.1-r60023I.CSCxr33333
ncs5500-mp1s-te-rsvp-1.0.0.2-r60023I.CSCxr33333

```

Step 2 Execute one of these:

- **install deactivate** *package_name*
- **install deactivate id** *operation_id*

Example:

```
RP/0/RP0/CPU0:router#install deactivate ncs5500-mp1s-1.0.0.0-r60023I.x86_64.rpm
ncs5500-mgbl-2.0.0.0-r60023I.x86_64.rpm
```

or

```
RP/0/RP0/CPU0:router#install deactivate id 8
```

The *operation_id* is the ID from **install add** operation. All features and software patches associated with the package are deactivated. You can specify multiple package names and deactivate them simultaneously.

If you use the operation ID, all packages that were added in the specified operation are deactivated together. You do not have to deactivate the packages individually. If System admin packages were added as a part of the **install add** operation (of the ID used in deactivate) then those packages will also be deactivated.

Step 3 **show install inactive**

Example:

```
RP/0/RP0/CPU0:router#show install inactive
```

The deactivated packages are now listed as inactive packages. Only inactive packages can be removed from the repository.

Step 4 **install remove** *package_name*

Example:

```
RP/0/RP0/CPU0:router#install remove ncs5500-mp1s-1.0.0.0-r60023I.x86_64.rpm
ncs5500-mgbl-2.0.0.0-r60023I.x86_64.rpm
```

The inactive packages are removed from the repository.

Use the **install remove** command with the **id** *operation-id* keyword and argument to remove all packages that were added for the specified operation ID.

Step 5 **show install repository**

Example:

```
RP/0/RP0/CPU0:router#show install repository
```

Displays packages available in the repository. The package that are removed are no longer displayed in the result.

What to do next

Install required packages. .