



Cisco Nexus 9000 Series NX-OS IP SLAs Configuration Guide, Release 9.2(x)

First Published: 2018-07-18

Last Modified: 2020-08-20

Americas Headquarters

Cisco Systems, Inc.
170 West Tasman Drive
San Jose, CA 95134-1706
USA
<http://www.cisco.com>
Tel: 408 526-4000
800 553-NETS (6387)
Fax: 408 527-0883

THE SPECIFICATIONS AND INFORMATION REGARDING THE PRODUCTS IN THIS MANUAL ARE SUBJECT TO CHANGE WITHOUT NOTICE. ALL STATEMENTS, INFORMATION, AND RECOMMENDATIONS IN THIS MANUAL ARE BELIEVED TO BE ACCURATE BUT ARE PRESENTED WITHOUT WARRANTY OF ANY KIND, EXPRESS OR IMPLIED. USERS MUST TAKE FULL RESPONSIBILITY FOR THEIR APPLICATION OF ANY PRODUCTS.

THE SOFTWARE LICENSE AND LIMITED WARRANTY FOR THE ACCOMPANYING PRODUCT ARE SET FORTH IN THE INFORMATION PACKET THAT SHIPPED WITH THE PRODUCT AND ARE INCORPORATED HEREIN BY THIS REFERENCE. IF YOU ARE UNABLE TO LOCATE THE SOFTWARE LICENSE OR LIMITED WARRANTY, CONTACT YOUR CISCO REPRESENTATIVE FOR A COPY.

The Cisco implementation of TCP header compression is an adaptation of a program developed by the University of California, Berkeley (UCB) as part of UCB's public domain version of the UNIX operating system. All rights reserved. Copyright © 1981, Regents of the University of California.

NOTWITHSTANDING ANY OTHER WARRANTY HEREIN, ALL DOCUMENT FILES AND SOFTWARE OF THESE SUPPLIERS ARE PROVIDED "AS IS" WITH ALL FAULTS. CISCO AND THE ABOVE-NAMED SUPPLIERS DISCLAIM ALL WARRANTIES, EXPRESSED OR IMPLIED, INCLUDING, WITHOUT LIMITATION, THOSE OF MERCHANTABILITY, FITNESS FOR A PARTICULAR PURPOSE AND NON-INFRINGEMENT OR ARISING FROM A COURSE OF DEALING, USAGE, OR TRADE PRACTICE.

IN NO EVENT SHALL CISCO OR ITS SUPPLIERS BE LIABLE FOR ANY INDIRECT, SPECIAL, CONSEQUENTIAL, OR INCIDENTAL DAMAGES, INCLUDING, WITHOUT LIMITATION, LOST PROFITS OR LOSS OR DAMAGE TO DATA ARISING OUT OF THE USE OR INABILITY TO USE THIS MANUAL, EVEN IF CISCO OR ITS SUPPLIERS HAVE BEEN ADVISED OF THE POSSIBILITY OF SUCH DAMAGES.

Any Internet Protocol (IP) addresses and phone numbers used in this document are not intended to be actual addresses and phone numbers. Any examples, command display output, network topology diagrams, and other figures included in the document are shown for illustrative purposes only. Any use of actual IP addresses or phone numbers in illustrative content is unintentional and coincidental.

All printed copies and duplicate soft copies of this document are considered uncontrolled. See the current online version for the latest version.

Cisco has more than 200 offices worldwide. Addresses and phone numbers are listed on the Cisco website at www.cisco.com/go/offices.

The documentation set for this product strives to use bias-free language. For purposes of this documentation set, bias-free is defined as language that does not imply discrimination based on age, disability, gender, racial identity, ethnic identity, sexual orientation, socioeconomic status, and intersectionality. Exceptions may be present in the documentation due to language that is hardcoded in the user interfaces of the product software, language used based on standards documentation, or language that is used by a referenced third-party product.

Cisco and the Cisco logo are trademarks or registered trademarks of Cisco and/or its affiliates in the U.S. and other countries. To view a list of Cisco trademarks, go to this URL: <https://www.cisco.com/c/en/us/about/legal/trademarks.html>. Third-party trademarks mentioned are the property of their respective owners. The use of the word partner does not imply a partnership relationship between Cisco and any other company. (1721R)

© 2018–2020 Cisco Systems, Inc. All rights reserved.



CONTENTS

PREFACE

Preface	ix
Audience	ix
Document Conventions	ix
Related Documentation for Cisco Nexus 9000 Series Switches	x
Documentation Feedback	x
Communications, Services, and Additional Information	x

CHAPTER 1

New and Changed Information	1
New and Changed Information	1

CHAPTER 2

Information About Cisco NX-OS IP SLAs	3
Network Performance Measurement Using Cisco NX-OS IP SLAs	5
Cisco NX-OS IP SLAs Operation Types	5
Cisco NX-OS IP SLAs Responder and IP SLAs Control Protocol	6
Cisco NX-OS IP SLAs Operation Scheduling	6
Cisco NX-OS IP SLAs Operation Threshold Monitoring	6
MPLS VPN Awareness	7
History Statistics	7
Guidelines and Limitations for IP SLAs	7
Restrictions for Implementing IP SLAs	8

CHAPTER 3

Configuring IP SLAs UDP Jitter Operations	9
Information About the IP SLAs UDP Jitter Operation	9
Prerequisites for Configuring IP SLAs UDP Jitter Operations	10
Guidelines and Limitations for UDP Jitter Operations	10
Configuring CoPP for IP SLA Packets	11

Matching the Netstack Port Range	12
Configuring and Scheduling a UDP Jitter Operation on the Source Device	12
Configuring the IP SLAs Responder on the Destination Device	12
Configuring and Scheduling a Basic UDP Jitter Operation on the Source Device	14
Configuring and Scheduling a UDP Jitter Operation with Additional Characteristics	15
Configuration Example for a UDP Jitter Operation	19

CHAPTER 4

Configuring IP SLAs UDP Jitter Operations for VoIP	21
Guidelines and Limitations for IP SLAs UDP Jitter Operations for VoIP	21
Calculated Planning Impairment Factor	22
Mean Opinion Scores	23
Voice Performance Monitoring Using IP SLAs	24
Codec Simulation Within IP SLAs	24
IP SLAs ICPIF Value	25
IP SLAs MOS Value	26
Configuring and Scheduling an IP SLAs VoIP UDP Jitter Operation	28
Configuration Examples for IP SLAs VoIP UDP Operation	31
Configuration Examples for IP SLAs VoIP UDP Operation Statistics Output	33

CHAPTER 5

Configuring IP SLAs UDP Echo Operations	35
UDP Echo Operation	35
Guidelines and Limitations for UDP Echo Operations	36
Configuring CoPP for IP SLA Packets	36
Matching the Netstack Port Range	37
Configuring the IP SLAs Responder on the Destination Device	38
Configuring a Basic UDP Echo Operation on the Source Device	39
Configuring a UDP Echo Operation with Optional Parameters on the Source Device	40
Scheduling IP SLAs Operations	44
Configuration Example for a UDP Echo Operation	46

CHAPTER 6

Configuring IP SLAs TCP Connect Operations	47
Information About the TCP Connect Operation	47
Guidelines and Limitations for Configuring IP SLAs TCP Connect Operations	48
Configuring CoPP for IP SLA Packets	48

Matching the Netstack Port Range	49
Configuring the IP SLAs Responder on the Destination Device	50
Configuring and Scheduling a TCP Connect Operation on the Source Device	51
Configuring and Scheduling a Basic TCP Connect Operation on the Source Device	52
Configuring and Scheduling a TCP Connect Operation with Optional Parameters on the Source Device	54
Configuration Example for a TCP Connect Operation	59

CHAPTER 7**Configuring an IP SLAs HTTP Operations 61**

Configuring an IP SLAs HTTP Operation	61
About IP SLAs HTTP Operations	61
Restrictions for IP SLAs HTTP Operations	62
Configuring a Basic HTTP GET Operation	62
Configuring a HTTP GET Operation with Optional Parameters	63
Scheduling IP SLAs Operations	65
Troubleshooting Tips	67

CHAPTER 8**Configuring a Multioperations Scheduler 69**

Information About the IP SLAs Multioperations Scheduler	69
Default Behavior of IP SLAs Multiple Operations Scheduling	70
Multiple Operations Scheduling with Scheduling Period Less Than Frequency	71
Multiple Operations Scheduling When the Number of IP SLAs Operations are Greater than the Schedule Period	73
Multiple Operations Scheduling with Scheduling Period Greater Than Frequency	74
IP SLAs Random Scheduler	75
Prerequisites for an IP SLAs Multioperation Scheduler	76
Scheduling Multiple IP SLAs Operations	77
Enabling the IP SLAs Random Scheduler	78
Verifying IP SLAs Multiple Operations Scheduling	79
Configuration Example for Scheduling Multiple IP SLAs Operations	81
Configuration Example for Enabling the IP SLAs Random Scheduler	81

CHAPTER 9**Configuring Proactive Threshold Monitoring for IP SLAs Operations 83**

Information About IP SLAs Reaction Configuration	83
--	----

IP SLAs Threshold Monitoring and Notifications	83
RTT Reactions for Jitter Operations	85
Configuring Proactive Threshold Monitoring	85
Configuration Example for an IP SLAs Reaction Configuration	87
Verification Example for an IP SLAs Reaction Configuration	88
Configuration Example for Triggering SNMP Notifications	88

CHAPTER 10 **Configuring IP SLA PBR Object Tracking** 91

IP SLA PBR Object Tracking	91
Object Tracking	91
IP SLA PBR Object Tracking Overview	91
Configuring IP SLA PBR Object Tracking	92
Example: Configuring IP SLA PBR Object Tracking	95

CHAPTER 11 **Configuring IP SLAs DNS Operations** 97

IP SLAs DNS Operations	97
Guidelines and Limitations for IP SLA DNS Operations	97
DNS Operation	97
Configuring a Basic DNS Operation on the Source Device	98
Configuring a DNS Operation with Optional Parameters on the Source Device	99
Scheduling IP SLAs Operations	102
Configuration Example for a DNS Operation	103
Configuration Example for a Basic DNS Operation on the Source Device	103
Configuration Example for a DNS Operation with Optional Parameters on the Source Device	104
Configuration Example for Scheduling IP SLAs Operations	104

CHAPTER 12 **Configuring IP SLAs ICMP Echo Operations** 105

ICMP Echo Operation	105
Guidelines and Limitations for IP SLAs ICMP Echo Operations	106
Configuring an ICMP Echo Operation	106
Configuring a Basic ICMP Echo Operation on a Source Device	106
Configuring an ICMP Echo Operation with Optional Parameters	107
Scheduling IP SLAs Operations	110
Troubleshooting Tips	113

What to Do Next	113
Configuration Examples for IP SLAs ICMP Echo Operations	113
Example: Configuring a Basic ICMP Echo Operation on a Source Device	113
Example: Configuring an ICMP Echo Operation with Optional Parameters	113
Example: Scheduling IP SLAs Operations	114

CHAPTER 13
IP SLAs TWAMP Responder 115

Prerequisites for IP SLAs TWAMP Responder	115
Restrictions for IP SLAs TWAMP Responder	115
Information About IP SLAs TWAMP Responder	115
TWAMP	115
IP SLAs TWAMP Responder v1.0	116
How to Configure an IP SLAs TWAMP Responder	117
Configuring the TWAMP Server	117
Configuring the Session-Reflector	118
Configuration Examples for IP SLAs TWAMP Responder	119
IP SLAs TWAMP Responder v1.0 Example	119
Verifying the IP SLA TWAMP Responder Configuration	120
Additional References	121

Glossary ?



Preface

This preface includes the following sections:

- [Audience, on page ix](#)
- [Document Conventions, on page ix](#)
- [Related Documentation for Cisco Nexus 9000 Series Switches, on page x](#)
- [Documentation Feedback, on page x](#)
- [Communications, Services, and Additional Information, on page x](#)

Audience

This publication is for network administrators who install, configure, and maintain Cisco Nexus switches.

Document Conventions

Command descriptions use the following conventions:

Convention	Description
bold	Bold text indicates the commands and keywords that you enter literally as shown.
<i>Italic</i>	Italic text indicates arguments for which you supply the values.
[x]	Square brackets enclose an optional element (keyword or argument).
[x y]	Square brackets enclosing keywords or arguments that are separated by a vertical bar indicate an optional choice.
{x y}	Braces enclosing keywords or arguments that are separated by a vertical bar indicate a required choice.
[x {y z}]	Nested set of square brackets or braces indicate optional or required choices within optional or required elements. Braces and a vertical bar within square brackets indicate a required choice within an optional element.

Convention	Description
<i>variable</i>	Indicates a variable for which you supply values, in context where italics cannot be used.
string	A nonquoted set of characters. Do not use quotation marks around the string or the string includes the quotation marks.

Examples use the following conventions:

Convention	Description
<code>screen font</code>	Terminal sessions and information the switch displays are in screen font.
boldface screen font	Information that you must enter is in boldface screen font.
<i>italic screen font</i>	Arguments for which you supply values are in italic screen font.
<>	Nonprinting characters, such as passwords, are in angle brackets.
[]	Default responses to system prompts are in square brackets.
!, #	An exclamation point (!) or a pound sign (#) at the beginning of a line of code indicates a comment line.

Related Documentation for Cisco Nexus 9000 Series Switches

The entire Cisco Nexus 9000 Series switch documentation set is available at the following URL:

http://www.cisco.com/en/US/products/ps13386/tsd_products_support_series_home.html

Documentation Feedback

To provide technical feedback on this document, or to report an error or omission, please send your comments to nexus9k-docfeedback@cisco.com. We appreciate your feedback.

Communications, Services, and Additional Information

- To receive timely, relevant information from Cisco, sign up at [Cisco Profile Manager](#).
- To get the business impact you're looking for with the technologies that matter, visit [Cisco Services](#).
- To submit a service request, visit [Cisco Support](#).
- To discover and browse secure, validated enterprise-class apps, products, solutions and services, visit [Cisco Marketplace](#).
- To obtain general networking, training, and certification titles, visit [Cisco Press](#).
- To find warranty information for a specific product or product family, access [Cisco Warranty Finder](#).

Cisco Bug Search Tool

[Cisco Bug Search Tool](#) (BST) is a web-based tool that acts as a gateway to the Cisco bug tracking system that maintains a comprehensive list of defects and vulnerabilities in Cisco products and software. BST provides you with detailed defect information about your products and software.



CHAPTER 1

New and Changed Information

This chapter provides release-specific information for each new and changed feature in the *Cisco Nexus 9000 Series NX-OS IP SLAs Configuration Guide, Release 9.2(x)*.

- [New and Changed Information, on page 1](#)

New and Changed Information

This table summarizes the new and changed features for the *Cisco Nexus 9000 Series NX-OS IP SLAs Configuration Guide, 9.2(x)* and where they are documented.

Table 1: New and Changed Features

Feature	Description	Changed in Release	Where Documented
	Changed the document title from 9.x to 9.2(x)		Title page
IP SLAs TWAMP Responder	Added support for a TWAMP responder on a Cisco device to measure IP performance between the Cisco device and a non-Cisco TWAMP control device on your network.	9.2(1)	IP SLAs TWAMP Responder, on page 115



CHAPTER 2

Information About Cisco NX-OS IP SLAs

Many companies conduct most of their business online and any loss of service can affect the profitability of the company. Internet service providers (ISPs) and even internal IT departments now offer a defined level of service—a service level agreement—to provide their customers with a degree of predictability.

The latest performance requirements for business-critical applications, voice over IP (VoIP) networks, audio and visual conferencing, Multiprotocol Label Switching (MPLS), and Virtual Private Networks (VPNs) are creating internal pressures on converged IP networks to become optimized for performance levels. Network administrators are increasingly required to support service level agreements that support application solutions. IP Service Level Agreements (SLAs) allow you to manage IP service levels for IP applications and services.

The Cisco NX-OS IP SLAs use active traffic monitoring—the generation of traffic in a continuous, reliable, and predictable manner—for measuring network performance. Cisco NX-OS IP SLAs send data across the network to measure performance between multiple network locations or across multiple network paths. It simulates network data and IP services and collects network performance information in real time. The information collected includes data about the response time, one-way latency, jitter (interpacket delay variance), packet loss, voice quality scoring, network resource availability, application performance, and server response time. Cisco NX-OS IP SLAs performs active monitoring by generating and analyzing traffic to measure performance either between Cisco NX-OS devices or from a Cisco NX-OS device to a remote IP device such as a network application server. Measurement statistics provided by the various Cisco NX-OS IP SLAs operations can be used for troubleshooting, problem analysis, and designing network topologies.



Note IPSLA do not support rollback. The rollback is related to IPSLA configuration via CLI.

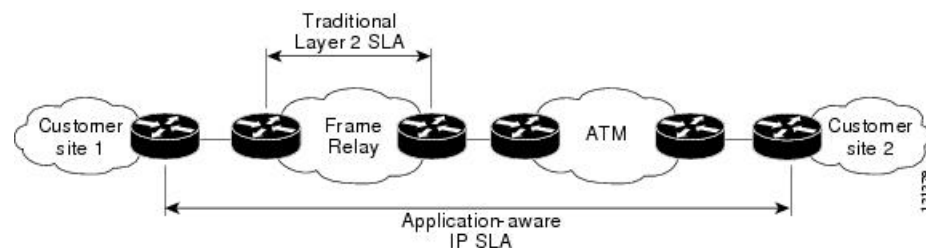
Cisco NX-OS IP SLAs provides the following improvements over a traditional service level agreement:

- End-to-end measurements—The ability to measure performance from one end of the network to the other allows a broader reach and more accurate representation of the end-user experience.
- Sophistication—Statistics such as delay, jitter, packet sequence, Layer 3 connectivity, and path and download time that are broken down into bidirectional and round-trip numbers provide more data than just the bandwidth of a Layer 2 link.
- Ease of deployment—Leveraging the existing Cisco devices in a large network makes Cisco NX-OS IP SLAs easier and cheaper to implement than the physical probes often required with traditional service level agreements.

- **Application-aware monitoring**--Cisco NX-OS IP SLAs can simulate and measure performance statistics generated by applications running over Layer 3 through Layer 7. Traditional service level agreements can only measure Layer 2 performance.
- **Pervasiveness**--Cisco NX-OS IP SLAs support exists in Cisco networking devices that range from low-end to high-end switches. This wide range of deployment gives Cisco NX-OS IP SLAs more flexibility over traditional service level agreements.

The following figure shows how Cisco NX-OS IP SLAs have taken the traditional concept of Layer 2 service level agreements and applied a broader scope to support end-to-end performance measurement, including support of applications.

Figure 1: Scope of Traditional Service Level Agreement Versus Cisco NX-OS IP SLAs



Using Cisco NX-OS IP SLAs, you can measure, provide, and verify service level agreements. You can also analyze and troubleshoot network performance for IP services and applications. Depending on the specific Cisco NX-OS IP SLAs operation, statistics of delay, packet loss, jitter, packet sequence, connectivity, path, server response time, and download time can be monitored within the Cisco device and stored in both CLI and SNMP MIBs. The packets have configurable IP and application layer options such as a source and destination IP address, User Datagram Protocol (UDP)/TCP port numbers, a type of service (ToS) byte (including Differentiated Services Code Point [DSCP] and IP prefix bits), a Virtual Private Network (VPN) routing/forwarding instance (VRF), and a URL web address.

Because Cisco NX-OS IP SLAs are accessible using SNMP, it also can be used by performance monitoring applications such as CiscoWorks Internetwork Performance Monitor (IPM) and other third-party, Cisco partner performance management products.

SNMP notifications based on the data gathered by a Cisco NX-OS IP SLAs operation allow the switch to receive alerts when performance drops below a specified level and when problems are corrected. Cisco NX-OS IP SLAs use the Cisco RTTMON MIB for interaction between external Network Management System (NMS) applications and the Cisco NX-OS IP SLAs operations running on the Cisco devices. For a complete description of the object variables referenced by the Cisco NX-OS IP SLAs feature, see the text of the CISCO-RTTMON-MIB.my file, available from the Cisco MIB website.

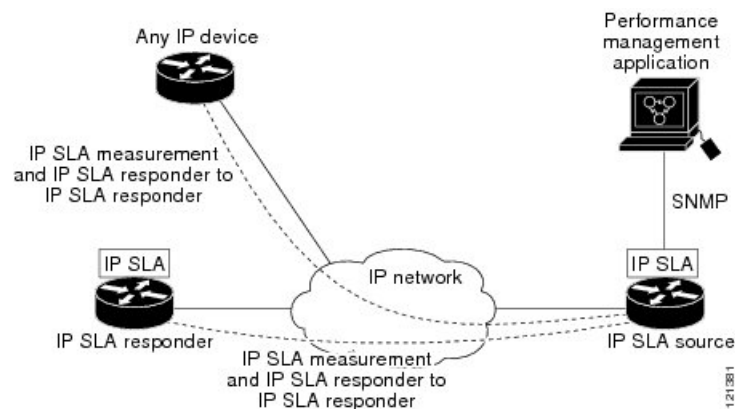
- [Network Performance Measurement Using Cisco NX-OS IP SLAs, on page 5](#)
- [Cisco NX-OS IP SLAs Operation Types, on page 5](#)
- [Cisco NX-OS IP SLAs Responder and IP SLAs Control Protocol, on page 6](#)
- [Cisco NX-OS IP SLAs Operation Scheduling, on page 6](#)
- [Cisco NX-OS IP SLAs Operation Threshold Monitoring, on page 6](#)
- [MPLS VPN Awareness, on page 7](#)
- [History Statistics, on page 7](#)
- [Guidelines and Limitations for IP SLAs, on page 7](#)
- [Restrictions for Implementing IP SLAs, on page 8](#)

Network Performance Measurement Using Cisco NX-OS IP SLAs

Using Cisco NX-OS IP SLAs, you can monitor the performance between any area in the network: core, distribution, and edge. Monitoring can be done anytime, anywhere, without deploying a physical probe.

Cisco NX-OS IP SLAs use generated traffic to measure network performance between two networking devices such as switches. The following figure shows how Cisco NX-OS IP SLAs start when the Cisco NX-OS IP SLAs device sends a generated packet to the destination device. After the destination device receives the packet, and depending on the type of Cisco NX-OS IP SLAs operation, the device responds with time-stamp information for the source to make the calculation on performance metrics. A Cisco NX-OS IP SLAs operation performs a network measurement from the source device to a destination in the network using a specific protocol such as UDP.

Figure 2: Cisco NX-OS IP SLAs Operations



To implement a Cisco NX-OS IP SLAs network performance measurement, you must perform these tasks:

1. Enable the Cisco NX-OS IP SLAs Responder, if appropriate.
2. Configure the required Cisco NX-OS IP SLAs operation type.
3. Configure any options available for the specified Cisco NX-OS IP SLAs operation type.
4. Configure threshold conditions, if required.
5. Schedule the operation to run and then let the operation run for a period of time to gather statistics.
6. Display and interpret the results of the operation using Cisco NX-OS CLI or a network management system with SNMP.

Cisco NX-OS IP SLAs Operation Types

The various types of Cisco NX-OS IP SLAs operations include the following:

- UDP jitter
- UDP jitter for VoIP
- UDP echo

- Transmission Control Protocol (TCP) connect
- Multioperation Scheduler
- Proactive Threshold Monitoring

Cisco NX-OS IP SLAs Responder and IP SLAs Control Protocol

The responder is a component that is embedded in the destination Cisco routing device that allows the system to anticipate and respond to Cisco NX-OS IP SLAs request packets. The IP SLAs Responder provides accurate measurements without the need for dedicated probes and additional statistics that are not available via standard ICMP-based measurements. The Cisco NX-OS IP SLAs Control Protocol is used by the IP SLAs Responder to provide a mechanism through which the responder can be notified on which port it should listen and respond. Only a Cisco NX-OS device can be a source for a destination responder.

The IP SLAs Responder listens on a specific port for control protocol messages sent by a Cisco NX-OS IP SLAs operation. Upon receipt of the control message, the responder enables the specified UDP or TCP port for the specified duration. During this time, the responder accepts the requests and responds to them. The responder disables the port after it responds to the Cisco NX-OS IP SLAs packet or when the specified time expires.

Enabling the IP SLAs Responder on the destination device is not required for all IP SLAs operations. For example, if services that are already provided by the destination switch (such as Telnet or HTTP) are chosen, the IP SLAs Responder does not need to be enabled. For non-Cisco devices, the IP SLAs Responder cannot be configured and Cisco NX-OS IP SLAs can send operational packets only to services native to those devices.

Cisco NX-OS IP SLAs Operation Scheduling

After a Cisco NX-OS IP SLAs operation has been configured, you must schedule the operation to begin capturing statistics and collecting error information. When scheduling, an operation can start immediately or start at a certain month, day, and hour. There is a pending option to set the operation to start at a later time. The pending option is also an internal state of the operation visible through SNMP. The pending state is also used when an operation is a reaction (threshold) operation waiting to be triggered. You can schedule a single Cisco NX-OS IP SLAs operation or a group of operations at one time.

Multioperations scheduling allows you to schedule multiple Cisco NX-OS IP SLAs operations using a single command through the Cisco NX-OS CLI or the CISCO RTTMON-MIB. This feature allows you to control the amount of IP SLAs monitoring traffic by scheduling the operations to run at evenly distributed times. This distribution of IP SLAs operations allows you to minimize the CPU utilization and enhance the scalability of the network.

For more details about the IP SLAs multioperations scheduling functionality, see the IP SLAs Multioperation Scheduler section.

Cisco NX-OS IP SLAs Operation Threshold Monitoring

To support successful service level agreement monitoring or to proactively measure network performance, threshold functionality is essential. Consistent reliable measurements immediately identify issues and can save troubleshooting time. To roll out a service level agreement, you must have mechanisms that notify you

immediately of any possible violations. Cisco NX-OS IP SLAs can send SNMP traps that are triggered by events such as the following:

- Connection loss
- Timeout
- Round-trip time threshold
- Average jitter threshold
- One-way packet loss
- One-way jitter
- One-way mean opinion score (MOS)
- One-way latency

Alternately, a Cisco NX-OS IP SLAs threshold violation can trigger another Cisco NX-OS IP SLAs operation for further analysis.

For more details on using thresholds with Cisco NX-OS IP SLAs operations, see the Proactive Threshold Monitoring for IP SLAs Operations section.

MPLS VPN Awareness

The Cisco NX-OS IP SLAs MPLS VPN Awareness feature allows you to monitor IP service levels within Multiprotocol Label Switching (MPLS) Virtual Private Networks (VPNs). Using IP SLAs within MPLS VPNs allows service providers to plan, provision, and manage IP VPN services according to the service level agreement for a customer. IP SLAs operations can be configured for a specific VPN by specifying a VPN routing and forwarding (VRF) name.

History Statistics

Cisco NX-OS IP SLAs maintain the following three types of history statistics:

- Aggregated statistics--By default, IP SLAs maintain two hours of aggregated statistics for each operation. The value from each operation cycle is aggregated with the previously available data within a given hour. The Enhanced History feature in IP SLAs allows for the aggregation interval to be shorter than an hour.
- Operation snapshot history--IP SLAs maintain a snapshot of data for each operation instance that matches a configurable filter, such as all, over threshold, or failures. The entire set of data is available and no aggregation takes place.
- Distribution statistics--IP SLAs maintain a frequency distribution over configurable intervals. Each time IP SLAs starts an operation, a new history bucket is created until the number of history buckets that matches the specified size or the lifetime of the operation expires. By default, the history for an IP SLAs operation is not collected. If history is collected, each bucket contains one or more history entries from the operation. History buckets do not wrap.

Guidelines and Limitations for IP SLAs

IP SLAs have the following guidelines and limitations:

- **show** commands with the **internal** keyword are not supported.
- IP SLAs do not support the Cisco NX-OS rollback feature.

- IPv6 for ICMP echo operation is supported for Cisco Nexus 9300 and 9500 Series switches.
- The Cisco Nexus 3232C and 3264Q switches do not support policy-based routing (PBR).
- One-way delay (latency) measurements do not support the microsecond unit of measurement. Other units of measurement, such as the millisecond, are supported.
- In situations involving many simultaneous interface state changes, such as a switch reboot, an IP SLA track might take several minutes to come up. In this situation, check for a high number of glean drops. Run the **sh policy-map interface control-plane** command and look for continuous drops or violations in steady state of the switch under `match exception glean`. As a workaround, you can increase the **hardware ip glean throttle maximum** to 10,000 from its default of 1000.

Restrictions for Implementing IP SLAs

The restrictions for Cisco NX-OS IP SLAs include the following:



Note IPv6 is available from Cisco NX-OS Release 7.0(3)I6(1).

- The maximum number of IP SLA configurable operations supported by Cisco NX-OS is 500.
- The current validated scale numbers for scheduling operations are as follows:
 - The number of UDP echo operations is 300 operations with default frequency
 - The number of UDP jitter operations is 200 operations with default frequency
 - The number of ICMP IPv4 or IPv6 echo operations is 500 operations with default frequency
 - The number of TCP connect operations is 100 operations with default frequency

We do not recommend scheduling more than 10 operations per second at the same start time, as this may affect the performance. We recommend using the group scheduling configuration.



Note Setting the frequency to less than 60 seconds will increase the number of packets that will be sent. But this could negatively impact the performance of IP SLA operation when the scheduled operations have the same start time. IP SLA is not HA capable. Consider the following guidelines before configuring the frequency, timeout, and threshold commands:

For the UDP and ICMP jitter operation, the following guidelines are recommended:

- $\text{frequency} > \text{timeout} + 2 \text{ seconds} + \text{num_packets} * \text{packet_interval}$
- $\text{timeout} > \text{rtt_threshold}$
- $\text{num_packet} > \text{loss_threshold}$

For all other IP SLAs operations:

- $\text{frequency} > \text{timeout} > \text{rtt_threshold}$ guideline is recommended.
-



CHAPTER 3

Configuring IP SLAs UDP Jitter Operations

This chapter describes how to configure an IP Service Level Agreements (SLAs) UDP jitter operation to analyze round-trip delay, one-way delay, one-way jitter, one-way packet loss, and connectivity in networks that carry UDP traffic in IPv4 networks. This chapter also demonstrates how the data gathered using the UDP jitter operation can be displayed and analyzed using the Cisco software commands.

This chapter includes the following sections:

- [Information About the IP SLAs UDP Jitter Operation, on page 9](#)
- [Prerequisites for Configuring IP SLAs UDP Jitter Operations, on page 10](#)
- [Guidelines and Limitations for UDP Jitter Operations, on page 10](#)
- [Configuring and Scheduling a UDP Jitter Operation on the Source Device, on page 12](#)
- [Configuration Example for a UDP Jitter Operation, on page 19](#)

Information About the IP SLAs UDP Jitter Operation

The IP SLAs UDP jitter operation can diagnose network suitability for real-time traffic applications such as voice over IP (VoIP), video over IP, or real-time conferencing.

Jitter means inter-packet delay variance. When multiple packets are sent consecutively from source to destination, for example, 10 ms apart, and if the network is behaving ideally, the destination should be receiving them 10 ms apart. But if there are delays in the network (such as queuing, arriving through alternate routes, and so on), the arrival delay between packets might be greater than or less than 10 ms. Using this example, a positive jitter value indicates that the packets arrived greater than 10 ms apart. If the packets arrive 12 ms apart, then positive jitter is 2 ms; if the packets arrive 8 ms apart, then negative jitter is 2 ms. For delay-sensitive networks such as VoIP, positive jitter values are undesirable, and a jitter value of 0 is ideal.

However, the IP SLAs UDP jitter operation does more than just monitor jitter. As the UDP jitter operation includes the data returned by the IP SLAs UDP operation, the UDP jitter operation can be used as a multipurpose data gathering operation. The packets that IP SLAs generate carry packet sending sequence, receiving sequence information, and sending and receiving time stamps from the source and the operational target. UDP jitter operations can measure the following:

- Per-direction jitter (source to destination and destination to source)
- Per-direction packet-loss
- Per-direction delay (one-way delay)
- Round-trip delay (average round-trip time)

As the paths for the sending and receiving of data may be different (asymmetric), the per-direction data allow you to more readily identify where congestion or other problems are occurring in the network.

The UDP jitter operation functions by generating synthetic (simulated) UDP traffic. The UDP jitter operation sends N UDP packets, each of size S, sent T milliseconds apart, from a source switch to a target switch, at a given frequency of F. By default, ten packet-frames (N), each with a payload size of 10 bytes (S), are generated every 10 ms (T), and the operation is repeated every 60 seconds (F). Each of these parameters are user-configurable as shown in the following table.

Table 2: UDP Jitter Operation Parameters

UDP Jitter Operation Parameter	Default	Command
Number of packets (N)	10 packets	udp-jitter command, numpackets option
Payload size per packet (S)	32 bytes	request-data-size command
Time between packets, in milliseconds (T)	20 ms	udp-jitter command, interval option
Elapsed time before the operation repeats, in seconds (F)	60 seconds	frequency (IP SLA) command

Prerequisites for Configuring IP SLAs UDP Jitter Operations

The prerequisites for configuring IP SLAs UDP jitter operations are as follows:

- Time synchronization, such as that provided by NTP, is required between the source and the target device in order to provide accurate one-way delay (latency) measurements. Time synchronization is not required for the one-way jitter and packet loss measurements. If the time is not synchronized between the source and target devices, one-way jitter and packet loss data are returned, but values of “0” are returned for the one-way delay measurements provided by the UDP jitter operation.
- Before configuring any IP SLAs application, you can use the **show ip sla application** command to verify that the operation type is supported on your software image.

Guidelines and Limitations for UDP Jitter Operations

- **show** commands with the **internal** keyword are not supported.
- One-way delay (latency) measurements do not support the microsecond unit of measurement. Other units of measurement, such as the millisecond, are supported.

Configuring CoPP for IP SLA Packets

When using IP SLA operations on a large scale, a specific CoPP configuration to allow the IP SLA packets to pass through might be needed. Because IP SLA uses user-defined UDP ports, there is no way to allow all IP SLA packets to the control plane. However, you can specify each destination/source port that IP SLA can use.

For more information about the verified scalability of the number of IP SLA probes, see the *Cisco Nexus 9000 Series NX-OS Verified Scalability Guide*.

The following CoPP configuration example allows IP SLA packets to pass through. It assumes destination ports and source ports in the range of 6500-7000. In this example, if “insert-before” is not specified, “copp-ipsla” will be added after “class-default.”



Note The following configuration example might vary based on platform/hardware type. Please refer to the Cisco Nexus 9000 Series NX-OS Security Configuration Guide for details about configuring IP ACL and CoPP.

```
ip access-list acl-sla-allow
 10 remark ### ALLOW SLA control packets from 1.1.1.0/24
 20 permit udp 1.1.1.0/24 any eq 1967
 30 remark ### ALLOW SLA data packets from 1.1.1.0/24 using ports 6500-7000
 40 permit udp 1.1.1.0/24 any range 6500 7000

class-map type control-plane match-any copp-ipsla
 match access-group name acl-sla-allow

policy-map type control-plane Custom-copp-policy-strict
 class copp-ipsla insert-before Custom-copp-class-l2-default
 police cir 1500 kbps

control-plane
 service-policy input Custom-copp-policy-strict

switch# show policy-map interface control-plane | be copp-ipsla
class-map copp-ipsla (match-any)
 match access-group name acl-sla-allow
 set cos 7
 police cir 1500 kbps , bc 32000 bytes
 module 1 :
   transmitted 0 bytes;
   dropped 0 bytes;

class-map Custom-copp-class-l2-default (match-any)
 match access-group name Custom-copp-acl-mac-undesirable
 set cos 0
 police cir 400 kbps , bc 32000 bytes
 module 1 :
   transmitted 0 bytes;
   dropped 0 bytes;

class-map class-default (match-any)
 set cos 0
 police cir 400 kbps , bc 32000 bytes
 module 1 :
   transmitted 122 bytes;
   dropped 0 bytes;
```

Matching the Netstack Port Range

IP SLA only accepts ports within the local netstack port range. The source and destination ports used in the probe's configuration must match the supported netstack ports on the SLA sender and the SLA responder.

When performing ISSU from earlier versions to version 9.3(1) and later versions, ensure that the features with user-defined ports, such as SSH port, are within the range mentioned in the following table.

Table 3: Port Range for ISSU

Version	Default port-range
9.3(1)	Kstack local port range (15001 - 58000) Netstack local port range (58001 - 63535) nat port range (63536 - 65535)
9.3(2)	Kstack local port range (15001 - 58000) Netstack local port range (58001 - 63535) nat port range (63536 - 65535)
9.3(3) onwards	Kstack local port range (15001 - 58000) Netstack local port range (58001 - 60535) nat port range (60536 - 65535)

You can use the **show sockets local-port-range** command to view the port range on the sender/responder.

The following is an example of viewing the netstack port range:

```
switch# show sockets local-port-range

Kstack local port range (15001 - 22002)
Netstack local port range (22003 - 65535)
```

Configuring and Scheduling a UDP Jitter Operation on the Source Device

This section describes how to configure and schedule a UDP jitter operation.

Configuring the IP SLAs Responder on the Destination Device

This section describes how to configure the responder on the destination device.



Note A responder should not configure a permanent port for the same sender. If the responder configures the permanent port for the same sender, even if the packets are successfully sent (no timeout or packet loss issues), the jitter values are zero.

SUMMARY STEPS

1. **enable**
2. **configure terminal**
3. **feature sla responder**
4. Do one of the following:
 - **ip sla responder**
Example: switch(config)# ip sla responder
 - **ip sla responder udp-echo ipaddress ip-address port port**
Example: switch(config)# ip sla responder udp-echo
 ipaddress 172.29.139.132 port 5000
5. **exit**

DETAILED STEPS

	Command or Action	Purpose
Step 1	enable Example: switch> enable	Enables privileged EXEC mode. Enter your password if prompted.
Step 2	configure terminal Example: switch# configure terminal	Enters global configuration mode.
Step 3	feature sla responder Example: switch(config)# feature sla responder	Enables the IP SLAs responder feature.
Step 4	Do one of the following: <ul style="list-style-type: none"> • ip sla responder <i>Example:</i> switch(config)# ip sla responder • ip sla responder udp-echo ipaddress ip-address port port <i>Example:</i> switch(config)# ip sla responder udp-echo ipaddress 172.29.139.132 port 5000 	- <ul style="list-style-type: none"> • (Optional) Temporarily enables the responder functionality on a Cisco device in response to control messages from a source. • (Optional) Required only if protocol control is disabled on a source. Permanently enables the responder functionality on the specified IP addresses and port. Control is enabled by default.
Step 5	exit Example: switch(config)# exit	(Optional) Exits global configuration mode and returns to privileged EXEC mode.

Configuring and Scheduling a Basic UDP Jitter Operation on the Source Device

This section describes how to configure and schedule a basic UDP jitter operation on the source device.



Tip

- If the IP SLAs operation is not running and generating statistics, add the **verify-data** command to the configuration of the operation (while configuring in IP SLA configuration mode) to enable data verification. When enabled, each operation response is checked for corruption. Use the **verify-data** command with caution during normal operations because it generates unnecessary overhead.
- Use the **debug ip sla sender trace** and **debug ip sla sender error** commands to help troubleshoot issues with an IP SLAs operation.

SUMMARY STEPS

1. **enable**
2. **configure terminal**
3. **feature sla sender**
4. **ip sla operation-number**
5. **udp-jitter** {*destination-ip-address* | *destination-hostname*} *destination-port* [**source-ip** {*ip-address* | *hostname*}] [**sourceport** *port-number*] [**control** { **enable**| **disable**}] [**num-packets** *number-of-packets*] [**interval** *interpacket-interval*]
6. **frequency** *seconds*
7. **exit**
8. **ip sla schedule** *operation-number* [**life** {*forever*| *seconds*}] [**start-time** {*hh:mm[:ss]* [*month day* | *day month*] | **pending** | **now** | **after** *hh:mm:ss*}] [**ageout** *seconds*] [**recurring**]
9. **exit**
10. **show ip sla configuration** [*operation-number*]

DETAILED STEPS

	Command or Action	Purpose
Step 1	enable Example: switch# enable	Enables privileged EXEC mode. Enter your password if prompted.
Step 2	configure terminal Example: switch# configure terminal	Enters global configuration mode.
Step 3	feature sla sender Example: switch(config)# feature sla sender	Enables the IP SLAs operation feature.
Step 4	ip sla operation-number Example:	Begins configuration for an IP SLAs operation and enters IP SLA configuration mode.

	Command or Action	Purpose
	<code>switch(config)# ip sla 10</code>	
Step 5	<p>udp-jitter {<i>destination-ip-address</i> <i>destination-hostname</i>} <i>destination-port</i> [source-ip {<i>ip-address</i> <i>hostname</i>}] [sourceport <i>port-number</i>] [control { enable disable}] [num-packets <i>number-of-packets</i>] [interval <i>interpacket-interval</i>]</p> <p>Example:</p> <pre>switch(config-ip-sla)# udp-jitter 172.29.139.134 5000</pre>	<p>Configures the IP SLAs operation as a UDP jitter operation and enters UDP jitter configuration submode.</p> <p>Use the control disable keyword combination only if you disable the IP SLAs control protocol on both the source and target switches.</p>
Step 6	<p>frequency <i>seconds</i></p> <p>Example:</p> <pre>switch(config-ip-sla-jitter)# frequency 30</pre>	(Optional) Sets the rate at which a specified IP SLAs operation repeats.
Step 7	<p>exit</p> <p>Example:</p> <pre>switch(config-ip-sla-jitter)# exit</pre>	Exits UDP jitter configuration submode and returns to global configuration mode.
Step 8	<p>ip sla schedule <i>operation-number</i> [life {<i>forever</i> <i>seconds</i>}] [start-time {<i>hh:mm:ss</i>] [<i>month day</i> <i>day month</i>] pending now after <i>hh:mm:ss</i>] [ageout <i>seconds</i>] [recurring]</p> <p>Example:</p> <pre>switch(config)# ip sla schedule 5 start-time now life forever</pre>	Configures the scheduling parameters for an individual IP SLAs operation.
Step 9	<p>exit</p> <p>Example:</p> <pre>switch(config)# exit</pre>	(Optional) Exits global configuration mode and returns to privileged EXEC mode.
Step 10	<p>show ip sla configuration [<i>operation-number</i>]</p> <p>Example:</p> <pre>switch# show ip sla configuration 10</pre>	(Optional) Displays configuration values including all defaults for all IP SLAs operations or a specified operation.

What to do next

To add proactive threshold conditions and reactive triggering for generating traps or for starting another operation, see the "Configuring Proactive Threshold Monitoring" section.

To view and interpret the results of an IP SLAs operation, use the **show ip sla statistics** command. Checking the output for fields that correspond to criteria in your service level agreement helps you to determine whether the service metrics are acceptable.

Configuring and Scheduling a UDP Jitter Operation with Additional Characteristics

This section describes how to configure and schedule a UDP jitter operation with additional characteristics.

- The IP SLAs UDP jitter operation does not support the IP SLAs History feature (statistics history buckets) because of the large data volume involved with UDP jitter operations, which means that the following commands are not supported for UDP jitter operations: **history buckets-kept**, **history filter**, **historylives-kept**, **samples-of-history-kept**, and **show ip sla history**.
- The MIB used by IP SLAs (CISCO-RTTMON-MIB) limits the hours-of-statistics kept for the UDP jitter operation to two hours. Configuring a larger value using the **history hours-of-statistics***hours* global configuration change does not increase the value beyond two hours. However, the Data Collection MIB can be used to collect historical data for the operation. For information, see the CISCO-DATA-COLLECTION-MIB at <http://www.cisco.com/go/mibs>.



Tip

- If the IP SLAs operation is not running and generating statistics, add the **verify-data** command to the configuration of the operation (while configuring in IP SLA configuration mode) to enable data verification. When enabled, each operation response is checked for corruption. Use the **verify-data** command with caution during normal operations because it generates unnecessary overhead.
- Use the **debug ip sla sender trace** and **debug ip sla sender error** commands to help troubleshoot issues with an IP SLAs operation.

Before you begin

Before configuring a UDP jitter operation on the source device, the IP SLAs Responder must be enabled on the target device (the operational target). The IP SLAs Responder is available only on Cisco NX-OS software based devices. To enable the responder, perform the task in the “Configuring the IP SLAs Responder on the Destination Device” section.

SUMMARY STEPS

1. **enable**
2. **configure terminal**
3. **feature sla sender**
4. **ip sla** *operation-number*
5. **udp-jitter** {*destination-ip-address* | *destination-hostname*} *destination-port* [**source-ip** {*ip-address* | *hostname*}] [**source-port** *port-number*] [**control** {**enable** | **disable**}] [**num-packets***number-of-packets*] [**interval** *interpacket-interval*]
6. **history distributions-of-statistics-kept** *size*
7. **history enhanced** [**interval** *seconds*] [**buckets** *number-of-buckets*]
8. **frequency** *seconds*
9. **history hours-of-statistics-kept** *hours*
10. **owner** *owner-id*
11. **request-data-size** *bytes*
12. **history statistics-distribution-interval** *milliseconds*
13. **tag** *text*
14. **threshold** *milliseconds*
15. **timeout** *milliseconds*
16. **tos** *number*
17. **verify-data**
18. **vrf** *vrf-name*
19. **exit**

20. **ip sla schedule** *operation-number* [**life** {**forever**| *seconds*}] [**start-time** {*hh:mm[:ss]* [*monthday* | *daymonth*] | **pending** | **now** | **after***hh:mm:ss*}] [**ageoutseconds**] [**recurring**]
21. **exit**
22. **show ip sla configuration** [*operation-number*]

DETAILED STEPS

	Command or Action	Purpose
Step 1	enable Example: Switch> enable	Enables privileged EXEC mode. • Enter your password if prompted.
Step 2	configure terminal Example: Switch# configure terminal	Enters global configuration mode.
Step 3	feature sla sender Example: switch(config)# feature sla sender	Enables the IP SLAs operation feature.
Step 4	ip sla <i>operation-number</i> Example: Switch(config)# ip sla 10	Begins configuration for an IP SLAs operation and enters IP SLA configuration mode.
Step 5	udp-jitter { <i>destination-ip-address</i> <i>destination-hostname</i> } <i>destination-port</i> [source-ip { <i>ip-address</i> <i>hostname</i> }] [source-port <i>port-number</i>] [control { enable disable }] [num-packets <i>number-of-packets</i>] [interval <i>interpacket-interval</i>] Example: Switch(config-ip-sla)# udp-jitter 172.29.139.134 5000	Configures the IP SLAs operation as a UDP jitter operation and enters UDP jitter configuration submenu. • Use the control disable keyword combination only if you disable the IP SLAs control protocol on both the source and target switches.
Step 6	history distributions-of-statistics-kept <i>size</i> Example: Switch(config-ip-sla-jitter)# history distributions-of-statistics-kept 5	(Optional) Sets the number of statistics distributions kept per hop during an IP SLAs operation.
Step 7	history enhanced [interval <i>seconds</i>] [buckets <i>number-of-buckets</i>] Example: Switch(config-ip-sla-jitter)# history enhanced interval 900 buckets 100	(Optional) Enables enhanced history gathering for an IP SLAs operation.

	Command or Action	Purpose
Step 8	frequency <i>seconds</i> Example: <pre>Switch(config-ip-sla-jitter)# frequency 30</pre>	(Optional) Sets the rate at which a specified IP SLAs operation repeats.
Step 9	history hours-of-statistics-kept <i>hours</i> Example: <pre>Switch(config-ip-sla-jitter)# history hours-of-statistics-kept 4</pre>	(Optional) Sets the number of hours for which statistics are maintained for an IP SLAs operation.
Step 10	owner <i>owner-id</i> Example: <pre>Switch(config-ip-sla-jitter)# owner admin</pre>	(Optional) Configures the Simple Network Management Protocol (SNMP) owner of an IP SLAs operation.
Step 11	request-data-size <i>bytes</i> Example: <pre>Switch(config-ip-sla-jitter)# request-data-size 64</pre>	(Optional) Sets the protocol data size in the payload of an IP SLAs operation's request packet.
Step 12	history statistics-distribution-interval <i>milliseconds</i> Example: <pre>Switch(config-ip-sla-jitter)# history statistics-distribution-interval 10</pre>	(Optional) Sets the time interval for each statistics distribution kept for an IP SLAs operation.
Step 13	tag <i>text</i> Example: <pre>Switch(config-ip-sla-jitter)# tag TelnetPollServer1</pre>	(Optional) Creates a user-specified identifier for an IP SLAs operation.
Step 14	threshold <i>milliseconds</i> Example: <pre>Switch(config-ip-sla-jitter)# threshold 10000</pre>	(Optional) Sets the upper threshold value for calculating network monitoring statistics created by an IP SLAs operation.
Step 15	timeout <i>milliseconds</i> Example: <pre>Switch(config-ip-sla-jitter)# timeout 10000</pre>	(Optional) Sets the amount of time an IP SLAs operation waits for a response from its request packet.
Step 16	tos <i>number</i> Example: <pre>Switch(config-ip-sla-jitter)# tos 160</pre>	(Optional) In an IPv4 network only, defines the ToS byte in the IPv4 header of an IP SLAs operation.

	Command or Action	Purpose
Step 17	verify-data Example: <pre>Switch(config-ip-sla-jitter)# verify-data</pre>	(Optional) Causes an IP SLAs operation to check each reply packet for data corruption.
Step 18	vrf vrf-name Example: <pre>Switch(config-ip-sla-jitter)# vrf vpn-A</pre>	(Optional) Allows monitoring within Multiprotocol Label Switching (MPLS) Virtual Private Networks (VPNs) using IP SLAs operations.
Step 19	exit Example: <pre>Switch(config-ip-sla-jitter)# exit</pre>	Exits UDP jitter configuration submode and returns to global configuration mode.
Step 20	ip sla schedule operation-number [life {forever seconds}] [start-time {hh:mm[:ss]} [monthday daymonth] pending now afterhh:mm:ss}] [ageoutseconds] [recurring] Example: <pre>Switch(config)# ip sla schedule 5 start-time now life forever</pre>	Configures the scheduling parameters for an individual IP SLAs operation.
Step 21	exit Example: <pre>Switch(config)# exit</pre>	(Optional) Exits global configuration mode and returns to privileged EXEC mode.
Step 22	show ip sla configuration [operation-number] Example: <pre>Switch# show ip sla configuration 10</pre>	(Optional) Displays configuration values including all defaults for all IP SLAs operations or a specified operation.

What to do next

To add proactive threshold conditions and reactive triggering for generating traps or for starting another operation, see the Configuring Proactive Threshold Monitoring section.

To view and interpret the results of IP SLAs operations, use the **show ip sla statistics** command. Checking the output for fields that correspond to criteria in your service level agreement will help you determine whether the service metrics are acceptable.

Configuration Example for a UDP Jitter Operation

This example shows two operations that are configured as UDP jitter operations, with operation 2 starting five seconds after the first operation. Both operations will run indefinitely.

```
feature sla sender
ip sla 1
  udp-jitter 20.0.10.3 65051 num-packets 20
  request-data-size 160
  tos 128
  frequency 30
ip sla schedule 1 start-time after 00:05:00
ip sla 2
  udp-jitter 20.0.10.3 65052 num-packets 20 interval 10
  request-data-size 20
  tos 64
  frequency 30
ip sla schedule 2 start-time after 00:05:05
```

On the target (destination) device:

```
feature sla responder
ip sla responder
```




CHAPTER 4

Configuring IP SLAs UDP Jitter Operations for VoIP

This chapter describes how to configure an IP Service Level Agreements (SLAs) User Datagram Protocol (UDP) jitter operation to proactively monitor Voice over IP (VoIP) quality levels in your network, allowing you to guarantee VoIP quality levels to your users in IPv4 networks. The IP SLAs VoIP UDP jitter operation accurately simulates VoIP traffic using common codecs and calculates consistent voice quality scores, such as Mean Opinion Score (MOS) and Calculated Planning and Improvement Factor (ICPIF), between Cisco devices in the network.



Note In this document, the term Voice refers to Internet telephony applications. The term Voice over IP can include the transmission of multimedia (both voice and video) over IP networks.

This chapter includes the following sections:

- [Guidelines and Limitations for IP SLAs UDP Jitter Operations for VoIP, on page 21](#)
- [Calculated Planning Impairment Factor, on page 22](#)
- [Mean Opinion Scores, on page 23](#)
- [Voice Performance Monitoring Using IP SLAs, on page 24](#)
- [Codec Simulation Within IP SLAs, on page 24](#)
- [IP SLAs ICPIF Value, on page 25](#)
- [IP SLAs MOS Value, on page 26](#)
- [Configuring and Scheduling an IP SLAs VoIP UDP Jitter Operation, on page 28](#)
- [Configuration Examples for IP SLAs VoIP UDP Operation, on page 31](#)
- [Configuration Examples for IP SLAs VoIP UDP Operation Statistics Output, on page 33](#)

Guidelines and Limitations for IP SLAs UDP Jitter Operations for VoIP

- **show** commands with the **internal** keyword are not supported.
- This feature uses UDP traffic to generate approximate Voice over IP scores. It does not provide support for the Real-Time Transport Protocol (RTP).

- The Calculated Planning Impairment Factor (ICPIF) and MOS values provided by this feature, while consistent within IP SLAs, are estimates only and are intended only for relative comparisons. The values may not match values that are determined using other methods.
- Predictions of customer opinion (such as those listed for the E-Model transmission rating factor R and derived Mean Opinion Scores) that are determined by any method are intended only for transmission planning and analysis purposes and should not be interpreted as reflecting actual customer opinions.
- One-way delay (latency) measurements do not support the microsecond unit of measurement. Other units of measurement, such as the millisecond, are supported.

Calculated Planning Impairment Factor

The ICPIF originated in the 1996 version of ITU-T recommendation G.113, “Transmission impairments,” as part of the formula $I_{cpif} = I_{tot} - A$. An ICPIF refers to the “calculated planning impairment factor.” The ICPIF attempts to quantify, for comparison and planning purposes, the key impairments to voice quality that are encountered in the network.

The ICPIF is the sum of measured impairment factors (total impairments or I_{tot}) minus a user-defined access Advantage Factor (A) that is intended to represent the user’s expectations, based on how the call was placed (for example, a mobile call versus a land-line call). In its expanded form, the full formula is expressed as follows:

$$I_{cpif} = I_o + I_q + I_{dte} + I_{dd} + I_e - A$$

where

- I_o represents impairments caused by nonoptimal loudness rating.
- I_q represents impairments caused by PCM quantizing distortion.
- I_{dte} represents impairments caused by talker echo.
- I_{dd} represents impairments caused by one-way transmission times (one-way delay).
- I_e represents impairments caused by equipment effects, such as the type of codec used for the call and packet loss.
- A represents an access Advantage Factor (also called the user Expectation Factor) that compensates for users who might accept some degradation in quality in return for ease of access.

ICPIF values are expressed in a typical range of 5 (very low impairment) to 55 (very high impairment). ICPIF values numerically less than 20 are generally considered “adequate.” While intended to be an objective measure of voice quality, the ICPIF value is also used to predict the subjective effect of combinations of impairments.

The following table, taken from G.113 (02/96), shows how sample ICPIF values are expected to correspond to subjective quality judgement.

Upper Limit for ICPIF	Speech Communication Quality
5	Very good
10	Good
20	Adequate

30	Limiting case
45	Exceptional limiting case
55	Customers likely to react strongly (complaints, change of network operator)

For more details on the ICPIF, see the 1996 version of the G.113 specification.



Note The latest version of the ITU-T G.113 Recommendation (2001), no longer includes the ICPIF model. Instead, G.107 states “The Impairment Factor method, used by the E-model of ITU-T G.107, is now recommended. The earlier method that used Quantization Distortion Units is no longer recommended.” The full E-Model (also called the ITU-T Transmission Rating Model), expressed as $R = Ro - Is - Id - Ie + A$, provides the potential for more accurate measurements of call quality by refining the definitions of impairment factors (see the 2003 version of the G.107 for details). Though the ICPIF shares terms for impairments with the E-Model, the two models are different. The IP SLAs VoIP UDP Operation feature takes advantage of observed correspondences between the ICPIF, transmission rating factor R, and MOS values, but does not support the E-Model.

Mean Opinion Scores

The quality of transmitted speech is a subjective response of the listener. Each codec used for transmission of VoIP provides a certain level of quality. A common benchmark used to determine the quality of sound produced by specific codecs is the mean opinion score (MOS). With MOS, a wide range of listeners have judged the quality of voice samples sent using particular codecs, on a scale of 1 (poor quality) to 5 (excellent quality). The opinion scores are averaged to provide the mean for each sample.

The following table shows MOS ratings and the corresponding description of quality for each value.

Table 4: MOS Ratings

Score	Quality	Description of Quality Impairment
5	Excellent	Imperceptible
4	Good	Just perceptible, but not annoying
3	Fair	Perceptible and slightly annoying
2	Poor	Annoying but not objectionable
1	Bad	Very annoying and objectionable

As the MOS ratings for codecs and other transmission impairments are known, an estimated MOS can be computed and displayed based on measured impairments. This estimated value is designated as MOS-CQE (Mean Opinion Score; Conversational Quality, Estimated) by the ITU in order to distinguish it from objective or subjective MOS values (see P.800.1 for details).

Voice Performance Monitoring Using IP SLAs

One of the key metrics in measuring voice and video quality over an IP network is jitter. Jitter indicates the variation in delay between arriving packets (inter-packet delay variance). Jitter affects voice quality by causing uneven gaps in the speech pattern of the person talking. Other key performance parameters for voice and video transmission over IP networks include latency (delay) and packet loss. IP SLAs allow you to simulate and measure these parameters in order to ensure your network is meeting or exceeding service-level agreements with your users.

IP SLAs provide a UDP jitter operation, which consists of UDP probe packets sent across the network from an origin device to a specific destination (called the operational target). This synthetic traffic is used to record the amount of jitter for the connection, as well as the round-trip time, per-direction packet loss, and one-way delay time (one-way latency). (Synthetic traffic indicates that the network traffic is simulated; that is, the traffic is generated by IP SLAs.) Data, in the form of collected statistics, can be displayed for multiple tests over a user-defined period of time, allowing you to see, for example, how the network performs at different times of the day or over the course of a week. The jitter probe can use the IP SLAs Responder to provide minimal latency at the receiving end.

The IP SLAs VoIP UDP jitter operation modifies the standard UDP jitter operation by adding the capability to return MOS and ICPIF scores in the data collected by the operation, in addition to the metrics already gathered by the UDP jitter operation. This VoIP-specific implementation allows you to determine the performance of your VoIP network.

Codec Simulation Within IP SLAs

The IP SLAs VoIP UDP jitter operation computes statistics by sending n UDP packets, each of size s , sent t milliseconds apart, from a given source switch to a given target switch, at a given frequency f . The target switch must be running the IP SLAs Responder in order to process the probe operations.

To generate MOS and ICPIF scores, you specify the codec type used for the connection when configuring the VoIP UDP jitter operation. Based on the type of codec that you configure for the operation, the number of packets (n), the size of each payload (s), the inter-packet time interval (t), and the operational frequency (f) are automatically configured with default values. However, you are given the option, if needed, to manually configure these parameters in the syntax of the **udp-jitter** command.

The following table shows the default parameters that are configured for the operation by codec.

Table 5: Default VoIP UDP Jitter Operation Parameters by Codec

Codec	Default Request Size (Packet Payload) (s)	Default Interval Between Packets (t)	Default Number of Packets (n)	Frequency of Probe Operations (f)
G.711 mu-Law (g711ulaw)	160 + 12 RTP bytes	20 ms	1000	Once every 1 minute
G.711 A-Law (g711alaw)	160 + 12 RTP bytes	20 ms	1000	Once every 1 minute
G.729A (g729a)	20 + 12 RTP bytes	20 ms	1000	Once every 1 minute

For example, if you configure the VoIP UDP jitter operation to use the characteristics for the g711ulaw codec, by default a probe operation is sent once a minute (**f**). Each probe operation consists of 1000 packets (**n**), each packet containing 180 bytes of synthetic data (**s**), sent 20 milliseconds apart (**t**).

IP SLAs ICPIF Value

ICPIF value computation with the Cisco NX-OS software is based primarily on the two main factors that can impair voice quality: delayed packets and lost packets. Because packet delay and packet loss can be measured by IP SLAs, the ICPIF formula, $Icpif=Io+Iq+Idte+Idd+Ie-A$, is simplified by assuming that the values of Io , Iq , and $Idte$ are zero, as follows:

Total Impairment Factor (Icpif) = Delay Impairment Factor (Idd) + Equipment Impairment Factor (Ie) — Expectation/Advantage Factor (A)

The ICPIF value is computed by adding a Delay Impairment Factor, which is based on a measurement of delayed packets, and an Equipment Impairment Factor, which is based on a measurement of lost packets. From this sum of the total impairments measured in the network, an impairment variable (the Expectation Factor) is subtracted to yield the ICPIF.

Cisco gateways use this formula to calculate the ICPIF for received VoIP data streams.

Delay Impairment Factor

The Delay Impairment Factor (Idd) is a number based on two values. One value is fixed and is derived using the static values (as defined in the ITU standards) for Codec Delay, Look Ahead Delay, and Digital Signal Processing (DSP) Delay. The second value is a variable and is based on the measured one-way delay (round-trip time measurement divided by 2). The one-way delay value is mapped to a number using a mapping table that is based on a G.107 (2002 version) analytic expression.

The following table shows sample correspondences between the one-way delay measured by IP SLAs and Delay Impairment Factor values.

Table 6: Sample Correspondence of One-Way Delay to ICPIF Delay Impairment

One-Way Delay (ms)	Delay Impairment Factor
50	1
100	2
150	4
200	7

Equipment Impairment Factor

The Equipment Impairment Factor (Ie) is a number based on the amount of measured packet loss. The amount of measured packet loss, expressed as a percentage of total number of packets sent, corresponds with an Equipment Impairment Factor that is defined by the codec.

The following table shows sample correspondences between the packet loss measured by IP SLAs and Equipment Impairment Factor values corresponding with each other.

Table 7: Sample Correspondence of Measured Packet Loss to ICPIF Equipment Impairment

Packet Loss (as a percentage of total number of packets sent)	Equipment Impairment Value for PCM (G.711) Codecs	Equipment Impairment Value for the CS-ACELP (G.729A) Codec
2%	12	20
4%	22	30
6%	28	38
8%	32	42

Expectation Factor

The Expectation Factor, also called the Advantage Factor (*A*), represents the expectation that users might accept some degradation in quality in return for ease of access. For example, a mobile phone user in a hard-to-reach location might expect that the connection quality will not be as good as a traditional land-line connection. This variable is also called the Advantage Factor (short for Access Advantage Factor) because it attempts to balance an increased access advantage against a decline in voice quality.

The table below, adapted from ITU-T Rec. G.113, defines a set of provisional maximum values for *A* in terms of the service provided.

Table 8: Advantage Factor Recommended Maximum Values

Communication Service	Advantage/Expectation Factor: Maximum value of <i>A</i>
Conventional wire-line (land-line)	0
Mobility (cellular connections) within a building	5
Mobility within a geographical area or moving in a vehicle	10
Access to hard-to-reach location; (for example, via multi-hop satellite connections)	20

These values are only suggestions. To be meaningful, you should use the factor *A* and its selected value in a specific application consistently in any planning model that you adopt. However, the values in the table should be considered as the absolute upper limits for *A*.

The default Advantage Factor for IP SLAs VoIP UDP jitter operations is always zero.

IP SLAs MOS Value

IP SLAs use an observed correspondence between ICPIF and MOS values to estimate an MOS value.



Note The abbreviation MOS represents MOSCQE (Mean Opinion Score; Conversational Quality, Estimated).

The E model, as defined in G.107 (03/2003), predicts the subjective quality that is experienced by an average listener by combining the impairment caused by transmission parameters (such as loss and delay) into a single rating, the transmission rating factor R (the R Factor). This rating, expressed in a scale of 0 (worst) to 100 (best), can be used to predict subjective user reactions, such as the MOS. Specifically, the MOS can be obtained from the R Factor with a converting formula. Conversely, a modified inverted form can be used to calculate R Factors from MOS values.

There is also a relationship between the ICPIF value and the R Factor. IP SLAs takes advantage of this correspondence by deriving the approximate MOS score from an estimated R Factor, which, in turn, is derived from the ICPIF score.

The following table shows the MOS values that are generated for corresponding ICPIF values.

Table 9: Correspondence of ICPIF Values to MOS Values

ICPIF Range	MOS	Quality Category
0 - 3	5	Best
4 - 13	4	High
14 - 23	3	Medium
24 - 33	2	Low
34 - 43	1	Poor

IP SLAs always express the estimated MOS value as a number in the range of 1 to 5, with 5 being the best quality. A MOS value of 0 (zero) indicates that MOS data could not be generated for the operation.

Configuring and Scheduling an IP SLAs VoIP UDP Jitter Operation



Note

- Currently, IP SLAs supports only the following speech codecs (compression methods):
 - G.711 A Law (g711alaw: 64 kbps PCM compression method)
 - G.711 mu Law (g711ulaw: 64 kbps PCM compression method)
 - G.729A (g729a: 8 kbps CS-ACELP compression method)
- The following commands, available in UDP jitter configuration mode, are not valid for UDP jitter (codec) operations:
 - **history distributions-of-statistics-kept**
 - **history statistics-distribution-interval**
 - **request-data-size**
- Specifying the **codec-type** will configure the appropriate default values for the **codec-interval**, **codec-size**, and **codec-numpacket** options. You should not specify values for the interval, size, and number of packet options unless you have a specific reason to override the defaults (for example, approximating a different codec).
- The **show ip sla configuration** command will list the values for the number of statistic distribution buckets kept and statistic distribution interval (microseconds), but these values do not apply to jitter (codec) operations.



Tip

- If the IP SLAs operation is not running and generating statistics, add the **verify-data** command to the configuration of the operation (while configuring in IP SLA configuration mode) to enable data verification. When enabled, each operation response is checked for corruption. Use the **verify-data** command with caution during normal operations because it generates unnecessary overhead.
- Use the **debug ip sla trace** and **debug ip sla error** commands to help troubleshoot issues with an IP SLAs operation.

SUMMARY STEPS

1. **enable**
2. **configure terminal**
3. **feature sla sender**
4. **ip sla** *operation-number*
5. **udp-jitter** {*destination-ip-address* | *destination-hostname*} *destination-port* **codec** *codec-type* [**codec-numpackets** *number-of-packets*] [**codec-size** *number-of-bytes*] [**codec-interval** *milliseconds*] [**advantage-factor** *value*] [**source-ip** {*ip-address* | *hostname*}] [**source-port** *port-number*] [**control** {**enable** | **disable**}]
6. **history enhanced** [**interval** *seconds*] [**buckets** *number-of-buckets*]
7. **frequency** *seconds*
8. **history hours-of-statistics-kept** *hours*

9. **owner** *owner-id*
10. **tag** *text*
11. **threshold** *microseconds*
12. **timeout** *microseconds*
13. **tos** *number*
14. **verify-data**
15. **vrf** *vrf-name*
16. **exit**
17. **ip sla schedule** *operation-number* [**life** {**forever**| *seconds*}] [**start-time** {*hh:mm[:ss]* [*monthday* | *daymonth*] | **pending** | **now** | **after** *hh:mm:ss*}] [**ageout** *seconds*] [**recurring**]
18. **exit**
19. **show ip sla configuration** [*operation-number*]

DETAILED STEPS

	Command or Action	Purpose
Step 1	enable Example: <pre>switch> enable</pre>	Enables privileged EXEC mode. <ul style="list-style-type: none"> • Enter your password if prompted.
Step 2	configure terminal Example: <pre>switch# configure terminal</pre>	Enters global configuration mode.
Step 3	feature sla sender Example: <pre>switch(config)# feature sla sender</pre>	Enables the IP SLAs operation feature.
Step 4	ip sla <i>operation-number</i> Example: <pre>switch(config)# ip sla 10</pre>	Begins configuration for an IP SLAs operation and enters IP SLA configuration mode.
Step 5	udp-jitter { <i>destination-ip-address</i> <i>destination-hostname</i> } <i>destination-port</i> codec <i>codec-type</i> [codec-numpackets <i>number-of-packets</i>] [codec-size <i>number-of-bytes</i>] [codec-interval <i>milliseconds</i>] [advantage-factor <i>value</i>] [source-ip { <i>ip-address</i> <i>hostname</i> }] [source-port <i>port-number</i>] [control { enable disable }] Example: <pre>switch(config-ip-sla)# udp-jitter 209.165.200.225 16384 codec g711alaw advantage-factor 10</pre>	Configures the operation as a jitter (codec) operation that will generate VoIP scores in addition to latency, jitter, and packet loss statistics.

	Command or Action	Purpose
Step 6	<p>history enhanced [<i>interval seconds</i>] [<i>buckets number-of-buckets</i>]</p> <p>Example:</p> <pre>switch(config-ip-sla-jitter)# history enhanced interval 900 buckets 100</pre>	(Optional) Enables enhanced history gathering for an IP SLAs operation.
Step 7	<p>frequency <i>seconds</i></p> <p>Example:</p> <pre>switch(config-ip-sla-jitter)# frequency 30</pre>	(Optional) Sets the rate at which a specified IP SLAs operation repeats.
Step 8	<p>history hours-of-statistics-kept <i>hours</i></p> <p>Example:</p> <pre>switch(config-ip-sla-jitter)# history hours-of-statistics-kept 4</pre>	(Optional) Sets the number of hours for which statistics are maintained for an IP SLAs operation.
Step 9	<p>owner <i>owner-id</i></p> <p>Example:</p> <pre>switch(config-ip-sla-jitter)# owner admin</pre>	(Optional) Configures the Simple Network Management Protocol (SNMP) owner of an IP SLAs operation.
Step 10	<p>tag <i>text</i></p> <p>Example:</p> <pre>switch(config-ip-sla-jitter)# tag TelnetPollServer1</pre>	(Optional) Creates a user-specified identifier for an IP SLAs operation.
Step 11	<p>threshold <i>microseconds</i></p> <p>Example:</p> <pre>switch(config-ip-sla-jitter)# threshold 10000</pre>	(Optional) Sets the upper threshold value for calculating network monitoring statistics created by an IP SLAs operation.
Step 12	<p>timeout <i>microseconds</i></p> <p>Example:</p> <pre>switch(config-ip-sla-jitter)# timeout 10000</pre>	(Optional) Sets the amount of time an IP SLAs operation waits for a response from its request packet.
Step 13	<p>tos <i>number</i></p> <p>Example:</p> <pre>switch(config-ip-sla-jitter)# tos 160</pre>	(Optional) In an IPv4 network only, defines the ToS byte in the IPv4 header of an IP SLAs operation.
Step 14	<p>verify-data</p> <p>Example:</p> <pre>switch(config-ip-sla-jitter)# verify-data</pre>	(Optional) Causes an IP SLAs operation to check each reply packet for data corruption.

	Command or Action	Purpose
Step 15	vrf <i>vrf-name</i> Example: <pre>switch(config-ip-sla-jitter)# vrf vpn-A</pre>	(Optional) Allows monitoring within Multiprotocol Label Switching (MPLS) Virtual Private Networks (VPNs) using IP SLAs operations.
Step 16	exit Example: <pre>switch(config-ip-sla-jitter)# exit</pre>	Exits UDP jitter configuration submode and returns to global configuration mode.
Step 17	ip sla schedule <i>operation-number</i> [life { forever <i>seconds</i> }] [start-time { <i>hh:mm[:ss]</i> <i>monthday</i> <i>daymonth</i> }] pending now after <i>hh:mm:ss</i>] [ageout <i>seconds</i>] [recurring] Example: <pre>switch(config)# ip sla schedule 5 start-time now life forever</pre>	Configures the scheduling parameters for an individual IP SLAs operation.
Step 18	exit Example: <pre>switch(config)# exit</pre>	(Optional) Exits global configuration mode and returns to privileged EXEC mode.
Step 19	show ip sla configuration [<i>operation-number</i>] Example: <pre>switch# show ip sla configuration 10</pre>	(Optional) Displays configuration values including all defaults for all IP SLAs operations or a specified operation.

What to do next

To add proactive threshold conditions and reactive triggering for generating traps or for starting another operation, see the Configuring Proactive Threshold Monitoring section.

To view and interpret the results of an IP SLAs operation use the **show ip sla statistics** command. Checking the output for fields that correspond to criteria in your service level agreement will help you determine whether the service metrics are acceptable.

Configuration Examples for IP SLAs VoIP UDP Operation

This example assumes that the IP SLAs Responder is enabled on the device at 101.101.101.1:

```
switch# conf terminal
Enter configuration commands, one per line. End with CNTL/Z.
switch(config)# feature sla sender
switch(config)# ip sla 10
switch(config-ip-sla)# udp-jitter 101.101.101.1 16384 codec g711alaw advantage-factor 2
switch(config-ip-sla-jitter)# owner admin_bofh
switch(config-ip-sla-jitter)# precision microseconds
```

```

switch(config-ip-sla-jitter)# exit
switch(config)# ip sla schedule 10 start-time now
switch(config)# exit
switch# show ip sla config 10
IP SLAs Infrastructure Engine-III
Entry number: 10
Owner: admin_bofh
Tag:
Operation timeout (milliseconds): 5000
Type of operation to perform: udp-jitter
Target address/Source address: 101.101.101.1/0.0.0.0
Target port/Source port: 16384/0
Type Of Service parameter: 0x0
Codec type: g711alaw
Codec Number Of Packets: 1000
Codec Packet Size: 172
Codec Interval (milliseconds): 20
Advantage Factor: 2
Verify data: No
Operation Stats Precision : microseconds
Operation Packet Priority : normal
NTP Sync Tolerance : 0 percent
Vrf Name: default
Control Packets: enabled
Schedule:
  Operation frequency (seconds): 60 (not considered if randomly scheduled)
  Next Scheduled Start Time: Start Time already passed
  Group Scheduled : FALSE
  Randomly Scheduled : FALSE
  Life (seconds): 3600
  Entry Ageout (seconds): never
  Recurring (Starting Everyday): FALSE
  Status of entry (SNMP RowStatus): Active
Threshold (milliseconds): 5000
Distribution Statistics:
  Number of statistic hours kept: 2
  Number of statistic distribution buckets kept: 1
  Statistic distribution interval (microseconds): 20

switch#

switch# show running-config | begin "ip sla 10"
ip sla 10
  udp-jitter 101.101.101.1 16384 codec g711alaw advantage-factor 2
  precision microseconds
  owner admin_bofh
ip sla schedule 10 start-time now
no logging console
.
.
.
switch# show ip sla configuration 10
Entry number: 10
Owner: admin_bofh
Tag:
Type of operation to perform: jitter
Target address: 101.101.101.1
Source address: 0.0.0.0
Target port: 16384
Source port: 0
Operation timeout (milliseconds): 5000
Codec Type: g711alaw
Codec Number Of Packets: 1000
Codec Packet Size: 172

```

```

Codec Interval (milliseconds): 20
Advantage Factor: 2
Type Of Service parameters: 0x0
Verify data: No
Vrf Name:
Control Packets: enabled
Operation frequency (seconds): 60
Next Scheduled Start Time: Start Time already passed
Life (seconds): 3600
Entry Ageout (seconds): never
Status of entry (SNMP RowStatus): Active
Connection loss reaction enabled: No
Timeout reaction enabled: No
Verify error enabled: No
Threshold reaction type: Never
Threshold (milliseconds): 5000
Threshold Falling (milliseconds): 3000
Threshold Count: 5
Threshold Count2: 5
Reaction Type: None
Number of statistic hours kept: 2
Number of statistic distribution buckets kept: 1
Statistic distribution interval (microseconds): 20
Enhanced History:

```

When a codec type is configured for a jitter operation, the standard jitter “Request size (ARR data portion),” “Number of packets,” and “Interval (microseconds)” parameters do not appear in the **show ip sla** configuration command output. Instead, values for “Codec Packet Size,” “Codec Number of Packets,” and “Codec Interval (microseconds)” appear.

Configuration Examples for IP SLAs VoIP UDP Operation Statistics Output

This example shows how to display voice scores (ICPIF and MOS values) for the jitter (codec) operation:

```

switch# show ip sla st
IPSLAs Latest Operation Statistics
IPSLA operation id: 1
Type of operation: udp-jitter
    Latest RTT: 11999 microseconds
Latest operation start time: 02:39:33 UTC Sat May 05 2012
Latest operation return code: OK
Latest operation NTP sync state: NO_SYNC
RTT Values:
    Number Of RTT: 10
RTT Min/Avg/Max: 9000/11999/17000 microseconds
Latency one-way time:
    Number of Latency one-way Samples: 0
    Source to Destination Latency one way Min/Avg/Max: 0/0/0 microseconds
    Destination to Source Latency one way Min/Avg/Max: 0/0/0 microseconds
Jitter Time:
    Number of SD Jitter Samples: 9
    Number of DS Jitter Samples: 9
    Source to Destination Jitter Min/Avg/Max: 0/223/2001 microseconds
    Destination to Source Jitter Min/Avg/Max: 0/2001/6001 microseconds
Packet Loss Values:

```

```
Loss Source to Destination: 0  
Source to Destination Loss Periods Number: 0
```



CHAPTER 5

Configuring IP SLAs UDP Echo Operations

This chapter describes how to configure an IP Service Level Agreements (SLAs) User Datagram Protocol (UDP) Echo operation to monitor end-to-end response time between a Cisco switch and devices using IPv4. UDP echo accuracy is enhanced by using the IP SLAs Responder at the destination Cisco switch. This module also demonstrates how the results of the UDP echo operation can be displayed and analyzed to determine how a UDP application is performing.

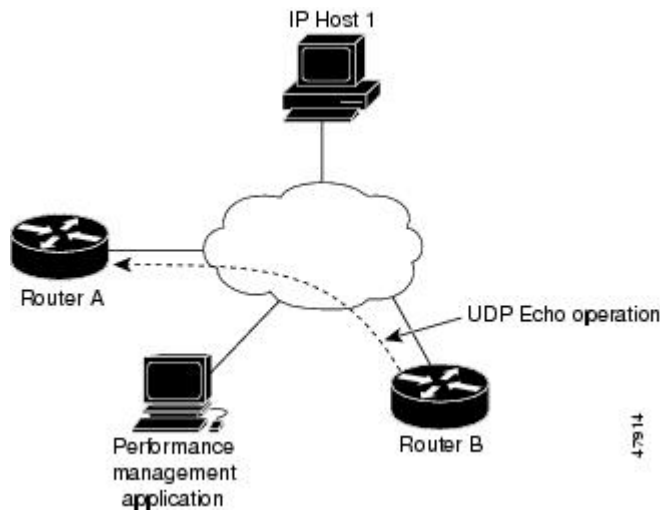
This chapter includes the following sections:

- [UDP Echo Operation, on page 35](#)
- [Guidelines and Limitations for UDP Echo Operations, on page 36](#)
- [Configuring the IP SLAs Responder on the Destination Device, on page 38](#)
- [Configuring a Basic UDP Echo Operation on the Source Device, on page 39](#)
- [Configuring a UDP Echo Operation with Optional Parameters on the Source Device, on page 40](#)
- [Scheduling IP SLAs Operations, on page 44](#)
- [Configuration Example for a UDP Echo Operation, on page 46](#)

UDP Echo Operation

The UDP echo operation measures end-to-end response time between a Cisco switch and devices using IP. UDP is a transport layer (Layer 4) Internet protocol that is used for many IP services. UDP echo is used to measure response times and test end-to-end connectivity.

In the following figure, Switch A is configured as an IP SLAs Responder and Switch B is configured as the source IP SLAs device.



The response time (round-trip time) is computed by measuring the time taken between sending a UDP echo request message from Switch B to the destination switch--Switch A--and receiving a UDP echo reply from Switch A. UDP echo accuracy is enhanced by using the responder at Switch A, the destination Cisco switch. If the destination switch is a Cisco switch, the IP SLAs Responder sends a UDP datagram to any port number that you specified. Using the IP SLAs Responder is optional for a UDP echo operation when using Cisco devices. The IP SLAs Responder cannot be configured on non-Cisco devices.

The results of a UDP echo operation can be useful in troubleshooting issues with business-critical applications by determining the round-trip delay times and testing connectivity to both Cisco and non- Cisco devices.

Guidelines and Limitations for UDP Echo Operations

- `show` commands with the `internal` keyword are not supported.

Configuring CoPP for IP SLA Packets

When using IP SLA operations on a large scale, a specific CoPP configuration to allow the IP SLA packets to pass through might be needed. Because IP SLA uses user-defined UDP ports, there is no way to allow all IP SLA packets to the control plane. However, you can specify each destination/source port that IP SLA can use.

For more information about the verified scalability of the number of IP SLA probes, see the *Cisco Nexus 9000 Series NX-OS Verified Scalability Guide*.

The following CoPP configuration example allows IP SLA packets to pass through. It assumes destination ports and source ports in the range of 6500-7000. In this example, if “insert-before” is not specified, “copp-ipsla” will be added after “class-default.”



Note The following configuration example might vary based on platform/hardware type. Please refer to the Cisco Nexus 9000 Series NX-OS Security Configuration Guide for details about configuring IP ACL and CoPP.


```

ip access-list acl-sla-allow
 10 remark ### ALLOW SLA control packets from 1.1.1.0/24
 20 permit udp 1.1.1.0/24 any eq 1967
 30 remark ### ALLOW SLA data packets from 1.1.1.0/24 using ports 6500-7000
 40 permit udp 1.1.1.0/24 any range 6500 7000

class-map type control-plane match-any copp-ipsla
 match access-group name acl-sla-allow

policy-map type control-plane Custom-copp-policy-strict
 class copp-ipsla insert-before Custom-copp-class-l2-default
 police cir 1500 kbps

control-plane
 service-policy input Custom-copp-policy-strict

switch# show policy-map interface control-plane | be copp-ipsla
class-map copp-ipsla (match-any)
 match access-group name acl-sla-allow
 set cos 7
 police cir 1500 kbps , bc 32000 bytes
 module 1 :
   transmitted 0 bytes;
   dropped 0 bytes;

class-map Custom-copp-class-l2-default (match-any)
 match access-group name Custom-copp-acl-mac-undesirable
 set cos 0
 police cir 400 kbps , bc 32000 bytes
 module 1 :
   transmitted 0 bytes;
   dropped 0 bytes;

class-map class-default (match-any)
 set cos 0
 police cir 400 kbps , bc 32000 bytes
 module 1 :
   transmitted 122 bytes;
   dropped 0 bytes;

```

Matching the Netstack Port Range

IP SLA only accepts ports within the local netstack port range. The source and destination ports used in the probe's configuration must match the supported netstack ports on the SLA sender and the SLA responder.

When performing ISSU from earlier versions to version 9.3(1) and later versions, ensure that the features with user-defined ports, such as SSH port, are within the range mentioned in the following table.

Table 10: Port Range for ISSU

Version	Default port-range
9.3(1)	Kstack local port range (15001 - 58000) Netstack local port range (58001 - 63535) nat port range (63536 - 65535)

Version	Default port-range
9.3(2)	Kstack local port range (15001 - 58000) Netstack local port range (58001 - 63535) nat port range (63536 - 65535)
9.3(3) onwards	Kstack local port range (15001 - 58000) Netstack local port range (58001 - 60535) nat port range (60536 - 65535)

You can use the **show sockets local-port-range** command to view the port range on the sender/responder.

The following is an example of viewing the netstack port range:

```
switch# show sockets local-port-range

Kstack local port range (15001 - 22002)
Netstack local port range (22003 - 65535)
```

Configuring the IP SLAs Responder on the Destination Device

Before you begin

If you are using the IP SLAs Responder, ensure that the networking device to be used as the responder is a Cisco device and that you have connectivity to that device through the network.

SUMMARY STEPS

1. **enable**
2. **configure terminal**
3. **feature sla responder**
4. Do one of the following:

- **ip sla responder**

Example:

```
switch(config)# ip sla responder
```

- **ip sla responder udp-echo ipaddress *ip-address* port *port***

Example:

```
switch(config)# ip sla responder udp-echo ipaddress 172.29.139.132 port 5000
```

5. **exit**

DETAILED STEPS

	Command or Action	Purpose
Step 1	enable Example: <pre>switch> enable</pre>	Enables privileged EXEC mode Enter your password if prompted.
Step 2	configure terminal Example: <pre>switch# configure terminal</pre>	Enters global configuration mode.
Step 3	feature sla responder Example: <pre>switch(config)# feature sla responder</pre>	Enables the IP SLAs responder feature.
Step 4	Do one of the following: <ul style="list-style-type: none"> • ip sla responder Example: <pre>switch(config)# ip sla responder</pre> • ip sla responder udp-echo ipaddress <i>ip-address</i> port <i>port</i> Example: <pre>switch(config)# ip sla responder udp-echo ipaddress 172.29.139.132 port 5000</pre> 	- <ul style="list-style-type: none"> • Temporarily enables the IP SLAs Responder functionality on a Cisco device in response to control messages from the source. • Required only if the protocol control is disabled on the source. This command permanently enables the IP SLAs Responder functionality on a specified IP address and port. Control is enabled by default.
Step 5	exit Example: <pre>switch(config)# exit</pre>	Exits global configuration mode and returns to privileged EXEC mode.

Configuring a Basic UDP Echo Operation on the Source Device

This section describes how to configure a basic UDP echo operation on the source.



Note To add proactive threshold conditions and reactive triggering for generating traps, or for starting another operation, to an IP SLAs operation, see the "Configuring Proactive Threshold Monitoring" section.

Before you begin

If you are using the IP SLAs Responder, ensure that you have completed the "Configuring the IP SLAs Responder on the Destination Device" section before you start this task.

SUMMARY STEPS

1. **enable**
2. **configure terminal**
3. **ip sla operation-number**
4. **udp-echo** {*destination-ip-address* | *destination-hostname*} *destination-port* [**source-ip** {*ip-address* | *hostname*} **sourceport** *port-number*] [**control** {**enable** | **disable**}]
5. (Optional) **frequency** *seconds*
6. (Optional) **end**

DETAILED STEPS

	Command or Action	Purpose
Step 1	enable Example: switch> enable	Enables privileged EXEC mode. Enter your password if prompted.
Step 2	configure terminal Example: switch# configure terminal	Enters global configuration mode.
Step 3	ip sla operation-number Example: switch(config)# ip sla 10	Begins configuration for an IP SLAs operation and enters IP SLA configuration mode.
Step 4	udp-echo { <i>destination-ip-address</i> <i>destination-hostname</i> } <i>destination-port</i> [source-ip { <i>ip-address</i> <i>hostname</i> } sourceport <i>port-number</i>] [control { enable disable }] Example: switch(config-ip-sla)# udp-echo 172.29.139.134 5000	Defines a UDP echo operation and enters IP SLA UDP configuration mode. Use the control disable keyword combination only if you disable the IP SLAs control protocol on both the source and target switches.
Step 5	(Optional) frequency <i>seconds</i> Example: switch(config-ip-sla-udp)# frequency 30	Sets the rate at which a specified IP SLAs operation repeats.
Step 6	(Optional) end Example: switch(config-ip-sla-udp)# end	Returns to privileged EXEC mode.

Configuring a UDP Echo Operation with Optional Parameters on the Source Device

This section describes how to configure a UDP echo operation with optional parameters on the source device.



Note To add proactive threshold conditions and reactive triggering for generating traps, or for starting another operation, to an IP SLAs operation, see the "Configuring Proactive Threshold Monitoring" section.

Before you begin

If you are using an IP SLAs Responder in this operation, the responder must be configured on the destination device. See the "Configuring the IP SLAs Responder on the Destination Device" section.

SUMMARY STEPS

1. **enable**
2. **configure terminal**
3. **ip sla operation-number**
4. **udp-echo** {*destination-ip-address* | *destination-hostname*} *destination-port* [**source-ip** {*ip-address* | *hostname*} **sourceport** *port-number*] [**control** {**enable** | **disable**}]
5. (Optional) **history buckets-kept** *size*
6. (Optional) **data-pattern** *hex-pattern*
7. (Optional) **history distributions-of-statistics-kept** *size*
8. (Optional) **history enhanced** [**interval** *seconds*] [**buckets** *number-of-buckets*]
9. (Optional) **history filter** {**none** | **all** | **overThreshold** | **failures**}
10. (Optional) **frequency** *seconds*
11. (Optional) **history hours-of-statistics-kept** *hours*
12. (Optional) **history lives-kept** *lives*
13. (Optional) **owner** *owner-id*
14. (Optional) **request-data-size** *bytes*
15. (Optional) **history statistics-distribution-interval** *milliseconds*
16. (Optional) **tag** *text*
17. (Optional) **threshold** *milliseconds*
18. (Optional) **timeout** *milliseconds*
19. (Optional) **tos** *number*
20. (Optional) **verify-data**
21. **exit**

DETAILED STEPS

	Command or Action	Purpose
Step 1	enable Example: switch> enable	Enables privileged EXEC mode. Enter your password if prompted.
Step 2	configure terminal Example: switch# configure terminal	Enters global configuration mode.

	Command or Action	Purpose
Step 3	ip sla <i>operation-number</i> Example: switch(config)# ip sla 10	Begins configuration for an IP SLAs operation and enters IP SLA configuration mode.
Step 4	udp-echo { <i>destination-ip-address</i> <i>destination-hostname</i> } <i>destination-port</i> [source-ip { <i>ip-address</i> <i>hostname</i> } sourceport <i>port-number</i>] [control { enable disable }] Example: switch(config-ip-sla)# udp-echo 172.29.139.134 5000	Defines a UDP echo operation and enters IP SLA UDP configuration mode. Use the control disable keyword combination only if you disable the IP SLAs control protocol on both the source and target switches.
Step 5	(Optional) history buckets-kept <i>size</i> Example: switch(config-ip-sla-udp)# history buckets-kept 25	Sets the number of history buckets that are kept during the lifetime of an IP SLAs operation.
Step 6	(Optional) data-pattern <i>hex-pattern</i> Example: switch(config-ip-sla-udp)# data-pattern	Specifies the data pattern in an IP SLAs operation to test for data corruption.
Step 7	(Optional) history distributions-of-statistics-kept <i>size</i> Example: switch(config-ip-sla-udp)# history distributionsof- statistics-kept 5	Sets the number of statistics distributions kept per hop during an IP SLAs operation.
Step 8	(Optional) history enhanced [interval <i>seconds</i>] [buckets <i>number-of-buckets</i>] Example: switch(config-ip-sla-udp)# history enhanced interval 900 buckets 100	Enables enhanced history gathering for an IP SLAs operation.
Step 9	(Optional) history filter { none all overThreshold failures } Example: switch(config-ip-sla-udp)# history filter failures	Defines the type of information kept in the history table for an IP SLAs operation.
Step 10	(Optional) frequency <i>seconds</i> Example: switch(config-ip-sla-udp)# frequency 30	Sets the rate at which a specified IP SLAs operation repeats.
Step 11	(Optional) history hours-of-statistics-kept <i>hours</i> Example: switch(config-ip-sla-udp)# history hours-ofstatistics- kept 4	Sets the number of hours for which statistics are maintained for an IP SLAs operation.

	Command or Action	Purpose
Step 12	(Optional) history lives-kept <i>lives</i> Example: switch(config-ip-sla-udp)# history lives-kept 5	Sets the number of lives maintained in the history table for an IP SLAs operation.
Step 13	(Optional) owner <i>owner-id</i> Example: switch(config-ip-sla-udp)# owner admin	Configures the Simple Network Management Protocol (SNMP) owner of an IP SLAs operation.
Step 14	(Optional) request-data-size <i>bytes</i> Example: switch(config-ip-sla-udp)# request-data-size 64	Sets the protocol data size in the payload of an IP SLAs operation's request packet.
Step 15	(Optional) history statistics-distribution-interval <i>milliseconds</i> Example: switch(config-ip-sla-udp)# history statistics distribution- interval 10	Sets the time interval for each statistics distribution kept for an IP SLAs operation.
Step 16	(Optional) tag <i>text</i> Example: switch(config-ip-sla-udp)# tag TelnetPollServer1	Creates a user-specified identifier for an IP SLAs operation.
Step 17	(Optional) threshold <i>milliseconds</i> Example: switch(config-ip-sla-udp)# threshold 10000	Sets the upper threshold value for calculating network monitoring statistics created by an IP SLAs operation.
Step 18	(Optional) timeout <i>milliseconds</i> Example: switch(config-ip-sla-udp)# timeout 10000	Sets the amount of time an IP SLAs operation waits for a response from its request packet.
Step 19	(Optional) tos <i>number</i> Example: switch(config-ip-sla-jitter)# tos 160	In an IPv4 network only, defines the ToS byte in the IPv4 header of an IP SLAs operation.
Step 20	(Optional) verify-data Example: switch(config-ip-sla-udp)# verify-data	Causes an IP SLAs operation to check each reply packet for data corruption.
Step 21	exit Example: switch(config-ip-sla-udp)# exit	Exits UDP configuration submode and returns to global configuration mode.

Scheduling IP SLAs Operations

This section describes how to schedule IP SLAs operations.

Before you begin



Note

- All IP SLAs operations to be scheduled must be already configured.
- The frequency of all operations scheduled in a multioperation group must be the same.
- The list of one or more operation ID numbers to be added to a multioperation group is limited to a maximum of 125 characters, including commas (,).



Tip

- If the IP SLAs operation is not running and generating statistics, add the **verify-data** command to the configuration of the operation (while configuring in IP SLA configuration mode) to enable data verification. When enabled, each operation response is checked for corruption. Use the **verify-data** command with caution during normal operations because it generates unnecessary overhead.
- Use the **debug ip sla trace** and **debug ip sla error** commands to help troubleshoot issues with an IP SLAs operation.

SUMMARY STEPS

1. **enable**
2. **configure terminal**
3. Do one of the following:
 - **ip sla schedule** *operation-number* [**life forever** { | *seconds*}] [**starttime** {*hh : mm[: ss]* [*month day* | *day month*]} | **pending** | **now** | **after** *hh : mm : ss*] [**ageout seconds**] [**recurring**]

Example:

```
ip sla schedule operation-number [life {forever | seconds}] [starttime {hh : mm[:
ss] [month day | day month] | pending | now | after hh : mm : ss}] [ageout seconds]
[recurring]
```

- **ip sla group schedule** *group-operation-number operation-id-numbers schedule-period* *schedule-period-range* [**ageout seconds**] [**frequency** *group-operation-frequency*] [**life**{**forever** | *seconds*}] [**starttime**{ *hh:mm[:ss]* [*month day* | *day month*]} | **pending** | **now** | **after** *hh:mm:ss*}]

Example:

```
switch(config)# ip sla group schedule 1 3,4,6-9
```

4. **exit**
5. **show ip sla group schedule**
6. **show ip sla configuration**

DETAILED STEPS

	Command or Action	Purpose
Step 1	enable Example: <pre>switch> enable</pre>	Enables privileged EXEC mode. Enter your password if prompted.
Step 2	configure terminal Example: <pre>switch# configure terminal</pre>	Enters global configuration mode.
Step 3	Do one of the following: <ul style="list-style-type: none"> • ip sla schedule <i>operation-number</i> [life forever { <i>seconds</i>}] [starttime {<i>hh : mm[: ss]</i> [<i>month day day month</i>] pending now after <i>hh : mm : ss</i>}] [ageout seconds] [recurring] Example: <pre>ip sla schedule operation-number [life {forever seconds}] [starttime {hh : mm[: ss] [month day day month] pending now after hh : mm : ss}] [ageout seconds] [recurring]</pre> <ul style="list-style-type: none"> • ip sla group schedule <i>group-operation-number operation-id-numbers schedule-period schedule-period-range</i> [ageout seconds] [frequency group-operation-frequency] [life{forever <i>seconds</i>}] [starttime{ <i>hh:mm[:ss]</i> [<i>month day day month</i>] pending now after <i>hh:mm:ss</i>}] Example: <pre>switch(config)# ip sla group schedule 1 3,4,6-9</pre>	- <ul style="list-style-type: none"> • For individual IP SLAs operations only: Configures the scheduling parameters for an individual IP SLAs operation. • For the multioperations scheduler only: Specifies an IP SLAs operation group number and the range of operation numbers to be scheduled in global configuration mode.
Step 4	exit Example: <pre>switch(config)# exit</pre>	Exits to privileged EXEC mode.
Step 5	show ip sla group schedule Example: <pre>switch# show ip sla group schedule</pre>	(Optional) Displays the IP SLAs group schedule details.
Step 6	show ip sla configuration Example: <pre>switch# show ip sla configuration</pre>	(Optional) Displays the IP SLAs configuration details.

What to do next

To add proactive threshold conditions and reactive triggering for generating traps or for starting another operation, see the Configuring Proactive Threshold Monitoring section.

To view and interpret the results of an IP SLAs operation, use the **show ip sla statistics** command. Checking the output for fields that correspond to criteria in your service level agreement will help you determine whether the service metrics are acceptable.

Configuration Example for a UDP Echo Operation

This example shows how to configure an IP SLAs operation type of UDP echo that starts immediately and runs indefinitely:

```
ip sla 5
udp-echo 172.29.139.134 5000
frequency 30
request-data-size 160
tos 128
timeout 1000
tag FLL-RO
ip sla schedule 5 life forever start-time now
```



CHAPTER 6

Configuring IP SLAs TCP Connect Operations

This chapter describes how to configure an IP Service Level Agreements (SLAs) TCP Connect operation to measure the response time taken to perform a TCP Connect operation between a Cisco switch and devices using IPv4. TCP Connect accuracy is enhanced by using the IP SLAs Responder at the destination Cisco switch. This chapter also describes how the results of the TCP Connect operation can be displayed and analyzed to determine how the connection times to servers and hosts within your network can affect IP service levels. The TCP Connect operation is useful for measuring response times for a server used for a particular application or connectivity testing for server availability.

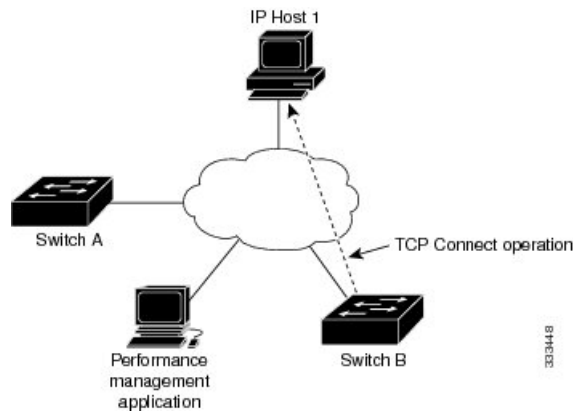
This chapter includes these sections.

- [Information About the TCP Connect Operation, on page 47](#)
- [Guidelines and Limitations for Configuring IP SLAs TCP Connect Operations, on page 48](#)
- [Configuring the IP SLAs Responder on the Destination Device, on page 50](#)
- [Configuring and Scheduling a TCP Connect Operation on the Source Device, on page 51](#)
- [Configuration Example for a TCP Connect Operation, on page 59](#)

Information About the TCP Connect Operation

The IP SLAs TCP Connect operation measures the response time that is taken to perform a TCP Connect operation between a Cisco switch and devices using IP. TCP is a transport layer (Layer 4) Internet Protocol that provides reliable full-duplex data transmission. The destination device can be any device using IP or an IP SLAs Responder.

In the following figure, Switch B is configured as the source IP SLAs device and a TCP Connect operation is configured with the destination device as IP Host 1.



The connection response time is computed by measuring the time that is taken between sending a TCP request message from Switch B to IP Host 1 and receiving a reply from IP Host 1.

TCP Connect accuracy is enhanced by using the IP SLAs Responder at the destination Cisco device. If the destination switch is a Cisco switch, the IP SLAs Responder makes a TCP connection to any port number that you specified. If the destination is not a Cisco IP host, then you must specify a known destination port number such as 21 for FTP, 23 for Telnet, or 80 for an HTTP server.

Using the IP SLAs Responder is optional for a TCP Connect operation when using Cisco devices. The IP SLAs Responder cannot be configured on non-Cisco devices.

TCP Connect is used to test virtual circuit availability or application availability. Server and application connection performance can be tested by simulating Telnet, SQL, and other types of connections to help you verify your IP service levels.

Guidelines and Limitations for Configuring IP SLAs TCP Connect Operations

- `show` commands with the `internal` keyword are not supported.

Configuring CoPP for IP SLA Packets

When using IP SLA operations on a large scale, a specific CoPP configuration to allow the IP SLA packets to pass through might be needed. Because IP SLA uses user-defined UDP ports, there is no way to allow all IP SLA packets to the control plane. However, you can specify each destination/source port that IP SLA can use.

For more information about the verified scalability of the number of IP SLA probes, see the *Cisco Nexus 9000 Series NX-OS Verified Scalability Guide*.

The following CoPP configuration example allows IP SLA packets to pass through. It assumes destination ports and source ports in the range of 6500-7000. In this example, if “insert-before” is not specified, “copp-ipsla” will be added after “class-default.”



Note The following configuration example might vary based on platform/hardware type. Please refer to the Cisco Nexus 9000 Series NX-OS Security Configuration Guide for details about configuring IP ACL and CoPP.

```
ip access-list acl-sla-allow
 10 remark ### ALLOW SLA control packets from 1.1.1.0/24
 20 permit udp 1.1.1.0/24 any eq 1967
 30 remark ### ALLOW SLA data packets from 1.1.1.0/24 using ports 6500-7000
 40 permit udp 1.1.1.0/24 any range 6500 7000

class-map type control-plane match-any copp-ipsla
 match access-group name acl-sla-allow

policy-map type control-plane Custom-copp-policy-strict
 class copp-ipsla insert-before Custom-copp-class-l2-default
 police cir 1500 kbps

control-plane
 service-policy input Custom-copp-policy-strict

switch# show policy-map interface control-plane | be copp-ipsla
class-map copp-ipsla (match-any)
 match access-group name acl-sla-allow
 set cos 7
 police cir 1500 kbps , bc 32000 bytes
 module 1 :
   transmitted 0 bytes;
   dropped 0 bytes;

class-map Custom-copp-class-l2-default (match-any)
 match access-group name Custom-copp-acl-mac-undesirable
 set cos 0
 police cir 400 kbps , bc 32000 bytes
 module 1 :
   transmitted 0 bytes;
   dropped 0 bytes;

class-map class-default (match-any)
 set cos 0
 police cir 400 kbps , bc 32000 bytes
 module 1 :
   transmitted 122 bytes;
   dropped 0 bytes;
```

Matching the Netstack Port Range

IP SLA only accepts ports within the local netstack port range. The source and destination ports used in the probe's configuration must match the supported netstack ports on the SLA sender and the SLA responder.

When performing ISSU from earlier versions to version 9.3(1) and later versions, ensure that the features with user-defined ports, such as SSH port, are within the range mentioned in the following table.

Table 11: Port Range for ISSU

Version	Default port-range
9.3(1)	Kstack local port range (15001 - 58000) Netstack local port range (58001 - 63535) nat port range (63536 - 65535)
9.3(2)	Kstack local port range (15001 - 58000) Netstack local port range (58001 - 63535) nat port range (63536 - 65535)
9.3(3) onwards	Kstack local port range (15001 - 58000) Netstack local port range (58001 - 60535) nat port range (60536 - 65535)

You can use the **show sockets local-port-range** command to view the port range on the sender/responder.

The following is an example of viewing the netstack port range:

```
switch# show sockets local-port-range

Kstack local port range (15001 - 22002)
Netstack local port range (22003 - 65535)
```

Configuring the IP SLAs Responder on the Destination Device

This section describes how to configure the IP SLAs Responder on the destination device.

Before you begin

If you are using the IP SLAs Responder, ensure that the networking device to be used as the responder is a Cisco device and that you have connectivity to that device through the network.

SUMMARY STEPS

1. **enable**
2. **configure terminal**
3. **feature sla responder**
4. Do one of the following:
 - **ip sla responder**
Example:

```
switch(config)# ip sla responder
```
 - **ip sla responder tcp-connect ipaddress ip-address port port**
Example:

```
switch(config)# ip sla responder tcp-connect ipaddress 172.29.139.132 port 5000
```

5. exit

DETAILED STEPS

	Command or Action	Purpose
Step 1	enable Example: <pre>switch> enable</pre>	Enables privileged EXEC mode. Enter your password if prompted.
Step 2	configure terminal Example: <pre>switch# configure terminal</pre>	Enters global configuration mode.
Step 3	feature sla responder Example: <pre>switch(config)# feature sla responder</pre>	Enables the IP SLAs responder feature.
Step 4	Do one of the following: <ul style="list-style-type: none"> • ip sla responder Example: <pre>switch(config)# ip sla responder</pre> • ip sla responder tcp-connect ipaddress ip-address port port Example: <pre>switch(config)# ip sla responder tcp-connect ipaddress 172.29.139.132 port 5000</pre> 	- <ul style="list-style-type: none"> • (Optional) Temporarily enables IP SLAs Responder functionality on a Cisco device in response to control messages from a source. • (Optional) Required only if protocol control is disabled on the source. The command permanently enables the IP SLAs Responder functionality on a specified IP address and port. Control is enabled by default.
Step 5	exit Example: <pre>switch(config)# exit</pre>	(Optional) Exits global configuration mode and returns to privileged EXEC mode.

Configuring and Scheduling a TCP Connect Operation on the Source Device

This section describes how to configure and schedule a TCP connect operation on the source device.

Perform only one of the following tasks to configure and schedule a TCP connect operation on the source device:

- Configuring and scheduling a basic TCP connect operation on the source device

- Configuring and scheduling a TCP connect operation with optional parameters on the source device

Configuring and Scheduling a Basic TCP Connect Operation on the Source Device

This section describes how to configure and schedule a basic TCP connect operation on a source device.



Note If an IP SLAs Responder is permanently enabled on the destination IP address and port, use the **control disable** keywords with the **tcp-connect** command to disable control messages.



- Tip**
- If the IP SLAs operation is not running and generating statistics, add the **verify-data** command to the configuration of the operation (while configuring in IP SLA configuration mode) to enable data verification. When enabled, each operation response is checked for corruption. Use the **verify-data** command with caution during normal operations because it generates unnecessary overhead.
 - Use the **debug ip sla sender trace** and **debug ip sla sender error** commands to help troubleshoot issues with an IP SLAs operation.

SUMMARY STEPS

1. **enable**
2. **configure terminal**
3. **feature sla sender**
4. **ip sla operation-number**
5. **tcp-connect** {*destination-ip-address* | *destination-hostname*} *destination-port* [**source-ip** {*ip-address* | *hostname*} **source-port***port-number*] [**control** {**enable** | **disable**}]
6. **frequency** *seconds*
7. **exit**
8. **ip sla schedule** *operation-number* [**life** {**forever** | *seconds*}] [**start-time** {*hh:mm[:ss]* [*monthday* | *daymonth*] | **pending** | **now** | **after** *hh:mm:ss*}] [**ageout** *seconds*] [**recurring**]
9. **exit**

DETAILED STEPS

	Command or Action	Purpose
Step 1	enable Example: <pre>switch> enable</pre>	Enables privileged EXEC mode. Enter your password if prompted.
Step 2	configure terminal Example:	Enters global configuration mode.

	Command or Action	Purpose
	<pre>switch# configure terminal</pre>	
Step 3	feature sla sender Example: <pre>switch(config)# feature sla sender</pre>	Enables the IP SLAs operation feature.
Step 4	ip sla operation-number Example: <pre>switch(config)# ip sla 10</pre>	Begins configuration for an IP SLAs operation and enters IP SLA configuration mode.
Step 5	tcp-connect { <i>destination-ip-address</i> <i>destination-hostname</i> } <i>destination-port</i> [source-ip { <i>ip-address</i> <i>hostname</i> } source-port <i>port-number</i>] [control { enable disable }] Example: <pre>switch(config-ip-sla)# tcp-connect 172.29.139.132 5000</pre>	Defines a TCP Connect operation and enters IP SLA TCP configuration mode. Use the control disable keyword combination only if you disable the IP SLAs control protocol on both the source and target switches.
Step 6	frequency <i>seconds</i> Example: <pre>switch(config-ip-sla-tcp)# frequency 60</pre>	(Optional) Sets the rate at which a specified IP SLAs operation repeats.
Step 7	exit Example: <pre>switch(config-ip-sla-tcp)# exit</pre>	Exits IP SLA TCP configuration mode and returns to global configuration mode.
Step 8	ip sla schedule <i>operation-number</i> [life { forever <i>seconds</i> }] [start-time { <i>hh:mm[:ss]</i> [<i>monthday</i> <i>daymonth</i>] pending now after <i>hh:mm:ss</i> }] [ageout <i>seconds</i>] [recurring] Example: <pre>switch(config)# ip sla schedule 10 start-time now life forever</pre>	Configures the scheduling parameters for an individual IP SLAs operation.
Step 9	exit Example: <pre>switch(config)# exit</pre>	(Optional) Exits the global configuration mode and returns to privileged EXEC mode.

Example

This example shows how to configure an IP SLAs operation type of TCP Connect that will start immediately and run indefinitely:

```
feature sla sender
ip sla 9
  tcp-connect 172.29.139.132 5000
  frequency 10
!
ip sla schedule 9 life forever start-time now
```

What to do next

To add proactive threshold conditions and reactive triggering for generating traps or for starting another operation, see the "Configuring Proactive Threshold Monitoring" section.

To view and interpret the results of an IP SLAs operation, use the **show ip sla statistics** command. Checking the output for fields that correspond to criteria in your service level agreement helps you to determine whether the service metrics are acceptable.

Configuring and Scheduling a TCP Connect Operation with Optional Parameters on the Source Device

This section describes how to configure and schedule a TCP connect operation with optional parameters on a source device.



Note If an IP SLAs Responder is permanently enabled on the destination IP address and port, use the **control disable** keywords with the **tcp-connect** command to disable control messages.



Tip

- If the IP SLAs operation is not running and generating statistics, add the **verify-data** command to the configuration of the operation (while configuring in IP SLA configuration mode) to enable data verification. When enabled, each operation response is checked for corruption. Use the **verify-data** command with caution during normal operations because it generates unnecessary overhead.
- Use the **debug ip sla trace** and **debug ip sla error** commands to help troubleshoot issues with an IP SLAs operation.

SUMMARY STEPS

1. **enable**
2. **configure terminal**
3. **feature sla sender**
4. **ip sla *operation-number***

5. **tcp-connect** *{destination-ip-address | destination-hostname} destination-port* [**source-ip** *{ip-address | hostname}* **source-port** *port-number*] [**control** *{enable | disable}*]
6. **history buckets-kept** *size*
7. **history distributions-of-statistics-kept** *size*
8. **history enhanced** [**interval** *seconds*] [**buckets** *number-of-buckets*]
9. **history filter** *{none | all | overThreshold | failures}*
10. **frequency** *seconds*
11. **history hours-of-statistics-kept** *hours*
12. **history lives-kept** *lives*
13. **owner** *owner-id*
14. **history statistics-distribution-interval** *milliseconds*
15. **tag** *text*
16. **threshold** *milliseconds*
17. **timeout** *milliseconds*
18. **tos** *number*
19. **exit**
20. **ip sla schedule** *operation-number* [**life** *{forever| seconds}*] [**start-time** *{hh:mm[:ss] [monthday | daymonth]}*] [**pending** | **now** | **after** *hh:mm:ss*] [**ageout** *seconds*] [**recurring**]
21. **exit**
22. **show ip sla configuration** [*operation-number*]

DETAILED STEPS

	Command or Action	Purpose
Step 1	enable Example: <pre>switch> enable</pre>	Enables privileged EXEC mode. Enter your password if prompted.
Step 2	configure terminal Example: <pre>switch# configure terminal</pre>	Enters global configuration mode.
Step 3	feature sla sender Example: <pre>switch(config)# feature sla sender</pre>	Enables the IP SLAs operation feature.
Step 4	ip sla <i>operation-number</i> Example: <pre>switch(config)# ip sla 10</pre>	Begins configuration for an IP SLAs operation and enters IP SLA configuration mode.
Step 5	tcp-connect <i>{destination-ip-address destination-hostname} destination-port</i> [source-ip <i>{ip-address hostname}</i> source-port <i>port-number</i>] [control <i>{enable disable}</i>]	Defines a TCP Connect operation and enters IP SLA TCP configuration mode.

	Command or Action	Purpose
	<p>Example:</p> <pre>switch(config-ip-sla)# tcp-connect 172.29.139.132 5000</pre>	Use the control disable keyword combination only if you disable the IP SLAs control protocol on both the source and target switches.
Step 6	<p>history buckets-kept <i>size</i></p> <p>Example:</p> <pre>switch(config-ip-sla-tcp)# history buckets-kept 25</pre>	(Optional) Sets the number of history buckets that are kept during the lifetime of an IP SLAs operation.
Step 7	<p>history distributions-of-statistics-kept <i>size</i></p> <p>Example:</p> <pre>switch(config-ip-sla-tcp)# history distributions-of-statistics-kept 5</pre>	(Optional) Sets the number of statistics distributions kept per hop during an IP SLAs operation.
Step 8	<p>history enhanced [<i>interval seconds</i>] [<i>buckets number-of-buckets</i>]</p> <p>Example:</p> <pre>switch(config-ip-sla-tcp)# history enhanced interval 900 buckets 100</pre>	(Optional) Enables enhanced history gathering for an IP SLAs operation.
Step 9	<p>history filter {<i>none</i> <i>all</i> <i>overThreshold</i> <i>failures</i>}</p> <p>Example:</p> <pre>switch(config-ip-sla-tcp)# history filter failures</pre>	(Optional) Defines the type of information that is kept in the history table for an IP SLAs operation.
Step 10	<p>frequency <i>seconds</i></p> <p>Example:</p> <pre>switch(config-ip-sla-tcp)# frequency 60</pre>	(Optional) Sets the rate at which a specified IP SLAs operation repeats.
Step 11	<p>history hours-of-statistics-kept <i>hours</i></p> <p>Example:</p> <pre>switch(config-ip-sla-tcp)# history hours-of-statistics-kept 4</pre>	(Optional) Sets the number of hours for which statistics are maintained for an IP SLAs operation.
Step 12	<p>history lives-kept <i>lives</i></p> <p>Example:</p> <pre>switch(config-ip-sla-tcp)# history lives-kept 5</pre>	(Optional) Sets the number of lives that are maintained in the history table for an IP SLAs operation.
Step 13	<p>owner <i>owner-id</i></p> <p>Example:</p> <pre>switch(config-ip-sla-tcp)# owner admin</pre>	(Optional) Configures the Simple Network Management Protocol (SNMP) owner of an IP SLAs operation.

	Command or Action	Purpose
Step 14	history statistics-distribution-interval <i>milliseconds</i> Example: <pre>switch(config-ip-sla-tcp)# history statistics-distribution-interval 10</pre>	(Optional) Sets the time interval for each statistics distribution kept for an IP SLAs operation.
Step 15	tag <i>text</i> Example: <pre>switch(config-ip-sla-tcp)# tag TelnetPollServer1</pre>	(Optional) Creates a user-specified identifier for an IP SLAs operation.
Step 16	threshold <i>milliseconds</i> Example: <pre>switch(config-ip-sla-tcp)# threshold 10000</pre>	(Optional) Sets the upper threshold value for calculating network monitoring statistics that are created by an IP SLAs operation.
Step 17	timeout <i>milliseconds</i> Example: <pre>switch(config-ip-sla-tcp)# timeout 10000</pre>	(Optional) Sets the amount of time an IP SLAs operation waits for a response from its request packet.
Step 18	tos <i>number</i> Example: <pre>switch(config-ip-sla-jitter)# tos 160</pre> Example:	(Optional) In an IPv4 network only, defines the ToS byte in the IPv4 header of an IP SLAs operation.
Step 19	exit Example: <pre>switch(config-ip-sla-tcp)# exit</pre>	Exits TCP configuration submode and returns to global configuration mode.
Step 20	ip sla schedule <i>operation-number</i> [life { forever <i>seconds</i> }] [start-time { <i>hh:mm[:ss]</i> [<i>monthday</i> <i>daymonth</i>] pending now after <i>hh:mm:ss</i> }] [ageout <i>seconds</i>] [recurring] Example: <pre>switch(config)# ip sla schedule 10 start-time now life forever</pre>	Configures the scheduling parameters for an individual IP SLAs operation.
Step 21	exit Example: <pre>switch(config)# exit</pre>	(Optional) Exits global configuration mode and returns to privileged EXEC mode.

	Command or Action	Purpose
Step 22	show ip sla configuration [<i>operation-number</i>] Example: <pre>switch# show ip sla configuration 10</pre>	(Optional) Displays configuration values including all defaults for all IP SLAs operations or a specified operation.

Example

This example shows how to configure all the IP SLAs parameters (including defaults) for the TCP Connect operation number 10:

```
switch# show ip sla configuration 10
IP SLAs Infrastructure Engine-III
Entry number: 10
Owner: admin
Tag: TelnetPollServer1
Operation timeout (milliseconds): 10000
Type of operation to perform: tcp-connect
Target address/Source address: 101.101.101.1/0.0.0.0
Target port/Source port: 5000/0
Type Of Service parameter: 0xa0
Vrf Name: default
Control Packets: enabled
Schedule:
  Operation frequency (seconds): 60 (not considered if randomly scheduled)
  Next Scheduled Start Time: Start Time already passed
  Group Scheduled : FALSE
  Randomly Scheduled : FALSE
  Life (seconds): Forever
  Entry Ageout (seconds): never
  Recurring (Starting Everyday): FALSE
  Status of entry (SNMP RowStatus): Active
Threshold (milliseconds): 10000
Distribution Statistics:
  Number of statistic hours kept: 4
  Number of statistic distribution buckets kept: 5
  Statistic distribution interval (milliseconds): 10
Enhanced History:
  Aggregation Interval:900 Buckets: 100
History Statistics:
  Number of history Lives kept: 0
  Number of history Buckets kept: 25
  History Filter Type: Failures
```

What to do next

To add proactive threshold conditions and reactive triggering for generating traps or for starting another operation, see the "Configuring Proactive Threshold Monitoring" section.

To view and interpret the results of an IP SLAs operation, use the **show ip sla statistics** command. Checking the output for fields that correspond to criteria in your service level agreement helps you to determine whether the service metrics are acceptable.

Configuration Example for a TCP Connect Operation

This example shows how to configure a TCP Connect operation from Switch B to the Telnet port (TCP port 23) of IP Host 1 (IP address 10.0.0.1), as shown in the "TCP Connect Operation" figure in the "Information About the IP SLAs TCP Connect Operation" section. The operation is scheduled to start immediately. In this example, the control protocol is disabled on the source (Switch B). IP SLAs use the control protocol to notify the IP SLAs Responder to enable the target port temporarily. This action allows the Responder to reply to the TCP Connect operation. In this example, because the target is not a switch and a well-known TCP port is used, there is no need to send the control message.

Switch A Configuration

```
configure terminal
  feature sla responder
  ip sla responder tcp-connect ipaddress 10.0.0.1 port 23
```

Switch B Configuration

```
configure terminal
  feature sla sender
  ip sla 9
    tcp-connect 10.0.0.1 23 control disable
    frequency 30
    tos 128
    timeout 1000
    tag FLL-RO
  ip sla schedule 9 start-time now
```

This example shows how to configure a TCP Connect operation with a specific port, port 21, and without an IP SLAs Responder. The operation is scheduled to start immediately and run indefinitely.

```
configure terminal
  feature sla sender
  ip sla 9
    tcp-connect 173.29.139.132 21 control disable
    frequency 30
  ip sla schedule 9 life forever start-time now
```




CHAPTER 7

Configuring an IP SLAs HTTP Operations

This chapter describes how to configure an HTTP IP Service Level Agreements (IP SLAs) operation.

This chapter includes the following sections:

- [Configuring an IP SLAs HTTP Operation, on page 61](#)
- [Configuring a Basic HTTP GET Operation , on page 62](#)
- [Configuring a HTTP GET Operation with Optional Parameters, on page 63](#)
- [Scheduling IP SLAs Operations, on page 65](#)
- [Troubleshooting Tips, on page 67](#)

Configuring an IP SLAs HTTP Operation

This chapter describes how to configure an IP Service Level Agreements (SLAs) HTTP operation to monitor the response time between a Cisco device and an HTTP server to retrieve a web page. The IP SLAs HTTP operation only supports the normal GET requests.

About IP SLAs HTTP Operations

An HTTP request can be made through a proxy server.

The HTTP operation measures the round-trip time (RTT) between a Cisco device and an HTTP server to retrieve a web page. The HTTP server response time measurements consist of three types:

- DNS lookup - RTT taken to perform a domain name lookup.
- TCP Connect - RTT taken to perform a TCP connection to the HTTP server.
- HTTP transaction time - RTT taken to send a request and get a response from the HTTP server. The operation retrieves only the home HTML page.

The HTTP operation first performs the DNS operation and measures the DNS RTT. Once the domain name is found, the HTTP operation performs a TCP Connect operation to the appropriate HTTP server. The HTTP operation then measures the TCP connect RTT. Finally, the HTTP operation sends a HTTP request to retrieve the home HTML page from the HTTP server. The HTTP operation then measures the RTT to retrieve the home HTML page. The HTTP operation makes another last measurement called "the time to first byte". This measures the time from the start of the TCP Connect operation to the first HTML byte retrieved by the HTTP operation. The total HTTP RTT is a sum of the DNS RTT, the TCP Connect RTT, and the HTTP RTT. You

can use the total HTTP RTT to monitor Web server performance levels by determining the RTT taken to retrieve a web page.

For GET requests, IP SLAs will format the request based on the specified URL.

Restrictions for IP SLAs HTTP Operations

IP SLAs HTTP operations have the following restrictions:

- IP SLAs HTTP operations only support the HTTP GET probe on the Cisco Nexus 9300 and 9500 Series switches beginning with Cisco NX-OS Release 7.0(3)I6(1).
- Setting the frequency to less than 60 seconds increases the number of packets sent. However, this might impact the performance of IP SLA operations when a scheduled operation has the same start time.

Configuring a Basic HTTP GET Operation

The HTTP GET method retrieves information (in the form of an entity) as identified by the Request-URL.

SUMMARY STEPS

1. **configure terminal**
2. **ip sla operation-number**
3. **http {get | url [version *version-number*] [source-ip {*ip-address* | *hostname*}] [source-port *port-number*] [cache {enable | disable}] [proxy *proxy-url*]}**
4. **frequency *seconds***
5. **end**

DETAILED STEPS

	Command or Action	Purpose
Step 1	configure terminal Example: <pre>switch# configure terminal switch(config)#</pre>	Enters global configuration mode.
Step 2	ip sla operation-number Example: <pre>switch(config)# ip sla 10</pre>	Begins configuration for an IP SLAs operation and enters IP SLA configuration mode.
Step 3	http {get url [version <i>version-number</i>] [source-ip {<i>ip-address</i> <i>hostname</i>}] [source-port <i>port-number</i>] [cache {enable disable}] [proxy <i>proxy-url</i>]} Example: <pre>switch(config-ip-sla-http)# http get http://198.133.219.25</pre>	Defines an HTTP operation and enters IP SLA configuration mode.

	Command or Action	Purpose
Step 4	frequency <i>seconds</i> Example: <pre>switch(config-ip-sla-http) # frequency 90</pre>	(Optional) Sets the repeat rate for a specified IP SLAs HTTP operation. The default and minimum frequency value for an IP SLAs HTTP operation is 60 seconds.
Step 5	end Example: <pre>switch(config-ip-sla-http) # end</pre>	Exits IP SLA config mode.

Configuring a HTTP GET Operation with Optional Parameters

SUMMARY STEPS

1. **configure terminal**
2. **ip sla operation-number**
3. **http** {**get** | **url** [**version** *version-number*] [**source-ip** {*ip-address* | *hostname*}] [**source-port** *port-number*] [**cache** {**enable** | **disable**}] [**proxy** *proxy-url*]
4. **history buckets-kept** *size*
5. **history distributions-of-statistics-kept** *size*
6. **history enhanced** [**interval** *seconds*] [**buckets** *number-of-buckets*]
7. **history filter** { **none** | **all** | **overThreshold** | **failures**}
8. **frequency** *seconds*
9. **history hours-of-statistics-kept** *hours*
10. **history live-kept** *lives*
11. **owner** *owner-id*
12. **history statistics-distribution-interval** *milliseconds*
13. **tag** *text*
14. **threshold** *milliseconds*
15. **timeout** *milliseconds*
16. **tos** *number*
17. **end**

DETAILED STEPS

	Command or Action	Purpose
Step 1	configure terminal Example: <pre>switch# configure terminal switch(config)#</pre>	Enters global configuration mode.
Step 2	ip sla operation-number Example: <pre>switch(config)# ip sla 10</pre>	Begins configuration for an IP SLAs operation and enters IP SLA configuration mode.

	Command or Action	Purpose
Step 3	<p>http {get url [version <i>version-number</i>] [source-ip {ip-address hostname}] [source-port <i>port-number</i>] [cache {enable disable}] [proxy <i>proxy-url</i>]</p> <p>Example:</p> <pre>switch(config-ip-sla)# http get http://198.133.219.25</pre>	Defines an HTTP operation and enters IP SLA configuration mode.
Step 4	<p>history buckets-kept <i>size</i></p> <p>Example:</p> <pre>switch(config-ip-sla-http)# history buckets-kept 25</pre>	(Optional) Sets the number of history buckets kept during the lifetime of an IP SLAs operation.
Step 5	<p>history distributions-of-statistics-kept <i>size</i></p> <p>Example:</p> <pre>switch(config-ip-sla-http)# history distribution-of-statistics-kept 5</pre>	(Optional) Sets the number of statistics distributions kept per hop during an IP SLAs operation.
Step 6	<p>history enhanced [interval <i>seconds</i>] [buckets <i>number-of-buckets</i>]</p> <p>Example:</p> <pre>switch(config-ip-sla-http)# history enhanced interval 900 buckets 100</pre>	(Optional) Enables enhanced history gathering for an IP SLAs operation.
Step 7	<p>history filter { none all overThreshold failures }</p> <p>Example:</p> <pre>switch(config-ip-sla-http)# history filter failures</pre>	(Optional) Defines the type of information kept in the history tables for an IP SLAs operation.
Step 8	<p>frequency <i>seconds</i></p> <p>Example:</p> <pre>switch(config-ip-sla-http)# frequency 90</pre>	(Optional) Sets the repeat rate for specified IP SLAs HTTP operation. The default and minimum frequency value for an IP SLAs HTTP operation is 60 seconds.
Step 9	<p>history hours-of-statistics-kept <i>hours</i></p> <p>Example:</p> <pre>switch(config-ip-sla-http)# history hours-of-statistics-kept 4</pre>	(Optional) Defines the number of hours to maintain for an IP SLAs operation.
Step 10	<p>history live-kept <i>lives</i></p> <p>Example:</p> <pre>switch(config-ip-sla-http)# history lives-kept 5</pre>	(Optional) Defines the number of lives to maintain for an IP SLAs operation.
Step 11	<p>owner <i>owner-id</i></p> <p>Example:</p> <pre>switch(config-ip-sla-http)# owner admin</pre>	(Optional) Configures the simple Management Network Protocol (SNMP) for an IP SLAs operation.

	Command or Action	Purpose
Step 12	history statistics-distribution-interval <i>milliseconds</i> Example: <pre>switch(config-ip-sla-http)# history statistics-distribution-interval 10</pre>	(Optional) Sets the time interval for each statistics distribution kept for an IP SLAs operation.
Step 13	tag text Example: <pre>switch(config-ip-sla-http)# tag TelnetPollServer1</pre>	(Optional) Creates a user-specified identifier for an IP SLAs operation.
Step 14	threshold <i>milliseconds</i> Example: <pre>switch(config-ip-sla-http)# threshold 10000</pre>	(Optional) Sets the upper threshold value to calculate network monitoring statistics of an IP SLAs operation.
Step 15	timeout <i>milliseconds</i> Example: <pre>switch(config-ip-sla-http)# timeout 10000</pre>	(Optional) Set the maximum response time from a request packet for an IP SLAs operation.
Step 16	tos number Example: <pre>switch(config-ip-sla-http)# tos 160</pre>	(Optional) Defines a type of service (ToS) byte in the IP header of an IP SLAs operation.
Step 17	end Example: <pre>switch(config-ip-sla-http)# end</pre>	Exits IP SLA config mode.

Scheduling IP SLAs Operations

Before you begin

- Configure all the IP Service Level Agreements (SLAs) operations before you schedule them.
- Check that the frequency of all operations in a multioperation group are the same.
- Limit the maximum number of operation ID numbers, including commas (,), in a multioperation group to 125 characters.
- Confirm the following before scheduling operations:
 - Configure any IP SLA operation before scheduling.
 - Configure the frequency of all the scheduled operations in a multioperation group to be the same.
 - The list of one or more operation ID numbers added to a multioperation group is limited to a maximum number of 125 characters in length, including commas (,).

SUMMARY STEPS

1. **configure terminal**
2. Select one of the following commands based on the number of IP SLAs operations you wish to schedule.
 - **ip sla schedule operation number** [**life** {**forever** | **seconds**}] [**start-time** { [*hh:mm:ss*] [**month day** | **day month**] **pending** | **now** | **after** [*hh:mm:ss*] }] [**ageout seconds**] [**recurring**]
 - **ip sla group schedule** *group-operation-number* *operation-id-numbers* { **schedule-period** *schedule-period-range* | **schedule-together** } [**ageout seconds**] [**frequency** *group-operation-frequency*] [**life** { **forever** }] [**start-time** { *hh:mm* [*:ss*] [**month day** | **day month**] | **pending** | **now** | **after** *hh:mm* [*:ss*] }
3. **show ip sla group schedule**
4. **show ip sla group configuration**
5. **end**

DETAILED STEPS

	Command or Action	Purpose
Step 1	configure terminal Example: <pre>switch# configure terminal switch(config)#</pre>	Enters global configuration mode.
Step 2	Select one of the following commands based on the number of IP SLAs operations you wish to schedule. <ul style="list-style-type: none"> • ip sla schedule operation number [life {forever seconds}] [start-time { [<i>hh:mm:ss</i>] [month day day month] pending now after [<i>hh:mm:ss</i>] }] [ageout seconds] [recurring] • ip sla group schedule <i>group-operation-number</i> <i>operation-id-numbers</i> { schedule-period <i>schedule-period-range</i> schedule-together } [ageout seconds] [frequency <i>group-operation-frequency</i>] [life { forever }] [start-time { <i>hh:mm</i> [<i>:ss</i>] [month day day month] pending now after <i>hh:mm</i> [<i>:ss</i>] } Example: <pre>switch (config-ip-sla-http)# ip sla schedule 10 life forever start-time now switch (config-ip-sla-http)# ip sla group schedule 10 life schedule-period frequency switch (config-ip-sla-http)# ip sla group schedule 1.3.4.6-9 life forever start-time now switch (config-ip-sla-http)# ip sla group schedule 1.3.4.6-9 schedule-period 50 frequency range 80-100</pre>	The first command configures the scheduling parameters for an individual IP SLAs operation. The second command specifies the IP SLAs operation group number and the range of operation numbers for a multioperation scheduler.
Step 3	show ip sla group schedule Example:	(Optional) Displays the IP SLAs group schedule details.

	Command or Action	Purpose
	<pre>switch(config-ip-sla-http)# show ip sla group schedule</pre>	
Step 4	show ip sla group configuration Example: <pre>switch(config-ip-sla-http)# show ip sla group configuration</pre>	(Optional) Displays the IP SLAs configuration details.
Step 5	end Example: <pre>switch(config-ip-sla-http)# end</pre>	Exits IP SLA config mode.

Troubleshooting Tips

If the IP SLAs operation is not generating statistics, configure using the `verify-data` command. This enables a check for response corruption per operation. Make sure that the IP SLAs operation is not running, otherwise the `verify-data` command generates unnecessary overhead.

Use the `debug ip sla` and `debug ip sla error` commands to help troubleshoot issues with IP SLAs operation.



CHAPTER 8

Configuring a Multioperations Scheduler

This chapter describes how to schedule multiple operations using the IP Service Level Agreements (IP SLAs) Multioperations Scheduler.

This chapter includes the following sections:

- [Information About the IP SLAs Multioperations Scheduler, on page 69](#)
- [Default Behavior of IP SLAs Multiple Operations Scheduling, on page 70](#)
- [Multiple Operations Scheduling with Scheduling Period Less Than Frequency, on page 71](#)
- [Multiple Operations Scheduling When the Number of IP SLAs Operations are Greater than the Schedule Period, on page 73](#)
- [Multiple Operations Scheduling with Scheduling Period Greater Than Frequency, on page 74](#)
- [IP SLAs Random Scheduler, on page 75](#)
- [Prerequisites for an IP SLAs Multioperation Scheduler, on page 76](#)
- [Scheduling Multiple IP SLAs Operations, on page 77](#)
- [Enabling the IP SLAs Random Scheduler, on page 78](#)
- [Verifying IP SLAs Multiple Operations Scheduling, on page 79](#)
- [Configuration Example for Scheduling Multiple IP SLAs Operations, on page 81](#)
- [Configuration Example for Enabling the IP SLAs Random Scheduler, on page 81](#)

Information About the IP SLAs Multioperations Scheduler

Normal scheduling of IP SLAs operations allows you to schedule one operation at a time. If you have large networks with thousands of IP SLAs operations to monitor network performance, normal scheduling (scheduling each operation individually) is inefficient and time-consuming.

Multiple operations scheduling allows you to schedule multiple IP SLAs operations using a single command through the command-line interface (CLI) or the CISCO-RTTMON-MIB. This feature allows you to control the amount of IP SLAs monitoring traffic by scheduling the operations to run at evenly distributed times. You must specify the operation ID numbers to be scheduled and the time range over which all the IP SLAs operations should start. This feature automatically distributes the IP SLAs operations at equal intervals over a specified time frame. The spacing between the operations (start interval) is calculated and the operations are started. This distribution of IP SLAs operations helps to minimize the CPU utilization and enhances the scalability of the network.

The IP SLAs multiple operations scheduling functionality allows you to schedule multiple IP SLAs operations as a group, using the following configuration parameters:

- Group operation number—Group configuration or group schedule number of the IP SLAs operation to be scheduled.
- Operation ID numbers—A list of IP SLAs operation ID numbers in the scheduled operation group.
- Schedule period—Amount of time for which the IP SLAs operation group is scheduled.
- Ageout—Amount of time to keep the operation in memory when it is not actively collecting information. By default, the operation remains in memory indefinitely.
- Frequency—Amount of time after which each IP SLAs operation is restarted. When the frequency option is specified, it overwrites the operation frequency of all operations that belong to the group. When the frequency option is not specified, the frequency for each operation is set to the value of the schedule period.
- Life—Amount of time in which the operation actively collects information. You can configure the operation to run indefinitely. By default, the lifetime of an operation is one hour.
- Start time—Time when the operation starts collecting information. You can specify an operation to start immediately or at an absolute start time using hours, minutes, seconds, day, and month.

The IP SLAs multiple operations scheduling functionality schedules the maximum number of operations possible without terminating. However, this functionality skips those IP SLAs operations that are already running or those operations that are not configured and therefore do not exist. The total number of operations are calculated based on the number of operations that are specified in the command, irrespective of the number of operations that are missing or already running. The IP SLAs multiple operations scheduling functionality displays a message that shows the number of active and missing operations. However, these messages are displayed only if you schedule operations that are not configured or are already running.

A main benefit for scheduling multiple IP SLAs operations is that the load on the network is reduced by distributing the operations equally over a scheduled period. This distribution helps you to achieve more consistent monitoring coverage. Consider configuring 60 operations to start during the same 1-second interval over a 60-second schedule period. If a network failure occurs 30 seconds after all 60 operations have started and the network is restored before the operations are due to start again (in another 30 seconds), this failure would never be detected by any of the 60 operations. However, if the 60 operations are distributed equally at 1-second intervals over a 60-second schedule period, then some of the operations will detect the network failure. Conversely, if a network failure occurs when all 60 operations are active, all 60 operations will fail, indicating that the failure is possibly more severe than it really is.

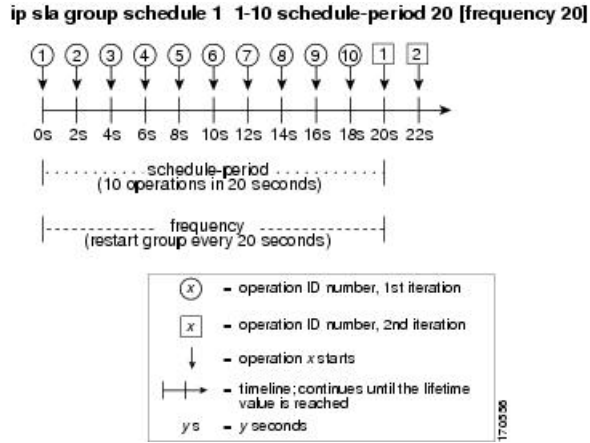
Operations of the same type and same frequency should be used for IP SLAs multiple operations scheduling. If you do not specify a frequency, the default frequency is the same as that of the schedule period. The schedule period is the period of time in which all the specified operations should run.

Default Behavior of IP SLAs Multiple Operations Scheduling

The IP SLAs Multiple Operations Scheduling feature allows you to schedule multiple IP SLAs operations as a group.

The following figure shows the scheduling of operation group 1 that includes operation 1 to operation 10. Operation group 1 has a schedule period of 20 seconds, which means that all operations in the group are started at equal intervals within a 20-second period. By default, the frequency is set to the same value as the configured schedule period. As shown in the figure, configuring the frequency is optional because 20 is the default.

Figure 3: Schedule Period Equals Frequency--Default Behavior



In this example, the first operation (operation 1) in operation group 1 starts at 0 seconds. All 10 operations in operation group 1 (operation 1 to operation 10) must be started in the schedule period of 20 seconds. The start time of each IP SLAs operation is evenly distributed over the schedule period by dividing the schedule period by the number of operations (20 seconds divided by 10 operations). Therefore, each operation starts 2 seconds after the previous operation.

The frequency is the period of time that passes before the operation group is started again (repeated). If the frequency is not specified, the frequency is set to the value of the schedule period. In the example that is shown in the figure, operation group 1 starts again every 20 seconds. This configuration provides optimal division (spacing) of operations over the specified schedule period.

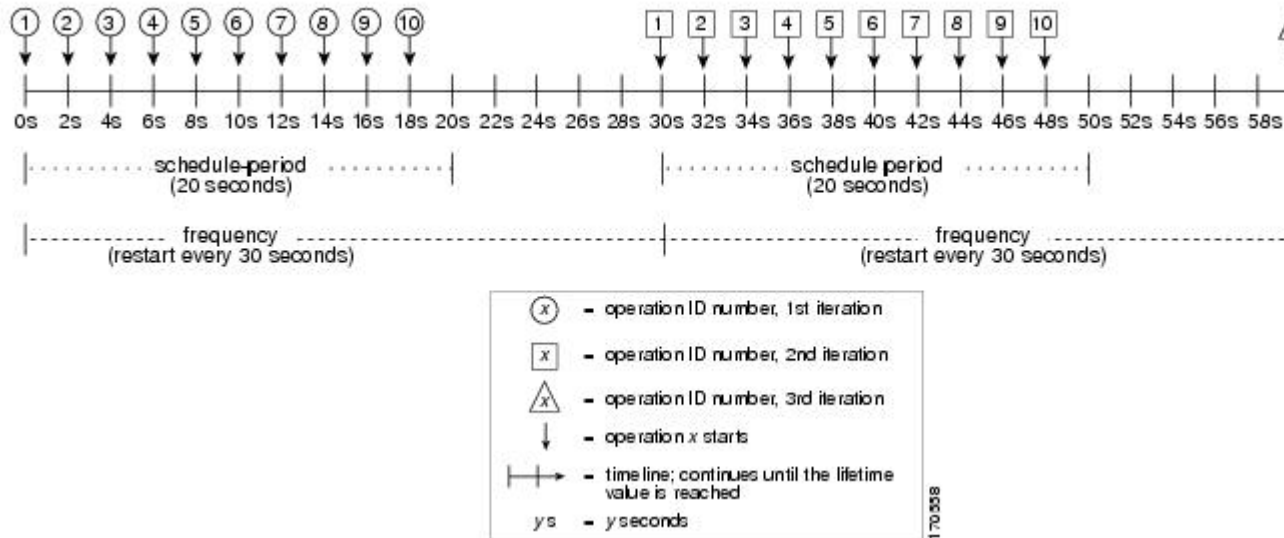
Multiple Operations Scheduling with Scheduling Period Less Than Frequency

The frequency value is the amount of time that passes before the schedule group is restarted. If the schedule period is less than the frequency, there is a period of time in which no operations are started.

The following figure shows the scheduling of operation 1 to operation 10 within operation group 2. Operation group 2 has a schedule period of 20 seconds and a frequency of 30 seconds.

Figure 4: Schedule Period is Less Than Frequency

ip sla group schedule 2 1-10 schedule-period 20 frequency 30



In this example, the first operation (operation 1) in operation group 2 starts at 0 seconds. All 10 operations in operation group 2 (operation 1 to operation 10) must be started in the schedule period of 20 seconds. The start time of each IP SLAs operation is evenly distributed over the schedule period by dividing the schedule period by the number of operations (20 seconds divided by 10 operations). Therefore, each operation starts 2 seconds after the previous operation.

In the first iteration of operation group 2, operation 1 starts at 0 seconds, and the last operation (operation 10) starts at 18 seconds. However, because the group frequency has been configured to 30 seconds, each operation in the operation group is restarted every 30 seconds. So, after 18 seconds, there is a gap of 10 seconds as no operations are started in the time from 19 to 29 seconds. At 30 seconds, the second iteration of operation group 2 starts. As all ten operations in the operation group 2 must start at an evenly distributed interval in the configured schedule period of 20 seconds, the last operation (operation 10) in the operation group 2 always starts 18 seconds after the first operation (operation 1).

As shown in the figure, the following events occur:

- At 0 seconds, the first operation (operation 1) in operation group 2 is started.
- At 18 seconds, the last operation (operation 10) in operation group 2 is started, which means that the first iteration (schedule period) of operation group 1 ends here.
- From 19 to 29 seconds, no operations are started.
- At 30 seconds, the first operation (operation 1) in operation group 2 is started again. The second iteration of operation group 2 starts here.
- At 48 seconds (18 seconds after the second iteration started), the last operation (operation 10) in operation group 2 is started, and the second iteration of operation group 2 ends.
- At 60 seconds, the third iteration of operation group 2 starts.

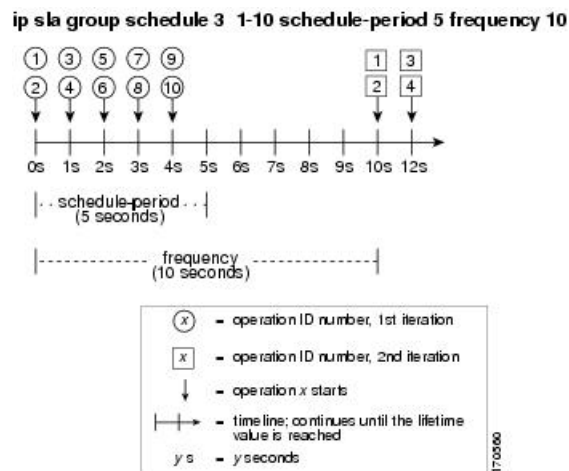
This process continues until the lifetime of operation group 2 ends. The lifetime value is configurable. The default lifetime for an operation group is forever.

Multiple Operations Scheduling When the Number of IP SLAs Operations are Greater than the Schedule Period

The minimum time interval between the start of IP SLAs operations in a group operation is 1 second. Therefore, if the number of operations to be scheduled is greater than the schedule period, the IP SLAs multiple operations scheduling functionality schedules more than one operation to start within the same 1-second interval. If the number of operations getting scheduled does not equally divide into 1-second intervals, the operations are equally divided at the start of the schedule period with the remaining operations to start at the last 1-second interval.

The following figure shows the scheduling of operation 1 to operation 10 within operation group 3. Operation group 3 has a schedule period of 5 seconds and a frequency of 10 seconds.

Figure 5: Number of IP SLAs Operations Is Greater Than the Schedule Period—Even Distribution



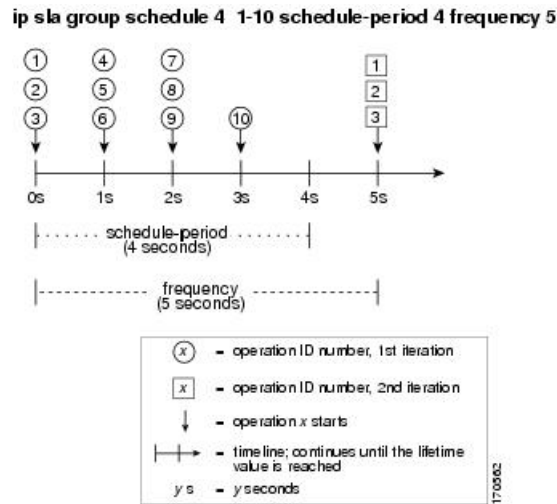
In this example, when dividing the schedule period by the number of operations (5 seconds divided by 10 operations, which equals one operation every 0.5 seconds), the start time of each IP SLAs operation is less than 1 second. Because the minimum time interval between the start of IP SLAs operations in a group operation is 1 second, the IP SLAs multiple operations scheduling functionality instead calculates how many operations it should start in each 1-second interval by dividing the number of operations by the schedule period (10 operations divided by 5 seconds). Therefore, as shown in the previous figure, two operations are started every 1 second.

As the frequency is set to 10 in this example, each iteration of operation group 3 will start 10 seconds after the start of the previous iteration. However, this distribution is not optimal as there is a gap of 5 seconds (frequency minus schedule period) between the cycles.

If the number of operations getting scheduled does not equally divide into 1-second intervals, then the operations are equally divided at the start of the schedule period with the remaining operations to start at the last 1-second interval.

The following figure shows the scheduling of operation 1 to operation 10 within operation group 4. Operation group 4 has a schedule period of 4 seconds and a frequency of 5 seconds.

Figure 6: Number of IP SLAs Operations Is Greater Than the Schedule Period—Uneven Distribution



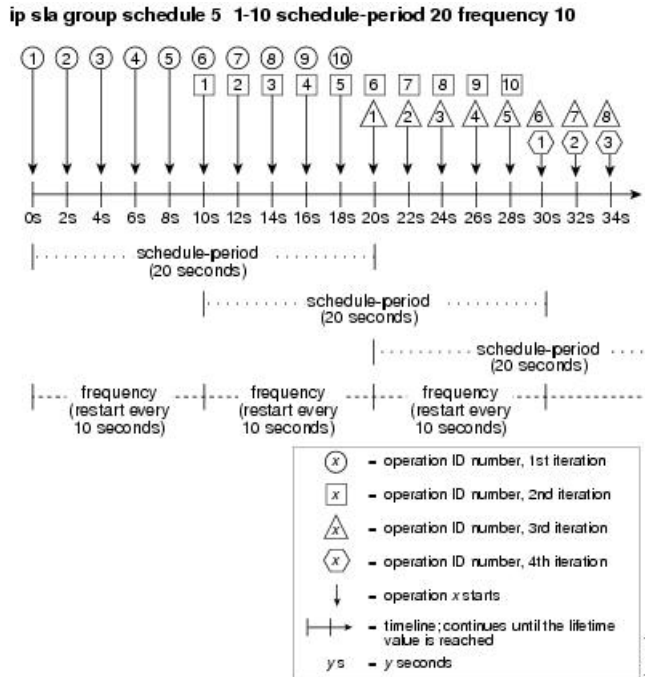
In this example, the IP SLAs multiple operations scheduling functionality calculates how many operations it should start in each 1-second interval by dividing the number of operations by the schedule period (10 operations divided by 4 seconds, which equals 2.5 operations every 1 second). Because the number of operations does not equally divide into 1-second intervals, this number is rounded off to the next whole number (see the figure) with the remaining operations to start at the last 1-second interval.

Multiple Operations Scheduling with Scheduling Period Greater Than Frequency

The value of the frequency is the amount of time that passes before the schedule group is restarted. If the schedule period is greater than the frequency, there is a period of time in which the operations in one iteration of an operation group overlaps with the operations of the following iteration.

The following figure shows the scheduling of operation 1 to operation 10 within operation group 5. Operation group 5 has a schedule period of 20 seconds and a frequency of 10 seconds.

Figure 7: IP SLAs Group Scheduling with Schedule Period Greater Than Frequency



In this example, the first operation (operation 1) in operation group 5 starts at 0 seconds. All 10 operations in operation group 5 (operation 1 to operation 10) must be started in the schedule period of 20 seconds. The start time of each IP SLAs operation is evenly distributed over the schedule period by dividing the schedule period by the number of operations (20 seconds divided by 10 operations). Therefore, each operation starts 2 seconds after the previous operation.

In the first iteration of operation group 5, operation 1 starts at 0 seconds, and operation 10, the last operation in the operation group, starts at 18 seconds. Because the operation group is configured to restart every 10 seconds (**frequency 10**), the second iteration of operation group 5 starts again at 10 seconds, before the first iteration is completed. Therefore, an overlap of operations 6 to 10 of the first iteration occurs with operations 1 to 5 of the second iteration during the time period of 10 to 18 seconds (see the previous figure). Similarly, there is an overlap of operations 6 to 10 of the second iteration with operations 1 to 5 of the third iteration during the time period of 20 to 28 seconds.

In this example, the start time of operation 1 and operation 6 does not need to be at exactly the same time, but will be within the same 2-second interval.

The configuration that is described in this section is not recommended because you can configure multiple operations to start within the same 1-second interval by configuring the number of operations greater than the schedule period.

IP SLAs Random Scheduler

The IP SLAs Multioperation Scheduler feature provides the capability to schedule multiple IP SLAs operations to begin at intervals that are equally distributed over a specified duration of time and to restart at a specified frequency. With the IP SLAs Random Scheduler feature, you can now schedule multiple IP SLAs operations to begin at random intervals that are uniformly distributed over a specified duration of time and to restart at

uniformly distributed random frequencies within a specified frequency range. Random scheduling improves the statistical metrics for assessing network performance.



Note The IP SLAs Random Scheduler feature is not in compliance with RFC 2330 because it does not account for interpacket randomness.

The random scheduler option is disabled by default. To enable the random scheduler option, you must set a frequency range when configuring a group schedule in global configuration mode. The group of operations restarts at uniformly distributed random frequencies within the specified frequency range. The following guidelines apply for setting the frequency range:

- The starting value of the frequency range should be greater than the timeout values of all the operations in the group operation.
- The starting value of the frequency range should be greater than the schedule period (amount of time for which the group operation is scheduled). This guideline ensures that the same operation does not get scheduled more than once within the schedule period.

The following guidelines apply if the random scheduler option is enabled:

- The individual operations in a group operation will be uniformly distributed to begin at random intervals over the schedule period.
- The group of operations restarts at uniformly distributed random frequencies within the specified frequency range.
- The minimum time interval between the start of each operation in a group operation is 100 milliseconds (0.1 seconds). If the random scheduler option is disabled, the minimum time interval is 1 second.
- Only one operation can be scheduled to begin at any given time. If the random scheduler option is disabled, multiple operations can begin at the same time.
- The first operation will always begins at 0 milliseconds of the schedule period.
- The order in which each operation in a group operation begins is random.

Prerequisites for an IP SLAs Multioperation Scheduler

- Configure the IP SLAs operations to be included in a group before scheduling the group.
- Determine the IP SLAs operations you want to schedule as a single group.
- Identify the network traffic type and the location of your network management station.
- Identify the topology and the types of devices in your network.
- Decide on the frequency of testing for each operation.

Scheduling Multiple IP SLAs Operations

This section describes how to schedule multiple IP SLAs operations.

Before you begin



Note

- The frequency of all operations scheduled in a multioperation group should be the same.
- The operation ID numbers are limited to a maximum of 125 characters. Do not give large integer values as operation ID numbers.

SUMMARY STEPS

1. **enable**
2. **configure terminal**
3. **ip sla group schedule** *group-operation-number operation-id-numbers schedule-period schedule-period-range* [**ageout** *seconds*] [**frequency** *group-operation-frequency*] [**life**{**forever** | *seconds*}] [**start-time** {*hh:mm[:ss]* [*monthday* | *daymonth*]} | **pending** | **now** | **after** *hh:mm:ss*}]
4. **exit**
5. **show ip sla group schedule**
6. **show ip sla configuration**

DETAILED STEPS

	Command or Action	Purpose
Step 1	enable Example: <pre>switch> enable</pre>	Enables privileged EXEC mode. Enter your password if prompted.
Step 2	configure terminal Example: <pre>switch# configure terminal</pre>	Enters global configuration mode.
Step 3	ip sla group schedule <i>group-operation-number operation-id-numbers schedule-period schedule-period-range</i> [ageout <i>seconds</i>] [frequency <i>group-operation-frequency</i>] [life { forever <i>seconds</i> }] [start-time { <i>hh:mm[:ss]</i> [<i>monthday</i> <i>daymonth</i>]} pending now after <i>hh:mm:ss</i> }] Example: <pre>switch(config)# ip sla group schedule 1 3,4,6-9</pre>	Specifies an IP SLAs operation group number and the range of operation numbers to be scheduled in global configuration mode.

	Command or Action	Purpose
Step 4	exit Example: switch(config)# exit	Returns to the privileged EXEC mode.
Step 5	show ip sla group schedule Example: switch# show ip sla group schedule	(Optional) Displays the IP SLAs group schedule details.
Step 6	show ip sla configuration Example: switch# show ip sla configuration	(Optional) Displays the IP SLAs configuration details.

Enabling the IP SLAs Random Scheduler

This section describes how to enable the IP SLAs Random Scheduler.

SUMMARY STEPS

1. **enable**
2. **configure terminal**
3. **ip sla group schedule** *group-operation-number operation-id-numbers* **schedule-period** *seconds* [**ageout** *seconds*] [**frequency** [*seconds*] **range** *random-frequency-range*] [**life**{**forever** | *seconds*}] [**start-time** {*hh:mm[:ss]* [*monthday* | *daymonth*]} | **pending** | **now** | **after***hh:mm:ss*}]
4. **exit**

DETAILED STEPS

	Command or Action	Purpose
Step 1	enable Example: switch> enable	Enables privileged EXEC mode. Enter your password if prompted.
Step 2	configure terminal Example: switch# configure terminal	Enters global configuration mode.
Step 3	ip sla group schedule <i>group-operation-number operation-id-numbers</i> schedule-period <i>seconds</i> [ageout <i>seconds</i>] [frequency [<i>seconds</i>] range	Specifies the scheduling parameters of a group of IP SLAs operations.

	Command or Action	Purpose
	<p><i>random-frequency-range</i>] [life{forever <i>seconds</i>}] [start-time{<i>hh:mm[:ss]</i> [<i>monthday</i> <i>daymonth</i>] pending now after<i>hh:mm:ss</i>}]</p> <p>Example:</p> <pre>switch(config)# ip sla group schedule 2 1-3 schedule-period 50 frequency range 80-100</pre>	To enable the random scheduler option, you must configure the frequency range <i>random-frequency-range</i> keywords and argument.
Step 4	<p>exit</p> <p>Example:</p> <pre>switch(config)# exit</pre>	Exits global configuration mode and returns to privileged EXEC mode.

Verifying IP SLAs Multiple Operations Scheduling

This section describes how to verify IP SLAs multiple operations scheduling.

SUMMARY STEPS

1. **show ip sla statistics**
2. **show ip sla group schedule**
3. **show ip sla configuration**

DETAILED STEPS

	Command or Action	Purpose
Step 1	<p>show ip sla statistics</p> <p>Example:</p> <pre>switch# show ip sla statistics</pre>	(Optional) Displays the IP SLAs operation details.
Step 2	<p>show ip sla group schedule</p> <p>Example:</p> <pre>switch# show ip sla group schedule</pre>	(Optional) Displays the IP SLAs group schedule details.
Step 3	<p>show ip sla configuration</p> <p>Example:</p> <pre>switch# show ip sla configuration</pre>	(Optional) Displays the IP SLAs configuration details.

Examples

After you schedule the multiple IP SLAs operations, you can verify the latest operation details using the appropriate **show** commands.

This example shows how to schedule IP SLAs operations 1 through 20 in the operation group 1 with a schedule period of 60 seconds and a life value of 1200 seconds. By default, the frequency is equivalent to the schedule period. In this example, the start interval is 3 seconds (schedule period divided by number of operations).

```
switch (config)# ip sla group schedule 1 1-20 schedule-period 60 life 1200
```

This example shows how to display the details of the scheduled multiple IP SLAs operation:

```
switch# show ip sla group schedule
Group Entry Number: 1
Probes to be scheduled: 1-20
Total number of probes: 20
Schedule period: 60
Group operation frequency: Equals schedule period
Status of entry (SNMP RowStatus): Active
Next Scheduled Start Time: Start Time already passed
Life (seconds): 1200
Entry Ageout (seconds): never
```

This example shows how to display the details of the scheduled multiple IP SLAs operation. The example shows that the IP SLAs operations are multiple scheduled (TRUE).

```
switch# show ip sla config 1
IP SLAs Infrastructure Engine-III
Entry number: 1
Owner:
Tag:
Operation timeout (milliseconds): 5000
Type of operation to perform: udp-jitter
Target address/Source address: 101.101.101.1/0.0.0.0
Target port/Source port: 5000/0
Type Of Service parameter: 0x0
Request size (ARR data portion): 32
Packet Interval (milliseconds)/Number of packets: 20/10
Verify data: No
Vrf Name: default
Control Packets: enabled
Schedule:
  Operation frequency (seconds): 60 (not considered if randomly scheduled)
  Next Scheduled Start Time: Start Time already passed
  Group Scheduled : TRUE
  Randomly Scheduled : FALSE
  Life (seconds): 3600
  Entry Ageout (seconds): never
  Recurring (Starting Everyday): FALSE
  Status of entry (SNMP RowStatus): Active
Threshold (milliseconds): 5000
Distribution Statistics:
  Number of statistic hours kept: 2
  Number of statistic distribution buckets kept: 1
  Statistic distribution interval (milliseconds): 20
```

This example shows how to display the latest operation start time of the scheduled multiple IP SLAs operation, when the operations are scheduled at equal intervals:

```
switch# show ip sla statistics | include Latest operation start time
Latest operation start time: *03:06:21.760 UTC Tue Oct 21 2003
Latest operation start time: *03:06:24.754 UTC Tue Oct 21 2003
Latest operation start time: *03:06:27.751 UTC Tue Oct 21 2003
Latest operation start time: *03:06:30.752 UTC Tue Oct 21 2003
Latest operation start time: *03:06:33.754 UTC Tue Oct 21 2003
Latest operation start time: *03:06:36.755 UTC Tue Oct 21 2003
Latest operation start time: *03:06:39.752 UTC Tue Oct 21 2003
Latest operation start time: *03:06:42.753 UTC Tue Oct 21 2003
Latest operation start time: *03:06:45.755 UTC Tue Oct 21 2003
Latest operation start time: *03:06:48.752 UTC Tue Oct 21 2003
Latest operation start time: *03:06:51.753 UTC Tue Oct 21 2003
Latest operation start time: *03:06:54.755 UTC Tue Oct 21 2003
Latest operation start time: *03:06:57.752 UTC Tue Oct 21 2003
Latest operation start time: *03:07:00.753 UTC Tue Oct 21 2003
Latest operation start time: *03:07:03.754 UTC Tue Oct 21 2003
Latest operation start time: *03:07:06.752 UTC Tue Oct 21 2003
Latest operation start time: *03:07:09.752 UTC Tue Oct 21 2003
Latest operation start time: *03:07:12.753 UTC Tue Oct 21 2003
Latest operation start time: *03:07:15.755 UTC Tue Oct 21 2003
Latest operation start time: *03:07:18.752 UTC Tue Oct 21 2003
```

Configuration Example for Scheduling Multiple IP SLAs Operations

This example shows how to schedule IP SLAs operations 1 to 10 in the operation group 1 with a schedule period of 20 seconds. By default, the frequency is equivalent to the schedule period.

```
switch# ip sla group schedule 1 1-10 schedule-period 20
```

This example shows how to display the scheduled multiple IP SLAs operation. The last line in the example indicates that the IP SLAs operations are multischeduled (TRUE).

```
switch# show ip sla group schedule
Multi-Scheduling Configuration:
Group Entry Number: 1
Probes to be scheduled: 1-10
Schedule period :20
Group operation frequency: 20
Multi-scheduled: TRUE
```

Configuration Example for Enabling the IP SLAs Random Scheduler

This example shows how to schedule IP SLAs operations 1 to 3 as a group (identified as group 2). In this example, the operations are scheduled to begin at uniformly distributed random intervals over a schedule period of 50 seconds. The first operation is scheduled to start immediately. The interval is chosen from the

specified range upon every invocation of the probe. The random scheduler option is enabled and the uniformly distributed random frequencies at which the group of operations will restart is chosen within the range of 80-100 seconds.

```
ip sla group schedule 2 1-3 schedule-period 50 frequency range 80-100 start-time now
```



CHAPTER 9

Configuring Proactive Threshold Monitoring for IP SLAs Operations

This chapter describes the proactive monitoring capabilities of IP Service Level Agreements (SLAs) using thresholds and reaction triggering.

This chapter includes the following sections:

- [Information About IP SLAs Reaction Configuration, on page 83](#)
- [IP SLAs Threshold Monitoring and Notifications, on page 83](#)
- [Configuring Proactive Threshold Monitoring, on page 85](#)
- [Configuration Example for an IP SLAs Reaction Configuration, on page 87](#)
- [Verification Example for an IP SLAs Reaction Configuration, on page 88](#)
- [Configuration Example for Triggering SNMP Notifications, on page 88](#)

Information About IP SLAs Reaction Configuration

IP SLAs reactions are configured to trigger when a monitored value exceeds or falls below a specified level or when a monitored event, such as a timeout or connection loss, occurs. If IP SLAs measure too high or too low of any configured reaction, IP SLAs can generate a notification to a network management application or trigger another IP SLA operation to gather more data.

IP SLAs Threshold Monitoring and Notifications

IP SLAs support proactive threshold monitoring and notifications for performance parameters such as average jitter, unidirectional latency, bidirectional round-trip time (RTT), and connectivity for most IP SLAs operations. The proactive monitoring capability also provides options for configuring reaction thresholds for important VoIP related parameters including unidirectional jitter, unidirectional packet loss, and unidirectional VoIP voice quality scoring.

Notifications for IP SLAs are configured as a triggered reaction. Packet loss, jitter, and Mean Operation Score (MOS) statistics are specific to IP SLAs jitter operations. Notifications can be generated for violations in either direction (source-to-destination and destination-to-source) or for out-of-range RTT values for packet loss and jitter. Events, such as traps, are triggered when the RTT value rises above or falls below a specified threshold.

IP SLAs can generate system logging (syslog) messages when a reaction condition occurs. System logging messages can be sent as Simple Network Management Protocol (SNMP) traps (notifications) using the CISCO-RTTMON-MIB. SNMP traps for IP SLAs are supported by the CISCO-RTTMON-MIB and CISCO-SYSLOG-MIB.

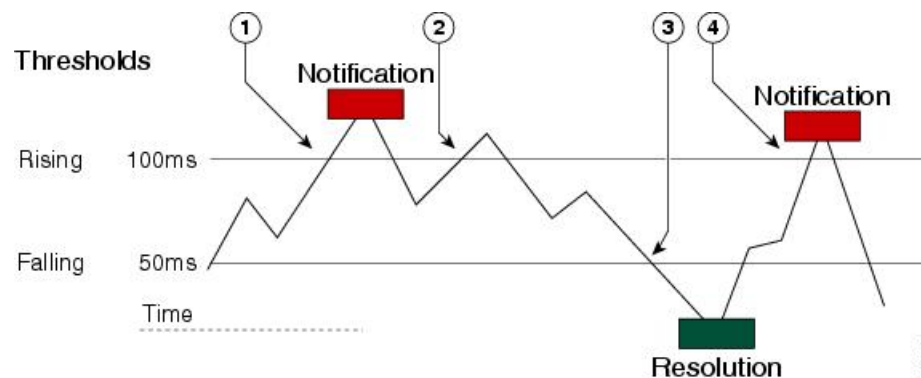
Severity levels in the CISCO-SYSLOG-MIB are SyslogSeverity INTEGER {emergency(1), alert(2), critical(3), error(4), warning(5), notice(6), info(7), debug(8)}.

The values for severity levels are defined differently for the system logging process in the Cisco NX-OS software. Severity levels for the system logging process in the Cisco NX-OS software are: {emergency (0), alert (1), critical (2), error (3), warning (4), notice (5), informational (6), debugging (7)}.

IP SLAs threshold violations are logged as level 6 (informational) within the Cisco NX-OS system logging process but are sent as level 7 (info) traps from the CISCO-SYSLOG-MIB.

Notifications are not issued for every occurrence of a threshold violation. The following figure shows the sequence for a triggered reaction that occurs when the monitored element exceeds the upper threshold. An event is sent and a notification is issued when the rising threshold is exceeded for the first time. Subsequent threshold-exceeded notifications are issued only after the monitored value falls below the falling threshold before exceeding the rising threshold again.

Figure 8: IP SLAs Triggered Reaction Condition and Notifications for Threshold Exceeded



1	An event is sent and a threshold-exceeded notification is issued when the rising threshold is exceeded for the first time.
2	Consecutive over-rising threshold violations occur without issuing additional notifications.
3	The monitored value goes below the falling threshold.
4	Another threshold-exceeded notification is issued when the rising threshold is exceeded only after the monitored value first fell below the falling threshold.



Note A lower-threshold notification is also issued the first time that the monitored element falls below the falling threshold (3). Subsequent notifications for lower-threshold violations are issued only after the rising threshold is exceeded before the monitored value falls below the falling threshold again.

RTT Reactions for Jitter Operations

RTT reactions for jitter operations are triggered only at the end of the operation and use the latest value for the return-trip time (LatestRTT), which matches the value of the average return-trip time (RTTAvg).

SNMP traps for RTT for jitter operations are based on the value of the average return-trip time (RTTAvg) for the whole operation and do not include RTT values for each individual packet sent during the operation. For example, if the average is below the threshold, up to half of the packets can actually be above the threshold, but this detail is not included in the notification because the value is for the whole operation only.

Only syslog messages are supported for RTTAvg threshold violations. Syslog messages are sent from the CISCO-RTTMON-MIB.

Configuring Proactive Threshold Monitoring

This section describes how to configure thresholds and reactive triggering for generating traps or starting another operation.

Before you begin

- Configure IP SLAs operations to be started when violation conditions are met.



Note

- RTT reactions for jitter operations are triggered only at the end of the operation and use the latest value for the return-trip time (LatestRTT).
- SNMP traps for RTT for jitter operations are based on the average value for the return-trip time (RTTAvg) for the whole operation only and do not include return-trip time values for individual packets sent during the operation. Only syslog messages are supported for RTTAvg threshold violations.
- Only syslog messages are supported for RTT violations during jitter operations.
- Only SNMP traps are supported for RTT violations during nonjitter operations.
- Only syslog messages are supported for non-RTT violations other than timeout, connectionLoss, or verifyError.
- Both SNMP traps and syslog messages are supported for timeout, connectionLoss, or verifyError violations only.

SUMMARY STEPS

1. **enable**
2. **configure terminal**
3. **ip sla reaction-configuration** *operation-number* **react** *monitored-element* [**action-type** *option*] [**threshold-type** {**average** [*number-of-measurements*] | **consecutive** [*occurrences*] | **immediate** | **never** | **xofy** [*x-value* *y-value*]}] [**threshold-value** *upper-threshold* *lower-threshold*]
4. **ip sla reaction-trigger** *operation-number* *target-operation*
5. **ip sla logging traps**
6. **snmp-server enable traps ip sla**

7. **snmp-server host** {hostname | ip-address} [vrf vrf-name] [traps | informs] [version {1 | 2c | 3} [auth | noauth | priv]] community-string [udp-port port] [notification-type]
8. **exit**
9. **show ip sla reaction configuration** [operation-number]
10. **show ip sla reaction trigger** [operation-number]

DETAILED STEPS

	Command or Action	Purpose
Step 1	enable Example: switch> enable	Enables privileged EXEC mode. Enter your password if prompted.
Step 2	configure terminal Example: switch# configure terminal	Enters global configuration mode.
Step 3	ip sla reaction-configuration operation-number react monitored-element [action-type option] [threshold-type {average [number-of-measurements] consecutive [occurrences] immediate never xofy [x-value y-value]}] [threshold-value upper-threshold lower-threshold] Example: switch(config)# ip sla reaction-configuration 10 react jitterAvg threshold-type immediate threshold-value 5000 3000 action-type trapAndTrigger	Configures the action (SNMP trap or IP SLAs trigger) that is to occur based on violations of specified thresholds.
Step 4	ip sla reaction-trigger operation-number target-operation Example: switch(config)# ip sla reaction-trigger 10 2	(Optional) Starts another IP SLAs operation when the violation conditions are met. Required only if the ip sla reaction-configuration command is configured with either the trapAndTrigger or triggerOnly keyword.
Step 5	ip sla logging traps Example: switch(config)# ip sla logging traps	(Optional) Enables IP SLAs syslog messages from CISCO-RTTMON-MIB.
Step 6	snmp-server enable traps ip sla Example: switch(config)# snmp-server enable traps ip sla	(Optional) Enables system to generate CISCO-RTTMON-MIB traps.
Step 7	snmp-server host {hostname ip-address} [vrf vrf-name] [traps informs] [version {1 2c 3} [auth noauth priv]] community-string [udp-port port] [notification-type] Example:	(Optional) Sends traps to a remote host. Required if the snmp-server enable traps command is configured.

	Command or Action	Purpose
	<code>switch(config)# snmp-server host 10.1.1.1 public</code>	
Step 8	exit Example: <code>switch(config)# exit</code>	Exits global configuration mode and returns to privileged EXEC mode.
Step 9	show ip sla reaction configuration [<i>operation-number</i>] Example: <code>switch# show ip sla reaction configuration 10</code>	(Optional) Displays the configuration of proactive threshold monitoring.
Step 10	show ip sla reaction trigger [<i>operation-number</i>] Example: <code>switch# show ip sla reaction trigger 2</code>	(Optional) Displays the configuration status and operational state of target operations to be triggered.

Configuration Example for an IP SLAs Reaction Configuration

This example shows how to configure IP SLAs operation 10 to send an SNMP logging trap when the MOS value either exceeds 4.9 (best quality) or falls below 2.5 (poor quality):

```
switch(config)# ip sla reaction-configuration 10 react mos threshold-type immediate
threshold-value 490 250 action-type trapOnly
```

This example shows how to display the default configuration:

```
switch# show ip sla reaction-configuration 1
Entry number: 1
Index: 1
Reaction: mos
Threshold Type: Immediate
Rising: 490
Falling: 250
Action Type: Trap only
switch# configure terminal
Enter configuration commands, one per line. End with CNTL/Z.
switch(config)# ip sla reaction-configuration 10 react mos threshold-type immediate
threshold-value 490 250 action-type trapOnly
switch(config)# show ip sla reaction-configuration 1
Entry number: 1
Reaction: rtt
Threshold Type: Never
Rising (milliseconds): 5000
Falling (milliseconds): 3000
Threshold Count: 5
Threshold Count2: 5
Action Type: None
```

Verification Example for an IP SLAs Reaction Configuration

This example shows that multiple monitored elements are configured for the IP SLAs operation (1), as indicated by the values of Reaction: in the output:

```
switch# show ip sla reaction-configuration

Entry Number: 1
Reaction: RTT
Threshold type: Never
Rising (milliseconds): 5000
Falling (milliseconds): 3000
Threshold Count: 5
Threshold Count2: 5
Action Type: None
Reaction: jitterDSAvg
Threshold type: average
Rising (milliseconds): 5
Falling (milliseconds): 3
Threshold Count: 5
Threshold Count2: 5
Action Type: triggerOnly
Reaction: jitterDSAvg
Threshold type: immediate
Rising (milliseconds): 5
Falling (milliseconds): 3
Threshold Count: 5
Threshold Count2: 5
Action Type: trapOnly
Reaction: PacketLossSD
Threshold type: immediate
Rising (milliseconds): 5
Threshold Falling (milliseconds): 3
Threshold Count: 5
Threshold Count2: 5
Action Type: trapOnly
```

Configuration Example for Triggering SNMP Notifications

This example shows how to configure proactive threshold monitoring so that CISCO-SYSLOG-MIB traps are sent to the remote host at 10.1.1.1 if the threshold values for RTT or VoIP MOS are violated:

```
! Configure the operation on source.
switch(config)# ip sla 1

switch(config-ip-sla)# udp-jitter 10.1.1.1 3000 codec g711alaw
switch(config-ip-sla-jitter)# exit

switch(config)# ip sla schedule 1 start now life forever

! Configure thresholds and reactions.
switch(config)# ip sla reaction-configuration 1 react rtt threshold-type immediate
threshold-value 3000 2000 action-type trapOnly

switch(config)# ip sla reaction-configuration 1 react MOS threshold-type consecutive 4
threshold-value 390 220 action-type trapOnly
```

```
switch(config)# ip sla logging traps
```

! The following command sends traps to the specified remote host.

```
switch(config)# snmp-server host 10.1.1.1 version 2c public
```

! The following command is needed for the system to generate CISCO-SYSLOG-MIB traps.

```
switch(config)# snmp-server enable traps
```

This example shows that IP SLAs threshold violation notifications are generated as level 6 (informational) in the Cisco NX-OS system logging process:

```
3d18h:%RTT-6-SAATHRESHOLD:RTR(11):Threshold exceeded for MOS
```

This example shows an SNMP notification from the CISCO-SYSLOG-MIB for the same violation is a level 7 (info) notification:

```
3d18h:SNMP:V2 Trap, reqid 2, errstat 0, erridx 0
sysUpTime.0 = 32613038
snmpTrapOID.0 = ciscoSyslogMIB.2.0.1
clogHistoryEntry.2.71 = RTT
clogHistoryEntry.3.71 = 7
clogHistoryEntry.4.71 = SAATHRESHOLD
clogHistoryEntry.5.71 = RTR(11):Threshold exceeded for MOS
clogHistoryEntry.6.71 = 32613037
```




CHAPTER 10

Configuring IP SLA PBR Object Tracking

This chapter describes the PBR object tracking capabilities of IP Service Level Agreements (SLAs).

This chapter includes the following sections:

- [IP SLA PBR Object Tracking, on page 91](#)
- [Configuring IP SLA PBR Object Tracking, on page 92](#)
- [Example: Configuring IP SLA PBR Object Tracking, on page 95](#)

IP SLA PBR Object Tracking

This feature allows you to make sure that the next hop is reachable before that route is used. If the next hop is not reachable, another route is used as defined in the policy-based routing (PBR) configuration. If no other route is present in the route map, the routing table is used.

Object Tracking

Object tracking monitors objects such as the following:

- State of the line protocol of an interface
- Existence of an entry in the routing table

Clients, such as PBR, can register their interest in specific, tracked objects and then take action when the state of the objects changes.

IP SLA PBR Object Tracking Overview

The PBR Object Tracking feature gives policy-based routing (PBR) access to all the objects that are available through the tracking process. The tracking process enables you to track individual objects—such as ICMP ping reachability, routing adjacency, an application running on a remote device, a route in the Routing Information Base (RIB)—or to track the state of an interface line protocol.

Object tracking functions in the following manner: PBR informs the tracking process that a certain object should be tracked, and the tracking process then notifies PBR when the state of that object changes.

Configuring IP SLA PBR Object Tracking

SUMMARY STEPS

1. **configure terminal**
2. **ip sla** *operation-number*
3. **icmp-echo** *destination-ip-address*
4. **exit**
5. **ip sla schedule** *operation-number* **life forever start-time now**
6. **track** *object-number* **ip sla** *entry-number* **reachability**
7. **exit**
8. **ip access-list standard** *access-list-name*
9. **permit ip** *source destination*
10. **ipv6 access-list** *access-list-name*
11. **permit ipv6** *source destination*
12. **exit**
13. **route-map** *map-tag*
14. **match ip address** *access-list-name*
15. **match ipv6 address** *access-list-name*
16. **set ip next-hop verify-availability** *next-hop-address* **track** *object*
17. **set ipv6 next-hop verify-availability** *next-hop-address* **track** *object*
18. **exit**
19. **interface** *type number*
20. **ip address** *ip-address mask*
21. **ipv6 address** *ip-address mask*
22. **ip policy route-map** *map-tag*
23. **ipv6 policy route-map** *map-tag*
24. **end**
25. **show track** *object-number*
26. **show route-map** *map-name*

DETAILED STEPS

	Command or Action	Purpose
Step 1	configure terminal Example: <pre>switch# configure terminal</pre>	Enters global configuration mode.
Step 2	ip sla <i>operation-number</i> Example: <pre>switch(config)# ip sla 1</pre>	Starts a Cisco IOS IP Service Level Agreement (SLA) operation configuration and enters IP SLA configuration mode.

	Command or Action	Purpose
Step 3	icmp-echo <i>destination-ip-address</i> Example: switch(config-ip-sla)# icmp-echo 10.3.3.2	Configures an IP SLA Internet Control Message Protocol (ICMP) echo probe operation.
Step 4	exit Example: switch(config-ip-sla)# exit	Exits IP SLA configuration mode and returns the router to global configuration mode.
Step 5	ip sla schedule <i>operation-number</i> life forever start-time now Example: switch(config)# ip sla schedule 1 life forever start-time now	Configures the scheduling parameters for a single Cisco IOS IP SLA operation. <ul style="list-style-type: none"> In this example, the time parameters for the IP SLA operation are configured. Note Repeat Steps 2 to 5 to configure and schedule other IP SLA operations.
Step 6	track <i>object-number</i> ip sla <i>entry-number</i> reachability Example: switch(config)# track 1 ip sla 1 reachability	Tracks the reachability of an object and enters tracking configuration mode. Note Repeat this step to track other operations.
Step 7	exit Example: switch(config-track)# exit	Exits tracking configuration mode and returns the router to global configuration mode.
Step 8	ip access-list standard <i>access-list-name</i> Example: switch(config)# ip access-list standard ACL	Defines an IP access list and an access control list (ACL) in order to enable filtering for packets.
Step 9	permit ip <i>source destination</i> Example: switch(config-acl)# permit ip 192.0.2.0/24 198.51.100.0/24	Creates an access control list (ACL) rule that permits traffic matching its conditions.
Step 10	ipv6 access-list <i>access-list-name</i> Example: switch(config)# ipv6 access-list IPv6ACL	Defines an IPv6 access list ACL in order to enable filtering for packets.
Step 11	permit ipv6 <i>source destination</i> Example:	Creates an access control list (ACL) rule that permits traffic matching its conditions.

	Command or Action	Purpose
	<pre>switch(config-ipv6-acl)# permit ipv6 2001:DB8::/32 2001:DB8::/48</pre>	
Step 12	<p>exit</p> <p>Example:</p> <pre>switch(config-ipv6-acl)# exit</pre>	Exits ACL configuration mode and returns the router to global configuration mode.
Step 13	<p>route-map <i>map-tag</i></p> <p>Example:</p> <pre>switch(config)# route-map PBR</pre>	Specifies a route map and enters route-map configuration mode.
Step 14	<p>match ip address <i>access-list-name</i></p> <p>Example:</p> <pre>switch(config-route-map)# match ip address ACL</pre>	Distributes any routes that have a destination IPv4 network number address that is permitted by a standard access list.
Step 15	<p>match ipv6 address <i>access-list-name</i></p> <p>Example:</p> <pre>switch(config-route-map)# match ipv6 address IPv6ACL</pre>	Distributes any routes that have a destination IPv6 network number address that is permitted by a standard access list.
Step 16	<p>set ip next-hop verify-availability <i>next-hop-address</i> track <i>object</i></p> <p>Example:</p> <pre>switch(config-route-map)# set ip next-hop verify-availability 198.51.100.2 track 1</pre>	Configures the route map to verify the reachability of the tracked object. Note Repeat this step to configure the route map to verify the reachability of other tracked objects.
Step 17	<p>set ipv6 next-hop verify-availability <i>next-hop-address</i> track <i>object</i></p> <p>Example:</p> <pre>switch(config-route-map)# set ipv6 next-hop verify-availability 2001:DB8:1::1 track 1</pre>	Configures the route map to verify the reachability of the tracked object. Note Repeat this step to configure the route map to verify the reachability of other tracked objects.
Step 18	<p>exit</p> <p>Example:</p> <pre>switch(config-route-map)# exit</pre>	Exits route-map configuration mode and returns the router to global configuration mode.
Step 19	<p>interface <i>type number</i></p> <p>Example:</p> <pre>switch(config)# interface ethernet 0/0</pre>	Specifies an interface type and number and enters interface configuration mode.

	Command or Action	Purpose
Step 20	ip address <i>ip-address mask</i> Example: <pre>switch(config-if)# ip address 10.2.2.1 255.255.255.0</pre>	Specifies a primary IP address for an interface.
Step 21	ipv6 address <i>ip-address mask</i> Example: <pre>switch(config-if)# ipv6 address 2001:DB8::/48</pre>	Specifies a primary IPv6 address for an interface.
Step 22	ip policy route-map <i>map-tag</i> Example: <pre>switch(config-if)# ip policy route-map PBR</pre>	Enables policy routing and identifies a route map to be used for policy routing.
Step 23	ipv6 policy route-map <i>map-tag</i> Example: <pre>switch(config-if)# ipv6 policy route-map PBR</pre>	Enables IPv6 policy routing and identifies a route map to be used for policy routing.
Step 24	end Example: <pre>switch(config-if)# end</pre>	Exits interface configuration mode and returns the router to privileged EXEC mode.
Step 25	show track <i>object-number</i> Example: <pre>switch# show track 1</pre>	(Optional) Displays tracking information. Use this command to verify the configuration.
Step 26	show route-map <i>map-name</i> Example: <pre>switch# show route-map PBR</pre>	(Optional) Displays route map information.

Example: Configuring IP SLA PBR Object Tracking

This example shows that object tracking is configured for PBR:

```
! Configure and schedule IP SLA operations
ip sla 1
  icmp-echo 10.3.3.2
ip sla schedule 1 life forever start-time now
!
ip sla 2
  udp-echo 10.4.4.2
```

Example: Configuring IP SLA PBR Object Tracking

```
ip sla schedule 2 life forever start-time now
!
ip sla 3
  icmp-echo 10.5.5.2
ip sla schedule 3 life forever start-time now
!
ip sla 4
  icmp-echo 10.6.6.2
ip sla schedule 4 life forever start-time now
!
ip sla 5
  icmp-echo 10.7.7.2
ip sla schedule 5 life forever start-time now
!
! Configure Object Tracking to track the operations
!
track 1 ip sla 1 reachability
track 2 ip sla 2 reachability
track 3 ip sla 3 reachability
track 4 ip sla 4 reachability
track 5 ip sla 5 reachability
!
! Configure ACL
ip access-list standard ACL
  permit ip 10.2.2.0/24 10.1.1.1/32
!
! Configure PBR policing on the router
route-map PBR
  match ip address ACL
  set ip next-hop verify-availability 10.3.3.2 track 1
  set ip next-hop verify-availability 10.4.4.2 track 2
  set ip next-hop verify-availability 10.5.5.2 track 3
!
! Apply PBR policy on the incoming interface of the router.
interface ethernet 0/0
  ip address 10.2.2.1 255.255.255.0
  ip policy route-map PBR
!
! Display PBR related information
show route-map
show track brief
show ip sla stat
show ip sla application
!
```



CHAPTER 11

Configuring IP SLAs DNS Operations

This chapter describes the DNS operations capabilities of IP Service Level Agreements (SLAs).

This chapter includes the following sections:

- [IP SLAs DNS Operations, on page 97](#)
- [Configuring a Basic DNS Operation on the Source Device, on page 98](#)
- [Configuring a DNS Operation with Optional Parameters on the Source Device, on page 99](#)
- [Scheduling IP SLAs Operations, on page 102](#)
- [Configuration Example for a DNS Operation, on page 103](#)
- [Configuration Example for a Basic DNS Operation on the Source Device, on page 103](#)
- [Configuration Example for a DNS Operation with Optional Parameters on the Source Device, on page 104](#)
- [Configuration Example for Scheduling IP SLAs Operations, on page 104](#)

IP SLAs DNS Operations

This section describes how to configure the IP SLAs DNS operations to measure the difference between the time that is taken to send a DNS request and receive a reply.

Guidelines and Limitations for IP SLA DNS Operations

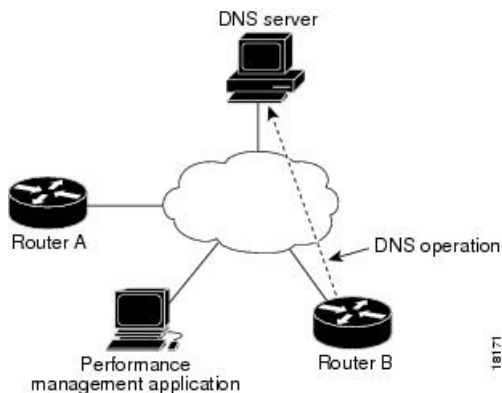
- **show** commands with the **internal** keyword are not supported.
- IPv6 is not supported for IP SLA DNS operations.

DNS Operation

The DNS operation measures the difference between the time that is taken to send a DNS request and receive a reply. DNS is used in the Internet for translating names of network nodes into addresses. The IP SLAs DNS operation queries for an IP address if you specify a hostname or queries for a hostname if you specify an IP address.

In the following figure, Device B is configured as the source IP SLAs device and a DNS operation is configured with the DNS server as the destination device.

Figure 9: DNS Operation



The connection response time is computed by measuring the difference between the time that is taken to send a request to the DNS server and the time a reply is received by Device B. The resulting DNS lookup time can help you analyze your DNS performance. Faster DNS lookup times translate to a faster web server access experience.

Configuring a Basic DNS Operation on the Source Device

SUMMARY STEPS

1. **configure terminal**
2. **feature sla sender**
3. **ip sla operation-number**
4. **dns** {destination-ip-address | destination-hostname} **name-server** ip-address [source-ip {ip-address | hostname} **source-port** port-number]
5. **frequency seconds**
6. **end**

DETAILED STEPS

	Command or Action	Purpose
Step 1	configure terminal Example: <pre>switch# configure terminal</pre>	Enters global configuration mode.
Step 2	feature sla sender Example: <pre>switch(config)# feature sla sender</pre>	Enables the IP SLAs operation feature.
Step 3	ip sla operation-number Example:	Begins configuration for an IP SLAs operation and enters IP SLA configuration mode.

	Command or Action	Purpose
	<code>switch(config)# ip sla 10</code>	
Step 4	<p>dns {<i>destination-ip-address</i> <i>destination-hostname</i>} name-server <i>ip-address</i> [source-ip {<i>ip-address</i> <i>hostname</i>} source-port <i>port-number</i>]</p> <p>Example:</p> <pre>switch(config-ip-sla)# dns host1 name-server 172.20.2.132</pre>	Defines a DNS operation and enters IP SLA DNS configuration mode.
Step 5	<p>frequency <i>seconds</i></p> <p>Example:</p> <pre>switch(config-ip-sla-dns)# frequency 60</pre>	(Optional) Sets the rate at which a specified IP SLAs operation repeats.
Step 6	<p>end</p> <p>Example:</p> <pre>switch(config-ip-sla-dns)# end</pre>	Exits to privileged EXEC mode.

Configuring a DNS Operation with Optional Parameters on the Source Device

SUMMARY STEPS

1. **configure terminal**
2. **feature sla sender**
3. **ip sla** *operation-number*
4. **dns** {*destination-ip-address* | *destination-hostname*} **name-server** *ip-address* [**source-ip** {*ip-address* | *hostname*} **source-port** *port-number*]
5. **history buckets-kept** *size*
6. **history distributions-of-statistics-kept** *size*
7. **history filter** {*none* | *all* | *overThreshold* | *failures*}
8. **frequency** *seconds*
9. **history hours-of-statistics-kept** *hours*
10. **history lives-kept** *lives*
11. **owner** *owner-id*
12. **history statistics-distribution-interval** *milliseconds*
13. **tag** *text*
14. **threshold** *milliseconds*
15. **timeout** *milliseconds*
16. **end**

DETAILED STEPS

	Command or Action	Purpose
Step 1	configure terminal Example: switch# configure terminal	Enters global configuration mode.
Step 2	feature sla sender Example: switch(config)# feature sla sender	Enables the IP SLAs operation feature.
Step 3	ip sla operation-number Example: switch(config)# ip sla 10	Begins configuration for an IP SLAs operation and enters IP SLA configuration mode.
Step 4	dns {destination-ip-address destination-hostname} name-server ip-address [source-ip {ip-address hostname} source-port port-number] Example: switch(config-ip-sla)# dns host1 name-server 172.20.2.132	Defines a DNS operation and enters IP SLA DNS configuration mode.
Step 5	history buckets-kept size Example: switch(config-ip-sla-dns)# history buckets-kept 25	(Optional) Sets the number of history buckets that are kept during the lifetime of an IP SLAs operation.
Step 6	history distributions-of-statistics-kept size Example: switch(config-ip-sla-dns)# history distributions-of-statistics-kept 5	(Optional) Sets the number of statistics distributions kept per hop during an IP SLAs operation.
Step 7	history filter {none all overThreshold failures} Example: switch(config-ip-sla-dns)# history filter failures	(Optional) Defines the type of information that is kept in the history table for an IP SLAs operation.
Step 8	frequency seconds Example: switch(config-ip-sla-dns)# frequency 30	(Optional) Sets the rate at which a specified IP SLAs operation repeats.
Step 9	history hours-of-statistics-kept hours Example:	(Optional) Sets the number of hours for which statistics are maintained for an IP SLAs operation.

	Command or Action	Purpose
	<pre>switch(config-ip-sla-dns)# history hours-of-statistics-kept 4</pre>	
Step 10	history lives-kept <i>lives</i> Example: <pre>switch(config-ip-sla-dns)# history lives-kept 2</pre>	(Optional) Sets the number of lives that are maintained in the history table for an IP SLAs operation.
Step 11	owner <i>owner-id</i> Example: <pre>switch(config-ip-sla-dns)# owner admin</pre>	(Optional) Configures the Simple Network Management Protocol (SNMP) owner of an IP SLAs operation.
Step 12	history statistics-distribution-interval <i>milliseconds</i> Example: <pre>switch(config-ip-sla-dns)# history statistics-distribution-interval 10</pre>	(Optional) Sets the time interval for each statistics distribution kept for an IP SLAs operation.
Step 13	tag <i>text</i> Example: <pre>switch(config-ip-sla-dns)# tag TelnetPollServer1</pre>	(Optional) Creates a user-specified identifier for an IP SLAs operation.
Step 14	threshold <i>milliseconds</i> Example: <pre>switch(config-ip-sla-dns)# threshold 9000</pre>	(Optional) Sets the upper threshold value for calculating network monitoring statistics that are created by an IP SLAs operation.
Step 15	timeout <i>milliseconds</i> Example: <pre>switch(config-ip-sla-dns)# timeout 10000</pre>	(Optional) Sets the amount of time an IP SLAs operation waits for a response from its request packet.
Step 16	end Example: <pre>switch(config-ip-sla-dns)# end</pre>	Exits to privileged EXEC mode.

Scheduling IP SLAs Operations



Note

- All IP SLAs operations that you want to be scheduled must be already configured.
- The frequency of all operations that are scheduled in a multioperation group must be the same.
- The list of one or more operation ID numbers to be added to a multioperation group is limited to a maximum of 125 characters in length, including commas (,).

SUMMARY STEPS

1. **configure terminal**
2. Use one of the following.
 - **ip sla schedule** *operation-number* [**life** {**forever** | *seconds*}] [**start-time** {[*hh:mm:ss*] [*month day* | *day month*]} | **pending** | **now** | **after** *hh:mm:ss*] [**ageout** *seconds*] [**recurring**]
 - **ip sla group schedule** *group-operation-number operation-id-numbers* {**schedule-period** *schedule-period-range* | **schedule-together**} [**ageout** *seconds*] [**frequency** *group-operation-frequency*] [**life** {**forever** | *seconds*}] [**start-time** {*hh:mm[:ss]* [*month day* | *day month*]} | **pending** | **now** | **after** *hh:mm[:ss]*}]
3. **exit**
4. **show ip sla group schedule**
5. **show ip sla configuration**

DETAILED STEPS

	Command or Action	Purpose
Step 1	configure terminal Example: <pre>switch# configure terminal</pre>	Enters global configuration mode.
Step 2	Use one of the following. <ul style="list-style-type: none"> • ip sla schedule <i>operation-number</i> [life {forever <i>seconds</i>}] [start-time {[<i>hh:mm:ss</i>] [<i>month day</i> <i>day month</i>]} pending now after <i>hh:mm:ss</i>] [ageout <i>seconds</i>] [recurring] • ip sla group schedule <i>group-operation-number operation-id-numbers</i> {schedule-period <i>schedule-period-range</i> schedule-together} [ageout <i>seconds</i>] [frequency <i>group-operation-frequency</i>] [life {forever <i>seconds</i>}] [start-time {<i>hh:mm[:ss]</i> [<i>month day</i> <i>day month</i>]} pending now after <i>hh:mm[:ss]</i>}] Example:	Configures the scheduling parameters for an individual IP SLAs operation. Specifies an IP SLAs operation group number and the range of operation numbers for a multioperation scheduler.

	Command or Action	Purpose
	<pre>switch(config)# ip sla schedule 10 life forever start-time now</pre> <p>Example:</p> <pre>switch(config)# ip sla group schedule 1 3,4,6-9 life forever start-time now</pre>	
Step 3	<p>exit</p> <p>Example:</p> <pre>switch(config)# exit</pre>	Exits to privileged EXEC mode.
Step 4	<p>show ip sla group schedule</p> <p>Example:</p> <pre>switch# show ip sla group schedule</pre>	(Optional) Displays IP SLAs group schedule details.
Step 5	<p>show ip sla configuration</p> <p>Example:</p> <pre>switch# show ip sla configuration</pre>	(Optional) Displays IP SLAs configuration details.

Configuration Example for a DNS Operation

This example shows how to configure a DNS operation from Device B to the DNS server (IP address 172.20.2.132) as shown in the “DNS Operation” figure in the “DNS Operation” section. The operation is scheduled to start immediately. In this example, the target address is a hostname and the DNS operation will query the DNS server for the IP address associated with the hostname host1. No configuration is required at the DNS server.

```
feature sla sender
ip sla 11
  dns host1 name-server 172.20.2.132
  frequency 50
  timeout 8000
  tag DNS-Test
ip sla schedule 11 start-time now
```

Configuration Example for a Basic DNS Operation on the Source Device

This example shows how to configure a basic DNS operation on the source device:

```
switch# configure terminal
switch(config)# feature sla sender
```

```
switch(config)# ip sla 10
switch(config-ip-sla)# dns host1 name-server 172.20.2.132
switch(config-ip-sla-dns)# frequency 60
switch(config-ip-sla-dns)# end
```

Configuration Example for a DNS Operation with Optional Parameters on the Source Device

This example shows how to configure a DNS operation with optimal parameters on the source device:

```
switch# configure terminal
switch(config)# feature sla sender
switch(config-ip-sla)# dns host1 name-server 172.20.2.132
switch(config)# ip sla 10
switch(config-ip-sla)# dns host1 name-server 172.20.2.132
switch(config-ip-sla-dns)# history buckets-kept 25
switch(config-ip-sla-dns)# history distributions-of-statistics-kept 5
switch(config-ip-sla-dns)# history filter failures
switch(config-ip-sla-dns)# frequency 30
switch(config-ip-sla-dns)# history hours-of-statistics-kept 4
switch(config-ip-sla-dns)# history lives-kept 2
switch(config-ip-sla-dns)# owner admin
switch(config-ip-sla-dns)# history statistics-distribution-interval 10
switch(config-ip-sla-dns)# tag TelnetPollServer1
switch(config-ip-sla-dns)# threshold 9000
switch(config-ip-sla-dns)# timeout 10000
switch(config-ip-sla-dns)# end
```

Configuration Example for Scheduling IP SLAs Operations

This example shows how to schedule IP SLAs operations:

```
switch# configure terminal
switch(config)# feature sla sender
switch(config)# ip sla schedule 10 life forever start-time now
switch(config)# exit
switch# show ip sla group schedule
switch# show ip sla configuration
```



CHAPTER 12

Configuring IP SLAs ICMP Echo Operations

This module describes how to configure an IP Service Level Agreements (SLAs) Internet Control Message Protocol (ICMP) Echo operation to monitor end-to-end response time between two devices using IPv4.

This chapter includes the following sections:

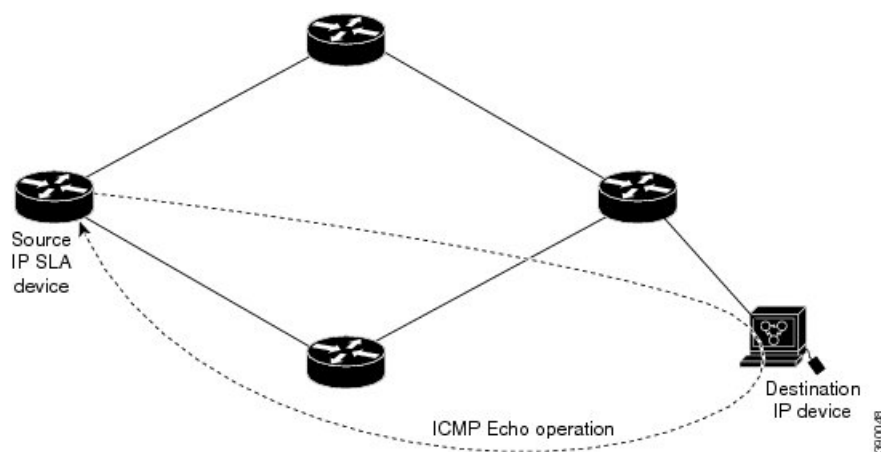
- [ICMP Echo Operation, on page 105](#)
- [Configuring an ICMP Echo Operation, on page 106](#)
- [Configuration Examples for IP SLAs ICMP Echo Operations, on page 113](#)

ICMP Echo Operation

The Internet Control Message Protocol (ICMP) Echo operation measures the end-to-end response time between two devices that use IPv4 or IPv6. The response time is computed by measuring the time taken between sending an ICMP Echo request message to the destination and receiving an ICMP Echo reply. An ICMP Echo is useful for troubleshooting network connectivity issues. The results of the ICMP Echo operation can be displayed and analyzed to determine how the network IP connections are performing.

In the following figure, the ICMP Echo operation uses the ping test to measure the response time between the source IP SLAs device and the destination IP device. Many customers use IP SLAs ICMP-based operations, in-house ping testing, or ping-based dedicated probes for response time measurements.

Figure 10: ICMP Echo Operation



The IP SLAs ICMP Echo operation conforms to the same IETF specifications for ICMP ping testing and the two methods result in the same response times.

Guidelines and Limitations for IP SLAs ICMP Echo Operations

- **show** commands with the **internal** keyword are not supported.
- We recommend that you use a Cisco networking device as the destination device although you can use any networking device that supports RFC 862, the Echo protocol.
- You need to configure an IP SLA operation and schedule it for it to begin the operation.
- Beginning with Cisco NX-OS Release 7.0(3)I6(1), IPv6 for Cisco Nexus 9300 and 9500 switches.

Configuring an ICMP Echo Operation



Note You do not need to configure an IP SLAs Responder on the destination device.

Perform one of the following tasks:

- Configuring a basic ICMP Echo operation on the source device
- Configuring an ICMP Echo operation with optional parameters

Configuring a Basic ICMP Echo Operation on a Source Device

SUMMARY STEPS

1. **configure terminal**
2. **feature sla sender**
3. **ip sla operation-number**
4. **icmp-echo** {*destination-ipv4-address* | *destination-ipv6-address* | *destination-hostname*} [**source-ip** {*ipv4-address* | *ipv6-address* | *hostname*} | **source-interface** *interface-name*]
5. **end**

DETAILED STEPS

	Command or Action	Purpose
Step 1	configure terminal Example: switch# configure terminal	Enters global configuration mode.
Step 2	feature sla sender Example: switch(config)# feature sla sender	Enables the IP SLAs operation feature.

	Command or Action	Purpose
Step 3	ip sla operation-number Example: <pre>switch(config)# ip sla 6</pre>	Begins configuration for an IP SLAs operation and enters IP SLA configuration mode.
Step 4	icmp-echo { <i>destination-ipv4-address</i> <i>destination-ipv6-address</i> <i>destination-hostname</i> } [source-ip { <i>ipv4-address</i> <i>ipv6-address</i> <i>hostname</i> } source-interface interface-name] Example: <pre>switch(config-ip-sla)# icmp-echo 192.0.2.134</pre> Example: <pre>switch(config-ip-sla)# icmp-echo 2016:1:1::2</pre>	Defines an ICMP Echo operation and enters IP SLA ICMP Echo configuration mode. Note IPv6 is supported for Cisco Nexus 9300 and 9500 switches beginning with Cisco NX-OS Release 7.0(3)I6(1).
Step 5	end Example: <pre>switch(config-ip-sla-echo)# end</pre>	Exits IP SLA ICMP Echo configuration mode and returns to privileged EXEC mode.

What to do next

To add proactive threshold conditions and reactive triggering to an IP Service Level Agreements (SLAs) operation for the purpose of generating traps or for starting another operation, see the “Configuring Proactive Threshold Monitoring” section in the “Configuring Proactive Threshold Monitoring for IP SLAs Operations” chapter.

Configuring an ICMP Echo Operation with Optional Parameters

Before you begin

Perform this task on the source device.

SUMMARY STEPS

1. **configure terminal**
2. **feature sla sender**
3. **ip sla operation-number**
4. **icmp-echo** {*destination-ipv4-address* | *destination-ipv6-address* | *destination-hostname*} [**source-ip** {*ipv4-address* | *ipv6-address* | *hostname*} | **source-interface interface-name**]
5. (Optional) **history buckets-kept size**
6. (Optional) **history distributions-of-statistics-kept size**
7. (Optional) **history enhanced** [*interval seconds*] [*buckets number-of-buckets*]
8. (Optional) **history filter** {*none* | *all* | *overThreshold* | *failures*}
9. (Optional) **frequency seconds**
10. (Optional) **history hours-of-statistics-kept hours**
11. (Optional) **history lives-kept lives**
12. (Optional) **owner owner-id**

13. (Optional) **request-data-size** *bytes*
14. (Optional) **history statistics-distribution-interval** *milliseconds*
15. (Optional) **tag** *text*
16. (Optional) **threshold** *milliseconds*
17. (Optional) **timeout** *milliseconds*
18. (Optional) **{tos | traffic-class}** *number*
19. (Optional) **verify-data**
20. (Optional) **vrf** {*vrf-name* | **default** | **management**}
21. **end**

DETAILED STEPS

	Command or Action	Purpose
Step 1	configure terminal Example: switch# configure terminal	Enters global configuration mode.
Step 2	feature sla sender Example: switch(config)# feature sla sender	Enables the IP SLAs operation feature.
Step 3	ip sla operation-number Example: switch(config)# ip sla 6	Begins configuration for an IP SLAs operation and enters IP SLA configuration mode.
Step 4	icmp-echo { <i>destination-ipv4-address</i> <i>destination-ipv6-address</i> <i>destination-hostname</i> } [source-ip { <i>ipv4-address</i> <i>ipv6-address</i> <i>hostname</i> } source-interface <i>interface-name</i>] Example: switch(config-ip-sla)# icmp-echo 192.0.2.134 source-ip 192.0.2.132 Example: switch(config-ip-sla)# icmp-echo 2016:1:1::2 source-ip 2016:1:1::1	Defines an Echo operation and enters IP SLA Echo configuration mode. Note IPv6 is supported for Cisco Nexus 9300 and 9500 switches beginning with Cisco NX-OS Release 7.0(3)I6(1).
Step 5	(Optional) history buckets-kept <i>size</i> Example: switch(config-ip-sla-echo)# history buckets-kept 25	Sets the number of history buckets that are kept during the lifetime of an IP SLAs operation.
Step 6	(Optional) history distributions-of-statistics-kept <i>size</i> Example: switch(config-ip-sla-echo)# history distributions-of-statistics-kept 5	Sets the number of statistics distributions that are kept per hop during an IP SLAs operation.

	Command or Action	Purpose
Step 7	(Optional) history enhanced [<i>interval seconds</i>] [<i>buckets number-of-buckets</i>] Example: <pre>switch(config-ip-sla-echo)# history enhanced interval 900 buckets 100</pre>	Enables enhanced history gathering for an IP SLAs operation.
Step 8	(Optional) history filter { <i>none</i> <i>all</i> <i>overThreshold</i> <i>failures</i> } Example: <pre>switch(config-ip-sla-echo)# history filter failures</pre>	Defines the type of information kept in the history table for an IP SLAs operation.
Step 9	(Optional) frequency <i>seconds</i> Example: <pre>switch(config-ip-sla-echo)# frequency 30</pre>	Sets the rate at which a specified IP SLAs operation repeats.
Step 10	(Optional) history hours-of-statistics-kept <i>hours</i> Example: <pre>switch(config-ip-sla-echo)# history hours-of-statistics-kept 4</pre>	Sets the number of hours for which statistics are maintained for an IP SLAs operation.
Step 11	(Optional) history lives-kept <i>lives</i> Example: <pre>switch(config-ip-sla-echo)# history lives-kept 5</pre>	Sets the number of lives maintained in the history table for an IP SLAs operation.
Step 12	(Optional) owner <i>owner-id</i> Example: <pre>switch(config-ip-sla-echo)# owner admin</pre>	Configures the Simple Network Management Protocol (SNMP) owner of an IP SLAs operation.
Step 13	(Optional) request-data-size <i>bytes</i> Example: <pre>switch(config-ip-sla-echo)# request-data-size 64</pre>	Sets the protocol data size in the payload of an IP SLAs operation's request packet.
Step 14	(Optional) history statistics-distribution-interval <i>milliseconds</i> Example: <pre>switch(config-ip-sla-echo)# history statistics-distribution-interval 10</pre>	Sets the time interval for each statistics distribution kept for an IP SLAs operation.
Step 15	(Optional) tag <i>text</i> Example: <pre>switch(config-ip-sla-echo)# tag TelnetPollServer1</pre>	Creates a user-specified identifier for an IP SLAs operation.

	Command or Action	Purpose
Step 16	(Optional) threshold <i>milliseconds</i> Example: switch(config-ip-sla-echo)# threshold 10000	Sets the upper threshold value for calculating network monitoring statistics created by an IP SLAs operation.
Step 17	(Optional) timeout <i>milliseconds</i> Example: switch(config-ip-sla-echo)# timeout 10000	Sets the amount of time an IP SLAs operation waits for a response from its request packet.
Step 18	(Optional) { tos traffic-class } <i>number</i> Example: switch(config-ip-sla-echo)# tos 160 Example: switch(config-ip-sla-echo)# traffic-class 160	In an IPv4 network only, defines a type of service (ToS) byte in the IPv4 header of an IP SLAs operation. In an IPv6 network only, defines a traffic-class byte in the IPv6 header of an IP SLAs operation for the supported IP SLAs operation. Note IPv6 is supported for Cisco Nexus 9300 and 9500 switches beginning with Cisco NX-OS Release 7.0(3)I6(1).
Step 19	(Optional) verify-data Example: switch(config-ip-sla-echo)# verify-data	Causes an IP SLAs operation to check each reply packet for data corruption.
Step 20	(Optional) vrf { <i>vrf-name</i> default management } Example: switch(config-ip-sla-echo)# vrf vpn-A	Allows monitoring within Multiprotocol Label Switching (MPLS) Virtual Private Networks (VPNs) using IP SLAs operations.
Step 21	end Example: switch(config-ip-sla-echo)# end	Exits IP SLA Echo configuration mode and returns to privileged EXEC mode.

What to do next

To add proactive threshold conditions and reactive triggering to an IP Service Level Agreements (SLAs) operation for the purpose of generating traps or for starting another operation, see the “Configuring Proactive Threshold Monitoring” section in the “Configuring Proactive Threshold Monitoring for IP SLAs Operations” chapter.

Scheduling IP SLAs Operations

This section describes how to schedule IP SLAs operations.

Before you begin**Note**

- All IP SLAs operations to be scheduled must be already configured.
- The frequency of all operations scheduled in a multioperation group must be the same.
- The list of one or more operation ID numbers to be added to a multioperation group is limited to a maximum of 125 characters, including commas (,).

**Tip**

- If the IP SLAs operation is not running and generating statistics, add the **verify-data** command to the configuration of the operation (while configuring in IP SLA configuration mode) to enable data verification. When enabled, each operation response is checked for corruption. Use the **verify-data** command with caution during normal operations because it generates unnecessary overhead.
- Use the **debug ip sla trace** and **debug ip sla error** commands to help troubleshoot issues with an IP SLAs operation.

SUMMARY STEPS

1. **enable**
2. **configure terminal**
3. Do one of the following:

- **ip sla schedule** *operation-number* [**life forever** { | *seconds*}] [**starttime** {*hh : mm[: ss]* [*month day* | *day month*]} | **pending** | **now** | **after** *hh : mm : ss*}] [**ageout** *seconds*] [**recurring**]

Example:

```
ip sla schedule operation-number [life {forever | seconds}] [starttime {hh : mm[: ss] [month day | day month] | pending | now | after hh : mm : ss}] [ageout seconds] [recurring]
```

- **ip sla group schedule** *group-operation-number* *operation-id-numbers* **schedule-period** *schedule-period-range* [**ageout** *seconds*] [**frequency** *group-operation-frequency*] [**life** {**forever** | *seconds*}] [**starttime** { *hh:mm:ss* [*month day* | *day month*]} | **pending** | **now** | **after** *hh:mm:ss*}]

Example:

```
switch(config)# ip sla group schedule 1 3,4,6-9
```

4. **exit**
5. **show ip sla group schedule**
6. **show ip sla configuration**

DETAILED STEPS

	Command or Action	Purpose
Step 1	enable Example:	Enables privileged EXEC mode. Enter your password if prompted.

	Command or Action	Purpose
	<code>switch> enable</code>	
Step 2	configure terminal Example: <code>switch# configure terminal</code>	Enters global configuration mode.
Step 3	Do one of the following: <ul style="list-style-type: none"> • ip sla schedule <i>operation-number</i> [life forever { <i>seconds</i>}] [starttime {<i>hh : mm[: ss]</i> [<i>month day day month</i>] pending now after <i>hh : mm : ss</i>}] [ageout <i>seconds</i>] [recurring] Example: <pre>ip sla schedule operation-number [life {forever seconds}] [starttime {hh : mm[: ss] [month day day month] pending now after hh : mm : ss}] [ageout seconds] [recurring]</pre> <ul style="list-style-type: none"> • ip sla group schedule <i>group-operation-number</i> <i>operation-id-numbers</i> schedule-period <i>schedule-period-range</i> [ageout <i>seconds</i>] [frequency <i>group-operation-frequency</i>] [life{forever <i>seconds</i>}] [starttime{ <i>hh:mm[:ss]</i> [<i>month day day month</i>] pending now after <i>hh:mm:ss</i>}] Example: <pre>switch(config)# ip sla group schedule 1 3,4,6-9</pre>	- <ul style="list-style-type: none"> • For individual IP SLAs operations only: Configures the scheduling parameters for an individual IP SLAs operation. • For the multioperations scheduler only: Specifies an IP SLAs operation group number and the range of operation numbers to be scheduled in global configuration mode.
Step 4	exit Example: <code>switch(config)# exit</code>	Exits to privileged EXEC mode.
Step 5	show ip sla group schedule Example: <code>switch# show ip sla group schedule</code>	(Optional) Displays the IP SLAs group schedule details.
Step 6	show ip sla configuration Example: <code>switch# show ip sla configuration</code>	(Optional) Displays the IP SLAs configuration details.

What to do next

To add proactive threshold conditions and reactive triggering for generating traps or for starting another operation, see the Configuring Proactive Threshold Monitoring section.

To view and interpret the results of an IP SLAs operation, use the **show ip sla statistics** command. Checking the output for fields that correspond to criteria in your service level agreement will help you determine whether the service metrics are acceptable.

Troubleshooting Tips

- If the IP SLAs operation is not running and not generating statistics, add the **verify-data** command to the configuration of the operation (while configuring in IP SLA configuration mode) to enable data verification. When data verification is enabled, each operation response is checked for corruption. Use the **verify-data** command with caution during normal operations because it generates unnecessary overhead.
- Use the **debug ip sla trace** and **debug ip sla error** commands to help troubleshoot issues with an IP SLAs operation.

What to Do Next

To add proactive threshold conditions and reactive triggering to an IP Service Level Agreements (SLAs) operation for the purpose of generating traps or for starting another operation, see the “Configuring Proactive Threshold Monitoring” section in the “Configuring Proactive Threshold Monitoring for IP SLAs Operations” chapter.

Configuration Examples for IP SLAs ICMP Echo Operations

Example: Configuring a Basic ICMP Echo Operation on a Source Device

This example shows how to configure a basic ICMP Echo Operation on a source device:

```
switch# configure terminal
switch(config)# feature sla sender
switch(config)# ip sla 6
switch(config-ip-sla)# icmp-echo 192.0.2.134 source-ip 192.0.2.132
switch(config-ip-sla-echo)# end
```

Example: Configuring an ICMP Echo Operation with Optional Parameters

This example shows how to configure an IP SLAs ICMP Echo operation using IPv4:

```
switch# configure terminal
switch(config)# feature sla sender
switch(config)# ip sla 6
switch(config-ip-sla)# icmp-echo 192.0.2.134 source-ip 192.0.2.132
switch(config-ip-sla-echo)# frequency 300
switch(config-ip-sla-echo)# request-data-size 38
switch(config-ip-sla-echo)# tos 160
switch(config-ip-sla-echo)# timeout 6000
switch(config-ip-sla-echo)# tag SFO-RO
switch(config-ip-sla-echo)# end
```

This example shows how to configure an IP SLAs ICMP Echo operation using IPv6:

```
switch# configure terminal
switch(config)# feature sla sender
switch(config)# ip sla 6
switch(config-ip-sla)# icmp-echo 2016:1:1::2 source-ip 2016:1:1::1
switch(config-ip-sla-echo)# frequency 300
switch(config-ip-sla-echo)# request-data-size 38
switch(config-ip-sla-echo)# traffic-class 160
switch(config-ip-sla-echo)# timeout 6000
switch(config-ip-sla-echo)# tag SFO-RO
switch(config-ip-sla-echo)# end
```

Example: Scheduling IP SLAs Operations

This example shows how to schedule an IP SLAs operation that is already configured:

```
switch# configure terminal
switch(config)# feature sla sender
switch(config)# ip sla schedule 6 life forever start-time now
switch(config)# exit
```



CHAPTER 13

IP SLAs TWAMP Responder

This module describes how to configure an IETF Two-Way Active Measurement Protocol (TWAMP) responder on a Cisco device to measure IP performance between the Cisco device and a non-Cisco TWAMP control device on your network.

- [Prerequisites for IP SLAs TWAMP Responder, on page 115](#)
- [Restrictions for IP SLAs TWAMP Responder, on page 115](#)
- [Information About IP SLAs TWAMP Responder, on page 115](#)
- [How to Configure an IP SLAs TWAMP Responder, on page 117](#)
- [Configuration Examples for IP SLAs TWAMP Responder, on page 119](#)
- [Additional References, on page 121](#)

Prerequisites for IP SLAs TWAMP Responder

For the IP SLAs TWAMP responder to function, a TWAMP control-client and the session-sender must be configured in your network.

Restrictions for IP SLAs TWAMP Responder

- For IP SLAs TWAMP Responder v1.0, the TWAMP server and the session-reflector must be configured on the same Cisco device.
- TWAMP client and session sender is not supported.
- Up to ten control sessions can be configured and established for one TWAMP responder.
- TWAMP Light mode is not supported.

Information About IP SLAs TWAMP Responder

TWAMP

The IETF Two-Way Active Measurement Protocol (TWAMP) defines a standard for measuring round-trip network performance between any two devices that support the TWAMP protocols. The TWAMP-Control

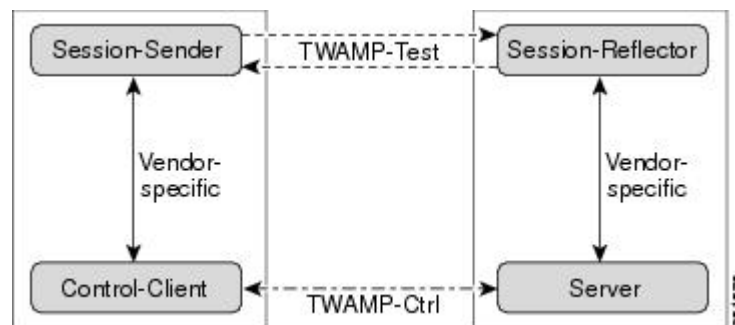
protocol is used to set up performance measurement sessions. The TWAMP-Test protocol is used to send and receive performance-measurement probes.

The TWAMP architecture is composed of the following four logical entities that are responsible for starting a monitoring session and exchanging packets:

- The control-client sets up, starts, and stops TWAMP-Test sessions.
- The session-sender instantiates TWAMP-Test packets that are sent to the session-reflector.
- The session-reflector reflects a measurement packet upon receiving a TWAMP-Test packet. The session-reflector does not collect packet statistics in TWAMP.
- The TWAMP server is an end system that manages one or more TWAMP sessions and is also capable of configuring per-session ports in the endpoints. The server listens on the TCP port. The session-reflector and server make up the TWAMP responder in an IP SLAs operation.

Although TWAMP defines the different entities for flexibility, it also allows for logical merging of the roles on a single device for ease of implementation. The following figure shows the four entities that make up the TWAMP architecture.

Figure 11: TWAMP Architecture

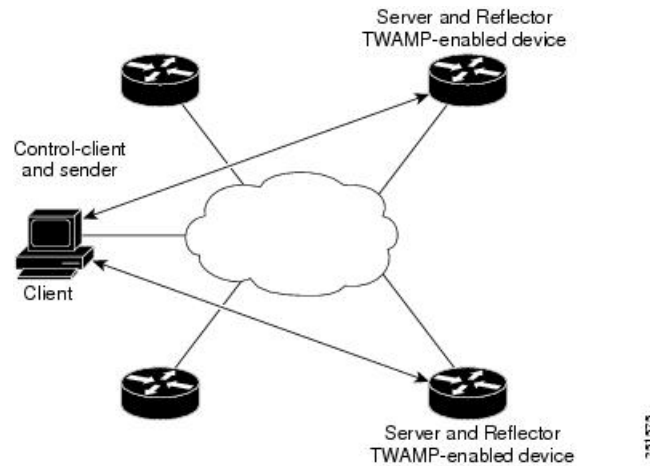


IP SLAs TWAMP Responder v1.0

A TWAMP responder interoperates with the control-client and session-sender on another device that supports TWAMP. In the IP SLAs TWAMP Responder v1.0 feature, the session-reflector and TWAMP server that make up the responder must be colocated on the same device.

In the following figure, one device is the control-client and session-sender (TWAMP control device), and the other two devices are Cisco devices that are configured as IP SLAs TWAMP responders. Each IP SLAs TWAMP responder is both a TWAMP server and a session-reflector.

Figure 12: IP SLAs TWAMP Responders in a Basic TWAMP Deployment



How to Configure an IP SLAs TWAMP Responder

Configuring the TWAMP Server



Note For IP SLAs TWAMP Responder v1.0, the TWAMP server and the session-reflector are configured on the same device.

SUMMARY STEPS

1. **enable**
2. **configure terminal**
3. **feature sla twamp-server**
4. **ip sla server twamp**
5. **port *port-number***
6. **timer inactivity *seconds***
7. **end**

DETAILED STEPS

	Command or Action	Purpose
Step 1	enable Example: switch> enable	Enables privileged EXEC mode. <ul style="list-style-type: none"> • Enter your password if prompted.
Step 2	configure terminal Example:	Enters global configuration mode.

	Command or Action	Purpose
	<code>switch# configure terminal</code>	
Step 3	feature sla twamp-server Example: <code>switch(config)# feature sla twamp-server</code>	Configures the device as a TWAMP server.
Step 4	ip sla server twamp Example: <code>switch(config)# ip sla server twamp</code>	Enters the TWAMP server configuration mode.
Step 5	port <i>port-number</i> Example: <code>switch(config-twamp-srvr)# port 9000</code>	(Optional) Configures the port to be used by the TWAMP server to listen for connection and control requests.
Step 6	timer inactivity <i>seconds</i> Example: <code>switch(config-twamp-srvr)# timer inactivity 300</code>	(Optional) Configures the inactivity timer for a TWAMP control session.
Step 7	end Example: <code>switch(config-twamp-srvr)# end</code>	Returns to privileged EXEC mode.

Configuring the Session-Reflector



Note For IP SLAs TWAMP Responder v1.0, the TWAMP server and the session-reflector are configured on the same device.

SUMMARY STEPS

1. **enable**
2. **configure terminal**
3. **feature sla responder**
4. **ip sla responder twamp**
5. **timeout *seconds***
6. **end**

DETAILED STEPS

	Command or Action	Purpose
Step 1	enable Example: <code>switch> enable</code>	Enables privileged EXEC mode. <ul style="list-style-type: none"> • Enter your password if prompted.

	Command or Action	Purpose
Step 2	configure terminal Example: switch# configure terminal	Enters global configuration mode.
Step 3	feature sla responder Example: switch(config)# feature sla responder	Configures the device as a TWAMP server.
Step 4	ip sla responder twamp Example: switch(config)# ip sla server twamp	Enters the TWAMP responder configuration mode.
Step 5	timeout seconds Example: switch(config-twamp-ref)# timeout 300	(Optional) Configures a timeout for a TWAMP test session.
Step 6	end Example: switch(config-twamp-ref)# end	Exits to privileged EXEC mode.

Configuration Examples for IP SLAs TWAMP Responder

IP SLAs TWAMP Responder v1.0 Example

The following example and partial output shows how to configure the TWAMP server and the session-reflector for IP SLAs TWAMP Responder v1.0 on the same Cisco device. In this configuration, port 862 is the (default) port to be used by the TWAMP server to listen for connection and control requests. The default port for the server listener is the RFC-specified port and can be reconfigured, if required.



Note In order for the IP SLAs TWAMP responder to function, a control-client and the session-sender must be configured in your network.

```
switch> enable
switch# configure terminal
switch(config)# ip sla server twamp
switch(config-twamp-srvr)# exit
switch(config)# ip sla responder twamp
switch(config-twamp-ref)# end
switch> show running-config
.
.
.
```

```
ip sla responder
ip sla responder twamp
ip sla server twamp
```

Verifying the IP SLA TWAMP Responder Configuration

To display IP SLA TWAMP Responder configuration information, perform one of the following tasks:

Command	Purpose
show ip sla twamp standards	Displays the RFC standards in use by the IP SLA TWAMP responder.
show ip sla twamp session	Displays sender and receiver information about the IP SLA TWAMP session.
show ip sla twamp connection [detail requests]	Displays information about IP SLA TWAMP connection. You can specify the following options: <ul style="list-style-type: none"> • Details - Displays the current client connection details. Details include: Client IP Address, Client Port, VRF, Mode, Connection State, Control State, and Number of Test Requests. • Requests - Displays the current connection requests.

The following example shows the current RFC Standards in use in the IP SLA TWAMP Responder.

```
switch# show ip sla twamp standards
Feature           Organization      Standard
TWAMP             Server IETF      RFC5357
TWAMP             Reflector IETF   RFC5357
```

The following example shows sender and receiver information about the IP SLA TWAMP session.

```
switch# show ip sla twamp session
IP SLAs Responder TWAMP is: Enabled
Recv Addr: 30.30.30.1
Recv Port: 7147
Sender Addr: 30.30.30.2
Sender Port: 50790
Sender VRF: default
Session Id: 30.30.30.1:15918249420668138422:DF55BEE9
Connection Id: 21
```

The following example displays the current client connection details.

```
switch# show ip sla twamp connection detail
Connection Id:      21
Client IP Address: 30.30.30.2
Client Port:       58316
Client VRF:        default
Mode:              Unauthenticated
Connection State:  Connected
Control State:     Active
Number of Test Requests - 0:1
```

Additional References

Standards and RFCs

Standard/RFC	Title
RFC 5357	<i>Two-Way Active Measurement Protocol (TWAMP)</i>
RFC 4656	<i>One-way Active Measurement Protocol (OWAMP)</i>

Additional References



INDEX

C

codec-interval [28](#)
codec-numpacket [28](#)
codec-size [28](#)
configure terminal [16–17](#)
control [52](#)
control disable [17, 54](#)

D

debug ip sla error [28, 44, 54, 111, 113](#)
debug ip sla sender error [16, 52](#)
debug ip sla sender trace [16, 52](#)
debug ip sla trace [28, 44, 54, 111, 113](#)
disable [52](#)
dns [98–100](#)

E

enable [13–14, 16–17, 28–29, 38–39, 44–45, 50–52, 54–55, 77–78, 85–86, 111](#)
end [98–99, 101, 106–108, 110](#)

F

feature sla responder [13, 38–39, 50–51](#)
feature sla sender [14, 16–17, 28–29, 52–55, 98–100, 106–108](#)
frequency [14–16, 18, 28, 30, 52–53, 55–56, 98–100, 107, 109](#)
frequency 10 [75](#)

H

history buckets-kept [16, 55–56, 99–100, 107–108](#)
history distributions-of-statistics-kept [16–17, 28, 55–56, 99–100, 107–108](#)
history enhanced [55–56, 107, 109](#)
history enhanced interval [16–17, 28, 30](#)
history filter [16, 55–56, 99–100, 107, 109](#)
history hours-of-statistics [16](#)
history hours-of-statistics-kept [16, 18, 28, 30, 55–56, 99–100, 107, 109](#)
history lives-kept [16, 55–56, 99, 101, 107, 109](#)
history statistics-distribution-interval [16, 18, 28, 55, 57, 99, 101, 108–109](#)

I

icmp-echo [92–93, 106–108, 113](#)
interface [92, 94](#)
ip access-list standard [92–93](#)
ip address [92, 95](#)
ip policy route-map [92, 95](#)
ip sla [14, 16–17, 28–29, 52–55, 92, 98–100, 106–108](#)
ip sla group schedule [44–45, 77–78, 102, 111–112](#)
ip sla logging traps [85–86](#)
ip sla reaction-configuration [85–86](#)
ip sla reaction-trigger [85–86](#)
ip sla responder [13, 38–39, 50–51](#)
ip sla responder tcp-connect ipaddress [50–51](#)
ip sla responder udp-echo ipaddress [13, 38–39](#)
ip sla schedule [14–15, 17, 19, 29, 31, 44–45, 52–53, 55, 57, 92–93, 102, 111–112, 114](#)
ipv6 access-list [92–93](#)
ipv6 address [92, 95](#)
ipv6 policy route-map [92, 95](#)

M

match ip address [92, 94](#)
match ipv6 address [92, 94](#)

O

owner [16, 18, 29–30, 55–56, 99, 101, 107, 109](#)

P

permit ip [92–93](#)
permit ipv6 [92–93](#)

R

request-data-size [16, 18, 28, 108–109](#)
route-map [92, 94](#)

S

samples-of-history-kept [16](#)
schedule-period [78](#)

set ip next-hop verify-availability [92, 94](#)
set ipv6 next-hop verify-availability [92, 94](#)
show ip sla [33](#)
show ip sla application [10](#)
show ip sla configuration [14–15, 17, 19, 28–29, 31, 44–45, 55, 58, 77–79, 102–103, 111–112](#)
show ip sla group schedule [44–45, 77–78, 102–103, 111–112](#)
show ip sla history [16](#)
show ip sla reaction configuration [86–87](#)
show ip sla reaction trigger [86–87](#)
show ip sla statistics [19, 31, 46, 54, 58, 79, 113](#)
show ip sla twamp connection [120](#)
show ip sla twamp session [120](#)
show ip sla twamp standards [120](#)
show route-map [92, 95](#)
show sockets local-port-range [12, 38, 50](#)
show track [92, 95](#)
snmp-server enable traps [86](#)
snmp-server enable traps ip sla [85–86](#)
snmp-server host [86](#)

T

tag [16, 18, 29–30, 55, 57, 99, 101, 108–109](#)
tcp-connect [52–55](#)
threshold [16, 18, 29–30, 55, 57, 99, 101, 108, 110, 113](#)
timeout [16, 18, 29–30, 55, 57, 99, 101, 108, 110](#)
tos [16, 18, 29–30, 55, 57, 108, 110](#)
tos traffic-class number [108, 110](#)
track [92–93](#)
trapAndTrigger [86](#)
triggerOnly [86](#)

U

udp-jitter [14–17, 24, 28–29](#)

V

verify-data [16, 19, 28–30, 44, 54, 108, 110–111, 113](#)
vrf [16, 19, 29, 31, 108, 110](#)