



Presence Service

- [Prerequisites for Presence Service, on page 1](#)
- [Restrictions for Presence Service, on page 1](#)
- [Information About Presence Service, on page 1](#)
- [Configure Presence Service, on page 5](#)
- [Configuration Examples for Presence Service, on page 18](#)
- [Feature Information for Presence Service, on page 22](#)

Prerequisites for Presence Service

- Cisco Unified CME 4.1 or a later version.

Restrictions for Presence Service

- Presence features such as Busy Lamp Field (BLF) notification are supported for SIP trunks only; these features are not supported on H.323 trunks.
- Presence requires that SIP phones are configured with a directory number (using **dn** keyword in **number** command); direct line numbers are not supported.

Information About Presence Service

Presence Service

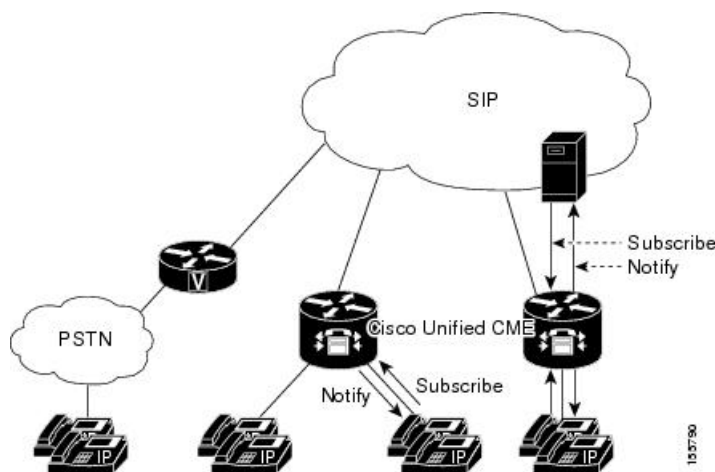
A presence service, as defined in RFC 2778 and RFC 2779, is a system for finding, retrieving, and distributing presence information from a source, called a presence entity (presentity), to an interested party called a watcher. When you configure presence in a Cisco Unified CME system with a SIP WAN connection, a phone user, or watcher, can monitor the real-time status of another user at a directory number, the presentity. Presence enables the calling party to know before dialing whether the called party is available. For example, a directory application may show that a user is busy, saving the caller the time and inconvenience of not being able to reach someone.

Presence uses SIP SUBSCRIBE and NOTIFY methods to allow users and applications to subscribe to changes in the line status of phones in a Cisco Unified CME system. Phones act as watchers and a presence identity is identified by a directory number on a phone. Watchers initiate presence requests (SUBSCRIBE messages) to obtain the line status of a presence identity. Cisco Unified CME responds with the presence identity's status. Each time a status changes for a presence identity, all watchers of this presence identity are sent a notification message. SIP phones and trunks use SIP messages; SCCP phones use presence primitives in SCCP messages.

Presence supports Busy Lamp Field (BLF) notification features for speed-dial buttons and directory call lists for missed calls, placed calls, and received calls. SIP and SCCP phones that support the BLF speed-dial and BLF call-list features can subscribe to status change notification for internal and external directory numbers.

Figure 1: BLF Notification Using Presence shows a Cisco Unified CME system supporting BLF notification for internal and external directory numbers. If the watcher and the presence identity are not both internal to the Cisco Unified CME router, the subscribe message is handled by a presence proxy server.

Figure 1: BLF Notification Using Presence



The following line states display through BLF indicators on the phone:

- Line is idle—Displays when this line is not being used.
- Line is in-use—Displays when the line is in the ringing state and when a user is on the line, whether or not this line can accept a new call.
- BLF indicator unknown—Phone is unregistered or this line is not allowed to be watched.

Cisco Unified CME acts as a presence agent for internal lines (both SIP and SCCP) and as a presence server for external watchers connected through a SIP trunk, providing the following functionality:

- Processes SUBSCRIBE requests from internal lines to internal lines. Notifies internal subscribers of any status change.
- Processes incoming SUBSCRIBE requests from a SIP trunk for internal SCCP and SIP lines. Notifies external subscribers of any status change.
- Sends SUBSCRIBE requests to external presence identities on behalf of internal lines. Relays status responses to internal lines.

Presence subscription requests from SIP trunks can be authenticated and authorized. Local subscription requests cannot be authenticated.

For configuration information, see [Configure Presence Service](#).

BLF Monitoring of Ephone-DNs with DnD, Call Park, Paging, and Conferencing

In versions earlier than Cisco Unified CME 7.1, BLF monitoring does not provide notification of status changes when a monitored directory number becomes DND-enabled, and the Busy Lamp Field (BLF) indicators for directory numbers configured as call-park slots, paging numbers, or ad hoc or meet-me conference numbers display only the unknown line-status.

Cisco Unified CME 7.1 and later versions support idle, in-use, and unknown BLF status indicators for monitored ephone-dns configured as call-park slots, paging numbers, and ad hoc or meet-me conference numbers. This allows an administrator (watcher) to monitor a call-park slot to see if calls are parked and not yet retrieved, which paging number is available for paging, or which conference number is available for a conference.

An ephone-dn configured as a park-slot is not registered with any phone. In Cisco Unified CME 7.1 and later versions, if a monitored park-slot is idle, the BLF status shows idle on the watcher. If there is a call parked on the monitored park-slot, the BLF status indicates in-use. If the monitored park-slot is not enabled for BLF monitoring with the **allow watch** command, the BLF indicator for unknown status displays on the watcher.

An ephone-dn configured for paging or conferencing is also not registered with any phone. The indicators for the idle, in-use, and unknown BLF status are displayed for the monitored paging number and ad hoc or meet-me conference numbers, as with the call-park slots.

Cisco Unified CME 7.1 and later versions support the Do Not Disturb (DnD) BLF status indicator for ephone-dns in the DnD state. When a user presses the DnD softkey on an SCCP phone, all directory numbers assigned to the phone become DnD-enabled and a silent-ring is played for all calls to any directory number on the phone. If a monitored ephone-dn becomes DnD-enabled, the corresponding BLF speed-dial lamp (if available) on the watcher displays solid red with the DnD icon for both the idle and in-use BLF status.

The BLF status notification occurs if the monitored ephone-dn is:

- The primary directory number on only one SCCP phone
- A directory number that is not shared
- A shared directory number and all associated phones are DnD-enabled

No new configuration is required to support these enhancements. For information on configuring BLF monitoring of directory numbers, see [Enable BLF Monitor for Speed-Dials and Call Lists Using SCCP Phones](#).

[Table 1: Feature Comparison of Directory Number BLF Monitoring](#) compares the different BLF monitoring features that can be configured in Cisco Unified CME.

Table 1: Feature Comparison of Directory Number BLF Monitoring

Monitor Mode (Button "m")	Watch Mode (Button "w")	BLF Monitoring
Basic Operation		

Monitor Mode (Button “m”)	Watch Mode (Button “w”)	BLF Monitoring
<p>SCCP phones only.</p> <p>Watches a single ephone-dn instance.</p> <p>If there are multiple ephone-dns with the same extension (such as in an overlay), this mode watches only a single ephone-dn (specified with the button command using m keyword).</p> <p>Does not indicate DND state of the phone.</p>	<p>SCCP phones only.</p> <p>Watches all activity on the phone for which the designated ephone-dn is the primary extension.</p> <p>(The ephone-dn is “primary” for a phone if the extension appears on button 1 or on the button indicated by the auto-line command.)</p> <p>Ephone-dn can be shared but cannot be the primary extension on any other phone.</p> <p>Indicates DND state of the phone.</p>	<p>SCCP and SIP phones.</p> <p>Watches all ephone-dn instances with the same (primary) extension number. The BLF lamp is on if any instance of the monitored extension is in use.</p> <p>Indicates DND state of the phone.</p> <p>Note BLF monitoring is supported only if the presence entity (presentity) is an SCCP phone. If you enable DND on a SIP phone, LED doesn't glow. Hence, the phone user or administrator (watcher) isn't notified.</p>
Shared Lines		
<p>Can not distinguish which phone is using the ephone-dn if the DN is shared across multiple phones.</p>	<p>Designed for cases where ephone-dns are shared across multiple phones.</p> <p>Each phone must have a unique primary ephone-dn.</p> <p>Used to indicate that a specific phone is in use as opposed (button m) to indicating that a specific ephone-dn is in use.</p>	<p>Cannot distinguish which phone is using the ephone-dn, if the DN is shared across multiple phones.</p>
Local vs. Remote		
<p>Monitors only DNs on the local Cisco Unified CME system.</p>	<p>Can only monitor DNs that are on the local Cisco Unified CME system</p>	<p>Can monitor extension numbers on a remote Cisco Unified CME using SIP Subscribe and Notify. Cannot monitor local and remote at the same time.</p>

Device-Based BLF Monitoring

Device-based BLF monitoring provides a phone user or administrator (watcher) information about the status of a monitored phone (presentity). Cisco Unified CME 4.1 and later versions support BLF monitoring of directory numbers associated with speed-dial buttons, call logs, and directory listings. Cisco Unified CME 7.1

and later versions support device-based BLF monitoring, allowing a watcher to monitor the status of a phone, not only a line on the phone.

To identify the phone being monitored for BLF status, Cisco Unified CME selects the phone with the monitored directory number assigned to the first button, or the directory number whose button is selected by the **auto-line** command (SCCP only). If more than one phone uses the same number as its primary directory number, the phone with the lowest phone tag is monitored for BLF status.

For Extension Mobility phones, the first number configured in the user profile indicates the primary directory number of the Extension Mobility phone. If the Extension Mobility phone is being monitored, the BLF status of the corresponding phone is sent to the watcher when an extension-mobility user logs in or out, is idle, or busy.

If a shared directory number is busy on a monitored SCCP phone, and the monitored device is on-hook, the monitored phone is considered idle.

When a monitored phone receives a page, if the paging directory number is also monitored, the BLF status of the paging directory number shows busy on the watcher.

If device-based monitoring is enabled on a directory number configured as a call-park slot, and there is a call parked on this park-slot, the device-based BLF status indicates busy.

All directory numbers associated with a phone are in the DnD state when the DnD softkey is pressed. If a monitored phone becomes DnD-enabled, watchers are notified of the DnD status change.

For configuration information, see [Enable BLF Monitor for Speed-Dials and Call Lists Using SCCP Phones](#) or [Enable BLF Monitoring for Speed-Dials and Call Lists on SIP Phones](#).

Phone User Interface for BLF-Speed-Dial

Cisco Unified CME 8.5 and later versions allows the extension mobility (EM) users to configure dn-based Busy Lamp Field (BLF)-speed-dial settings directly on the phone through the services feature button. BLF-speed-dial settings are added or modified (changed or deleted) on the phone using a menu available with the Services button. Any changes to the BLF-speed-dial settings made through the phone user interface are applied to the user's profile in extension mobility. You can configure the BLF-speed-dial menu for SCCP phones using the **blf-speed-dial** command in ephone or ephone-template mode. For more information, see [Enable BLF-Speed-Dial Menu](#).

For information on how phone users configure BLF-speed-dial using the phone user-interface, see the [Cisco Unified IP Phone documentation](#) for Cisco Unified CME .

For phones that do not have EM feature, the BLF-speed-dial service is available in service url page. You can disable the BLF-speed-dial feature using the **no phone-ui blf-speed-dial** command on phones that do not have Extension Mobility.

Configure Presence Service

Enable Presence for Internal Lines

Perform the following steps to enable the router to accept incoming presence requests from internal watchers and SIP trunks.



Note The command **presence call-list** is an optional configuration, and it is not required to enable Presence on Unified CME. To enable a phone to monitor the line status of directory numbers or call list, such as a missed calls, placed calls, or received calls list, you can configure **presence call-list**.



Restriction

- A presentity can be identified by a directory number only.
- BLF monitoring indicates the line status only.
- Instant Messaging is not supported.

SUMMARY STEPS

1. **enable**
2. **configure terminal**
3. **sip-ua**
4. **presence enable**
5. **exit**
6. **presence**
7. **max-subscription** *number*
8. **presence call-list**
9. **end**

DETAILED STEPS

	Command or Action	Purpose
Step 1	enable Example: Router> enable	Enables privileged EXEC mode. <ul style="list-style-type: none"> • Enter your password if prompted.
Step 2	configure terminal Example: Router# configure terminal	Enters global configuration mode.
Step 3	sip-ua Example: Router(config)# sip-ua	Enters SIP user-agent configuration mode to configure the user agent.
Step 4	presence enable Example: Router(config-sip-ua)# presence enable	Allows the router to accept incoming presence requests.
Step 5	exit Example:	Exits SIP user-agent configuration mode.

	Command or Action	Purpose
	<code>Router(config-sip-ua)# exit</code>	
Step 6	<p>presence</p> <p>Example:</p> <pre>Router(config)# presence</pre>	Enables presence service and enters presence configuration mode.
Step 7	<p>max-subscription <i>number</i></p> <p>Example:</p> <pre>Router(config-presence)# max-subscription 128</pre>	<p>(Optional) Sets the maximum number of concurrent watch sessions that are allowed.</p> <ul style="list-style-type: none"> • <i>number</i>—Maximum watch sessions. Range: 100 to the maximum number of directory numbers supported on the router platform. Type ? to display range. Default: 100.
Step 8	<p>presence call-list</p> <p>Example:</p> <pre>Router(config-presence)# presence call-list</pre>	<p>(Optional) Globally enables BLF monitoring for directory numbers in call lists and directories on all locally registered phones.</p> <ul style="list-style-type: none"> • Only directory numbers that you enable for watching with the allow watch command display BLF status indicators. • This command enables the BLF call-list feature globally. To enable the feature for a specific phone, see Enable BLF Monitor for Speed-Dials and Call Lists Using SCCP Phones.
Step 9	<p>end</p> <p>Example:</p> <pre>Router(config-presence)# end</pre>	Exits to privileged EXEC mode.

Enable a Directory Number to be Watched

To enable a line associated with a directory number to be monitored by a phone registered to a Cisco Unified CME router, perform the following steps. The line is enabled as a presentity and phones can subscribe to its line status through the BLF call-list and BLF speed-dial features. There is no restriction on the type of phone that can have its lines monitored; any line on any IP phone or on an analog phone on supported voice gateways can be a presentity.



Restriction

- A presentity is identified by a directory number only.
- BLF monitoring indicates the line status only.

SUMMARY STEPS

1. enable

2. **configure terminal**
3. **ephone-dn** *dn-tag* [**dual-line**] or **voice register dn** *dn-tag*
4. **number** *number*
5. **allow watch**
6. **end**

DETAILED STEPS

	Command or Action	Purpose
Step 1	enable Example: Router> enable	Enables privileged EXEC mode. <ul style="list-style-type: none"> • Enter your password if prompted.
Step 2	configure terminal Example: Router# configure terminal	Enters global configuration mode.
Step 3	ephone-dn <i>dn-tag</i> [dual-line] or voice register dn <i>dn-tag</i> Example: Router(config)# ephone-dn 1 or Router(config)# voice register dn 1	Enters the configuration mode to define a directory number for an IP phone, intercom line, voice port, or a message-waiting indicator (MWI). <ul style="list-style-type: none"> • <i>dn-tag</i>—identifies a particular directory number during configuration tasks. Range is 1 to the maximum number of directory numbers allowed on the router platform, or the maximum defined by the max-dn command. Type ? to display range.
Step 4	number <i>number</i> Example: Router(config-ephone-dn)# number 3001 or Router(config-register-dn)# number 3001	Associates a phone number with a directory number to be assigned to an IP phone in Cisco Unified CME. <ul style="list-style-type: none"> • <i>number</i>—String of up to 16 characters that represents an E.164 telephone number.
Step 5	allow watch Example: Router(config-ephone-dn)# allow watch or Router(config-register-dn)# allow watch	Allows the phone line associated with this directory number to be monitored by a watcher in a presence service. <ul style="list-style-type: none"> • This command can also be configured in ephone-dn template configuration mode and applied to one or more phones. The ephone-dn configuration has priority over the ephone-dn template configuration.
Step 6	end Example: Router(config-ephone-dn)# end or Router(config-register-dn)# end	Exits to privileged EXEC mode.

Enable BLF Monitor for Speed-Dials and Call Lists Using SCCP Phones

A watcher can monitor the status of lines associated with internal and external directory numbers (presentities) through the BLF speed-dial and BLF call-list presence features. To enable the BLF notification features on an IP phone using SCCP, perform the following steps.



Restriction

- Device-based BLF monitoring for call lists is not supported.
- Device-based BLF-speed-dial monitoring is not supported for a remote watcher or presentity.

BLF Call-List

- Not supported on Cisco Unified IP Phone 7905, 7906, 7911, 7912, 7931, 7940, 7960, or 7985, Cisco Unified IP Phone Expansion Modules, or Cisco Unified IP Conference Stations.

BLF Speed-Dial

- Not supported on Cisco Unified IP Phone 7905, 7906, 7911, 7912, or 7985, or Cisco Unified IP Conference Stations.

Cisco Unified IP Phone 7931

- BLF status is displayed through monitor lamp only; BLF status icons are not displayed.

Before you begin

- Presence must be enabled on the Cisco Unified CME router. See [Enable Presence for Internal Lines](#).
- A directory number must be enabled as a presentity with the **allow watch** command to provide BLF status notification. See [Enable a Directory Number to be Watched](#).
- Device-based monitoring requires Cisco Unified CME 7.1 or a later version. All directory numbers associated with the monitored phone must be configured with the **allow watch** command. Otherwise, if any of the directory numbers is missing this configuration, an incorrect status could be reported to the watcher.

SUMMARY STEPS

1. **enable**
2. **configure terminal**
3. **ephone** *phone-tag*
4. **button** *button-number* {*separator*} *dn-tag* [,*dn-tag*...] [*button-number*{**x**}*overlay-button-number*] [*button-number*...]
5. **blf-speed-dial** *tag number label string* [**device**]
6. **presence call-list**
7. **end**

DETAILED STEPS

	Command or Action	Purpose
Step 1	enable Example: Router> enable	Enables privileged EXEC mode. <ul style="list-style-type: none"> • Enter your password if prompted.
Step 2	configure terminal Example: Router# configure terminal	Enters global configuration mode.
Step 3	ephone phone-tag Example: Router(config)# ephone 1	Enters ephone configuration mode to set phone-specific parameters for a SIP phone. <ul style="list-style-type: none"> • <i>phone-tag</i>—Unique sequence number of the phone to be configured. Range is version and platform-dependent; type ? to display range. You can modify the upper limit for this argument with the max-ephones command.
Step 4	button button-number {separator} dn-tag [,dn-tag...] [button-number{x} overlay-button-number] [button-number...] Example: Router(config-ephone)# button 1:10 2:11 3b12 4o13,14,15	Associates a button number and line characteristics with a directory number on the phone. <ul style="list-style-type: none"> • <i>button-number</i>—Number of a line button on an IP phone. • <i>separator</i>—Single character that denotes the type of characteristics to be associated with the button. • <i>dn-tag</i>—Unique sequence number of the ephone-dn that you want to appear on this button. For overlay lines (separator is o or c), this argument can contain up to 25 ephone-dn tags, separated by commas. • x—Separator that creates an overlay rollover button. • <i>overlay-button-number</i>—Number of the overlay button that should overflow to this button.
Step 5	blf-speed-dial tag number label string [device] Example: Router(config-ephone)# blf-speed-dial 3 3001 label sales device	Enables BLF monitoring of a directory number associated with a speed-dial number on the phone. <ul style="list-style-type: none"> • <i>tag</i>—Number that identifies the speed-dial index. Range: 1 to 33. • <i>number</i>—Telephone number to speed dial. • <i>string</i>—Alphanumeric label that identifies the speed-dial button. String can contain a maximum of 30 characters. • device—(Optional) Enables phone-based monitoring. This keyword is supported in Cisco Unified CME 7.1 and later versions.

	Command or Action	Purpose
Step 6	<p>presence call-list</p> <p>Example:</p> <pre>Router(config-ephone)# presence call-list</pre>	<p>Enables BLF monitoring of directory numbers that appear in call lists and directories on this phone.</p> <ul style="list-style-type: none"> • For a directory number to be monitored, it must have the allow watch command enabled. • To enable BLF monitoring for call lists on all phones in this Cisco Unified CME system, use this command in presence mode. See Enable Presence for Internal Lines, on page 5.
Step 7	<p>end</p> <p>Example:</p> <pre>Router(config-ephone)# end</pre>	<p>Exits to privileged EXEC mode.</p>

Example

The following example shows that the directory numbers for extensions 2001 and 2003 are allowed to be watched and the BLF status of these numbers display on phone 1.

```
ephone-dn 201
number 2001
allow watch
!
!
ephone-dn 203
number 2003
allow watch
!
!
ephone 1
mac-address 0012.7F54.EDC6
blf-speed-dial 2 201 label "sales" device
blf-speed-dial 3 203 label "service" device
button 1:100 2:101 3b102
```

What to do next

If you are done modifying parameters for SCCP phones in Cisco Unified CME, generate a new configuration profile by using the **create cnf-files** command and then restart the phones with the **restart** command. See [SCCP: Generating Configuration Files for SCCP Phones](#) and [SCCP: Using the restart Command](#).

Enable BLF Monitoring for Speed-Dials and Call Lists on SIP Phones

A watcher can monitor the status of lines associated with internal and external directory numbers (presentities) through the BLF speed-dial and BLF call-list presence features. To enable the BLF notification features on a SIP phone, perform the following steps.

**Restriction**

- Device-based BLF-speed-dial monitoring is not supported for a remote watcher or presentity.
- TCP based, device-based BLF-speed-dial monitoring is not supported on Unified CME.

BLF Call-List

- Not supported on Cisco Unified IP Phone 7905, 7906, 7911, 7912, 7931, 7940, 7960, or 7985, Cisco Unified IP Phone Expansion Modules, or Cisco Unified IP Conference Stations.

BLF Speed-Dial

- Not supported on Cisco Unified IP Phone 7905, 7906, 7911, 7912, or 7985, or Cisco Unified IP Conference Stations.

Before you begin

- Presence must be enabled on the Cisco Unified CME router. See [Enable Presence for Internal Lines](#).
- A directory number must be enabled as a presentity with the **allow watch** command to provide BLF status notification. See [Enable a Directory Number to be Watched](#).
- SIP phones must be configured with a directory number under voice register pool configuration mode (use **dn** keyword in **number** command); direct line numbers are not supported.
- Device-based monitoring requires Cisco Unified CME 7.1 or a later version. All directory numbers associated with the monitored phone must be configured with the **allow watch** command. Otherwise, if any of the directory numbers is missing this configuration, an incorrect status could be reported to the watcher.

SUMMARY STEPS

1. **enable**
2. **configure terminal**
3. **voice register pool** *pool-tag*
4. **number** *tag dn dn-tag*
5. **blf-speed-dial** *tag number label string* [**device**]
6. **presence call-list**
7. **end**

DETAILED STEPS

	Command or Action	Purpose
Step 1	enable Example: Router> enable	Enables privileged EXEC mode. <ul style="list-style-type: none"> • Enter your password if prompted.
Step 2	configure terminal Example:	Enters global configuration mode.

	Command or Action	Purpose
	Router# configure terminal	
Step 3	voice register pool <i>pool-tag</i> Example: Router(config)# voice register pool 1	Enters voice register pool configuration mode to set phone-specific parameters for a SIP phone. <ul style="list-style-type: none"> • <i>pool-tag</i>—Unique sequence number of the SIP phone to be configured. Range is version and platform-dependent; type ? to display range. You can modify the upper limit for this argument with the max-pool command.
Step 4	number tag dn <i>dn-tag</i> Example: Router(config-register-pool)# number 1 dn 2	Assigns a directory number to the SIP phone. <ul style="list-style-type: none"> • <i>tag</i>—identifier when there are multiple number commands. Range: 1 to 10. • <i>dn-tag</i>—Directory number tag that was defined using the voice register dn command.
Step 5	blf-speed-dial <i>tag number label string</i> [device] Example: Router(config-register-pool)# blf-speed-dial 3 3001 label sales device	Enables BLF monitoring of a directory number associated with a speed-dial number on the phone. <ul style="list-style-type: none"> • <i>tag</i>—Number that identifies the speed-dial index. Range: 1 to 7. • <i>number</i>—Telephone number to speed dial. • <i>string</i>—Alphanumeric label that identifies the speed-dial button. The string can contain a maximum of 30 characters. • device—(Optional) Enables phone-based monitoring. This keyword is supported in Cisco Unified CME 7.1 and later versions.
Step 6	presence call-list Example: Router(config-register-pool)# presence call-list	Enables BLF monitoring of directory numbers that appear in call lists and directories on this phone. <ul style="list-style-type: none"> • For a directory number to be monitored, it must have the allow watch command enabled. • To enable BLF monitoring for call lists on all phones in this Cisco Unified CME system, use this command in presence mode. See Enable Presence for Internal Lines.
Step 7	end Example: Router(config-register-pool)# end	Exits to privileged EXEC mode.

What to do next

If you are done modifying parameters for SIP phones in Cisco Unified CME, generate a new configuration profile by using the **create profile** command and then restart the phones with the **restart** command. See [SIP: Generating Configuration Profiles for SIP Phones](#) and [SIP: Using the restart Command](#).

Enable BLF-Speed-Dial Menu

**Restriction**

- EM user cannot modify the logout profile from phone user interface (UI).
- Extension Mobility (EM) users must log into EM profile to update BLF-speed-dial number.

Before you begin

- Cisco Unified CME 8.5 or later versions.

SUMMARY STEPS

1. **enable**
2. **configure terminal**
3. **ephone** *phone-tag*
4. **blf-speed-dial** [*index index number*] [**phone-number** *number*] [*label label text*]
5. **end**

DETAILED STEPS

	Command or Action	Purpose
Step 1	enable Example: Router> enable	Enables privileged EXEC mode. • Enter your password if prompted.
Step 2	configure terminal Example: Router# configure terminal	Enters global configuration mode.
Step 3	ephone <i>phone-tag</i> Example: Router(config)# ephone 10	Enters ephone configuration mode. • <i>phone-tag</i> —Unique number of the phone for which you want to configure BLF-speed-dial numbers.
Step 4	blf-speed-dial [<i>index index number</i>] [phone-number <i>number</i>] [<i>label label text</i>] Example: Router(config-ephone)#blf-speed-dial 1 2001 label "customer support"	Creates an entry for a BLF-speed-dial number on this phone. • BLF-speed-dial index—Unique identifier to identify this entry during configuration. Range is 1 to 75. • <i>phone number</i> —Telephone number or extension to be dialed.

	Command or Action	Purpose
Step 5	end Example: Router(config-ephone)# end	Returns to privileged EXEC mode.

Configure Presence to Watch External Lines

To enable internal watchers to monitor external directory numbers on a remote Cisco Unified CME router, perform the following steps.

Before you begin

Presence service must be enabled for internal lines. See [Enable Presence for Internal Lines](#).

SUMMARY STEPS

1. **enable**
2. **configure terminal**
3. **presence**
4. **server *ip-address***
5. **allow subscribe**
6. **watcher all**
7. **sccp blf-speed-dial retry-interval *seconds* limit *number***
8. **exit**
9. **voice register global**
10. **authenticate presence**
11. **authenticate credential *tag location***
12. **end**

DETAILED STEPS

	Command or Action	Purpose
Step 1	enable Example: Router> enable	Enables privileged EXEC mode. <ul style="list-style-type: none"> • Enter your password if prompted.
Step 2	configure terminal Example: Router# configure terminal	Enters global configuration mode.
Step 3	presence Example: Router(config)# presence	Enables presence service and enters presence configuration mode.

	Command or Action	Purpose
Step 4	server ip-address Example: Router(config-presence)# server 10.10.10.1	Specifies the IP address of a presence server for sending presence requests from internal watchers to external presentities.
Step 5	allow subscribe Example: Router(config-presence)# allow subscribe	Allows internal watchers to monitor external directory numbers.
Step 6	watcher all Example: Router(config-presence)# watcher all	Allows external watchers to monitor internal directory numbers.
Step 7	sccp blf-speed-dial retry-interval seconds limit number Example: Router(config-presence)# sccp blf-speed-dial retry-interval 90 limit number 15	(Optional) Sets the retry timeout for BLF monitoring of speed-dial numbers on phones running SCCP. <ul style="list-style-type: none"> • <i>seconds</i>—Retry timeout in seconds. Range: 60 to 3600. Default: 60. • <i>number</i>—Maximum number of retries. Range: 10 to 100. Default: 10.
Step 8	exit Example: Router(config-presence)# exit	Exits presence configuration mode.
Step 9	voice register global Example: Router(config)# voice register global	Enters voice register global configuration mode to set global parameters for all supported SIP phones in a Cisco Unified CME environment.
Step 10	authenticate presence Example: Router(config-register-global)# authenticate presence	(Optional) Enables authentication of incoming presence requests from a remote presence server.
Step 11	authenticate credential tag location Example: Router(config-register-global)# authenticate credential 1 flash:cred1.csv	(Optional) Specifies the credential file to use for authenticating presence subscription requests. <ul style="list-style-type: none"> • <i>tag</i>—Number that identifies the credential file to use for presence authentication. Range: 1 to 5. • <i>location</i>—Name and location of the credential file in URL format. Valid storage locations are TFTP, HTTP, and flash memory.
Step 12	end Example: Router(config-register-global)# end	Exits to privileged EXEC mode.

Verify Presence Configuration

Step 1 **show running-config**

Use this command to verify your configuration.

```
Router# show running-config
!
voice register global
 mode cme
 source-address 10.1.1.2 port 5060
 load 7971 SIP70.8-0-1-11S
 load 7970 SIP70.8-0-1-11S
 load 7961GE SIP41.8-0-1-0DEV
 load 7961 SIP41.8-0-1-0DEV
 authenticate presence
 authenticate credential 1 tftp://172.18.207.15/labtest/cred1.csv
 create profile sync 0004550081249644
.
.
.
presence
 server 10.1.1.4
 sccp blf-speed-dial retry-interval 70 limit 20
 presence call-list
 max-subscription 128
 watcher all
 allow subscribe
!
sip-ua
 presence enable
```

Step 2 **show presence global**

Use this command to display presence configuration settings.

```
Router# show presence global

Presence Global Configuration Information:
=====
Presence feature enable           : TRUE
Presence allow external watchers  : FALSE
Presence max subscription allowed : 100
Presence number of subscriptions  : 0
Presence allow external subscribe : FALSE
Presence call list enable         : TRUE
Presence server IP address        : 0.0.0.0
Presence sccp blfsd retry interval : 60
Presence sccp blfsd retry limit   : 10
Presence router mode              : CME mode
```

Step 3 **show presence subscription [details | presentity telephone-number | subid subscription-id summary]**

Use this command to display information about active presence subscriptions.

```
Router# show presence subscription summary

Presence Active Subscription Records Summary: 15 subscription
Watcher           Presentity           SubID Expires SibID  Status
```

```

=====
6002@10.4.171.60      6005@10.4.171.34      1 3600  0      idle
6005@10.4.171.81      6002@10.4.171.34      6 3600  0      idle
6005@10.4.171.81      6003@10.4.171.34      8 3600  0      idle
6005@10.4.171.81      6002@10.4.171.34      9 3600  0      idle
6005@10.4.171.81      6003@10.4.171.34     10 3600  0      idle
6005@10.4.171.81      6001@10.4.171.34     12 3600  0      idle
6001@10.4.171.61      6003@10.4.171.34     15 3600  0      idle
6001@10.4.171.61      6002@10.4.171.34     17 3600  0      idle
6003@10.4.171.59      6003@10.4.171.34     19 3600  0      idle
6003@10.4.171.59      6002@10.4.171.34     21 3600  0      idle
6003@10.4.171.59      5001@10.4.171.34     23 3600  24     idle
6002@10.4.171.60      6003@10.4.171.34    121 3600  0      idle
6002@10.4.171.60      5002@10.4.171.34    128 3600 129     idle
6005@10.4.171.81      1001@10.4.171.34    130 3600 131     busy
6005@10.4.171.81      7005@10.4.171.34    132 3600 133     idle
=====

```

Troubleshooting Presence Service

You can use the following commands to troubleshoot presence service:

- `debug presence {all | asnl | errors | event | info | timer | trace | xml}`
- `debug ephone blf [mac-address mac-address]`

Configuration Examples for Presence Service

Example for Configuring Presence in Cisco Unified CME

```

Router# show running-config

Building configuration...

Current configuration : 5465 bytes
!
version 12.4
service timestamps debug datetime msec
service timestamps log datetime msec
no service password-encryption
!
hostname CME-3825
!
boot-start-marker
boot-end-marker
!
logging buffered 2000000 debugging
enable password lab
!
no aaa new-model
!
resource policy
!
no network-clock-participate slot 1
no network-clock-participate slot 2

```

```
ip cef
!
!
no ip domain lookup
!
voice-card 1
no dspfarm
!
voice-card 2
no dspfarm
!
!
voice service voip
allow-connections sip to sip
h323
sip
registrar server expires max 240 min 60
!
voice register global
mode cme
source-address 11.1.1.2 port 5060
load 7971 SIP70.8-0-1-11S
load 7970 SIP70.8-0-1-11S
load 7961GE SIP41.8-0-1-0DEV
load 7961 SIP41.8-0-1-0DEV
authenticate presence
authenticate credential 1 tftp://172.18.207.15/labtest/cred1.csv
create profile sync 0004550081249644
!
voice register dn 1
number 2101
allow watch
!
voice register dn 2
number 2102
allow watch
!
voice register pool 1
id mac 0015.6247.EF90
type 7971
number 1 dn 1
blf-speed-dial 1 1001 label "1001"
!
voice register pool 2
id mac 0012.0007.8D82
type 7912
number 1 dn 2
!
interface GigabitEthernet0/0
description $ETH-LAN$$ETH-SW-LAUNCH$$INTF-INFO-GE 0/0$
ip address 11.1.1.2 255.255.255.0
duplex full
speed 100
media-type rj45
no negotiation auto
!
interface GigabitEthernet0/1
no ip address
shutdown
duplex auto
speed auto
media-type rj45
negotiation auto
!
```

```

ip route 0.0.0.0 0.0.0.0 11.1.1.1
!
ip http server
!
!
!
tftp-server flash:Jar41sccp.8-0-0-103dev.sbn
tftp-server flash:cvm41sccp.8-0-0-102dev.sbn
tftp-server flash:SCCP41.8-0-1-0DEV.loads
tftp-server flash:P00303010102.bin
tftp-server flash:P00308000100.bin
tftp-server flash:P00308000100.loads
tftp-server flash:P00308000100.sb2
tftp-server flash:P00308000100.sbn
tftp-server flash:SIP41.8-0-1-0DEV.loads
tftp-server flash:apps41.1-1-0-82dev.sbn
tftp-server flash:cnu41.3-0-1-82dev.sbn
tftp-server flash:cvm41sip.8-0-0-103dev.sbn
tftp-server flash:dsp41.1-1-0-82dev.sbn
tftp-server flash:jar41sip.8-0-0-103dev.sbn
tftp-server flash:P003-08-1-00.bin
tftp-server flash:P003-08-1-00.sbn
tftp-server flash:P0S3-08-1-00.loads
tftp-server flash:P0S3-08-1-00.sb2
tftp-server flash:CP7912080000SIP060111A.sbin
tftp-server flash:CP7912080001SCCP051117A.sbin
tftp-server flash:SCCP70.8-0-1-11S.loads
tftp-server flash:cvm70sccp.8-0-1-13.sbn
tftp-server flash:jar70sccp.8-0-1-13.sbn
tftp-server flash:SIP70.8-0-1-11S.loads
tftp-server flash:apps70.1-1-1-11.sbn
tftp-server flash:cnu70.3-1-1-11.sbn
tftp-server flash:cvm70sip.8-0-1-13.sbn
tftp-server flash:dsp70.1-1-1-11.sbn
tftp-server flash:jar70sip.8-0-1-13.sbn
!
control-plane
!
dial-peer voice 2001 voip
preference 2
destination-pattern 1...
session protocol sipv2
session target ipv4:11.1.1.4
dtmf-relay sip-notify
!
presence
server 11.1.1.4
sccp blf-speed-dial retry-interval 70 limit 20
presence call-list
max-subscription 128
watcher all
allow subscribe
!
sip-ua
authentication username jack password 021201481F
presence enable
!
!
telephony-service
load 7960-7940 P00308000100
load 7941GE SCCP41.8-0-1-0DEV
load 7941 SCCP41.8-0-1-0DEV
load 7961GE SCCP41.8-0-1-0DEV
load 7961 SCCP41.8-0-1-0DEV

```

```
load 7971 SCCP70.8-0-1-11S
load 7970 SCCP70.8-0-1-11S
load 7912 CF7912080000SIP060111A.sbin
max-ephones 100
max-dn 300
ip source-address 11.1.1.2 port 2000
url directories http://11.1.1.2/localdirectory
max-conferences 6 gain -6
call-forward pattern .T
transfer-system full-consult
transfer-pattern .T
create cnf-files version-stamp Jan 01 2002 00:00:00
!
!
ephone-dn 1 dual-line
number 2001
allow watch
!
!
ephone-dn 2 dual-line
number 2009
allow watch
application default
!
!
ephone-dn 3
number 2005
allow watch
!
!
ephone-dn 4 dual-line
number 2002
!
!
ephone 1
mac-address 0012.7F57.62A5
fastdial 1 1002
blf-speed-dial 1 2101 label "2101"
blf-speed-dial 2 1003 label "1003"
blf-speed-dial 3 2002 label "2002"
type 7960
button 1:1 2:2
!
!
!
ephone 3
mac-address 0015.6247.EF91
blf-speed-dial 2 1003 label "1003"
type 7971
button 1:3 2:4
!
!
!
line con 0
exec-timeout 0 0
password lab
stopbits 1
line aux 0
stopbits 1
line vty 0 4
password lab
login
!
scheduler allocate 20000 1000
```

```
!
end
```

Feature Information for Presence Service

The following table provides release information about the feature or features described in this module. This table lists only the software release that introduced support for a given feature in a given software release train. Unless noted otherwise, subsequent releases of that software release train also support that feature.

Use Cisco Feature Navigator to find information about platform support and Cisco software image support. To access Cisco Feature Navigator, go to www.cisco.com/go/cfn. An account on Cisco.com is not required.

Table 2: Feature Information for Presence Service

Feature Name	Cisco Unified CME Version	Modification
Phone User Interface for BLF-Speed-Dial	8.5	Added support for BLF Speed Dial through Phone User Interface.
BLF Monitoring	7.1	<ul style="list-style-type: none"> • Added support for device-based BLF monitoring. • Added support for BLF Monitoring of ephone-DNs with DnD, Call Park, Paging, and Conferencing
Presence Service	4.1	Presence with BLF was introduced.