



Getting Started

- [Activate IoT Service \(Wireless\)](#), on page 1

Activate IoT Service (Wireless)

This task shows you how to activate IoT service (wireless) on some or all your devices, from the Cisco Spaces dashboard.

Before you begin

To activate IoT service (wireless), your network must meet the below prerequisites :

- Cisco Spaces: Connector
- Cisco Catalyst 9800 Series Wireless Controllers, installed with version 17.3.1 or higher
- Supported access points. See [Prerequisites of IoT Service \(Wireless\)](#)



Note

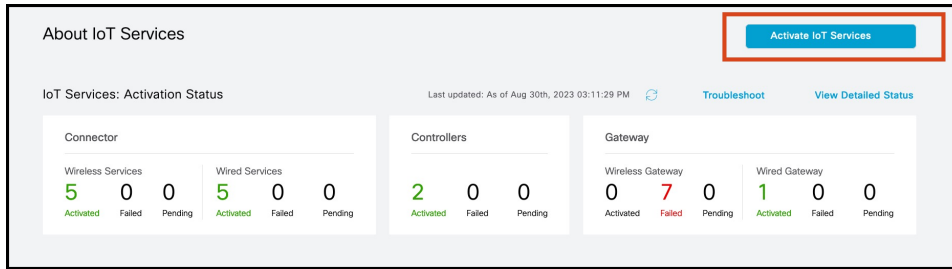
- This workflow is applicable only for Connector Release 3. We recommend that you upgrade from Connector 2.x for smooth functioning of your services. If it is absolutely essential to enable IoT service (wireless) on Connector 2.x, open a support case.
- The workflow initiated by this procedure automatically checks for prerequisites necessary to complete this task.

Step 1 Log in to Cisco Spaces.

Step 2 From the left navigation pane, click **IoT Services > About IoT Services**.

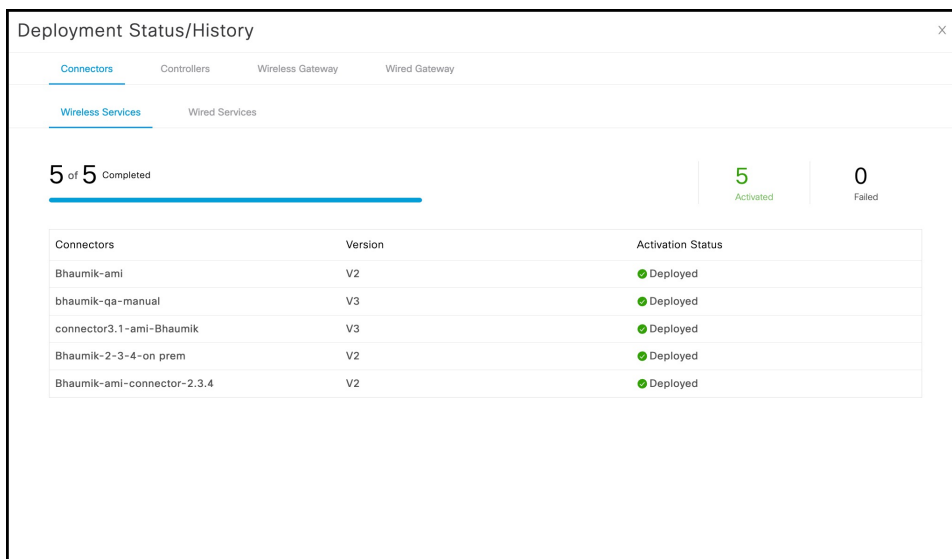
You can see the number of connectors activated with the IoT service (wireless) service. You can also see the number of APs deployed as an IoT service (wireless) gateway.

Figure 1: About IoT Services



Click **View Detailed Status** to see the breakdown of the activation status of various individual devices.

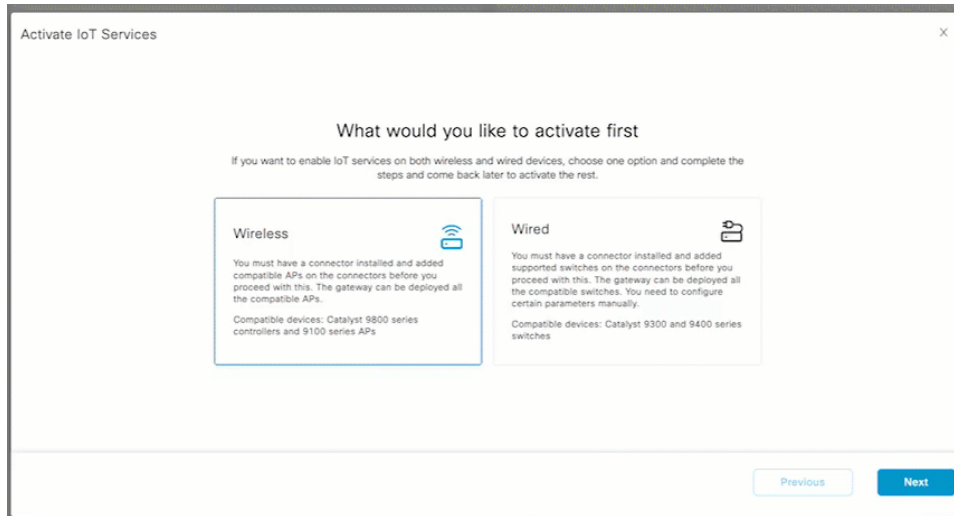
Figure 2: Detailed Status of Devices Activated With IoT Service (Wireless)



Step 3 In the **About IoT Services** window top-right corner, click **Activate IoT Services**.

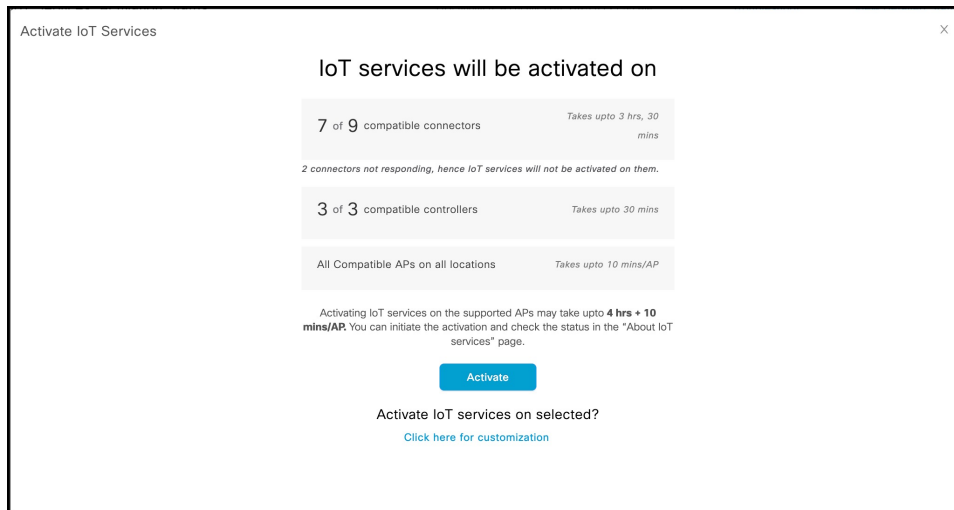
Step 4 In the **Activate IoT Services** window that is displayed, choose **Wireless**.

Figure 3: Activate IoT Service (Wireless)



You can see the list of all devices on which IoT service (wireless) can be activated, along with the activation time.

Figure 4: List of Supported Devices

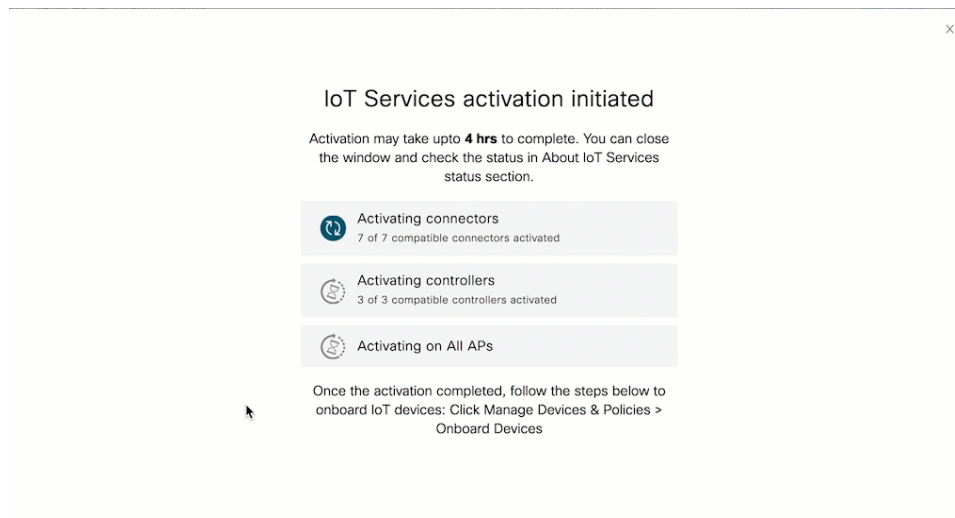


Step 5 To activate IoT service (wireless) on all devices on your network, in the **IoT services will be activated on** window, click **Activate**.

This activation of IoT service (wireless) automates the following tasks:

- Enables IoT streams on the connector
- Enables the wireless controller stream
- Configures APs as a Bluetooth Low Energy (BLE) gateway (this includes turning on the BLE radio, BLE scanning, and deploying the BLE gateway app)

Figure 5: Activate IoT Service (Wireless) on all devices



Step 6

To activate IoT service (wireless) only on specific devices of your network, do the following:

- Choose one or more connectors to activate IoT service (wireless).
- To activate the wireless gateway, click **Activate Wireless**.
- In the **Deploy Wireless Gateway** window, select the APs on which you want to activate IoT service (wireless).

Figure 6: Activate IoT Service (Wireless) on Preferred Devices

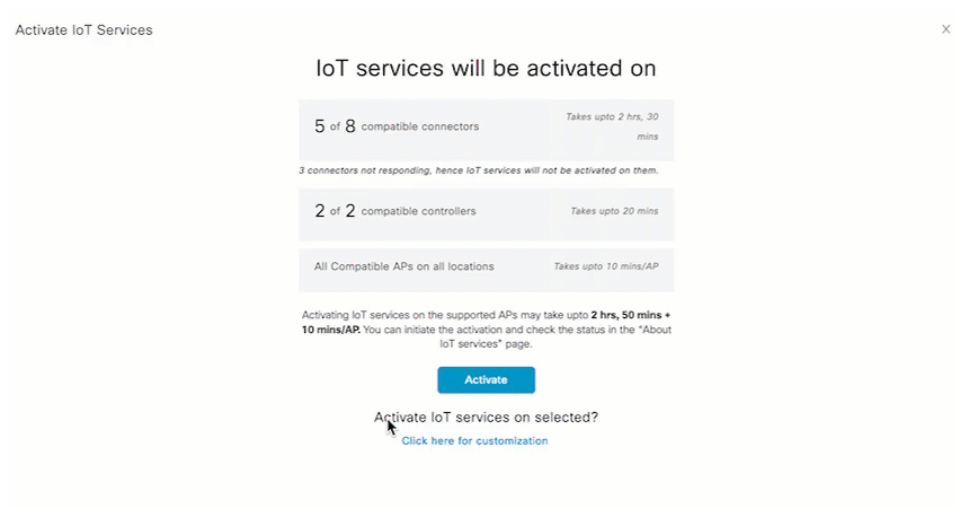
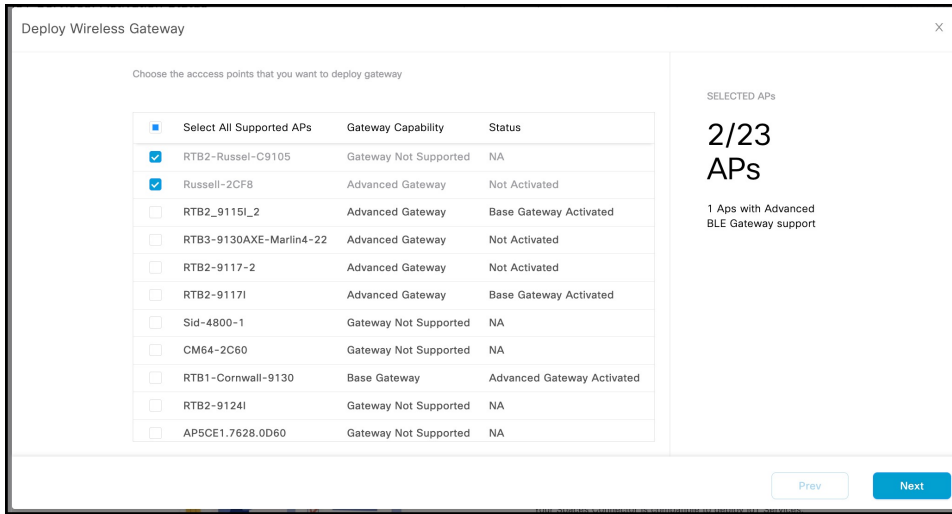


Figure 7: Activate IoT Service (Wireless) on Preferred Devices

What to do next

Once the activation completed, you can onboard the IoT Service (Wireless) devices. Click **Manage Devices & Policies > Onboard Devices**.

