



Managing Software and Configuration Files

This chapter describes how to manage software images and modules.



Note

For more information about managing software image and configuration files using the command-line interface (CLI), refer to the *Cisco 9000 Family Configuration Guide* or the *Cisco 9000 Family Command Reference*.

This chapter includes the following sections:

- [Overview, page 6-1](#)
- [Downloading Software Images, page 6-2](#)
- [Copying Configuration Files, page 6-3](#)
- [Saving Configurations, page 6-5](#)

Overview

Each switch in the Cisco MDS 9000 Family is shipped with a Cisco Multilayer intelligent SAN operating system called SAN-OS and two images:

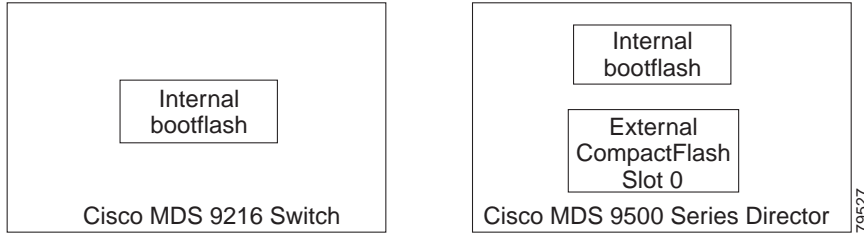
- The kickstart image—Loads the kernel and basic drivers
- The system image—Loads the system image

To upgrade to a different software version, you need to download the new image software to your local switch. To start running the new image files, use the CLI to change the relevant configuration variables to point to the new images and restart the switch. For information about the specific procedures and commands, refer to the *Cisco 9000 Family Configuration Guide*.

All Cisco MDS 9000 Family switches contain internal bootflash memory that resides in the supervisor module. Cisco MDS 9500 Series directors contain an additional external CompactFlash called slot0: (see [Figure 6-1](#)).

Send documentation comments to

Figure 6-1 Flash Devices in the Cisco MDS 9000 Family

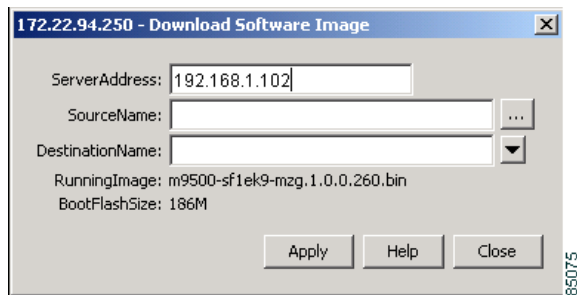


Upgrading a software image does not disrupt use of the startup configuration file, which you can still use after the upgrade. When you restart the switch, the startup configuration is converted so that it is useable by the new image.

Downloading Software Images

To download software images using the Fabric Manager, choose **Admin > Download Software Image** from the menu tree. To download software images using the Device Manager, choose **Download Software Image** from the Admin menu. [Figure 6-2](#) shows the dialog box from the Device Manager.

Figure 6-2 Admin > Download Software Images Dialog Box, Device Manager



The Fabric Manager dialog box shows the display-only information described in [Table 6-1](#).

Table 6-1 Admin > Download Software Images—Display-Only Attributes

Display-Only Information	Description
Switch	Displays the switch ID. This attribute is only displayed from the Fabric Manager.
Status	Displays the status of the software image download.
Fail Reason	Displays the reason if the download operation failed.

The Device Manager dialog box shows the display-only information described in [Table 6-2](#).

Send documentation comments to

Table 6-2 *Admin > Download Software Images—Display-Only Attributes*

Display-Only Information	Description
RunningImage	The file name of the software image currently running on the switch.
BootFlashSize	The size, in Megabytes, of the boot flash on the switch.

Table 6-3 describes the configurable attributes for downloading software images.

Table 6-3 *Admin > Download Software Images—Configurable Attributes*

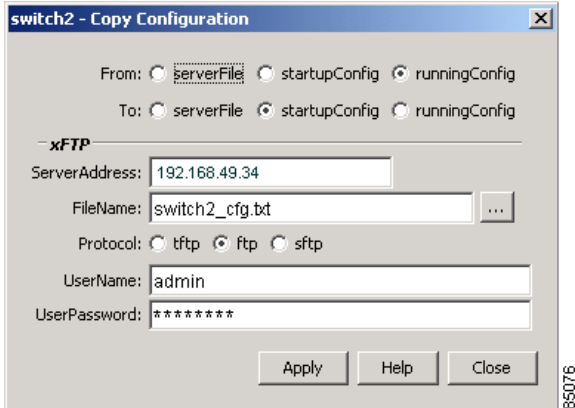
Display-Only Information	Description
Select	In Fabric Manager, enable this check box to download a software image to a specific switch.
ServerAddress/From TFTP Server:Address	Enter the IP address of the TFTP server from which you are downloading the software image.
SourceName/From TFTP Server:Filename	Specifies the file name of the software image. In Device Manager, click the ...button to the right of the field to select a source file.
DestinationName	Specifies the name of the destination file. In Device Manager, click the arrow button to the right of the field to select either: <ul style="list-style-type: none"> • bootflash:/—Copies the image to boot flash. • slot0:/—Copies the image to slot 0.

Copying Configuration Files

To copy configurations from the Fabric Manager, choose **Admin > Copy Configuration** from the menu tree. To copy configurations from the Device Manager, choose **Copy Configuration** from the Admin menu. Figure 6-3 shows the dialog box from the Device Manager.

Send documentation comments to

Figure 6-3 Admin > Copy Configuration Dialog Box, Device Manager



The Fabric Manager dialog box shows the display-only information described in [Table 6-4](#).

Table 6-4 Admin > Download Software Images—Display-Only Attributes

Display-Only Information	Description
Switch	Displays the switch ID. This attribute is only displayed from the Fabric Manager.
Status	Displays the status of the copy action.
FailureCause	Displays the reason if the copy action fails.

[Table 6-5](#) describes the configurable attributes for copying configurations.

Table 6-5 Admin > Copy Configuration—Configurable Attributes

Configurable Attribute	Description
From	<p>Specifies the file type of the source file. Valid values are <code>runningConfig</code> or <code>startupConfig</code>. The source file's type must be different from the destination file's type.</p> <p>If the source file is a network file, the server address and source file name must be created. These three attributes (source file type, server address, and source file name) uniquely identify the source file.</p> <p>If the source file is an IOS file, the source file name must be created. The source file type and source file name uniquely identify the source file.</p>
To	<p>Specifies the file type of the destination file. Valid values are <code>runningConfig</code> or <code>startupConfig</code>. The destination file's type must be different from the source file's type.</p> <p>If the destination file is a network file, the server address and destination file name must be created. These three attributes (destination file type, server address, and destination file name) uniquely identify the destination file.</p> <p>If the destination file is an IOS file, the destination file name must be created. The destination file type and destination file name uniquely identify the destination file.</p>

*Send documentation comments to***Table 6-5 Admin > Copy Configuration—Configurable Attributes (continued)**

Configurable Attribute	Description
Address	Specifies the IP address of the TFTP server from/to which the configuration file is to be copied. If either the source file type or the destination file type is a network file, the server address is required.
FileName	Specifies the file name (including the path, if applicable) of the source or destination file. If either the source file type or the destination file type is an IOS file, the file name is required.
Protocol	Specifies the protocol to be used for the copy operation. If a protocol is not specified, the default is TFTP. If the copy operation occurs locally on the SNMP agent, the protocol is ignored.
UserName	Specifies the remote user name for copy operations through FTP, RCP, SFTP, or SCP protocols. The remote user name is required for any of these protocols. If the protocol is RCP, it overrides the remote user name configured through the rcmd remote-username configuration command. The remote user name is sent as the server user name in an RCP command request sent by the system to a remote RCP server.
UserPassword	Specifies the password used by FTP, SFTP, or SCP protocols for copying a file to/from an FTP/SFTP/SCP server. This password is required for the FTP or SCP protocols.

Saving Configurations

To save configurations from the Device Manager, choose **Save Configuration** from the Admin menu. You are prompted whether you wish to copy the running configuration to the startup configuration. Click **Yes** to save the configuration.

Send documentation comments to