



CHAPTER 11

On-Demand Port Activation Licensing

This chapter describes how to use the on-demand port activation licensing feature on the Cisco MDS 9124 Fabric Switch, the Cisco MDS 9134 Fabric Switch, the Cisco Fabric Switch for HP c-Class BladeSystem, and the Cisco Fabric Switch for IBM BladeCenter. This chapter contains the following sections:

- [About On-Demand Port Activation Licensing, page 11-1](#)
- [Configuring Port Activation Licenses, page 11-4](#)

About On-Demand Port Activation Licensing

As of Cisco MDS SAN-OS Release 3.1(1), you can expand your SAN connectivity as needed by enabling users to purchase and install additional port licenses. By default, all ports are eligible for license activation. On the Cisco MDS 9124 Fabric Switch, licenses are allocated sequentially. However, you can move or reassign licenses to any eligible port on the switch.

On the Cisco MDS 9134 Fabric Switch, the first 32 ports operate at 1 Gbps, 2 Gbps, or 4 Gbps. The switch has two ports that operate at 10 Gbps. Licenses are allocated sequentially.

On the Cisco Fabric Switch for HP c-Class BladeSystem and the Cisco Fabric Switch for IBM BladeCenter, licenses for internal ports are allocated as the ports come up. Licenses for external ports are allocated sequentially.

Send documentation comments to mdsfeedback-doc@cisco.com

Port-Naming Conventions

Table 11-1 describes the port-naming conventions for the four Cisco Fabric switches.

Table 11-1 Port-Naming Conventions for Cisco Fabric Switches

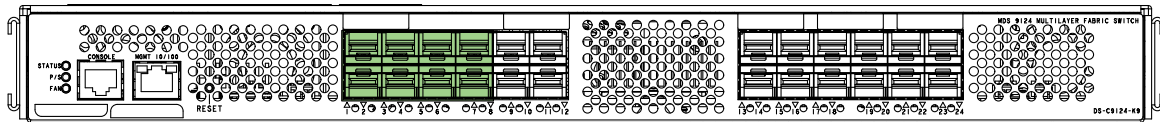
Cisco MDS 9124 Switch	Cisco MDS 9134 Switch	Cisco Fabric Switch for HP c-Class BladeSystem	Cisco Fabric Switch for IBM BladeCenter
fc1/1 through fc1/24	fc1/1 through fc1/34	Internal ports: bay1 through bay16	Internal ports: bay1 through bay14
		External ports: ext1 through ext8	External ports: ext0 and ext15 through ext19

Port Licensing

On the Cisco MDS 9124 Switch, the first eight ports are licensed by default. You are not required to perform any tasks beyond the default configuration unless you prefer to immediately activate additional ports, make ports ineligible, or move port licenses.

Figure 11-1 shows the ports that are licensed by default for the Cisco MDS 9124 Switch.

Figure 11-1 Cisco MDS 9124 Switch Default Port Licenses (fc1/1 - fc1/8)



If you need additional connectivity, you can activate additional ports in 8-port increments with each on-demand port activation license, up to a total of 24 ports.

On the Cisco MDS 9134 Switch, the first 24 ports that can operate at 1 Gbps, 2 Gbps, or 4 Gbps are licensed by default. If you need additional connectivity, you can activate the remaining eight ports with one on-demand port activation license. A separate 10G license file is required to activate the remaining two 10-Gbps ports.

Figure 11-2 shows the ports that are licensed by default for the Cisco MDS 9134 Switch.

Figure 11-2 Cisco MDS 9134 Switch Default Port Licenses (fc1/1 - fc1/24)

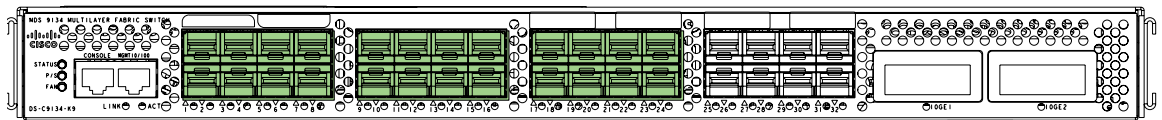
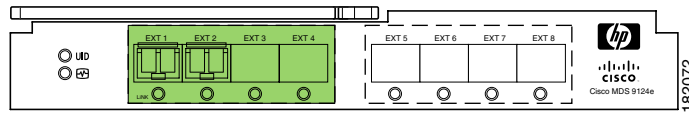


Figure 11-3 shows the external ports that are licensed by default for the Cisco Fabric Switch for HP c-Class BladeSystem.

Send documentation comments to mdsfeedback-doc@cisco.com

Figure 11-3 Cisco Fabric Switch for HP c-Class BladeSystem Default Port Licenses (ext1 - ext4)

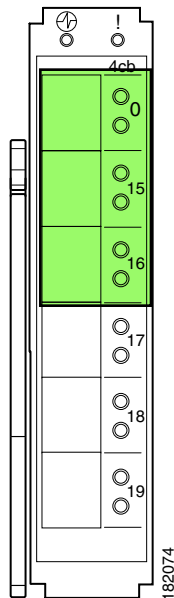


On the Cisco Fabric Switch for HP c-Class BladeSystem, any eight internal ports and the external ports (ext1 through ext4) are licensed by default. A single on-demand port activation license is required to use the remaining eight internal and four external ports.

On the Cisco Fabric Switch for IBM BladeCenter, any seven internal ports and the external ports (ext0, ext15 and ext16) are licensed by default. A single on-demand port activation license is required to use the remaining seven internal and three external ports.

Figure 11-4 shows the external ports that are licensed by default for the Cisco Fabric Switch for IBM BladeCenter.

Figure 11-4 Cisco Fabric Switch for IBM BladeCenter Default Port Licenses (ext0, ext15 - ext16)



If you do not prefer to accept the default behavior and would rather assign a license to a specific port, make the port ineligible to receive a license, or move licenses among ports, refer to the “[Configuring Port Activation Licenses](#)” section on page 11-4.

License Status Definitions

Table 11-2 defines the port activation license status terms.

Send documentation comments to mdsfeedback-doc@cisco.com

Table 11-2 Port Activation License Status Definitions

Port Activation License Status	Definition
acquired	The port is licensed and active.
eligible	The port is eligible to receive a license but does not yet have one. See Chapter 10, “Obtaining and Installing Licenses,” for information about how to obtain and install the PORT_ACTIVATION_PKG and license key file.
ineligible	The port is not allowed to receive a license.

By default, when you install additional port license activation packages, the activation status of ports changes from “eligible” to “acquired.” If you prefer to accept the default behavior, no further action is required.



Note

You can uninstall licenses for ports not in use; however, you cannot uninstall default licenses.

Configuring Port Activation Licenses

This section contains the following topics:

- [Checking the Status of Licenses, page 11-4](#)
- [Making a Port Eligible for a License, page 11-5](#)
- [Acquiring a License for a Port, page 11-6](#)

Checking the Status of Licenses



Note

The dialog boxes shown in Figures 11-5 and 11-6 apply only to the Cisco MDS 9124 Fabric Switch.

To check the number of licenses that are in use using Device Manager, follow these steps:

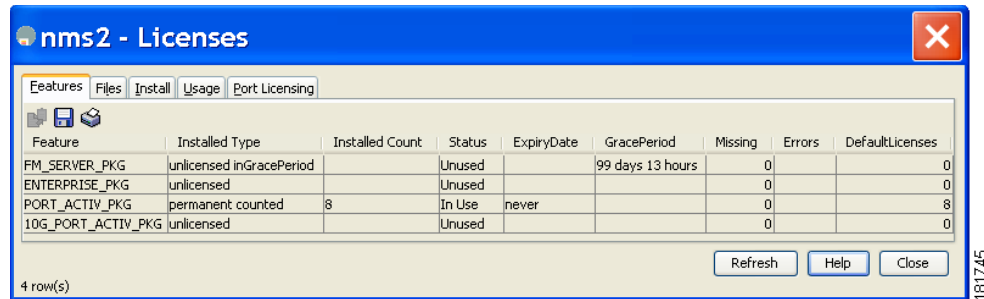
Step 1

Choose **Admin > Licenses**.

You see the Licenses dialog box as shown in [Figure 11-5](#).

Send documentation comments to mdsfeedback-doc@cisco.com

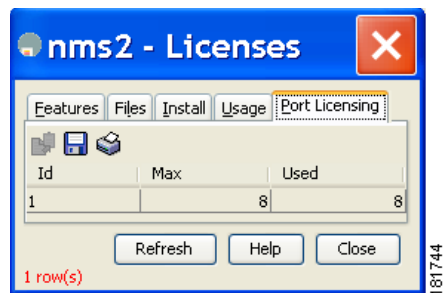
Figure 11-5 Licenses Dialog Box



Step 2 Click the **Port Licensing** tab.

You see the licenses that are in use as shown in Figure 11-6.

Figure 11-6 Licenses in Use



Step 3 Click **Close** to close the dialog box.

Making a Port Eligible for a License

By default, all ports are eligible to receive a license. However, if a port has already been made ineligible and you prefer to activate it, then you must make that port eligible .



Note

The dialog box shown in Figure 11-7 applies only to the Cisco MDS 9124 Fabric Switch.

To make multiple ports eligible to acquire a license using Device Manager, follow these steps:

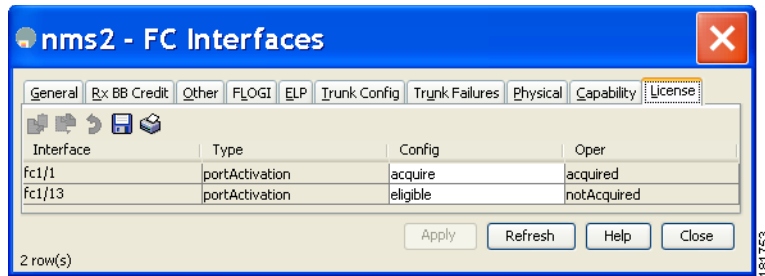
Step 1 Choose **Interface > FC All** and click the **License** tab or hold down the **Control** key, and then click each port that you want to make eligible.

Step 2 Right-click the selected ports, select **Configure**, and click the **License** tab.

You see the FC Interfaces dialog box as shown in Figure 11-7.

Send documentation comments to mdsfeedback-doc@cisco.com

Figure 11-7 FC Interfaces Dialog Box



Step 3 Select **eligible** from the Config drop-down list for each port that you want to make eligible.

Step 4 Click **Apply** to save the changes.



Note

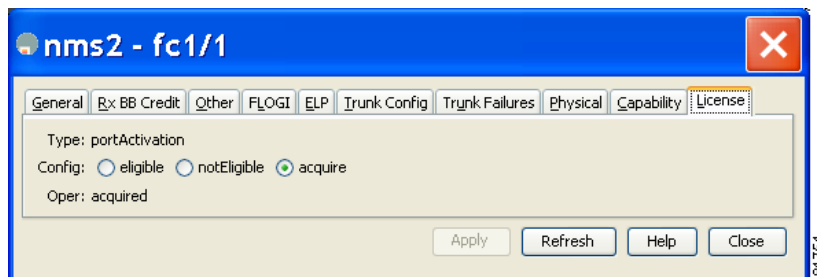
The dialog box shown in Figure 11-8 applies only to the Cisco MDS 9124 Fabric Switch.

To make a single port eligible to acquire a license using Device Manager, follow these steps:

Step 1 Right-click a port, select **Configure**, and click the **License** tab.

You see the port licensing options for the selected port as shown in Figure 11-8.

Figure 11-8 License Tab for Selected Port



Step 2 Click the **eligible** radio button to make the port eligible.

Step 3 Click **Apply** to save the changes.

Acquiring a License for a Port

If you do not prefer to accept the default on-demand port license assignments, you will need to first acquire licenses for ports to which you want to move the license.

To acquire licenses for multiple ports using Device Manager, follow these steps:

Step 1 Choose **Interface > FC All** and click the **License** tab or hold down the **Control** key, and then click each port for which you want to acquire a license.

Send documentation comments to mdsfeedback-doc@cisco.com

- Step 2** Right-click the selected ports, select **Configure**, and click the **License** tab.
You see the FC Interfaces dialog box as shown in [Figure 11-7](#).
- Step 3** Select **acquire** from the Config drop-down list for each port that you want to acquire a license.
- Step 4** Click **Apply** to save the changes.
-

To acquire a license for a single port using Device Manager, follow these steps:

- Step 1** Right-click a port, select **Configure**, and click the **License** tab.
You see the port licensing options for the selected port as shown in [Figure 11-8](#).
- Step 2** Click the **acquire** radio button to acquire a license for the port.
- Step 3** Click **Apply** to save the changes.
-

Send documentation comments to mdsfeedback-doc@cisco.com